

Automated detection of atmospheric NO₂ plumes from satellite data: a tool to help infer anthropogenic combustion emissions

Douglas P. Finch^{1,2}, Paul I. Palmer^{1,2}, and Tiaran Zhang³

¹National Centre for Earth Observation, University of Edinburgh, UK

²School of GeoSciences, University of Edinburgh, UK

³National Centre for Earth Observation, Kings College London, UK, now at Satellite Vu, UK

Correspondence: Douglas Finch (d.finch@ed.ac.uk)

Abstract. We use a convolutional neural network (CNN) to identify plumes of nitrogen dioxide (NO₂), a tracer of **incomplete** combustion, from NO₂ column data collected by the Tropospheric Monitoring Instrument (TROPOMI). This approach allows us to exploit efficiently the growing volume of satellite data available to characterise Earth's climate. For the purposes of demonstration, we focus on data collected between July 2018 and June 2020. We train the deep learning model using six thousand 28×28-pixel images of TROPOMI data (corresponding to $\simeq 266 \times 133$ km²) and find that the model can identify plumes with a success rate of more than 90%. Over our study period, we find over 310,000 individual NO₂ plumes of which $\simeq 919\%$ are found over mainland China. We have attempted to remove the influence of open biomass burning using correlative high-resolution thermal infrared data from the Visible Infrared Imaging Radiometer Suite (VIIRS). We relate the remaining NO₂ plumes to large urban centres, oil and gas production, and major power plants. We find no correlation between NO₂ plumes and the location of natural gas flaring. We also find persistent NO₂ plumes from regions where inventories do not currently include emissions. Using an established anthropogenic CO₂ emission inventory, we find that our NO₂ plume distribution captures 92% of total CO₂ emissions, with the remaining 8% mostly due to a large number of small sources < 0.2 gC/m²/day for which our NO₂ plume model is less sensitive. We argue the underlying CNN approach could form the basis of a Bayesian framework to estimate anthropogenic combustion emissions.

15 1 Introduction

The Paris Agreement (PA) is the current inter-government vehicle that describes a progressive reduction in greenhouse gas (GHG) emissions to mitigate dangerous climate change, described as a larger than two-degree Celsius increase in global mean temperature above pre-industrial values. Whether it will achieve its stated goals depends on commitments of its signatories to establish and more importantly realise stringent plans to reduce effectively national GHG emissions. The PA includes two main activities: quinquennial Global Stocktakes (GST) and Nationally Determined Contributions (NDC) that describe pledged emission reductions during successive GSTs. Given the implications of non-compliance and the need to make large and rapid emission reductions, measurement, reporting and verification (MRV) systems are being developed that will help guide nations on the effectiveness of policies (Janssens-Maenhout et al., 2020). The main focus on these MRV systems are anthropogenic emissions of carbon dioxide (CO₂) and methane. One of the challenges faced by all these MRV systems is

25 separating the anthropogenic and natural components of CO₂ and methane fluxes. Here, we use a deep learning model to identify automatically satellite-observed plumes of nitrogen dioxide (NO₂), a proxy for ~~incomplete~~-combustion, to locate combustion hotspots, e.g. oil and gas industry, cities, and powerplants.

Burning of fossil fuels, representing emissions of 9-10 PgC/yr (Friedlingstein et al., 2020), has been shown unequivocally to impact Earth's climate via rising atmospheric levels of gases such as CO₂ and methane that can absorb and radiate infra-
30 red radiation. The distribution of these emissions is heterogeneous across the globe, disproportionately focused on cities, oil and gas extraction facilities, energy generation facilities, and flows of physical trade that rely heavily on shipping and road transportation (Poore and Nemecek, 2018). Compiled inventories, which rely on self-reporting, provide estimates on these emissions but rely on assumptions that can sometimes lead to inaccurate values. Cities are responsible for almost three quarters of the fossil fuel contribution to atmospheric CO₂ (Edenhofer et al., 2014), but questions remain about the veracity
35 of reported emissions (e.g., Gurney et al. (2021)) and the disproportionate role of a small number of super-emitters (e.g., Duren et al. (2019)). We know where most power plants are geographically located but new and large coal-fired power plants continue to be built and commissioned in countries such as China and India, potentially compromising their short-term climate ambitions within the PA. The rate of their construction often outpaces updates to inventory estimates. International shipping only represents a few percent of global CO₂ emissions but they appear to be going up (Organization, 2020). The importance
40 of accurate emission estimates becomes even more prevalent at smaller geographical and temporal scales. Reported annual country level emissions of CO₂ tend to be reasonably accurate, but are typically not sufficiently detailed to support targeted policy development. Given the importance of establishing accurate national and sub-national emission baselines from which to reduce emissions as part of the PA, it is essential we have a robust measurement-based approach to estimate emissions of CO₂ and methane to complement inventory estimates.

45 A growing body of work has been using satellite observations to study point sources of CO₂ (Bovensmann et al., 2010; Kort et al., 2012; Hakkarainen et al., 2016; Nassar et al., 2017; Broquet et al., 2018; Brunner et al., 2019; Kuhlmann et al., 2019; Zheng et al., 2019; Wang et al., 2019; Kuhlmann et al., 2020; Strandgren et al., 2020; Wang et al., 2020; Wu et al., 2020; Yang et al., 2020; Ye et al., 2020; Zheng et al., 2020) and methane (Varon et al., 2019; de Gouw et al., 2020; Varon et al., 2021), taking advantage of global measurement coverage, subject to clear skies. Even with the 0.3% precision of CO₂
50 columns detected by the NASA Orbiting Carbon Observatory-2 instrument, dilution of point source emissions across a 3 km² grid box could potentially result in the directly overhead column being elevated but not elevate the measurements immediately downwind except under exceptional circumstances. Other studies have recognized this shortcoming and have taken advantage of trace gases that are co-emitted with CO₂ and methane during the combustion process. For many industrial combustion processes, air provides the source of molecular oxygen necessary for the fuel to burn. While molecular nitrogen (N₂) in the air
55 does not take part in the combustion reaction, the temperatures involved can thermally dissociate N₂ to facilitate the production of NO (and to a lesser extent NO₂). In the absence of widespread use of scrubbers that remove nitrogen oxides from combustion exhaust and with the subsequent influence of photochemistry that rapidly interconverts NO and NO₂, NO₂ is widely assumed to be a robust proxy for combustion CO₂ (Reuter et al., 2019; Liu et al., 2020; Hakkarainen et al., 2021; Ialongo et al., 2021). The main advantage of using NO₂ as a tracer of combustion is its atmospheric e-folding lifetime, which ranges from hours to a

60 day in the lower troposphere. Consequently, any major surface emissions will result in an observable plume close to the point of emission.

All of these studies represent case studies or a small number of case studies, reflecting the difficulty of locating CO₂ plumes and coincident measurements of NO₂. This piecemeal approach is inconsistent with the vast volume of data being produced by the current generation of satellite instruments, in particular the TROPospheric Monitoring Instrument (TROPOMI), and 65 limits our ability to quantify the changing influence of CO₂ hotspots on the global carbon cycle. Here, we address this issue by using a deep learning algorithm to detect automatically NO₂ plumes. This work builds on earlier remote sensing image detection studies that use machine learning, e.g. Lary et al. (2016); Maxwell et al. (2018). As we show, the number of plumes found in any one year is O(10⁵), allowing us to study more systematically how NO₂ can be used to study combustion emission of carbon. [Although the NO₂ plume detection algorithm does not quantify anthropogenic emissions of CO₂ or methane, it provides a method to refine the development of future MRV systems which can directly feed into policy decisions.](#) 70

In section 2 we discuss the TROPOMI NO₂ and thermal anomaly data that we use to identify anthropogenic plumes of NO₂. We also describe the deep learning method we use, including our approach to supervised learning, which underpins our ability to detect automatically NO₂ plumes. In section 3 we report the performance of our NO₂ plume detection method, and use the ensemble of plumes to assess how well it detects CO₂ emissions described by an established inventory. We conclude the paper 75 in section 4, including a discussion of next steps.

2 Data and Methods

We describe the TROPOMI retrieved data of NO₂ columns that we use to study combustion, and VIIRS biomass burning data we use to isolate the influence of fossil fuel combustion. We also describe the development of our deep learning model to detect NO₂ plumes.

80 2.1 Satellite Data

TROPOMI Column Observations of NO₂

We use level 2 retrieved tropospheric column NO₂ data retrieved from the TROPospheric Monitoring Instrument (TROPOMI), launched in 2017. We use two years of NO₂ column data from July 2018 to June 2020. These data are taken from the Sentinel-5P Pre-Operations Data Hub (<https://s5phub.copernicus.eu/dhus/>). For further information about these level 2 data products we 85 refer the reader to studies dedicated to NO₂ (Boersma et al., 2010; Van Geffen et al., 2015; Lorente et al., 2017; Zara et al., 2018).

TROPOMI is a UV-Vis-NIR-SWIR spectrometer aboard the Copernicus Sentinel-5 Precursor (S5-P) satellite, which is in a Sun-synchronous orbit with a local equatorial overpass time of 13:30. TROPOMI has a swath width of 2600 km divided into 450 across-track pixels for which during our study period have dimensions of 7 km×3.5 km (across×along track) for 90 NO₂. This sampling strategy results in near-daily global coverage (Veeffkind et al., 2012), subject to cloud-free scenes. In this

study, we only use pixels with a quality flag >0.75 , as recommended by the TROPOMI Level 2 Product User Manuals. Higher resolution data are available from August 2019, but for consistency we have used the original resolution throughout our study period.

VIIRS Thermal Anomaly Data

95 We use thermal anomaly data from the Visible Infrared Imaging Radiometer Suite (VIIRS) on board the Suomi National Polar-orbiting Partnership (NPP) satellite, launched in 2011 as a proxy to identify NO_2 plumes from biomass burning. We use the 375 meter Level-2 VNP14 product from <https://firms.modaps.eosdis.nasa.gov/download/>. VIIRS provides near twice-daily global coverage at a spatial resolution of 750 m. During the study period we found 16,056,612 vegetation fires spotted by VIIRS, after discarding low confidence data.

100 We attribute an NO_2 plume to biomass burning if it is within 15 km of a biomass burning scene identified by VIIRS. We chose that distance criterion because it corresponds to approximately two TROPOMI pixels and should account for any offset error in determining the plume centre. We find that a 5–10 km adjustment to this criterion does not significantly affect our results. Development of a more sophisticated method, taking account of other trace gas measurements, is outside the scope of this study.

105 For the purposes of this study, we discard biomass burning scenes to focus on anthropogenic combustion source but we acknowledge that the converse to this approach is also scientifically valid.

2.2 Deep Learning Model to Identify NO_2 Plumes

To automatically detect plumes of NO_2 from TROPOMI data, we used a convolutional neural network (CNN) based on a deep learning model that contains four convolutional and two fully connected (FC) layers.

110 CNNs first use a series of convolutional layers, each with multiple filters which extract features (e.g., lines, orientation, clustering) from small sections of the input image. Each layer has an increasing number of filters and finds higher levels of features (progressively incomprehensible to humans). Maximum pooling layers are added between convolutional layers to reduce the spatial size of the convolved feature, reducing the computational power required. This is achieved by passing a 2×2 pixel kernel over the image and extracting the maximum value, helping extract dominant features. After the convolution, the
115 data are passed to multiple FC layers that learn which features are important in categorising the image. The final FC layer is the output layer which returns a categorisation of the input image along with a confidence in the result.

Figure 1 shows a simplified schematic of the CNN architecture we use to create our plume identification model. The input image is first passed through two convolutional layers with 32 and 64 filters, respectively, followed by a maximum pooling layer. We then randomly drop 50% of the ~~data-layers~~ from the model, which helps to prevent over fitting of the data ([as recommended by ?](#)).
120 [recommended by ?](#)). The remaining data is then passed through two more convolutional layers of 128 and 256 filters, respectively, and another maximum pooling layer. This is followed by dropping another 50% of the data and flattening the array to one dimension to be fed into the FC layer that contains 512 nodes. Each CNN layer is then passed into a Rectified Linear Unit (ReLU) activation function before going into next layer. The last FC is passed into a softmax function to calculate the

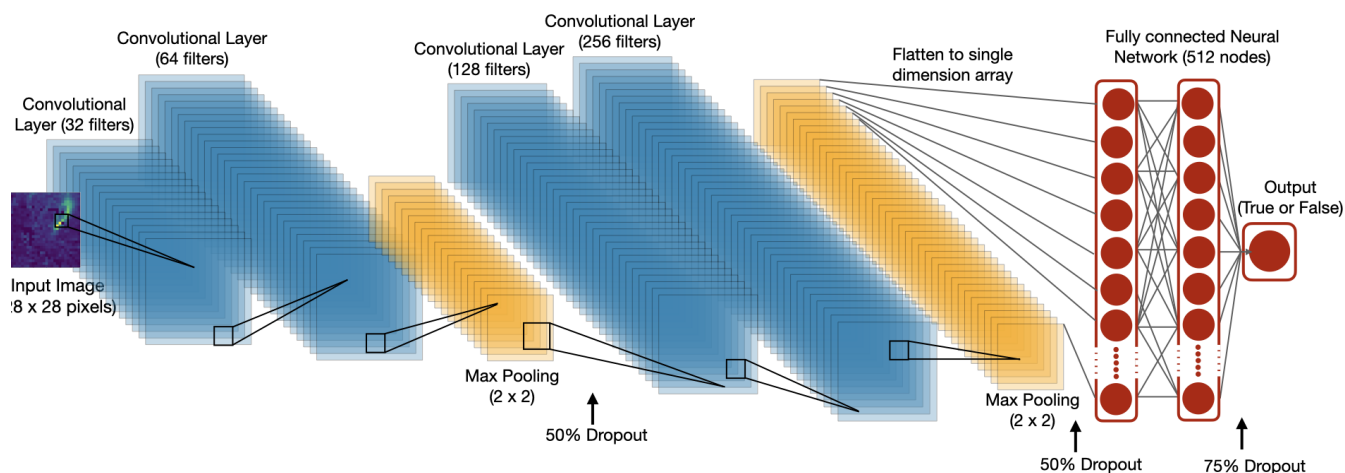


Figure 1. Simplified schematic of the convolutional neural network architecture to identify NO₂ plumes. See main text for further details.

probabilities that the image contains a plume or not. The optimiser used here is an AdamOptimizer, which helps to reduce the
 125 cost calculated by cross entropy. The model has a total of 4,892,770 trainable parameters.

Supervised Learning Strategy

To train our CNN model we use example images of TROPOMI NO₂ that can be classified as containing a plume or not. Each image is 28×28 pixels (approximately corresponding to 200 km×100 km) and were individually normalised to remove the influence of the magnitude of image-NO₂ features, a step that also improved model efficiency. We acknowledge that
 130 normalising each individual image could potentially lead to false detection if the background noise resembles a plume; the alternative of normalising the images to a standard value decreases the models ability to detect smaller emission sources and may lead to a larger number of false negatives. Figure 2 shows three example images from the level 2 TROPOMI NO₂ data considered to contain plumes used in the training dataset.

Determining whether an image contains a plume or not is a non-trivial task that is subject to human judgement and is
 135 consequently prone to error. Plumes are highly variable in both size and shape, can potentially be obscured by other features in the image, or, in some instances, multiple plumes can be found within a single image. In the first instance, we used a crowd-sourcing approach in which we posted images on <https://plume-spotter.herokuapp.com> and asked participants to determine whether an image contained a plume. A total of 41 participants classified 1565 unique images and created 13,750 classifications, a mean of 8.8 classifications per image. This is further described in Appendix A. However, we found that this approach did
 140 not produce consistent results, with a larger number of images inconclusively classified by the participants than the number of images for which the participants agreed. This result emphasizes the role of human bias in identifying plumes, which in the absence of any post-training check compromises the performance of the CNN model.

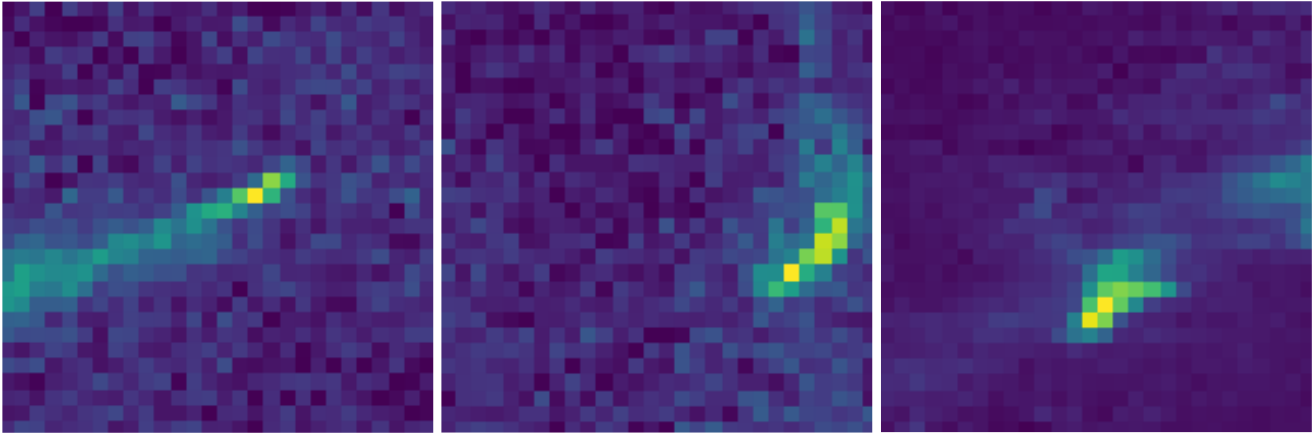


Figure 2. Three example individually normalized images of TROPOMI tropospheric column NO₂ that contain a plume.

Due to the lack of agreement in our crowd-sourced approach to plume identification, we created a dataset for this study based on the authors' judgement. We selected a total of 6086 images (3043 of which contained a plume) from across the globe for all times of year to minimize regional and seasonal biases. We used an iterative process to select images to train the model. We started with an initial set of images, randomly selected images that contained at least one plume, corrected the classification if necessary, ensuring an equal number of true and false images were included in the training set. The images were then randomly split in a 80:20 ratio to train the CNN model and test the trained model. We find that the resulting CNN model achieves an accuracy of >90% when compared against the test data.

Using the developed plume identification model, we processed two years (July 2018–June 2020) of TROPOMI tropospheric NO₂ data, resulting in 18 million individual 28×28 pixels images. Prior to running the model, we discarded images that included >40% invalid pixels, i.e., data that did not match our quality threshold as described above; this quality control step reduced the number of processed images to approximately 7.2 million. We then passed these images to our CNN model, which returned a Boolean variable that describes whether a plume was identified and an associated confidence level associated with the identification. We discard images for which the confidence threshold <75%. We find that our results are moderately sensitive to this value, with an approximate 10% change in the number of plumes found when changing the confidence threshold by ±15%.

[This confidence threshold can be adjusted to increase the number of identified plumes but at the expense of the confidence of the plumes being reported.](#) For each image in which a plume was identified, we extract the geographical coordinates of the plume by identifying the image pixel with the maximum value. We acknowledge this method could lead to inaccuracies as

the maximum pixel value in the image will not necessarily correspond to the origin of the plume [and may not identify all plumes \(e.g., images that contain multiple plumes\)](#), but we consider this [as-to be](#) a minor source of error. The area of one TROPOMI NO₂ pixel is approximately 24 km² so the plume origin could easily fall within this area. Each image has an associated timestamp from the satellite allowing us to build a dataset of the location and time of plumes spotted by TROPOMI.

3 Results

165 First, we assess the performance of the CNN model to identify plumes on global and regional spatial scales. We then use the locations of these plumes to study their ability to identify anthropogenic combustion sources of CO₂.

3.1 CNN Model Performance

Over our two year study period, the CNN model identified 310,020 images that contained at least one plume. After extracting the geographical locations for each plume location, we identified 62,040 (20%) images that were within 15 km of an active fire as determined by VIIRS thermal anomaly data and categorise these NO₂ plumes as being associated with biomass burning. We
170 assign the remaining 247,980 NO₂ plumes as originating from anthropogenic combustion.

Global Scale Plume Distributions

Figure 3 shows the location of NO₂ plumes from ~~burning fossil fuels~~ fossil fuel and biomass burning over our study period. We find anthropogenic combustion is widespread across the ~~global globe~~ (Figure 3a) with a focus over northern mid-latitudes, India and China, as expected. We also find coherent distributions of NO₂ plumes over the ocean along established shipping
175 routes. On the global scale, this is particularly noticeable in the Bay of Bengal between southern India and Southeast Asia, and between the Cape of Good Hope and north-west Africa and eastern Brazil. Shipping lanes are clearer on the regional scales we report below.

The cluster of plumes over northern Alaska (Figure 3a) is an excellent example of a geographic region where NO₂ emissions
180 are dwarfed compared to other point sources on a global scale so will not typically appear as a hot spot using other detection methods. We believe these are genuine detections, which we link to petroleum extraction activities in the National Petroleum Reserve–Alaska in the Alaska North Slope region.

The distribution of biomass burning NO₂ plumes (Figure 3b) identified using the CNN model and VIIRS data highlight geographical regions where we expect seasonal fire activity, with a high density of plumes over western, central and eastern
185 Africa, Colombia, Venezuela, Brazil and over Australia.

We acknowledge that a number of plumes that we classify as anthropogenic combustion occur in locations where we expect biomass burning, e.g., central Australia, various regions across the tropics, Siberia, and North America. We also acknowledge that anthropogenic plumes could be incorrectly labelled as biomass burning, especially where these emission types are co-located. While this suggest that our use of VIIRS is imperfect we find that our approach broadly achieves its goal.

190 Regional Scale Plume Distributions

Figure 4 shows anthropogenic combustion plumes we identify from July 2018 to June 2020 over Europe, contiguous US and southern Canada, China, and the Middle East. We have broadly classified these hotspots as major urban areas, power stations, and flaring regions. We identify major urban areas (populations >200,000) based on data from <https://www.natureearthdata.com/downloads/10m-cultural-vectors/10m-populated-places/>, fossil fuel power stations taken from the Global Power Plant

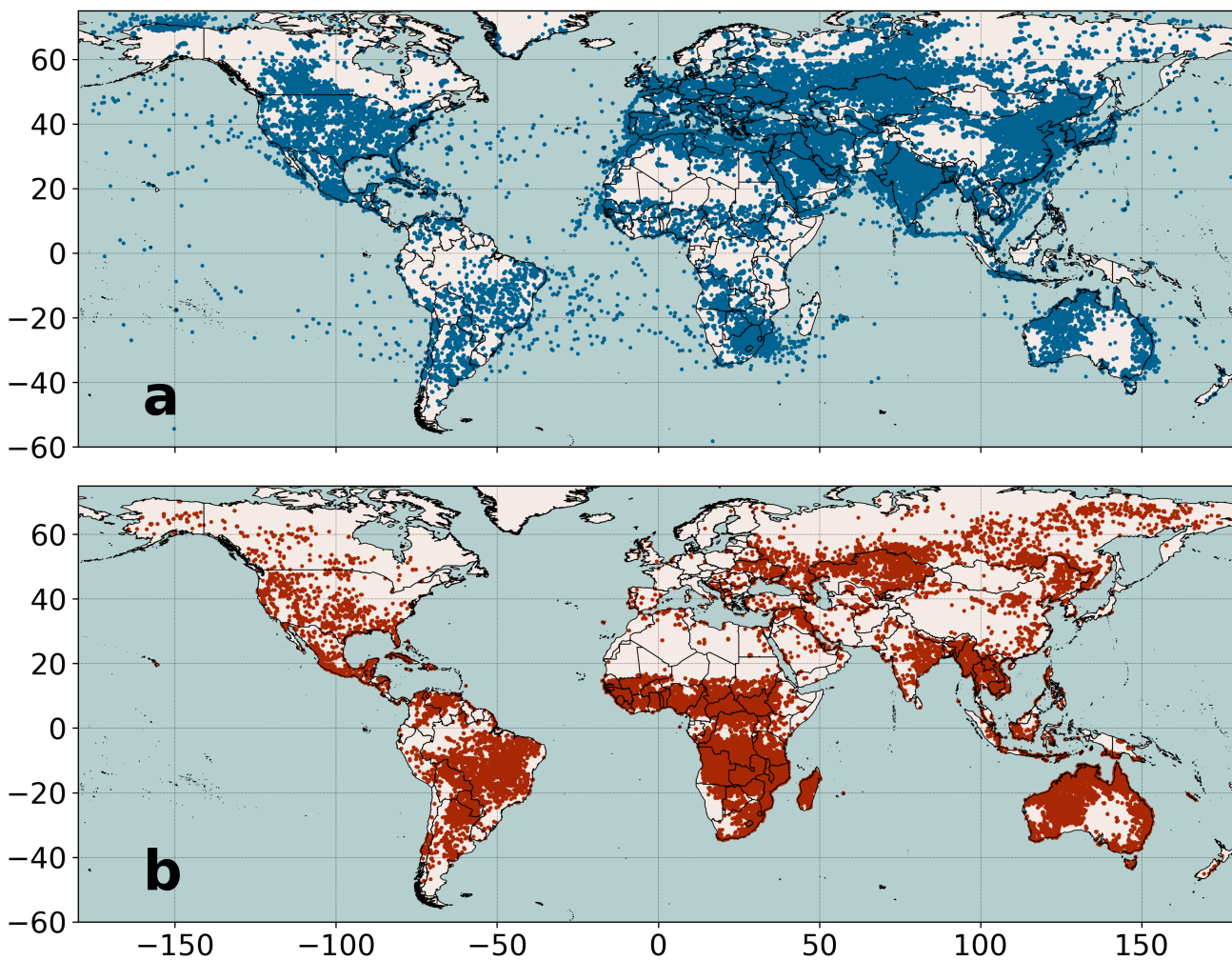


Figure 3. Geographical locations of individual TROPOMI NO₂ plumes identified using a CNN model, July 2018–June 2020. We attribute these plumes to a) anthropogenic combustion or b) biomass burning depending on whether the plume falls within 15 km of the nearest VIIRS thermal anomaly measurement.

195 Database (KTH Royal Institute of Technology, 2018), and oil and gas flaring regions based on data from <https://skytruth.org/flaring/>. We acknowledge that the power station database will be incomplete due to data availability and reliability across the globe (Byers et al., 2019). The location of oil and gas flaring used here, determined by nighttime thermal anomaly data from VIIRS, is clustered spatially and temporally and therefore may not coincide with the TROPOMI local overpass time of ~~1330-~~
13:30.

200 We find the highest density of plumes are found over large cities, e.g., Paris, Madrid, Riyadh, Beijing, Los Angeles and New York, and over busy ports such as Rotterdam, Porto, Cairo and Hong Kong (4a, b, c). Ship tracks are clearly seen through the Strait of Gibraltar (Figure 4a) and the Red Sea leading to the Suez Canal (Figure 4d). Plumes over China, Korea, and Japan are so dense they begin to overlap (figure 4c). We also find clusters of NO₂ plumes over and around power stations and flaring regions, with some notable exceptions, e.g., North Sea oil fields (Figure 4a), the oil fields in Oman and north-west Egypt
205 (Figure 4d) and the large number of power stations in the Midwestern United States (Figure 4b). The poor correspondence between flaring regions and NO₂ plumes may be due to differences in the overpass times of the data used, as discussed above. In general, the location of the NO₂ plumes and the coincidence with cities, power plants, and established shipping routes provides us with confidence of the CNN model we have developed. Discrepancies between known sources and the large areas of clustered NO₂ plumes, especially over China and India, and power plants that do not have any associated plumes suggest
210 that inventories being used to identify power plants are out of date. Further discrepancies may be due to detecting sources outwith the inventories used in this analysis (e.g. small settlements with large industrial emissions). Achieving this level of detail using conventional plume detection methods would be difficult.

Table 1 shows the top ten countries with the most fossil fuel plumes identified over the two year study period. China contains the most plumes, representing 20% of all the plumes found during our study period. These plumes are mainly located around
215 the highly urbanised and heavily industrial east of China (Figure 4c), encompassing Beijing, Hebei and Shenyang in the north east. India is a close second with 17% where most plumes are over New Delhi, Mundra Port in the north-western Gurjrat region, and large coal mining areas to the north-east of the country (Figure 3a). Russia is responsible for 12% of plumes, spread over multiple cities and fossil fuel extraction works across the west of the country. The Middle East, including Iran, Saudi Arabia, and Iraq, are collectively responsible for more than 26% of plumes. These plumes are mostly coincident with
220 known regions of petroleum extraction and processing. Values over eastern Egypt appear to follow the Nile and abruptly stop before Sudan. Plumes over the US mainly coincide with major urban areas and flaring regions, with clusters found over some of the major oil and gas extraction sites, e.g., San Juan Basin, Permian Basin, Niobrara Formation, and Bakken Formation. There is also some evidence of oil and gas extraction over Mexico, e.g. Burro Picachos and Sabinas, and over Kazakhstan, e.g. the Aktobe oil fields.

225 We acknowledge that statistics reported here will reflect the number of cloud-free days over specific regions. The frequency of global plume detections does change every month but does not show any seasonal cycle (not shown), even though there is a seasonal cycle of plumes detections at high latitudes due to low sun angles during winter. Over our study period, the monthly mean number of fossil fuel NO₂ plumes is 11,100 and biomass burning NO₂ plumes is 2,787. The largest number of fossil fuel plumes and biomass burning plumes were found during March 2019 and August 2018, respectively. Persistence of plume

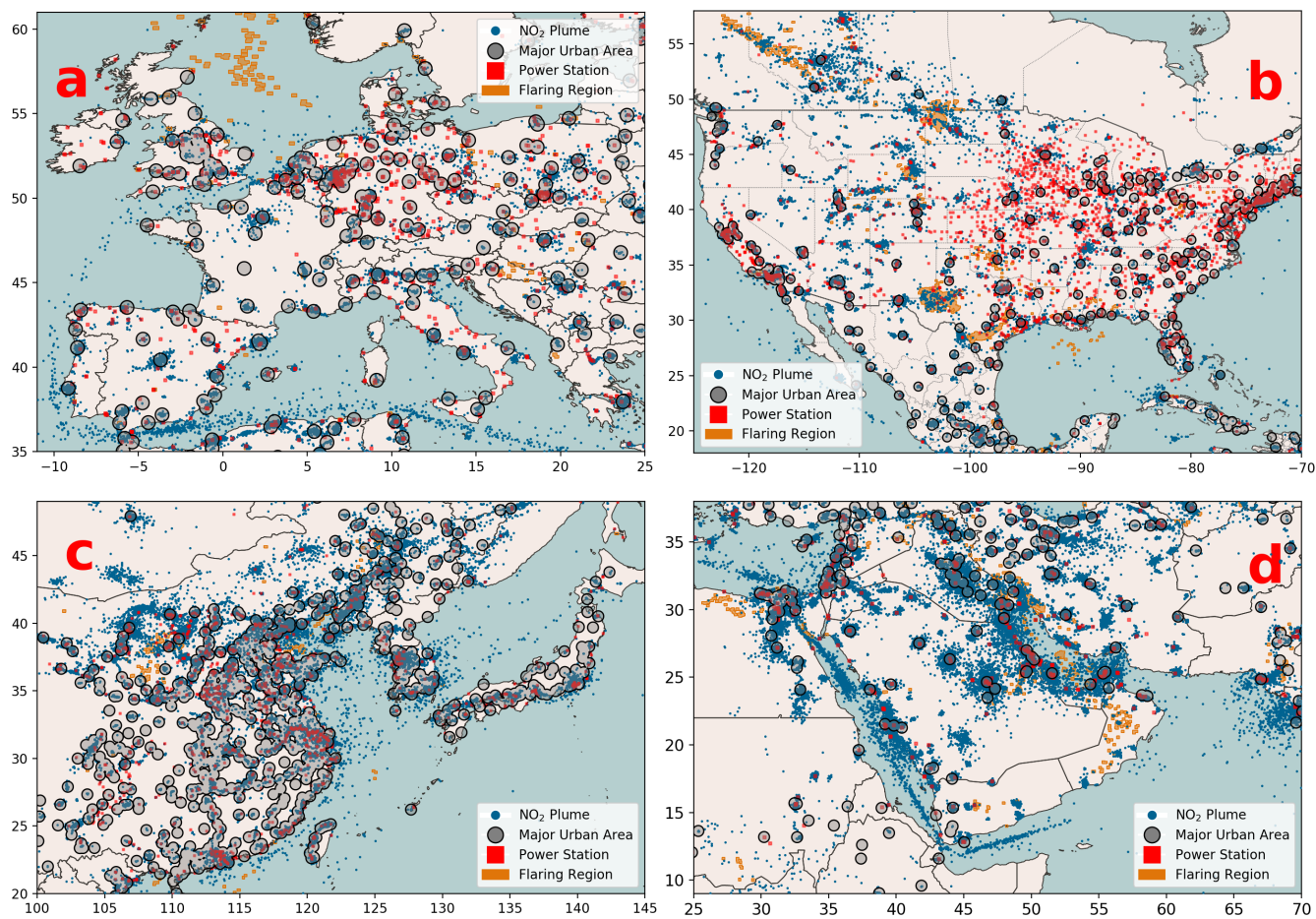


Figure 4. Geographical locations of individual anthropogenic combustion plumes (denoted by blue dots) identified from TROPOMI tropospheric NO₂ column data using a CNN model, July 2018–June 2020. a) Europe, b) North America, c) China, and d) Middle East. Also shown are the locations of major urban areas (populations >200,000) denoted by grey circles; coal, oil, and nature gas power stations denoted by red squares; and oil and gas flaring locations are shown as orange rectangles.

Table 1. Top ten countries containing the most fossil fuel plumes identified by TROPOMI NO₂ plumes, July 2018–June 2020.

| Rank | Country | Number of Plumes | % Total |
|------|--------------|------------------|---------|
| 1 | China | 27290 | 19.9 |
| 2 | India | 23258 | 17.0 |
| 3 | Russia | 17225 | 12.6 |
| 4 | Iran | 16035 | 11.7 |
| 5 | Saudi Arabia | 14924 | 10.9 |
| 6 | USA | 13873 | 10.1 |
| 7 | Mexico | 7387 | 5.4 |
| 8 | Kazakhstan | 6197 | 4.5 |
| 9 | Egypt | 5389 | 4.0 |
| 10 | Iraq | 5336 | 3.9 |

230 detection locations (Figure 4) provide confidence that we [are](#) observing point sources. We find a total of 21,802 plumes detected over the oceans, mostly focused along ships tracks.

Table 2 shows the 20 cities across the globe with the most fossil fuel plumes identified over our two year study period. As previously discussed, cities that are likely to have more high quality (cloud-free) retrievals are more likely to have plumes spotted over them, however the list of cities with the largest number of plumes is as expected based on knowledge of their large
235 emissions. All of these 20 cities are within latitudes 35°S–35° N. Six of the cities are in India with two each in neighbouring Pakistan and Bangladesh. Los Angeles and Phoenix are the only two US cities in the list, two in Mexico (Mexico City and Torreón), and two in South America (Buenos Aires and Santiago). The others in north Africa (Cairo, Egypt and Khartoum, Sudan). No cities in China are found in the top 20 despite most plumes being found in the country. We attribute this to large areas of industry in China being located outwith city boundaries.

240 3.2 What Fraction of Anthropogenic CO₂ Emissions are Identified Using NO₂ Plumes?

The low frequency of corresponding TROPOMI NO₂ measurements and satellite observations of CO₂ precludes any meaningful statistical analysis of of CO₂:NO₂ (not shown). We anticipate this [will](#) improve with the launch of new satellites, particularly with the Copernicus CO₂ constellation (CO2M) due for launch in 2025 and the Japanese Global Observing SATellite for Greenhouse gases and Water cycle (GOSAT-GW) due for launch in 2023.

245 To help us understand the fraction of global anthropogenic CO₂ emissions that are identified using our plume identification model, we sample the Open-source Data Inventory for Anthropogenic CO₂ (ODIAC, 2020 release, (Oda and Maksyutov, 2011; Oda et al., 2018; Oda and Maksyutov, 2021)) where there is an NO₂ plume. We use the monthly 1° × 1° ODIAC gridded land CO₂ emissions dataset for 2018 and 2019, and in the absence of 2020 data we use the 2019 ODIAC emissions for January–

Table 2. Top twenty cities containing the most fossil fuel plumes over the study period.

| Rank | City | Number of Plumes |
|------|-------------------------|------------------|
| 1 | Delhi, India | 1015 |
| 2 | Los Angeles, USA | 738 |
| 3 | Dakha, Bangladesh | 726 |
| 4 | Cairo, Egypt | 654 |
| 5 | Phoenix, USA | 537 |
| 6 | Lahore, Pakistan | 516 |
| 7 | Kabul, Afghanistan | 516 |
| 8 | Khartoum, Sudan | 491 |
| 9 | Surabaya, India | 462 |
| 10 | Rawalpindi, Pakistan | 412 |
| 11 | Kolkata, India | 409 |
| 12 | Ahmedabad, India | 378 |
| 13 | Chittagong, Bangladesh | 367 |
| 14 | Buenos Aires, Argentina | 360 |
| 14 | Santiago, Chile | 360 |
| 16 | Mexico City, Mexico | 354 |
| 17 | Torreón, Mexico | 349 |
| 18 | Surat, India | 325 |
| 19 | Mumbai, India | 321 |
| 20 | Seoul, South Korea | 321 |

June 2020 to compare against the plume dataset. We do not anticipate that the COVID-19 related lockdowns of 2020 will significantly impact our results as the reduction in CO₂ emissions were less than expected (?). We sample the ODIAC dataset between -50°– 50° north to remove the impact of fewer observations during winter months. For this comparison, we assume that all anthropogenic combustion sources of CO₂ in the ODIAC dataset co-emit NO₂ and therefore can be used as geographical validation for the plume detection dataset.

We sample the ODIAC dataset at the location and month of each NO₂ plume identified using our model. Figure 5 shows the cumulative percentage of total emissions and the corresponding emission rate described as a function of the percentage of sources (from large to small) for all the ODIAC dataset and the ODIAC dataset sampled at the NO₂ plume locations. We find that for ODIAC emissions, large sources (>1 gC/m²/day) account for approximately 25% of all sources but contribute approximately 90% to the total emissions. The ODIAC emissions sampled by the NO₂ plumes accounted for 92% of all global CO₂ emissions, described by 56% of all sources. The remaining 8% of emissions, described by 44% of all sources, typically

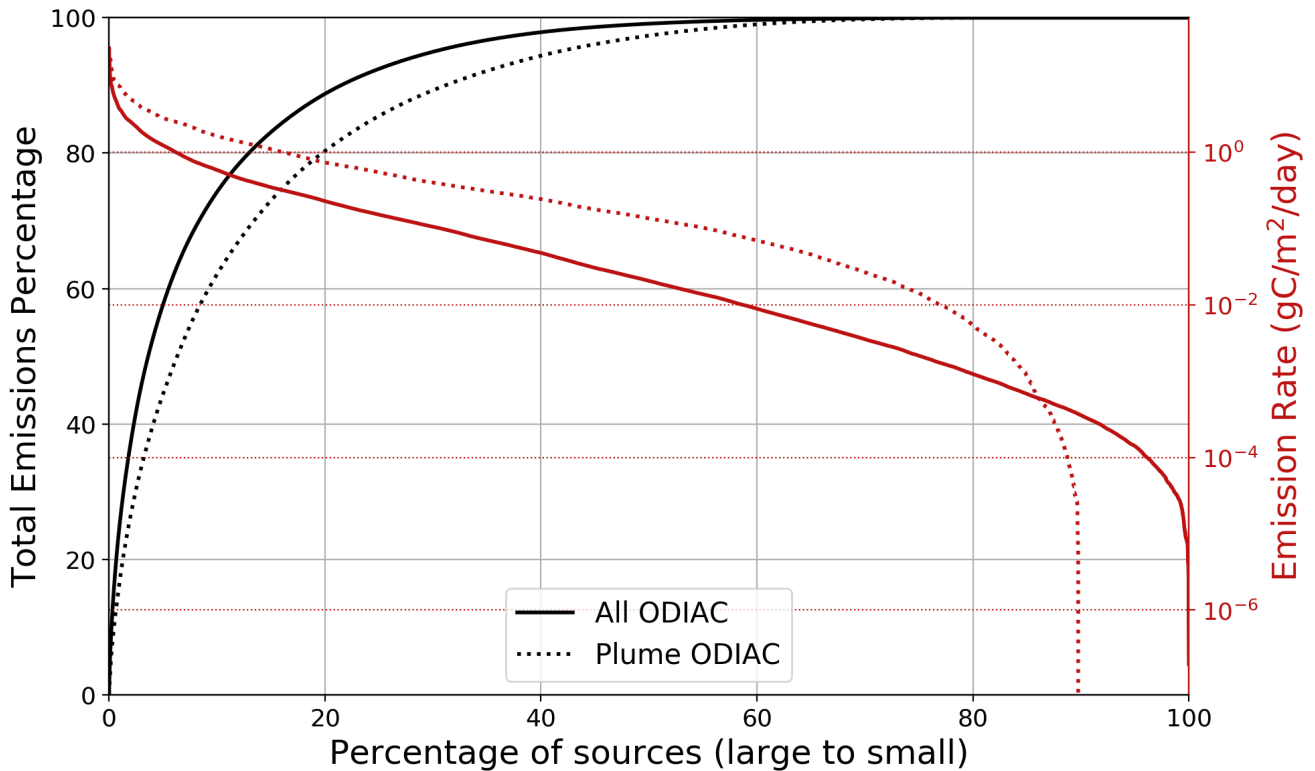


Figure 5. The cumulative total emission percentage as function of source size (black) and emission rate as a function of source size (red) for all ODIAC (solid line) and ODIAC sampled at plume locations (dotted line).

260 have emissions $<0.18 \text{ gC/m}^2/\text{day}$. This suggests that our method of identifying NO_2 plumes is biased towards the largest end of the emission spectrum and is less sensitive to the smallest emissions. This limit of detection does not lead to a large discrepancy in the total emissions being sampled by the NO_2 plumes, reflecting the disproportionate role of large emission sources on the total emission budget.

Figure 6 shows the ODIAC emissions where no NO_2 plumes ~~where were~~ detected. Out of these undetected sources, 95%
 265 have emission rates $<0.18 \text{ gC/m}^2/\text{day}$ and only nine locations have an emission rate $>1 \text{ gC/m}^2/\text{day}$ denoted by the green circles. Five of these locations are situated in the USA, with the remaining in Colombia, China, Japan and Slovenia. The locations in the USA are all between large cities, connected by highways that are not described by single point sources. The source in Colombia is located in an area of persistent cloud cover ($>80\%$ of the year) and therefore will have fewer high quality observations from TROPOMI. The reason for the missed large sources over China, Japan and Slovenia are unclear.

270 Figure 5 also shows that 10% of our plumes do not correspond to ODIAC CO_2 emissions. This is due mostly to plumes over the ocean associated with ship tracks (Figures 3 and 4), but there will be instances where fires have not been removed using

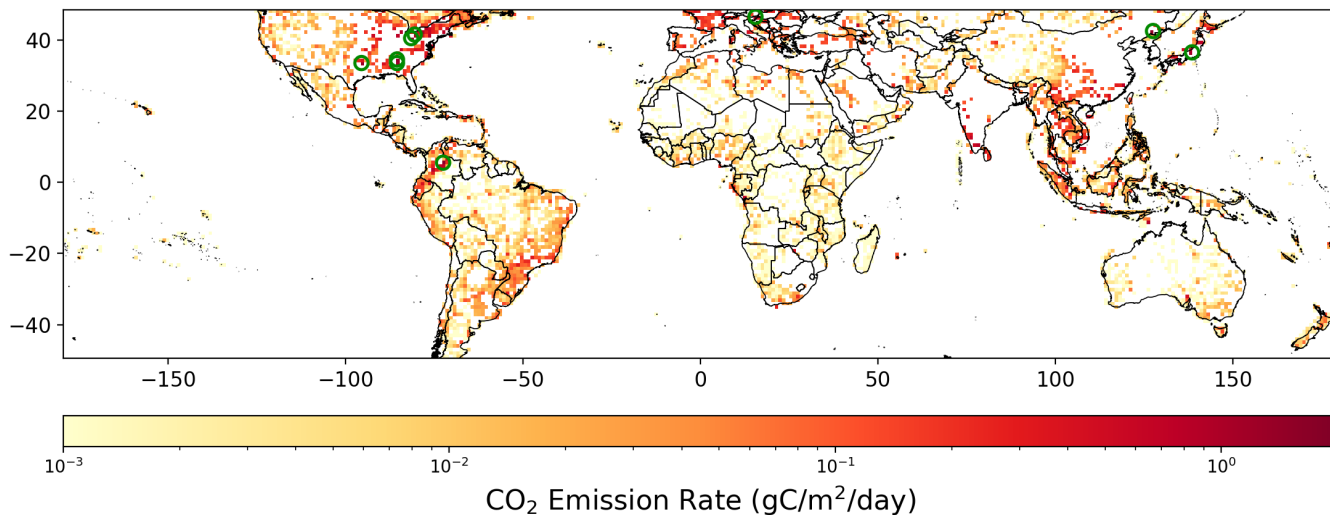


Figure 6. CO₂ emission rates as per the ODIAC inventory where no plumes were detected. The green circles indicate sources greater than 1 gC/m²/day.

our VIIRS criterion (described above) and possibly false detections. Here, we also consider the possibility that the emission inventory is incomplete for some reason.

Figure 7 shows four examples of clusters of plumes spotted by the detection method which do not have any associated ODIAC emissions. The clustering of the plumes suggests they are highly unlikely to be false detections and the persistence of the features over multiple years suggests it is unlikely to be biomass burning. Although accurate determination of the emissions associated with these hotspots is outside the scope of this paper, we hypothesize based on satellite imagery from Google Maps that these are regions of fossil fuel extraction and processing (coal in China and oil and gas in Mali, Saudi Arabia and Iraq). Having the ability to detect these plumes automatically provides a method of frequently updating emission inventories. Although these clusters of plumes could be persistent errors from highly reflective features such as salt lakes and solar panels, it is unlikely that they would appear as plume shaped anomalies and therefore are less likely to be picked up by the CNN model.

4 Discussion and Conclusions

We have developed a convolutional neural network (CNN) to identify plumes of atmospheric nitrogen dioxide (NO₂), a tracer of **incomplete** combustion. We have trained the model using a small subset of available images from the TROPOspheric Monitoring Instrument, aboard Sentinel-5P. The resulting CNN, capable of identifying plumes with a success rate >90%, reveals a rich distribution of plumes across the globe, which correspond to large city centres, power plants, oil and gas production, and shipping routes. Many of these features would be difficult to isolate without the use of a deep learning model.

The impetus for our study is using NO₂ as a tracer for anthropogenic emissions of CO₂ and methane from combustion. We aim to demonstrate the potential of this method to exploit NO₂ observations in conjunction with other relevant data and

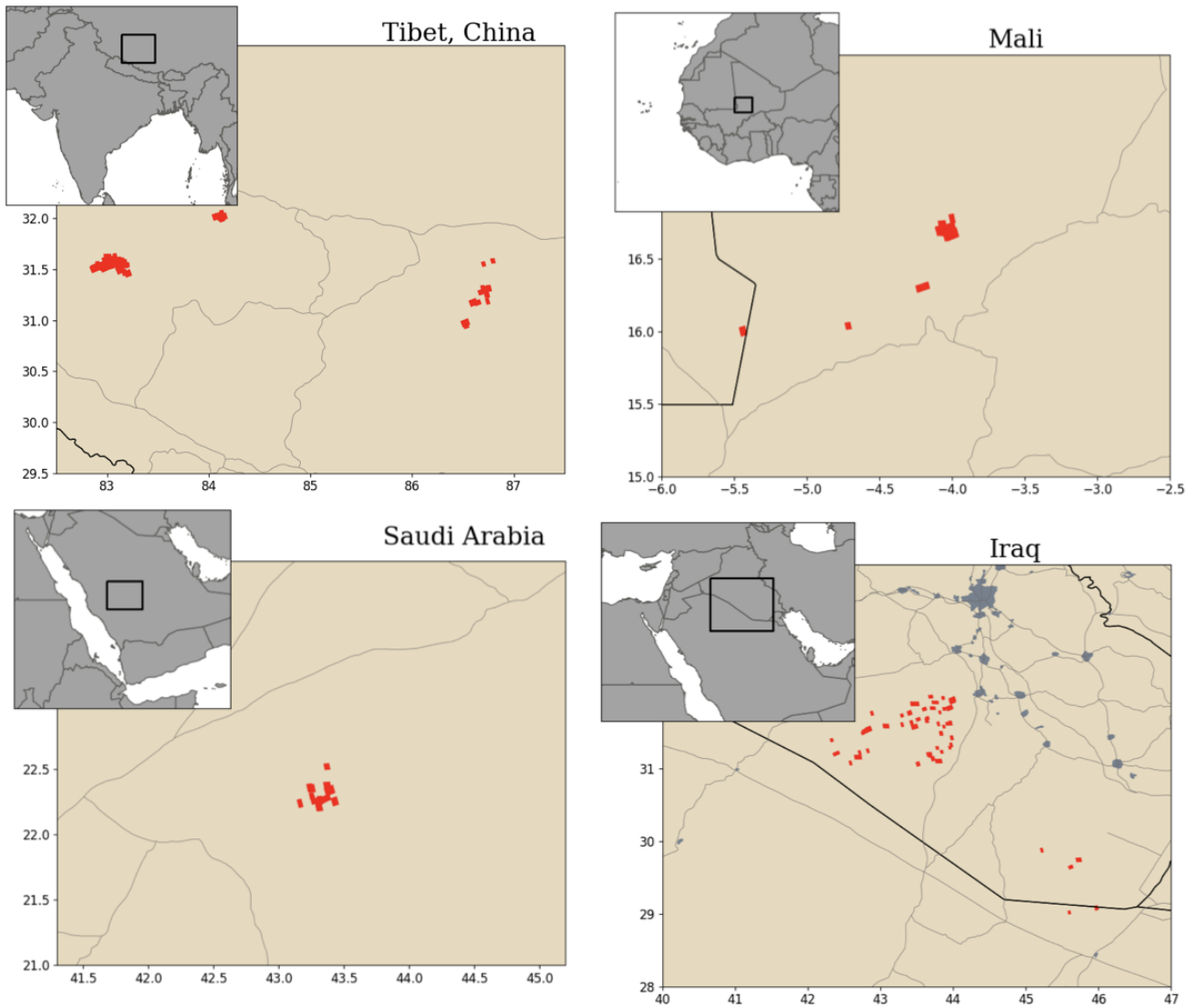


Figure 7. Example locations with plume clusters that are not associated with ODIAC CO₂ emissions. The light grey lines show major roads and urban areas are shown by grey patches.

290 known relationships with gases such as CO₂ and methane to improve emission estimates. The main advantage of using NO₂
is its comparatively short atmospheric lifetime, allowing to relate elevated values to local emissions. We have attempted to
remove biomass burning using thermal anomaly data, which is often used to locate open biomass burning. This is not a
perfect method, but our results suggest it works reasonably well. To evaluate our ability to observe anthropogenic emissions
of CO₂ we have used the Open-Data Inventory for Anthropogenic Carbon dioxide (ODIAC) (Oda et al., 2018), an established
295 emission inventory used widely by the community. We have chosen this approach because we found the number of coincident
measurements of TROPOMI NO₂ and OCO-2/GOSAT CO₂ was not sufficient to generate meaningful statistics (not shown).
By sampling ODIAC at the location of NO₂ plumes, we find that the CNN model describes 92% of global anthropogenic CO₂
emissions. The remaining 8% of emissions, mostly <0.2 gC/m²/day, provide an effective limit of detection for our method.

Our use of NO₂ to describe anthropogenic emissions of CO₂ and methane relies on them being co-emitted. We find no
300 evidence in the literature of NO_x scrubbers being used for power plants, although they are used by the chemical industry,
which is a sector that represents a comparatively small emission of CO₂. The validity of using NO₂ as a proxy for CO₂
emissions may change in the future as non-catalytic reduction and low-NO_x burner technologies begin to mature. We find no
correlation between NO₂ plumes and the location of natural gas flaring, which is unexpected since this will be an ~~inefficient~~
~~form of~~ major form of combustion and therefore should result in a significant source of NO₂. We have no explanation for
305 this observation, except if flaring occurs at preferential times of day that do not coincide with the early afternoon overpass
time of TROPOMI. Our approach will also miss direct CO₂ and methane emissions, e.g., pipeline leaks, coal mines (Palmer
et al., 2021). For these sources, we still have to rely on high spatially-resolved CO₂ and methane data (Varon et al., 2021).
In contrast, we also find persistent NO₂ plumes from regions where ODIAC does not currently include CO₂ emissions ~~-that~~
may be real or reflect false positives. False positives can result from data retrieval errors or from human error in the supervised
310 learning strategy necessary to develop the CNN model. Based on the location and inspection of satellite imagery provided by
Google Maps we suggest these are likely to be associated with new areas where fossils fuels are being extracted or combusted
for energy generation. This demonstrates how NO₂ plumes could be used to inform emission inventories about the location of
new point sources across the globe. Generally, it is important for domain-level expertise to evaluate data products developed
by deep learning models to minimize the influence of false positives.

315 The NO₂ plume detection algorithm does not quantify anthropogenic emissions of CO₂ or methane, but it provides a method
to refine the development of measurement, reporting and verification systems that form the backbone of the Paris Agreement.
The launch of Copernicus CO₂ service, including a constellation of satellites that will measure CO₂, methane, and NO₂, will
result in a step-change in the number of coincident measurements and thereby will improve our ability to use simultaneously
use NO₂ with CO₂ and methane to quantify anthropogenic emissions of CO₂ and methane.

320 *Data availability.* TROPOMI NO₂ data is available from <https://scihub.copernicus.eu>, VIIRS biomass burning data is available from <https://firms.modaps.eosdis.nasa.gov/download/> and the ODIAC emission dataset is available from <http://www.odiac.org/index.html>.

Appendix A: Supervised Learning Using Crowd Sourcing

We created an online tool (<https://plume-spotter.herokuapp.com>) that briefly described what a plume is with a few examples of what they can look like and then displays 18 images in a 6×3 grid. These images were selected at random from an initial
325 1565 unique images which were compiled by the authors. Each participant was then invited to click on the images in the grid which they considered to contain a plume and then to submit their selection. Once their results were submitted, the participant was asked to classify 18 more random images. We then used these results to determine how many true (contains a plume) or false (does not contain a plume) classifications each image received. We designed this method to reduce the amount of human error and individual judgement on what could be considered a plume or not.

330 A total of 41 participants classified 1565 unique images and created 13,750 classifications, a mean of 8.8 classifications per image. The number of classifications per participant is unknown as this was an online tool open to the public and relied on how much time they were willing to give.

For this crowd sourcing experiment, there were approximately 580 images for which 0–10% of classifications were true, i.e. high confidence that these images do not contain a plume. There were approximately 130 images for which 90–100% of
335 classifications were true. For the remaining (≈ 800) images there was little agreement between the participants about whether they included a plume or not. Since the majority of the images from the initial dataset did not have a high level of agreement on whether they contained a plume or not, we decided that this dataset was not suitable to train our model.

Going forward, this experiment could be refined to help improve the results and give us more confidence in the classifications of the images. The experiment assumed all images did not contain a plume unless the participant changed the classification,
340 this meant that if a participant did not see an image then it would be considered not to contain a plume. We also noticed that what was considered a plume changed depending on the surrounding images. If the participant is unsure whether an image contains a plume or not, they may be more likely to keep the image classification as false if a surrounding image contained a clearer plume, or vice versa for is the surrounding images definitely did not contain a plume.

Author contributions. DPF and PIP designed the research; DPF prepared the calculations with initial input from TZ; DPF and PIP analyzed
345 the results and wrote the paper, with comments from TZ.

Competing interests. No competing interests are present.

Acknowledgements. DPF, PIP and TZ gratefully acknowledge funding from the National Centre for Earth Observation funded by the National Environment Research Council (NE/R016518/1).

References

- 350 Boersma, K., Dirksen, R., Brunner, D., Zhou, Y., Huijnen, V., Eskes, H., Veefkind, J., Kleipool, Q., Dobber, M., and Stammes, P.: An improved retrieval of tropospheric NO₂ columns from the Ozone Monitoring Instrument, *Adv. Mater.*, 2010.
- Bovensmann, H., Buchwitz, M., Burrows, J. P., Reuter, M., Krings, T., Gerilowski, K., Schneising, O., Heymann, J., Tretner, A., and Erzinger, J.: A remote sensing technique for global monitoring of power plant CO₂ emissions from space and related applications, *Atmospheric Measurement Techniques*, 3, 781–811, <https://doi.org/10.5194/amt-3-781-2010>, 2010.
- 355 Broquet, G., Bréon, F.-M., Renault, E., Buchwitz, M., Reuter, M., Bovensmann, H., Chevallier, F., Wu, L., and Ciais, P.: The potential of satellite spectro-imagery for monitoring CO₂ emissions from large cities, *Atmospheric Measurement Techniques*, 11, 681–708, <https://doi.org/10.5194/amt-11-681-2018>, 2018.
- Brunner, D., Kuhlmann, G., Marshall, J., Clément, V., Fuhrer, O., Broquet, G., Löscher, A., and Meijer, Y.: Accounting for the vertical distribution of emissions in atmospheric CO₂ simulations, *Atmospheric Chemistry and Physics*, 19, 4541–4559, <https://doi.org/10.5194/acp-19-4541-2019>, 2019.
- 360 Byers, L., Friedrich, J., Hennig, R., Kressig, A., McCormick, C., and Malaguzzi Valeri, L.: A Global Database of Power Plants, www.wri.org/publication/global-database-power-plants, 2019.
- de Gouw, J. A., Veefkind, J. P., Roosenbrand, E., Dix, B., Lin, J. C., Landgraf, J., and Levelt, P. F.: Daily Satellite Observations of Methane from Oil and Gas Production Regions in the United States, *Scientific Reports*, 10, 1379, 2020.
- 365 Duren, R. M., Thorpe, A. K., Foster, K. T., Rafiq, T., Hopkins, F. M., Yadav, V., Bue, B. D., Thompson, D. R., Conley, S., Colombi, N. K., Frankenberg, C., McCubbin, I. B., Eastwood, M. L., Falk, M., Herner, J. D., Croes, B. E., Green, R. O., and Miller, C. E.: California’s methane super-emitters, *Nature*, 575, 180–184, <https://doi.org/10.1038/s41586-019-1720-3>, 2019.
- Edenhofer, O., Pichs-Madruga, R., Sokona, Y., Farahani, E., Kadner, S., Seyboth, K., Adler, A., Baum, I., Brunner, S., Eickemeier, P., Kriemann, B., Savolainen, J., S., S., von Stechow, C., T., Z., and C., M. J., eds.: *Climate Change 2014: Mitigation of Climate Change. Contribution of Working Group III to the Fifth Assessment Report of the Intergovernmental Panel on Climate Change*, Cambridge University Press, 2014.
- 370 Friedlingstein, P., O’Sullivan, M., Jones, M. W., Andrew, R. M., Hauck, J., Olsen, A., Peters, G. P., Peters, W., Pongratz, J., Sitch, S., Le Quééré, C., Canadell, J. G., Ciais, P., Jackson, R. B., Alin, S., Aragão, L. E. O. C., Arneeth, A., Arora, V., Bates, N. R., Becker, M., Benoit-Cattin, A., Bittig, H. C., Bopp, L., Bultan, S., Chandra, N., Chevallier, F., Chini, L. P., Evans, W., Florentie, L., Forster, P. M., Gasser, T., Gehlen, M., Gilfillan, D., Gkritzalis, T., Gregor, L., Gruber, N., Harris, I., Hartung, K., Haverd, V., Houghton, R. A., Ilyina, T., Jain, A. K., Joetzjer, E., Kadono, K., Kato, E., Kitidis, V., Korsbakken, J. I., Landschützer, P., Lefèvre, N., Lenton, A., Lienert, S., Liu, Z., Lombardozzi, D., Marland, G., Metzl, N., Munro, D. R., Nabel, J. E. M. S., Nakaoka, S.-I., Niwa, Y., O’Brien, K., Ono, T., Palmer, P. I., Pierrot, D., Poulter, B., Resplandy, L., Robertson, E., Rödenbeck, C., Schwinger, J., Séférian, R., Skjelvan, I., Smith, A. J. P., Sutton, A. J., Tanhua, T., Tans, P. P., Tian, H., Tilbrook, B., van der Werf, G., Vuichard, N., Walker, A. P., Wanninkhof, R., Watson, A. J.,
- 380 Willis, D., Wiltshire, A. J., Yuan, W., Yue, X., and Zaehle, S.: Global Carbon Budget 2020, *Earth System Science Data*, 12, 3269–3340, <https://doi.org/10.5194/essd-12-3269-2020>, 2020.
- Gurney, K. R., Liang, J., Roest, G., Song, Y., Mueller, K., and Lauvaux, T.: Under-reporting of greenhouse gas emissions in U.S. cities, *Nature Communications*, 12, 553, <https://doi.org/10.1038/s41467-020-20871-0>, 2021.
- Hakkaraïnen, J., Ialongo, I., and Tamminen, J.: Direct space-based observations of anthropogenic CO₂ emission areas from OCO-2, *Geophysical Research Letters*, 43, <https://doi.org/10.1002/2016GL070885>, 2016.
- 385

- Hakkarainen, J., Szeląg, M. E., Ialongo, I., Retscher, C., Oda, T., and Crisp, D.: Analyzing nitrogen oxides to carbon dioxide emission ratios from space: A case study of Matimba Power Station in South Africa, *Atmospheric Environment: X*, 10, 100110, <https://doi.org/10.1016/j.aeaoa.2021.100110>, 2021.
- 390 Ialongo, I., Stepanova, N., Hakkarainen, J., Virta, H., and Gritsenko, D.: Satellite-based estimates of nitrogen oxide and methane emissions from gas flaring and oil production activities in Sakha Republic, Russia, *Atmospheric Environment: X*, 11, 100114, <https://doi.org/10.1016/j.aeaoa.2021.100114>, 2021.
- Janssens-Maenhout, G., Pinty, B., Dowell, M., Zunker, H., Andersson, E., Balsamo, G., Bézy, J.-L., Brunhes, T., Boesch, H., Bojkov, B., Brunner, D., Buchwitz, M., Crisp, D., Ciais, P., Counet, P., Dee, D., van der Gon, H. D., Dolman, H., Drinkwater, M. R., Dubovik, O., Engelen, R., Fehr, T., Fernandez, V., Heimann, M., Holmlund, K., Houweling, S., Husband, R., Juvyns, O., Kentarchos, A., Landgraf, J., 395 Lang, R., Långsøcher, A., Marshall, J., Meijer, Y., Nakajima, M., Palmer, P. I., Peylin, P., Rayner, P., Scholze, M., Sierk, B., Tamminen, J., and Veefkind, P.: Toward an Operational Anthropogenic CO₂ Emissions Monitoring and Verification Support Capacity, *Bulletin of the American Meteorological Society*, 101, E1439 – E1451, <https://doi.org/10.1175/BAMS-D-19-0017.1>, 2020.
- Kort, E. A., Frankenberg, C., Miller, C. E., and Oda, T.: Space-based observations of megacity carbon dioxide, *Geophysical Research Letters*, 39, n/a–n/a, <https://doi.org/10.1029/2012GL052738>, 2012.
- 400 KTH Royal Institute of Technology: Global Power Plant Database - Datasets - Data | World Resources Institute, <https://datasets.wri.org/dataset/globalpowerplantdatabase>, 2018.
- Kuhlmann, G., Broquet, G., Marshall, J., Clément, V., Löscher, A., Meijer, Y., and Brunner, D.: Detectability of CO₂ emission plumes of cities and power plants with the Copernicus Anthropogenic CO₂ Monitoring (CO₂M) mission, *Atmospheric Measurement Techniques*, 12, 6695–6719, <https://doi.org/10.5194/amt-12-6695-2019>, 2019.
- 405 Kuhlmann, G., Brunner, D., Broquet, G., and Meijer, Y.: Quantifying CO₂ emissions of a city with the Copernicus Anthropogenic CO₂ Monitoring satellite mission, *Atmospheric Measurement Techniques*, 13, 6733–6754, <https://doi.org/10.5194/amt-13-6733-2020>, 2020.
- Lary, D. J., Alavi, A. H., Gandomi, A. H., and Walker, A. L.: Machine learning in geosciences and remote sensing, *Geoscience Frontiers*, 7, 3–10, <https://doi.org/10.1016/j.gsf.2015.07.003>, 2016.
- 410 Liu, F., Duncan, B. N., Krotkov, N. A., Lamsal, L. N., Beirle, S., Griffin, D., McLinden, C. A., Goldberg, D. L., and Lu, Z.: A methodology to constrain carbon dioxide emissions from coal-fired power plants using satellite observations of co-emitted nitrogen dioxide, *Atmospheric Chemistry and Physics*, 20, 99–116, <https://doi.org/10.5194/acp-20-99-2020>, 2020.
- Lorente, A., Folkert Boersma, K., Yu, H., Dörner, S., Hilboll, A., Richter, A., Liu, M., Lamsal, L. N., Barkley, M., Smedt, I. D., et al.: Structural uncertainty in air mass factor calculation for NO₂ and HCHO satellite retrievals, *Atmospheric Measurement Techniques*, 10, 415 759–782, 2017.
- Maxwell, A. E., Warner, T. A., and Fang, F.: Implementation of machine-learning classification in remote sensing: an applied review, *International Journal of Remote Sensing*, 39, 2784–2817, <https://doi.org/10.1080/01431161.2018.1433343>, 2018.
- Nassar, R., Hill, T. G., McLinden, C. A., Wunch, D., Jones, D. B. A., and Crisp, D.: Quantifying CO₂ Emissions From Individual Power Plants From Space, *Geophysical Research Letters*, 44, <https://doi.org/10.1002/2017GL074702>, 2017.
- 420 Oda, T. and Maksyutov, S.: A very high-resolution (1km x 1km) global fossil fuel CO₂ emission inventory derived using a point source database and satellite observations of nighttime lights, *Atmospheric Chemistry and Physics*, 11, 543–556, <https://doi.org/10.5194/acp-11-543-2011>, 2011.

- Oda, T. and Maksyutov, S.: ODIAC Fossil Fuel CO₂ Emissions Dataset (Version name: ODIAC2020b), Center for Global Environmental Research, National Institute for Environmental Studies, <https://doi.org/10.17595/20170411.001>, 2021.
- 425 Oda, T., Maksyutov, S., and Andres, R. J.: The Open-source Data Inventory for Anthropogenic CO₂, version 2016 (ODIAC2016): a global monthly fossil fuel CO₂ gridded emissions data product for tracer transport simulations and surface flux inversions, *Earth System Science Data*, 10, 87–107, <https://doi.org/10.5194/essd-10-87-2018>, 2018.
- Organization, I. M.: Fourth IMO Greenhouse Gas Study, Tech. rep., International Marine Organization, 2020.
- Palmer, P. I., Feng, L., Lunt, M. F., Parker, R. J., Boesch, H., Lan, X., Lorente, A., and Borsdorff, T.: The added value of satellite observations
430 of methane for understanding the contemporary methane budget, *Phil. Trans. A.*, 2021.
- Poore, J. and Nemecek, T.: Reducing food's environmental impacts through producers and consumers, *Science*, 360, 987–992, <https://doi.org/10.1126/science.aag0216>, 2018.
- Reuter, M., Buchwitz, M., Schneising, O., Krautwurst, S., O'Dell, C. W., Richter, A., Bovensmann, H., and Burrows, J. P.: Towards monitoring localized CO₂ emissions from space: co-located regional CO₂ and
435 NO_x enhancements observed by the OCO-2 and S5P satellite, *Atmospheric Chemistry and Physics*, 19, 9371–9383, <https://doi.org/10.5194/acp-19-9371-2019>, 2019.
- Strandgren, J., Krutz, D., Wilzewski, J., Paproth, C., Sebastian, I., Gurney, K. R., Liang, J., Roiger, A., and Butz, A.: Towards spaceborne monitoring of localized CO₂ emissions: an instrument concept and first performance assessment, *Atmospheric Measurement Techniques*, 13, 2887–2904, <https://doi.org/10.5194/amt-13-2887-2020>, 2020.
- 440 Van Geffen, J., Boersma, K., Van Roozendaal, M., Hendrick, F., Mahieu, E., De Smedt, I., Sneep, M., and Veeffkind, J.: Improved spectral fitting of nitrogen dioxide from OMI in the 405–465 nm window, *Atmospheric Measurement Techniques*, 8, 1685–1699, 2015.
- Varon, D. J., McKeever, J., Jervis, D., Maasackers, J. D., Pandey, S., Houweling, S., Aben, I., Scarpelli, T., and Jacob, D. J.: Satellite Discovery of Anomalously Large Methane Point Sources From Oil/Gas Production, *Geophysical Research Letters*, 46, 13 507–13 516, <https://doi.org/https://doi.org/10.1029/2019GL083798>, 2019.
- 445 Varon, D. J., Jervis, D., McKeever, J., Spence, I., Gains, D., and Jacob, D. J.: High-frequency monitoring of anomalous methane point sources with multispectral Sentinel-2 satellite observations, *Atmospheric Measurement Techniques*, 14, 2771–2785, <https://doi.org/10.5194/amt-14-2771-2021>, 2021.
- Veeffkind, J., Aben, I., McMullan, K., Förster, H., De Vries, J., Otter, G., Claas, J., Eskes, H., De Haan, J., Kleipool, Q., et al.: TROPOMI on the ESA Sentinel-5 Precursor: A GMES mission for global observations of the atmospheric composition for climate, air quality and
450 ozone layer applications, *Remote sensing of environment*, 120, 70–83, 2012.
- Wang, Y., Ciais, P., Broquet, G., Bréon, F.-M., Oda, T., Lespinas, F., Meijer, Y., Loescher, A., Janssens-Maenhout, G., Zheng, B., Xu, H., Tao, S., Gurney, K. R., Roest, G., Santaren, D., and Su, Y.: A global map of emission clumps for future monitoring of fossil fuel CO₂ emissions from space, *Earth System Science Data*, 11, 687–703, <https://doi.org/10.5194/essd-11-687-2019>, 2019.
- 455 Wang, Y., Broquet, G., Bréon, F.-M., Lespinas, F., Buchwitz, M., Reuter, M., Meijer, Y., Loescher, A., Janssens-Maenhout, G., Zheng, B., and Ciais, P.: PMIF v1.0: assessing the potential of satellite observations to constrain CO₂ emissions from large cities and point sources over the globe using synthetic data, *Geoscientific Model Development*, 13, 5813–5831, <https://doi.org/10.5194/gmd-13-5813-2020>, 2020.
- Wu, D., Lin, J. C., Oda, T., and Kort, E. A.: Space-based quantification of per capita CO₂ emissions from cities, *Environmental Research
460 Letters*, 15, 035 004, <https://doi.org/10.1088/1748-9326/ab68eb>, 2020.

- Yang, E. G., Kort, E. A., Wu, D., Lin, J. C., Oda, T., Ye, X., and Lauvaux, T.: Using Space-Based Observations and Lagrangian Modeling to Evaluate Urban Carbon Dioxide Emissions in the Middle East, *Journal of Geophysical Research: Atmospheres*, 125, <https://doi.org/10.1029/2019JD031922>, 2020.
- Ye, X., Lauvaux, T., Kort, E. A., Oda, T., Feng, S., Lin, J. C., Yang, E. G., and Wu, D.: Constraining Fossil Fuel CO₂ Emissions From Urban Area Using OCO-2 Observations of Total Column CO₂, *Journal of Geophysical Research: Atmospheres*, 125, <https://doi.org/10.1029/2019JD030528>, 2020.
- Zara, M., Boersma, K. F., Smedt, I. D., Richter, A., Peters, E., Van Geffen, J. H., Beirle, S., Wagner, T., Roozendaal, M. V., Marchenko, S., et al.: Improved slant column density retrieval of nitrogen dioxide and formaldehyde for OMI and GOME-2A from QA4ECV: intercomparison, uncertainty characterisation, and trends, *Atmospheric Measurement Techniques*, 11, 4033–4058, 2018.
- 465 Zheng, B., Chevallier, F., Ciais, P., Broquet, G., Wang, Y., Lian, J., and Zhao, Y.: Observing carbon dioxide emissions over China's cities and industrial areas with the Orbiting Carbon Observatory-2, *Atmospheric Chemistry and Physics*, 20, 8501–8510, <https://doi.org/10.5194/acp-20-8501-2020>, 2020.
- 470 Zheng, T., Nassar, R., and Baxter, M.: Estimating power plant {CO}₂ emission using {OCO}-2 {XCO}₂ and high resolution {WRF}-Chem simulations, *Environmental Research Letters*, 14, 85 001, <https://doi.org/10.1088/1748-9326/ab25ae>, 2019.