

# Use of Large-Eddy simulations to design an adaptive sampling strategy to assess cumulus cloud heterogeneities by Remotely Piloted Aircraft

Nicolas Maury<sup>1</sup>, Gregory C. Roberts<sup>1,2</sup>, Fleur Couvreur<sup>1</sup>, Titouan Verdu<sup>3,4</sup>, Pierre Narvor<sup>3</sup>, Najda Villefranque<sup>1</sup>, Simon Lacroix<sup>3</sup>, and Gautier Hattenberger<sup>4</sup>

<sup>1</sup>Centre National de Recherches Météorologiques, Université de Toulouse, Météo-France, CNRS, Toulouse, France

<sup>2</sup>Scripps Institution of Oceanography, University of California San Diego, La Jolla, USA

<sup>3</sup>Laboratoire d'Analyse et d'Architecture des Systèmes, Université de Toulouse, CNRS, Toulouse, France

<sup>4</sup>Ecole Nationale de l'Aviation Civile, Université de Toulouse, Toulouse, France

**Correspondence:** Nicolas Maury (nicolas.maury@meteo.fr) and Gregory C. Roberts (greg.roberts@meteo.fr)

## Abstract.

Trade wind cumulus clouds have a significant impact on the Earth's radiative balance, due to their ubiquitous presence and significant coverage in subtropical regions. Many numerical studies and field campaigns have focused on better understanding the thermodynamic, microphysical, and macroscopic properties of cumulus clouds with ground-based and satellite remote sensing as well as in-situ observations. Aircraft flights have provided a significant contribution, but their resolution remains limited by rectilinear transects and fragmented temporal data of individual clouds. To provide a higher spatial and temporal resolution, Remotely Piloted Aircraft (RPA) can now be employed for direct observations, using numerous technological advances, to map the microphysical cloud structure and to study entrainment mixing. In fact, the numerical representation of mixing processes between a cloud and the surrounding air has been a key issue in model parameterizations for decades. To better study these mixing processes as well as their impacts on cloud microphysical properties, the manuscript aims to improve exploration strategies that can be implemented by a fleet of RPAs.

Here, we use a Large-Eddy simulation (LES) of shallow maritime cumulus clouds to design adaptive sampling strategies. An implementation of the RPA flight simulator within high-frequency LES outputs (every 5 s) allows tracking individual clouds. A Rosette sampling strategy is used to explore clouds of different sizes, static in time and space. The adaptive sampling carried out by these explorations is optimized using one or two RPAs and with or without Gaussian Process Regression (GPR) mapping, by comparing the results obtained with those of a reference simulation, in particular the total liquid water content (LWC) and the LWC distribution in a horizontal cross section. Also, a sensitivity test of lengthscale for GPR mapping is performed. The results of exploring a static cloud are then extended to a dynamic case of a cloud evolving with time, to assess the application of this exploration strategy to study the evolution of cloud heterogeneities. While a single RPA coupled to GPR mapping remains insufficient to accurately reconstruct individual clouds, two RPAs with GPR mapping adequately characterize cloud heterogeneities

on ~~small-enough-scales-to-quantify~~ scales small enough to quantify the variability of important parameters such as  
25 total LWC.

## 1 Introduction

Cumulus clouds are ubiquitous over the subtropical ~~ocean-regions~~ oceans and cover more than 20 % of the ocean surface on average (?). They mainly interact with the shortwave radiation and therefore exert a net cooling effect on the Earth system. They also modulate the water and energy cycles of the atmosphere through vertical transfer  
30 from the sub-cloud layer to the cloud layer. Cumulus clouds are therefore a key element of the climate system (?). Their representation in Global Circulation Models (GCMs) has been shown to be responsible for large uncertainties in the climate response (?). Due to their grid scales between 10 to 100 kilometers, GCMs cannot explicitly represent shallow clouds, and use parameterizations to represent the impacts of such clouds on the climate radiation budget. One of the biggest uncertainties in understanding the impacts of cumulus clouds on the water and energy cycle is  
35 related to mixing processes (?). Mixing processes and entrainment impact cloud microphysical properties by creating heterogeneities of thermodynamical variables, diluting the liquid water content and reducing the cloud albedo. Studies on these processes often rely on the analysis of Large-Eddy Simulations (LES) that reproduce average properties of shallow convection (?, ?, ?, ?). However such models, with a horizontal resolution of a few tens of meters, still use parameterizations to represent cloud microphysics and small-scale turbulence to correctly reproduce sub-grid  
40 heterogeneities inside cumulus clouds such as sub-grid scale liquid water content (LWC) variability resulting from mixing processes at the cloud-air interface.

Observations of cumulus horizontal structures in the western Atlantic Ocean have been obtained from field campaigns such as BOMEX (Barbados Oceanographic and Meteorological EXperiment, ?), SCMS (?), CARRIBA (?), RICO (?), and cloud instrumentation continues to improve (e.g. the Fast-FSSP (?) and the HOLODEC (Holographic  
45 Detector for Clouds; ?)). However, the sampling strategy that relies on one or two transects through the same cloud only is not sufficient to reconstruct the cloud cross-section or follow its evolution. Observations from research aircraft such as ? or with sensors suspended under a helicopter (?, ?) have conducted multiple transects through an individual cloud with a lower frequency (a maximum of five transects). It has been shown that airplane transects without cloud mapping induce a bias in cloud sampling by oversampling the cloud core (?). In addition, this manuscript illustrates  
50 the importance of extending the transects with GPR mapping to capture the fractal nature of clouds.

~~These~~ The field campaigns serve as a basis for the construction of well-established case studies on which LES have been used to develop and evaluate shallow cloud parameterization (?, ?). ~~These~~ The LES reproduce the cloud field and allow the study of isolated clouds in detail, notably at high spatial and temporal resolution (?).

Over the past two decades, Remotely Piloted Aircrafts (RPAs) have emerged as a viable tool for observing  
55 aerosols and clouds (?, ?, ?). Their ability to operate as a fleet and follow complex trajectories based on adaptive sampling are an asset which allows a detailed comparison with high-resolution simulations. Previous studies have

developed tools to implement RPAs in LES to optimize trajectories within the cloud environment with the objective to maximize information gain while minimizing energy consumption (?). In this study, we focus on obtaining relevant meteorological data to observe cloud heterogeneities and mixing. A powerful tool in RPA cloud tracking is Gaussian Process Regression (GPR) mapping during flights to best guide the RPAs pattern and during post-processing to reconstruct cumulus field (?).

The objective of this study is to simulate RPA flights in LES output in order to optimize an adaptive sampling strategy to provide sufficient thermodynamic information within a ~~marine~~maritime cumulus cloud to quantify the mixing processes. This study is part of the NEPHELAE project (Network for studying Entrainment and microPHysics of cLOUDs using Adaptive Exploration), which aims to design and develop an automated fleet of RPAs to track a cloud from the beginning to the end of its life cycle. Section 2 presents the LES model, cloud identification methods, as well as the details of the RPA flight parameters. Section 3 highlights the results of the LES case study with a description of the cumulus field. We first classify individual simulated clouds into three categories based on their volume. We then select one cloud representative of each category and analyze the evolution of their macrophysical and thermodynamical properties where the adaptive exploration strategy is applied. Different parameters related to the number of RPAs and the use of a mapping are compared in a static case to reconstruct macrophysical and thermodynamic ~~field~~fields. The last section focuses on the application of the exploration in dynamics and the associated limitations.

This study highlights benefits of adaptive sampling and GPR mapping and illustrates the potential of RPAs to address long-standing challenges in observing clouds.

## 2 Methodology

### 2.1 Cloud simulation

#### 2.1.1 BOMEX: a case of marine convection

The numerical simulations focus on the period between 22-23 June, 1969 of phase 3 of the BOMEX campaign. These days are characterized by the presence of a strong inversion at the top of the boundary layer (?). This case has been chosen because it represents a typical undisturbed non-precipitating trade cumulus cloud field.

The BOMEX case was the subject of a model intercomparison exercise (?) with 10 ~~Large-Eddy-simulations~~LESs based on different models. The LES simulations all start with the same initial profiles of total mixing water ratio ( $q_t$ ) and liquid potential temperature ( $\theta_l$ ) from sea-level to boundary layer top measured by radiosondes. These LES models use prescribed constant surface latent and sensible heat fluxes ( $8 \times 10^3 \text{ K m s}^{-1}$ ,  $5.2 \times 10^{-5} \text{ K m s}^{-1}$ ) and prescribed large-scale and radiative forcing (?). These ~~LES~~LESs also correctly reproduced the observed vertical thermodynamical structure and turbulent fluxes for this period (?). The horizontal winds are initialized with  $U=$

$8.75 \text{ m s}^{-1}$  and  $V = 0 \text{ m s}^{-1}$  between sea level and 700 m  $\bar{\text{A}}\text{SL}$  (meters above sea level) and decrease linearly until  $U = -4.61 \text{ m s}^{-1}$  at 3000 m  $\bar{\text{A}}\text{SL}$ .

### 90 2.1.2 Meso-NH model and configuration

Meso-NH, a French non-hydrostatic mesoscale atmospheric model (?) is used in LES-mode to simulate the BOMEX case and the results are compared to the LES intercomparison of ? in Sect. 3. The classical configuration for LES (detailed in ?) is used here. Lateral boundary conditions are cyclic and a damping layer is applied at the top of the domain to prevent the reflection of gravity waves. The three-dimensional turbulence scheme from ? is based on  
95 a prognostic equation for the sub-grid turbulence kinetic energy with a Deardorff mixing length (?). Trade cumuli contain only liquid water and aerosol spectra ~~is~~are not available from BOMEX campaign to initialize a two-moment ~~microphysic~~microphysical scheme, therefore, only a warm bulk one-moment microphysic scheme is used. Long-wave radiative cooling, corresponding to the effect of clear-sky emissions, is prescribed for each atmospheric column as a temperature tendency. A saturation adjustment scheme is used so the grid is either entirely saturated (cloud) or  
100 entirely clear (no cloud).

The BOMEX case (?) was re-simulated for this study using Meso-NH LES with  $\Delta x = \Delta y = \Delta z = 25 \text{ m}$  - a higher horizontal resolution than used for the intercomparison study ( $\Delta x = \Delta y = 100 \text{ m}$ ,  $\Delta z = 40 \text{ m}$ , (?, ?)). The Meso-NH LES was conducted on two different horizontal domains: the same domain as the intercomparison study ( $6.4 \text{ km} \times 6.4 \text{ km} \times 4 \text{ km}$  with  $256 \times 256 \times 160$  ~~meshes~~grid points) named 6.4km\_MNH and a domain four-times larger  
105 ( $12.8 \text{ km} \times 12.8 \text{ km} \times 4 \text{ km}$  with  $512 \times 512 \times 160$  ~~meshes~~grid points) named 12.8km\_MNH. The radiative tendency was prescribed for each hour following the values presented in ?. The duration of these simulations is six hours where the first two hours of the simulation are discarded as spin-up. The 12.8km\_MNH run continued for 30 minutes longer during which 3D fields were stored every 5 seconds in order to have data high-resolution of cloud fields, named HFS for High Frequency Sampling.

### 110 2.1.3 LES validation

To validate the high resolution Meso-NH, the total cloud cover (TCC) is compared to results from the reference intercomparison study (?) as shown in Fig. 1. The TCC and liquid water path (LWP) stabilize after the spin-up (20 minutes delay in ~~Meso-NH~~Meso-NH; however, convection results in a similar intensity) to  $\sim 15 \%$  and  $\sim 5 \text{ g m}^{-2}$ , respectively. From the 2nd to the 6th hour, the TCC of both Meso-NH simulations remains within the standard  
115 deviation of the intercomparison study (?) with more fluctuations for the 6.4 km domain.

At the end of the simulation, TCC from 6.4km\_MNH is slightly higher (+ 5%) than reported in ?, while LWP remains nearly the same confirming the study of ? ~~of~~who argued that a better spatial resolution increases significantly the TCC.

The vertical profiles of turbulent flux of  $q_t$ ,  $\theta_1$ , wind, turbulent kinetic energy (TKE) and LWC are also near  
120 the mean and within the variability of the intercomparison ensemble presented in ? (not shown). The TCC in HFS

(shaded area in Fig. 1) varies ~~during the 30 minutes~~ between 11.9 % and 15.3 % during the 30 minutes, while the mean LWP in the domain is between 4.30 and 6.07 g m<sup>-2</sup>. In the following sections, the analysis focuses on the high temporal frequency outputs (HFS) in order to study the life cycle of individual clouds.

#### 2.1.4 Cloud identification method

125 One of the main objectives is to be able to characterize an entire cloud life cycle, including the formation phase when updrafts dominate and the dissipation phase when downdrafts dominate. In order to do that, we need to track individual clouds as a function of time while exploiting the high spatial and temporal resolution of the LES.

We first define clouds as coherent 3D structures made of at least 8 contiguous cells containing a LWC >  $1 \times 10^{-3}$  g kg<sup>-1</sup> and overlapping at least two vertical levels, i.e clouds thinner than 50 m or smaller than  $1.25 \times 10^{-4}$  km<sup>3</sup>  
130 are filtered out. In order to follow individual clouds, we apply a method of cloud identification (?) as a function of time, ~~t, for the first time~~. As shown in Fig. 2, the cloud identification method uses matrices of contiguity that isolate a cell and define it as belonging to cloud N. For each cloudy cell, the method identifies the neighboring cells connecting by their face, edge or corner. If one of them is already tagged as a cloudy cell, it will get the same tag (Fig. 2, t<sub>0</sub>). This method also uses contiguity in time, with the criterion that a face, an edge or a corner of a cloudy  
135 cell at t<sub>n</sub> touches a cloudy cell at t<sub>n-1</sub> (Fig. 2, t<sub>1</sub>). However, the advection of the cloud must be within a spatial limit between two time steps defined by the Courant-Friedrichs-Lewy condition ( $CFL = (U\Delta t/\Delta x) \leq 1$ ). If the cloud moves two or more lengths during one time step, the cloud identification method can lead to errors. In this study, the advection wind U is between 5 m s<sup>-1</sup> and 8 m s<sup>-1</sup>, the horizontal resolution is  $\Delta x = 25$  m, and outputs every 5 seconds, which yields a CFL between 1 and 1.6 and does not meet the CFL condition. To solve this issue, only  
140 cumuli with an overall dimension at least 3 times larger than a mesh (cloud width  $\geq 75$  m) are identified. When filtering small clouds out, the TCC and LWP do not change significantly (less than -0.05 % and  $-6 \times 10^{-3}$  g m<sup>3</sup>, respectively). A newly condensed cell can be added to the edge of the cloud, linked to a previous cloud cell (Fig. 2, t<sub>2</sub>), or identified as a new cloud (Fig. 2, t<sub>3</sub>). The strength of this cloud identification method is that it can identify individual clouds in the model domain quickly.

#### 145 2.2 Description of observational strategy

To improve upon decades of cloud observations, there is a need to follow a cloud throughout its life cycle and determine, with high spatial and temporal resolution, its microphysical and thermodynamical properties. The goal of this study is to derive the best strategy to observe the evolution of an individual cloud. The flight strategy ultimately depends on how long it takes to sample the cloud, which is largely determined by the RPA airspeed  
150 to transect the cloud and its turning radius to turn around and re-enter the cloud. In these simulations, the RPA samples every grid point along its transect. Simulations in this study were conducted using ~~a~~-an RPA airspeed of 15 m s<sup>-1</sup> and a turning radius of 100 m (?).

In order to optimize the sampling of clouds by the RPA, a Rosette flight pattern is performed in the LES to create a horizontal cross section of the cloud. The flight simulation is controlled by the Paparazzi autopilot module (?), which makes it possible to simulate the behaviour of ~~a~~an RPA within the LES simulation. The autopilot module and the LES are combined with the module CAMS (Cloud Adaptive Mapping System). The payload module which simulates a cloud instrument is embedded in the Paparazzi autopilot module to detect the presence of a cloud using a threshold of  $LWC \geq 10^{-2} \text{ g m}^{-3}$ . If the LWC threshold is exceeded, the RPA begins its Rosette pattern by conducting a straight line until it exits the cloud. The geometric center (red point in Fig. 3,  $t_0$ ) is calculated using a weighted sum of the LWC after each passage through a cloud. After exiting the cloud ( $LWC \leq 10^{-2} \text{ g m}^{-3}$ ), the RPA turns back toward the cloud center (Fig. 3,  $t_1$ ), and the transects are repeated in the form of a Rosette pattern until the cloud disappears.

### 3 Results

This section exploits the high temporal and spatial resolution provided by the LES to optimize the adaptive sampling for static and dynamic cases. First, an overview of the different clouds sampled in the LES is provided before selecting three clouds representative of the cloud population. Then, an exploration of the selected clouds is carried out with RPA flying off-line in the simulations -first in a static mode (i.e. without taking into account the displacement of the cloud) and then in a dynamic mode (i.e. including the wind advection and time evolution of the cloud).

#### 3.1 Description of a simulated trade cumulus field

During the HFS (12.8km\_MNH domain), an average of 300 clouds per output are identified with a minimum of 270 clouds around the 18th minute and a maximum of 350 clouds at the 25th minute (Fig. 4). Individual cloud volumes have been separated into four classes. Class 0 corresponds to a volume between  $10^{-4} \text{ km}^3$  and  $10^{-3} \text{ km}^3$ , class 1 between  $10^{-3} \text{ km}^3$  and  $10^{-2} \text{ km}^3$ , class 2 between  $10^{-2} \text{ km}^3$  and  $10^{-1} \text{ km}^3$ , and class 3 between  $10^{-1} \text{ km}^3$  and  $1 \text{ km}^3$  (Table 1). Figure 4 presents the evolution of the number of clouds detected at each time step (every 5 s). The volume distribution shows that one third of the clouds are in class 0, another third in class 1, and another third in class 2 and 3 with just under 10 clouds exceeding  $10^{-1} \text{ km}^3$  at any given time. The temporal evolution in Fig. 4 of the different classes shows a certain stability in the cloud field. Despite the small number of clouds classified in class 3, they have a disproportionate role in the transport of moisture and heat in the boundary layer since their mass flux is more than an order of magnitude larger than the clouds of class 0 and 1.

Some 2150 independent clouds have been identified of which 970 clouds complete a full life cycle within the 30-minute HFS. For clouds with the life cycle fully described, from formation to dissipation, statistics are calculated for thermodynamical and microphysical properties for each of the four volume classes, as shown in Table 1. For each class, the minimum (maximum) lifetime is calculated by averaging the smallest (largest) 10th percentile, and the minimum cloud base height (cloud top height) is calculated by averaging all the minimum cloud base heights

185 (cloud top heights) of each cloud during their lifetime. The cloud base of a newly-formed cloud is always at the level of the LCL, which is around 550 m.ASL. The larger the volume, the lower the average cloud base (which ranged between 550-680 m), and inversely, the smaller the volume, the higher the average cloud base (around 800 m). The cloud base also tends to increase when the cloud dissipates, which increases the average cloud base particularly for small clouds. The lifetime of small clouds is notably less as they dissipate quickly. The height of the cloud top also  
190 increases with the volume, as vertical extension is larger than the horizontal extension for cumulus clouds (?). The larger the volume, the greater the intensity of the downdrafts  $w_{\min}$  and updrafts  $w_{\max}$ . To calculate  $w_{\min}$  and  $w_{\max}$ , the highest downdraft and updraft are selected in each individual cloud during its lifetime and then averaged per class. The maximum of downdrafts and updrafts in this study are observed in the biggest clouds (class 3;  $-1.69 \text{ m s}^{-1}$  and  $2.77 \text{ m s}^{-1}$ ).

195 The average mass flux of the clouds ( $F_m$ ) is positive, but the standard deviation is larger than the mean in all four classes. Standard deviations of mass flux indicate that variability is related to formation and dissipation and width of the bin. A negative  $F_m$  represents the dissipation of the cloud and occurs more often for small clouds than large clouds. The difference in magnitude value of  $F_m$  between the size classes is significant, with an order of magnitude of difference in  $F_m$  for an order of magnitude change in cloud volume.

## 200 3.2 Individual cloud description

Inspired by the study of ? who use a LES with a similar resolution ( $\Delta x = \Delta y = \Delta z = 25 \text{ m}$ ) to study thermodynamical processes in individual clouds, with volumes of  $10^{-2} \text{ km}^3$  and  $10^{-1} \text{ km}^3$ , this study focuses on three independent clouds representative of volumes of  $10^{-2} \text{ km}^3$  (N1, class 1),  $2 \times 10^{-2} \text{ km}^3$  to  $3 \times 10^{-2} \text{ km}^3$  (N2, class 2) and  $10^{-1} \text{ km}^3$  (N3, class 3).

### 205 3.2.1 Macrophysical and microphysical properties

The evolution of the life cycle for the three clouds (N1, N2, N3) is followed for 12, 18 and 24 minutes, respectively. The growing phase, corresponding to an increase of volume, comprises 55 % to 65 % of their life cycle. Each of the clouds has a similar cloud-base height (at 550 m), and their cloud top increase follows a logarithmic growth rate, with a higher rate for large clouds. The maximum surface of the horizontal cross section at 150 m above cloud base  
210 occurs at  $t=14$  minutes for cloud N1 with  $S_{\max} = 0.045 \text{ km}^2$ ,  $t=10$  minutes for cloud N2 with  $S_{\max} = 0.28 \text{ km}^2$  and  $t=15$  minutes for cloud N3 with  $S_{\max} = 1.06 \text{ km}^2$ . In Fig. 5c, the maximum LWC for the three clouds is compared to their pseudo-adiabatic profile, computed by integrating the adiabatic vertical gradient,  $\beta$ , through the cloud depth (?). The difference between pseudo-adiabatic and maximum LWC for each cloud level indicates the degree of entrainment mixing that has occurred. The maximum LWC in the HFS follows the pseudo-adiabatic profile to  
215 approximately a third of the height of the clouds. The LWC then remains more or less constant until decreasing near the top suggesting higher entrainment rates in the upper part of the clouds.

### 3.2.2 Thermodynamical properties

Consistent with ? and ?, the clouds in the HFS present single or several pulses. As shown in Fig. 5 and Fig. 6, cloud N1 can be described by a simple pulse growth, whereas cloud N2 and N3 show 2 and 3 pulses, the first of which are the most important. The maximum updraft occurs at maximum volume and at the top of each pulse when the cloud has reached its mature phase, while maximum downdraft remains relatively constant (Fig. 6a). Similar features are seen for clouds N1, N2 and N3, where the magnitude of the updrafts and downdrafts are related to the size of the cloud (Table 1). Figure 6b represents the time series of the mean vertical mass flux for each cross section. High values of vertical mass flux are located near cloud base and within the cloud core (studied for each cloud cross section) and remain nearly constant up to half the height of the cloud while negative vertical mass fluxes are always located near the cloud edge (also studied for each cloud cross section) and cloud top in the dissipation phase (Fig. 6c).

This individual study of clouds has permitted the description of heterogeneities in the horizontal and vertical structure of cumulus clouds, in particular with respect to LWC. An observational strategy with sufficiently high sampling resolution is necessary to capture these heterogeneities and is now conducted numerically by embedding the exploration of RPAs in the HFS LES simulation.

### 3.3 Exploration by RPAs in LES

In this subsection, we simulate the capacity of RPAs to explore the horizontal variabilities of the thermodynamic variables in a cloud. First, we demonstrate the concept using cloud N2 in a static state by neglecting its horizontal advection and time evolution. We then repeat for the same cloud N2 but taking into account its evolution with time (dynamic case). Also, the clouds N1 and N3 are explored in static mode.

#### 3.3.1 Defining a pattern for a static cloud

For this subsection, the cloud is assumed to be static and the flight of the RPA is simulated by embedding the Meso-NH output in the Paparazzi autopilot module. The cloud shape and position as well as thermodynamical variables do not change during the exploration by the RPA. Horizontal wind is fixed to  $0 \text{ m s}^{-1}$ . To demonstrate the viability of the Rosette pattern, described in section 2.2, a cross section at 150 m above ~~N2-cloud~~ cloud N2 base extracted at  $t=10$  minutes is used (corresponding to the time when the cloud reaches its maximum volume)(Fig. 5). The location of the initial entrance in the cloud is random and is shown with a red arrow in Fig. 7a. In this case, the RPA conducts eleven transects at this altitude in the cloud.

After each transect, the sampled horizontal distribution of LWC is reconstructed for the cross section (Fig. 7b). As the Rosette pattern biases sampling of the geometric center, some regions in cloud N2 are oversampled while regions toward the cloud edge are not measured at all. Nonetheless, to assess the ability of the Rosette pattern to properly represent the horizontal cross section of the cloud, the probability density functions (PDFs) of reference LWC (Fig. 8a) and  $w$  (Fig. 8b) are compared with the PDFs of the reconstructed cloud cross section. The reference PDF of LWC



(black line in Fig. 8a) has a main peak (15 % of ~~cloud-grids~~cloudy grid cells) at  $0.37 \text{ g m}^{-3}$ , corresponding to the cloud  
 250 core, and 4 % of ~~cloud-grids~~cloudy grid cells have a LWC that approaches the adiabatic value of  $0.40 \text{ g m}^{-3}$ . The first  
 transect results in an overestimation of high LWC values, while cloud edges (low LWC values) are underestimated  
 as also shown in ?. As the number of transects increases, the LWC biases decrease and the cumulative reconstructed  
 PDF of the LWC approaches the reference distribution but high values are still overestimated.

For vertical winds, the PDF ~~distribution~~ (black line in Fig. 8b) represents a Gaussian distribution and 15 % of model  
 255 grids in the cloud cross section exhibit vertical wind ~~equal to  $0.8 \text{ m s}^{-1}$~~ between  $0.7$  to  $0.9 \text{ m s}^{-1}$ , corresponding to the  
 peak of Gaussian distribution in the cloud. The cross section area of downdrafts represents less than 10 % of total  
 vertical wind. High values of updrafts are also overestimated with the first transects; however, the PDF converges  
 to the reference PDF in less time than for LWC. In this study, the practice of only using the RPA observations to  
 map the cloud is called the transect method. To compensate for the above-mentioned biases of a single trajectory,  
 260 simple forms such as a circle or ellipse ~~provide~~ a simple method to estimate the distribution of LWC and updrafts  
 in the cross section. For example, an equivalent diameter (or the lengths of major and minor axes for an ellipse)  
 can be estimated by an average transect length to retrieve a surface area for a circle or an ellipse. To derive a total  
 LWC ( $\text{LWC}_{\text{tot}}$ ) of the cross section, the volume of the reconstructed cloud section is multiplied by the average LWC,  
 $\overline{\text{LWC}}$ . The transect method systematically underestimates the cloud volume section (area of the section multiplied  
 265 by the 25 m thickness of the grid cell), while the cloud volumes reconstructed by circle and ellipse methods are  
 more than twice the actual volume of the reference cross section as shown in Fig. 9a. Clearly, none of these relatively  
 simple methods are able to accurately reconstruct the cloud cross section (Fig. 9), particularly related to the fractal  
 character of the borders of cloud cumulus. To address this deficiency in accurately reconstructing the cloud-cross  
 section using simple methods, we introduce a novel method that uses Gaussian Process Regression (GPR). Below,  
 270 only transect method (RPA observations) will be compared with GPR.

### 3.3.2 Gaussian process regression mapping

Gaussian process regression extends the spatial footprint of an observation by weighting its values with a Gaussian  
 profile. It needs the definition of four length scales ( $\lambda_{t,z,y,x}$ ), representing spatial (z,y,x) and temporal (t) scales.  
 For the static case,  $\lambda_t = \infty$  means that an earlier observation is considered to have the same weight as the last  
 275 measurements (temporal variation is not taken into account).

To demonstrate the impact of lengthscales on GPR, sensitivity tests are carried out for cloud N2 using three  
 different lengthscales, corresponding to two, three and four times the resolution of the simulation (50 m, 75 m, 100  
 m). The differences of the reconstructed map of LWC for the different lengthscales is shown in Fig. 10. For a horizontal  
 lengthscale of 50 m,  $\overline{\text{LWC}}$  is underestimated in unsampled regions, consistent with a lengthscale that is too short  
 280 ( $\overline{\text{LWC}}_{\text{reconstructed}} = 0.20 \text{ g m}^{-3}$  compared to  $\overline{\text{LWC}}_{\text{reference}} = 0.24 \text{ g m}^{-3}$ ). To assess if the cross section of the cloud is  
 correctly defined in its entirety, the root-mean-square error (RMSE) is also calculated and is equal to  $8.92 \text{ g m}^{-3}$ . For  
 a 75 m lengthscale, the reconstructed cross section represents the reference cloud with a  $\overline{\text{LWC}}_{\text{reconstructed}} = 0.22 \text{ g m}^{-3}$

and a RMSE of  $5.71 \text{ g m}^{-3}$ . For the largest lengthscale, 100 m, the cross section of LWC extends beyond the edges of the reference cloud, also as expected for a lengthscale that is too large ( $\overline{\text{LWC}}_{\text{reconstructed}} = 0.35 \text{ g m}^{-3}$ ). The RMSE for a 100 m lengthscale increases significantly ( $14.89 \text{ g m}^{-3}$ ). For the following analysis, the GPR mapping uses a 75 m lengthscale.

### 3.3.3 Criteria for optimizing the exploration

In this section, different methods are applied to better characterize the heterogeneities of the thermodynamic variables and the total LWC. The exploration with a Rosette pattern is repeated ten times in the same cloud at the same altitude with different entrances. In each of these explorations, the reconstructed  $\text{LWC}_{\text{tot}}$  and  $\overline{\text{LWC}}$  are compared to the reference cloud, every 60 seconds for 12 minutes. The reference  $\text{LWC}_{\text{tot}}$  and  $\overline{\text{LWC}}$  have values of  $1.8 \times 10^3 \text{ g}$  and  $0.24 \text{ g m}^{-3}$ , respectively. Four sampling strategies are compared: single RPA exploration just using observations along the trajectory (1-RPA) and with GPR mapping (1-RPA + GPR). Similar notation is used for the 2-RPA exploration.

The  $\text{LWC}_{\text{tot}}$  reconstructed for the four sampling strategies is shown in Fig. 11 with the standard deviation dispersion among the ten flights shown as shading. For the first minute of exploration, the four methods underestimate the  $\text{LWC}_{\text{tot}}$ ; however, after the second minute ( $\approx 2\text{-}3$  transects), the 1-RPA and 2-RPA exploration with GPR method calculates a  $\text{LWC}_{\text{tot}}$  close to the reference  $\text{LWC}_{\text{tot}}$  as while with the two other methods without GPR, the  $\text{LWC}_{\text{tot}}$  stays significantly lower than the reference. After the 3rd minute, the GPR method yields a stable  $\overline{\text{LWC}}$ , within the reference  $\overline{\text{LWC}} \pm 10\%$ , while 1-RPA and 2-RPA explorations without GPR never attain the reference  $\text{LWC}_{\text{tot}}$ . In addition, the standard deviation variability of  $\text{LWC}_{\text{tot}}$  is a factor of three less when using GPR.

It is possible to quantify the total LWC reliably around 180 s for exploration with 2 RPAs + GPR mapping and 300 s for a single RPA + GPR mapping. Using ~~?-formula-equation (5) of ? allows~~ relating the time needed for homogenization based on a turbulence kinetic energy dissipation rate of  ~~$0.89 \times 10^3 \text{ m}^2 \text{ s}^{-3}$~~   $0.89 \times 10^{-3} \text{ m}^2 \text{ s}^{-3}$  at level 700 m (from the LES), these exploration times allow to characterize LWC heterogeneities caused by mixing having a characteristic length of 155 m with a single RPA and 72 m with two RPAs. The simultaneous use of two RPAs ~~allows-allow~~ us to better characterize the thermodynamical changes in a cloud section in the ~~hypothesis-case~~ of a dynamic cloud.

Another stated objective of this study is to optimize the sampling strategy in order to best describe the thermodynamical heterogeneities in the cloud. To quantify this, the relative error is calculated as a sum of difference between the reconstructed PDF and the reference PDF of LWC for each of the 20 bins of the distribution as:

$$\text{relative error} = \frac{1}{n_{\text{bin}}} \sum_i^{\text{n}_{\text{bin}}} \frac{|\text{PDF}_{\text{ref},i} - \text{PDF}_{\text{reconstructed},i}|}{\text{PDF}_{\text{ref},i}} \quad (1)$$

where  $n_{\text{bin}}$  represents the number of bins,  $\text{PDF}_{\text{ref}}$  represents the reference PDF distribution of a variable noted  $i$  and  $\text{PDF}_{\text{reconstructed}}$  represents the reconstructed PDF distribution with observations for the same variable  $i$ . Note

315 that  $\text{PDF}_{\text{reconstructed}}$  is a cumulative PDF which takes into account previous transects.

The relative errors for the three methods are shown in Fig. 12. For the ~~N2-cloud~~ cloud N2, the time required for the single RPA without GPR to have a relative error below 0.5 is approximately 350 seconds. With two RPAs without GPR, the time required to have a relative error below 0.5 is reduced to 190 s. Figure 12 shows that the  
320 GPR provide a significant time saving, since ~~a-an~~ RPA associated with the GPR mapping takes only 120 seconds to have a relative error on the PDF below 0.5 and that two RPA operating simultaneously with a GPR mapping takes only 80 s.

The time needed to reach different thresholds relative errors of 10 %, 30 %, 50 % for different variables (LWC, vertical wind and, potential temperature  $\theta$ ) are reported in Table 2, highlighting a significantly improved mapping  
325 of the cross section by using the GPR method.

As described by ?, the growth, maturity and dissipation phases of a cloud life cycle have a time-scale of minutes. Consequently, sampling of cloud cross section must also be completed within time scales of a few minutes. These results show that cloud cross section are sufficiently well represented when using GPR methods.

### 3.3.4 ~~Application for two~~ Exploring clouds of different ~~sizes~~ sizes

330 In this section, a generalization of the Rosette pattern with the GPR method is applied to static cloud N1 and N3 at the time they reached their maximum cross sectional area at 150 m above cloud base. Figure 13 shows the exploration with the Rosette trajectories using GPR mapping.

Length scales between 25 m and 400 m were used to find an optimal length scale for Clouds N1, N2, and N3. The sensitivity test was first applied on the Cloud N2 (equivalent diameter=597 m), and the most efficient length scale was found to be 75 m. The same tests were performed for the other two clouds (Cloud N1, equivalent diameter=240 m); Cloud N3, equivalent diameter=1161 m), which resulted in similar length scales, averaging 75 +/- 5 m for the three cases. The optimum length scale is independent of the cloud size (e.g., N1, N2, N3) suggesting the length scale defined for GPR is related to the length scales of the strongest gradient of the parameter being explored (i.e., LWC in this case). The strongest gradient in LWC occurs in the cloud shell, which is generally two to three grid sizes (i.e.,  
335 50 to 75 m) of the LES simulation. Length scales that are too small (i.e., 25 m) create ‘gaps’ in the exploration, particularly for large clouds; while length scales that are too large blend the cloud shell and cloud core, which is relatively more important for small clouds.

When the dimension of the cloud is smaller than the turning radius (cloud N1), the exploration is pattern-limited in that the RPA cannot turn around and re-enter the cloud if the cloud itself is smaller than the RPA’s turning  
345 radius. The relative error remains higher than 0.3 for the duration of the simulation. When the cloud radius is much larger than the turning radius there is simply more surface area to sample which prolongs the exploration. For example, the relative error for cloud N3 only approaches 0.2 by the end of the exploration. Finally, Fig.13 shows that when using GPR for a middle cloud (cloud N2), the relative error is below 0.2 midway through the exploration.

The results demonstrate that the Rosette trajectory associated with a GPR mapping in a static environment is  
 350 suitable for sampling thermodynamic and microphysical variables such as LWC or  $\theta$ , and  $w$ . We now assess the  
 ability to measure thermodynamic and microphysical variables for a case where the cloud evolves with time and in  
 space (i.e., a dynamic case).

### 3.3.5 GPR reconstruction of a cloud evolving with time

In an evolving cloud, the RPA must constantly adjust its trajectory taking into account the advection and spatial  
 355 evolution of the cloud. In this subsection, an adaptive exploration follows the cloud in the cloud reference frame,  
which is redefined at each time step by accounting for the advective wind. To demonstrate the challenges in extending  
 the analysis of a static environment (Section 3.3.1 to 3.3.4.) to a dynamic one, the adaptive exploration is applied  
 here to cloud N2. For this case, the Rosette pattern (section 2.2) is also applied at 150 m above cloud base as for  
 the static exploration. Cloud N2 vertical extent reaches 150 m above cloud base four minutes after its formation,  
 360 and we start the exploration of cloud N2 at this time. The sampling strategy follows the Rosette model in the  
 cloud reference frame, where the calculated center of the cloud moves relative to the advective wind. Observations  
 of the cloud continue for 12 minutes (Fig. 14), corresponding to several transects in the cloud, until the moment  
 of its dissipation (at the exploration level). The total horizontal distance covered is more than 5 km during this  
 period. Figure 14 shows four periods of the dynamic exploration corresponding to the first, fourth, seventh and  
 365 eighth transects through the cloud N2. The first transect occurs during the growth phase of the cloud and does not  
 traverse the region of maximum LWC, followed by the other transects in the maturity and dissipation phase of the  
 cloud.

Figure 14b represents the RPA transects in a fixed frame where advection has been removed (in a Lagrangian  
 reference frame). The cloud transects are 500-600 m long, and map the evolution of the cloud's boundary.

370 Associated with these transects in the time-evolving ~~N2 cloud~~ cloud N2, the LWC measurements are shown in Fig.  
 15a. As expected, there is a clear underestimation of high LWC values when comparing LWC PDFs (Fig. 15b,1).  
 Between the fourth and seventh transects (300 to 550 s), the reference cloud is in a relatively stable mature phase.  
 Once the center of the cloud is established, the exploration is efficient enough to reconstruct a PDF resembling that  
 of the reference case with relative errors between 0.3 and 0.4. However, during the dissipation phase, the evolution  
 375 of the cloud cross section is faster compared to the relatively stable mature phase and is not well represented by the  
 PDF. These explorations are repeated several times and the PDF descriptions are all more efficient in the mature  
 phase (relative error around 0.3 to 0.4) than in the developing and dissipating phases. While GPR certainly improves  
 the ability to reconstruct a cloud cross section, these results clearly show that to adequately observe the dissipation  
 phase, the cross section must be reconstructed in less time. Averaging the multiple explorations (individual lines in  
 380 Figure 15b) yields similar results as a dynamic exploration with multiple, uncoordinated RPA. These results show  
that the 'noise' associated with the reconstructed probability function of LWC is greater during phases with more  
rapid evolution – therefore, to reduce the uncertainty, one needs to add RPA. In addition, Figure 15b; 50 and 600

seconds show that the RPA does not capture the higher LWC values associated with the core of the cloud when the cloud element is small, which is a result of a less efficient choice of exploration strategy.

## 385 4 Conclusions

The aim of this study is to determine an observational strategy for reconstructing thermodynamic properties of a cross section of a cumulus cloud without surface precipitation within a high-resolution Large-Eddy Simulation (LES). We reproduce a high resolution cumulus cloud field with the Méso-NH model in LES mode (with a 25 meter spatial resolution), where the simulations are based on observations during the BOMEX field campaign. The high-resolution  
390 simulation serves as the basis for this study and compares well to an ~~inter-comparison~~ intercomparison LES study reported in ?. By applying a novel cloud identification method on ~~high-frequently~~ high-frequency 3D outputs, we isolated three clouds with different volumes ( $10^{-4} \text{ km}^3$  to  $10^{-1} \text{ km}^3$ ), representative of the cumulus cloud population with varying lifetimes between 12 and 18 minutes. The goal of the sampling with a remotely piloted aircraft (RPA) is to reproduce a cloud cross section of liquid water content (LWC) and updraft velocity within a few minutes in  
395 order to follow the evolution of a cloud through its growth, maturity, and dissipation phases.

An autonomous RPA using a Paparazzi autopilot module is embedded into the LES to conduct an exploration of a cloud level using a Rosette pattern. In a static environment (a cloud that does not evolve with time), the Rosette pattern is applied to the cloud at the time and the level where the surface area of its horizontal cross-section is maximum. The Rosette pattern is chosen for the adaptive trajectory since at each exit from the cloud, the RPA  
400 automatically conducts a half turn to re-enter the cloud and conducts a subsequent transect through the geometric center of the cloud. The sampling of the cloud continues autonomously using a threshold LWC of  $10^{-2} \text{ g m}^{-3}$  to determine if the RPA has entered or exited the cloud. The geometric center is calculated using a weighted sum of the LWC from the previous transects. The simulated observations serve to reconstruct different Probability Density Function (PDF) distributions of LWC, vertical winds, volume and total LWC.

405 Simple methods to derive a cross section using individual observations or assuming circular or elliptical forms of a cloud do not reproduce the LWC and its horizontal variability. Using only the observations from one or two RPAs underestimates the amount and variability of LWC in the cloud cross-section. Assuming a circle or an ellipse yields a factor of two overestimation of total LWC in the cross-section. We therefore explore another technique to expand the observational footprint using Gaussian Process Regression (GPR). GPR mapping extends individual measurements  
410 by applying a confidence level to the surrounding area and time related to a given length scale. The results show that GPR mapping significantly improves the reconstruction of the cloud cross section. A sensitivity test of the lengthscale used for GPR mapping indicates that the characteristic scale of 75 m is the best for reconstructing the horizontal LWC in a cloud. In fact, after three transects through the cloud, corresponding to a time of  $\approx 200 \text{ s}$ , the GPR mapping adequately reproduces total LWC (within a relative error of 10 %), as well as the PDF variability  
415 of the LWC (within 30 % relative error). The addition of a second RPA simultaneously with GPR mapping further

improves the time of good restitution of the total LWC field and its distribution by reducing the time needed to obtain a correct LWC total values to 80 seconds.

To extend results of a static exploration to a realistic environment, the Rosette pattern was applied to a cloud evolving in time and space in a dynamic environment. The GPR mapping method allows [us](#) to sample the thermodynamical distribution sufficiently well for a cloud during its maturity stage, which is the most stable phase of a cloud life cycle. However, during the growing and dissipating phases, a single RPA coupled with GPR is still insufficient to reproduce the temporal variability of the cloud life-cycle.

In order to improve the observational capacity of airborne measurements, various methods are currently being explored, including the use of a camera ~~and increasing the number of RPAs to reduce the time for reconstructing a cloud cross section system or radar to improve the cloud exploration, particularly for conditions when the cloud boundaries are broken or not well defined (e.g., a dissipating cloud).~~

To optimize the dynamic exploration of a cloud, at least two RPAs are necessary. To improve our observations of the cloud life cycle, an improved coordination between the RPAs is also necessary to avoid risk of collision and also to couple with different optimized adaptive trajectories.

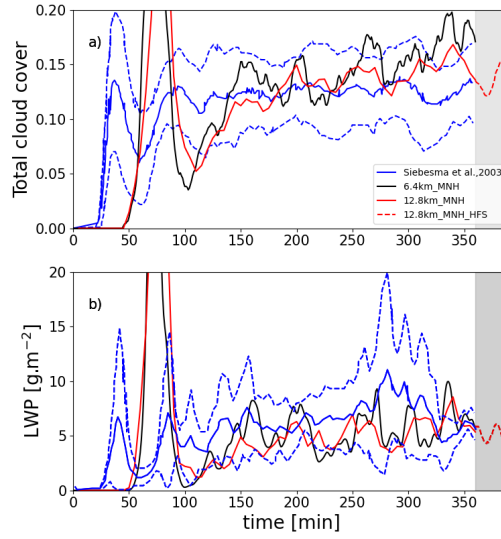
*Data availability.* Data for the static case are currently being archived and will be accessible online. Due to size of the data for the dynamic simulation (1.5 TB), please contact the corresponding authors.

*Author contributions.* N.M conducted the analysis of the data and wrote the paper. G.C supervised the project, verified the analytical methods and edited the paper. F.C carried out the simulation, verified the analytical methods and edited the paper. N.V co-developed cloud identification method. T.V, G.H have designed RPA patterns for the Paparazzi autopilot. P.N, S.L conceived and developed the Cloud Adaptive Mapping System (CAMS) module.

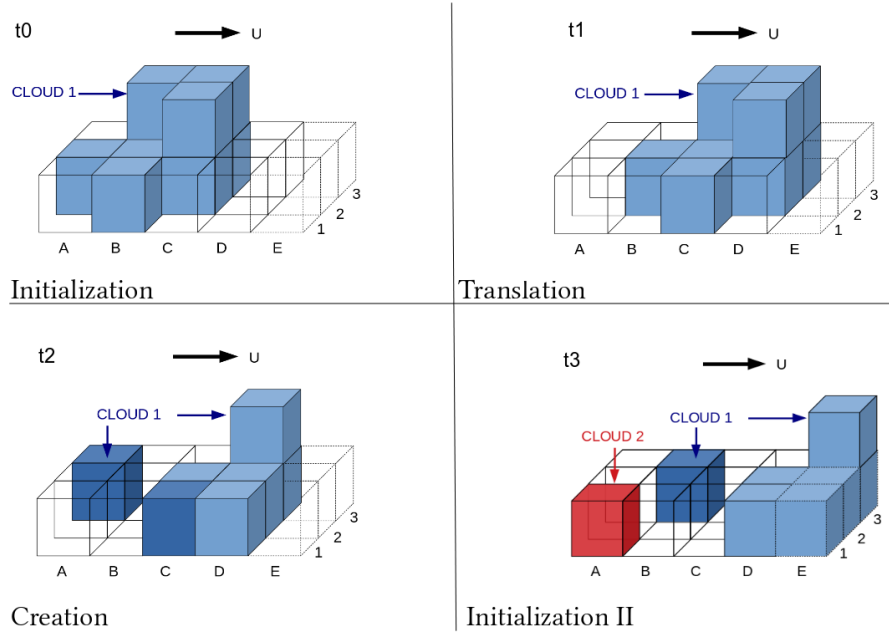
*Competing interests.* The authors declare that they have no conflict of interest.

*Acknowledgements.* This research was supported by Agence Nationale de la Recherche (Project-ANR-17-CE01-0003), Aerospace Valley and Météo-France. The simulations were performed using the supercomputer Beaufix of Météo-France in Toulouse, France. Cloud identification method co-developed by N.V is available on <https://gitlab.com/tropics/objects/>.

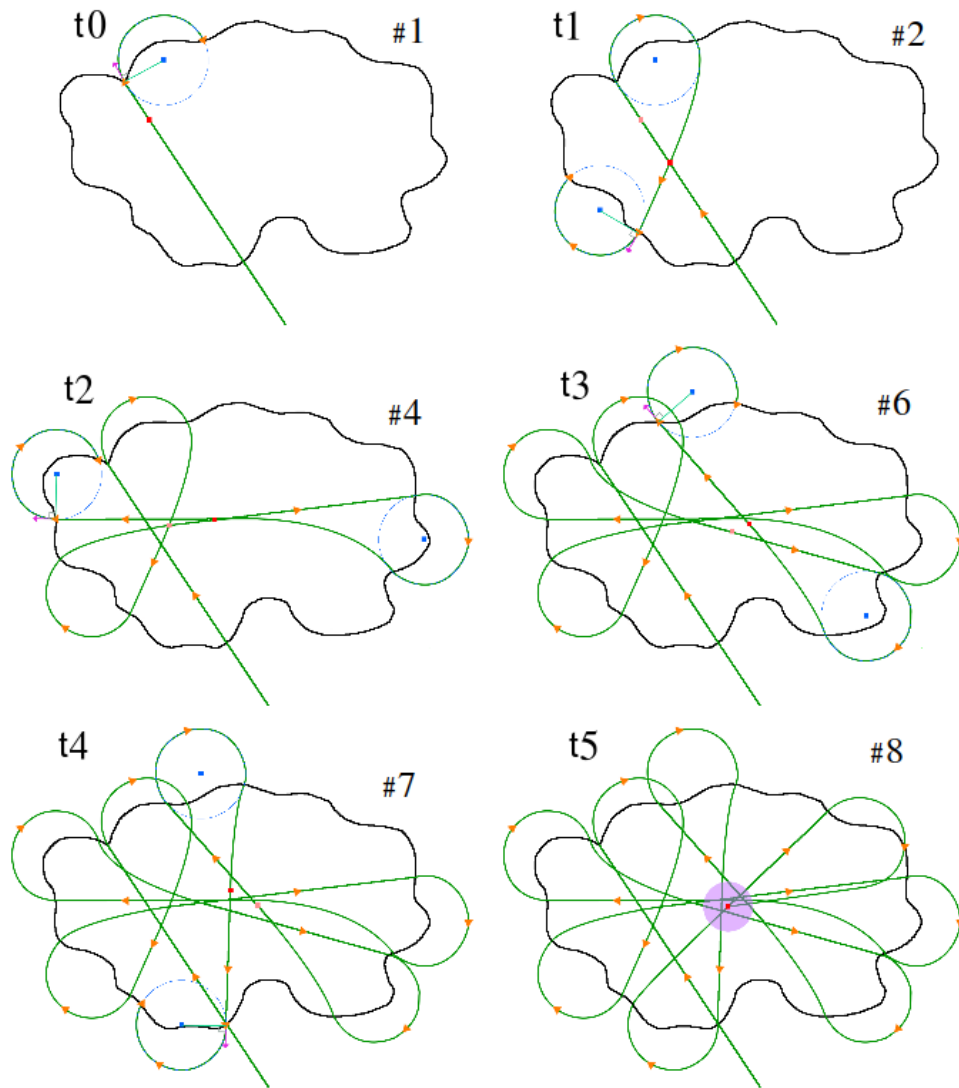
The CAMS module is available on <https://redmine.laas.fr/projects/nephelae-devel/wiki>. The Paparazzi module on [https://wiki.Paparazziuav.org/wiki/Main\\_Page](https://wiki.Paparazziuav.org/wiki/Main_Page).



**Figure 1.** Temporal evolution of a) total cloud cover and b) liquid water path from the ? intercomparison (blue lines, solid line for the mean and dotted line for the  $\pm$  standard deviation), black line for 6.4km\_MNH domain and red line for 12.8km\_MNH domain. Grey shaded area corresponds to Meso-NH high frequency outputs (HFS).

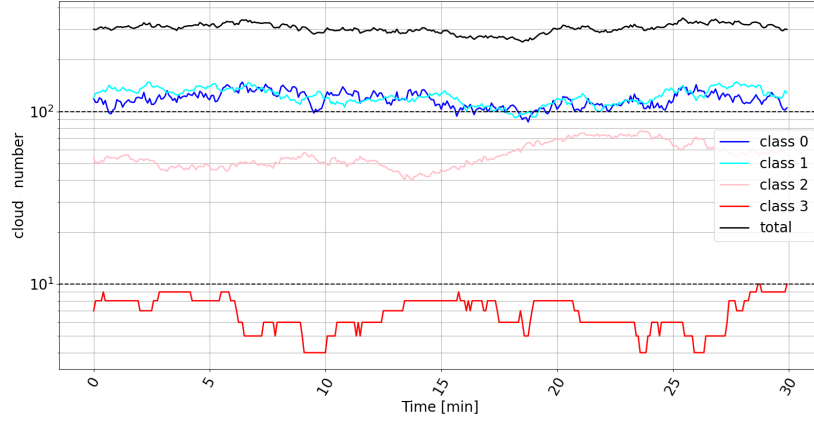


**Figure 2.** Scheme of temporal cloud identification method for following a cloud in a dynamic environment

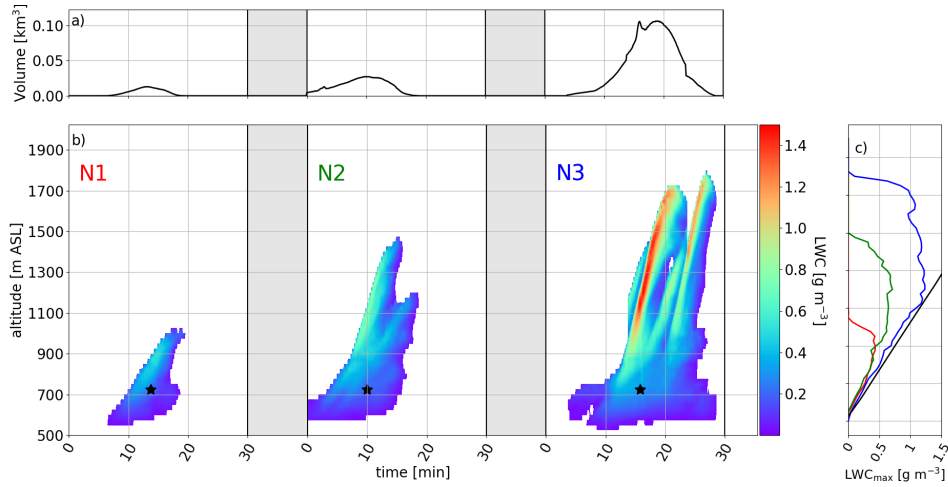


**Figure 3.** Rosette pattern for different times (and the number of transect associated) of exploration, adapted from ?. Green lines represent the RPA trajectories, red points the calculated geometric center at different times of exploration, purple point the last geometric center.

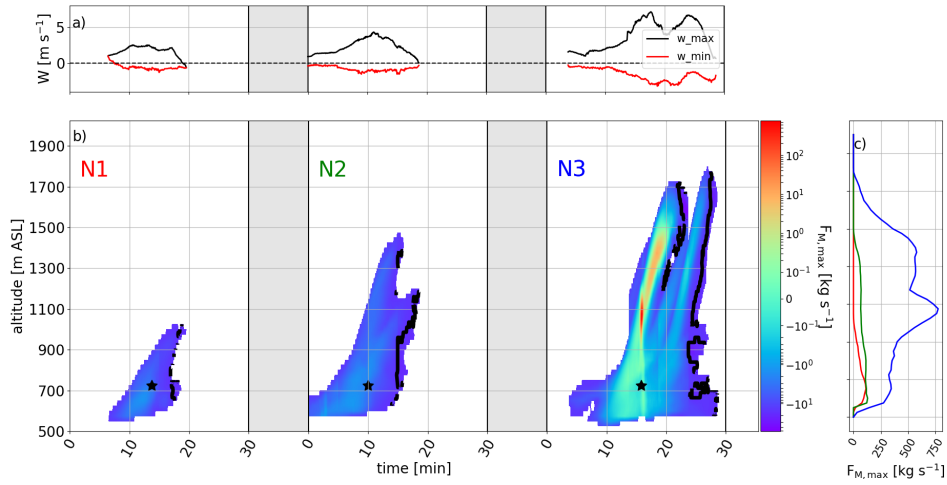




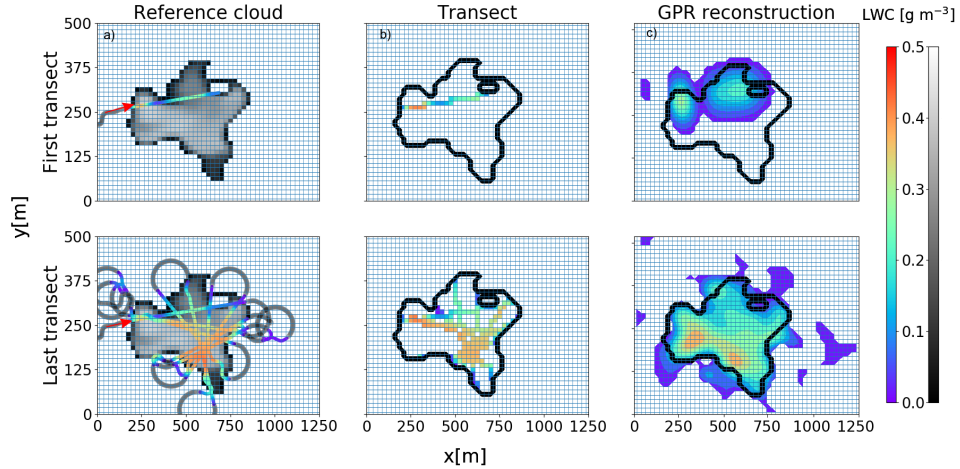
**Figure 4.** Temporal evolution of the number of clouds at each model output classified by their different volumes from Table 1.



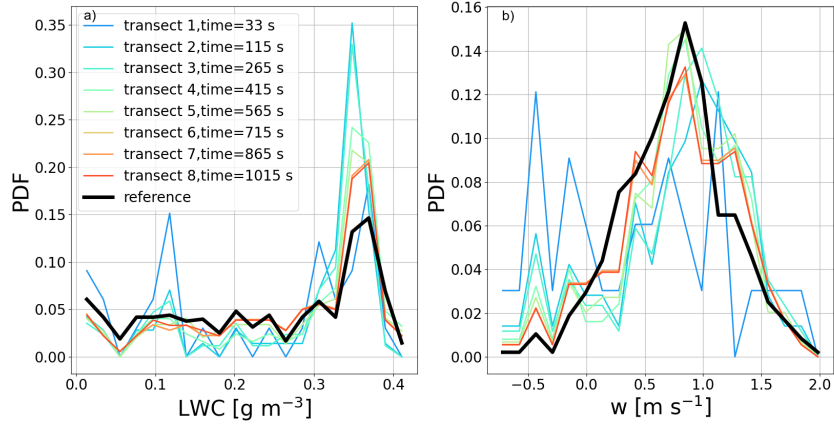
**Figure 5.** Life cycle of three clouds N1,N2,N3 for a) their volume and b) their LWC. The black star represents altitude and time for static cloud exploration. c) shows the comparison between the maximum LWC for each vertical level during each life cloud cycle and the limit of pseudo-adiabatic LWC (black line).



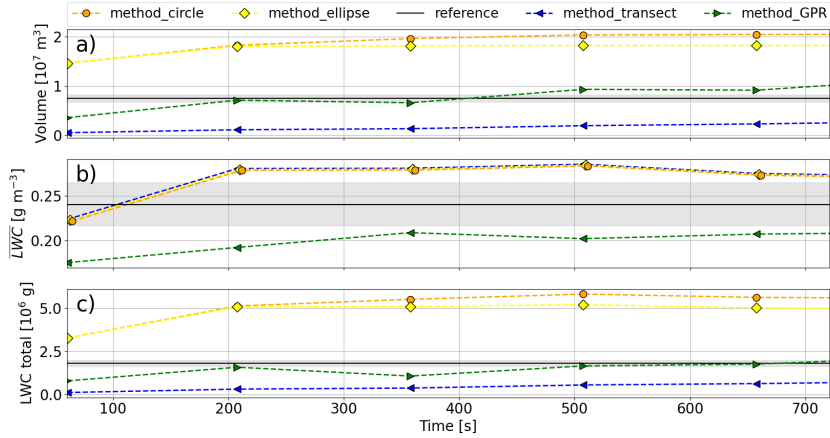
**Figure 6.** Life cycle of three clouds N1,N2,N3 for a) their minimum and maximum vertical wind, b) their mass flux and c) vertical profile of mass flux for each cloud. The black line in b) corresponds to negative vertical flux. The black star represents altitude and time for static cloud exploration.



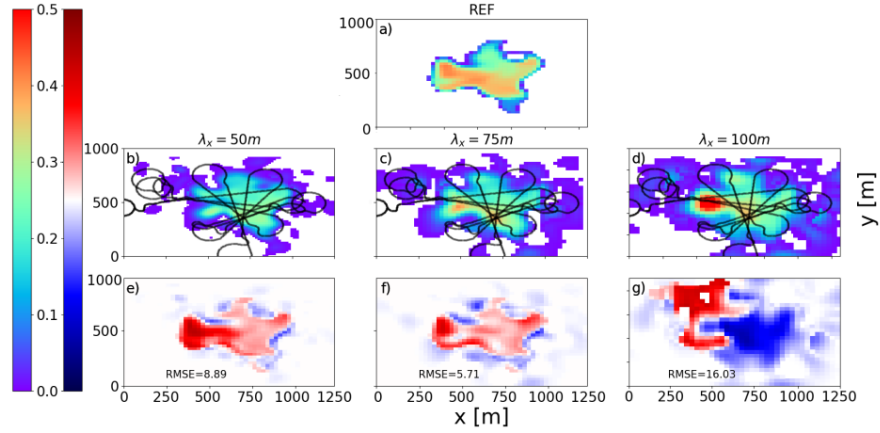
**Figure 7.** a) Cross section of simulated cloud N2 at 150 m above cloud base in gray with transect of the RPA where the color represents the LWC measured. b) Reconstructed LWC in the cross section based on RPA transects. c) Reconstructed LWC in the cross section with GPR mapping with  $\lambda_x=75$  m. The first row corresponds to the end of the first transect, the second row corresponds to all transects at the end of the exploration. The red arrow represents the first entrance in cloud N2 starting the Rosette pattern (section 2.2)



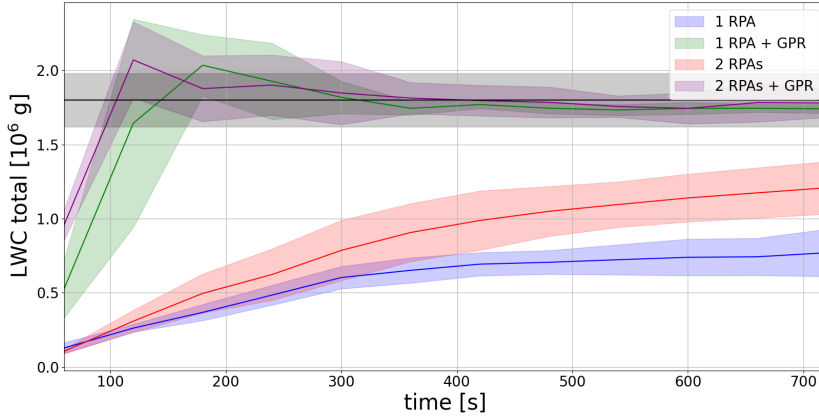
**Figure 8.** Reconstructed probability density function (PDF) of a) LWC with time (color) compared to the reference of cloud N2 (black) at ~~alt=a~~ a height of 700 m ASL. b) Same for vertical wind.



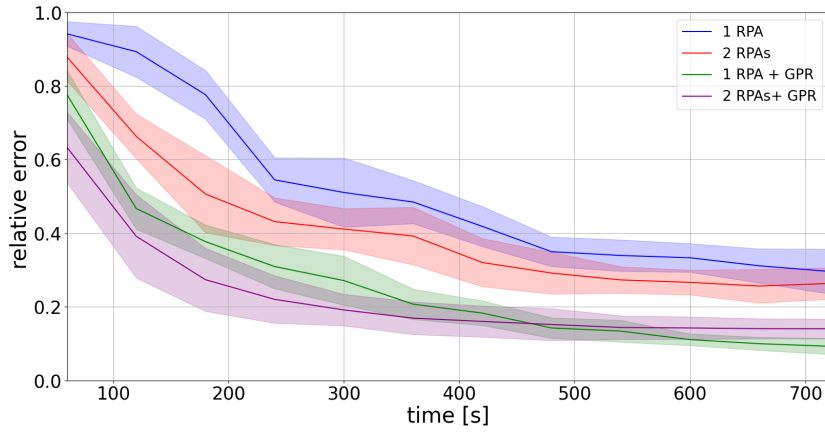
**Figure 9.** a) Reconstructed cloud volume with circle method (orange line), ellipse method (yellow line), transect method (blue line) and GPR method (green line) compared to the reference volume (black line) for cloud N2 in static state at 700 m for one exploration b) Blue line corresponds to  $\overline{LWC}$  calculated by transect method, green line by GPR method and dotted black line the reference  $\overline{LWC}$  c) Same for integration of LWC in the section volume.



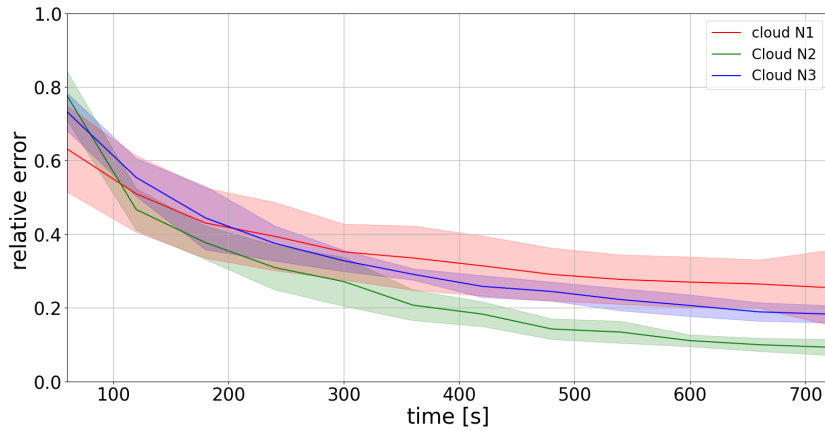
**Figure 10.** a) The first row corresponds to a cross section of simulated cloud N2 at 150 m above the cloud base in color shade. The second row corresponds to a cross section of LWC reconstructed for cloud N2 with GPR for b)  $\lambda_x = 50$  m, c)  $\lambda_x = 75$  m, d)  $\lambda_x = 100$  m. The third row corresponds to the difference between reference cross section and reconstructed cross section by GPR for the three lengthscales, RMSE is also shown.



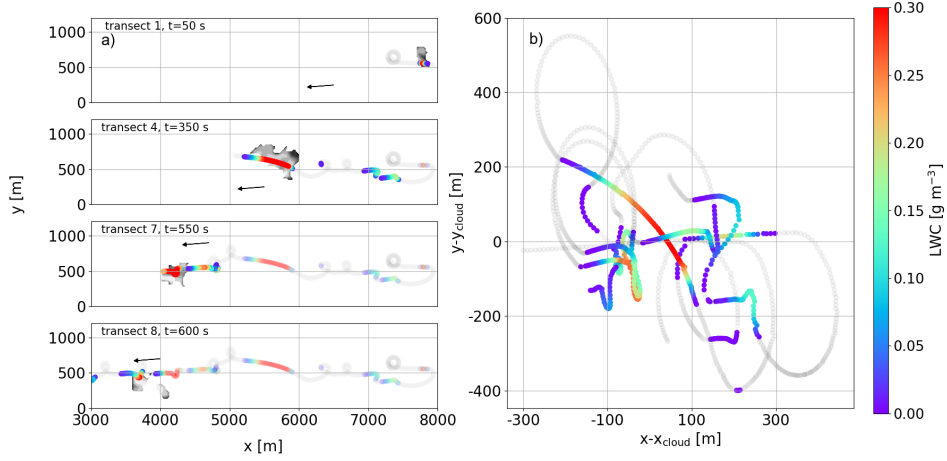
**Figure 11.** Temporal evolution of reconstructed LWC total with the transect method with one RPA (blue line) or two RPAs (red line) and with the GPR method with  $\lambda_x = 75$  m for a single RPA (green line) and two RPAs (purple line). Colored shading areas represent  $LWC_{tot} \pm$  standard deviation for the ten explorations for each 60 s. The black line corresponds to reference  $LWC_{tot}$  in the cloud N2 section in static state at 700 m and shaded grey area corresponds to  $\pm 10\%$  of  $LWC_{tot}$ .



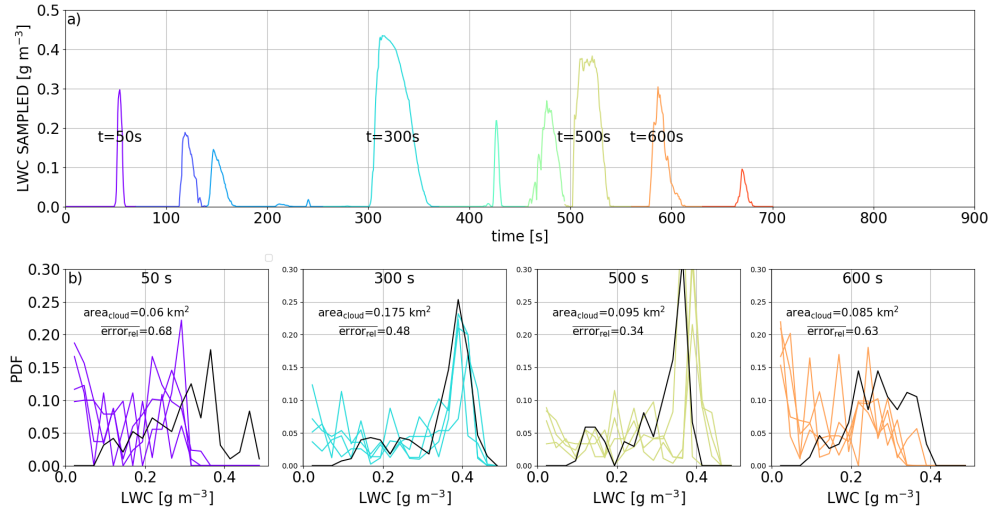
**Figure 12.** Temporal evolution of relative error in PDF of LWC distribution for single RPA with transect method (blue line) and GPR mapping (green line), two RPAs with transect method (red line) and GPR mapping (purple line) during the exploration of cloud N2 in static state.



**Figure 13.** Temporal evolution of relative error of LWC distribution for cloud N1 (red line), cloud N2 (green line) and cloud N3 (blue line) in static state. Shaded area corresponds to  $\pm$  standard deviation for 5 explorations.



**Figure 14.** a) Trajectories of exploration by following cloud N2 for four different transects. The colors represent the measured LWC and grey surface corresponds to cross section of reference cloud N2 for the different times. The shading colors correspond to the past transects. The black arrow represents the direction of the advective wind. b) Measured LWC in cloud frame during the exploration. The colored lines correspond to the values of measured LWC exceeding  $10^{-2} \text{ g m}^{-3}$  and the grey lines, the measured LWC below this threshold.



**Figure 15.** a) Temporal evolution of LWC measured by RPA for different transects (colors). b) Reconstructed probability function of LWC in color and by the reference in black for four transects of exploration (transect 1,4,7,8).

**Table 1.** Min, max, mean and standard deviation of macroscopic and dynamic characteristics of the 970 clouds that complete a full life cycle during HFS.

class	volume [km <sup>-3</sup> ]	lifetime [min] min/max	cloud <sub>base</sub> [m] min/max	cloud <sub>top</sub> [m] min/max	w <sub>min</sub> [m s <sup>-1</sup> ] mean $\pm$ $\sigma$	w <sub>max</sub> [m s <sup>-1</sup> ] mean $\pm$ $\sigma$	F <sub>m</sub> [kg s <sup>-1</sup> m <sup>-2</sup> ] mean $\pm$ $\sigma$	n
0	10 <sup>-4</sup> -10 <sup>-3</sup>	1.16 /9.16	812/850	848/877	-0.3 $\pm$ 0.35	0.32 $\pm$ 0.41	0.03 $\pm$ 6.01	501
1	10 <sup>-3</sup> -10 <sup>-2</sup>	3.55/ 17.75	816/943	935/1035	-0.61 $\pm$ 0.35	0.66 $\pm$ 0.45	1.65 $\pm$ 60.03	333
2	10 <sup>-2</sup> -10 <sup>-1</sup>	5.93 /17.08	686/872	1015/1327	-1.01 $\pm$ 0.43	1.25 $\pm$ 0.52	160 $\pm$ 440	118
3	10 <sup>-1</sup> -1	7.44 /21.58	555/680	1518/1634	-1.69 $\pm$ 0.41	2.77 $\pm$ 0.84	1245 $\pm$ 1707	18

**Table 2.** Time required to calculate relative error inferior to 10 %,30 % and 50 % for the LWC, potential temperature, and vertical wind,W, of reference cloud and LWC<sub>tot</sub> for 1-RPA, 2-RPA and 1-RPA+GPR exploration.

	relative error (time [s])															
	LWC				$\theta$				w				LWC tot (time [s])			
	1RPA	2RPAs	1GPR	2GPR	1RPA	2RPAs	1GPR	2GPR	1RPA	2RPAs	1GPR	2GPR	1RPA	2RPAs	1GPR	2GPR
10%	-	-	658	-	-	-	574	458	-	-	-	603	-	-	210	150
30 %	726	463	255	164	480	223	186	135	715	561	324	170	-	-	99	73
50 %	325	185	113	80	229	132	74	71	420	265	131	86	-	356	80	21