

# Mapping methane plumes at very high spatial resolution with the WorldView-3 satellite

Elena Sánchez-García<sup>1\*</sup>, Javier Gorroño<sup>1\*</sup>, Itziar Irakulis-Loitxate<sup>1</sup>, Daniel J. Varon<sup>2</sup>, Luis Guanter<sup>1</sup>

<sup>1</sup>Research Institute of Water and Environmental Engineering (IIAMA), Universitat Politècnica de València, Valencia, Spain

5 <sup>2</sup>School of Engineering and Applied Sciences, Harvard University, Cambridge, MA, USA

\* These authors contributed equally to this work.

*Correspondence to:* Elena Sánchez-García (elsncgar@upv.es)

**Abstract.** The detection of methane emissions from industrial activities can help enable effective climate change mitigation strategies. These industrial emissions, such as from oil and gas (O&G) extraction and coal mining, typically occur as large  
10 plumes of highly concentrated gas. Different satellite missions have recently shown the potential to map such methane plumes from space. In this work, we report on the promising potential of the WorldView-3 (WV-3) satellite mission for methane mapping. This relies on its unique very high spatial resolution (up to 3.7 m) data in the shortwave infrared part of the spectrum, which is complemented by a good spectral sampling of the methane absorption feature at 2300 nm and a high signal to noise ratio. The proposed retrieval methodology is based on the calculation of methane concentration enhancements from pixel-wise  
15 estimates of methane transmittance at WV-3 SWIR band 7 (2235-2285 nm), which is positioned at a highly-sensitive methane absorption region. A sensitivity analysis based on end-to-end simulations has helped to understand retrieval errors and detection limits. The results have shown the good performance of WV-3 for methane mapping, especially over bright and homogeneous areas. The potential of WV-3 for methane mapping has been further tested with real data, which has led to the detection of 26 independent point emissions over different methane hotspot regions such as O&G extraction fields in Algeria  
20 and Turkmenistan, and the Shanxi coal mining region in China. In particular, the detection of very small leaks (<100 kg/h) from oil pipelines in Turkmenistan shows the unique capability of WV-3 for mapping industrial methane emissions from space. The mission includes pointing capabilities that allow for a daily revisit over these oil pipelines or other critical infrastructure.

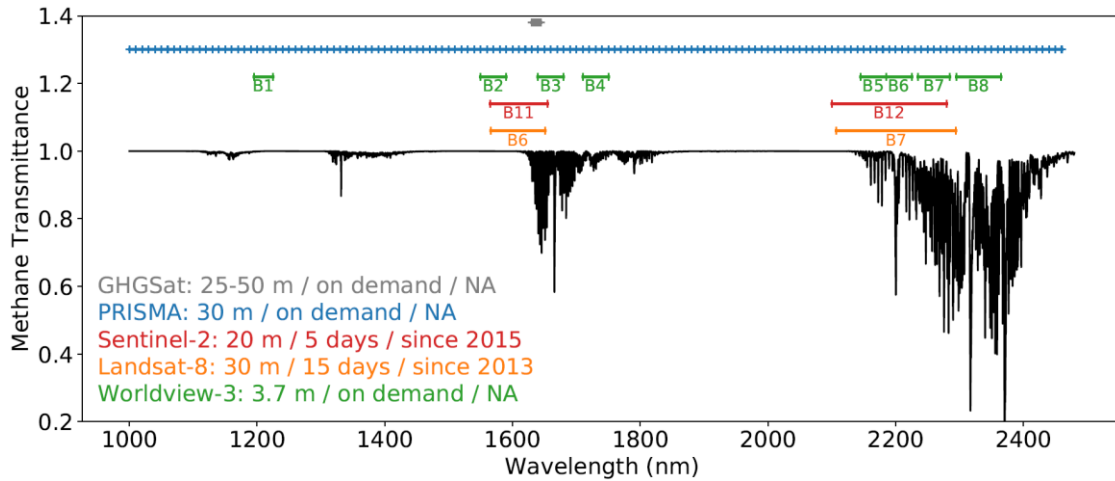
## 1 Introduction

Widespread awareness of the accelerated increase of methane and other polluting gases in the atmosphere has heightened the  
25 need for new technologies to rapidly identify and control emission sources. During the last decades, increasing methane levels have been related to the rise of global warming risk. Reducing or stabilizing emissions would allow for a prompt decrease of atmospheric concentrations thanks to methane's relatively short lifetime of about nine years (Saunio et al., 2020). Therefore, controlling the main contributors of methane emissions is seen as an effective option to mitigate climate change. Methane

emissions from the fossil fuel industry represent a critical opportunity for mitigation, given the large number of uncontrolled  
30 emission point sources in oil and gas (O&G) and coal production areas worldwide (Jackson et al., 2020).

Substantial advances have been made in recent years towards the detection and quantification of methane point emissions from  
space (Jacob et al., 2016). The GHGSat satellite constellation was the first remote sensing system optimized for the monitoring  
of methane point emissions (Jervis et al., 2021) and is allowing the detection of a large number of anthropogenic methane  
emissions around the world as shown in Varon et al. (2019, 2020). More recently, imaging spectrometers covering the entire  
35 400-2500 nm region (known as hyperspectral land-surface imagers) have also shown their potential for mapping methane  
plumes from space such as the ZY1 AHSI, Gaofen-5 (GF5) AHSI, and PRISMA missions described by Irakulis-Loitxate et al.  
(2021; 2022) and Guanter et al. (2021). GHGSat and these hyperspectral missions share a relatively high sensitivity to methane  
concentration enhancements and a spatial sampling in the range of 25-50 m, but their acquisitions are sparse in time and space.  
The Sentinel-2 (S2) multispectral mission, also originally developed for land applications, can help to overcome this limitation  
40 with frequent and spatially-continuous observations (Varon et al., 2021), albeit with a substantially lower sensitivity to  
methane. Landsat-7 and 8 missions, whose spectral channel configuration can provide a methane detection sensitivity  
comparable to S2 (see Fig. 1), offer the possibility for enlarging timeseries (Landsat-7 has operated since 2003). However,  
Landsat has a coarser spatial and temporal resolution (30 m vs. 20 m, and 15 days vs. 5 days) compared to S2. Methane  
mapping efforts with all those missions greatly benefit from the synergistic use of the TROPOspheric Monitoring Instrument  
45 (TROPOMI) onboard the Sentinel-5 Precursor satellite (Hu et al., 2018; Gouw et al., 2020; Lauvaux et al., 2021). TROPOMI  
data allow identifying regions with strong methane concentration enhancements (Sadavarte et al., 2021) where the  
aforementioned missions can focus on the detection of single emitters.

The present work describes a new breakthrough in this quickly developing field towards the global mapping of methane point  
emissions. Using very high-resolution shortwave infrared (SWIR) measurements from the WorldView-3 (WV-3) satellite, we  
50 have mapped methane plumes from different locations around the Earth at a spatial resolution of 3.7 m (E. S. Imaging, 2020).  
Positive plume detections have been obtained from O&G extraction fields in Algeria and Turkmenistan, and the Shanxi coal  
mining region in China. Until now, methane retrievals at such high-resolution were only possible for airborne instruments, like  
the AVIRIS and AVIRIS-NG spectrometers operated by NASA JPL (Frankenberg et al., 2016; Jongaramrungruang et al.,  
2019; Cusworth et al., 2019; Duren et al., 2019). The WV-3 instrument combines a high spatial resolution with a high signal-  
55 to-noise ratio (SNR) and rich spectral coverage of the strong methane absorption feature around 2300 nm (see Fig. 1).  
Furthermore, the onboard system includes pointing capabilities that are able to deliver a daily revisit or better over critical  
infrastructure. These unique features allow WV-3 to fill an important observational gap in international satellite methane  
monitoring capabilities.



60 **Figure 1. Comparison of the spectral sampling in shortwave infrared of different spaceborne instruments with potential for methane mapping. All of these instruments sample the methane absorption feature around 2300 nm. The spatial and temporal sampling characteristics of each mission (spatial resolution/temporal resolution/temporal coverage) are also provided.**

Mapping methane emissions at this very high spatial resolution enables a substantial improvement of emission detection thresholds. Accurate identification of the particular infrastructure elements responsible for the emissions and more precise  
 65 quantification of emission rates is also made possible by the unprecedented spatial resolution of WV-3.

## 2 Materials and Methods

### 2.1 Methane retrieval

Methane retrieval algorithms for hyperspectral instruments typically estimate methane concentration enhancement by fitting highly-resolved observations in the SWIR spectral region to a modeled radiance spectrum (Thorpe et al., 2014; Jacob et al.,  
 70 2016). In a single overpass, hyperspectral instruments onboard satellites or aircraft can resolve the SWIR spectral region with a typical spectral resolution ranging from 0.1 to 15 nm.

For multispectral instruments like S2, Landsat, and WV-3, the entire SWIR spectral region cannot be resolved. Nonetheless, it is possible to retrieve methane concentration enhancements within an image from differences in methane transmittance between spectral bands. To calculate methane transmittance, we normalize the radiance at a spectral channel affected by  
 75 methane absorption by a “methane-free” reference band, i.e. with no excess methane. In the absence of multi-temporal data, this reference can be built from one or several neighboring channels that are mostly insensitive to excess methane. WV-3 contains a richer spectral design with 8 SWIR bands at 3.7 m spatial resolution (see Fig. 1) and narrower bandwidth as compared to the S2 and Landsat missions. Specifically, it contains two bands (B7 and B8) in regions of strong methane absorption and spectrally close bands (B5 and B6) at less than 100 nm separation (as opposed to the 600 nm spectral distance

80 between S2 B11 and B12 bands). WV-3 images in the SWIR are processed with a Time-Delayed-Integration (TDI) of 16 lines. TDI refers to the exposure of the same area multiple times by different pixels in the detector as the satellite is moving along the orbit. These measurements can be added and consequently improve the noise of the image. This contributes to a superior SNR as compared to other multispectral missions such as S2 (the latter includes TDI of 2 lines in the SWIR bands).

Thus, the proposed rationale to detect methane plumes is based on an estimation of the plume transmittance defined by the ratio of a methane-sensitive band such as WV-3 B7 or B8 with excess methane present, and the corresponding “methane-free” reference band. Mathematically the plume transmittance  $T_{\text{plume}}$  can be described as:

$$T_{\text{plume}}(\lambda) \approx \frac{L}{L_{\text{ref}}} = e^{-AMF \cdot \sigma_{\text{CH}_4} \cdot \Delta X_{\text{CH}_4}} \quad (1)$$

where  $L$  and  $L_{\text{ref}}$  represent the radiance of the methane-sensitive band and the “methane-free” reference band respectively. AMF refers to the geometric air mass factor,  $\sigma_{\text{CH}_4}$  ( $\text{ppm}^{-1}$ ) refers to the methane absorption cross section, and  $\Delta X_{\text{CH}_4}$  ( $\text{ppm}$ ) refers to the methane column concentration enhancement. The latter expresses the increment produced by the plume from the background methane present in the atmospheric column.

We have tested that both the spectral response function (SRF) knowledge and water vapor absorption constitute minor sources of uncertainty in the estimation of  $T_{\text{plume}}$ . The sensitivity study setup a reference scene with a simulated methane plume ( $Q=1000$  kg/h). In order to test the impact of the SRF knowledge on the methane retrieval, the SRF central wavelength has been shifted for the convolution of the methane transmission. A shift of  $\pm 5$  nm has been selected as a “typical” tolerance of a multispectral mission design. The results show that the impact of spectral shifts on B8 is lower than 1% and larger errors were observed in B7 (up to 8%) due to the larger changes in methane absorption within this band. The water vapor column has been modified in a range from 0 to 40 mm representative of extreme values in the atmosphere. The results for water vapor errors can reach up to 5% for B8 and just 1% for B7.

100 The approach to obtain the  $L_{\text{ref}}$  “methane-free” reference band ( $L$  in the absence of excess methane) is based on the idea that this could be approximated using other spectral channels that are mostly insensitive to excess methane. The simplest form of this model would be the ratio between B7 and B5 which are spectrally close and correlated (see Fig. 1).

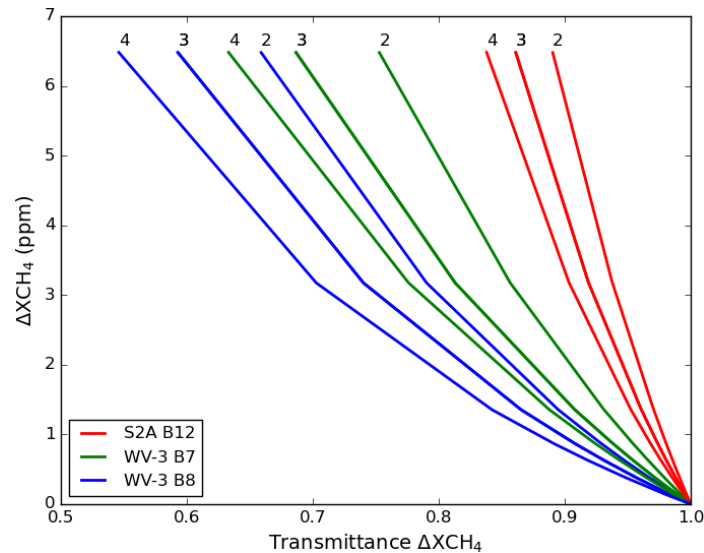
From the several options that have been considered (see Fig. 6), the selected method for the estimation of this “methane-free” band is based on a multiple linear regression (MLR) of B1-B6 with B7 as the target band (B7/B7<sub>MLR</sub> method). Despite B8 being more sensitive to methane absorption, this band has shown lower spectral correlation with B1-B6 bands as compared to B7 (see results in subsection 3.1). Out of the six bands considered for the regression, three of them (B3, B5, and B6) are marginally sensitive to methane. In the case of B3, its weight on the regression is small and has negligible impact thus we do not include this band. However, in the case of B5 and B6, their spectral closeness to B7 improves the regression and outweighs

the impact that the residual methane sensitivity of these bands produces on the retrieval. The effect of B5 and B6 on the retrieval performance was tested by producing a set of simulations that do not incorporate the methane plume transmittance on these two bands. The performance of these fit-for-purpose products was compared to the full end-to-end simulated products. We find that including these spectral bands with partial methane sensitivity in the MLR reduces the integrated methane enhancement (IME; total excess methane mass; Frankenberg et al., 2016) of retrieved plumes roughly 7%.

The methane plume quantification with WV-3 is obtained by isolating the methane column enhancement in Eq. (1). Then,  $\Delta XCH_4$  becomes a function of the AMF and the radiance ratio  $L/L_{ref}$  of SWIR B7 (2235-2285 nm). A look-up table (LUT) can be generated so that the relationship between these two quantities and the methane enhancement is established and expressed as follows:

$$\Delta XCH_4 = \frac{-\log(L/L_{ref})}{AMF \cdot \sigma_{CH_4}} \quad (2)$$

Figure 2 shows the LUT relationship between the methane plume transmittance and the methane column enhancement ( $\Delta XCH_4$ ) for different values of AMF. The figure also highlights the optimized spectral design of WV-3 with respect to other multispectral missions such as S2. It illustrates how both WV-3 B7 and B8 cover a wider range of plume transmittance values as compared to S2 band 12. Furthermore, it shows how the sensitivity increases with the AMF values although this is at the expense of potential shadowing and surface directional effects (Guanter et al., 2021).



125 **Figure 2. Relationship between the methane plume transmittance values and the methane column enhancement ( $\Delta XCH_4$ ) for the methane absorption bands (~2300 nm) of S2A B12, WV-3 B7 and WV-3 B8. The curves are given for three different values of AMF representing different angular conditions ranging from 0 to 60 degrees (labeled above as 2 to 4).**

## 2.2 Detection of methane plumes

130 The detection of methane plumes begins with the visual inspection of the retrieved  $\Delta XCH_4$  maps. It is generally easy to distinguish the plumes from the background in the retrieved maps due to the low random noise and the characteristic shape of the plumes. This noise is generated by the inherent instrument noise, misregistration between the bands, and several surface features that complicate the retrieval by having a similar spectral signature to methane. Once the plumes have been initially identified, it is checked that their shape is consistent with the Goddard Earth Observing System-Fast Processing (GEOS-FP)  
135 10-m wind direction data. That is, the shape of a gas plume is expected to originate at high  $\Delta XCH_4$  values and decrease progressively downwind. Once the plumes have been verified, they are collocated with high spatial resolution true color images of the area in order to identify the underlying infrastructure responsible for this emission. For this process, we use Google Earth images and the first SWIR band (B1~1200 nm) of the WV-3 images.

The next step of the detection processing zooms in on each real plume to isolate it from the background in order to compute  
140 the total area covered by the emission. The methodology proposed in Thompson et al. (2016) is based on a statistical significance of a rectangular region of 500 samples directly upwind of the plume meanwhile, Varon et al. (2018) uses the statistical significance ( $p \leq 0.05$ ) associated with a  $5 \times 5$  window Student's t-test. In both cases a median filter is set to smooth the plume mask and remove outliers.

Here, a semi-automatic process has been implemented where the plume is isolated by applying a mask at the 95% confidence  
145 level, and a square dilation mask of several pixels a-posteriori. Similar to the median filter, a mask dilation ensures that plume tails are included in the detected area. Moreover, it guarantees a plume selection with a reduced number of discontinuities as expected from the spatial distribution of a gas plume. Finally, the detected outliers in the vicinity of the plumes are removed through feature selection techniques. These, such as clustering properties and blob detection measures, automatically identify the features in the image which are further filtered-out based on their properties such as number of pixels or eccentricity.  
150 Techniques that allow to get a kind of image classification to detect the plume shape and remove those features that, despite its high  $\Delta XCH_4$  values, are not part of the emission. Sometimes the radiance of the satellite bands is also used in this discrimination process.

## 2.3 Estimating emission flux rates

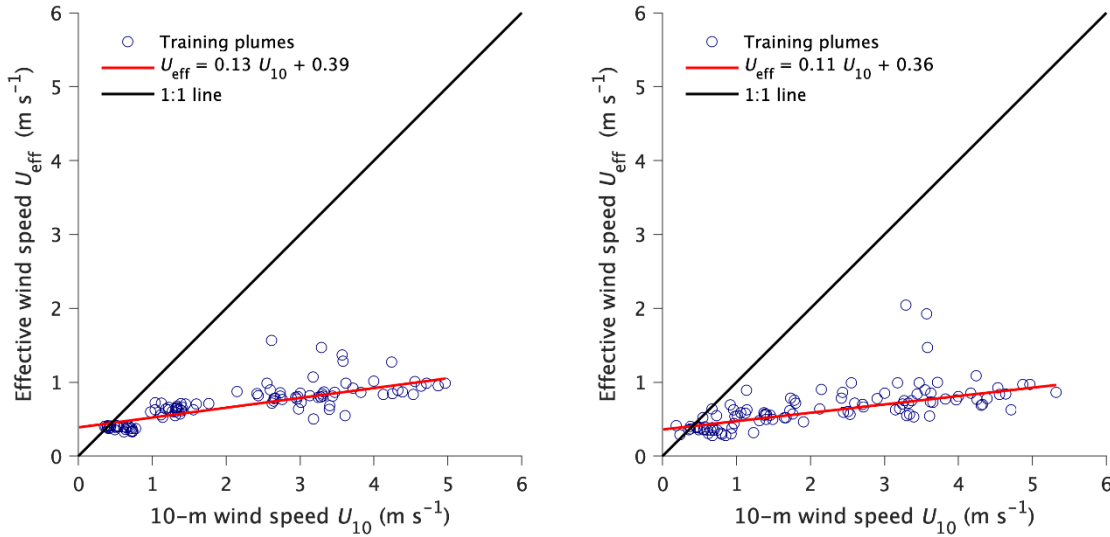
155 Once the plumes are identified, the associated flux rate  $Q$  is obtained by applying an IME method (Frankenberg et al., 2016; Varon et al., 2018). The  $\Delta XCH_4$  values are converted from ppm to ppm m units and to kg (Thompson et al., 2016; Duren et al., 2019) by considering the 3.7 m of WV-3 pixel spatial resolution, the Avogadro's law where 1 mole of gas occupies 22.4 L, the estimation of 0.01604 kg per mole of methane, and a factor of 8000 that accounts for the column height assuming an

atmosphere of 8 km. Then, we compute IME in kg for each plume as the total sum of the  $\Delta X_{CH_4}$  pixels enclosed by the plume mask. The last step relates the emission flux rate with the calculated IME as:

$$Q \left( \frac{kg}{h} \right) = \frac{U_{eff} \left( \frac{m}{s} \right) \cdot IME \text{ (kg)} \cdot 3600}{L \text{ (m)}} \quad (3)$$

where L is a plume length scale in m (square root of the entire area covered by the plume pixels), and  $U_{eff}$  the effective wind speed derived from Weather and Research Forecasting Model large-eddy simulation (WRF-LES) according to Varon et al. (2018) methodology.

For this study, the WRF-LES simulations have been tuned at the spatial resolution and measurement uncertainty of WV-3 (~4 m resolution and 1-sigma white noise varying from 120 to 370 ppb depending on the site; see Fig. 8). Then, six IME calibrations have been performed for each of these three 1-sigma noise levels and considering two different emission ranges:  $Q \in [100, 3000]$  kg/h and  $Q \in [100, 500]$  kg/h. Figure 3 shows the fits obtained for the extreme cases out of the six IME calibrations which correspond respectively to  $\sigma = 120$  ppb and  $Q \in [100, 3000]$  kg/h (the highest signal case), and to  $\sigma = 370$  ppb and  $Q \in [100, 500]$  kg/h (the lowest signal case).



**Figure 3. Scatter plots relating the effective and local 10-m wind speeds ( $U_{eff}$  vs.  $U_{10}$ ) in the IME method, characterized with WRF-LES training plumes. The graph on the left shows the fit obtained for  $\sigma = 120$  ppb and  $Q \in [100, 3000]$  kg/h. The graph on the right shows the fit for  $\sigma = 370$  ppb and  $Q \in [100, 500]$  kg/h. Black and red lines show respectively the 1:1 fit and the linear regression fit.**

175

The similarity achieved between the six individual fits leads to the adoption of the following formula that considers the middle values of the coefficients obtained from the calibrations:

$$U_{eff} \left( \frac{m}{s} \right) = 0.12 \cdot U_{10} + 0.38 \quad (4)$$

In this proxy, the measurable 1-h average 10-m wind speed ( $U_{10}$ ) derives from the two north-south and east-west wind components of GEOS-FP dataset (<https://portal.nccs.nasa.gov/datashare/gmao/geos-fp/das/>) at the satellite acquisition time and for the location of each plume. Consider that GEOS-FP is a meteorological reanalysis product with a resolution of  $0.25^\circ \times 0.3125^\circ$  (Molod et al., 2012).

Consider that the definition of L affects the shape of the  $U_{eff} = f(U_{10})$  relationship, so the reason we need such low  $U_{eff}$  values here (much lower than  $U_{10}$ ), is because the area of plume mask is very low for thin, high-resolution plumes. In addition, this calibration has been set for small plumes because the LES model domain is only  $\sim 200$  m across. Then, this would be expected not to be accurate for larger plumes causing underestimates of Q because these plumes, even sampled at 4-m resolution, are transported over a much larger part of the boundary layer than the small ones. Therefore, the  $U_{eff}$  calibration set for PRISMA in Guanter et al. (2021) is used for those plumes over 200 m in length.

For each Q value, we have estimated an associated uncertainty similarly to the method used in Cusworth et al. (2020), Guanter et al. (2021), and Irakulis-Loitxate et al. (2021; 2022). The uncertainty formalism is based on a Monte Carlo propagation (JCGM, 2008) of the uncertainties in IME,  $U_{10}$ , and the coefficients of Eq. (4) through Eqs. (3-4). Here, the uncertainty of the input  $U_{10}$  is set to a conservative 50% uncertainty  $k=1^1$  estimate in GEOS-FP  $U_{10}$  data consistent with the  $\sim 1.5$ -m/s error standard deviation in wind speed given by Varon et al. (2020). The uncertainty in the IME is calculated based on the uncertainty combination of different pixels with an associated “retrieval noise”. This is the consequence of instrument noise, misregistration, and surface heterogeneity. Finally, an uncertainty  $k=1$  of 0.01 for both the slope and intercept of Eq. (4) is included in the Monte Carlo propagation. This is a proxy of the regression sensitivity to different scenarios such as different flux rate ranges or noise levels previously discussed.

The different error samples in the Monte Carlo propagation have been treated as uncorrelated. This can be justified because there is no expected relationship between the errors in IME,  $U_{10}$ , and the intercept/slope in Eq. (4) as they are largely obtained from independent processes. A weak correlation of  $\sim 0.28$  between the slope and intercept errors in Eq. (4) has been empirically determined but considered of negligible impact on the overall budget. The result of the Monte Carlo propagation is an error distribution associated with the calculated Q value. The standard deviation of this error distribution is considered the uncertainty  $k=1$  for the Q of each plume under the assumption of a normal distribution. Both the accuracy of the IME model and its relationship with the length scale L of the plume are considered to be out of the scope of this work.

---

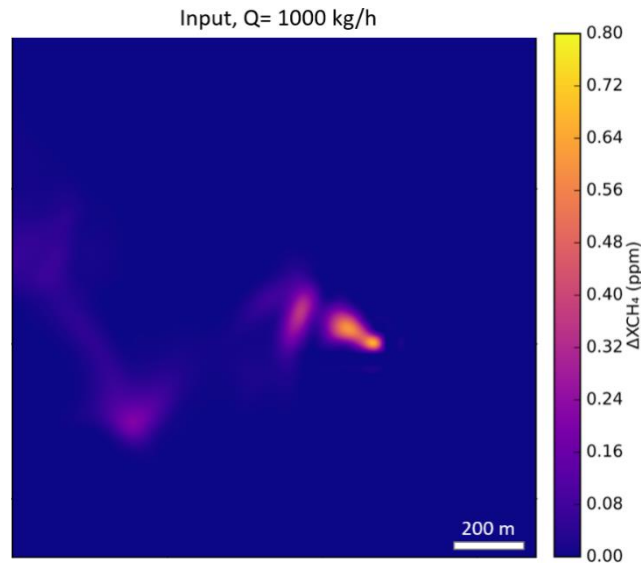
<sup>1</sup> The coverage factor,  $k$ , is a factor applied to the combined standard uncertainty that specifies the fraction of the probability distribution that the uncertainty represents (JCGM, 2008). For  $k=1$  and an ideal normal distribution, it is equivalent to the standard deviation of the probability distribution.



## 205 2.4 Sensitivity analysis based on end-to-end simulations

The potential of WV-3 for methane mapping has been assessed through a sensitivity analysis based on end-to-end simulations. The simulations are generated by convolving WV-3 TOA radiance scenes with synthetic methane plumes generated with the WRF-LES.

210 The WRF-LES simulations are set at  $30\text{ m} \times 30\text{ m}$  spatial resolution,  $100\text{ W m}^{-2}$  sensible heat flux and a mean wind speed of  $3.5\text{ m s}^{-1}$  as in Cusworth et al. (2019). These original plumes are upsampled to  $3.7\text{ m}$  in order to match the spatial resolution of WV-3. The plumes are further scaled from an initial source rate  $Q$  of  $100\text{ kg/h}$  to the desired flux. The upsampling and scaling of the reference plume has no effect on the sensitivity analysis but a small interpolation effect that generates a second-order error. An example of the resulting methane plume is shown in Fig. 4 with a  $Q$  of  $1000\text{ kg/h}$ .

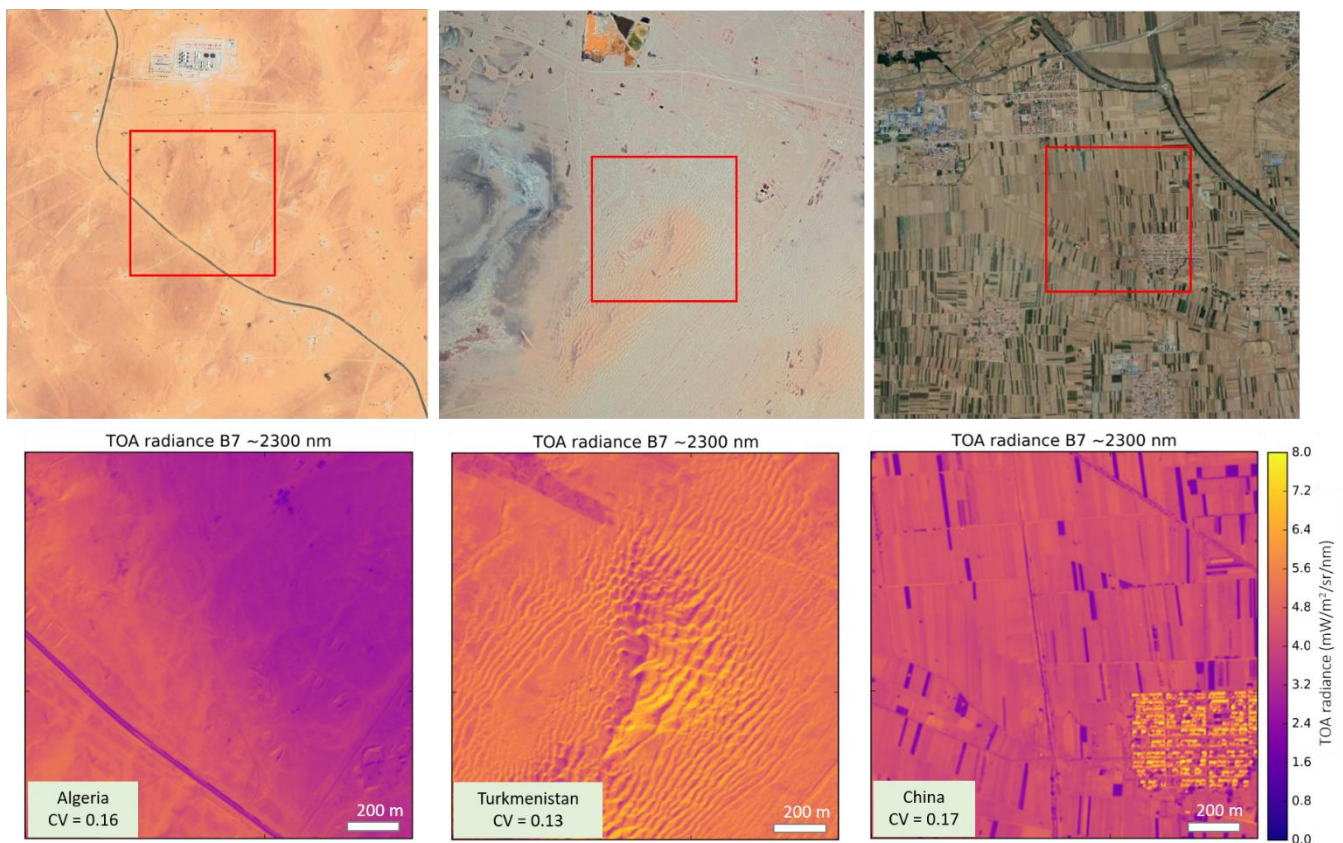


215 **Figure 4. Methane column mixing ratios for an example simulated plume with  $Q$  1000 kg/h used as a reference over the same subset of  $1.5 \times 1.5\text{ km}^2$  shown in the bottom row of Fig. 5, Fig. 6 and Fig. 7.**

Similar to Cusworth et al. (2019), the spectral optical depth of the methane plume  $\tau(\lambda)$  is calculated as the sum of 72 layers of the atmosphere. At each layer, we multiply the HITRAN absorption cross sections ( $\sigma_H$ ; Kochanov et al., 2016), the vertical column density of dry air (VCD), and the methane volume mixing ratio enhancement ( $\Delta VMR$ ). The optical depth is weighted  
220 by the AMF that considers the slant optical path due to both the illumination and viewing angular conditions. We obtain a methane plume transmittance map at a fine spectral resolution by applying Beer's law. Finally, this fine spectral resolution map is convolved with the WV-3 SRF and the result is a methane plume transmittance map for each one of the WV-3 spectral bands.

The calculated plume transmittance for each band is multiplied by the observed radiance at each one of the respective bands. This results in simulated methane plume products that incorporate a real scene from WV-3 with realistic surface, instrument noise, or viewing effects among others. The a-posteriori convolution of the band radiance with the plume transmittance produces a small bias that is partially compensated.

The end-to-end simulations have been generated for three different sites in Algeria, Turkmenistan and China whose spectral response behave differently regarding their surface conditions (see Fig. 5). The WV-3 images used for the simulations have been acquired on the 29<sup>th</sup> December 2020 in Algeria, the 27<sup>th</sup> April 2021 in China, and the 29<sup>th</sup> March 2021 in Turkmenistan. Fig 5. displays in the top row an RGB snapshot of the three sites. The area defined by the red square on the RGB snapshots shows the WV-3 SWIR B7 subsets displayed at the bottom row of the figure which are the ones used for the end-to-end simulations.



235 **Figure 5.** Sites considered for end-to-end simulations. Top panels represent the sites in RGB color from © Google Earth imagery (at earlier dates). The areas defined by a red square of  $1.5 \times 1.5 \text{ km}^2$  ( $406 \times 406$  pixels) are the WV-3 SWIR subsets used as input for the sensitivity analysis and where simulated plumes have been added. The © WV-3 SWIR B7 subsets are displayed at the bottom row and the values of the Coefficient of Variation (CV; standard deviation over mean) are labeled for each site.

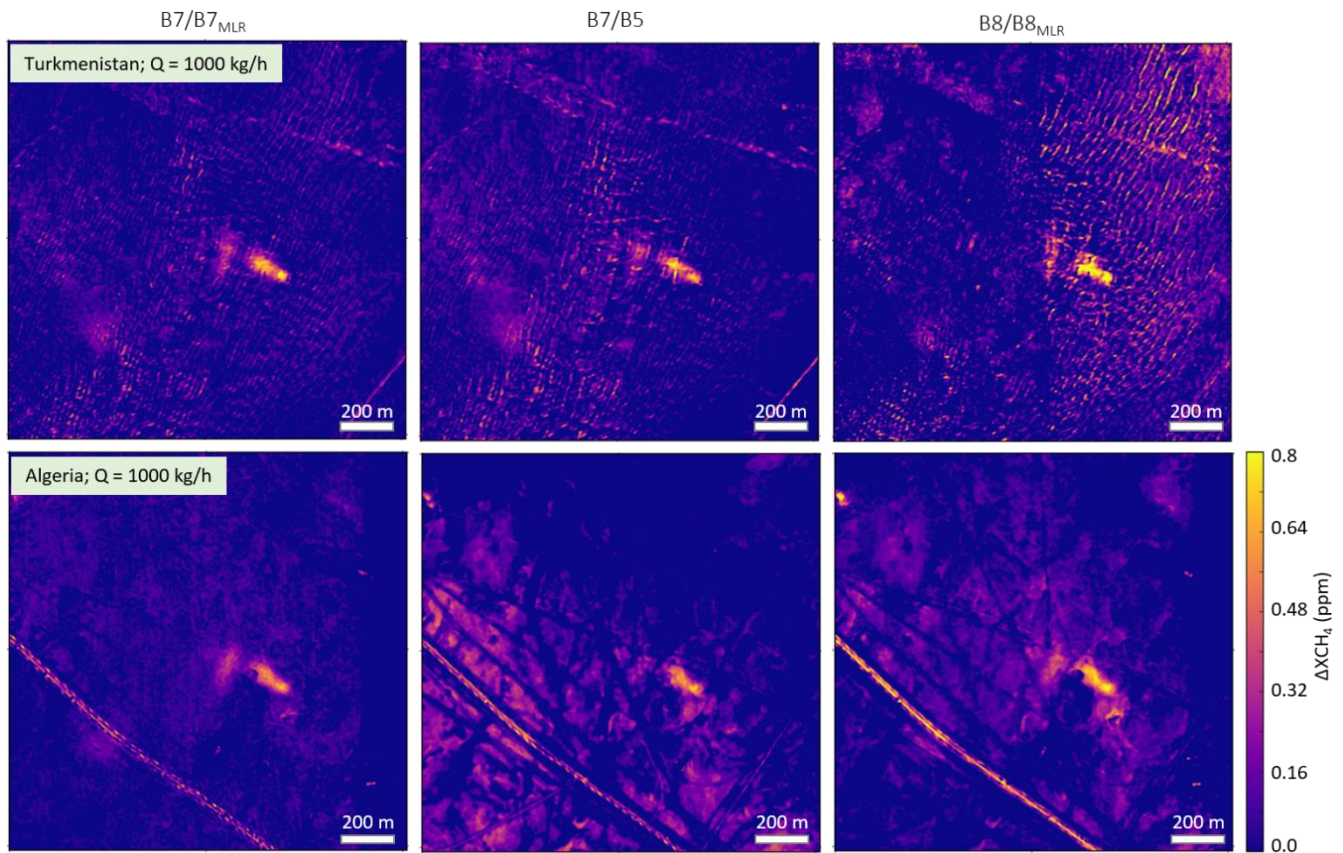
Among the chosen sites, the one in Turkmenistan shows the lowest spatial variations in the SWIR B7, whereas the one in  
240 China is expected to be the most challenging site for methane plume detection due to its higher spectral and spatial  
heterogeneity. The Algeria site covers a largely homogeneous area similarly to Turkmenistan, although it contains some  
cirrus/cloud shadows at the right half of the selected subset that alter the radiance in SWIR B7.

Finally, it is important to remark that the sites selected for the simulations are realistic insofar as they are well-known areas of  
O&G and coal production facilities with known methane emissions (Irakulis-Loitxate et al., 2021; 2022; Varon et al., 2021;  
245 Cusworth et al., 2021).

### 3 Results

#### 3.1 Retrieval performance with simulated plumes

The end-to-end WV-3 simulations defined in subsection 2.4 have been used here to test the performance of different methane  
retrievals. Figure 6 presents the  $\Delta XCH_4$  maps at two sites that result from the application of different approaches to calculate  
250 a “methane-free” reference band. The retrieval using a radiance ratio of B8 against the MLR of B1-B6 with B8 as the target  
band shows the largest sensitivity as compared to the other two retrievals using B7. However, the result also exhibits a  
pronounced impact of outliers (e.g., the dunes in Turkmenistan or the roads in Algeria) due to the larger spectral distance from  
B8 and B1-B6. The results using a radiance ratio of B7 against the MLR of B1-B6 and that of a single ratio of B7 against B5  
present similar results. Nonetheless, the former results in a clear shape of the plume and a slight decrease of outliers. Thus, the  
255 calculation of the plume transmittance as a radiance ratio of B7 against the MLR of B1-B6, described in subsection 2.1, is  
selected as the best compromise between detection sensitivity and low outlier generation.

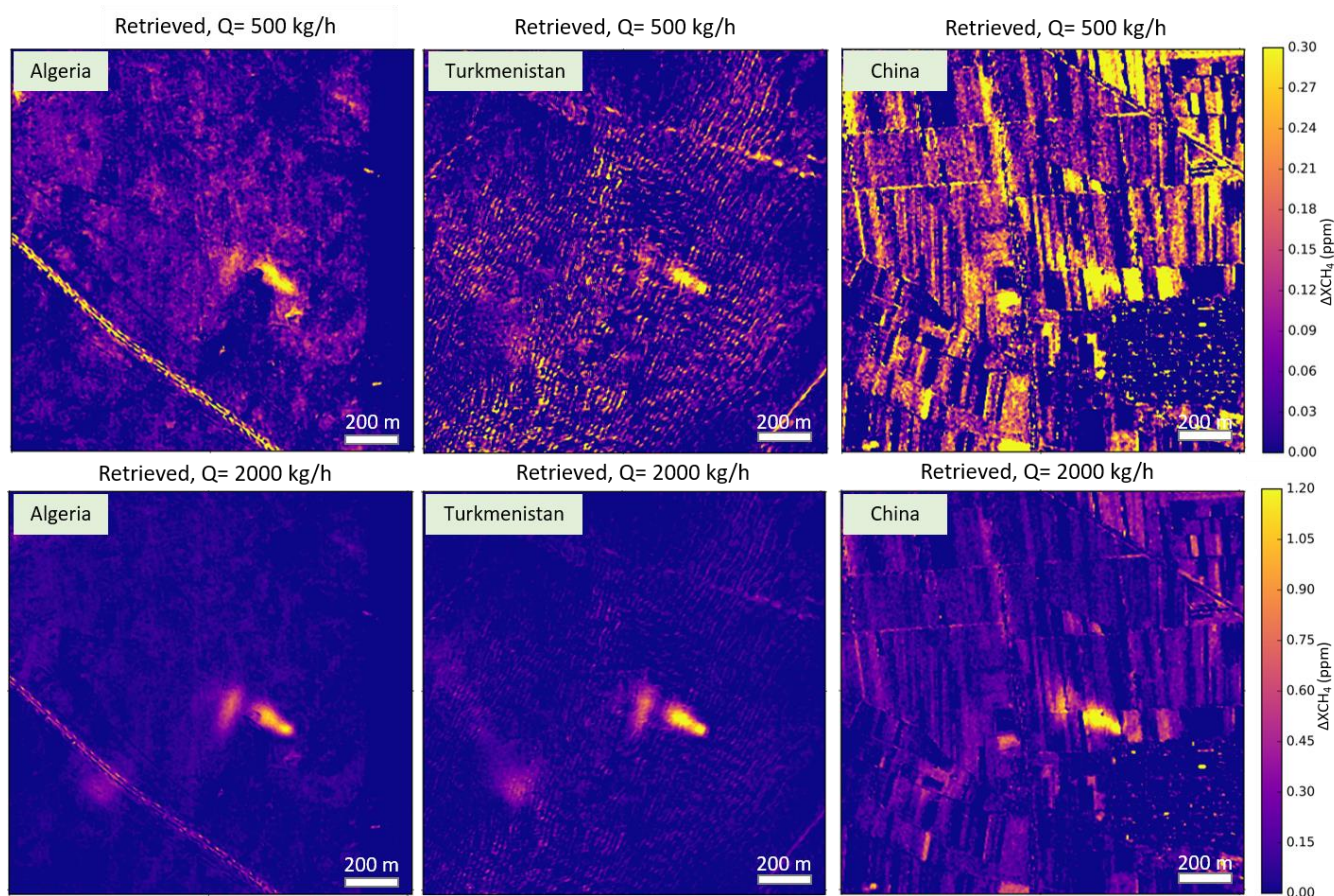


260 **Figure 6. Comparison between different  $\Delta XCH_4$  retrieved maps for the simulations at two sites (with the input plume of  $Q=1000$  kg/h in Fig. 4), and obtained by carrying out three different retrievals: from left to right: the ratio between B7 and B7 predicted (MLR with B1 to B6); the ratio between B7 and B5; and the ratio between B8 and B8 predicted (MLR with B1 to B6).**

The selected methodology has been performed with the end-to-end simulations at various sites and for different  $Q$  levels. The method takes the radiance ratio  $B7/B7_{MLR}$  which defines a proxy of the methane plume transmittance that can be associated with a methane enhancement value according to Beer's law. Different flux rates have been simulated leading to a set of  $\Delta XCH_4$  maps that have been further processed in order to isolate the plume from the background, as explained in subsection 2.2.

265 Figure 7 displays the retrieved  $\Delta XCH_4$  maps for an input flux rate of 500 and 2000 kg/h at the three sites of study. A simple glance at the enhancement maps suggests that the best results are obtained in the Turkmenistan and Algeria sites. The Algeria maps show a discontinuity on the right side of the image. This effect could be caused during the WV-3 product processing due to focal plane discontinuities. Different collection scenarios are considered in the VW-3 mission that include the generation of an image with different overpasses each with a swath of 13.1 km. Based on the results presented here this effect must be  
 270 considered a minor one largely due to the spectral correlation nature of the error. Nonetheless, this effect is compensated in

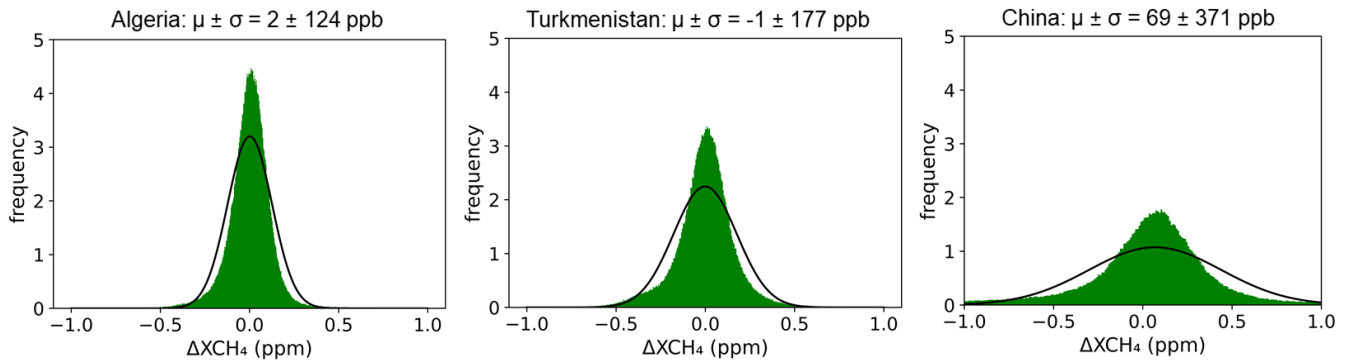
the results presented in subsection 3.2. Finally, the enhancement maps of China present many features that alter the retrieval and require higher methane plume signals in order to positively detect them.



275 **Figure 7.  $\Delta XCH_4$  maps for the simulations at the three different sites analyzed (same subsets as Figs. 5 and 6) and two values of emission flux rate  $Q$  500 kg/h and  $Q$  2000 kg/h.**

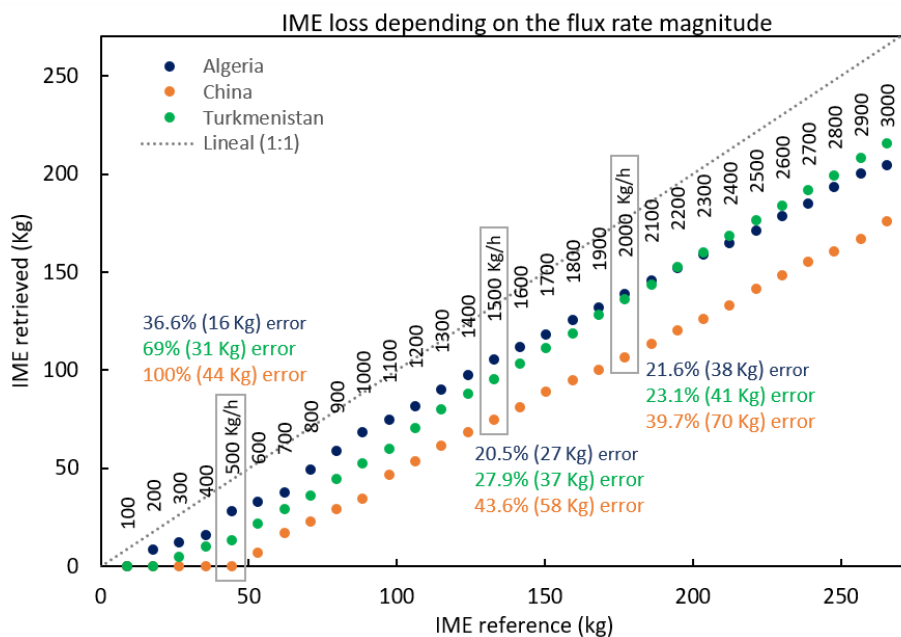
The performance of the retrieval is easier to understand if we attend to the background noise of the  $\Delta XCH_4$  maps. Figure 8 shows the distribution of the retrieved  $\Delta XCH_4$  maps for the three sites presented in subsection 2.4. The data represents a subset of 600x600 pixels of the original images. The histograms indicate the variation of the noise levels across the different sites from a low level of 120 ppb in Algeria up to 370 ppb in China (1-sigma retrieval errors used to set Eq. (4)). These values, as  
 280 expected, are sensibly larger than other missions with a lower spatial resolution due to the increased surface variability. For example, the retrieval noise reported by Guanter et al. (2021) using PRISMA data is almost half of the values shown here for similar sites. Another observed difference is the non-normal nature of the retrieval noise in WV-3 (the same plots for the retrieval noise in PRISMA show an almost perfect Gaussian fit). Further investigation has concluded that this non-normal behavior is not produced by any step in the retrieval itself but is present in the radiance ratio  $L/L_{ref}$ . Different ratios were

285 investigated, all producing a non-normal distribution and it remains even after applying a spatial binning to, e.g., 30 m. Thus, it is likely that this non-normal behaviour is the consequence of a noise pattern between B7 and the rest of the bands (e.g., due to the large number of TDI stages which might enhance the prevalence of non-normal effects). However, it requires a better understanding of the calibration and instrument specifications that are not currently available.



290 **Figure 8. Histograms of the resulting 600x600  $\Delta XCH_4$  subset areas using three original WV-3 images with a different type of surface. The mean and standard deviation values of the distributions for each site are shown in the chart titles.**

The methane plumes presented in Figure 7 have been isolated from the background considering the noise levels in Figure 8, and the procedure explained in subsection 2.2. Figure 9 displays the relationship between the retrieved IME values and the known reference input for the simulations at the three sites. The IME is calculated from a reference mask at each flux rate level. This typically results in smaller plumes, with lower IME than the reference, since we attempt to reconstruct that mask in the presence of noise. The simulations in China, Turkmenistan, and Algeria have been performed at a Q step size of 100 kg/h. The results highlight a general underestimation of the retrieved IME values, i.e., smaller plumes with lower IME than the reference. For example, considering an input flux rate of 1000 kg/h, the results show an IME underestimation of 22% for Algeria, rising up to 61% for the case of China. The missing fractions of the total IME are larger at all input levels for the  
 300 China case, and the lowest fraction is associated with the Algeria simulations. This is a similar result to other studies such as Guanter et al. (2021) and comes to reinforce the importance of surface heterogeneity on the performance retrieval. It is important to remark that the IME loss scales in absolute values with the value of simulated Q. However, in relative terms, this loss tends to become smaller.



305 **Figure 9. Test of methane detection limits.** The scatter plot relates the different referenced IME values -according to each input flux rate  $Q$  labeled above the dots- and the reconstructed IME from the retrieved  $\Delta XCH_4$  maps of Algeria (blue dots), Turkmenistan (green dots), and China (orange dots) sites. For  $Q$  500 kg/h,  $Q$  1500 kg/h and  $Q$  2000 kg/h, the IME losses are labeled in colors for each site showing the % of error set in the IME reconstruction, and the total underestimated magnitude of the plume in Kg. Black line represents the 1:1 fit.

### 310 3.2 Real case studies of methane detection

Different  $\Delta XCH_4$  maps are presented here derived from real WV-3 images. We work with a total of seven SWIR WV-3 images covering four different areas in Algeria, Turkmenistan North and Turkmenistan South (both methane hotspot regions located near the shores of the Caspian Sea, in western Turkmenistan), and China. In the case of Algeria, two images of 25 km<sup>2</sup> area each belonging to the Hassi Messaoud Oil field have been processed, the eastern one was acquired on the 29<sup>th</sup> December 2020, and the western one was acquired on the 17<sup>th</sup> January 2021. The image in Turkmenistan North corresponds to the Goturdepe O&G extraction field, where two images of 50 km<sup>2</sup> each have been acquired on the 10<sup>th</sup> April 2021 (Eastern area) and on the 29<sup>th</sup> March 2021 (Western area). The Turkmenistan South site (near the mud volcanoes area) contains the Korpezhe O&G field, where two more images of 50 km<sup>2</sup> each have been acquired on the 29<sup>th</sup> March 2021 for both eastern and western areas. Finally, we present an image of the Shanxi coal mines in China (west of the Zhangze reservoir) that covers an area of 25 km<sup>2</sup> and was tasked for acquisition on the 27<sup>th</sup> April 2021.

All of these areas correspond to known regional methane hotspots where TROPOMI commonly detects substantial methane concentration enhancements (Lauvaux et al., 2021) but without succeeding in detecting the sources due to their moderate resolution.

Our results with WV-3 reveal the precise locations of 26 different point source emissions (listed in Table 1) over the total area of 275 km<sup>2</sup> analyzed. Accurate coordinates of each point source are provided thanks to the high spatial resolution of WV-3 SWIR images and, in combination with the Google Earth imagery (<2.5 m/pix), that provides enough information to determine the underlying infrastructure responsible for the emission. From the calculation of the IME, we derived the Q values estimated for all plumes as presented in subsection 2.3. The plumes presented here range from the 30 kg/h emission flux rate and 50 m length plume detected in Turkmenistan North (Western image) to the massive emission flux rate of 35000 kg/h extending up 2 km in Turkmenistan North (Eastern image).

**Table 1. List with the disaggregate information for the 26 methane plume locations found, here grouped in 21 estimated Q flux rate. By order: “Site” refers to the name of the production field, “Emitter location” refers to the coordinates of the detected emitting points, “Date” is the image acquisition day, “n°pix” is the number of pixels enclosed by the plume mask, “L” the longitude of the plume, “u<sub>10</sub>” and u<sub>eff</sub>” the local 10-m and the effective wind speeds, “IME” the total sum of the methane concentration pixels, and “Q” the estimated emission flux rate for each single or grouped plume.**

| Site   | Emitter location   | Date       | n°pix | L (m) | u <sub>10</sub> (m/s) | u <sub>eff</sub> (m/s) | IME (kg) | Q (kg/h)      |
|--|--|------------|-------|-------|-----------------------|------------------------|----------|---------------|
| Hassi Messaoud<br>Oil field (Algeria)                        | Pipeline (31.778°N, 5.995°E)                                   | 2020/12/29 | 3363  | 215   | 6.14                  | 2.53                   | 74       | 3100 ± 1300   |
|  | Pipeline (31.768°N, 6.000°E)                                   |            | 3155  | 208   |                       |                        | 57       | 2500 ± 1000   |
|  | Pipeline (31.797°N, 6.011°E)                                   | 2021/01/17 | 924   | 112   | 2.37                  | 0.66                   | 13       | 500 ± 200     |
|  | Pipeline (31.742°N, 5.895°E)                                   |            | 1846  | 159   |                       |                        | 41       | 600 ± 100     |
| Korpezhe O&G<br>field<br>(Turkmenistan<br>South)             | Ground Flare (38.494°N, 54.198°E)                              | 2021/03/29 | 16956 | 482   | 3.93                  | 1.78                   | 1353     | 13000 ± 4800* |
|  | Ground Flare (38.557°N, 54.200°E)                              |            | 13188 | 425   |                       |                        | 287      | 3100 ± 1100*  |
| Goturdepe field<br>(Turkmenistan<br>North); Eastern<br>image | Pipeline (39.474°N, 53.743°E)                                  | 2021/04/10 | 20786 | 533   | 9.63                  | 3.71                   | 1390     | 35000 ± 15000 |
|  | Pipeline (39.462°N, 53.775°E)                                  |            | 7424  | 319   |                       |                        | 118      | 5000 ± 2200   |
| Goturdepe field<br>(Turkmenistan<br>North); Western<br>image | Two-point emitters (39.498°N,<br>53.636°E & 39.497°N 53.638°E) | 2021/03/29 | 44689 | 782   | 1.84                  | 1.07                   | 496      | 2400 ± 700    |
|  | Four plumes around (39.485°N,<br>53.663°E)                     |            | 8900  | 349   |                       |                        | 105      | 1200 ± 300    |

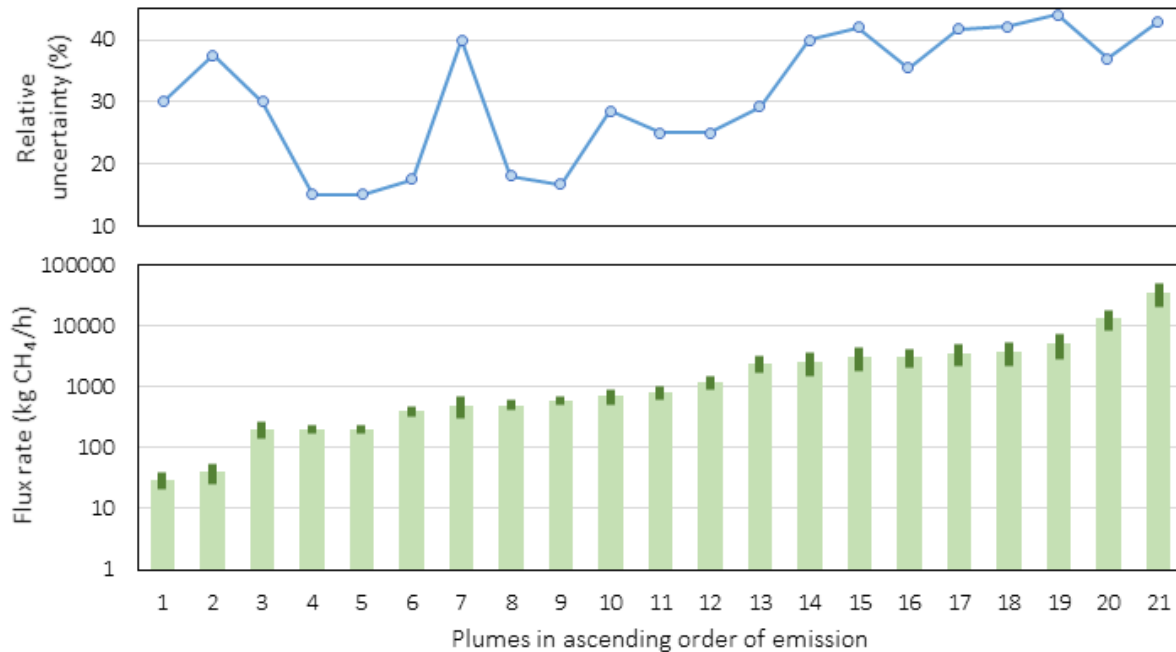


|                              |  |            |      |     |      |      |     |             |
|------------------------------|--|------------|------|-----|------|------|-----|-------------|
|                              | Pipeline (39.480°N, 53.671°E)  |            | 3957 | 233 |      |      | 11  | 200 ± 60    |
|                              | Two small plumes around (39.480°N, 53.671°E)                                     |            | 185  | 50  |      |      | 0.8 | 30 ± 10     |
|                              |  |            | 198  | 52  |      |      | 0.9 | 40 ± 20     |
|                              |  |            | 116  | 40  |      |      | 3   | 200 ± 30    |
|                              |  |            | 105  | 38  |      | 0.6  | 3   | 200 ± 30    |
|                              |  |            | 537  | 86  |      |      | 14  | 400 ± 70    |
|                              | Five smaller southern plumes around (39.469°N, 53.649°E)                         |            | 1842 | 159 |      |      | 61  | 800 ± 200   |
|                              |  |            | 1020 | 118 |      |      | 27  | 500 ± 90    |
|                              |  |            | 6470 | 298 |      |      | 129 | 3800 ± 1600 |
| Coal mines in Shanxi (China) | Wangzhuang Beili two-point emitters (36.247°N, 112.989°E & 36.246°N, 112.989°E). | 2021/04/27 | 7042 | 310 | 5.89 | 1.09 | 126 | 3600 ± 1500 |
|                              | Taoyuancun (36.234°N, 112.946°E)   |            | 1278 | 132 |      | 2.44 | 24  | 700 ± 200   |

\* The flux rate  $Q$  on these two methane plumes is computed considering half IME and half of the number of pixels due to the particular dual-plume structure caused by the angular configuration for that day (see Fig. 11).

Each flux rate  $Q$  in Table 1 incorporates an attached uncertainty  $k=1$  which is the result of the Monte Carlo propagation formalism described in subsection 2.3. These uncertainties cover a range of 15 to 45% which is a substantially lower figure compared to other missions such as PRISMA (Guanter et al. 2021). The main factor of disagreement resides in the different slope values of the  $U_{10}$ - $U_{\text{eff}}$  relationship applied to plumes with  $L$  lower than 200 m. The slope associated to PRISMA is 0.34, whereas the simulations for WV-3 result in a slope of just 0.12 (see Eq. (4)). The uncertainty of  $U_{10}$  is, at the moment, the dominant uncertainty source and, thus, the lower slope coefficient for WV-3 contributes to the lower  $Q$  uncertainty.

The fact that  $U_{\text{eff}}$  (or  $U_{10}$ ) represents the dominant source of uncertainty is studied in Figure 10. It shows the sorted  $Q$  values in ascending order at the bottom panel with the associated relative uncertainty for each plume at the top panel. The figure captures an uncertainty trend associated to the  $Q$  level with a small correlation of 0.45. The same ordering methodology has been replicated for the IME and  $U_{\text{eff}}$  values. The results showed a weak correlation of the  $Q$  uncertainty with the IME value (~0.15) and a high correlation (~0.85) of the  $Q$  uncertainty with the  $U_{\text{eff}}$ .



350 **Figure 10. Distribution of emission rates in ascending order for the 21 estimated Q flux rates listed in Table 1, which correspond to the 26 single methane plumes detected with WV-3. The bars at the bottom panel for each Q (the axis is in logarithmic scale) enclosed at its upper end the corresponding  $\pm\sigma$  value displayed by thinner and darker bars. Top panel shows the relative uncertainty in % for each associated emission of the bottom panel.**

355 Figures 11-15 showcase the methane plumes listed in Table 1 as part of the retrieved methane enhancement maps of the studied areas. In some cases, the methane plumes have been cropped and the WV-3 SWIR B1 band has been integrated as a background scene for visual identification of the underlying infrastructure. Figure 11 displays the  $\Delta XCH_4$  map from Turkmenistan South on 29<sup>th</sup> March 2021 at the left panel. This map includes two plumes that are zoomed in and displayed with the WV-3 SWIR B1 background. These two methane plumes present a particular shape as a consequence of the orthogonal alignment of the

360 sun-to-satellite plane with respect to the wind direction (Figure 11 includes a schema of the angular configuration). This particular angular configuration enhances the parallax effect introduced by the plume at a certain height and is translated into two different plume projections (sun and surface reflected paths) that are clearly visible in the panel b) from Figure 11. This example is similar to the dual-plume structure described in Borchardt et al. (2021) for AVIRIS-NG and comes to reinforce the importance of geometric considerations for high-spatial methane quantification. Furthermore, the particular angle

365 configuration in Figure 11 also enhances the effect of soil morphology visible throughout the entire  $\Delta XCH_4$  map as a NW-SE streak noise pattern. Despite the geometric and soil morphology effects, both emission sources are easily distinguished by the high  $\Delta XCH_4$  values and the unmistakable diffuse shape of the tail downwind. These two emitter points have already been registered by Irakulis-Loitxate et al. (2022). The massive southern plume extends up to 3 km as shown in the enhancement

map b) -white box in the left panel. However, the retrieved mask used to calculate the IME and associated flux rate  $Q$  only takes the most integral part of the plume as the zoomed map in panel b) shows. Moreover, because of the parallax effect, only half of each plume mask would be considered for flux rate  $Q$  estimates. This plume emerges from a gas pipeline near the compressor station already reported by Varon et al. (2019; 2021); and Irakulis-Loitxate et al. (2022). Despite the first announcement in Varon et al. (2019) and subsequent shutdown of the leak, it is here shown that this emitter source is once again spreading methane to the atmosphere. On the North area of the left panel in Fig. 11, another plume with a flux rate four times smaller is also detected. Both points are classified as O&G ground flare emitters that are often used in the burning of gaseous waste and whose installation is distinguishable on the images.

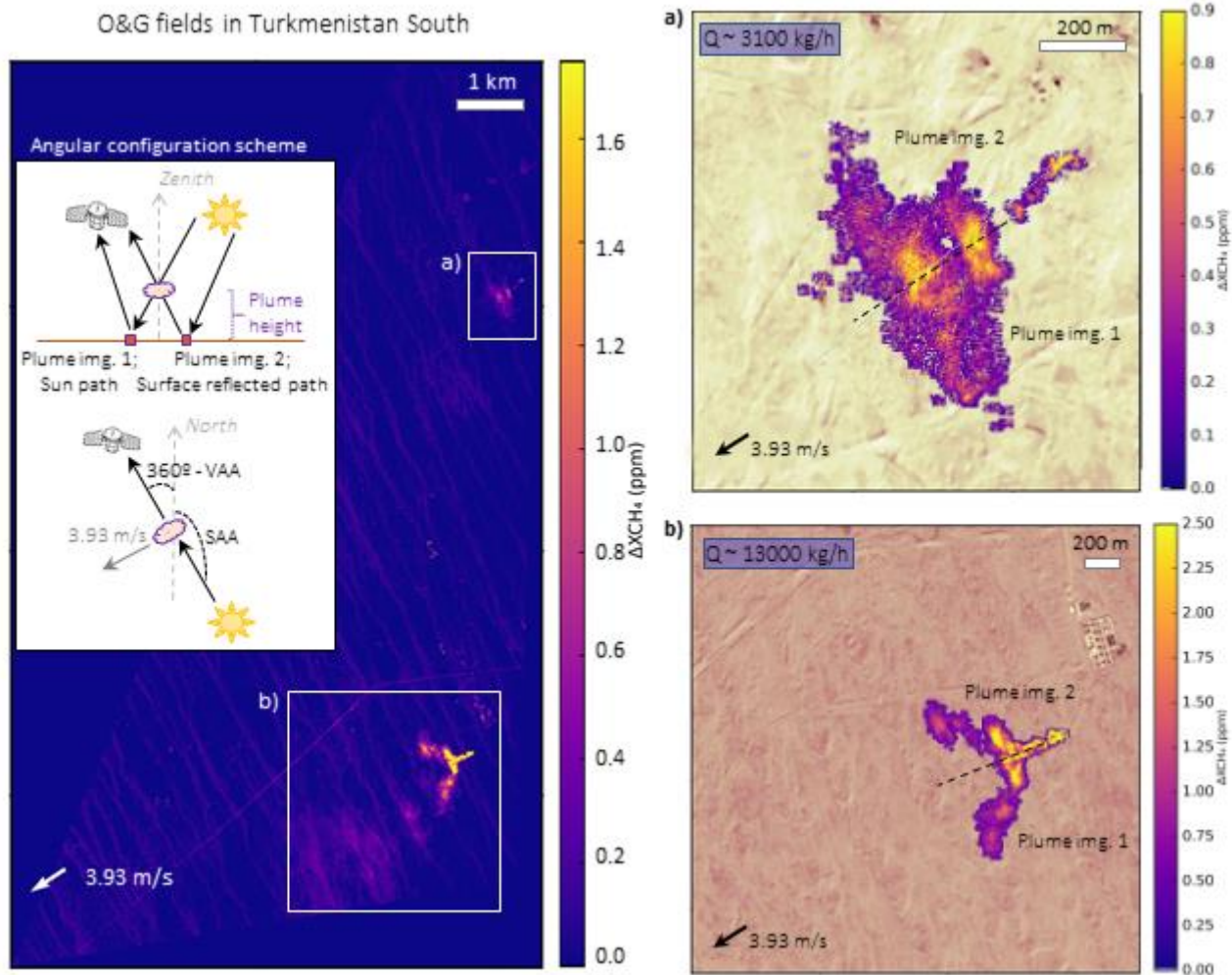


Figure 11.  $\Delta XCH_4$  map produced from the real image of Turkmenistan South; Korppezhe O&G field on 2021/03/29 where two emissions are detected following a particular dual-plume structure consequence of the angular configuration on that day shown in the left diagram. Zoom panels on the right show the plumes over band 1 of the © WV-3 SWIR image used as a background. The

plumes in a) and b) comes from two different ground flares located respectively in coordinates 38.557° N, 54.200° E; and 38.494° N, 54.198° E.

The area with the largest number of emitters in this study corresponds to the Goturdepe O&G field and is located in the North of Turkmenistan. A total of 16 different plumes are detected throughout this basin, one of the oldest oil piping systems in  
385 Turkmenistan. The top panel in Fig. 12 shows the methane enhancement map for the Eastern image on 10<sup>th</sup> April 2021. Two elongated plumes (consequence of strong wind; see Table 1) are highlighted in the image inside a white rectangular box. The plumes originate from two-point sources -registered also in Irakulis-Loitxate et al. (2022)- where the dark color of the soil in the 2021 Google Earth RGBs images indicate that oil burning works are taking place in the area. The biggest plume (Fig. 12a) emerges from a thin pipeline coming out of the oil power plant adjoining. The origin of the other plume (Fig. 12b) is not so  
390 obvious but is likely caused by leakage from the piping system affecting the area.

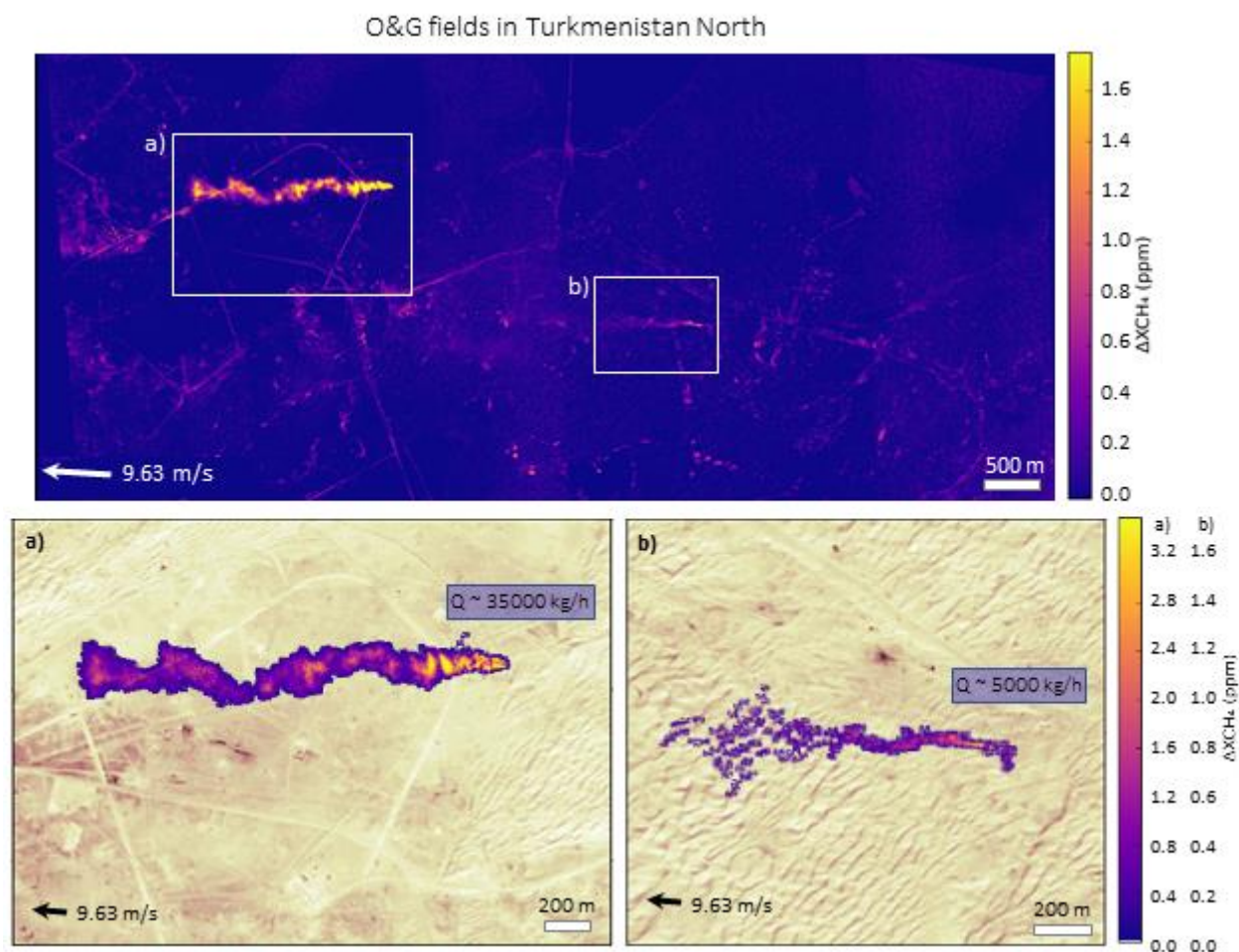
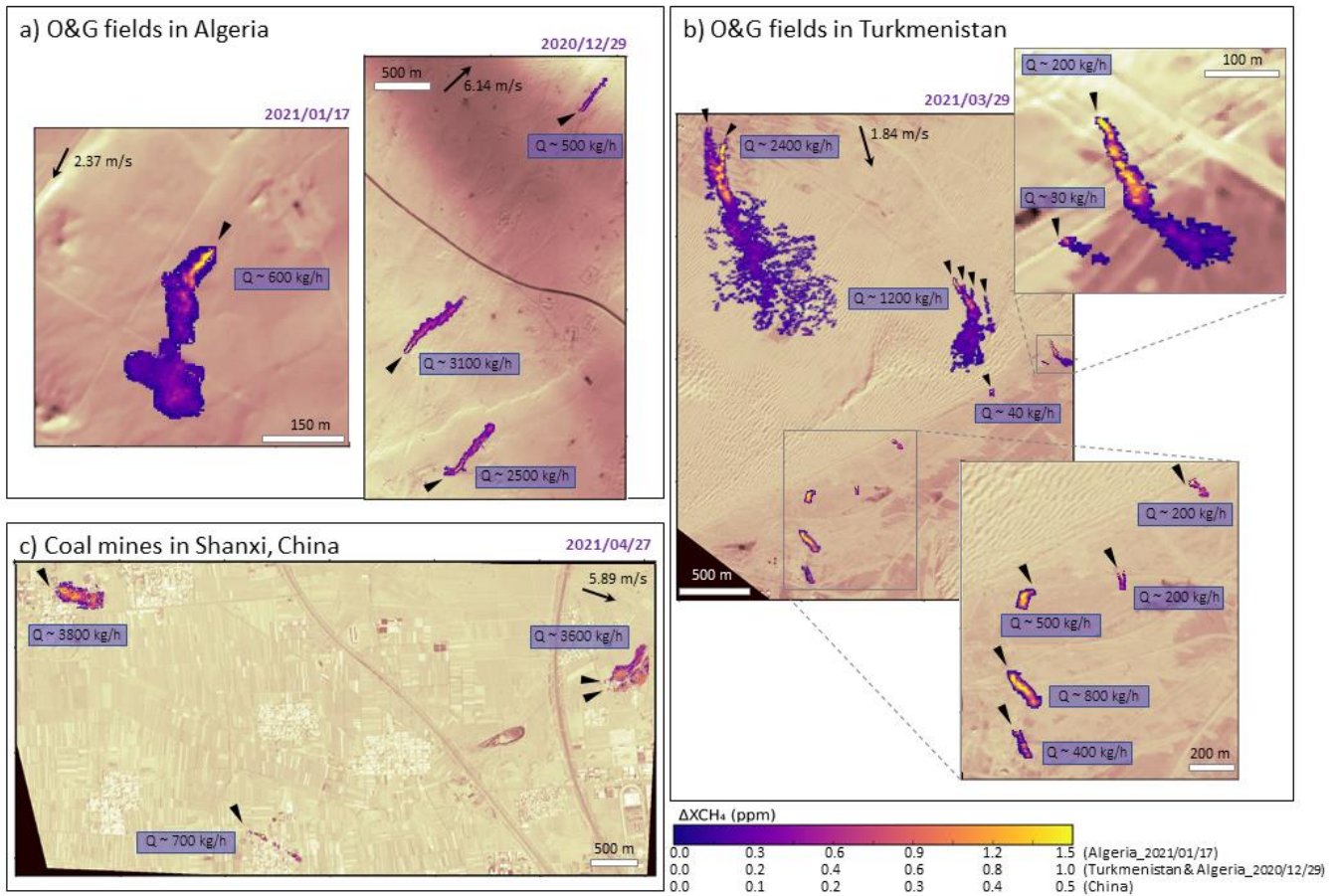


Figure 12.  $\Delta X_{CH_4}$  map produced from the real image of Turkmenistan North (Eastern image); Goturdepe field on 2021/04/10 where two emissions are detected. Zoom panels show the plumes over band 1 of the © WV-3 SWIR image used as a background. The

395 plumes in a) and b) comes from two different pipelines located respectively in coordinates 39.474° N, 53.743° E; and 39.462°N, 53.775°E.

The image covering the latter area of the North of Turkmenistan on 29<sup>th</sup> March 2021 is perhaps the most interesting one because of the number of small methane leakages that WV-3 has been able to reveal (see Fig. 13b). Looking at first glance at the  $\Delta XCH_4$  map, an apparent single plume at the well-known point northwest of the image (Irakulis-Loitxate et al., 2022) can be  
400 glimpsed, as well as another plume towards the center of the image. However, by zooming in closer and considering the wind direction on that day, it has been possible to disentangle each of the underlying and independent emitting points for each case and even unfolding those principal sources. For example, observing this apparent first northwest plume near coordinates 39.498° N, 53.636° E it is found just a few meters away, a second emitter point at the northern end of the same pipeline where a ground flare is perceived. WV-3 data makes it possible to clearly attribute these two emitting points to separate pieces of  
405 infrastructure, even if their tails intertwine later downwind. The same occurs with the plume seen towards the image center near coordinates 39.485° N, 53.663° E. This plume is in fact subdivided into four sources from different leakage points along an oil pipeline, shown zoomed-in in Fig. 14. Following its route to the south-east, we come across other methane plumes and quite a few smaller ones among the pipeline crossings to the south up to 50 m in length and a flux rate Q of about 30 kg/h.

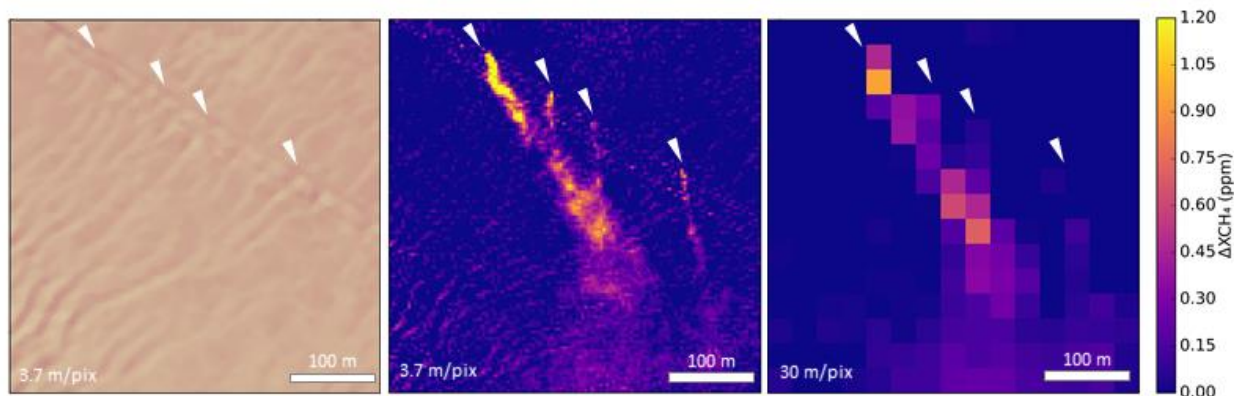


410 Figure 13.  $\Delta XCH_4$  maps from plumes detected in real WV-3 images acquired in three different parts of the world. a) Emitters from  
Hassi Messaoud Oil field in Algeria on 2021/01/17 (Pipeline: 31.742° N, 5.895° E), and on 2020/12/29 (Pipelines from left to right  
located in 31.778° N, 5.995° E; 31.768° N, 6.000° E; and 31.797° N, 6.011° E; detailed in Fig. 15). b) Emitters from Goturdepe O&G  
415 field in Turkmenistan North on 2021/03/29 with 14 plumes located along the pipelines: two-point source emitters NW of the image  
(39.498° N, 53.636° E and 39.497° N, 53.638° E); four plumes around 39.485° N, 53.663° E (detailed in Fig. 14); those further East  
zoomed around 39.480° N, 53.671° E; and the smaller southern in the surrounding of 39.469° N, 53.649° E. c) Emitters from Coal  
mines in Shanxi China on 2021/04/27 from left to right: Xiligaocun (36.2574° N, 112.9227° E); Taoyuancun (36.2337° N, 112.9458°  
E), Wangzhuang Beili two-point source emitters (36.2470° N, 112.9886° E and 36.2461° N, 112.9894° E). Band 1 of the © WV-3  
SWIR images is used as a background.

Some of the small leaks illustrated in Fig. 13b would go unnoticed by most satellites with lower spatial resolution and worse  
420 specifications for methane detection. Particularly those small plumes registered in the grey box area of roughly one square  
kilometer at the bottom right of the image.

Figure 14 exemplifies this fact by upsampling the real image from 3.7 m/pix to 30 m/pix and showing how the different point  
leakages would not be identified at coarser resolution and would be subsequently registered as a single plume instead of four

independent sources. The ability to precisely locate and identify these emitting points could help steer the decision-making process for repairing such pipeline leaks, delivering strong environmental and socioeconomic impacts.



**Figure 14. Detailed example for Turkmenistan North; Goturdepe O&G field on 2021/03/29 where four plumes are seen coming out of a pipeline around 39.485° N, 53.663° E (zoom of Fig. 13b). Left panel uses Band 1 of the © WV-3 SWIR images as a background.**

Regarding the image in Algeria on the 29<sup>th</sup> December 2020, despite optimal surface conditions, the results show a radiance jump around the middle of the image, as it was already discussed in section 3.1. This typically occurs when the WV-3 mission acquires the product with overlapping scans, each with small differences (e.g., viewing geometry). Despite its relatively narrow swath of 13.1 km, it incorporates an agile pointing system capable of collecting stacked stripes at different scans over the same area. In order to overcome this issue, the methane retrieval was processed separately for each part of the image. Figure 15 shows the resulting methane enhancement map where the visual results have clearly improved and just a residual effect at the fringes of the transition area. On this day three elongated plumes emerging from different pipelines are almost perfectly aligned with wind direction, and with emission concentration values steadily decreasing due to the relatively high wind speed (6.14 m/s). This high wind speed produces a fast dispersion of the plume at about 500 m travel, blurring until the plume tail disappears. On the contrary, on days with low wind speeds (2.37 m/s) as it happens on the 17<sup>th</sup> January 2021 (see example in Fig. 13a), the high concentrations of the gas remain concentrated near the emitting point defining a shorter plume.

To further demonstrate the value of methane plume detection at 3.7 m pixel resolution, Fig. 15 shows the  $\Delta XCH_4$  map obtained from the Algeria image on 29<sup>th</sup> December 2020 (see isolated plumes in Fig. 13a) and compares it with this same result but upsampled to 30 m resolution similarly to Fig. 14. With this coarser resolution, apart from blurring the emitter point, the plumes become more difficult to define, especially the smaller one, which is easily confused amid the background noise.

445

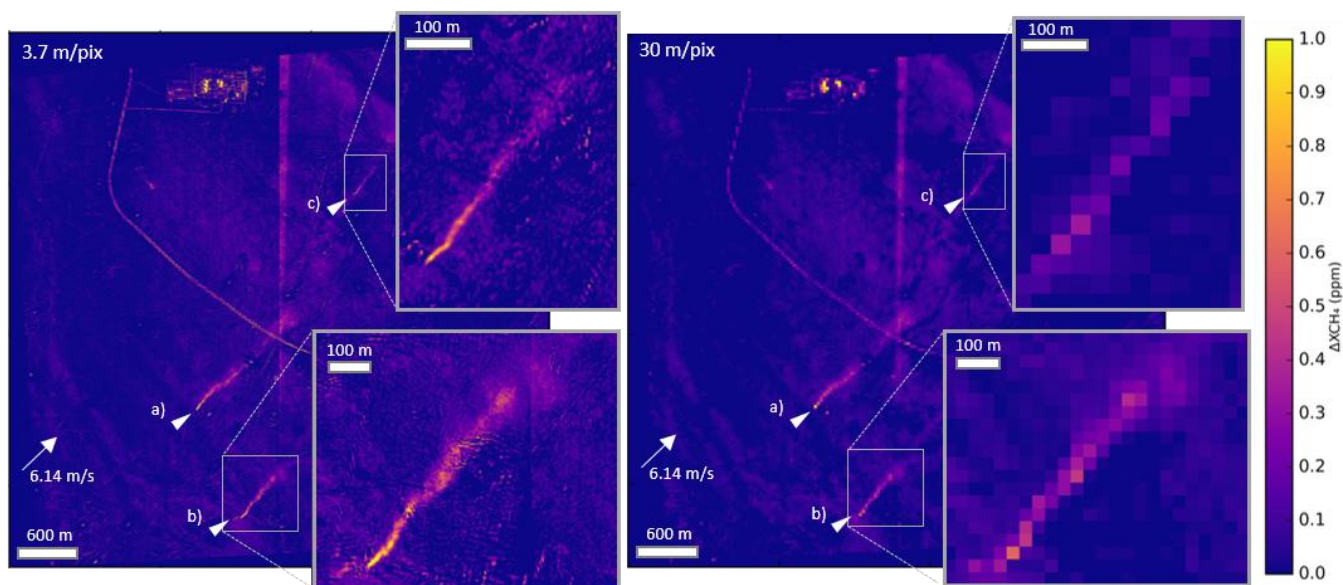


Figure 15.  $\Delta XCH_4$  map for the image on 2020/12/29 over Algeria; Hassi Messaoud Oil field. Methane emissions from pipelines in a) ( $31.778^\circ N$ ,  $5.995^\circ E$ ), b) ( $31.768^\circ N$ ,  $6.000^\circ E$ ) and c) ( $31.797^\circ N$ ,  $6.011^\circ E$ ) locations; the latter two zoomed. Left panel corresponds to the  $\Delta XCH_4$  map derived from the real WV-3 image (3.7 m/pixel) while the right panel shows the same map but resampled to 30 m resolution.

450

Moreover, the high spatial resolution of WV-3 has not only been helpful to identify small sources of methane emissions but also to detect outliers. Based on the idea that a methane plume in the atmosphere is characterized by soft edges, whereas the presence of other features such as buildings and roads typically result in sharp edges, it has been possible to apply feature detection techniques as described in subsection 2.2.

#### 455 4 Summary and outlook

This study reveals the previously undocumented capability of WV-3 for mapping methane point source emissions at very high spatial resolution. The retrieval methodology is based on the MLR of 6 SWIR bands with low sensitivity to methane absorption against B7 (2235-2285 nm), which is positioned at a highly-sensitive methane absorption region. The ratio between the original B7 band and the band obtained through the regression results in an estimated methane plume transmittance that links to the column-averaged mixing ratio ( $\Delta XCH_4$ ). The study found a weak sensitivity of the methane retrieval to the SRF of B7 and a negligible effect to the atmospheric water vapor column. Although WV-3 B8 (2295-2365 nm) is at a stronger methane absorption position than the rest of the bands, our methodology proved to retrieve better results using B7 as a reference due to its higher spectral correlation with the rest of the SWIR bands.

460



The unprecedented spatial resolution of WV-3 combined with its high-quality spectral configuration and relatively low noise  
465 enables the detection of even smaller plumes than detected by hyperspectral missions (~30 m pixel resolution) and other  
multispectral missions such as S2 (20 m pixels). Furthermore, this mission includes unique pointing capabilities which can  
optimize acquisition over O&G fields by tracking directly over suspected areas of point emitters with a daily revisit or better  
(E. S. Imaging, 2020).

The resulting  $\Delta XCH_4$  maps obtained with our methane retrieval from WV-3 SWIR images have identified different  
470 uncontrolled gas leaks in two different O&G extraction regions in Turkmenistan and Algeria, which in some cases come  
directly from the production facilities and in others are due to ruptures of the natural gas pipelines, and some emissions in the  
Shanxi coal mining region in China. The precise detection and identification of these emitters enables direct action to mitigate  
them. Our results show how we can pinpoint small emissions along oil pipelines (<100 kg/h) as shown in Fig. 13 and Fig. 14  
for a 10-m wind speed of 1.84 m/s, illustrating the unique capability of WV-3 for methane mapping from space. WV-3 has a  
475 superior detection limit to other multispectral satellite missions, comparable in some cases to airborne spectrometers.

The end-to-end sensitivity analysis of the methane retrieval with WV-3 and for a mean wind speed of 3.5 m/s, has shown  
excellent results over homogeneous surfaces. The IME loss for methane sources over an O&G extraction region in Algeria  
was as low as ~20 Kg (22% loss for a flux rate of 1000 kg/h). For highly heterogeneous areas such as the scene in Shanxi,  
China, larger fractions of the IME can be lost (up to 61%, or ~54 Kg for a flux rate of 1000 kg/h). In terms of detection  
480 thresholds, these results for a 3.5 m/s wind speed indicate that a flux rate of 200-300 kg/h can be detected over sites such as  
Algeria and Turkmenistan, and rising to ~600 kg/h for the site in China.

Despite the promising results shown in this first assessment of WV-3 for monitoring and quantifying methane plumes, further  
work is needed to diminish the impact of the surface background and the plume parallax effects on the derived methane  
concentration enhancement maps. The former issue is shared with other missions, but in the case of WV-3 it becomes critical  
485 due to the higher variability of the surface at 3.7 m sampling and its orbit pointing capabilities that can result in large viewing  
zenith angles. The latter issue is enhanced at angular configurations such as the one presented in the example of the Korpezhe  
O&G field in Fig. 11. In the case of the plume parallax effect, 3-D information about the plume structure is needed to estimate  
a path at a pixel-level that supports a more accurate quantification. The surface variability could be mitigated if further  
development of the retrieval includes knowledge of the surface local angle information (e.g., through a high spatial resolution  
490 Digital Elevation Model). In addition to the SWIR bands, the WV-3 mission also images the VNIR TOA radiance with 1.24  
m spatial resolution at nadir. A combination of the SWIR images with this VNIR data could improve both the regression and  
the identification of emission infrastructure. Moreover, both the simulations and real cases investigated here are for an  
acquisition period between October 2020 and April 2021 characterized by a lower SZA around the winter solstice in the

Northern Hemisphere. Thus, it is expected that the potential of plume detection could increase if acquisitions around the  
495 summer solstice and Northern Hemisphere were considered (e.g., due to better SNR and lower shadowing).

In summary, the unique configuration of the WV-3 mission can substantially benefit current mapping efforts with a positive impact on the definition of a future methane observing system as proposed by recent EU regulations (COM, 2020). Very high-resolution satellite observations of methane point sources as from WV-3 could play an integral role in future near-real time emission detection service.

#### 500 **Author contributions**

ESG, JG, IIL and LG contributed to the study conceptualisation. JG implemented the source retrieval algorithms and methane plume simulations. ESG produced the sensitivity analysis and site studies. DJV produced large eddy simulations and supported the quantification of the methane emissions. ESG and JG wrote the original draft and all authors reviewed and edited the manuscript.

#### 505 **Acknowledgements**

First, we would like to thank the European Space Agency and European Space Imaging for the access to the WV-3 data through the Third-Party Missions scheme. We personally thank Silvester Fischer and Thierry Buettel from European Space Imaging for their assistance in the product details and processing. We thank Daniel Cusworth (JPL) for the access to realistic methane plume simulations with WRF-LES. Javier Gorroño is funded by the ESA Living Planet Fellowship. Authors Elena Sánchez-  
510 García, Javier Gorroño, Itziar Irakulis-Loitxate, and Luis Guanter received funding from ESA Contract 4000134929. Last but not least we thank the referees, V. Savastiouk and K.F. Boersma, for their useful comments.

#### **Competing interests**

The authors declare that they have no conflict of interest.

#### 515 **Data availability**

The data are available from the author upon request.

#### **References**

Borchardt, J., Gerilowski, K., Krautwurst, S., Bovensmann, H., Thorpe, A. K., Thompson, D. R., Frankenberg, C., Miller, C.

- 520 E., Duren, R. M. and Burrows, J. P.: Detection and quantification of CH<sub>4</sub> plumes using the WFM-DOAS retrieval on AVIRIS-NG hyperspectral data, *Atmos. Meas. Tech.*, 14(2), 1267–1291, doi:10.5194/amt-14-1267-2021, 2021.
- Cusworth, D. H., Jacob, D. J., Varon, D. J., Chan Miller, C., Liu, X., Chance, K., Thorpe, A. K., Duren, R. M., Miller, C. E., Thompson, D. R., Frankenberg, C., Guanter, L. and Randles, C. A.: Potential of next-generation imaging spectrometers to detect and quantify methane point sources from space, *Atmos. Meas. Tech.*, 12(10), 5655–5668, doi:10.5194/amt-12-5655-2019, 2019.
- 525 Cusworth, D. H., Duren, R. M., Thorpe, A. K., Tseng, E., Thompson, D., Guha, A., Newman, S., Foster, K. T. and Miller, C. E.: Using remote sensing to detect, validate, and quantify methane emissions from California solid waste operations, *Environ. Res. Lett.*, 15(5), doi:10.1088/1748-9326/ab7b99, 2020.
- Cusworth, D. H., Duren, R. M., Thorpe, A. K., Olson-duvall, W., Heckler, J., Chapman, J. W., Eastwood, M. L., Helmlinger, M. C., Green, R. O., Asner, G. P., Dennison, P. E. and Miller, C. E.: Intermittency of Large Methane Emitters in the Permian Basin, , doi:10.1021/acs.estlett.1c00173, 2021.
- 530 Duren, R. M., Thorpe, A. K., Foster, K. T., Rafiq, T., Hopkins, F. M., Yadav, V., Bue, B. D., Thompson, D. R., Conley, S., Colombi, N. K., Frankenberg, C., McCubbin, I. B., Eastwood, M. L., Falk, M., Herner, J. D., Croes, B. E., Green, R. O. and Miller, C. E.: California’s methane super-emitters, *Nature*, 575(7781), 180–184, doi:10.1038/s41586-019-1720-3, 2019.
- 535 E. S. Imaging: Worldview-3 datasheet. [online] Available from: <https://www.euspaceimaging.com/worldview-3/>, 2020.
- European Commission, C.: Communication from the commission to the european parliament, the council, the european economic and social committee and the committee of the regions., 2020.
- Frankenberg, C., Thorpe, A. K., Thompson, D. R., Hulley, G., Kort, E. A., Vance, N., Borchardt, J., Krings, T., Gerilowski, K., Sweeney, C., Conley, S., Bue, B. D., Aubrey, A. D., Hook, S. and Green, R. O.: Airborne methane remote measurements reveal heavytail flux distribution in Four Corners region, *Proc. Natl. Acad. Sci. U. S. A.*, 113(35), 9734–9739, doi:10.1073/pnas.1605617113, 2016.
- 540 Gouw, J. A. De, Vee, J. P., Roosenbrand, E., Dix, B., Lin, J. C., Landgraf, J. and Levelt, P. F.: Daily Satellite Observations of Methane from Oil and Gas Production Regions in the United States, *Sci. Rep.*, 1–10, doi:10.1038/s41598-020-57678-4, 2020.
- Guanter, L., Irakulis-Loitxate, I., Gorroño, J., Sánchez-García, E., Cusworth, D. H., Varon, D. J., Cogliati, S. and Colombo, R.: Mapping methane point emissions with the PRISMA spaceborne imaging spectrometer, *Remote Sens. Environ.*, 265, 112671, doi:10.1016/j.rse.2021.112671, 2021.
- 545 Hu, H., Landgraf, J., Detmers, R., Borsdorff, T., Aan de Brugh, J., Aben, I., Butz, A. and Hasekamp, O.: Toward Global Mapping of Methane With TROPOMI: First Results and Intersatellite Comparison to GOSAT, *Geophys. Res. Lett.*, 45(8), 3682–3689, doi:10.1002/2018GL077259, 2018.
- 550 Irakulis-Loitxate, I., Guanter, L., Liu, Y. N., Varon, D. J., Maasackers, J. D., Zhang, Y., Chulakadabba, A., Wofsy, S. C., Thorpe, A. K., Duren, R. M., Frankenberg, C., Lyon, D. R., Hmiel, B., Cusworth, D. H., Zhang, Y., Segl, K., Gorroño, J., Sánchez-García, E., Sulprizio, M. P., Cao, K., Zhu, H., Liang, J., Li, X., Aben, I. and Jacob, D. J.: Satellite-based survey of extreme methane emissions in the Permian basin, *Sci. Adv.*, 7(27), doi:10.1126/sciadv.abf4507, 2021.
- 555 Irakulis-Loitxate, I., Guanter, L., Maasackers, J. D., Zavala-Araiza, D. and Aben, I.: Satellites Detect Abatable Super-Emissions in One of the World’s Largest Methane Hotspot Regions, *Environmental Science & Technology*, doi:<https://doi.org/10.31223/X56G7R>, 2022.
- Jackson, R. B., Saunio, M., Bousquet, P., Canadell, J. G., Poulter, B. and Bergamaschi: Increasing anthropogenic methane

emissions arise equally from agricultural and fossil fuel sources OPEN ACCESS Increasing anthropogenic methane emissions arise equally from agricultural and fossil fuel sources, 2020.

- 560 Jacob, D. J., Turner, A. J., Maasackers, J. D., Sheng, J., Sun, K., Liu, X., Chance, K., Aben, I., McKeever, J. and Frankenberg, C.: Satellite observations of atmospheric methane and their value for quantifying methane emissions, *Atmos. Chem. Phys.*, 16(22), 14371–14396, doi:10.5194/acp-16-14371-2016, 2016.

JCGM: Evaluation of measurement data — Supplement 1 to the “Guide to the expression of uncertainty in measurement” — Propagation of distributions using a Monte Carlo method, in JCGM guidance document, vol. JCGM 101, p. 90., 2008.

- 565 Jervis, D., McKeever, J., Durak, B. O. A., Sloan, J. J., Gains, D., Varon, D. J., Ramier, A., Strupler, M., and Tarrant, E.: The GHGSat-D imaging spectrometer, *Atmos. Meas. Tech.*, 14, 2127–2140, <https://doi.org/10.5194/amt-14-2127-2021>, 2021.

Jongaramrungruang, S., Frankenberg, C., Matheou, G., Thorpe, A., Thompson, D. R., Kuai, L. and Duren, R.: Towards accurate methane point-source quantification from high-resolution 2D plume imagery, *Atmos. Meas. Tech. Discuss.*, 1–22, doi:10.5194/amt-2019-173, 2019.

- 570 Kochanov, R. V., Gordon, I. E., Rothman, L. S., Weis, P., Hill, C. and Wilzewski, J. S.: Journal of Quantitative Spectroscopy & Radiative Transfer HITRAN Application Programming Interface ( HAPI ): A comprehensive approach to working with spectroscopic data, , 177, 15–30, doi:10.1016/j.jqsrt.2016.03.005, 2016.

Lauvaux, T., Giron, C., Mazzolini, M., Duren, R., Cusworth, D., Shindell, D. and Ciais, P.: Global Assessment of Oil and Gas Methane Ultra-Emitters, 2021.

- 575 Molod, A., Takacs, L., Suarez, M., Bacmeister, J., Song, I. and Eichmann, A.: NASA / TM – 2012-104606 / Vol 28 Technical Report Series on Global Modeling and Data Assimilation , Volume 28 The GEOS-5 Atmospheric General Circulation Model : Mean Climate and Development from MERRA to Fortuna April 2012., 2012.

Sadavarte, P., Pandey, S., Maasackers, J. D., Lorente, A., Gon, H. D. Van Der, Houweling, S. and Aben, I.: Methane Emissions from Super-emitting Coal Mines in Australia quantified using TROPOMI Satellite Observations, , 1–35, n.d.

- 580 Saunio, M., Stavert, A. R., Poulter, B., Bousquet, P., Canadell, J. G., Jackson, R. B., Raymond, P. A., Dlugokencky, E. J. and Houweling, S.: The Global Methane Budget 2000 – 2017, , 1561–1623, 2020.

Thompson, D. R., Thorpe, A. K., Frankenberg, C., Green, R. O., Duren, R., Guanter, L., Hollstein, A., Middleton, E., Ong, L. and Ungar, S.: Space-based remote imaging spectroscopy of the Aliso Canyon CH<sub>4</sub> superemitter, *Geophys. Res. Lett.*, 43(12), 6571–6578, doi:10.1002/2016GL069079, 2016.

- 585 Thorpe, A. K., Frankenberg, C. and Roberts, D. A.: Retrieval techniques for airborne imaging of methane concentrations using high spatial and moderate spectral resolution: Application to AVIRIS, *Atmos. Meas. Tech.*, 7(2), 491–506, doi:10.5194/amt-7-491-2014, 2014.

Varon, D. J., Jacob, D. J., McKeever, J., Jervis, D., Durak, B. O. A., Xia, Y., Huang, Y. and Varon, C. D. J.: Quantifying methane point sources from fine-scale satellite observations of atmospheric methane plumes, , 5673–5686, 2018.

- 590 Varon, D. J., McKeever, J., Jervis, D., Maasackers, J. D., Pandey, S., Houweling, S., Aben, I., Scarpelli, T. and Jacob, D. J.: Satellite discovery of anomalously large methane point sources from oil/gas production, *Geophys. Res. Lett.*, 2019GL083798, doi:10.1029/2019GL083798, 2019.

Varon, D. J., Jacob, D. J., Jervis, D. and McKeever, J.: Quantifying Time-Averaged Methane Emissions from Individual Coal Mine Vents with GHGSat - D Satellite Observations, , doi:10.1021/acs.est.0c01213, 2020.

595 Varon, D. J., Jervis, D., McKeever, J., Spence, I., Gains, D. and Jacob, D. J.: High-frequency monitoring of anomalous methane point sources with multispectral Sentinel-2 satellite observations, *Atmos. Meas. Tech.*, 14(4), 2771–2785, doi:10.5194/amt-14-2771-2021, 2021.