

Response to reviewer comments

We are sincerely grateful to editor and reviewers for their valuable time spent on reviewing our manuscript. The comments are very helpful and valuable, and we have addressed some issues raised by the reviewers in the revised manuscript. Please find our point-by-point response (in blue font) to the comments (in black font) raised by reviewers.

Reviewer 3

This study aims to integrate remote sensing data with ground-based temperature measurement to predict canopy heat island at a large spatial extent. Overall the idea is interesting, but the data size is very limited and the method seems to be a typical approach. Below are my major comments:

Response: Many thanks for your positive comments. We are very grateful for all the constructive comments and suggestions. We have adopted all the suggestions in our revised manuscript.

1) Line 55, "meteorological measurements and high-density observations", it is not clear what the authors are referring to here. Does it mean rural station against microclimate observations? Please rephrase here.

Response: Thanks for your kind suggestion. Rephrased as follow:

In-situ (field) measurements include conventional measurements from sparse national meteorological stations, and high-density microclimate observations from experiments or high-density automatic sites over various underlying surfaces.

2) Line 104, "'Nanjing's UHI was observed to be 0.5 in 2005". It is important to clarify how the 0.5 is calculated, as it does not contain any spatial variation, and differs from the results in this study.

Response: Thank you for your comments. The previous reference employed the observation data of three weather stations located in the urban area of Nanjing and that of one weather station in rural areas to explore UHI in Nanjing. As Nanjing has been developing rapidly from 2005, the built-up area and population are increasing rapidly, so the canopy urban heat island intensity was increasing accordingly, so our results are higher. For readerships, we have deleted this sentence.

3) Line 110, my major concern about this study is the usage of only 3 snapshots of the satellite measurement. Only 3 days are selected over a 5-yr period from 2013 to 2017. Such data availability is surprising low. On top of this, this performance of RF model is only marginal, with R2 about 0.5 in the cross-validation. How would the authors justify the potential or accuracy of the model in predicting the urban heat island for practical usage, if the model is to be extended to more days under complex weather conditions?

Response: Thank you very much for your constructive comments. The present three snapshots are under clear sky conditions, which is favorable to retrieve the stable input factors such as NDVI, surface albedo, land use, etc, which are similar in one month or even in a season. For more snapshots, the cloud and air pollution effects on retrievals should be amended in the future. The aim of our present work is to propose a refined assessment framework of CUHII was then established by using Random Forest Model with observed AT and environmental variables as a demonstration.

To improve the practicality of the model, we added the discussion of model robustness in line 240 to 249. The random forest models with the hourly air temperature data were modeled in the whole August 2013, September 2015 and July 2017, and figure 7 shows the model accuracy is higher by using more data in one month with respect to one day (Figure 5). Thank you again for help us improve our model. In addition, we also discussed the potential of the model at time scales at lines 452-454.

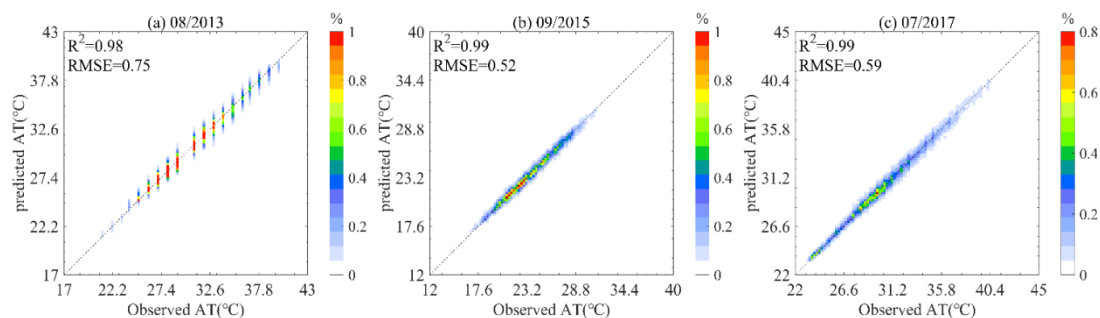


Figure 7: Scatterplot of predicted and observed air temperature using data in a month five-fold CV for the testing set on (a) August 2013, (b) September 2015 and (c) July 2017.

4) Line 113, what does 0.5 intervals mean?

Response: Thanks for your suggestion. 0.5 °C interval means that the resolution of temperature measurement. We have changed it as following: “with resolution of 0.5°C on 11 August 2013 and 0.1°C on 2 September 2015 and 21 July 2017”

5) Line 124, Does the AHF data vary diurnally and seasonally? If it does not, then the AHF data may be less meaningful to be incorporated into the RF model. Instead of the LULC map, I will suggest authors to add the AHF map here.

Response: Thank you very much for your kind suggestions. The AHF here varied annually. We expect that AHF distribution can shape the main morphology of urban thermal environment. We can not get AHF data at diurnal and seasonal scales. In future, if we got high-temporal-resolution AHF data, we will update them in the model. We have point this limit in lines 128-130. In Figure 1, we have changed the LULC map to the AHF map.

6) Line 150, a table summarizing the predictors with their sources and resolution used

in the RF model will be very useful.

Response: Thank you very much for your kind suggestion, we have added table as following.

Table 1: Independent variables with their sources and spatial resolution

	Parameters	Source	Spatial resolution (m)
geometric parameters	Proportion of LULC area	Landsat 8 data	30
	Latitude and longitude distance from the city center	LULC data	
	Altitude, Slope and aspect	DEM data	
physical parameters	Proportion of IS area	Landsat 8 data	30
	Albedo NDVI, NDBI, gNDVI, SAVI and NDMI		
anthropogenic parameters	AHF data	NOAA nighttime lighting data	1000

Notes: DEM, digital elevation model; IS, impervious surface; NDVI, normalized difference vegetation index; NDBI, normalized difference built-up index; gNDVI, green normalized difference vegetation index; SAVI, soil-adjusted vegetation index; NDMI, normalized difference moisture index; AHF, anthropogenic heat flux.

7) Line 180, Different variables are used on different days, and the optimal Mtry and Ntree also change substantially. This essentially means the built model can only apply for a specific day. Given that the study only focus on Nanjing under clear sky conditions, I am concerned about the applicability of the model. If we utilize this method to study CUHI in the future, that means one will need to run it for every hour, and the accuracy is not guaranteed even under the clear sky condition. What I suggest may be a lot of work, but I think using more models and comparing their performance and come up with a consistently well-perform model is really needed to enhance this paper to a higher quality/level.

Response: Thank you very much for your constructive suggestion. To improve the applicability, we added the discussion of model robustness in lines 235-247 of the revised manuscript which was mentioned in response 3.

We have tried to compare the accuracy of RF model with that of stepwise linear regression and GWR in lines 204- 209 and Table 2. However, stepwise linear regression cannot deal with so much data (44375, 51673 and 53973 samples in three times). Such a large matrix leads to a huge burden on calculations and memory, while RF model can easily avoid the problem by processing samples one by one. Neither stepwise linear regression nor GWR can fit complex data, such as periodicity in time

series data in this study.

In future, we would like to compare different machine learning methods to come up with a consistently well-perform model, e.g., SVM and ANN. We will also use stacking ensemble strategy to combine the advantages of different models and get the best prediction results. We have added this perspective in lines 430-432.

8) Line 197, from my perspective, using a buffer size of 2-km to predict temperature at 30-m resolution is not scientifically sound. As expected, the estimated spatial variability of air temperature/CUHI is small. This contradicts the local climate zone framework that local urban landscape may dominate the air temperature under a similar weather condition. Did the authors check the spatial map of SUHI? I believe the spatial variability of LST will be much larger. I suggest authors add a map of LST and compare it with the estimated CUHI. That can help facilitate the discussions on your model.

Response: Thanks for your suggestions. We have compared the accuracy based on different buffer size in line 195 to 203 of the revised manuscript, showing the best performance at 2000-m buffer size. We also added the LST map of Nanjing in section 4.1 to compare air temperature map with LST map, showing similar distribution at light wind conditions while different distribution in large wind conditions. This is because satellite-derived LST distribution mainly depended on the longwave emissivity related to LULC distribution, while air temperature is not determined by LST but other local meteorological factors (e.g., wind and humidity).

9) Figure 6 and Figure S2, why is the number of stations different in three subplots?

Response: Thanks for your suggestion. Because of the increase and decrease of high-density automatic stations every year, the number and locations are different.

10) Line 406. It is good that authors summarize the existing approach of predicting AT in the literature. Given that RF model is a very typical approach adopted by many studies, what is the novelty of this study? Maybe the authors can elaborate more here.

Response: Thank you for your kind suggestions. We elaborate more novelty in lines 445 -454 of the revised manuscript as followings:

“The RF prediction framework proposed in this work can not only can dynamically predict CUHII in detail and high frequency within highly heterogeneous cities, but also can be built against different weather backgrounds, mainly because the environmental parameters entered into the model are relatively stable within a certain period (such as the same month or season). As long as the environmental parameters are acquired once, they can be combined with the AT data in real time to establish the RF model, and the spatial distribution characteristics of CUHII with high temporal and spatial resolution can be obtained. For instance, we randomly predicted the 30-m-resolution AT and spatial distribution of CUHII (Figure 15) with the wind vector field (Figure S3) during the heat wave period of 12–14 August 2012, thereby supporting those involved in making decisions with respect to urban climate, urban

planning and urban energy consumption. Particularly, the potential that our proposed model can be used cross a short period as most of the environmental parameters fed to the model probably can remain stable for some time, e.g., one month or even longer.
”