

*Supplement of*

## 5 **Empirical model of multiple scattering effect on single-wavelength lidar data of aerosols and clouds.**

Valery Shcherbakov<sup>1,2</sup>, Frédéric Szczap<sup>1</sup>, Alaa Alkasem<sup>1</sup>, Guillaume Mioche<sup>1,2</sup>, Céline Cornet<sup>3</sup>

<sup>1</sup>Université Clermont Auvergne, CNRS, UMR 6016, Laboratoire de Météorologie Physique, 63178 Aubière, France

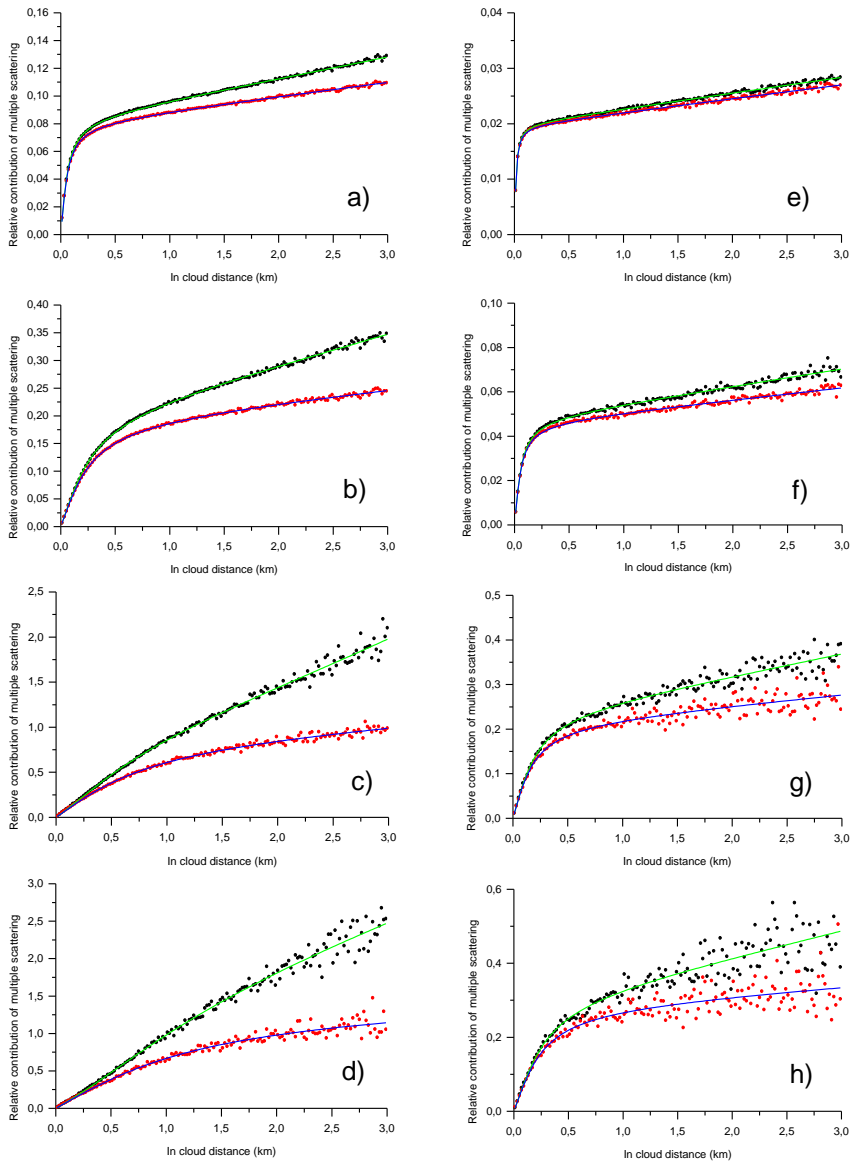
<sup>2</sup>Université Clermont Auvergne, Institut Universitaire de Technologie Clermont Auvergne – site de Montluçon, 03100 Montluçon, France

10 <sup>3</sup>Université Lille 1, CNRS, UMR 8518, Laboratoire d’Optique Atmosphérique, 59655 Villeneuve d’Ascq, France

*Correspondence to:* Valery Shcherbakov (v.shcherbakov@opgc.univ-bpclermont.fr)

Figure S1 shows examples of the multiple-scattering relative contributions to lidar signals, i.e., the ratios  $R_{2to1}$  and  $R_{MSto1}$ . The ground-based lidar is at the altitude  $h=0$  km, the layer is within the altitude  $h$  range of [8 – 11] km. The optical thickness  
15 of the layer is  $\tau = 3.0$ , that is, the extinction coefficient is of  $1.0 \text{ km}^{-1}$ . The distance to the layer base is of 8 km. The number of photons emitted by the lidar was of  $4 \cdot 10^{10}$ . Figures S1(a – d), i.e., the left hand column, correspond to the full RFOV of the lidar of 1.0 mrad. The right hand column, i.e., Figs. S1(e – h) corresponds to the full RFOV of 0.25 mrad. The red and black points represent the MC data, computed for double and multiple scattering, respectively. The MC data were fitted by the  $V(d, \mathbf{a})$  function, that is, we computed the values of the free parameters  $\mathbf{a} = \{a_1, a_2, a_3\}$  using the ordinary least squares  
20 approach. The blue and green lines in Fig. S1 show the fitting curves. It is seen that the empirical model fits well not only the multiple scattering contribution, but also the double-scattering part.

Tables S1 – S8 provide the values of the fitting parameters  $\mathbf{a} = \{a_1, a_2, a_3\}$  for the cases discussed in the paper.



25 **Figure S1.** Double (red points and blue lines) and multiple (black points and green lines) scattering contributions to lidar signals. Full RFOV is of 1.0 mrad (a – d) and of 0.25 mrad (e – h). Coarse-aerosol (a, e), water cloud (b, f), JS cirrus (c, g), Ci cirrus (d, h). Extinction coefficient is of  $1.0 \text{ km}^{-1}$ .

**Table S1.** Fitting coefficients of the empirical model. The distance to the cloud base is of 8 km. RFOV = 1.0 mrad

$\varepsilon_p(h)$ ( $\text{km}^{-1}$ )	Coarse aerosol			Water cloud			Jet-stream cirrus			Ci cirrus		
	$a_1$	$a_2$	$a_3$	$a_1$	$a_2$	$a_3$	$a_1$	$a_2$	$a_3$	$a_1$	$a_2$	$a_3$
0.06							3.47E-02	1.44	4.62E-03	4.19E-02	1.10	6.92E-03
0.20	1.04E-02	18.32	2.08E-03	2.59E-02	4.19	4.42E-03	1.30E-01	1.26	8.77E-03	1.78E-01	0.90	6.10E-03
0.50	2.59E-02	18.11	5.60E-03	6.25E-02	4.27	1.36E-02	2.42E-01	1.60	6.22E-02	3.20E-01	1.11	6.82E-02
1.00	5.13E-02	18.36	1.36E-02	1.20E-01	4.42	3.96E-02	4.53E-01	1.62	1.58E-01	7.54E-01	0.96	1.04E-01

35

**Table S2.** Fitting coefficients of the empirical model. The distance to the cloud base is of 8 km. RFOV = 0.25 mrad

$\varepsilon_p(h)$ ( $\text{km}^{-1}$ )	Coarse aerosol			Water cloud			Jet-stream cirrus			Ci cirrus		
	$a_1$	$a_2$	$a_3$	$a_1$	$a_2$	$a_3$	$a_1$	$a_2$	$a_3$	$a_1$	$a_2$	$a_3$
0.06							8.05E-03	7.11	1.59E-03	1.10E-02	5.12	1.58E-03
0.20	2.54E-03	71.96	4.87E-04	6.16E-03	18.70	1.08E-03	2.90E-02	5.64	3.98E-03	3.78E-02	4.35	4.12E-03
0.50	6.29E-03	71.53	1.29E-03	1.52E-02	17.89	2.83E-03	6.67E-02	6.83	1.50E-02	9.13E-02	4.53	1.38E-02
1.00	1.26E-02	69.76	2.74E-03	2.99E-02	18.55	7.18E-03	1.38E-01	6.11	3.49E-02	1.74E-01	4.50	4.55E-02

40

45 **Table S3.** Fitting coefficients of the empirical model. The distance to the cloud base is of 1 km. RFOV = 1.0 mrad

$\varepsilon_p(h)$ ( $\text{km}^{-1}$ )	Coarse aerosol			Water cloud			Jet-stream cirrus			Ci cirrus		
	$a_1$	$a_2$	$a_3$	$a_1$	$a_2$	$a_3$	$a_1$	$a_2$	$a_3$	$a_1$	$a_2$	$a_3$
0.06							4.26E-03	10.70	5.35E-03	5.21E-03	8.83	6.52E-03
0.20	1.28E-03	128.70	2.03E-03	3.08E-03	40.07	4.65E-03	1.20E-02	16.22	1.96E-02	1.54E-02	12.14	2.28E-02
0.50	3.19E-03	134.31	5.13E-03	7.18E-03	43.85	1.21E-02	3.03E-02	14.19	4.90E-02	3.87E-02	9.55	5.85E-02
1.00	6.28E-03	150.74	1.05E-02	1.38E-02	49.96	2.56E-02	5.69E-02	16.70	1.07E-01	6.62E-02	13.28	1.35E-01

**Table S4.** Fitting coefficients of the empirical model. The distance to the cloud base is of 1 km. RFOV = 0.25 mrad

$\varepsilon_p(h)$ ( $\text{km}^{-1}$ )	Coarse aerosol			Water cloud			Jet-stream cirrus			Ci cirrus		
	$a_1$	$a_2$	$a_3$	$a_1$	$a_2$	$a_3$	$a_1$	$a_2$	$a_3$	$a_1$	$a_2$	$a_3$
0.06							1.20E-03	23.16	1.38E-03	1.53E-03	37.31	1.68E-03
0.20	3.26E-04	357.31	4.77E-04	7.57E-04	171.33	1.13E-03	2.87E-03	124.84	5.42E-03	3.87E-03	63.90	6.37E-03
0.50	7.85E-04	282.96	1.25E-03	1.77E-03	161.66	2.97E-03	8.38E-03	49.51	1.29E-02	1.09E-02	31.88	1.58E-02
1.00	1.54E-03	592.47	2.52E-03	3.53E-03	172.87	5.92E-03	1.61E-02	70.99	2.69E-02	1.88E-02	71.42	3.58E-02

50

55

**Table S5.** Fitting coefficients of the empirical model. The CALIOP configuration.

$\varepsilon_p(h)$ ( $\text{km}^{-1}$ )	Coarse aerosol			Water cloud			Jet-stream cirrus			Ci cirrus		
	$a_1$	$a_2$	$a_3$	$a_1$	$a_2$	$a_3$	$a_1$	$a_2$	$a_3$	$a_1$	$a_2$	$a_3$
0.06							1.01E-02	2.925	4.76E-02	7.50E-03	3.310	4.87E-02
0.20	8.73E-02	2.156	6.51E-03	1.24E-01	0.602	4.17E-02	4.30E-02	1.931	1.51E-01	2.70E-02	3.148	1.56E-01
0.50	2.19E-01	2.087	3.81E-02	3.17E-01	0.524	1.26E-01	8.74E-02	2.234	3.96E-01	5.03E-02	3.382	4.10E-01
1.00	3.63E-01	2.426	1.52E-01	3.94E-01	0.543	4.01E-01	1.47E-01	2.518	8.32E-01	7.40E-02	4.836	8.70E-01

60 **Table S6.** Fitting coefficients of the empirical model. The ATLID configuration.

$\varepsilon_p(h)$ ( $\text{km}^{-1}$ )	Coarse aerosol			Water cloud			Jet-stream cirrus			Ci cirrus		
	$a_1$	$a_2$	$a_3$	$a_1$	$a_2$	$a_3$	$a_1$	$a_2$	$a_3$	$a_1$	$a_2$	$a_3$
0.06							5.45E-02	0.665	2.31E-02	3.38E-02	0.696	3.48E-02
0.20	4.69E-02	4.380	2.34E-03	9.95E-02	1.068	1.05E-02	1.08E-01	0.956	9.47E-02	7.71E-02	0.906	1.24E-01
0.50	1.15E-01	4.319	9.28E-03	2.35E-01	0.995	2.94E-02	4.46E-01	0.628	1.84E-01	2.38E-01	0.708	2.92E-01
1.00	2.14E-01	4.603	4.26E-02	3.60E-01	1.097	1.32E-01	7.24E-01	0.692	4.37E-01	3.70E-01	0.831	6.29E-01

70 **Table S7.** Fitting coefficients of the empirical model. The CALIOP configuration.

$\varepsilon_p(h)$ ( $\text{km}^{-1}$ )	Water cloud		
	$a_1$	$a_2$	$a_3$
1.0	0.3094	0.6269	0.4269
2.0	-0.1754	0.5236	1.4309
5.0	-1.7236	1.1859	5.9731
10.0	-1.7160	2.6726	13.7002

**Table S8.** Fitting coefficients of the empirical model. The distance to the cloud base is of 8 km.

RFOV (mrad)	Water cloud		
	$a_1$	$a_2$	$a_3$
5	0.4198	0.8536	0.2192
10	0.4795	0.4268	0.4021
20	-0.0441	0.6590	0.6863
50	-1.2715	0.2620	1.1000

75