

# On the potential of a neural network-based approach for estimating XCO<sub>2</sub> from OCO-2 measurements

5 François-Marie Bréon, Leslie David, Pierre Chatelana, Frédéric Chevallier

Laboratoire des Sciences du Climat et de l'Environnement/IPSL,  
CEA-CNRS-UVSQ, Université Paris-Saclay, F-91191 Gif-sur-Yvette, France  
Correspondence to: Francois-Marie Breon (fmbreon@cea.fr)

10 **Abstract.** In David et al (2021), we introduced a neural network (NN) approach for estimating the column-averaged dry air mole fraction of CO<sub>2</sub> (XCO<sub>2</sub>) and the surface pressure from the reflected solar spectra acquired by the OCO-2 instrument. The results indicated great potential for the technique as the comparison against both model estimates and independent TCCON measurements showed an accuracy and precision similar or better than that of the operational ACOS (NASA's  
15 Atmospheric CO<sub>2</sub> Observations from Space retrievals – ACOS) algorithm. Yet, subsequent analysis showed that the neural network estimate often mimics the training dataset and is unable to retrieve small scale features such as CO<sub>2</sub> plumes from industrial sites. Importantly, we found that, with the same inputs as those used to estimate XCO<sub>2</sub> and surface pressure, the NN technique is able to estimate latitude and date with unexpected skill, i.e. with an error whose standard deviation is  
20 only 7° and 61 days, respectively. The information about the date mainly comes from the weak CO<sub>2</sub> band, that is influenced by the well-mixed and increasing concentrations of CO<sub>2</sub> in the stratosphere. The availability of such information in the measured spectrum may therefore allow the NN to exploit it rather than the direct CO<sub>2</sub> imprint in the spectrum, to estimate XCO<sub>2</sub>. Thus, our first version of the NN performed well mostly because the XCO<sub>2</sub> fields used for the training were  
25 remarkably accurate, but it did not bring any added value.

Further to this analysis, we designed a second version of the NN, excluding the weak CO<sub>2</sub> band from the input. This new version has a different behaviour as it does retrieve XCO<sub>2</sub> enhancements downwind of emission hotspots, i.e. a feature that is not in the training dataset. The comparison against the reference Total Carbon Column Observing Network (TCCON) and the surface-air-sample-driven inversion of the Copernicus Atmosphere Monitoring Service (CAMS) remains very good, as in the first version of the NN. In addition, the difference with the CAMS model (also called *innovation* in a data assimilation context) for NASA Atmospheric CO<sub>2</sub> Observations from Space (ACOS) and the NN estimates are correlated.  
30

These results confirm the potential of the NN approach for an operational processing of satellite observations aiming at the monitoring of CO<sub>2</sub> concentrations and fluxes. The true information content of the neural network product remains to be properly evaluated, in particular regarding the respective input of the measured spectrum and the training dataset.  
35

Deleted: significantly

## 1. Introduction

40 There is a growing interest for the monitoring of CO<sub>2</sub> from space. The aim is not so much the atmospheric concentration, which is already known with high accuracy, but rather the CO<sub>2</sub> fluxes. Indeed, there is a need to monitor natural fluxes of CO<sub>2</sub> to better understand their driving factors and to improve land and ocean models. There is also a strong societal requirement to monitor the CO<sub>2</sub> anthropogenic emissions at national and more detailed scales. For these objectives, a series of dedicated instruments have been put in orbit since the Greenhouse Gases Observing Satellite

(GOSAT, Yokota et al., 2009) and the second Orbiting Carbon Observatory (OCO-2 Eldering et al., 2017), launched in 2009 and 2014, respectively, and still operated at the time of writing. This new and evolving constellation is directly supported by Japanese, US, Chinese and European space agencies (CEOS Atmospheric Composition Virtual Constellation Greenhouse Gas Team, 2018).  
50 The OCO-3 instrument was launched in 2019 and is flying attached to the International Space Station (ISS) with a focus on the imagery of cities and industrial sites (Taylor et al., 2020). These targets are also the main focus of the CO2M mission under development at ESA.  
These missions all use the same general principal to estimate the CO<sub>2</sub> concentration in the atmosphere. They measure the reflected solar light at high spectral resolution, which allows  
55 identifying absorption lines whose depth is related to the total amount of gas along the atmospheric path. Atmospheric CO<sub>2</sub> shows a number of such lines close to 1.61 and 2.06 μm so that these spectral regions are targeted. Because the absorption is more intense at 2.06 μm, this measurement channel is often referred to as the *strong-CO<sub>2</sub>* (or sCO<sub>2</sub>) band, whereas the 1.61 μm is the *weak-CO<sub>2</sub>* (wCO<sub>2</sub>) band. The line depth is also affected by the surface pressure and the amount of  
60 scattering particles in the atmosphere. To identify and account for their contribution, an additional measurement is made around the oxygen absorption band at 0.76 μm (O<sub>2</sub> band). The combination of these measurements makes it possible to estimate the column-averaged dry air mole fraction of CO<sub>2</sub>, referred to as XCO<sub>2</sub> (Crisp et al., 2004). Note that the MicroCarb instrument, to be launched by CNES in 2022, will have a fourth band at 1.27 μm. This band serves the same purpose as the O<sub>2</sub>  
65 band; it has the advantage of being spectrally closer to the CO<sub>2</sub> bands and the disadvantage of being affected by airlow (Bertaux et al., 2020).

The interpretation of measured spectra in terms of XCO<sub>2</sub> is achieved through *full physics* algorithms that explicitly account for the absorption by CO<sub>2</sub>, O<sub>2</sub> and water vapor, for scattering in  
70 the atmosphere and for non-lambertian reflection on the Earth surface. The modeling must also account for the instrument line shape function and doppler effects. The inversion process is iterative and starts from a prior estimate of all atmospheric parameters. It is very computer-time consuming. The processing of OCO-2 data has shown systematic differences between the measured spectra and those modeled after inversion which led to the development of empirical  
75 corrections to the measured spectra (Crisp et al., 2012; O'Dell et al., 2018). In addition, raw XCO<sub>2</sub> retrievals show significant biases against reference ground-based retrievals (Wunch et al., 2011b, 2017). These biases, together with the comparison against modelling results, led to the development of empirical corrections to the retrieved XCO<sub>2</sub>.

The need for empirical corrections to the full-physics algorithms and the considerable computer load motivated us to develop an alternative approach described in David et al. (2021). We used an  
80 artificial network technique (NN) which is purely empirical, without the use of any radiative transfer model. Our hypothesis was that the CAMS (Copernicus Atmosphere Monitoring Service) model constrained by surface air-sample measurements provides a fairly accurate estimate of the atmospheric CO<sub>2</sub> concentration, including the growth rate over multiple years (Chevalier et al.,  
85 2019; see also Figure 8). Indeed, the seasonal cycle of CO<sub>2</sub> together with the growth rate generate a set of XCO<sub>2</sub> samples with a well-known variability. The uncertainties on the modeling ( $\approx 1$  ppm) are small with respect to the range of XCO<sub>2</sub> samples that is available in the multi-year dataset (20 ppm). As a consequence, although CAMS is not the truth, it may be used for supervised learning.  
90 Note that other 4D description of the atmospheric composition could have been used for our work. We chose CAMS mostly for practical reasons; the same procedure may be attempted with another modeling dataset.

In practice, we used a series of OCO-2 spectra from a 5 year-dataset for the NN training. We then applied the NN to the observations that were not used in the training and compared their estimates to both the same CAMS model used for the training and also the fully-independent set of Total  
95 Carbon Column Observing Network (TCCON, Wunch et al., 2011a) observations. The results indicated an accuracy and precision that were similar, if not better, to that of the ACOS algorithm.

Deleted: , <https://atmosphere.copernicus.eu/>

Formatted: English (US)

More recent results challenged our interpretation of the NN skill. In particular, the XCO<sub>2</sub> estimates of the NN did not show significant enhancement downwind of large power plants, unlike the product of the NASA Atmospheric CO<sub>2</sub> Observations from Space (ACOS) full-physics algorithm. This is shown in the following together with our interpretation. A new version of the NN resulted from this interpretation, that retains the high accuracy of the first version, while being much more independent from the training dataset.

In the following, Section 2 describes the main characteristic of the NN approach and the training procedure. Section 3 presents the limitation of the first version of the NN, as it shows no innovation with respect to the training dataset. Section 4 describes and justifies a new version of the NN approach. Section 5 discusses the results, suggests directions for improvements, and concludes.

## 2. Data and method

The NN described in this paper estimates XCO<sub>2</sub> from spectra measured by the OCO-2 satellite over land. Most of the analysis is made with the spectra acquired in nadir mode, but we have also developed a version for glint acquisition that is described and commented at the end of section 4. Conversely to the analysis in David et al. (2021) we now use all cross-track footprints. [A single NN is used to process all footprints even though the spectral elements of different footprints correspond to different sampled wavelength.](#)

We use spectral samples in the three bands of the instrument (around 0.76, 1.61 and 2.06  $\mu\text{m}$ ). They have footprints of  $\sim 3 \text{ km}^2$  on the ground. In principle, each band is described by 1016 samples but some are marked as bad either because some of the corresponding detectors died at some stage or because of known temporary or permanent issues. We systematically remove 15 spectral samples that are flagged in about 80% of the spectra and 478 pixels in the band edges. Conversely, we do not remove the samples that are affected by the deep solar lines, and we let the NN handle these specific features. Because the information in the spectrum is mostly in the relative depth of the absorption lines, and not in their overall amplitude, we normalize each spectrum by a radiance that is representative of the offline values (i.e. the mean of the 90-95% range for each spectrum). This essentially removes the impact of the variations in the surface albedo and in the solar irradiance linked to the sun zenith angle.

Figure 1 offers a graphical representation of the NN. As input, we use the three band spectra (or a subset, see below), the observation geometry (Sun and view zenith angle: SZA and VZA, and relative Azimuth: AZI). Some versions also use the surface pressure (Psurf) as input. No explicit information is provided to the NN regarding the location or date of the observation. The inputs feed all the neurons of a first “hidden” layer. We use a fully connected neural network, which means that all the neurons are connected to the neurons of the previous and next layer. We have attempted NN versions with a variable number of hidden layers (a single one was used in David et al. (2021)). Each neuron computes a weighted sum of the inputs and derives a single output on the basis of either a sigmoid function or a “rectified linear unit”. [The loss is derived from the Mean Absolute Error.](#) The weights of the input variables to the neurons are adjusted iteratively with the standard Keras library (Keras Team, 2015) for an optimal agreement between the NN output and a reference.

The NN training is based on OCO-2 radiance measurements (v10r) acquired between February 2015 and December 2019. We make use of XCO<sub>2</sub> estimates and the quality control filters of the ACOS L2Lite v9r products: only observations with *xco2\_quality\_flag=0* are used. For the validation of the NN estimates, we also use observations with relaxed quality requirements. For versions of the NN that use the surface pressure as input, we use the estimate that is provided together with the OCO-2 data and that is derived from the Goddard Earth Observing System, Version 5, Forward Processing for Instrument Teams (GEOS5-FP-IT) created at Goddard Space Flight Center Global Modeling and Assimilation Office (Suarez et al. 2008 and Lucchesi et al. 2013). The weather model pressures have been adjusted to the sounding surface height.

150 Our analysis makes use of the CAMS CO<sub>2</sub> atmospheric inversion (Chevallier et al., 2010; version  
19r1). This product was released in July 2020 and contributed, e.g., to the Global Carbon Budget  
2020 (Friedlingstein et al., 2020). It results from the assimilation of CO<sub>2</sub> surface air-sample  
measurements in a global atmospheric transport model run at spatial resolution 1.90° in latitude and  
3.75° in longitude over the period 1979-2019 and using the adjoint of this transport model. Neither  
155 satellite retrievals nor TCCON observations were used for this modelling. For each OCO-2  
observation, XCO<sub>2</sub> is computed from the collocated concentration vertical profile, through a simple  
integration weighted by the pressure width of the model layers. Note that the model layers use  
“dry” pressure coordinates so that there is no need for a water vapor correction in the vertical  
integration. The XCO<sub>2</sub> from CAMS is used both for the training and the evaluation, although using  
independent datasets: The “training” dataset is a 3% random sample of the full dataset. The  
160 observations that are used for the training are earmarked and not used for further evaluation.

Deleted: <https://atmosphere.copernicus.eu/>,  
Formatted: English (US)

### 3. Initial results and interpretation

David et al (2021) described a first version of the NN approach to estimate XCO<sub>2</sub>. In this first  
version, the surface pressure was not used as input, and the training was made on observations  
acquired during even months, while the validation used observations of the odd months. The results  
165 were surprisingly good, in that the statistical difference to both the CAMS modeling and the  
independent TCCON observations indicated an accuracy similar or better than that of the CAMS  
product. Further analysis posterior to the publication were worrisome, however.

Deleted: as

170 First, we found that well-documented local enhancements of XCO<sub>2</sub> in the ACOS product (e.g.,  
Nassar et al., 2017; Reuter et al., 2019), also referred to as *plumes*, did not show up in the NN  
product. We analyzed in particular a case over South Africa acquired on August, 31<sup>st</sup>, 2016 an  
illustration of which is provided on Figure A1. Over a distance of ≈100 km, the ACOS product  
shows several well identified enhancements of ≈5 ppm, whereas the NN product does not show any  
significant pattern. The presence of large coal power plants upwind of the OCO-2 observations  
makes the enhancements trustworthy. We found many similar cases where the NN did not display  
175 an XCO<sub>2</sub> plume where ACOS did. We concluded that the NN did reproduce the seasonal variation  
of XCO<sub>2</sub> together with the growth rate but was unable to identify small-scale features. Since all  
observations are processed independently, we could not interpret this apparent incoherence.  
Second, we made an experiment where the training dataset is biased by 1 ppm for the observations  
acquired during a single month (within the full period of 50+ months). When applied to the  
180 validation dataset, the differences to CAMS show a bias of ≈0.5 ppm but only for the observations  
that are within a few weeks of the biased period. This is rather surprising as the observation date is  
not an input of the NN. Still, these results provide a clear indication that this version of the NN is  
somehow sensitive to the observation date.

Deleted:

Deleted: n

185 To investigate the issue, we developed and trained a new NN with the same inputs, but aiming at  
estimating the date, latitude and longitude. For the training, we used the true values of these  
parameters and we analyzed how the NN was able to make an estimate based on the inputs (the  
spectra and the observation geometry). Figure 2 shows the histograms of the errors when applied to  
the independent dataset.

190 The results indicate that the NN approach is able to make a reasonable estimate of the location and  
date of the observation based on the spectra and the observation geometry. The standard deviation  
of the latitude error is on the order of 7°, and there is no significant difference with the footprint.  
One may expect that this information is largely derived from the observation geometry that changes  
with the latitude (both the SZA and the azimuth do). One argument in favor of this hypothesis is  
195 that the precision of the longitude estimate is much worse, with a standard deviation on the order of  
58°. Indeed, for a given day, the observation geometry is nearly the same for all successive orbits;  
thus, there is no information in the observation geometry to estimate the longitude, while there is  
such information for the latitude. As for the date, the standard deviation is ≈ 61 days, or 2 months.  
Clearly then, in the input data of the NN, there is indirect information about the observation date

Deleted: estimate

Deleted: .

and latitude and this was a surprise to us. Indeed, when describing the NN approach in David et al (2021), we argued that the NN had no information on the measurement date, as successive observations from the same day-of-year and location, but different years, were made with the exact same observation geometry.

210 The various histograms of Figure 1 were made using a single (O<sub>2</sub>) band, a combination of the O<sub>2</sub>  
band with either CO<sub>2</sub> band, and all three bands. The most striking difference between the various  
histograms is for the date estimate. Indeed, the accuracy strongly degrades when the wCO<sub>2</sub> band is  
not included. The combination of O<sub>2</sub>+wCO<sub>2</sub> bands leads to a much better accuracy (a factor of  
more than 3 on the standard deviation) than that obtained with O<sub>2</sub>+sCO<sub>2</sub>. The other differences on  
215 the histograms are not as large.

How does the NN gets an indirect information on the observation date, and why is this information somehow contained in the wCO<sub>2</sub> band? Our best interpretation is that the weak CO<sub>2</sub> spectrum is sensitive to the upper atmosphere CO<sub>2</sub> concentration that is rather well mixed while increasing regularly in time. The absorption lines in the sCO<sub>2</sub> band are much stronger so that their centers are saturated in the spectra. As a consequence, the CO<sub>2</sub> signal is more in the line wings which are more sensitive to the higher pressure (lower altitude) levels. The wCO<sub>2</sub> lines are not saturated and the spectrum shape may provide the information for an estimate of the high-altitude CO<sub>2</sub> concentration. We investigated another hypothesis that the wCO<sub>2</sub> detector shows an evolution in time, that could be used by the NN to infer the observation date. However, we did not find any indication of such behavior. Thus, at this point, the stratospheric CO<sub>2</sub> hypothesis is physically plausible and is our best hypothesis because of no other. Note however that we have investigated the correlation between the longitudinal anomalies of stratospheric CO<sub>2</sub> in the CAMS model and the error on the date estimate by the NN approach. No such correlation was found. Thus, either our hypothesis is wrong or the description of the longitudinal variations of stratospheric CO<sub>2</sub> in CAMS offer a poor representation of the reality. Both hypotheses are plausible.

230 These results clearly demonstrate that the input data to the NN provides indirect information on the date and latitude. Atmospheric simulations such as those of CAMS indicate that XCO<sub>2</sub> variations are mostly a function of time and latitude. Indeed, on average, the deviations of XCO<sub>2</sub> along the  
235 longitudes are on the order of 0.5 ppm (standard deviation). They are however larger ( $\approx 1$  ppm) over the Northern hemisphere where most of the observations analyzed here are acquired. We hypothesize that our first version of the NN, as published in David et al. (2021) obtains a proxy of the latitude and date, and outputs the corresponding CAMS value. Based on the CAMS simulation, we found that the typical uncertainty on the position and date ( $\sigma_{\text{lat}}=7^\circ$ ,  $\sigma_{\text{lon}}=58^\circ$  and  $\sigma_{\text{date}}=60$  days) leads to a 1-sigma error of 0.91 ppm on XCO<sub>2</sub> (difference between the values at the true and perturbed location/date). This value appears consistent with the precision obtained with our first version of the NN. Note however that this statistical difference gets larger when considering locations consistent with the OCO-2 observations that are used here. The important point is that the error increases considerably (a factor of 2) for degraded precisions on the location and date with a different version of the NN that is discussed below.

#### 4. A new version of the neural network

As shown above, the NN appears to use the wCO<sub>2</sub> band to derive a proxy of the observation date which makes it possible, together with the proxies of the location, to estimate XCO<sub>2</sub> based on the statistical distribution of the CAMS XCO<sub>2</sub>. To avoid this feature, an option is to not use the information from the wCO<sub>2</sub> band. We therefore developed a similar version of the NN but without this band (i.e. only the O<sub>2</sub> and sCO<sub>2</sub>, together with the observation geometry). With this version, the behavior of the NN changes markedly. The most important feature is that the NN now reproduces the XCO<sub>2</sub> plumes that are shown by the output of the ACOS algorithm. Two representative examples are shown in Figure 3. These cases demonstrate that the NN does produce XCO<sub>2</sub> features that are not in the training database, as we expected. The NN is trained on the

Deleted: s

Deleted: an

Deleted: the typical

Deleted: Thus, w

260 variations of XCO<sub>2</sub> caused by the atmospheric growth rate and the surface flux seasonal cycle. It identifies signatures in the spectra that relate to the CO<sub>2</sub> atmospheric content. These signatures can then be used for an estimate of XCO<sub>2</sub>, even for situations that are poorly reproduced in the training dataset.

265 In addition to the change in the band selection, and posterior to the result shown in Figure 3, we made several other modifications to the NN algorithm:

270 First, we decided to use the surface pressure from the weather forecast model as an additional input to the NN. In David et al. (2021), the surface pressure was an output of the NN model. It was used to demonstrate the capability of the NN approach to interpret the spectral shapes in terms of atmospheric parameters. Indeed, the estimate of the surface pressure could be compared to an independent estimate from numerical weather analyses which are known to be precise within  $\approx 1$  ‰. However, the surface pressure may alternatively provide useful information to the NN for the interpretation of the spectra, as it does in the full-physics algorithms in the form of a prior estimate and also for the derivation of the bias-corrected product.

275 Second, we decided to increase the number of NN hidden layers to 5 (instead of 1 in David et al. 2021). Our experience indicates that, with a larger number of layers, there is less over-fitting of the training spectra, i.e. there is a better agreement between the loss of the training and that of the test dataset. An increased number of hidden layers also leads to slightly better performance, in particular for the NN that was designed for the land-glint observations (see below).

280 Third, we developed a similar approach for the glint cases (still over land). Our initial fear was that it would be more difficult for the NN to handle glint observations because of (i) larger variations in the optical path than for the nadir mode and (ii) the doppler effect that may affect the absorption line positions on the input spectra. This is why our first attempts focused on the nadir cases, but there is a need to also exploit the many observations acquired in glint mode.

285 Figure 4 shows the inter-comparison of the XCO<sub>2</sub> estimated from CAMS, ACOS and NN. All three datasets are highly consistent, with a statistical difference around 1 ppm and little bias. Let us recall that there is no satellite data input to the version of CAMS that is used here, so that it is fully independent from ACOS. The 1.06 ppm standard deviation of their differences demonstrates that both product precisions are better than this number. CAMS and the NN are not as independent because the latter is trained with the former (but using different space-time locations). Let us stress that any bias in CAMS may be transferred to the NN product. Thus, a high agreement between CAMS and the NN product is not a demonstration of the latter accuracy. Still, it has been shown that the NN retrieves features that are not in CAMS which indicates some independence between the satellite product and the model. The standard deviation of their differences is 0.85 ppm. The quadratic difference between NN and ACOS is a strong function of the sCO<sub>2</sub> albedo as shown in Figure 5: it decreases from  $\approx 1.5$  to  $\approx 0.75$  ppm as the sCO<sub>2</sub> band albedo increases from 0.10 to 0.45. A better accuracy of the satellite product with stronger surface albedo is expected as (i) the measurement signal to noise gets higher and (ii) the relative contribution of atmospheric scattering to the signal decreases. The estimate precision is also a function of the O<sub>2</sub> band albedo, but this effect is not as strong and the O<sub>2</sub> band albedo shows less variability than that of the sCO<sub>2</sub> band.

290 Figure 4 also shows that the slope of the best fit of the satellite products against CAMS are small but of opposite side with respect to 1. As a consequence, there is a more significant slope deviation from 1 (0.97) between the two satellite products.

305 Figure 6 provides further information on the differences between the remotely-sensed products and the CAMS estimate. The histograms are close to Gaussian and confirm that NN is closer to CAMS than the ACOS counterpart. An interesting feature is that both the NN-CAMS and ACOS-CAMS differences depend on the cloud flag (*cloud\_flag\_idp*), which indicates that this flag has some value. The difference between the cloud contamination histogram remains small however, and does not deserve to disqualify the observations with a cloud flag of 2. Here, we only use the “definitely clear” and “probably clear” cases (flags of 3 and 2). The population of the lower value cases (“definitely cloudy” and “probably cloudy”) is much smaller and the histogram for these cases are

Deleted: o

Deleted: a



315 not shown, while they show further degradation. It is difficult to elaborate further as the true nature of the cloud contamination in the cases classified as “probably clear” is unknown.

320 Figure 7 is based on the satellite product innovation, i.e. the difference to the model estimates. Indeed, one may consider that the model provides current knowledge on the XCO<sub>2</sub> distribution, constrained by surface air-sample measurements and atmospheric transport. The satellite product has the potential to improve this knowledge, but only as much as the difference with the model estimate. Typical values are around 1 ppm. The interesting result brought by Figure 7 is that the two satellite estimates are significantly correlated. This provides further evidence that the NN estimate is not only a reconstruction of the training dataset (CAMS) with some noise. Indeed, when NN differs from the model, ACOS, the independent satellite product, tends to agree.

325 Finally, Figure 8 shows a comparison of the model and remotely sensed estimates of XCO<sub>2</sub> against the reference retrievals of the TCCON network. Although the OCO-2 satellite platform can be oriented so that the instrument field of view is close to the surface station, we only use here nadir data. Indeed, the NN was not trained on the target data and can only be used to process  
330 measurements that have been acquired in observation configurations that are similar to those of the training. We thus have to rely on nadir or glint measurements acquired in the vicinity of TCCON sites. In the following, we use nadir measurements that are within 5 degrees in longitude and 1.5 degrees in latitude to the TCCON site. For the reference, we average the TCCON estimates of XCO<sub>2</sub> within 30 minutes of the satellite overpass. No attempt was made to correct for the different  
335 weighting functions of the surface and spaceborne remote sensing estimates. Statistics per station are provided in Table 1. The biases vary significantly among stations, although they are generally less than 1 ppm (in amplitude). Two stations, Pasadena and Zugspitze, show a large negative bias for both satellite estimates as well as the model. For Pasadena, it may be interpreted as the impact of the city on the atmosphere sampled by the TCCON measurement, while the atmosphere at the  
340 location of the satellite observation (which may be several hundred km away) is less affected. Zugspitze is a high-altitude site (2960 m), so that the atmospheric column sampled by the sunphotometer does not have the same vertical representativeness as that of the satellite observation (in addition to the spatial distance, that is common with other sites). A large negative bias is also found at Eureka (80.05°N). The fact that the difference with the CAMS model at this site is much  
345 larger than for other sites could hint at an issue in the sunphotometer product there. Conversely, there are large positive biases at Burgos and Ny-Ålesund (78.9°N, very close to the latitude of Eureka). Since the model and satellite estimates somewhat agree, one may also question the TCCON calibration at these sites. For other stations, which forms the large majority, the biases are smaller than 1 ppm and there is a fair consistency between the satellite products in the sense that the sign of their bias is the same in most cases. The range of the difference with TCCON varies among  
350 stations. The best satellite-TCCON agreement is found at the Lamont station which, interestingly, is also the one with the most coincidences. Excellent agreement is also seen at Darwin, Edwards, Park Falls and Bremen. The comparison with TCCON does not allow favoring one satellite estimate versus the other. Focusing on the stations with a large number of observation (25 overpasses or more), the NN estimates appears slightly better than ACOS at Darwin, Edwards, Garmisch, Orléans and Bialystok, while it is the opposite at Saga, Park Falls, and Sodankylä. The figure (and table) also clearly shows that the CAMS product offers a better agreement with the TCCON data than any of the satellite estimates in most cases. The high quality of the CAMS modelling used in this paper, at least over the TCCON site, provides further justification of its use as a training dataset.

360 We have applied a very similar procedure to the OCO-2 observations acquired in glint mode over land. An evaluation of the estimate performance is shown in Figure 6, 7, A3 and A4. The conclusions are very similar to those obtained for nadir. The agreement with CAMS is slightly degraded with respect to the nadir cases (0.92 ppm vs 0.85 for the “certainly clear” observations)

Deleted:

Deleted: s

Deleted: are

Deleted: , which questions the added value of the remote-sensing data at large scale and in delayed mode (about nine months after the date for the surface air-sample-driven CAMS product)

375 but somewhat closer than that of ACOS (Fig. 6 and S3). The deviations from the model of the two satellite estimates are significantly correlated, and the correlation coefficient is even larger than that derived for nadir observations (0.45 vs 0.39, Figure 7). The comparison with the TCCON estimates leads to the same conclusions as those described above for the nadir cases.

Deleted: remains significantly better

### 5. Discussion and Conclusion

380 This paper follows on from David et al. (2021) in which we described a neural network-based technique to estimate XCO<sub>2</sub> and the surface pressure from the OCO-2 spectral measurements. An important message is that our interpretation of the results in that earlier study was incorrect. The NN developed in that paper reproduced the statistical variations of the training dataset (CAMS) and was unable to generate features, such as plume from emission hot-spots. Thus, contrary to our claims, the NN method, as presented in that paper, could not be used to process OCO-2 and generate XCO<sub>2</sub> estimates with any real value. We have shown here that a NN-based procedure is able to estimate the latitude and date of the observation with a reasonable accuracy. This was unexpected to us as we wrote in David et al. (2021) “Let us recall that the NN input does not contain any information on the location or date of the observation. This is a strong indication that the information is derived from the spectra as the NN does not “know” the CAMS value that corresponds to the observation location”. Our interpretation was wrong. In fact, the NN input can somehow be used by the NN for a fairly accurate estimate of the latitude and date. Because most of XCO<sub>2</sub> variations are a function of latitude and date, this information could be used by the NN to generate a reasonable estimate, i.e. one that mimics the main variations in the training dataset.

Deleted: il

385 A question remains on the indirect information that is used by the NN to estimate the observation date. The fact that the precision on the date estimate is much better when using a combination of the O<sub>2</sub>+wCO<sub>2</sub> rather than of the O<sub>2</sub>+sCO<sub>2</sub> suggests that the information lies in the wCO<sub>2</sub> band. Our best hypothesis is that the wCO<sub>2</sub> spectra contains some information on the stratospheric CO<sub>2</sub> whose concentration is well-mixed while increasing regularly with time and implicitly contains, therefore, an information on the observation date. Further testing this hypothesis would require, for instance, the identification of some anomaly in the stratospheric CO<sub>2</sub> (linked to a specific atmospheric circulation) that would show up as a significant error on the date estimate made by the NN. We have not been able to identify such feature.

Deleted: is

400 Despite this initial setback we have continued our analysis on the potential of the NN to process the OCO-2 spectra. A strong motivation relied on the results obtained for the estimate of the surface pressure. Indeed, David et al. (2021) showed that the NN could estimate the surface pressure with an accuracy on the order of 3 hPa. The spatial and temporal variations of the surface pressure, at the scale of the potential accuracies on the date and location, are very much larger than this number, so that the NN estimate cannot rely on this kind of indirect information. This provided a strong indication that the NN method has the potential to extract meaningful information from the spectra itself.

Deleted: some

Deleted: on the date and location

Deleted: s

410 We have therefore developed a new version of the NN excluding the wCO<sub>2</sub> band from the inputs. In this version, the behavior of the NN is very much different from the earlier version as it generates features that are not in the training dataset. This clearly shows that the NN uses the signature of XCO<sub>2</sub> contained in the sCO<sub>2</sub> spectra to make an XCO<sub>2</sub> estimate. The accuracy of this estimate is similar to the one obtained with the first version of the NN, and similar to that of the ACOS products. This is confirmed by the comparison of the XCO<sub>2</sub> estimates against the TCCON retrievals. Another strong argument that the NN XCO<sub>2</sub> estimate contains true information and is not only a noisy copy of the training dataset is that the innovations of the two satellite estimates, i.e. the differences to the model data, are significantly correlated (Fig. 7).

420 Note that we use here a single neural network for the eight footprints of the OCO-2 instrument. We analyzed whether the result performance, assessed as the standard deviation of the differences with CAMS, is a function of the footprint. The statistics are very similar for all, except for footprint #2 that shows slightly higher deviation for both the ACOS and the NN satellite products (a difference of ≈0.1 ppm to the mean of ≈1 ppm).



430 These results confirm that the NN technique has a strong potential to process the OCO-2  
observations, as well as those from forthcoming missions aiming at the observation of CO<sub>2</sub> from  
space such as the forthcoming MicroCarb (Pascal et al. 2017) or the CO2M constellation (Sierk et  
al. 2019). As discussed above, the current version does not use the wCO<sub>2</sub> band at all and this may  
435 be seen as a loss of useful information. There is therefore a need to select appropriate spectral  
samples in the wCO<sub>2</sub> band rather than discarding them all. It requires improved understanding of  
the indirect information that is used by the NN to estimate the observation date and location.

The NN technique has two obvious advantages compared to the physical methods that are used to  
process the OCO-2 observations as well as other instruments with similar objectives: (i) a much  
440 smaller computational burden and (ii) no need for a de-bias procedure (O'Dell et al 2018, Kiel et al.  
2019). Our implementation still faces remaining challenges, that we discussed in David et al.  
(2021).

The first challenge is the cloud detection. All the analysis described in this paper relies on the  
445 ACOS cloud detection and only the observations identified as "clear" are processed. Our analysis  
demonstrates the potential of the NN approach but is currently not independent from ACOS. We  
are currently evaluating independent approaches for the cloud detection. Although the NN  
described here aims at an estimate of XCO<sub>2</sub>, we have shown earlier that the same tool can be used  
for an estimate of the surface pressure with a 1 sigma precision on the order of 3 hPa for clear-sky  
450 cases. Numerical weather analyses are actually better than that. Thus, one may use the comparison  
of the surface pressure estimate from the NN to the numerical weather data for an easy  
identification of perturbations to the spectra that are linked to cloud or large aerosol contamination.  
This would allow an easy and rapid quality indicator for the selection of observations that may be  
used for XCO<sub>2</sub> estimates, either using a physics-based algorithm or a NN approach. This idea  
455 remains to be evaluated.

The second challenge concerns the absence of a quantitative indication of the amount of  
information that the NN takes from its prior information (contained in the training database) vs. the  
amount of information that the NN takes from the measured spectra. For Bayesian full-physics  
460 retrievals, these weights are represented by the *averaging kernel* (Rodgers, 1990) that allows a  
clean comparison of each retrieval with 3D atmospheric models, at least in theory (see the  
discussion about the practical difficulties in Chevallier, 2015). The NN training targets the CO<sub>2</sub>  
column with a homogeneous weighting along the vertical but this can hardly be achieved without  
some contribution from the prior information. This challenge may be evaluated in the future on the  
465 basis of radiative transfer simulations.

The third challenge concerns the absence of a quality indicator with the XCO<sub>2</sub> estimate. With the  
470 physical methods, the spectrum residuals provide an efficient mean to identify cases when no  
satisfactory agreement can be found between the measured and modelled spectra. With the NN  
approach, there is no uncertainty associated to each retrieval. Our analysis has shown that the  
apparent precision (evaluated against CAMS) is a strong function of the surface albedo. There may  
be other geophysical variables that pilot the uncertainty. To provide precision estimates for each  
475 NN-based XCO<sub>2</sub> estimate, ensembles of randomized trainings, where uncertain parameters or  
input/output variables are varied adequately (e.g., Chau et al. 2021), or analytical estimates (Aires et  
al., 2004) should be explored.

The last challenge concerns the need for a high-quality training dataset, in the context of increasing  
480 XCO<sub>2</sub>. The comparison against the TCCON observations (Figure 8) demonstrates that the CAMS  
inversion product meets this requirement. In fact, there are strong indications that CAMS remains  
better than the satellite products, at the very least in terms of global precision. However, because of  
the atmospheric growth rate of CO<sub>2</sub>, the training must be regularly updated. Indeed, with a frozen

**Moved down [1]:** absence of a quality indicator. With the physical methods, the spectrum residuals provide an efficient mean to identify cases when no satisfactory agreement can be found between the measured and modelled spectra.

**Moved down [2]:** To provide precision estimates for each NN-based XCO<sub>2</sub> estimate, ensembles of randomized trainings, where uncertain parameters or input/output variables are varied adequately (e.g., Chau et al. 2021), or analytical estimates (Aires et al., 2004) should be explored. ¶

**Moved (insertion) [1]**

**Moved (insertion) [2]**

training dataset, the true real-time XCO<sub>2</sub> progressively leaves the training range. The NN approach requires a training dataset that is representative of the observation and would then lead to underestimates. For quasi-near-real time data assimilation (e.g., Massart et al., 2016), the training dataset must therefore gradually integrate recent high-quality XCO<sub>2</sub> data, but without sacrificing robustness.

As a final remark, we call for caution. We have been tricked by the NN ability to generate a consistent description of the atmospheric XCO<sub>2</sub> in our first analysis. It is difficult to ensure that we are not tricked again. The source of the information that leads to a fairly accurate estimate of the date, when using the weak CO<sub>2</sub> band, remains unclear. As a consequence, although it is demonstrated that the new version of the NN generates structures that are not in the training dataset, there may be biases in the CAMS modeling that have a significant influence on the NN product.

#### Acknowledgments

This work was in part funded by CNES, the French space agency, in the context of the preparation for the MicroCarb mission, and, to a smaller extent, by the Copernicus Atmosphere Monitoring Service, implemented by the European Centre for Medium-Range Weather Forecasts (ECMWF) on behalf of the European Commission.

OCO-2 L1 and L2 data were produced by the OCO-2 project at the Jet Propulsion Laboratory, California Institute of Technology, and obtained from the ACOS/OCO-2 data archive maintained at the NASA Goddard Earth Science Data and Information Services Center. TCCON data were obtained from the TCCON Data Archive, hosted by the Carbon Dioxide Information Analysis Center (CDIAC) - tcccon.onrl.gov. We warmly thank those who made these data available.

#### Code/Data availability

The codes used in this paper and the CAMS model simulations are available, upon request, from the author. The OCO-2 and TCCON data can be downloaded from the respective websites.

#### Author contributions

FMB designed the study. PC and LD developed the codes and performed the computations. All authors shared the result analysis.

#### Competing interests

The authors declare no competing interests.

#### References

Agustí-Panareda, A., Diamantakis, M., Massart, S., Chevallier, F., Muñoz-Sabater, J., Barré, J., Curcoll, R., Engelen, R., Langerock, B., Law, R. M., Loh, Z., Morguí, J. A., Parrington, M., Peuch, V.-H., Ramonet, M., Roehl, C., Vermeulen, A. T., Warneke, T., and Wunch, D.: Modelling CO<sub>2</sub> weather – why horizontal resolution matters, *Atmos. Chem. Phys.*, 19, 7347–7376, doi:10.5194/acp-19-7347-2019, 2019.

Aires, F., Prigent, C., and Rossow, W. B. (2004), Neural network uncertainty assessment using Bayesian statistics with application to remote sensing: 2. Output errors, *J. Geophys. Res.*, 109, D10304, doi:10.1029/2003JD004174.

- Bertaux, J.L., et al., 2020 : The use of the 1.27  $\mu\text{m}$  O<sub>2</sub> absorption band for greenhouse gas monitoring from space and application to MicroCarb. *Atmos. Meas. Tech.*, 13, 3329–3374, 2020. [amt-13-3329-2020](https://doi.org/10.5194/amt-13-3329-2020)
- 535 Blumenstock, T., Hase, F., Schneider, M., Garcia, O. E., Sepulveda, E.: TCCON data from Izana (ES), Release GGG2014R1, TCCON data archive, CDIAC, <https://doi.org/10.14291/tcon.ggg2014.izana01.R1>, 2017.
- CEOS: A Constellation Architecture for Monitoring Carbon Dioxide and Methane from Space, Tech. Rep., University of Zurich, Department of Informatics, available at: [http://ceos.org/document\\_management/Meetings/Plenary/32/documents/CEOS\\_AC-VC\\_White\\_Paper\\_Version\\_1\\_20181009.pdf](http://ceos.org/document_management/Meetings/Plenary/32/documents/CEOS_AC-VC_White_Paper_Version_1_20181009.pdf) (last access: 18 October 2019), 2018.
- 540 Chau, T. T. T., Gehlen, M., and Chevallier, F.: A seamless ensemble-based reconstruction of surface ocean  $p\text{CO}_2$  and air–sea  $\text{CO}_2$  fluxes over the global coastal and open oceans, *Biogeosciences*, <https://doi.org/10.5194/bg-19-1087-2022>
- 545 Chevallier, F.: On the statistical optimality of  $\text{CO}_2$  atmospheric inversions assimilating  $\text{CO}_2$  column retrievals, *Atmos. Chem. Phys.*, 15, 11133–11145, doi:10.5194/acp-15-11133-2015, 2015.
- Chevallier, F., Fisher, M., Peylin, P., Serrar, S., Bousquet, P., Bréon, F.-M., Chédin, A., and Ciais, P.: Inferring  $\text{CO}_2$  sources and sinks from satellite observations: Method and application to TOVS data, *J. Geophys. Res.*, 110, D24309, doi:10.1029/2005JD006390, 2005.
- 550 Chevallier, F., Ciais, P., Conway, T. J., Aalto, T., Anderson, B. E., Bousquet, P., Brunke, E. G., Ciattaglia, L., Esaki, Y., Frohlich, M., Gomez, A., Gomez-Pelaez, A. J., Haszpra, L., Krummel, P. B., Langenfelds, R. L., Leuenberger, M., Machida, T., Maignan, F., Matsueda, H., Morgu, J. A., Mukai, H., Nakazawa, T., Peylin, P., Ramonet, M., Rivier, L., Sawa, Y., Schmidt, M., Steele, L. P., Vay, S. A., Vermeulen, A. T., Wofsy, S., and Worthy, D.:  $\text{CO}_2$  surface fluxes at grid point scale estimated from a global 21 year reanalysis of atmospheric measurements, *J. Geophys. Res.-Atmos.*, 115, D21307, doi:10.1029/2010JD013887, 2010.
- 555 [Chevallier, F., M. Remaud, C.W. O'Dell, D. Baker Ph Peylin and A. Cozic: Objective evaluation of surface- and satellite-driven carbon dioxide atmospheric inversions. \*Atmos. Chem. Phys.\*, 19, 14233–14251, 2019. <https://doi.org/10.5194/acp-19-14233-2019>](https://doi.org/10.5194/acp-19-14233-2019)
- 560 Crisp, D., Atlas, R. M., Breon, F.-M., Brown, L. R., Burrows, J. P., Ciais, P., Connor, B. J., Doney, S. C., Fung, I. Y., Jacob, D. J., Miller, C. E., O'Brien, D., Pawson, S., Randerson, J. T., Rayner, P., Salawitch, R. J., Sander, S. P., Sen, B., Stephens, G. L., Tans, P. P., Toon, G. C., Wennberg, P. O., Wofsy, S. C., Yung, Y. L., Kuang, Z., Chudasama, B., Sprague, G., Weiss, B., Pollock, R., Kenyon, D., and Schroll, S.: The Orbiting Carbon Observatory (OCO) mission, *Adv. Space Res.*, 34, 700–709, doi:10.1016/j.asr.2003.08.062, 2004.
- 565 Crisp, D., Fisher, B. M., O'Dell, C., Frankenberg, C., Basilio, R., Bösch, H., Brown, L. R., Castano, R., Connor, B., Deutscher, N. M., Eldering, A., Griffith, D., Gunson, M., Kuze, A., Mandrake, L., McDuffie, J., Messerschmidt, J., Miller, C. E., Morino, I., Natraj, V., Notholt, J., O'Brien, D. M., Oyafuso, F., Polonsky, I., Robinson, J., Salawitch, R., Sherlock, V., Smyth, M., Suto, H., Taylor, T. E., Thompson, D. R., Wennberg, P. O., Wunch, D., and Yung, Y. L.: The ACOS  $\text{CO}_2$  retrieval algorithm – Part II: Global X  $\text{CO}_2$  data characterization, *Atmos. Meas. Tech.*, 5, 687–707, <https://doi.org/10.5194/amt-5-687-2012>, 2012.
- 570 David, L., FM. Bréon, F. Chevallier : XCO<sub>2</sub> estimates from the OCO-2 measurements using a neural network approach. *Atmos. Meas. Tech.*, 14, 117–132, 2021. <https://doi.org/10.5194/amt-14-117-2021>
- 575 De Maziere, M., Sha, M.K., Desmet, F., Hermans, C., Scolas, F., Kumps, N., Metzger, J.-M., Dufлот, V., and Cammas, J.-P.: TCCON data from Reunion Island (RE), Release GGG2014R0, TCCON data archive, CDIAC, <https://doi.org/10.14291/tcon.ggg2014.reunion01.R0>, 2017.

Deleted: Discuss

Deleted: [preprint],

Deleted: <https://doi.org/10.5194/bg-2021-207>, in review, 2021.

- Deutscher, N. M., Notholt, J., Messerschmidt, J., Weinzierl, C., Warneke, T., Petri, C., Grupe, P., and Katrynski, K.: TCCON data from Bialystok (PL), Release GGG2014R2, TCCON data archive, CDIAC, <https://doi.org/10.14291/tcon.ggg2014.bialystok01.R2>, 2017.
- 585 Dubey, M., Henderson, B., Green, D., Butterfield, Z., Keppel- Aleks, G., Allen, N., Blavier, J.-F., Roehl, C., Wunch, D., and Lindenmaier, R.: TCCON data from Manaus (BR), Release GGG2014R0, TCCON data archive, CDIAC, <https://doi.org/10.14291/tcon.ggg2014.manaus01.R0/1149274>, 2017.
- 590 Eldering, A., Pollock, R., Lee, R. A. M., Rosenberg, R., Oyafuso, F., Crisp, D., Chapsky, L., and Granat, R.: Orbiting Carbon Observatory (OCO) – 2 Level 1B Theoretical Basis Document, available at: [http://disc.sci.gsfc.nasa.gov/OCO-2/documentation/oco-2-v7/OCO2\\_L1B\\_ATBD.V7.pdf](http://disc.sci.gsfc.nasa.gov/OCO-2/documentation/oco-2-v7/OCO2_L1B_ATBD.V7.pdf) (last access: 16 June 2016), 2015.
- 595 Eldering, A., Wennberg, P. O., Crisp, D., Schimel, D., Gunson, M. R., Chatterjee, A., Liu, J., Schwandner, F. M., Sun, Y., O'Dell, C. W., Frankenberg, C., Taylor, T., Fisher, B., Osterman, G. B., Wunch, D., Hakkarainen, J., Tamminen, J., and Weir, B.: The Orbiting Carbon Observatory-2 early science investigations of regional carbon dioxide fluxes, *Science*, 358, doi:10.1126/science.aam5745, 2017.
- 600 Friedlingstein, P., O'Sullivan, M., Jones, M. W., Andrew, R. M., Hauck, J., Olsen, A., Peters, G. P., Peters, W., Pongratz, J., Sitch, S., Le Quéré, C., Canadell, J. G., Ciais, P., Jackson, R. B., Alin, S., Aragão, L. E. O. C., Arneeth, A., Arora, V., Bates, N. R., Becker, M., Benoit-Cattin, A., Bittig, H. C., Bopp, L., Bultan, S., Chandra, N., Chevallier, F., Chini, L. P., Evans, W., Florentie, L., Forster, P. M., Gasser, T., Gehlen, M., Gilfillan, D., Gkritzalis, T., Gregor, L., Gruber, N., Harris, I., Hartung, K., Haverd, V., Houghton, R. A., Ilyina, T., Jain, A. K., Joetzjer, E., Kadono, K., Kato, E., Kitidis, V., Korsbakken, J. I., Landschützer, P., Lefèvre, N., Lenton, A., Lienert, S., Liu, Z., Lombardozi, D., Marland, G., Metzl, N., Munro, D. R., Nabel, J. E. M. S., Nakaoka, S.-I., Niwa, Y., O'Brien, K., Ono, T., Palmer, P. I., Pierrot, D., Poulter, B., Resplandy, L., Robertson, E., Rödenbeck, C., Schwinger, J., Séférian, R., Skjelvan, I., Smith, A. J. P., Sutton, A. J., Tanhua, T., Tans, P. P., Tian, H., Tilbrook, B., van der Werf, G., Vuichard, N., Walker, A. P., Wanninkhof, R., Watson, A. J., Willis, D., Wiltshire, A. J., Yuan, W., Yue, X., and Zaehle, S.: Global Carbon Budget 2020, *Earth Syst. Sci. Data*, 12, 3269–3340, <https://doi.org/10.5194/essd-12-3269-2020>, 2020.
- 610 Goo, T.-Y., Oh, Y.-S., & Velazco, V. A. (2014). TCCON data from Anmeyondo (KR), Release GGG2014.R0 (Version GGG2014.R0) [Data set]. CaltechDATA. <https://doi.org/10.14291/TCCON.GGG2014.ANMEYONDO01.R0/1149284>
- 615 Griffith, D. W., Deutscher, N. M., Velazco, V. A., Wennberg, P. O., Yavin, Y., Aleks, G. K., Washenfelder, R. a., Toon, G. C., Blavier, J.-F., Murphy, C., Jones, N., Kettlewell, G., Connor, B. J., Macatangay, R., Roehl, C., Ryzek, M., Glowacki, J., Culgan, T., and Bryant, G.: TCCON data from Darwin (AU), Release GGG2014R0, TCCON data archive, CDIAC, <https://doi.org/10.14291/tcon.ggg2014.darwin01.R0/1149290>, 2017a.
- 620 Griffith, D. W., Velazco, V. A., Deutscher, N. M., Murphy, C., Jones, N., Wilson, S., Macatangay, R., Kettlewell, G., Buchholz, R. R., and Riggensbach, M.: TCCON data from Wollongong (AU), Release GGG2014R0, TCCON data archive, CDIAC, <https://doi.org/10.14291/tcon.ggg2014.wollongong01.R0/1149291>, 2017b.
- 625 Hadji-Lazaro, J., Clerbaux, C., and Thiria, S.: An inversion algorithm using neural networks to retrieve atmospheric CO total columns from high-resolution nadir radiances, *J. Geophys. Res.*, 104, 23841-23854, doi:10.1029/1999JD900431, 1999.
- Hase, F., Blumenstock, T., Dohe, S., Gross, J., and Kiel, M.: TCCON data from Karlsruhe (DE), Release GGG2014R1, TCCON data archive, CDIAC, <https://doi.org/10.14291/tcon.ggg2014.karlsruhe01.R1/1182416>, 2017.

- 630 Iraci, L. T., Podolske, J., Hillyard, P. W., Roehl, C., Wennberg, P. O., Blavier, J.-F., Landeros, J., Allen, N., Wunch, D., Zavaleta, J., Quigley, E., Osterman, G., Albertson, R., Dunwoody, K., and Boyden, H.: TCCON data from Edwards (US), Release GGG2014R1, TCCON data archive, CDIAC, <https://doi.org/10.14291/tcon.ggg2014.edwards01.R1/1255068>, 2017.
- Keras Team: Keras, available at: <https://github.com/fchollet/keras>, 2015.
- 635 Connor, B. J., Siskind, D. E., Tsou, J. J., Parrish, A., and Remsberg, E. E.: Ground-based microwave observations of ozone in the upper stratosphere and mesosphere, *J. Geophys. Res.*, **99**, 16757–16770, 1994.
- Kiel, M., O'Dell, C. W., Fisher, B., Eldering, A., Nassar, R., MacDonald, C. G., and Wennberg, P. O.: How bias correction goes wrong: measurement of XCO<sub>2</sub> affected by erroneous surface pressure estimates, *Atmos. Meas. Tech.*, **12**, 2241–2259, <https://doi.org/10.5194/amt-12-2241-2019>, 2019.
- 640 Kivi, R., Heikkinen, P., and Kyrö, E.: TCCON data from Sodankylä (FI), Release GGG2014R0, TCCON data archive, CDIAC, <https://doi.org/10.14291/tcon.ggg2014.sodankyla01.R0/1149280>, 2017.
- Knorr, W.: Is the airborne fraction of anthropogenic CO<sub>2</sub> emissions increasing?, *Geophys. Res. Lett.*, **36**, L21710, doi:10.1029/2009GL040613, 2009.
- 645 Liu, C., Wang, W., Sun, Y.: TCCON data from Hefei (PCR), Release GGG2014R0, TCCON data archive, CDIAC, <http://doi.org/10.14291/tcon.ggg2014.hefei01.R0>, 2018.
- Lucchesi, R.: File Specification for GEOS-5 FP-IT (Forward Processing for Instrument Teams), Tech. rep., NASA Goddard Spaceflight Center, Greenbelt, MD, USA, available at: <https://ntrs.nasa.gov/archive/nasa/casi.ntrs.nasa.gov/20150001438.pdf> (last access: 4 December 2018), 2013.
- 650 Massart, S., A. Agustí-Panareda, J. Heymann, M. Buchwitz, F. Chevallier, M. Reuter, M. Hilker, J. P. Burrows, F. Hase, F. Desmet, D. G. Feist, and R. Kivi, 2015: Ability of the 4-D-Var analysis of the GOSAT BESD XCO<sub>2</sub> retrievals to characterize atmospheric CO<sub>2</sub> at large and synoptic scales. *Atmos. Chem. Phys.*, **16**, 1653–1671, doi:10.5194/acp-16-1653-2016
- Morino, I., Matsuzaki, T., and Shishime, A.: TCCON data from Tsukuba (JP), 125HR, Release GGG2014R2, TCCON data archive, CDIAC, <https://doi.org/10.14291/tcon.ggg2014.tsukuba02.R2>, 2017a.
- 660 Morino, I., Yokozeki, N., Matzuzaki, T., and Shishime, A.: TCCON data from Rikubetsu (JP), Release GGG2014R2, TCCON data archive, CDIAC, <https://doi.org/10.14291/tcon.ggg2014.rikubetsu01.R2>, 2017b.
- Nassar, R., Hill, T. G., McLinden, C. A., Wunch, D., Jones, D., and Crisp, D.: Quantifying CO<sub>2</sub> emissions from individual power plants from space, *Geophys. Res. Lett.*, **44**, 10045–10053, <https://doi.org/10.1002/2017GL074702>, 2017.
- 665 Notholt, J., Petri, C., Warneke, T., Deutscher, N. M., Buschmann, M., Weinzierl, C., Macatangay, R., and Grupe, P.: TCCON data from Bremen (DE), Release GGG2014R0, TCCON data archive, CDIAC, <https://doi.org/10.14291/tcon.ggg2014.bremen01.R0/1149275>, 2017.
- Notholt, J., Warneke, T., Petri, C., Deutscher, N. M., Weinzierl, C., Palm, M., & Buschmann, M. (2019). *TCCON data from Ny Ålesund, Spitsbergen (NO)*, Release GGG2014.R1 (Version R1) [Data set]. CaltechDATA. <https://doi.org/10.14291/TCCON.GGG2014.NYALESUND01.R1>
- 670 O'Brien, D. M. and Rayner, P. J.: Global observations of the carbon budget 2. CO<sub>2</sub> column from differential absorption of reflected sunlight in the 1.61 μm band of CO<sub>2</sub>, *J. Geophys. Res.*, **107**, ACH6-1, doi:10.1029/2001JD000617, 2002.
- O'Dell, C. W., Eldering, A., Wennberg, P. O., Crisp, D., Gunson, M. R., Fisher, B., Frankenberg, C., Kiel, M., Lindqvist, H., Mandrake, L., Merrelli, A., Natraj, V., Nelson, R. R., Osterman, G. B.,

- Payne, V. H., Taylor, T. E., Wunch, D., Drouin, B. J., Oyafuso, F., Chang, A., McDuffie, J., Smyth, M., Baker, D. F., Basu, S., Chevallier, F., Crowell, S. M. R., Feng, L., Palmer, P. I., Dubey, M., García, O. E., Griffith, D. W. T., Hase, F., Iraci, L. T., Kivi, R., Morino, I., Notholt, J., Ohyama, H., Petri, C., Roehl, C. M., Sha, M. K., Strong, K., Sussmann, R., Te, Y., Uchino, O., and Velazco, V. A.: Improved retrievals of carbon dioxide from Orbiting Carbon Observatory-2 with the version 8 ACOS algorithm, *Atmos. Meas. Tech.*, 11, 6539–6576, <https://doi.org/10.5194/amt-11-6539-2018>, 2018.
- 680
- Pascal, V., Buil, C., Loesel, J., Tauziede, L., Jouglet, D., and Buisson, F.: An improved microcarb dispersive instrumental concept for the measurement of greenhouse gases concentration in the atmosphere, *Proc. SPIE* 10563, 10563K-1–10563K-9, <https://doi.org/10.1117/12.2304219>, 2017.
- 685
- Peylin, P., Law, R. M., Gurney, K. R., Chevallier, F., Jacobson, A. R., Maki, T., Niwa, Y., Patra, P. K., Peters, W., Rayner, P. J., Rödenbeck, C., van der Laan-Luijkx, I. T., and Zhang, X.: Global atmospheric carbon budget: results from an ensemble of atmospheric CO<sub>2</sub> inversions, *Biogeosciences*, 10, 6699–6720, <https://doi.org/10.5194/bg-10-6699-2013>, 2013.
- 690
- Pinty, B., Janssens-Maenhout, G., Dowell, M., Zunker, H., Brunhes, T., Ciais, P., Dee, D., Denier van der Gon, H. A. C., Dolman, H., Drinkwater, M., Engelen, R., Heimann, M., Holmlund, K., Husband, R., Kentarchos, A., Meyer, A., Palmer, P., Scholze, M.: An operational anthropogenic CO<sub>2</sub> emissions monitoring & verification support capacity - Baseline requirements, Model components and functional architecture, European Commission Joint Research Centre, EUR 28736 EN, doi:10.2760/39384, 2017.
- 695
- Reuter, M., Buchwitz, M., Schneising, O., Noël, S., Rozanov, V., Bovensmann, H., and Burrows, J. P.: A Fast Atmospheric Trace Gas Retrieval for Hyperspectral Instruments Approximating Multiple Scattering-Part 1: Radiative Transfer and a Potential OCO-2 XCO<sub>2</sub> Retrieval Setup, *Remote Sens.*, 9, 1159, <https://doi.org/10.3390/rs9111159>, 2017.
- 700
- Reuter, M., Buchwitz, M., Schneising, O., Krautwurst, S., O'Dell, C. W., Richter, A., Bovensmann, H., and Burrows, J. P.: Towards monitoring localized CO<sub>2</sub> emissions from space: co-located regional CO<sub>2</sub> and NO<sub>2</sub> enhancements observed by the OCO-2 and S5P satellites, *Atmos. Chem. Phys.*, 19, 9371–9383, <https://doi.org/10.5194/acp-19-9371-2019>, 2019.
- 705
- Rodgers, C. D. (1990), Characterization and error analysis of profiles retrieved from remote sounding measurements, *J. Geophys. Res.*, 95, 5587–5595.
- Rumelhart, D. E., Hinton, G. E., and Williams, R. J.: Learning internal representations by error propagation, in: *Parallel Distributed Processing: Explorations in the Microstructure of Cognition*, Vol. 1: Foundations, MIT Press, Cambridge, MA, USA, 318-362, doi:10.5555/104279.104293, 1986.
- 710
- Salstein, D. A., Ponte, R. M., and Cady-Pereira, K.: Uncertainties in atmospheric surface pressure fields from global analyses, *J. Geophys. Res.*, 113, D14107, <https://doi.org/10.1029/2007JD009531>, 2008.
- 715
- Sherlock, V., Connor, B. J., Robinson, J., Shiona, H., Smale, D., and Pollard, D.: TCCON data from Lauder (NZ), 125HR, Release GGG2014R0, TCCON data archive, CDIAC, <https://doi.org/10.14291/tcon.ggg2014.lauder02.R0/1149298>, 2017.
- Shiomi, K., Kawakami, S., Ohyama, H., Arai, K., Okumura, H., Taura, C., Fukamachi, T., and Sakashita, M.: TCCON data from Saga (JP), Release GGG2014R0, TCCON data archive, CDIAC, <https://doi.org/10.14291/tcon.ggg2014.saga01.R0/1149283>, 2017.
- 720
- Sierk, B., Bézy, J.-L., Löscher, A., and Meijer, Y.: The European CO<sub>2</sub> Monitoring Mission: observing anthropogenic greenhouse gas emissions from space, <https://doi.org/10.1117/12.2535941>, 2019



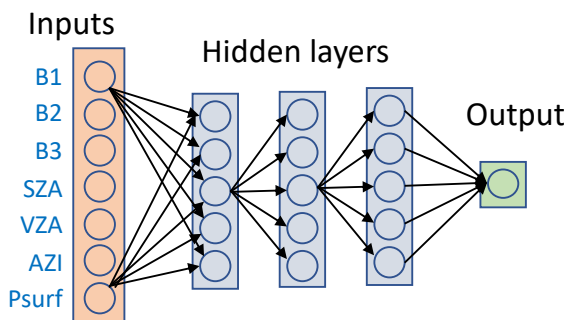
- Strong, K., Roche, S., Franklin, J. E., Mendonca, J., Lutsch, E., Weaver, D., Fogal, P., Drummond, J., Batchelor, R., and Lindenmaier, R.: TCCON data from Eureka (CA), Release GGG2014R3, TCCON data archive, CDIAC, <https://doi.org/10.14291/tcon.ggg2014.eureka01.R3>, 2017.
- 725 Suarez, M. J., Rienecker, M. M., Todling, R., Bacmeister, J., Takacs, L., Liu, H. C., Gu, W., Sienkiewicz, M., Koster, R. D., and Gelaro, R.: The GEOS-5 Data Assimilation System-Documentation of Versions 5.0.1, 5.1.0, and 5.2.0, Tech. rep., NASA Goddard Spaceflight Center, Greenbelt, MD, USA, available at: <https://ntrs.nasa.gov/archive/nasa/casi.ntrs.nasa.gov/20120011955.pdf> (last access: 4 December 2018), 2008.
- 730 Sussmann, R. and Rettinger, M.: TCCON data from Garmisch (DE), Release GGG2014R2, TCCON data archive, CDIAC, <https://doi.org/10.14291/tcon.ggg2014.garmisch01.R2>, 2017a.
- Sussmann, R. and Rettinger, M.: TCCON data from Zugspitze (DE), Release GGG2014R1, TCCON data archive, CDIAC, <https://doi.org/10.14291/tcon.ggg2014.zugspitze01.R1>, 2017b.
- Te, Y., Jeseck, P., and Janssen, C.: TCCON data from Paris (FR), Release GGG2014R0, TCCON data archive, CDIAC, <https://doi.org/10.14291/tcon.ggg2014.paris01.R0/1149279>, 2017.
- 735 Taylor et al., 2020: OCO-3 early mission operations and initial (vEarly) XCO<sub>2</sub> and SIF retrievals. Remote Sensing of Environment. <https://doi.org/10.1016/j.rse.2020.112032>
- Warneke, T., Messerschmidt, J., Notholt, J., Weinzierl, C., Deutscher, N. M., Petri, C., Grupe, P., Vuillemin, C., Truong, F., Schmidt, M., Ramonet, M., and Parmentier, E.: TCCON data from Orléans (FR), Release GGG2014R1, TCCON data archive, CDIAC, <https://doi.org/10.14291/tcon.ggg2014.orleans01.R1>, 2017.
- 740 Wennberg, P. O., Roehl, C., Wunch, D., Toon, G. C., Blavier, J.-F., Washenfelder, R., Keppel-Aleks, G., Allen, N., and Ayers, J.: TCCON data from Park Falls (US), Release GGG2014R1, TCCON data archive, CDIAC, <https://doi.org/10.14291/tcon.ggg2014.parkfalls01.R1>, 2017a.
- 745 Wennberg, P. O., Wunch, D., Roehl, C., Blavier, J.-F., Toon, G. C., and Allen, N.: TCCON data from Caltech (US), Release GGG2014R1, TCCON data archive, CDIAC, <https://doi.org/10.14291/tcon.ggg2014.pasadena01.R1/1182415>, 2017b.
- Wennberg, P. O., Wunch, D., Roehl, C., Blavier, J.-F., Toon, G. C., Allen, N., Dowell, P., Teske, K., Martin, C., and Martin, J.: TCCON data from Lamont (US), Release GGG2014R1, TCCON data archive, hosted by CDIAC, <https://doi.org/10.14291/tcon.ggg2014.lamont01.R1/1255070>, 2017c.
- 750 Wu, L., Hasekamp, O., Hu, H., Landgraf, J., Butz, A., aan de Brugh, J., Aben, I., Pollard, D. F., Griffith, D. W. T., Feist, D. G., Koshelev, D., Hase, F., Toon, G. C., Ohyama, H., Morino, I., Notholt, J., Shiomi, K., Iraci, L., Schneider, M., de Mazière, M., Sussmann, R., Kivi, R., Warneke, T., Goo, T.-Y., and Tè, Y.: Carbon dioxide retrieval from OCO-2 satellite observations using the RemoTeC algorithm and validation with TCCON measurements, *Atmos. Meas. Tech.*, 11, 3111–3130, <https://doi.org/10.5194/amt-11-3111-2018>, 2018.
- Wunch, D., Toon, G. C., Blavier, J.-F. L., Washenfelder, R. A., Notholt, J., Connor, B. J., Griffith, D. W., Sherlock, V., and Wennberg, P. O.: The total carbon column observing network, *Philos. T. R. Soc. A*, 369, 2087–2112, <https://doi.org/10.1098/rsta.2010.0240>, 2011a.
- 760 Wunch, D., Wennberg, P. O., Toon, G. C., Connor, B. J., Fisher, B., Osterman, G. B., Frankenberg, C., Mandrake, L., O'Dell, C., Ahonen, P., Biraud, S. C., Castano, R., Cressie, N., Crisp, D., Deutscher, N. M., Eldering, A., Fisher, M. L., Griffith, D. W. T., Gunson, M., Heikkinen, P., Keppel-Aleks, G., Kyrö, E., Lindenmaier, R., Macatangay, R., Mendonca, J., Messerschmidt, J., Miller, C. E., Morino, I., Notholt, J., Oyafuso, F. A., Rettinger, M., Robinson, J., Roehl, C. M., Salawitch, R. J., Sherlock, V., Strong, K., Sussmann, R., Tanaka, T., Thompson, D. R., Uchino, O., Warneke, T., and Wofsy, S. C.: A method for evaluating bias in global measurements of CO<sub>2</sub> total
- 765

columns from space, *Atmos. Chem. Phys.*, 11, 12317–12337, <https://doi.org/10.5194/acp-11-12317-2011>, 2011b.

- 770 Wunch, D., Wennberg, P. O., Osterman, G., Fisher, B., Naylor, B., Roehl, C. M., O'Dell, C., Mandrake, L., Viatte, C., Kiel, M., Griffith, D. W. T., Deutscher, N. M., Velazco, V. A., Notholt, J., Warneke, T., Petri, C., De Maziere, M., Sha, M. K., Sussmann, R., Rettinger, M., Pollard, D., Robinson, J., Morino, I., Uchino, O., Hase, F., Blumenstock, T., Feist, D. G., Arnold, S. G., Strong, K., Mendonca, J., Kivi, R., Heikkinen, P., Iraci, L., Podolske, J., Hillyard, P. W., Kawakami, S.,
- 775 Dubey, M. K., Parker, H. A., Sepulveda, E., García, O. E., Te, Y., Jeseck, P., Gunson, M. R., Crisp, D., and Eldering, A.: Comparisons of the Orbiting Carbon Observatory-2 (OCO-2) XCO<sub>2</sub> measurements with TCCON, *Atmos. Meas. Tech.*, 10, 2209–2238, <https://doi.org/10.5194/amt10-2209-2017>, 2017.
- 780 Yokota, T., Yoshida, Y., Eguchi, N., Ota, Y., Tanaka, T., Watanabe, H., and Maksyutov, S.: Global concentrations of CO<sub>2</sub> and CH<sub>4</sub> retrieved from GOSAT: First preliminary results, *Scientific Online Letters on the Atmosphere*, 5(1), 160-163, <https://doi.org/10.2151/sola.2009-041>, 2009.

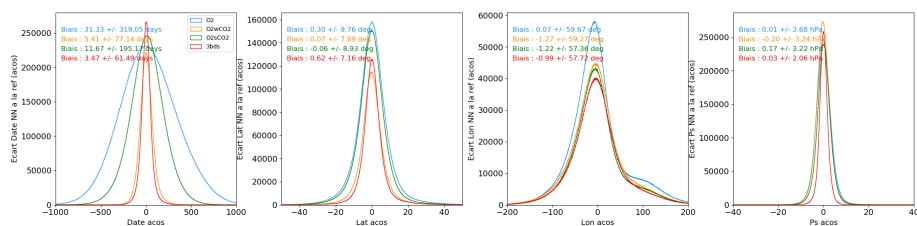
Figures and Tables

785



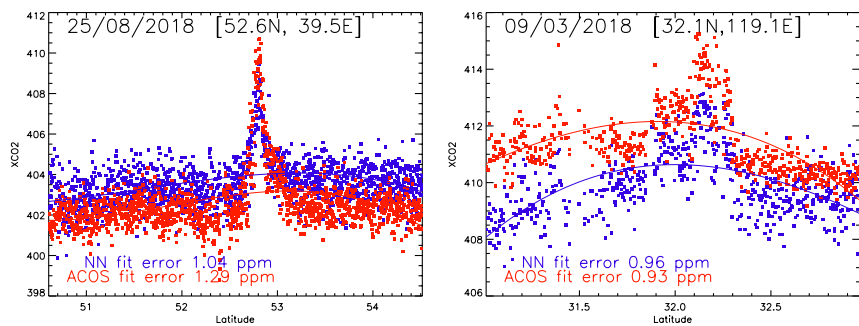
**Figure 1:** Graphical representation of the NN used in this paper. The outputs from all neurons feed in all neurons of the next layer. There is a variable number of hidden layers. Similarly, there is a choice on the number of neurons in each layer. Not all inputs are used for the various versions of the NN that are described in this paper.

790



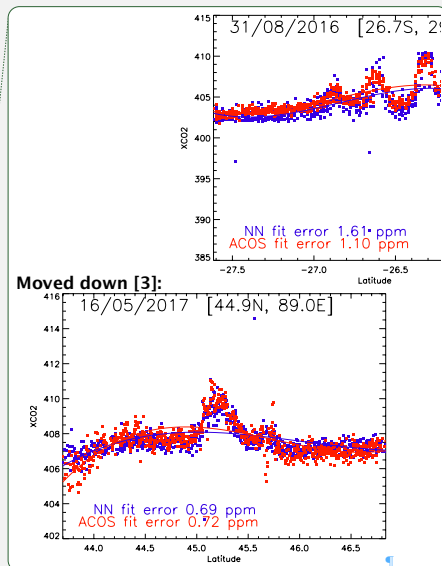
**Figure 2:** Analysis of the ability of the NN to estimate the date, location (latitude, longitude) and surface pressure from the input spectra and observation geometry. The graphs show the histograms of the differences between the NN estimate and the true value. Several versions of the NN were analyzed using either all three bands (red), only the wCO<sub>2</sub> and O<sub>2</sub> bands (orange), sCO<sub>2</sub> and O<sub>2</sub> (green) and only the O<sub>2</sub> band (blue).

795

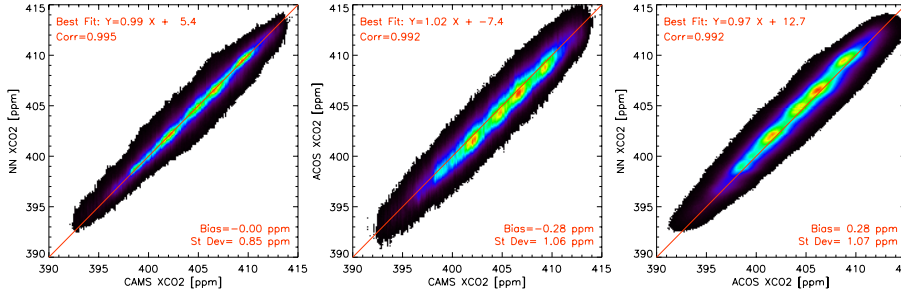


**Figure 3:** Two examples of XCO<sub>2</sub> plumes that are captured by the ACOS bias-corrected XCO<sub>2</sub> estimates. These were not shown by the first version of the NN algorithm (an example shown in Figure A1), but are well captured by the second version that does not use the wCO<sub>2</sub> band (shown here). The NN estimates are in blue whereas the ACOS estimates are in red. The lines are simple polynomial fits on the XCO<sub>2</sub> estimates and

800

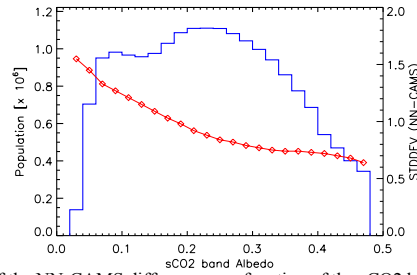


do not aim at capturing the plume signature. [These cases were identified and discussed in Reuter et al \(2019\)](#)



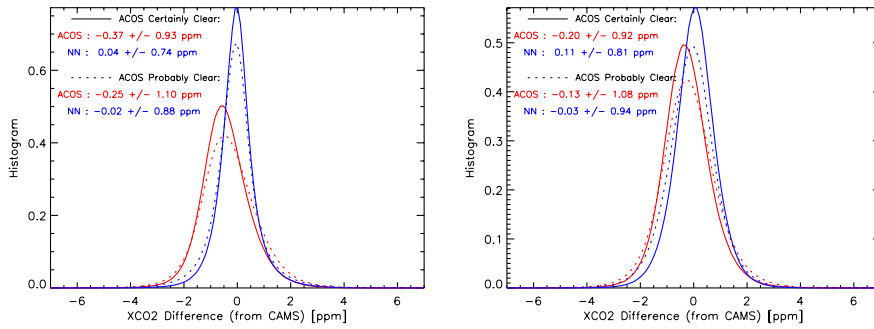
810 **Figure 4:** Inter-comparison of XCO<sub>2</sub> estimated from CAMS, ACOS, and the NN. The density histogram is based on nadir observations from February 2015 do December 2019. A similar figure for the glint cases is shown in the supplementary figure A3.

815



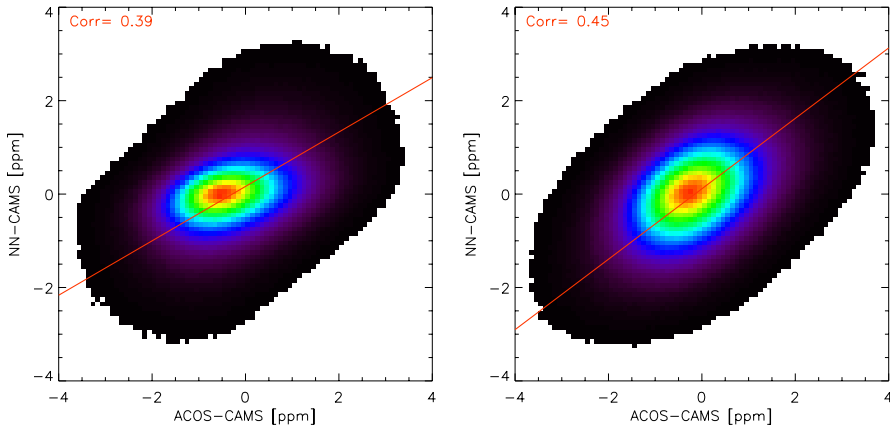
**Figure 5:** Standard deviation of the NN-CAMS difference as a function of the sCO<sub>2</sub> band albedo (red, right scale). The computation is made over 0.02 bins, the population of which is shown by the blue line (left scale).

820



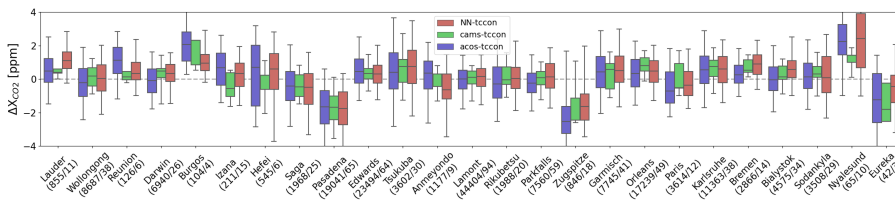
**Figure 6:** Histogram of the differences between either one of the two satellite datasets and the CAMS model. We distinguish cases when the flag *cloud\_flag\_idp* is "certainly clear" and "probably clear". The left figure is for the nadir dataset, whereas the right figure is for the glint.

825



**Figure 7:** Density histogram of the innovation, i.e. the difference between the satellite product and the model estimates. differences between either one of the two satellite datasets and the CAMS model. The red line shows the result of a linear fit through the datapoints aiming at a minimization of the distance to the best line. The left figure is for the nadir dataset, whereas the right figure is for the glint.

830



**Figure 8:** Statistics of the differences between the NN retrieval (red), the CAMS model (green) or the bias-corrected ACOS retrievals (blue) and the TCCON retrievals. The boxes indicate the 25-75% percentiles and the median is shown by the horizontal line within the box. The whiskers indicate the 5-95% percentiles. Stations are ordered by increasing latitudes. The numbers below the station name indicate the number of individual observations and coincidence days for the statistics. The references of the various TCCON observations are provided in table 1. Figure A4 provide similar results for the Glint case

840

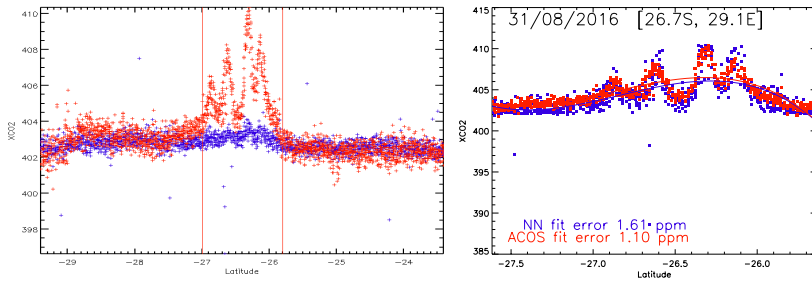
**Table 1:** TCCON stations used in this paper (Figures 8 and A4). The data have been obtained from the tccodata.org web site on Feb 4th, 2021.

Stations	[lat ; lon ]	Alt [m]	Reference	Nadir			Glint		
				CAMS / ACOS / NN	Biases	Std Dev	CAMS / ACOS / NN	Biases	Std Dev
Lauder	[-45.04 ; 169.68]	370	Sherlock et al. 2017	11 855	0.4 0.5 1.1	0.2 1.2 1.0	53 5508	0.4 0.5 0.8	0.3 1.2 1.2
Wollongong	[-34.41 ; 150.88]	30	Griffith et al. 2017b	38 8687	0.1 -0.2 0.2	0.7 1.3 1.3	23 4059	-0.6 -0.9 -0.7	1.2 1.3 1.3
Reunion Island	[-20.90 ; 55.49]	90	De Mazziere et al. 2017	6 126	0.2 1.0 0.6	0.3 1.4 1.2	6 123	-0.8 -0.5 -1.2	0.6 1.4 1.7
Darwin	[-12.43 ; 130.89]	30	Griffith et al. 2017a	26 6940	0.4 -0.1 0.4	0.7 1.1 1.0	28 7432	0.4 -0.2 0.4	0.6 1.2 1.1
Burgos	[18.53 ; 120.65]	35	Morino et al. 2018	4 104	1.3 2.0 1.5	0.7 1.3 1.0	9 789	0.3 0.6 0.2	0.4 1.3 1.1
Izana	[28.3 ; -16.48]	2300	Blumenstock et al. 2017	15 211	-0.5 0.6 0.6	0.8 1.3 1.1	6 183	-0.1 1.0 0.5	0.6 1.4 0.9
Hefei	[31.90 ; 118.67]	30	Lin et al. 2018	6 545	-0.2 0.3 0.3	1.0 2.1 2.0	9 1581	0.3 -0.5 -0.1	1.1 1.5 1.3
Saga	[33.24 ; 130.29]	10	Shiomi et al. 2017	25 1968	-0.4 -0.4 -0.3	0.8 1.5 1.6	33 2934	-0.3 -0.5 -0.8	0.6 1.4 1.4
Pasadena	[34.14 ; -118.13]	240	Wenning et al. 2017b	65 19041	-1.8 -1.7 -1.6	1.1 1.5 1.5	51 13589	-1.6 -1.2 -1.5	1.1 1.3 1.4
Edwards	[34.96 ; -117.88]	700	Iraci et al. 2017	64 23494	0.3 0.5 0.5	0.6 1.2 1.0	70 25890	0.3 0.6 0.1	0.7 1.3 1.1
Trukuba	[36.05 ; 140.12]	30	Morino et al. 2017a	30 3602	0.6 0.5 0.9	1.1 1.9 1.7	24 1535	-0.1 -0.1 -0.2	0.9 1.5 1.4
Ameyo/odo	[36.54 ; 126.33]	30	Goo et al. 2014	9 1177	-0.2 0.1 -0.6	0.7 1.4 1.5	1 396	0.2 -0.2 -0.3	0.2 1.1 0.5
Lamont	[36.6 ; -97.49]	320	Wenning et al. 2017c	94 44404	-0.0 -0.1 0.3	0.9 1.0 1.0	96 41423	0.1 -0.0 0.0	0.6 1.0 1.0
Rikubetsu	[43.46 ; 143.77]	390	Morino et al. 2017b	20 1988	0.1 -0.2 0.2	0.9 1.6 1.3	17 2192	0.5 0.3 0.3	0.5 1.3 1.7
Park Falls	[45.94 ; -90.27]	440	Wenning et al. 2017a	59 7560	-0.0 -0.2 0.3	0.8 1.0 1.2	45 5150	-0.3 -0.3 -0.4	1.0 1.2 1.2
Zugspitze	[47.42 ; 11.06]	2960	Sussmann and Rettiger 2017b	18 846	-2.0 -2.3 -1.4	1.1 1.8 1.6	9 1404	-1.0 -0.2 -0.2	1.4 1.6 1.5
Garmisch	[47.48 ; 11.06]	740	Sussmann and Rettiger 2017a	41 7745	0.3 0.4 0.8	0.9 1.5 1.5	38 7248	0.3 0.7 0.2	0.9 1.4 1.3
Orleans	[47.97 ; 2.11]	130	Warneke et al. 2017	49 17239	0.8 0.3 0.6	0.5 1.2 1.1	34 10418	0.8 0.6 0.5	0.7 1.0 1.0
Paris	[48.85 ; 2.36]	60	Te et al. 2017	12 3614	-0.0 -0.5 -0.0	0.9 1.3 1.2	14 3421	-0.6 -0.4 -0.9	1.6 1.7 1.6
Karlsruhe	[49.1 ; 8.44]	110	Hase et al. 2017	38 11363	0.6 0.6 0.8	0.7 1.4 1.3	45 8883	0.4 0.6 0.1	0.6 1.2 1.1
Bremen	[53.10 ; 8.85]	7	Notholt et al. 2017	14 2866	0.7 0.3 0.9	0.4 0.9 1.1	9 1415	1.1 0.9 0.6	1.0 1.2 1.0
Bialystok	[53.23 ; 23.02]	180	Deutscher et al. 2017	34 4575	0.3 -0.0 0.8	0.7 1.3 1.1	31 8326	0.4 0.2 0.4	0.3 1.0 1.1
Sodankylä	[67.37 ; 26.63]	190	Kivi et al. 2017	29 3508	0.4 0.2 0.3	0.8 1.3 1.5	21 4698	0.8 0.8 0.3	1.2 1.3 1.7
NV-Alesund	[78.9 ; 11.9]	20	Notholt et al. 2019	10 65	1.2 2.1 2.2	0.6 2.5 2.3	7 18	1.0 3.1 1.4	0.7 2.9 1.5
Eureka	[80.05 ; -86.42]	600	Strong et al. 2017	3 42	-1.4 -1.3 -0.5	1.0 2.0 1.9	9 429	0.6 -0.1 -0.8	1.5 2.6 1.7



Appendix

845

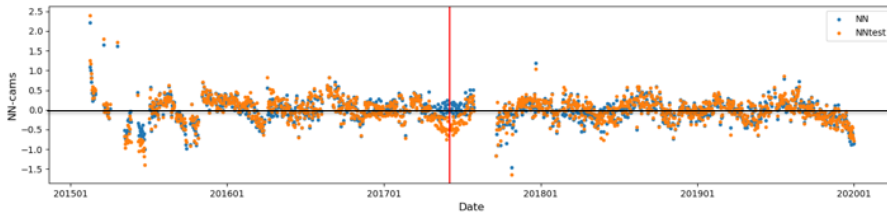


850

**Figure A1:** XCO2 estimated by the ACOS algorithm (Red) and the NN approach (Blue) as a function of latitude using its initial version as published in David et al. (2021) (left) and the new version presented in this paper (right). The ACOS product showed a number of XCO2 enhancements that are not shown by the NN estimates. The plumes are observed downwind of large coal power plants, which make these features trustworthy. The date is August 31<sup>st</sup>, 2016.

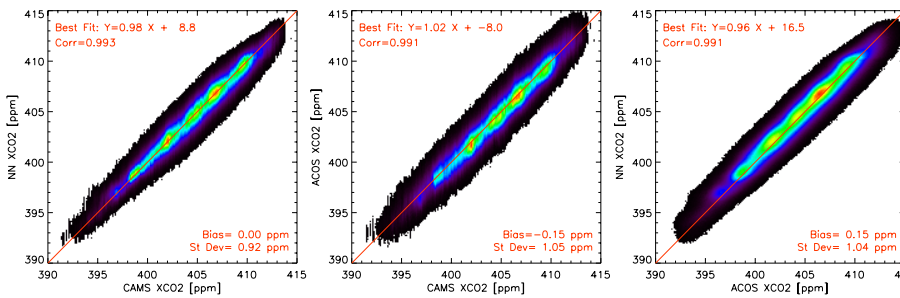
Deleted: ), as a function of latitude  
Deleted: shows

855



**Figure A2:** Mean difference, at daily scale, between the NN XCO2 estimate and the CAMS model. The blue dots show the results for the nominal training. The orange dots show the results when the training was made with a dataset biased by 1 ppm but only the observations of June 2017, the center of which is indicated by the red vertical line.

860



**Figure A3:** Same as Figure 4, but for the glint observations.

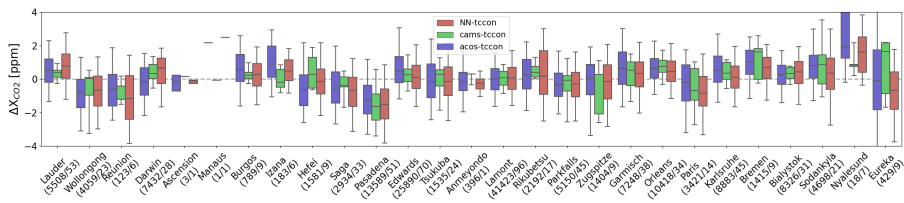
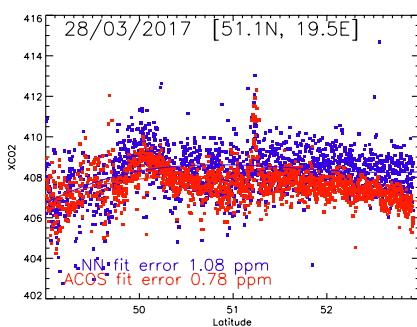
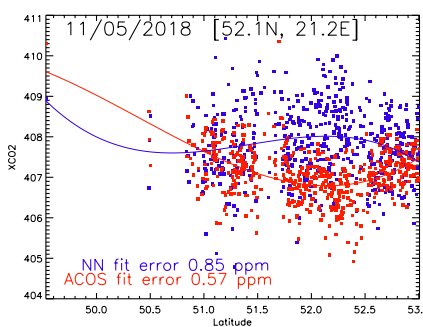


Figure A4: Same as Figure 8, but for the glint observations.

870

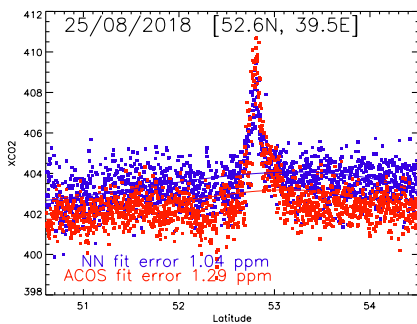
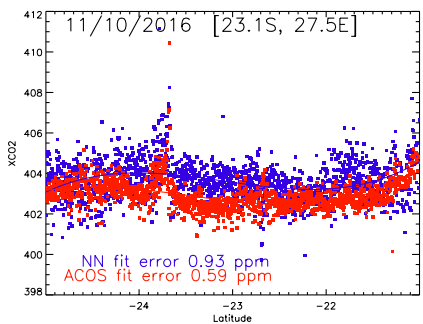
Nassar et al. 2021



Kozienice (2018/05/11)

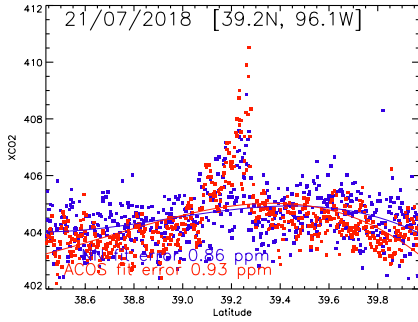
Belchatow (2017/03/28)

875

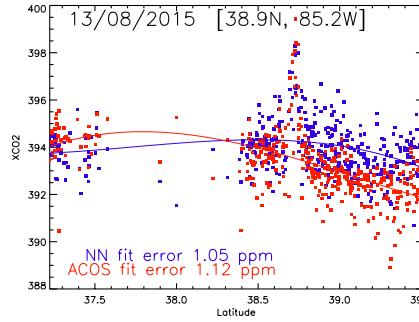


Matimba (2016/10/11)

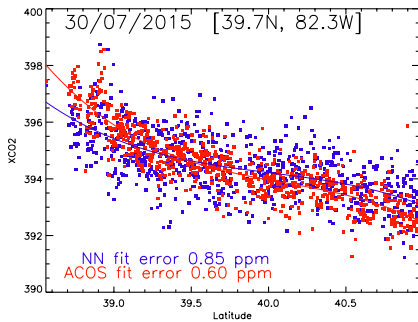
Lipetsk (2018/08/25)



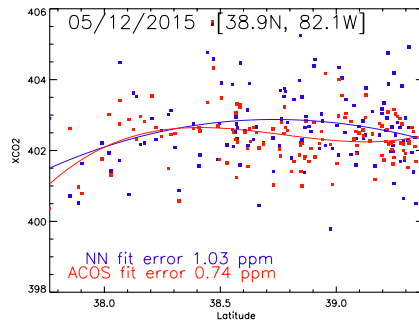
Westar (2018/07/21)



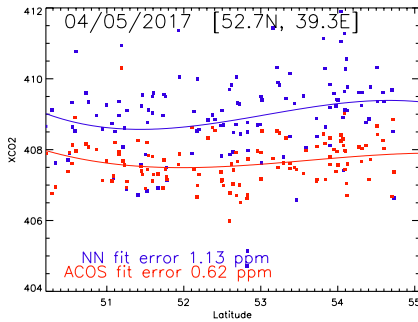
Ghent (2015/08/13)



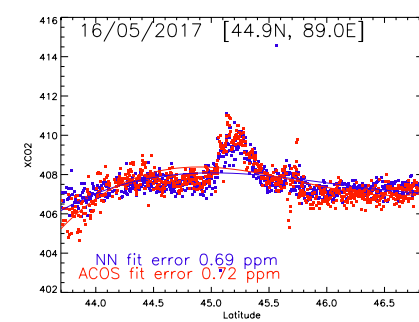
Gavin-Kyger (2015/07/31)



Amos (2015/12/05)



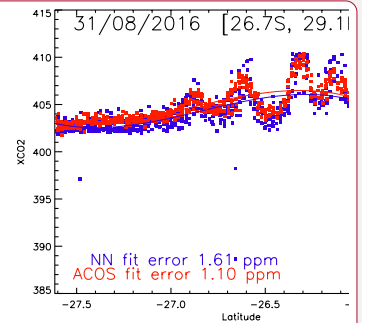
Lipetsk (2017/05/04)



HuoShaoshan (2017/05/16)

Figure A5 Examples of anthropogenic CO<sub>2</sub> plumes as seen by the OCO<sub>2</sub> instrument processed with the ACOS algorithm (red) and the Neural Network described in this paper (blue). The cases have been identified and described in Reuter et al. 2019 and Nassar et al. 2021.

Moved (insertion) [3]



Deleted:

