

Ground-based Ku-band microwave observations of ozone in the polar middle atmosphere

David A. Newnham¹, Mark A. Clilverd¹, William D. J. Clark¹, Michael Kosch,^{2,3,4} Pekka T. Verronen,^{5,6} and Alan E. E. Rogers⁷

5 ¹British Antarctic Survey, High Cross, Madingley Road, Cambridge, CB3 0ET, United Kingdom.

²Physics Department, Lancaster University, Lancaster, LA1 4YB, UK.

³South African National Space Agency (SANSA), Hospital Street, Hermanus 7200, South Africa.

⁴Department of Physics and Astronomy, University of the Western Cape, Robert Sobukwe Road, Bellville, 7535, South Africa.

⁵Sodankylä Geophysical Observatory, University of Oulu, Tähteläntie 62, 99600 Sodankylä, Finland.

10 ⁶Space and Earth Observation Centre, Finnish Meteorological Institute, P.O. Box 503, 00101, Helsinki, Finland.

⁷MIT Haystack Observatory, Route 40, Westford, MA 01886, United States.

Correspondence to: David A. Newnham (dawn@bas.ac.uk)

Abstract. Ground-based observations of 11.072 GHz atmospheric ozone (O₃) emission have been made using the Ny-Ålesund Ozone in the Mesosphere Instrument (NAOMI) at the UK Arctic Research Station (latitude 78°55'0" N, longitude 11°55'59" E), Spitsbergen. Seasonally-averaged O₃ vertical profiles in the Arctic polar mesosphere-lower thermosphere region for night-time and twilight conditions in the period 15 August 2017 to 15 March 2020 have been retrieved over the altitude range 62–98 km. NAOMI measurements are compared with corresponding, overlapping observations by the Sounding of the Atmosphere using Broadband Emission Radiometry (SABER) satellite instrument. The NAOMI and SABER [version 2.0](#) data are binned according to the SABER instrument 60-day yaw cycles into [nominal](#) 3-month ‘winter’ (15 December–15 March), 15 ‘autumn’ (15 August–15 November), and ‘summer’ (15 April–15 July) periods. The NAOMI observations show the same year-to-year and seasonal variabilities as the SABER 9.6 µm O₃ data. The winter night-time (solar zenith angle, SZA ≥ 110°) and twilight (75° ≤ SZA ≤ 110°) NAOMI and SABER 9.6 µm O₃ volume mixing ratio (VMR) profiles agree to within the measurement uncertainties. However, for autumn twilight conditions the SABER 9.6 µm O₃ secondary maximum VMR values are higher than NAOMI over altitudes 88–97 km by 47% and 59% respectively in 2017 and 2018. Comparing the two SABER 20 channels which measure O₃ at different wavelengths and use different processing schemes, the 9.6 µm O₃ autumn twilight VMR data for the three years 2017–19 are higher than the corresponding 1.27 µm measurements with the largest difference (58%) in the 65–95 km altitude range similar to the NAOMI observation. The SABER 9.6 µm O₃ summer daytime (SZA < 75°) mesospheric O₃ VMR is also consistently higher than the 1.27 µm measurement, confirming previously reported differences between the SABER 9.6 µm channel and measurements of mesospheric O₃ by other satellite instruments.

30 1 Introduction

1.1 Background information

Ozone (O_3) is an important trace species in the mesosphere and lower thermosphere, affecting atmospheric heating rates and the chemical and radiative budgets of the middle atmosphere (Brasseur & Solomon, 2005; Sinnhuber et al., 2012; Palmroth et al., 2021). The secondary O_3 maximum (Hays and Roble, 1973) near the mesopause at ~90–95 km arises from downward
35 transport and recombination of atomic oxygen (O) produced by far-UV (FUV) dissociation of molecular oxygen (O_2) in the lower thermosphere. The diurnal cycle in odd oxygen (O_x) leads to rapid interconversion at twilight between daytime O and O_3 at night. In the summer mesosphere, the abundance of odd hydrogen (HO_x) from FUV photo-dissociation of water vapour leads to a deep minimum in O_3 abundance. However, a seasonal tertiary O_3 layer forms at altitudes ~70–75 km in mid- to high latitudes when H_2O is no longer efficiently dissociated into HO_x due to high optical depths in the FUV (Marsh et al., 2001).
40 The tertiary O_3 peak in the middle mesosphere is observed from early autumn until late spring between 30° latitude and the equatorward edge of the polar-night terminator (Hartogh et al., 2004). The spatial and temporal structure of the tertiary O_3 layer in the polar winter mesosphere, and its night-time variability, has been reported (Smith et al., 2015, 2018; Sofieva et al., 2009). Mesospheric O_3 is also strongly affected by space weather processes which increase energetic particle precipitation (EPP) into the atmosphere (Baker et al., 2018). D-region ionisation due to EPP increases mesospheric HO_x and odd nitrogen
45 (NO_x) which impact on O_3 abundances (e.g., Daae et al., 2012; Andersson et al., 2014; Verronen & Lehmann, 2015; Zawedde et al., 2018). Atmospheric dynamical processes including meridional circulation, vertical diffusion, planetary and gravity wave activity, atmospheric tides, polar mesospheric cloud occurrences, and sudden stratospheric warming events also modify O_3 distributions in the middle atmosphere (e.g., Pancheva et al., 2014; Limpasuvan et al., 2016; Siskind et al., 2018; Smith-Johnsen et al., 2018).

50 1.2 Previous ozone measurements

O_3 vertical profiles in the upper mesosphere (70–100 km) from observations by nine satellite instruments have been reviewed and compared by Smith et al. (2013). More recently, O_3 profiles have been reported up to ~105 km during dark conditions and ~95 km during sunlit periods from measurements using the middle atmosphere modes of the Michelson Interferometer for
Passive Atmospheric Sounding (MIPAS). -Validation of the 10-year satellite dataset (López-Puertas et al., 2018) shows that
55 MIPAS O_3 has a positive bias of ~10% at 50–75 km and agrees with other instruments over 75–90 km to within 10% at night-time and 10–20% for daytime. Above 90 km, MIPAS daytime O_3 agrees with other instruments to 10% but at night the positive bias increases from 10% at 90 km to 20% at 95–100 km. Daytime mesospheric O_3 profiles derived from OSIRIS Infrared Imager observations of the 1.27 μm oxygen airglow band were found to have positive biases of up to 25% below 75 km and up to 50% at higher altitudes, compared to other instruments on the Odin satellite (Li et al., 2020).
60 O_3 vertical profiles are derived from the Sounding of the Atmosphere using Broadband Emission Radiometry (SABER) infrared 9.6 μm emission and 1.27 μm daytime airglow channels. However, daytime O_3 VMR from SABER 9.6 μm

measurements is ~20–50% higher than other satellite instruments over the altitude range 60–80 km although night-time observations show better agreement with <10% difference (Smith et al., 2013). Applying updated, lower night-time atomic O values to the SABER processing scheme confirms that SABER 9.6 μm daytime O_3 is too large, with implications for inferred atomic hydrogen abundances (Mlynczak et al., 2018; Kulikov et al., 2019).

Ground-based millimetre-wave (mm-wave) radiometry in the 110–250 GHz frequency range provides continuous measurements of O_3 (e.g., Hartogh et al., 2004; Daae et al., 2014; Ryan et al., 2016) over the altitude range ~20–75 km. Ground-based mm-wave measurements are of limited vertical resolution, typically ~8 km at best, but can be compared with more highly resolved O_3 profiles from overlapping balloon-borne ozonesonde observations and satellite measurements by considering the retrieval diagnostics (Ryan et al., 2016). At lower, microwave frequencies the $4_{0,4} \rightarrow 3_{1,3}$ rotational transition of $^{16}\text{O}_3$ (using the notation $J'_{K_a',K_c'} \rightarrow J''_{K_a'',K_c''}$ where J' , K_a' , and K_c' are the upper state rotational quantum numbers and J'' , K_a'' , and K_c'' are the lower state rotational quantum numbers) gives rise to a weak atmospheric line centred at 11.072 GHz. The emission line is within the 10.70–12.75 GHz frequency range of Ku-band downlinks used for direct broadcast satellite services in Europe. This has allowed ground-based microwave radiometers operating at 11.072 GHz to be developed using commercially-available Ku-band low noise block (LNB) downconverters developed for satellite receivers (Rogers et al., 2009; Tenneti et al., 2009). The atmosphere in the Ku-band (12–18 GHz) region is much less opaque than at 110–250 GHz and Doppler broadening for the 11.072 GHz line is 10–23 times smaller, allowing O_3 to be retrieved at altitudes above 75 km including the secondary O_3 layer (Newnham et al., 2019). Low-cost radiometer instruments have been constructed and operated as part of “The Mesospheric Ozone System for Atmospheric Investigations in the Classroom” (MOSAIC) educational project. O_3 partial columns for the lower mesosphere (~50–80 km) and the upper mesosphere / lower thermosphere (~80–100 km) have been determined using MOSAIC observations from mid-latitude sites and used to estimate seasonal O_3 variability near the mesopause (Rogers et al., 2012).

1.3 This work

In this work we report new, ground-based 11.072 GHz microwave radiometer measurements of the polar mesosphere and lower thermosphere from a high-latitude location at Ny-Ålesund over three years, from 2017 to 2020. O_3 vertical profiles are determined using established retrieval techniques and measurement uncertainties estimated. Seasonally-averaged O_3 profiles for night-time and twilight conditions are compared with the corresponding 9.6 μm SABER observations to investigate uncertainties and biases in the mesospheric O_3 satellite dataset. Daytime mesospheric O_3 abundances are too low to be measured using the Ku-band microwave technique. Instead, overlapping daytime and twilight SABER 9.6 μm and 1.27 μm satellite observations are compared to confirm previously-reported differences between O_3 derived from the two satellite infrared channels.

2 Methodology

The following sections describe the ground-based microwave radiometer configuration for observations of the Arctic polar atmosphere, the O₃ profile retrieval, and the method used for selecting overlapping SABER data.

95 2.1 Ground-based ozone measurements

2.1.1 Instrument configuration

The Ny-Ålesund Ozone in the Mesosphere Instrument (NAOMI) is a development of the original MOSAIC 11.072 GHz O₃ radiometer configuration of Rogers et al. (2009). For NAOMI, input signals in the frequency band 10.7–11.7 GHz are collected by a 60 cm diameter satellite TV reflector dish (Primesat “Easy Fit” EF60) and down-converted to the 950–1950 MHz output
100 range using a dual LNB feedhorn (LNBF, Star Com Communications Ku-band twin model SR-3602). An antenna beam efficiency of 0.74 is incorporated in the O₃ VMR retrieval. The beamwidth of the parabolic antenna, where microwave power is half (-3 dB) of the maximum value, is estimated to be 3.2° at the target frequency of 11.072 GHz. The LNBF outputs are filtered (Mini-Circuits VHF-740 high-pass filter, typical passband 780–2800 MHz), to minimise out-of-band interference, and attenuated. Two software defined radio (SDR) receivers (Type RTL2832U with R820T) capture a 2.5 MHz bandwidth from
105 each linear polarisation of the LNBF. Measuring both horizontal and vertical polarisation outputs of the LNBF gives a $\sqrt{2}$ improvement in signal-to-noise compared to measurements of a single polarisation. Frequency-switched spectra of the 11.072 GHz O₃ line are acquired every 60 s using an Intel® Next Unit of Computing (NUC) minicomputer. The spectral data are comprised of 256 channels, each of width 2.44 kHz, giving a total frequency bandwidth of 0.625 MHz. Frequency calibration is performed by measuring the frequency harmonic at 11.070 GHz generated by a 10 MHz oven crystal oscillator.

110

2.1.2 NAOMI observations

Ground-based atmospheric observations using NAOMI are made from the UK Arctic Research Station (latitude 78°55'0" N, longitude 11°55'59" E) at Ny-Ålesund, Spitsbergen, which is part of the Svalbard archipelago. NAOMI observations have been made from this site since 4 July 2017. The antenna assembly is mounted on the external wall of a building at a height
115 approximately 2 m above the ground. A clear, unobscured sky view is obtained with the antenna pointing at 11° elevation and azimuthal angle of 345°, with the line-of-sight NAOMI view shown in **Figure 1**. Transformation of local azimuth-elevation-range (AER) spherical coordinates for NAOMI to geodetic coordinates, specified by latitude, longitude, and altitude, used the World Geodetic System 1984 (WGS 84) reference ellipsoid. Pointing the instrument towards the north minimises pickup of interfering signals from geostationary satellites at low to mid-latitudes. Detected microwave signals from non-atmospheric
120 sources such as satellites could lead to errors in the O₃ retrieval or, in a worst case, obscure the 11.072 GHz emission line. NAOMI data were binned according to the local solar zenith angle (SZA) at 90 km into night-time (SZA > 110°), twilight (75° ≤ SZA ≤ 110°), and daytime (SZA < 75°) observations. Binned O₃ records between 15 August 2017 and 15 March 2020 were averaged for the following three periods: 15 December–15 March, 15 April–15 July, and 15 August–15 November. The

3-month periods, hereafter identified as ‘winter’, ‘summer’, and ‘autumn’ respectively, were chosen to overlap the SABER

60-day yaw cycles rather than matching meteorological definitions of the seasons. In all cases the NAOMI measurements selected for averaging occurred within 3 hours of the selected SABER observation times (see section 2.2), as well as meeting the SZA criteria at 90 km. NAOMI data were not recorded from 26 September to 14 November 2019 due to a temporary instrument fault. Averaging a smaller subset of valid observations between 29 August and 25 September 2019 produces an O₃ spectrum with poorer signal to noise compared to a complete autumn dataset but is included in the analysis for completeness.
~~NAOMI data were not recorded from 25 September 2019 to 14 November 2019 due to a temporary instrument fault. Since averaging a smaller subset of valid observations between 15 August and 24 September 2019 would produce an O₃ spectrum with poorer signal to noise than using a complete three month dataset, seasonal averages for autumn 2019 were not generated.~~

Differing seasonal meteorology has been assessed (Newnham et al., 2019) to have little impact on Ku-band microwave observations such as those made by NAOMI in polar conditions, even when viewing the atmosphere at shallow angles such as 11° elevation. Therefore, we do not expect varying tropospheric water vapour content to significantly affect the measurements and averaging process. Heavy precipitation during poor weather conditions could potentially affect the measurements and attenuate the mesospheric O₃ emission signal through microwave absorption and scattering. In future, screening for such weather events and removal of affected microwave data could yield improvements in the data quality.

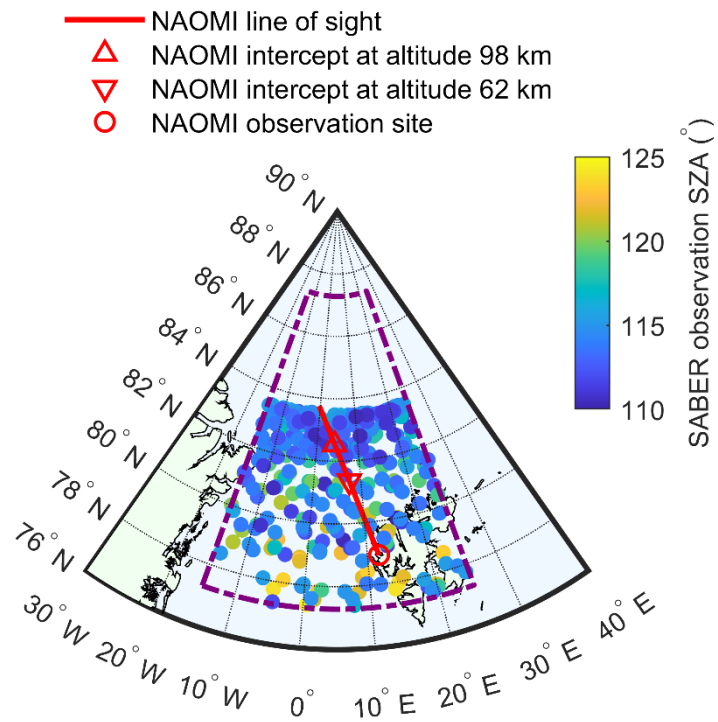
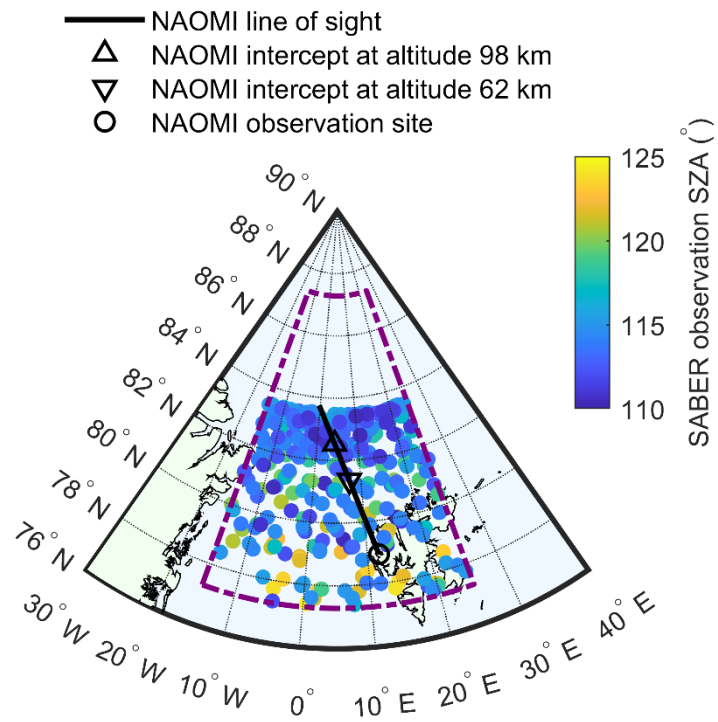


Figure 1: Map of Svalbard and the Arctic region poleward of geographic latitude 76° N and from 30° W to 40° E. The ~~red-black~~ circle shows the NAOMI ground-based location (78°55'0" N, 11°55'59" E). The ~~red-black~~ line is the projection of the line-of-sight view of NAOMI at elevation angle 11° and azimuth 345°. The dashed purple box shows the region ±20° longitude and ±5° latitude of the NAOMI intercept at altitude 90 km (82°16'57" N, 5°6'50" E) used for selecting overlapping SABER observations. The filled, coloured circles show the locations and SZAs of SABER observations within the dashed purple box during night-time conditions (SZA at altitude 90 km > 110°) in the 2017–18 winter (i.e., ~~15–29~~ December 2017–~~15–16~~ March–February 2018).

2.1.3 NAOMI ozone retrieval

Mesospheric O₃ profiles were retrieved from the NAOMI observations using version 2.2.58 of the Atmospheric Radiative Transfer Simulator (ARTS) (available at <http://www.radiativetransfer.org/>, last access: 8 August 2016) (Buehler et al., 2005, 2018; Eriksson et al., 2011) and the Qpack2 (a part of atmlab v2.2.0) software package (Eriksson et al., 2005) using the optimal estimation method (OEM) (Rodgers, 2000). The configuration of ARTS / Qpack2 for optimal estimation retrieval in the Ku-band region was described in Newnham et al. (2019) and specific details of the O₃ retrieval from NAOMI observations are given here. Adjusted parameters were O₃ VMR, frequency shift, and baseline slope. The Planck formalism was used for calculating brightness temperatures and atmospheric transmittance. Spectroscopic line parameters for ozone (O₃), hydroxyl radical (OH), water vapour (H₂O), molecular nitrogen (N₂), molecular oxygen (O₂), and carbon dioxide (CO₂) were taken from the high-resolution transmission (HITRAN) molecular absorption database (Gordon et al., 2017). For all molecules except OH the Kuntz approximation (Kuntz, 1997) to the Voigt line shape with a Van Vleck–Huber prefactor (Van Vleck and Huber, 1977) and a line cut-off of 750 GHz was used, which is valid for the pressures considered. The water vapour continuum parameterisation used the Mlawer–Tobin Clough–Kneizys–Davies (MT-CKD) model (version 2.5.2), which includes both foreign and self-broadening components (Mlawer et al., 2012). Collision-induced absorption (CIA) is the main contribution to the dry continua in the microwave range, and therefore the CIA parameterisations from the MT-CKD model (Clough et al., 2005) (version 2.5.2 for N₂ and CO₂ and version 1.0 for O₂) were applied. Diagonal elements in the covariance of the O₃ VMR profiles were fixed to 1.5 ppmv. The off-diagonal elements of the covariance linearly decrease with a correlation length of a fifth of a pressure decade (approximately 3 km). ~~Mesospheric O₃ profiles were retrieved from the NAOMI observations using version 2.2.58 of the Atmospheric Radiative Transfer Simulator (ARTS) (available at <http://www.radiativetransfer.org/>, last access: 8 August 2016) (Buehler et al., 2005, 2018; Eriksson et al., 2011) and the Qpack2 (a part of atmlab v2.2.0) software package (Eriksson et al., 2005) using the optimal estimation method (OEM) (Rodgers, 2000). The configuration and spectroscopic inputs for the ARTS / Qpack2 optimal estimation retrieval was as described in Newnham et al. (2019).~~

Vertical profiles of O₃ VMR were calculated using a 10-year dataset from WACCM-D (Verronen et al., 2016) covering 2000–2009. WACCM-D is a 3-D global atmospheric model that incorporates a detailed representation of D-region chemistry in the specified dynamics (SD) version of the Whole Atmosphere Community Climate Model (WACCM 4) (Marsh et al., 2013). The WACCM-D data at 78.632° N and 12.500° E, the model grid point closest to Ny-Ålesund, were used. Water vapour (H₂O) VMR profiles were a combination of 6 hourly, model level Modern-Era Retrospective analysis for Research and Applications, Version 2 (MERRA-2) data (download date: 18 April 2020) and WACCM-D data. MERRA-2 H₂O data were selected at pressure levels below 10⁻² hPa overlapping NAOMI observations, for the reanalysis grid point at latitude 79.000° N

180 and longitude 11.875 °E closest to the instrument location and combined with WACCM-D data for higher altitudes (i.e., at pressures below 10^{-2} hPa). Similarly, temperature profiles were constructed by combining MERRA-2 data at atmospheric levels below 10^{-2} hPa, SABER version 2.0 data (downloaded from ftp://saber.gats-inc.com/custom/Temp_O3_H2O/v2.0/; Last access: 30 April 2020) between 10^{-2} hPa and 10^{-4} hPa, and WACCM-D data at pressures below 10^{-4} hPa. The inclusion of SABER data provides more realistic mesospheric temperatures than WACCM-D averages, in particular following the sudden
185 stratospheric warmings of 12 February 2018 and 2 January 2019 when mesospheric temperatures decreased by up to 40 K.

2.2 SABER ozone data

SABER version 2.0 temperature, O₃ VMR, and water vapour VMR profiles (downloaded from ftp://saber.gats-inc.com/custom/Temp_O3_H2O/v2.0/; Last update: 30 April 2020) were used in the analysis. SABER profiles were selected where the tangent point at 90 km is within $\pm 20^\circ$ longitude and $\pm 5^\circ$ latitude of the calculated NAOMI measurement co-ordinates
190 (82°16'57" N, 5°6'50" E). The 90 km altitude is chosen as it is the approximate mesopause height and below the secondary O₃ VMR maximum. The locations of night-time SABER profiles for the 2017–18 winter are shown in **Figure 1**. The SABER observations overlap the NAOMI line-of-sight path and are more tightly clustered towards the northerly extent of 83.5° N.
The SABER observations in the defined region were then binned and averaged into night-time, twilight, and daytime datasets within the defined winter, summer, and autumn periods, as was done for the NAOMI data (section 2.1.2).
195 ~~observations in the defined region were then binned into night time, twilight, and daytime datasets for the defined winter, summer, and autumn periods, as was done for the NAOMI data.~~ The SZAs at 90 km for the binned regions, plotted in **Figure 2**, show that daytime SABER observations are restricted to the summer periods and the start of autumn whereas night-time measurements occur at the end of autumn and during winter.

3 Results

200 The NAOMI O₃ vertical profile retrieval and estimated uncertainties are presented and discussed in **Sect. 3.1**, using the 2017–18 winter night-time case as an example. The NAOMI and SABER 9.6 μm O₃ vertical profiles for winter night-time, winter twilight, and autumn twilight periods are compared in **Sect. 3.2**. SABER 9.6 μm and 1.27 μm observations overlap in the region of the NAOMI measurements during summer daytime and twilight conditions in summer and autumn, and the selected portions of the satellite datasets during 2017, 2018, and 2019 are compared in **Sect. 3.3**.

205

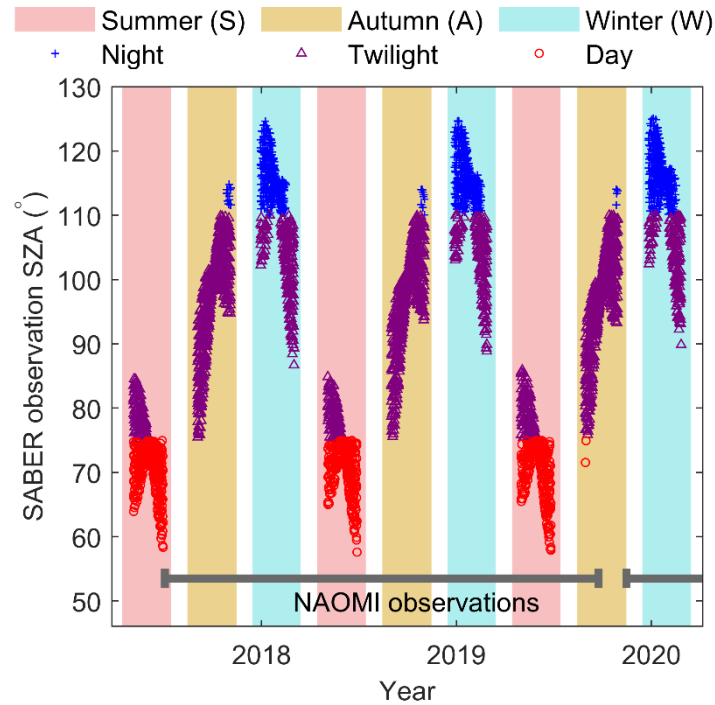
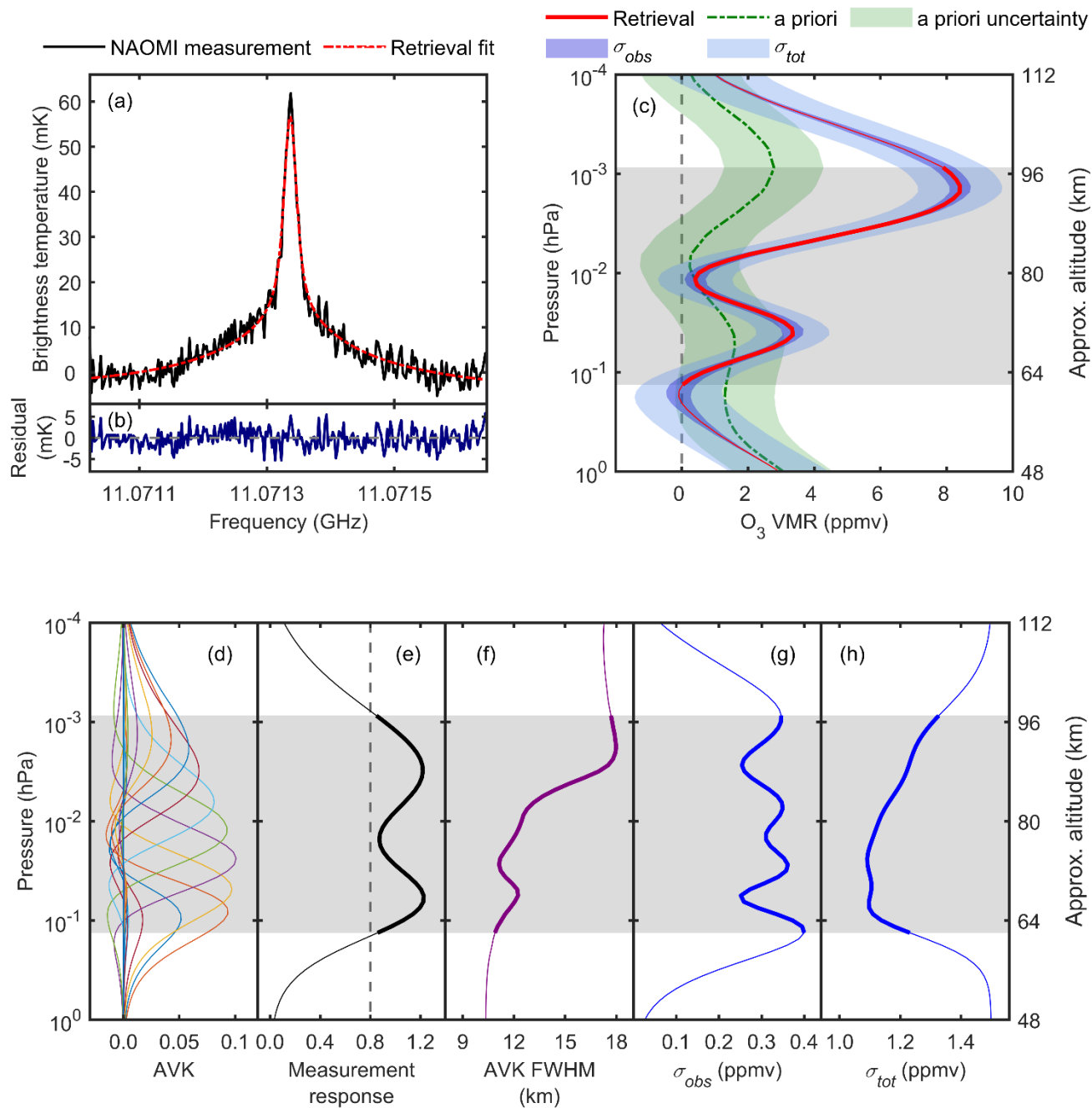


Figure 2: SZA of SABER observations at 90 km altitude with spatial overlap of the NAOMI measurements. The plotted SABER observations, covering the period from 27 March 2017 to 5 April 2020, are a subset of the full SABER dataset. SABER observations during night-time (SZA at altitude 90 km > 110°), twilight (75° ≤ SZA at altitude 90 km ≤ 110°), and daytime conditions (SZA at altitude 90 km < 75°) are shown by blue '+' symbols, purple triangles, and red circles, respectively. Red, orange, and blue shaded regions indicate nominal summer (15 April–15 July), autumn (15 August–15 November), and winter (15 December–15 March) periods, respectively. The grey horizontal bars show the periods when NAOMI observations were made.

3.1 Ozone retrieval

Ozone retrievals were performed for the winter and autumn night-time, and autumn twilight, periods where mesospheric O₃ abundances were higher than during sunlit conditions. The retrieval results for the seasonally-averaged 2017–18 winter night time NAOMI spectrum are shown in Figure 3. The retrieval results for the 2017–18 winter night time are shown in Figure 3. Figure 3a compares the final retrieval fit (red line) with the measured O₃ spectrum (black line), with the root mean square (RMS) noise of the residual differences having the same value (2.4 mK) as the RMS baseline noise level of the seasonally-averaged NAOMI spectrum, with the residual differences shown in Figure 3b in agreement to within the rms baseline noise level. Figure 3c shows the retrieved (red line) and a priori (dashed green line) O₃ VMR profiles, the a priori uncertainty (green shading), the measurement uncertainty (medium blue shading), and the total uncertainty (light blue shading). Figure 3c shows the retrieved (red line) and a priori (black line) O₃ VMR profiles. The retrieval altitude range, where

information is obtained from the observations, is indicated by the thicker solid lines and shaded grey areas and is determined
225 as described in the next paragraph. Outside of the retrieved altitude range the O₃ VMRs approach the a priori values.



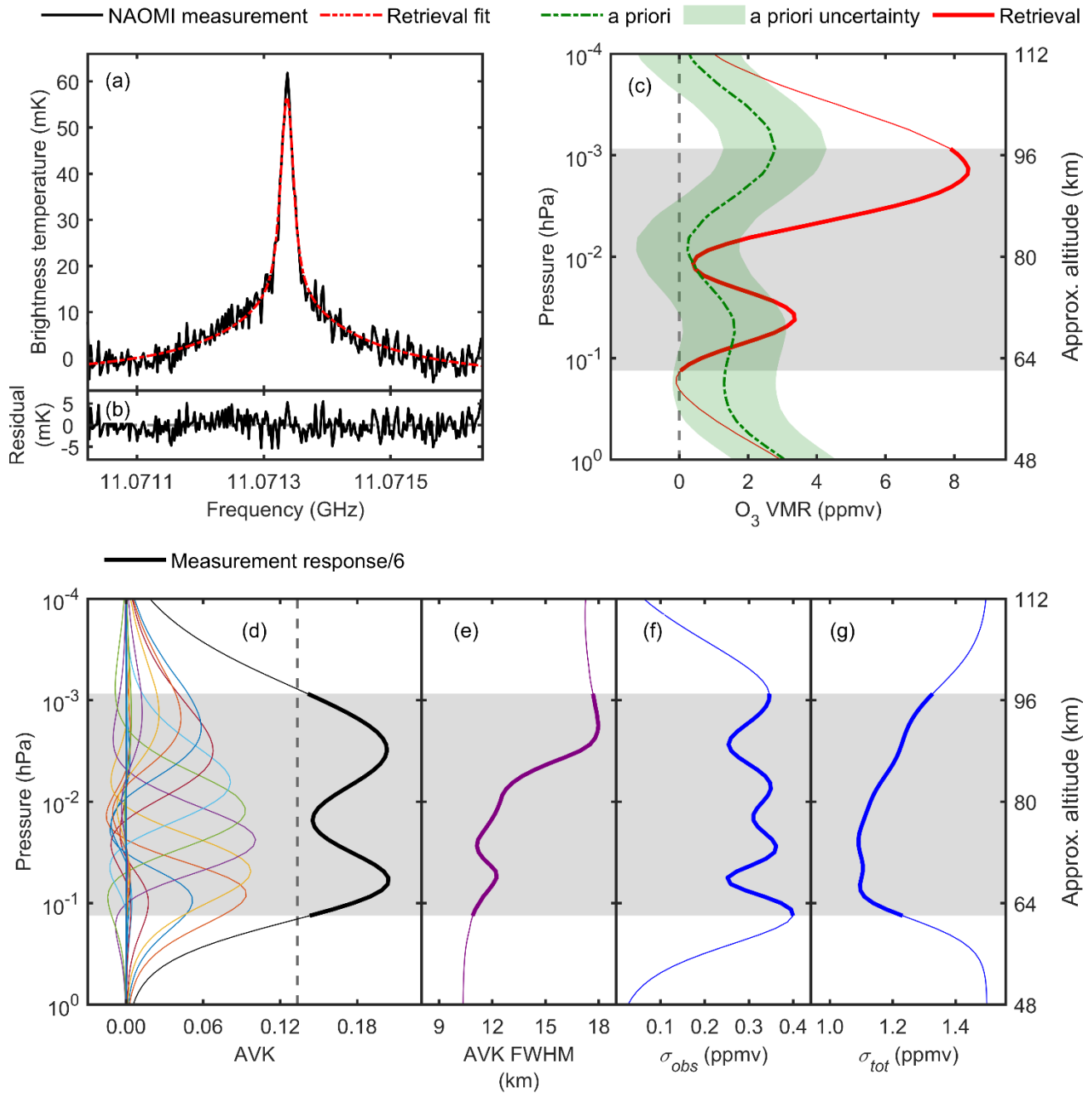


Figure 3: Ozone (O₃) retrieval for NAOMI observations during 2017–18 winter night-time (29 December 2017 – 16 February 2018, SZA at altitude 90 km > 110°) conditions. The seasonal mean O₃ spectrum and retrieval fit is shown in (a), and the residual differences are shown in (b). The a priori and retrieved O₃ volume mixing ratio (VMR) profiles are shown in (c), where the green shading represents the a priori uncertainty (± 1.5 ppmv). The medium blue and light blue shading show the profiles of O₃ VMR \pm measurement uncertainty (σ_{obs}) and O₃ VMR \pm total uncertainty (σ_{tot}) respectively. In (d) every sixth averaging kernel is shown and in (e) the measurement response (MR), with the vertical grey dashed line showing the cut-off for MR ≥ 0.8 . Panel (f) shows the full-width half maxima of each averaging kernel (AVK FWHM). The measurement uncertainty (σ_{obs}) and total uncertainty (σ_{tot}) are shown in (g) and (h) respectively. The grey shaded regions

and thicker sections of the plotted curves in (c)–(h) indicate the pressure and altitude ranges where $MR \geq 0.8$. **Figure 3:** Ozone (O_3) retrieval for NAOMI observations during 2017–18 winter night time (15 December 2017–15 March 2018, SZA at altitude 90 km $> 110^\circ$). The seasonal mean O_3 spectrum and retrieval fit is shown in (a), and the residual differences are shown in (b). The a priori and retrieved O_3 volume mixing ratio profiles are shown in (c), where the green shading represents the a priori uncertainty (± 1.5 ppmv). In (d) every sixth averaging kernel and the scaled measurement response (MR) are shown, with the vertical grey dashed line showing the cut-off for $MR \geq 0.8$. Panel (e) shows the full width half maxima of each averaging kernel (AVK FWHM). The measurement uncertainty (σ_{obs}) and total uncertainty (σ_{tot}) are shown in (f) and (g) respectively. The grey shaded regions and thicker sections of the plotted curves in (c)–(g) indicate the pressure and altitude ranges where $MR \geq 0.8$.

The averaging kernels (AVKs) for every sixth retrieved altitude are shown in **Figure 3c**. The AVKs describe the relationship between the true, a priori, and retrieved atmospheric states (Rodgers, 2000) and can be used to indicate the altitudes over which O_3 is observed and the height resolution. The sum of the AVKs at each altitude is the measurement (or total) response (MR), which represents the contribution of the measurement to the retrieval solution compared to the a priori influence at that altitude (Christensen and Eriksson, 2013). The altitude range where the retrieved O_3 profile has a high degree of independence from the a priori is identified by MR values higher than 0.8. The retrieval pressure (altitude) range where the $MR \geq 0.8$ criterion is met is 9×10^{-4} –0.13 hPa (~ 97 –62 km), shown by the thicker sections of the lines and the shaded grey areas in **Figures 3b–g**. Outside of these altitudes (i.e., below 62 km and above 97 km) MR is < 0.8 and O_3 values should be interpreted with caution as the information from the a priori becomes important. In the ideal case the AVKs would be delta functions but in practice they are peaked functions with finite widths dependent on the spatial resolution of the observing system. The full-width half-maximum (FWHM) widths of the kernels provide a measure of the vertical resolution of the retrieved profile. The FWHM values shown in **Figure 3e** indicate the altitude resolution is worst at 18.0 km at ~ 90 km and improves with decreasing altitude to 10.9 km at 62 km in the lower mesosphere. The altitude resolution can also be estimated from the degrees of freedom for signal (DOFS) for the inversion, given by the trace of the AVK matrix (Rodgers, 2000; Ryan and Walker, 2015). Dividing the retrieved altitude range (~ 35 km) by the DOFS (~ 2.9) over the same range gives an altitude resolution of 12.1 km, within the range of AVK FWHM values.

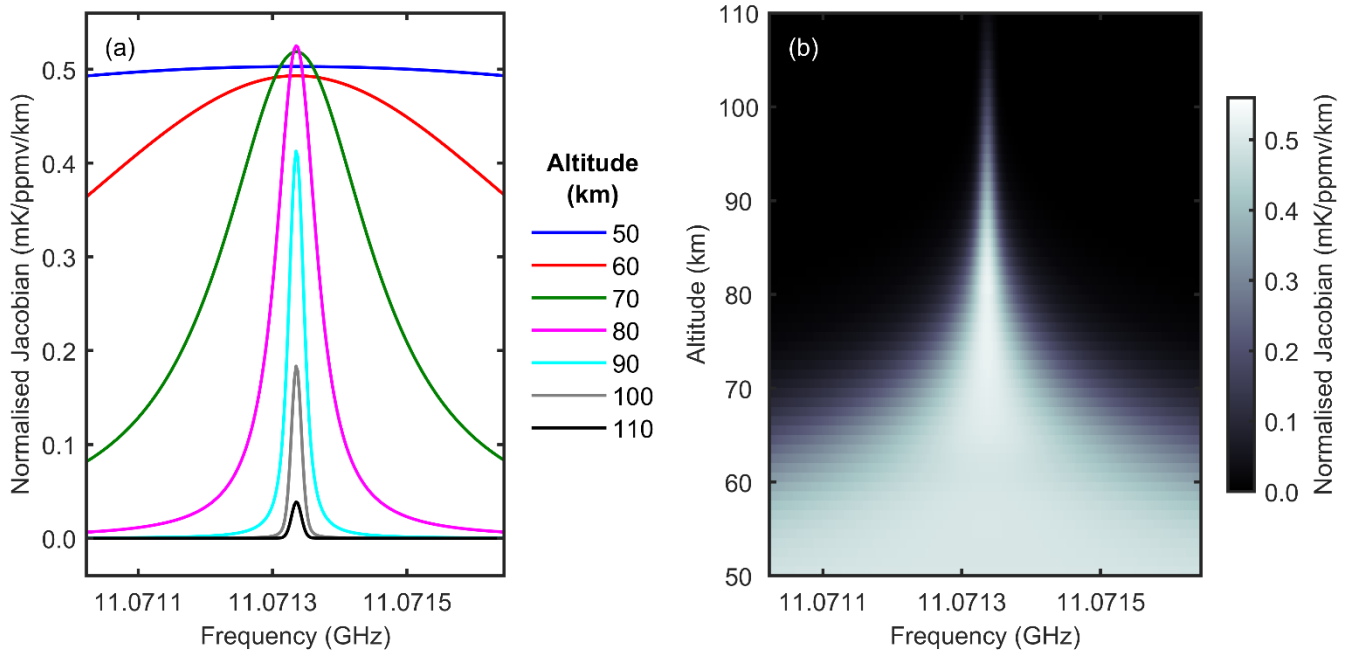


Figure 4: Jacobian matrix describing the NAOMI ozone (O_3) retrieval, normalised by the layer thickness of the retrieval grid. The data are for observations during 2017–18 winter night-time (~~15–29~~ December 2017–~~15–16~~ March–February 2018, SZA at altitude 90 km > 110°). Rows of the Jacobian matrix for selected altitude levels are plotted in (a). The grey scale in (b) indicates the values of the Jacobian matrix.

265 Observation errors (σ_{obs}) and total retrieval (observation plus smoothing) errors (σ_{tot}) from the OEM retrievals provide further estimates of the retrieved profile uncertainty. The observation errors describe how the retrieved profiles are affected by measurement noise and are shown in **Figure 3f**, with mean value 0.32 ppmv. Observation errors decrease above and below the AVK peaks as the retrieval tends towards the a priori and the measurement contribution is small in these regions. The total retrieval errors shown in **Figure 3g** are in the range 1.09–1.33 ppmv, with mean value 1.17 ppmv, and tend towards the a priori

270 uncertainty of 1.5 ppmv outside the range of AVK peaks.

The values of the Jacobian matrix of the O_3 forward model, normalised by the layer thickness of the retrieval grid, are shown in **Figure 4**. Normalised Jacobian values close to the centre of the 11.072 GHz emission line are in the range 0.4–0.5 mK (ppmv) $^{-1}\text{km}^{-1}$ at mesospheric altitudes 60–90 km. At higher altitudes, above 90 km, the gain response is weaker and spread over a narrow range of frequencies due to negligible pressure broadening of the emission line.

275

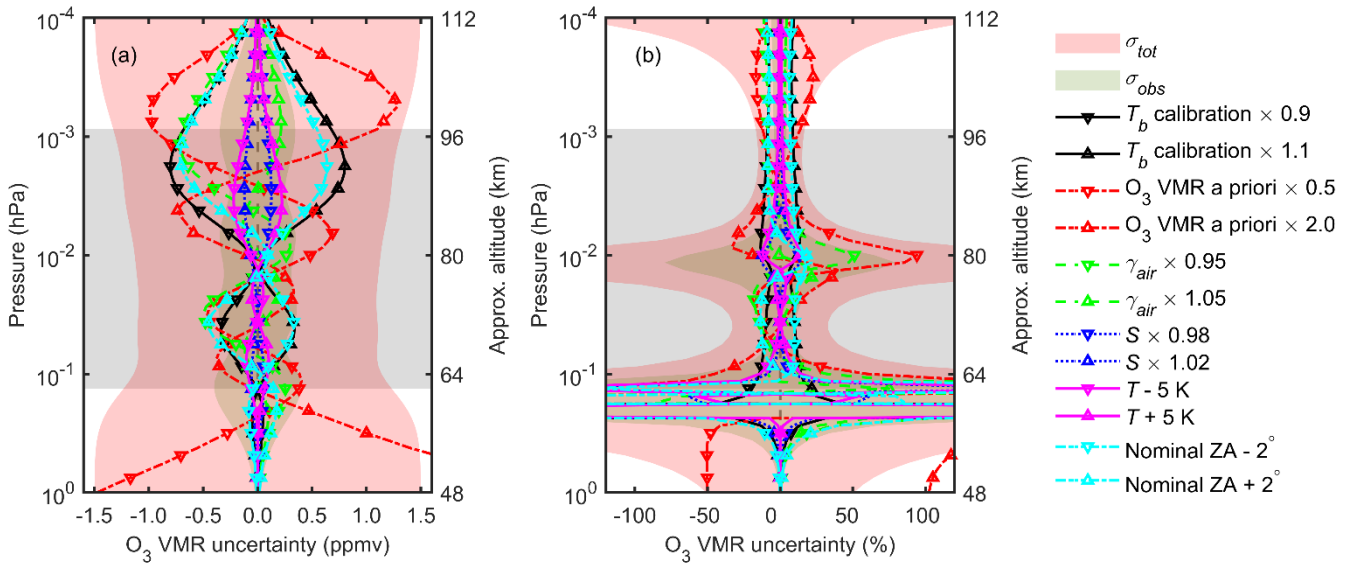


Figure 5: Estimated uncertainties in the ozone (O₃) retrieval for NAOMI observations during winter 2017–18 night-time (~~15–29~~ December 2017–~~15–16~~ March–February 2018, SZA at altitude 90 km > 110°). Absolute O₃ VMR uncertainties are shown in (a) and relative (%) uncertainties in (b). The grey shaded regions indicate the pressure and altitude ranges where MR ≥ 0.8 .

Contributions to uncertainties in the O₃ retrieval were determined by comparing the night-time, 2017–18 winter profiles from separate runs where input parameters were perturbed from their nominal values in turn. The adjusted parameters were brightness temperature calibration ($T_b \pm 10\%$ for all observed frequencies), air broadening coefficient of the O₃ line ($\gamma_{air} \pm 5\%$), O₃ line intensity ($S \pm 2\%$), and observation zenith angle (nominal ZA $\pm 2^\circ$). A priori O₃ VMR values were scaled by 0.5 and 2.0 at all pressure levels, and the temperature profile perturbed by ± 5 K. The differences between the retrieved O₃ profiles from the perturbed and nominal runs are shown in **Figures 5a and 5b** as absolute VMR (ppmv) and percentage uncertainties, respectively. The uncertainty contributions are within the envelope of total retrieval uncertainty, shown by the red shading, over the range of retrieved altitudes. The largest absolute error of ± 0.80 ppmv at ~ 90 – 95 km is from the estimated 10% radiometric calibration error, followed by zenith angle and O₃ a priori uncertainties above 80 km. The largest percentage uncertainties, exceeding 94%, are at ~ 62 km and 80 km where the VMR is close to zero.

3.2 Comparison of NAOMI and SABER mesospheric ozone profiles

The O₃ vertical profiles for winter night-time, winter twilight, and autumn twilight periods where the NAOMI and SABER 9.6 μ m datasets overlap are shown in **Figures 6, 7, and 8**, respectively. The seasonal mean SABER profiles were smoothed using the NAOMI AVK's for direct comparison with the ground-based observations, and absolute VMR and percentage

differences calculated. O₃ number densities were calculated from the NAOMI and SABER 9.6 μm O₃ VMR profiles using pressures and temperatures from the combined MERRA-2, SABER, and WACCM-D profiles constructed for the NAOMI retrievals. The number densities were integrated to determine the O₃ partial columns over altitudes 62–80 km, 80–98 km, and the full NAOMI retrieval range of 62–98 km as shown in **Figure 9**.

The night-time O₃ VMR profiles for the 2017–18, 2018–19, and 2019–20 winters are compared in **Figure 6** and **Table 1**. For NAOMI the uncertainties are total error (σ_{tot}) from the O₃ retrievals at the peak altitude and for SABER the estimated uncertainties are 20% of the peak VMR. For both NAOMI and SABER data, the secondary O₃ peak VMR values are higher in the 2017–18 and 2019–20 winters than in 2018–19. For NAOMI, the highest secondary maximum is 10.7 \pm (1.3) ppmv for the 2019–20 winter compared to 8.3(13) ppmv for the previous, 2018–19 winter. The tertiary maxima are similar for each of the three winters but the tertiary O₃ layers from NAOMI are narrower than those measured by SABER, and more sharply peaked with maximum VMR 31%–52% higher. The tertiary and secondary maxima in the NAOMI VMR profiles are at 69–70 km and 93–94 km respectively, 1–2 km lower in altitude than SABER. The largest percentage differences occur at ~64 km and 80 km due to very low (<0.2 ppmv) O₃ VMR at these altitudes.

The average O₃ profiles for the three twilight winters, presented in **Figure 7** and **Table 2**, show a similar pattern to the night-time winters with secondary O₃ peak VMR values higher in the 2017–18 and 2019–20 winters than in 2018–19. However, the secondary maximum VMRs for winter twilight are 6–26% smaller, apart from the SABER 2018–19 twilight peak which is 8% larger than the corresponding night-time value. The most significant differences between NAOMI and SABER observations are found in the autumn twilight O₃ profiles (**Figure 8** and **Table 3**) at secondary layer altitudes in the range 88–97 km. For the two years 2017 and 2018, where the most complete autumn twilight measurements are available, the NAOMI secondary maximum VMRs are 47% and 59% of the SABER peak values respectively. The largest differences are at altitudes above 88 km, in the secondary O₃ layer, whereas below 88 km the NAOMI and SABER profiles agree to within the measurement uncertainties. The 2019 autumn twilight profiles show even larger differences with no secondary O₃ peak in the NAOMI profile. The differences for the 2019 dataset may be due to the shorter period (29 August – 25 September) of NAOMI measurements compared to the previous two years (2 September – 3 November 2017 and 31 August – 1 November 2018). As well as lower signal to noise in the integrated NAOMI spectra affecting the O₃ retrieval, during the earlier autumn 2019 period more of the NAOMI observations would have occurred in sunlit conditions (mean SZA 88.6° at 90 km) compared to SABER (mean SZA 90.3° at 90 km), potentially affecting mesospheric O₃ abundances.~~The NAOMI secondary maximum VMR is 47% and 59% of the SABER peak value for the two years where these measurements were made, 2017 and 2018 respectively. The largest differences are at altitudes above 88 km, in the secondary O₃ layer, whereas below 88 km the NAOMI and SABER profiles agree to within the measurement uncertainties.~~

The differences between NAOMI and SABER appear more distinct in the higher O₃ number densities below ~80 km. NAOMI number density profiles show a distinct tertiary peak at ~70 km whereas the SABER densities increase more uniformly with decreasing altitude from 78 km to 62 km. However, the differences between NAOMI and SABER largely disappear when the

330 number densities over 62–80 km are integrated to produce partial columns, suggesting that the limited height resolution (~11–13 km) of the NAOMI retrieval is a significant factor in the profile shape over this 18 km altitude range.

Year(s)	Secondary O ₃ peak				Tertiary O ₃ peak			
	NAOMI		SABER		NAOMI		SABER	
	O ₃ VMR (ppmv)	Altitude (km)	O ₃ VMR (ppmv)	Altitude (km)	O ₃ VMR (ppmv)	Altitude (km)	O ₃ VMR (ppmv)	Altitude (km)
2017–18	8.4 ±(1.3)	94	12.0 ±(2.4)	95	3.4 ±(1.1)	70	2.6 ±(0.5)	71
2018–19	8.3 ±(1.3)	94	7.2 ±(1.4)	95	3.5 ±(1.1)	69	2.3 ±(0.5)	70
2019–20	10.7 ±(1.3)	93	11.9 ±(2.4)	94	3.8 ±(1.1)	69	2.7 ±(0.5)	72

335 **Table 1:** Secondary and tertiary ozone peak VMR and altitudes from NAOMI and SABER 9.6 μm observations during winter night-time (within 15 December–15 March, SZA at altitude 90 km > 110°) for 2017–18, 2018–19, and 2019–20. ± figures after the VMR values are uncertainties.~~The figures in parentheses after the VMR values are uncertainties.~~

340

Year(s)	Secondary O ₃ peak				Tertiary O ₃ peak			
	NAOMI		SABER		NAOMI		SABER	
	O ₃ VMR (ppmv)	Altitude (km)	O ₃ VMR (ppmv)	Altitude (km)	O ₃ VMR (ppmv)	Altitude (km)	O ₃ VMR (ppmv)	Altitude (km)
2017–18	7.9 ±(1.3)	94	8.8 ±(1.8)	94	4.0 ±(1.1)	70	2.7 ±(0.5)	73
2018–19	6.9 ±(1.3)	94	7.8 ±(1.6)	95	3.0 ±(1.1)	71	2.1 ±(0.4)	69
2019–20	9.5 ±(1.3)	94	10.7 ±(2.1)	95	3.8 ±(1.1)	70	2.9 ±(0.5)	73

Table 2: Secondary and tertiary ozone peak VMR and altitudes from NAOMI and SABER 9.6 μm observations during winter twilight (within 15 December–15 March, 75° ≤ SZA at altitude 90 km ≤ 110°) for 2017–18, 2018–19, and 2019–20. ± figures after the VMR values are uncertainties.~~The figures in parentheses after the VMR values are uncertainties.~~

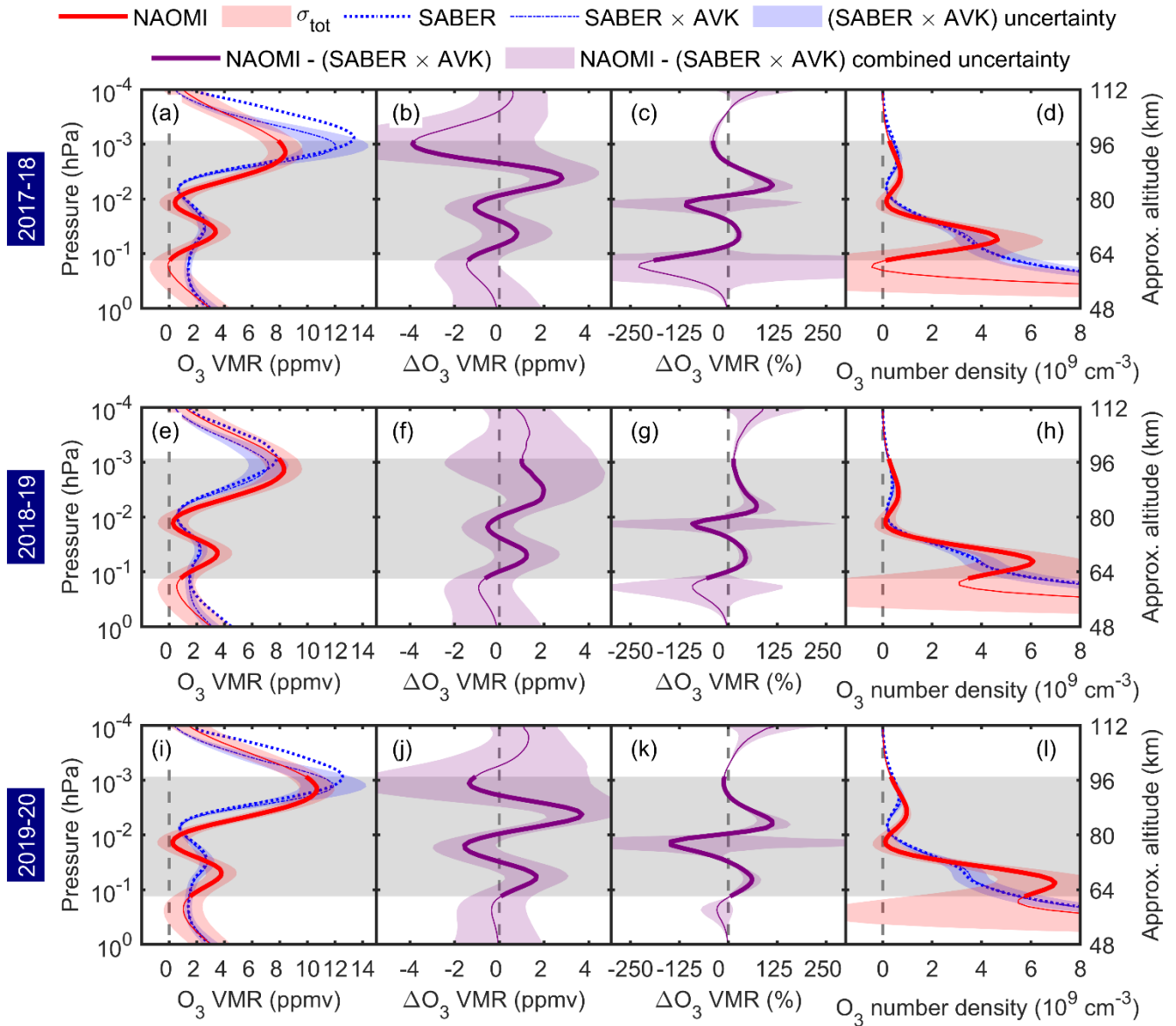


Figure 6: Mean ozone vertical profiles from NAOMI and SABER 9.6 μm observations during winter night-time (within 15 December–15 March, SZA at altitude 90 km > 110°) in 2017–18 (a–d), 2018–19 (e–h), and 2019–20 (i–l). The second and third columns give the absolute and relative (%) differences (NAOMI minus SABER 9.6 μm). The red, blue, and purple shading are the estimated uncertainties of the plotted parameters. The grey shaded regions and thicker sections of the plotted curves indicate the pressure and altitude ranges where $\text{MR} \geq 0.8$.

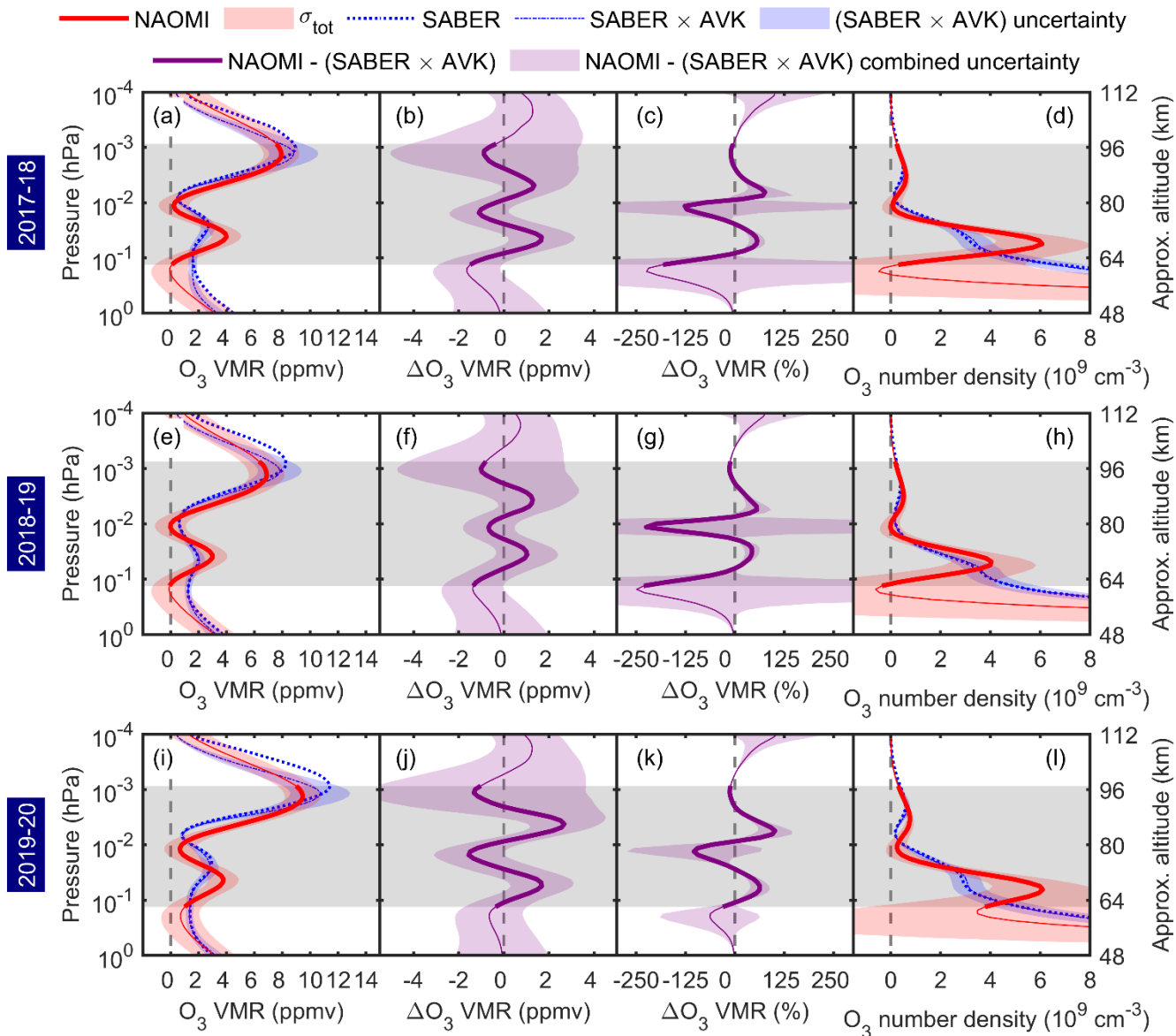
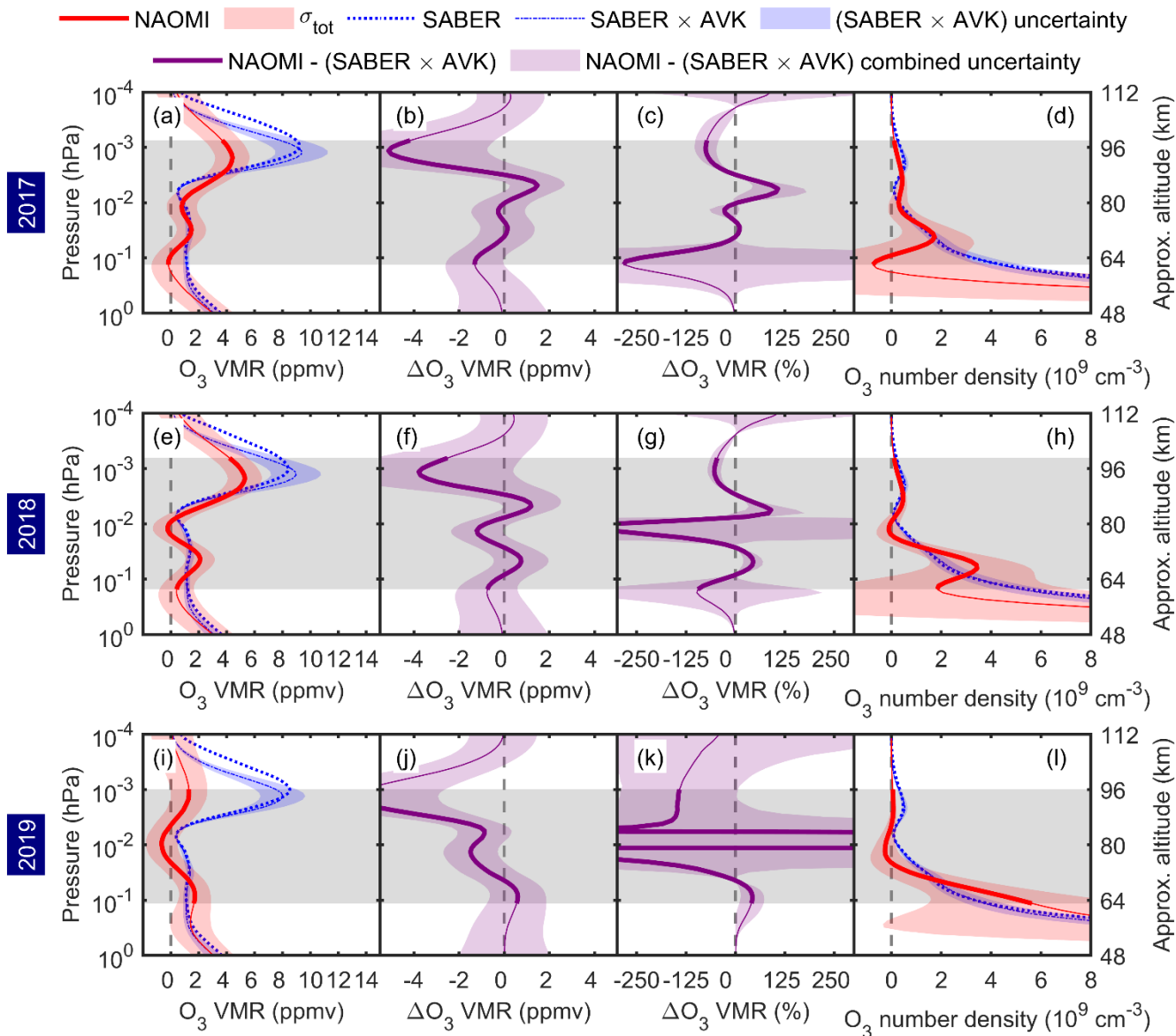


Figure 7: Mean ozone vertical profiles from NAOMI and SABER 9.6 μm observations during winter twilight (within 15 December–15 March, $75^\circ \leq \text{SZA}$ at altitude 90 km \leq 110°) in 2017–18 (a–d), 2018–19 (e–h), and 2019–20 (i–l). The second and third columns give the absolute and relative (%) differences (NAOMI minus SABER 9.6 μm). The red, blue, and purple shading are the estimated uncertainties of the plotted parameters. The grey shaded regions and thicker sections of the plotted curves indicate the pressure and altitude ranges where $\text{MR} \geq 0.8$.

365

Year(s)	Secondary O ₃ peak				Tertiary O ₃ peak			
	NAOMI		SABER		NAOMI		SABER	
	O ₃ VMR (ppmv)	Altitude (km)	O ₃ VMR (ppmv)	Altitude (km)	O ₃ VMR (ppmv)	Altitude (km)	O ₃ VMR (ppmv)	Altitude (km)
2017	4.4 ±(1.2)	93	9.4 ±(1.9)	95	1.5 ±(1.0)	72	1.3 ±(0.3)	71
2018	5.3 ±(1.2)	93	9.0 ±(1.8)	94	2.1 ±(1.0)	70	1.4 ±(0.3)	72
<u>2019</u>	<u>1.3±1.3</u>	<u>95</u>	<u>8.0±1.6</u>	<u>94</u>	<u>1.7±1.1</u>	<u>65</u>	<u>1.4±0.3</u>	<u>72</u>

Table 3: Secondary and tertiary ozone peak VMR and altitudes from NAOMI and SABER 9.6 μm observations during autumn twilight (within 15 September–15 November, 75° ≤ SZA at altitude 90 km ≤ 110°) in 2017 and 2018. ± figures after the VMR values are uncertainties.~~The figures in parentheses after the VMR values are uncertainties.~~



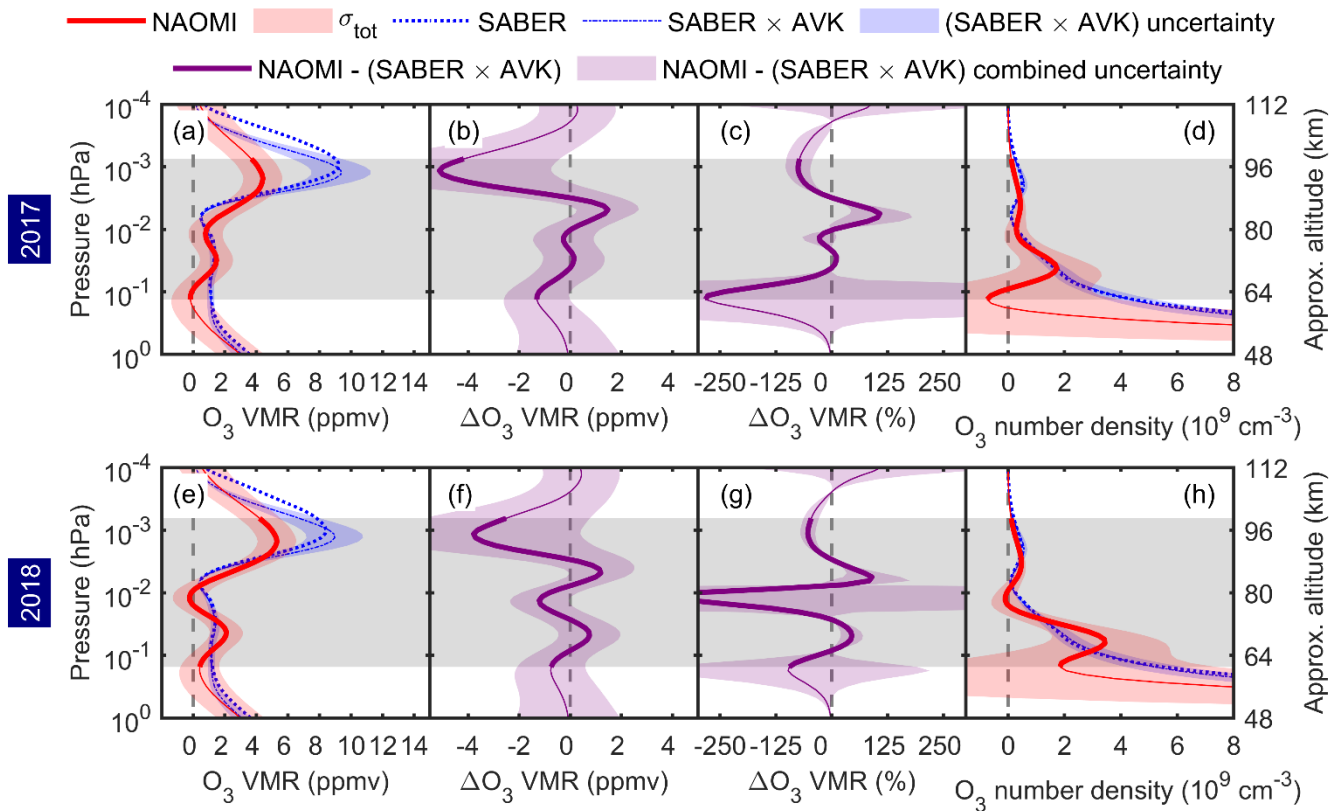
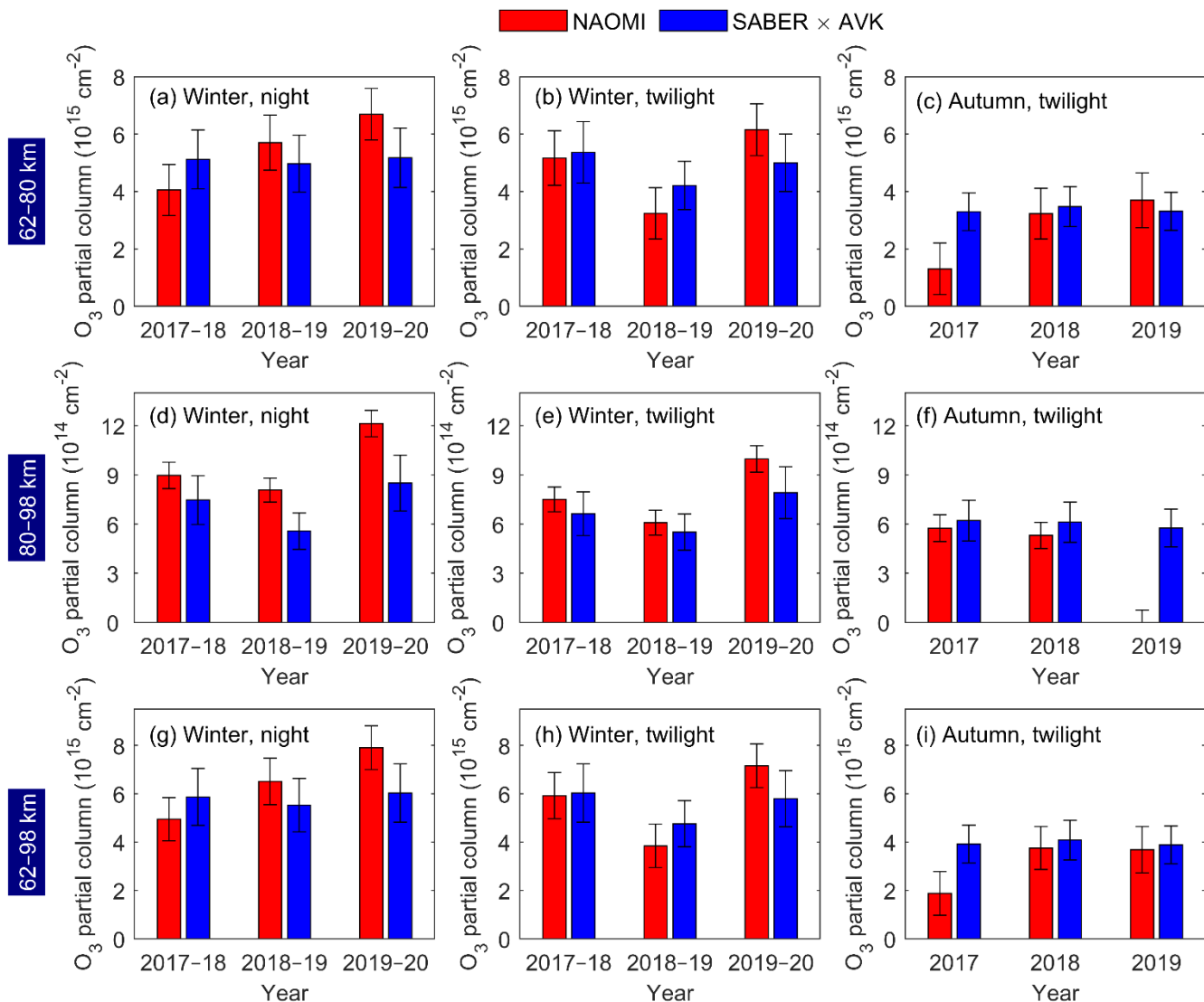


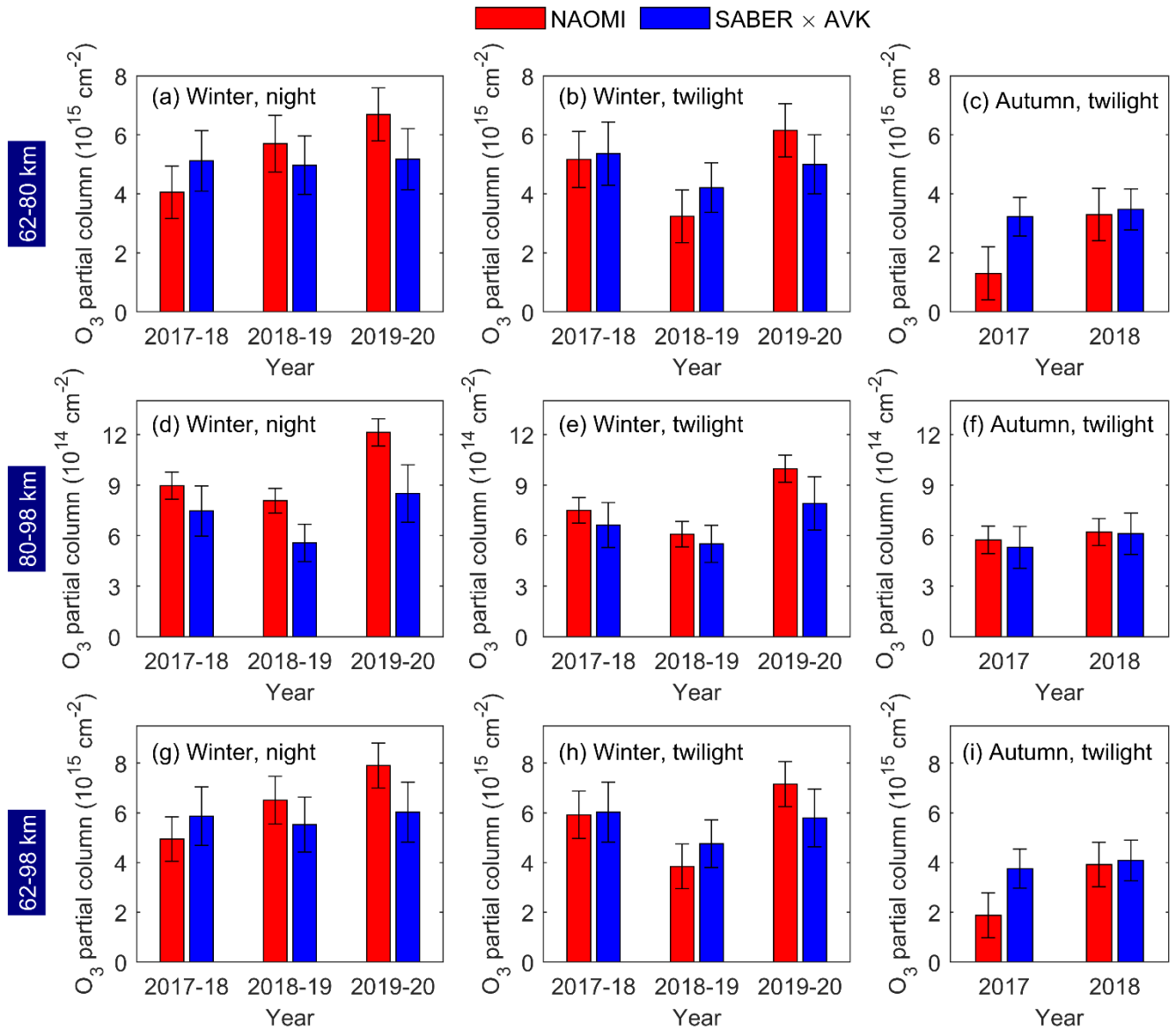
Figure 8: Mean ozone vertical profiles from NAOMI and SABER 9.6 μm observations during autumn twilight (within 15 September–15 November, $75^\circ \leq \text{SZA}$ at altitude $90 \text{ km} \leq 110^\circ$) conditions in 2017 (a–d), 2018 (e–h), and 2019 (i–l). The second and third columns give the absolute and relative (%) differences (NAOMI minus SABER 9.6 μm). The red, blue, and purple shading are the estimated uncertainties of the plotted parameters. The grey shaded regions and thicker sections of the plotted curves indicate the pressure and altitude ranges where $\text{MR} \geq 0.8$.

Figure 8: Mean ozone vertical profiles from NAOMI and SABER 9.6 μm observations during autumn twilight (15 September–15 November, $75^\circ \leq \text{SZA}$ at altitude $90 \text{ km} \leq 110^\circ$) in 2017 (a–d) and 2018 (e–h). The second and third columns give the absolute and relative (%) differences (NAOMI minus SABER 9.6 μm). The red, blue, and purple shading are the estimated uncertainties of the plotted parameters. The grey shaded regions and thicker sections of the plotted curves indicate the pressure and altitude ranges where $\text{MR} \geq 0.8$.

The NAOMI and SABER O_3 partial columns are shown in **Figure 9** for winter night and autumn night and twilight conditions in the different years. The columns over 62–80 km (**Figures 9a–c**) are up to an order of magnitude higher than over 80–98 km (**Figures 9d–f**) and are generally higher in the winter night and twilight cases (**Figures 9a–b, 9d–e, 9g–h**) than in autumn twilight (**Figures 9c, f, i**) where lower SZA conditions and correspondingly higher solar irradiance decrease middle atmospheric O_3 abundance. Observations by the two instruments show a similar pattern of variability from year to year, with the highest O_3 columns in the 2019–20 winter. The columns measured by the two instruments agree to within the measurement uncertainties shown by the vertical error bars, apart from the 2018–19 and 2019–20 winter nights at 80–98 km and for the 2017 autumn twilight at 62–80 km. Over the full retrieved altitude range (62–98 km), the NAOMI column for the 2017 autumn

twilight is 51% smaller than the corresponding SABER measurement. The largest contribution to the difference is at 62–
390 80 km (**Figure 9c**), whereas the smaller columns over 80–98 km (**Figure 9f**) are in good agreement as are the 2018 data
(**Figure 9c, 9f, and 9i**). The large discrepancy between the autumn 2017 NAOMI and SABER observations could be due to
a significant spectrum baseline ripple during the initial months of NAOMI operation. This possible cause is also indicated by
the larger deviation of NAOMI O₃ number density, which is integrated to produce partial columns, from the smoothed SABER
profile for 2017 (**Figure 8d**) compared to 2018 (**Figure 8h**). As indicated by the retrieval Jacobians (**Figure 4**),
395 smoothly-varying offsets and distortions over the 0.625 MHz NAOMI spectral bandwidth will affect O₃ retrieval for the lower
mesosphere whereas the narrow band gaussian signal corresponding to O₃ emission above ~80 km will be less affected.





400 **Figure 9:** Mean ozone partial columns at 62–80 km (a–c), 80–98 km (d–f), and 62–98 km (g–i) from NAOMI and SABER 9.6 μm observations during night-time winter (left column), winter twilight (centre column), and autumn twilight (right column) conditions in 2017–20. The error bars are the estimated uncertainties of the plotted parameters. Note that the partial column scales for the upper (a–c), middle (d–f), and lower (g–i) panel plots differ.

405 3.3 SABER 9.6 μm and 1.27 μm ozone profiles

The overlapping O₃ profile data from SABER 9.6 μm and 1.27 μm observations during daytime in summer and twilight in summer and autumn are compared in **Figure 10** and **Table 4**. The secondary O₃ maximum from both SABER channels show a similar pattern, with larger peak VMR for all three cases in 2019 compared to the two previous years. However, SABER 9.6 μm O₃ VMR consistently exceeds SABER 1.27 μm over 65–95 km with the largest difference (up to 58%) during autumn twilight. On the other hand, SABER 9.6 μm O₃ VMR over 48–65 km is consistently lower than SABER 1.27 μm in summer and autumn twilight and by as much as 50% lower at ~56 km in autumn twilight. The altitude of the secondary O₃ maximum in O₃ mixing ratio is 90–92 km during day and 95km at night. The secondary maximum in VMR in the SABER 9.6 μm measurements is at 96–97 km, ~1–2 km lower than the corresponding SABER 1.27 μm data.

415

		SABER 9.6 μm		SABER 1.27 μm	
	Year(s)	O ₃ VMR (ppmv)	Altitude (km)	O ₃ VMR (ppmv)	Altitude (km)
Summer, day	2017	0.95 \pm 0.19	97	0.85 \pm 0.17	98
	2018	1.07 \pm 0.21	97	0.99 \pm 0.20	99
	2019	1.18 \pm 0.24	96	1.10 \pm 0.22	98
Summer, twilight	2017	0.71 \pm 0.14	97	0.67 \pm 0.13	98
	2018	0.73 \pm 0.15	97	0.64 \pm 0.13	98
	2019	0.88 \pm 0.18	96	0.79 \pm 0.16	97
Autumn, twilight	2017	1.05 \pm 0.21	96	0.87 \pm 0.17	97
	2018	1.08 \pm 0.22	96	0.90 \pm 0.18	97
	2019	1.11 \pm 0.22	96	1.00 \pm 0.20	98

Table 4: Secondary ozone peak VMR and altitudes from SABER 9.6 μm and 1.27 μm observations during summer daytime (15 April–15 July, SZA at altitude 90 km < 75°), summer twilight (15 April–15 July, 75° ≤ SZA at altitude 90 km ≤ 110°), and autumn twilight (15 September–15 November, 75° ≤ SZA at altitude 90 km ≤ 110°). \pm figures after the VMR values are uncertainties.

420

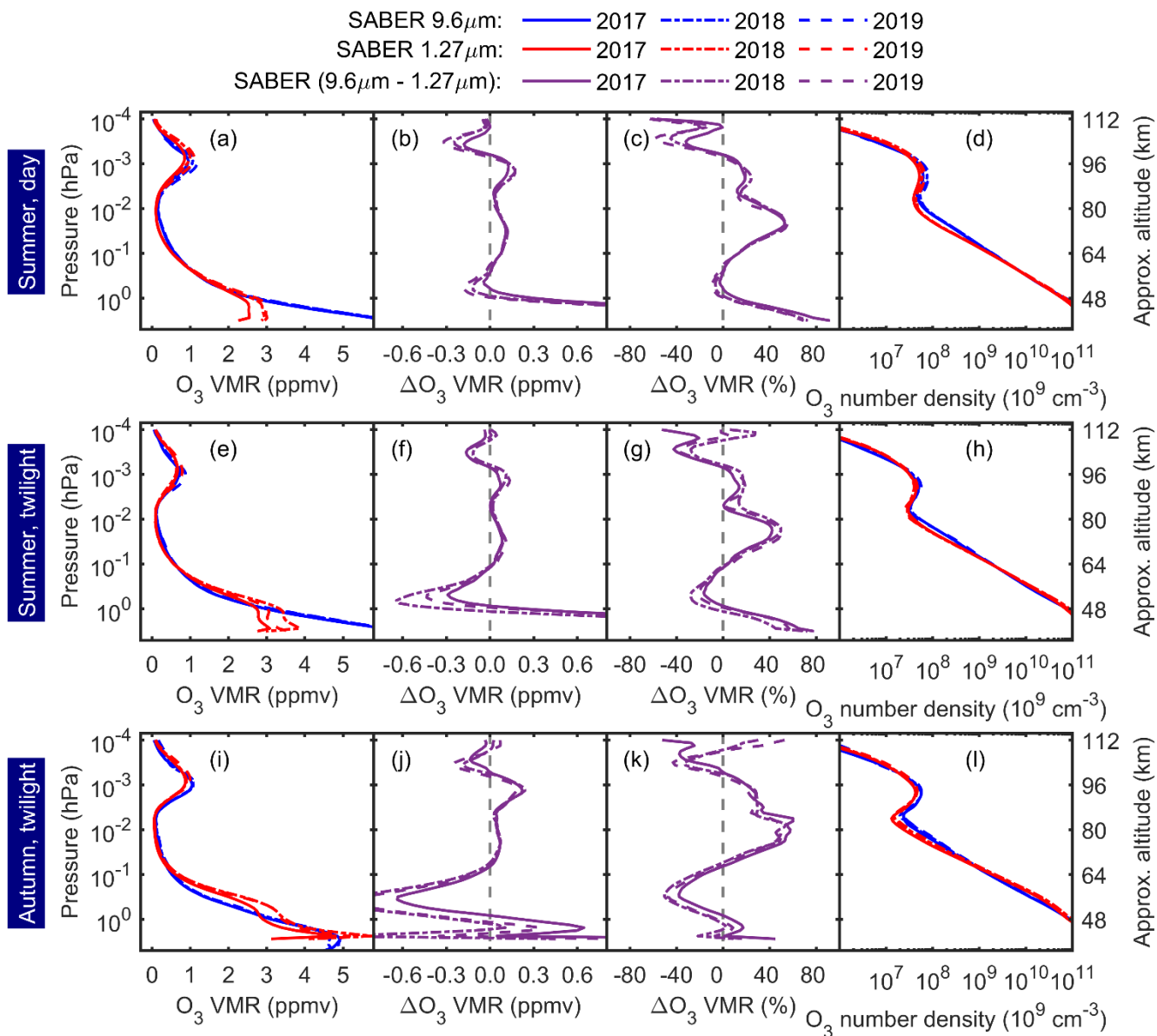


Figure 10: Mean ozone vertical profiles from SABER 9.6 μm and 1.27 μm observations during (a–d) summer daytime (within 15 April–15 July, SZA at altitude 90 km < 75°), (e–h) summer twilight (within 15 April–15 July, 75° ≤ SZA at altitude 90 km ≤ 110°), and (i–l) autumn twilight (within 15 September–15 November, 75° ≤ SZA at altitude 90 km ≤ 110°). The second and third columns give the absolute and relative (%) differences (SABER 9.6 μm minus SABER 1.27 μm).

4 Conclusions

430 Seasonal O₃ vertical profiles in the Arctic polar MLT region (altitude range 62–98 km) have been retrieved from ground-based Ku-band microwave (NAOMI) atmospheric observations from Ny-Ålesund during 2017–20. The NAOMI observations show broadly the same year-to-year and seasonal O₃ variabilities as overlapping satellite data (version 2.0) from the SABER 9.6 µm channel during night-time and twilight conditions. The winter night-time and twilight NAOMI and SABER 9.6 µm O₃ VMR profiles agree but differences in the secondary O₃ region at 88–97 km during autumn twilight exceed the measurement
435 uncertainties. The SABER secondary maximum VMR values are higher by 47% and 59% respectively compared to NAOMI for the two years, 2017 and 2018, where autumn twilight measurements were made. Considering the two SABER infrared channels which measure O₃ at different wavelengths and use different processing schemes, the autumn twilight SABER 9.6 µm O₃ VMRs for the three years 2017–19 are higher than the corresponding overlapping 1.27 µm measurements, with the largest difference of 58% over the altitude range 65–95 km similar to that between SABER 9.6 µm O₃ and the NAOMI observation.
440 The SABER 9.6 µm O₃ summer daytime mesospheric O₃ VMR is also consistently higher than the 1.27 µm measurement. Our intercomparison between ground-based microwave observations and the two SABER O₃ channels builds on a previous study (Smith et al., 2013) where SABER 9.6 µm mesospheric O₃ showed good relative agreement with other satellite measurements (<10% difference) but daytime O₃ over the altitude range 60–80 km was biased 20–50% higher. Our new analysis of ground-based (NAOMI) observations and SABER datasets confirm the previously reported level of agreement between
445 night-time SABER 9.6 µm mesospheric O₃ and other satellite datasets but show that under twilight conditions the 9.6 µm observations of secondary O₃ peak VMR are ~50% higher than both the SABER 1.27 µm and NAOMI measurements.

Possible reasons for the differences between mesospheric O₃ measured by the SABER 9.6 mm channel and other satellite datasets have been discussed by Smith et al. (2013). Here, we consider these reasons and other potential causes for observational differences in the context of our NAOMI ground-based measurements and comparisons between the SABER
450 9.6 µm and 1.27 µm data products. The differences between observations can be categorised as those that occur due to systematic and random differences in coincident retrieved profiles and those caused by the different sampling by each instrument.

Our work uses the latest publicly available SABER v2.0 data products whereas Smith et al. (2013) used the earlier v1.07 dataset. The v2.0 processing includes improved Level 1 radiance profile calibration and improvements to the Level 2
455 procedures used to retrieve mesospheric temperatures in non-local thermodynamic equilibrium conditions as well as updated atomic oxygen, atomic hydrogen, and chemical heating algorithms. More information on the SABER data processing and retrieval schemes can be found on the instrument website: <http://saber.gats-inc.com>. The changes in the SABER v2.0 datasets should have improved the O₃, water vapour, and temperature profiles used in our analysis. However, we observe similar differences in O₃ above ~60 km as the earlier study (Smith et al., 2013) using v1.07 data, suggesting that significant
460 uncertainties remain in SABER mesospheric O₃.

The SABER O₃ processing schemes are complex and, despite recent improvements, the retrievals are highly dependent on knowledge of numerous photochemical and quenching rates. For the 9.6 µm O₃ emission scheme, the SABER model includes spontaneous emission by over 340 radiative transitions, chemical pumping, collisional excitation, and quenching processes. The 1.27 µm measurement is known to be prone to errors when O₃ concentration is changing rapidly, including during sunrise and sunset (Zhu et al., 2007). O₃ abundances in the upper mesosphere are also sensitive to temperature and atomic oxygen transport, which can vary rapidly and locally due to sunlight and tidal effects and may amplify sampling differences between different observations. Smith et al. (2013) show that sampling differences between instruments can lead to substantially different vertical profile structures and seasonal variations even when coincident comparisons indicate good agreement. In our work, we have matched up co-located NAOMI and SABER observations in terms of overlapping geographic location, SZA, and local observation time. However, sampling differences between the ground-based and satellite instruments inevitably remain and contribute to the observed O₃ differences. Continuous atmospheric measurements from ground-based instruments such as NAOMI offer a complementary approach to satellite data analysis. Further work is needed to investigate and minimise instrument sampling differences, in particular local time and location effects that may be sensitive to the diurnal cycle in SZA. Studies focusing on O₃ profiles during twilight and summer daytime conditions, when observations show large differences, are needed to address current uncertainties in mesospheric O₃.

Data availability. The processed NAOMI and SABER datasets (Newnham et al., 2021, 2022) used in this study are available from the UK Polar Data Centre (<https://www.bas.ac.uk/data/uk-pdc/>). SABER data used in this study can be downloaded from ftp://saber.gats-inc.com/Version2_0/Level2A/. The presented data can be downloaded from <https://doi.org/10.5285/19845e8e-d6ef-4f95-8961-4da60f8294d3> (last access: xx-2 February 2022, xxx-xxxx). ~~[Authors' note: Datasets are available for the reviewers. Following review, the data DOI will be issued and included in the final version of the manuscript together with the last access date].~~

Author contribution. DAN performed the SABER and NAOMI data processing, O₃ retrieval calculations, and co-ordinated the study. PTV provided atmospheric model data (WACCM-D) for the retrievals. WDJC and MAC assembled and tested the 11.072 GHz O₃ spectrometer (NAOMI), deployed the instrument at Ny-Ålesund, and provided technical details. MK is a principal investigator for the Ny-Ålesund MOSAIC project and carried out instrument tests. AEER provided MOSAIC data acquisition code and instrument development support.

Competing interests. The authors declare that they have no conflict of interest.

Acknowledgements. This work has been supported in part by the UK's Natural Environment Research Council (NERC) Technologies Proof-of-Concept grant reference NE/P003478/1 "Satellite TV-based Ozone and OH Observations using Radiometric Measurements (STO₃RM)" awarded to DAN. NAOMI testing and deployment was supported by the Royal

495 Society Newton Fund reference NI150103 “The Effect of High-Energy Particle Precipitation from Space on the Earth’s Atmosphere” awarded to MK and MAC. PTV was supported by Academy of Finland project number 335555 “ICT-Solutions to Understand Variability of Arctic Climate (ICT-SUNVAC)”. The authors thank the ARTS and Qpack development teams and P. Kirsch at BAS for assistance configuring and running the code. The SABER and GATS teams are acknowledged for making the satellite datasets available and the NASA Global Modeling and Assimilation Office for MERRA-2.

500 References

- Andersson, M., Verronen, P., Rodger, C., Clilverd, M. A., and Seppälä, A.: Missing driver in the Sun–Earth connection from energetic electron precipitation impacts mesospheric ozone, *Nat. Commun.*, 5, 5197, <https://doi.org/10.1038/ncomms6197>, 2014.
- Baker, D. N., Erickson, P. J., Fennell, J. F., Foster, J. C., Jaynes, A. N., and Verronen, P. T.: Space Weather Effects in the Earth’s Radiation Belts, *Space Sci. Rev.*, 214, 17, <https://doi.org/10.1007/s11214-017-0452-7>, 2018.
- 505 Brasseur, G. P. and Solomon, S.: *Aeronomy of the Middle Atmosphere*, 3rd ed., Springer, Dordrecht, Netherlands, 2005.
- Buehler, S. A., Eriksson, P., Kuhn, T., von Engel, A., and Verdes, C.: ARTS, the atmospheric radiative transfer simulator, *J. Quant. Spectrosc. Radiat. Transfer*, 91(1), 65–93, <https://doi.org/10.1016/j.jqsrt.2004.05.051>, 2005.
- Buehler, S. A., Mendrok, J., Eriksson, P., Perrin, A., Larsson, R., and Lemke, O.: ARTS, the Atmospheric Radiative Transfer Simulator – version 2.2, the planetary toolbox edition, *Geosci. Model Dev.*, 11, 1537–1556, <https://doi.org/10.5194/gmd-11-1537-2018>, 2018.
- 510 [Clough, S., Shephard, M., Mlawer, E., Delamere, J., Iacono, M., Cady-Pereira, K., Boukabara, S., and Brown, P.: Atmospheric radiative transfer modeling: a summary of the AER codes, *J. Quant. Spectrosc. Ra.*, 91, 233–244, 2005.](#)
- Daae, M., Espy, P., Nesse Tyssøy, H., Newnham, D., Stadsnes, J., and Søråas, F.: The effect of energetic electron precipitation on middle mesospheric night-time ozone during and after a moderate geomagnetic storm, *Geophys. Res. Lett.*, 39, L21811, <https://doi.org/10.1029/2012GL053787>, 2012.
- 515 Eriksson, P., Jiménez, C., and Buehler, S. A.: Qpack, a general tool for instrument simulation and retrieval work, *J. Quant. Spectrosc. Radiat. Transfer*, 91(1), 47–64, <https://doi.org/10.1016/j.jqsrt.2004.05.050>, 2005.
- Eriksson, P., Buehler, S. A., Davis, C. P., Emde, C., and Lemke, O.: ARTS, the atmospheric radiative transfer simulator, version 2, *J. Quant. Spectrosc. Radiat. Transfer*, 112(10), 1551–1558, <https://doi.org/10.1016/j.jqsrt.2011.03.001>, 2011.
- 520 [Gordon, I. E., Rothman, L. S., Hill, C., Kochanov, R. V., Tan, Y., Bernath, P. F., Birk, M., Boudon, V., Campargue, A., Chance, K. V., Drouin, B. J., Flaud, J.-M., Gamache, R. R., Hodges, J. T., Jacquemart, D., Perevalov, V. I., Perrin, A., Shine, K. P., Smith, M.-A. H., Tennyson, J., Toon, G. C., Tran, H., Tyuterev, V. G., Barbe, A., Császár, A. G., Devi, V. M., Furtenbacher, T., Harrison, J. J., Hartmann, J.-M., Jolly, A., Johnson, T. J., Karman, T., Kleiner, I., Kyuberis, A. A., Loos, J., Lyulin, O. M., Massie, S. T., Mikhailenko, S. N., Moazzen-Ahmadi, N., Müller, H. S. P., Naumenko, O. V., Nikitin, A. V., Polyansky, O. L., Rey, M., Rotger, M., Sharpe, S. W., Sung, K., Starikova, E., Tashkun, S. A., Vander](#)
- 525

Auwera, J., Wagner, G., Wilzewski, J., Wcislo, P., Yu, S., and Zak, E. J.: The HITRAN2016 molecular spectroscopic database, *J. Quant. Spectrosc. Ra.*, 203, 3–69, <https://doi.org/10.1016/j.jqsrt.2017.06.038>, 2017.

530 Hartogh, P., Jarchow, C., Sonnemann, G. R., and Grygalashvly, M.: On the spatiotemporal behavior of ozone within the upper mesosphere/mesopause region under nearly polar night conditions, *J. Geophys. Res.*, 109, D18303, <https://doi.org/10.1029/2004JD004576>, 2004.

Hays, P. B. and Roble, R. G.: Observation of mesospheric ozone at low latitudes, *Planet. Space Sci.*, 21(2), 273–279, [https://doi.org/10.1016/0032-0633\(73\)90011-1](https://doi.org/10.1016/0032-0633(73)90011-1), 1973.

535 Kulikov, M. Y., Nechaev, A. A., Belikovich, M. V., Vorobeva, E. V., Grygalashvly, M., Sonnemann, G. R., and Feigin, A. M.: Boundary of nighttime ozone chemical equilibrium in the mesopause region from SABER data: Implications for derivation of atomic oxygen and atomic hydrogen, *Geophys. Res. Lett.*, 46, 997–1004, <https://doi.org/10.1029/2018GL080364>, 2019.

Kuntz, M.: A new implementation of the Humlicek algorithm for the calculation of the Voigt profile function, *J. Quant. Spectrosc. Ra.*, 57, 819–824, 1997.

540 Li, A., Roth, C. Z., Pérot, K., Christensen, O. M., Bourassa, A., Degenstein, D. A., and Murtagh, D. P.: Retrieval of daytime mesospheric ozone using OSIRIS observations of O_2 ($a^1\Delta_g$) emission, *Atmos. Meas. Tech.*, 13, 6215–6236, <https://doi.org/10.5194/amt-13-6215-2020>, 2020.

Limpasuvan, V., Orsolini, Y. J., Chandran, A., Garcia, R. R., and Smith, A. K.: On the composite response of the MLT to major sudden stratospheric warming events with elevated stratopause, *J. Geophys. Res. Atmos.*, 121, <https://doi.org/10.1002/2015JD024401>, 2016.

López-Puertas, M., García-Comas, M., Funke, B., Gardini, A., Stiller, G. P., von Clarmann, T., Glatthor, N., Laeng, A., Kaufmann, M., Sofieva, V. F., Froidevaux, L., Walker, K. A., and Shiotani, M.: MIPAS observations of ozone in the middle atmosphere, *Atmos. Meas. Tech.*, 11, 2187–2212, <https://doi.org/10.5194/amt-11-2187-2018>, 2018.

550 Marsh, D. R., Smith, A., Brasseur, G., Kaufmann, M., and Grossmann, K.: The existence of a tertiary ozone maximum in the high latitude middle mesosphere, *Geophys. Res. Lett.*, 28, 4531–4534, <https://doi.org/10.1029/2001GL013791>, 2001.

Marsh, D. R., Mills, M. J., Kinnison, D. E., and Lamarque, J.-F.: Climate change from 1850 to 2005 simulated in CESM1 (WACCM), *J. Climate*, 26, 7372–7391, <https://doi.org/10.1175/JCLI-D-12-00558.1>, 2013. Mlynczak, M. G., et al.: Atomic oxygen in the mesosphere and lower thermosphere derived from SABER: Algorithm theoretical basis and measurement uncertainty, *J. Geophys. Res. Atmos.*, 118, 5724–5735, <https://doi.org/10.1002/jgrd.50401>, 2013.

555 Mlawer, E. J., Payne, V. H., Moncet, J.-L., Delamere, J. S., Alvarado, M. J., and Tobin, D. C.: Development and recent evaluation of the MT-CKD model of continuum absorption, *Philos. T. R. Soc. A*, 370, 2520–2556, 2012.

Mlynczak, M. G., Hunt, L. A., Russell, J. M., and Marshall, B. T.: Updated SABER night atomic oxygen and implications for SABER ozone and atomic hydrogen, *Geophys. Res. Letters*, 45, 5735–5741, <https://doi.org/10.1029/2018GL077377>, 2018.

- Newnham, D. A., Clilverd, M. A., Kosch, M., Seppälä, A., and Verronen, P. T.: Simulation study for ground-based Ku-band microwave observations of ozone and hydroxyl in the polar middle atmosphere, *Atmos. Meas. Tech.*, 12, 2, 1375–1392, <https://doi.org/10.5194/amt-12-1375-2019>, 2019.
- ~~Newnham, D. A., Clilverd, M. A., Clark, W. D. J., Kosch, M., Verronen, P. T., and Rogers, A. E. E.: Processed ozone (O_3) vertical profiles from NAOMI and SABER observations during 2017–2020, Polar Data Centre, Natural Environment Research Council, UK, <https://doi.org/10.xxxx/xxxx>, 2021. [Authors' note: Datasets are available for the reviewers. Following review, the data DOI will be issued and included in the final version of the manuscript].~~
- Newnham, D. A., Clilverd, M. A., Clark, W. D. J., Kosch, M., Verronen, P. T., and Rogers, A. E. E.: Atmospheric observational datasets: Ozone vertical profiles in the polar middle atmosphere north of Ny Ålesund, Spitsbergen (Version 1.0) [Data set]. NERC EDS UK Polar Data Centre. <https://doi.org/10.5285/19845e8e-d6ef-4f95-8961-4da60f8294d3>, 2022.
- Palmroth, M., Grandin, M., Sarris, T., Doornbos, E., Tourgaidis, S., Aikio, A., Buchert, S., Clilverd, M. A., Dandouras, I., Heelis, R., Hoffmann, A., Ivchenko, N., Kervalishvili, G., Knudsen, D. J., Kotova, A., Liu, H.-L., Malaspina, D. M., March, G., Marchaudon, A., Marghitu, O., Matsuo, T., Miloch, W. J., Moretto-Jørgensen, T., Mpaloukidis, D., Olsen, N., Papadakis, K., Pfaff, R., Pirnaris, P., Siemes, C., Stolle, C., Suni, J., van den IJssel, J., Verronen, P. T., Visser, P., and Yamauchi, M.: Lower-thermosphere–ionosphere (LTI) quantities: current status of measuring techniques and models, *Ann. Geophys.*, 39, 189–237, <https://doi.org/10.5194/angeo-39-189-2021>, 2021.
- Pancheva, D., Mukhtarov, P., and Smith, A. K.: Nonmigrating tidal variability in the SABER/TIMED mesospheric ozone, *Geophys. Res. Lett.*, 41, 4059–4067, <https://doi.org/10.1002/2014GL059844>, 2014.
- Rodgers, C. D.: Inverse methods for atmospheric sounding: Theory and Practice, vol. 2 of Series on Atmospheric, Ocean and Planetary Physics, World Scientific, <https://doi.org/10.1142/3171>, 2000.
- Rogers, A. E. E., Lekberg, M., and Pratap, P.: Seasonal and diurnal variations of ozone near the mesopause from observations of the 11.072-GHz line, *J. Atmos. Oceanic Technol.*, 26, 2192–2199, <https://doi.org/10.1175/2009JTECHA1291.1>, 2009.
- Rogers, A. E. E., Erickson, P., Fish, V. L., Kittredge, J., Danford, S., Marr, J. M., Arndt, M. B., Sarabia, J., Costa, D., and May, S. K.: Repeatability of the seasonal variations of ozone near the mesopause from observations of the 11.072-GHz line, *J. Atmos. Oceanic Technol.*, 29, 1492–1504, <https://doi.org/10.1175/JTECH-D-11-00193.1>, 2012.
- Ryan, N. J. and Walker, K. A.: The effect of spectroscopic parameter inaccuracies on ground-based millimeter wave remote sensing of the atmosphere, *J. Quant. Spectrosc. Radiat. Transfer*, 161, 50–59, <https://doi.org/10.1016/j.jqsrt.2015.03.012>, 2015.
- Ryan, N. J., Walker, K. A., Raffalski, U., Kivi, R., Gross, J., and Manney, G. L.: Ozone profiles above Kiruna from two ground-based radiometers, *Atmos. Meas. Tech.*, 9, 4503–4519, <https://doi.org/10.5194/amt-9-4503-2016>, 2016.
- Sinnhuber, M., Nieder, H., and Wieters, N.: Energetic Particle Precipitation and the Chemistry of the Mesosphere/Lower Thermosphere, *Surv. Geophys.*, 33, 1281–1334, <https://doi.org/10.1007/s10712-012-9201-3>, 2012.

- Siskind, D. E., Merkel, A. W., Marsh, D. R., Randall, C. E., Hervig, M. E., Mlynczak, M. G., and Russell, J. M.: Understanding the effects of polar mesospheric clouds on the environment of the upper mesosphere and lower thermosphere, *J. Geophys. Res. Atmos.*, 123, 11,705–11,719, <https://doi.org/10.1029/2018JD028830>, 2018.
- Smith, A. K., Harvey, V. L., Mlynczak, M. G., Funke, B., García-Comas, M., Hervig, M., Kaufmann, M., Kyrölä, E., López-Puertas, M., McDade, I., Randall, C. E., Russell III, J. M., Sheese, P. E., Shiotani, M., Skinner, W. R., Suzuki, M., and Walker, K. A.: Satellite observations of ozone in the upper mesosphere, *J. Geophys. Res. Atmos.*, 118, 5803–5821, <https://doi.org/10.1002/jgrd.50445>, 2013.
- Smith, A. K., M. López-Puertas, B. Funke, M. García-Comas, M. G. Mlynczak, and L. A. Holt: Nighttime ozone variability in the high latitude winter mesosphere, *J. Geophys. Res. Atmos.*, 119, 13,547–13,564, <https://doi.org/10.1002/2014JD021987>, 2015.
- Smith, A. K., Espy, P. J., López-Puertas, M., and Tweedy, O. V.: Spatial and temporal structure of the tertiary ozone maximum in the polar winter mesosphere. *J. Geophys. Res. Atmos.*, 123, 4373–4389, <https://doi.org/10.1029/2017JD028030>, 2018.
- Smith-Johnsen, C., Orsolini, Y., Stordal, F., Limpasuvan, V., and Pérot, K.: Nighttime mesospheric ozone enhancements during the 2002 southern hemispheric major stratospheric warming, *J. Atmos. Sol.-Terr. Phys.*, 168, 100–108, doi.org/10.1016/j.jastp.2017.12.018, 2018.
- Sofieva, V. F., Kyrölä, E., Verronen, P. T., Seppälä, A., Tamminen, J., Marsh, D. R., Smith, A. K., Bertaux, J.-L., Hauchecorne, A., Dalaudier, F., Fussen, D., Vanhellemont, F., Fanton d’Andon, O., Barrot, G., Guirlet, M., Fehr, T., and Saavedra, L.: Spatio-temporal observations of the tertiary ozone maximum, *Atmos. Chem. Phys.*, 9, 4439–4445, <https://doi.org/10.5194/acp-9-4439-2009>, 2009.
- Tenneti, S. N. and Rogers, A. E. E.: Development of an optimized antenna and other enhancements of a spectrometer for the study of ozone in the mesosphere, VSRT and MOSAIC Memo 063, available at: https://www.haystack.mit.edu/wp-content/uploads/2020/07/memo_VSRT_063.pdf (last access: 21 February 2019), 2009.
- Van Vleck, J. and Huber, D.: Absorption, emission, and linebreadths: A semi-historical perspective, *Rev. Mod. Phys.*, 49, 939, <https://doi.org/10.1103/RevModPhys.49.939>, 1977.
- Verronen, P. T., and R. Lehmann: Enhancement of odd nitrogen modifies mesospheric ozone chemistry during polar winter, *Geophys. Res. Lett.*, 42, <https://doi.org/10.1002/2015GL066703>, 2015.
- Verronen, P. T., Andersson, M. E., Marsh, D. R., Kovács, T., and Plane, J. M. C.: WACCM-D – Whole Atmosphere Community Climate Model with D-region ion chemistry, *J. Adv. Model. Earth Sy.*, 8, 954–975, <https://doi.org/10.1002/2015MS000592>, 2016.
- Zawedde, A. E., Nesse Tyssøy, H., Stadsnes, J., and Sandanger, M. I.: Are EEP events important for the tertiary ozone maximum?, *J. Geophys. Res. Space Phys.*, 124, 5976–5994, <https://doi.org/10.1029/2018JA026201>, 2019.
- Zhu, X., Yee, J.-H., and Talaat, E. R.: Effect of dynamical-photochemical coupling on oxygen airglow emission and implications for daytime ozone retrieved from 1.27 μm emission, *J. Geophys. Res.*, 112, D20304, <https://doi.org/10.1029/2007JD008447>, 2007.

