

Impact of particle size, refractive index, and shape on the determination of the particle scattering coefficient - an optical closure study evaluating different nephelometer angular truncation and illumination corrections

Marilena Teri^{1,2}, Thomas Müller³, Josef Gasteiger¹, Sara Valentini^{4,1}, Helmuth Horvath¹, Roberta Vecchi⁴, Paulus Bauer¹, Adrian Walser¹, and Bernadett Weinzierl¹

¹University of Vienna, Faculty of Physics, Aerosol Physics and Environmental Physics Group, Boltzmannngasse 5, 1090 Vienna, Austria

²University of Vienna, Vienna Doctoral School in Physics, Boltzmannngasse 5, 1090 Vienna, Austria

³Leibniz-Institute for Tropospheric Research, Tropospheric Aerosols, 04318 Leipzig, Germany

⁴Dipartimento di Fisica "A. Pontremoli", Università degli Studi di Milano & INFN-Milan, 20133 Milano, Italy

Correspondence: Bernadett Weinzierl (bernadett.weinzierl@univie.ac.at)

Abstract. Aerosol particles in the atmosphere interact with solar radiation through scattering and absorption. Accurate aerosol optical properties are needed to reduce the uncertainties of climate predictions. The aerosol optical properties can be obtained via optical modeling based on the measured particle size distribution. This approach requires knowledge or assumptions on the particle refractive index and shape. Meanwhile, integrating nephelometry provides information on the aerosol scattering properties directly. However, their measurements are affected by angular non-idealities, and their data need to be corrected for angular truncation and illumination to provide the particle scattering coefficient. We performed an extensive closure study, including a laboratory and a simulated experiment, aiming to compare different nephelometer angular truncation and illumination corrections (further referred to as "angular corrections"). We focused on coarse mode irregularly shaped aerosols, such as mineral dust, a worldwide abundant aerosol component. The angular correction of irregular particles is found to be only $\sim 2\%$ higher than the angular correction of volume equivalent spheres. If the angular correction is calculated with Mie theory, the particle size distribution is needed. Our calculations show that if the particle size distribution is retrieved from optical particle spectrometer measurements and the irregular shape effect is not considered, the angular correction can be overestimated by about 5% and up to 22%. For mineral dust, the traditional angular correction based on the wavelength dependency of the scattering coefficient seems more accurate. We propose a guideline to establish the most appropriate angular correction depending on the aerosol type and the investigated size range.

1 Introduction

The atmosphere contains aerosol particles that scatter or absorb the solar radiation (direct effect) and act as cloud condensation nuclei (indirect effect), influencing the Earth's energy budget and thus the climate system. The aerosol radiative forcing constitutes one of the largest uncertainties in climate predictions (IPCC, 2013). To reduce this uncertainty, climate models

20 require more accurate information on the optical properties of aerosol particles. In particular, the particle scattering coefficient, its angular, distribution and the particle absorption coefficient are crucial quantities for calculating the aerosol direct radiative forcing. The traditional method to obtain the aerosol optical properties is to calculate them via optical modeling based on the particle size distribution measured with particle spectrometers (e.g., Hermann et al., 2016; Vasilatou, 2021), but also, different measurement techniques exist to measure the aerosol optical properties directly. For example, integrating nephelometry, 25 firstly introduced by Beuttell and Brewer (1949), is extensively used in monitoring stations, field campaigns, and laboratory experiments (e.g., Pandolfi et al., 2018; Cappa et al., 2016; Di Biagio et al., 2019). An integrating nephelometer performs a geometrical integration of the light scattered by gas molecules and aerosol particles in an enclosed volume over almost the complete angular range (Heintzenberg and Charlson, 1996; Anderson et al., 1996; Horvath, 1973). Therefore, it is possible to obtain values close to the total scattering coefficient without assuming the particle refractive index and shape.

30 Different measurement techniques and models could be used to independently derive the same parameters of an aerosol. This practice, called "closure experiment," aims not only to characterize a specific parameter but also to minimize the measurement uncertainties (Weinzierl et al., 2017). In particular, the closure, between optical properties simulated from the measured size distribution and the optical properties measured directly, allows in principle constraining the refractive index of the investigated aerosol (e.g., Abo Riziq et al., 2007; Mack et al., 2010; Kassianov et al., 2014).

35 The largest uncertainty of nephelometer measurements is the impossibility of measuring the light scattered by particles and air in the whole angular range, the angular truncation error (Heintzenberg and Charlson, 1996; Anderson et al., 1996), combined with the angular non-idealities of the light source (Anderson et al., 1996; Müller et al., 2009). Therefore, data from integrating nephelometers must be corrected to obtain the particle scattering coefficient. Since larger particles scatter more into the forward direction than smaller particles, the angular truncation error depends on size; the aerosol type can also affect the 40 angular correction and its determination is not straightforward. This correction is commonly called "truncation correction" but the correct term is angular correction, since it takes into account both errors, the angular truncation and the non-idealities of the light source.

An empirical angular correction, exploiting the wavelength dependence of scattering, was developed by Anderson and Ogren (1998) for the nephelometer TSI model 3563. This angular correction was adapted for the Ecotech Aurora 3000 nephelometer 45 by Müller et al. (2011a). The correlation between the scattering wavelength dependence and angular correction is due to the dependency of both quantities on the particle size. However, Bond et al. (2009) and Massoli et al. (2009) pointed out that this angular correction might be erroneous in some cases since the wavelength and angular dependence of scattering can be different for absorbing particles. Even if the uncertainty of this angular correction is only about 5%, Bond et al. (2009) remarked that this uncertainty is almost as large as the angular truncation error itself in the sub- μm size range, where absorbing particles are 50 relevant.

Another method of calculating the angular correction uses Mie theory and the angular sensitivity function, which takes into account the geometrical limitations of the nephelometer (Heintzenberg et al., 2006). This method requires knowledge of the particle size distribution and the refractive index, in addition to the nephelometer measurements. However, Heintzenberg et al. (2006) found larger uncertainties ($\sim 20\%$) associated with super- μm particles. In addition, Schladitz et al. (2009, 2011)

55 showed that this approach also requires the knowledge of particle shape in the case of non-spherical particles, such as mineral
dust aerosol. Mineral dust, raised from desert areas by the wind and transported around the globe, is the most abundant aerosol
component in terms of dry mass (Chooari et al., 2014; Textor et al., 2006). A study based on the spheroids model (Quirantes
et al., 2008) indicated that the effect of non-sphericity on the angular correction might be small. Meanwhile, Sorribas et al.
2015 estimated an uncertainty of about 13% for the Anderson and Ogren (1998) angular correction in case of coarse mode
60 desert dust aerosol and recommended the re-evaluation of this angular correction for coarse mode aerosol.

This work aims to evaluate and compare different nephelometer angular truncation and illumination corrections with focus on
mineral dust aerosol. We used the Ecotech Aurora 4000 polar nephelometer, which measures the light scattering in 18 different
angular sectors in addition to the total scattering coefficient. Müller et al. (2012) measured the angular illumination function
of the Aurora 4000 polar nephelometer and provided its angular sensitivity function for all angular sectors. An alternative
65 angular correction, exploiting the information on scattering for different angular sectors of the Aurora 4000 nephelometer, was
developed by Müller et al. (2012). This angular correction, in addition to spherical particles, considers several particle shapes.

Very recently, when our data were already processed, a new angular correction was proposed by Qiu et al. (2021). The new
angular correction exploits the wavelength dependency of the scattering coefficient, the hemispheric back-scattering fraction
and new technologies such as the random forest machine learning. The random forest machine learning was trained based on a
70 data set representing regional anthropogenic aerosol in the North China Plain, including mainly sub- μm particles. The utilized
data set limits the use of the new angular correction to sub- μm spherical particles. Since our work mainly focused on coarse
mode irregularly shaped particles, we did not consider this angular correction in our comparison.

We conducted an extensive closure study, including a laboratory and a simulated experiment, focusing on coarse mode
irregularly shaped particles (mineral dust-like). Laboratory test aerosols were generated using Polystyrene latex (PSL) particles,
75 ammonium sulfate (AS), and soil dust samples. Their extinction, scattering, and absorption properties, as well as the particle
number concentration and size distribution, were measured by seven instruments in parallel. To better interpret the results of the
laboratory experiment, we performed a simulated closure experiment randomly selecting several size distributions, refractive
indices, and shapes (e.g., irregularly shaped dust-like particles (Gasteiger et al., 2011)). We estimated the uncertainties in the
angular correction of the Aurora 4000 polar nephelometer calculated using parallel particle size distribution measurements
80 from a TSI OPS 3330. The TSI OPS 3330 is an optical particle spectrometer, a class of instruments widely used to measure the
aerosol size distributions during aircraft field experiments (e.g, Weinzierl et al., 2017; Spanu et al., 2020; Brock et al., 2021).

In Sec.2, we describe the principle of operation of the Aurora 4000 polar nephelometer. In Sec.3, we review the methods
considered for calculating the angular correction and their main limitations. In Sec.4, we describe the laboratory closure
experiment and the most important results. In Sec.5, we describe the simulated closure experiment and its main outcomes. In
85 Sec.6, we discuss the results of both the laboratory and the simulated experiments and we compare them with the literature. In
Sec.7, we draw the main conclusions and we give recommendations for an appropriate angular correction.

2 Principle of operation of the Aurora 4000 polar nephelometer

The Aurora 4000 polar nephelometer is a 3-wavelength integrating nephelometer. Integrating nephelometers measure the light scattered by particles and air in a volume. The light detector is placed orthogonally to a nearly Lambertian light source¹ such that the angular illumination function is similar to a $\sin(\theta)$, where θ is the scattering angle (Müller et al. (2009)). Volume elements along the detector field of view contribute to the measured signal with light scattered at different θ . The measured signal is the integral over nearly all angles of the angular scattering function $\gamma(\Omega)$, the fraction of light scattered out of a parallel beam of light per unit length, and per unit solid angle Ω with respect to the direction of the incident beam. In other words, integrating nephelometers measure a signal proportional to the scattering coefficient σ_s , the fraction of light scattered out of a parallel beam of light per unit length. A full description of the measurement principle of an integrating nephelometer is available in the appendix of Anderson et al. (1996).

The Aurora 4000 polar nephelometer uses as a light source light-emitting diodes (LEDs) at three different wavelengths: blue ($\lambda_B = 450$ nm), green ($\lambda_G = 525$ nm), and red ($\lambda_R = 635$ nm), and it is marked as "polar" because it integrates $\gamma(\Omega)$ in several angular sectors. A shutter can block the angular illumination, such that the detector measures only the light scattered between the shutter position α and 180° . The shutter of the Aurora 4000 can consecutively assume up to 18 angular positions ($0^\circ, 10^\circ, 15^\circ, \dots, 90^\circ$). For a given shutter position α and wavelength λ , the signal measured by the Aurora 4000 can be written as

$$S_\lambda^\alpha \propto 2\pi \int_{\theta=0^\circ}^{\theta=180^\circ} \gamma_\lambda(\theta) Z_\lambda^{Aurora4000}(\alpha, \theta) d\theta \quad (1)$$

where $Z_\lambda^{Aurora4000}(\alpha, \theta)$ describes the angular sensitivity of the Aurora 4000 for shutter position α at scattering angle θ (see Eq.5 in Sec.3.1). The signal S_λ^α is proportional to the scattering coefficient $\sigma_{s,\lambda}^\alpha$ in the angular sector $\alpha - 180$. The two extreme positions $\alpha = 0^\circ$ and $\alpha = 90^\circ$ yield a signal proportional to the total scattering coefficient $\sigma_{s,\lambda}^{0^\circ}$ and hemispheric back-scattering coefficient $\sigma_{s,\lambda}^{90^\circ}$ respectively.

Calibration with particle-free gases of known Rayleigh scattering coefficient leads to the constant of calibration K_λ^α which relates the measured signal S_λ^α to the particle scattering coefficient $\sigma_{sp,\lambda}^\alpha$ in the angular sector $\alpha - 180$:

$$\sigma_{sp,\lambda}^\alpha = K_\lambda^\alpha S_\lambda^\alpha - \sigma_{sR,\lambda}^\alpha \quad (2)$$

where $\sigma_{sR,\lambda}^\alpha$ is the Rayleigh scattering coefficient of particle-free air in the angular sector $\alpha - 180$. It can be derived integrating in the angular sector $\alpha - 180$ the Rayleigh angular scattering function $\gamma_R(\theta) = \frac{\sigma_{sR,\lambda}^{0^\circ}}{4\pi} \frac{3}{4} (1 + \cos^2(\theta))$:

$$\sigma_{sR,\lambda}^\alpha = \sigma_{sR,\lambda}^{0^\circ} \left[\frac{1}{2} + \frac{1}{8} \cos^3(\alpha) + \frac{3}{8} \cos(\alpha) \right] \quad (3)$$

where $\sigma_{sR,\lambda}^{0^\circ}$ is the Rayleigh total scattering coefficient of air (e.g., Bucholtz, 1995) at the wavelength λ calculated at the temperature and pressure of the carrier gas. The second term is a value changing from 1 for $\alpha = 0^\circ$ to 0.5 for $\alpha = 90^\circ$.

¹A light source is Lambertian if the emitted radiance is proportional to $\cos(\phi)$, where ϕ is the angle between the direction of the emitted light and the surface normal to the light surface

3 Angular truncation and illumination correction

3.1 Angular sensitivity function

In an ideal nephelometer, the light source is perfectly Lambertian and the angular integration is complete from α to 180° . Thus, the angular sensitivity function can be written as:

$$120 \quad Z_{\lambda}^{ideal}(\alpha, \theta) = \begin{cases} 0 & 0^\circ < \theta < \alpha \\ \sin(\theta) & \alpha < \theta < 180^\circ \end{cases} \quad (4)$$

Any real nephelometer is affected by non-idealities that need to be considered in the angular sensitivity function. First, the angular truncation error: the light scattered into the extreme forward ($\theta = 0^\circ$) and backward ($\theta = 180^\circ$) directions cannot be measured and the detector field of view is restricted to angular detection limits (Anderson et al., 1996; Moosmüller and Arnott, 2003). Second, the light source is not perfectly Lambertian and the angular illumination function deviates a little from
125 a sine function (Anderson et al., 1996; Müller et al., 2009). Third, the separation by the shutter is not perfectly sharp and the shadowing of the shutter has to be considered when its position is different from zero (Müller et al., 2011a). The angular sensitivity function of the Aurora 4000 polar nephelometer can be written as (Müller et al., 2012):

$$Z^{Aurora4000}(\alpha, \theta) = \begin{cases} 0 & 0^\circ < \theta < \theta_1 \\ \max \left\{ 0, \beta_1 \sin(\theta)^{\beta_2} \min \left[1, \left(\frac{\theta - \delta_1(\alpha)}{\delta_2(\alpha)} \right) \right] \right\} & \theta_1 < \theta < \theta_2 \\ 0 & \theta_2 < \theta < 180^\circ \end{cases} \quad (5)$$

The angular limits of detection θ_1 and θ_2 are reported in the Aurora 4000 polar nephelometer user manual. β_1 and β_2
130 describe the deviation from the sine as measured by Müller et al. (2012) with the method described in Müller et al. (2009). $\delta_1(\alpha)$ and $\delta_2(\alpha)$ account for the shadowing of the shutter as function of its position α and are provided by Müller et al. (2012). The parameters for the Aurora 4000 polar nephelometer are reported in Table 1 and are the same for the three wavelengths.

Table 1. Parameters of the Aurora 4000 angular sensitivity function given by Müller et al. (2012)

	θ_1	θ_2	β_1	β_2	$\delta_1(\alpha)$	$\delta_2(\alpha)$
Aurora 4000	9	170	1.00	1.109	$0.4156 \cdot \alpha + 0.0041 \cdot \alpha^2$	$1.1935 \cdot \alpha + 0.0082 \cdot \alpha^2$

The ideal particle scattering coefficient $\sigma_{sp}^{ideal, \alpha}$ and the Aurora 4000 particle scattering coefficient $\sigma_{sp}^{Aurora4000, \alpha}$ can be
135 explicitly written as:

$$\sigma_{sp,\lambda}^{ideal,\alpha} = 2\pi \int_{\theta=\alpha}^{\theta=180^\circ} \gamma_{p,\lambda}(\theta) \sin(\theta) d\theta \quad (6)$$

$$\sigma_{sp,\lambda}^{Aurora4000,\alpha} = 2\pi C_{R,\alpha} \int_{\theta=0^\circ}^{\theta=180^\circ} \gamma_{p,\lambda}(\theta) Z^{Aurora4000}(\alpha, \theta) d\theta \quad (7)$$

where $C_{R,\alpha}$ takes into account the angular truncation and illumination correction implicitly performed through the particle-free gases calibration (Anderson and Ogren, 1998; Müller et al., 2011a). It can be calculated as:

$$140 \quad C_{R,\alpha} = \frac{\int_{\theta=\alpha}^{\theta=180^\circ} \gamma_R(\theta) \sin(\theta) d\theta}{\int_{\theta=0^\circ}^{\theta=180^\circ} \gamma_R(\theta) Z^{Aurora4000}(\alpha, \theta) d\theta} \quad (8)$$

For the Aurora 4000 polar nephelometer, the Rayleigh angular truncation and illumination correction for $\alpha = 0^\circ$ is a non-negligible value:

$$C_{R,0^\circ} = 1.059718 \quad (9)$$

145 Taking into account both the angular truncation and the non-Lambertian illumination, the angular correction C_α for any position of the shutter α can be defined, following the definition given by Anderson and Ogren (1998), as

$$C_\alpha = \frac{\sigma_{sp}^{ideal,\alpha}}{\sigma_{sp}^{Aurora4000,\alpha}} \quad (10)$$

In this work, we focus on the angular correction C_{0° , that is the angular correction to obtain the particle scattering coefficient $\sigma_{sp}^{0^\circ}$ from the particle scattering coefficient measured by the Aurora 4000 for shutter position $\alpha = 0^\circ$, $\sigma_{sp}^{Aurora4000,0^\circ}$. Since larger particles scatter into the forward direction more than smaller particles, C_{0° is size-dependent and increases with increasing particle size. This effect was originally reported by Heintzenberg and Quenzel (1973). Different methods have been proposed in literature to calculate the angular correction C_{0° . The angular correction can be calculated analytically using the definition (Eq.10), if the angular distribution of scattering by particles, i.e., the particle phase function, is known. To highlight the importance of the particle phase function to apply this method, we refer to this angular correction as C_{phase} . Other methods of calculating the angular correction exploit the relationship between C_{0° and quantities measured by the nephelometer.

155 We consider an angular correction based on the wavelength dependence of the particle scattering coefficient, the scattering Ångström exponent, C_{SAE} , and one based on the polar measurements of the particle scattering coefficient C_{polar} . In the following sections, we describe each method and its limitations by reviewing the related literature, as also summarized in Table 2. To the best of our knowledge, there is currently no literature comparing these corrections and describing which correction works best.

160

Table 2. Different angular corrections for the particle scattering coefficient and their limitations.

Correction	Formula	Literature	Reported limitations
C_{phase}	$\frac{\int_{0^{\circ}}^{180^{\circ}} P_p(\theta) \sin(\theta) d\theta}{\int_{0^{\circ}}^{180^{\circ}} P_p(\theta) Z^{Aurora4000}(0^{\circ}, \theta) d\theta} \frac{1}{C_{R,0^{\circ}}}$	Angular correction developed by Heintzenberg et al. (2006) . The particle phase function $P_p(\theta)$ can be obtained via Mie simulations, if the size distribution and refractive index are known. $Z^{Aurora3000}(0^{\circ}, \theta)$ was measured by Müller et al. (2011a) . $Z^{Aurora4000}(0^{\circ}, \theta)$ was measured by Müller et al. (2012)	Large uncertainties were found for super- μm particles (Heintzenberg et al., 2006). If the particle shape differs from spheres, this angular correction may be not applicable (Schladitz et al., 2009, 2011).
C_{SAE}	$a + b \cdot SAE$	Angular correction developed by Anderson and Ogren (1998) for the TSI nephelometer. The parameters for the Aurora 3000 are given by Müller et al. (2011a) . The parameters for the Aurora 4000 are given in Table 3.	Large uncertainties are expected for coarse mode aerosol Anderson and Ogren (1998) ; and Sorribas et al. (2015) recommend this correction to be re-evaluated for coarse mode aerosol. This correction can be erroneous for absorbing particles (Bond et al., 2009; Massoli et al., 2009).
C_{polar}	$\left(c + d \cdot \frac{\sigma_{sp}^{Aurora4000,10^{\circ}} - \sigma_{sp}^{Aurora4000,20^{\circ}}}{\sigma_{sp}^{Aurora4000,10^{\circ}}} \right)^{-1}$	Angular correction developed for the Aurora 4000 by Müller et al. (2012) .	This angular correction underestimates the true scattering coefficient for large particles (Müller et al., 2012).

3.2 Angular correction using the phase function: C_{phase}

The angular correction can be calculated on the basis of the definition Eq.(10), if the particle phase function $P_p(\theta)$ is available. Considering the definition of particle phase function ($P_p(\theta) = 4\pi\gamma_p(\theta)/\sigma_{sp}$) and writing explicitly the ideal and Aurora 4000 particle scattering coefficient (see Eq.(6) - (9)) with $\alpha = 0^\circ$, the angular correction can be written as

$$165 \quad C_{phase} = \frac{\int_{0^\circ}^{180^\circ} P_p(\theta) \sin(\theta) d\theta}{\int_{0^\circ}^{180^\circ} P_p(\theta) Z^{Aurora4000}(0^\circ, \theta) d\theta} \frac{1}{C_{R,0^\circ}} \quad (11)$$

where the second term takes into account the angular truncation and illumination error for Rayleigh scattering. Knowledge about the particle phase function is required to calculate the first term. The particle phase function for a given wavelength can be calculated via Mie theory if the size distribution and refractive indices of particles are known. This method was proposed, e.g., by Heintzenberg et al. (2006). However, Schladitz et al. (2009) found high discrepancies between Mie-calculated and
170 measured scattering coefficients for desert dust events and showed that the particle shape also needs to be considered in the case of non-spherical particles. As an alternative, the particle phase function can be measured directly using a non-integrating polar nephelometer, an instrument that uses a rotating arm to measure the angular scattering function with high angular resolution without performing the angular integration (e.g., Waldram, 1945; Horvath et al., 2018).

3.3 Angular correction using the scattering Ångström exponent: C_{SAE}

175 A method to calculate the angular correction C_{0° without additional measurements exploits the wavelength dependence of scattering expressed by the scattering Ångström exponent (SAE). If the particle scattering coefficient is measured at two wavelengths, λ_1 and λ_2 , the scattering Ångström exponent can be obtained as:

$$SAE(\lambda_1/\lambda_2) = -\frac{\log(\sigma_{sp,\lambda_1}/\sigma_{sp,\lambda_2})}{\log(\lambda_1/\lambda_2)} \quad (12)$$

Anderson and Ogren (1998) found a linear relationship between the SAE and C_{0° and proposed that the angular correction can
180 be constrained using the SAE. The angular correction C_{SAE} exploiting the SAE is given by:

$$C_{SAE} = a + b \cdot SAE^* \quad (13)$$

where SAE^* is the scattering Ångström exponent calculated using uncorrected nephelometer measurement of σ_{sp} . Wavelength pairs are λ_B and λ_G for the angular correction at the blue wavelength (λ_B), λ_B and λ_R for the angular correction at the green wavelength (λ_G), and λ_G and λ_R for the angular correction at the red wavelength (λ_R). The parameters a and b are derived from
185 Mie calculations of C_{0° for ranges of particle sizes and refractive indices. The parameters a and b for the TSI nephelometer model 3563 are given by Anderson and Ogren (1998) and for the Ecotech Aurora 3000 nephelometer by Müller et al. (2011a). To apply this method to the Ecotech Aurora 4000 polar nephelometer, we calculated the parameters for the angular correction C_{SAE} considering the angular sensitivity function measured by Müller et al. (2012). We used the same size distribution and refractive indices used by Anderson and Ogren (1998) and Müller et al. (2011a). The parameters are given in Table 3.

190 Calculations are limited to weakly absorbing particles with the imaginary part of the refractive index k in the range 0.00 – 0.01. The real part of the refractive index n is in the range 1.40 – 1.52. The size distributions are bimodal lognormal functions with geometric standard deviation 1.8 and geometric volume median diameter in the range 0.2 – 0.4 μm for the fine mode and 2.0 – 4.0 μm for the coarse mode. The fine mode volume fraction varies between 0.1 and 0.9. Calculations are done considering either the complete size distribution (no size cut-off) or a sub- μm size cut-off, with aerodynamic diameter smaller than 1 μm (0.77 μm for density $\rho = 1.7 \text{ g cm}^{-3}$). This size segregation was introduced by Anderson and Ogren (1998). They point out that the angular correction is better constrained by the SAE when only sub- μm particles are measured, while larger uncertainties $\sim 23\%$ are expected when coarse mode particles are also measured.

Further limitations of this method were found by Bond et al. (2009) theoretically and by Massoli et al. (2009) experimentally. They point out that the uncertainty of the angular correction C_{SAE} increases for absorbing particles. Indeed, the wavelength dependence of the particle scattering coefficient is related to particle size only indirectly.

Table 3. Angular corrections for Aurora 4000 for the total scattering coefficient C_{0° as function of the scattering Ångström exponent: $C_{0^\circ} = a + b \cdot SAE^*$. For correction of the scattering coefficients for the blue wavelength (λ_B), the scattering Ångström exponent calculated from uncorrected scattering coefficients of blue and green wavelengths (λ_B, λ_G) is used. At wavelength λ_G and λ_R , scattering Ångström exponents at the wavelength pairs (λ_B, λ_R) and (λ_G, λ_R) are used, respectively.

wavelength		$\lambda_B = 450 \text{ nm}$		$\lambda_G = 525 \text{ nm}$		$\lambda_R = 635 \text{ nm}$	
Ångström exponents		SAE*(λ_B, λ_G)		SAE*(λ_B, λ_R)		SAE*(λ_G, λ_R)	
parameters		a	b	a	b	a	b
Aurora 4000	no size cut-off	1.361	-0.159	1.352	-0.151	1.334	-0.135
	sub- μm size cut-off	1.137	-0.037	1.127	-0.036	1.105	-0.03

3.4 Angular correction using the polar measurements of the particle scattering coefficient: C_{polar}

A new angular correction based on the specific feature of the Aurora 4000 that integrates the angular scattering function $\gamma(\theta)$ at many different angular sectors ($\alpha - 170$) was developed by Müller et al. (2012).

In particular, the particle scattering coefficients $\sigma_{sp}^{Aurora4000,\alpha}$ for $\alpha = 10^\circ$ and $\alpha = 20^\circ$ are considered to obtain the polar factor $(\sigma_{sp}^{Aurora4000,10^\circ} - \sigma_{sp}^{Aurora4000,20^\circ}) / \sigma_{sp}^{Aurora4000,10^\circ}$. The angular correction C_{polar} is given by:

$$C_{polar} = \left(1.043 - 0.7651 \frac{\sigma_{sp}^{Aurora4000,10^\circ} - \sigma_{sp}^{Aurora4000,20^\circ}}{\sigma_{sp}^{Aurora4000,10^\circ}} \right)^{-1} \quad (14)$$

The parameters were derived from scattering theory using both Mie and Discrete Dipole Approximation codes. Calculations were done for different shapes: spheres, cubes and nested cubes, and three different kind of dust shapes. Size parameter ($= \pi d_p / \lambda$) ranges from 0.1 to 28. The imaginary part of the refractive index k is in the range 0.00 – 0.1. The real part of

210 refractive index n is in the range 1.53 – 1.55. Müller et al. (2012) showed via model simulations that the angular correction C_{polar} is more accurate than the angular correction C_{SAE} for volume median diameters below 1 μm and for a large range of refractive indices and particle shapes, and that both corrections underestimate the particle scattering coefficient for particles larger than 1 μm .

4 Laboratory closure experiment

215 4.1 Experimental methods

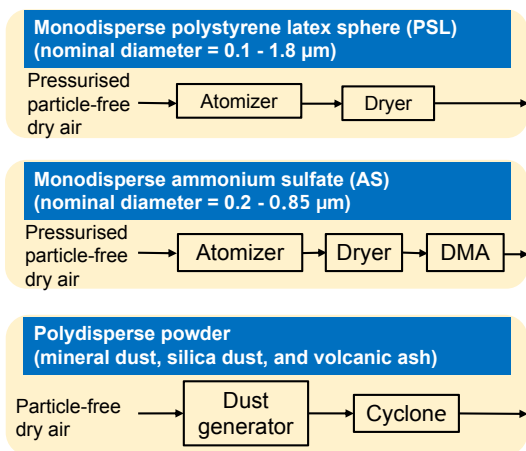
To test the different angular corrections for the Aurora 4000 polar nephelometer, we deploy several instruments to measure the optical and microphysical properties of laboratory-generated aerosol, both monodisperse and polydisperse. The experimental set-up is shown in Fig.1. The Aurora 4000 polar nephelometer and a self-built polar nephelometer, hereafter referred to as Horvath’s polar nephelometer (Horvath et al., 2018), were used to measure the particle scattering coefficients at $\lambda = 450, 525,$
220 and 635 nm and the particle phase function at $\lambda = 532$ nm, respectively. Besides the particle scattering properties, the particle extinction coefficient at 530 nm was measured by a cavity attenuated phase shift monitor PMext (CAPS PMext, Aerodyne), and the particle absorption coefficient at 467, 528, and 652 nm by a tricolor absorption photometer (TAP, Brechtel). The particle number concentration was measured by a condensation particle counter (CPC 3772, TSI), and the particle size distribution by two optical particle spectrometers (UHSAS, DMT) and (OPS 3330, TSI) covering the nominal size range 0.06 – 1 μm
225 and 0.3 – 10 μm , respectively. All instruments were connected to a stainless steel chamber where the aerosol flow was mixed and diluted with particle-free dry air. Nearly monodisperse aerosols were generated using polystyrene latex sphere (PSL) of nominal diameter in the range 0.1 – 1.8 μm or ammonium sulfate (AS) in combination with a Vienna type differential mobility analyzer (DMA)(Steiner et al., 2010), obtaining particle size distributions with diameter in the range 0.2 – 0.85 μm . Polydisperse aerosols were generated by blowing dry air through a hermetic glass bottle containing the sample powder. The bottle cap
230 had two holes for the air inlet and outlet. A metal tube was placed from the inlet almost to the bottle bottom so that the blown air flowed horizontally to the surface where the sample powder was deposited. An electrical vibrating device was mounted outside the bottle and could be activated to mobilize the powder better. The samples included synthetic non-absorbing silica dust and soil samples collected from desert areas such as sediments from a plain near Tagounite (Morocco), river sediments at Tagounite (Morocco), sand from the Sahara desert, dust from Mauritania, and soil dust from Zagora (Morocco). Moreover,
235 one sample of volcanic ash from Eyjafjalla (Island) was included.

Measurements were repeated twice, with and without a cyclone for size-selective sampling, in order to achieve different size distributions. Although the nominal aerodynamic size cut-off of the cyclone was ~ 1 μm , we could not attain the nominal airflow through the cyclone and the achieved dimensional cut-off was most probably larger than 1 μm . We measured volume median diameters in the range 0.85 – 1.85 μm for measurements with the cyclone and in the range 2.20 – 2.79 μm for
240 measurements without the cyclone.

Before each measurement, the dilution chamber was filled in with particle-free dry air to remove any residual particles. Stable concentrations were required for at least 35 min due to the temporal resolution of Horvath’s polar nephelometer. Moreover,

245 concentrations corresponding to a particle extinction coefficient between 100 Mm^{-1} and 200 Mm^{-1} were preferred, since they are the CAPS PM_{ext} best condition of operation. At the beginning of each measurement, the flow was set to satisfy these requirements. However, these conditions were challenging to obtain, in particular for the mineral dust measurements. If an adjustment was required during one measurement, a manual bottle shaking was preferred rather than a flow adjustment to avoid changes in the size cut-off.

Aerosol generation and size selection systems



Aerosol measurements

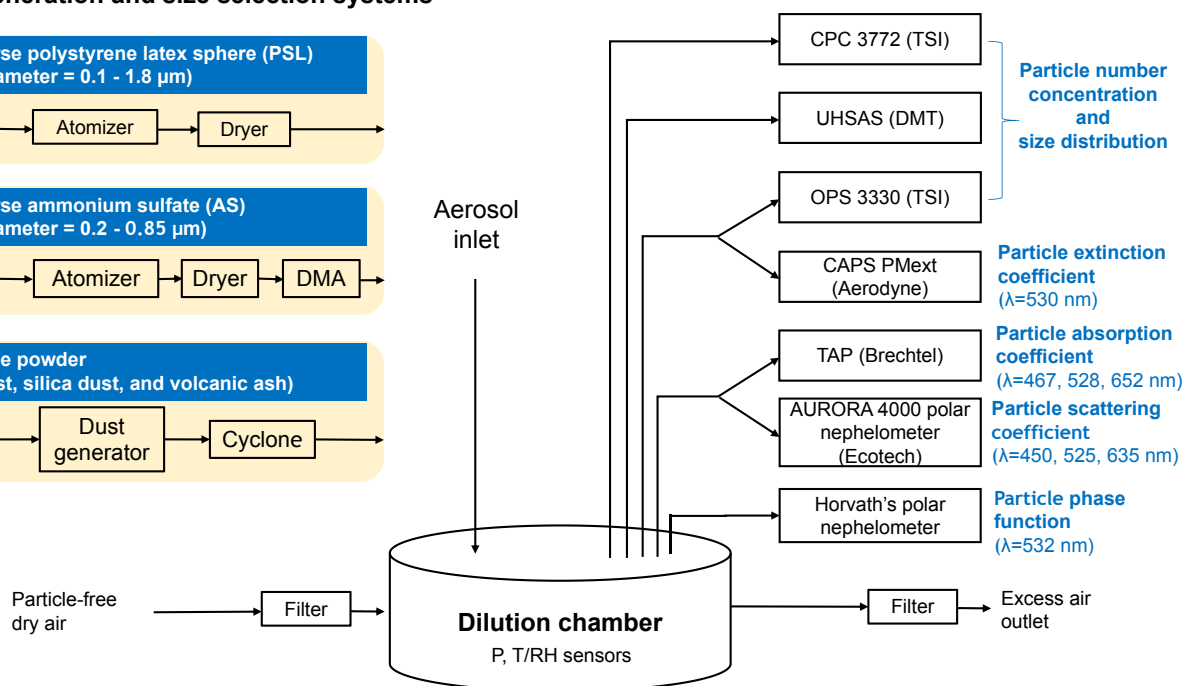


Figure 1. Scheme of the laboratory closure experiment set-up. Different aerosol types, such as monodisperse polystyrene latex spheres (PSL), ammonium sulfate (AS), and polydisperse powder (mineral dust, silica dust, and volcanic ash), were generated using three different aerosol generation and size selection systems (in the upper left). The aerosol generation and size selection systems were connected via the aerosol inlet to a dilution chamber, where the aerosol flow is mixed with particle-free dry air. Seven measurement instruments were connected to the dilution chamber to measure extinction, scattering, and absorption aerosol properties as well as particle number concentration and size distributions.

4.2 Data evaluation

The data evaluation of the laboratory experiment data had the overall aim of investigating the uncertainty of the particle scattering coefficient measurements by testing different angular corrections. A summary of data evaluation from the raw data is provided in Fig.2. The top line displays all instruments involved in the laboratory experiment. The descending arrows include all corrections performed to obtain the measured quantities of each instrument (indicated in yellow boxes). Black arrows indicate when data from an instrument are an input for the correction of a different instrument. The tested angular corrections are reported in red boxes. The angular corrections C_{SAE} , based on the scattering Ångström exponent, and C_{polar} , based on the polar measurements of the particle scattering coefficient, are obtained directly from the Aurora 4000 polar nephelometer measurements. The angular correction based on the phase function C_{phase} is calculated, on the one hand, considering the particle phase function measured by Horvath's polar nephelometer, from now on referred to as $C_{phase,H}$. On the other hand, this angular correction is calculated considering the particle phase function simulated using the size distribution measured by the two OPSs, from now on referred to as $C_{phase,OPS}$. The four angular corrections C_{SAE} , C_{polar} , $C_{phase,H}$, and $C_{phase,OPS}$ were tested comparing the corrected Aurora 4000 particle scattering coefficient with the difference of the particle extinction coefficient and the particle absorption coefficient. In addition, the particle size distributions measured by the two OPSs were used to simulate the Aurora 4000 scattering coefficients and to obtain the simulated angular corrections $C_{SAE,OPS}$ and $C_{polar,OPS}$. The six angular corrections were compared to each other.

The most important considerations of the data analysis of each instrument are summarized below. Further details of the data analysis are provided in the supplementary information. All data were converted to standard temperature and pressure (STP: $T_0 = 273.15$ K, $P_0 = 1013.25$ hPa). The Aurora 4000 polar nephelometer was calibrated with particle-free air and CO_2 , following the procedure recommended by Anderson and Ogren (1998). A set of calibrations were performed, and the combined uncertainty due to calibration and noise for 1-minute data was found to be about 8 %, while for the data averaged along with longer sequences, it is smaller than 3 %. The higher uncertainty for the 1-minute data was due to the temporal resolution of about 30 s obtained by measuring the scattering coefficient $\sigma_{sp,\lambda}^\alpha$ for all the 18 available positions of the scatter shutter.

The particle extinction coefficient σ_{ep} at $\lambda = 530$ nm was measured by the CAPS PM_{ext} . Due to the high reliability and low uncertainties ($\pm 3\%$ according to Petzold et al. (2013) and Onasch et al. (2015)) of the CAPS PM_{ext} , this instrument was considered to be the reference. It is not affected by angular truncation error, since it measures the phase shift of a square modulated signal after being reflected several times between two highly reflective mirrors placed at the extremes of the measurement chamber. The CAPS PM_{ext} was calibrated and corrected for non-linear behavior considering measurements of the Aurora 4000 particle scattering coefficient for $0.203 \mu m$ PSL particles. For this correction, the Aurora 4000 particle scattering coefficient was corrected for angular truncation and illumination correction. The angular correction was calculated with Mie simulations considering a log-normal size distribution ($d_g = 203$ nm, $\sigma_g = 1.026$, $m(\lambda = 525$ nm) = $1.582 + i0.00$ as reported in Devon and Rudin (1987)). Besides a larger uncertainty, this calibration may introduce some compensation for the inaccuracy

of the Aurora 4000 angular sensitivity function $Z^{Aurora4000}(0^\circ, \theta)$ and therefore some circularity in our analysis. However, the calculated Aurora 4000 angular correction for this size is very small (1 %).

Since mineral dust is expected to absorb in the green and blue wavelengths, the particle absorption coefficient was measured by the TAP at three different wavelengths: blue (467 nm), green (528 nm), and red (652 nm). The particle absorption coefficients were corrected using the angular correction developed by Bond et al. (1999) and refined by Ogren (2010). The single scattering albedo SSA was calculated from the particle extinction coefficient measured by the CAPS PM_{ext} at $\lambda = 530$ nm and the particle absorption coefficient measured by the TAP at $\lambda = 528$ nm and resulted in the range 0.95 – 0.99 for mineral dust measurements, in agreement with literature values (Ansmann et al., 2011; Schladitz et al., 2009; Müller et al., 2011b; Petzold et al., 2011). The related uncertainty for SSA in the range 0.95 – 0.99 and raw (i.e., uncorrected) absorption coefficient $> 3 \text{ Mm}^{-1}$ is estimated to increase from 35 % to 100 % as SSA increases (Ogren et al., 2017). Even considering the highest uncertainty ($\sim 100\%$), this error hardly affects the difference between particle extinction coefficient and particle absorption coefficient because we measured only weakly absorbing aerosol with a low absorption coefficient. For all the measurements where some absorption is expected, the difference between particle extinction coefficient and particle absorption coefficient is considered as the reference value for light scattering because it is the best we can get for weakly absorbing irregular particles in the coarse mode. If the aerosols are expected to be non-absorbing as for PSL particles, AS, and synthetic silica, the particle absorption coefficient is set to zero and the particle extinction coefficient measured by the CAPS PM_{ext} is set as a reference value.

The Horvath’s polar nephelometer was deployed to measure the particle phase function $P_p(\theta)$ at $\lambda = 532$ nm. Its detector is mounted on a rotating arm with an angular resolution of 5° , which can be moved between 5° and 175° , detecting the light scattered into its direction. A complete measurement cycle takes 35 min. Calibrations were performed with CO_2 and particle-free air. The extrapolation procedure described in Horvath (2015) is used in order to extend the phase function to 0° and 180° . The accuracy of the full integration of the phase function given by this procedure is 1 %. However, the particle phase function measured by Horvath’s polar nephelometer has high uncertainty due to the low temporal resolution of the instrument and the highly variable concentration during mineral dust measurements. For compensation of the variable signal, Horvath’s polar nephelometer signal at each measurement angle is divided by the 1-minute average Aurora 4000 particle scattering coefficient $\sigma_{sp}^{Aurora4000,0^\circ}$ at the green wavelength. Since $\sigma_{sp}^{Aurora4000,0^\circ}$ is proportional to the particle concentration and the aerosol type does not change, the value obtained at each angle is proportional to the particle angular scattering function $\gamma_p(\theta)$. The particle phase function $P_p(\theta)$ is obtained by normalization. In the data set collected during this experiment, there are few cases where the extrapolation procedure performed to extend the particle phase function to 0° leads to a decreasing phase function from 10° to 0° . These results were considered unrealistic and excluded from further data analysis.

For each measurement, data were averaged along sequences with constant number concentration or along the 35-minutes measurements of Horvath’s polar nephelometer even if the number concentration is not constant. The result is not affected as long as the average is performed at the same time for all instrumentation. No significant variation of the scattering Ångström exponent $\text{SAE}(\lambda_B, \lambda_R)$ was observed during the selected sequences. We considered all measured quantities at the green

315 wavelength. Although the instruments involved have slightly different wavelengths (up to 7 nm difference), no wavelength correction has been considered.

The particle size distribution was obtained by merging the particle size distribution measured by the UHSAS in the range 0.06 – 0.374 μm and the OPS 3330 in the range 0.374 – 10 μm . The counting efficiency of the two instruments was estimated by comparing their particle number concentration with the particle number concentration given by the CPC in monodisperse ammonium sulfate aerosols. The accuracy of the CPC number concentration reported by the manufacturer is 10 %. The calibration of the two OPSs was performed with PSL particles. The calibration accuracy was found to be $\pm 2.5\%$ for the UHSAS and $\pm 5\%$ for the OPS 3330, in agreement with the estimate given by the manufacturer. The particle number concentration was mainly below the single particle counting limits reported by the manufacturers of the three instruments. The particle loss in the tubes from the dilution chamber to the different instruments was estimated to be similar for all instruments except for the UHSAS and the OPS 3330, using the Particle Loss Calculator software (PLC, von der Weiden et al., 2009). A size-dependent correction factor was estimated and applied to the UHSAS and the OPS 3330 measurements. Further details are reported in the supplementary information.

The particle size distribution was obtained assuming the PSL particle refractive index, e.g., the PSL-equivalent nominal diameter values for the bin boundaries provided by the manufacturer. The PSL equivalent size distribution was used to calculate the OPS particle scattering coefficient and the OPS particle phase function via optical simulations. The optical simulations were performed with the program MOPSMAP (Gasteiger and Wiegner, 2018), using the option to give the binned size data directly as input. We considered spherical shapes only (Mie code) and the refractive index of PSL particles was used, i.e., $m = 1.591 + i0.00$ at $\lambda = 450$ nm, $m = 1.582 + i0.00$ at $\lambda = 525$ nm, and $m = 1.574 + i0.00$ at $\lambda = 635$ nm taken from Devon and Rudin (1987). This choice was done to be consistent with the particle size distribution used as input where the PSL particle refractive index was assumed. To estimate the uncertainty of the simulated optical properties, the simulations were repeated 1000 times modifying randomly the number concentration and the bin diameters of the input data. More detailed information is provided in the supplementary information.

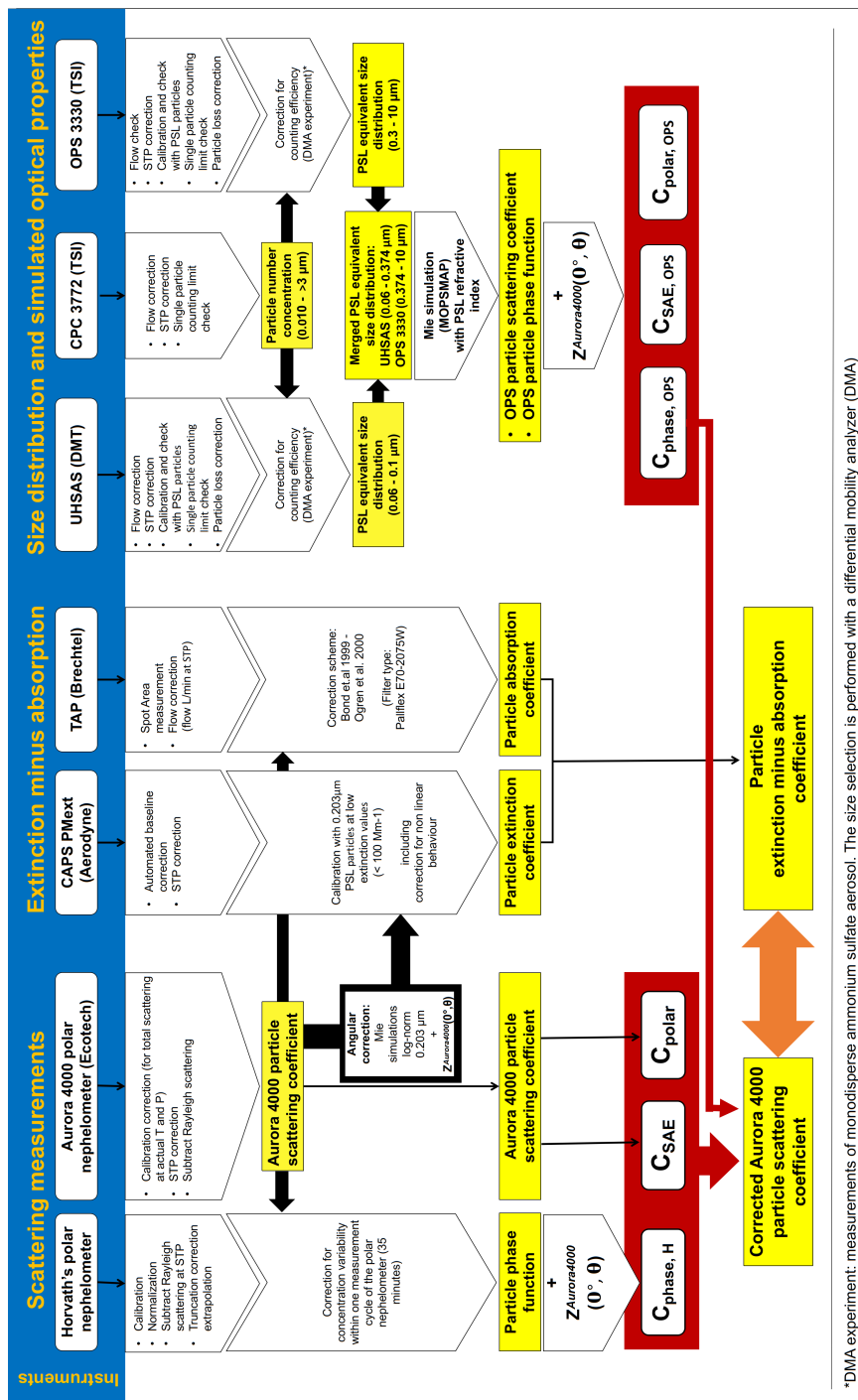


Figure 2. Flow chart of the data evaluation for the laboratory closure experiment. All measurement instruments involved in the laboratory closure experiment are on the top bar. The descending arrows illustrate the data elaboration to obtain from raw data the relevant quantities (in the yellow boxes) and the different angular corrections (in the red boxes). Thick black arrows indicate when data are used in the data processing of a different instrument.

4.3 Results of the laboratory closure experiment

The four angular corrections C_{SAE} , C_{polar} , $C_{phase,H}$, and $C_{phase,OPS}$ were tested by applying each of them to the Aurora
340 4000 particle scattering coefficient at $\lambda_G = 525$ nm, called corrected $\sigma_{sp}^{Aurora4000,0^\circ}$, and comparing it to the difference between the particle extinction coefficient and the particle absorption coefficient ($\sigma_{ep} - \sigma_{ap}$), where σ_{ep} and σ_{ap} were measured by a CAPS PM_{ext} at $\lambda = 530$ nm and by a TAP at $\lambda = 528$ nm, respectively. $\sigma_{ep} - \sigma_{ap}$ represents the reference value for the particle scattering coefficient as discussed in Sect. 4.1. The ratios of corrected $\sigma_{sp}^{Aurora4000,0^\circ}$ to ($\sigma_{ep} - \sigma_{ap}$) as function of the PSL equivalent volume median diameter (PSL eq. VMD) are shown in Fig.3. Each row of Fig.3 (e.g., a-b, c-d, e-f,
345 or g-h) shows results for a different angular correction. The results for monodisperse aerosols (PSL and AS) are shown in the panels on the left (Fig.3a, c, e, g), the results for polydisperse aerosols (mineral dust, silica dust and volcanic ash) in the panels on the right (Fig.3b, d, f, h). Results of a correlation analysis for each angular correction are reported in Table 4. The slope of linear regression through the origin and the coefficient of determination were calculated for each angular correction vs. $(\sigma_{ep} - \sigma_{ap})/\sigma_{sp}^{Aurora4000,0^\circ}$, which represents the reference angular correction. The slopes represent the average deviation
350 from 1 of the ratio between the corrected $\sigma_{sp}^{Aurora4000,0^\circ}$ and the reference particle scattering coefficient. Further details for each correction are described in the following sections.

4.3.1 Results for the angular correction C_{SAE}

The angular correction C_{SAE} (Eq.13), using the scattering Ångström exponent, was calculated with the parameters in Table 3. For the monodisperse aerosol measurement, we used the parameters for sub- μm size cut-off in the case of nominal $d < 1 \mu\text{m}$
355 and the one for no size cut-off in the case of nominal $d > 1 \mu\text{m}$. For polydisperse aerosol measurements, we used the parameters for no size cut-off.

The $\sigma_{sp}^{Aurora4000,0^\circ}$ corrected with the angular correction C_{SAE} agree with $\sigma_{ep} - \sigma_{ap}$ within $\pm 15\%$ for most of the measurements (Fig.3a, b). In particular, the agreement is excellent for polydisperse measurement with volume median diameter smaller than $2 \mu\text{m}$, with almost all values of the ratio between corrected $\sigma_{sp}^{Aurora4000,0^\circ}$ and $(\sigma_{ep} - \sigma_{ap})$ equal to 1 within the
360 expected uncertainties (Fig.3b). For larger volume median diameter, the angular correction C_{SAE} leads to an underestimation of $\sigma_{ep} - \sigma_{ap}$ by up to 15 %, showing a slightly size-dependent performance. For monodisperse aerosol larger than $1 \mu\text{m}$, the corrected $\sigma_{sp}^{Aurora4000,0^\circ}$ underestimates $\sigma_{ep} - \sigma_{ap}$ by about 20 % (Fig.3b). Results from the linear regression analysis show that the angular correction C_{SAE} underestimates the reference angular correction on average by 8 % for the monodisperse aerosol measurements and by 7 % for the polydisperse aerosol measurements (Table 4).

365 4.3.2 Results for the angular correction C_{polar}

The angular correction C_{polar} (Eq.14), using the polar measurements of the Aurora 4000 particle scattering coefficients, shows a performance that strongly depends on particle size for both monodisperse and polydisperse aerosol. The agreement between corrected $\sigma_{sp}^{Aurora4000,0^\circ}$ and $(\sigma_{ep} - \sigma_{ap})$ is within $\pm 10\%$ for small sizes (PSL eq.VMD < 600 nm). Conversely, for larger sizes the corrected $\sigma_{sp}^{Aurora4000,0^\circ}$ underestimates $(\sigma_{ep} - \sigma_{ap})$ by up to 40 % (Fig.3c, d). Results from the linear regression

370 analysis show that the angular correction C_{polar} underestimates the reference angular correction on average by 13 % for the monodisperse aerosol measurements and by 23 % for the polydisperse aerosol measurements (Table 4).

4.3.3 Results for the angular correction $C_{phase,H}$

The angular correction $C_{phase,H}$, using the phase function measured by Horvath's polar nephelometer, shows a performance that does not depend on particle size but generally underestimates $(\sigma_{ep} - \sigma_{ap})$. The corrected $\sigma_{sp}^{Aurora4000,0^\circ}$ is in agreement
375 with $(\sigma_{ep} - \sigma_{ap})$ for only a few measurements, while it underestimates $(\sigma_{ep} - \sigma_{ap})$ by 23 % in the worst case (Fig.3e, f). Results from the linear regression analysis show that the angular correction $C_{phase,H}$ underestimates the reference angular correction on average by 12 % for the polydisperse aerosol measurements (Table 4).

4.3.4 Results for the angular correction $C_{phase,OPS}$

The angular correction $C_{phase,OPS}$, using the particle phase function simulated considering the UHSAS and OPS PSL equiv-
380 alent size distributions, shows a performance that does not depend on particle size. The corrected $\sigma_{sp}^{Aurora4000,0^\circ}$ agrees within ± 20 % with $(\sigma_{ep} - \sigma_{ap})$ for all sizes and aerosol type. In particular, the agreement for the large size (VMD $> 2 \mu\text{m}$) of the polydisperse aerosol measurement is within ± 10 % (Fig.3g, h). Results from the linear regression analysis show that the angular correction $C_{phase,OPS}$ underestimates the reference angular correction on average by 7 % for both the monodisperse and the polydisperse aerosol measurements (Table 4).

385 4.3.5 Results of the comparison among different angular corrections

To compare different angular corrections, we performed a correlation analysis among all the considered angular corrections. The slopes of linear regression through the origin and coefficients of determination obtained are reported in Table 5 for monodisperse aerosols and in Table 6 for polydisperse aerosols. In Tables 5 and 6, results highlighted in bold indicate an agreement within ± 3 %.

390 The angular corrections C_{SAE} and C_{polar} agree within ± 3 % with the corresponding OPS-simulated angular corrections, called $C_{SAE,OPS}$ and $C_{polar,OPS}$ (See Fig.2 and related text in Sec.4.1), both for the monodisperse and polydisperse cases. The angular correction $C_{phase,OPS}$ agrees within ± 3 % with C_{SAE} , $C_{SAE,OPS}$, and $C_{polar,OPS}$ for the monodisperse aerosol measurements and with C_{SAE} and $C_{SAE,OPS}$ for the polydisperse aerosol measurements.

The angular correction $C_{phase,H}$, obtained with the phase function measured with Horvath's polar nephelometer, agrees within
395 6 % with the angular correction $C_{phase,OPS}$, obtained from the OPS-simulated phase function for the polydisperse measurements.

In the case of the polydisperse aerosol measurements, the agreement within ± 3 % between each angular correction and the corresponding OPS-simulated is surprisingly good. First, the refractive index of the calibration material was assumed in the size distribution retrieval. Second, we did not consider any irregular shape effect, even if our polydisperse aerosols are irregularly
400 shaped. Based on previous closure experiments (Schladitz et al., 2009, 2011), we did not expect to achieve good agreement

using Mie theory for irregularly shaped particles. This result leads us to the following questions: what is the impact of particle shape on the nephelometer angular truncation and illumination error? What is the impact of different refractive indices and shapes on the angular correction $C_{phase,OPS}$ derived from the size distribution measured by an OPS? What is the effect of different possible approaches (e.g., assuming different refractive indices) to obtain the OPS size distribution and the simulated
405 angular correction $C_{phase,OPS}$? To answer these questions and interpret the laboratory experiment results, we performed an extensive modeling effort simulating the TSI OPS 3330 response for several particle types.

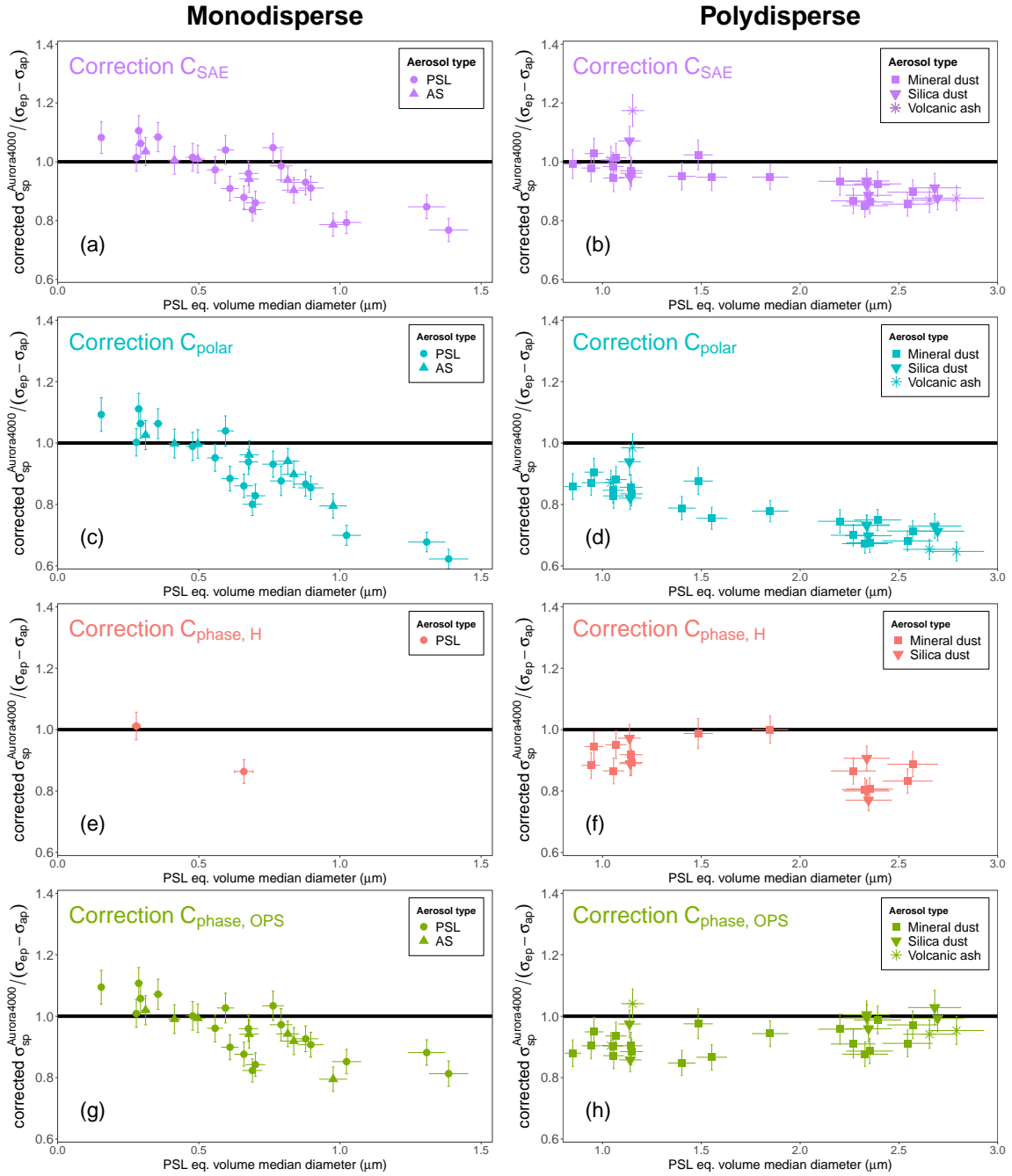


Figure 3. Result of the laboratory experiment for each angular correction. Ratio of the Aurora 4000 particle scattering coefficient corrected for angular truncation and illumination error ($\text{corrected } \sigma_{sp}^{Aurora4000,0^\circ}$) and the difference between the particle extinction coefficient and the particle absorption coefficient ($\sigma_{ep} - \sigma_{ap}$) vs. the measured PSL σ_{sp} equivalent volume median diameter. Each panel row shows the results for the $\sigma_{sp}^{Aurora4000,0^\circ}$ corrected with a different angular correction: (a, b) for the angular correction C_{SAE} ; (c, d) for the angular correction C_{polar} ; (e, f) for the angular correction $C_{phase, H}$; (g, h) for the angular correction $C_{phase, OPS}$. Monodisperse aerosol measurements are reported in the panels on the left (a, c, e, g); polydisperse aerosol measurements are reported in the panels on the right. Error bars represent the 95 % confidence interval. Different symbols refer to different aerosol types.

Table 4. Results of the regression analysis ($C_{columns} = slope(\sigma_{ep} - \sigma_{ap})/\sigma_{sp}^{Aurora4000,0^\circ}$ and the coefficient of determination R^2) of each angular correction in the table columns $C_{columns}$ and the ratio between the reference particle scattering coefficient vs. the Aurora 4000 particle scattering coefficient, $(\sigma_{ep} - \sigma_{ap})/\sigma_{sp}^{Aurora4000,0^\circ}$.

$C_{columns}$		C_{SAE}	C_{polar}	$C_{phase,H}$	$C_{phase,OPS}$	
$(\sigma_{ep} - \sigma_{ap})/\sigma_{sp}^{Aurora4000,0^\circ}$	Monodisperse	slope	0.92 ± 0.02	0.87 ± 0.03	-	0.93 ± 0.02
		R^2	0.989	0.978	-	0.992
	Polydisperse	slope	0.93 ± 0.01	0.77 ± 0.02	0.88 ± 0.02	0.93 ± 0.01
		R^2	0.995	0.987	0.994	0.997

Table 5. Monodisperse aerosol: PSL and AS. Results of the regression analysis ($C_{rows} = slope \cdot C_{columns}$ and coefficient of determination R^2) of each angular correction reported in the table rows C_{rows} vs. each angular correction reported in the table columns $C_{columns}$. Results within $\pm 3\%$ are highlighted in bold.

$C_{rows} \backslash C_{columns}$		C_{SAE}	C_{polar}	$C_{SAE,OPS}$	$C_{polar,OPS}$	$C_{phase,OPS}$
C_{SAE}	slope	1	1.04 ± 0.01	0.995 ± 0.002	1.02 ± 0.01	0.996 ± 0.005
	R^2	1	0.996	0.99999	0.998	0.999
C_{polar}	slope	-	1	0.95 ± 0.01	0.978 ± 0.005	0.95 ± 0.02
	R^2	-	1	0.995	0.999	0.993
$C_{SAE,OPS}$	slope	-	-	1	1.03 ± 0.01	1.002 ± 0.004
	R^2	-	-	1	0.997	0.9996
$C_{polar,OPS}$	slope	-	-	-	1	0.97 ± 0.01
	R^2	-	-	-	1	0.995

Table 6. Polydisperse aerosol: mineral dust, silica dust, and volcanic ash. Results of the regression analysis ($C_{rows} = slope \cdot C_{columns}$ and coefficient of determination R^2) of each angular correction reported in the table rows C_{rows} vs. each angular correction reported in the table columns $C_{columns}$. Results within $\pm 3\%$ are highlighted in bold.

$C_{row} \backslash C_{col}$		C_{SAE}	C_{polar}	$C_{phase,H}$	$C_{SAE,OPS}$	$C_{polar,OPS}$	$C_{phase,OPS}$
C_{SAE}	slope	1	1.22 ± 0.01	1.06 ± 0.01	0.973 ± 0.004	1.22 ± 0.01	0.99 ± 0.02
	R^2	1	0.997	0.997	0.999	0.997	0.993
C_{polar}	slope	-	1	0.88 ± 0.02	0.802 ± 0.004	1.004 ± 0.002	0.82 ± 0.02
	R^2	-	1	0.995	0.999	0.9998	0.983
$C_{phase,H}$	slope	-	-	1	0.91 ± 0.01	1.14 ± 0.02	0.94 ± 0.02
	R^2	-	-	1	0.997	0.994	0.994
$C_{SAE,OPS}$	slope	-	-	-	1	1.252 ± 0.007	1.03 ± 0.02
	R^2	-	-	-	1	0.999	0.989
$C_{polar,OPS}$	slope	-	-	-	-	1	0.82 ± 0.02
	R^2	-	-	-	-	1	0.984

5 Simulated closure experiment

5.1 Simulation methods

We conducted a simulated closure experiment to answer the questions raised by the laboratory experiment result, in particular concerning the effect of particle shape on the determination of the particle scattering coefficient. We estimated the effect of the particle shape on the "original" angular correction C_{0° (See Eq.10 with $\alpha = 0^\circ$) and on the two methods to calculate the angular correction that showed the best results for mineral dust aerosol during the laboratory experiment, the C_{SAE} and $C_{phase,OPS}$. The overall goal of these simulations is to estimate the effect of the different approaches on the angular correction $C_{phase,OPS}$, e.g., assuming different refractive indices for the particle size distribution retrieval.

The flow chart for this simulated closure experiment is represented in Fig.4. Several size distributions and refractive indices were selected randomly among values indicated in the left box of Fig.4. The "original" angular correction C_{0° was calculated directly on a given diameter grid for the input particle size distributions, refractive indices, and shapes. For homogeneous spherical particles, we hereafter will call it spherical C_{0° , and for irregular particles irregular C_{0° . The irregular C_{0° was compared with the spherical C_{0° obtained for volume-equivalent spheres with the same particle size distribution and refractive index (green arrow Fig.4). The response of the TSI OPS 3330 and the angular correction $C_{phase,OPS}$ for the selected particle size distributions and particle types were simulated (step 1-5 in Fig.4). The angular corrections $C_{phase,OPS}$ obtained with different approaches were compared with the "original" angular correction C_{0° obtained for the same aerosol types (blue arrow Fig.4). We performed the same comparison for the angular correction C_{SAE} .

We selected 5000 random samples with particle size distributions and refractive indices similar to previous studies on the nephelometer angular correction (Anderson and Ogren, 1998; Müller et al., 2011a; Bond et al., 2009; Massoli et al., 2009). The particle size distributions were bimodal log-normal with the geometric volume mean diameter varying in the range 0.2–0.4 μm for the fine mode and in the range 2.0 – 4.0 μm for the coarse mode. The geometric standard deviation varied in the range 1.6 – 2.2. Fine mode volume fraction varied in the range 0.1 – 0.9. Half of the simulations were performed with sub- μm size cut-off, half of them with no size cut-off. The real part of the refractive index varied in the range 1.33 – 1.70 and the imaginary part in the range 0.0 – 0.3. Calculations were performed for homogeneous spherical particles using the miepython module, developed by Scott Prahl and based on Wiscombe (1980).

Additionally, we selected 1000 random samples with refractive indices similar to mineral dust aerosol (e.g., Di Biagio et al. (2019)): the real part of the refractive index was chosen between 1.50 and 1.55, and the imaginary part was selected in the range 0.000 – 0.016. The calculations for these samples were repeated twice for homogeneous spherical particles and for irregular shapes selected among mineral dust shapes from Gasteiger et al. (2011) and using the discrete dipole approximation code (ADDA, Yurkin and Hoekstra, 2011).

The selected values of the refractive index for each case are referred to hereafter as well as in Fig.4 as the "true" refractive index ($n_{true} + ik_{true}$).

Calculations were performed on a diameter grid with size range corresponding to the TSI OPS detection limits. The OPS diameter detection limits corresponding to each $n_{true} + ik_{true}$ were calculated via Mie theory considering the manufacturer-

provided diameter detection limits of 0.3 – 10 μm for homogeneous spherical particles with refractive index $1.59 + i0.00$. In the case of irregularly shaped particles, the ADDA calculations were limited up to a volume equivalent diameter of 5.8 μm .

Although particles smaller than 0.3 μm are still relevant for the calculation of the angular correction, here we limited the calculations to the OPS size range because we would like to assess the impact of the assumptions of refractive index and shapes
445 in calculating the angular correction from the size distribution measured by an OPS. Considering a size range of 0.06 – 10 μm and combining the size distribution of UHSAS and OPS 3330, we obtained similar results, but we did not report these results here.

For each randomly sampled set of particle size distribution, refractive index, and shape, the response of the TSI OPS 3330 was simulated (step 1-2-3, Fig.4). An optical particle spectrometer, such as the TSI OPS 3330, measures the scattering cross-
450 section (OPS C_{sca}) by collecting with a mirror the light scattered in the angular range $30^\circ - 150^\circ$. We simulated the OPS $C_{sca,i}$ for each diameter of the grid d_i (step 1, Fig.4), using a (custom) Mie code based on Bohren and Huffman (2008) for homogeneous spherical particles and the ADDA code from Yurkin and Hoekstra (2011) for the mineral dust-like shapes from Gasteiger et al. (2011). In the latter, the orientations and shapes were selected randomly for each d_i . Each simulated OPS C_{sca} was sorted into the corresponding OPS bin (step 2, Fig.4). In order to perform this step, we had to convert the
455 manufacturer-provided diameter bin boundaries for the calibration material ($m = 1.59 + i0.00$) into scattering cross-section bin boundaries. The randomly sampled size distribution was considered only in the following step, to reduce the computational time (step 3, Fig.4). As a result, we obtained the counts for each of the 16 bins of the TSI OPS 3330. Based on this simulated OPS histogram, we used three different approaches to calculate the particle size distribution (step 4, Fig.4) and the angular correction $C_{phase,OPS}$ (step 5, Fig.4):

460 **Approach a:** The particle size distribution was obtained (step 4, Fig.4) with the manufacturer-provided PSL-equivalent nominal diameter values for the bin boundaries. The angular correction $C_{phase,OPS}$ was calculated (step 5, Fig.4) via Mie theory with the refractive index of the calibration material, i.e., the refractive index of PSL particles ($1.59+i0.00$).

Approach b: The particle size distribution was obtained (step 4, Fig.4) with the manufacturer-provided PSL-equivalent nominal diameter values for the bin boundaries. The angular correction $C_{phase,OPS}$ was calculated (step 5, Fig.4) via Mie
465 theory with the "true" refractive index, i.e., the randomly selected refractive index used as an input.

Approach c: The particle size distribution was obtained (step 4, Fig.4) with diameter values of the bin boundaries calculated through an inversion procedure. As a refractive index, we assumed the "true" refractive, i.e., the randomly selected refractive index used as an input. The angular correction $C_{phase,OPS}$ was calculated (step 5, Fig.4) via Mie theory with the "true" refractive index.

470 In addition, we calculated the angular correction C_{SAE} for the same size distributions and aerosol types. For the calculation of the correction C_{SAE} the parameters obtained with sub- μm size cut-off or with no size cut-off are used in the corresponding case.

Further details of the method used for this sensitivity study are described in the supplementary information.

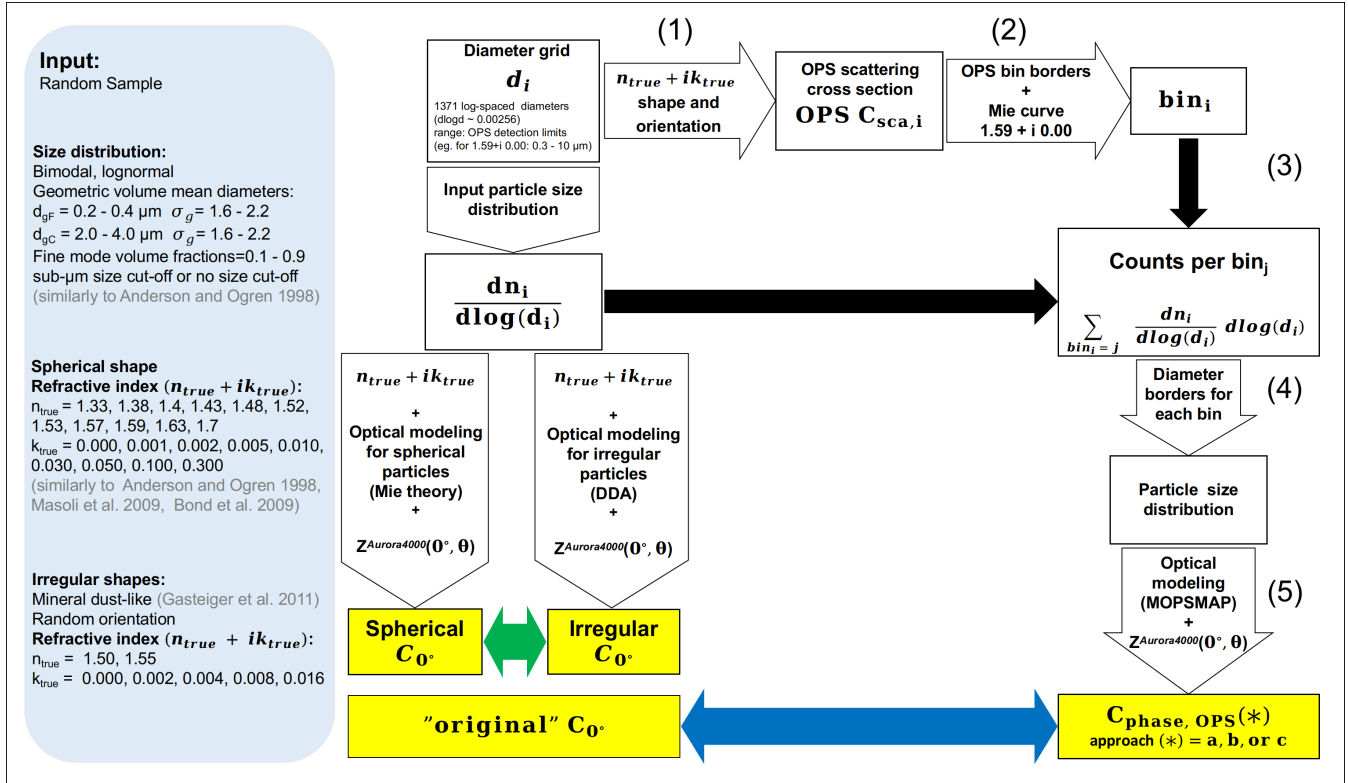


Figure 4. Flow chart for the simulated closure experiment. The input parameters are selected randomly among the values indicated in the left box. The "original" angular correction C_{0° is calculated directly on a given diameter grid for the input size distributions and refractive indices (left side of the flow chart), for homogeneous spherical particles with Mie calculations (spherical C_{0°) and for irregular particles with discrete dipole approximation (irregular C_{0°). To simulate the angular correction $C_{phase,OPS}$ corresponding to each "original" C_{0° considered, the steps 1-5 are performed. Different approaches to run the five steps are possible.

5.2 Results of the simulated closure experiment

475 5.2.1 Non sphericity effect on the angular correction

To estimate the effect of the particle shape on the nephelometer angular correction, we compared the angular correction for randomly oriented mineral dust-like irregular particles with the angular correction obtained for the volume equivalent spheres with the same size distribution and refractive index (green arrow Fig.4). In the case of size distribution with sub- μm cut-off, the angular correction obtained with Mie simulation (i.e., for spherical particles) underestimates the angular correction for irregular particles by 1 % on average as shown in Fig.5.a. In the case of size distribution with no cut-off, the angular correction obtained with Mie simulation (e.g., for spherical particles) underestimates the angular correction on average by 2 % and up to 3.5 %, as shown in Fig.5b. These results indicate that the effect of the non-spherical shape contributes to an uncertainty on the angular correction smaller than 3.5 %.

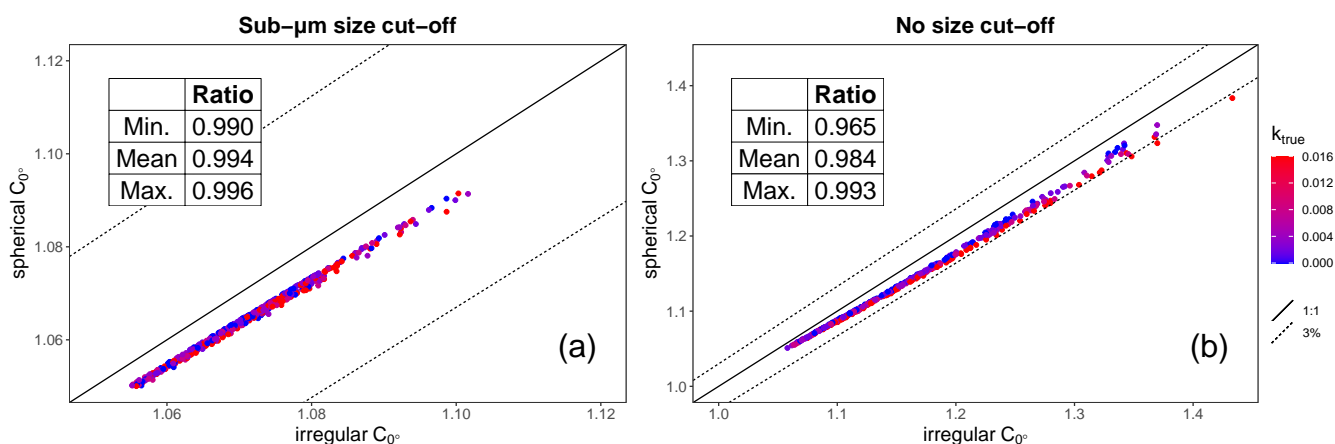


Figure 5. Comparison between the angular correction for irregular particles and for spherical particles. Calculations are performed for $\lambda = 525$ nm and on a diameter range 0.06 – 5.8 μm . The left panel shows the comparison for particle size distributions with sub- μm size cut-off. The right panel shows the comparison for particle size distributions with no size cut-off. The color indicates the imaginary part of the refractive index used in the simulations k_{true} . The solid line is the 1 : 1 line. The dashed lines are the $\pm 3\%$ lines. In the table are reported the minimum, mean, and maximum value of the ratio between spherical C_{0° and irregular C_{0° .

5.2.2 Results of the different approaches to calculate $C_{phase,OPS}$

485 The $C_{phase,OPS}$ calculated using the three different approaches (a, b, c; Sec.5.1) were compared with the “original” angular correction C_{0° calculated on the input size distribution considering the “true” refractive index and shape. For input particles with spherical shape, the comparison is done with the Mie-calculated spherical C_{0° , for input particles with irregular shape the comparison is done with the ADDA calculated irregular C_{0° (blue arrow Fig.4). The results of this comparison are summarized in Fig.6 for the size distribution with sub- μm size cut-off and in Fig.7 for the size distribution with no size cut-off. On each

490 column, the comparison for an angular correction $C_{phase,OPS}$ calculated with one of the three different approaches (See Sec.5.1) or for the angular correction C_{SAE} is shown. The six panel rows of Figs.6 and 7 report results for six aerosol categories:

1. Non-absorbing spherical particles, with $n_{true} = 1.59$.
2. Non-absorbing spherical particles, with $n_{true} = 1.33 - 1.70$.
3. Weakly absorbing spherical particles with $n_{true} = 1.33 - 1.70$ and $k_{true} = 0.001 - 0.010$.
- 495 4. Absorbing spherical particles with $n_{true} = 1.33 - 1.70$ and $k_{true} = 0.030 - 0.300$.
5. Weakly absorbing spherical particles with mineral dust-like refractive index $n_{true} = 1.50 - 1.55$ and $k_{true} = 0.000 - 0.016$.
6. Weakly absorbing irregular particles with mineral dust-like shape and refractive index $n_{true} = 1.50 - 1.55$ and $k_{true} = 0.000 - 0.016$.

500 Several observations can be made looking at the results represented in Figs.6 and 7. First, the panels in the first row of Figs.6 and 7 show that the effect of the TSI OPS 3330 binning on the angular correction is smaller than 0.7 %. Indeed, $1.59 + i0$ is the refractive index used for the calibration of the TSI OPS 3330 and, in this case, the difference between C_{0° and $C_{phase,OPS}$ is the result from the TSI OPS 3330 binning.

Second, if the particle size distribution is calculated with the calibration refractive index, the use of "true" refractive index
505 in the optical modeling of the angular correction $C_{phase,OPS}$ does not improve the accuracy significantly. Indeed, panels in the first and second columns (approaches a and b) look quite similar for all aerosol types, both with sub- μm and with no size cut-off.

Third, if the particle size distribution is calculated with the "true" refractive index, the agreement between $C_{phase,OPS}$ and the "original" C_{0° significantly improves, for all cases with spherical particles. The agreement is within 3 – 4 % for all weakly
510 absorbing aerosols with spherical particles for both with and with no size cut-off (row 2 and 3, column 3 of Figs.6 and 7).

Fourth, in the case of absorbing aerosol, the $C_{phase,OPS}(c)$ calculated with the refractive index correction can have large uncertainties. In the case of size distributions with sub- μm size cut-off, when $k_{true} = 0.1 - 0.3$, $C_{phase,OPS}(c)$ overestimates C_{0° by up to 21 % (row 4, column 3 of Fig.6). The comparison plot shows unusual features as the retrieval procedure used for the refractive index correction failed. Indeed, the TSI OPS 3330 Mie curve for $k_{true} = 0.3$ is almost flat in the diameter range
515 from 0.5 to 1.0 μm . The angular correction C_{SAE} is accurate within 4 % in this case. In the case of size distributions with no size cut-off, $C_{phase,OPS}(c)$ can have up to ± 25 % uncertainty, when $k_{true} = 0.1 - 0.3$ (row 4, column 3 of Fig.7).

Finally, an interesting result is found in the case of irregular particles when no size cut-off is considered (last panel row of Fig.7). The angular correction $C_{phase,OPS}(a)$, obtained with the refractive index of the calibration material, agrees on average with the "original" C_{0° within 0.3%. However, the relationship is strongly dependent on the imaginary part of the
520 refractive index. If $k_{true} = 0.000$, $C_{phase,OPS}(a)$ overestimates the "original" C_{0° up to 8 %. If $k_{true} = 0.016$, $C_{phase,OPS}(a)$ underestimates the "original" C_{0° up to 18 %. Surprisingly, when the "true" refractive index is taken into account, the angular correction $C_{phase,OPS}(c)$ systematically overestimates the "original" C_{0° on average by 5% and up to 22% in the worst case.

Sub- μm size cut-off

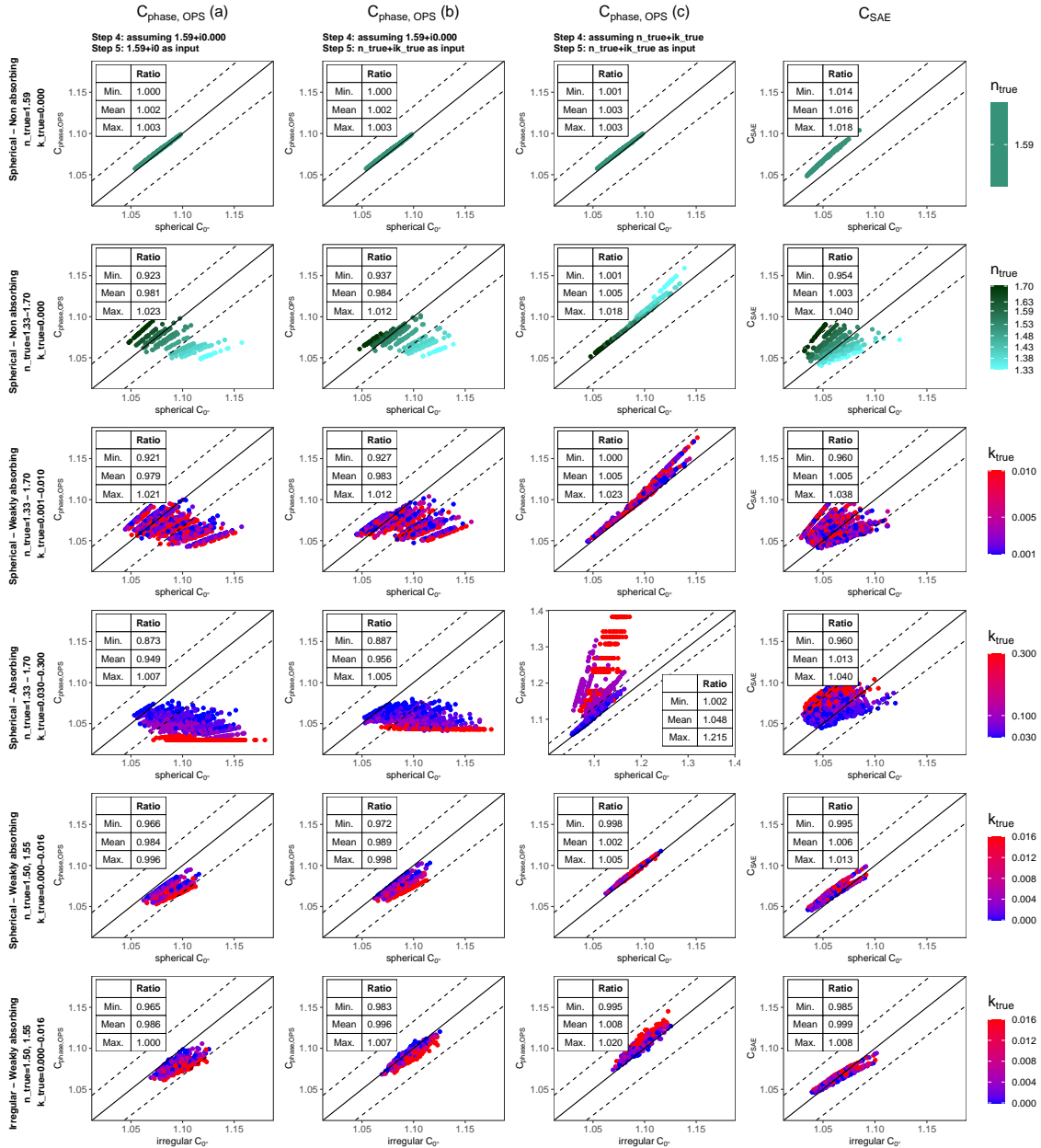


Figure 6. Simulated closure experiment to assess the limitations and uncertainties of the angular correction obtained with Mie theory from the size distribution measured by an OPS. The comparison for the angular correction $C_{phase,OPS}$ calculated with the three approaches (a, b, c) are shown in the first three columns. The comparison for the angular correction C_{SAE} is reported in the last column. Different lines refer to different aerosol input. The color code indicates different values of the real part of the refractive index for the non absorbing cases (rows 1-2) and of the imaginary part of the refractive index for all the other cases (rows 3-6). The solid lines are the 1:1 lines. The dashed lines are the $\pm 3\%$ lines. In the tables are reported the minimum, mean, and maximum value of the ratio between the quantity reported in the y axis and the quantity reported in the x axis.

No size cut-off

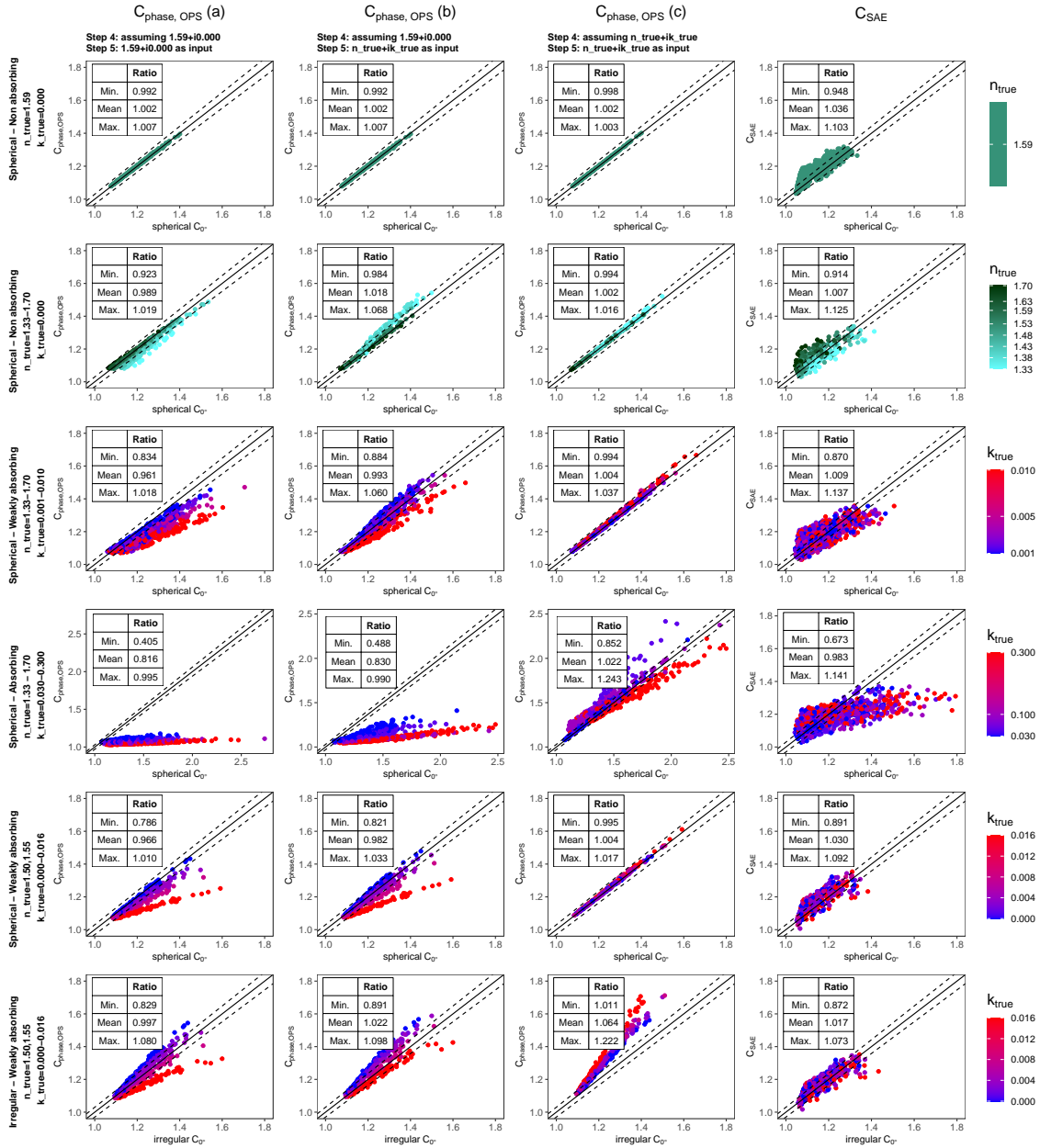


Figure 7. Simulated closure experiment to assess the limitations and uncertainties of the angular correction obtained with Mie theory from the size distribution measured by an OPS. The comparison for the angular correction $C_{\text{phase, OPS}}$ calculated with the three approaches (a, b, c) are shown in the first three columns. The comparison for the angular correction C_{SAE} is reported in the last column for comparison. Different rows refer to different aerosol input. The color code indicates different values of the real part of the refractive index for the non absorbing cases (rows 1-2) and of the imaginary part of the refractive index for all the other cases (rows 3-6). The solid lines are the 1:1 lines. The dashed lines are the $\pm 3\%$ lines. In the tables are reported the minimum, mean, and maximum value of the ratio between the quantity reported in the y axis and the quantity reported in the x axis.

6 Discussion

6.1 Nephelometer angular corrections

525 Integrating nephelometer measurements require an angular correction to provide the particle scattering coefficient. Several methods to calculate the angular correction are available in the literature and are covered by our laboratory and modeling study. The applicability and uncertainty of these corrections depend on the particle type and the availability of other measurements.

The angular correction C_{polar} is a method developed by Müller et al. (2012). Nephelometer data corrected with the angular correction C_{polar} (Fig.3c-d) are in agreement with the reference particle scattering coefficient only for particles with sizes
530 smaller than $1\mu m$, while they strongly underestimate (up to $\sim 40\%$) the particle scattering coefficient for larger particle sizes. This observation is in agreement with the model calculation performed by Müller et al. (2012). Müller et al. (2012) showed as well that this correction is not affected by the imaginary part of the refractive index and that it can reduce the uncertainty of the angular correction for sub- μm to about 2% .

The angular correction C_{SAE} is the method most commonly used in literature (e.g., Pandolfi et al., 2018; Valenzuela et al.,
535 2015; Costabile et al., 2013; Clarke et al., 2007). Nephelometer data of polydisperse coarse mode irregularly shaped aerosols corrected with the angular correction C_{SAE} (Fig.3b) are in very good agreement with the reference particle scattering coefficient for small volume median diameters ($< 2\mu m$). For volume median diameters larger than $2\mu m$, the reference particle scattering coefficient is underestimated up to 15% . This performance is much better than the one achieved with the C_{polar} angular correction. This result is in agreement with the model calculations of weakly absorbing polydisperse aerosol of spherical
540 and irregularly shaped particles (Fig.7 last panel column, rows 3, 5, and 6), which show that the angular correction C_{SAE} has an overall uncertainty of about $\pm 13\%$. A possible explanation for the underestimation of the angular correction C_{SAE} for large particle sizes (volume median diameter $> 2\mu m$) is that the SAE is already around zero. Even if the SAE can reach slightly negative numbers, it is no longer linearly related to the particle size.

The overall higher uncertainty of the angular correction C_{SAE} for coarse mode aerosol is already highlighted by Anderson
545 and Ogren (1998). For this reason, they introduce the sub- μm size segregation and point out that very accurate information, within a few per cent, on the particle scattering coefficient of sub- μm polydisperse non-absorbing aerosol can be achieved, as confirmed experimentally by Massoli et al. (2009).

Nevertheless, the angular correction C_{SAE} is not very accurate in the case of absorbing aerosol. The SAE is only indirectly related to the particle size, and this relationship is altered for absorbing particles. Bond et al. (2009) showed that the angular
550 correction C_{SAE} might have an error of about 5% for sub- μm aerosol. Even if this error looks rather small, they point out that the error is in the same order of magnitude as the angular correction for absorbing sub- μm particles. In addition, Massoli et al. (2009) showed this issue experimentally and pointed out that for sub- μm particles, the relationship between SAE and angular correction is also strongly dependent on the real part of the refractive index. Our calculations (last panel column of Fig.6) confirm the finding of Bond et al. (2009) and Massoli et al. (2009). In addition, our calculations for particle size distributions
555 with no size cut-off (Fig.7) show that, in extreme cases, if coarse mode highly absorbing particles are present, the uncertainty of the C_{SAE} correction may rise up to 33% .

The angular correction $C_{phase,OPS}$ is a rarely used method in literature (e.g., Di Biagio et al. (2019)) as it requires simultaneous particle size distribution measurements and also knowledge about refractive index and particle shape. For the mineral dust measurements, the performance of the angular correction $C_{phase,OPS}$ is surprisingly good (Fig.3.h) even though no refractive index or shape is considered in the size distribution retrieval. This result might lead one to the conclusion that there is no need to take into account the refractive index or shape of the measured aerosol for the calculation of the angular correction $C_{phase,OPS}$. The optical particle spectrometer is an optical cross-section selector rather than a particle sizer. The use of the refractive index of the calibration material might lead to compensations of the effects of refractive index and shapes on the measured particle size distribution (see supplementary information in Sec.S3 and Fig.S3) and, thus, on the calculated angular correction. Results of our simulated closure experiment (Fig.7, last row) suggest that the good performance of the angular correction $C_{phase,OPS}$ for mineral dust measurements (Fig.3h) might be partly due to a compensation of the non-spherical shape effect by the small imaginary part of the refractive index. In the case of mineral dust measurements, the particle size distribution by an OPS, obtained with the manufacturer-provided PSL-equivalent nominal diameters of the bin boundaries, leads to an angular correction which is on average correct (within $\pm 0.3\%$). However, $C_{phase,OPS}$ has a strong dependence on the imaginary part of the refractive index; it overestimates the true angular correction by up to 8% for non-absorbing particles and underestimates it by up to 17% for absorbing particles (Fig.7, last row, approach a).

The direct effect of particle shape on the angular correction itself (i.e., "original" C_{0°) is very small. Our calculations (Fig.5) show that the angular correction for dust-like irregularly shaped particles is on average 2% higher than the angular correction for volume equivalent spheres. This result is in agreement with the one obtained by Quirantes et al. (2008), who found that angular corrections calculated for oblate particles and prolate spheroids are similar within 1-2% to results obtained for equal-projected-area spheres. The observation that the near-forward scattering is quite insensitive to the particle shape (e.g., Mishchenko et al., 1995) further supports this finding.

If the "true" refractive index is assumed for the particle size distribution retrieval, the $C_{phase,OPS}$ is systematically overestimated on average by 5–6 % up to a maximum of 22 % (Fig.7 last row, approach c). This result highlights that even if the direct effect of the particle shape on the angular correction looks rather small, the non-sphericity contributes to a higher uncertainty in the determination of the particle size distribution and thus on the angular correction $C_{phase,OPS}$.

In the case of irregularly shaped particles, the angular correction C_{SAE} looks more accurate and it requires less effort than considering the non-sphericity for the retrieval of the size distribution. Our calculations show that the angular correction C_{SAE} is accurate on average within 2 % with an overall uncertainty of about $\pm 13\%$ (Fig.7 last row, last column). In addition, the angular correction C_{SAE} doesn't show a strong dependence on the imaginary part of the refractive index as the angular correction $C_{phase,OPS}(a)$, calculated with the refractive index of the calibration material.

Results of the simulated closure experiment show that the angular correction $C_{phase,OPS}$ calculated with the approach (c), e.g., assuming the "true" refractive index for both the particle size retrieval and the optical calculations, is more accurate than the ones calculated for the other approaches for all cases except for irregular particles (Fig.7). The overall uncertainties obtained are within a few percent for slightly absorbing particles but larger uncertainties (about $\pm 25\%$) are found for absorbing aerosol. Quite similar results were obtained for the other two approaches (a and b), where the angular correction $C_{phase,OPS}$

is calculated from the PSL equivalent particle size distribution and the optical simulations used the PSL refractive index for the approach (a) and the "true" refractive index for the approach (b). This result highlights that the angular correction is quite insensitive to the refractive index as also pointed out by Bond et al. (2009), who estimate about 2 % uncertainty due to the refractive index when calculating the angular correction with Mie theory. Our analysis points out that while the angular correction is quite insensitive to both the refractive index and the shape, it is critical to assume the correct refractive index and shape for the particle size distribution retrieval and in the calculation of the angular correction $C_{phase,OPS}$.

6.2 Implications for optical closure studies

Optical closure studies, where the aerosol optical properties measured directly are compared with the aerosol optical properties simulated using the measured size distribution and optics theory, allows not only the evaluation and minimizing of the measurement uncertainties but also constraining specific parameters. Iteratively comparing the measured particle scattering and absorption coefficient with the corresponding derived quantities, it is possible to retrieve the aerosol refractive index (e.g., Abo Riziq et al., 2007; Mack et al., 2010)

If the instruments' uncertainties are comparatively high, it is difficult to achieve a perfect closure, and the refractive index retrieval might fail. For instance, Schladitz et al. (2009, 2011) found discrepancies in the range 32 – 42 % between measured and Mie-simulated optical properties and could not determine an average refractive index in the case of high mineral dust particle concentrations. These studies attributed the discrepancies to a superposition of irregular shape effect on both the nephelometer angular correction and the sizing and counting uncertainty. While Schladitz et al. (2009, 2011) used a combination of a differential mobility particle sizer and an aerodynamic particle sizer, Di Biagio et al. (2019) could retrieve the refractive index of mineral dust within a chamber closure experiment using a combination of two OPSs. Even if they recognized the potential role of non-sphericity in affecting their results, they assumed the mineral dust to be spherical for the whole data treatment.

Our study suggests that while the particle shape affects the angular correction C_{0° only by 2 % (Fig.5), the overestimation of particle size of mineral dust by optical particle spectrometers can be estimated to result on average in about 5 % up to 22 % overestimation of the angular correction (Fig.7 last row, approach c). This result allows decoupling of the effect of the coarse mode irregular particles on the angular correction itself and on the measured size distribution. Our analysis suggests that the non-sphericity mainly affects the retrieval of the particle size distribution, and therefore a more accurate refractive index might be obtained by considering the shape in the particle size retrieval.

6.3 Limitations of the study

Measurement uncertainties of the measurement instruments Aurora 4000, CAPS PM_{ext} , and TAP might partly explain the observed deviations in the result of the laboratory experiment. An additional source of uncertainty is given by the parameters of the Aurora 4000 angular sensitivity function $Z^{Aurora4000}(0^\circ, \theta)$ (see Eq.5). Indeed, all angular corrections tested rely on the parameters and truncation angles of $Z^{Aurora4000}(0^\circ, \theta)$ (Table 1).

Differences in the angular sensitivity function of the Aurora 4000 and the Aurora 3000 (Müller et al., 2011a) leads to a difference of 3 – 6% in the angular correction C_{SAE} . The truncation angles of Aurora 4000 are 9° and 170° according to the

625 Aurora 4000 manual, while the truncation angles of Aurora 3000 are 10° and 171° (Müller et al., 2011a). To our knowledge,
there is no experimental method to verify these angles. In addition, the parameters of the Aurora 4000 angular illumination
function measured by Müller et al. (2012) are different from those of Aurora 3000 angular illumination function published by
Müller et al. (2011a). We cannot exclude that small differences may exist even within different units of the same model. The
Aurora 4000 used in this experiment was the Aurora 4000 of the University of Vienna, while the angular sensitivity function
630 was measured on the unit of the TROPOS Institute by Müller et al. (2012).

In our data analysis, we introduced some circularity when the CAPS PM_{ext} was calibrated considering the total particle
scattering coefficient for measurements of PSL with nominal diameter 200 nm, as discussed in section 4.2. The particle scat-
tering coefficient was obtained from the value measured by the Aurora 4000 corrected for angular truncation and illumination
error. The angular correction was calculated with the method C_{phase} , where the particle phase function was obtained via Mie
635 calculations assuming a log-normal particle size distribution and assuming the validity of $Z^{Aurora4000}(0^\circ, \theta)$. This correction
might contribute to compensations in the comparison between the reference particle scattering coefficient and the corrected
Aurora 4000 particle scattering coefficient. Nevertheless, the angular correction increases with particle sizes and the parameters
of the angular sensitivity function remain a source of uncertainty for coarse mode particles.

A method to evaluate the accuracy of the angular sensitivity function could consist of considering the angular correction
640 $C_{phase,H}$, obtained from the particle phase function measured by Horvath's polar nephelometer. Indeed, the latter doesn't re-
quire assumptions on the refractive index and shape of the measured aerosols. The particle scattering coefficient measured by
Horvath's polar nephelometer might be used as a reference value for this purpose. Unfortunately, it was not possible to obtain
the particle scattering coefficient from Horvath's polar nephelometer because of the very variable signal during dust measure-
ments and the low temporal resolution (35 min) of the instrument. The angular correction $C_{phase,H}$ leads to an underestimation
645 of the reference particle scattering coefficient of on average 12% (Table 4). Even if we do not fully understand the reasons for
this discrepancy, we can't attribute it completely to the uncertainty of the angular sensitivity function. Most probably, the use
of the 1-minute Aurora 4000 particle scattering coefficient to cope with the very variable signal introduced a high uncertainty.
The Horvath's polar nephelometer has been corrected for its angular truncation error considering an extrapolation procedure
(Horvath, 2015). Even if the accuracy reported for this procedure is better than 1 %, we cannot exclude being worse for our
650 measurements where the instability of the aerosol number concentration together with the use of coarse mode irregular particles
represents a major challenge.

7 Summary and conclusions

We performed an extensive closure study, including laboratory and modeling effort, to evaluate and compare different angular
corrections for the Aurora 4000 polar nephelometer. We focused on their performance for coarse mode irregular shaped aerosol
655 as for example, mineral dust, which is the most abundant aerosol worldwide in terms of dry mass (Choobari et al., 2014; Textor
et al., 2006). In the laboratory experiment, we used soil samples collected in desert areas, synthetic silica, and a volcanic
ash sample to generate polydisperse test aerosol. In addition, PSL particles and ammonium sulfate were used to generate

monodisperse test aerosol. We tested and compared four angular corrections: C_{SAE} using the measured scattering Ångström exponent, C_{polar} using the polar measurements of the particle scattering coefficient, $C_{phase,H}$ using the particle phase function measured by Horvath's polar nephelometer, $C_{phase,OPS}$ using the particle phase function simulated on the base of the size distributions measured by the two optical particle sizers.

We compared the particle scattering coefficients corrected with each angular correction with the reference particle scattering coefficient obtained as the difference between the measured particle extinction and absorption coefficients. As a result, we found that the angular correction C_{polar} is reliable for sub- μm particles while strongly underestimating the "true" particle scattering coefficient for larger particle sizes. The two angular corrections that showed the best performance for mineral dust measurements are C_{SAE} and $C_{phase,OPS}$, as they both underestimate the reference angular correction on average by 7%. The good performance of $C_{phase,OPS}$ for mineral dust aerosol looks surprisingly because a simple approach was used for its calculation. The refractive index of the calibration material was assumed for both the particle size distribution retrieval and the optical calculations. In addition, the non-spherical shape was not considered.

To interpret these results, we performed an extensive modeling effort, simulating a closure experiment for randomly selected particle size distributions, refractive indices, and shapes. First, we estimated the effect of the particle shape on the "original" angular correction C_{0° . We found that using the Mie theory to calculate the angular correction for mineral dust-like irregular shapes leads to an underestimation of about 2%. Second, we investigated the uncertainties of the two angular corrections C_{SAE} and $C_{phase,OPS}$ that showed the best performance for mineral dust measurements. The signal measured by a TSI OPS 3330 was simulated for the selected particle size distributions, refractive indices, and shapes.

The angular correction $C_{phase,OPS}$ was calculated with three different approaches: (a), (b), and (c) (See Fig.4 and related text). Overall, the angular correction $C_{phase,OPS}$ (c), which considers the refractive index of the selected aerosol for both the particle size distribution retrieval and the optical calculations, leads to an improvement in the agreement between the derived angular correction and the "original" angular correction C_{0° . An exception is the case of irregular particles, where the angular correction $C_{phase,OPS}$ (c) overestimates the "original" angular correction C_{0° on average by 5% and up to 22%. Using the angular correction $C_{phase,OPS}$ (a), i.e., the refractive index of the calibration material was assumed for both the particle size distribution retrieval and the optical calculations, the effect of the non-spherical shape seems to be almost compensated by the effect of the imaginary part of the refractive index. In conclusion, through an extensive closure experiment and modeling effort, we could decouple the effect of the coarse mode irregular particles on the angular correction itself and on the measured size distribution.

7.1 Recommendation for the use of an appropriate correction method

Based on the current knowledge and the present work, we conclude that there is no generally "best" method to calculate the angular correction. Rather the angular correction should be selected depending on the aerosol type and the investigated size range. The angular correction C_{SAE} is the most accurate in many of the analyzed cases and may serve as the 'default' method, even if its uncertainty can be relatively large (up to 33%). If higher accuracy of the particle scattering coefficient by a nephelometer is desired, the angular correction might be obtained via optical simulations from the measured aerosol size

distribution $C_{phase,OPS}$. However, the retrieval of the particle size distribution from the OPS would need to consider the correct refractive index and the particle shape, even if the direct effect of the particle shape on the nephelometer angular truncation and illumination error was found to be comparatively small.

695 We provide uncertainties for different approaches to calculate the angular correction from the measured particle size distribution, and we indicate the least uncertain approach for several situations. The reported uncertainties are calculated on the basis of the simulated closure experiment and do not consider the uncertainty of the angular sensitivity function. We recommend the procedure shown in the flow chart in Fig.8 to establish the nephelometer data correction method.

If the measurements are performed with a sub- μm cut-off or if the aerosol population is dominated by sub- μm aerosols,...

- 700
- ...and the nephelometer provides the scattering coefficient for various angular ranges (in particular $\sigma_{sp}^{Aurora4000,10^\circ}$ and $\sigma_{sp}^{Aurora4000,20^\circ}$), the angular correction C_{polar} can be used. The uncertainty for this method is 2% (Müller et al., 2012).
 - ...and the nephelometer does not provide the scattering coefficient for various angular ranges, the angular correction can be calculated with the C_{SAE} method, with 5% uncertainty.

A size segregation into sub- μm and total aerosol is often motivated by technical issues (e.g., the inlet efficiency). However, 705 a sub- μm cut-off may also be applied on purpose to better characterize the fine aerosol fraction (e.g., Cappa et al., 2016), in particular in mixtures where the fine and coarse mode aerosol are dominated by different aerosol types (e.g., in mineral dust and black carbon mixtures).

If the measurements are performed without a sub- μm cut-off or if the aerosol population is dominated by coarse mode aerosols,...

- 710
- ...the size distribution is not measured over a relevant size range, and/or the aerosol type is not known, the angular correction can be calculated with the C_{SAE} method. However, the uncertainty is up to 33% in the case of large ($> 1 \mu m$) absorbing particles.
 - ...the size distribution is measured over a relevant size range, the aerosol type is known, and the particles are spherical, the best method is the $C_{phase,OPS}$ with the approach (c), considering the "true" refractive index via an inversion procedure 715 to retrieve the measured size distribution. The uncertainty is 3 % in case of slightly absorbing aerosols, while it is 25% if the aerosols are highly absorbing.
 - ...the size distribution is measured over a relevant size range, the aerosol type is known, and the particles are desert dust, the angular correction C_{SAE} could be used. The uncertainty for this case is 13%. To further reduce the uncertainty, the correction $C_{phase,OPS}$ could be calculated from an optically measured size distribution, but it would need to consider 720 not only for the refractive index but also the irregular shape.
 - ...the size distribution is measured over a relevant size range, the aerosol type is known, and the particles are not desert dust, more investigation is needed on the angular correction. However, C_{SAE} can still be used but with an unknown uncertainty.

Last but not least, nephelometer data should always be reported in both forms with and without angular correction because the uncorrected nephelometer particle scattering coefficients might be used within a closure experiment to constrain the particle refractive index without introducing additional uncertainty in the nephelometer scattering coefficient by the angular correction method.

By improving the understanding of the nephelometer angular correction for irregularly shaped coarse particles - in particular mineral dust- this study reduces uncertainties in observations of aerosol scattering properties. Future studies with the aim of further reducing the uncertainty of scattering measurements should focus on environments with a high load of absorbing particles like urban sites or moderately absorbing mixtures such as mixtures of mineral dust and black carbon.

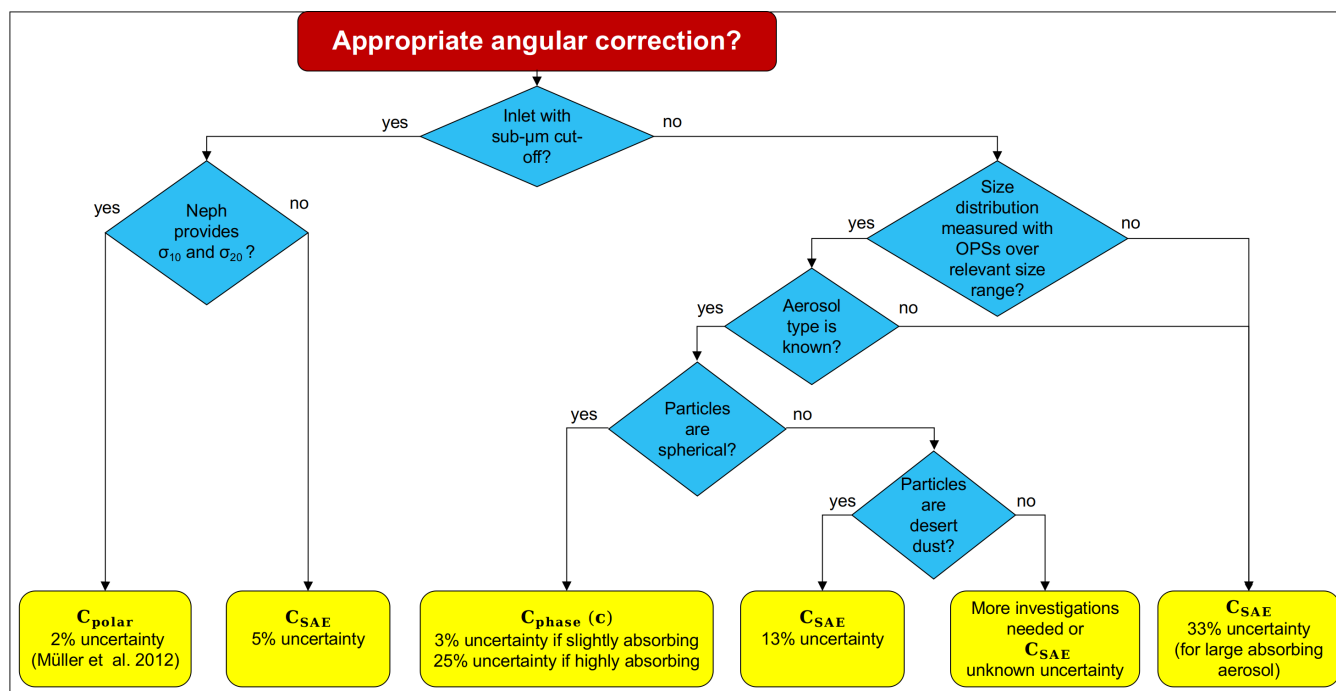


Figure 8. Flow chart to decide which angular correction is appropriate in different situations. The uncertainty related to the appropriate angular correction is identified on the basis of the results of the sensitivity study reported in Figs.6 and 7.

Data availability. Data of the laboratory study shown in this paper are available on request to bernadett.weinzierl@univie.ac.at and marilena.teri@univie.ac.at.

Author contributions. MT, ThM, and BW designed the study. MT, SV, and BW prepared the experiment. MT, SV, ThM, and HH tested the experimental set-up and performed the measurements. MT analyzed the data with support from BW, ThM, and JG. HH analyzed and provided

Horvath's polar nephelometer data. MT performed the simulated closure experiment with contribution from AW for the Mie code reproducing the TSI OPS signal and JG for the ADDA calculations. The interpretation of the results is the outcome of numerous discussions among all co-authors. MT wrote the manuscript with contributions from JG, PB, and BW. All co-authors read and commented on the manuscript.

Competing interests. The authors declare that they have no conflict of interest.

740 *Acknowledgements.* The research leading to these results has received funding from the European Research Council (ERC) under the European Union's Horizon 2020 research and innovation programme (grant agreement no. 640458, A-LIFE). We acknowledge financial support by the Vienna Doctoral School in Physics (VDSP). Erasmus+ Traineeship Programme is also acknowledged for the financial support to Sara Valentini. The authors thank Scott Prah and Maxim Yurkin for providing their optical modeling codes.

Table 7. List of symbols

Symbol	parameter
σ_s	scattering coefficient
σ_{sp}	particle scattering coefficient
σ_{sR}	Rayleigh scattering coefficient
σ_{ep}	particle extinction coefficient
σ_{ap}	particle absorption coefficient
θ	scattering angle
γ	angular scattering function
Ω	solid angle with respect to the direction of the incident beam
λ	wavelength
λ_B	blue wavelength of the Aurora 4000 polar nephelometer = 450 nm
λ_G	green wavelength of the Aurora 4000 polar nephelometer = 525 nm
λ_R	red wavelength of the Aurora 4000 polar nephelometer = 635 nm
α	shutter position in degree
ρ	particle density
d	particle diameter
n	real part of the refractive index
k	imaginary part of the refractive index
SAE	scattering Ångström exponent
SAE^*	scattering Ångström exponent calculated using the uncorrected Aurora 4000 measurement of σ_{sp}
Z^{ideal}	angular sensitivity function for an ideal nephelometer
$Z^{Aurora4000}$	angular sensitivity function of the Aurora 4000 polar nephelometer
$\theta_1, \theta_2, \beta_1, \beta_2, \delta_1, \delta_2$	parameters of the angular sensitivity function
S	signal measured by the Aurora 4000 polar nephelometer
$\sigma_{sp}^{Aurora4000, \alpha}$	particle scattering coefficient measured by the Aurora 4000 polar nephelometer for shutter position α
$OPS C_{sca}$	scattering cross section of the optical particle spectrometer
$C_{R, \alpha}$	Rayleigh angular correction for shutter position α
C_α	angular correction for shutter position α
C_{0°	angular correction for total particle scattering coefficient ($\alpha = 0^\circ$)
C_{phase}	angular correction calculated using the particle phase function
$C_{phase, OPS}$	angular correction calculated using the Mie simulated particle phase function with the OPS particle size distribution
$C_{phase, H}$	angular correction calculated using the particle phase function measured by Horvath's polar nephelometer
C_{SAE}	angular correction calculated using the SAE
C_{polar}	angular correction calculated using the polar measurements of the particle scattering coefficient
$C_{SAE, OPS}$	angular correction calculated using the Mie simulated SAE with the OPS particle size distribution
$C_{polar, OPS}$	angular correction calculated using the Mie simulated polar measurements of σ_{sp} with the OPS particle size distribution

References

- 745 Abo Riziq, A., Erlick, C., Dinar, E., and Rudich, Y.: Optical Properties of Absorbing and Non-Absorbing Aerosols Retrieved by Cavity Ring down (CRD) Spectroscopy, *Atmospheric Chemistry and Physics*, 7, 1523–1536, <https://doi.org/10.5194/acp-7-1523-2007>, 2007.
- Anderson, T., Covert, D., Marshall, S., Laucks, M., Charlson, R., Waggoner, A., Ogren, J., Caldow, R., Holm, R., Quant, F., Sem, G., Wiedensohler, A., Ahlquist, N., and Bates, T.: Performance Characteristics of a High-Sensitivity, Three-Wavelength, Total Scatter/Backscatter Nephelometer, *Journal of Atmospheric and Oceanic Technology*, 13, 967–986, [https://doi.org/10.1175/1520-750426\(1996\)013<0967:PCOAHS>2.0.CO;2](https://doi.org/10.1175/1520-750426(1996)013<0967:PCOAHS>2.0.CO;2), 1996.
- Anderson, T. L. and Ogren, J. A.: Determining Aerosol Radiative Properties Using the TSI 3563 Integrating Nephelometer, *Aerosol Science and Technology*, 29, 57–69, <https://doi.org/10.1080/02786829808965551>, 1998.
- Ansmann, A., Petzold, A., Kandler, K., Tegen, I., Wendisch, M., Müller, D., Weinzierl, B., Müller, T., and Heintzenberg, J.: Saharan Mineral Dust Experiments SAMUM–1 and SAMUM–2: What Have We Learned?, *Tellus B: Chemical and Physical Meteorology*, 63, 403–429, <https://doi.org/10.1111/j.1600-0889.2011.00555.x>, 2011.
- 755 Beuttell, R. G. and Brewer, A. W.: Instruments for the Measurement of the Visual Range, *Journal of Scientific Instruments*, 26, 357–359, <https://doi.org/10.1088/0950-7671/26/11/302>, 1949.
- Bohren, C. F. and Huffman, D. R.: Absorption and scattering of light by small particles, John Wiley & Sons, <https://doi.org/10.1002/9783527618156>, 2008.
- 760 Bond, T. C., Anderson, T. L., and Campbell, D.: Calibration and Intercomparison of Filter-Based Measurements of Visible Light Absorption by Aerosols, *Aerosol Science and Technology*, 30, 582–600, <https://doi.org/10.1080/027868299304435>, 1999.
- Bond, T. C., Covert, D. S., and Müller, T.: Truncation and Angular-Scattering Corrections for Absorbing Aerosol in the TSI 3563 Nephelometer, *Aerosol Science and Technology*, 43, 866–871, <https://doi.org/10.1080/02786820902998373>, 2009.
- Brock, C. A., Froyd, K. D., Dollner, M., Williamson, C. J., Schill, G., Murphy, D. M., Wagner, N. J., Kupc, A., Jimenez, J. L., Campuzano-Jost, P., Nault, B. A., Schroder, J. C., Day, D. A., Price, D. J., Weinzierl, B., Schwarz, J. P., Katich, J. M., Wang, S., Zeng, L., Weber, R., Dibb, J., Scheuer, E., Diskin, G. S., DiGangi, J. P., Bui, T., Dean-Day, J. M., Thompson, C. R., Peischl, J., Ryerson, T. B., Bourgeois, I., Daube, B. C., Commane, R., and Wofsy, S. C.: Ambient Aerosol Properties in the Remote Atmosphere from Global-Scale in Situ Measurements, *Atmospheric Chemistry and Physics*, 21, 15 023–15 063, <https://doi.org/10.5194/acp-21-15023-2021>, 2021.
- 765 Bucholtz, A.: Rayleigh-Scattering Calculations for the Terrestrial Atmosphere, *Applied Optics*, 34, 2765–2773, <https://doi.org/10.1364/AO.34.002765>, 1995.
- 770 Cappa, C. D., Kolesar, K. R., Zhang, X., Atkinson, D. B., Pekour, M. S., Zaveri, R. A., Zelenyuk, A., and Zhang, Q.: Understanding the Optical Properties of Ambient Sub- and Supermicron Particulate Matter: Results from the CARES 2010 Field Study in Northern California, *Atmospheric Chemistry and Physics*, 16, 6511–6535, <https://doi.org/10.5194/acp-16-6511-2016>, 2016.
- Choobari, O. A., Zawar-Reza, P., and Sturman, A.: The Global Distribution of Mineral Dust and Its Impacts on the Climate System: A Review, *Atmospheric Research*, 138, 152–165, <https://doi.org/10.1016/j.atmosres.2013.11.007>, 2014.
- Clarke, A., McNaughton, C., Kapustin, V., Shinozuka, Y., Howell, S., Dibb, J., Zhou, J., Anderson, B., Brekhovskikh, V., Turner, H., and Pinkerton, M.: Biomass Burning and Pollution Aerosol over North America: Organic Components and Their Influence on Spectral Optical Properties and Humidification Response, *Journal of Geophysical Research: Atmospheres*, 112, <https://doi.org/10.1029/2006JD007777>, 2007.

- 780 Costabile, F., Barnaba, F., Angelini, F., and Gobbi, G. P.: Identification of Key Aerosol Populations through Their Size and Composition Resolved Spectral Scattering and Absorption, *Atmospheric Chemistry and Physics*, 13, 2455–2470, <https://doi.org/10.5194/acp-13-2455-2013>, 2013.
- Devon, M. J. and Rudin, A.: A Simple Technique for Measuring the Refractive Index of Polymer Latexes at Various Wavelengths, *Journal of Applied Polymer Science*, 34, 469–476, <https://doi.org/10.1002/app.1987.070340202>, 1987.
- 785 Di Biagio, C., Formenti, P., Balkanski, Y., Caponi, L., Cazaunau, M., Pangui, E., Journet, E., Nowak, S., Andreae, M. O., Kandler, K., Saeed, T., Piketh, S., Seibert, D., Williams, E., and Doussin, J.-F.: Complex Refractive Indices and Single-Scattering Albedo of Global Dust Aerosols in the Shortwave Spectrum and Relationship to Size and Iron Content, *Atmospheric Chemistry and Physics*, 19, 15 503–15 531, <https://doi.org/10.5194/acp-19-15503-2019>, 2019.
- Gasteiger, J. and Wiegner, M.: MOPSMAP v1.0: A Versatile Tool for the Modeling of Aerosol Optical Properties, *Geoscientific Model Development*, 11, 2739–2762, <https://doi.org/10.5194/gmd-11-2739-2018>, 2018.
- 790 Gasteiger, J., Wiegner, M., Groß, S., Freudenthaler, V., Toledano, C., Tesche, M., and Kandler, K.: Modelling Lidar-Relevant Optical Properties of Complex Mineral Dust Aerosols, *Tellus B*, 63, 725–741, <https://doi.org/10.1111/j.1600-0889.2011.00559.x>, 2011.
- Heintzenberg, J. and Charlson, R. J.: Design and Applications of the Integrating Nephelometer: A Review, *Journal of Atmospheric and Oceanic Technology*, 13, 987–1000, [https://doi.org/10.1175/1520-0426\(1996\)013<0987:DAAOTI>2.0.CO;2](https://doi.org/10.1175/1520-0426(1996)013<0987:DAAOTI>2.0.CO;2), 1996.
- 795 Heintzenberg, J. and Quenzel, H.: Calculations on the Determination of the Scattering Coefficient of Turbid Air with Integrating Nephelometers, *Atmospheric Environment (1967)*, 7, 509–519, [https://doi.org/10.1016/0004-6981\(73\)90004-8](https://doi.org/10.1016/0004-6981(73)90004-8), 1973.
- Heintzenberg, J., Wiedensohler, A., Tuch, T. M., Covert, D. S., Sheridan, P., Ogren, J. A., Gras, J., Nessler, R., Kleefeld, C., Kalivitis, N., Aaltonen, V., Wilhelm, R.-T., and Havlicek, M.: Intercomparisons and Aerosol Calibrations of 12 Commercial Integrating Nephelometers of Three Manufacturers, *Journal of Atmospheric and Oceanic Technology*, 23, 902–914, <https://doi.org/10.1175/JTECH1892.1>, 2006.
- 800 Hermann, M., Weigelt, A., Assmann, D., Pfeifer, S., Müller, T., Conrath, T., Voigtländer, J., Heintzenberg, J., Wiedensohler, A., Martinsson, B. G., Deshler, T., Brenninkmeijer, C. A. M., and Zahn, A.: An Optical Particle Size Spectrometer for Aircraft-Borne Measurements in IAGOS-CARIBIC, *Atmospheric Measurement Techniques*, 9, 2179–2194, <https://doi.org/10.5194/amt-9-2179-2016>, 2016.
- Horvath, H.: A Simple Method for the Absolute Calibration of the Integrating Nephelometer, *Atmospheric Environment (1967)*, 7, 521–525, [https://doi.org/10.1016/0004-6981\(73\)90005-X](https://doi.org/10.1016/0004-6981(73)90005-X), 1973.
- 805 Horvath, H.: Extrapolation of a Truncated Aerosol Volume Scattering Function to the Far Forward and Back Region, *Journal of Aerosol Science*, 90, 26–35, <https://doi.org/10.1016/j.jaerosci.2015.08.001>, 2015.
- Horvath, H., Alados Arboledas, L., and Olmo Reyes, F. J.: Angular Scattering of the Sahara Dust Aerosol, *Atmospheric Chemistry and Physics*, 18, 17 735–17 744, <https://doi.org/10.5194/acp-18-17735-2018>, 2018.
- IPCC: Climate Change 2013: The Physical Science Basis. Contribution of Working Group I to the Fifth Assessment Report of the Intergovernmental Panel on Climate Change, Cambridge University Press, Cambridge, United Kingdom and New York, NY, USA, www.climatechange2013.org, 2013.
- 810 Kassianov, E., Barnard, J., Pekour, M., Berg, L. K., Shilling, J., Flynn, C., Mei, F., and Jefferson, A.: Simultaneous Retrieval of Effective Refractive Index and Density from Size Distribution and Light-Scattering Data: Weakly Absorbing Aerosol, *Atmospheric Measurement Techniques*, 7, 3247–3261, <https://doi.org/10.5194/amt-7-3247-2014>, 2014.
- 815 Mack, L. A., Levin, E. J. T., Kreidenweis, S. M., Obrist, D., Moosmüller, H., Lewis, K. A., Arnott, W. P., McMeeking, G. R., Sullivan, A. P., Wold, C. E., Hao, W.-M., Collett, J. L., and Malm, W. C.: Optical Closure Experiments for Biomass Smoke Aerosols, *Atmospheric Chemistry and Physics*, 10, 9017–9026, <https://doi.org/10.5194/acp-10-9017-2010>, 2010.

- Massoli, P., Murphy, D. M., Lack, D. A., Baynard, T., Brock, C. A., and Lovejoy, E. R.: Uncertainty in Light Scattering Measurements by TSI Nephelometer: Results from Laboratory Studies and Implications for Ambient Measurements, *Aerosol Science and Technology*, 43, 1064–1074, <https://doi.org/10.1080/02786820903156542>, 2009.
- Mishchenko, M. I., Laciš, A. A., Carlson, B. E., and Travis, L. D.: Nonsphericity of Dust-like Tropospheric Aerosols: Implications for Aerosol Remote Sensing and Climate Modeling, *Geophysical Research Letters*, 22, 1077–1080, <https://doi.org/10.1029/95GL00798>, 1995.
- Moosmüller, H. and Arnott, W. P.: Angular Truncation Errors in Integrating Nephelometry, *Review of Scientific Instruments*, 74, 3492–3501, <https://doi.org/10.1063/1.1581355>, 2003.
- Müller, T., Nowak, A., Wiedensohler, A., Sheridan, P., Laborde, M., Covert, D. S., Marinoni, A., Imre, K., Henzing, B., Roger, J.-C., dos Santos, S. M., Wilhelm, R., Wang, Y.-Q., and de Leeuw, G.: Angular Illumination and Truncation of Three Different Integrating Nephelometers: Implications for Empirical, Size-Based Corrections, *Aerosol Science and Technology*, 43, 581–586, <https://doi.org/10.1080/02786820902798484>, 2009.
- Müller, T., Laborde, M., Kassell, G., and Wiedensohler, A.: Design and Performance of a Three-Wavelength LED-based Total Scatter and Backscatter Integrating Nephelometer, *Atmospheric Measurement Techniques*, 4, 1291–1303, <https://doi.org/10.5194/amt-4-1291-2011>, 2011a.
- Müller, T., Schladitz, A., Kandler, K., and Wiedensohler, A.: Spectral Particle Absorption Coefficients, Single Scattering Albedos and Imaginary Parts of Refractive Indices from Ground Based in Situ Measurements at Cape Verde Island during SAMUM-2, *Tellus B: Chemical and Physical Meteorology*, 63, 573–588, <https://doi.org/10.1111/j.1600-0889.2011.00572.x>, 2011b.
- Müller, T., Paixão, M., Pfeifer, S., and Wiedensohler, A.: Scattering Coefficients and Asymmetry Parameters derived from the Polar Nephelometer Aurora4000, in: European Aerosol Conference EAC 2012, Granada. Zenodo., <https://doi.org/10.5281/zenodo.5588445>, 2012.
- Ogren, J. A.: Comment on “Calibration and Intercomparison of Filter-Based Measurements of Visible Light Absorption by Aerosols”, *Aerosol Science and Technology*, 44, 589–591, <https://doi.org/10.1080/02786826.2010.482111>, 2010.
- Ogren, J. A., Wendell, J., Andrews, E., and Sheridan, P. J.: Continuous Light Absorption Photometer for Long-Term Studies, *Atmospheric Measurement Techniques*, 10, 4805–4818, <https://doi.org/10.5194/amt-10-4805-2017>, 2017.
- Onasch, T. B., Massoli, P., Kebedian, P. L., Hills, F. B., Bacon, F. W., and Freedman, A.: Single Scattering Albedo Monitor for Airborne Particulates, *Aerosol Science and Technology*, 49, 267–279, <https://doi.org/10.1080/02786826.2015.1022248>, 2015.
- Pandolfi, M., Alados-Arboledas, L., Alastuey, A., Andrade, M., Angelov, C., Artiñano, B., Backman, J., Baltensperger, U., Bonasoni, P., Bukowiecki, N., Collaud Coen, M., Conil, S., Coz, E., Crenn, V., Dudoitis, V., Ealo, M., Eleftheriadis, K., Favez, O., Fetfatzis, P., Fiebig, M., Flentje, H., Ginot, P., Gysel, M., Henzing, B., Hoffer, A., Holubova Smejkalova, A., Kalapov, I., Kalivitis, N., Kouvarakis, G., Kristensson, A., Kulmala, M., Lihavainen, H., Lunder, C., Luoma, K., Lyamani, H., Marinoni, A., Mihalopoulos, N., Moerman, M., Nicolas, J., O’Dowd, C., Petäjä, T., Petit, J.-E., Pichon, J. M., Prokopciuk, N., Putaud, J.-P., Rodríguez, S., Sciare, J., Sellegri, K., Swietlicki, E., Titos, G., Tuch, T., Tunved, P., Ulevicius, V., Vaishya, A., Vana, M., Virkkula, A., Vratolis, S., Weingartner, E., Wiedensohler, A., and Laj, P.: A European Aerosol Phenomenology – 6: Scattering Properties of Atmospheric Aerosol Particles from 28 ACTRIS Sites, *Atmospheric Chemistry and Physics*, 18, 7877–7911, <https://doi.org/10.5194/acp-18-7877-2018>, 2018.
- Petzold, A., Veira, A., Mund, S., Esselborn, M., Kiemle, C., Weinzierl, B., Hamburger, T., Ehret, G., Lieke, K., and Kandler, K.: Mixing of Mineral Dust with Urban Pollution Aerosol over Dakar (Senegal): Impact on Dust Physico-Chemical and Radiative Properties, *Tellus B: Chemical and Physical Meteorology*, 63, 619–634, <https://doi.org/10.1111/j.1600-0889.2011.00547.x>, 2011.

- Petzold, A., Onasch, T., Keibian, P., and Freedman, A.: Intercomparison of a Cavity Attenuated Phase Shift-based Extinction Monitor (CAPS PMex) with an Integrating Nephelometer and a Filter-Based Absorption Monitor, *Atmospheric Measurement Techniques*, 6, 1141–1151, <https://doi.org/10.5194/amt-6-1141-2013>, 2013.
- Prahl, S.: Miepython, a pure Python module to calculate light scattering by non-absorbing, partially-absorbing, or perfectly conducting spheres. Mie theory is used, following the procedure described by Wiscombe., GitHub, <https://miepython.readthedocs.io>.
- Qiu, J., Tan, W., Zhao, G., Yu, Y., and Zhao, C.: New Correction Method of Scattering Coefficient Measurements of Athree-Wavelength Nephelometer, Preprint, *Aerosols/In Situ Measurement/Data Processing and Information Retrieval*, <https://doi.org/10.5194/amt-2020-412>, 2021.
- Quirantes, A., Olmo, F. J., Lyamani, H., and Alados-Arboledas, L.: Correction Factors for a Total Scatter/Backscatter Nephelometer, *Journal of Quantitative Spectroscopy and Radiative Transfer*, 109, 1496–1503, <https://doi.org/10.1016/j.jqsrt.2007.12.014>, 2008.
- R Core Team: R: A Language and Environment for Statistical Computing, R Foundation for Statistical Computing, Vienna, Austria, <https://www.R-project.org/>, 2021.
- Schladitz, A., MüLLER, T., Kaaden, N., Massling, A., Kandler, K., Ebert, M., Weinbruch, S., Deutscher, C., and Wiedensohler, A.: In Situ Measurements of Optical Properties at Tinfou (Morocco) during the Saharan Mineral Dust Experiment SAMUM 2006, *Tellus B: Chemical and Physical Meteorology*, 61, 64–78, <https://doi.org/10.1111/j.1600-0889.2008.00397.x>, 2009.
- Schladitz, A., Müller, T., Nordmann, S., Tesche, M., Groß, S., Freudenthaler, V., Gasteiger, J., and Wiedensohler, A.: In Situ Aerosol Characterization at Cape Verde, *Tellus B: Chemical and Physical Meteorology*, 63, 549–572, <https://doi.org/10.1111/j.1600-0889.2011.00568.x>, 2011.
- Sorribas, M., Olmo, F. J., Quirantes, A., Lyamani, H., Gil-Ojeda, M., Alados-Arboledas, L., and Horvath, H.: Role of Spheroidal Particles in Closure Studies for Aerosol Microphysical-Optical Properties: Spheroidal Particles in Aerosol Closure Studies, *Quarterly Journal of the Royal Meteorological Society*, 141, 2700–2707, <https://doi.org/10.1002/qj.2557>, 2015.
- Spanu, A., Dollner, M., Gasteiger, J., Bui, T. P., and Weinzierl, B.: Flow-Induced Errors in Airborne In Situ Measurements of Aerosols and Clouds, *Atmospheric Measurement Techniques*, 13, 1963–1987, <https://doi.org/10.5194/amt-13-1963-2020>, 2020.
- Steiner, G., Attoui, M., Wimmer, D., and Reischl, G. P.: A Medium Flow, High-Resolution Vienna DMA Running in Recirculating Mode, *Aerosol Science and Technology*, 44, 308–315, <https://doi.org/10.1080/02786821003636763>, 2010.
- Textor, C., Schulz, M., Guibert, S., Kinne, S., Balkanski, Y., Bauer, S., Berntsen, T., Berglen, T., Boucher, O., Chin, M., Dentener, F., Diehl, T., Easter, R., Feichter, H., Fillmore, D., Ghan, S., Ginoux, P., Gong, S., Grini, A., Hendricks, J., Horowitz, L., Huang, P., Isaksen, I., Iversen, I., Kloster, S., Koch, D., Kirkevåg, A., Kristjansson, J. E., Krol, M., Lauer, A., Lamarque, J. F., Liu, X., Montanaro, V., Myhre, G., Penner, J., Pitari, G., Reddy, S., Seland, Ø., Stier, P., Takemura, T., and Tie, X.: Analysis and Quantification of the Diversities of Aerosol Life Cycles within AeroCom, *Atmospheric Chemistry and Physics*, 6, 1777–1813, <https://doi.org/10.5194/acp-6-1777-2006>, 2006.
- Valenzuela, A., Olmo, F., Lyamani, H., Antón, M., Titos, G., Cazorla, A., and Alados-Arboledas, L.: Aerosol Scattering and Absorption Angström Exponents as Indicators of Dust and Dust-Free Days over Granada (Spain), *Atmospheric Research*, 154, 1–13, <https://doi.org/10.1016/j.atmosres.2014.10.015>, 2015.
- Vasilatou, K.: Calibration of Optical Particle Size Spectrometers against a Primary Standard: Counting Efficiency Profile of the TSI Model 3330 OPS and Grimm 11-D Monitor in the Particle Size Range from 300 Å Nm to 10 Å $\hat{I}_{\frac{1}{4}}m$ | Elsevier Enhanced Reader, <https://doi.org/10.1016/j.jaerosci.2021.105818>, 2021.
- von der Weiden, S.-L., Drewnick, F., and Borrmann, S.: Particle Loss Calculator – a New Software Tool for the Assessment of the Performance of Aerosol Inlet Systems, *Atmospheric Measurement Techniques*, 2, 479–494, <https://doi.org/10.5194/amt-2-479-2009>, 2009.

- Waldram, J. M.: Measurement of the Photometric Properties of the Upper Atmosphere, *Transactions of the Illuminating Engineering Society*, 10, 147–187, <https://doi.org/10.1177/147715354501000801>, 1945.
- 895 Weinzierl, B., Ansmann, A., Prospero, J. M., Althausen, D., Benker, N., Chouza, F., Dollner, M., Farrell, D., Fomba, W. K., Freudenthaler, V., Gasteiger, J., Groß, S., Haorig, M., Heinold, B., Kandler, K., Kristensen, T. B., Mayol-Bracero, O. L., Müller, T., Reitebuch, O., Sauer, D., Schäfler, A., Schepanski, K., Spanu, A., Tegen, I., Toledano, C., and Walser, A.: The Saharan Aerosol Long-Range Transport and Aerosol–Cloud-Interaction Experiment: Overview and Selected Highlights, *Bulletin of the American Meteorological Society*, 98, 1427–1451, <https://doi.org/10.1175/BAMS-D-15-00142.1>, 2017.
- Wiscombe, W. J.: Improved Mie Scattering Algorithms, *Applied Optics*, 19, 1505–1509, <https://doi.org/10.1364/AO.19.001505>, 1980.
- 900 Yurkin, M. A. and Hoekstra, A. G.: The Discrete-Dipole-Approximation Code ADDA: Capabilities and Known Limitations, *Journal of Quantitative Spectroscopy and Radiative Transfer*, 112, 2234–2247, <https://doi.org/10.1016/j.jqsrt.2011.01.031>, 2011.