

Review of 'Quantification of major particulate matter species from a single filter type using infrared spectroscopy – Application to a large-scale monitoring network' by Debus et al:

Reviewer comments are in black, responses are in green and edits to the paper are in blue.

Reviewer #2

The work by Debus et al. presents a methodology for analysing the aerosol composition using FT-IR analysis of PTFE samples, along with proof-of-concept measurements on samples collected on the USA IMPROVE network. As indicated by the authors, this approach offers a number of advantages over more traditional reference methods for analysing organic and inorganic aerosol composition, being faster and cheaper, making it attractive for large scale monitoring networks.

In my opinion, the authors have done a very good job describing the methodology, from the FT-IR analyses to statistical models used for calibration and prediction, and I was able to follow it even as someone who is non-expert in FT-IR. The reported results demonstrate that the FT-IR was able to predict total mass, organic (OC), elemental (EC) and total (TC) carbon, sulphate, and crustal elements (Si, Al, Ca, Ti, Fe) concentrations with a similar error to reference method. The exception was nitrate which demonstrated higher error, likely due to evaporation from the filter.

Thank you for your comments. We are pleased to hear that the paper was readable by a non-expert.

My one main comment is I would have liked to have seen more data on how the predicted composition by FT-IR compared to the reference data. My understanding is that 21 sites were used to build the statistical model required to extract the compositional data, and this was then applied to the remaining sites. Fig 4 is the main figure demonstrating how the predicted levels by FT-IR compared to reference for key species but appears to be for all samples and sites in 2015. What I was hoping to see (but may have missed) was similar data/figures demonstrating how the FT-IR predicted composition for individual sites, especially those sites not used to build the multilevel calibration model. This would help I think demonstrate that this method could be applied independently.

Thank you so much for this perspective and comment. We have prepared maps of prediction metrics and reference method concentrations for all predicted species and added a plot (new Figure 5 – included below) in the paper with a few of the metrics for OC, EC, Si and sulfate. We added maps of the reference method concentrations, FTIR concentrations, and all prediction metrics for all measured constituents in the supplemental material (new section S10 – not included in this response to reviewers but is in the revised supplemental material). We added text throughout section 3.3 to interpret the maps.

The following is the added text. Each paragraph is at the end of the section on the give type of constituents. Following the added text is the new figure 5 referred to in the text.

Annual median maps of FT-IR OC and TOR OC as well as maps of FT-IR EC and TOR EC (Supplemental material S10) are nearly identical. As shown in Figure 5, annual median OC and EC concentrations are highest at the four urban IMPROVE sites of Seattle, WA, Fresno, CA, Phoenix, AZ and Birmingham, AL than the rural sites and are higher in the east than in the west. For OC, the relative error is lower than the TOR relative error in the east (where concentrations are higher) and higher than TOR relative error in the west. OC has an equal or lower number of samples below MDL than TOR at all sites. For EC, FTIR relative error is higher than TOR relative error at almost all sites. The percentage of samples of EC that are below MDL for FTIR is similar to are slightly higher than TOR in the eastern US where EC concentrations are higher and are significantly higher than TOR in the western US where concentrations are lower. These patterns indicate that FTIR does not add error to OC measurements when concentrations are above  $0.75 \mu\text{g}/\text{m}^3$  but does add some error at lower OC concentrations and for EC measurements.

Figure 5 shows the distribution of concentrations of XRF Si across CONUS. The highest annual median concentrations are in the southwest. Similar patterns are found for Al, Ca, Ti and Fe except that high Fe concentrations are also observed at the urban sites, particularly Fresno, CA and Birmingham, AL (Figures S10-6 through S10-9). For Si, FTIR normalized error is lower than XRF in the west where concentrations are higher. For Ca, Ti and Al, FT-IR normalized error is lower only in the southwest. For Fe, FT-IR is above XRF normalized error. The percentage of samples below MDL are similar to XRF (0-10% different) in the southwest and central US and modestly higher (15-20%) in the northwest and eastern US for Si. For Fe, the spatial pattern is similar but the FTIR % below MDL is up to 50 % higher than XRF. However, for Al, Ca, and Ti, FTIR percent below MDL is approximately the same or lower than XRF at all sites.

The annual median sulfate concentration by IC is shown in Figure 5. Annual median concentrations are highest in the southeast and eastern US with a gradient in concentrations observed across the midwest. The median relative error for sulfate by IC is only 2% and all sulfate by FTIR all have higher relative error than 2%. However, in the eastern US sulfate relative error is less than 15% but in the west, it is considerably higher, peaking in Wyoming where concentrations are very low. The % below MDL is very similar for FTIR and IC across the continent. Due to volatility of nitrate, the nitrate metrics for FTIR are not as good as those for sulfate (Figure S10-11).

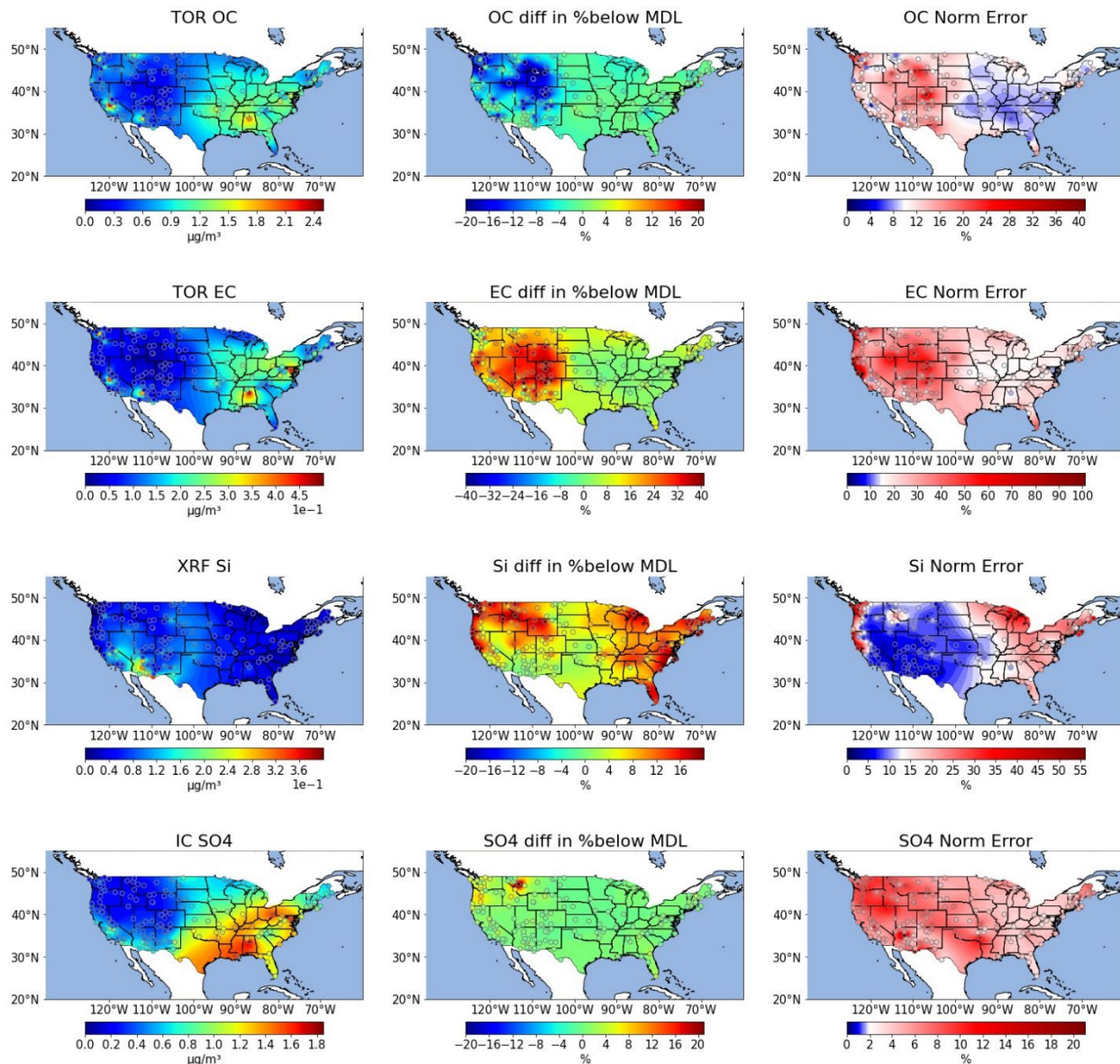


Figure 5. Annual median reference method concentrations (left), difference in % below MDL (middle) and normalized relative error (right) per site for OC, EC, silicon, and sulfate for CONUS for 2015. For the MDL plot, sites in green and blue indicate that the FTIR has the same or fewer samples below MDL than the reference method. Sites in yellow and red have more samples below MDL for FTIR than for the reference method. For the relative error maps, the median relative error of the reference method estimated using methods described in Table 1 is white. For sites in blue, FTIR has lower relative error than the reference method and sites in red are higher.

Overall, this paper is well written, clearly presented and would be of interest to many in the community.

Thank you for your positive and encouraging comments.

#### Minor comments

1. Line 337: Why was 2015 chosen for developing the model, when datasets from later years were available? Would using samples from later help with losses of semi-volatile species?

All samples were analyzed as soon as possible after being collected so the semi-volatile losses are roughly the same across all years.

2. Figure 1: Is the composition data presented here measured by FT-IR or the reference methods?

The data in this plot is from routine IMPROVE measurements. We have revised a sentence in the figure caption and the first sentence that introduces this figure as follows to clarify this point.

(caption) The composition is obtained from routine IMPROVE (non-FT-IR) measurements and the IMPROVE reconstructed fine mass equation (<http://vista.cira.colostate.edu/Improve/reconstructed-fine-mass/>).

(text) Figure 1 shows the spatial distribution and annual average composition (from routine IMPROVE data) of the 21 sites selected for the Limited Sites model.

3. Section 3.3.1: As there was good predictive capability for FT-IR for organic carbon, do the authors think that additional information on the organic aerosol could be extracted with FT-IR, perhaps related to the functional groups present?

Thank you for raising this point. Yes, we do think that functional group information can be extracted from FT-IR spectra and we have published on this point. We briefly discuss functional groups in the 4<sup>th</sup> paragraph of the introduction. To further this point, we have the below sentence to the end of the paper.

As shown in our previous work, additional data, including an estimate of organic matter and its functional group composition, can also be obtained from FT-IR spectra of PTFE filters, further increasing the utility of infrared spectroscopy of aerosol samples.