

The Surface Longwave Cloud Radiative Effect derived from Space Lidar Observations

Assia Arouf¹, Hélène Chepfer¹, Thibault Vaillant de Guélis^{2,3}, Marjolaine Chiriaco⁴, Matthew D. Shupe^{5,6}, Rodrigo Guzman¹, Artem Feofilov¹, Patrick Raberanto⁷, Tristan S. L'Ecuyer⁸, Seiji Kato³, and Michael R. Gallagher^{5,6}

¹LMD/IPSL, Sorbonne Université, École Polytechnique, Institut Polytechnique de Paris, ENS, PSL Université, CNRS, Palaiseau France

²Science Systems and Applications, Inc., Hampton, Virginia, USA

³NASA Langley Research Center, Hampton, Virginia, USA

⁴LATMOS/IPSL, UVSQ, Université Paris-Saclay, Sorbonne Université, CNRS, 78280, Guyancourt, France

⁵Cooperative Institute for Research in Environmental Sciences, University of Colorado, Boulder, Colorado, USA

⁶NOAA Physical Sciences Laboratory, Boulder, Colorado, USA

⁷LMD/IPSL, CNRS, Sorbonne Université, École Polytechnique, Institut Polytechnique de Paris, ENS, PSL Université, Palaiseau France

⁸Department of Atmospheric and Oceanic Sciences, University of Wisconsin-Madison, USA

Correspondence to: Assia Arouf (assia.arouf@lmd.ipsl.fr)

Abstract. Clouds warm the surface in the longwave (LW) and this warming effect can be quantified through the surface LW cloud radiative effect (CRE). The global surface LW CRE has been estimated over more than two decades using space-based radiometers (2000–2021) and over the 5–year period ending in 2011 using the combination of radar, lidar and space-based radiometer. Previous work comparing these two types of retrievals have shown that the radiometer-based cloud amount has some bias over icy surfaces. Here we propose new estimates of the global surface LW CRE from space-based lidar observations over the 2008–2020 time period. We show from 1D atmospheric column radiative transfer calculations, that surface LW CRE linearly decreases with increasing cloud altitude. These computations allow us to establish simple parameterizations between surface LW CRE, and five cloud properties that are well observed by the CALIPSO space-based lidar: opaque cloud cover and altitude, and thin cloud cover, altitude, and emissivity. We evaluate this new surface LW CRE product by comparing it to existing satellite-derived products globally on instantaneous collocated data at footprint scale and on global averages, as well as to ground-based observations at specific locations. Our estimate appears to be an improvement over others as it appropriately captures the annual variability of the surface LW CRE over bright polar surfaces and it provides a dataset more than 13 years long.

1 Introduction

Small changes in the surface irradiance may lead to large climatological responses (Chylek et al., 2007; Kwok and Untersteiner, 2011). Therefore, quantifying irradiance at the Earth's surface is a useful step to better understand the climate system. Clouds exert a very important effect on the energy balance at the surface of the Earth through their effects on shortwave (SW) and longwave (LW) radiation. They radiatively warm the surface in the LW domain because they absorb upward LW radiation that would otherwise escape the Earth system and reemit it back towards the surface. They cool the surface in the SW domain because they reflect solar radiation back to space that would otherwise partly be absorbed by the surface. These effects are usually quantified using the surface cloud radiative effect (CRE), defined as the change in the SW and LW radiation reaching the surface induced by the presence of clouds. Globally, clouds radiatively cool the Earth's surface by 20 W m^{-2} according to Kato et al. (2018) and by 25 W m^{-2} according to L'Ecuyer et al. (2019), where the (negative) surface SW CRE cooling is two times larger in magnitude than the (positive) surface LW CRE warming. Nevertheless, in some specific regions, like at high latitudes or over the tropical ocean below persistent stratocumulus clouds, the surface LW CRE warming can be larger than the surface SW CRE cooling, so that the clouds exert a net radiative warming of the surface.

As an example, SW effects vanish in the winter-hemisphere polar regions, leading to positive net CRE as LW effects dominate (Henderson et al., 2013). While climate warming in the Arctic is already visible with the sea ice melting (Stroeve et al., 2011), previous works showed that clouds may exert some control on future Arctic climate trajectories (Kay et al., 2016) because they play a primary role in regulating the surface energy balance (Ramanathan et al., 1989; Curry et al., 1996, Shupe and Intrieri, 2004) which influences the surface melting (van den Broeke et al., 2009). Specifically, over Greenland, van Tricht et al. (2016) showed that clouds increase the radiative fluxes into the surface and could therefore modulate the Greenland ice sheet mass balance (van Tricht et al., 2016; Hofer et al., 2017), which is a large contributor to global sea-level rise (Shepherd et al., 2012; IPCC, 2021). In the Southern high latitudes, clouds likely exert an important role on the surface energy budget of Antarctica (Shepherd et al., 2012; Kopp et al., 2016), but their radiative impact in this region remains largely unexplored (Scott et al., 2017), in spite of the fact that Antarctica contains the largest reservoir of ice on Earth. King et al. (2015) showed large errors in Antarctic surface energy budget and surface melting rates in models and underlined the importance of improving observations of cloud radiative properties in this region.

Acquaotta et al. (2014) underlined the current urgent need to develop long term reliable and high-quality climatic time series, in order to better understand, detect, predict and react to global climate variability and change. Given the importance of the surface LW CRE and the need for multiyear-time series, it is necessary to get reliable estimates of the surface LW CRE over multiple years, everywhere around the globe including over continents and ice-covered regions. The main motivation for the current work is to derive a 13 year-time series of the global surface LW CRE that can be used to better understand the cloud property that have driven the evolution of the surface LW CRE during the last decade (Vaillant de Guélis et al., 2017b, Norris et al., 2016). This is a necessary step towards understanding how clouds might interact with the surface in the future

65 as the climate warms (Lindzen and Choi, 2021). A possible way to observe cloud variability is to combine space radar and
space lidar observations (Henderson et al., 2013), because passive sensors often struggle to distinguish clouds from the
surface over continents and ice-covered regions. The launch of Cloud-Aerosol Lidar and Infrared Pathfinder Satellite
Observations (CALIPSO; Winker et al., 2010) and CloudSat Profiling Radar (CPR; Stephens et al., 2008) in 2006 provided
70 the first opportunity to incorporate information about the global vertical cloud distribution (Henderson et al., 2013) over all
surface types, and is an important parameter for surface LW CRE estimates from space. As CloudSat experienced a battery
anomaly that limited future observations to daytime scenes only in 2011, CALIPSO's global observations collected since
2006 are the main tool to provide information on the cloud vertical distribution over more than a decade. Therefore, we
retrieve the surface LW CRE from space lidar alone over 13 years.

Section 2 presents the satellite and ground-based data used in this study. In section 3, we present the method followed to
75 retrieve the surface LW CRE from radiative transfer computations. In section 4, we present the radiative-transfer-based
statistical regressions tying the surface LW CRE to cloud altitude and emissivity. In section 5, we present the new surface
LW CRE retrieved from the analytical relationships and CALIPSO space-based lidar observations (cloud cover, cloud
altitude, and cloud opacity). In section 6, we evaluate this new surface LW CRE product against ground-based observations.
In section 7 we evaluate it at footprint scale and at $2^\circ \times 2^\circ$ gridded scale against existing independent surface LW CRE
80 satellite-derived products.. In section 8, we discuss the limit of the new surface LW CRE product. Section 9 summarizes the
main results and perspectives of this work.

2 Data

This section describes the CALIPSO cloud observations used to retrieve the surface LW CRE and the independent space-based and ground-based datasets used to evaluate it.

2.1 Cloud observations from CALIPSO–GOCCP

We use cloud properties from the GCM Oriented CALIPSO Cloud Product (GOCCP v3.1.2; Chepfer et al., 2010; Cesana et al., 2012; Guzman et al., 2017) over the period 2008–2020. We do not use data collected between 2006 and 2007 because the laser tilted off nadir in November 2007, which introduced some change in the CALIPSO signal. In this product (hereafter, CALIPSO–GOCCP), lidar profiles are classified into three types: clear sky profile when no cloud is detected, thin cloud profile when one or several cloud layers and a surface echo are detected, and opaque cloud profile when one or several cloud layers are detected but no surface echo is detected. Surface echo is not detected typically when the profile contains a cloud with visible optical depth > 3 – 5 depending on the cloud microphysical properties. The cloud base height corresponds to the lowest cloud layer detected. From this classification, five fundamental cloud properties for CRE studies are derived:

- C_{Opaque} : the opaque cloud cover, i.e. the number of opaque cloud profiles divided by the total number of profiles within a $2^\circ \times 2^\circ$ latitude longitude grid box.
- $Z_{T_{Opaque}}$: the altitude of opaque cloud, i.e. the average between the altitude of the highest cloud layer in the profile (Z_{Top}) and the altitude of the layer where the lidar beam is fully attenuated (Z_{FA}) is computed for each profile, a schematic illustrating these altitudes is presented in Fig. 1. Then the gridded $Z_{T_{Opaque}}$ is the average value of all the $Z_{T_{Opaque}}$ profiles within a grid box.
- C_{Thin} : the thin cloud cover, i.e. the number of thin cloud profiles divided by the total number of profiles within a grid box.
- $Z_{T_{Thin}}$: the altitude of thin cloud, i.e. the average between the altitude of the highest cloud layer in the profile (Z_{Top}) and the altitude of the lowest cloud layer (Z_{Base}) is computed for each profile, a schematic illustrating these altitudes is presented in Fig. 1. Then the gridded $Z_{T_{Thin}}$ is the average value of all the $Z_{T_{Thin}}$ profiles within a grid box.
- ϵ_{Thin} : the thin cloud emissivity, derived from the space lidar retrieval of the thin cloud visible optical depth τ_{Thin}^{VIS} from which we estimate the thin cloud LW optical depth τ_{Thin}^{LW} , which is approximately half of τ_{Thin}^{VIS} (Garnier et al., 2015). The relationship $\epsilon_{Thin} = 1 - e^{-\tau_{Thin}^{LW}}$ (eg. Vaillant de Guélis et al., 2017a) is computed for each profile and then averaged over all the values within a grid box.

110 Figure 1 presents the altitudes of interest of an opaque cloud and a thin cloud seen from a downward space-based lidar beam and from an upward ground-based lidar beam. A thin cloud (Fig. 1 left) is characterized by three altitudes: Z_{Top} , Z_{Base} and Z_{Thin} , which is the average value of the previous two. For an ideal case, these three altitudes are the same when observed from a space-based lidar or a ground-based lidar.

115 An opaque cloud (Fig. 1 right) is characterized by three altitudes. When the lidar is based on the ground, we measure the altitude of the lowest cloud layer (Z_{Base}), the altitude where the lidar beam is fully attenuated (Z_{FA-G}), and $Z_{T_{Opaque-G}}$ which is the average of the two. When the lidar is onboard a satellite, we measure the highest cloud layer (Z_{Top}), the altitude where the lidar beam is fully attenuated (Z_{FA}), and the average of the two ($Z_{T_{Opaque}}$).

Figure 2 illustrates the mean $2^\circ \times 2^\circ$ latitude-longitude gridded values of these five variables over the period 2008–2020. At global scale, opaque clouds are more numerous (42%; Fig. 2a) than thin clouds (25%; Fig. 2b) in the GOCCP v3.1.2. Note that these numbers are different from GOCCP v3.1.1 (35% and 36% respectively) where the threshold used to detect surface echo, which influences the identification of opaque clouds, was lower because GOCCP v3.1.1 (Guzman et al., 2017) was applied only to nighttime data since noise is lower during nighttime than daytime. The GOCCP v3.1.2 is applied to nighttime and daytime observations. As expected, the multiyear, annual mean opaque and thin cloud altitudes (Fig 2c, 2d) reach maxima (> 9 km) in the presence of deep convective clouds over the warm pool and over tropical continents, and minima (< 3 km) in subsidence regions such as over stratocumulus along the West coast of continents. The thin cloud emissivity (Fig. 2e) is larger along the ITCZ, the continental regions and around the Antarctica peninsula.

2.2 Surface LW CRE from satellites

In this subsection, we describe the already existing global surface LW CRE datasets derived from satellite measurements, against which we will evaluate our satellite new product.

130 2.2.1 CERES –CCCM

CERES–CCCM. This product combines Earth’s Radiant Energy System (CERES) radiometer observations of top of the atmosphere (TOA) LW fluxes with observations from CloudSat, CALIPSO and MODIS, as well as radiative transfer calculations, to retrieve the surface LW fluxes in all sky and clear sky scenes at a resolution of the CERES Single Scanner Footprint (SSF, 20 km diameter). This product contains the surface LW CRE at CERES SSF footprint and is part of the CALIPSO, CloudSat, CERES, and MODIS Merged Product (CCCM or C3M Kato et al., 2010). This product stops in 2011 because of the CloudSat battery anomaly. This product (Version RelB1) contains the Clouds Earth’s Radiant Energy System (CERES) footprints that include ground- track of CALIPSO and CloudSat. TOA LW fluxes are derived from CERES radiance observations using Edition 2 Aqua angular distribution model. (Loeb et al. 2005, 2007). Surface LW fluxes are

140 computed using cloud properties derived from CALIPSO, CloudSat, and MODIS. CALIOP derived cloud products are
extracted from version 3 CALIPSO VFM, 0.5kmALay, and 0.5kmCLay, and 0.5kmCPro, products (Vaughan et al. 2018)
and R-04 CloudSat CLDCLASS, (Sassen and Wang 2008) and CWC-RO (Austin et al. 2009) products. MODIS cloud
properties are derived by the CERES MODIS cloud algorithm described in Minnis et al. (2010). Cloud boundaries derived
from CALIOP at a 1/3 km resolution and cloud boundaries derived from CPR CloudSat are merged to form cloud vertical
145 profiles by the method described in Kato et al. (2011). These cloud profiles are further merged into CERES footprints, the
size of which is approximately 20 km. Temperature and humidity profiles used in flux computations are from the Goddard
Earth Observing System Data Assimilation System reanalysis (GEOS, Rienecker et al. 2008). GEOS-4 is used from July
2006 through October 2007 and GEOS-5.2 is used from November 2007. Further description of the RelB1 CERES-CCCM
product is given in Ham et al. (2017) and Kato et al. (2019).

2.2.2 2BFLX

150 The 2B-FLXHR-LIDAR P1_R04 (hereafter, 2BFLX) product is derived from combined measurements of CloudSat,
CALIPSO, and the MODIS radiometer (L'Ecuyer et al., 2008; Henderson et al., 2013). It takes advantage of inferred vertical
profiles of cloud properties to compute surface irradiances using a broadband radiative transfer model. The dataset currently
stops in 2011 when CloudSat experienced its battery anomaly. This product as well as the CALIPSO-GOCCP product are
sensitive to retrieval errors and biases introduced by the limited spatial and temporal characteristics of CloudSat and
155 CALIPSO. Surface fluxes derived from a combination of radar and lidar observations in 2BFLX are also less susceptible to
uncertainties due to undetected multi-layered clouds and uncertainties in cloud base height than those derived primarily from
passive observations (L'Ecuyer et al., 2019; Hang et al., 2019). 2BFLX surface LW CRE product (L'Ecuyer et al., 2019) is
available at gridded scale as well as on instantaneous orbit file data at a resolution of the CloudSat footprint (5 km diameter).

2.3 Surface LW CRE from ground-based sites

160 As the retrieval of the surface CRE from space observations is not direct, we will evaluate the surface LW CRE retrieved
from space against that derived from surface radiation measurements collected directly at ground-based sites. For this
purpose, we selected three sites located in different regions.

The first site is located in the Arctic, where constraining radiative transfer is challenging with the limited cloud, available
atmospheric temperature and humidity profile observations (Kay et al., 2015), and where the surface CRE may influence the
165 Greenland ice-cap melt (van Trich et al., 2016; Hofer et al., 2017; Shupe et al., 2013). This Summit station (Shupe et al.,
2013; Gallagher et al., 2018) is located at the top of the Greenland ice cap (72.6° N–38.5° W) with an elevation of 3250 m.
Summit is unique because it is the only place where we have enough observations to make a robust assessment of the surface
CRE over Greenland (Lacour et al., 2018). Here, the clear sky flux is computed using a radiative transfer algorithm with

measurements of temperature and humidity profiles (e.g., REFs), while the all sky flux is measured directly using a pair of
170 upward- and downward-looking broadband pyrgeometers (e.g., Shupe and Intrieri, 2004; Intrieri et al., 2002).
The second site is located in continental mid-latitudes. This Site Instrumental de Recherche par Télédétection
Atmosphérique (SIRTA, Haeffelin et al., 2005; Chiriaco et al., 2018) is located in France (48.7° N–2.2° E) with an elevation
of 156 m. The data are part of the Baseline Surface Radiation Network (BSRN; Ohmura et al., 1998; Driemel et al., 2018).
At SIRTA, the clear sky flux is a parameterization made from the surface humidity, the integrated moisture content over the
175 atmospheric column and the air temperature at 2 m. The details are given in Dupont et al. (2008) and this product has also
been used in Rojas et al. (2021). The resulting clear sky uncertainty is approximately $\pm 5 \text{ W m}^{-2}$.
The third site is located in the tropical belt where clouds influence the global climate and heat transport (Loeb et al., 2016),
and where extensive deep convective clouds reach the cold tropical tropopause. Here, the surface LW CRE is small since
much of the surface downward LW radiation originates from emission by the moist near-surface layers of the atmosphere
180 (Prata, 1996). This Kwajalein station (KWA, Roesch et al., 2011), which is also part of BSRN, is located in the Northern
Pacific Ocean (8.72° N–167.73° E) with an elevation of 10 m.
Over the 3 ground-based sites, the radiative flux measurements at the surface are carried out using two Kipp and Zonen
CM22 pyrgeometers, which measure in the spectral range of 4.5–40 μm .

185 3 Method

3.1 Approach

Vaillant de Gu  lis et al. (2017a; 2017b) retrieved the TOA LW CRE from the five CALIPSO–GOCCP cloud properties presented in Fig. 2: the opaque cloud cover, the opaque cloud altitude, the thin cloud cover, the thin cloud altitude, and thin cloud emissivity. In adapting their approach to the surface instead of the TOA, we developed a method to retrieve the surface
190 LW CRE from the same five CALIPSO–GOCCP cloud properties. The method we have developed is based on simple parameterization. This will allow us to, in future work, more easily decompose the temporal variations of the surface LW CRE into several components in order to identify which cloud variables have driven the variations of the surface LW CRE during the last 13 years. The following physical differences exist between the surface and the TOA:

3.1.1 Moisture

195 Moisture within the boundary layer influences the surface LW CRE more than the TOA LW CRE. To take moisture effects into account, we add the surface elevation in the framework of Vaillant de Gu  lis et al. (2017) and we consider different humidity and temperature profiles at a monthly resolution and for every 2   latitude, differentiating oceans from continents. Compared to the fluxes themselves, small water vapor variability does not affect CRE much, as the equivalent clear sky contribution is removed from CRE. The surface LW CRE dependence on temperature and humidity profiles is shown in
200 Sect. 4.1, 4.2, and 4.3. The impact on the results of using monthly mean humidity and temperature profiles will be discussed in Section 8.

3.1.2 Cloud heights used for the surface LW CRE estimate

In thin cloud situations, the surface LW CRE is influenced by radiation emitted downwards by all cloud layers between the cloud base (Z_{Base}) and the cloud top (Z_{Top}). Therefore, the surface LW CRE depends on the vertical distribution of
205 condensed water between Z_{Base} and Z_{Top} which are measured by the lidar. Therefore, we use the average of both ($Z_{T_{Thin}}$) to estimate the surface LW CRE from lidar observations

In opaque cloud situation, the surface LW CRE is influenced by radiation emitted by all cloud layers between cloud base (Z_{Base}) and the altitude Z_{Emisv1} , defined as the altitude where the emissivity between Z_{Base} and Z_{Emisv1} is equal to one.
210 Cloud layers at altitudes higher than Z_{Emisv1} do not contribute to the surface LW CRE. Therefore, the surface LW CRE depends on the vertical distribution of condensed water between Z_{Base} and Z_{Emisv1} .

In those specific cases where the vertical distribution of condensed water is such that Z_{Base} equals Z_{Emisv1} , meaning that the Z_{Base} layer (480m thick) contains enough condensed water to alone make the emissivity close to 1, then the surface LW CRE is driven only by Z_{Base} . In that specific case, the lidar Z_{FA} should be used to compute the surface LW CRE, and the
 215 larger the difference between, Z_{FA} and the actual Z_{Base} , the more the space base lidar surface LW CRE will be underestimated.

In all other opaque cloud situations, where Z_{Base} is lower than Z_{Emisv1} , all cloud layers between Z_{Base} and Z_{Emisv1} contribute to the CRE, and the relative weight of each layer depends on the detailed vertical distribution of condensed water between Z_{Base} and Z_{Emisv1} . In that case, the lidar measures Z_{Top} and Z_{FA} , and we use the average $Z_{T_{Opaque}}$, which is the
 220 average of Z_{Top} and Z_{FA} to estimate the surface LW CRE from lidar observations.

To retrieve the surface LW CRE, we could use Z_{Base} from CloudSat, but this would limit our time series to 2011 only instead of 2021, and CloudSat is not always optimal to detect cloud base in particular if it is a liquid-water cloud. We chose to use what we have access to with CALIPSO: A first option consists in using Z_{FA} , the lowest opaque cloud altitude
 225 observable by space lidar ($Z_{FA} < 3$ km above the surface most of the time, Guzman et al., 2017), which is close to the actual cloud base height except in deep convective towers and some frontal mid-latitude clouds. A second option is to use $Z_{T_{Opaque}}$, which might represent the altitude of emission of the cloud in some cases. This second option will overestimate the mean altitude of the deep convective towers, where the downward space-based lidar beam attenuates quickly without seeing much of the cloud bottom. The bias will be larger when the cloud base temperature is far from that of Z_{FA} . Moreover, this bias will
 230 depend on the opacity of the part of the cloud lying under Z_{FA} that is not observable by space lidar.

Hereafter we describe the method with $Z_{T_{Opaque}}$. Afterwards, we show the results for both option 1 (Z_{FA}) and option 2 ($Z_{T_{Opaque}}$). □□

The impact of the results on using these cloud heights will be discussed in Section 7 and 8.

235 3.2 Definition of the radiative quantities

In order to get simple notation, and because we are only interested in the CRE at the surface in the LW domain in this study, the surface LW CRE will be simply noted CRE in the following equations.

To infer CRE , the net LW radiative fluxes over all type of scenes (F_{Allsky}^{net}) may be compared with corresponding fluxes where the influence of clouds has been removed ($F_{Cloudy-freesky}^{net}$). Then, we define the surface LW CRE as follows:

$$240 \quad CRE = F_{Allsky}^{net} - F_{Cloudy-freesky}^{net} \quad (1)$$

Using downwelling (\downarrow) and upwelling (\uparrow) fluxes, the surface LW CRE is expressed as follow:

$$CRE = (F_{Allsky}^{\downarrow} - F_{Allsky}^{\uparrow}) - (F_{Cloudy-freesky}^{\downarrow} - F_{Cloudy-freesky}^{\uparrow}) \quad (2)$$

Rearranging the terms on the right-hand side of this equation, we get:

$$CRE = (F_{Allsky}^{\downarrow} - F_{Cloudy-freesky}^{\downarrow}) - (F_{Allsky}^{\uparrow} - F_{Cloudy-freesky}^{\uparrow}) \quad (3)$$

245 Which can also be expressed as:

$$CRE = CRE^{\downarrow} - CRE^{\uparrow} \quad (4)$$

Where CRE^{\downarrow} represents the surface CRE on the LW downward fluxes and CRE^{\uparrow} the surface CRE on the LW upward fluxes. CRE^{\uparrow} does not exceed 1 W m^{-2} in annual global average (Allan, 2011) and in the radiative transfer computations. Therefore, the error in the surface properties play a minor role.

250 Nevertheless, in the LW domain, clouds can warm the surface, changing the surface temperature, which is then related to the upwelling LW radiation. This is a subtle but important issue and is dependent to some degree on the surface type (i.e., land surface will warm more than ocean). If CRE is determined in a hypothetical way, one could assume that the surface temperature is the same. However, this does not capture the full impact of the clouds. To understand the full impact of the clouds, one would need to consider the adjustments of all other parameters, most importantly the surface temperature. In this study we assume that the surface temperature is the same under clouds and clear skies, consistently with the definition used in previous satellite-derived products (e.g., Kato et al., 2018; L'Ecuyer et al., 2019).

3.3 Radiative transfer simulations

We use a radiative transfer code to compute the surface LW CRE due to an opaque cloud (CRE_{Opaque}) or an optically thin cloud (CRE_{Thin}) in an atmospheric column fully overcast by that cloud. In these 1D atmospheric columns, molecules and clouds are evenly distributed within each layer and each layer is considered infinite and homogeneous. For a single column fully overcast by an opaque cloud, we derived a parameterization between CRE_{Opaque} and the opaque cloud altitude $Z_{T_{Opaque}}$ (see Sect. 2.1). For the single column fully overcast by a thin cloud, we derived a parameterization between CRE_{Thin} , the thin cloud altitude $Z_{T_{Thin}}$ (see Sect. 2.1) and the thin cloud emissivity ϵ_{Thin} , as in Vaillant de Guélis et al. (2017)

265 The radiative transfer simulations are performed with GAME (Dubuisson et al., 2004). This radiative transfer code computes LW fluxes at 50 different levels with a vertical resolution of 1 km in the 25 first levels. The fluxes are spectrally integrated

between 5 and 200 μm consistently with CERES measurements. We prescribe various surface temperatures and the atmospheric profiles of humidity, temperature, ozone and pressure based on ERA Interim reanalysis (Dee et al., 2011) over oceans and lands for each month and latitude. Humidity and temperature profiles over land for January are presented in figure A2 in Appendix A. Figure A3 presents the seasonal and latitudinal behavior of the first layer of the humidity and temperature profiles (from the surface to 1 km above the surface) over ocean and over land. We perform all sky fluxes through radiative transfer computations for numerous combinations of cloud opacity and vertical distribution. We prescribe the vertical extent of each cloud, the effective size of cloud particles and the infrared optical thickness. For a column fully overcast by an opaque cloud, the cloud is represented by a 1 km thick cloud layer with an emissivity equal to 1 at Z_{FA-G} (Z_{Top}) above optically uniform cloud layers for different vertical extents with vertically integrated emissivity equal to 0.8. For a column fully overcast by a thin cloud, the cloud is represented by optically uniform cloud layers with vertically integrated emissivities equal to 0.1, 0.3, 0.5, or 0.7. The cloud top altitude varies according to latitude and can reach 17 km in tropical regions and only 11 km in polar regions. For instance, the cloud top altitude at a latitude of 39° N takes 11 different values ranging between 2 km and 13 km, and for each cloud top value, the cloud base altitude takes all possible values between 1 km above the surface and the cloud top altitude minus 1 km. Clear sky fluxes are defined by recalculating fluxes after removing clouds with the same humidity and temperature profiles.

3.4 Retrieval of surface LW cloud radiative effect from CALIPSO observations and radiative transfer simulations

The surface LW CRE is retrieved from parameterizations derived from radiative transfer simulations that involves five observed CALIPSO–GOCCP cloud properties. Two surface LW CRE datasets are built from CALIPSO–GOCCP observations using this theoretical relationship over the 2008–2020 period. An orbit dataset at the CALIOP footprint resolution of instantaneous cloud property observations and a $2^\circ \times 2^\circ$ gridded dataset of mean cloud properties. For the orbit data set, each lidar profile contains either an opaque or thin cloud or no cloud, and the surface LW CRE for this last category is zero. For the gridded product, at each grid point, the opaque surface LW CRE is computed from the gridded $Z_{T_{Opaque}}$ and weighted by the gridded opaque cloud cover C_{Opaque} in the same way as Vaillant-de-Guélis et al. (2017). The thin surface LW CRE is computed from the gridded $Z_{T_{Thin}}$ and gridded ε_{Thin} , and then weighted by the gridded thin cloud cover C_{Thin} . The total gridded surface LW CRE is the sum of the two.

$$CRE = CRE_{Opaque} + CRE_{Thin}. \quad (5)$$

In the retrievals, we tested both Z_{FA} and $Z_{T_{Opaque}}$ for estimating the mean altitude of opaque clouds (as discussed in Sect. 3.1).

295 $Z_{T_{Opaque}} Z_{FA}$

4 Modeled CRE sensitivity to cloud properties

300 This section establishes parameterizations of the surface LW CRE against cloud altitude and emissivity over a single cloudy column using radiative transfer computations (Sect. 4.1). Then it analyzes the sensitivity of the surface LW CRE to the humidity and temperature profiles (Sect. 4.2), and to the surface elevation (Sect. 4.3).

4.1 Sensitivity of the CRE to cloud altitude

Figure 3 shows the results of numerous simulations for the opaque cloud column (Fig. 3a) and the thin cloud column (Fig. 3b) for a specific atmospheric state over oceans in January at a latitude of 39° N. CRE_{Opaque} decreases approximately linearly with opaque cloud altitude at a rate of $-6 \text{ W m}^{-2} \text{ km}^{-1}$ in this atmospheric state. This figure shows that the surface LW cloud radiative effect depends mostly on the mean altitude of the cloud and only weakly on the detailed vertical cloud distribution and the cloud bottom altitude. CRE_{Thin} also decreases linearly with thin cloud altitude, and the rate of decrease depends linearly on the cloud emissivity. The linearity of these relationships is consistent with Ramanathan et al. (1977) and 310 Vaillant de Guélis et al. (2017, 2018). It is an empirical relation derived from radiative transfer calculations that has been verified in the observation at the TOA in Vaillant de Guélis et al. (2017a, 2018). Corti and Peter (ACP 2009) also derived an empirical relationship (power laws) from radiative transfer computation. Our linear relationship can be seen as an approximation of the Corti and Peter (2009) power law.

315 Based on a regression, we obtain the following linear relationships between the surface LW CRE and cloud altitude and emissivity:

$$CRE_{Opaque} = C_{Opaque} \left[a(RH, T) Z_{T_{Opaque}} + b(RH, T) \right] \quad (6)$$

$$CRE_{Thin} = C_{Thin} (\epsilon_{Thin} + 0.06) \left[a(RH, T) Z_{T_{Thin}} + b(RH, T) \right] \quad (7)$$

320

Where $a(RH, T)$ and $b(RH, T)$ are constants whose values depend on the humidity and temperature profiles as discussed hereafter. For the specific case presented in Fig. 3, $a = -6$ and $b = 88$.

4.2 Sensitivity of the CRE to humidity and temperature profiles

The temperature and humidity profiles in the first layers of the atmosphere largely vary according to seasons and location as presented in Fig. A3 in appendix A. Since these are variables that influence the surface LW CRE, their variations must be taken into account in order to retrieve the global surface LW CRE.

As an example, Figure 4.a presents the Opaque surface LW CRE for a standard humidity profile and Figure 4.b presents the Opaque surface LW CRE for an enhanced humidity profile (shown in Fig. A4). A 10% change in humidity in the first few km of the tropical atmosphere leads to a surface LW CRE change of 7.7 W m^{-2} for a cloud at 1 km and by 5 W m^{-2} for a cloud at 4 km. To capture some variability of humidity and temperature, we have established similar relationships as in Fig. 3 for each month and latitude (each 2°) over land and ocean. As an example, Figure A1 shows the simulations for cloud columns for an atmospheric state over land in January at a latitude of 39° N (same as Fig. 3 but over land instead of ocean).

At this latitude, the amount of humidity is lower over land than ocean, therefore the LW $F_{\text{Cloudy}-\text{freesky}}^{\text{net}}$ over land is lower and the surface LW CRE would be larger than over the ocean. The surface LW CRE is greater than that over ocean and decreases with a rate ($a(RH,T)$) of $6.5 \text{ W m}^{-2} \text{ km}^{-1}$ instead of $6 \text{ W m}^{-2} \text{ km}^{-1}$ over ocean. Figure 5 presents the latitudinal and seasonal behavior of the linear regression coefficients ($a(RH,T)$ and $b(RH,T)$). The shape of these coefficients' spatio-temporal variation is influenced by the shape of the seasonal cycle of humidity and temperature in the first layers of the atmosphere (Fig. A3). For instance, the behavior of the intercept ($b(RH,T)$) over ocean and land (Fig. 5b and Fig. 5d, respectively) is driven by the shape of the humidity amount where the largest humidity amount (in tropical regions) causes the smallest intercept coefficients. The seasonal cycle of the surface LW CRE is more pronounced over land than over ocean because the seasonal cycles of humidity and temperature are more pronounced over land than over ocean due to the heat capacity of the surface (Chepfer et al., 2019).

4.3 Sensitivity of the CRE to surface elevation

In order to take the surface elevation in the simulation into account, we consider the surface temperature to be the temperature of the atmospheric layer located at the same altitude as the surface elevation with respect to sea level, and we discard all layers located between sea level and the altitude of surface elevation. We then performed numerous radiative transfer simulations corresponding to different clouds, as described in section 3.2.

The results presented in Figure 6 show the sensitivity of the surface LW CRE to the surface elevation over continents in January at 39° N . As the surface elevation increases, the atmosphere is dryer so the $F_{\text{Cloudy}-\text{freesky}}^{\text{net}}$ decreases, and the surface LW CRE increases. The same cloud with the same cloud properties (i.e., same altitude and emissivity) will warm a surface with a high elevation more than a low elevation. For instance, an opaque cloud at an altitude of 5.5 km msl (mean sea level) will warm a surface at sea level by 58 W m^{-2} and a surface with an elevation of 4 km msl by 102 W m^{-2} . These results are consistent with Wang et al. (2019) who found that the surface LW CRE increases over Summit station in Greenland due to

the dry atmosphere at high elevations. We performed radiative transfer simulations for different surface elevations at all
355 latitudes and months (not shown) and used these to retrieve the surface LW CRE from space-based lidar observations over
land. Thus, the regression coefficients over land depend also on surface elevation, with a 100 m resolution ($a(RH,T,SE)$,
 $b(RH,T,SE)$).

5 New CALIPSO–GOCCP surface LW cloud radiative effect

360 5.1 Orbit Product

Figure 7 (top panel) shows the CALIPSO–GOCCP cloud vertical mask (Guzman et al., 2017) for two different parts of an orbit, both in the tropical region. The blue areas over green areas represent the opaque clouds. The blue areas over white areas represent thin clouds. The second line represents the instantaneous surface LW CRE derived from CALIPSO–GOCCP instantaneous cloud properties (opaque cloud altitude, thin cloud altitude and emissivity; CRE_{GOCCP}), as described in Sect.

365 3.3. As expected, the surface LW CRE is larger for opaque clouds (Fig. 7a, $\sim 22 \text{ W m}^{-2}$) than for thin clouds (Fig. 7b, $\sim 5 \text{ W m}^{-2}$) for almost the same atmosphere.

5.2 Gridded Product

Figure 8a shows the map of the surface LW CRE derived from CALIPSO–GOCCP observations (CRE_{GOCCP}) over the 2008–2020 time period.

370 In annual global means, clouds radiatively warm the surface in the LW domain by 27 W m^{-2} . CRE_{GOCCP} is maximal in the Southern Ocean ($50\text{--}65 \text{ W m}^{-2}$) where the warm opaque low clouds are numerous, as already stated by L’Ecuyer et al. (2019) and Henderson et al. (2013). There are also particularly high values in the North Atlantic ($> 55 \text{ W m}^{-2}$), observed between Svalbard and Greenland. In the tropics, clouds typically radiatively warm the surface in the LW domain by only 15 W m^{-2} . The moist tropical oceanic atmosphere enhances the downward clear-sky fluxes, which decreases the surface LW CRE over
375 these oceans. The maximum tropical CRE_{GOCCP} (30 to 40 W m^{-2}) is produced by warm opaque low oceanic stratocumulus clouds along the west coast of the continents.

Over continents, the weakest CRE_{GOCCP} ($< 5 \text{ W m}^{-2}$) occurs over Wadi Abadi basin in the Egyptian desert (25° N , 33° E), a cloud free region most of the time (80%). The largest CRE_{GOCCP} ($60\text{--}65 \text{ W m}^{-2}$) occurs over the Tibet Autonomous Region (29° N , 97° E), where the opaque cloud cover is high (58%) and the mean surface elevation is high (4.42 km) over 2.5
380 million km^2 . Here, the high amount of moisture is uplifted towards southern Tibet, amplified by Rayleigh distillation as the vapor moves over the Himalayan mountains (He et al., 2015), which enhances the formation of opaque clouds.

CALIPSO space-based lidar differentiates well opaque clouds from thin clouds. Therefore, we can decompose the surface LW CRE derived from CALIPSO–GOCCP observations into contributions due to opaque clouds (CRE_{Opaque} : Fig. 8b) and thin clouds (CRE_{Thin} : Fig 8c). This decomposition shows that 85% (23 W m^{-2}) of the overall annual global mean
385 CRE_{GOCCP} (27 W m^{-2}) is produced by opaque clouds. Their effect is maximal ($50\text{--}55 \text{ W m}^{-2}$) over the extra-tropical oceans (60° S and 60° N) where low warm opaque clouds are numerous. Thin clouds contribute only 15% (4 W m^{-2}) to the global

CRE_{GOCCP} , and their effect is maximal ($\sim 13 \text{ W m}^{-2}$) over the dry continental polar regions of the Greenland and Antarctic ice sheets, where the thin cloud cover is large ($\sim 40\%$).

6. Evaluation of the new surface LW cloud radiative effect against ground-based stations

6.1. Method

395 Comparisons between ground-based measurements and the satellite-derived products (CRE_{GOCCP} , CRE_{2BFLX}) provide a direct evaluation of the satellite retrievals, but are limited by the difference in the spatial resolution of the satellite-derived product ($2^\circ \times 2^\circ$) and the ground station observations (a few meters). For the satellite retrievals, we extract the monthly $2^\circ \times 2^\circ$ grid box centered at each ground site. For the ground-based observations, we extract the hourly observation at CALIPSO satellite overpass time above each ground site (two observations per day), and average over each month. We consider all days of each month, even if CALIPSO has no sampling over the site because there are only a few days where CALIPSO observations are not available (e.g., 18 days in 2008). Moreover, in this study, we are interested in an accurate representation of the surface LW CRE inter-annual variability, that might have significant impacts on climate-relevant processes, and not only in an accurate representation of the anomalies observed in e.g. Rutan et al., (2015). That CALIPSO is missing some sampling over the ground-based site will likely not significantly affect the inter-annual variability (i.e. months of maxima / minima of the surface LW CRE). The locations of the three ground-based sites are reported in the maps (stars in Fig. 14).

6.2 Time series

405 Over the Summit Station Greenland site, on average compared to ground-based observations, CALIPSO-GOCCP underestimates the surface LW CRE by 8.5 W m^{-2} , while 2BFLX underestimates it by 16.4 W m^{-2} (Fig. 9a). Averages over the 2008–2010 and 2011–2015 periods (Fig. 10) show that these biases calculated for a short period are similar to the longer periods. Over the 2008–2011 time period, CRE_{GOCCP} is close to CRE_{2BFLX} and both show consistent summer maxima and winter minima, with 2BFLX slightly smaller than CALIPSO-GOCCP (0.8 W m^{-2}). Over the 2011–2015 time period, CRE_{GOCCP} and the ground station data show similar annual cycles and CALIPSO-GOCCP remains smaller than the Greenland site (13.0 W m^{-2}). While this comparison suggests that CALIPSO-GOCCP could be biased somewhat low compared to the ground-station perspective over Greenland, it is also clear that this approach captures the annual variability with a correlation coefficient between the CALIPSO-GOCCP and ground base site of 0.69 and RMSE of 15.9 W m^{-2} . The retrieval using Z_{FA} instead of $Z_{T_{Opaque}}$ seems to compare to the Greenland ground-based observations more favorably (correlation coefficient of 0.70 and RMSE of 15.0 W m^{-2})

415 Over the mid-latitude continental site (Fig. 9b) on average, CALIPSO-GOCCP underestimates the surface LW CRE by 5.7 W m^{-2} compared to ground-based observations with a correlation coefficient of 0.73 and RMSE of 11.0 W m^{-2} , while 2BFLX underestimates it by 9.4 W m^{-2} with a correlation coefficient of 0.67 and RMSE of 15.5 W m^{-2} .

Over the tropical ocean site (Fig. 9c) on average, CALIPSO–GOCCP underestimates the surface LW CRE by 2.3 W m^{-2} compared to ground-based observations and 2BFLX underestimates it by 4.1 W m^{-2} . This same behavior is found on the map of differences between CRE_{GOCCP} and CRE_{2BFLX} (Fig. 14) along the tropical Pacific and tropical Atlantic oceans where 2BFLX underestimates the surface LW CRE comparing to CALIPSO–GOCCP.

6.3 Seasonal cycle

Figure 10 presents the comparison of seasonal cycles between the satellite retrievals and the ground-based observations. Over the Greenland site (Fig. 10a,d), CALIPSO–GOCCP and 2BFLX find the same seasonal cycle of the surface LW CRE with maxima in July, that correspond to the maximum opaque cloud cover, same as the ground-based seasonal cycle. Over the mid-latitude continental site (Fig. 10b,e), the surface LW CRE seasonal cycle of CALIPSO–GOCCP and 2BFLX are close to each other and the two satellite-derived products show similar seasonal cycles as the ground station. Over the tropical ocean site (Fig. 10c,f), the surface LW CRE seasonal cycle is relatively flat.

6.4 Diurnal cycle

The time sampling is limited for CALIPSO–GOCCP and 2BFLX as they observe each location only two times per day at about 1:30 and 13:30 local solar time, and they do not implement diurnal variation correction in their algorithm. Nevertheless, diurnal variations of the cloud fraction profiles documented by the CATS/ISS lidar (Noel et al., 2018; Chepfer et al., 2019) indicate that the average of the cloud profiles collected at 1:30am and 1:30pm time is similar to the average of all the profiles collected along the 24 hours with 1:30pm corresponds to the minimum in cloud profiles along the day, while 1:30am corresponds to a maximum (Fig. 7 in Noel et al., 2018). But this statement is valid only between 55°S and 55°N . Figure 11 shows the diurnal surface LW CRE variation observed at SIRTa in France, together with CALIPSO–GOCCP surface LW CRE estimates. This comparison suggests that the average of the two CALIPSO overpasses each day is similar to the ground-based observed daily mean over this site. The absence of diurnal cycle correction might not be an important source of error in CALIPSO–GOCCP surface LW CRE estimates.

7. Evaluation of the new surface LW cloud radiative effect against others satellites products

7.1 Comparison along piece of orbits at footprint scale

CloudSat, CALIPSO, and CERES/Aqua satellites are part of the A-Train constellation (Stephens et al., 2002) and closely
445 matched in time (<5 min) and hence collocated by default, so we can compare them directly, assuming that the atmospheric
changes occurring within 5 minutes are negligible.

Figure 12 shows a comparison between the surface LW CRE from the three spatial satellite retrievals along four pieces of
orbits located over regions with different atmospheres and different surfaces. Figure 12 (top panel) shows the vertical
450 CALIPSO–GOCCP cloud mask (Guzman et al., 2017), while Figure 12 bottom panel represents the comparison between the
surface LW CREs.

Orbit A passes over the East Pacific Ocean and observes a deep convective tower, a mid-level opaque cloud at an altitude of
7 km and a low opaque cloud. The differences in surface LW CRE between the three spatial restitutions do not exceed 5 W
m⁻². Nevertheless, within a small part of the orbit between 11.3°N and 11.8°N (Fig. B1) we observe that the CALIPSO–
455 GOCCP retrieval is lower than the other two products, because the lidar does not detect a low cloud below Z_{FA} that is
detected by CloudSat (shown in Fig. B1.b)

Orbit B passes over the West Pacific Ocean and observes variable yet shallow clouds in the boundary layer (< 2 km). The
 CRE_{GOCCP} is intermittently larger than the other two products by ~15 W m⁻². CALIPSO–GOCCP (90 m cross track, 330 m
along orbit track) detects shallow clouds in the boundary layer and, during the thickest of these, retrieves a surface LW CRE
460 that is larger than the CERES (CloudSat) retrieval, which is based on a 20 km (5km) footprint and might miss these clouds.

Orbit C passes over ocean stratocumulus regions and observes a low opaque cloud. Between 12°S and 19°S, the CRE_{GOCCP}
(almost 60 W m⁻²) is smaller than CRE_{2BFLX} by ~5 W m⁻² and smaller than CRE_{CERES} by 15 W m⁻².

Orbit D passes over Antarctica and observes opaque clouds at high (10 km) and mid-level (4–5 km) altitudes. In the presence
of high opaque clouds (between 68°S and 71°S or between 73°S and 77°S), CRE_{GOCCP} is lower than CRE_{CERES} by up to 20
465 W m⁻² and CRE_{2BFLX} by up to 40 W m⁻², but typically compares most favourably with CRE_{CERES} over the full scene.

These orbits show that by not including CloudSat, CALIPSO–GOCCP surface LW CREs are biased low by typically 10 W
m⁻² compared to 2BFLX and 15 W m⁻² compared to CERES-CCCM in regions of deep convection. In stratocumulus,
CALIPSO–GOCCP is biases low by typically 5 W m⁻² compared to 2BFLX and -15 W m⁻² compared to CERES-CCCM.

7.2 Global Statistical at footprint scale over ocean

Figure 13a shows a comparison between the surface LW CRE from CALIPSO–GOCCP observations (90 m cross track, 330 m along orbit track) collocated with CERES–CCCM that uses full-resolution CALIPSO and CloudSat data and reports the results over 20-km CERES footprints. We consider only the CERES–CCCM footprints where all the CALIPSO–GOCCP profiles falling within this footprint are opaque and where there are more than 40 profiles. To retrieve the surface LW CRE from CALIPSO–GOCCP observations at the CERES–CCCM footprint resolutions, we average all $Z_{T_{Opaque}}$ falling within CERES–CCCM’s footprint and compute the surface LW CRE using the relationships found in Sect. 4.

We see a strong correlation between the surface LW CRE from CERES–CCCM observations and the surface LW CRE from CALIPSO–GOCCP observations ($R=0.85$). Two significant departures from the one-to-one comparison line are observed: one for high values of the surface LW CRE, and the second for low values. In the first pattern, for surface LW CRE greater than 70 W m^{-2} , CRE_{GOCCP} is larger than CRE_{CERES} . This pattern corresponds to some low marine opaque clouds in mid-latitude regions (not shown). To reconcile the two products, CRE_{GOCCP} should be smaller by almost 5 W m^{-2} . One way to reduce this difference would be to increase the altitudes of clouds but, due to attenuation of the signal in opaque clouds, the space-based lidar would already potentially overestimate the overall height of the clouds. Thus, the cloud height is likely not the source of this difference. Another way to reduce the surface LW CRE is by decreasing the cloud cover or the cloud opacity. However, thanks to its high spatial resolution, the space-based lidar measures the cloud cover with precision, and it should not overestimate the cloud opacity. Thus, the source of this apparent bias is more likely an underestimation of the humidity profiles used to retrieve the surface LW CRE in the presence of clouds. An increase in the humidity at these times would increase the $F_{Cloudy-freesky}^{net}$ and therefore decrease the surface LW CRE. A final possibility for the difference is that each product has a unique estimate of the cloud cover due to vastly different fields-of-view. CALIOP footprints are only a small fraction of the CERES footprint, so part of the CERES footprint could be cloud free even if the 40 CALIOP profiles are opaque. A study by Kato et al. (2010) demonstrated that the differences between CERES and CloudSat/CALIPSO cloud fractions decrease when averaged over area and time. Hence, this difference is likely not the primary source of bias when comparing large statistical datasets.

The second regime of differences among the products is for surface LW CRE less than 30 W m^{-2} (Fig. 13a), which corresponds to high opaque clouds over the warm pool region (not shown). Here, CRE_{GOCCP} is smaller than CRE_{CERES} . The underestimation of surface LW CRE by CALIPSO–GOCCP compared to CERES–CCCM could be caused by the full attenuation of the laser beam in deep convective clouds such that CALIPSO–GOCCP overestimates the mean altitude of opaque clouds.

Figure 13b represents the comparison between the surface LW CRE from CALIPSO–GOCCP observations (90 m cross track, 330 m along orbit track) collocated with CloudSat 2BFLX product at a resolution of CloudSat footprint (5 km). We also consider only the CloudSat footprints where all the CALIPSO–GOCCP profiles falling within this footprint are opaque,

and where there are more than 10 profiles, and we compute CRE_{GOCCP} by averaging all $Z_{T_{Opaque}}$ falling within CloudSat footprint.

Three significant departures from the one-to-one comparison line are observed: one for low values where CALIPSO–GOCCP < 2BFLX, one for high values of the surface LW CRE where CALIPSO–GOCCP > 2BFLX, and one for high values where CALIPSO–GOCCP < 2BFLX. The two first patterns appear to be similar to Fig. 13a, and show up for the same reasons as described above. The last pattern of differences among the products is for large values of CRE where 2BFLX is larger than CALIPSO–GOCCP. This pattern corresponds to a sub-sample of marine opaque clouds (25% of the opaque cloud collocated) in mid-latitude regions (not shown) where CloudSat is able to detect lower clouds than CALIPSO. Using Z_{FA} instead of $Z_{T_{Opaque}}$ in CALIPSO–GOCCP retrieval would shift this pattern upward and reduce the sample (17% Vs 25%).

The differences shown in Fig. 13 are expected when comparing satellite products at footprint scales that use different remote sensing techniques. However, when looking at the gridded product distributions (fig. B3) instead of instantaneous collocated data, the 2BFLX and CALIPSO–GOCCP agree well.

7.3 Global mean comparison at gridded scale

To compare 2BFLX and CALIPSO–GOCCP at gridded scale, we averaged 2BFLX initially at $1^\circ \times 1^\circ$ resolution to $2^\circ \times 2^\circ$ like CALIPSO–GOCCP.

Figure 14a shows global maps of differences between CALIPSO–GOCCP and 2BFLX. This comparison gives an overview of the differences between the two surface LW CRE spatial products, but it may mask some differences given the fact that the two spatial products are averaged in time (monthly) and space ($2^\circ \times 2^\circ$ latitude-longitude gridded).

In global annual mean, CALIPSO–GOCCP is slightly higher compared to 2BFLX (CRE_{2BFLX} ; 0.7 W m^{-2}).

Compared to 2BFLX (Fig. 12b), CRE_{GOCCP} is slightly larger than CRE_{2BFLX} over tropical oceans. Over lands, CRE_{GOCCP} is slightly lower than CRE_{2BFLX} . The maximum difference occurs over land along the western coasts of the North and South American continents and the Himalayan mountains, where the surface elevation is above 2.5 km. This difference might be due to the CloudSat CPR’s long powerful pulse (Fig. B2), which generates a surface clutter echo that tends to partially mask signals from clouds forming below $\sim 1 \text{ km}$ (Marchand et al., 2008). Over icy polar areas, the two products are very similar.

Zonal averages of the surface LW CRE for 2008–2010 (Figure 14c) show that the surface LW CRE is generally low in tropical regions and increases towards the mid-latitudes as the atmospheric moisture decreases. Values do not vary much northward of about 50°N . To the south, a maximum occurs at about 60°S , with a decline towards the far south due to less cloudiness. Over the broad domain, reaching from 60°N to 60°S , the two satellite techniques show similar zonal means, with differences among the two typically not exceeding 3 W m^{-2} .

7.4 Variations of 13 years (2008–2020)

Figure 15a shows the temporal evolution of the surface LW CRE anomaly from the two satellite-derived products. A decomposition, separating continents from oceans and NH from SH, is presented in Figs. 17b–g.

535 The phasing of the annual cycle of CRE_{GOCCP} and CRE_{2BFLX} anomalies are roughly similar over the 2008–2010 time period. The phasing of the annual cycle of the two products is actually quite consistent for both NH and SH over both land and ocean. For the NH land (Fig. 17d), the CRE_{2BFLX} is slightly larger than CRE_{GOCCP} . However, it is interesting that even over NH land the annual minima match pretty well.

540 The inter-annual variability is pretty interesting. For example, the NH winter maximum in CALIPSO–GOCCP products appears to vary by up to about 3 W m^{-2} from year to year. That is the kind of variability that might have significant impacts on climate-relevant processes like melting of the cryosphere.

8. Discussion

545 8.1 About the space lidar missing the opaque cloud base

Based on the comparison of orbits (Fig. B1), we observe that when the space lidar does not see the cloud base, CALIPSO-GOCCP surface LW CRE underestimates the local surface LW CRE compared to 2BFLX. However, the deep convective opaque clouds cover a small part of the overall tropics compared to other clouds. Therefore, this effect does not dominate the global comparison (Fig. 14a), where CALIPSO-GOCCP surface LW CRE, is contrarily slightly larger than the other
550 satellite product. Figure 13b (where 2BFLX is about 70 W m^{-2}) and Figure 14a (Southern Ocean) consistently suggest that CALIPSO not seeing cloud base leads to CALIPSO-GOCCP underestimating the surface LW CRE more frequently in the extra-tropical oceanic storm tracks than elsewhere.

To test if the differences between CALIPSO-GOCCP and other satellite products come from the space lidar not seeing the cloud base, we used two different approaches.

555 First, we used Z_{FA} instead of $Z_{T_{Opaque}}$ in the CALIPSO-GOCCP retrieval. By definition Z_{FA} is always lower in altitude than $Z_{T_{Opaque}}$. Therefore, this change should reduce the difference between the CALIPSO-GOCCP surface LW CRE and other surface LW CREs, if the differences were due to CALIPSO missing the cloud base. Fig. 14b shows that the difference between CALIPSO-GOCCP surface LW CRE and the other satellite products increases instead of reduces when using Z_{FA} instead of $Z_{T_{Opaque}}$. This suggests that the differences in surface LW CRE are likely not often due to CALIPSO mis-
560 representing the cloud base and that, in the majority of the cases, the cloud base might not be far from Z_{FA} . Nevertheless, contrarily to the satellite retrieval inter-comparison, using Z_{FA} instead of $Z_{T_{Opaque}}$ leads to slightly better agreement between CALIPSO-GOCCP LW CRE and ground-based retrievals (e.g., Fig. 9, 10). Ground-based measurements derive directly the surface LW CRE. While there are certainly challenges in comparing ground-based and satellite estimates, we should consider the ground-based estimates to be of pretty high quality.

565 Second, we used the cloud-base height (called CBASE dataset) described in Mülmenstädt et al. (2018) in instead of Z_{FA} to compute $Z_{T_{Opaque}}$. In the CBASE dataset, the Cloud base-height value is given at a horizontal resolution of 40 km along the CALIPSO orbit track in the portion of the orbit where clouds are opaque. Along each CALIPSO orbit, we collocated the cloud-base height dataset with the CALIPSO-GOCCP dataset and replaced Z_{FA} by the Cloud-base-height value given in the CBASE dataset. Then we computed $Z_{T_{Opaque}}$ and the Surface LW CRE. CBASE values are distributed in all latitudes and are
570 available in 33.2% of all the CALIPSO opaque profiles because CBASE can be retrieved only when thin clouds are detected

within the 40 km orbit piece that also contains opaque cloud profiles. Comparing Fig. 16a and b indicates that the subsample of opaque CALIPSO-GOCCP profiles where CBASE is documented contains both large values of surface LW CRE associated to mid- and low-level clouds located at mid-latitudes (upper right data in plot b) and small values of CRE (lower left), but it does not include the data where 2BFLX is much larger than CALIPSO-GOCCP which correspond to mid-latitude oceanic opaque clouds. When replacing Z_{FA} (Fig. 16b) by CBASE (Fig. 16c) in the CALIPSO-GOCCP algorithm, the CRE CALIPSO-GOCCP rises slightly almost everywhere because CBASE is lower in altitude than Z_{FA} , and CALIPSO-GOCCP CRE values lower than 18 W m^{-2} are no more present. The latter correspond to both deep convective clouds and shallow boundary layer clouds. The correlation between 2BFLX and CALIPSO-GOCCP is similar whether we use Z_{FA} (0.79) or CBASE (0.78) in the CALIPSO-GOCCP algorithm.

This sensitivity study suggests that using a more advanced cloud base height (here CBASE) Z_{FA} derived from lidar measurements than Z_{FA} in CALIPSO-GOCCP algorithm will increase the CRE value retrieved in some opaque cloud profiles slightly, but it does not fundamentally change the results.

Thus, what these results mean collectively is that: 1) The inability of CALIPSO to observe the cloud base likely does have some effect (with respect to ground-based measurements). 2) This effect actually makes the comparison with other satellite products worse, which means that there are other issues (possibly also with the other satellite product) leading to further differences

8.2 About the sub-daily variability of the Humidity and temperature profiles

Looking for other issues that could explain the differences between satellite products, we examined humidity and temperature profiles.

Contrarily to the CALIPSO-GOCCP surface LW CRE retrieval method, CERES-CCCM and 2BFLX retrievals of surface flux account for sub-daily variations in temperature/humidity and capture regional variations (e.g., eastern vs. western tropical Pacific), climate events (e.g., ENSO) and extreme changes over polar regions. 2BFLX uses 3-hourly atmospheric state variable data on a half-degree Cartesian latitude and longitude grid from AN-ECMWF.

As shown in Fig. 14, monthly mean gridded surface LW CRE from CALIPSO-GOCCP are consistent with 2BFLX, even though 2BFLX uses sub-daily spatio-temporal resolutions of temperature/humidity profiles, while CALIPSO-GOCCP uses monthly mean temperature/humidity profiles. Nevertheless, instantaneous CALIPSO-GOCCP surface LW CRE retrieval are likely more biased than the monthly mean gridded CALIPSO-GOCCP surface LW CRE, due to the use of monthly mean temperature/humidity profiles, because monthly means miss extreme humidity and temperature profiles. To estimate the error on the instantaneous GOCCP surface LW CRE values, we compared the instantaneous CALIPSO-GOCCP values

obtained using 6-hourly temperature/humidity profiles from ERAi, with one obtained using monthly means and 2BFLX, for one day at footprint scales.

605 Figure 17 shows that using sub-daily profiles in CALIPSO-GOCCP makes the comparison with other satellite products worse at footprint scale. More analysis (not shown) indicate that for thin clouds, CALIPSO-GOCCP surface LW CRE retrieved using sub-daily temperature/humidity profiles agrees better with 2BFLX (at 5km resolution) than CALIPSO-GOCCP surface LW CRE retrieved using monthly mean profiles. In contrast, the agreement between CALIPSO-GOCCP and other products are lower when using sub-daily temperature/humidity profiles in all other cases: opaque clouds and also thin clouds when compared to CERES-CCCM (at 20km). Overall, this suggests that the differences between the three daily products are likely due to other causes than CALIPSO-GOCCP using monthly mean temperature/humidity profiles.

610

9 Conclusion

615 In this paper, we build a new surface LW CRE dataset from five cloud properties observed with space-based lidar (CALIPSO–GOCCP). The robustness of the new surface LW CRE dataset at global scales is evaluated by comparing it to existing independent space-based surface LW CRE retrievals from CERES and CloudSat (Kato et al., 2010; L’Ecuyer et al., 2019) at instantaneous footprint scale, as well as at $2^\circ \times 2^\circ$ gridded global scale. It is also evaluated locally by comparison with observations collected at three ground stations in polar (Shupe et al., 2013), mid-latitude (Haeffelin et al., 2005; 620 Chiriaco et al., 2018) and tropical (Roesch et al., 2011) locations. The (admittedly limited) ground-station comparisons actually showed that the CALIPSO–GOCCP product agreed the best with the ground measurements compared to the other satellite product. It appears that it captures the inter-annual variability well. Additionally, there are other specific aspects where the CALIPSO–GOCCP product appears to be an improvement over others, in providing a longer time series, including over bright polar surfaces.

625 This might be surprising given the simplicity of the surface radiation retrieval method used to produce the CALIPSO–GOCCP product, but this is understandable because of the two following physical elements:

i) The CALIPSO–GOCCP method directly retrieves the surface LW CRE without retrieving the surface radiative fluxes first. This approach minimizes the impact of the uncertainties due to surface characteristics (surface emissivity, roughness, deserts and frozen surfaces), which strongly influence the fluxes but not the surface LW CRE.

630 ii) The surface LW CRE is primarily driven by the cloud cover, the cloud opacity and the cloud altitude, which are documented by space-based lidar over all types of surfaces. Moreover, the lidar approach distinguishes quite well the opaque clouds from the optically thin clouds. Lastly, it documents the detailed vertical cloud profile, except below the altitude where the laser is fully attenuated where we overestimate the mean altitude of opaque clouds. This last limitation only weakly influences the surface LW CRE retrieval because the lidar is fully attenuated at an altitude lower than 3 km above the surface

635 most of the time (Guzman et al., 2017), except in deep convection and some mid-latitude clouds. Indeed, along deep convective tropical regions where the attenuation of the lidar beam might not see the whole bottom part of the cloud and can underestimate the surface LW CRE by almost 5 W m^{-2} . All three satellite datasets exhibit some differences relative to ground-based measurements.

The evaluation of this new CALIPSO-based surface LW CRE against other datasets also showed that (overall) this new 640 retrieval agrees well with CloudSat-based estimates (L’Ecuyer et al., 2019) and CERES-CCCM, but these latters are limited in time until only 2011 due to a battery anomaly.

This new global dataset extends over more than a decade, thanks to the long CALIPSO mission. The global mean temporal evolution over 13 years (2008–2020) shows that the maximum anomaly of the surface LW CRE derived from CALIPSO–GOCCP in the NH winter varies by up to about 3 W m^{-2} from year to year. . This new dataset will be extended in time by including future data acquired by CALIPSO, as well as with data collected by forthcoming space lidars onboard the European Earth Cloud, Aerosol and Radiation Explorer mission (EarthCARE; Illingworth et al., 2015) and the next generation of US cloud/aerosols lidar space missions if we are able to reconcile data from successive space lidar missions.

The dataset presented in this paper will be used in a future study to better understand the mechanisms of cloud radiative feedbacks at the Earth's surface, i.e. how a change in surface temperature modifies the cloud properties that change the surface LW CRE, which in turn influences the temperature. An essential first step is to understand which cloud variables have driven the surface LW CRE variations over the last decade in regions that are most sensitive to global warming, such as the polar regions, as well as on a global scale. Several recent studies (e.g., Taylor et al., 2007; Zelinka et al., 2012a, 2012b ; Vaillant de Guélis et al., 2017a, 2017b, 2018) have shown that it is possible to attribute changes in CRE to variations in cloud properties when 1) the CRE is related to a limited number of cloud properties by sufficiently simple relationships that they can be derived analytically, 2) the CRE retrieved by these analytical relationships is sufficiently reliable, i.e. within the uncertainty domain of the existing datasets, and 3) the CRE is retrieved using reliable observations over all surface types and on long global time scale. The CALIPSO–GOCCP surface LW CRE dataset developed in this study satisfies these three conditions. The next step of this work will therefore be to analyze this 13-year dataset to understand these mechanisms. The goal of this research is to improve our understanding of the response of clouds to the warming induced by anthropogenic activities, which is a major source of uncertainty in climate change predictions.

Acknowledgements. We are grateful to Airbus for contributing to the funding of the PhD grant of the first author. We acknowledge Jean Lac for technique support and Erik Hojgard-Olsen for editing the texte. We acknowledge NASA/CNES for the CALIPSO–level–1 data and the Mesocentre ESPRI/IPSL for the computational resources. We recognize the support of CNES who supported the development of the CALIPSO–GOCCP product. MDS and MRG acknowledge support from the National Science Foundation grants PLR-1314156 and OPP-1801477.

Data: the new CALIPSO–GOCCP surface LW CRE dataset presented in this paper will be made available on <https://climserv.ipsl.polytechnique.fr/cfmip-obs/index.html>

Appendix A: Sensitivity of the surface LW CRE to humidity and temperature

Appendix B: Sensitivity of the surface LW CRE to cloud base height

References

- Acquaotta, F. and Fratianni, S.: THE IMPORTANCE OF THE QUALITY AND RELIABILITY OF THE HISTORICAL
675 TIME SERIES FOR THE STUDY OF CLIMATE CHANGE, *ABClimate*, 14, <https://doi.org/10.5380/abclima.v14i1.38168>, 2014.
- Allan, R. P.: Combining satellite data and models to estimate cloud radiative effect at the surface and in the atmosphere: Cloud radiative effect at the surface and in the atmosphere, *Met. Apps*, 18, 324–333, <https://doi.org/10.1002/met.285>, 2011.
- van den Broeke, M., Bamber, J., Ettema, J., Rignot, E., Schrama, E., van de Berg, W. J., van Meijgaard, E., Velicogna, I.,
680 and Wouters, B.: Partitioning Recent Greenland Mass Loss, *Science*, 326, 984–986, <https://doi.org/10.1126/science.1178176>, 2009.
- Austin, R. T., A. J. Heymsfield, and G. L. Stephens (2009), Retrieval of ice cloud microphysical parameters using the CloudSat millimeter-wave radar and temperature, *J. Geophys. Res.*, 114, D00A23, doi:10.1029/2008JD010049.
- Cesana, G., Kay, J. E., Chepfer, H., English, J. M., and Boer, G.: Ubiquitous low level liquid containing Arctic clouds:
685 New observations and climate model constraints from CALIPSO GOCCP, *Geophys. Res. Lett.*, 39, 2012GL053385, <https://doi.org/10.1029/2012GL053385>, 2012.
- Chepfer, H., Bony, S., Winker, D., Cesana, G., Dufresne, J. L., Minnis, P., Stubenrauch, C. J., and Zeng, S.: The GCM-Oriented CALIPSO Cloud Product (CALIPSO-GOCCP), *J. Geophys. Res.*, 115, D00H16, <https://doi.org/10.1029/2009JD012251>, 2010.
- 690 Chepfer, H., Brogniez, H., and Noel, V.: Diurnal variations of cloud and relative humidity profiles across the tropics, *Sci Rep*, 9, 16045, <https://doi.org/10.1038/s41598-019-52437-6>, 2019.
- Chiriaco, M., Dupont, J.-C., Bastin, S., Badosa, J., Lopez, J., Haeffelin, M., Chepfer, H., and Guzman, R.: ReOBS: a new approach to synthesize long-term multi-variable dataset and application to the SIRTa supersite, *Earth Syst. Sci. Data*, 10, 919–940, <https://doi.org/10.5194/essd-10-919-2018>, 2018.
- 695 Chylek, P., Lohmann, U., Dubey, M., Mishchenko, M., Kahn, R., and Ohmura, A.: Limits on climate sensitivity derived from recent satellite and surface observations, *J. Geophys. Res.*, 112, D24S04, <https://doi.org/10.1029/2007JD008740>, 2007.
- Corti, T. and Peter, T.: A simple model for cloud radiative forcing, 8, 2009.
- Curry, J. A., Schramm, J. L., Rossow, W. B., and Randall, D.: Overview of Arctic cloud and radiation characteristics, 9, 1731–1764, 1996.
- 700 Dee, D. P., Uppala, S. M., Simmons, A. J., Berrisford, P., Poli, P., Kobayashi, S., Andrae, U., Balmaseda, M. A., Balsamo, G., Bauer, P., Bechtold, P., Beljaars, A. C. M., van de Berg, L., Bidlot, J., Bormann, N., Delsol, C., Dragani, R., Fuentes, M., Geer, A. J., Haimberger, L., Healy, S. B., Hersbach, H., Hólm, E. V., Isaksen, L., Kållberg, P., Köhler, M., Matricardi, M., McNally, A. P., Monge-Sanz, B. M., Morcrette, J.-J., Park, B.-K., Peubey, C., de Rosnay, P., Tavolato, C., Thépaut, J.-N., and Vitart, F.: The ERA-Interim reanalysis: configuration and performance of the data assimilation system, *Q.J.R. Meteorol. Soc.*, 137, 553–597, <https://doi.org/10.1002/qj.828>, 2011.
- Driemel, A., Augustine, J., Behrens, K., Colle, S., Cox, C., Cuevas-Agulló, E., Denn, F. M., Duprat, T., Fukuda, M., Grobe, H., Haeffelin, M., Hodges, G., Hyett, N., Ijima, O., Kallis, A., Knap, W., Kustov, V., Long, C. N., Longenecker, D., Lupi,

- A., Maturilli, M., Mimouni, M., Ntsangwane, L., Ogihara, H., Olano, X., Olefs, M., Omori, M., Passamani, L., Pereira, E. B., Schmithüsen, H., Schumacher, S., Sieger, R., Tamlyn, J., Vogt, R., Vuilleumier, L., Xia, X., Ohmura, A., and König-Langlo, G.: Baseline Surface Radiation Network (BSRN): structure and data description (1992–2017), *Earth Syst. Sci. Data*, 10, 1491–1501, <https://doi.org/10.5194/essd-10-1491-2018>, 2018.
- Dubuisson, P.: Water vapor retrieval over ocean using near-infrared radiometry, *J. Geophys. Res.*, 109, D19106, <https://doi.org/10.1029/2004JD004516>, 2004.
- Dupont, J.-C. and Haeffelin, M.: Observed instantaneous cirrus radiative effect on surface-level shortwave and longwave irradiances, *J. Geophys. Res.*, 113, D21202, <https://doi.org/10.1029/2008JD009838>, 2008.
- Gallagher, M. R., Shupe, M. D., and Miller, N. B.: Impact of Atmospheric Circulation on Temperature, Clouds, and Radiation at Summit Station, Greenland, with Self-Organizing Maps, *J. Climate*, 31, 8895–8915, <https://doi.org/10.1175/JCLI-D-17-0893.1>, 2018.
- Garnier, A., Pelon, J., Vaughan, M. A., Winker, D. M., Trepte, C. R., and Dubuisson, P.: Lidar multiple scattering factors inferred from CALIPSO lidar and IIR retrievals of semi-transparent cirrus cloud optical depths over oceans, *Atmos. Meas. Tech.*, 8, 2759–2774, <https://doi.org/10.5194/amt-8-2759-2015>, 2015.
- Guzman, R., Chepfer, H., Noel, V., Vaillant de Guélis, T., Kay, J. E., Raberanto, P., Cesana, G., Vaughan, M. A., and Winker, D. M.: Direct atmosphere opacity observations from CALIPSO provide new constraints on cloud-radiation interactions: GOCCP v3.0 OPAQ Algorithm, *J. Geophys. Res. Atmos.*, 122, 1066–1085, <https://doi.org/10.1002/2016JD025946>, 2017.
- Haefelin, M., Barthès, L., Bock, O., Boitel, C., Bony, S., Bouniol, D., Chepfer, H., Chiriaco, M., Cuesta, J., Delanoë, J., Drobinski, P., Dufresne, J.-L., Flamant, C., Grall, M., Hodzic, A., Hourdin, F., Lapouge, F., Lemaître, Y., Mathieu, A., Morille, Y., Naud, C., Noël, V., O’Hirok, W., Pelon, J., Pietras, C., Protat, A., Romand, B., Scialom, G., and Vautard, R.: SIRTa, a ground-based atmospheric observatory for cloud and aerosol research, *Ann. Geophys.*, 23, 253–275, <https://doi.org/10.5194/angeo-23-253-2005>, 2005.
- Ham, S.-H., S. Kato, F. G. Rose, D. Winker, T. L’Ecuyer, G. G. Mace, D. Painemal, S. Sun-Mack, Y. Chen, and W. F. Miller (2017), Cloud occurrences and cloud radiative effects (CREs) from CERES-CALIPSO-CloudSat-MODIS (CCCM) and CloudSat radar-lidar (RL) products, *J. Geophys. Res. Atmos.*, 122, doi:10.1002/2017JD026725.
- Hang, Y., L’Ecuyer, T. S., Henderson, D. S., Matus, A. V., and Wang, Z.: Reassessing the Effect of Cloud Type on Earth’s Energy Balance in the Age of Active Spaceborne Observations. Part II: Atmospheric Heating, 32, 6219–6236, <https://doi.org/10.1175/JCLI-D-18-0754.1>, 2019.
- He, Y., Risi, C., Gao, J., Masson-Delmotte, V., Yao, T., Lai, C.-T., Ding, Y., Worden, J., Frankenberg, C., Chepfer, H., and Cesana, G.: Impact of atmospheric convection on south Tibet summer precipitation isotopologue composition using a combination of in situ measurements, satellite data, and atmospheric general circulation modeling: IMPACT OF CONVECTION ON TP ISOTOPIC, *J. Geophys. Res. Atmos.*, 120, 3852–3871, <https://doi.org/10.1002/2014JD022180>, 2015.
- Henderson, D. S., L’Ecuyer, T., Stephens, G., Partain, P., and Sekiguchi, M.: A Multisensor Perspective on the Radiative Impacts of Clouds and Aerosols, 52, 853–871, <https://doi.org/10.1175/JAMC-D-12-025.1>, 2013.

- Hofer, S., Tedstone, A. J., Fettweis, X., and Bamber, J. L.: Decreasing cloud cover drives the recent mass loss on the
745 Greenland Ice Sheet, 9, 2017.
- Illingworth, A. J., Barker, H. W., Beljaars, A., Ceccaldi, M., Chepfer, H., Clerbaux, N., Cole, J., Delanoë, J., Domenech, C.,
Donovan, D. P., Fukuda, S., Hirakata, M., Hogan, R. J., Huenerbein, A., Kollias, P., Kubota, T., Nakajima, T., Nakajima, T.
Y., Nishizawa, T., Ohno, Y., Okamoto, H., Oki, R., Sato, K., Satoh, M., Shephard, M. W., Velázquez-Blázquez, A.,
Wandinger, U., Wehr, T., and Zadelhoff, G.-J. van: The EarthCARE Satellite: The Next Step Forward in Global
750 Measurements of Clouds, Aerosols, Precipitation, and Radiation, 96, 1311–1332, <https://doi.org/10.1175/BAMS-D-12-00227.1>, 2015.
- Intrieri, J. M., Fairall, C. F., Shupe, M. D., Persson, P. O. G., Andreas, E. L., Guest, P., Moritz, R. M.: An annual cycle of
Arctic surface cloud forcing at SHEBA, *J. Geophys. Res.*, 107, 8039, <https://doi.org/10.1029/2000JC000439>, 2002.
- IPCC, (2021). Climate Change 2021: The Physical Science Basis. Contribution of Working Group I to the Sixth Assessment
755 Report of the Intergovernmental Panel on Climate Change, in: Masson-Delmotte, V., Zhai, P., Pirani, A., Connors, S., L,
Péan, C., Berger, S., Caud, N., Chen, Y., Goldfarb, L., Gomis, M., I, Huang, M., Leitzell, K., Lonnoy, E., Matthews, J., B, R,
Maycock, T., K, Waterfield, T., Yelekçi, O., Yu, R., Zhou, B. (Eds.), Cambridge University Press. In Press.
- Kato, S., Rose, F. G., Rutan, D. A., and Charlock, T. P.: Cloud Effects on the Meridional Atmospheric Energy Budget
Estimated from Clouds and the Earth’s Radiant Energy System (CERES) Data, 21, 4223–4241,
760 <https://doi.org/10.1175/2008JCLI1982.1>, 2008.
- Kato, S., Sun-Mack, S., Miller, W. F., Rose, F. G., Chen, Y., Minnis, P., and Wielicki, B. A.: Relationships among cloud
occurrence frequency, overlap, and effective thickness derived from CALIPSO and CloudSat merged cloud vertical profiles,
J. Geophys. Res., 115, D00H28, <https://doi.org/10.1029/2009JD012277>, 2010.
- Kato, S., Loeb, N. G., Rose, F. G., Doelling, D. R., Rutan, D. A., Caldwell, T. E., Yu, L., and Weller, R. A.: Surface
765 Irradiances Consistent with CERES-Derived Top-of-Atmosphere Shortwave and Longwave Irradiances, 26, 2719–2740,
<https://doi.org/10.1175/JCLI-D-12-00436.1>, 2013.
- Kato, S., Rose, F. G., Rutan, D. A., Thorsen, T. J., Loeb, N. G., Doelling, D. R., Huang, X., Smith, W. L., Su, W., and Ham,
S.-H.: Surface Irradiances of Edition 4.0 Clouds and the Earth’s Radiant Energy System (CERES) Energy Balanced and
Filled (EBAF) Data Product, 31, 4501–4527, <https://doi.org/10.1175/JCLI-D-17-0523.1>, 2018.
- 770 Kato, S., Rose, F. G., Ham, S. H., Rutan, D. A., Radkevich, A., Caldwell, T. E., et al. (2019). Radiative heating rates
computed with clouds derived from satellite based passive and active sensors and their effects on generation of available
potential energy. *Journal of Geophysical Research: Atmospheres*, 124, 1720–1740. <https://doi.org/10.1029/2018JD028878>
- Kay, J. E., Hillman, B. R., Klein, S. A., Zhang, Y., Medeiros, B., Pincus, R., Gettelman, A., Eaton, B., Boyle, J., Marchand,
R., and Ackerman, T. P.: Exposing Global Cloud Biases in the Community Atmosphere Model (CAM) Using Satellite
775 Observations and Their Corresponding Instrument Simulators, 25, 5190–5207, <https://doi.org/10.1175/JCLI-D-11-00469.1>,
2012.
- Kay, J. E., Deser, C., Phillips, A., Mai, A., Hannay, C., Strand, G., Arblaster, J. M., Bates, S. C., Danabasoglu, G., Edwards,
J., Holland, M., Kushner, P., Lamarque, J.-F., Lawrence, D., Lindsay, K., Middleton, A., Munoz, E., Neale, R., Oleson, K.,
Polvani, L., and Vertenstein, M.: The Community Earth System Model (CESM) Large Ensemble Project: A Community

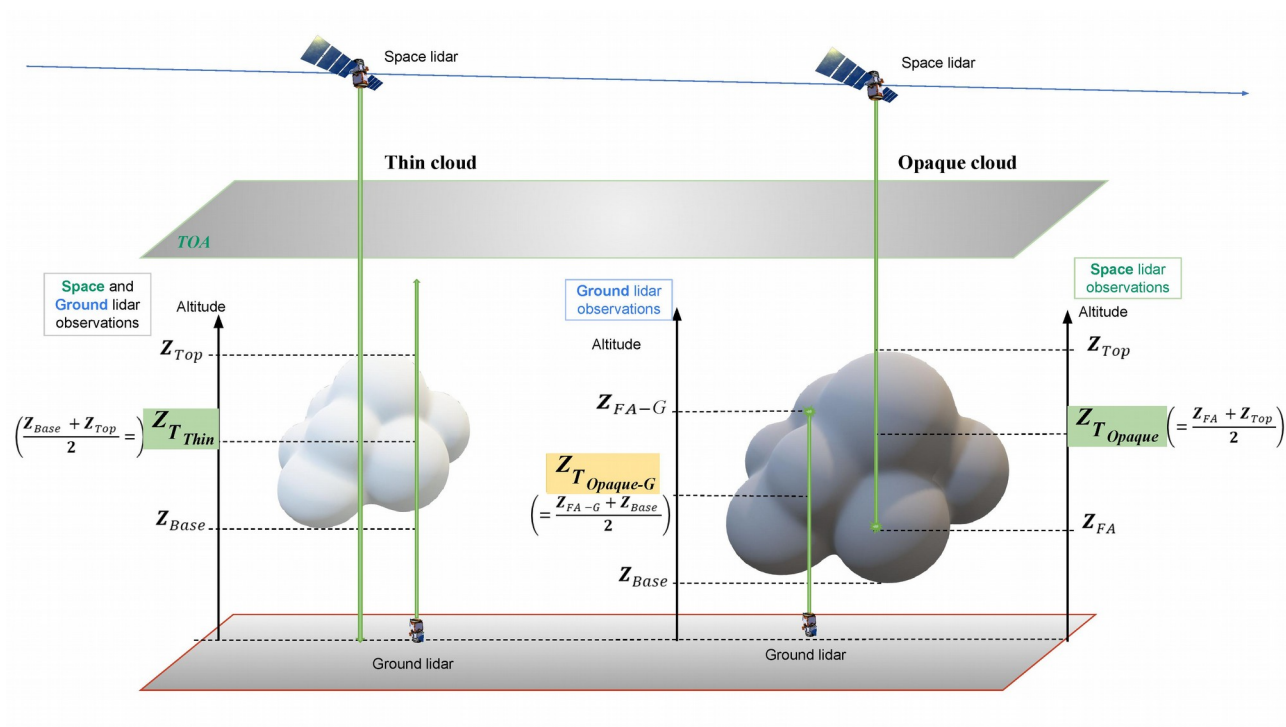
- 780 Resource for Studying Climate Change in the Presence of Internal Climate Variability, 96, 1333–1349,
<https://doi.org/10.1175/BAMS-D-13-00255.1>, 2015.
- King, J. C., Gadian, A., Kirchgassner, A., Kuipers Munneke, P., Lachlan-Cope, T. A., Orr, A., Reijmer, C., van den Broeke,
M. R., van Wessem, J. M., and Weeks, M.: Validation of the summertime surface energy budget of Larsen C Ice Shelf
(Antarctica) as represented in three high-resolution atmospheric models: Surface energy budget of Larsen C, J. Geophys.
- 785 Res. Atmos., 120, 1335–1347, <https://doi.org/10.1002/2014JD022604>, 2015.
- Kopp, R. E., Kemp, A. C., Bittermann, K., Horton, B. P., Donnelly, J. P., Gehrels, W. R., Hay, C. C., Mitrovica, J. X.,
Morrow, E. D., and Rahmstorf, S.: Temperature-driven global sea-level variability in the Common Era, Proc Natl Acad Sci
USA, 113, E1434–E1441, <https://doi.org/10.1073/pnas.1517056113>, 2016.
- Kwok, R. and Untersteiner, N.: The thinning of Arctic sea ice, Physics Today, 64, 36–41, <https://doi.org/10.1063/1.3580491>,
790 2011.
- Lacour, A., Chepfer, H., Miller, N. B., Shupe, M. D., Noel, V., Fettweis, X., Gallee, H., Kay, J. E., Guzman, R., and Cole, J.:
How Well Are Clouds Simulated over Greenland in Climate Models? Consequences for the Surface Cloud Radiative Effect
over the Ice Sheet, J. Climate, 31, 9293–9312, <https://doi.org/10.1175/JCLI-D-18-0023.1>, 2018.
- L’Ecuyer, T. S., Wood, N. B., Haladay, T., Stephens, G. L., and Stackhouse, P. W.: Impact of clouds on atmospheric heating
795 based on the R04 CloudSat fluxes and heating rates data set, J. Geophys. Res., 113, D00A15,
<https://doi.org/10.1029/2008JD009951>, 2008.
- L’Ecuyer, T. S., Hang, Y., Matus, A. V., and Wang, Z.: Reassessing the Effect of Cloud Type on Earth’s Energy Balance in
the Age of Active Spaceborne Observations. Part I: Top of Atmosphere and Surface, 32, 6197–6217, <https://doi.org/10.1175/JCLI-D-18-0753.1>, 2019.
- 800 Lindzen, R. S. and Choi, Y.-S.: The Iris Effect: A Review, Asia-Pacific J Atmos Sci, <https://doi.org/10.1007/s13143-021-00238-1>, 2021.
- Liu, Y., Ackerman, S. A., Maddux, B. C., Key, J. R., and Frey, R. A.: Errors in Cloud Detection over the Arctic Using a
Satellite Imager and Implications for Observing Feedback Mechanisms, 23, 1894–1907,
<https://doi.org/10.1175/2009JCLI3386.1>, 2010.
- 805 Loeb, N. G., S. Kato, K. Loukachine, and N. Manalo-Smith (2005), Angular distribution models for top-of-atmosphere
radiative flux estimation from the Clouds and the Earth’s Radiant Energy System instrument on the Terra satellite. Part I:
Methodology, J. Atmos. Ocean. Technol., 22(4), 338–351, doi:10.1175/JTECH1712.1.
- Loeb, N. G., S. Kato, K. Loukachine, N. Manalo-Smith, and D. R. Doelling (2007), Angular distribution models for top-of-
atmosphere radiative flux estimation from the Clouds and the Earth’s Radiant Energy System instrument on the Terra
810 satellite. Part II: Validation, J. Atmos. Ocean. Technol., 24(4), 564–584, doi:10.1175/jtech1983.1.
- Loeb, N. G., Wang, H., Cheng, A., Kato, S., Fasullo, J. T., Xu, K.-M., and Allan, R. P.: Observational constraints on
atmospheric and oceanic cross-equatorial heat transports: revisiting the precipitation asymmetry problem in climate models,
Clim Dyn, 46, 3239–3257, <https://doi.org/10.1007/s00382-015-2766-z>, 2016.
- Minnis, P., and Coauthors, 2010: CERES Edition 3 cloud retrievals. 13th Conf. on Atmospheric Radiation, Portland, OR,
815 Amer. Meteor. Soc., 5.4, <https://ams.confex.com/ams/pdfpapers/171366.pdf>.

- Mülmenstädt, J., Sourdeval, O., Henderson, D. S., L'Ecuyer, T. S., Unglaub, C., Jungandreas, L., Böhm, C., Russell, L. M., and Quaas, J.: Using CALIOP to estimate cloud-field base height and its uncertainty: the Cloud Base Altitude Spatial Extrapolator (CBASE) algorithm and dataset (1), <https://doi.org/10.1594/WDCC/CBASE>, 2018.
- 820 Norris, J. R., Allen, R. J., Evan, A. T., Zelinka, M. D., O'Dell, C. W., and Klein, S. A.: Evidence for climate change in the satellite cloud record, *Nature*, 536, 72–75, <https://doi.org/10.1038/nature18273>, 2016.
- Ohmura, A., Dutton, E. G., Forgan, B., Fröhlich, C., Gilgen, H., Hegner, H., Heimo, A., König-Langlo, G., McArthur, B., and Müller, G.: Baseline Surface Radiation Network (BSRN/WCRP): New precision radiometry for climate research, 79, 2115–2136, 1998.
- 825 Prata, A. J.: A new long-wave formula for estimating downward clear-sky radiation at the surface, *Q.J Royal Met. Soc.*, 122, 1127–1151, <https://doi.org/10.1002/qj.49712253306>, 1996.
- Ramanathan, V.: Interactions between ice-albedo, lapse-rate and cloud-top feedbacks: An analysis of the nonlinear response of a GCM climate model, 34, 1885–1897, 1977.
- Ramanathan, V., Cess, R. D., Harrison, E. F., Minnis, P., and Barkstrom, B. R.: Cloud-Radiative Forcing and Climate: Results from the Earth Radiation Budget Experiment, 243, 8, 1989.
- 830 Roesch, A., Wild, M., Ohmura, A., Dutton, E. G., Long, C. N., and Zhang, T.: Assessment of BSRN radiation records for the computation of monthly means, *Atmos. Meas. Tech.*, 4, 339–354, <https://doi.org/10.5194/amt-4-339-2011>, 2011.
- Rienecker, M. M., Todling, R., Bacmeister, J., Takacs, L., Liu, H. C., Gu, W., et al. (2008). The GEOS 5 data assimilation system: Documentation of versions 5.0.1, 5.1.0, and 5.2.0. NASA Technical Report Series on Global Modeling and Data Assimilation, Vol. 27, NASA/TM 2008 105606, 97 pp.
- 835 Rojas Muñoz, O. J., Chiriaco, M., Bastin, S., & Ringard, J. (2021). Estimation of the terms acting on local 1 h surface temperature variations in Paris region: the specific contribution of clouds. *Atmospheric Chemistry and Physics*, 21(20), 15699–15723.
- Rousset, C., Vancoppenolle, M., Madec, G., Fichefet, T., Flavoni, S., Barthélemy, A., Benshila, R., Chanut, J., Levy, C., Masson, S., and Vivier, F.: The Louvain-La-Neuve sea ice model LIM3.6: global and regional capabilities, *Geosci. Model Dev.*, 8, 2991–3005, <https://doi.org/10.5194/gmd-8-2991-2015>, 2015.
- 840 Rutan, D. A., Kato, S., Doelling, D. R., Rose, F. G., Nguyen, L. T., Caldwell, T. E., and Loeb, N. G.: CERES Synoptic Product: Methodology and Validation of Surface Radiant Flux, 32, 1121–1143, <https://doi.org/10.1175/JTECH-D-14-00165.1>, 2015.
- Sassen, K., and Z. Wang (2008), Classifying clouds around the globe with the CloudSat radar: 1-year of results, *Geophys. Res. Lett.*, 35, L04805, doi:10.1029/2007GL032591.
- 845 Scott, R. C., Lubin, D., Vogelmann, A. M., and Kato, S.: West Antarctic Ice Sheet Cloud Cover and Surface Radiation Budget from NASA A-Train Satellites, *J. Climate*, 30, 6151–6170, <https://doi.org/10.1175/JCLI-D-16-0644.1>, 2017.
- Shupe, M. D. and Intrieri, J. M.: Cloud Radiative Forcing of the Arctic Surface: The Influence of Cloud Properties, Surface Albedo, and Solar Zenith Angle, 17, 13, [https://doi.org/10.1175/1520-0442\(2004\)017<0616:CRFOTA>2.0.CO;2](https://doi.org/10.1175/1520-0442(2004)017<0616:CRFOTA>2.0.CO;2), 2004.
- 850 Shupe, M. D., Turner, D. D., Walden, V. P., Bennartz, R., Cadeddu, M. P., Castellani, B. B., Cox, C. J., Hudak, D. R., Kulie, M. S., Miller, N. B., Neely, R. R., Neff, W. D., and Rowe, P. M.: High and Dry: New Observations of Tropospheric and Cloud Properties above the Greenland Ice Sheet, 94, 169–186, <https://doi.org/10.1175/BAMS-D-11-00249.1>, 2013.

- Stephens, G. L., Vane, D. G., Tanelli, S., Im, E., Durden, S., Rokey, M., Reinke, D., Partain, P., Mace, G. G., Austin, R., L'Ecuyer, T., Haynes, J., Lebsock, M., Suzuki, K., Waliser, D., Wu, D., Kay, J., Gettelman, A., Wang, Z., and Marchand, R.: CloudSat mission: Performance and early science after the first year of operation, 113, <https://doi.org/10.1029/2008JD009982>, 2008.
- Stephens, G. L., Vane, D. G., Boain, R. J., Mace, G. G., Sassen, K., Wang, Z., Illingworth, A. J., O'connor, E. J., Rossow, W. B., Durden, S. L., Miller, S. D., Austin, R. T., Benedetti, A., Mitrescu, C., and the CloudSat Science Team: THE CLOUDSAT MISSION AND THE A-TRAIN: A New Dimension of Space-Based Observations of Clouds and Precipitation, *Bull. Amer. Meteor. Soc.*, 83, 1771–1790, <https://doi.org/10.1175/BAMS-83-12-1771>, 2002.
- Stroeve, J. C., Serreze, M. C., Holland, M. M., Kay, J. E., Maslanik, J., and Barrett, A. P.: The Arctic's rapidly shrinking sea ice cover: a research synthesis, *Climatic Change*, 110, 1005–1027, <https://doi.org/10.1007/s10584-011-0101-1>, 2012.
- Stubenrauch, C. J., Rossow, W. B., Kinne, S., Ackerman, S., Cesana, G., Chepfer, H., Girolamo, L. D., Getzewich, B., Guignard, A., Heidinger, A., Maddux, B. C., Menzel, W. P., Minnis, P., Pearl, C., Platnick, S., Poulsen, C., Riedi, J., Sun-Mack, S., Walther, A., Winker, D., Zeng, S., and Zhao, G.: ASSESSMENT OF GLOBAL CLOUD DATASETS FROM SATELLITES, 20, 2013.
- Stubenrauch W. B. Rossow, and S. Kinne, 2012: Assessment of global cloud datasets from satellites: A project of the World Climate Research Programme Global Energy and Water Cycle Experiment (GEWEX) Radiation Panel. WCRP Rep. 23/2012, 176 pp. [Available online at www.wcrp-climate.org/documents/GEWEX_Cloud_Assessment_2012.pdf.]
- Taylor, K. E., Crucifix, M., Braconnot, P., Hewitt, C. D., Doutriaux, C., Broccoli, A. J., Mitchell, J. F. B., and Webb, M. J.: Estimating Shortwave Radiative Forcing and Response in Climate Models, 20, 2530–2543, <https://doi.org/10.1175/JCLI4143.1>, 2007.
- Vaillant de Guélis, T., Chepfer, H., Noel, V., Guzman, R., Dubuisson, P., Winker, D. M., and Kato, S.: The link between outgoing longwave radiation and the altitude at which a spaceborne lidar beam is fully attenuated, *Atmos. Meas. Tech.*, 10, 4659–4685, <https://doi.org/10.5194/amt-10-4659-2017>, 2017a.
- Vaillant de Guélis, T., Chepfer, H., Noel, V., Guzman, R., Winker, D. M., and Plougonven, R.: Using Space Lidar Observations to Decompose Longwave Cloud Radiative Effect Variations Over the Last Decade: Space lidar decomposes LWCRE variations, *Geophys. Res. Lett.*, 44, 11,994-12,003, <https://doi.org/10.1002/2017GL074628>, 2017b.
- Vaillant de Guélis, T., Chepfer, H., Guzman, R., Bonazzola, M., Winker, D. M., and Noel, V.: Space lidar observations constrain longwave cloud feedback, *Sci Rep*, 8, 16570, <https://doi.org/10.1038/s41598-018-34943-1>, 2018.
- Van Tricht, K., Lhermitte, S., Lenaerts, J. T. M., Gorodetskaya, I. V., L'Ecuyer, T. S., Noël, B., van den Broeke, M. R., Turner, D. D., and van Lipzig, N. P. M.: Clouds enhance Greenland ice sheet meltwater runoff, *Nat Commun*, 7, 10266, <https://doi.org/10.1038/ncomms10266>, 2016.
- Vaughan, M., Pitts, M., Trepte, C., Winker, D., Detweiler, P., Garnier, A., Getzewich, B., Hunt, W., Lambeth, J., Lee, K.-P., Lucker, P., Murray, T., Rodier, S., Tremas, T., Bazureau, A. and Pelon, J. (2018): Cloud-Aerosol LIDAR Infrared Pathfinder Satellite Observations (CALIPSO) data management system data products catalog, Release 4.30, NASA Langley Research Center Document PC-SCI-503, (available online at https://www-calipso.larc.nasa.gov/products/CALIPSO_DPC_Rev4x30.pdf).

- Winker, D. M., Pelon, J., Jr, J. A. C., Ackerman, S. A., Charlson, R. J., Colarco, P. R., Flamant, P., Fu, Q., Hoff, R. M.,
890 Kittaka, C., Kubar, T. L., Treut, H. L., McCormick, M. P., Mégie, G., Poole, L., Powell, K., Treppe, C., Vaughan, M. A., and
Wielicki, B. A.: A Global 3D View of Aerosols and Clouds, 20, 2010.
- Zelinka, M. D., Klein, S. A., and Hartmann, D. L.: Computing and Partitioning Cloud Feedbacks Using Cloud Property
Histograms. Part I: Cloud Radiative Kernels, J. Climate, 25, 3715–3735, <https://doi.org/10.1175/JCLI-D-11-00248.1>, 2012a.
- 895 Zelinka, M. D., Klein, S. A., and Hartmann, D. L.: Computing and Partitioning Cloud Feedbacks Using Cloud Property
Histograms. Part II: Attribution to Changes in Cloud Amount, Altitude, and Optical Depth, J. Climate, 25, 3736–3754,
<https://doi.org/10.1175/JCLI-D-11-00249.1>, 2012b.

900



905

Figure 1: Schematic of cloud altitudes seen from space lidar and from a ground based lidar in an atmospheric column containing thin cloud only (left) and opaque cloud only (right). The altitudes used to retrieve the surface LW CRE from CALIPSO-GOCCP are reported in green.

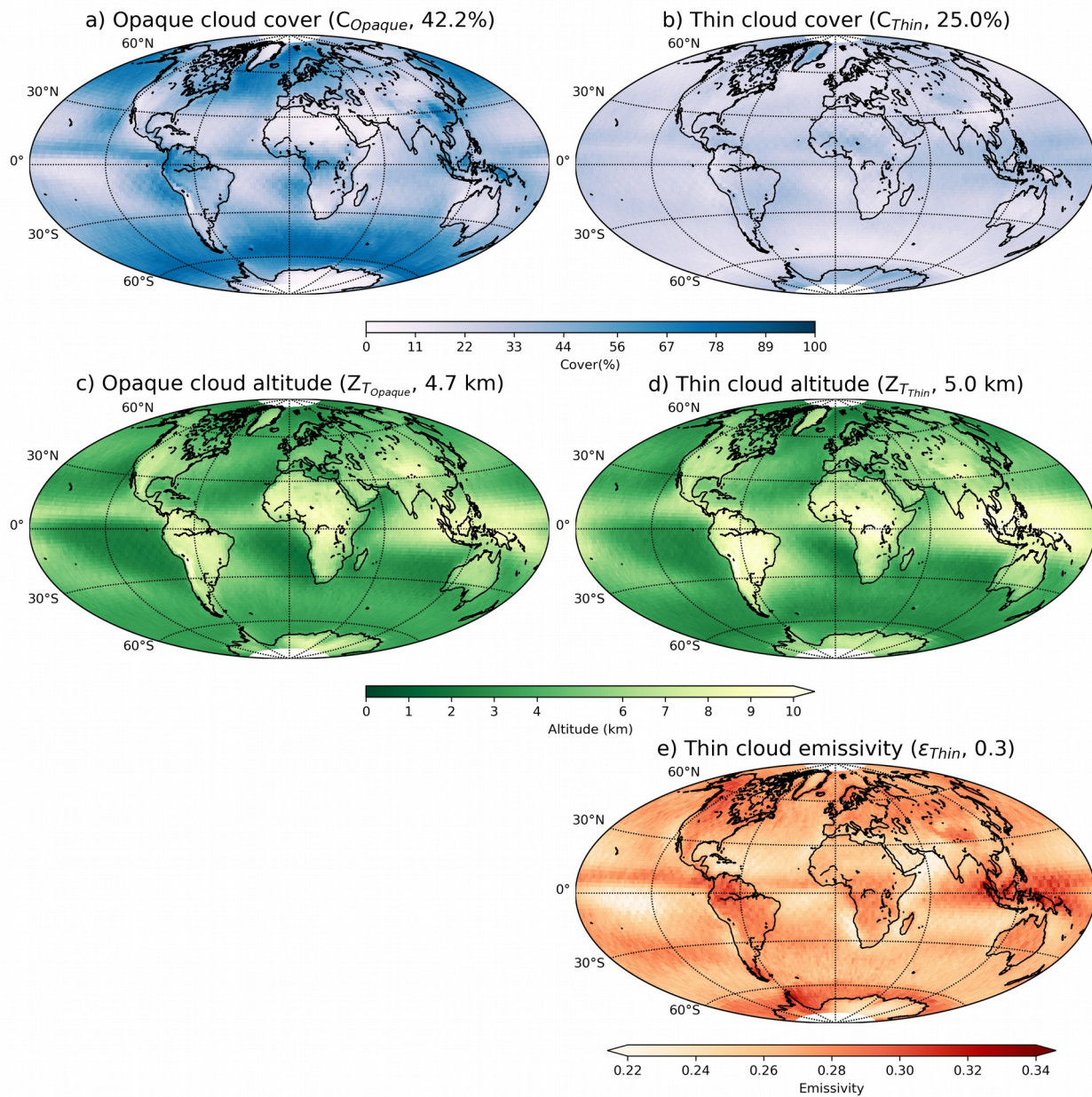
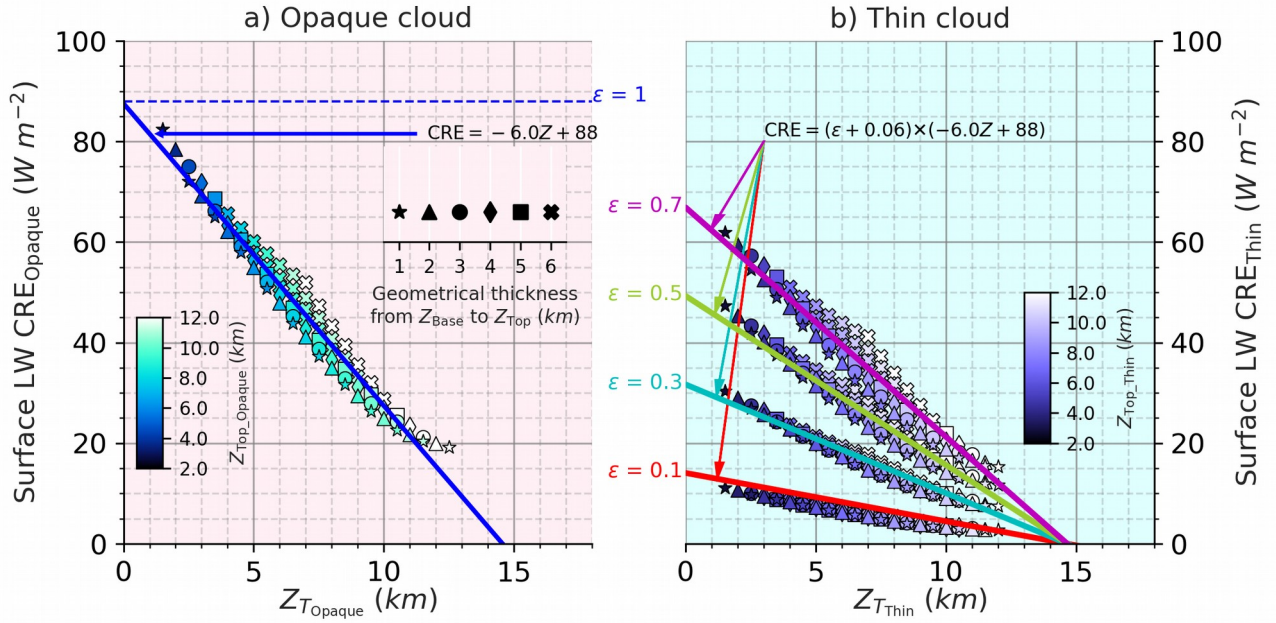


Figure 2: Maps of a) opaque cloud cover C_{Opaque} , b) thin cloud cover C_{Thin} , c) opaque cloud altitude $Z_{T_{Opaque}}$, d) thin cloud altitude $Z_{T_{Thin}}$ and e) thin cloud emissivity ϵ_{Thin} . Global mean are reported in parentheses. Build from CALIPSO-GOCCP v3.1.2 over 2008–2020.



915 Figure 3: Linear relationships derived from 1D radiative transfer computations between the surface LW CRE and the cloud
altitude for a single overcast column containing: a) an opaque cloud above a thin cloud, both moving in altitude, and b) a thin
cloud of emissivity 0.1 (red), 0.3 (cyan), 0.5 (green) and 0.7 (pink). These linear relationships (solid lines) are derived from direct
radiative transfer computations (dots). Each dot represents the result of one radiative transfer computation. The color of dots
represents the cloud top altitude (2 km [dark] – 13 km [bright]) and the size of dots the geometrical thickness from the cloud base
to cloud top (1 km [small] – 6 km and above [large]). The atmospheric state is taken from ERA Interim reanalysis for January at a
920 latitude of 39° N over ocean.

Radiative transfer simulations over ocean : Tropics

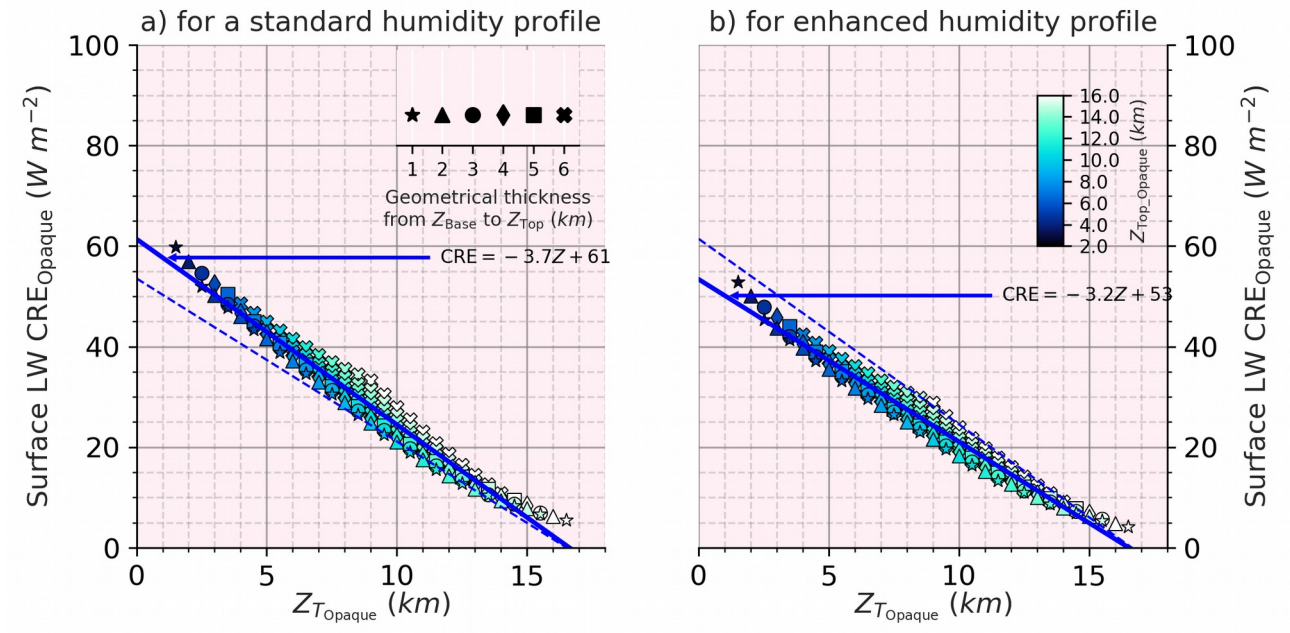
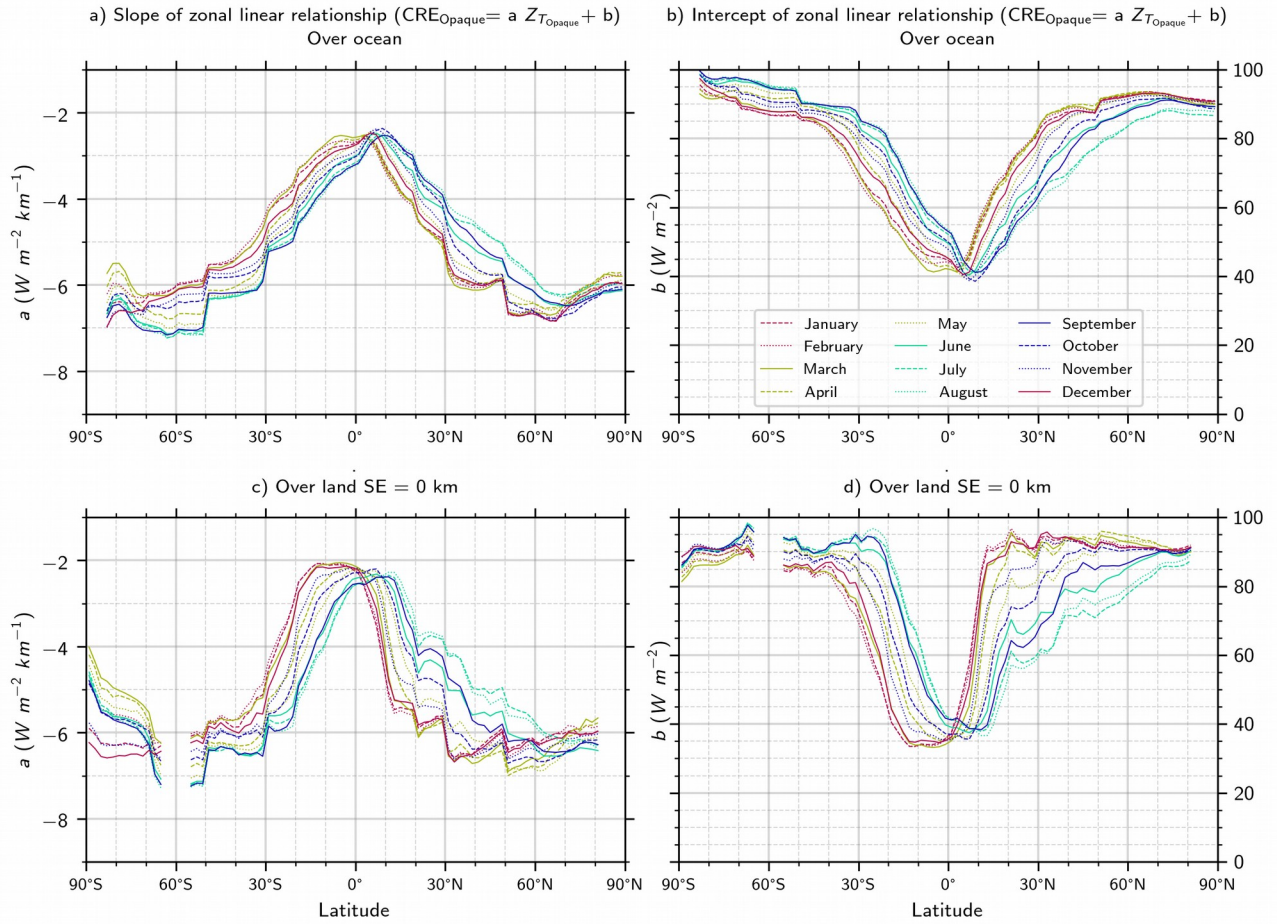


Figure 4: Same as Fig. 3a for: a) a standard humidity profile and b) enhanced humidity profile. Both in the tropics [30° S–30° N].



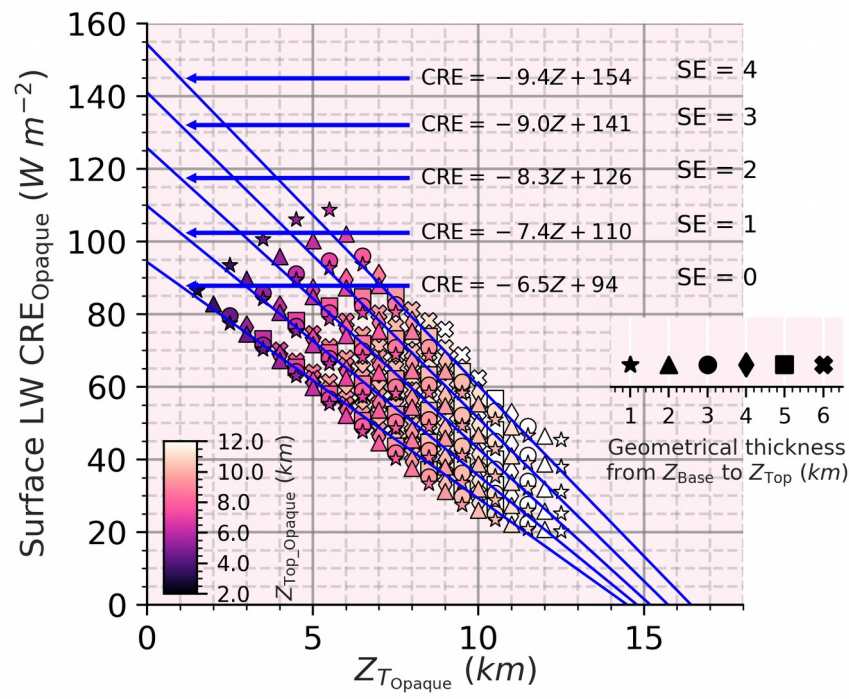
930 **Figure 5: Coefficients of the linear relationships derived from 1D radiative transfer computations between the surface LW CRE and the cloud altitude for all latitudes and seasons : a) the slope of the relationships over ocean, b) intercept of the relationships over ocean, c) the slope of the relationships over land and, d) intercept of the relationships over land.**

935

Radiative transfer simulations for different surface elevations
Opaque cloud over land : January, Latitude 39° N

940

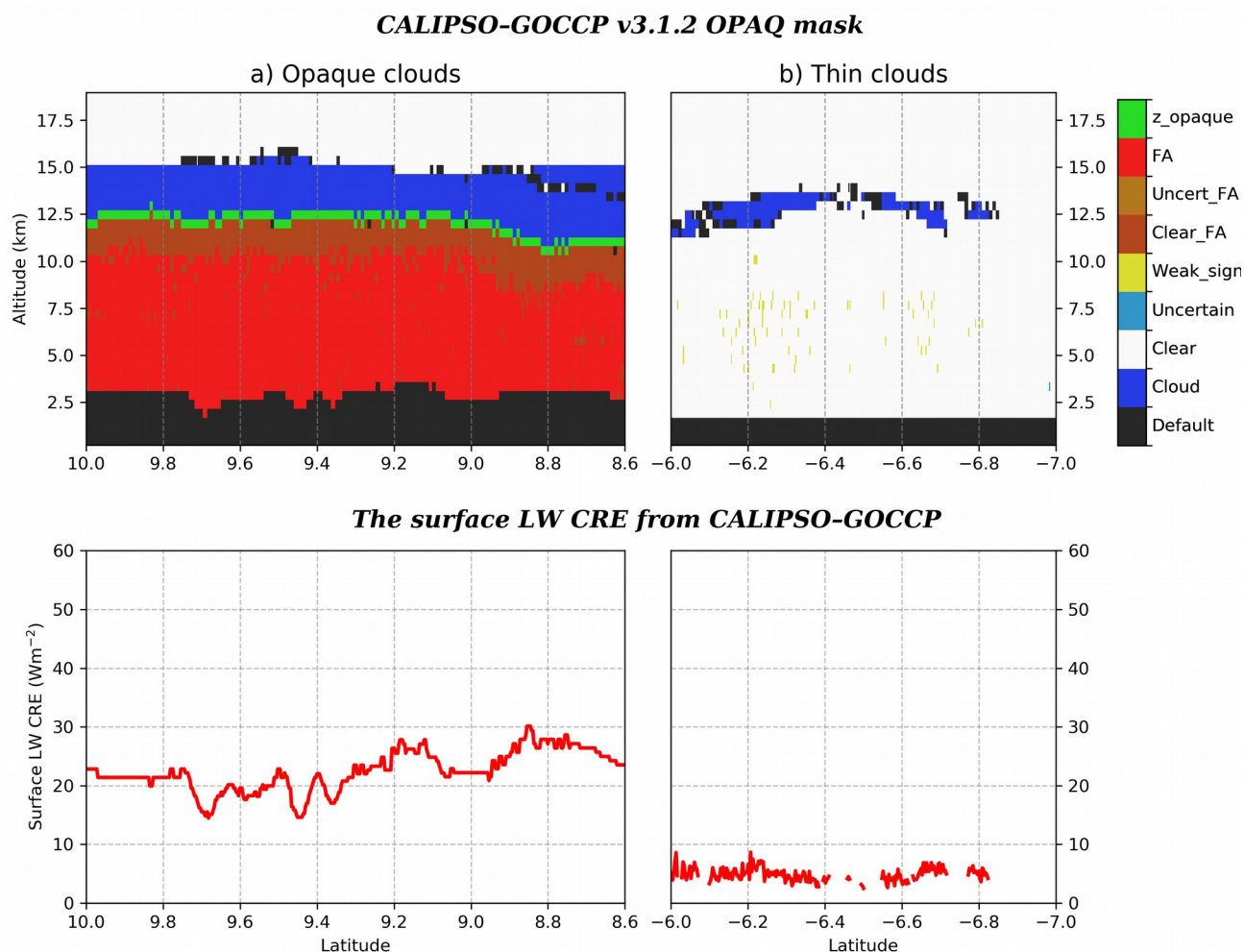
945



950

Figure 6: Sensitivity of the surface LW opaque CRE to the surface elevation (SE) : Same as Fig. 3a but over land and for different values of SE : SE = 0 (sea level), SE = 1 km, SE = 2 km, SE = 3 km, SE = 4 km for January at a latitude of 39° N.

955



960 **Figure 7: Pieces of CALIPSO orbit passing over Africa the 11th August 2010 at 23 h 02 min 38 sec. Opaque clouds (left column) and, thin clouds (right column). Top line) Vertical feature mask from the product CALIPSO-GOCCP-OPAQ (Guzman et al., 20017), the black areas below 4km correspond to land. Bottom line) Surface LW CRE from CALIPSO-GOCCP.**

965

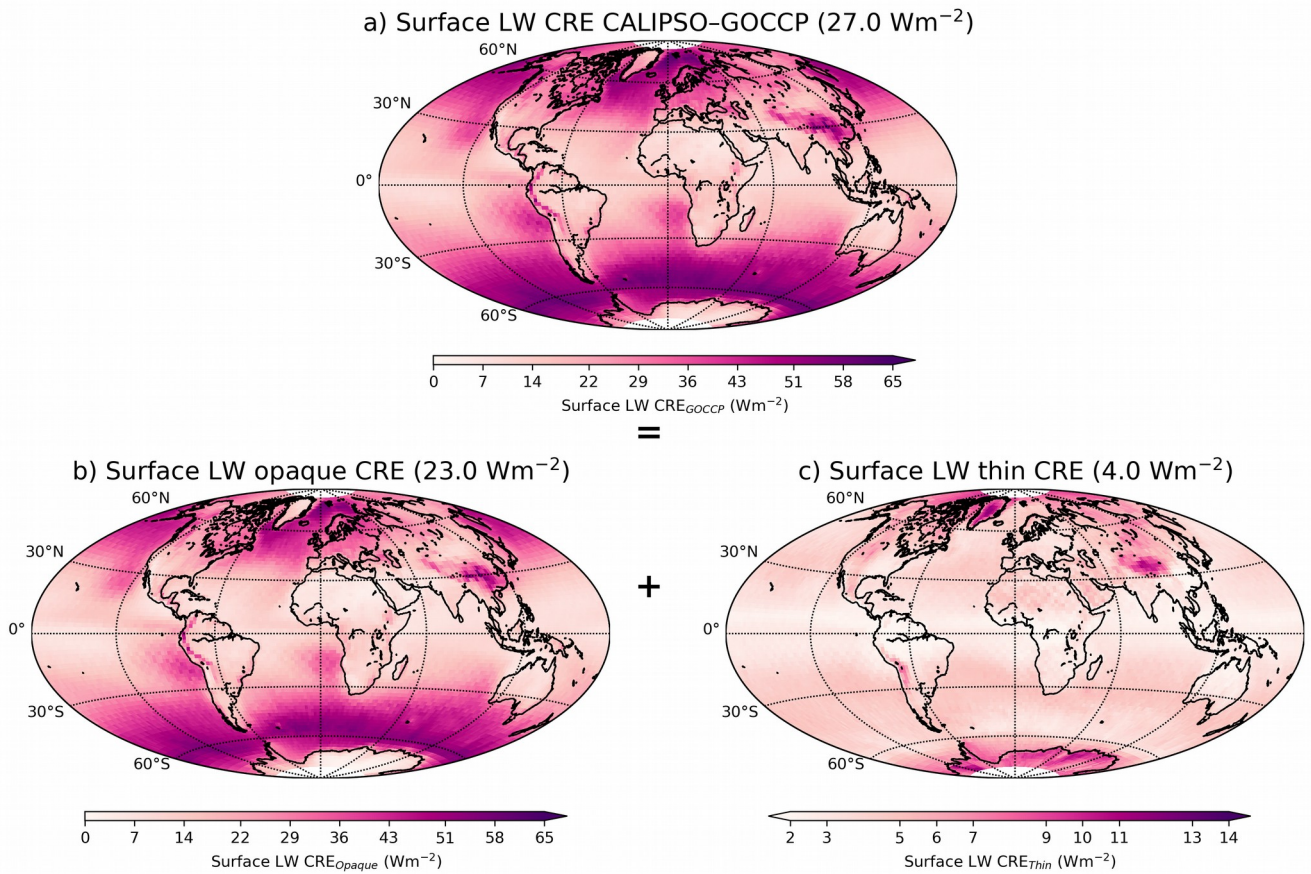


Figure 8: Maps of the surface LW CRE: a) all clouds, b) opaque clouds, and c) thin clouds. These surface LW CRE are built from CALIPSO–GOCCP v3.1.2 dataset (Fig. 2) and radiative transfer computations (Figs. 4–7, A1). The surface LW CRE is averaged over 2008–2020. Note that the color scale is different in c).

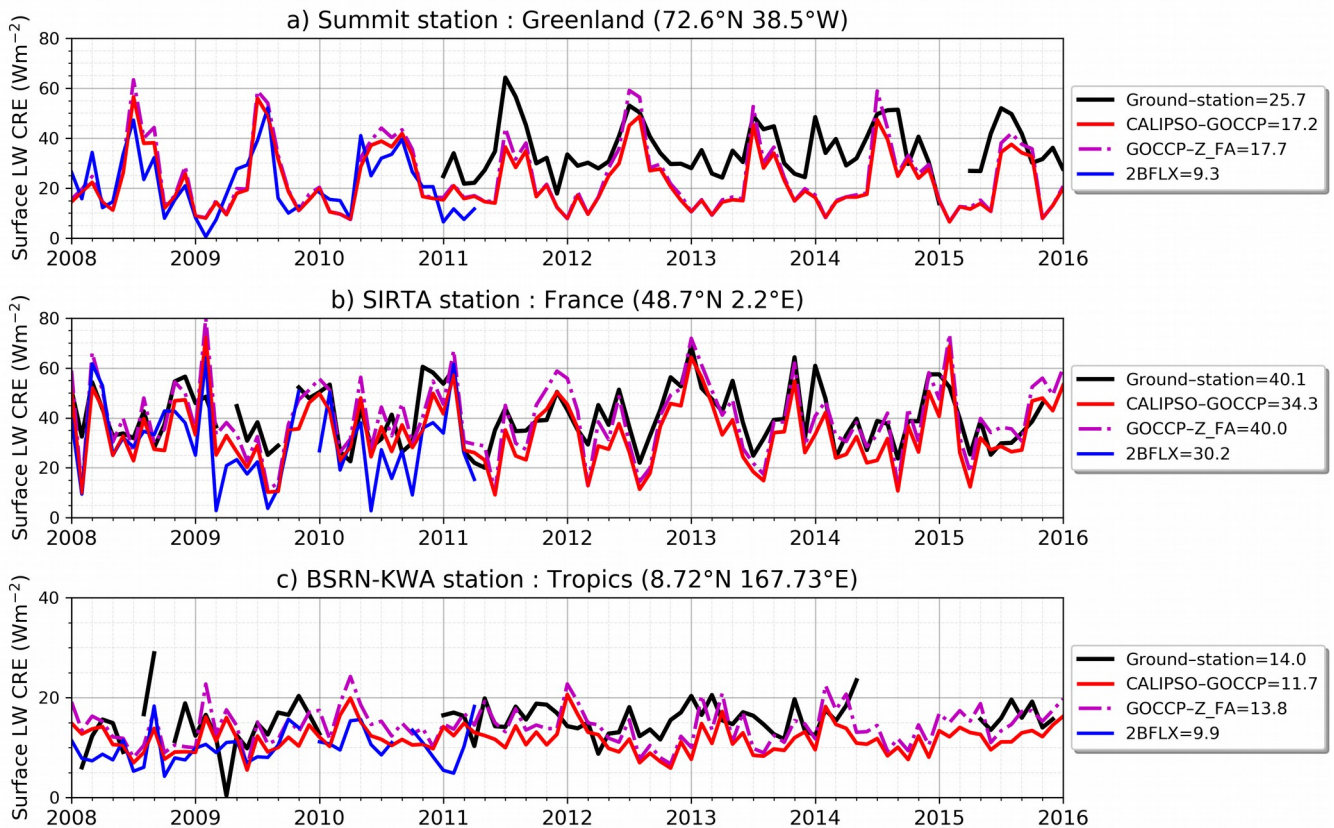
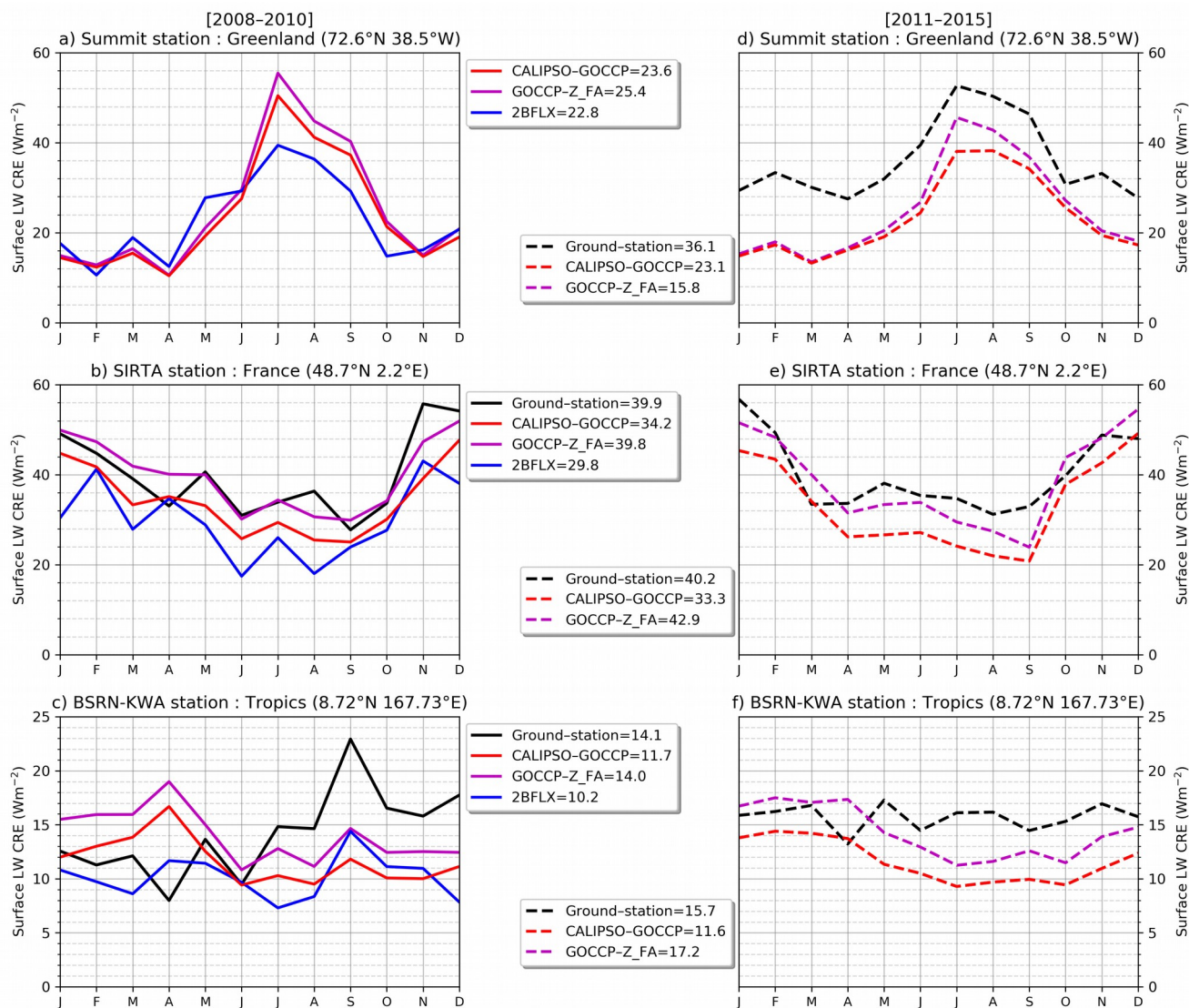


Figure 9: Comparisons between the surface LW CRE derived from ground-stations measurements and from satellites in three locations : a) polar region at Greenland Summit site, b) mid-latitudes at SIRTa site, and c) tropics at KWA site. Mean values reported in the legend are computed only over the time period when all products are available e.g. only for months (JFMA 2011) for Greenland Summit mean values. The locations of the three sites are reported in Fig. 14. Note that the y-axis scale is different in each subplot.



985 **Figure 10: Same as Fig. 9 but in mean seasonal cycles. Left column corresponds to 2008–2010 and right column corresponds to 2011–2015. Note that the y-axis scale is different in each subplot.**

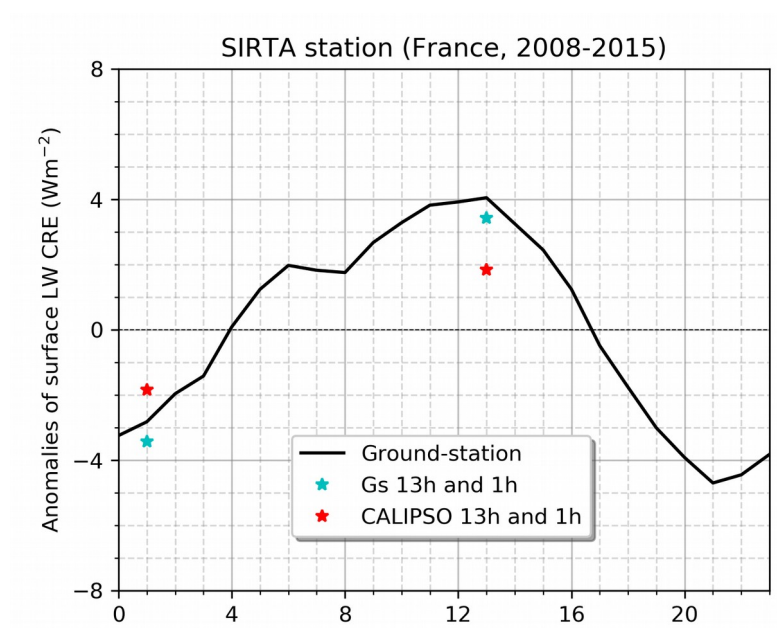


Figure 11: Same as Fig. 9b but in the anomaly of diurnal cycles over 2008–2015.

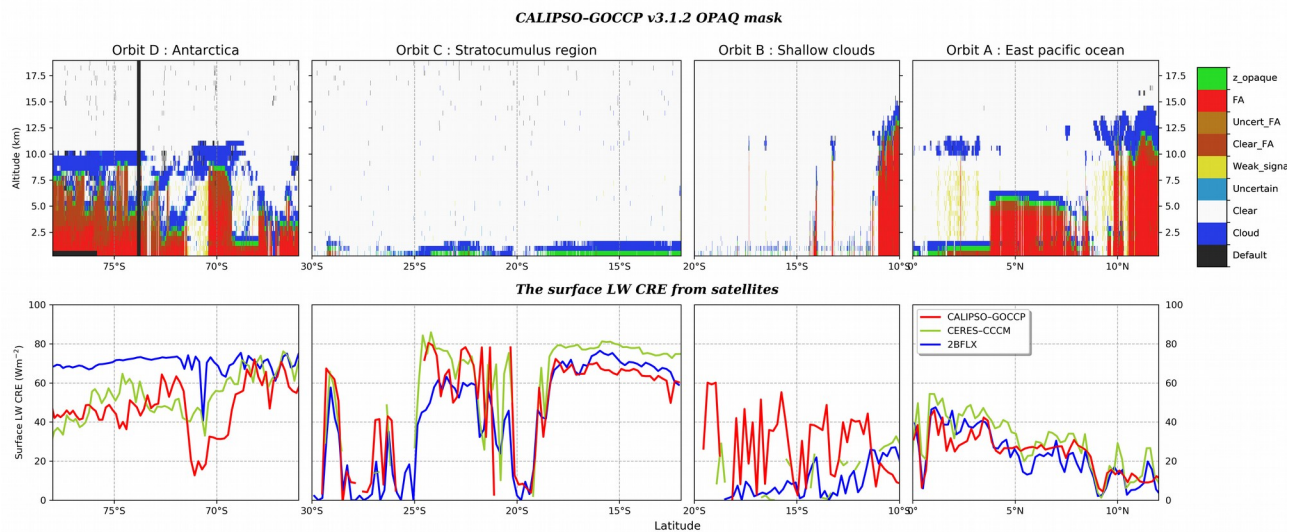


Figure 12: Pieces of CALIPSO orbits passing over: A) east Pacific ocean the 17th October at 8 h 21 min 48 sec, B) shallow clouds region in the Pacific ocean the 5th April at 12 h 55 min 34 sec, C) stratocumulus region the 13th July at 6 h 48 min 37 sec and D) Antarctica the 21st September at 3 h 9 min 46 sec all for the year 2008. Top line) Vertical feature mask from the product CALIPSO–GOCCP–OPAQ (Guzman et al., 20017), the black areas below 4km correspond to land. Bottom line) Surface LW CRE of the three satellite products. The location of the pieces of orbit (A, B, C, D) are reported in Figure 14

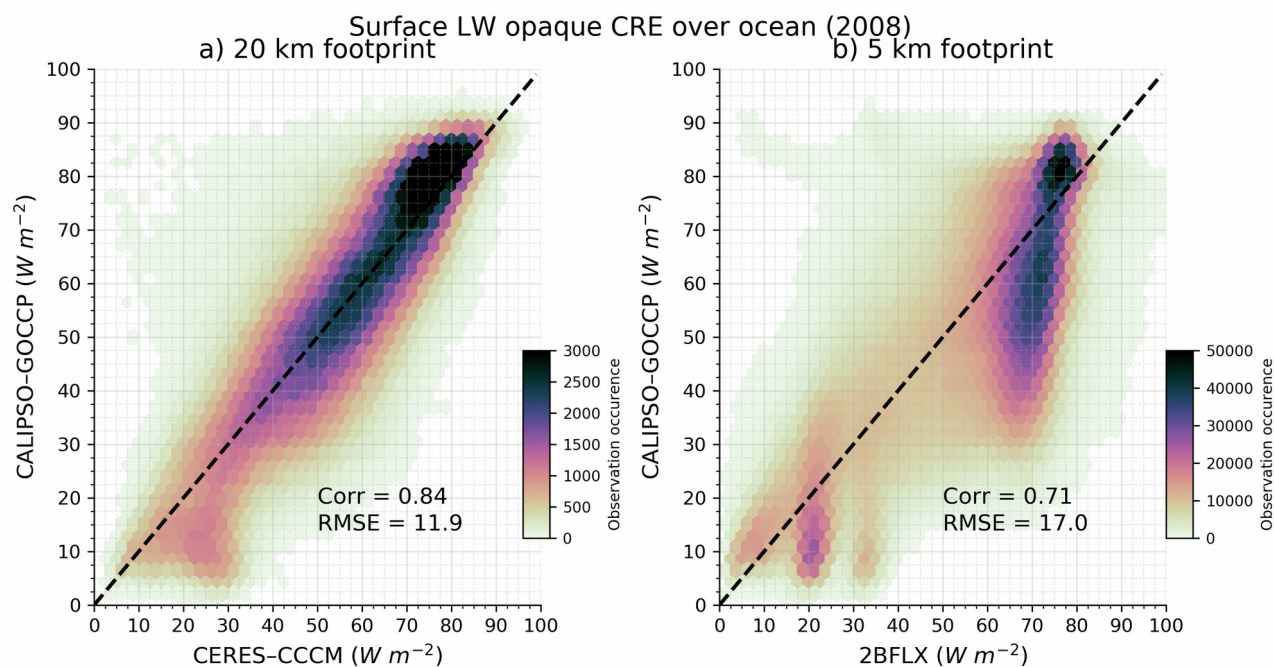


Figure 13: Instantaneous collocated surface LW opaque CRE at footprint scale: a) CALIPSO–GOCCP as a function of CERES–CCCM , b) CALIPSO–GOCCP as a function of 2BFLX. We only consider CERES (CloudSat) footprints where all CALIPSO footprints falling within the CERES (CloudSat) footprints are opaque and which contain at least 40 (10) profiles. Based on collocated observations over ocean in 2008.

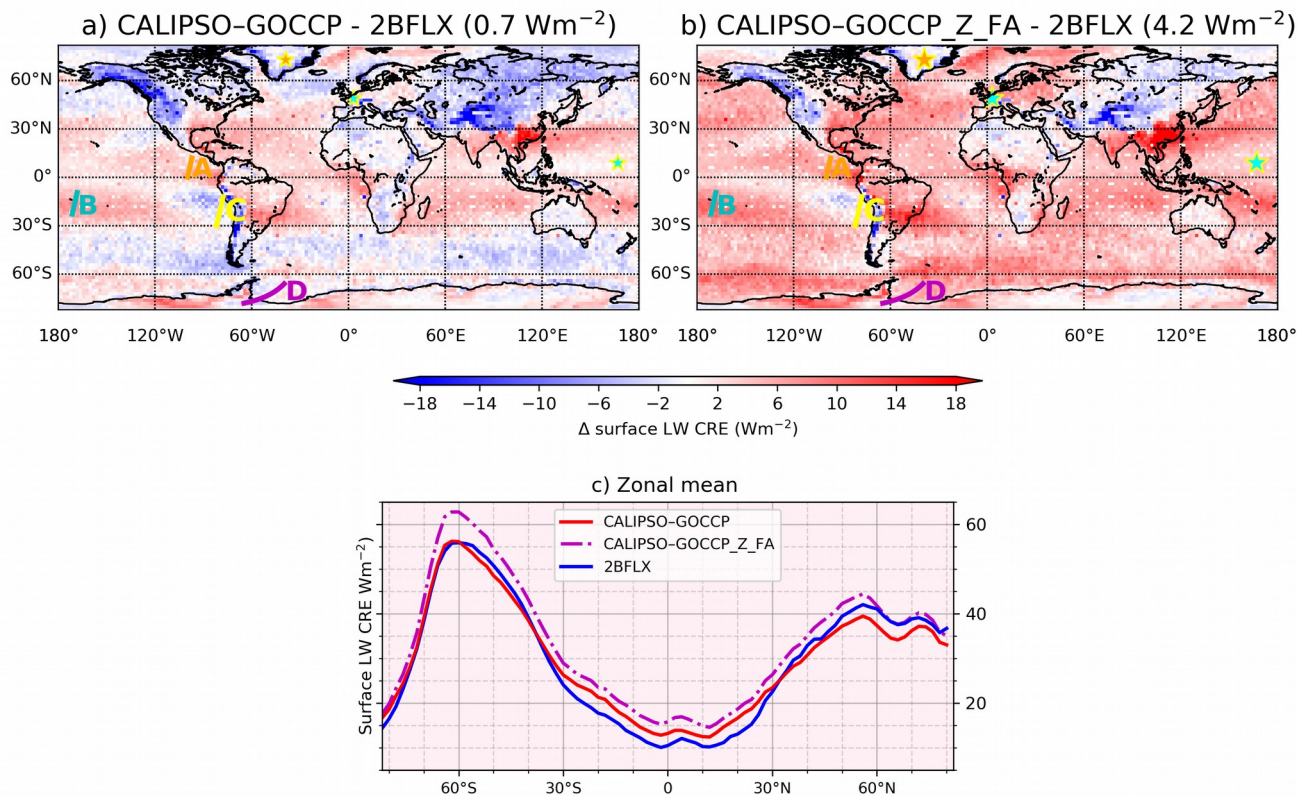
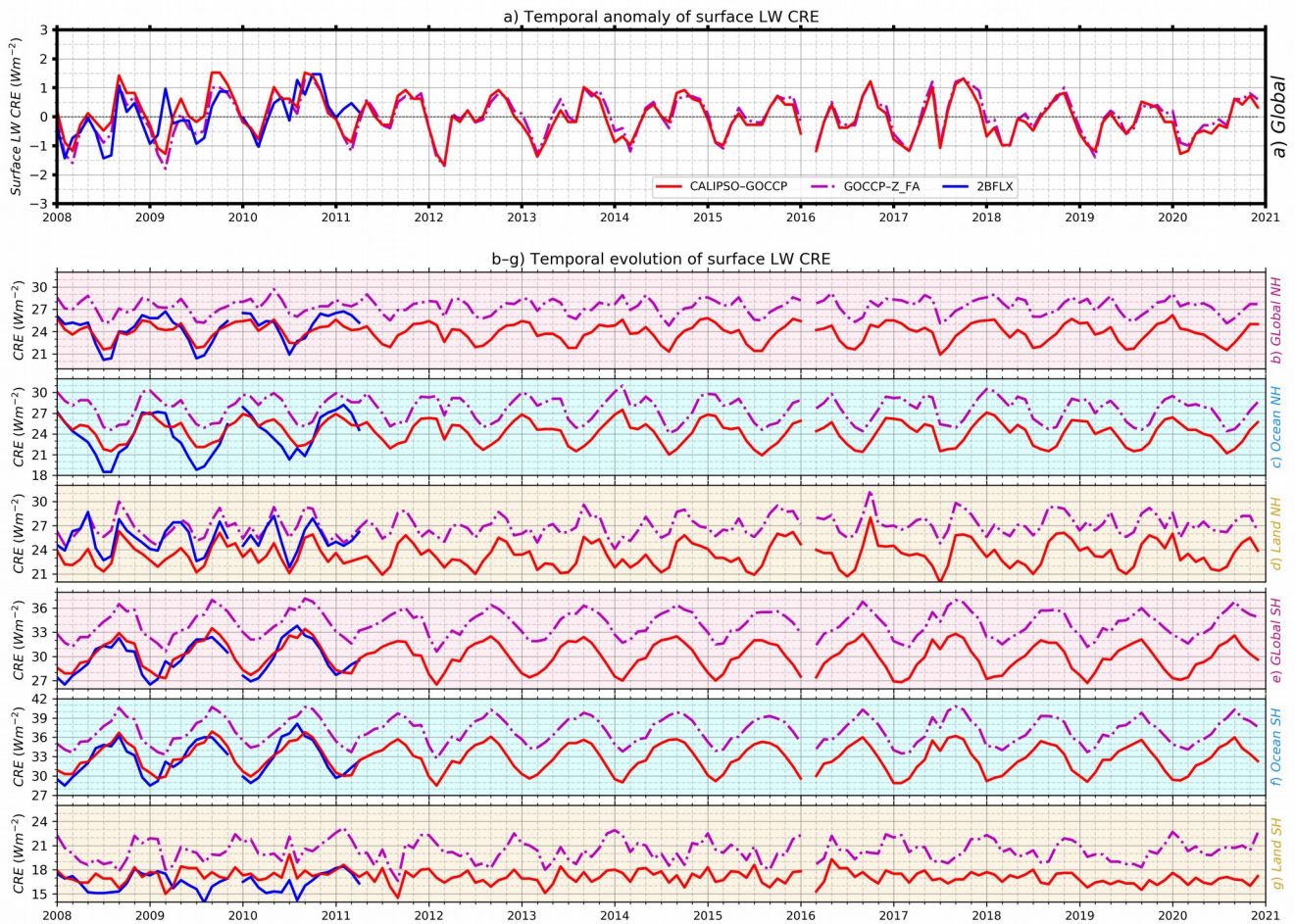
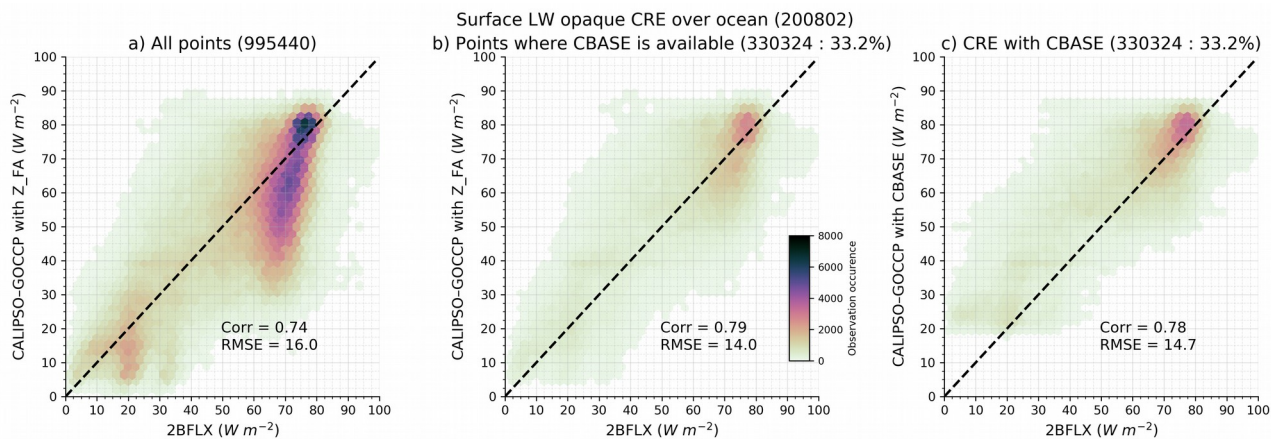


Figure 14: Maps of differences in the surface LW CRE a) CALIPSO-GOCCP minus 2BFLX, b) GOCCP_Z_FA minus 2BFLX, and c) zonal means of the two satellite products. Data are averaged over 2008–2010. Locations of the three ground-based sites and pieces of orbits are reported in the maps.



1030 **Figure 15: a) Time series of global surface LW CRE anomalies. b-f) Time series of surface LW CREs over all NH, ocean NH, land NH, all SH, ocean SH, land SH. In a) the anomaly is defined as the global average for each month of each product minus its own average over the whole time serie. Note that the y-axis scale is different in each subplot.**

1035



1040

Figure 16: Surface LW CRE derived from CALIPSO-GOCCP as a function of the one derived from 2BFLX. a) CALIPSO-GOCCP surface LW CRE (y axis) computed using the altitude of full lidar attenuation b) same as (a) but containing only the sub-sample of CALIPSO profiles where cloud base-height values are available from Mülmenstädt et al. (2018) c) same as b) but the CALIPSO-GOCCP surface LW CRE is computed using the cloud base-height values from Mülmenstädt et al. (2018) instead of the altitude of lidar full attenuation. The color scale indicates the number of occurrences at 5km resolution (footprint scale of CloudSat) over ocean in February 2008.

1045

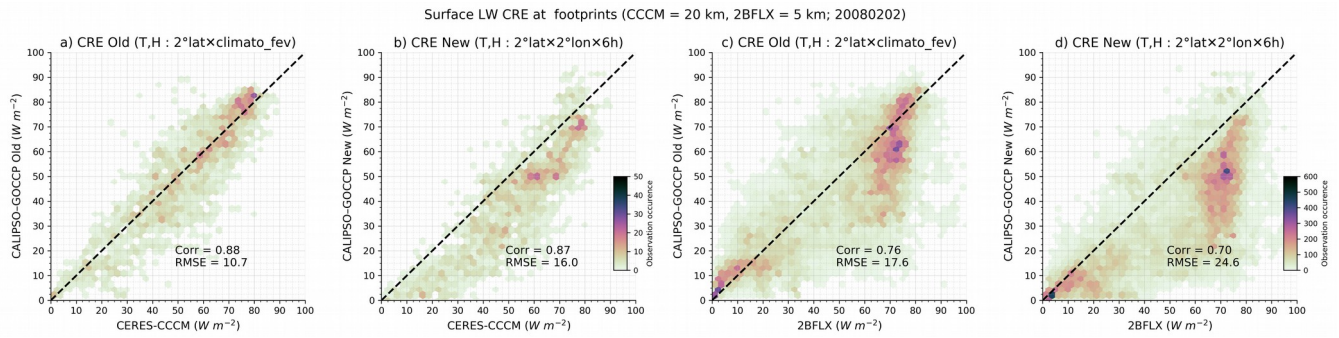
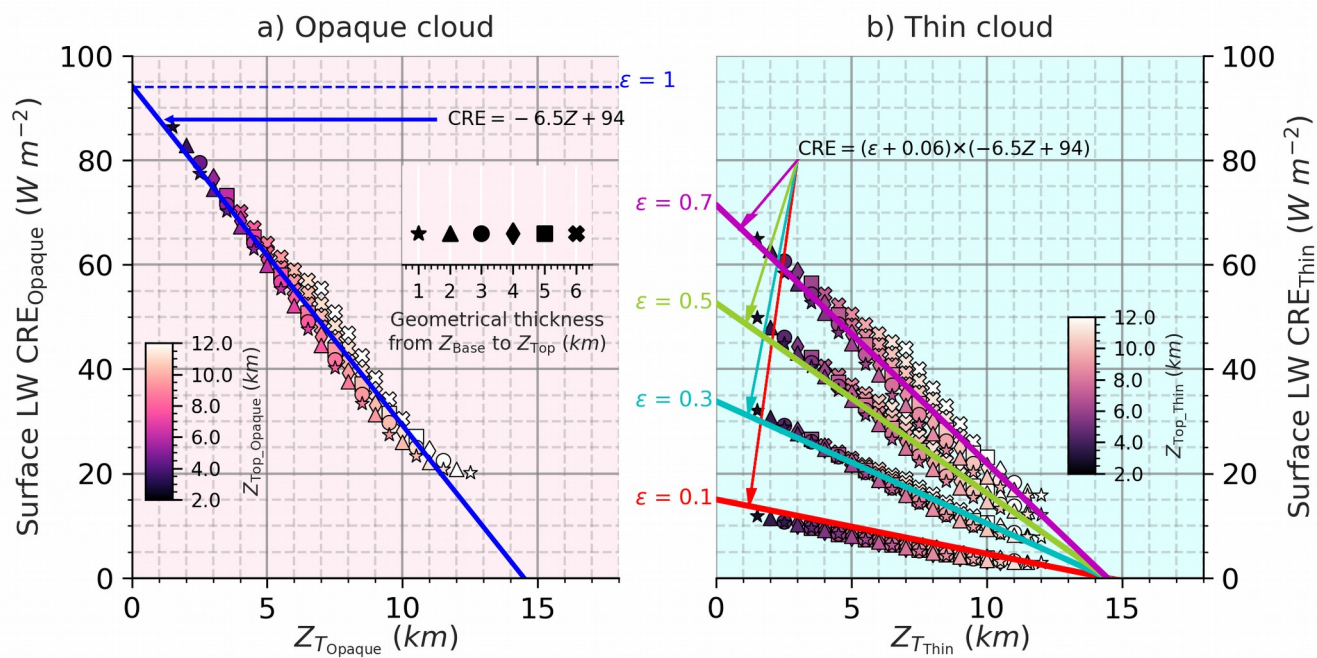


Figure 17: Distribution of the Surface LW CRE: a) CALIPSO-GOCCP retrieved using monthly mean temperature/humidity profiles as a function of CERES-CCCM with data at 20 km resolution (CERES SSF footprint), b) same as (a) but CALIPSO-GOCCP retrieved using sub-daily temperature/humidity profiles, c,d) same as (a,b) but for 2BFLX instead of CERES-CCCM and using data at 5 km resolution (CloudSat resolution).

Radiative transfer simulations over land : January, Latitude 39° N



1055 **Figure A1:** Same as Fig. 3 but over land.

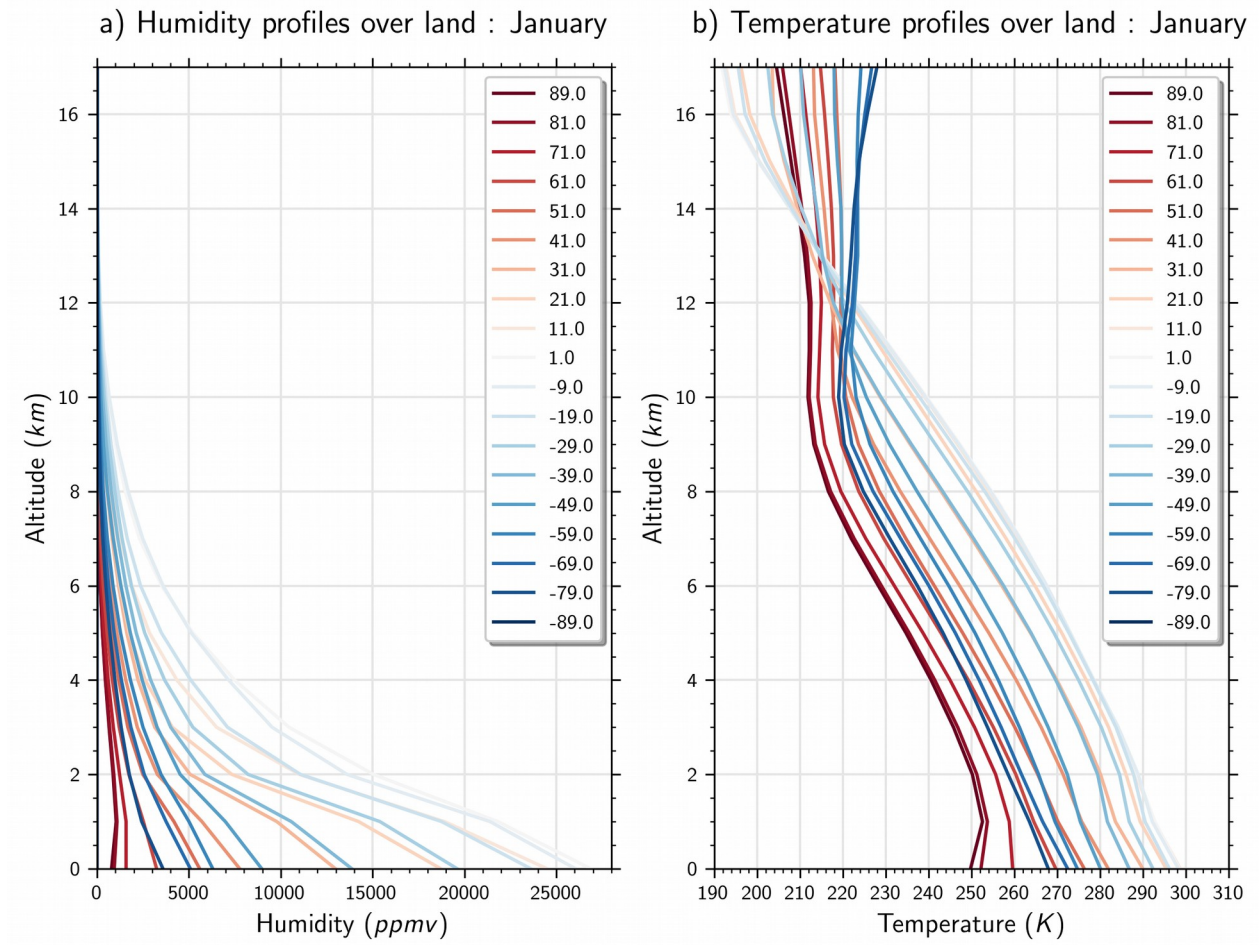


Figure A2: Example of ERA Interim atmospheric profiles taken over land in January and averaged over 10° latitude bands.

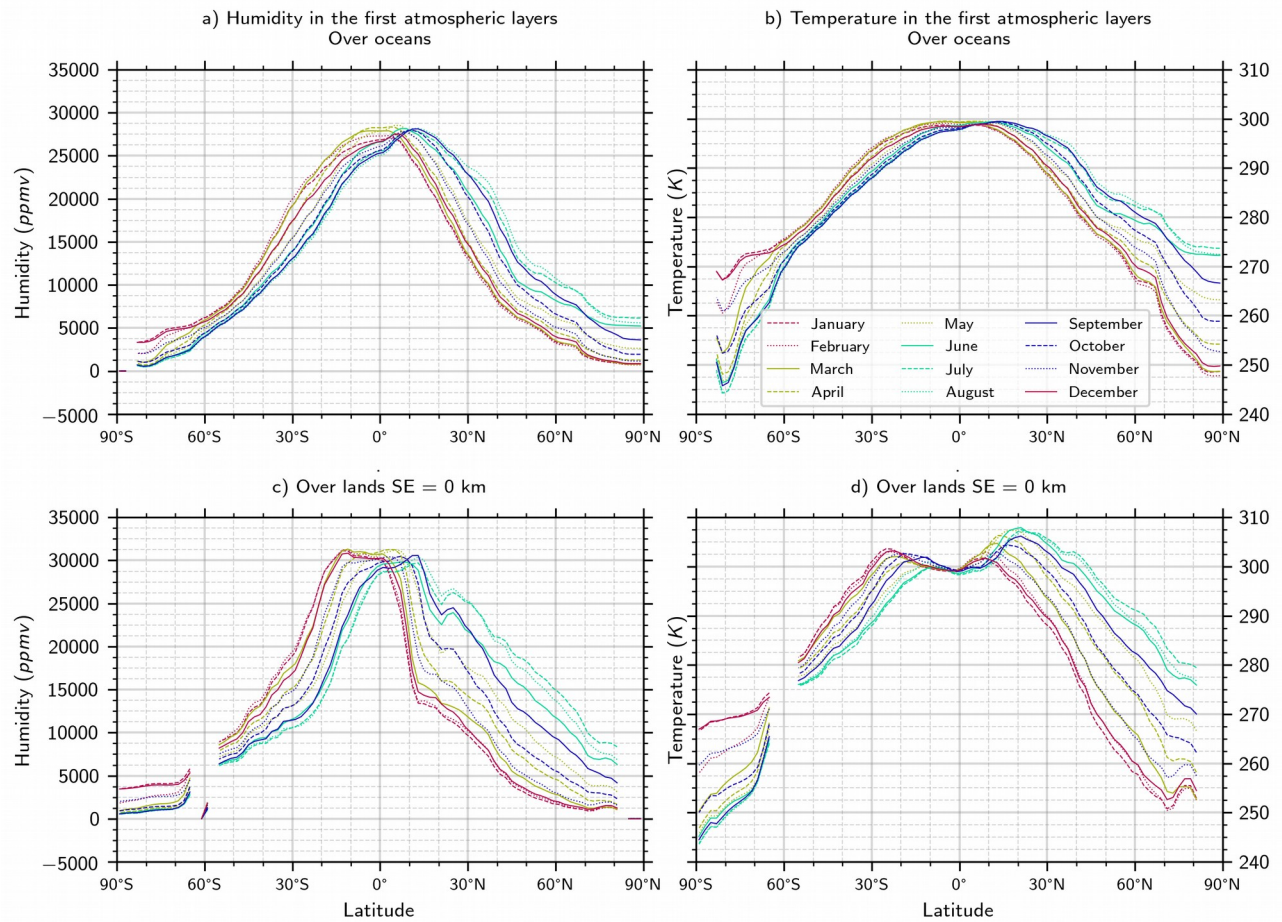


Figure A3: Seasonal and zonal variations of the temperature and humidity in the near surface atmospheric layer ($Z < 1$ km) from ERA Interim.

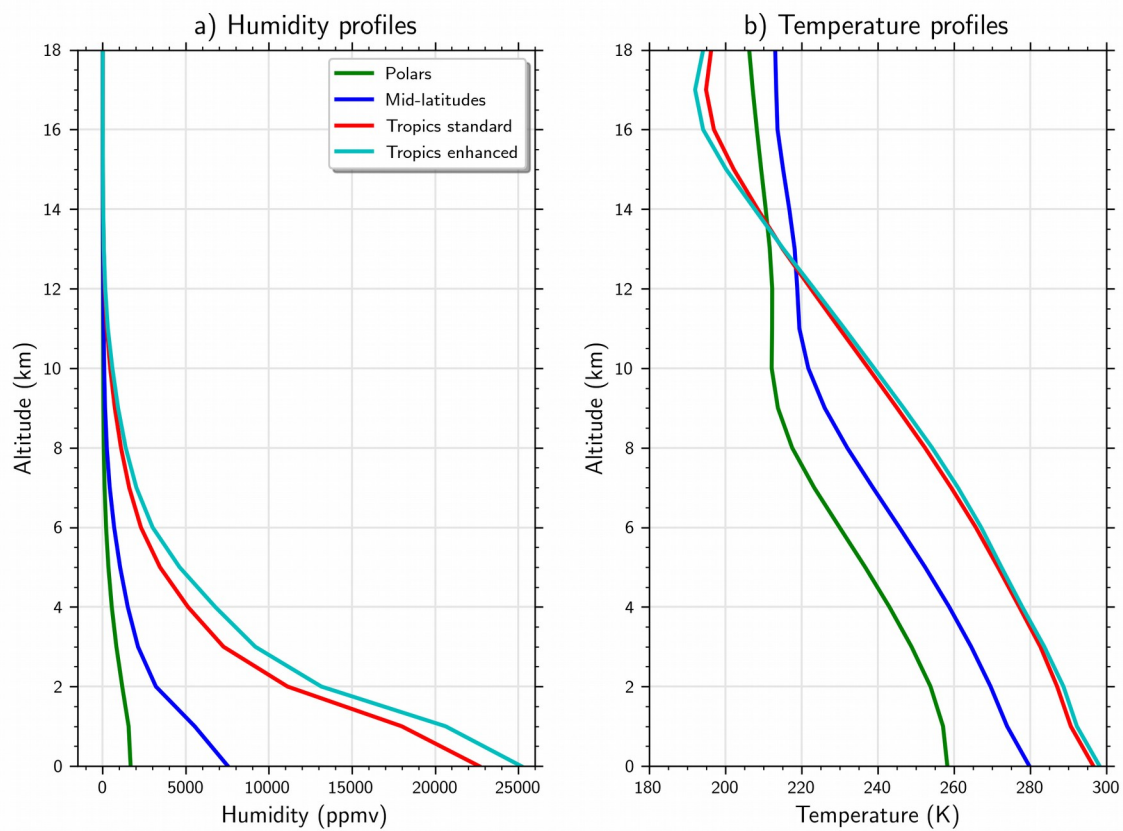


Figure A4: Annual mean profiles of temperature and humidity from ERA Interim.

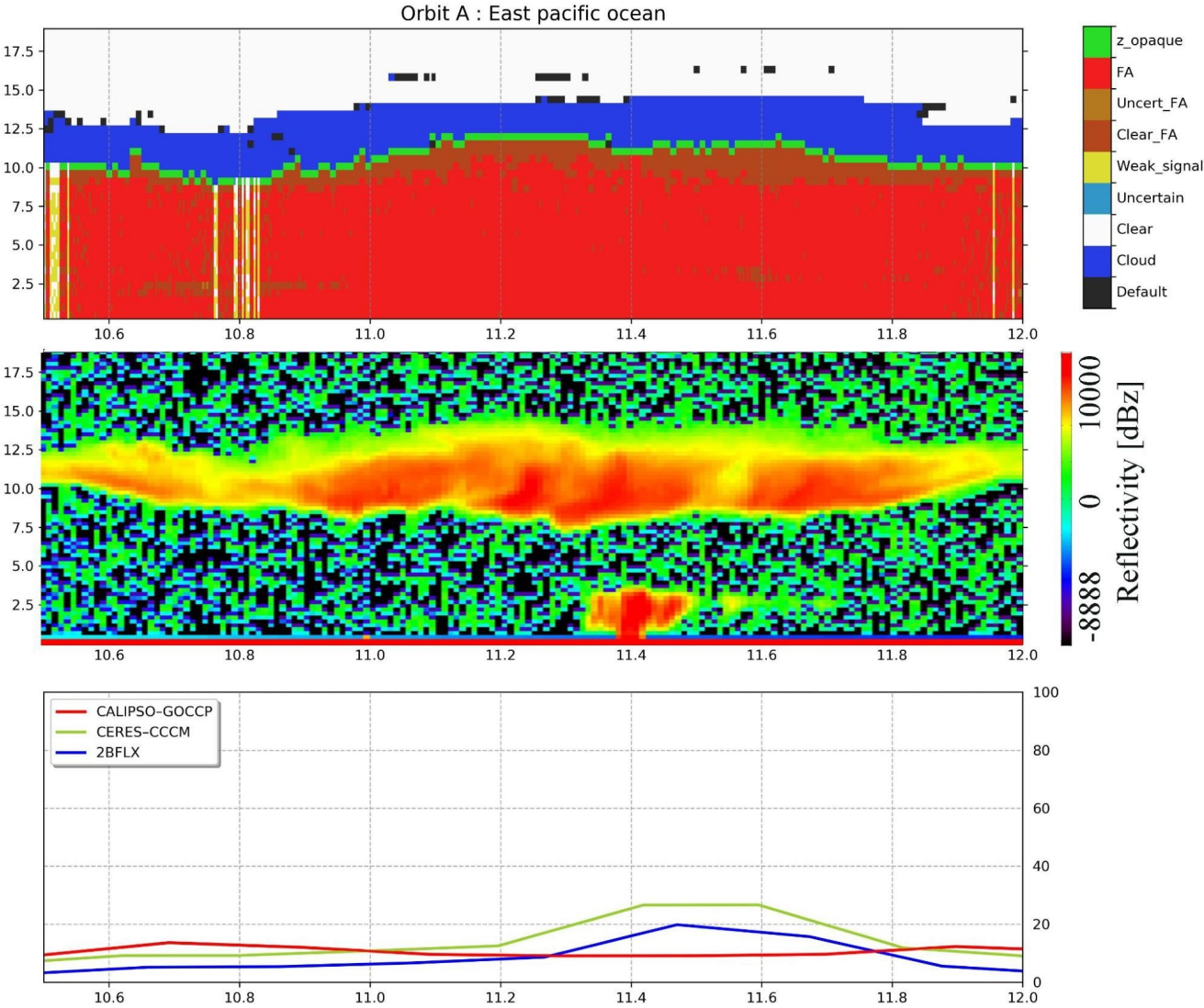


Figure B1: same as figure 12.A between 10.5° N and 12 °N : a) CALIPSO–GOCCP–OPA mask, b) CloudSat reflectivity and c) surface LW CREs.

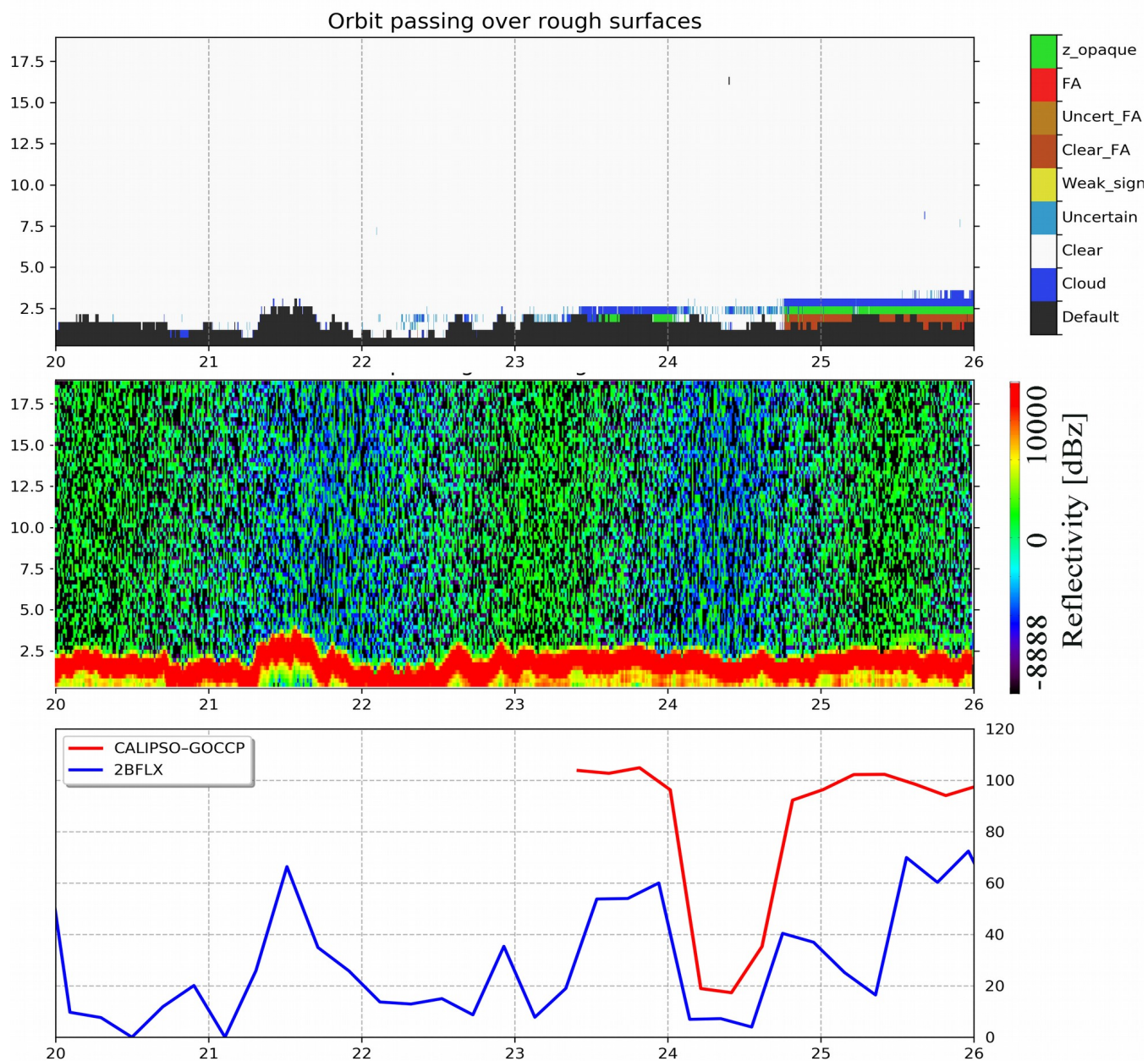


Figure B2: same as fig. B1 but for a piece of orbit passing over China the 10th November 2008 at 18 h 58 min 39 sec,

1075

1080

1085

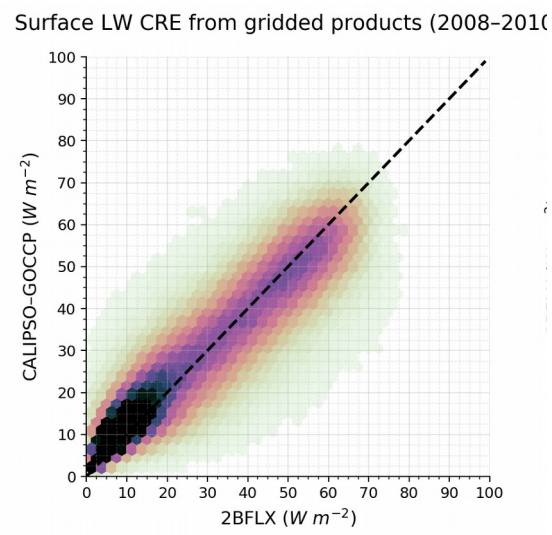


Figure B3: Comparison of monthly, 2°×2° gridded surface LW CRE from CALIPSO–GOCCP, and 2BFLX.

| | | 2008/01-2011/04 periode | | | 2008-2015 periode | |
|-----------|-------------|-------------------------|------------|-------|-------------------|------------|
| | | CALIPSO-GOCCP | GOCCP_Z_FA | 2BFLX | CALIPSO-GOCCP | GOCCP_Z_FA |
| Greenland | RMSE | 9.0 | 8.4 | 16.9 | 15.9 | 15.0 |
| | Correlation | 0.91 | 0.95 | 0.45 | 0.69 | 0.70 |
| SIRTA | RMSE | 11.0 | 10.4 | 15.5 | 10.8 | 9.5 |
| | Correlation | 0.73 | 0.73 | 0.67 | 0.77 | 0.77 |
| KWA | RMSE | 6.1 | 5.6 | 6.9 | 5.7 | 4.9 |
| | Correlation | 0.03 | 0.15 | 0.23 | 0.08 | 0.21 |

1090 Table 1: Root-mean-square-error (RMSE) and correlation coefficient between satellite products and ground-base observations.