

Effects of temperature and salinity on ~~sea-spray~~ bubble-bursting aerosol formation simulated with a bubble-generating chamber~~aerosol formation simulated with a bubble-generating chamber-setup~~

Svetlana Sofieva^{1, 2}, Eija Asmi¹, Nina S. Atanasova^{1, 2}, Aino E. Heikkinen³, Emeline Vidal⁴, Jonathan Duplissy^{5, 6}, Martin Romantschuk², Rostislav Kouznetsov^{1, 7}, Jaakko Kukkonen^{1, 8}, Dennis H. Bamford², Antti-Pekka Hyvärinen¹, Mikhail Sofiev¹

¹ Finnish Meteorological Institute, Helsinki, FI-00560, Finland

² Faculty of Biological and Environmental Sciences, University of Helsinki, FI-00790, Finland

³ Institute for Molecular Medicine Finland, HiLIFE, University of Helsinki, FI-00014, Finland

⁴ CNRS, Univ. Bordeaux, Bordeaux INP, ICMCB, F-33600, Pessac Cedex, France

⁵ Institute for Atmospheric and Earth System Research (INAR), University of Helsinki, FI-00014, Finland

⁶ Helsinki Institute of Physics (HIP), FI-00014, Finland

⁷ Obukhov Institute for Atmospheric Physics, Moscow, Russia

⁸ Centre for Atmospheric and Climate Physics Research, and Centre for Climate Change Research, University of Hertfordshire; College Lane, Hatfield, AL10 9AB, UK

Correspondence: Mikhail Sofiev (mikhail.sofiev@fmi.fi), Antti-Pekka Hyvärinen (antti.hyvarinen@fmi.fi) and Svetlana Sofieva (svetlana.sofieva@helsinki.fi)

Abstract. A new bubble-generating glass chamber ~~design~~ with an extensive set of aerosol production experiments is presented. Compared to the experiments described in the literature ~~since the ground-setting works of E.C.Monahan et al in 1980s, the~~ current setup is among the medium-sized installations allowing ~~for accurate precise control of~~ the air discharge, water temperature, and salinity. The size and material of the chamber offer a variety of applications due to its portability, measurement setup adjustability and sterilization option. The experiments have been conducted in a cylindrical bubbling tank of 10 L volume filled by ~30-40 % with water of controlled salt content and temperature and covered with a hermetic lid. The chamber was used to study the characteristics of ~~the~~ aerosols produced by bursting bubbles under different conditions. In line with previous findings, the sea spray aerosol production was shown to depend linearly on the surface area covered by the bubbles, which in turn is a near-linear function of the air

discharge through the water. Observed dependencies of the aerosol size spectra and particle fluxes on water salinity and temperature, being qualitatively comparable with the previous experiments, substantially refined the existing parameterizations. In particular, the bubble size was practically independent from the air discharge through the water body, except for very small flows. Also, the dependence of aerosol spectrum and amount on salinity was much weaker than suggested in some previous experiments. The temperature dependence, to the contrary, was significant and consistent, with a transition in the spectrum shape at $\sim 10^\circ\text{C}$. Theoretical analysis based on the basic conservation laws supported the main results of the experiments but also highlighted the need of better understanding of the aerosol production from a cold water surface.

1. Introduction

Sea spray aerosols (SSA) emitted from ocean surface significantly affect climate but their specific role in e.g. cloud formation remain uncertain (Brooks and Thornton, 2018; Wilson et al., 2015). SSAs both scatter the incoming solar radiation and indirectly act as cloud condensation nuclei (CCN) or ice nuclei (IN) modifying cloud properties and precipitation patterns. The parameters influencing the production of SSAs include water temperature, salinity, sea state (wave direction, height and shape), wind speed and organic surface-active matter (Grythe et al., 2014; Lewis and Schwartz, 2004). Given that 70 % of the globe is covered by the oceans, the significance of SSAs is emphasized as a source of the global aerosols (Grythe et al., 2014; Lewis and Schwartz, 2004; Soares et al., 2016; Sofiev et al., 2011). Furthermore, as a consequence of climate change and the complex feedback loops, the abundance and concentrations of SSAs are expected to increase in the future (Charlson et al., 1987; Latham and Smith, 1990; Soares et al., 2016).

The main mechanism of SSAs production is bubble-mediated, when bubbles produced by breaking waves burst on the surface (Blanchard and Woodcock, 1980). The bursting process results in two types of droplets: film and jet-drops. Film drops are formed when the film of a bubble cap bursts, whereas jet drops form when a vertical water capillary collapses by the gravity. It is known that the parent bubble size determines the number of produced film and jet drops: large bubbles produce mainly film drops while small bubbles produce mostly jet drops (Woelfel et al., 1987). Film drops are responsible for

the major proportion (~60-80 %) of sub-micrometre particles, whereas jet drops mostly contribute to the
60 production of supermicron particles (Cipriano and Blanchard, 1981; Wang et al., 2017). [A recent study
of Jiang et al. \(2022\) reported observations of a flapping shear instability mechanism, which leads to a
significant fraction of submicron aerosols produced from jet drops from very small \(~1 mm radius\)
bubbles.](#)

Apart from size, the two types of ~~the bubble-originated~~ droplets also differ in their chemical
65 composition: jet drops contain mostly inorganic salts whereas the organic matter is mostly concentrated
in film drops due to their mechanism of formation (Burrows et al., 2014; Wang et al., 2017). Marine
bacteria and viruses are, however, found in both jet and film drops (Aller et al., 2005; Blanchard, 1989,
1978; Rastelli et al., 2017).

Another mechanism of the SSA production is the direct detachment of the water droplets from the
70 wave crests by wind. This mechanism produces the largest aerosols but becomes significant only at very
strong winds.

Numerous parameterizations have been proposed for describing the marine aerosol size spectra
and the flux from the sea surface (see a critical review of Lewis and Schwartz (2004) and later works e.g.
Sofiev et al. (2011)). The most-widely used approximation of marine SSA emissions was suggested by
75 Monahan et al. (1986), albeit the majority of modern applications combine it with later amendments
expanding the emission size spectrum towards smaller particles. A consensus regarding the sub-micron
and sub-0.1 μm aerosols production at the sea surface has been evolving along with the development of
more sensitive and accurate measurement techniques. In one of the first approximations, Rossknecht et
al. (1973) suggested an exponential shape of the marine aerosol number size distribution while only super-
80 micron particles were observed in the study. It has been gradually recognized, however, that particles as
small as 10-30 nm in diameter comprise the bulk of the SSA number emission, but specific shapes of the
spectrum suggested in different studies vary widely (Blot et al., 2013; Clarke et al., 2006; de Leeuw and
Cohen, 2013; Lewis and Schwartz, 2004; Mårtensson et al., 2003, 2010; Sellegri et al., 2006). The water
hydrodynamics, temperature, salinity, and wind forcing, as well as the sea water chemical composition
85 and surfactant concentrations can all modify the marine aerosol emission (Cochran et al., 2017;
Mårtensson et al., 2003; Sellegri et al., 2006; Tseng et al., 1992; Tyree et al., 2007). Decreasing water

temperature was suggested to shift the aerosol size distribution towards the smaller sizes (Mårtensson et al., 2003; Sellegri et al., 2006).

When SSA is generated in laboratory conditions, the challenge is to mimic the [characteristics of](#) key processes of the [bubble-mediated aerosol generation in the](#) real environment: ~~bubble bursting and initial aerosol generation~~. Commonly applied methods include atomizers and bubbling tanks with sintered glass diffuser ~~devices~~ or water jet bubbling systems (Christiansen et al., 2019; Drenckhan and Saint-Jalmes, 2015; Fuentes et al., 2010; Leifer et al., 2003; Mårtensson et al., 2003; Sellegri et al., 2006; Tyree et al., 2007). Aerosol atomizers, being widely used to produce aerosol mixtures in laboratory, do not mimic the dynamics of the marine bubble bursting, whereas this process can be closer replicated in a bubbling tank (Fuentes et al., 2010). Arguably the closest reproduction of wave breaking and bubble generation processes was achieved in an ocean-atmosphere facility of Prather et al. (2013) but the complexity and costs of the experiments were rather high.

Several designs of bubbling tanks have been presented (Christiansen et al., 2019; Fuentes et al., 2010; Leifer et al., 2003; Mårtensson et al., 2003; Prather et al., 2013; Rastelli et al., 2017; Salter et al., 2014; Schwier et al., 2015). The bubbling chamber presented by Mårtensson et al. (2003), one of most-frequently cited works in application to atmospheric modelling, was a flask with a volume of 2.0 L that was filled with 1.0 L of water. The bubbles were generated with a sintered glass filter installed approximately 4 cm below the water surface with pore sizes of 20–40 μm . Sellegri et al. (2006) used a 30 L sealed Perspex tank that was 1/3 filled and continuously flushed with 6 L min^{-1} of filtered air. They relied on two methods of bubble generation: weir created by pumping water and sintered glass filters. Tyree et al. (2007) constructed a bubbling tank that was a glass column filled with 7.2 L of water and the bubbles generated using a fine- or a medium- pore diffuser (80 μm and 140 μm pore size, respectively). Fuentes et al. (2010) compared bubble and aerosol size distributions generated by a plunging-water jet system, porous media bubblers and an aerosol atomizer in an 11 L polytetrafluoroethylene (PTFE) bubbling tank. Christiansen et al. (2019) performed bubbling experiments in a stainless-steel cylindrical 34 L tank using two bubble generation methods, plunging jet and diffuser. The varied parameters in their experiments were water temperature, bubble generation method, bubbling flow rate and water algal concentration. Salter et al. (2014) used 104 L stainless steel vessel coated with polytetrafluoroethylene

(PTFE) below the water level and plunging jet bubble generation method to study the effect of seawater temperature on SSA production over long periods of time. The temperature was accurately controlled with a circulating water bath containing 30% glycerol. Schwier et al. (2015) studied the marine emission of cloud condensation nuclei (CCN), distribution, and the impact of the added organics on CCN. They used a portable 10L glass tank filled with 3.6 L of seawater. The operating parameters were selected based on earlier studies (Fuentes et al., 2010; Leifer et al., 2003). Particle-free air was blown over the surface to mimic the wind effect. The effect of surfactants on CCN properties was also studied in a sea spray generation tanks by Forestieri et al., (2018), King et al., (2012), and Moore et al., (2011). Many bubbling tanks included an optical system to monitor the bubble size (e.g. Leifer et al., 2003; Sellegri et al., 2006). A large number of Many SSA generation experiments with a variety of different setups have not yet resulted in a consensus of the real-life processes forming the sea spray and aerosols. Conversely, the variety of the results and suggested parameterizations does not seem to be reducing with increasing number of studies, except for the demonstrated presence of the sub-0.1 μ m particles. At the same time, parametrizations based on these experiments and applied to atmospheric composition models are not able to reproduce measured variations in atmospheric SSA emission fluxes over the globe (Sofiev et al., 2011; Textor et al., 2006; Witek et al., 2016). In particular, the dependencies of the production term on water temperature and salinity have been challenged.

The aim of the current study is to ~~re-evaluate~~investigate the SSA production from both film and jet droplets as a function of water parameters and to ~~verify~~compare the findings ~~with~~to basic analytical considerations regarding the bubble sizes, life time, impact of salinity on aerosol size spectra, etc. ~~It also lays down the technological background for further experiments with the organic matter and biological species injected into the air with SSA.~~

~~In this paper, we describe a new bubble-generating chamber designed to evaluate the aerosol production in marine simulating conditions and to refine the most important parameterizations of SSA production processes.~~ We present a series of dedicated experiments in a new bubble-generating chamber with artificial salty water with widely varying and tightly controlled bubbling air flow, water salinity, and temperature. To assess the effect of real water composition, two sets of experiments were conducted with water from Mediterranean and Baltic Sea. The study ~~It also lays down the technological background for~~

~~further experiments with the organic matter and biological species injected into the air with SSA. The results of the experiments are compared with theoretical expectations and other experimental works.~~

2. Materials and Methods

The cylindrical glass bubbling tank constructed for this study has the advantages of being comparatively large ~~among the bubbling tanks presented in Sect. 1,~~ but portable, autoclavable, and equipped with multiple exit and entry points for different types of measurement devices (~~Figure B 1~~~~Fig. B1~~).

2.1. Assembly of the chamber

A cylindrical glass chamber (height 320 mm, diameter 204 mm, volume 10 L) and a compatible glass lid were custom made by Laborex Oy ~~with borosilicate glass, which is suitable for autoclaving.~~ The interphase between the chamber and the lid is sealed with a silicon gasket and a metal ring with adjustable diameter. The chamber contains two inlets on the vertical wall (50 mm and 160 mm from the bottom) (~~Figure B 1~~~~Fig. B1~~). A capillary ~~or a diffuser can be with $D_{cap} = 1.2$ mm of inner diameter of the output nozzle is~~ attached to the lower inlet and acts as a bubble-creating nozzle. ~~For this study, we used a capillary with~~ ~~The selected capillary parameters, the upward-looking nozzle and the inner diameter of 1.2 mm, which was were~~ optimal for single-bubble formation tests ~~and limited-airflow experiments. In particular, they and~~ produced a narrower range of bubble sizes compared to the sinter filters ~~(e.g., we tested microporous borosilicate glass sinter filter as DURAN® Micro Filter Candle).~~ The lid contains five inlets similar to those on the side. Particle counters, an exhaust air collecting tube, and a flush airline are connected to the chamber via lid inlets (~~Table 1~~~~Table 1~~). The inlets not connected to any external devices are sealed with plastic stoppers to form a closed system.

The chamber receives purified ($2 \times \varnothing 1 \mu\text{m}$ and $1 \times \varnothing 0.01 \mu\text{m}$ filters, description in Appendix B) in-house compressed dry air (7 bar), which is first decreased to 2 bar and then directed to the manifold of two magnetic valves. The valve separates two air lines, called here ~~inafter as~~ bubble and flush. The bubble line is attached to the bubble-creating capillary. The flush line attached to the lid is used to purify the system and to maintain ~~appropriate pressure balance~~ ~~atmospheric pressure inside the chamber~~. It also offers a

possibility to efficiently dilute the chamber air. Both lines contain airflow controllers, and bubble line includes an additional pressure regulator. Both lines also include a non-return valve and a ball valve to prevent water leakage.

Several tests have been conducted varying the input air stream temperature: e.g., pre-cooling it down to water temperature. The outcome was compared with run with the room-temperature of the air stream, and no difference was found. Therefore, the main set of experiments -was run with the room-temperature bubbling air flow, ~21 °C.

2.1.1. Aerosol characterization with particle counters

Four online particle counters were installed in the chamber system: a Condensation Particle Counter (CPC), an Optical Particle Sizer (OPS), a Differential Mobility Particle Sizer (DMPS) and an Aerosol Particle Sizer (APS) (Table 1~~Table 1~~). The OPS, DMPS and APS measure the particle number size distribution, and the CPC measured the total aerosol concentration in the experiments. The flow rate of each instrument was measured regularly (TSI Mass flow meter 4143), DMPS raw data ~~were~~ inverted to final particle size distributions as described by Wiedensohler et al. (2012) (FMI DMPS) and compared with the total CPC numbers. The specifications of the used aerosol measurement devices are listed in Table 1~~Table 1~~.

To ensure that only dry particles were measured, the sample air reaching the particle counters was dried with silica-gel based diffusion driers (Topas DDU 570). The relative humidity, RH, after the driers was monitored with Rotronic Hygroclip RH- sensors and a chilled mirror dew point sensor (Edgetech DewMaster) to ensure $RH < 30\%$.

The equivalent particle sizes obtained by different devices and expressed as a diameter, are not directly comparable due to different measurement principles (see Table 1~~Table 1~~). Electrical mobility diameter measured by DMPS is a geometric diameter assuming the spherical shape of the particles. The aerodynamic diameter D_a from the APS was converted to electrical mobility diameter D_e following

$$\text{Khlystov et al. (2004): } D_e = D_a \sqrt{\chi \frac{\rho_0}{\rho_p}}$$

where χ is the shape factor, ρ is density, and subscripts θ and p denote ~~to~~-reference density and particle density, respectively. The shape factor for sodium chloride was estimated to be 1.10 for our size range ~~of~~ ~~interest~~-based on Wang et al. (2010), the particle density was estimated ~~asto be~~ 2.16 g cm⁻³, while the reference density was 1 g cm⁻³.

To relate the optical diameter with the electrical mobility diameter, we rely on the fact that the OPS is factory- calibrated utilizing polystyrene latex (PSL) spheres which have a refractive index of 1.588. As this is relatively close to the refractive index of sodium chloride (1.54), and sodium chloride shape factor is close to unity, we can assume that the difference between the PSL and the sodium chloride particle optical diameters is negligible, but can cause insignificant discontinuity of the spectra over the overlapping size ranges (0.3-0.6 μ m) (Viskari et al., 2012; Wiedensohler et al., 2012). Thus, the OPS data were used without any further diameter conversion.

Table 1. Particle counters and their specifications used in the experiment. Flow rate refers to sampling flow rate of the devices.

Instrument	Measured parameter	Manufacturer, model	Size range	Sizing method	Time resolution	Flow rate
CPC	total particle concentration	Airmodus A20	> 5 nm	-	1 s	<u>1 L/min</u>
DMPS	number size distribution	Home made with Medium Hauke type DMA (Differential Mobility Analyzer) and TSI 3772 CPC	10 – 600 nm	electrical mobility diameter	~7 min	<u>0.7 L/min</u>
APS	number size distribution	TSI 3321	0.5 – 20 μ m	aerodynamic diameter	1 min	<u>1 L/min</u>
OPS	number size distribution	TSI 3330	0.3 – 10 μ m	optical diameter (light scattering)	10 s	<u>1 L/min</u>

2.1.2. Bubble size characterization with filming cameras

Two digital cameras (Creative Live! Cam Chat HD VF0790) were installed to record both horizontal and vertical view of the bubbling in ~~the~~ chamber. The bubble-generating air flow was sufficiently low to generate only a single layer of bubbles on the surface at all tested air flows (Figure C 1 ~~Fig. C1~~). Therefore, the images could be analysed as two-dimensional still-images from vertical view camera with the third dimension always being single-~~bubble~~ thick. The distinctive circular shape of the interfacial bubbles

allowed determination of bubble diameter by photographic methods. The still images and films were used for analysing the bubble size distributions and the foam area covering the surface (see calculations in Sect. 3.1.1, 3.1.2).

Five still images were taken per each experiment (Table 2: Description of experiments. ~~Table 2~~~~Table 2~~) and the images were analysed with ImageJ software (version 1.51, National Institute of Health) (Schneider et al., 2012). The brightness and contrast were adjusted for each image to highlight the bubbles on the surface. Bubbles were characterized as circular shapes with dark outlines (~~Figure C.1~~~~Fig. C1~~, Appendix C). Scaling was adjusted according to the chamber diameter of 204 mm. The photographic methods for bubble size and shape determination have been compared for a range of techniques, such as the standard funnel method and the acoustic methods, generally showing good consistency (Leifer et al., 2003; Vazquez et al., 2005).

2.2. Experimental setup

Four different sets of experiments have been performed in the chamber (Table 2~~Table 2~~). Most of experiments were made with the chamber filled with sodium chloride (NaCl) solutions with varying operational parameters (T, salinity, and bubble flow rate). Temperature~~-varying~~ experiment included also testing the Baltic and Mediterranean ~~S~~sea waters. Similar protocols were applied ~~all in each of the~~ experiments, as listed in Table 2~~Table 2~~ and described below. Prior to each experiment, the chamber was washed with tap water and detergent, then rinsed with MQ, autoclaved ultrapure water (type 1, resistivity >18.2 M Ω ·cm) purified with Milli-Q® Direct 8/16 System (used with Q-PAK® TEX-, Progard® T3- and BioPak® UF cartridges), and allowed to air dry at room temperature. Even though the chamber can be autoclaved, sterilization was not required for the inorganic specimen experiments. At the beginning of each experiment, the chamber was flushed with purified in-house air for at least 30 min to remove all remaining particles from the system. After changing the controlling parameter, the system was let to equilibrate for 30 min prior to beginning the sampling. Sampling times ranged from 30 to 60 min.

The size of the chamber (~~Figure B.1~~~~Fig. B1~~) and the selected flow rates (Table 2~~Table 2~~) ensured that ~~an upward air flow in the chamber created by the bubble-generating air flow did results in an upward particle flux in the chamber with velocity~~ not exceeding 0.2 mm sec⁻¹ in ~~any of~~ our experiments. ~~Such velocity~~~~The~~

flux speed less than 1 mm sec^{-1} is lower than dry deposition velocity of any of the produced particles (Kouznnetsov and Sofiev, 2012). The slowest deposition velocity of $\sim 1 \text{ mm sec}^{-1}$ is characteristic for smooth water surface and sub-micron particles, which is still several times faster than the upward air flow in the chamber. Therefore, the large diameter of the chamber allowed to neglect the upward flux due to the bubble-generating air flow. It also made the particle deposition on the chamber walls insignificant compared to its production from the foam in the centre of the chamber.

Table 2: Description of experiments.

Experiment	Description	Varying parameter	Fixed parameters	Observed parameters
Bubble size experiment	Foam on the water surface at different bubble flow rates	Bubbling flow rate: 0.01 L min ⁻¹ , 0.2 L min ⁻¹ , 0.8 L min ⁻¹ , 1.5 L min ⁻¹ Dilution flow rate (respective to bubbling flow rate): 3.6 L min ⁻¹ , 3.4 L min ⁻¹ , 2.8 L min ⁻¹ , 2.1 L min ⁻¹ Solution: MQ; 0.1 M-0.6 M NaCl; Baltic & Mediterranean sea water	Temperature: 22 °C	Bubble sizes on the surface, foam area
Air flow experiment	Aerosol production at different bubble flow rates	Bubbling flow rate: 0.1-1.9 L min ⁻¹ Dilution flow rate (respective to bubbling flow rate): 3.5-1.6 L min ⁻¹	Temperature: 22 °C Salinity: 0.2 M NaCl	Aerosol size spectrum
Salinity experiment	Aerosol production from water with different NaCl molality	Solution: MQ, 0.1 M-0.6 M NaCl	Bubbling flow rate: 0.8 L min ⁻¹ Dilution flow rate: 2.8 L min ⁻¹ Temperature: 22 °C	Aerosol size spectrum
Temperature experiment	Aerosol production at different water temperatures	Temperature: 2-30 °C Solution: Baltic & Mediterranean sea water, 0.1 M NaCl, 0.6 M NaCl	Bubbling flow rate: 0.8 L min ⁻¹ Dilution flow rate: 2.8 L min ⁻¹ Flow rate: 0.8 L min ⁻¹	Aerosol size spectrum

In the bubble size experiment, bubble production from 4 L of 0.1 M, 0.2 M, 0.3 M, 0.4 M, 0.5 M, and 0.6 M (5.8 gL⁻¹, 11.7 gL⁻¹, 17.5 gL⁻¹, 23.4 gL⁻¹, 29.3 gL⁻¹ and 35.1 gL⁻¹ respectively) NaCl-solutions, as well as from Baltic and Mediterranean sea waters, at 0.01 Lmin⁻¹, 0.2 Lmin⁻¹, 0.8 Lmin⁻¹ and 1.5 Lmin⁻¹ bubble air flow rate was monitored with cameras. Bubble sizes were determined from still-images of the vertical camera as described in Sect. 2.1.2.

In the air flow experiment, 4 L of MQ and 0.1 M NaCl-solution were tested at bubbling air flow rates of 0.1, 0.3, 0.5, 0.7, 0.9, 1.1, 1.3, 1.5, 1.7 and 1.9 Lmin⁻¹ to examine the effect of changing air flow rate-on

aerosol production, comparing pure and saline water (Sect. 3.1.2.). Based on these results, a flow rate of 0.8 Lmin⁻¹ in the bubble line was selected for the following salinity- and temperature- experiments since such flow rate ensured the optimal bubble generation and aerosol release: sufficient amount of released aerosols for observing the whole particle size spectrum but still limited single-bubble-thick foam area. In the salinity experiment, the aerosol production was measured in 4 L of MQ with NaCl concentrations varying from 0.1M to 0.6 M, at 0.1 intervals, maintaining the 0.8 Lmin⁻¹ bubble line air flow rate, at the room temperature 22°C.

The effect of varying temperature on aerosol size spectra was tested in 0.1 M and 0.6 M NaCl solutions, and Baltic and Mediterranean sea waters. NaCl concentrations were selected to be equivalent to the range of sea water molarities, 0.1 M corresponding to the concentration of Baltic Sea (on average 10‰, Laakso et al., 2018) and 0.6 M to that of the Mediterranean Sea (38 ‰, Borghini et al., 2014). The concentration of NaCl in the chamber was adjusted using sterile 5 M NaCl stock solution. The chamber was insulated with a ~~foam~~-plastic ~~foam~~ in order to maintain the temperature as constant as possible while measuring. ~~The temperature was monitored between the particle size distribution measurements.~~ The tests were run at 2°C, 5°C, 9°C, 11°C, 13°C, 19.5°C, 25°C and 30°C. The volume of the artificial saline water was 4 L and of the natural sea waters 2.7 L. Before the experiment, 0.5 L of ~~the water solutions were~~ frozen to ice cubes, added to the rest of the water, and thawed immediately before sampling. The remaining 3.5 L of saline water and 2.2 L of sea waters, and the chamber, as well as the insulations were kept at 4 °C overnight prior to the experiment. As a result, the solution reached as low as 2°C, which was the first measurement point of the experiment (Table 2~~Table 2~~). Each measurement period lasted approximately 35 minutes during which the temperature rose ~~or went down~~ by ~~max~~ 1-2°C ~~depending on the relation of water and room temperature~~. A heating magnetic stirrer (Witeg Premium Hotplate Stirrer MSH-30D) was used for temperature control and water mixing.

Baltic Sea water was collected on 3rd of June in 2018, 8:40 UTC at Utö Island, Finland (59°46.840'N, 21°22.130'E), approximately 500 meters from the shore. The surface microlayer was collected and stored in sterile plastic bottles. Bottles were transported to Helsinki within nine hours, keeping them at room temperature, after which they were frozen. Mediterranean Sea water was collected on 7th of July in 2018 in Miami Playa, Spain (40°59'53.2"N, 0°56'04.3"E) at 13:00 UTC. At the time of sampling, the distance

from the shore was 200–300 m. The bottles were frozen approximately 30 minutes after collection and transported in the frozen state to Helsinki.

3. Results

3.1. Generation of bubbles and their lifetime

Generation and lifecycle of bubbles on the surface of various liquids has been attracting attention for centuries (Maxwell, 1874; Plateau, 1873). Despite the extensive interest and developed comprehensive models, substantial uncertainty still exists, mainly owing to the extreme complexity and diversity of the governing processes (Lewis and Schwartz, 2004; Lorenceau and Rouyer, 2020; Poulain et al., 2018).

Within the current study, we concentrate only on two parameters related to the bubble production: the characteristic bubble size and the bubble foam lifetime at the water surface. These parameters are important for ~~the future follow-up~~ construction of a physical model of the sea spray generation. Wherever possible, the experiments are presented together with basic theoretical considerations highlighting the controlling mechanisms and suggesting the shapes of the key dependencies.

3.1.1. Bubble size for different flow rates and salinities

The bubble formation and departure from the surface of the air-supply capillary, on which it is formed, are controlled by water density, surface tension, and the wettability of the surface on which the bubble is formed. If kinematic effects of the outgoing air jet can be neglected (air flow < 1 L min⁻¹, see Sect 3.1.2), the bubble breakout occurs when the buoyancy lifting the bubble exceeds the surface tension force, which attaches it to the surface (Figure 1).

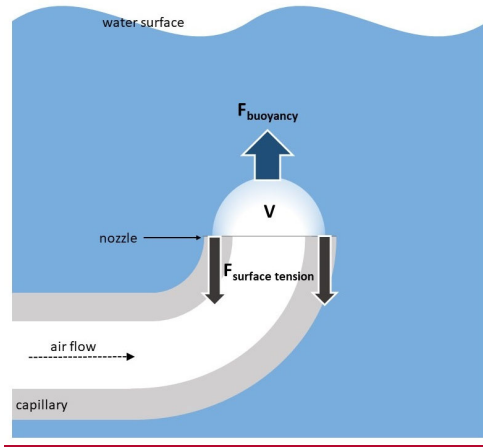


Figure 1. Schematic representation of forces affecting a bubble at the capillary nozzle surface. V refers to the volume of the bubble. F_{buoyancy} is Archimedeal to the lifting force of buoyancy and $F_{\text{surface tension}}$ to the the surface tension pulling down at the rim of the bubble.

Denoting the volume of the forming bubble as V_b , its diameter at the breakout plane as D_b , water surface tension as γ , air and water densities as ρ_a and ρ_w , respectively, and gravity acceleration as g , one obtains the following relation for the breakout moment:

$$(1) \quad (\rho_w - \rho_a)gV_b = \pi D_b \gamma$$

$$V_b = \frac{\pi D_b \gamma}{(\rho_w - \rho_a)g}$$

For pure water at 293 K, $\gamma \sim 73 \text{ mN m}^{-1}$ (Pátek et al., 2016). The shape of the detaching bubble and, consequently, the relation between V_b and D_b determine the final bubble volume. Here and in the below analysis, the water layer above the forming bubble is assumed thin, so that the additional pressure due to overlaying water can be neglected.

Analysis of videos of the bubble production suggested two distinct regimes of the bubble formation: (i) slow formation of a bubble at a capillary exit (Figure 1), and (ii) the bubbles are formed far from the capillary due to the fast injection of air jet into the water body (the only-regime with kinematic effect).

The slow bubble formation regime can be altered depending on capillary configuration: bubble formation at the exit plane of the upward-looking capillary or formation of a bubble around the exit hole of the downward/sideways looking capillary.

For the upward-looking capillary (Figure 1) used in all experiments discussed below, the forming bubble has the horizontal diameter equal to that of the capillary whereas its volume is computed from the Eq. (1) with D_b equal to the capillary diameter D_{cap} . The experiment was performed with $D_{cap} = 1.2$ mm, i.e., the final bubble volume was 28 mm^3 and the diameter of the rising spherical bubble (after it detaches from the capillary and gets spherical) was 3.7 mm and diameter (after it detaches from the capillary and gets spherical) were 28 mm^3 and 3.7 mm, respectively. This prediction matches closely the experimental mean size of 3.74 mm (Figure 2 Fig. 1, 0.01 L min^{-1} flow, artificial water).

~~For side or downwards-looking capillary exit, air would form a bubble near the capillary hole on the upward-looking surface of the capillary pipe. Its size would grow until the buoyancy finally takes it out. The largest bubble, the diameter of which is not limited by walls but solely controlled by the surface tension, would correspond to the bubble shape of half of the sphere attached to the capillary surface near the air blowing hole. The tension force then acts over the longest perimeter and holds the bubble with maximum strength. Denoting the diameter of such a half sphere as D , from Eq. (1), we obtain the equation for D at the breakout moment:~~

$$(2) \quad (\rho_w - \rho_a)g \frac{1}{2} \frac{\pi D_b^3}{6} = \pi D_b \gamma$$

Its solution for the above lab conditions leads to $D_b = 9$ mm and the diameter of the spherical bubble after the detachment $D_{b_max} = 7.5$ mm. The D_{b_max} allows substantial variation for non-horizontal surfaces: the actual shape of the about to detach bubble is affected by wettability and local surface inclination.

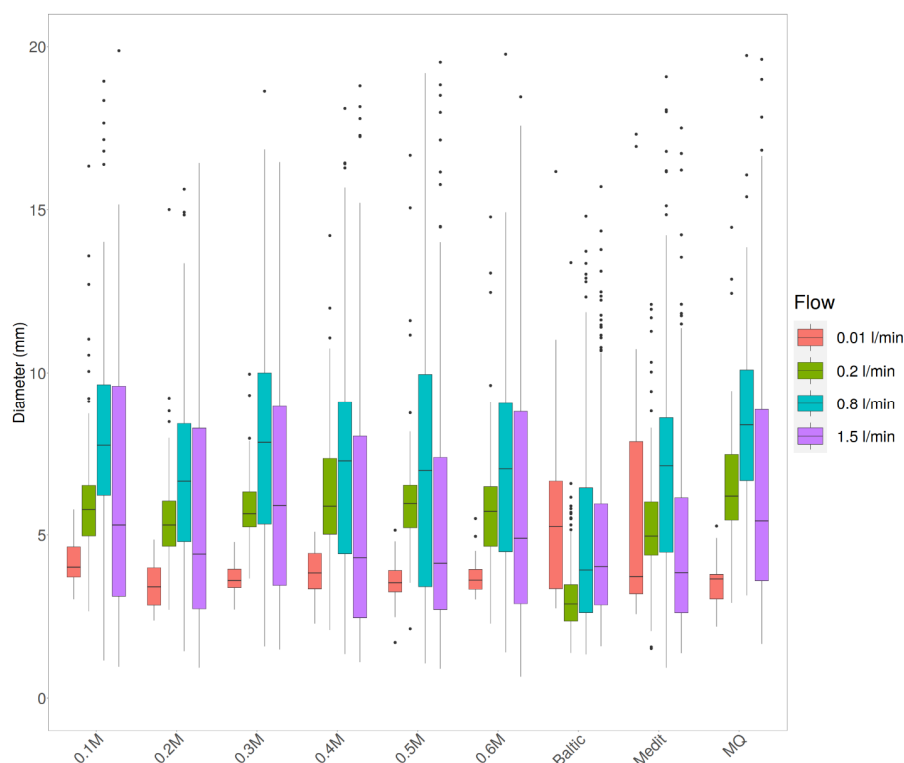


Figure 2. Bubble sizes for different flow rates and water salinities formed from upwards-looking capillary. Boxes span over quartiles Q1-Q3, with median shown as a horizontal dash. The upper whisker extends from the hinge to the highest value that is within 1.5 * IQR of the hinge (Q1-Q3 distance). The lower whisker extends from the hinge to the lowest value within 1.5 * IQR of the hinge. Data beyond the end of the whiskers are considered as outliers and plotted as points.

Formatted: Not Highlight

The Eq. (1) also describes the disintegration of the powerful air jet injected with high speed into the water body away from the capillary. Individual bubbles are formed dynamically but their separation from the agglomerates is presumed to be controlled by the same competition of the surface tension keeping a large air volume together and the buoyancy promoting the random fluctuations in the shape of this volume and detaching the individual bubbles from it. This semi-qualitative reasoning was confirmed

in the experiment, which showed same ~~characteristic~~ bubble size ~ 7 mm for air flows of 0.2 L min^{-1} and 0.8 L min^{-1} when the jet was sufficiently powerful but not yet producing large disturbances in the tank (Figure 2~~Fig. 1~~). Finally, the jet produced by an air flow of 1.5 L min^{-1} (air speed in the capillary exceeding 20 m sec^{-1}) caused sufficient turbulence to disintegrate the large bubbles broadening the size distribution towards the small ranges and getting closer to the bubble size ranges reported for plunger systems, aquarium aerators, and natural conditions (Deane and Stokes, 2002; Fuentes et al., 2010; Stokes et al., 2013). This effect was visible also at 0.8 L min^{-1} air flow, which can be considered as an upper limit of applicability of the above models and as the optimal air flow ensuring sufficient aerosol production and acceptable bubble size range without excessive dynamic effects.

Broadening of the distributions of Figure 2~~Fig. 1~~ towards very large bubbles for powerful air flows has no relation to the production mechanisms. It refers to coagulation of aged bubbles.

For salty water, both density and surface tension change but the variations do not exceed 10% (Kalová and Mareš, 2018; Wang et al., 2018; Wen et al., 2018) and can be neglected, in full agreement with the experiment, which did not show significant salinity-driven variations.

3.1.2. Foam area and aerosol production

The foam area obtained during the bubble generation experiment showed a nearly-linear dependence on the bubble flow rate (Figure 3~~Fig. 2~~). A more precise fitting made for all salinities (excluding the Baltic and Mediterranean water samples) leads to a power-law relation showing some saturation:

$$(2) \quad A(F) = A_0 \left(\frac{F}{F_0} - 1 \right)^{2/3}$$

Here F_0 and A_0 are experimentally determined scaling factors. $F_0 = 0.01 \text{ L min}^{-1}$ is flow scale and $A_0 = 0.72 \text{ cm}^2$ is ~~area scale fitting constant~~, which together describe the geometry of the experiment ~~relating the A is the foam area A dependant on the air flow F~~ . The normalized root of mean-square error (RMSE) of the fit (2) is $< 4\%$. For smaller airflows approaching F_0 , no foam is formed: the bubbles are generated slower than they break.

Formatted: Font: Italic

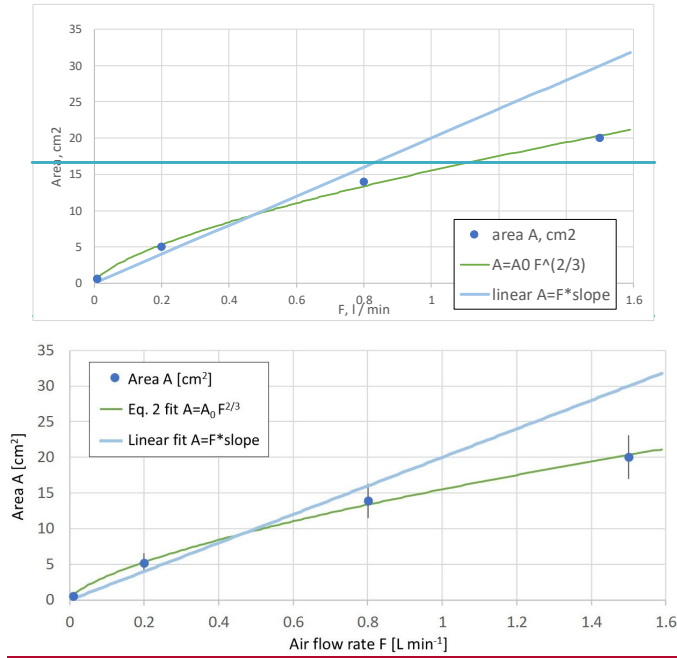


Figure 3. Bubble foam area vs flow rate, fit of Eq. (2). Mean foam area calculated from MQ and NaCl-solutions observations at +21 °C. The green line shows the fit of Eq. 2 and light blue line shows linear fit to the mean foam area A. Error bars show standard deviation.

Comparing the linear and 2/3-power fits in Figure 3Fig-2, one can see that the bubble coagulation and the foam thickening become significant only for the flow above 1 L min⁻¹. Omitting the $F=1.5$ L min⁻¹ and making a zero-intercept linear regression through the remaining points (Figure 3Fig-2) one obtains suggests the slope of $20 \text{ cm}^2 \text{ min L}^{-1} = 0.033 \text{ sec m}^{-1}$. Assuming that the foam thickness h is equal to the bubble diameter $d_b \sim 7 \text{ mm}$, one gets 4.7 second as a typical lifetime of the bubbles obtained in the experiment. For smaller bubbles (thinner foam, smaller foam area, lower air flow) lifetime increases, i.e., the large bubbles produced by coagulation tend to burst faster.

The above estimate, however, should be taken with caution because the dependence of the observed particle number concentration (presumably, linearly related to the foam area) on the flow rate was more complicated. In fact, the total aerosol concentration for low flow rates was practically stable whereas for high rates grew faster than linear with the flow rate (Figure 4Fig-3), with certain change of behaviour at $\sim 1 \text{ L min}^{-1}$. Combined with the near-linear relation of the foam area and flow rate (Figure 3Fig-2), it suggests a reduction of the bubble lifetime with growing air flow rate. This is because for the large foam area and strong air flow, new-coming bubbles squeeze into the centre of the already existing foam, which leads to intense coagulation in the middle of the foam-covered area. In turn, coagulation results in formation of large bubbles, which, as shown above, tend to burst faster. Therefore, below, we concentrate on the experiments with the bubble flow F lower but close to 1 L min^{-1} and accept linear relation of the foam area and bubble air flow.

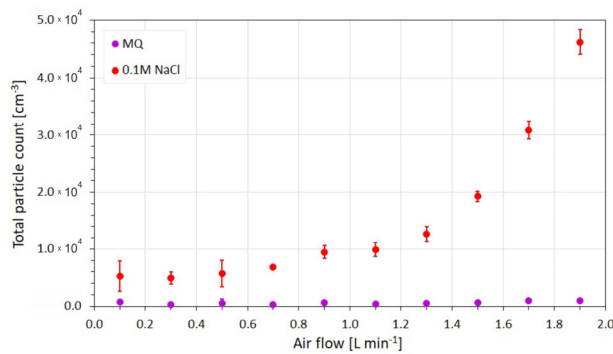


Figure 4. Total aerosol number concentration for MQ and 0.1 M NaCl -solution as a function of the flow rate from bubble generation line.

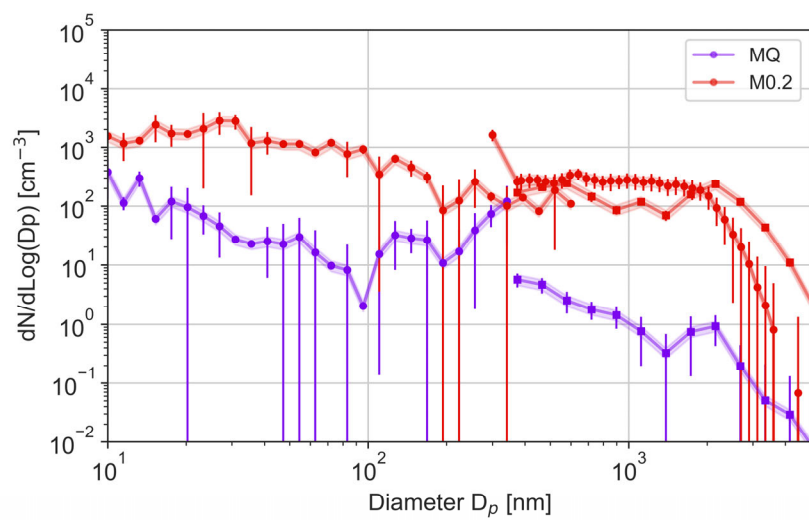
3.2. Produced aerosol size distributions

Typical size distributions obtained in the experiments have two distinct ranges with strongly different slopes: D_p smaller and larger $\sim 2 \mu\text{m}$ (Figure 5Fig-4). These ranges roughly correspond to those ranges of different mechanisms of the particle formation: film- and jet-originated bubbles (Monahan et al., 1986; Wang et al., 2017). A recent study (Jiang et al., 2022) also suggested that in general case there might be

some sub-micron contribution of jet droplets from small bubbles but the addition is a few tens of %, hardly visible in the log-log charts. Also, in the current experiment the bubble size was controlled, which further restricted the effect.

The curves on Figure 5 ~~Fig. 4~~ reveal two other peculiarities: (i) there is no reduction of the particle number concentration towards ~~the D_p~~ 10 nm limit of the experimental range (ii) the MQ water, albeit showing very few particles larger than 30 nm and significantly less particles than salty water across the experimental range, still produce comparable total number of particles as the salty water. The same result was obtained for a double-distilled water (not shown) suggesting that even these artificially purified liquids still contain minuscule amounts of impurities, which do not let the droplets to evaporate completely, instead forming very small particles (Figure 5 ~~Fig. 4~~). The effect is known and has been hypothesised to originate from residual water impurities, but was also shown to greatly depend on container material, thus suggesting leaching from the walls as one of potential mechanisms (LaFranchi et al., 2003).

Formatted: Font: Italic



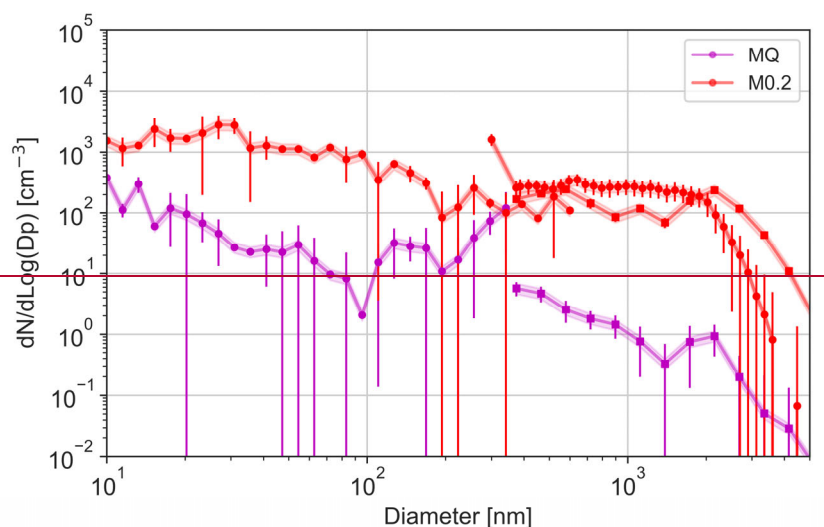


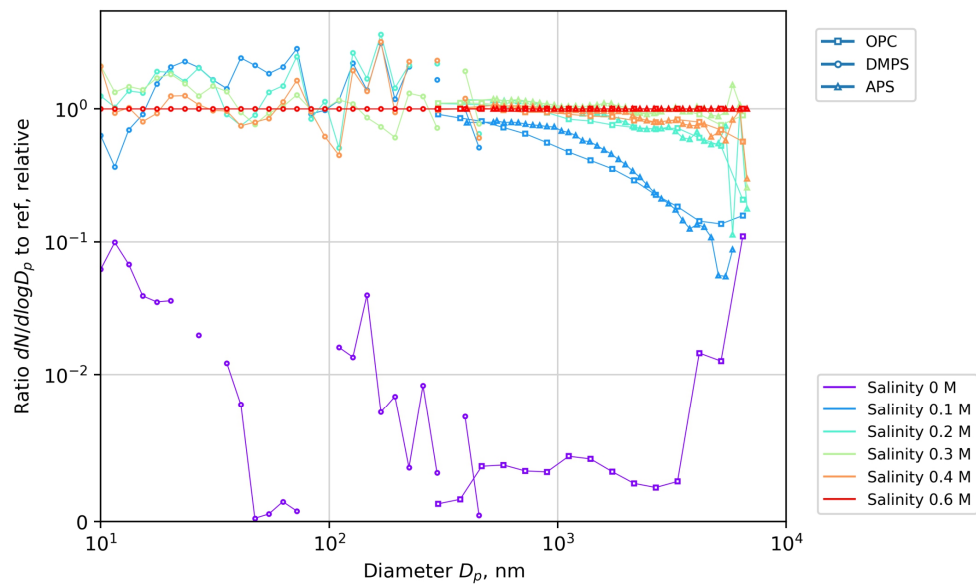
Figure 5. Aerosol size distribution for MQ water (lilas markers) bubbled at 0.8 L min^{-1} and 0.2 M NaCl -solution (red markers) bubbled at 0.8 L min^{-1} ; as measured with the DMPS (circles), APS (circles) and OPS (rectangles). Shading indicates $\pm 20\%$ deviation and is based on a measured instability-uncertainty range of the system using MQ water only. Error bars show the measured standard deviation during the experiments.

3.3. Impact of salinity on aerosol spectra

The observed effect of water salinity on the aerosol sizes is summarised in Figure 6 via the bin-wise ratio of spectra at different salinities to that of the $S=0.6 \text{ M}$. As one can see, the effect is quite small and not uniform through the D_p range. In particular, lower salinity leads to a clear reduction of coarse and very small particles, whereas the intermediate-size aerosols have a tendency to grow. The amplitude of the effect does not exceed a factor of 3-4, except for the coarsest aerosols and very low salinities. The number concentrations of coarse aerosols ($D_p > 5 \mu\text{m}$) were very low (Figure 5), so the ratios in Figure 6 for $S < 0.3 \text{ M}$ should be taken with caution (the error bars are not shown for clarity of the picture).

440

The obtained relations are in a sharp contradiction to the dependencies suggested by a comparatively similar but smaller-scale experiment of Mårtensson et al. (2003), who reported more than an order of magnitude of a difference between the 3% and 0.9% salinities. However, an explanation for such a sharp effect was not provided. A simple physical mechanism of the salinity effect and its strength are presented in the Sect. 4 (Discussion). suggests much smaller effect, lower strength, in general agreement with Figure 6.



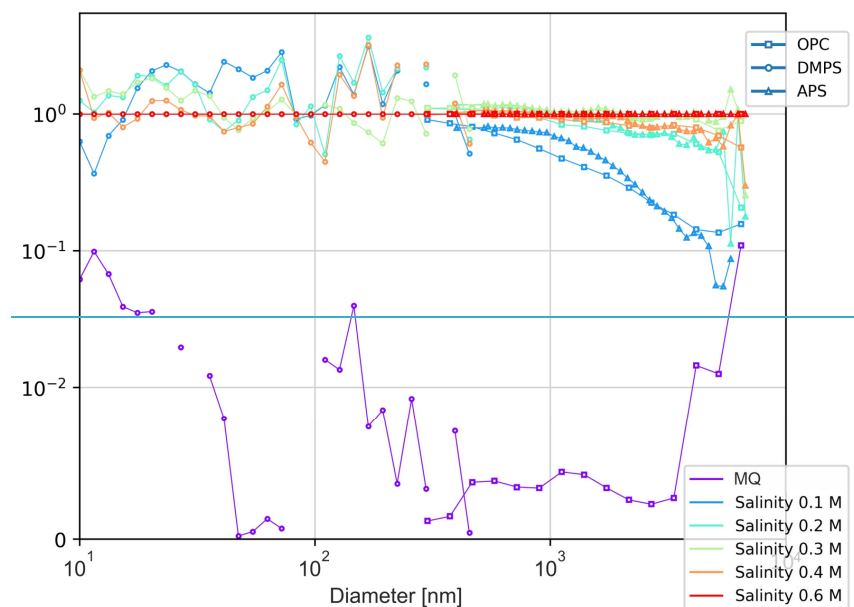


Figure 6. Salinity effect on particle size spectrum: the spectra for different salinities normalized with the spectrum of the salinity $S=0.6 \text{ M}$.

3.4. Effect of water temperature on aerosol spectra

The experiments with varying water temperature (Figure 7, Figure 8, Fig. 6, Fig. 7) also brought about peculiar results observed in all experiments and confirmed in numerous repetitions.

Firstly, the sensitivity of sub-100 nm particles appeared significantly higher than that of coarser ones.

There was also some shift of the peak of the distribution: for the coldest water (2.5°C), the size distribution has a peak at ~60nm, which shifts towards smaller sizes with growing temperature, so that at 10°C the distribution is monotonically decreasing starting from the smallest measured size of 10nm. Figure 8 also suggests high temperature sensitivity of production of particles >2 μm in diameter but this conclusion should be taken with caution because the absolute concentrations of these particles were small.

(Figure 7). The same trends were observed for all salinities (Figure 7, Figure 8, see also Figure 11 in Discussion section).

Secondly, the dependence exhibits a sharp change at $T_w \sim 10$ °C: for warmer water the dependence is essentially negligible but for colder water the dependence is ~~very~~ steep: the difference in the small particles production at 10 °C and 2.5 °C exceeds an order of magnitude. There is also a dependence on salinity: for low-saline water the effect is smaller.

These findings are also in sharp contradiction with those of Mårtensson et al. (2003) but broadly agree with the recent results of Nielsen and Bilde (2020), who measured the total particle counts coming from burst of individual bubbles, and in excellent agreement with Zábori et al. (2012), who also noticed the 10°C as a threshold of the temperature dependence. Possible reasons for the effect are discussed in the Sect. 4 (Discussion).

Throughout almost all experiments, a substantial discontinuity was observed between the concentrations reported by DMPS and APS/OPC for the common size range of D_p of 400-500 nm. The same issue is also evident in other experiments jointly using these devices (Viskari et al., 2012; Wiedensohler et al., 2012). Since the DMPS uncertainty was growing practically starting from 200 nm, we conclude that the APS/OPC data show more accurate results. For the normalized relations (Figure 8~~Fig. 7~~) such discontinuity is smaller than fluctuations of the curves themselves and therefore does not affect the conclusions of the study.

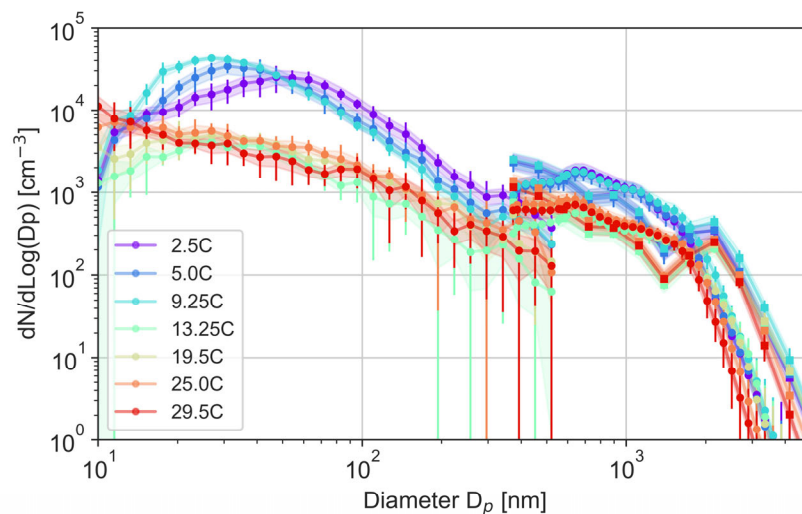
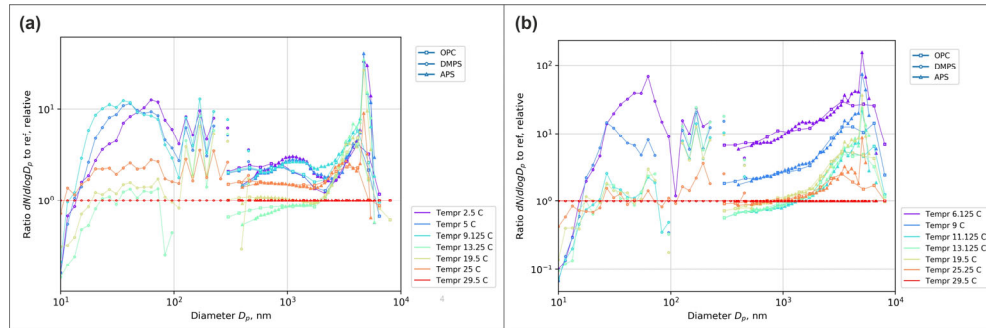


Figure 7. Aerosol size distributions for 0.1M NaCl solution bubbled at 0.8 L min^{-1} ; as measured with the DMPS (circles), OPS (rectangles) and APS (circletriangles) for different water temperatures. During the experiments (~30 min each), water temperature was rising/falling by 1-2 degrees max depending on the relation between water and room temperatures. Legend presents mean temperature for each experiment.

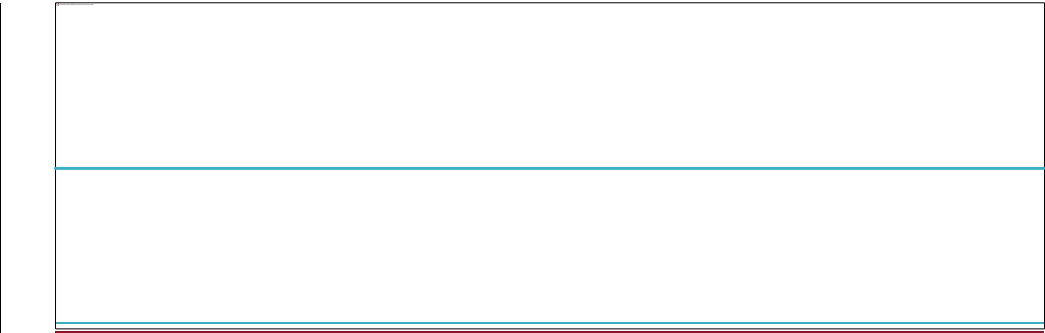


Formatted: Font: (Default) Times New Roman, English (United Kingdom)

Formatted: Normal

Formatted: Font: (Default) Times New Roman

Formatted: Normal, Line spacing: single

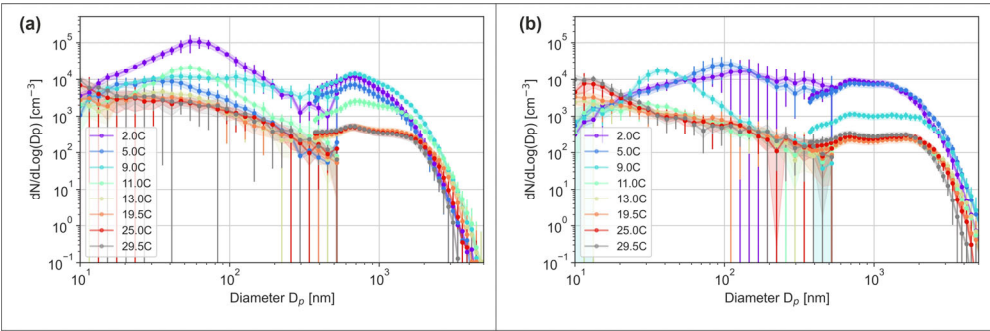


485 ▲
▲
Figure 8. Water temperature effect on particle size spectrum for salinity S=0.1M (a) and S=0.6M (b). In both panels, the spectra for different temperatures are normalized with the spectrum at T=29.5C and the corresponding salinity. [Color legends present mean temperatures of the experiments.](#)

- Formatted: Font: 8 pt
- Formatted: Line spacing: single
- Formatted: Font: (Default) Times New Roman
- Formatted: Normal, Line spacing: single
- Formatted: Line spacing: single

490 **3.5. Aerosol spectra for seawater samples**

The experiment included two water samples collected from Mediterranean and Baltic seas. They were included in the flow- and temperature- dependencies tests (Figure 2, Figure 9, Fig. 1, Fig. 8). The sea water sessions confirmed the above-mentioned temperature dependence of the particle spectra: a sharp difference of aerosol production for warm and cold water, with the threshold being around 10 °C. For water colder than 10 °C, production of sub-micron aerosols is much larger, and becomes sensitive to actual water temperature. However, for water warmer than 10 °C, there is practically no dependence of the particle spectrum on temperature across all sizes.



Formatted: Line spacing: single

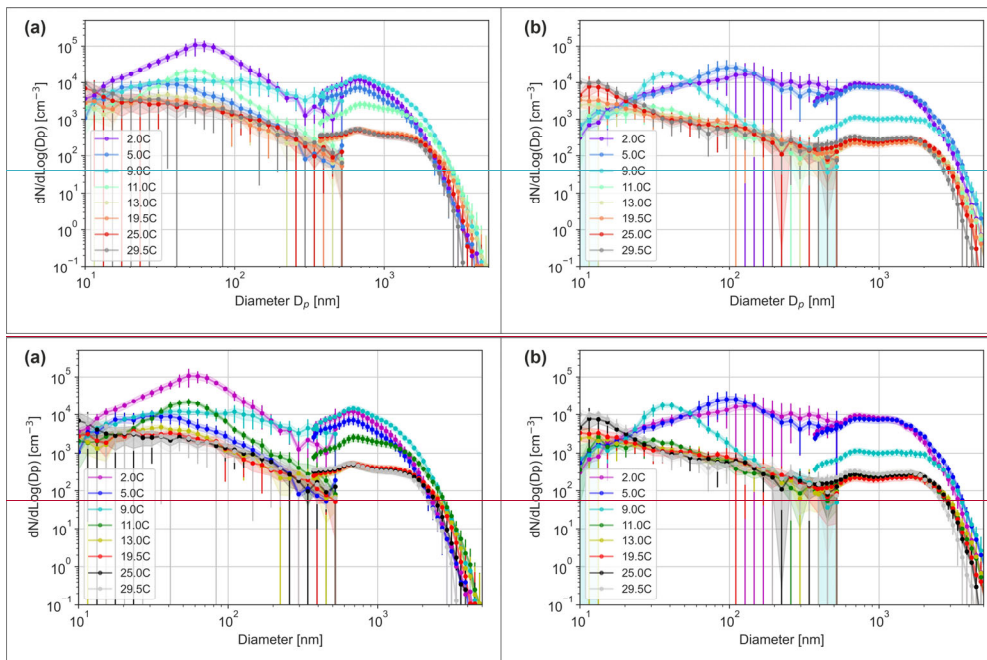


Figure 9. Temperature- dependent aerosol size distributions for Baltic (a) and Mediterranean (b) sea water bubbled at 0.8 L min⁻¹ measured with DMPS (circles) and APS (diamonds).

The Mediterranean Sea water, the particle size distribution has increased particle concentrations at $D_{p,sizes}$ <1000 nm, which can be observed at low temperatures. The effect seems more pronounced than for artificial NaCl-solutions. However, the distributions retract to a single baseline at temperatures > 11 °C.

The results for the Baltic Sea water show high similarity to the results for artificial NaCl- solutions. Low temperatures exhibit increased concentrations at all size ranges, yet the peak for 100 nm < D_p < 1000 nm is less evident.

The difference between the panels can also be related to the salinity effect: the Baltic water has about 0.93 % salt, whereas Mediterranean has ~3 %. In full agreement with the salinity tests NaCl-solution, the distributions and the total particle production is very similar, being sometimes even higher for the less saline water of Baltic Sea. However, direct comparison may be inaccurate because the biological content of these seas is very different, which can affect the water surface properties, bubble lifetime, and aerosol generation.

4. Discussion

A usual challenge of laboratory studies is to demonstrate their representativeness for real-life conditions. It is also important to compare how the parameters, such as droplet size distribution, incidence,

temperature, and salinity dependency, reflect those found in natural aerosols in environmental conditions (Blot et al., 2013; Clarke et al., 2006; de Leeuw and Cohen, 2013; Lewis and Schwartz, 2004; Mårtensson et al., 2003, 2010; Sellegri et al., 2006) (Blot et al., 2013; Clarke et al., n.d.; de Leeuw and Cohen, 2013; Lewis and Schwartz, 2004; Mårtensson et al., 2003; Mårtensson et al., 2010; Sellegri et al., 2006). In the next subsections, the observed dependencies are also verified against basic physical considerations.

4.1. Does the lab experiment represent the reality?

This question can be approached indirectly, by comparing with results from earlier chamber studies with different setups (Christiansen et al., 2019; Fuentes et al., 2010; Leifer et al., 2003; Mårtensson et al., 2003, 2010; Rastelli et al., 2017; Schwier et al., 2015; Stokes et al., 2013) (Christiansen et al., 2019; Fuentes et al., 2010; Leifer et al., 2003; Mårtensson et al., 2003; Prather et al., 2013; Rastelli et al., 2017; Schwier et al., 2015).

In particular, supporting the representativeness of the above results, the experiments of (Fuentes et al., 2010) (Fuentes et al. (2010) (compared two ways of generating bubbles: plunger and filters of porous media), and (Sellegri et al., 2006) (Sellegri et al. (2006) (water jet and sintered glass filters) concluded that a bubbling tank with a water jet system can closely mimic the actual oceanic distribution of the emitted bubbles and aerosols. A similar conclusion was also made by Mårtensson et al. (2003) for air filters. The later study is quite similar to the generated bubbles, similar to the current setup one.

An uncertainty, however, comes from the narrower range of the bubble size in this current study (Figure 2 Fig. 1). Since the film-droplet features are mostly determined by the bubble lifetime and produced by large bubbles (larger than ~2mm in diameter (Lewis and Schwartz, 2004)), the bubble size should have limited effect on the sub-µm particles. But the jet droplets can be affected by the very low fraction of sub-mm bubbles. That would result in lower production (a few tens of %) of droplets about 0.3-1 µm in diameter (Cipriano and Blanchard, 1981; Deane and Stokes, 2002; Jiang et al., 2022; Wang et al., 2017), which is an uncertainty of the current experiment.

The effect of water composition on SSA emission is more complicated. (Christiansen et al., 2019) (Christiansen et al. (2019) presented a systematic variability of the produced SSA flux in relation to water temperature and bubbling method, as well as a non-linear correlation of total particle number concentration with the water phytoplankton mass. It is expected that the sea water chemical composition and the organic and inorganic fractions can be significant for the bubble production method and the forming aerosols formation. An evidence of water chemical composition being the controlling parameter of sea water emission was presented by Nielsen and Bilde (2020). Therefore, confirmed replicability of our main conclusions made for from the artificial NaCl solution experiments to the Mediterranean and

Field Code Changed

Formatted: Finnish

Formatted: Finnish

Baltic Sea water is a significant factor supporting the representativeness of the obtained results for real water. (Jiang et al., 2022)

4.3.4.2. The bubbles lifetime

One of the key parameters controlling the aerosol production is the lifetime of the bubbles in the foam. This is not a directly measurable parameter, but it can be derived from the bubble size and the foam area. The foam area at the water surface is controlled by the dynamic equilibrium between the bubble supply to the surface and the foam deterioration due to the bubble burst. In the experiment, the foam area was always small enough to ensure a single layer of bubbles at the surface. Then the equilibrium leads to a simple equation for the foam lifetime:

$$(3) \quad \frac{dA}{dt} = \frac{F}{h} - \tau^{-1}A = 0$$

$$\tau = \frac{hA}{F}$$

Here A is foam area, h is foam thickness, F is air flow rate, τ is bubble lifetime.

Combining Eq. (2) from the Section 3.1.2 and (3), we obtain the dependence of the foam lifetime on the air flow rate:

$$(4) \quad \tau = \frac{hA_0}{F} \left(\frac{F}{F_0} - 1 \right)^{2/3}$$

which is applicable for $F > F_0$ when there is a sufficient area of the foam to measure.

For the bubble air flow below 1 L min^{-1} , a simpler linear relation (Figure 3Fig-2) leads to:

$$(5) \quad \tau = \frac{h\alpha F}{F} = h\alpha,$$

where α is the slope of the linear relation of A and F shown in Figure 3Fig-2.

From the Eq. (5), if the foam thickness h is a constant equal to the bubble diameter in all experiments, the bubble lifetime is also the same in all experiments. For the air flows in Figure 3Fig-2, - 0.01, 0.2, 0.8 and 1.5 L min^{-1} and the corresponding mean bubble size, - the lifetime will be 1.3, 0.9, 0.8, and 0.5 sec, respectively. These values, especially for the low flow rates, are very harmonious with the estimates of the detailed study of Poulain et al. (2018), who suggested a range between 0.7 and 1.5 seconds for water at the room temperature. They also corroborate with the laboratory experiments of Anguelova and Huq (2017), who investigated dependence of bubble properties on salinity varying over a very wide range and showed very limited dependence but substantial fluctuations of all parameters.

580 The Eqs.(4) - (5) can be generalized to relate the foam thickness to the flow rate. The foam gets thicker with the increase of the air flow due to bubble coagulation, the importance of which grows with the foam area. As a result, at high flow rates, large bubbles are produced on the water surface and the bubble size distribution extends towards the large sizes, as seen in ~~Fig.~~ Figure 22~~1~~.

4.4.4.3. Bubble generation

585 Comparison with the bubble sizes and lifetime observed in other lab studies and in open sea shows that the results of our experiment generally agrees with other studies based on air-generated bubbles but deviate more from the setups based on water jet-generated bubbles, but also provide some important refinements.

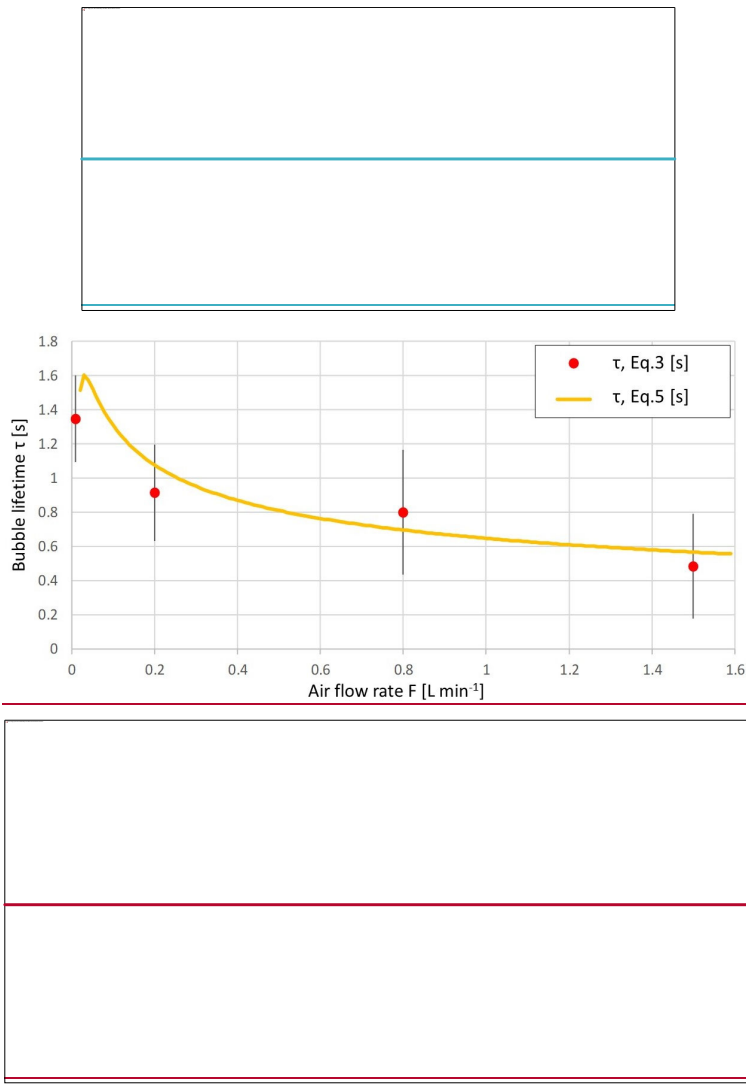


Figure 10. Bubble lifetime, derived from the observed foam area and mean bubble size with Eq. (33), approximation of the Eq. (4) assumes the foam thickness of 7 mm.

The data suggest that the lifetime of the bubbles is at-within the range of 0.5 – 1.5 seconds at room temperature (20°C), regardless the water salinity. The values for the MQ water practically do not differ from those for the MQ with added salt, coinciding with conclusions of Anguelova and Huq (2017). This result, however, is in contradiction with theoretical expectation of Lorenceau and Rouyer (2020), who argued that individual bubbles on the surface of pure water should break within a few milliseconds. The practical result of that study, nevertheless, showed stability of the bubble size and its dependency of the surface tension. Using an alcohol-water mixture, the authors obtained the same 7 mm for the bubble

diameter for pure water ($\gamma=73 \text{ mN m}^{-1}$) and 5.6 mm for the 12% ethanol admixture ($\gamma=46.5 \text{ mN m}^{-1}$). The explanation for the apparent contradiction with the theoretical lifetime is probably in that the MQ water, being “clean” from the biological standpoint, still contains substantial amount of impurities controlling the bursting process (LaFranchi et al., 2003; Poulain et al., 2018).

The obtained results revealed the specificity of natural water samples, both from Mediterranean and Baltic Sea. They have much larger variability of the foam area than the artificial water. In most cases, the foam area was also larger than for artificial salty water samples, but the bubble sizes showed practically no variability being about 7 mm for practically all flow rates. Since the experiment included the artificial water samples with salinity corresponding to each of the natural samples, the large foam area and the long bubble lifetime should be attributed to the organic content in the natural water. In particular, the organics tend to form a thin film on the water surface, thus altering both surface tension and viscosity of the foam-forming water. This assumption is indirectly supported by the similarity of the bubble sizes of natural and artificial water: the same 7 mm were reported in most experiments for all salinities. Since the bubbles are formed deep in the water, same sizes indicate that the surface tension inside the water body is not substantially different between the samples, i.e. it is the surface layer properties that control the bubble lifetime, just as observed in real-life observations.

4.5.4.4. Salinity effect

Water salinity can affect the particle spectra via two mechanisms. Firstly, higher salt content would result in larger crystals after the same-size droplets get dry. Secondly, the droplet sizes depend on features of the bursting bubbles, i.e., the deciding parameters will be water viscosity, surface tension, and bubble lifetime.

The first phenomenon leads to a simple relation: two identical droplets with different salt content S_1 and S_2 , but otherwise identical, would result in crystals with proportional volumes V_1 and V_2 and corresponding effective-dry diameters D_1 and D_2 :

$$(6) \quad \frac{S_1}{S_2} = \frac{V_1}{V_2} = \frac{D_1^3}{D_2^3}, \quad D_2 = D_1 \left(\frac{S_1}{S_2} \right)^{1/3}$$

Eq. (6) describes the log-homogeneous shift of the whole spectrum with regard to particle diameter. Owing to the cubic-root dependence, the effect is modest. For instance, even a change of salinity from 0.1 M to 0.8 M (already wider than outside both the tested and realistic ranges) would just double the particle diameters with the corresponding shift of the $\partial N / \partial \log D_p$ spectrum to the right. From Figure 5Fig-4, one can see that for sub-micron particles the changes would be indeed small because the size distribution slope is small. The effect will be significant only for: (i) particles coarser than $1 \mu\text{m}$ where the slope of the distribution is large, (ii) for very low salinities, owing to the S_2 in denominator of Eq. (6).

The second phenomenon is more complicated but presumably small: the variations of water viscosity and surface tension are within 10% for the realistic salinity range (Kalová and Mareš, 2018; Wang et al., 2018; Wen et al., 2018). It is also visible in Figure 2Fig-1, where bubble sizes (controlled by surface tension) show no sensitivity to salinity. The only noticeable impact could originate from bubble lifetime, which is sensitive to the abundance of the impurities in the water (Poulain et al., 2018). The higher concentration of salt should lead to the shorter bubble lifetime and the thicker bursting film of the bubbles, in turn leading to larger and fewer particles produced by the film bursting.

These expectations agree with Figure 6Fig-5, which shows the spectra for different salinities normalized with that of $S_{ref} = 0.6$ M (the highest tested). The lower salinity indeed led to fewer coarse ($> 1 \mu\text{m}$) particles, up to a factor of a few times for $S \geq 0.2$ M but with much sharper reduction for low salinities. For very small (< 20 nm) particles, there is some reduction as well, whereas the range from 20 nm to 200 nm demonstrated some increase. In the MQ-water session, the number of particles was not enough for reliable observations, especially for coarse aerosols, which were produced in very small numbers (Figure 5Fig-4).

4.6.4.5. Temperature effect

The effect of temperature is arguably the most controversial in the literature. Many studies show substantial impact of T_w on aerosol production, [mostly often](#) reporting a rise in colder conditions but differ widely in details.

Our results suggested that the dependence exists only for sub-10 °C conditions with practically no effect above that temperature (Figure 11). Warming the water from +2°C to +10 °C leads to [a](#) 10-fold reduction of the aerosol production. These are in [close a](#) quantitative agreement with Zábory et al. (2012), who tested several artificial solutions and Arctic Ocean water arriving at the same dependencies as registered in our experiment: 10 °C threshold and 10-fold change of production flow between 2 °C and 10 °C. They also reported a rise of a fraction of very small particles ($D_p < 0.25 \mu\text{m}$), in agreement with our results (Figure 7 - Figure 9, Figure 11Fig-76, Fig-98, Fig-110). However, the details of the size distribution [spectrum](#) were different: Zábory et al. (2012) showed [some a](#) sharp [rise-peak](#) of the distribution at $D_p \sim 200$ nm with about-twice lower values before and after. They also reported a general decline of the production from 100nm towards smaller particle sizes. In our results, on the contrary, the particles with D_p of 10 nm-20 nm were dominant in almost all experiments.

[A s](#)Strong dependence of aerosol production on water temperature was observed by Nielsen and Bilde (2020), who analysed individual bubbles and showed that the number of particles per bubble burst differs more than 10-fold between 0 °C and 19 °C, varying from a factor of 2-3 up to 20-30 for different artificial solutions and natural sea water samples. Conditions of their experiments and presentation of the results

do not allow for firm conclusions but certain non-linearity of the dependencies around 10 °C can be noticed as well.

In contrast with those results, as well as with the conclusions of the current study, several publications did not report substantial changes of the dependencies at 10°C, or they are not evident from the results. In particular, a widely cited work (Mårtensson et al., 2003) did not show this dependence rather suggesting some not well-explained jumps for cold-water conditions(Sofiev et al., 2011). In particular, it was suggested that there are: (i) a decrease of production of super-0.1 µm particles in colder water, (ii) a strong difference between produced aerosol size spectra throughout the whole tested temperature range: 25 °C, 15 °C, and 0 °C, (iii) the sub-zero conditions showed the same production as $T_w=0$ °C (see the analysis of Sofiev et al. (2011), who quantified these dependencies). However, some elements of that setup were criticized by Lewis and Schwartz (2004) and later by Witek et al. (2016), who pointed out at a too high temperature sensitivity of the aerosol production. The origin of the differences remained unexplained.

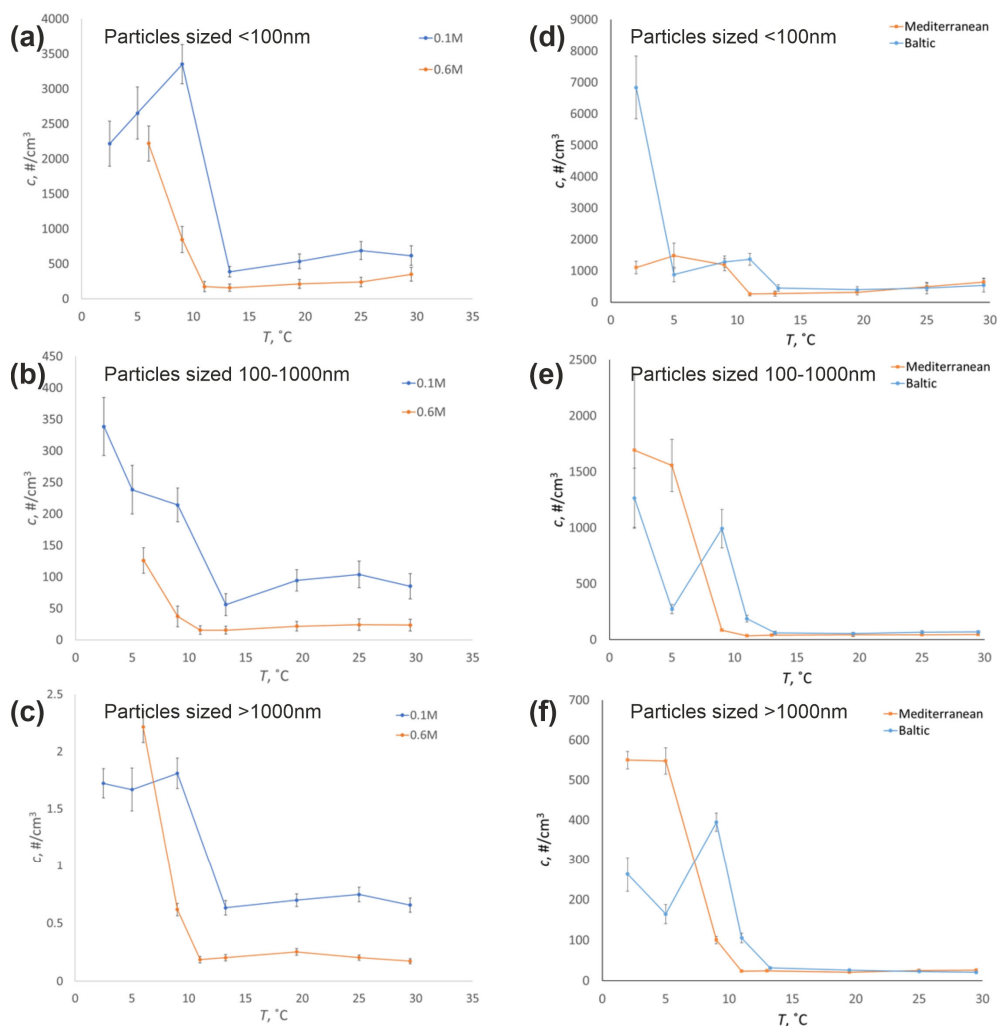


Figure 11. Temperature dependence on particle concentration for aerosols sized below 100 nm (panels (a) and (d)), from 100 to 1000 nm (panels (b) and (e)), and above 1000 nm (panels (c) and (f)) for 0.1M and 0.6M NaCl-solutions ((a)-(c)) and Mediterranean- and Baltic sea water ((d)-(f)) bubbled at 0.8 L min⁻¹.

The most direct contradiction of our experiment and the above results are with the work of Mårtensson et al. (2003), who suggested (i) decrease of production of super-0.1 μm particles in colder water, (ii) reported the strong difference between produced aerosol size spectra throughout the whole tested temperature range: 25 °C, 15 °C, and 0 °C. The sub-zero conditions appeared the same as $T_w=0$ °C (see the analysis of Sofiev et al. (2011), who quantified these dependencies). Some elements of the experimental setup were criticized by Lewis and Schwartz (2004) and later by Witek et al. (2016), who pointed out at too high temperature sensitivity of the aerosol production, but the origin of the differences remains unexplained.

A recent experiment of Christiansen et al. (2019) compared two different ways of generating the bubbles – a diffuser, comparatively similar to our setup, and a plunger pumping the water from the bottom of the tank to its top and forcing it through a nozzle located [a few](#) tens of centimetres above the water level causing a waterfall. These two setups produced radically different results. The diffuser setup qualitatively agreed with our conclusions but did not show the 10 °C threshold. But plunger, showing different ~~t~~[tendencies](#), manifested a clear minimum of production at 9-10 °C, above which the coarse particle outflow was not temperature-dependent. However, the installation used high air and water flows, thus potentially disturbing the dispersal of small aerosols, and possibly adding particles produced by the waterfall itself.

Bubble generation setup with plunging jet was also used in experiment of Salter et al. (2014). In their study, the ~10 °C threshold was observed as a significant shift in bubble size spectra towards smaller sizes. The dependence of total particle concentration on temperature was strong below 10 °C and insignificant above 10 °C.

[In view of this ambiguity, the temperature experiment has been repeated many times with different setups, all firmly showing the above effect. Therefore, we conclude that this finding probably reflects the actual dependencies, despite no studies that reported it \(including this one\) came up with plausible theoretical explanations.](#)

5. Conclusions

We have built a new sea spray production chamber and characterized its performance in a set of ~~fully~~ controlled laboratory experiments. Characterization was done with detailed measurements of the bubble generation and aerosol formation processes. The stability of the glass chamber was demonstrated in repeated multiple experiments varying the bubble-generating flow rate, water temperature and salinity. The material of the chamber, its compact size and [a possibility to sterilize, make it suitable for future studies](#) ~~offer potential for studying sea microlayer and of the~~ effects of biological composition on SSA formation ~~at various locations~~.

The flow rate-varying experiments covered the range of setups, from releasing individual bubbles one-by-one with intervals longer than their lifetime at the surface, and up to intense air flows forming air jets at the exit of the underwater capillary and [a](#) wide foam at the water surface. ~~The w~~Water ~~and~~ salinity experiments were performed with [the](#) moderate [air](#) flow rate and covered the realistic conditions: salinity from fresh (MQ) water up to [0.6](#) M of NaCl and temperature from 2 °C up to ~~25~~[29](#) °C. Experiments were also made with natural water from Mediterranean and Baltic Seas.

The experiments quantified the dependencies of aerosol production on the main environmental conditions and manifested two important refinements, which differ from the sea salt parameterizations broadly used in the models today. In particular, they showed modest dependence of aerosol production on the water

salinity (even very clean MQ water resulted in ~~high~~noticeable particle ~~numbers~~flow, albeit predominantly of ~10 nm size). Secondly, the dependence on temperature manifested a saturation effect: for <10 °C cold water, lower temperature led to stronger sub-micron aerosol production, whereas above that threshold no dependence was found in any of the experiments.

The obtained dependencies were accompanied with theoretical considerations, which supported and explained the findings, also showing good quantitative agreement.

These results generally agree with recent studies on sea salt aerosol generation but point out at (i) necessity of better theoretical understanding of the differences in SSA generation in different experimental setups, which are mainly proclaimed but rarely explained; (ii) need for a review of the sea salt parameterizations currently adapted in many modern atmospheric and oceanic models.

6. Author contributions

E.A., N.S.A., J. D., J.K., D.H.B., A.-P. H., R.K. and M.S. planned the experiments and participated in setting up the chamber system; S.S., E.A., N.S.A., A.E.H., E.V. and A.-P. H. performed the measurements; S.S., E.A., A.E.H., A.-P. H. and M.S. analysed the data; S.S., E.A., N.S.A., A.E.H. and M.S. wrote the manuscript draft; S.S., E.A., N.S.A., J. D., M.R., J.K., D.H.B., A.-P. H., R.K. and M.S. reviewed and edited the manuscript; all authors have read and approved the paper.

7. Competing interests

The authors declare that they have no conflict of interest.

8. Acknowledgements

The authors would like to thank the staff of Laborexin and Ari Salminen at SMC. Henri Servomaa, Esa Hautajoki, Virpi Mäntylä and Olli Moisio are thanked for excellent technical assistance. This study was supported by Academy of Finland Postdoctoral Grant 309570 for N.S.A. and the Academy of Finland Flagship funding (grant No. 337552) Theoretical analysis of the results was supported by the GLORIA project of Academy of Finland (grant No. 310372) and Horizon 2020 EMERGE project (grant No 874990).

9. Appendices

9.1. Appendix A. Notations

A / A_0	surface area covered by bubbles for a given / reference air flows F / F_0
CCN	Cloud Condensation Nuclei
CPC	Condensation Particle Counter

D_a	aerodynamic diameter of a particle
D_b	diameter of a bubble at the breakout plane
D_{cap}	inner diameter of a capillary output nozzle, 1.2 mm
D_e	electrical mobility diameter of a particle
D_p	observed dry-particle diameter after all corrections
DMA	Differential Mobility Analyzer
DMPS	Differential Mobility Particle Sizer
F / F_0	air flow / reference air flow of the bubble generator
g	gravity acceleration
h	thickness of foam at the water surface
γ	water surface tension
IN	Ice Nuclei
N	number concentrations of particles in the air, [particles m ⁻³]
OPS	Optical Particle Sizer
RH	relative humidity
RMSE	square-root of the mean squared error
ρ_a	air density
ρ_w	water reference density, estimated to be 1000 kg m ⁻³
ρ_p	salt particle density, assumed to be 2600 kg m ⁻³
S	water salinity, NaCl concentration in the solution
T	water temperature, °C
τ	foam lifetime (s)
χ	shape factor as defined in Khlystov et al. (2004)
V_b	volume of bubble

9.2. Appendix B. Chamber system

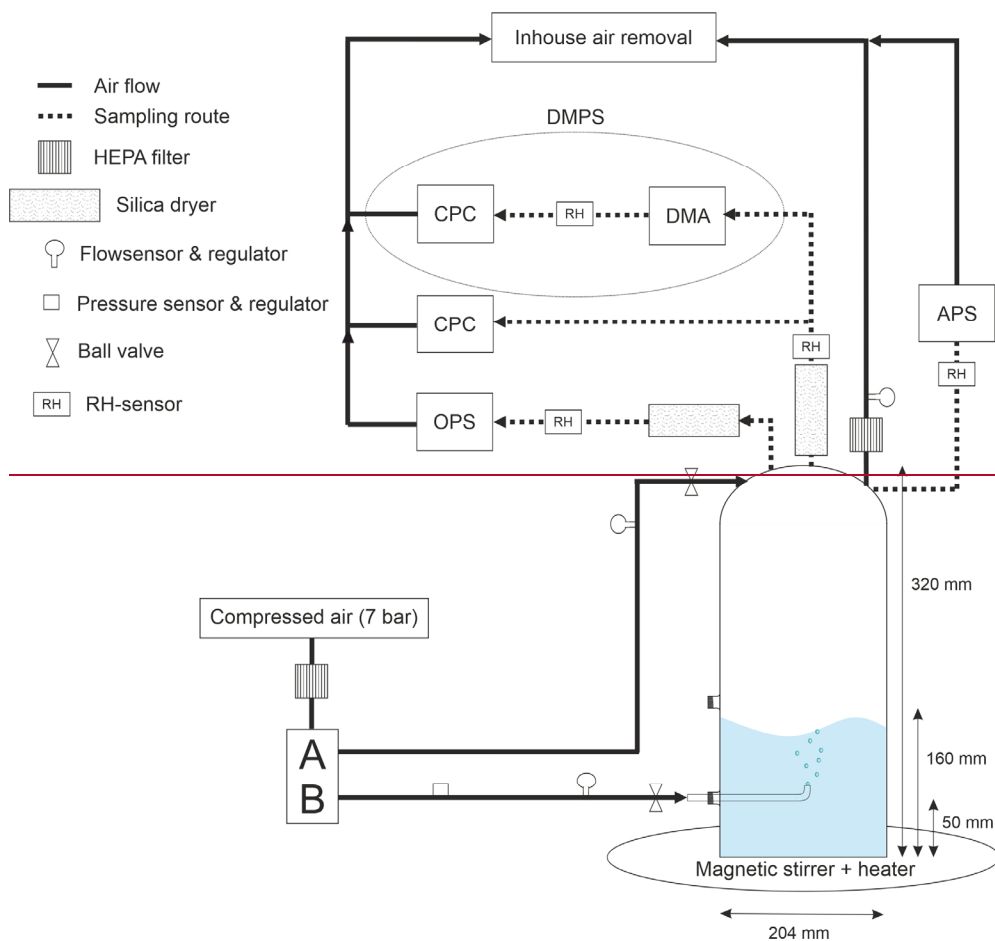
The chamber system presented in [Figure B.1](#) ~~Fig. B1~~ receives inhouse compressed air produced with oil free compressor (WisAIR WIS25V, Worthington Creyssensac, Italy) and refrigeration dryer (DEiT 032, MTA S.p.A., Italy) with dew point of +3 °C (equals [to a](#) maximum of ~5-6 g of water per cubic meter). The compressed air passes through one \varnothing 0.01 μ m filter (Friulair X Series) and two \varnothing 1 μ m filters (Friulair S Series) before reaching the pressure regulator. Sequential filtering ensures the air purity, free from particles and micro-organisms. The pressure regulator lowers the pressure of incoming air from 7 bar to 2 bar, after which the air goes through HEPA-filter and reaches the manifold.

Manifold guides the air to two separate lines, flush (A) and bubble (B). Bubble line is connected to the chamber through a capillary, which is used for creating bubbles. ~~The r~~[The r](#)ate of the bubble formation can be regulated by air flow controller attached to [the](#) bubble line. ~~The f~~[The f](#)lush line is connected on the chamber lid and is run for purifying the chamber and maintaining [the atmospheric pressure-balance](#). ~~The~~[The](#) ~~a~~[A](#)ir flow of the flush line is also regulated.

Total concentration and size distribution of the particles ~~released by the bubble bursting~~ are analyzed [by](#) ~~in~~[in](#)-optical particle sizer (OPS), condensation particle counter (CPC), Aerodynamic Particle Sizer (APS) and differential mobility particle sizer (DMPS). DMPS consists of ~~two equipment~~ differential particle analyzer (DMA) and CPC. Silica driers are inserted in the system before ~~the air reaches~~ the particle

analyzers ~~for only calculating dry particles size~~ and the RH meters are installed to monitor ~~this~~ that the analysed particles are all dry. All the particle counters and the exhaust air tube on the lid are connected to

775 the inhouse air removal, assuring that no air is released into the indoors.



Formatted: Keep with next

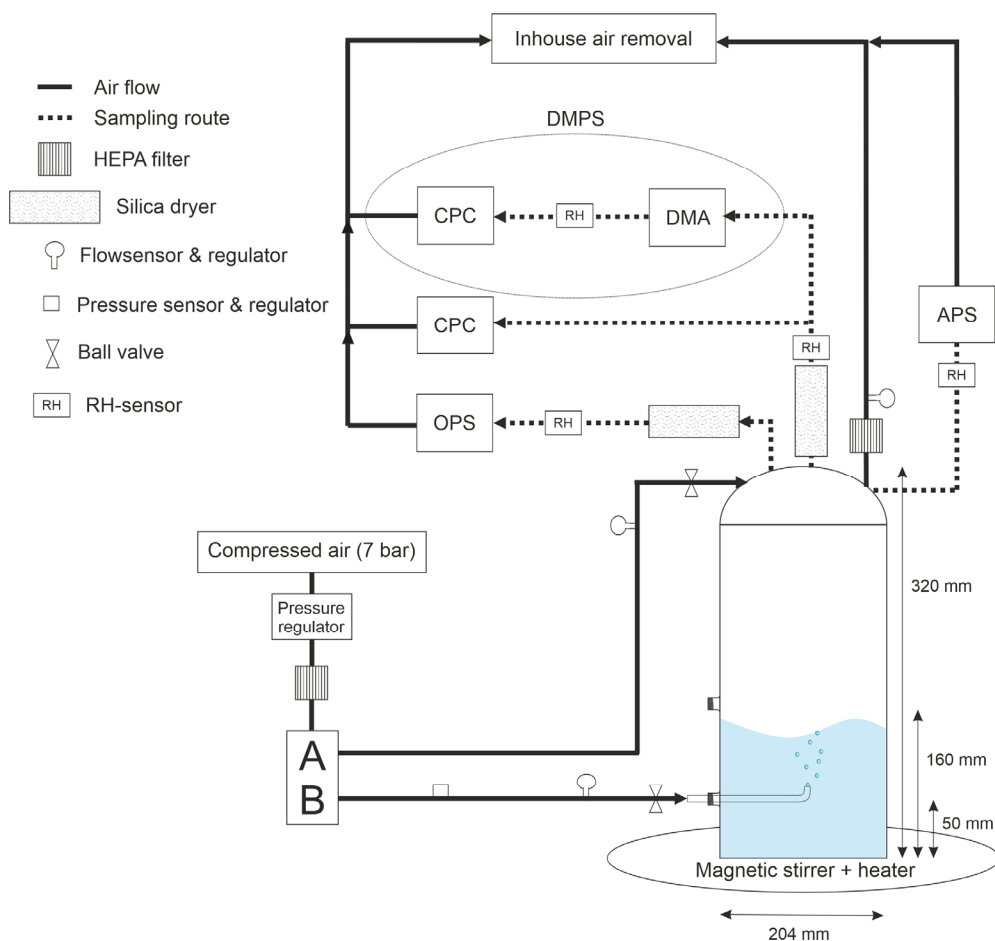


Figure B.1. Schematic representation of the bubble chamber.

Fig. B1 Schematic representation of the bubble/aerosol chamber system.

Formatted: Caption

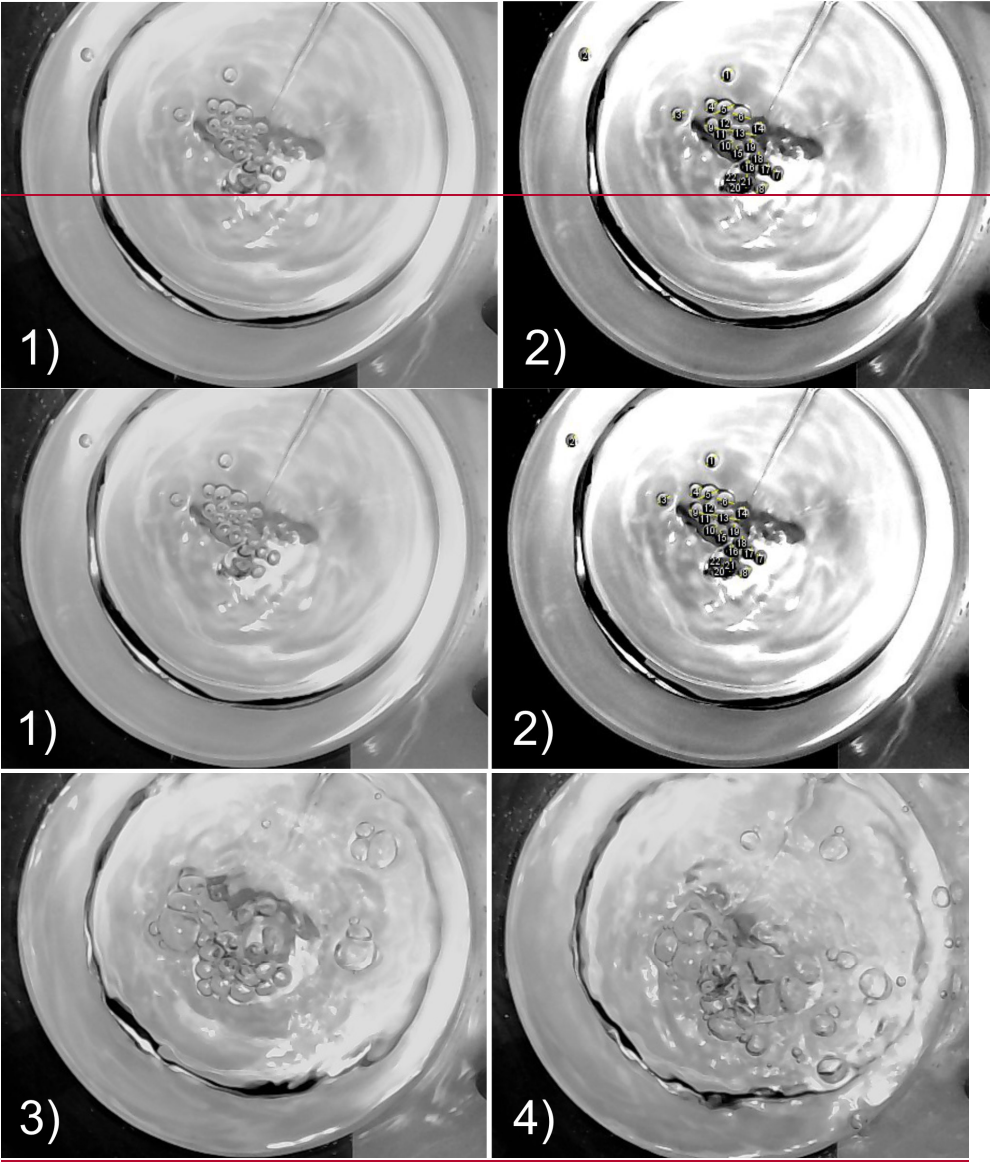


Figure C 1. One of five images taken at 0.2 L min⁻¹, 0.8 L min⁻¹ and 1.5 L min⁻¹ flow rates and *S*=0.1*M* water salinity from above the bubbling area. 1) The initial picture at 0.2 L min⁻¹. 2) Modified image at 0.2 L min⁻¹ with the bubble diameters selected and numbered. 3) The initial picture at 0.8 L min⁻¹. 4) The initial picture at 1.5 L min⁻¹.

Fig. C1. One of five images taken at 0.2 L min⁻¹ flow rate and *S*=0.1*M* water salinity. 1) The initial picture from above the bubbling area. 2) Modified image with the bubbles diameters selected and numbered.

790 Protocol for still-image analysis:

1. Change the image type to 8-bit. Larger pixel size allows easier determination of the significant colour changes, edges of the bubbles ~~more get~~ clearer. Adjust brightness and contrast for clarity.
2. Select the diameter of the chamber by straight line-tool, then set the scale for the diameter to be 204 mm (Analyze → Set Scale).
- 795 3. Using the ROI manager tool and the straight-line tool, select all the bubble diameters. Use “Measure”-command from the ROI tool to determine ~~the lengths of~~ the diameters.

10. References

- Aller, J.Y., Kuznetsova, M.R., Jahns, C.J., Kemp, P.F., 2005. The sea surface microlayer as a source of viral and bacterial enrichment in marine aerosols. *Journal of Aerosol Science* 36, 801–812. <https://doi.org/10.1016/j.jaerosci.2004.10.012>
- 800 Anguelova, M., Huq, P., 2017. Effects of Salinity on Surface Lifetime of Large Individual Bubbles. *JMSE* 5, 41. <https://doi.org/10.3390/jmse5030041>
- Blanchard, D.C., 1989. The Ejection of Drops from the Sea and Their Enrichment with Bacteria and Other Materials: A Review. *Estuaries* 12, 127. <https://doi.org/10.2307/1351816>
- 805 Blanchard, D.C., 1978. Jet drop enrichment of bacteria, virus, and dissolved organic material. *PAGEOPH* 116, 302–308. <https://doi.org/10.1007/BF01636887>
- Blanchard, D.C., Woodcock, A.H., 1980. THE PRODUCTION, CONCENTRATION, AND VERTICAL DISTRIBUTION OF THE SEA-SALT AEROSOL. *Ann NY Acad Sci* 338, 330–347. <https://doi.org/10.1111/j.1749-6632.1980.tb17130.x>
- 810 Blot, R., Clarke, A.D., Freitag, S., Kapustin, V., Howell, S.G., Jensen, J.B., Shank, L.M., McNaughton, C.S., Brekhovskikh, V., 2013. Ultrafine sea spray aerosol over the southeastern Pacific: open-ocean contributions to marine boundary layer CCN. *Atmos. Chem. Phys.* 13, 7263–7278. <https://doi.org/10.5194/acp-13-7263-2013>
- Borghini, M., Bryden, H., Schroeder, K., Sparnocchia, S., Vetrano, A., 2014. The Mediterranean is becoming saltier. *Ocean Sci.* 10, 693–700. <https://doi.org/10.5194/os-10-693-2014>
- 815 Brooks, S.D., Thornton, D.C.O., 2018. Marine Aerosols and Clouds. *Annu. Rev. Mar. Sci.* 10, 289–313. <https://doi.org/10.1146/annurev-marine-121916-063148>
- Burrows, S.M., Ogunro, O., Frossard, A.A., Russell, L.M., Rasch, P.J., Elliott, S.M., 2014. A physically based framework for modeling the organic fractionation of sea spray aerosol from bubble film Langmuir equilibria. *Atmos. Chem. Phys.* 14, 13601–13629. <https://doi.org/10.5194/acp-14-13601-2014>
- 820 Charlson, R.J., Lovelock, J.E., Andreae, M.O., Warren, S.G., 1987. Oceanic phytoplankton, atmospheric sulphur, cloud albedo and climate. *Nature* 326, 655–661. <https://doi.org/10.1038/326655a0>
- | ~~Christiansen, S., Salter, M.E., Gorokhova, E., Nguyen, Q.T., Bilde, M., 2019. Sea Spray Aerosol Formation: Laboratory Results on the Role of Air Entrainment, Water Temperature, and Phytoplankton Biomass. *Environ. Sci. Technol.* 53, 13107–13116. <https://doi.org/10.1021/acs.est.9b04078>~~
- 825 Cipriano, R.J., Blanchard, D.C., 1981. Bubble and aerosol spectra produced by a laboratory ‘breaking wave.’ *J. Geophys. Res.* 86, 8085. <https://doi.org/10.1029/JC086iC09p08085>
- 830 Clarke, A.D., Owens, S.R., Zhou, J., 2006. An ultrafine sea-salt flux from breaking waves: Implications for cloud condensation nuclei in the remote marine atmosphere 14.
- Cochran, R.E., Laskina, O., Trueblood, J.V., Estillore, A.D., Morris, H.S., Jayarathne, T., Sultana, C.M., Lee, C., Lin, P., Laskin, J., Laskin, A., Dowling, J.A., Qin, Z., Cappa, C.D., Bertram, T.H., Tivanski, A.V., Stone, E.A., Prather, K.A., Grassian, V.H., 2017. Molecular Diversity of Sea Spray Aerosol Particles: Impact of Ocean Biology on Particle Composition and Hygroscopicity. *Chem* 2, 655–667. <https://doi.org/10.1016/j.chempr.2017.03.007>
- 835

Formatted: Swedish (Sweden)

- de Leeuw, G., Cohen, L.H., 2013. Bubble Size Distributions on the North Atlantic and North Sea, in: Donelan, M.A., Drennan, W.M., Saltzman, E.S., Wanninkhof, R. (Eds.), *Geophysical Monograph Series*. American Geophysical Union, Washington, D. C., pp. 271–277. <https://doi.org/10.1029/GM127p0271>
- 840 Deane, G.B., Stokes, M.D., 2002. Scale dependence of bubble creation mechanisms in breaking waves. *Nature* 418, 839–844. <https://doi.org/10.1038/nature00967>
- Drenckhan, W., Saint-Jalmes, A., 2015. The science of foaming. *Advances in Colloid and Interface Science* 222, 228–259. <https://doi.org/10.1016/j.cis.2015.04.001>
- 845 Forestieri, S.D., Moore, K.A., Martinez Borrero, R., Wang, A., Stokes, M.D., Cappa, C.D., 2018. Temperature and Composition Dependence of Sea Spray Aerosol Production. *Geophys. Res. Lett.* 45, 7218–7225. <https://doi.org/10.1029/2018GL078193>
- Fuentes, E., Coe, H., Green, D., de Leeuw, G., McFiggans, G., 2010. Laboratory-generated primary marine aerosol via bubble-bursting and atomization. *Atmos. Meas. Tech.* 3, 141–162. <https://doi.org/10.5194/amt-3-141-2010>
- 850 Grythe, H., Ström, J., Krejci, R., Quinn, P., Stohl, A., 2014. A review of sea-spray aerosol source functions using a large global set of sea salt aerosol concentration measurements. *Atmos. Chem. Phys.* 14, 1277–1297. <https://doi.org/10.5194/acp-14-1277-2014>
- Jiang, X., Rotily, L., Villiermaux, E., Wang, X., 2022. Submicron drops from flapping bursting bubbles. *Proc. Natl. Acad. Sci. U.S.A.* 119, e2112924119. <https://doi.org/10.1073/pnas.2112924119>
- 855 Kalová, J., Mareš, R., 2018. The temperature dependence of the surface tension of water. Pilsen, Czech Republic, p. 020007. <https://doi.org/10.1063/1.5081640>
- King, S.M., Butcher, A.C., Rosenoern, T., Coz, E., Lieke, K.I., de Leeuw, G., Nilsson, E.D., Bilde, M., 2012. Investigating Primary Marine Aerosol Properties: CCN Activity of Sea Salt and Mixed Inorganic–Organic Particles. *Environ. Sci. Technol.* 46, 10405–10412. <https://doi.org/10.1021/es300574u>
- 860 Kouznetsov, R., Sofiev, M., 2012. A methodology for evaluation of vertical dispersion and dry deposition of atmospheric aerosols. *Journal of Geophysical Research* 117. <https://doi.org/doi:10.1029/2011JD016366>
- 865 Laakso, L., Mikkonen, S., Drebs, A., Karjalainen, A., Pirinen, P., Alenius, P., 2018. 100 years of atmospheric and marine observations at the Finnish Utö Island in the Baltic Sea. *Ocean Sci.* 14, 617–632. <https://doi.org/10.5194/os-14-617-2018>
- LaFranchi, B., W., Knight, M., Petrucci, G., A., 2003. Leaching as a source of residual particles from nebulization of deionized water. *Journal of Aerosol Science* 34, 1589–1594. [https://doi.org/10.1016/S0021-8502\(03\)00188-5](https://doi.org/10.1016/S0021-8502(03)00188-5)
- 870 Latham, J., Smith, M.H., 1990. Effect on global warming of wind-dependent aerosol generation at the ocean surface. *Nature* 347, 372–373. <https://doi.org/10.1038/347372a0>
- Leifer, I., de Leeuw, G., Cohen, L.H., 2003. Optical Measurement of Bubbles: System Design and Application. *J. Atmos. Oceanic Technol.* 20, 1317–1332. [https://doi.org/10.1175/1520-0426\(2003\)020<1317:OMOBSD>2.0.CO;2](https://doi.org/10.1175/1520-0426(2003)020<1317:OMOBSD>2.0.CO;2)
- 875 Lewis, E.R., Schwartz, S.E., 2004. Sea salt aerosol production: mechanisms, methods, measurements and models ; a critical review, *Geophysical monograph*. American Geophysical Union, Washington, DC.
- Lorenceanu, E., Rouyer, F., 2020. Lifetime of a single bubble on the surface of a water and ethanol bath. *Phys. Rev. Fluids* 5, 063603. <https://doi.org/10.1103/PhysRevFluids.5.063603>
- 880 Mårtensson, E.M., Nilsson, E.D., de Leeuw, G., Cohen, L.H., Hansson, H.-C., 2003. Laboratory simulations and parameterization of the primary marine aerosol production: THE PRIMARY MARINE AEROSOL SOURCE. *J. Geophys. Res.* 108, n/a-n/a. <https://doi.org/10.1029/2002JD002263>
- 885 Mårtensson, M., Tunved, P., Korhonen, H., Nilsson, D., 2010. The role of sea-salt emissions in controlling the marine Aitken and accumulation mode aerosol: a model study. *Tellus B: Chemical and Physical Meteorology* 62, 259–279. <https://doi.org/10.1111/j.1600-0889.2010.00465.x>
- Maxwell, J.C., 1874. Plateau on soap bubbles. *Nature* 10, 119–121.
- Monahan, E.C., Spiel, D.E., Davidson, K.L., 1986. A model of marine aerosol generation via whitecaps and wave disruption, in: *Oceanic Whitecaps*. D. Reidel, Norwell, Mass., pp. 167–193.
- 890

Formatted: Swedish (Sweden)

Formatted: Swedish (Sweden)

Formatted: Swedish (Sweden)

Formatted: Swedish (Sweden)

- Moore, M.J.K., Furutani, H., Roberts, G.C., Moffet, R.C., Gilles, M.K., Palenik, B., Prather, K.A., 2011. Effect of organic compounds on cloud condensation nuclei (CCN) activity of sea spray aerosol produced by bubble bursting. *Atmospheric Environment* 45, 7462–7469. <https://doi.org/10.1016/j.atmosenv.2011.04.034>
- 895 Nielsen, L.S., Bilde, M., 2020. Exploring controlling factors for sea spray aerosol production: temperature, inorganic ions and organic surfactants. *Tellus B: Chemical and Physical Meteorology* 72, 1–10. <https://doi.org/10.1080/16000889.2020.1801305>
- Pátek, J., Součková, M., Klomfar, J., 2016. Generation of Recommendable Values for the Surface Tension of Water Using a Nonparametric Regression. *J. Chem. Eng. Data* 61, 928–935. <https://doi.org/10.1021/acs.jced.5b00776>
- 900 Plateau, J.A.F., 1873. *Statique Expérimentale Et Théorique Des Liquides Soumis Aux Seules Forces Moléculaires*. Nabu Press (reproduced copy, March 8, 2010).
- Poulain, S., Villermaux, E., Bourouiba, L., 2018. Ageing and burst of surface bubbles. *J. Fluid Mech.* 851, 636–671. <https://doi.org/10.1017/jfm.2018.471>
- 905 Prather, K.A., Bertram, T.H., Grassian, V.H., Deane, G.B., Stokes, M.D., DeMott, P.J., Aluwihare, L.I., Palenik, B.P., Azam, F., Seinfeld, J.H., Moffet, R.C., Molina, M.J., Cappa, C.D., Geiger, F.M., Roberts, G.C., Russell, L.M., Ault, A.P., Baltusaitis, J., Collins, D.B., Corrigan, C.E., Cuadra-Rodriguez, L.A., Ebben, C.J., Forestieri, S.D., Guasco, T.L., Hersey, S.P., Kim, M.J., Lambert, W.F., Modini, R.L., Mui, W., Pedler, B.E., Ruppel, M.J., Ryder, O.S., Schoepp, N.G., Sullivan, R.C., Zhao, D., 2013. Bringing the ocean into the laboratory to probe the chemical complexity of sea spray aerosol. *Proceedings of the National Academy of Sciences* 110, 7550–7555. <https://doi.org/10.1073/pnas.1300262110>
- 910 Rastelli, E., Corinaldesi, C., Dell’Anno, A., Lo Martire, M., Greco, S., Cristina Facchini, M., Rinaldi, M., O’Dowd, C., Ceburnis, D., Danovaro, R., 2017. Transfer of labile organic matter and microbes from the ocean surface to the marine aerosol: an experimental approach. *Sci Rep* 7, 11475. <https://doi.org/10.1038/s41598-017-10563-z>
- 915 Rosknecht, G.F., Elliot, W.P., Ramsey, F.L., 1973. The size distribution and inland penetration of sea salt particles. *Journal of applied meteorology* 12, 825–830.
- Salter, M.E., Nilsson, E.D., Butcher, A., Bilde, M., 2014. On the seawater temperature dependence of the sea spray aerosol generated by a continuous plunging jet. *J. Geophys. Res. Atmos.* 119, 9052–9072. <https://doi.org/10.1002/2013JD021376>
- 920 Schneider, C.A., Rasband, W.S., Eliceiri, K.W., 2012. NIH Image to ImageJ: 25 years of image analysis. *Nat Methods* 9, 671–675. <https://doi.org/10.1038/nmeth.2089>
- Schwier, A.N., Rose, C., Asmi, E., Ebling, A.M., Landing, W.M., Marro, S., Pedrotti, M.-L., Sallon, A., Iuculano, F., Agusti, S., Tsiola, A., Pitta, P., Louis, J., Guieu, C., Gazeau, F., Sellegri, K., 2015. Primary marine aerosol emissions from the Mediterranean Sea during pre-bloom and oligotrophic conditions: correlations to seawater chlorophyll & from a mesocosm study. *Atmos. Chem. Phys.* 15, 7961–7976. <https://doi.org/10.5194/acp-15-7961-2015>
- 925 Sellegri, K., O’Dowd, C.D., Yoon, Y.J., Jennings, S.G., de Leeuw, G., 2006. Surfactants and submicron sea spray generation. *J. Geophys. Res.* 111, D22215. <https://doi.org/10.1029/2005JD006658>
- 930 Soares, J., Sofiev, M., Geels, C., Christensen, J.H., Andersson, C., Tsyro, S., Langner, J., 2016. Impact of climate change on the production and transport of sea salt aerosol on European seas. *Atmospheric Chemistry and Physics Discussions* 1–52. <https://doi.org/10.5194/acp-2015-1056>
- 935 Sofiev, M., Soares, J., Prank, M., de Leeuw, G., Kukkonen, J., 2011. A regional-to-global model of emission and transport of sea salt particles in the atmosphere. *Journal of Geophysical Research* 116. <https://doi.org/10.1029/2010JD014713>
- Stokes, M.D., Deane, G.B., Prather, K., Bertram, T.H., Ruppel, M.J., Ryder, O.S., Brady, J.M., Zhao, D., 2013. A Marine Aerosol Reference Tank system as a breaking wave analogue for the production of foam and sea-spray aerosols. *Atmos. Meas. Tech.* 6, 1085–1094. <https://doi.org/10.5194/amt-6-1085-2013>
- 940 Textor, C., Schulz, M., Guibert, S., Kinne, S., Balkanski, Y., Bauer, S., Bernsten, T., Berglen, T., Boucher, O., Chin, M., Dentener, F., Diehl, T., Easter, R., Feichter, H., Fillmore, D., Ghan, S., Ginoux, P., Gong, S., Grini, A., Hendricks, J., Horowitz, L., Huang, P., Isaksen, I., Iversen, T., Kloster, S., Koch, D., Kirkeva, A., Kristjansson, J.E., Krol, M., Lauer, A., Lamarque, J.F., Liu, X., Montanaro,

- 945 V., Myhre, G., Penner, J., Pitari, G., Reddy, S., Seland, Ø., Stier, P., Takemura, T., Tie, X., 2006. Analysis and quantification of the diversities of aerosol life cycles within AeroCom. *Atmos. Chem. Phys.* 37.
- Tseng, R.-S., Viechnicki, J.T., Skop, R.A., Brown, J.W., 1992. Sea-to-air transfer of surface-active organic compounds by bursting bubbles. *J. Geophys. Res.* 97, 5201. <https://doi.org/10.1029/91JC00954>
- 950 Tyree, C.A., Hellion, V.M., Alexandrova, O.A., Allen, J.O., 2007. Foam droplets generated from natural and artificial seawaters. *J. Geophys. Res.* 112, D12204. <https://doi.org/10.1029/2006JD007729>
- Vazquez, A., Sanchez, R.M., Salinas-Rodríguez, E., Soria, A., Manasseh, R., 2005. A look at three measurement techniques for bubble size determination. *Experimental Thermal and Fluid Science* 30, 49–57. <https://doi.org/10.1016/j.expthermflusci.2005.03.018>
- 955 Viskari, T., Asmi, E., Virkkula, A., Kolmonen, P., Petäjä, T., Järvinen, H., 2012. Estimation of aerosol particle number distribution with Kalman Filtering – Part 2: Simultaneous use of DMPS, APS and nephelometer measurements. *Atmos. Chem. Phys.* 12, 11781–11793. <https://doi.org/10.5194/acp-12-11781-2012>
- 960 Wang, X., Chen, C., Binder, K., Kuhn, U., Pöschl, U., Su, H., Cheng, Y., 2018. Molecular dynamics simulation of the surface tension of aqueous sodium chloride: from dilute to highly supersaturated solutions and molten salt. *Atmos. Chem. Phys.* 18, 17077–17086. <https://doi.org/10.5194/acp-18-17077-2018>
- Wang, X., Deane, G.B., Moore, K.A., Ryder, O.S., Stokes, M.D., Beall, C.M., Collins, D.B., Santander, M.V., Burrows, S.M., Sultana, C.M., Prather, K.A., 2017. The role of jet and film drops in controlling the mixing state of submicron sea spray aerosol particles. *Proc Natl Acad Sci USA* 114, 6978–6983. <https://doi.org/10.1073/pnas.1702420114>
- 965 Wang, Z., King, S.M., Freney, E., Rosenoern, T., Smith, M.L., Chen, Q., Kuwata, M., Lewis, E.R., Pöschl, U., Wang, W., Buseck, P.R., Martin, S.T., 2010. The Dynamic Shape Factor of Sodium Chloride Nanoparticles as Regulated by Drying Rate. *Aerosol Science and Technology* 44, 939–953. <https://doi.org/10.1080/02786826.2010.503204>
- 970 Wen, J., Shi, K., Sun, Q., Sun, Z., Gu, H., 2018. Measurement for Surface Tension of Aqueous Inorganic Salt. *Front. Energy Res.* 6, 12. <https://doi.org/10.3389/fenrg.2018.00012>
- Wiedensohler, A., Birmili, W., Nowak, A., Sonntag, A., Weinhold, K., Merkel, M., Wehner, B., Tuch, T., Pfeifer, S., Fiebig, M., Fjårraa, A.M., Asmi, E., Sellegri, K., Depuy, R., Venzac, H., Villani, P., Laj, P., Aalto, P., Ogren, J.A., Swietlicki, E., Williams, P., Roldin, P., Quincey, P., Hüglin, C., Fierz-Schmidhauser, R., Gysel, M., Weingartner, E., Riccobono, F., Santos, S., Gröning, C., Faloon, K., Beddows, D., Harrison, R., Monahan, C., Jennings, S.G., O'Dowd, C.D., Marinoni, A., Horn, H.-G., Keck, L., Jiang, J., Scheckman, J., McMurry, P.H., Deng, Z., Zhao, C.S., Moerman, M., Henzing, B., de Leeuw, G., Löschau, G., Bastian, S., 2012. Mobility particle size spectrometers: harmonization of technical standards and data structure to facilitate high quality long-term observations of atmospheric particle number size distributions. *Atmos. Meas. Tech.* 5, 657–685. <https://doi.org/10.5194/amt-5-657-2012>
- 980 Wilson, T.W., Ladino, L.A., Alpert, P.A., Breckels, M.N., Brooks, I.M., Browse, J., Burrows, S.M., Carslaw, K.S., Huffman, J.A., Judd, C., Kilhau, W.P., Mason, R.H., McFiggans, G., Miller, L.A., Nájera, J.J., Polishchuk, E., Rae, S., Schiller, C.L., Si, M., Temprado, J.V., Whale, T.F., Wong, J.P.S., Wurl, O., Yakobi-Hancock, J.D., Abbatt, J.P.D., Aller, J.Y., Bertram, A.K., Knopf, D.A., Murray, B.J., 2015. A marine biogenic source of atmospheric ice-nucleating particles. *Nature* 525, 234–238. <https://doi.org/10.1038/nature14986>
- 985 Witek, M.L., Diner, D.J., Garay, M.J., 2016. Satellite assessment of sea spray aerosol productivity: Southern Ocean case study: Sea Spray Emission: Satellite Assessment. *J. Geophys. Res. Atmos.* 121, 872–894. <https://doi.org/10.1002/2015JD023726>
- Woolf, D.K., Bowyer, P.A., Monahan, E.C., 1987. Discriminating between the film drops and jet drops produced by a simulated whitecap. *J. Geophys. Res.* 92, 5142. <https://doi.org/10.1029/JC092iC05p05142>
- 995 Zábori, J., Matisāns, M., Krejci, R., Nilsson, E.D., Ström, J., 2012. Artificial primary marine aerosol production: a laboratory study with varying water temperature, salinity, and succinic acid

Formatted: Finnish

Formatted: Swedish (Sweden)

Formatted: Swedish (Sweden)

concentration. Atmos. Chem. Phys. 12, 10709–10724. <https://doi.org/10.5194/acp-12-10709-2012>

1000