

Improved spectral processing for a multi-mode pulse compression Ka/Ku-band cloud radar system

Han Ding^{1,2}, Haoran Li^{2,3}, Liping Liu²

¹Collaborative Innovation Center on Forecast and Evaluation of Meteorological Disasters, Nanjing University of Information Science and Technology, Nanjing, China

²State Key Laboratory of Severe Weather, Chinese Academy of Meteorological Sciences, Beijing, China

³Institute for Atmospheric and Earth System Research/Physics, Faculty of Science, University of Helsinki, Helsinki, Finland

Correspondence to: Haoran Li (lihr@cma.gov.cn) and Liping Liu (liulp@cma.gov.cn)

Abstract. Cloud radars are widely used in observing clouds and precipitation. However, the raw data products of cloud radars are usually affected by multiple factors, which may lead to misinterpretation of cloud and precipitation processes. In this study, we present a Doppler-spectra-based data processing framework to improve the data quality of a multi-mode pulse-compressed Ka/Ku radar system. Firstly, non-meteorological signal, close to the ground was identified with enhanced Doppler spectral ratios between different observing modes. Then, for the Doppler spectrum affected by the range sidelobe due to the implementation of the pulse compression technique, the characteristics of the probability density distribution of the spectral power were used to identify the sidelobe artifacts. Finally, the Doppler spectra observations from different modes were merged via the shift-then-average approach. The new radar moment products were generated based on the merged Doppler spectrum data. The presented spectral processing framework was applied to radar observations of a stratiform precipitation event, and the quantitative evaluation shows good performance of clutter/sidelobe suppression and spectral merging.

Deleted: clutter

Deleted: the abnormal distribution of the probability density of the Doppler spectrum in presence of range sidelobe due to the implementation of the pulse compression technique was identified and used to separate sidelobe artifacts

Deleted: results

1. Introduction

Clouds and precipitation are important for the Earth's energy budget and the hydrological cycle. Over the past few decades, a great deal of effort has been made to understand the microphysics and dynamics of clouds and precipitation. As remote sensing instruments, cloud radars operating in millimeter-wavelengths have shown their unique role in addressing the observational gaps in clouds and precipitation (Kollias et al., 2002; Stephens et al., 2002; Illingworth et al., 2007; Li and Moisseev, 2020). Compared with weather radars, shorter wavelengths of cloud radars allow for the

Deleted: a

detection of small hydrometeors without the use of high-power transmitters and large antennas. Meanwhile, their compact size enables good portability, making them a powerful tool for observing clouds and weak precipitation (Kollias et al., 2007).

Most cloud radars work at the vertically pointing mode, and it is a common practice to use time-height plots to present the traditional radar data, such as equivalent reflectivity factor (Z_e), mean Doppler velocity (V), and spectrum width (σ). These data products are also known as the moments of radar Doppler spectrum which is the decomposition of the radar return as a function of Doppler velocities (Kollias et al., 2011a). Radar Doppler spectra observations have been used to retrieve the dynamics (Shupe et al., 2008; Li et al., 2021; e.g., Zhu et al., 2021) and microphysics (Luke and Kollias, 2013; Tridon et al., 2013; Verlinde et al., 2013; Kalesse et al., 2016; e.g., Kneifel et al., 2016) of clouds and precipitation. However, preprocessing of radar Doppler spectra observations can be challenging due to a list of issues:

1) The contamination of non-meteorological signals, The non-meteorological echoes produced by stationary targets (e.g., buildings, trees or terrain) and moving targets (e.g., insects, birds, or power lines moving in the wind) are unwanted but often detected by radar. Narrow-beam-width antenna makes the cloud radars less susceptible to non-meteorological signals, in contrast to high-power long-wavelength radars (Kollias et al., 2007). To discriminate clutter echoes from clouds, some algorithms, e.g. based on the coherent characteristics of clouds (Kalapureddy et al., 2018), the Bayesian method (Hu et al., 2021), or polarimetric measurements (Martner and Moran, 2001), have been proposed. But such approaches fall short when meteorological signals are mixed with clutter. Alternatively, cloud/precipitation signals can be discriminated from clutter properly, if the clutter removal is made in the radar Doppler spectrum (Luke et al., 2008; Moisseev and Chandrasekar, 2009; Williams et al., 2018; Williams et al., 2021). For example, for stationary ground clutter signals characterized by the Doppler velocity of around 0 m s^{-1} , an interpolation method can be performed to remove the clutter after identifying the narrow spectral peaks (Williams et al., 2018). Williams et al. (2021) have also used spectral linear depolarization ratio observations to identify asymmetric insect clutters. To the best of our knowledge, there is a lack of a non-polarimetric spectral approach to separate such non-stationary clutter signals.

2) The advance in solid-state amplifiers has led to the development of solid-state cloud radars.

Deleted: clutter

Deleted: clutter

Deleted: well reserved

70 Solid-state transmitters are typically smaller, more reliable and more affordable than traditional vacuum tube type transmitters, but their output power is much lower than other types of tubes. To enhance the detection sensitivity, modulated wide pulses are transmitted and then compressed into short pulses after being received. The pulse compression techniques are widely employed to achieve high range resolutions, however, significant range sidelobe can be present around radar echoes. This may have a negligible impact on Z_e , but can severely affect the estimation of higher-order radar moments (Liu and Zheng, 2019). To remove the sidelobe artifacts introduced by the pulse compression, a simple threshold approach (Moran et al., 1998; Clothiaux et al., 1999) has been applied to radar moment products. To alleviate the range sidelobe contamination, the processors of Atmospheric Radiation Measurement (ARM) Millimeter Wavelength Cloud Radars (MMCRs) have been upgraded by reducing the number of code bits used in pulse-compressed modes (Moran et al., 80 2002). In China, pulse compression cloud radars are nationally deployed and sidelobe contamination is one of the major issues in radar data products. The threshold approach has been applied to the Doppler spectrum observations by Liu and Zheng (2019). However, the best power threshold always needs to be adjusted according to the received signal, and sometimes several rounds of processing are required. 85

Deleted: a wider pulse is used which on the other hand decreases the range resolution

3) Multiple operating modes have been employed to address the trade-off among the sensitivity, spatial and temporal resolution, Nyquist velocity, and maximum unambiguous range. For modes with pulse compression techniques, the emission of long pulses leads to an increase in radar blind range, limiting the capability of mapping the vertical distributions of clouds. However, the blind zones and sensitivities of different observing modes are different, leaving complicated data processing procedures in radar applications. 90

Deleted: tting

In this study, we present an improved data processing framework to tackle the above-mentioned issues. Section 2 describes the radars used in this study, followed by clutter and sidelobe artifact removal algorithms in Sect. 3. The merging of Doppler spectra observations at different modes is given in Sect. 4. The new data processing framework was applied to radar observations of a stratiform precipitation event and the results are quantitative evaluated in Sect. 5. Conclusions are presented in Sect. 6. 95

Deleted: analyzed

2. Data

The vertically pointing Ka/Ku dual-frequency radar used in this paper has been operating at the Longmen Observation Station (114.27°E, 23.79°N, 80.3 m above mean sea level) in southeastern China since 2019. The operating parameters of four observation modes are shown in Table 1. Both radars are implemented with solid-state transmitters and pulse compression techniques. The maximum detection range is 15 km and the range resolution of 30 m. The antenna beamwidth is 0.9° for the Ku-band radar and 0.35° for the Ka-band. Both radars operate with four modes: boundary layer mode (mode 1), cirrus mode (mode 2), precipitation mode (mode 3), and middle-level mode (mode 4). These four modes are characterized by different pulse compression ratios, numbers of coherent integration as well as incoherent integration. The boundary layer mode aims to detect low-level clouds and a narrower pulse waveform as well as a larger number of coherent integrations is used to improve the detection ability. The cirrus mode uses the pulse compression technique to improve the sensitivity to detect clouds with weaker radar echoes at higher altitudes. The middle-level mode also uses pulse compression techniques but less coherent integration times. The precipitation mode is characterized by a larger unambiguous range and velocity for rainfall observations. ~~These four different modes are routinely cycled in operations~~ and each mode takes 7 s to finish the observation. The radar Doppler spectra are computed using a 256-point fast Fourier transform (FFT). The resolutions of spectral velocity at all modes are interpolated into 0.072 m s⁻¹ (Ka-band radar) and 0.09 m s⁻¹ (Ku-band radar). The spectral noise floor is determined using the Hilderbrand-Sekhoh method (Hildebrand and Sekhon, 1974). It should be noted that due to the use of long pulses in mode 2 and mode 4 for both radars, the heights below 2 km and 1 km are blind zones, respectively. ~~The blind zones of modes 1 and 3 are 30 m.~~ In addition, the Nyquist velocity of the Ka-band radar at mode 1 is 4.6 m s⁻¹, and the observed Doppler spectrum easily gets aliased therefore the Ka-band radar observations at mode 1 were not used.

~~The cross-calibration between different modes is necessary before comparing observations at different modes. We selected the stable and weak precipitation cases, and the systematic offset in reflectivity observations was identified. Then the reflectivity observations at mode 3 were used as the reference to calibrate radar data at other modes. Note that we did not do the attenuation calibration, since it is out of the scope of this study.~~

Table 1. Operating parameters for the Ka/Ku-band cloud radar system deployed at Longmen

Deleted: latitudes

Deleted: There are four different modes routinely cycled in operations...

Deleted: The data used in the study from different modes have been cross-calibrated. We selected the stable and weak precipitation cases and statistics the reflectivity differences detected by different modes, then the Doppler velocity power spectral density was calibrated according to the statistical results.... Therefore, Therefore,

Moved (insertion) [4]

Deleted: Therefore,

Deleted: from

Deleted: statistic

Deleted: the

Deleted: differences

Deleted: detected by different modes,

Deleted: t

Deleted: the Doppler velocity power spectral density was calibrated according to the statistical results. After that, the power spectra densities from different modes show good agreement between each other. The consistency of meteorological signals between different modes is the prerequisite to filter clutter out by comparing the observation differences from different modes...

Formatted: Font: Bold

observation station in southeastern China.

Parameters	Mode 1 <u>Boundary</u> <u>layer mode</u>	Mode 2 <u>Cirrus</u> <u>mode</u>	Mode 3 <u>Precipitation</u> <u>mode</u>	Mode 4 <u>Middle-level</u> <u>mode</u>
Pulse width (μs)	0.2	12	0.2	6
<u>Pulse length (m)</u>	<u>60</u>	<u>3600</u>	<u>60</u>	<u>1800</u>
Range resolution (m)	30	30	30	30
Nyquist velocity of Ka-band (m s^{-1})	4.63	9.27	18.54	18.54
Nyquist velocity of Ku-band (m s^{-1})	11.48	22.97	45.95	45.95
Spectral velocity resolution of Ka-band (m s^{-1})	0.036	0.072	0.145	0.145
Spectral velocity resolution of Ku-band (m s^{-1})	0.09	0.18	0.36	0.36
Number of coherent integrations	4	2	1	1
Number of incoherent integrations	16	32	64	64
Number of points in FFT	256	256	256	256

Formatted Table

3. Clutter and range sidelobe mitigation

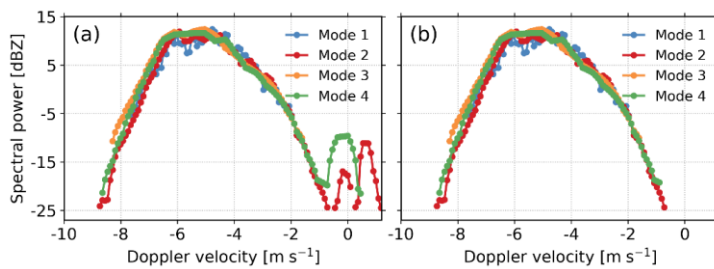
Clutter contamination is a long-standing issue in scanning and vertically pointing radar observations. Both ground clutter and insect clutter obscure the boundary layer returns, affecting the high-order moments estimated from Doppler spectra observations (Sato and Woodman, 1982). In addition, the implementation of pulse compression techniques in modes 2 and 4 usually results in significant range sidelobes around the melting layer, which does not significantly affect Z_e and V estimates, but can severely degrade the estimation of spectrum width. In this section, Ku-band radar observations are used to demonstrate the spectral processing procedure for mitigating the clutter contamination and range sidelobe.

Deleted: appliedradar

3.1 Clutter mitigation

The stationary ground clutter is usually manifested as a narrow-symmetric peak around 0 m s^{-1} (Williams et al., 2018). A commonly used approach for mitigating ground clutter signals is the interpolation of adjacent spectral powers after removing the spectral peak around 0 m s^{-1} . Williams et al. (2018) claimed that this method is also suitable for the identification and removal of insect clutters since the insect targets also produce narrow peaks in Doppler spectra observations. We have

175 tried to apply this approach to our radar data, but the performance is not as good as that of the Ka-band zenith pointing radar (KAZR) deployed at Oliktok Point, Alaska. Figure 1a shows an example of the Ku-band Doppler spectrum with clutter signals present at around 0 m s⁻¹. The clutter signals do not always present a sharp narrow peak as shown in Fig. 3 in Williams et al. (2018), and this approach does not apply to our observations. We have also found that such clutter signals appear more frequently and significantly in Ku-band radar observations than in the Ka-band.



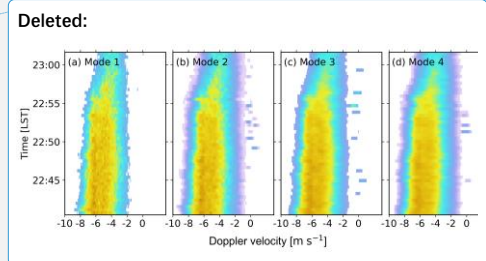
180 **Figure 1.** (a) Noise-removed Ku-band Doppler power spectrum on 6 June 2020 at 22:52:08 LST at the range of 2.34 km. (b) Same as (a) but decluttered with our clutter mitigation algorithm. **The unit of Doppler power spectral density data is mm⁶ m⁻³ (m s⁻¹)⁻¹, we simply use the unit “dBZ” here and after to denote spectral power in the dB scale.**

185 Figure 2 shows the time series of Doppler velocity spectra on 6 June 2020 from 22:40 to 23:01 LST at 2.34 km range (the same range bin as Fig. 1). The clutter signals are in the vicinity of 0 m s⁻¹ and are not continuous with time. Compared with meteorological signals, it appears that clutter echoes randomly occur with some dependence on the observing mode. The cause of such clutter signals is unclear yet and we hesitate to attribute them to insects (Williams et al., 2018) since the spectral powers at different modes deviate from each other significantly.

Deleted: for

Deleted: Figure 2 shows the time series of Doppler velocity spectra on 6 June 2020 from 22:40 to 23:01 LST at 2.34 km range (the same range bin as Fig. 1). The incoherence of clutter signals can be clearly observed, although it is close to 0 m/s sometimes, it can be identified as clutter rather than meteorological signals according to its variability. Compared with coherent meteorological signals, such clutter signals vary drastically among different observing modes (Fig. 1a). This is plausibly attributed to different compression ratios at the four modes. The cause of such clutter signals is unclear yet and we hesitate to attribute them to insects (Williams et al., (2018), since the spectral powers at different modes deviate from each other significantly.

Formatted: Font: Bold



Formatted: Superscript

Deleted: .

Formatted: English (United States)

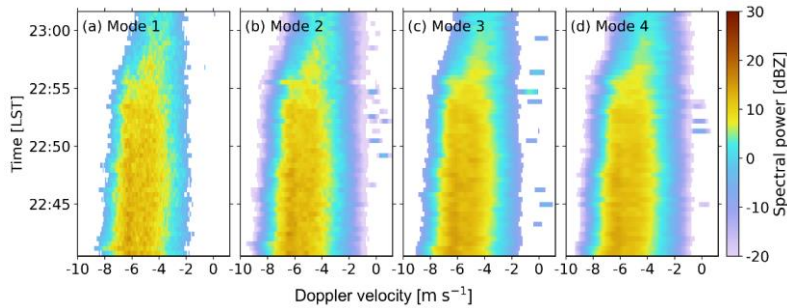


Figure 2. Time series of noise-removed Ku-band Doppler velocity spectra on 6 June 2020 from 22:40 to 23:01 LST at 2.34 km range.

Formatted: Font: Bold

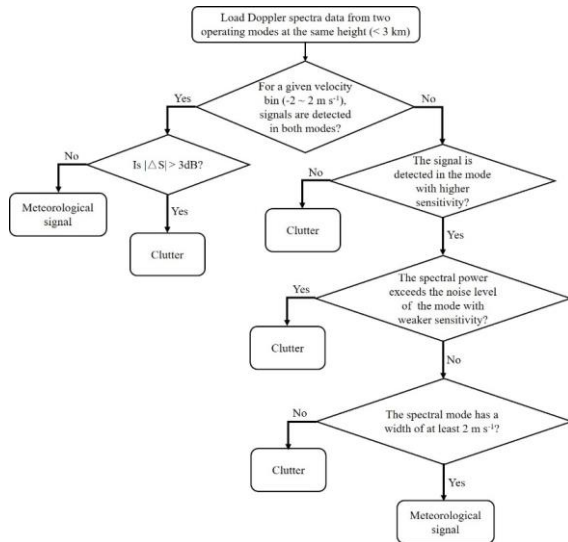
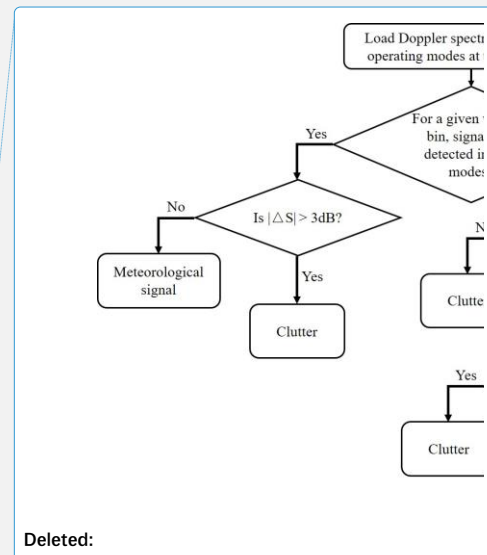


Figure 3. Flow chart of the proposed clutter identification and mitigation method.

As shown in Fig. 3, we have developed an algorithm to identify and remove clutter signals.

The algorithm is mainly based on the non-coherent nature of clutters which produces significant spectral power ratio (ΔS) between observations from different modes. The selection of the threshold is a compromise between false-alarm and miss hit. We want to preserve the meteorological signals at our best, therefore we checked the magnitudes of $|\Delta S|$ for meteorological signals. Figure A1 (Appendix) presents the statistical plot of $|\Delta S|$ for meteorological signals (height of 2 ~ 3 km and Doppler velocity of 2 ~ 5 m s^{-1}). It appears that the probability of $|\Delta S|$ tends to be flat after 3 dB, and



Deleted:

Deleted: 2

Formatted: Font: Bold

Deleted: 2

Deleted: The selection of $|\Delta S| = 3\text{ dB}$ is a compromise between the radars' observational uncertainty and the spectral ratio between different observing modes.

Formatted: Superscript

the use of 3 dB can ensure that 95.6 % of precipitation cases are well preserved (Fig. A1). Therefore, 3 dB is used in this study. If a larger threshold is employed, we expect more clutter signals will be mislabeled as precipitation. As shown in Fig. 1b, clutter signals have been successfully removed while the meteorological signals are marginally affected.

It should be noted that this method relies on observations recorded at different observing modes. However, the sensitivities of different modes are not identical. Therefore, if the clutter is presented in the most sensitive mode (e.g., mode 2) only, it cannot be filtered out with the $|\Delta S|$ method. In this case, the width of valid meteorological spectral mode is assumed to be longer than 2 m s^{-1} , otherwise it is attributed to clutter. We are aware that Shupe et al (2004) have used a width of 0.448 m s^{-1} to identify supercooled liquid water. We have tried this value, but the width of clutter present in this dual-wavelength radar system easily exceeds 1 m s^{-1} (Fig. 2). Actually, the selection of the spectrum width is similar with the use of a signal-to-noise ratio (SNR) value in noise-removal. Higher SNR means a stricter noise-removal but higher chance of losing valid signals. We have tested the width of 1, 1.5, 2, and 3 m s^{-1} (visual inspection, not shown), and found that 2 m s^{-1} can effectively remove clutter signals for both radars though very light precipitation (detected by the most sensitive mode only) can be removed as well. Admitting this potential issue, it suffices the application in rainfall. In addition, for clouds with highly variable reflectivity, the presented algorithm may mislabel them as clutter according to our assumption that meteorological signals are coherent in a round of observation (28s).

Figure 4 compares the Doppler spectrum observations before and after applying the declutter algorithm. As shown in Fig. 4a₁ and c₁, the clutter signals appear below 2 km at modes 1 and 3. For modes 2 and 4, the impact of clutter can be up to 3 km (Fig. 4b₁ and d₁). After imposing the declutter algorithm, no significant clutter signals can be detected (Fig. 4a₂, b₂, c₂, and d₂).

Deleted: ure

Deleted:

Deleted: b

Moved (insertion) [6]

Deleted: .

Moved up [6]: As shown in Fig. 1b, clutter signals have been successfully removed while the meteorological signals are marginally affected. .

Deleted: 3

Deleted: 3

Deleted: 3

Deleted: 3

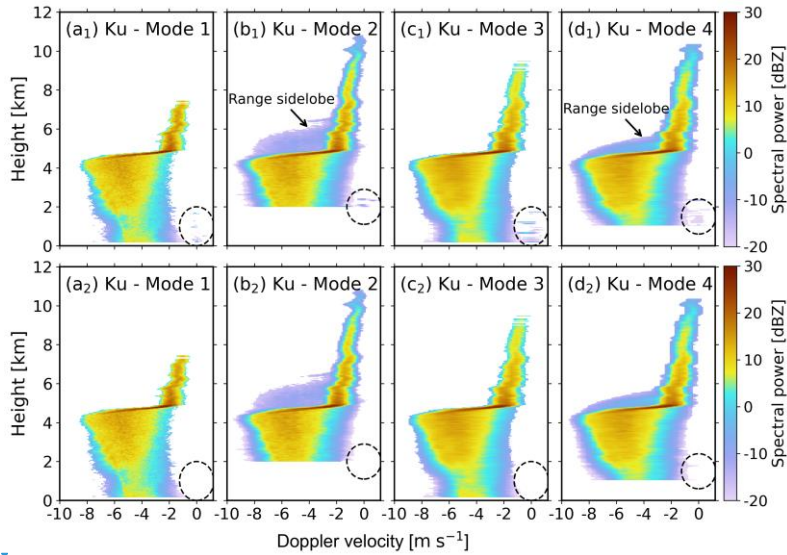


Figure 4. Top: noise-removed Ku-band Doppler power spectra on 6 June 2020 at 22:52:08 LST recorded at (a₁) mode 1, (b₁) mode 2, (c₁) mode 3, (d₁) mode 4. Bottom: decluttered observations. The dashed circles mark the clutter signals. Note that the heights below 2 km and 1 km are blind zones for modes 2 and 4, respectively.

3.2 Range sidelobe artifacts

The utilization of pulse compression usually leads to significant range sidelobe artifacts (Fig. 4b₁ and d₁) around melting layer, which can severely affect the estimates of high-order radar moments. Moran has proposed an approach that distinguishes the range sidelobe artifacts from reflectivity data using non-range-corrected return power through the power transfer function (Moran et al., 1998; Clothiaux et al., 1999). By reducing the number of code bits used in pulse compression modes, the ARM MMCRs' upgraded processor is capable of suppressing the range sidelobe effects (Moran et al., 2002). However, mitigating range sidelobe artifacts is still challenging for multi-mode pulsed-compression cloud radars in China. To improve both the radar detection performance and range resolution, Linear Frequency Modulation was used to widen the signal bandwidth when transmitting pulses in modes 2 and 4 at both Ka- and Ku-band. But, the matched pulse compression filter output exhibits sidelobe behavior, making the power of range sidelobe appear in the wrong range gates. Liu and Zheng (2019) have applied the method proposed by Moran et al. (1998) to

Deleted: LST However, one of the disadvantages of the algorithm is that since each mode has its own sensitivity, if the clutter is detected only by the most sensitive mode, then the algorithm will fail to filter it out because there are no signals from other modes to compare it with. Besides, since our algorithm is focus on the clutter signals that vary strongly from time, it is not applicable to the cases have highly variable reflectivity with time, otherwise the effectiveness of the algorithm will be considerably weakened. .

Formatted: Centered, Indent: First line: 0 ch

Deleted: 3

Formatted: Font: Bold

Deleted: 3.

Deleted: strong radar echoes

radar Doppler spectrum data to remove the range sidelobe artifacts. However, the performance of this approach depends on a given threshold, which needs to be adjusted for different scenarios.

As shown in Fig. 4b₁ and d₁, the range sidelobe associated with the strong radar echoes of the melting particles is located above the melting layer. Compared with radar Doppler spectrum observations without the sidelobe contamination (see for example Li and Moisseev, 2020), Doppler spectra above the melting layer at large velocity bins were contaminated by the range sidelobe of the echo below. The artifacts in mode 2 accumulate to higher altitudes but are weaker in spectral power (Fig. 4b₁), while mode 4 accumulates to lower altitudes and with a larger magnitude of power (Fig. 4d₁), which is caused by different pulse compression ratio and peak sidelobe ratio (the ratio of the main lobe peak power to the highest sidelobe peak power) of the two modes.

An interesting feature of the range sidelobe, caused by pulse compression is that its spectral power is much flatter than cloud and precipitation signals. Figure 5a shows the probability density functions (PDFs) of received spectral power at 2.4 km, 5.01 km, and 6.6 km, which respectively represent the liquid precipitation, Doppler spectrum contaminated by range sidelobe, and solid precipitation. For the sidelobe-contaminated Doppler spectrum, It can be seen that the range bins contaminated by range sidelobe have different spectral power distributions, the peak of the PDFs appears close to the noise level and is mostly below 15 dB above the noise level. A closer look into the radar Doppler spectra at 5.01 km (Fig. 6a) shows that the strong PDF peak in Fig. 5b is explained by the relatively flat range sidelobe signals. Here, we introduce a parameter spectral power threshold (S_{thresh}) to distinguish the range sidelobe from meteorological signals. Figure 7 shows the flowchart for the identification and removal of the range sidelobe artifacts. The procedures are briefly summarized as follows:

Deleted: In addition, we found that this method seems applicable to the Ka-band radar, but the artifact removal performance of the Ku-band radar is far inferior to that of the Ka-band...

Deleted: 3

Deleted: (

Deleted:)

Deleted:

Deleted: the sidelobe caused by the pulse compression drags a long tail in the relatively large velocity bins and the characteristics of the two tails are slightly different (Fig. 3b₁ and d₁)...

Deleted: 3

Deleted: 3

Deleted: tail

Deleted: the range sidelobe

Deleted: 4

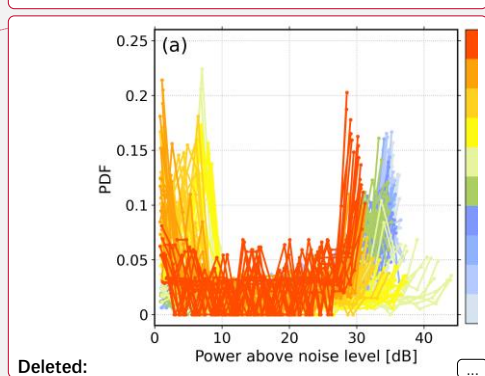
Deleted: from 2 km and 7 km. The PDFs at different heights are detectably different. For Doppler spectra without the sidelobe contamination, PDFs are relatively uniform. In contrast, for...

Deleted: 5a

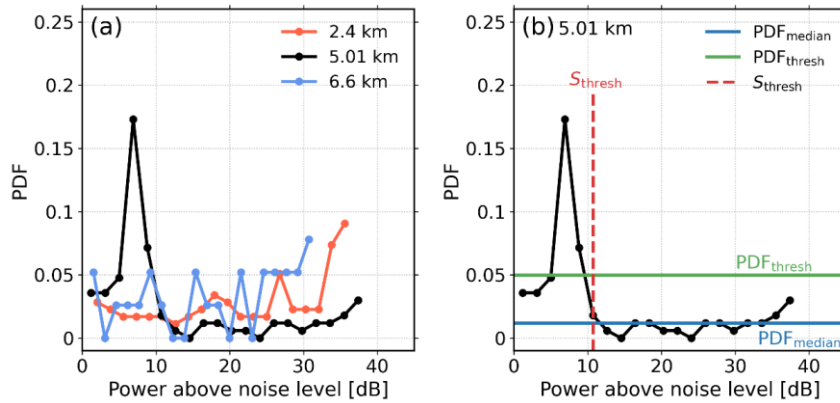
Deleted: 4a

Deleted: 6

Deleted: .



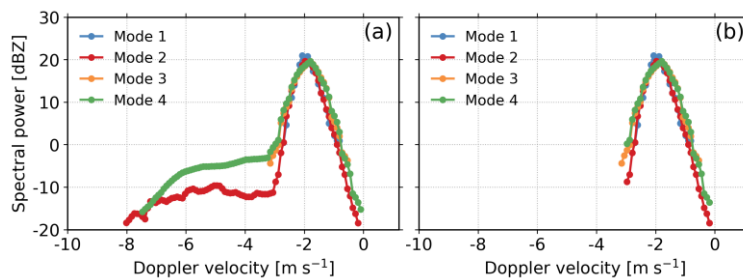
Deleted:



345 **Figure 5.** (a): PDFs of Doppler spectra from 2 km to 7 km at mode 2; (b): PDF of Doppler spectrum recorded at 5.01 km.

Formatted: Font: Bold

Deleted: 4



350 **Figure 6.** Ku-band Doppler power spectra recorded at different modes at 5.01 km on 6 June 2020 at 22:52:08 LST. (a) Noise-removed Doppler spectrum; (b) the same as (a) but after the removal of range sidelobe.

Deleted: 5

Formatted: Font: Bold

1) Sort the spectral power values above noise level in an ascending order to get a PDF curve of each Doppler spectrum;

2) Calculate the median and standard deviation (SD) of the PDFs, set $PDF_{thresh} = PDF_{median} + PDF_{SD}$; [Note that the determination of this relation is given in Appendix B.](#)

355 3) Below half of the peak power above the noise level of the Doppler spectrum, find the power bins' probability density just exceeds the PDF_{thresh} , and the corresponding spectral power is set as S_{thresh} ; **(The range of PDF_{thresh} is limited to half of the peak power above the noise level to avoid finding the PDF_{peak} corresponding to large spectral power, which makes the determined S_{thresh} corresponds well to the power of sidelobe in this way.)**

360 4) If the spectrum power with the Doppler velocity larger than the mean Doppler velocity is

below the S_{thresh} , then it is flagged as sidelobe.

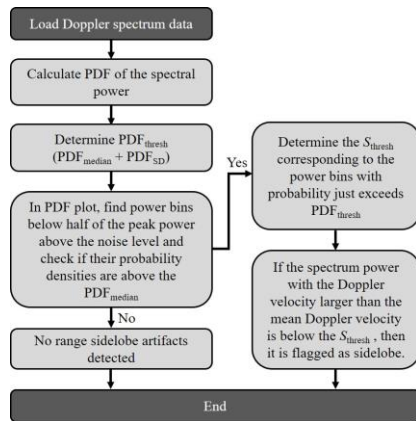


Figure 7. Flowchart of range sidelobe artifacts processing.

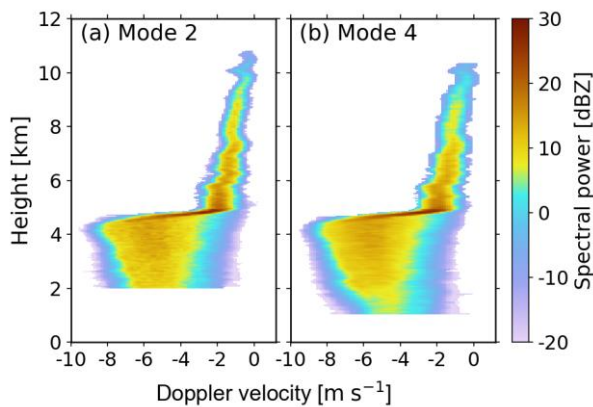


Figure 8. Doppler power spectra after removing range sidelobe at modes 2 and 4 on 6 June 2020 at 22:52:08 LST. The Doppler spectra observations before the sidelobe removal are shown in Fig.

4b₁ and **d₁**.

As shown in Fig. 5b, the range sidelobe artifacts in modes 2 and 4 have been well removed. We have applied this algorithm to the vertical profiles of Doppler spectra observations at modes 2 and 4 (Fig. **4b₁** and **d₁**). As shown in Fig. 8, the sidelobe artifacts have been well removed at modes 2 and 4.

We have compared this algorithm with the threshold method (Liu and Zheng, 2019). The range sidelobe caused by pulse compression technology appears in both the upper and lower range gates of the target bin, which is weaker compared with the echo of the target. At Ku-band, the theoretical

Deleted: 6

Formatted: Font: Bold

Deleted: 7

Formatted: Font: Bold

Deleted: 3

Deleted: 3

Deleted: 3

Deleted: 7a and 7b

Moved (insertion) [5]

Deleted: Another alternative sidelobe mitigation method mentioned in the paper is based on the theoretical power of the sidelobe to set the threshold for sidelobe identification

Deleted: T

peak sidelobe ratio (the ratio of the main lobe peak power to the highest sidelobe peak power) is 36 dB and 30 dB for mode 2 and mode 4, respectively. Figure C1 shows the comparison of sidelobe mitigation effects of the threshold method and the PDF method. The implementation of theoretical thresholds (Fig. C1a₁ and b₁) is insufficient to remove sidelobe signals. However, a smaller threshold may remove valid signals (Fig. C1a₃ and b₃). This effect is more evident in the zoomed-in plot (Fig. C2). In contrast, our algorithm is an adaptive method that efficiently removes sidelobe signals with the valid signal well preserved (Fig. C1a₄ and b₄, Fig. C2a₄ and b₄).

4. Mode merging

For multi-mode cloud radars, it is cumbersome to interpretate the radar observations recorded at four modes in operational applications. Moreover, the air motion variability and the velocity bin-to-bin spectrum power fluctuations can lead to noisy estimates of high-order spectral moments. Therefore, we have merged radar observations from different observing modes. Data from Ku-band was still taken as an example to illustrate the data merging process.

4.1 Merging of Doppler spectra recorded at different modes

Before the merging procedure, it is necessary to check the consistency of radar data at four modes. Particularly, coherent integrations were made to modes 1 and 2 (Tab.1) to improve the signal-to-noise ratio. But this step may result in the decrease of spectral power with large Doppler velocities (Liu et al., 2017; Liu and Zheng, 2019). This effect leads to the underestimation of V , which is critical in the merging process, and Z_e . Here, we evaluate this impact by comparing Z_e and V estimates at different modes. We define the differences of Z_e and V between different modes as ΔZ and ΔV , respectively, and radar observations at mode 3 (no pulse compression and only one round coherent integration were performed) were used as a reference. To compare the impact of coherence integration under various precipitation intensities, radar observations were grouped into $Z_e > 20$ dBZ and $Z_e < 10$ dBZ. Note that the Ku-band wet radome attenuation has been corrected with a collocated C-band radar (Cui et al., 2020).

In light precipitation ($Z_e < 10$ dBZ, Fig. 9a₁, b₁, and c₁), radar observations at these four modes agree with each other rather well. For precipitation cases with $Z_e > 20$ dBZ, good agreement between modes 3 and 4 can also be found (Fig. 9c₂), which is expected since the coherent integration number is one at both modes. The agreement between modes 2 and 3 seems also good (Fig. 9b₂), despite

Deleted: If the echo of the main lobe is detected correctly, then we can calculate the theoretical sidelobe power by knowing the peak sidelobe ratio. But in fact, the precipitation echoes are not isolated targets, a range gate can receive range sidelobes from several other gates at the same time.

Deleted: B

Deleted: alternative technique (

Deleted:)

Deleted: our new method (P

Deleted:) applied to the same Doppler spectra in the original

Deleted: The detailed implementation steps of the threshold

Deleted:

Deleted: ure

Deleted: B

Deleted:

Deleted:

Deleted: are

Deleted: the effect of using theoretical sidelobe power as the

Deleted:

Deleted: The significant range sidelobe can be completely

Deleted: our sidelobe mitigation method proposed in this

Deleted: that can process the spectra data in batches

Deleted: which

Deleted:

Deleted:

Deleted: .

Deleted: um

Deleted: s have been theradar

Deleted: as Ku-band

Deleted: 8

Deleted: 8b₁

Deleted: 8c₁

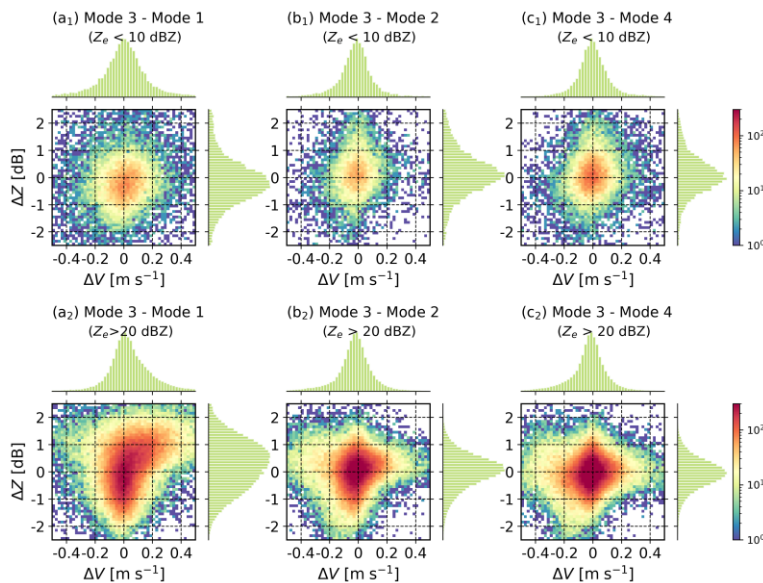
Deleted: 8c₂

Deleted: 8b₂

two rounds of coherent integration ~~being~~ made to mode 2. In Fig. 9a₂, significant biases of ΔZ and ΔV can be identified, and ΔV increases with ΔZ . This is attributed to the underestimation of spectrum powers at high Doppler velocities during the longtime coherent integration (4 rounds).

Deleted: were
Deleted: 8a₁

485 Given the results above, Ku-band Doppler spectra observations at mode 1 were discarded.



Formatted: Indent: First line: 0 ch

Figure 9. Statistics of ΔZ and ΔV for the Ku-band radar. Top: precipitation cases with $Z_e < 10$ dBZ; Bottom: precipitation cases with $Z_e > 20$ dBZ.

Formatted: Font: Bold
Deleted: 8
Deleted: > 20
Deleted: < 10
Deleted:
Formatted: Superscript
Formatted: Subscript

490 The same method was applied to the Ka-band radar (Fig. 10). Note that the data from mode 1 was not used due to the small Nyquist velocity (4.63 m s^{-1} as shown in Tab. 1). Interestingly, 2 times of coherent integration marginally affects ΔZ and ΔV for the Ku-band radar data (Fig. 9b₂), but this impact is rather significant at Ka-band (Fig. 10a₂). Therefore, Ka-band radar observations from both modes 1 and 2 were not used.

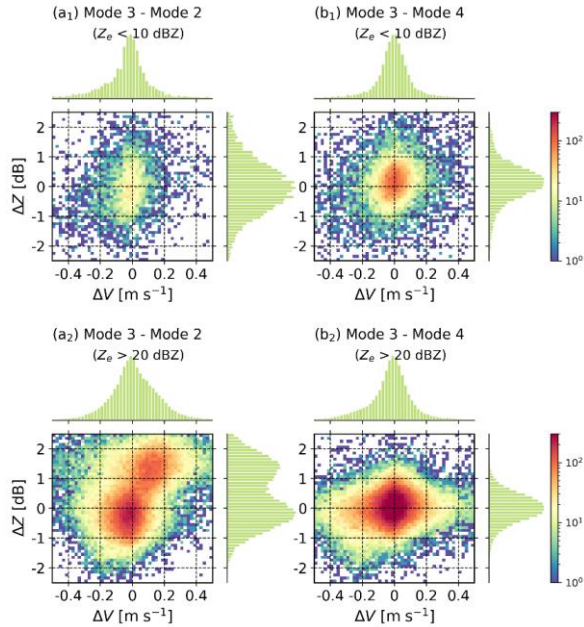


Figure 10. Same as Fig. 9 but for Ka-band radar. Note that the data at mode 1 was excluded due to the limited Nyquist velocity.

Formatted: Centered, Indent: First line: 0 cm

Formatted: Font: 五号, Bold

Formatted: Font: 五号

Formatted: Font: 五号

4.2 Shift-then-average spectra

To maximize the detection advantages of each mode, and to obtain high-quality and easy-to-use radar datasets, Doppler spectra observations from various modes were merged as follows (Giangrande et al., 2001; Luke and Kollias, 2013; Williams et al., 2018):

Deleted: the

Deleted: 2, 3, and 4

Deleted: ,

1) Velocity shift: set the mean of the mean Doppler velocity at each mode as the reference velocity, and then shift the Doppler spectrum at each mode to match the mean Doppler velocities at all modes;

2) Spectral power average: average the spectral powers observed at all modes in each observation round.

For the Ku-band radar, observations at modes 2, 3, and 4 were merged (Fig. 11a), while modes 3 and 4 were used for Ka-band radar (Fig. 11b). The merged Doppler spectrum is significantly less uncertain thanks to the averaging process. It should be noted that the drawback of the mode merging is that the time resolution changes from 7 s to 28 s.

Deleted: We have applied this algorithm to Ku-band radar Doppler spectra observations, and an example is presented in Fig. 109.

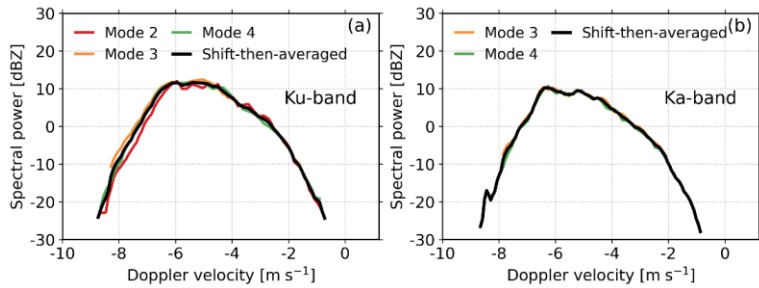
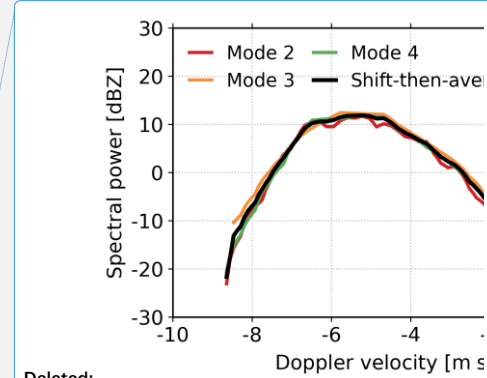


Figure 11. (a) Ku-band Doppler velocity spectra from modes 2, 3, and 4 recorded on 6 June 2020 at 22:52:08 LST at 2.34 km. The merged Doppler spectrum was derived from the Doppler spectra recorded at modes 2, 3, and 4 after shifting and averaging. Note that Ku-band radar observations at mode 1 were not used due to the power loss during coherent integration. (b) The same as in (a) but for Ka-band and observations at modes 3 and 4 were used.

High-order moments of the Doppler spectrum are representative of the key microphysical processes in clouds and precipitation (Luke and Kollias, 2013; Maahn and Löhnert, 2017; Li et al., 2021). The second, third, and fourth moments of the radar Doppler spectrum are spectrum width, skewness, and kurtosis respectively. Figure 12 compares these high-order moments estimated from the Ku-band radar Doppler spectra at modes 2, 3, 4, and the merged data. The sidelobe impacts on spectrum width, skewness, and kurtosis are significant between 5 and 7 km at modes 2 and 4 (Fig. 12a, b, c). In rain, the estimates of high-order moments at modes 2, 3, and 4 agree rather well with each other. In snow, the spectrum width at mode 2 is systematically smaller than those at other modes (Fig. 12a). This may be explained by the finer spectral velocity resolution at mode 2 (Tab. 1). In addition, as the radar echo approaches the noise level, underestimation of kurtosis becomes more significant (mode 3 in Fig. 12c).

The results for the Ka-band radar are shown in Fig. 13. The agreement among different modes is better than that at Ku-band thanks to higher spectral velocity resolution and less uncertainties for the Ka-band radar, while the bias of kurtosis in the snow at mode 3 (Fig. 13c) is more contrasting. These findings indicate that the uncertainties of estimated radar moments as introduced by different observing modes should be taken into account in snow retrievals (Maahn and Löhnert, 2017).



- Deleted:
- Deleted: 0
- Deleted: 9
- Formatted: Font: Bold
- Deleted: is
- Deleted: e
- Deleted: not
- Deleted: 1
- Deleted: 0
- Deleted: 1
- Deleted: 0
- Deleted: 10a
- Deleted: 1
- Deleted: to
- Deleted: 10c
- Deleted: 1
- Deleted:
- Deleted: 11
- Deleted: 2
- Deleted: Although t
- Deleted: 11c
- Deleted: 2

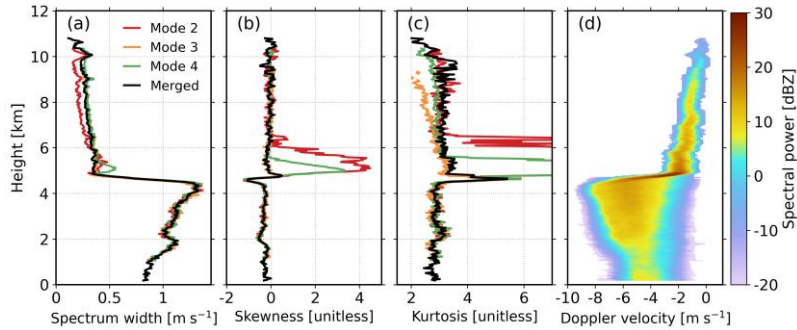


Figure 12. (a) Spectrum width, (b) skewness and (c) kurtosis estimated from Ku-band radar Doppler spectra recorded at mode 2, 3, 4 and the merged data; (d) the profile of merged Doppler velocity spectra. Note that Ku-band radar observations at mode 1 were not used due to the power loss during coherent integration.

Deleted: 1

Deleted: 10

Formatted: Font: Bold

Deleted: e

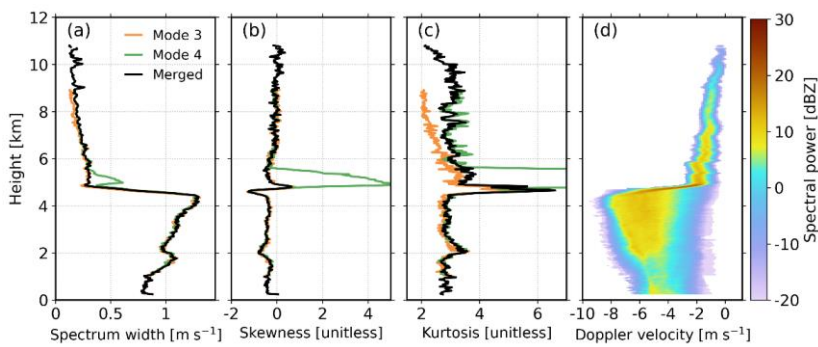


Figure 13. Same as Fig. 12 but for Ka-band radar. Note that Ka-band radar observations at mode 1 were not used due to the limited Nyquist velocity, while mode 2 data was discarded due to the power loss during coherent integration.

Deleted:

Formatted: Font: Bold

Deleted: 2

Deleted: 1

Deleted: 1

Deleted: 0

Deleted: e

Formatted: Font: Not Bold

Formatted: Font: Not Bold

5. Evaluation: a case study

The presented methods were used to construct a new spectra-based radar data processing framework as shown in Fig. 14. In this section, we take a rainfall event to illustrate the algorithms presented in this study. On 6 June 2020, a stratiform rainfall system moved over the Longmen station. The melting layer is about 5 km, and the bright band signatures can be well identified from Ku- and Ka-band radar reflectivity observations as shown in Fig. 15 and 16.

Deleted: 4

Deleted: 5

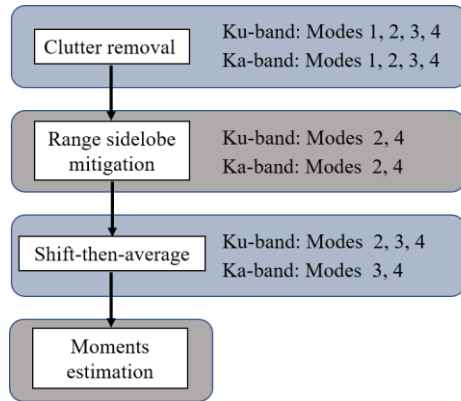


Figure 14. Procedures for generating estimates of spectral moments

5.1 Case study.

To evaluate the performance of the presented framework, the merged radar products were compared with raw data products at mode 3 after processing the Ku- and Ka-band data with the proposed algorithm. The time-height cross-section plots of Ku- and Ka-band radar observations are shown in Fig. 15 and 16, respectively. The cloud top height is about 14 km (Fig. 15a₁), while it is much lower at mode 3 (9 ~ 10 km) which is attributed to the lower sensitivity at this mode. At Ka-band, due to the increased attenuation from rain, melting layer, and the wet radome (Li and Moisseev, 2019), the observed cloud top descends to around 7 km during the most intensive precipitation period (around 22:00 LST, Fig. 16a₂). The bias in spectrum width, skewness and kurtosis introduced by sidelobe effect is rather significant at Mode 4 for both radars (Fig. 15c₃, d₃, e₃ and Fig. 16c₃, d₃, e₃), while it was well mitigated in the merged products (Fig. 15c₁, d₁, e₁ and Fig. 16c₁, d₁, e₁).

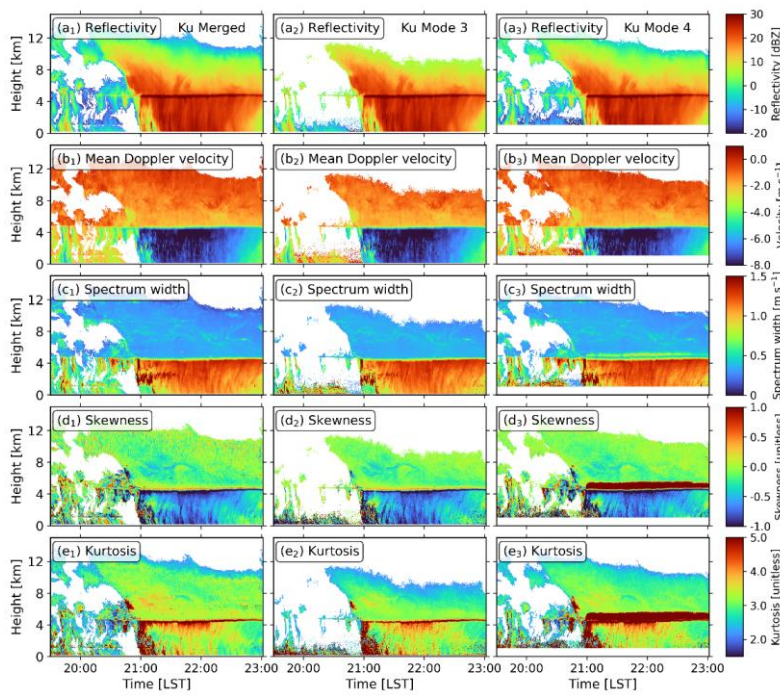
In addition, we have calculated statistics of the power leakage to range sidelobe, and the results for Ku-/Ka-band radars are given in Fig. D1 (Appendix). The results show that the sidelobe signals are usually below -20 dB. Since the reflectivity enhancement in the melting layer usually does not exceed 10 dB (Li et al., 2020), the sidelobe contamination in rain is not significant. However, the fall velocity of snow is much slower than rain drops. Namely, no meteorological signals present in the range of 3 ~ 10 m s⁻¹ and the sidelobe signal becomes evident.

Skewness and kurtosis are indicative of the degree of asymmetry and peakness of the spectrum, respectively. Skewness has been used as an early qualitative predictor of drizzle onset in clouds and locating supercooled liquid water since it is very sensitive to drizzle generation (Luke et al., 2010;

- Formatted: Font: Bold
- Formatted: Font: Not Bold
- Formatted: Centered
- Formatted: Indent: First line: 0 ch
- Deleted: Qualitative evaluation
- Deleted: 5
- Deleted: in at Ku-band at
- Deleted:
- Formatted: Subscript
- Formatted: Subscript
- Formatted: Subscript
- Deleted:
- Deleted:
- Deleted:
- Moved (insertion) [2]
- Deleted: in order to figure out how
- Deleted: much power is leaking into
- Deleted: .
- Formatted: Superscript
- Deleted: the distribution of the difference between the sidelobe and the peak power of and the height of range sidelobe on each velocity bin is given in Fig. 15. For each velocity bin, the difference between peak spectral power (S_{peak}) and the removed sidelobe power (S_{sidelobe}), the corresponding height difference between the peak spectral power (H_{peak}) and removed sidelobe power (H_{sidelobe}) were analyzed. As can be seen in Fig.15, the rang sidelobes of modes 2 and 4 extend to different heights because of their different pulse compression ratios. .

635

Kollias et al., 2011a; Kollias et al., 2011b). The higher-order radar moments have been less frequently used for studying the melting layer. It appears that skewness presents a “decrease-increase-decrease” feature, while kurtosis is characterized by a distinct enhancement. These observations of skewness and kurtosis in the melting layer are interesting, and how these changes are linked to the change of cloud/precipitation microphysics warrants future studies.



640

Figure 15. Time-height cross-section plots of Ku-band Doppler spectra moments from 19:30:19 to 23:01:26. The left column is estimated from the merged Doppler spectra, and the middle and the right columns are from the data recorded at modes 3 and 4, respectively. From top to bottom: (a) reflectivity; (b) mean Doppler velocity; (c) spectrum width; (d) skewness; (e) kurtosis.

Formatted: Font: Bold

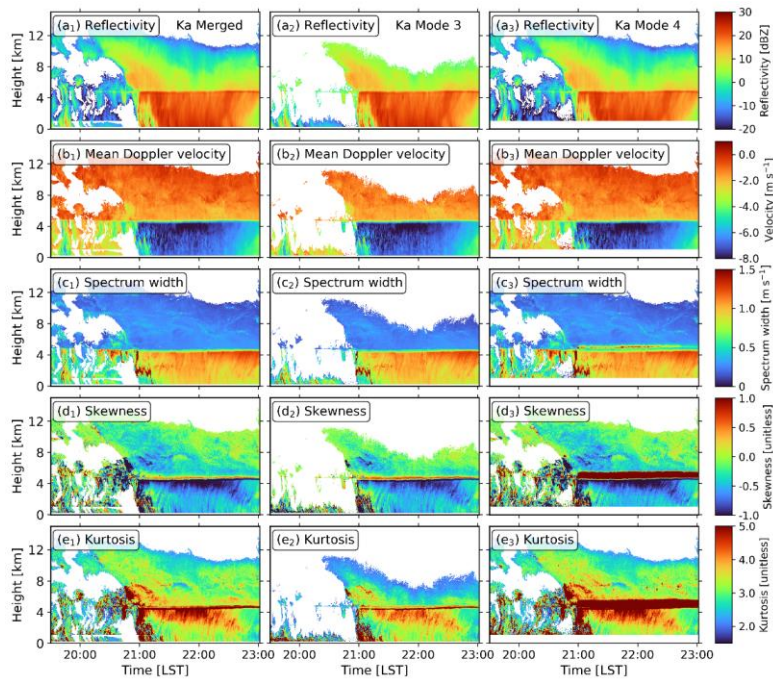


Figure 16. same as Fig. 15 but at Ka-band.

Formatted: Font: Bold

Deleted: in

5.2 Comparison with a C-band radar

Observations from a collocated C-band frequency modulated continuous wave radar (FMCW) radar (Cui et al., 2020) were used for a sanity check for the processed Ka/Ku-band radar data products. The C-band radar's data products include reflectivity, Doppler velocity and spectrum width. The spectrum width observed by the C-band radar was compared with those from mode 4 of Ku- and Ka-band radars. As shown in Fig. 17a₁, b₁, the surge of Ku- and Ka-band spectrum width at around 0.4 m s^{-1} is attributed to the sidelobe effect, while the artifacts were well mitigated after applying the presented algorithm (Fig. 17a₂, b₂). It is interesting to note that the observed spectrum width at Ku/Ka-band does not necessarily follow the 1:1 line, since the Rayleigh scattering may not be satisfied at Ku/Ka-band for heavy precipitating cases.

Deleted: ere

Deleted: e

Deleted:

Formatted: Subscript

Formatted: Subscript

Formatted: Superscript

Deleted:

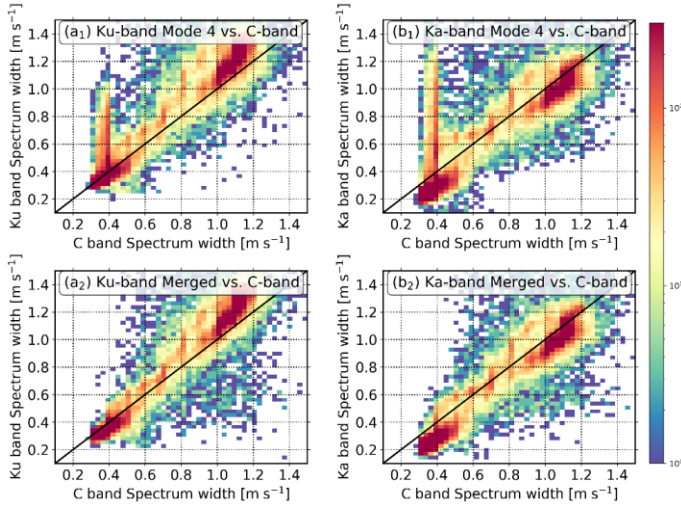


Figure 17. Spectrum width comparison between C-band and (a) Ku-band and (b) Ka-band. The spectrum width observations at mode 4 (upper panels) and merged data (lower panels) were used for comparison. Radar observations from 1 km to 9 km during this event were employed.

5.3 Quantitative evaluation

This event is also used for quantitative evaluations of the presented methods. Spectral moments (reflectivity, Doppler velocity, spectrum width, skewness and kurtosis) before and after the spectral processing are quantitatively compared to show the effectiveness and necessity of the presented methods. The results of clutter and sidelobe mitigation are presented in separate subsections.

5.3.1 Clutter removal

To show how the clutter mitigation procedure improves the radar data quality, we have compared the standard deviation between the data products before/after the clutter removal and the “true data”. Here, the “true data” at Ku-band is defined as

$$X_{Ku,true} = \text{median}(X_{Ku,M2}^{declustered}, X_{Ku,M3}^{declustered}, X_{Ku,M4}^{declustered}) \quad (1)$$

where $X_{Ku,Mi}^{declustered}$ denotes the spectral moment derived from decluttered Doppler spectra at mode i . Similarly, the “true data” at Ka-band:

$$X_{Ka,true} = \text{median}(X_{Ka,M3}^{declustered}, X_{Ka,M4}^{declustered}) \quad (2)$$

We introduce the standard deviation to assess the difference between radar products at a given mode

Formatted: Font: Bold

Deleted:

Deleted: Quantitative evaluation

Formatted: Font: Not Bold

Formatted: Font: Not Bold

Deleted: to

Deleted: mitigation

Moved (insertion) [1]

Deleted: Since the proposed data processing methods for clutter removal and range sidelobe mitigation are Doppler-spectra-based, the effectiveness of the methods needs to be quantitatively evaluated in order to figure out how these processes affect the estimation of radar moments. Since the proposed data processing methods for clutter removal and range sidelobe mitigation are Doppler-spectra-based, the effectiveness of the methods needs to be quantitatively evaluated in order to figure out how these processes affect the estimation of radar moments. Since the higher-order estimated moments are more sensitive to the spectral processing, Fig. 13 show the comparison of higher-order spectral moments estimated from each mode before and after declutter in the range of 1 km to 3 km, that is, the altitude range of frequently detected clutter. The raw moment profiles are given in color and the decluttered profiles are given in black. The original Doppler velocity spectra of Fig. 13 can be found in the Fig. 4a1, b1, c1, and d1. Visual inspection of Fig. 13 shows that the impact of clutter on moments estimation cannot be ignored. To make a quantitative evaluation of the effect of the proposed declutter method, we performed the spectral moments standard deviation (SD) statistics before and after applying the

Moved up [1]: Since the proposed data processing methods for clutter removal and range sidelobe mitigation are

Formatted: Font: Italic

Formatted: Right, Indent: First line: 0 ch

Deleted: pro

Deleted: pro

Deleted: pro

Formatted: Indent: First line: 0 ch

Formatted: Font: Italic

Deleted: 1

665

670

675

745 and the “true data”:

$$SD = \sqrt{\frac{\sum_{n=1}^{n=m} (X_{M;n} - X_{true})^2}{m}} \quad (3)$$

where m denotes the number of rainfall cases between 0 and 3 km. The results for the Ku- and Ka-band radar during this event are given in Tab. 2 and 3, respectively.

750 As we can see from Tab. 2, clutter signals affect the estimation of spectral moments, the SD value of Ku-band reflectivity is reduced by about 1 dBZ after imposing the clutter removal algorithm. Significant improvement can also be identified at mean Doppler velocity and spectrum width observations. Compared with the Ku-band radar, clutter signals are weaker at Ka-band (Tab. 3). The data quality improvement of spectral moments at the Ka-band is not as pronounced as that at Ku-band, which is expected since the Ka-band radar’s beam width (0.35°) is smaller than that of Ku-band (0.9°). The presented results indicate that clutter removal is essential for producing high-quality Ku data products.

755 **Table 2.** Standard deviation (SD) for Ku-band spectral moments before and after the declutter approach compared with the “true data”. Radar observations from 0 to 3 km are used for comparison.

Moments	Mode 2		Mode 3		Mode 4	
	SD	SD	SD	SD	SD	SD
	before	after	before	after	before	after
Reflectivity (dBZ)	0.98	0.62	1.17	0.37	1.21	0.56
Doppler velocity (m s ⁻¹)	0.41	0.32	0.37	0.16	0.42	0.27
Spectrum width (m s ⁻¹)	0.15	0.08	0.19	0.06	0.19	0.07
Skewness (-)	0.39	0.23	0.52	0.18	0.45	0.19
Kurtosis (-)	1.47	1.02	2.30	0.66	1.50	0.60

760 **Table 3.** The same as in Tab. 2 but for Ka-band.

Moments	Mode 3		Mode 4	
	SD	SD	SD	SD
	before	after	before	after
Reflectivity (dBZ)	0.48	0.36	0.69	0.57
Doppler velocity (m s ⁻¹)	0.21	0.19	0.32	0.28
Spectrum width (m s ⁻¹)	0.11	0.06	0.11	0.07
Skewness (-)	0.41	0.22	0.36	0.20
Kurtosis (-)	2.02	0.93	1.33	0.78

5.3.2 Sidelobe mitigation

The effect of sidelobe mitigation was also quantitatively evaluated. Since no pulse compression was

Deleted: 2

Formatted

Deleted: 1

Formatted

Deleted: The mode 1 was excluded because of the effect of ...

Formatted

Deleted: all ...spectral moments, the SD value of ...Ku-band

Moved (insertion) [3]

Deleted: Both the variation of SDs of ...significant

Deleted: that at

Deleted: improvement...results of all spectral

Deleted: the ...clutter removal is essential for producing high

Deleted: In contrast, less clutters were detected by Ka-

Formatted

Moved up [3]: Both the variation of SDs of mean Doppler

Deleted: XXXXXXXXXXXXXXXXXXXX .

Deleted: Performance evaluation of the proposed declutter

Formatted

Formatted Table

Formatted

Formatted

Deleted: V

Formatted

Formatted

Formatted

Formatted

Formatted Table

Deleted: 1.13

Formatted

Deleted: 0.99

Deleted: 0.46

Formatted

Deleted: 0.37

Formatted

Formatted

Deleted: 0.36

Formatted

Deleted: 0.33

Formatted

Deleted: 0.20

Formatted

Deleted: 0.18

Formatted

Deleted: 0.13

Formatted

Deleted: 0.09

Formatted

Formatted

Formatted

Formatted

Formatted

Formatted

employed at mode 3 for the Ka/Ku-band radars, we use radar data products at mode 3 as “true data”. Radar observations from 4.5 to 6 km are used for the assessment, and the results for the Ku-band radar are given in Tab. B1 (Appendix). Since the signals associated with sidelobe are relatively weak (Fig. D1 in Appendix), no significant changes in reflectivity and mean Doppler velocity before and after sidelobe suppression can be identified in both modes 2 and 4. As the order of spectral moments increases, the effect of range sidelobe becomes significant. The SD values of spectrum width are reduced by an order of magnitude after the sidelobe mitigation at both modes 2 and 4. Moreover, the improvement of skewness and kurtosis after the sidelobe mitigation is more obvious. The Ku-band SD of skewness at mode 2 (mode 4) decreased from 2.88 (0.4) to 1.61 (0.26), and that of kurtosis decreased from 31.38 (5.4) to 11.64 (1.32). Similar improvement in skewness and kurtosis can also be found at Ka-band (Tab. B2 in Appendix).

6 Summary

In this study, a framework for processing the Doppler spectra observations of a multi-mode pulse compression Ka/Ku cloud radar system is presented. We first proposed an approach to identify and remove the clutter signals in the Doppler spectrum based on spectral power ratios between different operating modes. Then, we developed a new algorithm to remove the range sidelobe around the melting layer at the modes implementing the pulse compression technique. We further show that coherent integration has a decent impact on reflectivity and Doppler velocity observations and should be used with caution when the spectral merging is made. The radar observations from different modes were then merged using the shift-then-average method. The presented spectral processing framework was applied to radar observations of a stratiform precipitation event, and the quantitative evaluations of the processed data suggest that clutter/sidelobe suppression and spectral merging results demonstrated good performance.

The presented methods mainly deal with the challenges in observing stratiform rainfall events in Southern China, given the weaker signal attenuation at both bands compared with that in convective precipitation. We are aware that cloud radars have proven to be an effective tool for snowfall observations (e.g., Kollias et al., 2007; Li et al., 2021), the applicability of the presented framework in snowfall is yet clear despite that the sidelobe contamination in snowfall is not as

- Deleted: -
- Deleted: Differently, both Ka- and Ku-band use the
- Deleted: of
- Deleted: from 4.5 km to 6 km (that with no range ...)
- Deleted: : Figure 14 shows the comparison of the spectral ...
- Deleted: .
- Deleted: t
- Deleted: quantitative evaluation of
- Deleted: the method is
- Deleted: 4
- Deleted: and 5 in the statistical way
- Deleted: Due
- Deleted: to the weak power of s
- Deleted: there is
- Deleted: difference
- Deleted: For both Ka- and Ku-band, the variation of the SD ...
- Deleted: of the spectral moments' order
- Deleted: is
- Deleted: at
- Deleted:)
- Deleted: are
- Deleted: shown in the statistics of
- Deleted: All these statistics show that the range sidelobe ...
- Formatted: Font: 五号, Bold
- Formatted: Font: Bold
- Formatted: Font: 五号, Bold
- Formatted: Font: 五号
- Formatted: Font: 五号
- Formatted: Font: 五号
- Moved up [2]: In addition, in order to figure out how
- Formatted: Font: Bold
- Deleted: .
- Deleted: The theoretical peak sidelobe ratio (the ratio of the ...)
- Formatted: Font: Not Bold
- Deleted: 6

significant as that in the presence of a melting layer. The multi-year radar observations recorded at the Longmen station will be processed with the present framework for elucidating the dynamics and microphysics of clouds and precipitation in southern China.

Appendix A: Statistics for spectral power ratios of meteorological signals between different modes at Ku-band

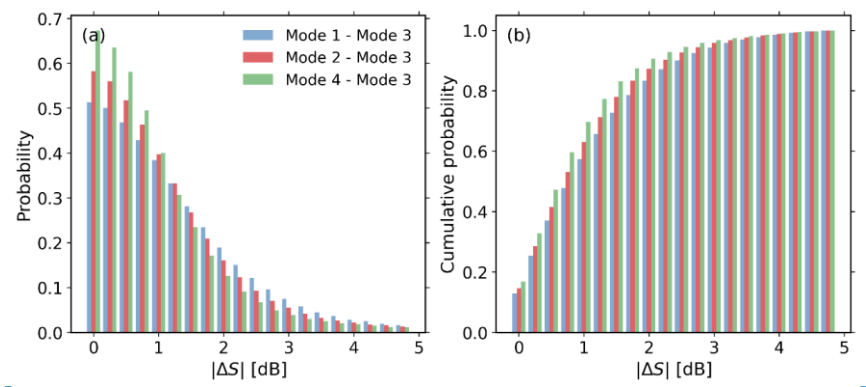


Figure A1. (a) Probability density, and (b) cumulative distribution of spectral power ratio of meteorological signals between different modes at Ku-band.

Appendix B: Determination of PDF_{thresh}

Here, we define $PDF_{thresh} = PDF_{median} + \alpha PDF_{SD}$. By varying α , different values of PDF_{thresh} can be obtained. Since the Doppler spectra observations at mode 3 for both radars are not affected by the sidelobe effect, they are used as the “true data”. Then, the standard deviation between spectral moments with different α and observations at mode 3 was compared. Tables B1 and B2 present the results for Ku- and Ka-band radars respectively. As we can see that the sidelobe clutter has minimized impact on reflectivity and mean Doppler velocity observations. After applying the PDF method, smaller standard deviation values can be found for spectrum width, skewness and kurtosis. In addition, the performance of the PDF method depends on the selection of α . The value of 1 seems to yield the best results. Smaller α (e.g., 0.2) may mislabel sidelobe signals as meteorological echoes, while larger α (e.g., 1.8) may not be able to fully remove sidelobe signals. We have also tried other values such as 0.8 and 1.2 for α , and found rather similar results with the use of 1. This demonstrates

Deleted: In this study, a framework for processing the Doppler spectra observations of a multi-mode pulse compression Ka/Ku cloud radar system is presented. We first...

Deleted: .

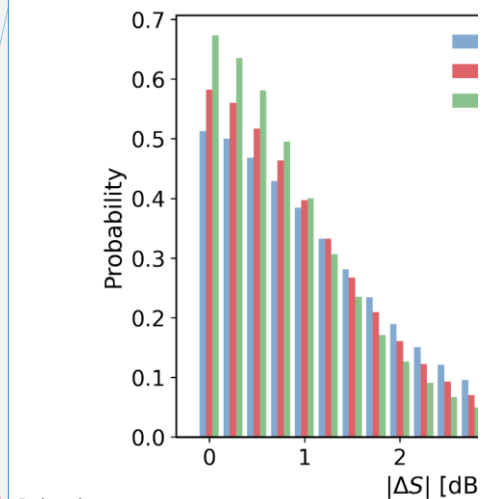
Deleted: .

Formatted: Font: Bold

Deleted: Determine the clutter filter spectral power ratio threshold...

Deleted: In the clutter filtering algorithm, we set the acceptable spectral power ratio $|\Delta S|$ between different...

Moved up [4]: Therefore, cross-calibration between different modes is necessary before comparing observations



Deleted:

Formatted: Font: Bold

Formatted: Centered

Deleted: 1

Formatted: Font: Bold

Deleted: distribution

Deleted: .

Deleted: .

Formatted: Font: Bold

Deleted: yielding

Deleted: 4

Deleted: small

Deleted: 6

that $\alpha = 1$ seems to be robust.

Table B1. Standard deviation (SD) for Ku-band spectral moments before and after the sidelobe removal compared with observations at mode 3. Radar observations from 4.5 to 6 km are used for comparison.

Moments	Mode 2			
	Before	After ($\alpha=0.2$)	After ($\alpha=1$)	After ($\alpha=1.8$)
Reflectivity (dBZ)	1.08	1.08	1.08	1.08
Mean velocity (m s ⁻¹)	0.13	0.14	0.14	0.14
Spectrum width (m s ⁻¹)	0.13	0.06	0.06	0.06
Skewness (-)	2.88	0.47	0.40	0.49
Kurtosis (-)	31.38	6.08	5.40	5.61
Moments	Mode 4			
	Before	After ($\alpha=0.2$)	After ($\alpha=1$)	After ($\alpha=1.8$)
Reflectivity (dBZ)	1.00	1.00	1.00	1.00
Mean velocity (m s ⁻¹)	0.14	0.13	0.13	0.13
Spectrum width (m s ⁻¹)	0.14	0.05	0.05	0.05
Skewness (-)	1.61	0.26	0.26	0.27
Kurtosis (-)	11.64	1.36	1.32	1.33

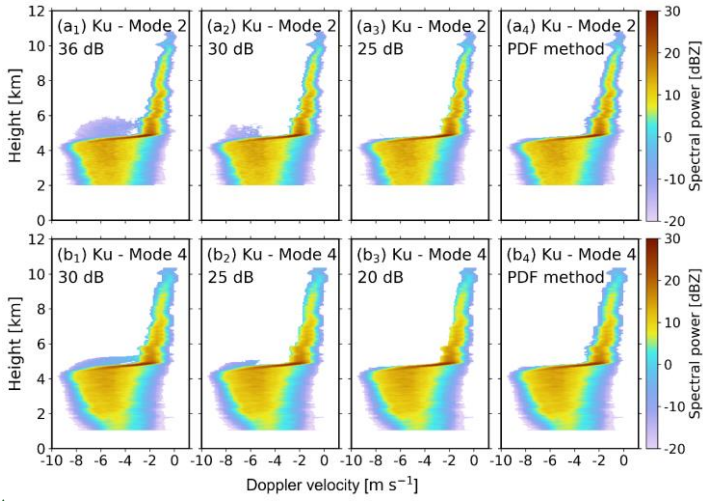
Table B2. Standard deviation (SD) for Ka-band spectral moments before and after the sidelobe removal compared with observations at mode 3. Radar observations from 4.5 to 6 km are used for comparison.

Moments	Mode 2			
	Before	After ($\alpha=0.2$)	After ($\alpha=1$)	After ($\alpha=1.8$)
Reflectivity (dBZ)	0.90	0.90	0.90	0.90
Mean velocity (m s ⁻¹)	0.13	0.13	0.13	0.13
Spectrum width (m s ⁻¹)	0.20	0.07	0.07	0.07
Skewness (-)	3.29	1.00	0.56	0.56
Kurtosis (-)	39.66	13.95	6.57	6.51
Moments	Mode 4			
	Before	After ($\alpha=0.2$)	After ($\alpha=1$)	After ($\alpha=1.8$)
Reflectivity (dBZ)	0.81	0.80	0.80	0.80
Mean velocity (m s ⁻¹)	0.15	0.13	0.13	0.13
Spectrum width (m s ⁻¹)	0.24	0.07	0.06	0.06
Skewness (-)	2.32	0.46	0.46	0.45

- Deleted: 4
- Deleted: 6
- Deleted: 1.08
- Deleted: 1.08
- Deleted: 0.14
- Deleted: 0.14
- Deleted: 0.06
- Deleted: 0.06
- Deleted: unitless
- Deleted: 0.42
- Deleted: 0.46
- Deleted: unitless
- Deleted: 4
- Deleted: 5.59
- Deleted: 5.52
- Deleted: 4
- Deleted: 6
- Deleted: 1.00
- Deleted: 1.00
- Deleted: 0.13
- Deleted: 0.13
- Deleted: 0.05
- Deleted: 0.05
- Deleted: unitless
- Deleted: 0.26
- Deleted: 0.27
- Deleted: unitless
- Deleted: 1.32
- Deleted: 1.33
- Deleted: 4
- Deleted: 6
- Deleted: 0.90
- Deleted: 0.90
- Deleted: 0.13
- Deleted: 0.13
- Deleted: 0.07
- Deleted: 0.07
- Deleted: unitless
- Deleted: 0.67
- Deleted: 0.56

Kurtosis ($\bar{\epsilon}$)	17.31	2.69	2.62	2.62
-------------------------------	-------	------	------	------

Appendix C: Comparison of different range sidelobe mitigation methods



285

Figure C1. Ku-band Doppler power spectra after mitigating range sidelobe at modes 2 and 4 after the sidelobe mitigation using the threshold method (a₁-a₂, b₁-b₂) and PDF method (a₃, b₄) on 6 June 2020 at 22:52:08 LST. The Doppler spectra observations before the sidelobe mitigation can be found in Fig. 4b₁ and d₁.

- Deleted: unitless
- Deleted: 2.64
- Deleted: 2.62
- Deleted: .
- Formatted: Font: Bold
- Deleted: B
- Formatted: Font: Bold
- Moved up [5]: Another alternative sidelobe mitigation method mentioned in the paper is based on the theoretical power of the sidelobe to set the threshold for sidelobe identification. The range sidelobe caused by pulse compression technology appears in both the upper and lower range gates of the target bin, which is weak compared with the echo of the target. The theoretical peak sidelobe ratio (the ratio of the main lobe peak power to the highest sidelobe peak power) is 36 dB and 30 dB for mode 2 and mode 4, respectively. If the echo of the main lobe is detected correctly, then we can calculate the theoretical sidelobe power by knowing the peak sidelobe ratio. But in fact, the precipitation echoes are not isolated targets, a range gate can receive range sidelobes from several other gates at the same time. Therefore, it is difficult to remove all the sidelobes with a fixed threshold, which sometimes requires many rounds of operation. Figure B1 shows the comparison of sidelobe
- Formatted: Font: Bold
- Deleted: B
- Formatted: Font: Bold
- Deleted: removal
- Deleted: using
- Deleted: c
- Deleted: 1
- Deleted: a
- Deleted: 2
- Deleted: c
- Deleted: 2
- Deleted: d₁
- Deleted: d₂
- Deleted:

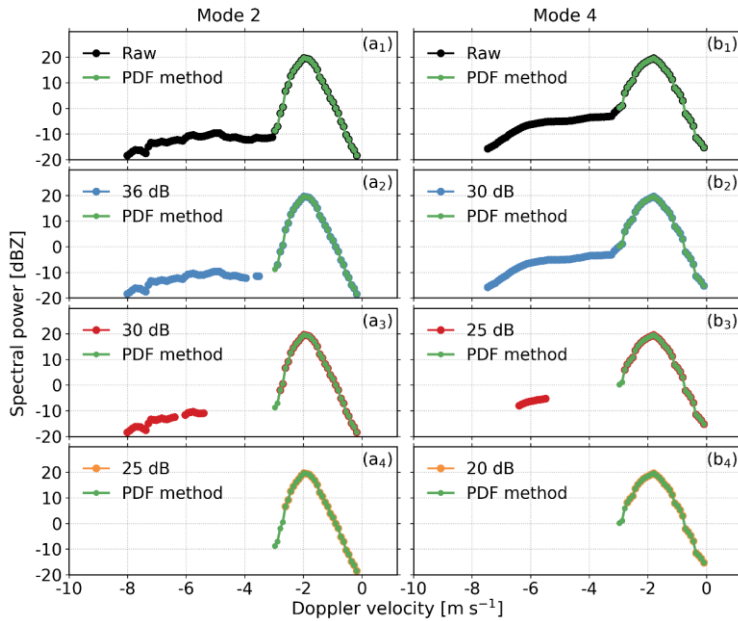


Figure C2. Ku-band Doppler power spectra recorded at (a) modes 2 and (b) 4 at 5.01 km after the sidelobe mitigation using the threshold method and PDF method on 6 June 2020 at 22:52:08 LST.

Appendix D: Statistical distribution of range sidelobe power as a function of height

For each velocity bin, the difference between peak spectral power (S_{peak}) and the removed sidelobe power ($S_{sidelobe}$), and the corresponding height difference between the peak spectral power (H_{peak}) and removed sidelobe power ($H_{sidelobe}$) were analyzed. As can be seen in Fig. C1, the pattern of range sidelobes at modes 2 and 4 are different due to their different pulse compression ratios.

The theoretical peak sidelobe ratio (the ratio of the main lobe peak power to the highest sidelobe peak power) is 36 dB and 30 dB for mode 2 and mode 4, respectively. Therefore, the sidelobe of mode 2 is weaker than that of mode 4. At the height close to H_{peak} , the power difference between $S_{sidelobe}$ and S_{peak} can be much higher than the theoretical value due to the overlap of multiple sidelobes.

- Deleted: B
- Formatted: Font: Bold
- Formatted: Font: Bold
- Deleted: Comparison of
- Deleted: after mitigating range sidelobe
- Deleted: removal
- Deleted:
- Formatted: Font: Bold
- Formatted: Font: Bold
- Formatted: Font: Italic
- Formatted: Font: Italic, Subscript
- Formatted: Font: Italic
- Formatted: Font: Italic, Subscript
- Formatted: Font: Italic
- Formatted: Font: Italic, Subscript
- Deleted: 15
- Formatted: Font: Italic
- Formatted: Font: Italic, Subscript
- Deleted: of
- Deleted: extend to different heights
- Deleted: because of
- Formatted: Justified, Indent: First line: 2 ch
- Formatted: Font: Italic
- Formatted: Font: Italic
- Formatted: Font: Italic
- Formatted: Font: Italic, Subscript
- Deleted: .

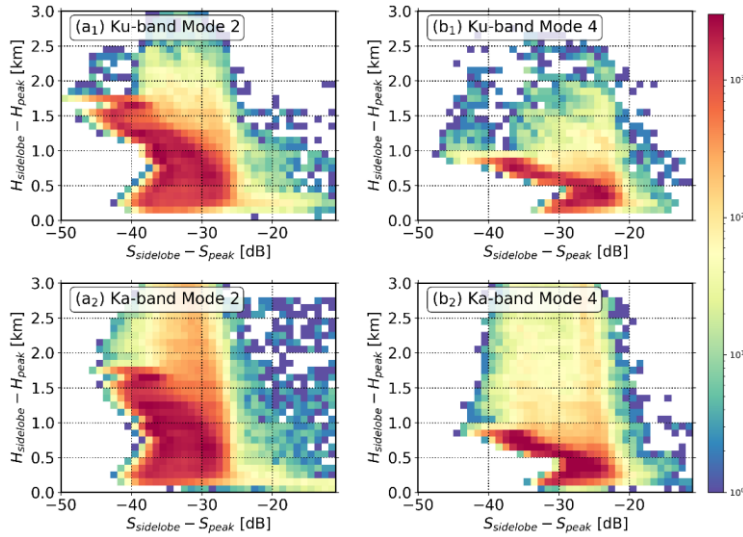


Figure D1. Statistical distribution of range sidelobe power as a function of heights at Ku-band (upper panels) and Ka-band (lower panels).

Formatted: Font: Bold

Formatted: Font: Bold

Formatted: Font: Not Italic

Author contributions. HL and LL conceptualized this study; HD performed the investigation and co-wrote the draft with HL. All authors contributed to reviewing and editing the manuscript.

Deleted: of

Competing interests. The authors declare that they have no conflict of interest.

Deleted: .

Financial support. This research has been supported by the National Natural Science Foundation of China (grant no. 41875036, 42105141, U2142210), the Basic Research Fund of CAMS (451490), and the Postgraduate Research & Practice Innovation Program of Jiangsu Province (KYCX22_1153).

Deleted: .

References

Clothiaux, E. E., Moran, K. P., Martner, B. E., Ackerman, T. P., Mace, G. G., Uttal, T., Mather, J. H., Widener, K. B., Miller, M. A., and Rodriguez, D. J.: The Atmospheric Radiation Measurement Program Cloud Radars: Operational Modes, *J. Atmos. Ocean. Tech.*, 16, 819-827, 10.1175/1520-0426(1999)016<0819:Tarmpc>2.0.Co;2, 1999.

- 1410 Cui, Y., Ruan, Z., Wei, M., Li, F., and Ge, R.: Vertical structure and dynamical properties during snow events in middle latitudes of China from observations by the C-band vertically pointing radar, *J. Meteorol. Soc. Jpn. Ser. II*, 2020.
- Giangrande, S. E., Babb, D. M., and Verlinde, J.: Processing Millimeter Wave Profiler Radar Spectra, *J. Atmos. Ocean. Tech.*, 18, 1577-1583, 10.1175/1520-0426(2001)018<1577:Pmwprs>2.0.Co;2, 2001.
- 1415 Hildebrand, P. H. and Sekhon, R.: Objective determination of the noise level in Doppler spectra, *J. Appl. Meteorol.*, 13, 808-811, 1974.
- Hu, X., Ge, J., Du, J., Li, Q., Huang, J., and Fu, Q.: A robust low-level cloud and clutter discrimination method for ground-based millimeter-wavelength cloud radar, *Atmos. Meas. Tech.*, 14, 1743-1759, 10.5194/amt-14-1743-2021, 2021.
- 1420 Illingworth, A. J., Hogan, R. J., O'Connor, E. J., Bouniol, D., Brooks, M. E., Delanoé, J., Donovan, D. P., Eastment, J. D., Gaussiat, N., Goddard, J. W. F., Haeffelin, M., Baltink, H. K., Krasnov, O. A., Pelon, J., Pirou, J.-M., Protat, A., Russchenberg, H. W. J., Seifert, A., Tompkins, A. M., van Zadelhoff, G.-J., Vinit, F., Willén, U., Wilson, D. R., and Wrench, C. L.: Cloudnet: Continuous Evaluation of Cloud Profiles in Seven Operational Models Using Ground-Based Observations, *B. Am. Meteorol. Soc.*, 88, 883-898, 10.1175/bams-88-6-883, 2007.
- 1425 Kalapureddy, M. C. R., Sukanya, P., Das, S. K., Deshpande, S. M., Pandithurai, G., Pazamany, A. L., Ambuj K, J., Chakravarty, K., Kalekar, P., and Devisetty, H. K.: A simple biota removal algorithm for 35 GHz cloud radar measurements, *Atmos. Meas. Tech.*, 11, 1417-1436, 2018.
- Kalesse, H., Szyrmer, W., Kneifel, S., Kollias, P., and Luke, E.: Fingerprints of a riming event on cloud radar Doppler spectra: observations and modeling, *Atmos. Chem. Phys.*, 16, 2997-3012, 10.5194/acp-16-2997-2016, 2016.
- 1430 Kneifel, S., Kollias, P., Battaglia, A., Leinonen, J., Maahn, M., Kalesse, H., and Tridon, F.: First observations of triple-frequency radar Doppler spectra in snowfall: Interpretation and applications, *Geophys. Res. Lett.*, 43, 2225-2233, 2016.
- 1435 Kollias, P., Albrecht, B. A., and Jr., F. M.: Why Mie?, *B. Am. Meteorol. Soc.*, 83, 1471-1484, 10.1175/bams-83-10-1471, 2002.
- Kollias, P., Rémillard, J., Luke, E., and Szyrmer, W.: Cloud radar Doppler spectra in drizzling stratiform clouds: 1. Forward modeling and remote sensing applications, *J. Geophys. Res.-Atmos.*, 116, 2011a.
- 1440 Kollias, P., Szyrmer, W., Rémillard, J., and Luke, E.: Cloud radar Doppler spectra in drizzling stratiform clouds: 2. Observations and microphysical modeling of drizzle evolution, *J. Geophys. Res.-Atmos.*, 116, <https://doi.org/10.1029/2010JD015238>, 2011b.
- Kollias, P., Clothiaux, E. E., Miller, M. A., Albrecht, B. A., Stephens, G. L., and Ackerman, T. P.: Millimeter-Wavelength Radars: New Frontier in Atmospheric Cloud and Precipitation Research, *B. Am. Meteorol. Soc.*, 88, 1608-1624, 10.1175/bams-88-10-1608, 2007.
- 1445 Li, H. and Moisseev, D.: Melting Layer Attenuation at Ka- and W-Bands as Derived From Multifrequency Radar Doppler Spectra Observations, *J. Geophys. Res.-Atmos.*, 124, 9520-9533, <https://doi.org/10.1029/2019JD030316>, 2019.
- Li, H. and Moisseev, D.: Two Layers of Melting Ice Particles Within a Single Radar Bright Band: Interpretation and Implications, *Geophys. Res. Lett.*, 47, e2020GL087499, <https://doi.org/10.1029/2020GL087499>, 2020.
- 450 [Li, H., Tiira, J., von Lerber, A., & Moisseev, D.: Towards the connection between snow microphysics and melting layer: insights from multifrequency and dual-polarization radar observations during BAECC. Atmos. Chem. Phys., 20\(15\), 9547-9562, 2020.](#)

- 1455 Li, H., Korolev, A., and Moisseev, D.: Supercooled liquid water and secondary ice production in Kelvin–
Helmholtz instability as revealed by radar Doppler spectra observations, *Atmos. Chem. Phys.*, 21,
13593-13608, 10.5194/acp-21-13593-2021, 2021.
- 1460 [Li, H., Möhler, O., Petäjä, T., & Moisseev, D.: Two-year statistics of columnar-ice production in stratiform
clouds over Hyvitiälä, Finland: environmental conditions and the relevance to secondary ice
production. *Atmospheric Chemistry and Physics*, 21\(19\), 14671-14686, 2021.](#)
- Liu, L. and Zheng, J.: Algorithms for Doppler Spectral Density Data Quality Control and Merging for
the Ka-Band Solid-State Transmitter Cloud Radar, *Remote Sens.*, 11, 209, 2019.
- Liu, L., Zheng, J., and Wu, J.: A Ka-band solid-state transmitter cloud radar and data merging algorithm
for its measurements, *Adv. Atmos. Sci.*, 34, 545-558, 10.1007/s00376-016-6044-8, 2017.
- 1465 Luke, E. P. and Kollias, P.: Separating cloud and drizzle radar moments during precipitation onset using
Doppler spectra, *J. Atmos. Ocean. Tech.*, 30, 1656-1671, 2013.
- Luke, E. P., Kollias, P., and Shupe, M. D.: Detection of supercooled liquid in mixed-phase clouds using
radar Doppler spectra, *J. Geophys. Res.-Atmos.*, 115, <https://doi.org/10.1029/2009JD012884>, 2010.
- 1470 Luke, E. P., Kollias, P., Johnson, K. L., and Clothiaux, E. E.: A Technique for the Automatic Detection
of Insect Clutter in Cloud Radar Returns, *J. Atmos. Ocean. Tech.*, 25, 1498-1513,
10.1175/2007jtecha953.1, 2008.
- Maahn, M. and Löhnert, U.: Potential of Higher-Order Moments and Slopes of the Radar Doppler
Spectrum for Retrieving Microphysical and Kinematic Properties of Arctic Ice Clouds, *J. Appl.
Meteorol. Clim.*, 56, 263-282, 10.1175/jamc-d-16-0020.1, 2017.
- 1475 Martner, B. E. and Moran, K. P.: Using cloud radar polarization measurements to evaluate stratus cloud
and insect echoes, *J. Geophys. Res.-Atmos.*, 106, 4891-4897,
<https://doi.org/10.1029/2000JD900623>, 2001.
- Moisseev, D. N. and Chandrasekar, V.: Polarimetric Spectral Filter for Adaptive Clutter and Noise
Suppression, *J. Atmos. Ocean. Tech.*, 26, 215-228, 10.1175/2008jtecha1119.1, 2009.
- 1480 Moran, K., Martner, B., Clark, K., and Chanders, C.: Forthcoming Upgrades to the ARM MMCRs:
Improved Radar Processor and Dual-Polarization, 2002.
- Moran, K. P., Martner, B. E., Post, M. J., Kropfli, R. A., Welsh, D. C., and Widener, K. B.: An Unattended
Cloud-Profiling Radar for Use in Climate Research, *B. Am. Meteorol. Soc.*, 79, 443-456,
10.1175/1520-0477(1998)079<0443:Aucprf>2.0.Co;2, 1998.
- 1485 Sato, T. and Woodman, R. F.: Spectral parameter estimation of CAT radar echoes in the presence of fading
clutter, *Radio. Sci.*, 17, 817-826, <https://doi.org/10.1029/RS017i004p00817>, 1982.
- Shupe, M. D., Kollias, P., Persson, P. O. G., and McFarquhar, G. M.: Vertical Motions in Arctic Mixed-
Phase Stratiform Clouds, *J. Atmos. Sci.*, 65, 1304-1322, 10.1175/2007jas2479.1, 2008.
- [Shupe, M. D., Kollias, P., Matrosov, S. Y., & Schneider, T. L.: Deriving mixed-phase cloud properties
from Doppler radar spectra. *Journal of Atmospheric and Oceanic Technology*, 21\(4\), 660-670., 2004.](#)
- 1490 Stephens, G. L., Vane, D. G., Boain, R. J., Mace, G. G., Sassen, K., Wang, Z., Illingworth, A. J., O'connor,
E. J., Rossow, W. B., Durden, S. L., Miller, S. D., Austin, R. T., Benedetti, A., and Mitrescu, C.:
THE CLOUDSAT MISSION AND THE A-TRAIN: A New Dimension of Space-Based
Observations of Clouds and Precipitation, *B. Am. Meteorol. Soc.*, 83, 1771-1790, 10.1175/bams-
83-12-1771, 2002.
- 1495 Tridon, F., Battaglia, A., and Kollias, P.: Disentangling Mie and attenuation effects in rain using a Ka-W
dual-wavelength Doppler spectral ratio technique, *Geophys. Res. Lett.*, 40, 5548-5552,
<https://doi.org/10.1002/2013GL057454>, 2013.

- 1500 Verlinde, J., Rambukkange, M. P., Clothiaux, E. E., McFarquhar, G. M., and Eloranta, E. W.: Arctic
multilayered, mixed-phase cloud processes revealed in millimeter-wave cloud radar Doppler spectra,
J. Geophys. Res.-Atmos., 118, 13,199-113,213, <https://doi.org/10.1002/2013JD020183>, 2013.
- Williams, C. R., Maahn, M., Hardin, J. C., and de Boer, G.: Clutter mitigation, multiple peaks, and high-
order spectral moments in 35 GHz vertically pointing radar velocity spectra, Atmos. Meas. Tech.,
11, 4963-4980, 10.5194/amt-11-4963-2018, 2018.
- 1505 Williams, C. R., Johnson, K. L., Giangrande, S. E., Hardin, J. C., Öktem, R., and Romps, D. M.:
Identifying insects, clouds, and precipitation using vertically pointing polarimetric radar Doppler
velocity spectra, Atmos. Meas. Tech., 14, 4425-4444, 10.5194/amt-14-4425-2021, 2021.
- Zhu, Z., Kollias, P., Yang, F., and Luke, E.: On the Estimation of In-Cloud Vertical Air Motion Using
Radar Doppler Spectra, Geophys. Res. Lett., 48, e2020GL090682,
1510 <https://doi.org/10.1029/2020GL090682>, 2021.