

Detection of Turbulence from Temperature, Pressure and Position Measurements Under Superpressure Balloons.

Richard Wilson ¹, Clara Pitois ¹, Aurélien Podglajen ², Albert Hertzog ², Milena Corcos ², and Riwal Plougonven ²

¹LATMOS-IPSL, Sorbonne-Université, Paris, France

²LMD-IPSL, Ecole polytechnique, Palaiseau, France

Correspondence: Wilson (richard.wilson@latmos.ipsl.fr)

Abstract. This article deals with the detection of small-scale turbulence from in-situ meteorological measurements performed under superpressure balloons (SPBs). These balloons allow long duration flights (several months) at a prerequisite height level. The dataset is gathered from the Strateole-2 probationary campaign during which eight SPBs flew in the tropical tropopause layer at around 19 and 20.5 km altitudes, from November 2019 to March 2020.

5 Turbulence is not directly measured by the instrument set onboard the SPBs. Nonetheless, there is a potential to derive information about the occurrence of turbulence from the well-resolved in time measurements of pressure, temperature and position. It constitutes a challenge to extract that information from a measurement set that was not designed for quantifying turbulence, and the manuscript explains the methodology developed to overcome this difficulty.

10 It is observed that SPBs oscillate quasi-periodically around their equilibrium positions. The oscillation periods, 220 s in the average, range from 130 to 500 s, close to, but noticeably smaller than, the [Brunt-Väisälä](#) period (~ 300 s). The amplitude of these vertical motions is $\sim \pm 15$ m, inducing large fluctuations in all quantities, whether measured (pressure, temperature, positions) or inferred (density, potential temperature). The relationships between the changes in these quantities and vertical displacements of the balloons are used to infer properties of the flow in which the SPBs drift.

15 In case of active turbulence, the vertical stratification as well as the wind shear are likely to be reduced by mixing. Hence, the increments of potential temperature, $\delta\theta$, and of the vertical displacements of the balloon, δz_B , are expected to be uncorrelated since $\partial\theta/\partial z \rightarrow 0$. Also, the local Richardson number is expected to be less than ~ 0.25 . Several binary indexes (true ~~of~~ or false) to describe the state of the flow, laminar or turbulent, are evaluated. They are based either on correlations between $\delta\theta$ and δz_B , or on estimations of the local Richardson number.

20 Correlation coefficients are computed and compared, by using different measures of $\delta\theta$ and δz_B and by estimating either the Pearson or the Spearman coefficients. Turbulence indexes based on a null-correlation are built using a randomisation test to check whether these correlations are significantly non-positive. It is also shown ~~than~~ that a linear regression between the increments of a quantity and the increments of vertical displacements allows to estimate the vertical gradient of this quantity. Least square fit and Theil-Sen fit are used to estimate time series of vertical gradients $\partial T/\partial z$, $\partial u/\partial z$, $\partial v/\partial z$. Related quantities such as the [Brunt-Väisälä](#) frequency, or the local Richardson number, Ri , are inferred, allowing to establish turbulence 25 indexes from Ri . These different indexes, based on independent measurements and on various methods, correlations or linear

regressions, are found to be consistent: they differ for less than 3% of the cases. The flow is observed to be turbulent for about 5% of the time, with strong inhomogeneities along the longitude.

1 Introduction

1 Introduction

30 The vertical transport of heat, momentum, and minor constituents in the tropical Upper Troposphere-Lower Stratosphere (UTLS) is an important issue since this region is recognized as the gateway of tropospheric air into the stratosphere (Fueglistaler et al., 2009). Above 15 km altitude, this vertical transport is believed to mainly result either from the mean tropical upwelling associated with the Brewer–Dobson circulation or from the small scale turbulence. The relative contribution of turbulent mixing to this vertical transport is highly uncertain, partly owing to lack of observations. Turbulence observations in the tropical
35 UTLS are indeed sparse: they mostly come from two large VHF ~~radar~~radars, from relatively few radiosondes, or from research aircraft.

From measurements of the Equatorial Atmospheric Radar (EAR) located in West Sumatra, Indonesia (0.20°S, 100.32°E), Fujiwara et al. (2003) observed intermittent turbulence near the tropical tropopause with significant enhancements, a factor of 5 in the turbulent kinetic energy (TKE), lasting several days. Such enhancements in the TKE are believed to result from the
40 breaking of large scale Kelvin waves. By using the same EAR data set, Yamamoto et al. (2003) showed that eastward vertical wind shear around the equatorial tropopause frequently generates turbulence through Kelvin-Helmholtz (KH) instabilities. Mega et al. (2010) presented detailed structures of KH instabilities in the equatorial UTLS from both high-resolution EAR measurements (by using an interferometric imaging method), and radiosondes. From the VHF radar of Gadanki, India (13.5°N, 79.2°E) Satheesan and Murthy (2002) and Satheesan and Krishna Murthy (2004) described turbulence characteristics in the
45 tropical UTLS. These authors estimated turbulent kinetic energy (TKE) and TKE dissipation rates from several methods. Interestingly, they did not observed a clear variability with altitude of the turbulence intensity within the UTLS.

Sunilkumar et al. (2015) and Muhsin et al. (2016) presented characteristics of turbulence in the tropical UTLS from GPS-radiosondes observations obtained during more than three years at two stations located in the Indian Peninsula, Trivandrum (8.5°N, 76.9°E) and Gadanki (13.5°N, 79.2°E). The turbulent layers are detected by the Thorpe’s analysis (Thorpe, 1977)
50 following the procedure proposed by Wilson et al. (2010, 2011, 2013). The statistics of various turbulence parameters are described, as well as Brunt-Väisälä frequencies and vertical shears, this for the convective troposphere and for the UTLS. The parameters describing the turbulence are either directly measured, such as the Thorpe lengths (an outer scale of turbulence) and the frequency of appearance of unstable layers, or are inferred on the basis of physical assumptions, like the TKE dissipation rates and the eddy diffusivity. Muhsin et al. (2020) extended the two previous studies by analyzing the soundings of six stations
55 of South-India, adding stations of Cochin (10°N, 76.3°E), Coimbatore (10.9°N, 76.9°E), Goa (15.5°N, 73.8°E) and Hyderabad (17.5°N, 78.6°E) to the two previously mentioned. These data were acquired during four years, from August 2013 to December 2017. All these studies based on radiosondes measurements consistently show that the probability of occurrence of instability, either estimated from the gradient Richardson number Ri or from the squared Brunt-Väisälä frequency N^2 , is decreasing with

altitude above 15 km altitude, i.e. in the UTLS. They found that the ~~probaility of oecurrence~~ probability of occurrence for Ri to
60 be less than 0.25 is between 0 and 5% in the height range 18–25 km, and that the probability of occurrence of unstable region
($N^2 < 0$) is quasi null. Interestingly, Muhsin et al. (2016) did not observe a clear diurnal cycle in the tropical UTLS.

Many studies of turbulence in the free atmosphere are based on measurements from research aircraft (see Dörnbrack et al., 2022, and refe
but, to our knowledge, only one study involves the tropical UTLS. Podglajen et al. (2017) used high-resolution (20 Hz) air-
borne measurements to study the occurrence and properties of small-scale ($< \sim 100$ m) wind and temperature fluctuations in
65 the tropical UTLS over the Pacific ocean. They show that wind fluctuations are very intermittent and appear to be localized in
shallow layers, with ~ 100 m thickness typically. Furthermore, active turbulent events ~~appears~~ appear to be more frequent at
relatively low altitude and near deep convection. They observe that the motions are close to 3D isotropic and that the power
spectra follow a $\sim -5/3$ power-law scaling. The diffusivity induced by turbulent bursts is estimated to be in the order of
 $10^{-1} \text{ m}^2 \cdot \text{s}^{-1}$ and decreases from the bottom to the top of the tropical UTLS.

70 Apart from convective regions, many observations of the free atmosphere show successions of strata, i.e. alternating layers in
which the flow is turbulent, whose depth varies from a few tens to a few hundreds of meters, separated by stable static regions,
i.e. regions where the flow is laminar (e.g., Luce et al., 2015; Podglajen et al., 2017; Wilson et al., 2018). The numerical
simulations of Fritts et al. (2003) support such observations. Turbulent and laminar strata are expected to exist in the tropical
UTLS. Since turbulence, by nature, is a dissipative process, the turbulent layers have a finite lifetime, depending on the process
75 yielding energy at meso scale, shear instability or wave breaking. Thus, by observing the flow at a given altitude level, we
expect to find an alternation of turbulent and laminar episodes.

The Strateole-2 project was set up in recent years in order to better understand the dynamics, transport, microphysics and
dehydration of the tropical UTLS (Haase et al., 2018). It is an international project involving several research groups mostly in
France and USA, led by Laboratoire Meteorologie dynamique (LMD) and Centre National d'Etude Spatiale (the French Space
80 agency). The uniqueness and strength of the Strateole-2 project come from the fact that the atmospheric measurements are
obtained under super pressure balloons (SPB) which can fly for several months (typically three months) at an approximately
constant density level. Standard measurements performed under all the Strateole-2 SPBs, including temperature, pressure and
GPS positions, allow to describe meso- and small-scale dynamic processes at the flight level, in a quasi-Lagrangian way
(Hertzog and Vial, 2001; Hertzog et al., 2012; Podglajen et al., 2016; Corcos et al., 2021). The SPBs usually carry a second
85 gondola with several configurations of instruments, allowing measurements of constituents, aerosols, cloud heights, radiation,
etc.

The main purpose of this paper is to present methods allowing to determine the dynamical state of the flow, laminar or tur-
bulent, in which the SPBs are flowing in. It is based on the estimation of the local stratification of the flow using measurements
of temperature, pressure and GPS positions.

90 The paper is organized as follow: the used data set is presented in the second section, the methods for detecting turbulence
and for estimating various indicators of the flow stability are described in the third section, some results are presented and
discussed in the forth section, a concluding section summarizes the main findings of the paper.

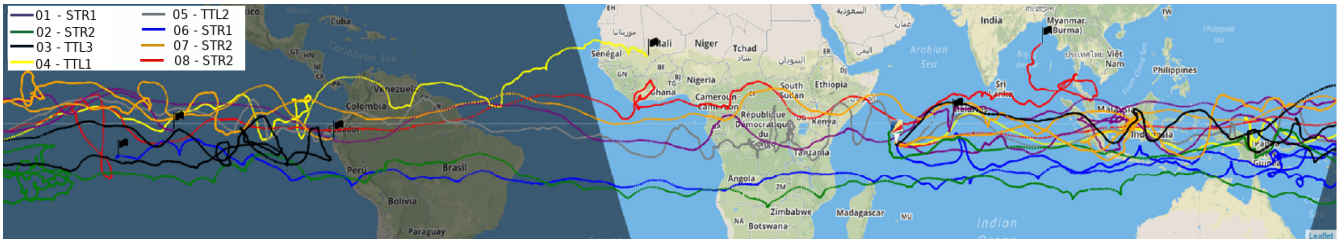


Figure 1. SPB trajectories Trajectories of the eight SPBs

2 The data set

2.1 The Strateole-2 C0 campaign

95 The probatory Strateole-2 campaign, called Strateole-2 C0, was held from November 2019 to March 2020. During this campaign, eight SPBs were launched from Mahé, Seychelles ($4^{\circ}37'S$, $55^{\circ}27'E$), and flew eastward following the Quasi-Biennial Oscillation (QBO) phase that prevailed in the lower stratosphere at this time (Figure 1). The main characteristics of the flights are provided in Table 1. Four of these flights carried only the TSEN (Thermodynamics SENSors) instrument and its associated GPS receiver, the other four carried additional scientific instruments. At first order, SPBs fly on a quasi-constant density level
 100 (Vincent and Hertzog, 2014). TTL and STR flights were associated with different carried masses and/or balloon sizes, and respectively drift at altitudes of ~ 19 km and ~ 20.5 km.

Flight Id	Height (m)	Launch date (UT)	Duration (days)
01_STR1	20652	2019-11-12	107
02_STR2	20502	2019-11-11	103
03_TTL3	19110	2019-11-18	101
04_TTL1	18780	2019-11-27	66
05_TTL2	18800	2019-12-05	79
06_STR1	20380	2019-12-06	57
07_STR2	20125	2019-12-06	83
08_STR2	20100	2019-12-07	77

Table 1. Main characteristics of Strateole-2 C0 flights. All superpressure balloons are equipped with TSEN sensors.

2.2 The TSEN measurements

In this study, we use the TSEN measurements that are performed at the balloon flight level for each flight. They respectively consist in-of two temperature measurements, one with a thermistor sensor (T_S), the other with a thermocouple sensor (T_C),
 105 and a pressure measurement (P). They are closely associated with GPS observations that provide the position (lon, lat, altitude

asl) of the balloon, as well as the ~~the~~ solar zenith angle (SZA). All these measurements are acquired every 30 s, except for the ~~the~~ pressure measurements that are acquired every 1 s.

110 These raw measurements enable us to compute two estimates of the balloon potential temperature (θ_S and θ_C) and density (ρ_S and ρ_C), respectively obtained with the thermistor and thermocouple temperatures. The horizontal velocity components (u and v) are evaluated from successive GPS positions.

In the rest of the study, we will make use of the increments of measured quantities, namely the differences between consecutive measurements: δT_S will for instance ~~stands stand~~ for the increments of the thermistor temperatures. Note that two independent estimates of the balloon vertical displacements are available: δz_{GPS} obtained with the raw GPS altitudes, and δz_P computed with the pressure measurements and further assuming hydrostaticity.

115 TSEN measurements were also performed on the profiling unit of the Reel-down Aerosol Cloud Humidity and Temperature Sensors (RACHuTS) instrument (Kalnajs et al., 2021). RACHuTS notably allows to obtain ~~2-km-long-temperature-profiles~~ vertical temperature profiles of 2 km length below the balloon by reeling down (and then up) the profiling unit at a vertical velocity of about 1 m/s. Only one TSEN temperature sensor (a thermistor) is implemented in the profiling unit. Measurements are performed with a nominal sampling rate of 1 Hz, i.e. the vertical resolution of the RACHuTS temperature profiles is ~ 1 m, 120 which we degraded to about 30 m in order (1) to improve upon the 1-m raw ~~resolution-precision~~ of altitude measurements and (2) to reach similar vertical resolution from TSEN and RACHuTS measurements (since the amplitude of the balloon oscillations is typically ± 15 m).

2.2.1 Instrumental noise

The instrumental noise of the TSEN measurements is an important characteristic that has to be taken into account to assess ~~that~~ 125 whether the flow is turbulent. It is assumed that this noise is a zero-mean, uncorrelated process, i.e. a white noise, contributing to the measured signal. A way to estimate the white noise level is to compute the variance of the n -th order increments of the time series ($n \gtrsim 6$), such a high order differentiation performing a high-pass filtering of the time series. As shown in the Appendix, the variance of the n -th order increments tends to the variance of the uncorrelated signal weighted by the sum of squared binomial coefficients of order $n - 1$. Noise levels are here estimated on time segments of 21 samples (10 min), 130 that is on more than 10,000 segments for a flight lasting ~ 100 days. This method works well if the signal spectra ~~exhibits~~ exhibit a quasi-constant floor, i.e. if a white noise clearly contributes to the measured signal for frequencies smaller than the Nyquist frequency, as is frequently the case for lidar or radar signals. However, we do not observe any white noise level for the TSEN measurements acquired with a sampling period of 30 s (T_S, z, u) (see for instance the power spectra of the vertical displacements δz shown in Fig 6). Therefore, the variance of the n -th order increments cannot be interpreted as solely 135 due to uncorrelated noise, even if some noise is expected to contribute to this high-frequency variance. However, a rough estimate of the noise level has been evaluated from the data segments showing the smallest variances, i.e. segments for which a comparatively smaller contribution of the atmospheric signal is expected. Tables (2) and (3) display estimates of the noise levels for quantities measured or inferred, obtained with the average of the 10% smallest variances of the 6-th order increments.

	T_S (mK)	T_C (mK)	P (Pa)	θ_S (mK)	θ_C (mK)
01_STR1	7	7	0.1	17	17
	5 – 27	5 – 22	0.08 – 0.12	12 – 64	13 – 75
02_STR2	2	2	0.05	5	5
	1 – 6	2 – 6	0.04 – 0.06	3 – 15	4 – 15
03_TTL3	14	10	0.12	31	21
	8 – 36	7 – 23	0.11 – 0.15	19 – 78	15 – 52
04_TTL1	9	8	0.17	19	16
	6 – 31	6 – 23	0.15 – 0.18	13 – 67	12 – 50
05_TTL2	3	3	0.06	6	6
	2 – 7	2 – 9	0.05 – 0.07	4 – 16	4 – 20
06_STR1	6	6	0.08	13	15
	4 – 26	5 – 25	0.07 – 0.09	9 – 62	11 – 60
07_STR2	5	7	0.09	12	16
	4 – 18	5 – 23	0.08 – 0.12	9 – 42	12 – 54
08_STR2	3	3	0.06	7	7
	2 – 8	2 – 8	0.05 – 0.07	5 – 20	6 – 20

Table 2. Estimated noise (standard deviation) of temperature, pressure and dry potential temperature. For each flight, the first row indicates the flight-mean values (bold). The second row respectively indicates the nighttime and daytime average values.

Such estimates, although not fully satisfying, provide however valuable information on the relative quality of the data, allowing
140 to compare noise levels between sensors, between flights or between night and day measurements.

The noise levels of the two temperature sensors, thermocouple and thermistor, are quasi identical. We note that the noise
level of temperature measurements is a factor of three to five larger during daytime than during nighttime for all flights. Such
an increase in temperature noise during day very likely results from the random passage of the sensors in the wake of their
electrical wires or mechanical support. These devices, which are significantly thicker than the sensors themselves, are heated
145 by the solar radiation during day, and are consequently warmer than the air or even the sensor temperature. We also observe that
flight 03_TTL3 temperature measurements are the noisiest (14 mK vs 2–9 mK). Unlike on other flights, where temperature
sensors are hanging at the very bottom of the flight train as far away as possible from large elements (e.g. the gondolas), they
were located within the flight train on flight 03_TTL3. They were thus more prone to being affected by the warm wake of other
devices in the flight train during day.

150 The noise estimates on the pressure measurements, as well as on the vertical positions (both from pressure differences or
GPS) are slightly larger during daytime than during nighttime. The reason for this slight increase in the noise level is probably
not the consequence of an increase in instrumental noise. It may rather be the consequence of the greater amplitudes of the
balloon oscillations during day, which would impact the energy density of P and z at high frequency. The noise levels of the

	z_P (m)	z_{GPS} (m)	u (cm/s)	v (cm/s)
01_STR1	0.11 0.10 – 0.14	0.32 0.29 – 0.36	0.2 0.2 – 0.3	0.2 0.2 – 0.3
02_STR2	0.05 0.04 – 0.07	0.10 0.1 – 0.120	0.1 0.1 – 0.1	0.1 0.1 – 0.1
03_TTL3	0.11 0.10 – 0.13	0.26 0.24 – 0.27	0.2 0.2 – 0.3	0.2 0.2 – 0.3
04_TTL1	0.14 0.13 – 0.15	0.32 0.30 – 0.33	0.3 0.2 – 0.3	0.2 0.2 – 0.3
05_TTL2	0.05 0.05 – 0.06	0.12 0.12 – 0.13	0.1 0.1 – 0.2	0.1 0.1 – 0.1
06_STR1	0.09 0.08 – 0.10	0.28 0.27 – 0.30	0.6 0.5 – 0.7	0.2 0.2 – 0.2
07_STR2	0.10 0.09 – 0.13	0.27 0.26 – 0.29	0.2 0.2 – 0.2	0.2 0.2 – 0.2
08_STR2	0.07 0.06 – 0.08	0.27 0.23 – 0.31	0.1 0.1 – 0.1	0.1 0.1 – 0.1

Table 3. Same as Table 2, but for altitudes derived from the pressure and altitude observations, as well as zonal and meridional velocities.

horizontal wind components estimated from GPS positions is very small, less than 1 cm/s. They do not show any [night/day](#) difference.

2.3 Oscillating movements of the balloons around their equilibrium positions

Superpressure balloons drift with the winds, following a quasi-Lagrangian behavior useful to document the detailed evolution of a given air mass. Their displacements however differ from those of an air parcel in at least two ways: first and most importantly, the balloons follow isopycnic trajectories. The balloon envelope is almost inextensible, [the balloon diameter varying by less than 1%](#), hence the volume is fixed as long as a superpressure is present. As the total mass of the flight train is fixed, the density of the balloon remains constant, implying an isopycnic trajectory. In contrast, air parcels follow isentropic trajectories in the absence of diabatic forcing. A second difference comes from the existence of natural oscillations of the balloon around its equilibrium density surface (EDS), where it achieves neutral buoyancy. These oscillations are of minor importance for the study of phenomena on timescales larger than a few tens of minutes (Vincent and Hertzog, 2014). They will yet be central to the current study, because an oscillating balloon is sampling short vertical profiles of key meteorological variables. The methodology developed in the present study precisely aims at exploiting these short, 'unintended', vertical profiles to diagnose the occurrence of turbulence.

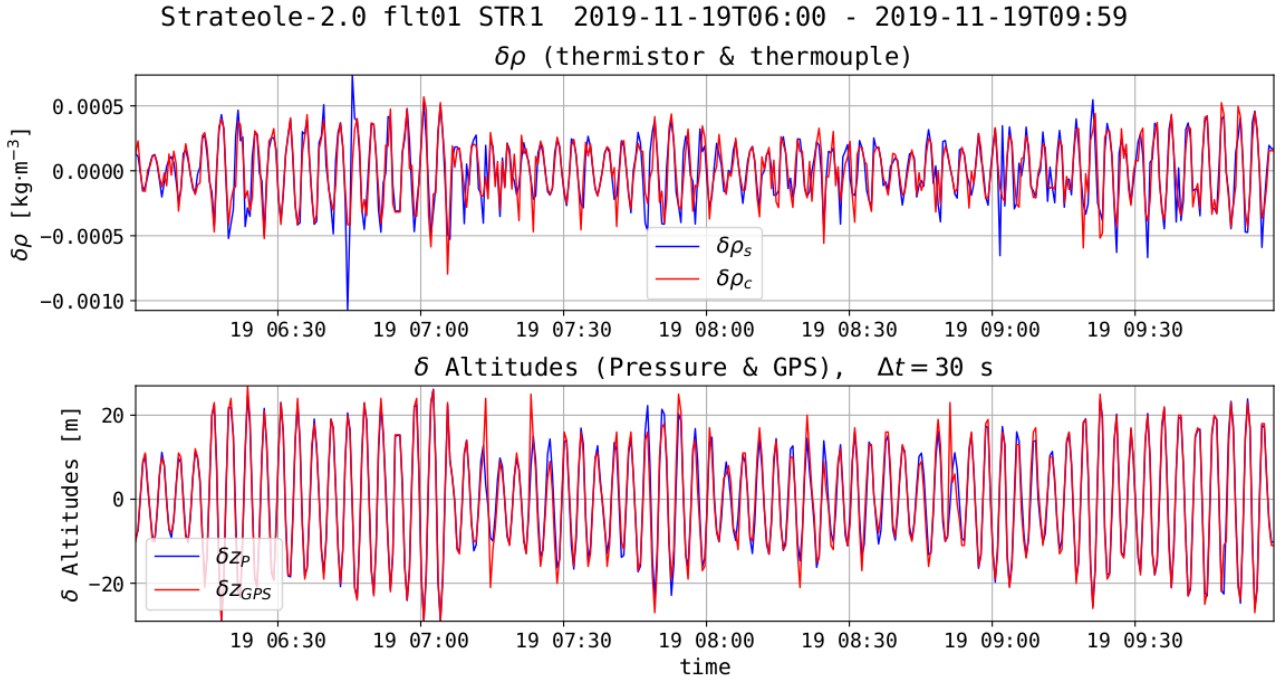


Figure 2. Top: density fluctuations observed on November 19th, from 06:00 to 10:00. Bottom: fluctuations in the height of the balloon for the same time interval.

The atmospheric density (ρ) at the flight level is estimated from the measurements of temperature (T) and pressure (P) by using the perfect gas law, $\rho = P/R_a T$ where R_a is the ideal gas constant for dry air per unit mass. Since two independent measurements of T exist, two estimates of ρ can be calculated, denoted ρ_S and ρ_C , by using respectively the thermistor or the thermocouple temperatures. Figure 2 displays the systematic balloon fluctuations in density about their EDS (top panel), as well as the related variations in balloon altitudes (bottom panel) during four hours of flight 01_STR1. The fluctuations in density are about $\pm 5 \times 10^{-4} \text{ kg}\cdot\text{m}^{-3}$, corresponding to relative fluctuations $\sim \pm 0.5\%$. The corresponding amplitude of the balloon vertical displacements is in this case ± 20 m. SPBs thus move around their EDS, exploring the atmosphere above and below over a few tens of meter. These oscillatory motions induce fluctuations in the measured (P , T , z_{GPS}) and inferred quantities (ρ , θ , z_P). We shall use these variations to describe some properties of the flow by making the hypothesis that the observed variability of a quantity depends on both the balloon vertical displacement and the local vertical gradient of this quantities.

2.3.1 Periods and amplitudes of the vertical oscillations

Three angular frequencies, close to each other, need first to be distinguished: the [Brunt-Väisälä](#) frequency (N), the neutral buoyant oscillation frequency (ω_{NBO}), and the observed frequency of SPB oscillations (ω_B). The frequency at which a spherical balloon with constant volume oscillates about its EDS, the neutral buoyant oscillation (NBO) frequency, reads (Hanna and

Hoecker, 1971; Nastrom, 1980; Vincent and Hertzog, 2014):

$$\omega_{\text{NBO}}^2 = \frac{4\pi^2}{t_{\text{NBO}}^2} = \frac{2g}{3T} \left(\frac{\partial T}{\partial z} + \frac{g}{R_a} \right) \quad (1)$$

where t_{NBO} is the NBO period, and g is the acceleration of gravity. The squared [Brunt-Väisälä](#) (BV) frequency, $N^2 =$
185 $g/T(\partial T/\partial z + g/c_p)$ can be expressed as a function of ω_{NBO}^2 :

$$N^2 = \frac{3}{2}\omega_{\text{NBO}}^2 - \frac{g}{\gamma H} = \frac{3}{2}\omega_{\text{NBO}}^2 - \frac{5}{7} \frac{g}{H} \quad (2)$$

where c_p is the air specific heat capacity at constant pressure, γ is the heat capacity ratio, and $H = R_a T/g$ is the atmospheric scale height.

From Eq. 2, it can be shown that $N \leq \omega_{\text{NBO}}$ as long as $\omega_{\text{NBO}}^2 \leq 10g/7H$, i.e. $t_{\text{NBO}} \geq 2.8\pi^2 H/g \approx 120$ s, or $\partial T/\partial z \leq$
190 $8g/7R_a \approx 39$ K/km. Such conditions are met very frequently in the lower stratosphere, if not always. Note that both ω_{NBO} and N increase with the vertical gradient of temperature $\partial T/\partial z$.

The top panel of Figure 3 displays the observed periods of the balloon vertical oscillations (t_B) for the whole 01_STR1 flight. The gray and white stripes correspond to nights and days respectively, the orange curve showing the daytime- and nighttime-averaged values. The histogram of the oscillations periods is shown on the bottom left panel, the periods are observed to
195 range from ~ 135 s to 800 s. No clear day/night variation is visible. The bottom right panel shows the cumulative distribution function (CDF) of the periods: the median t_B value is close to 220 s, while the mean is ~ 250 s. Hence, ω_B is larger than N , as long as N is smaller than $\approx 2.5 \times 10^{-2}$ rad/s, a typical value in the tropical lower stratosphere. We shall see below that ω_B is systematically larger than N .

Figure 4 shows the corresponding amplitudes of the observed balloon oscillations, as well as their probability and cumulative
200 distribution function. The observed amplitudes range from ~ 0 to ~~100~~150 m, with an average (resp. median) of 14 m (resp. 15 m) respectively. [Some large amplitude oscillations \(>100 m\) are observed. We found that they are most often associated with depressurization events.](#) A weak but clear day/night variability is found since the oscillations amplitudes are about 20% larger during daytime than during nighttime. ~~Such an increase during daytime likely explains the larger variability in altitude observations observed at high frequency~~ [Also, greater variability in altitudes is observed during daytime at high frequencies,](#)
205 which was reported in [Tabletable 3](#).

3 Data processing

3.1 Methods for detecting the occurrence of turbulence from the TSEN measurements

The time scales of the turbulent fluctuations are expected to be smaller than the [Brunt-Väisälä](#) period, t_N . (In the following, we shall refer to "high frequencies" for frequencies larger than $N/(2\pi)$.) As t_B is close, or even smaller ~~smaller~~ than t_N ,
210 the high-frequency variability up to the Nyquist frequency (1/60 Hz) will be dramatically affected by the balloon oscillations, whichever the state of the flow, laminar or turbulent. Hence, the detection of turbulence from either the variance, or from the spectral characteristics of the TSEN measurements at high frequencies appears difficult, if not impossible.

Strateole-2.0 flt01 STR1 2019-11-12 - 2020-02-27

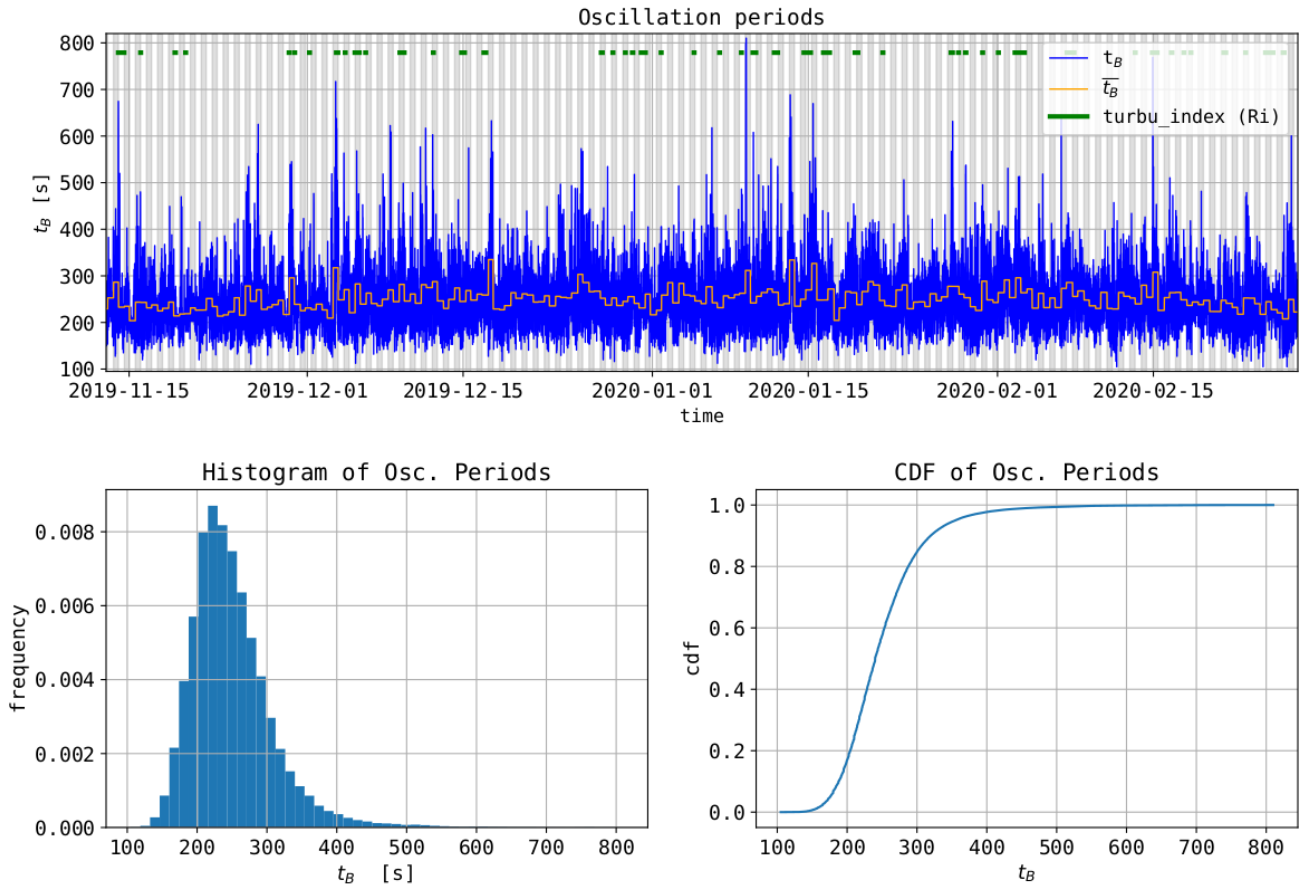


Figure 3. Top: estimates of the SPB oscillation periods during flight 01_STR1, the orange staircase curve showing daytime and nighttime averages. Bottom left: Histogram of the oscillation periods. Bottom right: cumulative distribution function of the oscillation periods.

Strateole-2.0 flt01 STR1 2019-11-12 - 2020-02-27

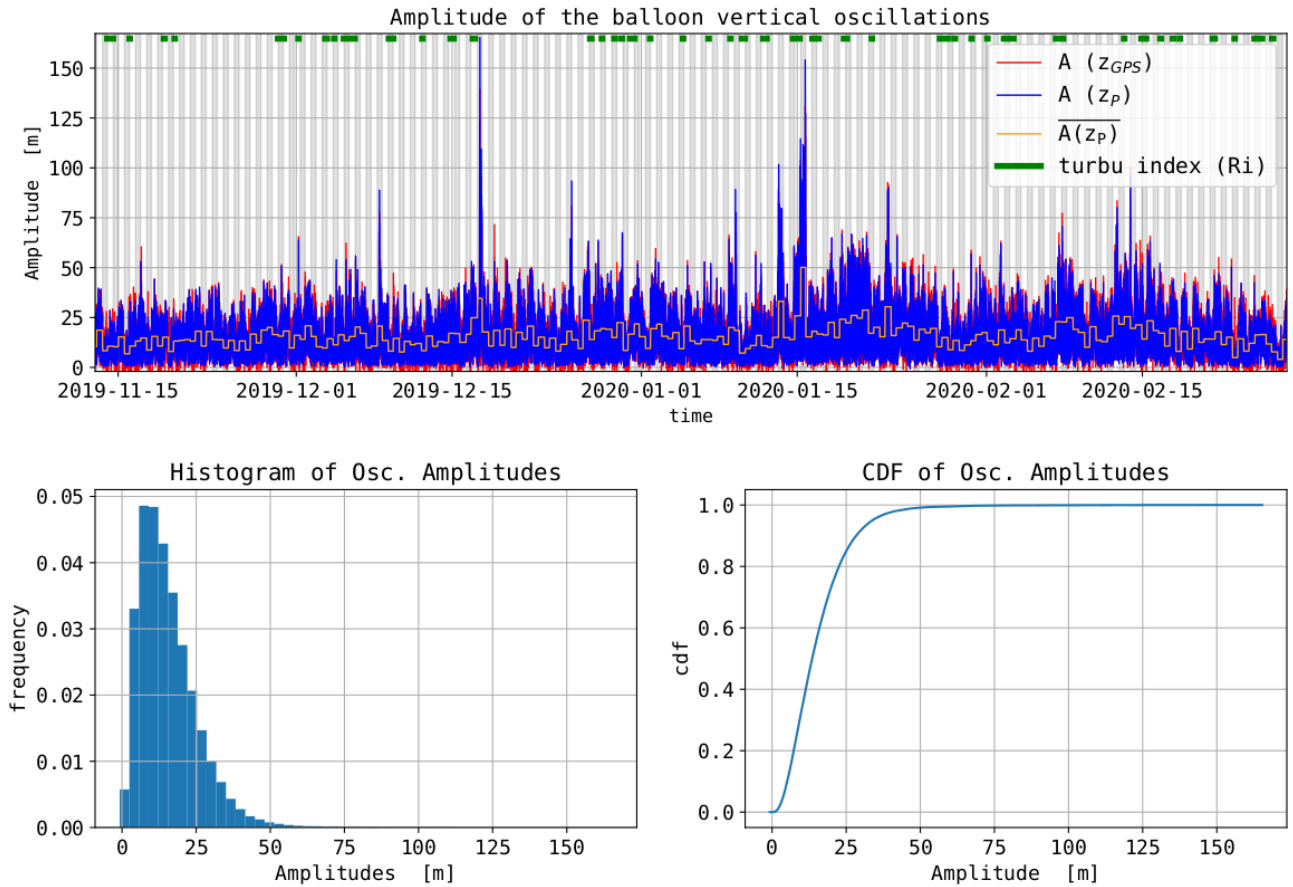


Figure 4. Top: Estimates of SPB oscillation amplitudes during flight 01_STR1, the orange staircase curve showing daytime and nighttime averages. Bottom left: Histogram of the oscillations amplitudes. Bottom right: CDF of the oscillations amplitudes

215 Diagnostics on the dynamical state of the flow can therefore only be based on the local properties of atmospheric stratification, either stable or neutral/unstable. A consequence of turbulence is ~~indeed to locally mix to restore stability from a preceding unstable state of the flow, which is achieved by locally mixing~~ the fluid. In this case, the conservative quantities, potential temperature, specific humidity, momentum, are expected to exhibit weak horizontal and vertical variability within the turbulent layer. Note that neutral or even unstable stratification conditions may precede turbulence, but such conditions cannot persist and will necessarily cause turbulence. Conversely, a laminar flow is expected to exhibit significant variability of the same quantities along the vertical direction.

220 Numerical simulations indicate that thin layers with large temperature gradients are expected at the edges of turbulent layers (Fritts et al., 2003; Werne and Fritts, 1999). These large temperature gradients are also commonly observed from radiosonde profiles when turbulence detection is performed by the Thorpe method (e.g. Luce et al., 2002). It is clear that the sampling by a balloon drifting within an air mass, and not cutting vertically through it as a radiosonde, will not allow to identify as turbulent such temperature gradients. Only the central part of the turbulent region, in which stratification is quasi neutral, can
 225 be identified as turbulent.

A first way to diagnose that the flow is turbulent is thus to detect a null gradient in potential temperature. In such a case, the correlation between the vertical displacements (δz_B) and the corresponding potential-temperature increments ($\delta\theta$) is expected to be null. The implementation therefore consists in testing the H_0 hypothesis of a null correlation between δz_B and $\delta\theta$. This method is hereafter called the correlation method. A second way to diagnose a turbulent flow is based on the estimation of
 230 the local Richardson number $Ri = N^2/S^2$, where $S^2 = (\partial u/\partial z)^2 + (\partial v/\partial z)^2$ is the squared shear. The flow is assumed to be turbulent when the Richardson number becomes less than 0.25. This method is hereafter called the Ri method.

3.2 Implementation of the two methods of turbulence detection

3.2.1 Relationship between the increments of measured quantities and the increments of vertical displacements

The two proposed methods of turbulence detection are based either on estimates of correlations (for the correlation method) or
 235 on linear regressions (for the Richardson method) between increments. The increments are simply defined as the differences between consecutive measures, separated by $\delta t = 30$ s. Such a differentiation realizes a high-pass filtering of the time series. Both the correlations and the linear regressions are computed over time periods of 1 hr, i.e. with 120 30-s observations. The choice of this number of observations enables to obtain relatively small uncertainties on the estimates of correlation coefficients and slopes, at the price of being unable to detect turbulence layers with time scale significantly shorter than 1 hr (in the frame
 240 moving with the wind).

The oscillatory motions of SPBs at frequency ω_B are expected to occur neither on isentropic surfaces nor on isopycnic surfaces. If the vertical displacement of the balloon between two different times separated by $\delta t = 30$ s is $\delta z_B = z_2 - z_1$, the change in the measured potential temperature $\delta\theta$ depends on both δz_B and on the vertical displacement of the atmosphere $\delta\zeta_\theta$ during δt :

$$245 \quad \delta\theta = \bar{\theta}_z(z_2 - z_1) = \bar{\theta}_z(\delta z_B - \delta\zeta_\theta) \quad (3)$$

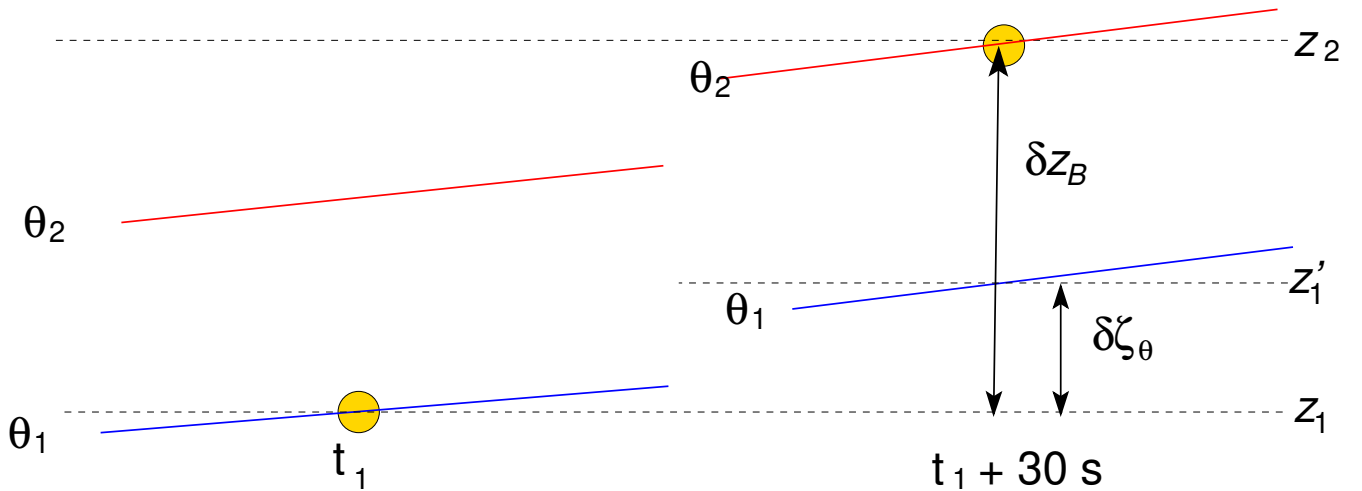


Figure 5. Schematic of the vertical displacement of a SPB. Between the measurement times t_1 and $t_1 + 30$ s, the vertical displacements of the SPB is δz_B , and the vertical displacement of the isentropic surface is $\delta \zeta_\theta$.

$\delta \zeta_\theta = z'_1 - z_1$ corresponding to the change in the height of the isentropic surface during δt (see Fig 5). Eq. 3 must be modified for non-conservative quantities, such as temperature T or horizontal velocities, u and v , in order to take into account the change of the considered quantity during δt on the isentropic surface. For instance, the temperature increment reads:

$$\delta T = \bar{T}_z \delta z_B - \left(\bar{T}_z + \frac{g}{c_p} \right) \delta \zeta_\theta \quad (4)$$

250 Figure 6 shows the power spectral density (PSD) of the vertical displacements (δz_B) for flight 02_STR2, either estimated from the GPS altitudes (δz_{GPS}) or from the pressure observations (δz_P). Both PSDs look very similar over the whole frequency range. A large spectral peak, centered at $\sim 4 \cdot 10^{-3}$ Hz, is observed on these PSDs. This spectral peak corresponds to the SPB oscillatory motions about their EDS with period ~ 220 s described in Section 2.3. Apart from long-duration balloons, radar is one of the [sole few](#) technique that is able to infer the air vertical velocity in the free atmosphere. Few radar-borne PSDs of the
255 vertical velocity have been published (Ecklund et al., 1986; VanZandt et al., 1991; Satheesan and Murthy, 2002). They either show a weak enhancement at frequencies close to N with respect to the spectral level at $\omega \lesssim N$, or no enhancement at all. It is thus believed that the high-frequency vertical displacements in the balloon observations, 15 m in the average, mostly result from the balloon oscillating motions about their EDS, rather than from the isentropic vertical displacements of air parcels. In other words, $\delta z_B \gg \delta \zeta_\theta$ in Eqs (3) and (4).

Strateole-2.0 flt02 STR2 2019-11-12 - 2020-02-23

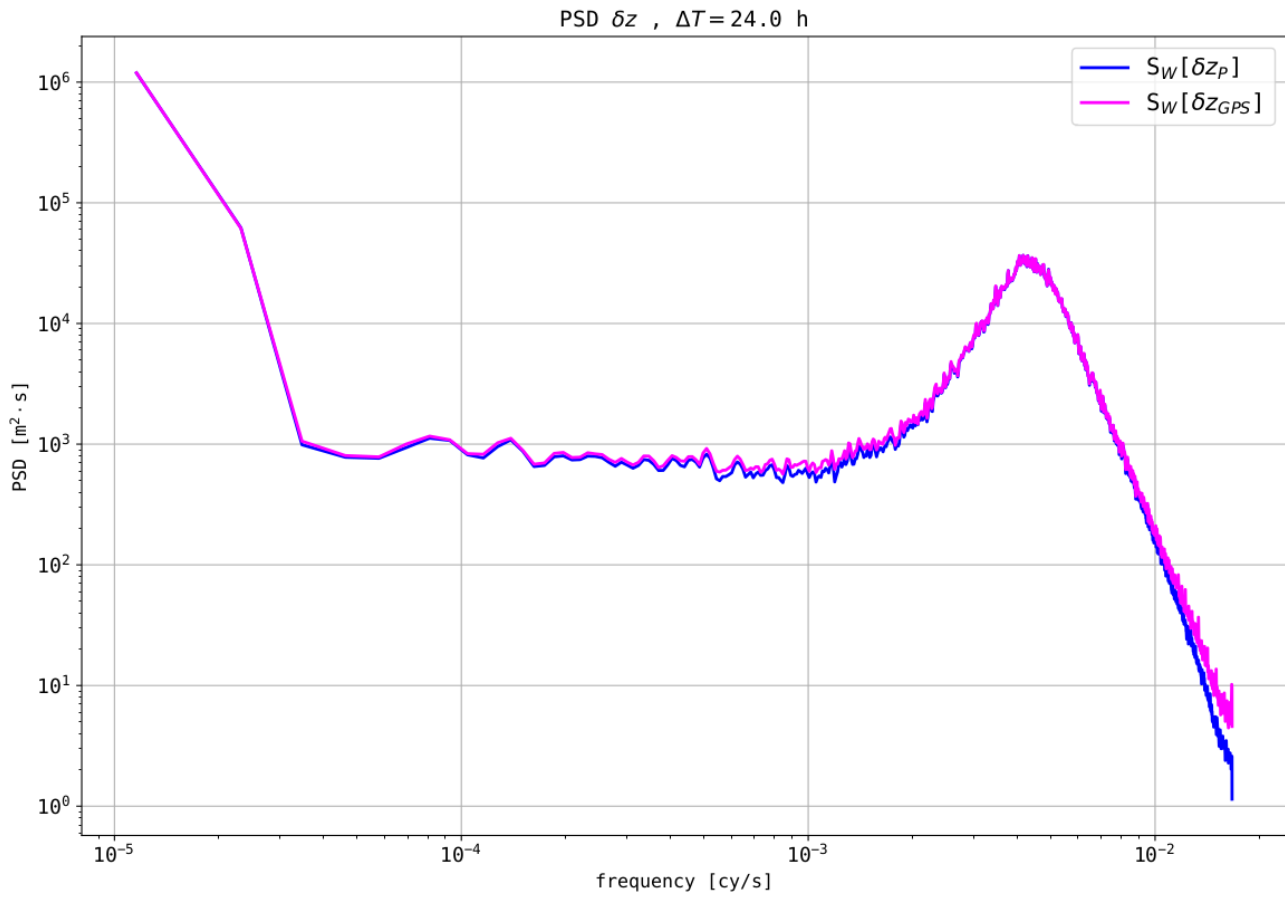


Figure 6. Power spectra of vertical increments of SPB heights, i.e. of vertical displacements between consecutive measurements (30s), for flight 02_STR2.

260 **3.2.2 The correlation method**

The covariance of two quantities X and Y , defined as $\text{Cov}(X, Y) = \text{E}[(X - \text{E}[X])(Y - \text{E}[Y])]$ where $\text{Cov}(X, Y) = \text{E}[(X - \text{E}[X])(Y - \text{E}[Y])]$ where E is the mathematical expectation, that is estimated by:

$$\text{Cov}(\tilde{X}, Y) = \frac{1}{N-1} \sum_{i=1}^N (X_i - \bar{X})(Y_i - \bar{Y}) \quad (5)$$

where N is the sample's size. The Pearson correlation coefficient $\rho_P(X, Y) = \frac{\text{Cov}(X, Y)}{\sigma_X \sigma_Y}$ $\rho_P(X, Y) = \frac{\text{Cov}(X, Y)}{\sigma_X \sigma_Y}$ is estimated by:

$$r_P(X, Y) = \frac{\text{Cov}(\tilde{X}, Y)}{s_X s_Y} \quad (6)$$

where s_X is the estimate of the standard deviation σ_X of quantity X , i.e. $s_X = \sqrt{\text{Cov}(\tilde{X}, X)}$ $s_X = \sqrt{\text{Cov}(\tilde{X}, X)}$. A second correlation coefficient, the Spearman's rank correlation coefficient, $r_S(X, Y)$, has also been used in the present study. It is a measure of the statistical dependence between the rank of two variables X and Y . It is computed as the Pearson correlation between the rank values of those two variables.

$$r_S(X, Y) = r_P(\text{rk}_X, \text{rk}_Y) \quad (7)$$

where rk_X is the rank of variable X , i.e. the sample X is replaced by the rank of X in the expression of r_P (Eq. 6). The use of the non-parametric Spearman correlation makes it possible to get rid of outliers in the time series (Spearman, 1904).

If the flow is stably stratified, the increments of potential temperature $\delta\theta$ are related to the vertical displacements of the SPB δz_B (Eq. 3). The covariance $\text{Cov}(\delta\theta, \delta z_B)$ reads: $\text{Cov}(\delta\theta, \delta z_B)$ reads:

$$\text{Cov}(\delta\theta, \delta z_B) = \text{E}[\delta\theta \times \delta z_B] = \text{E}[\bar{\theta}_z (\delta z_B \times \delta z_B - \delta z_B \times \delta\zeta_\theta)] \quad (8)$$

Noting that (i) $\delta\zeta_\theta \ll \delta z_B$, and (ii) that the vertical oscillations of the balloon and the displacements of the isentropic surfaces are expected to be non-synchronous since ω_B does not correspond to any atmospheric frequency ($\omega_B > N$), we assume that the covariance $\text{E}[\delta z_B \times \delta\zeta_\theta]$ $\text{E}[\delta z_B \times \delta\zeta_\theta]$ is negligible compared to the variance of δz_B , i.e.

$$\text{Cov}(\delta\theta, \delta z_B) = \text{E}[\bar{\theta}_z \delta z_B \times \delta z_B] \quad (9)$$

Notice that under the above hypothesis, the covariance of a non-conservative measured quantity X (T, u, v) reads:

$$\text{Cov}(\delta X, \delta z_B) = \text{E}[\bar{X}_z \delta z_B \times \delta z_B]. \quad (10)$$

If $\bar{\theta}_z$ is positive in the time interval during which the covariance is estimated, $\text{Cov}(\delta\theta, \delta z_B)$ $\text{Cov}(\delta\theta, \delta z_B)$ is expected to be positive. Moreover, if $\bar{\theta}_z$ is strictly constant during the time interval:

$$\bar{\theta}_z = \frac{\text{Cov}(\delta\theta, \delta z_B)}{\text{Var}[\delta z_B]} \quad (11)$$

If $\bar{\theta}_z$ is not strictly constant, as it is very likely the case, the ratio $\frac{\text{Cov}(\delta\theta, \delta z_B)}{[\delta z_B]} \frac{\text{Cov}(\delta\theta, \delta z_B)}{\text{Var}[\delta z_B]}$ can be interpreted as an estimate of the mean gradient $\bar{\theta}_z - \langle \bar{\theta}_z \rangle$ during the considered time interval at the flight level of the SPB. For a non-conservative quantities X :

$$\bar{X}_z = \frac{\text{Cov}(\delta X, \delta z_B)}{\text{Var}[\delta z_B]} \quad (12)$$

290 In the ideal case where $\bar{\theta}_z$ constant and there is no instrumental noise, $\sigma_{\delta\theta} = \bar{\theta}_z \sigma_{\delta z_B}$ and the correlation coefficient $r_P(\delta\theta, \delta z_B) = 1$, whatever $\bar{\theta}_z > 0$. This conclusion also holds for the Spearman correlation r_S if a linear relation is assumed between $\delta\theta$ and δz_B . if $\bar{\theta}_z > 0$ but is no more constant during the considered time interval, the correlation ~~coefficients~~ coefficient is smaller than one but is still positive since the product $\delta\theta \times \delta z_B$ is always positive. The correlation is further reduced, but remains positive, in the presence of uncorrelated noise (see appendix).

295

The first method to detect turbulent mixing is to check for a non-positive correlation, i.e. a null or negative correlation, between $\delta\theta$ and δz_B . In order to infer if the null hypothesis H_0 has to be rejected, that is if a positive correlation exists, a standard hypothesis test is performed. A confidence interval for the correlation coefficient is based on a Fisher transformation of the correlation estimate (Hotelling, 1953). The H_0 hypothesis is here rejected if the correlation estimate exceeds half of its
 300 standard deviation (unilateral test), the corresponding confidence level being 69.15%. If the H_0 hypothesis cannot be rejected, turbulent mixing is diagnosed, and the turbulence flag is set to 'True'. Two turbulence indices are built, either from the Pearson or Spearman correlations

Figure (7) illustrates the time series (top panel) and histograms (bottom panel) of r_P and r_S during one week of flight 02_STR2. Both correlations are estimated over time segments of one hour. The light-blue shaded areas show the \pm one standard deviation
 305 interval for the Pearson correlations only. The thick green lines at the top of the upper panel display the time interval during which turbulence is detected, i.e. when the turbulence indices are set to true.

As expected, the correlation coefficients are found to be positive most of the time. On a few occurrences during the time period shown in Figure (7), turbulence is detected as the correlation coefficients approach zero. A good agreement in the time periods identified as turbulent is found whatever the correlation method used.

310 3.2.3 The impact of instrumental noise on the correlation coefficients

The impact of measurement noise can be evaluated through the averages of the largest correlation coefficients, all corresponding a priori to $\bar{\theta}_z > 0$. Recall actually that, without instrumental noise, the correlation $(\delta\theta, \delta z_B)$ is ideally 1 if $\bar{\theta}_z > 0$ and keeps constant over 1 hr. As shown in Equation (B1) of the Appendix, it is the ratio of the instrumental noise to the variance of the “geophysical” signal that appears in the correlation coefficient. In other words, the larger the amplitude of the balloon
 315 oscillations about their EDS, the less the measurement noise reduces the correlation coefficient.

The Spearman and Pearson correlation coefficients have been estimated for both potential temperatures increments, $\delta\theta_C$ and $\delta\theta_S$, and for both altitudes increments, $\delta z_P = -\delta P/\rho_C$ and δz_{GPS} . Four turbulence indexes coefficients are thus estimated. We have then averaged the 50% largest correlation coefficients, i.e. the quantiles 50-100 of the coefficients, for each of the

Strateole-2.0 flt02 STR2 2019-12-08T00:00 - 2019-12-14T23:59

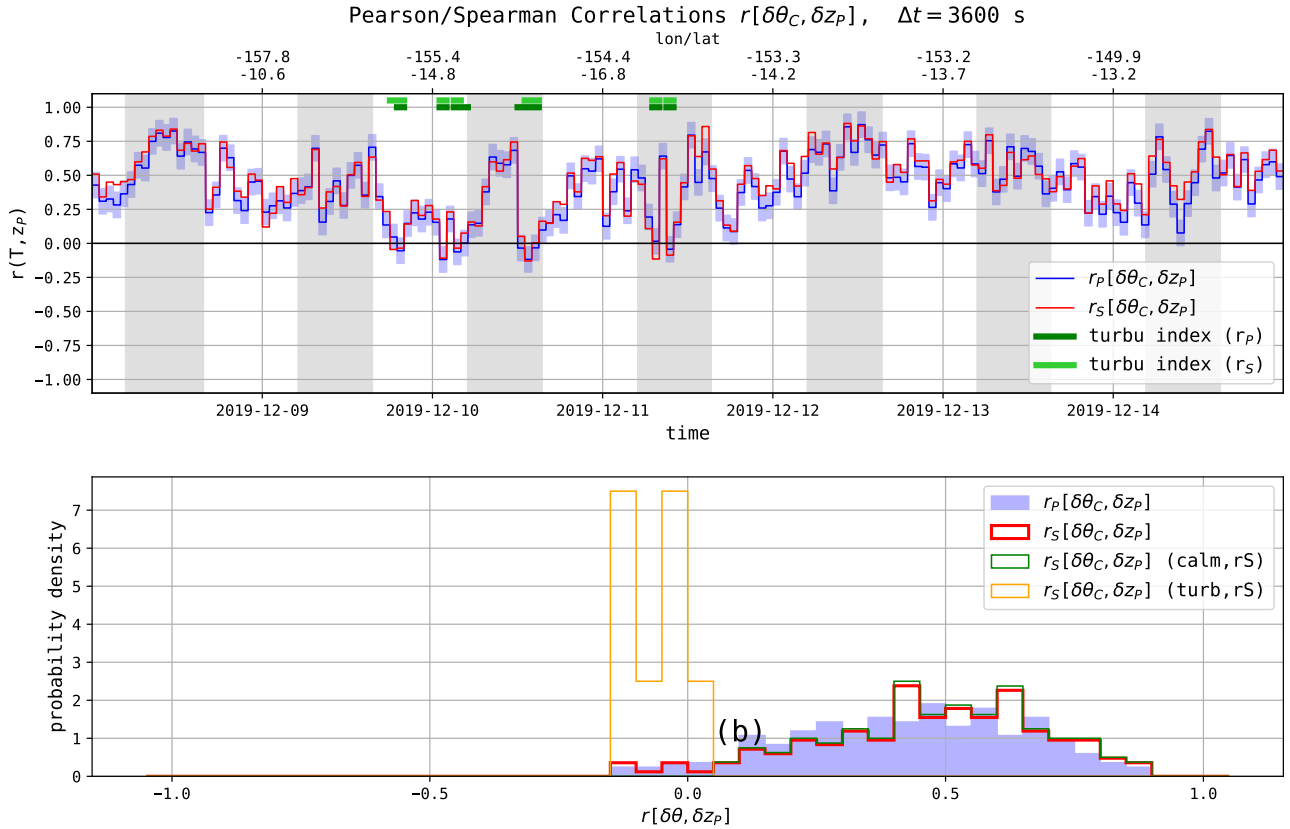


Figure 7. Top: time series of correlation coefficients r_P and r_S applied to the ~~the~~ increments potential temperature derived from T_C and vertical displacements from z_P . The correlations are evaluated on one-hour time segments (120 samples). The time series runs for seven days, from 08/12/2019 to 15/12/2019, the grey vertical stripes indicating nighttime. The light-blue shaded areas show the \pm one standard deviation interval for the Pearson correlations. Bottom: histograms of the two correlation coefficients obtained during the week. The blue (filled) and orange-red (thick line) ~~corresponds correspond~~ to all the one-hour time segments, the thin green and red-orange lines ~~corresponds correspond~~ to the calm (non-turbulent) and turbulent time intervals.

eight flights (table 4). These averaged coefficients give information, at least relatively, on the quality of the data and on the performance of the turbulence estimators: the larger the correlations, the smaller the impact of instrumental noise.

Flight Id	r_S	r_P	r_S	r_P	r_S	r_P	r_S	r_P
	$\delta\theta_S, \delta z_P$	$\delta\theta_S, \delta z_P$	$\delta\theta_S, \delta z_{GPS}$	$\delta\theta_S, \delta z_{GPS}$	$\delta\theta_C, \delta z_P$	$\delta\theta_C, \delta z_P$	$\delta\theta_C, \delta z_{GPS}$	$\delta\theta_C, \delta z_{GPS}$
01_STR1	0.563	0.566	0.544	0.540	0.592	0.589	0.570	0.561
02_STR2	0.640	0.638	0.643	0.640	0.681	0.671	0.683	0.673
03_TTL3	0.402	0.284	0.392	0.278	0.464	0.319	0.457	0.315
04_TTL1	0.614	0.604	0.603	0.588	0.678	0.646	0.665	0.630
05_TTL2	0.605	0.572	0.600	0.566	0.668	0.657	0.661	0.648
06_STR1	0.569	0.549	0.547	0.524	0.622	0.593	0.603	0.569
07_STR2	0.585	0.566	0.563	0.537	0.587	0.556	0.564	0.527
08_STR2	0.639	0.631	0.638	0.629	0.699	0.685	0.697	0.683

Table 4. Averages of the 50% largest correlation coefficients between $\delta\theta$ and δz . Spearman and Pearson coefficients are displayed for the four combinations between $\delta\theta_S, \delta\theta_C$ and $\delta z_P, \delta z_{GPS}$. About 1200 coefficients are here averaged for each flight. The largest correlation coefficient is displayed in bold for each flight. The larger the correlations, the smaller the impact of instrumental noise (see text).

Table 4 again illustrates that Flight 03_TTL3 is abnormally noisy because of the poorer (potential) temperature measurements (cf Table 2). Systematically, we observe that:

1. the correlations are larger when using θ_C rather than θ_S ,
2. there is a slight amelioration in using δz_P rather than δz_{GPS} ,
3. the Spearman correlations (r_S) are slightly larger than the Pearson correlations (r_P).

We shall therefore prefer the Spearman estimator, using δT_C (and derived $\delta\theta_C$) combined with δz_P in evaluating both the correlations and the vertical gradients from which the turbulent indices are estimated, as the impact of instrumental noise appears to be less in this estimator.

3.2.4 The Richardson method

The second detection method is based on an evaluation of the local Richardson number Ri . Notice that $\bar{\theta}_z$ (Eq. 11) is nothing else than the slope of a least square linear regression between the 120 potential-temperature ($\delta\theta$) and vertical-displacement increments (δz_B). This method of estimating the vertical gradient of the potential temperature is labeled the least square fit (LSF) method in the following. An alternative fitting method, the so-called Theil-Sen fitting (TSF) method has also been used (Sen, 1968). The Theil-Sen estimator is defined as the median of the slopes of all lines through pair of points of the sample. It is a non-parametric and robust method, almost insensitive to outliers. Both fitting methods have been applied to estimate the vertical gradients of several measured quantities, such as T , P or horizontal wind velocities u and v (Eq.12).

Two estimates of the mean [Brunt-Väisälä](#) frequency are thus computed with either the LSF or the TSF, applied to δT_C and δz_P , which were respectively identified as the less noisy estimates of the air temperature and vertical displacements (see Ta-

bles 2 and 3). The squared shear, evaluated from the vertical gradients of the horizontal velocities, is obtained similarly. Two
340 turbulence indices are hence built by using LSF and TSF estimates of the Richardson number, and are set to 'True' if $Ri \leq 1/4$.

The upper panel of Figure (8) displays the vertical gradients of temperature for the same one-week time series than in
Figure 7. Estimates are shown for only the thermocouple temperatures and vertical displacements obtained with the pressure
increments. Time series (not shown) obtained from other pairs of variables (by using T_S or T_C , z_{GPS} or z_P) are very similar
345 to the one presented, whatever the used fitting method. The uncertainty (\pm one standard deviation) is shown in light-red for
the LSF estimator, as well as the turbulence detection criteria based on the Richardson number (thick green lines at the top
of the figure). The bottom panel of Figure (8) shows the probability distribution functions (PDF) of the vertical gradients of
temperature shown above (filled in blue and thick curve). PDFs corresponding to turbulent and calm (i.e. non-turbulent) periods
according to the Richardson number criterion are also displayed in thin lines.

350 First, it should be noticed that the choice of the LSF or TSF estimates for the vertical gradient of temperature or for the
turbulence index has only a minor impact. Similarly, the choice of the time series parameters (z_P or z_{GPS} , T_C or T_S) and any
combination of those has little influence on the detection of turbulence layers (not shown). Figure 8 also clearly illustrates
that the time periods flagged as turbulent by the Richardson number index are associated with the small-value tail of the
temperature-gradient PDF ($dT/dz \lesssim -10$ K/km). Last, those time periods are essentially the same than the one shown in
355 Figure 7, which have been obtained with the correlation method.

4 Results

4.1 Turbulence detection with the correlation method

The top panel of figure 9 displays the time series of both the Spearman and Pearson correlations coefficients between $\delta\theta_C$ and
 δz_P for the whole flight 02_STR2. As previously, the correlations are estimated on time segments of one hour (120 samples).
360 They are ranging from ~ -0.5 to 0.96. Both time series exhibit very similar variations, showing time intervals lasting several
days with relatively large correlations (> 0.7) and short bursts of time with low or even negative correlations. Two turbulence
indices inferred from the Spearman and Pearson correlation methods are shown as thick green lines at the top of the plot. The
fraction of time during which the flow is detected turbulent for flight 02_STR2 is 4.5% (resp. 4.4%) from the Spearman (resp.
Pearson) correlations (see Table 5). Time series and histograms of correlations obtained by using measurement of $\delta\theta_S$ or δz_{GPS}
365 (not shown) provide time series that are almost indistinguishable from those shown in Figure 9.

The bottom panel of figure 9 shows the PDFs of the two correlation coefficients over the whole flight (filled in blue and
thick red line). Both distributions are observed to be almost identical, although r_S is slightly, and systematically, larger than
 r_P for correlations larger than 0.5. The average values for both correlation coefficients are close: $\overline{r_S[\delta\theta_C, \delta z_P]} = 0.50$ and
 $\overline{r_P[\delta\theta_C, \delta z_P]} = 0.48$. The thin lines show the PDFs of r_S for turbulent-only (redorange) and laminar-only time periods (green).
370 The PDFs associated with the laminar time periods are almost identical to those of the whole flight, since they correspond to

Strateole-2.0 flt02 STR2 2019-12-08T00:00 - 2019-12-14T23:59

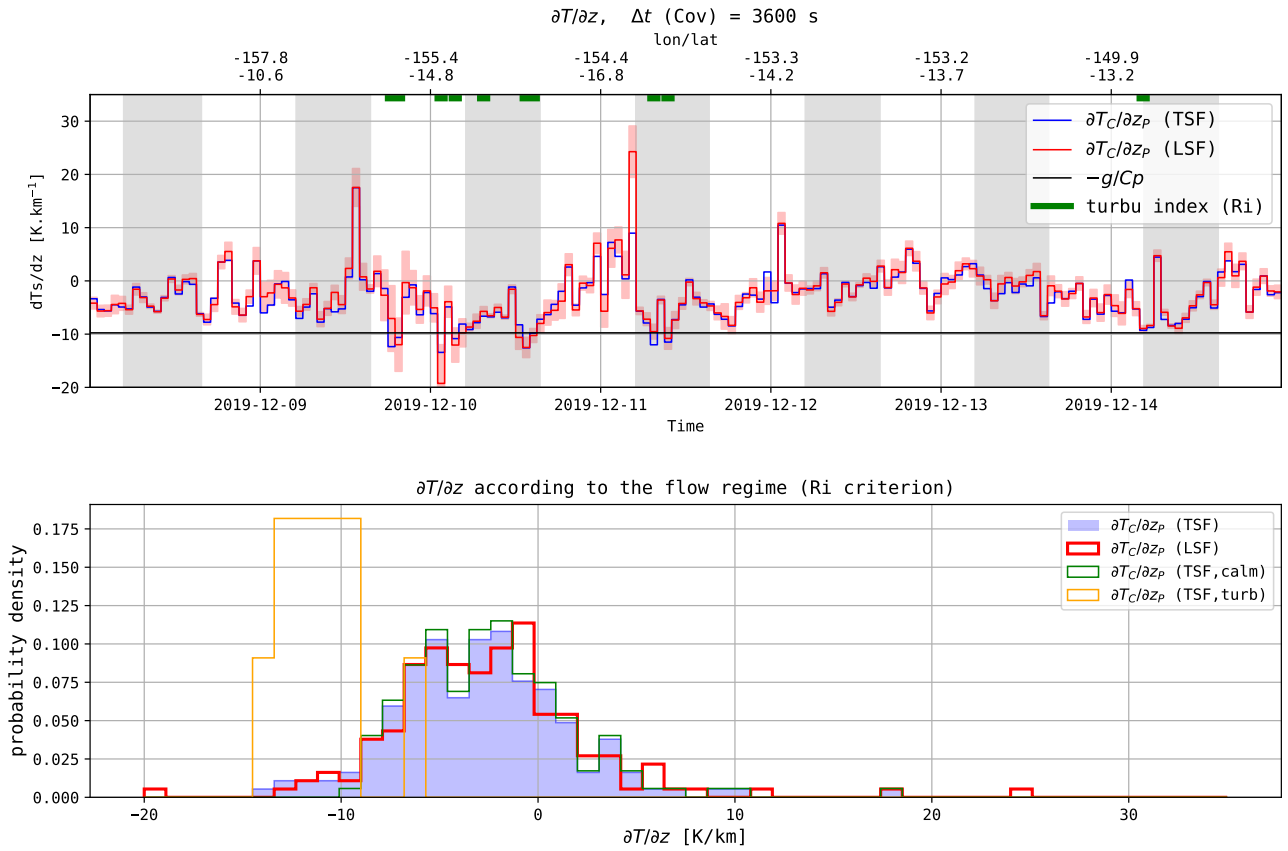


Figure 8. Top: time series of $\partial T/\partial z$ estimated by two fitting methods, least square (LSF) and Theil-Sen (TSF) from T_C and z_P . Linear fits are performed on one-hour time segments (120 samples). The light-red shaded areas show the \pm one standard deviation interval for the LSF estimates. Bottom: histograms of the temperature gradients by the two methods. The histograms corresponding to the turbulent and laminar time segments are also plotted (light curves).

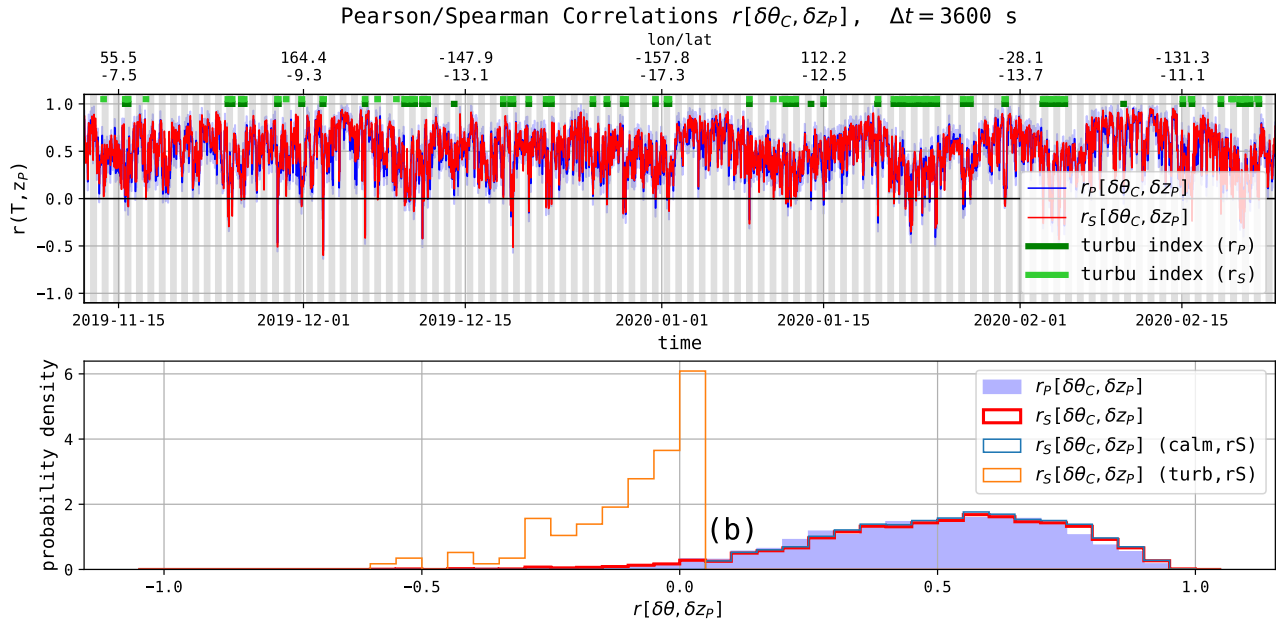


Figure 9. Top: time series of the Spearman and Pearson correlation coefficients between $\delta\theta_C$ and δz_P during flight 02_STR2 (103 days). The turbulence indexes deduced from the two correlations are shown (thick green lines at the top of the plot). Bottom: Histograms of the Spearman (thick line) and Pearson (filled) coefficients for flight 02_STR2. Also shown, the histograms corresponding to the turbulent and laminar cases (thin lines). The time series and histograms of the two correlation coefficients are very similar even though few differences in turbulence detection are visible.

about 95% of the data. The turbulent time periods correspond only to the small-value tail of the overall distribution.

The fractions of time during which the flow is found turbulent with the correlation method are reported in Table 5 for the eight flights of the campaign. They look overall very consistent, typically ranging between 4.5% and 6.5%, with the exception of flight 03_TTL3, which is associated with noisier temperature measurements.

4.2 Estimations of the vertical temperature gradient with fitting methods

Figure 10 shows estimates of $\partial T/\partial z$ for flight 02_STR2 inferred from the linear fitting of the increments of temperature and vertical displacements during hourly intervals. More precisely, the upper panel of this figure shows the vertical temperature gradient obtained with the TSF method applied to δT_C and δz_P . Time series obtained by using other combinations of measured variables and fitting methods (not shown) are almost indistinguishable from the one shown in Figure 10. The dry adiabatic lapse rate $\Gamma = -g/c_P$ is also indicated as a black line. The turbulence index based on Ri is shown as a thick green discontinuous line at the top of the upper panel. The lower left panel shows the PDFs of $\partial T/\partial z$ for the whole flight, and by distinguishing calm

Flight Id	$r_S(\delta\theta_C, \delta z_P)$	$r_P(\delta\theta_C, \delta z_P)$	$Ri(\delta\theta_C, \delta z_P)$
01_STR1	5.1	4.9	3.7
02_STR2	4.5	4.4	3.7
03_TTL3	11.2	21.5	15.6
04_TTL1	3.8	4.9	3.4
05_TTL2	6.6	6.6	5.7
06_STR1	5.8	6.6	4.3
07_STR2	5.5	6.3	3.3
08_STR2	5.5	6.2	5.7

Table 5. Fraction of time (percent) during which the flow is found to be turbulent. Turbulence is diagnosed from the correlation method based of $\delta\theta_C$ and δz_P (two first columns) and from the $Ri(\delta T_C, \delta z_P)$ criterion (last column).

and turbulent time periods. The distribution of $\partial T/\partial z$ is found very asymmetric, the mode being close to -4K/km . Most of the turbulent cases are associated with $\partial T/\partial z < \Gamma$, few of them being associated with $\partial T/\partial z > \Gamma$. The cumulative distribution function (CDF) of the temperature gradients are displayed on the lower-left panel. About 80% of the detected turbulent cases, associated with $Ri < 0.25$, correspond to super-adiabatic temperature gradient.

Based on $\partial T/\partial z$ estimates, the [Brunt-Väisälä](#) and NBO frequencies can be evaluated, cf. Eqs. (1) and (2). Figure 11 displays the squared [Brunt-Väisälä](#) (N^2), theoretical NBO (ω_{NBO}^2) and observed balloon (ω_B^2) frequencies for the whole 02_STR2 flight. [Brunt-Väisälä](#) and NBO frequencies are deduced from the hourly estimates of $\partial T/\partial z$. The observed balloon frequencies are directly estimated from the observations of the balloon oscillations (Fig. 3). A 60 min running average is then applied to the raw ω_B time series. The three frequencies are close, but distinct, to each other, the observed balloon frequency ranging between N and ω_{NBO} . The CDF of frequency ratios (lower right panel) reveal that $\sim 9695\%$ of the measured ω_B are smaller than the ω_{NBO} estimates, and that 2019% of ω_B are smaller than N . This property is consistent with numerical simulations of the motion of a spherical SPB assuming atmospheric forcing occurs at frequencies lower than the [Brunt-Väisälä](#) frequency (Podglajen et al., 2016, in particular see the supplementary information).

Figure (12) shows the histograms of $T_z = \partial T_C/\partial z_P$ for flight 3 obtained from the TSEN measurements (TSF method) and from the RACHuTS temperature profiles - down to two kilometers below the balloon. The vertical gradients of the RACHuTS temperature are estimated on 30 m vertical segments. The RACHuTS histogram has common features with the TSEN histograms: asymmetric distribution, same negative modes, sharp transition around -10°C/km . These distributions are considered to be consistent despite the fact that they are not obtained in the same altitude domain and not simultaneously.

4.3 Turbulence detection with the Ri method

Figure 13 shows estimates of the Richardson number along Flight 02_STR2 obtained either by the LSF or TSF estimates with T_C , z_P , u and v observations. The corresponding two turbulence indices ($Ri \leq 1/4$) are also shown on the top of the upper

Strateole-2.0 flt02 STR2 2019-11-12 - 2020-02-23

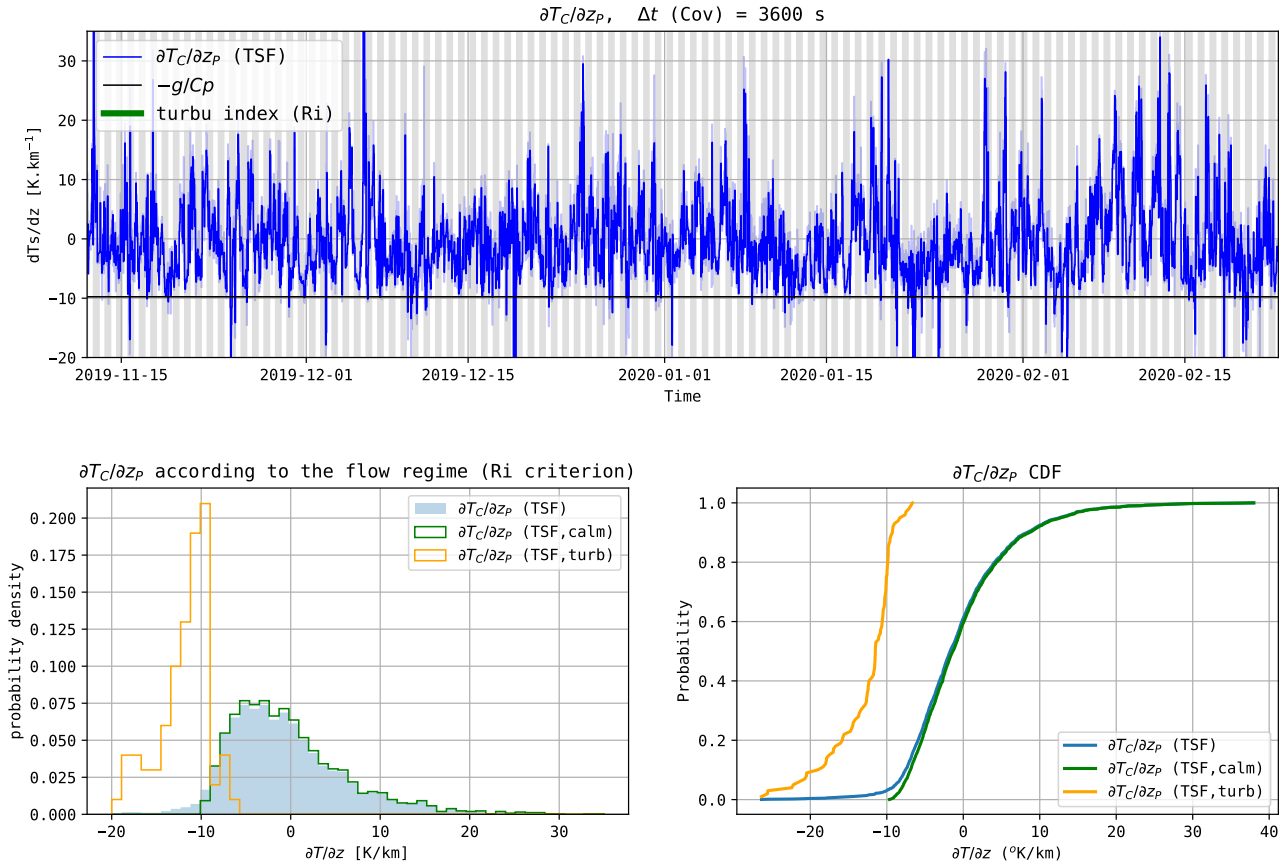


Figure 10. Top panel: two estimates of $\partial T_C / \partial z_P$ for flight 02_STR2, from the linear fitting of T_C and δz_P on hourly intervals. The black line shows the adiabatic lapse rate $-g/c_p$. The Ri turbulence index is drawn on the top of the figure as a thick green discontinuous line. Bottom left: Histograms of $\partial T_C / \partial z_P$ for all the time intervals (filled in blue) and by distinguishing the laminar and turbulent cases (thin lines). Bottom right: CDF of the temperature gradients.

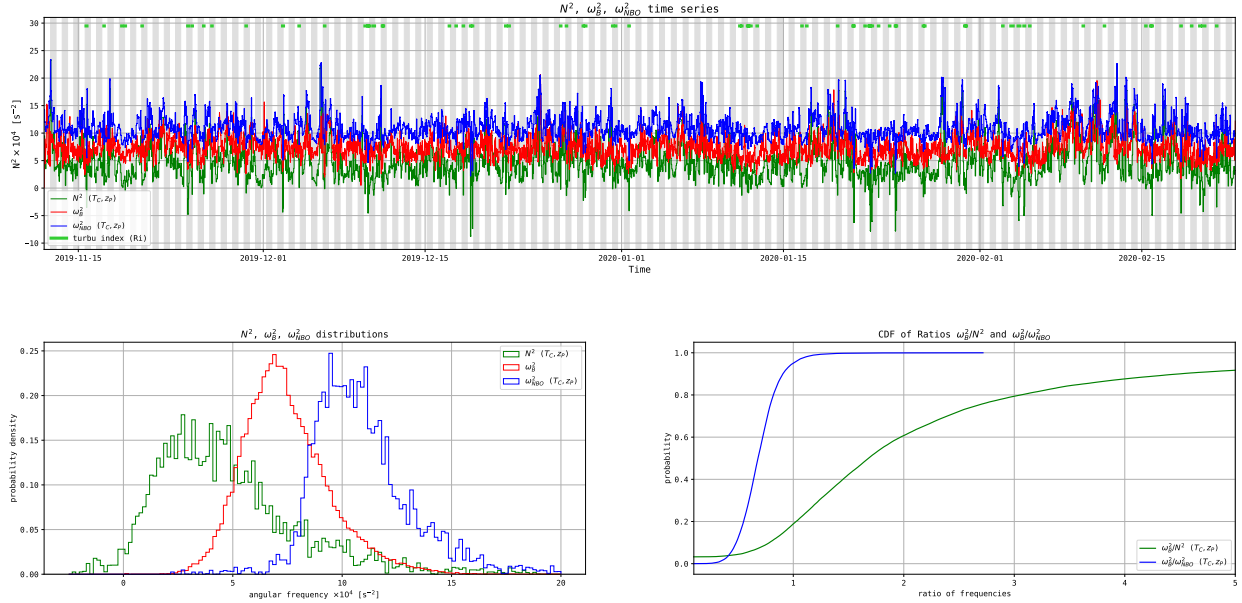


Figure 11. Brunt-Väisälä, NBO and observed balloon frequencies. Brunt-Väisälä and NBO frequencies are deduced from the estimates of $\partial T/\partial z$ from $\text{Cov}(\delta T_C, \delta z_P) \text{Cov}(\delta T_C, \delta z_P)$: times series (top), histograms (lower left), CDF of the ratios ω_B^2/N^2 and $\omega_B^2/\omega_{\text{NBO}}^2$ (lower right).

405 panel (green thick line). The bottom plot of Figure 13 displays the histograms of the two Ri estimates. The time series and histograms of the two Ri estimates look very similar even though few differences in the turbulence detection are visible.

As shown in Table 5, the fraction of time during which the flow is found turbulent according to the Ri criterion is 3.7% on Flight 02_STR2. More generally, the detection of turbulent flow during the Strateole-2 C0 campaign ranges from 3.3 to 5.7% of the time, with the exception of Flight 03_TTL3. ~~Thesse fraction of time is close to, yet almost systematically smaller than~~
 410 ~~those obtained with the correlation method.~~

5 Discussion

5.1 Possible impact of wake on the temperature measurements

Due to the vertical oscillations of the balloon, the T-sensors are possibly in the wakes of the balloon or of the chain flight.
Note that we expect the balloon wake to be warm during daytime and cold during nighttime, the balloon being cooler than the
 415 ambient air during nighttime.

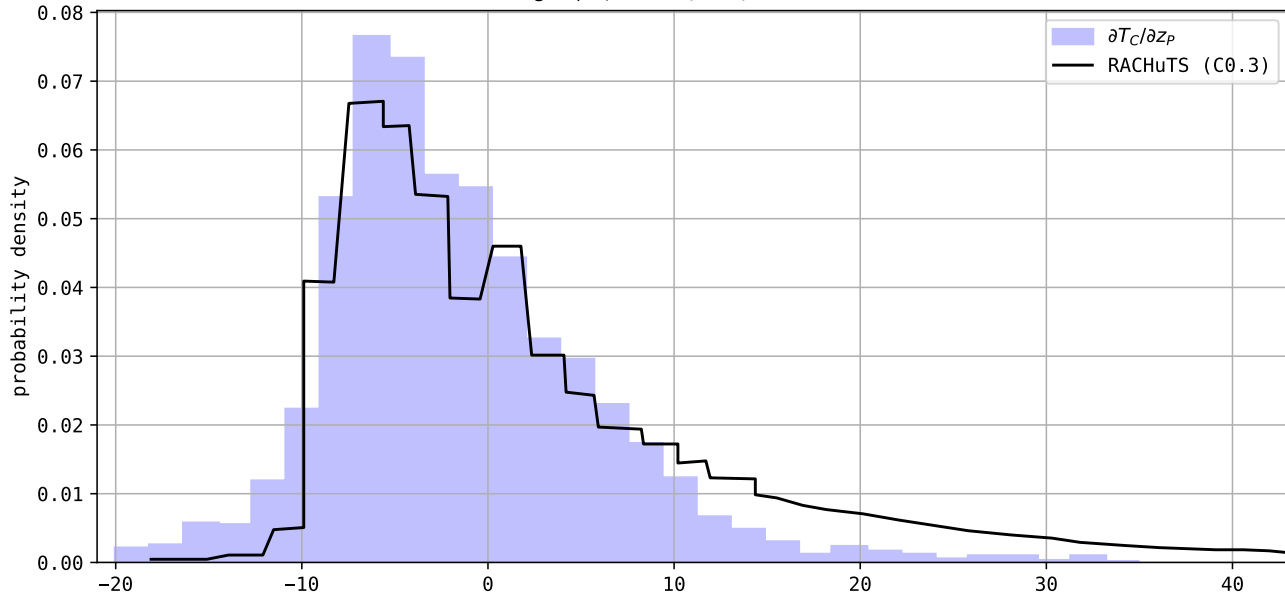


Figure 12. Histograms of $\partial T_C / \partial z_P$ from the TSEN measurements (flight 03_TTL3) and from the RACHuTS temperature profiles are superimposed. The two histograms have common characteristics despite the fact that they are not obtained at the same altitude levels.

The temperature sensors are located 27 m below the balloon base (except for 03_TTL3 flight) and 15 m below the EUROS gondola. The diameter of the balloons is either 11 m (TTL) or 13 m (STR). On all but TTL3 flights, the T-sensors are located 7 m below the last gondola in the flight chain. Flight 03_TTL3, carrying the RACHuTS system, is an exception since the temperature sensors are located 30 cm away from the EUROS gondola.

420 The question of the possible impact of the wake on temperature measurements has been taken into account. Indeed, we have calculated the statistics, vertical gradients and correlations, considering only the downward phases of the oscillations, i.e. when the temperature sensors (which are located at the lower end of the flight chain) sample the "fresh" air if a minimum shear exists. The resulting time series (not shown) are noisier since we only consider about half of the samples. However, both time series of correlations and temperature gradients have similar characteristics to those calculated when considering all samples,

425 showing the same succession of stable and unstable periods. We therefore conclude that the impact of the wake does not affect significantly the estimated statistics, correlations and covariances, and because of the increase of noise we choose to consider all the samples.

Strateole-2.0 flt02 STR2 2019-11-12 - 2020-02-23
Time series of Richardson Number $Ri[T_C, z_p]$, flight 2

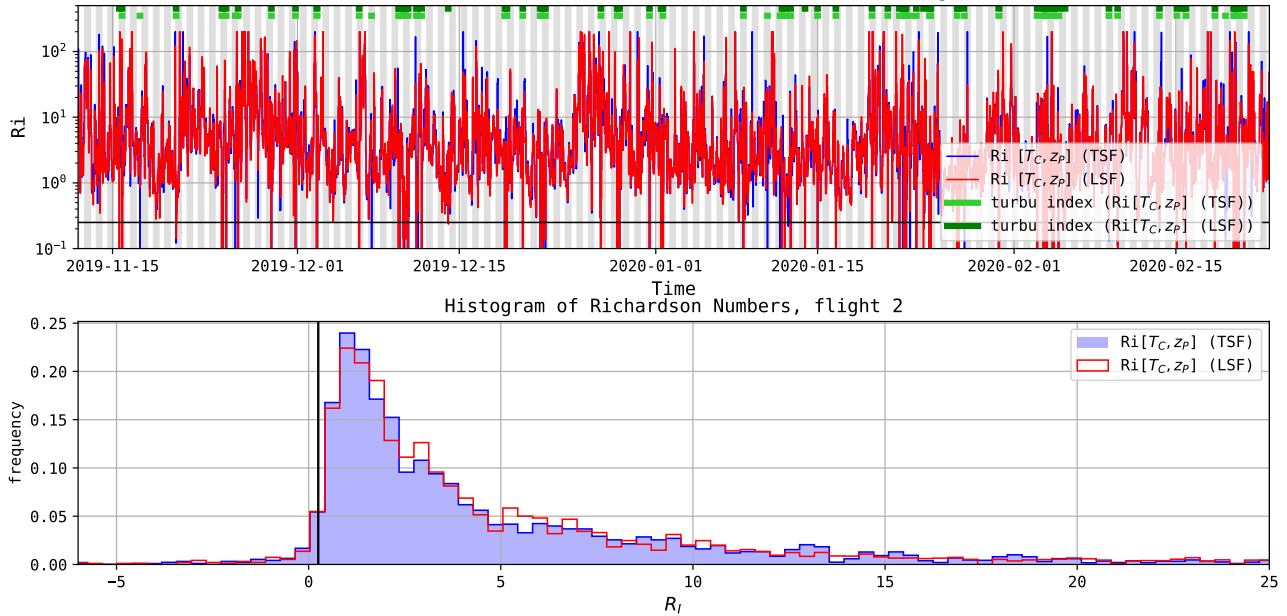


Figure 13. Top panel: Richardson number estimates from T_C , u , v and z_P , by using the least square fitting (LSF) and Theil-Sen fitting (TSF) methods. The thick black line shows the threshold $Ri = 0.25$. The two inferred turbulence indexes are shown (thick green lines at the top of the plot). Bottom panel: histograms of the two Richardson numbers estimates.

5.2 Comparison between the turbulence indexes

Table 6 ~~furthermore~~ shows the percentage of identical detections ~~with, laminar or turbulent, of~~ the four turbulence ~~indices over~~ ~~indexes, r_P , r_S , Ri_{LSF} and Ri_{TSF} , for~~ the eight balloon flights. The percentage of similar ~~turbulence detection with these four~~ ~~indices~~ ~~detections~~ ranges from 97.9% (r_S vs. Ri_{LSF}) to 99.07% . ~~However, as pointed out by an anonymous reviewer, such overall agreement does not imply equally good agreement between estimators when turbulence is detected. Choosing Ri_{TSF} as a reference, we compared the diagnoses with the other three estimators, Ri_{LSF} , r_P and r_S . Figure 14 shows the percentages of similar and different detections when the flow is diagnosed as turbulent (T) or laminar (L). It reveals that the detections are similar for more than 99% of the cases if the flow is diagnosed as laminar. If the flow is diagnosed as turbulent, the rate of identical detections drops to about 80%, the comparison being the worst for r_P (76%), and comparable for r_S and Ri_{LSF} vs-~~ ~~Ri_{TSF} .~~ ~~The different turbulent indices are therefore very consistent.~~ (respectively 83.2% and 85.4%). We believe that these differences result mainly from the fact that the threshold values, zero correlation or $Ri = 0.25$, correspond to the tails of the distributions of these estimates (see the histograms of Figs 9 and 13). When the atmosphere is weakly stratified, threshold effects are likely to be important, leading to some differences in the diagnoses of flow conditions.

	$r_P[T_C, z_P]$	$r_S[T_C, z_P]$	$Ri_{LSF}[T_C, z_P]$	$Ri_{TSF}[T_C, z_P]$
$r_P[T_C, z_P]$	100	98.95	98.46	98.42
$r_S[T_C, z_P]$		100	97.90	98.59
$Ri_{LSF}[T_C, z_P]$			100	99.07

Table 6. Percentage of identical turbulence detections from four turbulence index by using (T_C, z_P) for flight 02_STR2

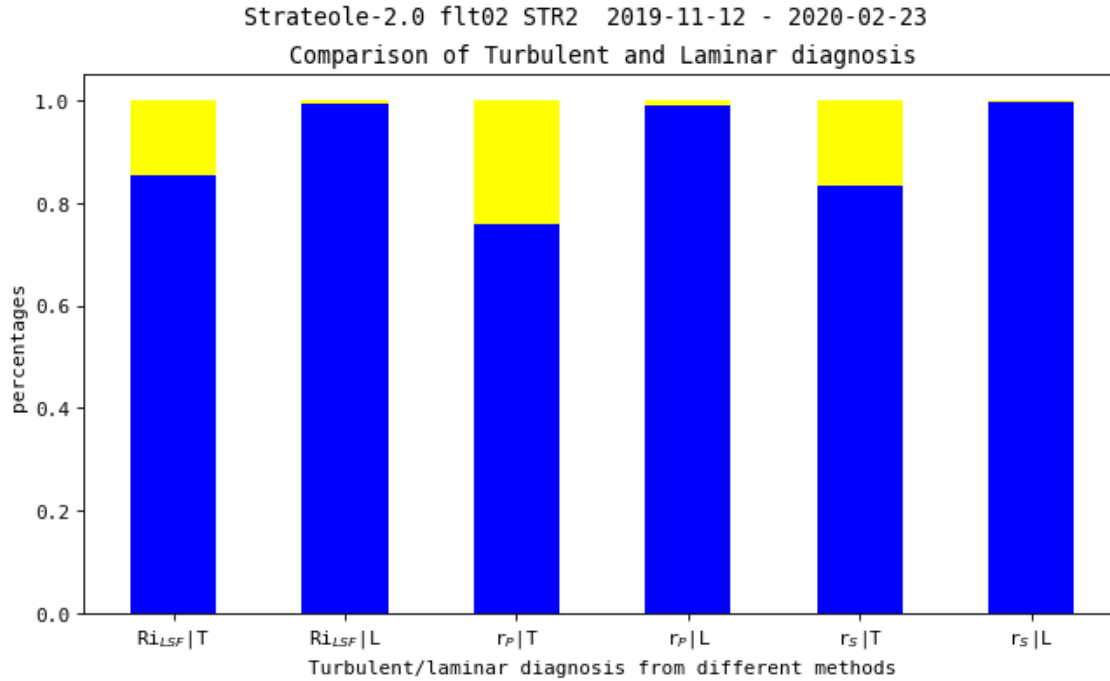


Figure 14. Percentages of true (similar) and false (different) detections for turbulent (T) and laminar (L) episodes diagnosed by the Ri_{TSF} criterion. The three estimators Ri_{LSF} , r_P and r_S are compared to Ri_{TSF} . The rate of agreement is larger than 99% in case of laminar flow, about 80% in case of turbulent flow.

We also found that the time fraction of turbulent episodes obtained by the Ri criterion is almost always smaller than that obtained by the correlation methods (Table 5). This can be partly due to the thresholds values of the hypothesis tests of a null correlation (i.e. to the choice of a confidence interval).

6 Summary and concluding remarks

445 ~~The present paper mainly dealt mainly-~~

5.1 Occurrences of negative values for Ri and N^2

The time series of N^2 (Fig. 11) and Ri (Fig. 13) show some negative values. For the considered flight (02_STR2), the occurrence frequency of negative N^2 is 3.4% (from the Theil-Sen regression performed on T_C and z_P). Such negative N^2 (of Ri) can result from both the dispersion of the temperature gradients estimates and the occurrences of episodes of unstable stratification.

Negative estimates of N^2 (Ri) could be due to the precision of the temperature gradients estimates which are expected to be scattered around a value close to $-10^\circ/\text{km}$ in case of neutral stratification. Temperature gradients are estimated from the covariance of temperature increments and displacements, with these covariances scattered around their mean values. As a result N^2 estimates can be negative even if the stratification is neutral, or nearly neutral.

However, unstable stratifications ($N^2 < 0$) seem to occur in the lower stratosphere since they have been reported in the literature. For instance, detection of turbulence by the Thorpe method from in-situ measurements is based on observations of $\partial\theta/\partial z < 0$, i.e. $N^2 < 0$ (Thorpe, 1977). The probability of occurrence of such unstable layers likely depends on the vertical resolution of the profiles (see for instance Wilson et al., 2011) but it not zero. In the lower stratosphere, KHI are expected to be the main source of instability. For KHI, turbulence is expected to be triggered for $0 < Ri < 1/4$, i.e. for $N^2 > 0$, but once it is developed, the stratification can become almost neutral ($N^2 \approx 0$), or even unstable ($N^2 < 0$), as a result of stirring and mixing. Therefore, it is plausible that the occurrences of unstable episodes may also contribute to negative values for N^2 , or Ri , estimated from covariances.

5.2 Spatial inhomogeneity of turbulence detections

The detection of turbulent episodes is far from uniform over the globe. Figure 15 shows the positions of the turbulence detections as green dots for the eight flights of the C0 campaign. Turbulence detections seem to be very rare over some regions, e.g. the South Atlantic Ocean, and quite frequent over other regions, e.g. the maritime continent or the western Pacific. At the present stage, this result is only qualitative, but interestingly these inhomogeneities are likely related to the causes of the turbulence occurrences. The study of the processes at the origin of the turbulence episodes in the UTLS is in progress.

6 Summary and concluding remarks

The present paper dealt with the detection of turbulence on superpressure balloon flights that drift for several months in the UTLS. During the Strateole-2 C0 campaign, eight SPBs were launched. Statistical methods to infer the flow regime, either laminar or turbulent, in which the SPB is drifting are described. Some properties of the local stratification of the flow are also inferred. These methods are based on the in-situ GPS altitude, pressure and temperature measurements, which are performed on all the SPBs of the Strateole-2 C0 campaign with a time resolution of 30 s.

We make use of the SPB oscillations about their equilibrium density surface, which enable SPBs to vertically explore the atmosphere over typically 30 m (peak-to-peak displacements). The observed periods of oscillation, ~ 220 s in the average, are

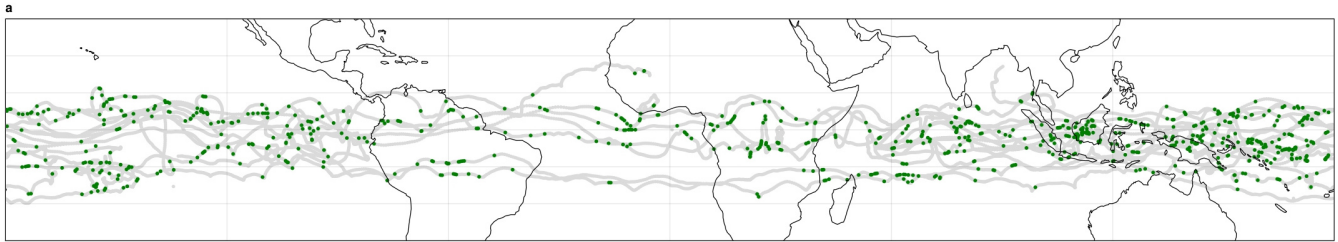


Figure 15. The positions of the turbulent patches are shown as green dots for the eight flights of the C0 campaign. Each dot corresponds to a one hour time interval. The detections are based on the Ri_{TSF} criterion. The detected turbulence episodes are far from uniform around the globe.

significantly smaller than the [Brunt-Väisälä](#) period. The large amplitude of these balloon motions at frequencies higher than the [Brunt-Väisälä](#) frequency (where turbulence is expected to occur) makes it very difficult if not impossible, to detect turbulence from the direct characterization (i.e. from the variance or power spectra) of high-frequency fluctuations. On an other hand, thanks to the vertical motions of the SPBs around their EDS, the vertical gradients of any measured quantity can be estimated, either through the covariance between the increments of this quantity and those of the vertical displacements, or equivalently through the linear fit between these two increments. For the present study, covariances and linear fits have been estimated on data segments of 1 hr, i.e. 120 data samples.

Several turbulence indices (true or false) are defined and compared. A first index is based on an inference test on the correlation between potential temperature and altitude increments. A null correlation is expected in the case of turbulent mixing, since the vertical gradient of potential temperature tends to zero. Two correlation coefficients, the Pearson and Spearman coefficients, have been tested and compared for the eight balloon flights. Alternatively, based on a linear fit between increments, vertical temperature gradients and horizontal wind can be evaluated on one-hour intervals, from which the local Richardson number can be deduced. A second turbulence index is then based on the criterion $Ri < 0.25$. These different turbulence indices compare well since they coincide for more than 97% of the cases.

SPBs sample the atmosphere without any spatial or temporal sampling bias, drifting nights and days, over oceans and continents, and above convective and non-convective regions. The fraction of time during which the flow is found to be turbulent in the lower stratosphere appears to be quite small, ranging from 3.3 to 6.6%. Because of the lack of sampling bias, such a fraction of time can be interpreted as a fraction of space. The probability of occurrence of instabilities is far from being uniform in time (or space). Periods of several days are frequently observed during which the atmosphere is stable, i.e. without any instability. On the other hand, during certain periods, the frequency of instabilities appears to be quite high. At first sight, these differences could be attributable to the underlying deep convection, as observed for example when the balloons are flying over the maritime continent. Yet, this remains very preliminary conclusions that need to be substantiated in future work.

Acknowledgements

500 The authors acknowledge the support of Agence National de la Recherche through project TuRTLES (grant agreement ANR-21-CE01-0016)

Appendix

Data availability. The balloon-borne TSEN and RACHuTS data used in this study were collected as part of Strateole-2, which is sponsored by CNES, CNRS/INSU, NSF, and ESA. The Strateole-2 data set is available at <https://data.ipsl.fr/catalog/strateole2/>.

505 6.1 Estimation of the uncorrelated noise

Appendix A: Estimation of the uncorrelated noise

The measured signal is assumed to contain an uncorrelated and centered noise contribution. This noise level is estimated on short data segments (~ 20 data samples), the useful signal being described by a polynomial fit of degree n . The time series of quantity X reads where X_i is the measured signal, and ξ_i an uncorrelated noise of variance σ_ξ . The measured first increment
510 reads: If X_i is constant, i.e. $X_{i+1} - X_i = 0$, the variance of

The measured second increment reads: If X_i varies according a linear trend, i.e $X_{i+2} - 2X_{i+1} + X_i = 0$, the variance of

The measured n -th increment reads: If X_i is described by a polynomial of degree $n - 1$, the first term on the right-hand side of Eq. (??) cancels, and the variance of

Increasing the order of differentiation enhances the relative contribution of the uncorrelated signal in the time series. After
 515 several ~~differentiation~~differentiations, the variance of the differentiated time series is expected to converge to the weighted
 variance of the uncorrelated noise.

A1 ~~Impact of instrumental noise on the correlation coefficients~~

Appendix B: Impact of instrumental noise on the correlation coefficients

The Pearson or Spearman correlation coefficients ρ_P and ρ_S will be reduced because of uncorrelated noise in the time-
 520 series of δz_B and $\delta\theta$. A simplistic model may help to illustrate this assertion. Let us note $\underline{\theta}$ the measured potential temper-
 ature and \underline{z}_B the measured altitude of the balloon. Assume that $\underline{\theta}$ can be analyzed as $\underline{\theta} = \theta + \eta$, where θ is the real value
 and η is a centered random noise. Similarly, $\underline{z}_B = z_B + \zeta$. The variance of the measured increments δX ($X = \theta$ or z_B)
 reads: ~~$[\delta X] = [\delta X] + 2\sigma_X^2$~~ $\text{Var}[\delta X] = \text{Var}[\delta X] + 2\sigma_X^2$ where σ_X is the standard deviation of the random noise on X . Also
 ~~$\text{Cov}[\delta\theta, \delta z_B] = \text{Cov}[\delta\theta, \delta z_B]$~~ $\text{Cov}[\delta\theta, \delta z_B] = \text{Cov}[\delta\theta, \delta z_B]$. The expectation of the Pearson correlation coefficient ~~$\rho_P[\delta\theta, \delta z_B] = \text{Cov}[\delta\theta, \delta z_B]$~~
 525 ~~reads:~~ $\rho_P[\delta\theta, \delta z_B] = \text{Cov}[\delta\theta, \delta z_B] / (\text{Var}[\delta\theta] \text{Var}[\delta z_B])^{1/2}$ reads:

$$\rho_P[\delta\theta, \delta z_B] = \frac{\rho_P[\delta\theta, \delta z_B]}{\left(1 + \frac{2\sigma_\zeta^2}{\text{Var}[\delta z_B]} + \frac{2\sigma_\eta^2}{\text{Var}[\delta\theta]} + \frac{4\sigma_\zeta^2\sigma_\eta^2}{\text{Var}[\delta\theta] \text{Var}[\delta z_B]}\right)^{1/2}} \quad (\text{B1})$$

where σ_θ^2 and σ_ζ^2 are the variances of the noises on θ and z_B , respectively. The correlation coefficients are thus expected to
 be significantly reduced due to the instrumental noise. Yet, they will ~~remain of~~retain the same sign ~~than as~~ the correlation
 coefficients without instrumental noise.

530 *Author contributions.* RW developed the data processing method and wrote the major part of the manuscript. CP participated in conditioning
 and processing the data. AP processed the RACHuTS data. AH is PI of Strateole-2, he pre-processed the raw data, making them available.
 AP and AH contributed importantly in exchanging extensively about the physics of super-pressure balloon borne measurements. All authors
 (RW, CP, AP, AH, MC and RP) participated in numerous discussions to elaborate and improve the overall understanding of the physics of
 measurements, and all co-authors contributed significantly to the writing of the paper.

535 *Competing interests.* The authors declare no conflicts of interest relevant to this study.

Acknowledgements. The authors acknowledge the support of Agence Nationale de la Recherche through project TuRTLES (grant agreement
 ANR-21-CE01-0016-01). Clara Pitois is funded through a Sorbonne-Universite doctoral fellowship.

References

- 540 [Corcos, M., Hertzog, A., Plougonven, R., and Podglajen, A.: Observation of Gravity Waves at the Tropical Tropopause Using Superpressure Balloons, *Journal of Geophysical Research: Atmospheres*, 126, e2021JD035165, 2021.](#)
- [Dörnbrack, A., Bechtold, P., and Schumann, U.: High-Resolution Aircraft Observations of Turbulence and Waves in the Free Atmosphere and Comparison With Global Model Predictions, *Journal of Geophysical Research: Atmospheres*, 127, e2022JD036654, <https://doi.org/https://doi.org/10.1029/2022JD036654>, 2022.](#)
- 545 [Ecklund, W. L., Gage, K. S., Nastrom, G. D., and Balsley, B. B.: A Preliminary Climatology of the Spectrum of Vertical Velocity Observed by Clear-Air Doppler Radar, *Journal of Applied Meteorology and Climatology*, 25, 885 – 892, 1986.](#)
- [Fritts, D. C., Bizon, C., Werne, J. A., and Meyer, C. K.: Layering accompanying turbulence generation due to shear instability and gravity-wave breaking, *J. Geophys. Res.*, 108\(D8\), 8452, 2003.](#)
- [Fueglistaler, S., Dessler, A. E., Dunkerton, T. J., Folkins, I., Fu, Q., and Mote, P. W.: Tropical tropopause layer, *Rev. Geophys.*, 47, 2009.](#)
- 550 [Fujiwara, M., Yamamoto, M., Hashiguchi, H., Horinouchi, T., and Fukao, S.: Turbulence at the tropopause due to breaking Kelvin waves observed by the Equatorial Atmosphere Radar, *Geophys. Res. Lett.*, 30\(4\), 1171, 2003.](#)
- [Haase, J., Alexander, M., Hertzog, A., Kalnajs, L., Davis, S., Ploufonven, R., Cocquerez, P., and Venel, S.: Around the world in 84 days, *EOS*, 99, 2018.](#)
- [Hanna, S. R. and Hoecker, W. H.: The Response of Constant-Density Balloons to Sinusoidal Variations of Vertical Wind Speeds, *Journal of Applied Meteorology and Climatology*, 10 \(3\), 601 – 604, 1971.](#)
- 555 [Hertzog, A. and Vial, F.: A study of the dynamics of the equatorial lower stratosphere by use of ultra-long-duration balloons 2. Gravity waves, *J. Geophys. Res.*, 106 \(D19\), 22,745–22,76, 2001.](#)
- [Hertzog, A., Alexander, M. J., and Plougonven, R.: On the Intermittency of Gravity Wave Momentum Flux in the Stratosphere, *Journal of the Atmospheric Sciences*, 69, 3433 – 3448, 2012.](#)
- 560 [Hotelling, H.: New Light on the Correlation Coefficient and its Transforms, *Journal of the Royal Statistical Society: Series B \(Methodological\)*, 15, 193–225, 1953.](#)
- [Kalnajs, L. E., Davis, S. M., Goetz, J. D., Deshler, T., Khaykin, S., Clair, A. S., Hertzog, A., Bordereau, J., and Lykov, A.: A reel-down instrument system for profile measurements of water vapor, temperature, clouds, and aerosol beneath constant-altitude scientific balloons, *Amos. Meas. Tech.*, 14, 2635–2648, 2021.](#)
- 565 [Luce, H., Wilson, R., Dalaudier, F., Nishi, N., Shibagaki, Y., and Nakajo, T.: Simultaneous observations or tropospheric turbulence from radiosondes using Thorpe analysis and the VHF MU radar, *Radio Science*, 49, 1106–1123, 2015.](#)
- [Mega, T., Yamamoto, M., Luce, H., Tabata, Y. ndd Hashiguchi, H., Yamamoto, M., Yamanaka, M., and Fukao, S.: Turbulence generation by Kelvin-Helmholtz instability in the tropical tropopause layer observed with a 47 MHz range imaging radar, *J. Geophys. Res.*, 115, \[doi:10.1029/2010JD013864\]\(https://doi.org/10.1029/2010JD013864\), 2010.](#)
- 570 [Muhsin, M., Sunilkumar, S., Venkat Ratnam, M., Parameswaran, K., Krishna Murthy, B., Ramkuma, G., and Rajeev, K.: Diurnal variation of atmospheric stability and turbulence during different seasons in the troposphere and lower stratosphere derived from simultaneous radiosonde observations at two tropical stations in the Indian Peninsula, *Atmospheric Research*, 180, 12–23, 2016.](#)
- [Muhsin, M., Sunilkumar, S., Ratnam, M. V., Parameswaran, K., Mohankumar, K., Mahadevan, S., Murugadass, K., Muraleedharan, P., Kumar, B. S., Nagendra, N., Emmanuel, M., Chandran, P., Koushik, N., Ramkumar, G., and Murthy, B.: "Contrasting features of](#)

- 575 [tropospheric turbulence over the Indian peninsula", Journal of Atmospheric and Solar-Terrestrial Physics, 197, 105–179, https://www.sciencedirect.com/science/article/pii/S136468261930447X, 2020.](https://www.sciencedirect.com/science/article/pii/S136468261930447X)
- [Nastrom, G. D.: The response of superpressure balloons to gravity waves, J. Applied Meteor., 19, 1013–1019, 1980.](#)
- [Podglajen, A., Hertzog, A., Plougonven, R., and Legras, B.: Lagrangian temperature and vertical velocity fluctuations due to gravity waves in the lower stratosphere, Geophysical Research Letters, 43, 3543–3553, 2016.](#)
- 580 [Podglajen, A., Bui, T., Dean-Day, J., Pfister, L., Jensen, E., Alexander, M., Hertzog, A., Kärcher, B., Plougonven, R., and Randel, W.: Small-Scale Wind Fluctuations in the Tropical Tropopause Layer from Aircraft Measurements: Occurrence, Nature, and Impact on Vertical Mixing, J. Atmos. Sci., 74, 3847–3869, DOI: 10.1175/JAS-D-17-0010.1, 2017.](#)
- [Satheesan, K. and Krishna Murthy, R.: Estimation of turbulence parameters in the lower atmosphere from MST radar observations, Quart. J. Roy. Meteor. Soc., 130, 1235–1249, 2004.](#)
- 585 [Satheesan, K. and Murthy, R. F. K.: Turbulence parameters in the tropical troposphere and lower stratosphere, J. Geophys. Res., 107 \(D1\), ACL 2 \(1–13\), 2002.](#)
- [Sen, P.: Estimates of the Regression Coefficient Based on Kendall's Tau, Journal of the American Statistical Association, 63, 1379–1389, https://www.tandfonline.com/doi/abs/10.1080/01621459.1968.10480934, 1968.](#)
- [Spearman, C.: The Proof and Measurement of Association between Two Things, the American Journal of Psychology, 15, 72–101, https://www.jstor.org/stable/1412159, 1904.](#)
- 590 [Sunilkumar, S., Muhsin, M., Parameswaran, K., Venkat Ratnam, M., Ramkumar, G., Rajeev, K., Krishna Murthy, B., Sambhu Namboodiri, K., Subrahmanyam, K., Kishore Kumar, K., and Shankar Das, S.: Characteristics of turbulence in the troposphere and lower stratosphere over the Indian Peninsula, J. Atmos. Sol-Terr. Phys., 133, 36–53, 2015.](#)
- [Thorpe, S. A.: Turbulence and mixing in a Scottish Lock, Philos. Trans. Roy. Soc. London, 286A, 125–181, 1977.](#)
- 595 [VanZandt, T. E., Nastrom, G. D., and Green, J. L.: Frequency spectra of vertical velocity from Flatland VHF radar data, Journal of Geophysical Research: Atmospheres, 96, 2845–2855, 1991.](#)
- [Vincent, R. and Hertzog, A.: The response of superpressure balloons to gravity wave motions, Atmospheric Measurement Techniques, 7 \(4\), 1043–1055, 2014.](#)
- [Werne, J. and Fritts, D. C.: Stratified shear turbulence: Evolution and statistics, Geophysical Research Letters, 26, 439–442, https://doi.org/https://doi.org/10.1029/1999GL900022, 1999.](#)
- 600 [Wilson, R., Luce, H., Dalaudier, F., and Lefrère, J.: Turbulent Patch Identification in Potential Density/Temperature Profiles, J. Atmos. Ocean. Technol., 26, 977–993, 2010.](#)
- [Wilson, R., Dalaudier, F., and Luce, H.: Can one detect small-scale turbulence from standard meteorological radiosondes?, Atmos. Meas. Tech., 4, 795–804, 2011.](#)
- 605 [Wilson, R., Luce, H., Hashiguchi, H., and Shiotani, M.: On the effect of moisture on the detection of tropospheric turbulence from in situ measurements, Atmos. Meas. Tech., 6, 697–702, 2013.](#)
- [Wilson, R., Hashiguchi, H., and Yabuki, Y.: Vertical Spectra of Temperature in the Free Troposphere at Meso-and-Small Scales According to the Flow Regime: Observations and Interpretation, Atmosphere 2018, 9, 415; doi:10.3390/atmos9110415, 2018.](#)
- [Yamamoto, M. K., Fujiwara, M., Horinouchi, T., Hashiguchi, H., and Fukao, S.: Kelvin-Helmholtz instability around the tropical tropopause observed with the Equatorial Atmosphere Radar, Geophys. Res. Lett., 30\(9\), 1476, 2003.](#)

610 References

- Corcos, M., Hertzog, A., Plougonven, R., and Podglajen, A.: Observation of Gravity Waves at the Tropical Tropopause Using Superpressure Balloons, *Journal of Geophysical Research: Atmospheres*, 126, e2021JD035 165, <https://doi.org/https://doi.org/10.1029/2021JD035165>, 2021.
- Dörnbrack, A., Bechtold, P., and Schumann, U.: High-Resolution Aircraft Observations of Turbulence and Waves in the Free Atmosphere and Comparison With Global Model Predictions, *Journal of Geophysical Research: Atmospheres*, 127, e2022JD036 654, <https://doi.org/https://doi.org/10.1029/2022JD036654>, 2022.
- Ecklund, W. L., Gage, K. S., Nastrom, G. D., and Balsley, B. B.: A Preliminary Climatology of the Spectrum of Vertical Velocity Observed by Clear-Air Doppler Radar, *Journal of Applied Meteorology and Climatology*, 25, 885 – 892, [https://doi.org/10.1175/1520-0450\(1986\)025<0885:APCOTS>2.0.CO;2](https://doi.org/10.1175/1520-0450(1986)025<0885:APCOTS>2.0.CO;2), 1986.
- 620 Fritts, D. C., Bizon, C., Werne, J. A., and Meyer, C. K.: Layering accompanying turbulence generation due to shear instability and gravity-wave breaking, *J. Geophys. Res.*, 108(D8), 8452, <https://doi.org/doi:10.1029/2002JD002406>, 2003.
- Fueglistaler, S., Dessler, A. E., Dunkerton, T. J., Folkins, I., Fu, Q., and Mote, P. W.: Tropical tropopause layer, *Rev. Geophys.*, 47, RG1004, <https://doi.org/10.1029/2008RG000267>, 2009.
- Fujiwara, M., Yamamoto, M., Hashiguchi, H., Horinouchi, T., and Fukao, S.: Turbulence at the tropopause due to breaking Kelvin waves observed by the Equatorial Atmosphere Radar, *Geophys. Res. Lett.*, 30(4), 1171, <https://doi.org/doi:10.1029/2002GL016278>, 2003.
- 625 Haase, J., Alexander, M., Hertzog, A., Kalnajs, L., Davis, S., Ploufonven, R., Cocquerez, P., and Venel, S.: Around the world in 84 days, *EOS*, 99, 2018.
- Hanna, S. R. and Hoecker, W. H.: The Response of Constant-Density Balloons to Sinusoidal Variations of Vertical Wind Speeds, *Journal of Applied Meteorology and Climatology*, 10 (3), 601 – 604, [https://doi.org/10.1175/1520-0450\(1971\)010<0601:TROCDB>2.0.CO;2](https://doi.org/10.1175/1520-0450(1971)010<0601:TROCDB>2.0.CO;2), 1971.
- 630 Hertzog, A. and Vial, F.: A study of the dynamics of the equatorial lower stratosphere by use of ultra-long-duration balloons 2. Gravity waves, *J. Geophys. Res.*, 106 (D19), 22,745–22,76, <https://doi.org/10.1175/2007JTECHA948.1>, 2001.
- Hertzog, A., Alexander, M. J., and Plougonven, R.: On the Intermittency of Gravity Wave Momentum Flux in the Stratosphere, *Journal of the Atmospheric Sciences*, 69, 3433 – 3448, <https://doi.org/10.1175/JAS-D-12-09.1>, 2012.
- Hotelling, H.: New Light on the Correlation Coefficient and its Transforms, *Journal of the Royal Statistical Society: Series B (Methodological)*, 15, 193–225, <https://doi.org/https://doi.org/10.1111/j.2517-6161.1953.tb00135.x>, 1953.
- 635 Kalnajs, L. E., Davis, S. M., Goetz, J. D., Deshler, T., Khaykin, S., Clair, A. S., Hertzog, A., Bordereau, J., and Lykov, A.: A reel-down instrument system for profile measurements of water vapor, temperature, clouds, and aerosol beneath constant-altitude scientific balloons, *Amos. Meas. Tech.*, 14, 2635–2648, <https://doi.org/10.5194/amt-14-2635-2021>, 2021.
- Luce, H., Fukao, S., Dalaudier, F., and Crochet, M.: Strong mixing events observed near the tropopause with the MU radar and high-resolution Balloon techniques, *J. Atmos. Sci.*, 59, 2885–2896, 2002.
- 640 Luce, H., Wilson, R., Dalaudier, F., Nishi, N., Shibagaki, Y., and Nakajo, T.: Simultaneous observations of tropospheric turbulence from radiosondes using Thorpe analysis and the VHF MU radar, *Radio Science*, 49, 1106–1123, <https://doi.org/doi:10.1002/2013RS005355>, 2015.
- Mega, T., Yamamoto, M., Luce, H., Tabata, Y., Hashiguchi, H., Yamamoto, M., Yamanaka, M., and Fukao, S.: Turbulence generation by Kelvin-Helmholtz instability in the tropical tropopause layer observed with a 47 MHz range imaging radar, *J. Geophys. Res.*, 115, [doi:10.1029/2010JD013864](https://doi.org/doi:10.1029/2010JD013864), 2010.

- Muhsin, M., Sunilkumar, S., Venkat Ratnam, M., Parameswaran, K., Krishna Murthy, B., Ramkuma, G., and Rajeev, K.: Diurnal variation of atmospheric stability and turbulence during different seasons in the troposphere and lower stratosphere derived from simultaneous radiosonde observations at two tropical stations in the Indian Peninsula, *Atmospheric Research*, 180, 12–23, <https://doi.org/10.1016/j.atmosres.2016.04.021>, 2016.
- 650 Muhsin, M., Sunilkumar, S., Ratnam, M. V., Parameswaran, K., Mohankumar, K., Mahadevan, S., Murugadass, K., Muraleedharan, P., Kumar, B. S., Nagendra, N., Emmanuel, M., Chandran, P., Koushik, N., Ramkumar, G., and Murthy, B.: "Contrasting features of tropospheric turbulence over the Indian peninsula", *Journal of Atmospheric and Solar-Terrestrial Physics*, 197, 105–179, <https://doi.org/https://doi.org/10.1016/j.jastp.2019.105179>, 2020.
- 655 Nastrom, G. D.: The response of superpressure balloons to gravity waves, *J. Applied Meteor.*, 19, 1013–1019, 1980.
- Podglajen, A., Hertzog, A., Plougonven, R., and Legras, B.: Lagrangian temperature and vertical velocity fluctuations due to gravity waves in the lower stratosphere, *Geophysical Research Letters*, 43, 3543–3553, <https://doi.org/https://doi.org/10.1002/2016GL068148>, 2016.
- Podglajen, A., Bui, T., Dean-Day, J., Pfister, L., Jensen, E., Alexander, M., Hertzog, A., Kärcher, B., Plougonven, R., and Randel, W.: Small-Scale Wind Fluctuations in the Tropical Tropopause Layer from Aircraft Measurements: Occurrence, Nature, and Impact on Vertical
- 660 Mixing, *J. Atmos. Sci.*, 74, 3847–3869, DOI: 10.1175/JAS-D-17-0010.1, 2017.
- Satheesan, K. and Krishna Murthy, R.: Estimation of turbulence parameters in the lower atmosphere from MST radar observations, *Quart. J. Roy. Meteor. Soc.*, 130, 1235–1249, 2004.
- Satheesan, K. and Murthy, R. F. K.: Turbulence parameters in the tropical troposphere and lower stratosphere, *J. Geophys. Res.*, 107 (D1), ACL 2 (1–13), 2002.
- 665 Sen, P.: Estimates of the Regression Coefficient Based on Kendall's Tau, *Journal of the American Statistical Association*, 63, 1379–1389, <https://doi.org/10.1080/01621459.1968.10480934>, 1968.
- Spearman, C.: The Proof and Measurement of Association between Two Things, *he American Journal of Psychology*, 15, 72–101, <https://www.jstor.org/stable/1412159>, 1904.
- Sunilkumar, S., Muhsin, M., Parameswaran, K., Venkat Ratnam, M., Ramkumar, G., Rajeev, K., Krishna Murthy, B., Sambhu Nambodiri,
- 670 K., Subrahmanyam, K., Kishore Kumar, K., and Shankar Das, S.: Characteristics of turbulence in the troposphere and lower stratosphere over the Indian Peninsula, *J. Atmos. Sol-Terr. Phys.*, 133, 36–53, <https://doi.org/10.1016/j.jastp.2015.07.015>, 2015.
- Thorpe, S. A.: Turbulence and mixing in a Scottish Lock, *Philos. Trans. Roy. Soc. London*, 286A, 125–181, 1977.
- VanZandt, T. E., Nastrom, G. D., and Green, J. L.: Frequency spectra of vertical velocity from Flatland VHF radar data, *Journal of Geophysical Research: Atmospheres*, 96, 2845–2855, <https://doi.org/https://doi.org/10.1029/90JD02220>, 1991.
- 675 Vincent, R. and Hertzog, A.: The response of superpressure balloons to gravity wave motions, *Atmospheric Measurement Techniques*, 7 (4), 1043–1055, <https://doi.org/10.5194/amt-7-1043-2014>, 2014.
- Werne, J. and Fritts, D. C.: Stratified shear turbulence: Evolution and statistics, *Geophysical Research Letters*, 26, 439–442, <https://doi.org/https://doi.org/10.1029/1999GL900022>, 1999.
- Wilson, R., Luce, H., Dalaudier, F., and Lefrère, J.: Turbulent Patch Identification in Potential Density/Temperature Profiles, *J. Atmos. Ocean.*
- 680 *Technol.*, 26, 977–993, 2010.
- Wilson, R., Dalaudier, F., and Luce, H.: Can one detect small-scale turbulence from standard meteorological radiosondes?, *Atmos. Meas. Tech.*, 4, 795–804, <https://doi.org/doi:10.5194/amt-4-795-2011>, 2011.
- Wilson, R., Luce, H., Hashiguchi, H., and Shiotani, M.: On the effect of moisture on the detection of tropospheric turbulence from in situ measurements, *Atmos. Meas. Tech.*, 6, 697–702, <https://doi.org/doi:10.5194/amt-6-697-2013>, 2013.

- 685 Wilson, R., Hashiguchi, H., and Yabuki, Y.: Vertical Spectra of Temperature in the Free Troposphere at Meso-and-Small Scales According to the Flow Regime: Observations and Interpretation, *Atmosphere* 2018, 9, 415; doi:10.3390/atmos9110415, 2018.
- Yamamoto, M. K., Fujiwara, M., Horinouchi, T., Hashiguchi, H., and Fukao, S.: Kelvin-Helmholtz instability around the tropical tropopause observed with the Equatorial Atmosphere Radar, *Geophys. Res. Lett.*, 30(9), 1476, <https://doi.org/doi:10.1029/2002GL016685>, 2003.