

Raindrop Size Distribution (DSD) during the Passage of a Tropical Cyclone NIVAR: Effect of Measuring Principle and Wind on DSDs and Retrieved Rain Integral and Polarimetric Parameters from Impact and Laser Disdrometers

Basivi Radhakrishna

National Atmospheric Research Laboratory, Department of Space, Govt. of India, Gadanki - 517112, Andhra Pradesh, India.

Correspondence: Basivi Radhakrishna (rakibasivi@gmail.com)

Abstract. Raindrop size distribution (DSD) observations during the passage of landfalling tropical cyclone NIVAR by impact (JWD) and laser (LPM and PARSIVEL) disdrometers are used to unveil the DSD characteristics in the eyewall, inner, and outer rainbands. Disdrometer measurements collected at the same location are used to study the effect of wind, measuring principle, and hardware processing on the DSDs and, in turn, on estimated rain integral and polarimetric parameters. The concentration of raindrops of diameters between 0.7 mm to 1.5 mm increases with rain rate (R) in all the regions of NIVAR, while the magnitude of the increase is high in the eyewall than in the inner and outer rainbands. The DSD characteristics reveal that for a given R, relatively large reflectivity (Z) and mass-weighted mean diameter (D_m) are found in the outer rainband and small Z, and D_m in the eyewall than in other regions of a TC. Raindrops of diameter 3-mm in size are observed frequently in inner and outer rainbands, while infrequent in the eyewall at R greater than 5 mm h^{-1} . The DSDs and estimated rain integral and polarimetric parameters are distinctly different for various disdrometers at similar environmental conditions. Raindrops greater than 3 mm in size are infrequent in the JWD recordings while frequent in the LPM and PARSIVEL indicating LPM and PARSIVEL overestimates the raindrop size when the fall path deviates from nadir due to horizontal wind. The wind effect on the recorded DSD and estimated rain integral and polarimetric parameters are not uniform in various regions of NIVAR for different disdrometers as the measuring principle and hardware processing further influence these effects. Along with the differences in measured DSD spectra, the resonance effects at X-band for raindrops greater than 3-mm cause variations in the estimated polarimetric parameters between the disdrometers.

1 Introduction

Tropical cyclones (TCs) are destructive atmospheric phenomena associated with extremely high winds and ample rainfall, which cause severe damage to human life and the economy. The advancements made in recent years noticeably improved the numerical weather prediction (NWP) models that forecast of TCs genesis and tracks (Hendricks et al., 2011); however, intensity predictions are still to be improved (DeMaria et al., 2014). All scales (micro-scale to synoptic) of forcings influence the intensity fluctuations of a TC (Molinari and Vollaro, 1989; Bosart et al., 2000; Hanley et al., 2001); however, small-scale,

transient, moist convective processes and resultant latent heating play a major role in different regions (McFarquhar et al., 2006). Convective processes and resulting rainfall in a TC are primarily governed by the evolution of the microphysics of a TC
25 (Khain et al., 2016). The microphysical process information is obtained by studying the raindrop size distribution (DSD). DSD is the raindrop concentration per drop size per unit volume. Spatiotemporal variations of DSD at various scales in different rain types are essential for disclosing the fundamental precipitation microphysical processes, including collision–coalescence, breakup, and evaporation (Rosenfeld and Ulbrich, 2003; Radhakrishna et al., 2020). Considering the vast application of DSD, it is one of the prime measurements required in the fields of remote sensing and numerical weather prediction. The differences
30 in dynamical and microphysical processes from eyewall to inner rainbands to outer rainbands (Houze, 2010) cause changes in the DSD observed at the surface (Merceret, 1974; Homeyer et al., 2021). This shows the importance of DSD in various regions of a TC to better represent the microphysics in NWP models for improving the intensity predictions (Fierro and Mansell, 2017; Wang et al., 2020).

DSD varies in different regions of a TC (Merceret, 1974; Homeyer et al., 2021), seasonally, and from noncyclonic rain (Rad-
35 hakrishna and Rao, 2010). Mass-weighted mean diameter (D_m) comparisons over Pacific (Chen et al., 2012), Atlantic (Tokay et al., 2008), and Bay of Bengal (Radhakrishna and Rao, 2010) basins show the largest D_m values over the Bay of Bengal and smallest D_m values over the Pacific than other basins. The studies mentioned above used different disdrometers (impact, video, and laser-based) to measure the DSD at the surface. The laser-based particle size velocity (PARSIVEL) disdrometer underestimates small raindrops (Tokay et al., 2014; Thurai et al., 2017; Wen et al., 2018) compared to a two-dimensional video
40 disdrometer (2DVD). These differences in DSDs are due to variations in measuring principles of drop diameter by various disdrometers. The Joss-Waldvogel disdrometer (JWD) measures the drop size by measuring the impact of falling raindrops on a pressure sensor converted into an electric signal (Joss and Waldvogel, 1967). Laser precipitation monitor (LPM) and PARSIVEL disdrometers measure drop size by accounting for the variations in the intensity of laser beam between emitter and receiver (Illingworth and Stevens, 1987; Löffler-Mang and Joss, 2000). Two orthogonal line scan camera images of 2DVD
45 provide raindrop size, shape, and velocity (Kruger and Krajewski, 2002). Each principle and hardware processing have its advantages and disadvantages, leading to errors and uncertainties in the measured DSD spectrum. 2DVD is considered the most reliable in measuring DSDs accurately (Raupach and Berne, 2015; Thurai et al., 2017); however, further works by Thurai and Bringi (2018), and Raupach et al. (2019) showed that these disdrometers underestimate small raindrops considerably.

The disdrometer evaluation experiment (DEVEX) showed a good agreement between PARSIVEL, 2DVD, and a dual-beam
50 spectropluviometer (Krajewski et al., 2006). However, PARSIVEL measured more number of smaller drops and higher rainfall rates than the other two. Considering DSDs from TCs and organized mesoscale convective systems, Thurai et al. (2011) showed that PARSIVEL and 2DVD show good agreement till 20 mm h^{-1} , while PARSIVEL overestimates 20%-30% at higher rainfall rates. Krajewski et al. (2006) attributed these differences to instruments' background noise, condensation of water vapor on the lenses, splashes, and margin fallers. Tokay et al. (2014) compared JWD and PARSIVEL and showed good agreement in
55 the DSD spectra above 0.5 mm diameter. Angulo-Martínez et al. (2018) and Guyot et al. (2019) found the recording of more number of smaller drops by LPM than PARSIVEL, and these errors are amplified with increasing rain intensity. Errors in DSD measurements are affected by instrument principle and associated hardware and external environmental conditions like wind

speed and direction (Friedrich et al., 2013; Capozzi et al., 2021). Strong wind conditions create turbulence along the walls of 2DVD, deflecting the small drop path, resulting in more intersects leading to an excess of smaller drops (Nešpor et al., 2000).
 60 To study the wind speed and direction effects on laser disdrometer, Friedrich et al. (2013) used articulating and stationary disdrometers and found marginal variations for small drops (< 2 mm). However, the articulating disdrometer recorded higher concentrations of large (> 5 mm; $200\text{--}500\text{ m}^{-3}\text{ mm}^{-1}$) and medium-sized ($2\text{--}5$ mm; $500\text{--}3000\text{ m}^{-3}\text{ mm}^{-1}$) drops compared to the stationary disdrometer.

Disdrometers are used as ground truth to validate the radar geophysical parameters. The artefacts and instrument errors associated with various kinds of disdrometers mentioned above need to be quantified as they propagate to the retrievals of radar geophysical parameters (Adirosi et al., 2018) and, in turn, in surface rainfall from weather radars (both polarimetric and non-polarimetric). Mitigating these errors is crucial for representing the microphysics in the NWP models correctly. Thus, considering all these artifacts and errors, the present study is aimed to study the differences in DSDs observed by JWD, PARSIVEL, and LPM in different regions of a landfalling very severe cyclonic storm NIVAR originated over the Bay of Bengal. Also, this study assesses the effect of horizontal wind speed on DSDs observed by impact and laser disdrometers and the retrieved rain integral and polarimetric parameters.
 70

2 Disdrometers data processing

2.1. Joss-Waldvogel disdrometer

JWD is an impact-type disdrometer that measures raindrops primarily into 127 diameter classes, hitting a surface area of 50 cm^2 with an accuracy of 95% in a 1-minute time interval (Joss and Waldvogel, 1967). These 127 classes are further combined into 20 intervals, distributed more or less exponentially, measuring raindrops from 0.3 mm to 5.3 mm. JWD classifies the DSD in each diameter interval is estimated from the 1-minute JWD observations as follows:

$$N(D_i) = \frac{10^6 * n_i}{F * t * v(D_i) * \Delta D_i} \text{ (m}^{-3}\text{ mm}^{-1}\text{)} \quad (1)$$

Where i stands for the diameter interval number, $N(D_i)$ is the number of drops per unit volume per unit diameter interval, F is the measuring area (5000 mm^2), t is the sampling time (60 s), n_i is the number of drops in the i^{th} class interval, D_i is the i^{th} class equivolume diameter (mm), $v(D_i)$ is the fall velocity of the drop with diameter D_i (m s^{-1}), and ΔD_i is the i^{th} class drop interval (mm).
 80

2.2. Thesis Clima laser precipitation monitor

Thesis Clima LPM uses a 228 mm length, 20 mm width, and 0.75 mm thickness laser beam of wavelength 780 nm with a resulting sampling area of 45.6 cm^2 (Illingworth and Stevens, 1987). However, the manufacturer will provide the information of slight variations in the dimensions of the laser beam for each disdrometer separately using a parameter called $\text{AU}_{parameter}$. Hence, the measuring area is device-specific for LPM and is estimated using the following equation.

$$F_{LPM} = \frac{4600 * 1000}{AU_{parameter}} (mm^2) \quad (2)$$

For the LPM used in this study, the $AU_{parameter}$ is 916 resulting in a sampling area of 50.218 cm². LPM measures raindrops
 90 between 0.18 mm and 8 mm in 22 different diameter intervals with 20 fall velocity intervals ranging from 0.1 m s⁻¹ to 10.5
 m s⁻¹. LPM records data at a 1-minute resolution. The drops falling on the edges of the laser beam effectively reduce the
 sampling area of the LPM depending on the diameter of the drop (Löffler-Mang and Joss, 2000). The effective sampling area
 is given by

$$F_{LPM}^i = F_{LPM} * \frac{20 - D_i}{20} (mm^2) \quad (3)$$

95 The drop size distribution is estimated as follows:

$$N(D_i) = \frac{10^6}{t} * \sum_{j=1}^{20} \frac{n_{i,j}}{v_L(j) * D_i * F_{LPM}^i} (m^{-3} mm^{-1}) \quad (4)$$

Where $n_{i,j}$ is the number of drops recorded by LPM in i^{th} diameter and j^{th} velocity interval, $v_L(j)$ is the fall velocity of
 raindrop with diameter D_i (m s⁻¹) measured by the LPM.

2.3. OTT PARSIVEL disdrometer

100 The second-generation PARSIVEL disdrometer manufactured by OTT Hydromet Inc consists of a 780 nm laser beam with
 dimensions of 180 mm length, 30 mm width, and 1 mm thickness providing a sampling area of 54 cm² (Löffler-Mang and
 Joss, 2000). PARSIVEL records raindrops in the range of 0.1 mm and 24.5 mm in 32 diameter and 32 velocity intervals
 (ranges between 0.05 and 20.8 m s⁻¹). PARSIVEL is also showing margin fallers; the effective sampling area and N(D) are
 calculated using the following relations.

$$105 \quad F_{PARSIVEL}^i = 180 * (30 - 0.5 * D_i) (mm^2) \quad (5)$$

$$N(D_i) = \frac{10^6}{t} * \sum_{j=1}^{32} \frac{n_{i,j}}{v_P(j) * D_i * F_{PARSIVEL}^i} (m^{-3} mm^{-1}) \quad (6)$$

Where $v_P(j)$ is the fall velocity of raindrop with diameter D_i (m s⁻¹) measured by the PARSIVEL. The processing done
 by the manufacturer of disdrometer converts the electrical signals into number of drops in each drop diameter interval. After
 110 obtaining the number of drops information in each diameter interval, equations (1) to (6) are used to estimated N(D) from the
 respective disdrometer.

2.4. Rain integral and polarimetric parameters

In open fields, JWD and LPM are installed 10 m apart (13.4608°N, 79.1733°E) while PARSIVEL is 500 m away from both in the southeast direction (13.4565°N, 79.1758°E). During the passage of NIVAR, JWD and PARSIVEL observations are available throughout the event, while LPM observations are available after 1415 IST on 25th November 2020. The disdrometer data are quality checked before estimating the rain integral and polarimetric parameters. The 1-minute data recordings are considered only when they show drop measurements in more than five diameter class intervals and the number of drops measured is greater than 50. This threshold condition removes the spurious values from the disdrometer recordings caused by non-precipitating targets (Radhakrishna and Rao, 2010). The splashing and margin filler effects are removed using velocity thresholds used in Jaffrain and Berne (2011), and Friedrich et al. (2013) for the laser disdrometers. The quality-controlled data are used to estimate the N(D) using (1), (4), and (6). The estimated N(D) is used to calculate rain rate (R), reflectivity (Z) assuming Rayleigh approximation, D_m , and normalized intercept parameter (N_w) using the following relations.

$$R = 3.6 * 10^{-3} * \frac{\pi}{6} * \sum_i [N(D_i) * D_i^3 * v(D_i) * \Delta D_i] \text{ (mm h}^{-1}\text{)} \quad (7)$$

$$Z = \sum_i [N(D_i) * D_i^6 * \Delta D_i] \text{ (mm}^6 \text{ m}^{-3}\text{)} \quad (8)$$

$$D_m = \frac{\sum_i [N(D_i) * D_i^4 * \Delta D_i]}{\sum_i [N(D_i) * D_i^3 * \Delta D_i]} \text{ (mm)} \quad (9)$$

$$N_w = \frac{4^4 * \sum_i [N(D_i) * D_i^3 * \Delta D_i]}{6 * D_m^4} \text{ (m}^{-3} \text{ mm}^{-1}\text{)} \quad (10)$$

The polarimetric parameters are estimated using scattering amplitudes from the T-matrix simulations (Mishchenko et al., 1996) at S- (2.8 GHz), C- (5.6 GHz), and X-band (9.3369 GHz, the frequency of X-band radar operating at Gadanki) frequencies. The scattering simulations are performed in the temperature ranges from 5 °C to 30 °C using the refractive index of raindrops estimated from Ray (1972) and the drop axis ratio relation from Brandes et al. (2002). The polarimetric radar parameters reflectivity in horizontal (Z_H) and vertical (Z_V) polarizations, differential reflectivity (Z_{DR}), specific differential phase (K_{DP}), the co-polar correlation coefficient between horizontal and vertical polarizations (ρ_{HV}), two-way specific differential attenuation (A_{DP}) and specific attenuation at horizontal polarization (A_H) are estimated using back-scattering (S_{HH} , S_{VV}) and forward scattering (F_{HH} , F_{VV}) amplitudes (in mm).

$$Z_{H,V} = \frac{4 * \lambda^4}{\pi^4 * |K^2|} * \sum_i [N(D_i) * |S_{HH,VV}^i|^2 * \Delta D_i] \text{ (mm}^6 \text{ m}^{-3}\text{)} \quad (11)$$

$$140 \quad Z_{DR} = 10 * \log_{10} \left(\frac{Z_H}{Z_V} \right) \quad (dB) \quad (12)$$

$$K_{DP} = \frac{180 * \lambda * 10^{-3}}{\pi} * \sum_i [N(D_i) * Re(F_{HH}^i - F_{VV}^i) * \Delta D_i] \quad (^\circ km^{-1}) \quad (13)$$

$$A_{DP} = 8.686 * \lambda * 10^{-3} * \sum_i [N(D_i) * Im(F_{HH}^i - F_{VV}^i) * \Delta D_i] \quad (dB km^{-1}) \quad (14)$$

145

$$A_{H,V} = 8.686 * \lambda * 10^{-3} * \sum_i [N(D_i) * Im(F_{HH,VV}^i) * \Delta D_i] \quad (dB km^{-1}) \quad (15)$$

$$\rho_{HV} = \left| \frac{\sum_i [N(D_i) * S_{VV}^i S_{HH}^{ic} * \Delta D_i]}{\{\sum_i [N(D_i) * S_{HH}^i S_{HH}^{ic} * \Delta D_i]\}^{1/2} * \{\sum_i [N(D_i) * S_{VV}^i S_{VV}^{ic} * \Delta D_i]\}^{1/2}} \right| \quad (16)$$

Where i stands for diameter interval, c on superscript indicates the complex conjugate, λ is the wavelength (mm) considered, and K is the complex refractive index whose real part denotes the phase speed, and imaginary part indicates the extinction. K_{DP} is immune to attenuation and is widely used to correct the attenuation using $K_{DP} - A_H$ and $K_{DP} - A_{DP}$ relations which is the advantage of polarimetric when compared to conventional weather radars (Bringi et al., 1990; Jameson, 1991; Park et al., 2005). The studies by Bringi et al. (1990) and Jameson (1991) showed that K_{DP} , A_H , and A_{DP} are related linearly, while Park et al. (2005) showed a power-law relation. As the powers are ~ 1 over the Gadanki region (Rao et al., 2018), linear relations of K_{DP} , A_H , and A_{DP} are considered following Bringi et al. (1990) and are given below.

$$A_{DP} = \gamma_{DP} * K_{DP} \quad (17)$$

$$A_H = \gamma_H * K_{DP} \quad (18)$$

γ_{DP} is the differential attenuation coefficient, γ_H is the attenuation coefficient, and both depend on the DSD characteristics, temperature, and drop shape. As A_{DP} and A_H are in $dB km^{-1}$, both γ_{DP} and γ_H are expressed in dB per degree.

3 DSD measurements during the NIVAR cyclone

On 21st November 2020, a low-pressure area is formed over the equatorial Indian Ocean and adjoining central parts of the South Bay of Bengal. It concentrated into a depression over southwest and adjoining southeast Bay of Bengal on 0230 IST

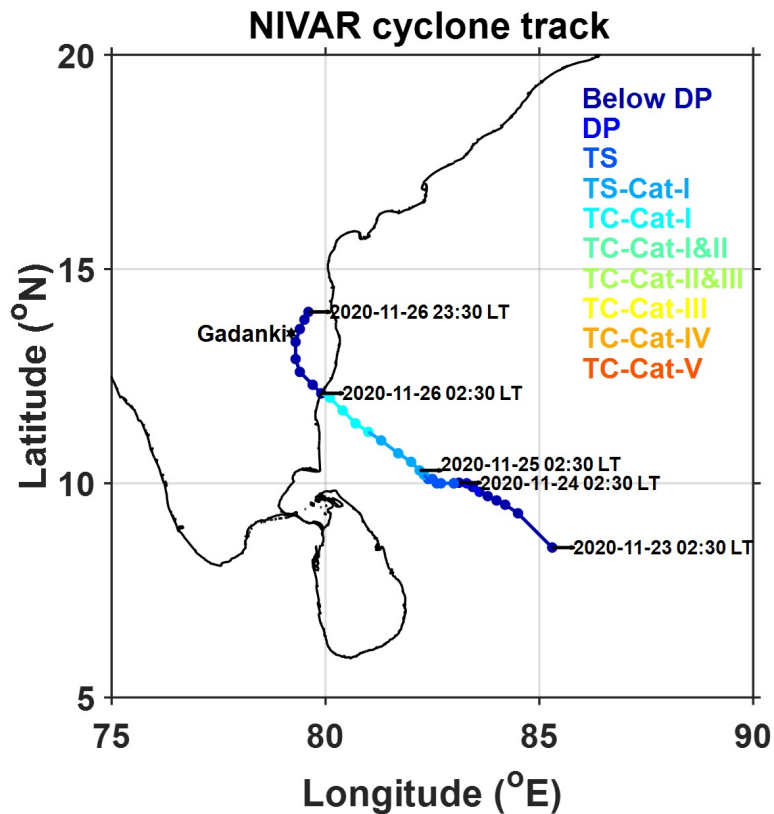


Figure 1. Track and category of NIVAR cyclone formed over the Bay of Bengal is shown with a time interval of 3 h. The cyclone categories are based on the Dvorak classification. The black star indicates the location of Gadanki where disdrometers are installed.

on 23rd and moved west-northwestwards, and intensified into a deep depression in the evening of the same day. It is further
 165 intensified into a cyclonic storm 'NIVAR' over southwest Bay of Bengal at 0530 IST on 24th. It moved in the same direction
 and intensified into a severe cyclonic storm at midnight (2330 IST) on the 24th and into a very severe cyclonic storm in the
 afternoon (1430 IST) on the 25th. Moving further northwestwards, NIVAR made landfall at 2330 IST on 25th at 12.1°N and
 79.9°E near Puducherry as a very severe cyclonic storm with a wind speed of 120 kmph. After landfall, it moved further
 northwestwards and weakened into a severe cyclonic storm at 0230 IST on 26th and further weakened into a cyclonic storm
 170 in the morning hours (0830 IST) of the same day. It weakened into a deep depression and recurved its path towards north-
 northeastwards in the afternoon hours (1430 IST) over the south of Andhra Pradesh and further into a depression in the same
 midnight (2330 IST) over south coastal Andhra Pradesh. The observed track (Knapp et al., 2010) and intensity based on Dvorak
 classification (Dvorak, 1984) of NIVAR during 22nd and 26th November 2020 are shown in Fig. 1. NIVAR produced 130 mm
 of rainfall at Gadanki (13.5°N and 79.2°E) on 25th and 26th, where the disdrometers observations were made. NIVAR passed
 175 near Gadanki in the deep depression stage between 1430 and 1730 IST on the 26th.

A TC consists of a rain-free eye surrounded by a quasi-circular precipitation ring called an eyewall (< 75 km in radius) and spiral rainbands (Cecil et al., 2002). The spiral rainbands are further classified into inner (between 75 and 150 km) and outer (> 150 km) rainbands (Cecil et al., 2002). These regions are noted with concentric circles on the integrated multi-satellite retrievals for GPM (IMERG) final run V06B 30-minute rainfall (Huffman et al., 2020) spatial maps during 25th and 26th November 2020 (Fig. 2). Also shown in Fig. 2 are the NIVAR eye location indicated with a dot symbol and the Gadanki location with a star symbol. Over Gadanki region, NIVAR eyewall is produced rainfall during 1300 IST and 1600 IST on 26th, inner rainband between 0300 IST and 1300 IST, and after 1600 IST on 26th, and outer rainband during 25th and up to 0300 IST on 26th. At Gadanki, tipping bucket rain gauge measurements show that the amount of rainfall produced by the NIVAR eyewall is 21 mm, the inner rainband is 83 mm, and the outer rainband is 26 mm.

The temporal variation of rain integral parameters (R , Z , and D_m) estimated from JWD, PARSIVEL, and LPM during the passage of NIVAR is shown in Fig. 3. The time series of R , Z , and D_m shows a maximum of 38 mm h^{-1} , 44 dBZ, and 2 mm (except at once instant by LPM, which shows 2.5 mm), respectively. NIVAR's intensity and reflectivity observations are similar to the TC NISHA (formed during 24th and 28th November 2008 over the Bay of Bengal) observations at Gadanki (Radhakrishna and Rao, 2010). The D_m observed during NIVAR is similar to the D_m reported in cyclones elsewhere (Tokay et al., 2008; Wen et al., 2018) and in India (Radhakrishna and Rao, 2010). The rainfall observed during the passage of the outer rainband is mostly stratiform (rarely $R \geq 10 \text{ mm h}^{-1}$), while in inner rainband and eyewall are both convective and stratiform in nature. The horizontal wind at 8 m height shows maximum speeds during the inner rainband and eyewall passage. The three disdrometers observed similar variations in rain integral parameters with time while showing differences in magnitudes due to variations in the measuring principle and hardware processing. The time series of 1-minute $N(D)$ is plotted in Fig. 4 to investigate the differences in DSD observed by the three disdrometers. Irrespective of rain intensity, JWD rarely recorded raindrops greater than 3 mm, whereas LPM and PARSIVEL measurements showed raindrops up to 4 mm. The drops observed in the first few channels (< 0.7 mm) are relatively higher in LPM than in JWD and PARSIVEL. The overestimation of the number of drops by LPM is also noticed at other geophysical locations (Europe) by Angulo-Martínez et al. (2018) compared to PARSIVEL. As explained in Angulo-Martínez et al. (2018), although the measuring principle is the same for LPM and PARSIVEL, the differences seen in the DSD spectra could be due to differences in the laser beam dimensions that can count the splashes and margin fallers. However, the corrections done using theoretical fall velocity and sampling area removes these effects to a greater extent. Thus, the differences caused in the DSD spectra measured by the LPM and PARSIVEL could be due to variations in the hardware processing, which are undisclosed by the manufacturers.

The DSD differences observed between JWD, LPM, and PARSIVEL and their effect on rain integral parameters in different regions of NIVAR are studied using the variations of D_m , N_w , and Z with R . The slope and intercept of D_m - R curves estimated from JWD (red color), PARSIVEL (green color), and LPM (blue color) in the eyewall, inner, and outer rainband regions are shown in Fig. 5(a)-(c). For a given R , three disdrometers D_m show comparatively largest values in the outer rainband, and larger values in the inner rainband than in the eyewall region. The three disdrometers D_m increase with increasing R , while the magnitude of increase (slope) is different from each other. At a given R , the D_m estimated from PARSIVEL is smaller, and JWD is larger than the other two disdrometers in all the regions of NIVAR. The DSD spectrum shape varies with R so that to make the

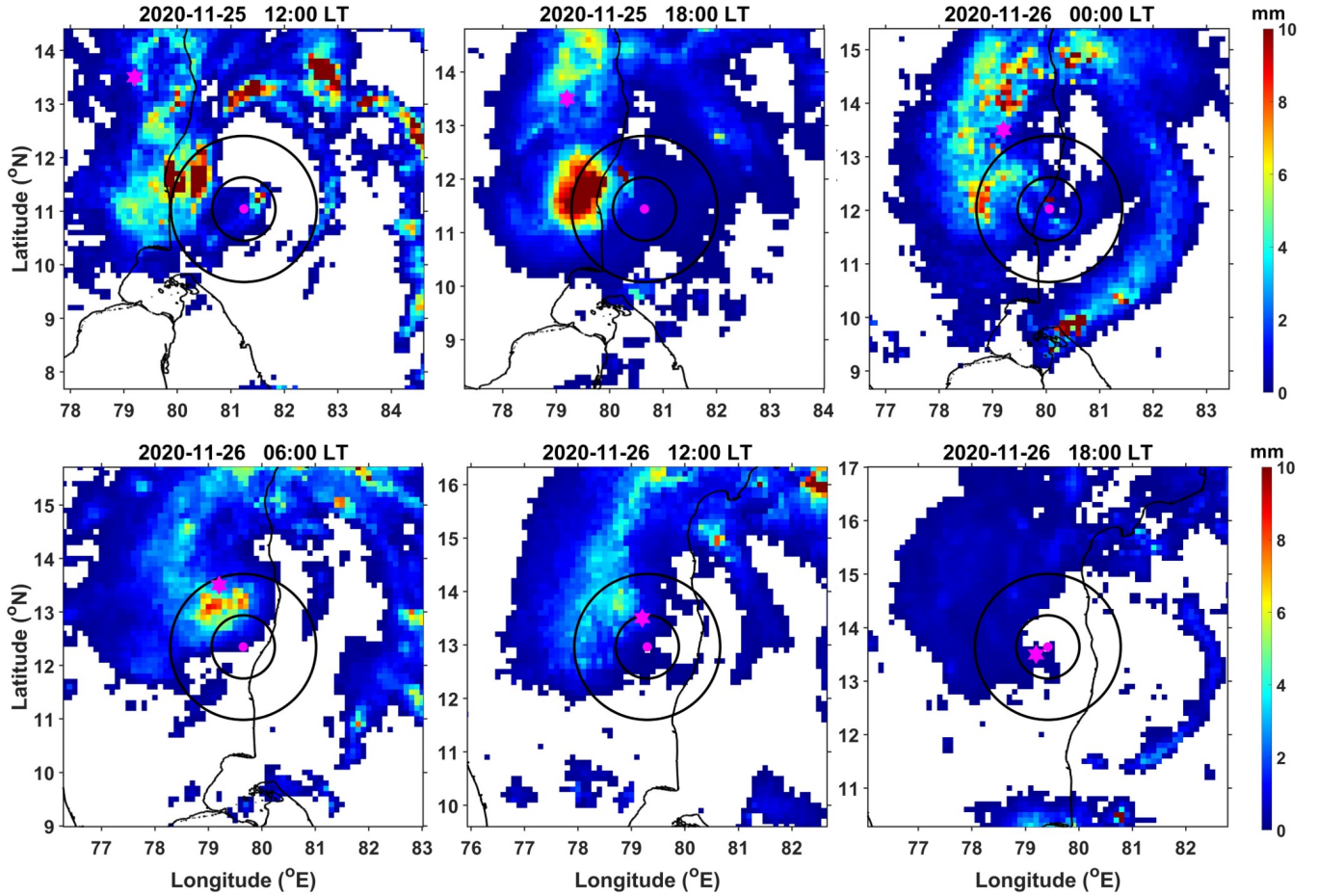


Figure 2. IMERG 30 minutes accumulated rainfall (in mm) maps of NIVAR cyclone with the eye (Pink closed circle), eyewall (75 km), and inner rainband (150 km) boundaries. The pink hexagon indicates the location of Gadanki, and the inner black solid circle show the eyewall/inner rainband and outer black solid circle indicate the inner/outer rainband boundaries.

spectra independent of shape, N_w is considered following Testud et al. (2001). The variation of $10 * \log_{10} N_w$ (in dB where N_w is in $\text{mm}^{-1} \text{m}^{-3}$) with R in the three regions of NIVAR is depicted in Figs. 5(d)-(f). N_w shows an increase with R in the outer rainband region for all disdrometers. In the eyewall region, JWD shows a decrease in N_w with R (negative slope), where LPM and PARSIVEL show an increase (positive slope). During the passage of the inner rainband, JWD shows an increase in N_w with R (positive slope), while LPM and PARSIVEL show a decrease (negative slopes). N_w -R curves show larger intercept values in the eyewall region and smaller values in the outer rainband region than in other regions. Nonetheless, the slope values vary for different regions and disdrometers. The discrepancy in the slopes of the N_w -R curves between the disdrometer in the eyewall and inner rainband needs to be further validated with more data before interpreting microphysically. Conventional weather radars use Z-R relations ($Z=A*R^b$, where A and b are empirical constants) for the quantitative precipitation estimation. The

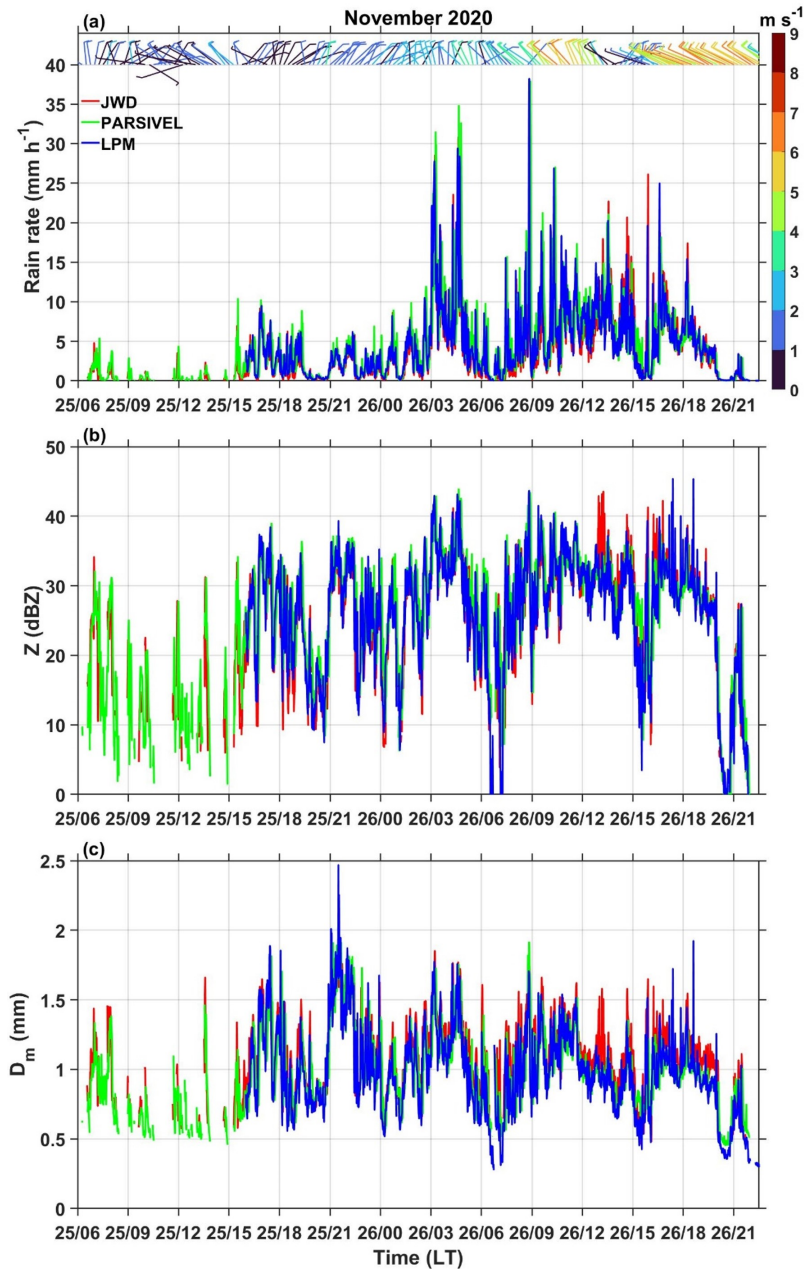


Figure 3. (a) Rain rate (R in mm h^{-1}), (b) reflectivity (Z in dBZ), and (c) mass-weighted mean diameter (D_m in mm) observed by three kinds of disdrometers (JWD, PARSIVEL, and LPM) with a temporal resolution of 1 minute during the passage of NIVAR cyclone over Gadanki region. The wind barbs shown in (a) are the 5-min averaged wind vectors at 8 m height, whose magnitudes are indicated with the colors mentioned in the color bar.

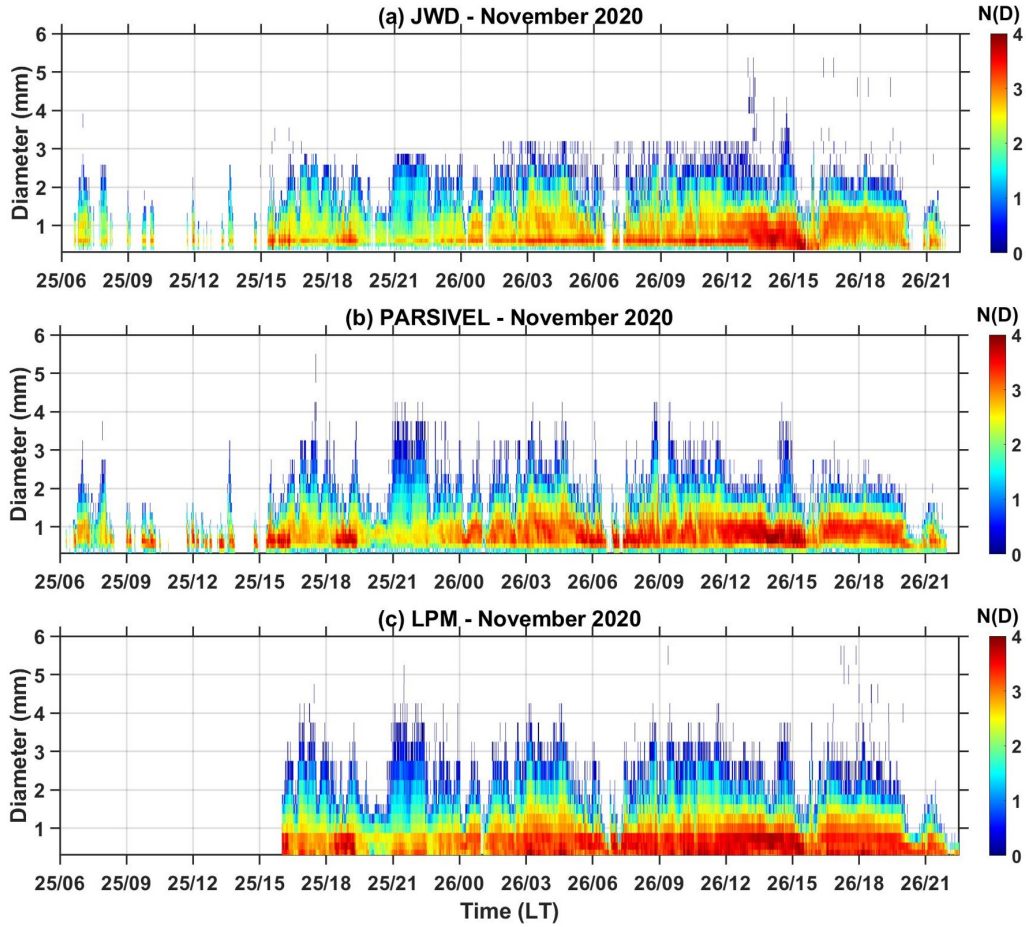


Figure 4. Time series of 1-minute $N(D)$ in $\text{mm}^{-1} \text{m}^{-3}$ observed by three kinds of disdrometers (JWD, PARSIVEL, and LPM) during the passage of NIVAR cyclone over Gadanki region. The colorbar indicates $\log_{10} N(D)$.

220 Z-R relations are estimated using linear fit in log space and converted into power law forms for different disdrometers in various
 regions of a TC are depicted in Fig. 5(g)-(i). Both empirical constants vary considerably between eyewall and other regions,
 suggesting that these regions' Z-R relations are distinctly different. The empirical coefficients vary from one disdrometer
 to another except for laser disdrometers in the outer rainband region. Comparing A and b values of the Z-R relations for a
 particular rain type in different regions provides information on precipitation microphysics. In particular, the coefficient A
 225 gives the size of raindrops, i.e., larger A for larger raindrops, and the power b provides the microphysical processes. The size or
 mixed controlled cases where collision-coalescence dominates the b value is greater than one and for number-controlled case
 (collision, coalescence, and breakup) that produces equilibrium DSD b value is ~ 1 (Atlas et al., 1999; Rosenfeld and Ulbrich,
 2003). The smaller A value of LPM than PARSIVEL and JWD in all the regions indicates the overestimation of smaller drops by
 LPM. The retrieved b value is greater than one by all disdrometers in all the regions, suggesting the dominance of the collision-

230 coalescence process. The Z-R relations obtained over the Atlantic basin during hurricane Anita (eyewall: $Z = 253R^{1.3}$; outer
rainband: $Z = 341R^{1.25}$) are given in Marks et al. (1993) and over the east pacific basin during typhoon Lekima (Eyewall: $Z =$
235 $961.54R^{1.85}$; Inner rainband: $Z = 280.23R^{1.86}$; outer rainband: $Z = 74.25R^{1.98}$) in Bao et al. (2020), is distinctly different
from the Bay of Bengal region (present study). Tropical cyclones over the Bay of Bengal and the Atlantic Ocean show an
increase in A value and in turn the size of raindrops and D_m with increasing distance from the cyclone eye while showing the
opposite in the eastern Pacific basin.

4 Effect of wind speed on estimated rain integral and polarimetric parameters

The vertical wind at aloft can influence the fall velocity of the hydrometeors. The vertical wind greater than 2 m s^{-1} sustains
very tiny time below 300 m altitude and persist for longer times at higher altitudes (Rogers et al., 1993). Thus, the vertical
wind close to the earth surface is assumed to be small and its effect on drop fall velocity is neglected as raindrops of 4 mm
240 and large require less than 12 m to attain the terminal velocity (Van Boxel et al., 1997). As the disdrometers are installed at
the earth's surface, the vertical wind effects are not considered in this study. The horizontal wind changes the raindrops falling
path, resulting in variations in the recorded DSD spectrum. When a raindrop falls with an angle, the residence time of the
raindrop in the laser beam increases, which enhances the attenuation at the detector, increases the measuring diameter, and
decreases the fall velocity. The wind speed measured at 8 m altitude near the disdrometer location is considered to account
245 for the effects of horizontal wind on DSD measurements. The number of data points observed in the eyewall (8 one-minute
samples) and outer rainband (6 one-minute samples) with wind speeds greater than 4 m s^{-1} is small, so the present study is
confined to two different wind speed intervals ($0-2 \text{ m s}^{-1}$ and $> 2 \text{ m s}^{-1}$).

The cyclonic DSDs are different from eyewall to inner rainband to outer rainband (Homeyer et al., 2021). The DSD ob-
servations during the NIVAR passage are first categorized into eyewall, inner, and outer rainbands following the classification
250 in Cecil et al. (2002). These categorized DSD spectra are further segregated with respect to R and wind speed, and the mean
spectra are plotted in Fig. 6. The DSD observations are not available at $R > 10 \text{ mm h}^{-1}$ with wind speed greater than 2 m
 s^{-1} in the outer rainband, so the mean DSD spectra are not shown in Fig. 6. Since the observations are made at the same
location, similarities between the three disdrometers specify the DSD characteristics of a TC, and disparities indicate the errors
in the observations due to differences in the measuring principle and hardware processing of disdrometers. Similarities show
255 an increase in the maximum raindrop size with increasing R up to 5 mm h^{-1} , and at higher intensities, the slope of the DSD
spectrum changes by increasing the number concentration of medium-sized raindrops (between 0.7 mm and 2 mm) at all wind
speeds in the three regions of a TC. The disparities show overestimation of small raindrops ($< 0.7 \text{ mm}$) by a factor of 10 to
100 by the LPM than JWD (except in the eyewall at $R < 5 \text{ mm h}^{-1}$) and PARSIVEL at all R. At large drop end ($> 2 \text{ mm}$),
LPM and PARSIVEL overestimates raindrops concentration than JWD at $R > 5 \text{ mm h}^{-1}$ in the inner rainband and at $R > 2$
260 mm h^{-1} in the outer rainband while this overestimation is not seen in the eyewall region. The overestimation of large raindrops
by laser disdrometers than JWD is not uniform in all the regions of NIVAR. This could be due to variations in the path of the
falling raindrops from the vertical direction that cause errors in the measuring diameter of raindrops by the laser disdrometers

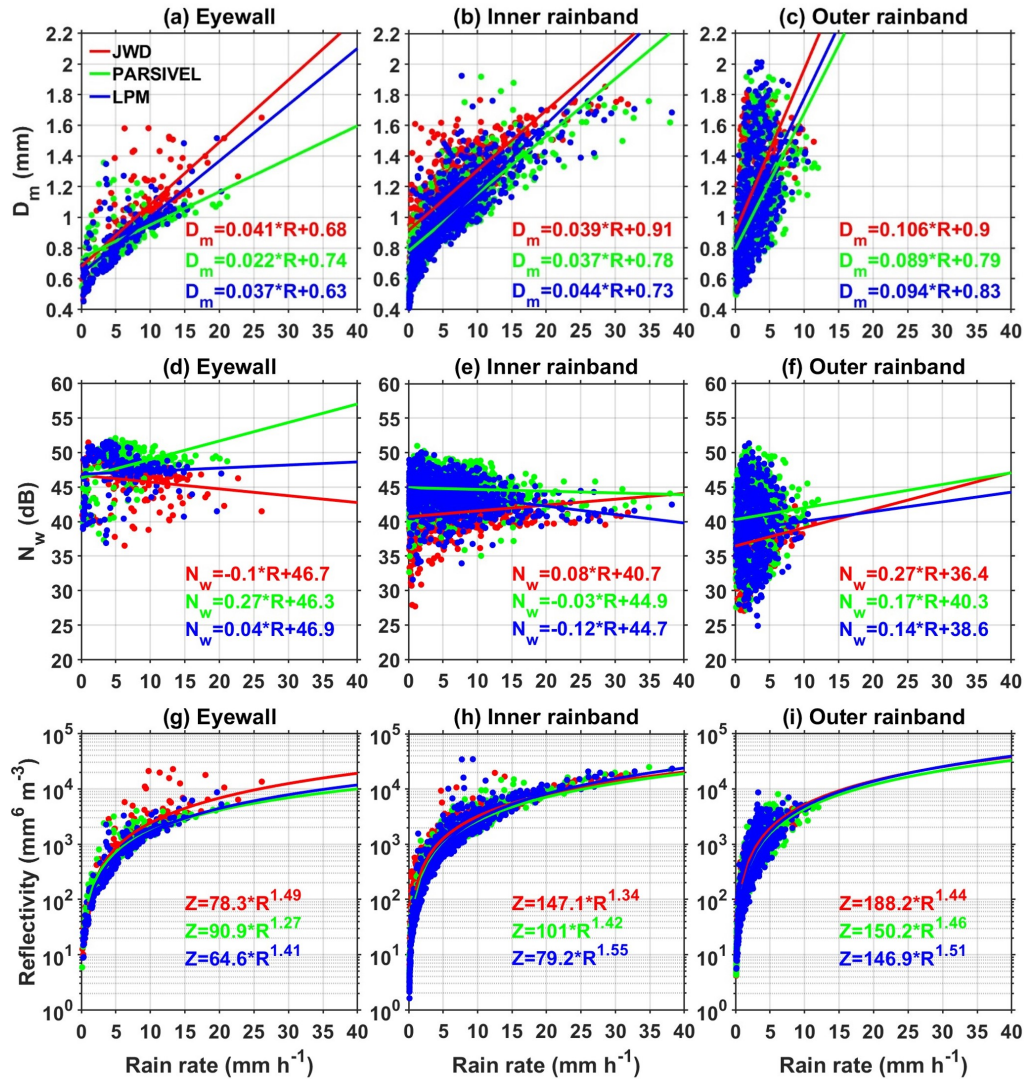


Figure 5. D_m (mm) as a function of rain rate (mm h^{-1}) in (a) eyewall, (b) inner, and (c) outer rainband regions of NIVAR observed by JWD, PARSIVEL, and LPM. The solid lines represent the linear fit at 95% confidence level. (d)-(f) same as (a)-(c) but for N_w . (g)-(i) same as (a)-(c) but for Z and the solid lines represent the power-law fit whose relations are shown in legends with the respective color.

or hardware issues present in the JWD, as noted in Tokay et al. (2005). Compared to PARSIVEL, LPM records a marginally more number of larger drops (> 2 mm) could be due to changes in the hardware processing of these disdrometers.

265 The D_m - R data segregated based on wind speed and region of a TC NIVAR are depicted in Fig. 7. The best liner fit at 95% confidence level to the D_m - R data obtained from each disdrometer is also indicated with solid lines (JWD - red; PARSIVEL - green; LPM - blue) in Fig. 7. The effect of wind speed is not uniform for all the disdrometers in different regions of a TC. For

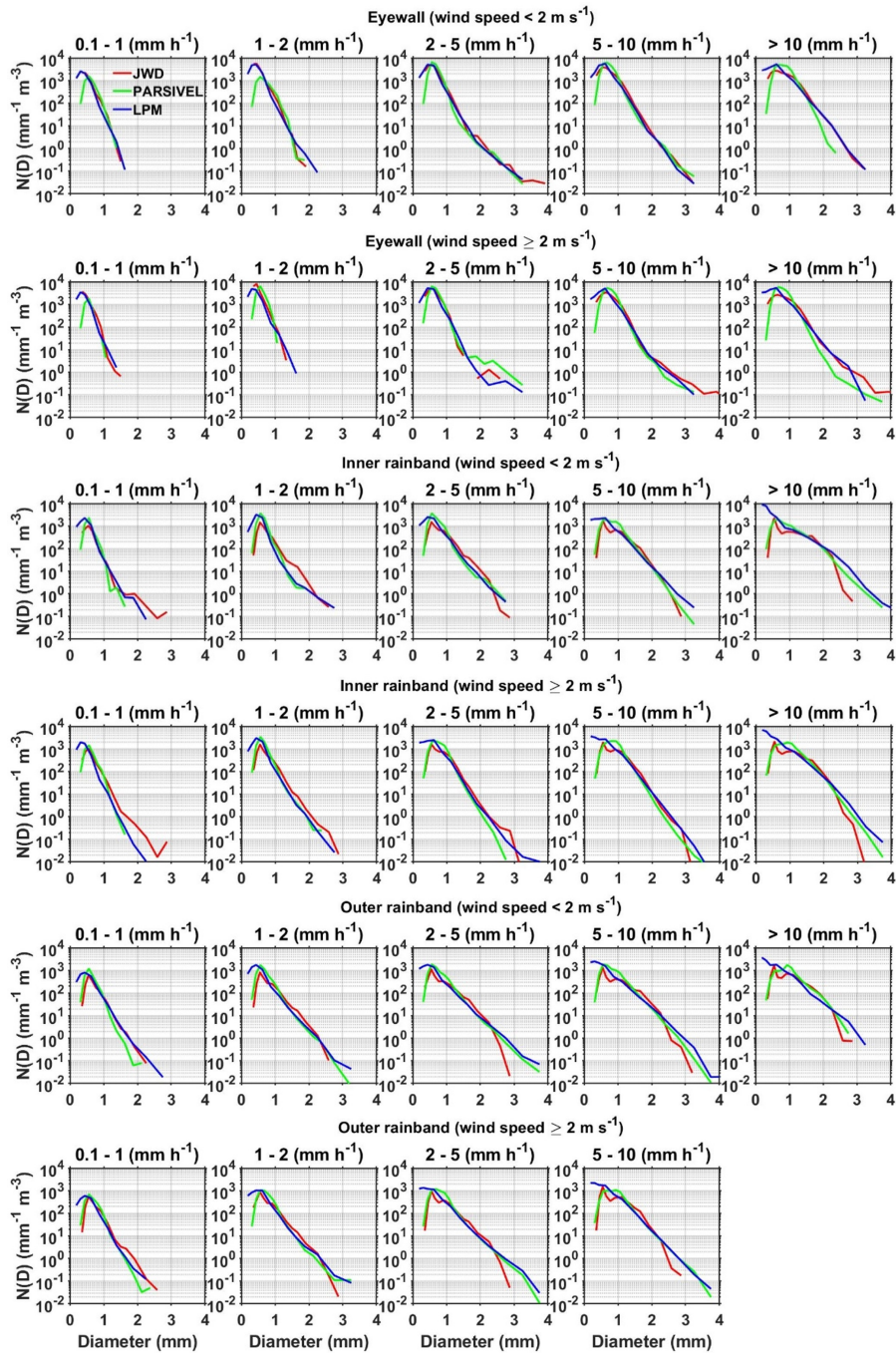


Figure 6. $N(D)$ in $\text{mm}^{-1} \text{m}^{-3}$ as a function of raindrop diameter (mm) in different rain rate and wind speed intervals associated with eyewall, inner rainband, and outer rainband of NIVAR cyclone observed by JWD, PARSIVEL, and LPM installed at Gadanki.

a given R, JWD shows an increase in D_m with wind speed in the eyewall region, while small variation in D_m with the wind in the inner and outer rainbands. PARSIVEL data show an increase in D_m with the wind in the eyewall, a decrease in D_m with the wind in the inner rainband, and small variations in the outer rainband. LPM shows an increase in D_m with the wind in the eyewall and inner rainband and minor variations in the outer rainband. The observed differences in the D_m -R relations under the same environmental conditions indicate that the DSD spectra recorded by three disdrometers are different. At a given R, irrespective of wind speed, large D_m values are found in the outer rainband and small D_m values in the eyewall region than in other regions of a TC. This is due to a decrease in the concentration of small raindrops and increases in the large raindrops from eyewall to inner rainband to outer rainband (Fig. 6). Though PARSIVEL underestimates the smaller drop concentrations, the estimated small D_m values than LPM and JWD at all wind speeds with $R > 5 \text{ mm h}^{-1}$ in the eyewall is due to recording a low concentration of large raindrops. At $R < 5 \text{ mm h}^{-1}$, PARSIVEL recordings show the similar DSD distribution with LPM and JWD at medium to large raindrops with a low concentration of small raindrops, resulting in larger D_m . In the eyewall, the overestimate of small and underestimate of large raindrops by LPM than JWD results in relatively smaller D_m values of LPM than JWD. However, at low wind speeds, the DSD distributions are similar, except the overestimation of small raindrops by LPM than JWD results in marginally small D_m for LPM than JWD in the eyewall. In the inner rainband, the concentration of small raindrops observed by JWD and PARSIVEL are similar and low compared to LPM. At medium and large raindrops, the raindrop concentration observed by PARSIVEL and LPM is similar and lower than the JWD. Thus, at all wind speeds with $R < 5 \text{ mm h}^{-1}$, the D_m values are small for PARSIVEL and large for JWD in the inner rainband. At higher rain intensities, LPM overestimates the small raindrop concentration (by two orders of magnitude), while both LPM and PARSIVEL underestimate the medium-sized and overestimates the large-sized raindrops than JWD. The imbalance between the small, medium, and large raindrops results in large D_m values for JWD at all wind speeds, while for LPM small D_m values at wind speed less than 2 m s^{-1} , and large D_m values at higher wind speeds than for PARSIVEL in the inner rainband. Although LPM and PARSIVEL show nearly the same distribution at the medium raindrops in the outer rainband, LPM overestimates the small and large raindrops, resulting in marginally larger D_m than PARSIVEL at all R and wind. Compared to JWD, LPM and PARSIVEL records a high concentration of large raindrops and a low concentration of medium-sized raindrops at all R and wind, which imbalance the DSD spectrum to produce marginally small D_m than JWD in the outer rainband.

The normalized DSD (Testud et al., 2001) indicates N_w ($\text{mm}^{-1} \text{ m}^{-3}$) is an intercept parameter of the exponential DSD with the same liquid water content and D_m of an observed DSD spectrum with any shape. N_w is converted into dB ($10 * \log_{10} N_w$) and as a function of R and wind for different regions of NIVAR are plotted in Fig. 8 to understand the effect of wind on drop concentration. In general, N_w increases with increasing R (Testud et al., 2001), while this is not always true when there is an imbalance between the decrease in small and increase in medium and large size raindrops (Ma et al., 2019). The N_w -R curves are different for various regions of a TC and varies with wind speed. JWD shows an increase in N_w with R in the inner and outer rainbands while a decrease in the eyewall at all wind speeds. The decrease in N_w with R of JWD is small at lower wind speed and considerable at higher wind speeds. PARSIVEL measurements indicate an increase in N_w with R in the eyewall and outer rainbands while a decrease in the inner rainband. The change in N_w with R of PARSIVEL is considerable at all wind speed in all the regions of a TC except at low wind speeds in the outer rainband and high wind speeds in the inner rainband.

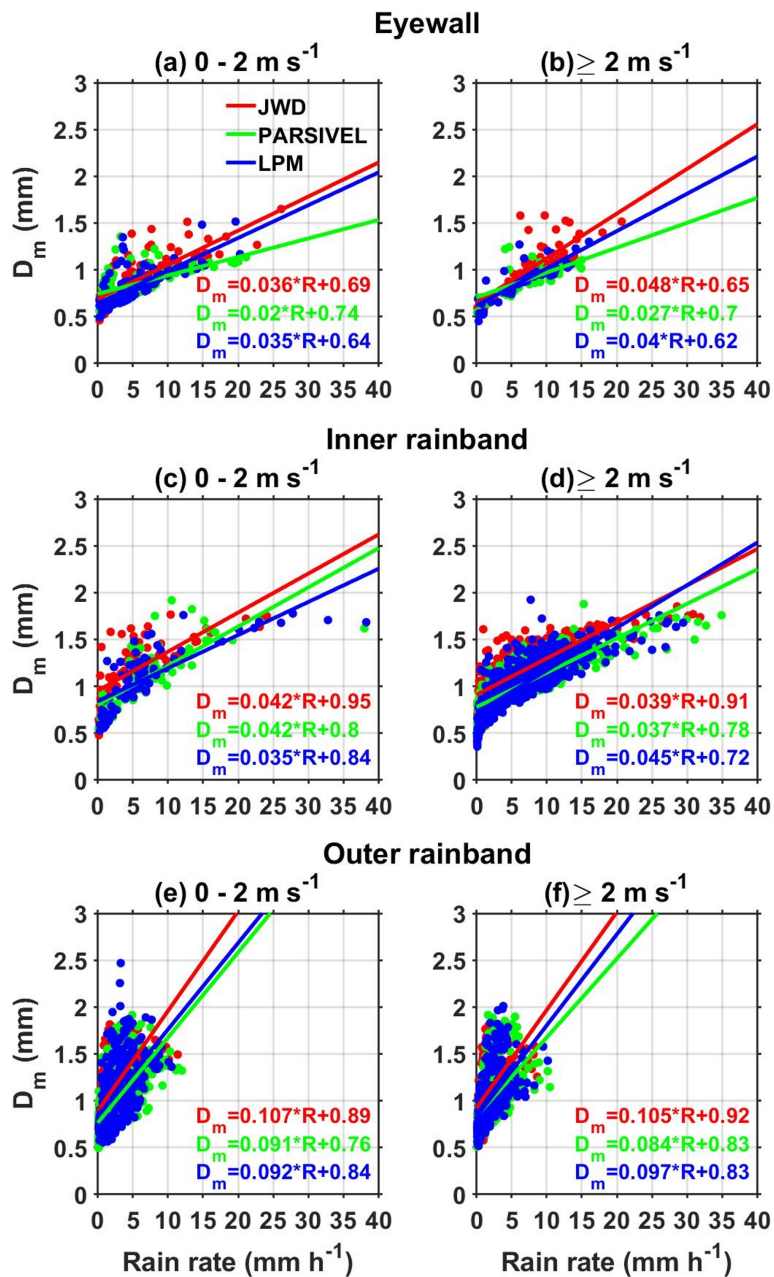


Figure 7. (a)-(b) D_m (mm) as a function of rain rate (mm h^{-1}) in the eyewall of NIVAR observed by JWD, PARSIVEL, and LPM during different surface wind speed intervals. The solid lines represent the linear fit at 95% confidence level whose relations are shown in legends with the respective color. (c)-(d) and (e)-(f) are the same as (a)-(b) but in the inner and outer rainbands of NIVAR, respectively.

LPM data show an increase in N_w with R in the outer rainband and a decrease in the inner rainband while increasing at low wind speeds and decreasing at high wind speeds in the eyewall. A sizable change in N_w with R of LPM is observed in the inner rainband and at high winds in the outer rainband and small in the eyewall and low windspeeds in the outer rainband. The N_w values are larger for PARSIVEL than LPM in three regions of a TC at all wind speeds. This could be due to the presence of more large drops in LPM than PARSIVEL. JWD shows smaller N_w values than LPM and PARSIVEL at R less than 15 mm h^{-1} . The change in the concentration of small raindrops observed by three disdrometers with R and wind speed is minimal in the outer rainband, resulting in an increase in N_w with R, as also observed in Figs. 5. Nonetheless, in the inner rainband and eyewall, the small drop concentration increases with R at all wind speeds, making an imbalance between the small and medium-sized raindrops that cause variations (increase/decrease) in N_w with R differently for different disdrometers.

The polarimetric parameter Z_{DR} provides information on measuring the reflectivity-weighted hydrometeors' shape within a sampling volume. Z_{DR} at a temperature of 20 °C (average surface temperature is 21 °C at Gadanki during the passage of NIVAR) in the X-band frequency estimated from the DSD spectra of JWD, LPM, and PARSIVEL as a function of R at different wind speeds are depicted in Fig. 9. For a given R, all disdrometers show large Z_{DR} in the outer rainband than in other regions of a TC. Relating three disdrometers, LPM shows large values than PARSIVEL and JWD in all regions of NIVAR except at wind speeds greater than 2 m s^{-1} in the eyewall, where JWD shows relatively large values. These observations are in accordance with the measure of more large raindrops by LPM in all the regions except in the eyewall at high wind speeds. Though D_m values of JWD are large and LPM are small in all regions, the small Z_{DR} derived from JWD and large Z_{DR} from LPM indicate the dependency of large raindrops is more pronounced in computing Z_{DR} than D_m . This could be due to the resonance effect of raindrops with drops greater than 3 mm in diameter at X-band frequency (Carey and Petersen, 2015) as depicted in Fig. 10. Z_{DR} at S-band show monotonic behaviour with raindrop diameter while at C- and X-bands show nonmonotonic behaviour. The nonmonotonic behaviour is mainly due to the resonance effect at $D > 5$ mm for C-band and $D > 3$ mm for X-band frequency radars. At resonating frequencies, the maximum deviation in Z_{DR} between C-band and S-band is ~ 5 dB, between X-band and S-band is ~ 0.7 dB. As the maximum raindrop size observed during NIVAR is less than 4 mm, the resonance effect is not applicable for C- and S-band retrievals. Regardless of wind speed, the laser disdrometer shows a large Z_{DR} in the inner rainband than in the eyewall, while JWD displays opposite features. This is due to the resonance effect caused by the presence of raindrops with a diameter greater than 3 mm in the eyewall region of the JWD data while in the inner rainband in the laser disdrometers data (Fig. 6). Z_{DR} estimated from LPM are marginally larger at high wind speeds than at low wind speeds in all regions of NIVAR. JWD estimated Z_{DR} increase with wind speed in the eyewall and nearly the same in inner and outer rainbands. Z_{DR} of PARSIVEL shows an increase with wind speed in the eyewall, a decrease in the inner rainband, and no change in the outer rainband.

The K_{DP} offers information on the mass of nonspherical hydrometeors in the volume of a radar beam. The K_{DP} estimated at X-band frequency with a temperature of 20 °C from three disdrometers as a function of R at different wind speeds is depicted in Fig. 11. The power-law relations of K_{DP} -R are also shown in Fig. 11. The K_{DP} -R relations show diversity in different regions of NIVAR, but all disdrometers show approximately the same relations in a given region except PARSIVEL

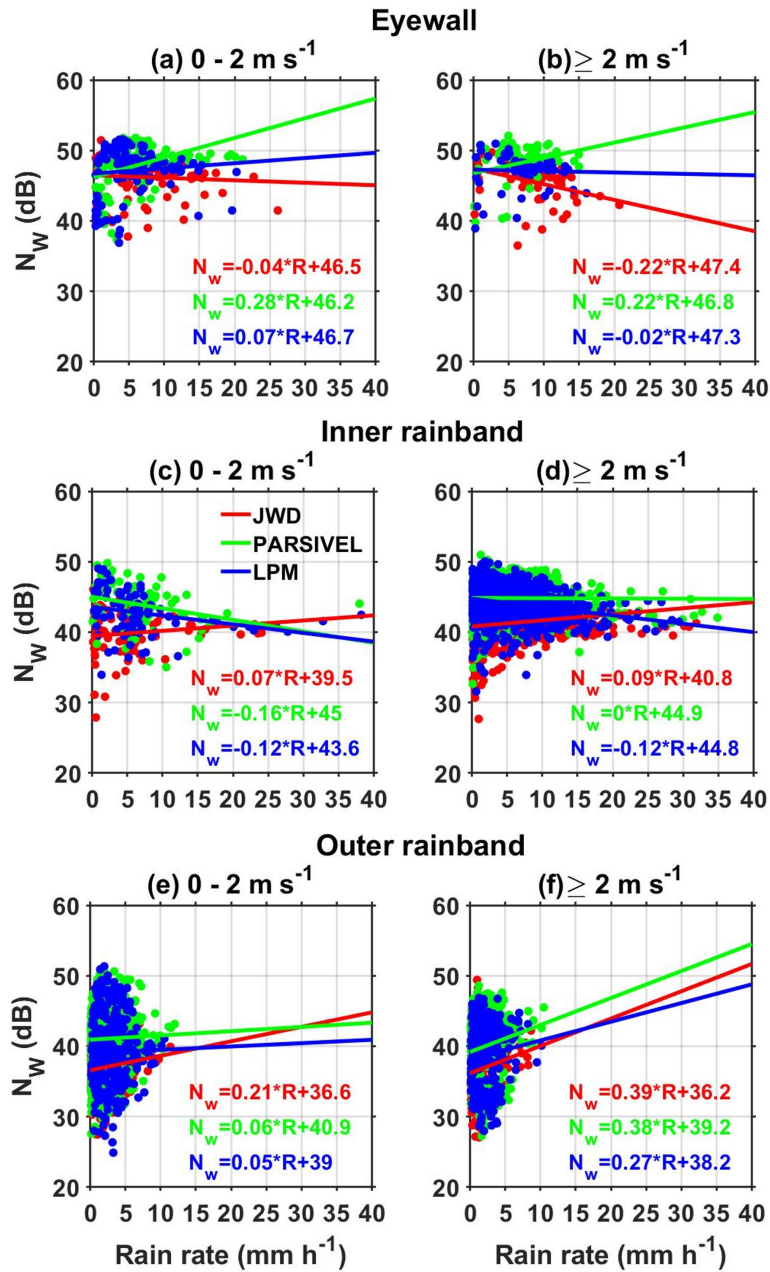


Figure 8. Same as Fig. 7 but for N_w (dB).

in the eyewall. The increase in K_{DP} indicates the increase in nonspherical particles with wind speed in the eyewall. However, K_{DP} decreases with wind speed in the outer rainband and shows the same values in the inner rainband.

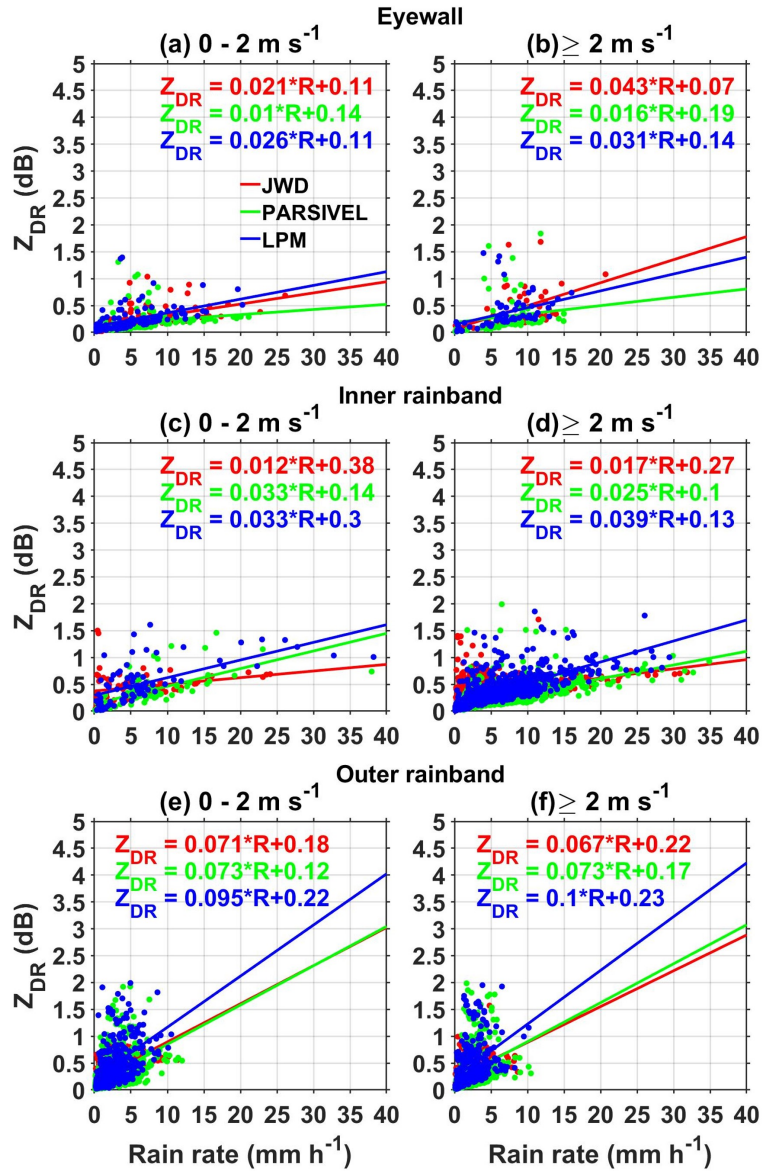


Figure 9. (a)-(b) Z_{DR} (dB) as a function of rain rate (mm h^{-1}) in the eyewall of NIVAR observed by JWD, PARSIVEL, and LPM during different surface wind speed intervals at X-band frequency in the ambient atmosphere with 20°C temperature. The solid lines represent the linear fit at 95% confidence level whose relations are shown in legends with the respective color. (c)-(d) and (e)-(f) are the same as (a)-(b) but in the inner and outer rainbands of NIVAR, respectively.

The polarimetric parameter K_{DP} is measured using the phase difference between the two polarizations, which is immune from attenuation. Hence K_{DP} is widely used to correct the attenuation and differential attenuation. Molecular absorption

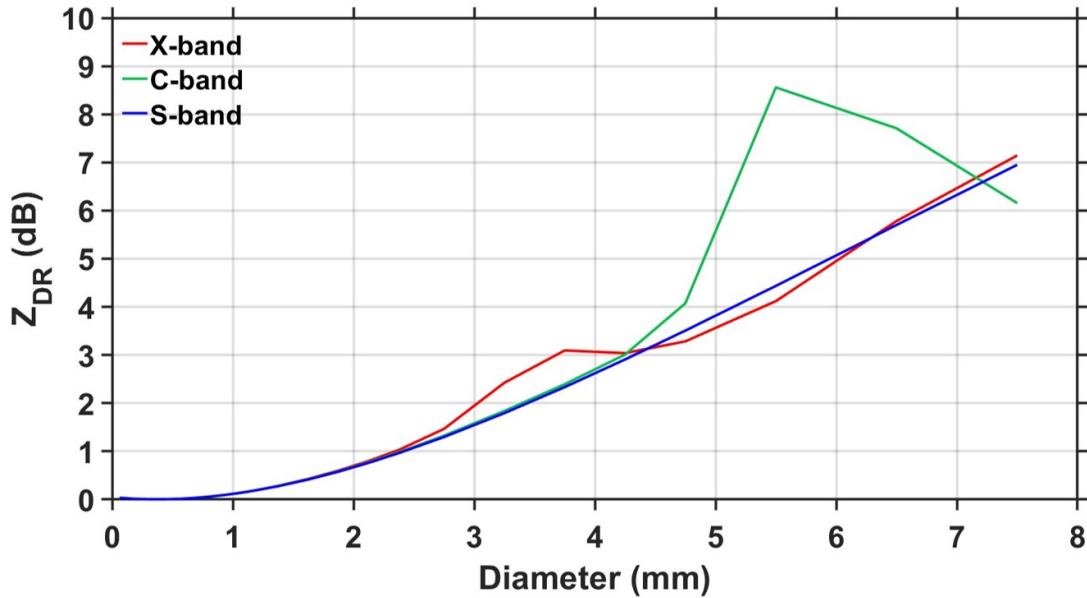


Figure 10. Z_{DR} (dB) as a function of monodisperse raindrop diameter (mm) at X-band (red), C-band (green), and S-band (blue) wavelengths. For the monodisperse simulations at a drop temperature of 20 °C, the refractive index of raindrops is estimated from Ray (1972), drop axis ratio is considered from Brandes et al. (2002).

and scattering out of the beam control the attenuation. The relations between A_H , A_{DP} , and K_{DP} are given in (17) and (18), and DSD measurements obtained from disdrometers are used to estimate these relations, whose coefficients are reliant on temperature (Jameson, 1992). The coefficient γ_H of A_H - K_{DP} relation at X-band frequency in the eyewall, inner, and outer rainbands at different temperatures and wind speeds are plotted in Fig. 12. The γ_H estimated from JWD, LPM, and PARSIVEL decrease with increasing temperature in all the regions of a TC. The molecular absorption (the imaginary part of the complex refractive index) enhances at low temperatures and causes an increase in attenuation with a decrease in temperature (Jameson, 1992; Smyth and Illingworth, 1998). The change in γ_H with temperature is not uniform in different regions of NIVAR due to variations in DSD between eyewall, inner, and outer rain bands. γ_H estimated from JWD is small (except in the eyewall at temperature > 25 °C and wind speed > 2 m s⁻¹) than other disdrometers in all regions of NIVAR. LPM estimated γ_H values are larger in the inner and outer rainbands while PARSIVEL in the eyewall at all temperatures and wind speeds than other disdrometers. In the inner and outer rainbands, the derived γ_H values are the same for laser disdrometers at lower temperatures and show marginal differences with increasing temperature. For a given temperature, γ_H derived from all disdrometers show slightly larger values at high wind speeds than at low wind speeds. For a given temperature and wind, γ_H shows negligible variations within the regions of a TC except for PARSIVEL in the eyewall. The γ_H variation with temperature shows considerable difference between the laser disdrometers in eyewall region at all wind speeds due to large differences in k_{DP} between them.

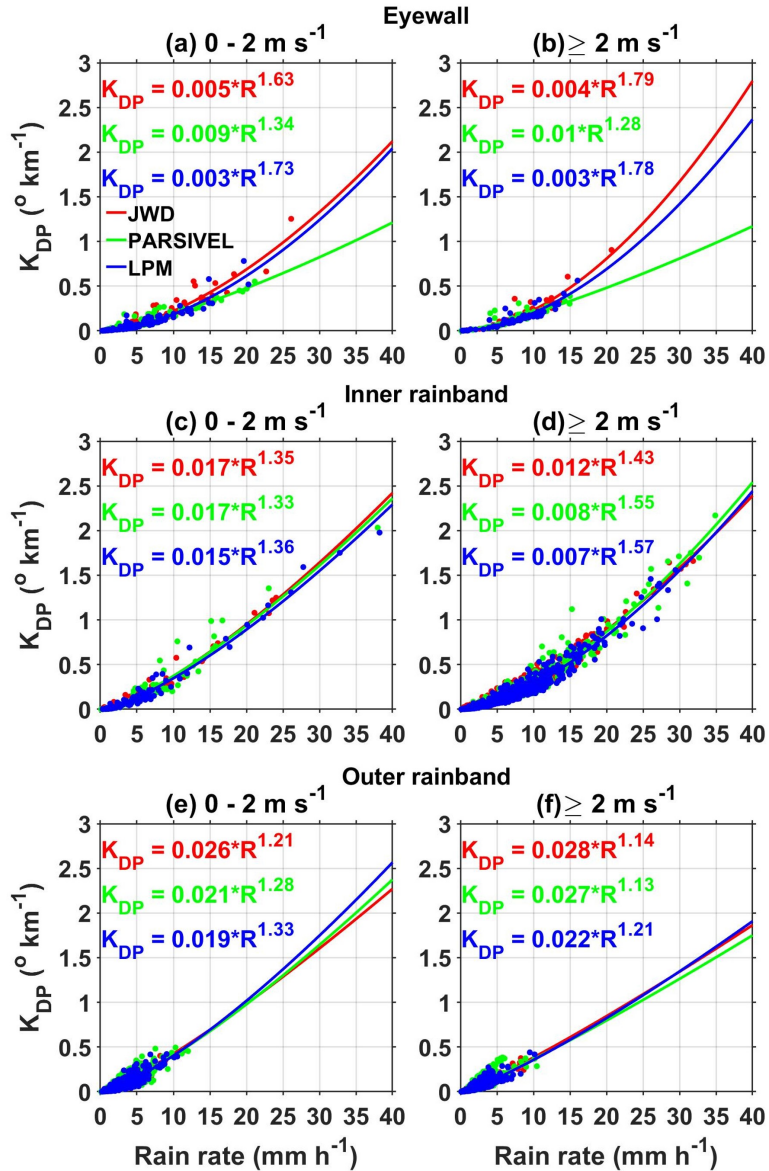


Figure 11. Same as Fig. 9 but for K_{DP} ($^{\circ} \text{km}^{-1}$) and the solid lines represent the power-law fit.

The differential attenuation coefficient γ_{DP} derived from A_{DP} - K_{DP} relations from JWD, LPM, and PARSIVEL at different temperatures and wind in the eyewall, inner, and outer rainbands are depicted in Fig. 13. For a given wind and temperature, large γ_{DP} values are observed for LPM and small values for JWD than other disdrometers in the inner and outer rainbands. In the eyewall for a given wind and temperature, γ_{DP} values are smaller for PARSIVEL, larger for LPM at wind speeds less than 2 m s^{-1} , and JWD at higher wind speeds than other disdrometers. JWD estimated γ_{DP} values show a small decrease with an

360

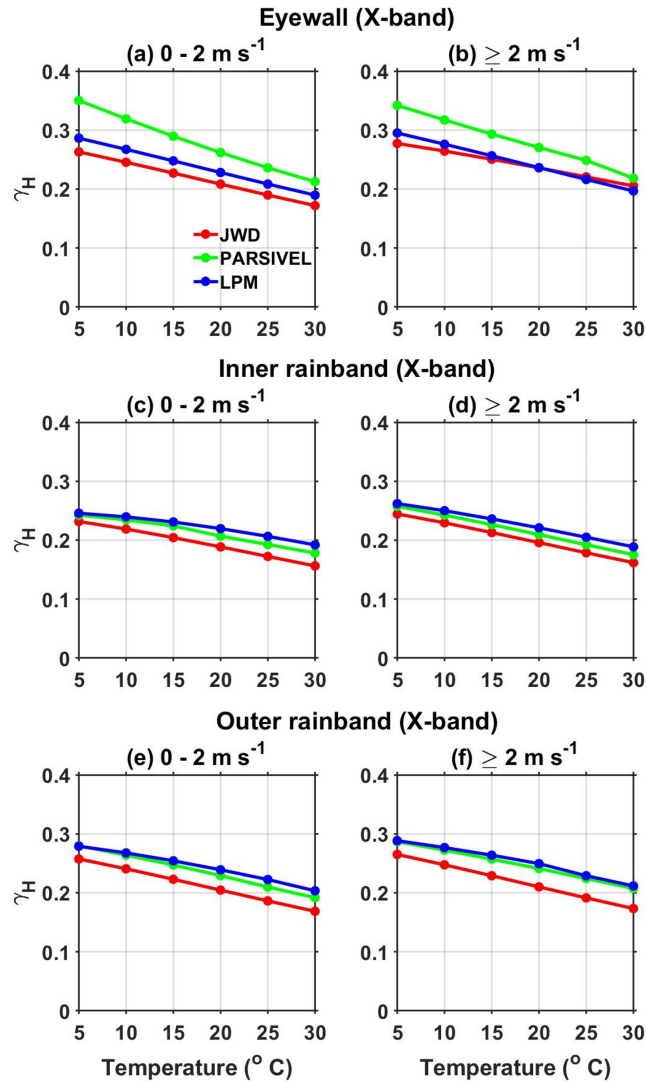


Figure 12. (a)-(b) γ_H as a function of temperature ($^{\circ}\text{C}$) in the eyewall of NIVAR observed by JWD, PARSIVEL, and LPM during different surface wind speed intervals at X-band frequency. (c)-(d) and (e)-(f) are the same as (a)-(b) but for the inner and outer rainbands of NIVAR, respectively.

increase in temperature in all the regions of a TC (except eyewall at high wind speeds). LPM and PARSIVEL estimated γ_{DP} values show a minuscule decrease with an increase in temperature in all regions of NIVAR at all wind speeds. JWD estimated γ_{DP} values are larger at high wind speeds than at low wind speeds in the eyewall and do not show variations with wind speeds in the inner and outer rainbands. PARSIVEL and LPM estimated γ_{DP} values are larger or nearly equal at high wind speeds than at low wind speeds in the eyewall and outer rainband while smaller in the inner rainband. Comparing Figs. 12 and 13, the

365

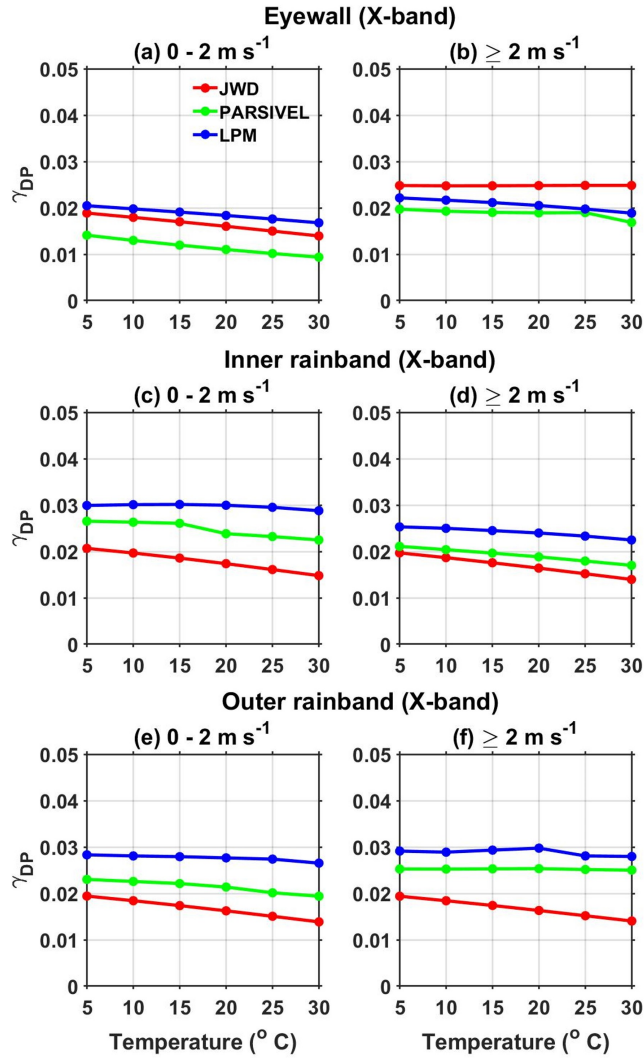


Figure 13. Same as Fig. 11 but for γ_{DP} .

γ_{DP} values are smaller and γ_H values are larger for PARSIVEL than LPM in the eyewall region indicating the effect of more medium sized raindrops on Z_{DR} , K_{DP} , A_H , and A_{DP} . Presence of more number of medium sized raindrops that are slightly deviated from sphericity will result in smaller Z_{DR} , K_{DP} , and A_{DP} and larger A_H .

370 The variation of γ_H and γ_{DP} with temperature estimated from DSD data recordings of JWD, LPM, and PARSIVEL at C-band and S-band frequencies are depicted in Figs. 1S-4S. Similar to the earlier studies (Bringi et al., 1990; Jameson, 1991; Park et al., 2005), the γ_H and γ_{DP} values are smaller at S-band followed by C-band than at X-band. All disdrometers estimated γ_H and γ_{DP} values decrease with increasing temperature both at S- and C-bands. For a given temperature and wind, γ_H values are approximately the same for the three disdrometers in the inner and outer rainbands but show differences in the eyewall at S-

375 and C-bands. Also, the effect of wind on γ_H is negligible in the eyewall and inner rainbands. Similar to X-band frequency, the γ_H values estimated at S- and C-band also show larger values for PARSIVEL and smaller for JWD than for other disdrometers in the eyewall regardless of the temperature and wind. Unlike γ_H , γ_{DP} shows variations between disdrometer in any given region of NIVAR at C-band while showing negligible variations at S-band. Regardless of temperature and wind γ_{DP} values are the same for a given disdrometer in the inner and outer rainbands but increase with wind speed in the eyewall.

380 5 Conclusions

The characteristics of landfalling TC NIVAR are revealed using JWD, PARSIVEL, and LPM observations made at Gadanki, India. The three disdrometers are installed at the same location; the measurements are used to study the effect of wind speed and variations in measuring principles and data processing algorithms on the recorded DSD spectra and, in turn, on the retrieved rain integral and polarimetric parameters.

- 385 1. JWD measures raindrops of diameters up to 3 mm while LPM and PARSIVEL record up to 4 mm. The raindrop more residing time in the laser beam due to deviation in fall path from nadir by strong horizontal winds resulting in an additional reduction in the beam intensity at the receiver. Thus, the laser disdrometers overestimate the size of the raindrops in the presence of horizontal winds.
- 390 2. The DSD spectrum width increases with increasing R by observing larger-sized raindrops. Also, the concentration of raindrops of diameters between 0.7 mm to 1.5 mm increases in all the regions of a TC. However, the magnitude of the increase is high in the eyewall than in the inner and outer rainbands.
- 395 3. The DSD characteristics reveal relatively larger D_m in the outer rainband and smaller D_m in the eyewall than in other regions of a TC. The maximum D_m observed is less than 2 mm, which follows the earlier studies. Raindrops of diameter 3 mm in size are observed infrequently in the eyewall, while they are present in the inner and outer rainbands at R greater than 5 mm h^{-1} .
4. The Z-R relations are distinctly different in various regions of a TC and for different disdrometers. The Z-R relations estimated from three disdrometers indicate comparatively larger Z for a given R in the outer rainband followed by the inner rainband and smaller Z in the eyewall.
- 400 5. The N_w increases with increasing R at all wind speeds in the outer rainband while showing an increase/decrease differently for various disdrometers in the eyewall and inner rainbands. The imbalance between small and medium-sized raindrops causes variations in N_w with R at different wind speeds.
6. Z_{DR} estimated at X-band frequency with a temperature of $20 \text{ }^\circ\text{C}$ shows larger values in the outer rainband than in the eyewall and inner rainband. Three disdrometers estimated Z_{DR} show differences in inner rainband and eyewall at different wind speeds. In the inner and outer rainbands, the laser disdrometers observe raindrops with a diameter greater

405 than 3 mm, which cause resonance at X-band frequency and results in large Z_{DR} than JWD, whose measures show raindrops till 3 mm only.

7. In the eyewall region, the observed smaller K_{DP} by PARSIVEL at all wind speeds and R indicates the presence of a low number concentration of nonspherical raindrops results in smaller Z_{DR} values than in LPM and JWD.
8. The coefficients of attenuation (γ_H) and specific attenuation (γ_{DP}) decrease with increasing temperature but differ for
410 different disdrometers. Regardless of wind, for a given K_{DP} , attenuation and differential attenuation are more for LPM and PARSVEL than JWD in inner and outer rainbands while differing in the eyewall.
9. LPM overestimates the small raindrops (< 0.7 mm) by a factor of 10 to 100 than JWD (except in the eyewall) and PARSIVEL at all R. At the large drop end (> 2 mm), JWD underestimates raindrops concentration than LPM and PARSIVEL at $R > 5$ mm h⁻¹ in the inner rainband and at $R > 2$ mm h⁻¹ in the outer rainband while this underestimation
415 is not seen in the eyewall region. The underestimation of large raindrops by JWD is not uniform in all the regions of NIVAR. Compared to PARSIVEL, LPM records a marginally more number of larger drops (> 2 mm).
10. The effect of wind speed on the recorded DSD and estimated rain integral and polarimetric parameters are not uniform in various regions of NIVAR for different disdrometers as these effects are further modified by measuring principle and hardware processing.

420 *Data availability.* The complete dataset used in the analysis can be obtained by contacting the data dissemination unit of the National Atmospheric Research Laboratory. The figures are generated using MATLAB software.

Author contributions. Basivi Radhakrishna conceived the idea, conducted the detailed analysis, and contributed to the writing.

Competing interests. The author declare that he has no conflict of interest.

Acknowledgements. The author thank the three anonymous reviewers and Associate editor Dr. Zamin A. Kanji for their suggestions in
425 improving the quality of the manuscript.

References

- Adirosi, E., Roberto, N., Montopoli, M., Gorgucci, E., and Baldini, L.: Influence of Disdrometer Type on Weather Radar Algorithms from Measured DSD: Application to Italian Climatology, *Atmosphere*, 9, 560, <https://doi.org/10.3390/atmos9090360>, 2018.
- 430 Angulo-Martínez, M., Beguería, S., Latorre, B., and Fernández-Raga, M.: Comparison of precipitation measurements by OTT Parsivel² and Thies LPM optical disdrometers, *Hydrology and Earth System Sciences*, 22, 2811–2837, <https://doi.org/10.5194/hess-22-2811-2018>, 2018.
- Atlas, D., Ulbrich, C. W., Marks Jr., F. D., Amitai, E., and Williams, C. R.: Systematic variation of drop size and radar-rainfall relations, *Journal of Geophysical Research: Atmospheres*, 104, 6155–6169, <https://doi.org/10.1029/1998JD200098>, 1999.
- Bao, X., Wu, L., Zhang, S., Yuan, H., and Wang, H.: A Comparison of Convective Raindrop Size Distributions in the Eyewall and Spiral Rainbands of Typhoon Lekima (2019), *Geophysical Research Letters*, 47, e2020GL090729, <https://doi.org/10.1029/2020GL090729>, 2020.
- 435 Bosart, L. F., Bracken, W. E., Molinari, J., Velden, C. S., and Black, P. G.: Environmental Influences on the Rapid Intensification of Hurricane Opal (1995) over the Gulf of Mexico, *Monthly Weather Review*, 128, 322–352, [https://doi.org/10.1175/1520-0493\(2000\)128<0322:EIOTRI>2.0.CO;2](https://doi.org/10.1175/1520-0493(2000)128<0322:EIOTRI>2.0.CO;2), 2000.
- 440 Brandes, E. A., Zhang, G., and Vivekanandan, J.: Experiments in Rainfall Estimation with a Polarimetric Radar in a Subtropical Environment, *Journal of Applied Meteorology*, 41, 674–685, [https://doi.org/10.1175/1520-0450\(2002\)041<0674:EIREWA>2.0.CO;2](https://doi.org/10.1175/1520-0450(2002)041<0674:EIREWA>2.0.CO;2), 2002.
- Bringi, V. N., Chandrasekar, V., Balakrishnan, N., and Zrnić, D. S.: An Examination of Propagation Effects in Rainfall on Radar Measurements at Microwave Frequencies, *Journal of Atmospheric and Oceanic Technology*, 7, 829–840, [https://doi.org/10.1175/1520-0426\(1990\)007<0829:AEOPEI>2.0.CO;2](https://doi.org/10.1175/1520-0426(1990)007<0829:AEOPEI>2.0.CO;2), 1990.
- 445 Capozzi, V., Annella, C., Montopoli, M., Adirosi, E., Fusco, G., and Budillon, G.: Influence of wind-induced effects on laser disdrometer measurements: Analysis and compensation strategies, *Remote Sensing*, 13, 3028, 2021.
- Carey, L. D. and Petersen, W. A.: Sensitivity of C-Band Polarimetric Radar–Based Drop Size Estimates to Maximum Diameter, *Journal of Applied Meteorology and Climatology*, 54, 1352–1371, <https://doi.org/10.1175/JAMC-D-14-0079.1>, 2015.
- 450 Cecil, D. J., Zipser, E. J., and Nesbitt, S. W.: Reflectivity, Ice Scattering, and Lightning Characteristics of Hurricane Eyewalls and Rainbands. Part I: Quantitative Description, *Monthly Weather Review*, 130, 769–784, [https://doi.org/10.1175/1520-0493\(2002\)130<0769:RISALC>2.0.CO;2](https://doi.org/10.1175/1520-0493(2002)130<0769:RISALC>2.0.CO;2), 2002.
- Chen, B.-J., Wang, Y., and Ming, J.: Microphysical characteristics of the raindrop size distribution in typhoon Morakot (2009), *Journal of Tropical Meteorology*, 18, 162–171, <https://doi.org/10.3969/j.issn.1006-8775.2012.02.006>, 2012.
- DeMaria, M., Sampson, C. R., Knaff, J. A., and Musgrave, K. D.: Is Tropical Cyclone Intensity Guidance Improving?, *Bulletin of the American Meteorological Society*, 95, 387–398, <https://doi.org/10.1175/BAMS-D-12-00240.1>, 2014.
- 455 Dvorak, V. F.: Tropical cyclone intensity analysis using satellite data, vol. 11, US Department of Commerce, National Oceanic and Atmospheric Administration, 1984.
- Fierro, A. O. and Mansell, E. R.: Electrification and Lightning in Idealized Simulations of a Hurricane-Like Vortex Subject to Wind Shear and Sea Surface Temperature Cooling, *Journal of the Atmospheric Sciences*, 74, 2023–2041, <https://doi.org/10.1175/JAS-D-16-0270.1>, 2017.
- 460

- Friedrich, K., Higgins, S., Masters, F. J., and Lopez, C. R.: Articulating and Stationary PARSIVEL Disdrometer Measurements in Conditions with Strong Winds and Heavy Rainfall, *Journal of Atmospheric and Oceanic Technology*, 30, 2063–2080, <https://doi.org/10.1175/JTECH-D-12-00254.1>, 2013.
- 465 Guyot, A., Pudashine, J., Protat, A., Uijlenhoet, R., Pauwels, V. R. N., Seed, A., and Walker, J. P.: Effect of disdrometer type on rain drop size distribution characterisation: a new dataset for south-eastern Australia, *Hydrology and Earth System Sciences*, 23, 4737–4761, <https://doi.org/10.5194/hess-23-4737-2019>, 2019.
- Hanley, D., Molinari, J., and Keyser, D.: A Composite Study of the Interactions between Tropical Cyclones and Upper-Tropospheric Troughs, *Monthly Weather Review*, 129, 2570–2584, [https://doi.org/10.1175/1520-0493\(2001\)129<2570:ACSOTI>2.0.CO;2](https://doi.org/10.1175/1520-0493(2001)129<2570:ACSOTI>2.0.CO;2), 2001.
- Hendricks, E. A., Peng, M. S., Ge, X., and Li, T.: Performance of a Dynamic Initialization Scheme in the Coupled
470 Ocean–Atmosphere Mesoscale Prediction System for Tropical Cyclones (COAMPS-TC), *Weather and Forecasting*, 25, 650–663, <https://doi.org/10.1175/WAF-D-10-05051.1>, 2011.
- Homeyer, C. R., Fierro, A. O., Schenkel, B. A., Didlake, A. C., McFarquhar, G. M., Hu, J., Ryzhkov, A. V., Basara, J. B., Murphy, A. M., and Zawislak, J.: Polarimetric Signatures in Landfalling Tropical Cyclones, *Monthly Weather Review*, 149, 131–154, <https://doi.org/10.1175/MWR-D-20-01111.1>, 2021.
- 475 Houze, R. A.: Clouds in Tropical Cyclones, *Monthly Weather Review*, 138, 293–344, <https://doi.org/10.1175/2009MWR2989.1>, 2010.
- Huffman, G. J., Bolvin, D. T., Braithwaite, D., Hsu, K.-L., Joyce, R. J., Kidd, C., Nelkin, E. J., Sorooshian, S., Stocker, E. F., Tan, J., Wolff, D. B., and Xie, P.: Integrated Multi-satellite Retrievals for the Global Precipitation Measurement (GPM) Mission (IMERG), pp. 343–353, Springer International Publishing, Cham, https://doi.org/10.1007/978-3-030-24568-9_19, 2020.
- Illingworth, A. J. and Stevens, C. J.: An Optical Disdrometer for the Measurement of Raindrop Size Spectra in Windy Conditions, *Journal
480 of Atmospheric and Oceanic Technology*, 4, 411–421, [https://doi.org/10.1175/1520-0426\(1987\)004<0411:AODFTM>2.0.CO;2](https://doi.org/10.1175/1520-0426(1987)004<0411:AODFTM>2.0.CO;2), 1987.
- Jaffrain, J. and Berne, A.: Experimental Quantification of the Sampling Uncertainty Associated with Measurements from PARSIVEL Disdrometers, *Journal of Hydrometeorology*, 12, 352 – 370, <https://doi.org/10.1175/2010JHM1244.1>, 2011.
- Jameson, A. R.: Polarization Radar Measurements in Rain at 5 and 9 GHz, *Journal of Applied Meteorology and Climatology*, 30, 1500–1513, [https://doi.org/10.1175/1520-0450\(1991\)030<1500:PRMIRA>2.0.CO;2](https://doi.org/10.1175/1520-0450(1991)030<1500:PRMIRA>2.0.CO;2), 1991.
- 485 Jameson, A. R.: The Effect of Temperature on Attenuation-Correction Schemes in Rain Using Polarization Propagation Differential Phase Shift, *Journal of Applied Meteorology and Climatology*, 31, 1106–1118, [https://doi.org/10.1175/1520-0450\(1992\)031<1106:TEOTOA>2.0.CO;2](https://doi.org/10.1175/1520-0450(1992)031<1106:TEOTOA>2.0.CO;2), 1992.
- Joss, J. and Waldvogel, A.: Ein spektrograph für niederschlagstropfen mit automatischer auswertung, *Pure and applied Geophysics*, 68, 240–246, <https://doi.org/10.1007/BF00874898>, 1967.
- 490 Khain, A., Lynn, B., and Shpund, J.: High resolution WRF simulations of Hurricane Irene: Sensitivity to aerosols and choice of microphysical schemes, *Atmospheric Research*, 167, 129–145, <https://doi.org/10.1016/j.atmosres.2015.07.014>, 2016.
- Knapp, K. R., Kruk, M. C., Levinson, D. H., Diamond, H. J., and Neumann, C. J.: The International Best Track Archive for Climate Stewardship (IBTrACS): Unifying Tropical Cyclone Data, *Bulletin of the American Meteorological Society*, 91, 363–376, <https://doi.org/10.1175/2009BAMS2755.1>, 2010.
- 495 Krajewski, W. F., Kruger, A., Caracciolo, C., Golé, P., Barthes, L., Creutin, J.-D., Delahaye, J.-Y., Nikolopoulos, E. I., Ogden, F., and Vinson, J.-P.: DEVEX-disdrometer evaluation experiment: Basic results and implications for hydrologic studies, *Advances in Water Resources*, 29, 311–325, <https://doi.org/10.1016/j.advwatres.2005.03.018>, 2006.

- Kruger, A. and Krajewski, W. F.: Two-Dimensional Video Disdrometer: A Description, *Journal of Atmospheric and Oceanic Technology*, 19, 602–617, [https://doi.org/10.1175/1520-0426\(2002\)019<0602:TDVDAD>2.0.CO;2](https://doi.org/10.1175/1520-0426(2002)019<0602:TDVDAD>2.0.CO;2), 2002.
- 500 Löffler-Mang, M. and Joss, J.: An Optical Disdrometer for Measuring Size and Velocity of Hydrometeors, *Journal of Atmospheric and Oceanic Technology*, 17, 130–139, [https://doi.org/10.1175/1520-0426\(2000\)017<0130:AODFMS>2.0.CO;2](https://doi.org/10.1175/1520-0426(2000)017<0130:AODFMS>2.0.CO;2), 2000.
- Ma, Y., Ni, G., Chandra, C. V., Tian, F., and Chen, H.: Statistical characteristics of raindrop size distribution during rainy seasons in the Beijing urban area and implications for radar rainfall estimation, *Hydrology and Earth System Sciences*, 23, 4153–4170, <https://doi.org/10.5194/hess-23-4153-2019>, 2019.
- 505 Marks, F. D., Atlas, D., and Willis, P. T.: Probability-matched Reflectivity-Rainfall Relations for a Hurricane from Aircraft Observations, *Journal of Applied Meteorology and Climatology*, 32, 1134 – 1141, [https://doi.org/10.1175/1520-0450\(1993\)032<1134:PMRRRF>2.0.CO;2](https://doi.org/10.1175/1520-0450(1993)032<1134:PMRRRF>2.0.CO;2), 1993.
- McFarquhar, G. M., Zhang, H., Heymsfield, G., Halverson, J. B., Hood, R., Dudhia, J., and Marks, F.: Factors Affecting the Evolution of Hurricane Erin (2001) and the Distributions of Hydrometeors: Role of Microphysical Processes, *Journal of the Atmospheric Sciences*, 63, 510 127–150, <https://doi.org/10.1175/JAS3590.1>, 2006.
- Merceret, F. J.: On the Size Distribution of Raindrops in Hurricane Ginger, *Monthly Weather Review*, 102, 714–716, [https://doi.org/10.1175/1520-0493\(1974\)102<0714:OTSDOR>2.0.CO;2](https://doi.org/10.1175/1520-0493(1974)102<0714:OTSDOR>2.0.CO;2), 1974.
- Mishchenko, M. I., Travis, L. D., and Mackowski, D. W.: T-matrix computations of light scattering by nonspherical particles: A review, *Journal of Quantitative Spectroscopy and Radiative Transfer*, 55, 535–575, [https://doi.org/10.1016/0022-4073\(96\)00002-7](https://doi.org/10.1016/0022-4073(96)00002-7), 1996.
- 515 Molinari, J. and Vollaro, D.: External Influences on Hurricane Intensity. Part I: Outflow Layer Eddy Angular Momentum Fluxes, *Journal of Atmospheric Sciences*, 46, 1093–1105, [https://doi.org/10.1175/1520-0469\(1989\)046<1093:EIOHIP>2.0.CO;2](https://doi.org/10.1175/1520-0469(1989)046<1093:EIOHIP>2.0.CO;2), 1989.
- Nešpor, V., Krajewski, W. F., and Kruger, A.: Wind-Induced Error of Raindrop Size Distribution Measurement Using a Two-Dimensional Video Disdrometer, *Journal of Atmospheric and Oceanic Technology*, 17, 1483 – 1492, [https://doi.org/10.1175/1520-0426\(2000\)017<1483:WIEORS>2.0.CO;2](https://doi.org/10.1175/1520-0426(2000)017<1483:WIEORS>2.0.CO;2), 2000.
- 520 Park, S.-G., Bringi, V. N., Chandrasekar, V., Maki, M., and Iwanami, K.: Correction of Radar Reflectivity and Differential Reflectivity for Rain Attenuation at X Band. Part I: Theoretical and Empirical Basis, *Journal of Atmospheric and Oceanic Technology*, 22, 1621–1632, <https://doi.org/10.1175/JTECH1803.1>, 2005.
- Radhakrishna, B. and Rao, T. N.: Differences in cyclonic raindrop size distribution from southwest to northeast monsoon season and from that of noncyclonic rain, *Journal of Geophysical Research: Atmospheres*, 115, D16 205, <https://doi.org/10.1029/2009JD013355>, 2010.
- 525 Radhakrishna, B., Saikranthi, K., and Rao, T. N.: Regional differences in raindrop size distribution within Indian subcontinent and adjoining seas as inferred from global precipitation measurement dual-frequency precipitation radar, *Journal of the Meteorological Society of Japan*. Ser. II, 98, 573–584, <https://doi.org/10.2151/jmsj.2020-030>, 2020.
- Rao, T. N., Amarjyothi, K., and Rao, S.: Attenuation relations for monsoonal rain at the X band from disdrometric measurements: Dependency on temperature, raindrop size distribution and drop shape models, *Quarterly Journal of the Royal Meteorological Society*, 144, 530 64–76, <https://doi.org/10.1002/qj.3291>, 2018.
- Raupach, T. H. and Berne, A.: Correction of raindrop size distributions measured by Parsivel disdrometers, using a two-dimensional video disdrometer as a reference, *Atmospheric Measurement Techniques*, 8, 343–365, <https://doi.org/10.5194/amt-8-343-2015>, 2015.
- Raupach, T. H., Thurai, M., Bringi, V. N., and Berne, A.: Reconstructing the Drizzle Mode of the Raindrop Size Distribution Using Double-Moment Normalization, *Journal of Applied Meteorology and Climatology*, 58, 145 – 164, <https://doi.org/10.1175/JAMC-D-18-0156.1>, 535 2019.

- Ray, P. S.: Broadband Complex Refractive Indices of Ice and Water, *Applied Optics*, 11, 1836–1844, <https://doi.org/10.1364/AO.11.001836>, 1972.
- Rogers, R. R., Ecklund, W. L., Carter, D. A., Gage, K. S., and Ethier, S. A.: Research Applications of a Boundary-Layer Wind Profiler, *Bulletin of the American Meteorological Society*, 74, 567 – 580, [https://doi.org/10.1175/1520-0477\(1993\)074<0567:RAOABL>2.0.CO;2](https://doi.org/10.1175/1520-0477(1993)074<0567:RAOABL>2.0.CO;2), 540 1993.
- Rosenfeld, D. and Ulbrich, C. W.: Cloud Microphysical Properties, Processes, and Rainfall Estimation Opportunities, *Meteorological Monographs*, 30, 237–258, [https://doi.org/10.1175/0065-9401\(2003\)030<0237:CMPPAR>2.0.CO;2](https://doi.org/10.1175/0065-9401(2003)030<0237:CMPPAR>2.0.CO;2), 2003.
- Smyth, T. J. and Illingworth, A. J.: Correction for attenuation of radar reflectivity using polarization data, *Quarterly Journal of the Royal Meteorological Society*, 124, 2393–2415, <https://doi.org/10.1002/qj.49712455111>, 1998.
- 545 Testud, J., Oury, S., Black, R. A., Amayenc, P., and Dou, X.: The Concept of “Normalized” Distribution to Describe Raindrop Spectra: A Tool for Cloud Physics and Cloud Remote Sensing, *Journal of Applied Meteorology*, 40, 1118–1140, [https://doi.org/10.1175/1520-0450\(2001\)040<1118:TCOND>2.0.CO;2](https://doi.org/10.1175/1520-0450(2001)040<1118:TCOND>2.0.CO;2), 2001.
- Thurai, M. and Bringi, V. N.: Application of the Generalized Gamma Model to Represent the Full Rain Drop Size Distribution Spectra, *Journal of Applied Meteorology and Climatology*, 57, 1197–1210, <https://doi.org/10.1175/jamc-d-17-0235.1>, 2018.
- 550 Thurai, M., Petersen, W. A., Tokay, A., Schultz, C., and Gatlin, P.: Drop size distribution comparisons between Parsivel and 2-D video disdrometers, *Advances in Geosciences*, 30, 3–9, <https://doi.org/10.5194/adgeo-30-3-2011>, 2011.
- Thurai, M., Gatlin, P., Bringi, V. N., Petersen, W., Kennedy, P., Notaroš, B., and Carey, L.: Toward Completing the Raindrop Size Spectrum: Case Studies Involving 2D-Video Disdrometer, Droplet Spectrometer, and Polarimetric Radar Measurements, *Journal of Applied Meteorology and Climatology*, 56, 877–896, <https://doi.org/10.1175/JAMC-D-16-0304.1>, 2017.
- 555 Tokay, A., Bashor, P. G., and Wolff, K. R.: Error Characteristics of Rainfall Measurements by Collocated Joss–Waldvogel Disdrometers, *Journal of Atmospheric and Oceanic Technology*, 22, 513–527, <https://doi.org/10.1175/JTECH1734.1>, 2005.
- Tokay, A., Bashor, P. G., Habib, E., and Kasparis, T.: Raindrop Size Distribution Measurements in Tropical Cyclones, *Monthly Weather Review*, 136, 1669–1685, <https://doi.org/10.1175/2007MWR2122.1>, 2008.
- Tokay, A., Wolff, D. B., and Petersen, W. A.: Evaluation of the New Version of the Laser-Optical Disdrometer, OTT Parsivel2, *Journal of Atmospheric and Oceanic Technology*, 31, 1276–1288, <https://doi.org/10.1175/JTECH-D-13-00174.1>, 2014.
- 560 Van Boxel, J. H. et al.: Numerical model for the fall speed of rain drops in a rain fall simulator, in: Workshop on wind and water erosion, pp. 77–85, 1997.
- Wang, M., Zhao, K., Pan, Y., and Xue, M.: Evaluation of Simulated Drop Size Distributions and Microphysical Processes Using Polarimetric Radar Observations for Landfalling Typhoon Matmo (2014), *Journal of Geophysical Research: Atmospheres*, 125, e2019JD031527, <https://doi.org/10.1029/2019JD031527>, 2020.
- 565 Wang, M., Zhao, K., Chen, G., Wang, M., Zhou, B., Huang, H., Hu, D., Lee, W.-C., and Hu, H.: Drop Size Distribution Characteristics of Seven Typhoons in China, *Journal of Geophysical Research: Atmospheres*, 123, 6529–6548, <https://doi.org/https://doi.org/10.1029/2017JD027950>, 2018.