

Toward quantifying turbulent vertical airflow and sensible heat flux in tall forest canopies using fiber-optic distributed temperature sensing

5 Mohammad Abdoli¹, Karl Lapo^{1,2}, Johann Schneider¹, Johannes Olesch¹, Christoph K. Thomas^{1,2}

¹University of Bayreuth, Bayreuth, Germany

²Bayreuth Center of Ecology and Environmental Research, Bayreuth, Germany

Correspondence to: Mohammad Abdoli (Mohammad.Abdoli@uni-bayreuth.de)

10

Abstract. The paper presents a set of Fiber Optic Distributed Temperature Sensing (FODS) experiments to expand the existing microstructure approach for horizontal turbulent wind direction by adding measurements of turbulent vertical ~~wind speed and direction component~~, as well as turbulent sensible heat flux. We address the observational challenge to isolate and quantify the weaker vertical turbulent motions from the much stronger mean advective horizontal flow signals. In the first part of this study,

15

we test the ability of a cylindrical shroud to reduce the horizontal wind speed while keeping the vertical wind speed unaltered.

~~Shroud experiments were performed using two sonic anemometers and two pressure ports in an open experimental area over short grass, with one observing system located inside the cylindrical shroud, but without any fiber-optic (FO) cables. The flow statistics were compared across shroud configurations of different shapes, colors, rigidity, and porosity. The white insect screen shroud with the rigid~~ A white shroud with a rigid support structure and 0.6 m diameter was identified as the most promising

20

setup in which the correlation of flow properties between shrouded and ~~unshrouded reference~~ systems is maximized, ~~and the RMSE was significantly lower~~. The optimum shroud setup reduces the horizontal wind standard deviation by 35%, has a coefficient of determination of 0.972 for vertical wind standard deviations, and a RMSE of less than 0.018 ms⁻¹ when ~~comparing the shrouded compared to the unshrouded setup reference~~.

25

Spectral analysis showed a fixed ratio of spectral energy reduction in the low frequencies, e.g., ~~> 2 s < 0.5 Hz~~, for temperature and wind components, momentum, and sensible heat flux. Unlike low frequencies, the ratios decrease exponentially in the high frequencies, which means the shroud dampens the high-frequency eddies with a time scale < 6 s, considering both spectra and cospectra together. In the second part, the optimum shroud configuration was installed around a heated fiber-optic cable with attached microstructures in a forest to validate our findings, ~~but the analysis revealed a failure. While this setup failed~~ to isolate the magnitude and sign of the vertical wind perturbations from FODS. ~~However in the shrouded portion~~, concurrent observations from an unshrouded part of the FODS

30

sensor in the weak-wind subcanopy of the forest (12-17m above ground level) yielded physically meaningful measurements of the vertical motions ~~from associated with~~ coherent structures ~~with~~. These organized turbulent motions have distinct sweep and ejection phases. These strong flow signals allow for detecting the turbulent vertical airflow at least 60% of the time, and 71% when conditional sampling was applied. Comparison ~~with the~~ vertical wind perturbations against those from sonic anemometry ~~resulted in yielded~~ correlation coefficients of 0.35 and 0.36, which increased to 0.53 and 0.62 for conditional

35 sampling. ~~Evaluating the first~~This setup enabled computation of eddy covariance-based direct sensible heat ~~fluxes~~flux
estimates solely from FODS, which are reported here as a methodological and computational novelty. Comparing them against
those from ~~the classic~~ eddy covariance using sonic anemometry yielded an encouraging agreement in both magnitude and
temporal variability for selected periods. ~~This observational achievement is an important step toward developing a FODS-~~
~~based flux sensor capable of resolving heat flux continuously across spatial and temporal scales.~~

40 **1 Introduction**

Most fluids at sufficiently high Reynolds numbers feature a general flow patternpatterns combined with random motions called
"turbulence" (~~CORRSIN, 1961~~)(Corrsin, 1961). From a micrometeorological point of view, turbulence is the primary
mechanism for mixing energy and matter in the air, and its strength controls the coupling between the atmosphere and the
earth surface (Burgers, 1948; Tennekes et al., 1972). Understanding the nature of turbulent flow is essential for many
45 applications, such as the transfer and mixing of light, heat, water vapor, carbon dioxide, nutrients, and other substances, directly
affecting humans, animals, and the plant's quality of life. Although current theories well describe the transport and turbulent
mixing near the surface for sufficiently strong winds (Van de Wiel et al., 2012), under stable regimes, the atmospheric boundary
layer (ABL) turbulence does not obey well-known concepts, including the Monin-Obukhov similarity theory, the Kolmogorov
spectrum, and Taylor's hypothesis of frozen turbulence (Grachev et al., 2013; Sun et al., 2012)-(Sun et al., 2012; Grachev et
50 al., 2013; Cheng et al., 2017).

~~For weak wind conditions, turbulence is not exclusively governed by dynamic stability but is driven by a combination of non-~~
~~stationary processes, sub-mesoscale motions, local shear, and flow instabilities (Liang et al., 2014; Mahrt et al., 2013; Sun et~~
~~al., 2012). Intermittent turbulence or non-stationary conditions often violate assumptions made for scaling laws and statistical~~
~~approaches used in micrometeorology, including translation of temporal scales into length scales through applying the~~
55 ~~assumption of Taylor's frozen turbulence. Also, the ergodicity assumption cannot be applied to the single point measurements~~
~~in these conditions. The ergodicity assumption states that the time and space averages converge under stationary, horizontally~~
~~homogeneous conditions (Engelmann & Bernhofer, 2016). Several efforts have been made to analyze observations from~~
~~networks of sensors to elucidate intermittent processes such as meandering and within-canopy flow and heat transport (Anfossi~~
~~et al., 2005; C. K. Thomas, 2011). Despite some progress in the mentioned studies, the lack of spatial information sufficiently~~
60 ~~dense to resolve the process scales has hindered advancing the stable boundary layer's current physical interpretation.~~

~~Fiber Optic Distributed Temperature Sensing (FODS) was introduced as a powerful geophysical technique in the last few~~
~~years. This technique measures the temperature and its location along a fiber optic cable at a time resolution of a few seconds~~
~~and spatial resolution of tens of centimeters up to 20 kilometers in total length. It is capable of observing atmospheric flows~~
~~under physically poorly understood sub-meso motions (Pfister et al., 2021; C. K. Thomas et al., 2012). Distributed Temperature~~
65 ~~Sensing (DTS) technique utility in atmospheric measurement is not limited to measuring the distributed temperature of the air,~~

water, ice, snow, soil, and plant, but various applications such as measurement of soil moisture, humidity, shortwave radiation, and wind speed have been tested successfully (C. K. Thomas & Selker, 2021).

For weak-wind conditions, turbulence is not exclusively governed by dynamic stability but is driven by a combination of non-stationary processes, sub-mesoscale motions, local shear, and flow instabilities (Sun et al., 2012; Mahrt et al., 2013; Liang et al., 2014). Intermittent turbulence or non-stationary conditions often violate assumptions made for scaling laws and statistical approaches used in micrometeorology, including translation of temporal scales into length scales through applying the assumption of Taylor's frozen turbulence. Also, the ergodicity assumption cannot be applied to the single-point measurements in these conditions. The ergodicity assumption states that the time and space averages converge under stationary, horizontally homogeneous conditions (Engelmann and Bernhofer, 2016). Several efforts have been made to analyze observations from networks of sensors to elucidate intermittent processes such as meandering and within-canopy flow and heat transport (Anfossi et al., 2005; Thomas, 2011). Despite some progress in the mentioned studies, the lack of spatial information sufficiently dense to resolve the process scales has hindered advancing the stable boundary layer's current physical interpretation.

Fiber-Optic Distributed Temperature Sensing (FODS) was introduced as a powerful geophysical technique in the last few years. This technique measures the temperature along a fiber-optic cable at a time resolution of a few seconds and spatial resolution of tens of centimeters up to 20 kilometers in total length (Thomas and Selker, 2021). It is capable of observing atmospheric flows under physically poorly understood sub-meso motions (Thomas et al., 2012; Pfister et al., 2021). Distributed Temperature Sensing (DTS) technique utility in atmospheric measurement is not limited to measuring the distributed temperature of the air, water, ice, snow, soil, and plant, but various applications such as measurement of evapotranspiration, soil moisture, humidity, shortwave radiation, and wind speed have been tested successfully (Predosa, 2016; Schilperoort et al., 2020; Thomas and Selker, 2021).

Among the most recent development of this technique, (Lapo et al., 2020a) Lapo et al. (2020) introduced an approach using a FO cable with a cone-shape microstructure printed on it, causing which causes directional differences in the convective heat loss from the FO cable to the air. When heated coned fibers are placed in the main flow direction, the fibers on which the cones are aligned with the flow cool more than those with opposing alignment, enabling computation of wind direction. The beforementioned study was conducted in idealized wind tunnel experiments. Very recently, (Freundorfer et al., 2021) Freundorfer et al. (2021) deployed this approach for the first time during actual field observation. They presented three different methods of calculating turbulent horizontal wind directions from the FODS measurements, indicating the potential of this approach to reveal the wind direction spatial structures at scales of meters and tens of seconds. The last two studies aimed at building a fully three-dimensional, spatially resolving atmospheric flow sensor as an important step toward a spatially distributed flux sensor using the eddy covariance technique. Although measuring the horizontal wind speed and wind direction was examined successfully component was successful, the vertical wind component cannot could not be measured with existing approaches to complete the three-dimensional sensor functionality to date. Measuring the vertical wind component with the above-mentioned heated coned fibers approach is challenging as i) the magnitude of the vertical wind fluctuations is smaller than the combined signals of horizontal mean and turbulent flows, and also ii) the duration of the vertical events are too short,

100 which leads to vanishing sensitivity in the vertical-~~direction because of the finite response time of the FODS sensor~~. Isolating the vertical wind signal by filtering the horizontal wind is essential to capture the signals induced by the air's vertical movement. Having truly 3D spatially resolved observations would create a possibility to compute the momentum and sensible heat fluxes independently of the fundamental assumptions of ergodicity, stationarity, and homogeneity since the observations are taken simultaneously in both time and space domains. For example, it could be used to reveal the generating mechanism of the weak and intermittent turbulence where the conventional observation assumptions fail. A 3D spatially resolved observation could also explain the long-standing problem of counter-gradient flux caused by a poor choice of height in the measurement and perturbation time scale (~~Fritz et al., 2021~~; Vickers ~~&and~~ Thomas, 2014; ~~Fritz et al., 2021~~).

We ~~addressed~~aimed to overcome these conceptual and observational challenges by conducting a series of experiments. The first part of this study was conducted ~~in the open experimental area of Bayreuth University's Ecological Botanical Garden (EBG)~~. We ~~isolated~~above an open grassland and used only classic sonic anemometry without FODS to identify an optimal experimental configuration for subsequent testing in the second part with the use of FODS. We ~~diminished~~ the horizontal wind speed using different cylindrical shrouds and compared the flow characteristics inside and outside of the shroud by placing a sonic anemometer inside and outside of the shroud to investigate (I) which are the optimal physical properties of the shroud (aspect ratio, shape, porosity, rigidity, and color) to diminish the horizontal wind disturbances adequately while leaving the vertical wind perturbations largely unaffected? And (II) how is the spectra of turbulent fluctuations affected by shroud in high and low frequencies compared to an unshrouded setup? In the second part of this study, ~~the Waldstein-Weidenbrunnena~~ forest environment ~~is~~was used to investigate the applicability of the fiber-optic approach to measuring vertical wind components. We considered forests an ideal test environment since the mixing-layer type flow characterized by coherent structures with strong vertical motions, the ~~well-documented~~-sweep and ejection phases, in the subcanopy ~~allows having a relatively~~, allow ~~for sustained~~ stronger vertical wind speed compared to horizontal (~~C. Thomas & Foken, 2007~~); (~~Brunet, 2020~~). We deployed a shroud based on the results of the first part around heated coned FO cables in the forest area to see: (III) can vertical wind direction and wind speed be resolved by affixing a shroud around actively heated coned FO cables? And can this setup be used to compute the sensible heat flux purely based on FODS? If yes, how is the quality of the derived component based on point measurement?

125 2 Material and methods

2.1. ShroudPart 1: shroud experiment at Ecological Botanical Garden (EBG)over grassland

The first part of the measurements is conducted between April 2020 and June 2020 at the Ecological Botanical Garden (EBG) at the University of Bayreuth. The experimental area was covered with short grass (5-15 cm) surrounded by mixed types of trees with an approximate height of 15 meters from north, northeast, and southeast and a small artificial pond on the west side (~~Pfister et al., 2017~~). Based on the synoptic weather station data close to the experiment location from 2014 to 2018, the dominant wind direction for spring and summer is westerly and southwesterly, with a maximum wind speed of 8-12 ms⁻¹. Two

upside-down sonic anemometers (Model USA-1, Metek GmbH, Elmshorn, Germany) at 1.5 m height (middle of the shroud) and two quad disk pressure ports attached to a nano resolution digital barometer (Model 745-16B, Paroscientific, Inc.) at 1.2 m above ground ~~were set up; one. One set of each sensor~~ sensors was placed inside the cylindrical shroud (Fig. 1). The spacing between two sets of sensors was 1.5 m to reduce the potential airflow distortion of the shrouded setup on unshrouded. White and gray insect screens with a mesh size of approximately 0.5 and 0.1 mm, respectively, are used ~~around one system.~~ The supporting structures of the shroud and sonic anemometers are oriented along the north-west direction, perpendicular to dominant wind speed, to reduce the structure-induced systematic disturbances. A metal wire mesh with a 10 mm × 10 mm grid size is used underneath the shroud to enhance its rigidity against distortion during stronger winds.

We iterated multiple should configurations in different diameters (1 and 0.6 m), gray and white colors, small and large pore size should, and a shroud with and without supporting metal mesh underneath the shroud. The reasoning line for each selection is (I) Diameter: The task was to design a shroud to eliminate the horizontal flow while keeping the vertical flow perturbation intact. We hypothesized increasing the shroud diameter could increase the horizontal flow disturbances inside the shroud since it offers a larger pathway for airflow. On the other hand, decreasing the shroud diameter and placing it close to the sonic anemometer could cause systematic turbulence created with the shroud itself. (II) Length: We determined the length of the shroud over the grass to be long enough to accommodate the typical length scales of the vertical turbulent flow, keep the sensors away from shroud structure-induced flow disturbances, and be feasible to install, given the available hardware and facilities. (III) Color: We used the gray shroud first. Initial results showed substantial heating of the shroud material during daytime conditions inducing strong upward directed (free-) convective heat transfer and thus distorting flow statistics inside the shroud. In response, we changed the shroud's color to white to avoid possible radiative heating errors, together with increasing the pore size of the shroud. (IV) Mesh size: The initial mesh size was selected based on the previous experiments and then improved based on the initial results. (V) Rigidity: The very first setup of the shroud was designed without supporting mesh and was just a tensioned shroud with two rings at the top and bottom. We observed that the shroud gets very unstable during wind gusts and induces uninvited turbulence. We decided to make the shroud rigid enough to avoid this problem.

The sonic anemometer and static pressure data recorded at sampling frequencies of 20 Hz and ~~a~~ perturbation and averaging time ~~scales~~ scales of 10 minutes were used to compute sensible heat and momentum fluxes and compare wind components inside and outside the shroud. In this part of the study, no ~~Fiber-Optic Distributed Sensing (FODS)~~ FODS techniques were used, and the primary objective was to determine the best configuration of the shroud to meet the study's objectives. Three sets of shroud experiments at EBG were compared in this study with setup1 standing for gray, dense, 1 m diameter shroud, setup2 for gray, dense 60 cm diameter shroud, and setup3 for white, not dense60 cm diameter shroud.

2.2. ShroudPart 2: shroud experiment at Waldstein in a forest

The second part of the study evaluated the utility of the shroud approach at the Waldstein-Weidenbrunnen long-term ecosystem flux site between October ~~2020~~ and November 2020 as part of the LOEWE20 (Large Eddy Observatory ~~Walsstein~~ Waldstein Experiment 2020) experiment. The Waldstein is a forested site in Fichtelgebirge Mountains located within "Lehstenbach"

165 catchment. This forest was mainly covered by Norway spruce (*Picea abies*), characterized by variable tree heights and
densities. Subcanopy vegetation is moderately dense with a cumulative plant area index of $0.7 \text{ m}^2 \text{ m}^{-2}$, featuring shrubs with a
height of $\leq 1 \text{ m}$. The plant area index (PAI) is $5.6 \pm 2.1 \text{ m}^2 \text{ m}^{-2}$ for the overstory trees and $3.5 \text{ m}^2 \text{ m}^{-2}$ for the understory. In the
Waldstein site, westerly and southeasterly wind with a wind speed range of 2 to 5 ms^{-1} dominates in the overstory; in the
170 subcanopy, it is northerly and southwesterly with a range of 1 to 2 ms^{-1} (Foken et al., 2017). The experiment period was mostly
dominated by anticyclonic conditions in both 500 and 950 hPa isobaric levels, with southwesterly winds being partly wet and
partly dry. The shroud was installed at the main tower around a quartet FO array containing two pairs of parallel coned and
unconed FO cables extending from the ground to the top canopy at 34 m height (Fig. 2). The center of the shroud was placed
at 4 m above ground, having the same diameter as the first part of the study, but its lower boundary was located 32.75 m above
ground. Two high-resolution DTS instruments (Model 5 km Ultima, Silixa, London, UK) used to observe the continuous
175 temperature with a spatial resolution of 0.127 m averaged over 3 seconds . The DTS device connected to one of four $50\text{-}\mu\text{m}$
multimode bend-insensitive cores; inside a high-resistance stainless steel sheath filled with gel (inner tube diameter = 1.06
 mm , outer diameter = 1.32 mm , Model C-Tube, Solifos AG, Switzerland, resistance = $1.8 \Omega \text{ m}^{-1}$). The cones are made from
polyethylene with a diameter and height of 12 mm , respectively, and 2 cm of spacing optimized by (Lapo et al., 2020b), spaced
at 2 cm along the fiber-optic cable (Lapo et al., 2020). Two warm and cold solid-phase calibration baths with a constant
180 temperature developed by Thomas et al. (2022) were deployed at the beginning and end of FO arrays to be used as a calibration
reference (Fig. 2). A sensor package was set outside the shroud close to the center of the cylinder with a sonic anemometer
(Model CSAT3, Campbell Scientific Inc., Logan, UT, USA); a quad disk static pressure transducer (Model 745-16B,
Paroscientific, Inc.), and an open path infrared $\text{CO}_2/\text{H}_2\text{O}$ gas analyzer (Licor 7500, LI-COR Biosciences, USA). For
comparison reasons, the eddy covariance data with a sampling frequency of 10Hz at 36m height and the FODS data of quartet
185 array from the turbulence tower located approximately 70 meters away from the main tower were used. See Foken et al.
(2021) for more details on turbulence tower specification. The quartet fiber configuration at the turbulence tower is the same
as the main tower extending from the ground to 34m height. It should be noted that all of the eddy covariance data in this study
were sampled at 20Hz , with the exception of the permanent eddy covariance station at the turbulence tower, which sampled at
 10Hz . All of the eddy covariance systems in this study use the same eddy covariance data processing and flux computation
190 routine described in Thomas et al. (2009, see Appendix A).

2.3 ~~Change point~~ Change point detection using Pettitt test

In time series analysis, change point detection is a technique for detecting abrupt changes in data. We applied this test to
determine the change point of the ratio of the spectral energy in the shrouded setup to unshrouded. The deployed test was
proposed by Pettitt (1979) and is a non-parametric test for evaluating single abrupt changes, ~~which applied to the ratio of the~~
195 ~~spectral energy in the shrouded setup to unshrouded.~~ The change point computed as follows:

The first step is to calculate U_K statistics using the following Eq. (1)

$$U_k = 2 \sum_{i=0}^n m_i - k(n + 1) \quad (1)$$

Where m_i represents the rank of the i th 1-D data when the values are arranged in ascending order, and k takes values from 1, 2, ..., n , and in the second step, the statistical change point test defines as Eq. (2)

$$K = \max_{1 \leq k < n} |U_k| \quad (2)$$

A change-point occurs in a series when U_k reaches its maximum value of K . To test the significance of the detected change points, the critical value (K_a) obtained with Eq. (3)

$$K_a = \left[\frac{-1n\alpha(n^3 + n^2)}{6} \right]^{\frac{1}{2}} \quad (3)$$

Where n represents the number of observations and α is the significance level determining the critical value (Zarenistanak et al., 2014).

2.4 FODS calibration

DTS measurements were done in a double-ended configuration fashion using two channels of each DTS device (van de Giesen et al., 2012). The start and end of each fiber were connected to two different channels, recording the temperature of the fiber by alternating every 3 ~~seconds~~ between two channels. Each channel was saved separately and aggregated to a single dataset with a time resolution of 6 ~~seconds~~ during the data post-processing. The coned fibers were heated electrically using the Heat Pulse Unit (HPU) system (Model Heat Pulse System, Silixa, London, United Kingdom) and applied a constant electric current of 4 ~~W~~ Wm^{-1} to the stainless-steel sheath. Observed Stokes and anti-Stokes intensities were converted into fiber temperature using the pyfocs code by ~~Lapo & Freundorfer (2020)~~ [Lapo & Freundorfer \(2020\)](#). This code uses the matrix inversion method using constant temperature sections wrapped around warm and cold solid-state reference baths. The user adjusts the bath's temperature to be set in differentiable cold and warm temperatures based on the ambient temperature range. The reference sections with a length of at least 1.8 m equal to 14 individual measurement points along the fiber were used. Finally, the artifact-free calibrated FODS temperature was used to further analysis in this study. FODS data usually contains artifacts related to the heat exchange between the FO cable and heat sinks or sources other than air, such as precipitation, solar radiation, holders, and support structures ~~(Lapo et al., 2022)~~.

2.5 Shroud-microstructure approach for determining wind direction using actively heated coned FO cables inside a cylindrical shroud

Actively heating the FO cables and maintaining them warmer than the atmosphere makes them subject to cooling through convective heat flux based on wind speed magnitude and turbulent kinetic energy. Cone-shape microstructures printed on FO cable cause directional differences in the convective heat loss from the FO cable to the air (shown in Fig. 3, right). When heated coned fibers are placed in the main flow direction, the fibers in which the cones are aligned with wind flow cool more than in opposite alignment (Fig. 3 left). The microstructure approach uses these directional temperature differences to

determine the wind direction. ~~This method was developed and tested in the wind tunnel with Lapo et al. (2020)~~ This method was developed and tested in the wind tunnel with Lapo et al. (2020). Subsequently, ~~Freundorfer et al. (2021)~~ Freundorfer et al. (2021) successfully deployed this method for measuring horizontal wind direction in the field experiment. This study used the same method to measure the wind direction, but in a vertical direction using a cylindrical shroud around coned fibers.

2.6 Coherent structures detection using the quadrant analysis method

Coherent structures in tree canopies are defined as spatially coherent motions generated with vertical wind shear, typically associated with strong vertical motions. Every coherent structure event can be divided into upward and downward motions called ejection and sweep phases (~~C. K. Thomas et al., 2017~~) (Thomas et al., 2017). This study uses coherent structure events to compare the FODS vertical wind signals against observation. The Quadrant analysis method, in combination with hyperbolic thresholding, was used to determine the coherent structures. This method uses a scatter plot of two variables (u' as horizontal and w' vertical) wind speed perturbation ~~in this study~~ in a two-dimensional plane in which the coordinate of each flow variable determines the quadrant defined as $Q1 (u' > 0, w' > 0)$, $Q2 (u' < 0, w' > 0)$, $Q3 (u' < 0, w' < 0)$ and $Q4 (u' > 0, w' < 0)$. ~~The hyperbolic~~ $L = u'w' / (\sigma_u \sigma_w)$. The positive direction of w is upward and if the azimuth angle of the measurement device is zero, the positive direction of u is eastward. The hyperbolic threshold also defines as $L = u'w' / (\sigma_u \sigma_w)^{-1}$ where σ_u and σ_w are horizontal and vertical wind speed standard deviation which applied to select the events exceeding the specific hole size (~~C. Thomas & Foken, 2007~~). ~~The 20Hz data of the sonic anemometer placed at 4 m agl~~ (Thomas and Foken, 2007). ~~The 20Hz data of the sonic anemometer placed at 4 m above ground level~~ at the main tower (as described in section 2.1.2) was used to detect the coherent structure. The outliers were removed from sonic anemometer data, dropping the range of the data outer of $\pm 6\sigma$, assuming a normal distribution. Based on the flow statistic in the Waldstein forest, the perturbation time scale of 10 minutes was used to compute turbulence quantities. ~~The quadrant analysis was done without applying coordinate rotation, but the~~ ~~The~~ 3D coordinate rotation was applied to compute the fluxes ~~and quadrant analysis~~ (Wilczak et al., 2001). ~~Since the horizontal and vertical wind is decorrelated, the coherent structure events located in $Q2$ having a $|L| > 0.5$ were defined as ejection phase, and the events located in $Q4$ having $|L| > 0.5$ were defined as sweeps phase.~~ Since the horizontal and vertical wind is decorrelated, the coherent structure events located in $Q2$ having a $|L| > 0.5$ were defined as ejection phase, and the events located in $Q4$ having $|L| > 0.5$ were defined as sweeps phase (Thomas and Foken, 2007).

2.7 Distributed sensible heat flux using FODS

The sensible heat flux from FODS ($\overline{w'^T'}$) is the product of instantaneous (e.g., 6 s) vertical wind perturbation (w') and 6 s temperature perturbation (T') which are defined as $\overline{w'^T'} = \overline{w' - \bar{w}} \cdot \overline{T' - \bar{T}}$ and $\overline{T'} = \overline{T - \bar{T}}$, \bar{w} being the 6 s vertical wind speed ~~which~~ calculated using the regression of temperature differences between the upward and downward-pointing coned fibers and vertical wind speed of the sonic anemometer. \bar{w} is the mean of the vertical wind speed over both perturbation time scale (10 minutes) and length

along the fiber (LAF). Similarly, $\overline{\overline{\langle T \rangle}}$ is the mean of air temperature, observed with bare unheated fibers over both perturbation time scale (10 minutes) and LAF. ~~We use $\overline{w'T'}$~~ We show the averaged instantaneous variables inside $\langle \rangle$, spatially averaged variables with $\langle \rangle$, and averaged over time with an overbar. Sensible heat flux from FODS ($\langle w' \rangle \langle T' \rangle$) is without averaging overbar since the perturbations from FODS are spatiotemporal averaged perturbations mostly affected by coherent structures, while in the case of eddy covariance fluxes, we use $\overline{w'T'}$ since the sonic anemometer perturbations have an inherent physical averaging by its response time. w' and T_s' are vertical wind and sonic temperature perturbations with the original sampling frequency of 20Hz for the main tower and 10Hz for the turbulence tower.

265 3 Results and discussion

~~This study was divided into two parts; the first concluded at Bayreuth EBG, optimizing the shroud configuration to filter horizontal wind speed while keeping vertical wind unaltered. During the second part, the most promising shroud configuration from the first part was deployed together with FODS in the Waldstein forest subcanopy to pursue the corresponding research objectives. In the following subtitles, the results of each part of the experiment are described.~~

270 3.1 Shroud experiment over ~~grass (EBG)~~grassland

During the shroud experiment at EBG, three experimental setups were tested to compare flow statistics between shrouded and unshrouded sensors. ~~The shroud specifications are shown in the first column of Table 1. (Table 1).~~ At first glance, all of the shroud configurations appear to significantly reduce the vertical wind standard deviation while keeping a good correspondence between σ_w inside and outside the shroud, decreasing during the night and increasing during day times (Fig. 4a,b). ~~Also, the, and c). The~~ scatter plot between the shrouded and unshrouded σ_w shown in Fig 4. d, e, and f confirm a high linear relationship (e.g., $R^2 > 0.9$) ~~between shrouded and unshrouded σ_w during the night and day times.~~ The coefficient of determination (R^2) in setups 2 and 3 with 0.975 and 0.973976 reveals that the shroud with 60 cm diameter reduces the vertical wind standard deviation less than the 1m diameter shroud. Also, setup 3 is less scattered, where the 95% prediction interval is narrower compared to other setups. A prediction interval is a type of confidence that predicts the value of a new observation based on your existing model (Neter et al., 1996). The Root Mean Square Error (RMSE) shown in Table 1 shows the lowest error of 0.04201 ms^{-1} for daytime and 0.04702 ms^{-1} for nighttime for setup 3. Note that the unrotated wind statistics are used for comparisons since the reduced horizontal wind speed inside the shroud caused unphysical results when applying coordinate rotation.

Besides vertical wind standard deviation, the ~~scalar~~total wind speed ($U = \sqrt{u^2 + v^2 + w^2}$) and horizontal wind speed ($U_H = \sqrt{u^2 + v^2}$), with u, v being horizontal and w vertical wind speed, added to the ~~comparison by computing the reduction percentage, coefficient of determination (R^2), and root means square error (RMSE) shown in Table 1 for the three setups. As shown in the table, setups (Table 1). Setups 1 and 2 reduce the scalar U and horizontal wind speed U_H by 72 and 74%, which~~

induces a 30 and 34% reduction in the vertical wind standard deviation. While in setup 3, the reduction is 35% for ~~scalar total~~ and horizontal wind speed and ~~23.25~~25% for vertical wind standard deviation. In terms of coefficient of determination and RMSE, the third setup has higher R^2 while having lower RMSE than the other setups. However, using a 60 cm diameter dense shroud reduces horizontal and vertical wind speed (w) more than the third setup but reduces the goodness of fit between shrouded and unshrouded wind components significantly.

Spectral analysis was performed to compare the shrouded and unshrouded instruments for the third setup to investigate the frequency-specific impacts. Fig. 5a and b show that the cylindrical shroud around a sonic anemometer reduces the energy in the integral scales (low frequencies) in both spectra and cospectra. In the inertial subrange, the energy decay slope for both shrouded and unshrouded setups remains mostly $-5/3$ for spectra and $-7/3$ for cospectra which is ~~based on~~consistent with Kolmogorov(1941)-Kolmogorov (1941). It confirms that the shroud has a minimal effect on the isotropic homogenous eddies in the inertial sub-range. The significant effect of the shroud can be seen in the high frequencies closer toward the dissipation scales, where the shrouded and unshrouded spectra and cospectra deviate from each other significantly (Fig 5 c,d). The ratios decrease exponentially for high frequencies, which means the shroud dampens the high-frequency eddies extremely. There is a fixed ratio of spectral energy reduction in the low frequencies for temperature and wind components, momentum, and sensible heat flux in both spectral densities. The Pettit test detected the time scale of the change point at which the spectral energy decreases abruptly. The change points are shown in Fig.5 (c and d), with vertical dotted lines for each spectrum varying approximately 2 and 6 ~~seconds~~s. It means the eddies smaller than 6 ~~seconds~~s are highly influenced by the shroud and should be considered in further analysis.

~~The results of the shroud experiment at EBG indicated that the third shroud setup is the most promising setup having the slightest disturbance on vertical wind within the shroud while reducing the horizontal wind speed by 35%. Additionally, the spectral analysis revealed that installing the shroud significantly dampens the high frequency eddies (less than 6 seconds), which should be noted in future deployments in the forested environment.~~

310 **3.2 Shroud experiment in the forest (Waldstein)**

The third shroud setup ~~from the grassland testing~~ was ~~identified as the most promising and subsequently~~ deployed during the LOEWE20 experiment ~~in the forest~~ around coned FO cables to evaluate if the vertical wind ~~speed and direction component~~ could be observed using a combination of the shroud setup and heated coned fibers. ~~In order~~We made one modification to adjust to the forest environment dominated the shroud configuration by sweep ejection cycles of coherent structures with larger spatial scales, increasing the height/length of the shroud was increased from 1.5 m ~~in the first part of the study at at~~ EBG to 3 m ~~for the forest environment to account for the minimum resolvable scale with fiber-optic cable and DTS device used in this experiment is 30 s (Freundorfer et al. 2021). In the preparatory phase of the experiment, our analyses yielded a mean magnitude of the vertical wind speed perturbations of 0.1 ms^{-1} for the Waldstein subcanopy site; hence a shroud length of at least $30 \text{ s} * 0.1 \text{ ms}^{-1} = 3 \text{ m}$ seemed optimal to sample the passing eddies by FODS. The turbulence spectrum in rough forest canopies is dominated by organized turbulent motions resulting in more low-frequency turbulence compared to short-vegetated grasslands;~~

hence the integral length scale is larger. This adjustment seemed necessary to capture to main energy-containing eddies. Fig. 6a shows a series of reddish and bluish strips of ΔT within both boxes, most likely induced by stronger updrafts and downdrafts, respectively. The depicted structures outside the shroud are clear and more organized than within the shroud, and seem to reflect the vertical air movements better than inside the shroud. Fig. 6b magnifies the inside of the shroud, adding the 6s averaged instantaneous vertical wind speed to give an idea of how ΔT reacts/responds to vertical wind speed changes in which change once there is no apparent correlation between the two. The correlation coefficient between ΔT and w (ρ_w) in the main tower is 0.02402 inside the shroud but increases to 0.35 outside, demonstrating the substantial increase in correlation between ΔT and w outside the shroud, where the horizontal wind speed in the subcanopy is at its lowest. The ρ_w coefficient further improved when the data subsampled based on rolling 5-window correlations between ΔT and w (ρ_{roll}) more than 0.8, eliminating/increasing to 0.53 at the main tower outside the shroud and 0.62 at the turbulence tower. However, the subsampling significantly improved the correlation outside the shroud for both towers, but no improvements were made inside the shroud, as shown in Fig. 7a. The ΔT within the shroud does not show a good agreement with vertical wind speed, and the results show the failure of the shroud configurations used in the forest experiment to achieve the research objectives. Potential reasons for the failure of this method can be summarized as follows: (i) The 3m3 m long shroud might act differently than the 1.5m shroud to suppress the eddies that are passing through the shroud (ii) The percentage of the shroud's horizontal wind reduction is not large enough to keep the horizontal wind speed below the speed observed with coned fibers inside the shroud. (iii) strong vertical motions resulting from passing coherent structures, which are expected to induce an explicit ΔT at greater heights, may slow down during penetrating when approaching the ground from above the canopy in the sweep phases and do not accelerate enough at the shroud height during the ejection phase. The results/findings of Thomas and Foken (2007) studying flux contributions of coherent structures at this site support this argument since the Thomas and Foken (2007), who studied flux contributions of coherent structures at this site, support this argument because sensible heat fluxes are well coupled within the canopy up to a height of 0.72h, h being the canopy but in, with a relative contribution of nearly 70%, whereas at lower heights (e.g., 0.29h), the correlation between contribution decreases to approximately 40% due to weakly coupled top and subcanopy is weak.

The analysis of the optimum shroud configuration at Waldstein forest failed to observe the sign and magnitude of the vertical wind perturbation using FODS; however, conducting this experiment coincided with an unexpected discovery that the heated coned fibers could observe the coherent structures events in the weak-wind subcanopy outside the shroud within the heights where the minimum horizontal wind speed occurs in the subcanopy. See Fig. A1 in the appendix for the distributed wind speed profile calculated with FODS for the period of the data used in this study. Fig. 6c shows and 6d show the mentioned height range together with the sweep and ejection phases, illustrating a good agreement between the positive ΔT with ejection phases and negative ΔT with the sweep phases. The red/magenta and blue arrows follow the reddish and blueish ΔT s, where higher vertical wind speeds are accompanied by solid features of reddish or blueish stripes, which indicates the duration of coherent structures, while the color intensity might represent the vertical wind speed of motions. In contrast, conditional sampling does not improve the correlation between ΔT and w inside the shroud (Fig. 7a). Note that the sonic anemometer data at 4m height

355 was used to compute the correlation coefficients with a section of FODS data at the main tower at 12 to 17m ~~height~~, adding two sources of uncertainty to the correlation. First, there may be a time lag between two measurements because of height differences, and second, the two heights may not be well coupled, so strong vertical movements of air at 12-17m height might dissipate or weaken at 4 meters. The mentioned limitation at the main tower is expected to be less at the turbulence tower since the sonic anemometer is placed at 36 m above the canopy level, where there is a robust sensible flux coupling between these

360 two heights based on ~~Thomas and Foken (2007)~~.[Thomas and Foken \(2007\)](#). The scatter plot between ΔT and w shown in Fig. 7b and c confirms a slight positive correlation between ΔT and w with $\rho_w = 0.35$ and 0.36 at the main and turbulence tower for the whole selected period shown in yellow, respectively. This correlation improves under certain situations: for instance, the correlation coefficient increases to 0.53 and 0.62 when conditional subsampling is used based on the rolling 5-window correlation of ΔT and w (ρ_{roll}) greater than 0.8 (shown in black in Fig. 7b and c). The best fit for the median of ensemble w

365 over ΔT is the quadratic function for both towers with an R^2 of 0.78 and 0.93 and an RMSE of ~~0.01702~~ and 0.14 ms^{-1} for the main and turbulence tower. The quadratic relation between w and ΔT is in line with similar equations describing the relation between convective heat loss from the fiber- optic cable and horizontal wind speed, including ~~Sayde et al. (2015) and van Ramshorst et al. (2020)~~[Sayde et al. \(2015\) and van Ramshorst et al. \(2020\)](#). The linear model is also the second best fit model to the median points of the ensemble vertical wind speeds over the ΔT with an R^2 of 0.70 and 0.88 and RMSE of ~~0.04404~~ and

370 ~~0.18418~~ for main and turbulence towers (Table 3). The height of the error bar in Fig. 7a and b remains almost the same at different ΔT , but the scatter plots are more scattered in the low ΔT . The horizontal wind speed was found as the main reason for deteriorating the ΔT signal, where the lowest horizontal wind speed shows smaller error bars (Fig. 8a and b). However, the horizontal wind speed of less than 0.3 ms^{-1} at the subcanopy includes a few percent of the data, which was insufficient to separate and analyze the relationships within these periods.

375 Following the comparison between ΔT and w for a selected 7-hour data for both main and turbulence towers, we evaluated the dataset for the percentage of correctly detected vertical wind direction, which is calculated as a fraction of the number of vertical wind directions that were successfully observed using FODS to the number of chosen data (F). A section of 5 m length of FODS ΔT from 12 to 17 m ~~agl above ground level~~ was selected and compared against sonic anemometer vertical wind direction to compute the F . Table 3 shows F for whole data and when the 5-window rolling correlation (ρ_{roll}) between ΔT and

380 w is larger than 0.8 . The analyzed data shows 60 and 63% F at the main and turbulence towers, respectively, which increases to 71 and 67% for $\rho_{roll} > 0.8$. Since we know the sign of the distributed vertical wind perturbation with a defined F , we can compute the magnitude of the distributed vertical wind speed perturbations from the relationship between vertical wind speed and ΔT with a known correlation coefficient and have distributed air temperature perturbations directly observed from the unheated FO cable across the entire canopy; we computed the ~~first ever~~ distributed sensible heat fluxes (~~$\overline{w'^2 T'^2}$~~) (~~$\langle w' \rangle \langle T' \rangle$~~)

385 solely based on FODS using the linear and quadratic regression between w and ΔT in Fig. 7b and c to compute the vertical wind perturbation (~~$\overline{w'^2}$~~) (~~$\langle w' \rangle$~~) for the unshrouded section. The distributed heat flux in Fig.9 ~~and 10~~ is based on a linear regression between ~~\overline{w}~~ and ΔT at the turbulence and main towers, which yields an RMSE of ~~0.0009001~~ and 0.01 Kms^{-1} in comparison with the sonic anemometer's ~~sensiblebuoyancy~~ heat flux (~~$\overline{w'^2 T'^2}$~~) (~~$\overline{w' T'_s}$~~). However, the RMSE is lower at the main

390 tower, but ~~there is a minor correlation of 0.035 between the~~ computed flux ~~and is independent~~ of observation ~~with correlation~~
of 0.04, whereas the correlation is 0.26 at the turbulence tower. ~~The same flux computation as Fig. 9 and 10 is computed using~~
~~quadratic regression shown in the appendix (Fig. A2, A3).~~ Despite the many assumptions creating uncertainty in computing
distributed sensible heat flux, the range and temporal dynamics of the computed fluxes across techniques match well for this
selected period. We observe two areas with distinct differences (Fig. ~~9a and 10a~~9): (i) the area near to ground up to about 7 m
where the fluxes are negative and downward. Interestingly, the features are more pronounced between 05:00 and 06:00 when
395 the horizontal wind is weaker, (ii) the height between 9 and 20 m, where the fluxes are often positive and upward, and the
features of updrafts are discernible most of the time since the horizontal wind speed at the mentioned height remains below
the threshold ($\sim 0.3530 \text{ ms}^{-1}$ ~~based on~~ Fig. 8a). The comparison also confirms that the computed sensible heat fluxes are in the
range of ~~observation the estimates from classic eddy covariance using sonic anemometry~~, but still, ~~there are overestimation and~~
~~underestimation at the method has~~ some ~~periods~~ bias in heat flux with RMSE of 0.01 and 0.0009 Kms^{-1} for turbulence and main
400 ~~tower respectively~~ (Fig. ~~9b and 10b~~10). As discussed in section 2.7, the fluxes shown as $w'T' < w' > < T' >$ and $\overline{w'T'w'T'_s}$
in this study are ~~inherently not expected to be identical and we don't expect them to be compared precisely. Nonetheless, it is~~
~~the~~ ~~as they represent different parts of the forest canopy volume. This first-ever trial to compute a presentation of~~ spatially
distributed sensible heat ~~flux~~ fluxes using FODS solely ~~which reinforces the utility of the microstructure approach's~~
~~potential approach~~ to ~~directly~~ observe vertical wind ~~direction and wind speed component~~ with higher accuracy.

405 4 Conclusion

This study examined the potential of a physical shroud constructed around heated and unheated fiber-optic cables to overcome
the limitations of the microstructure approach caused by the much stronger horizontal wind speed to observe distributed vertical
wind ~~speed and direction component~~ from FODS. We arrive at the following conclusions:

- I. Comparison between different shrouds in shape, color, rigidity, and porosity suggested that the white shroud with a
410 0.60 m diameter is the optimum shroud suitable for filtering the horizontal wind speed by 35% while having minimal
effect on vertical wind speed.
- II. The spectral analysis between shrouded and unshrouded ~~setup setups~~ showed a significant energy reduction
dissipation range. This reduction is minor in the inertial subrange, and both shrouded and unshrouded spectra obey
the energy decay law. The spectra ratio between shrouded and unshrouded setup revealed that the eddies smaller than
415 6 ~~seconds~~ are extremely damped within the shroud.
- III. Validating the promising shroud setup by adding heated coned fiber inside showed that the shroud fails to keep the
vertical wind signal. This failure could be because (i) the shroud ~~doesn't~~ does not reduce the horizontal wind speed
below the threshold that the coned fibers can sense the signal. (ii) The shroud increased length to ~~3m~~ 3 m changes the
behavior of the shroud against the eddies in comparison with a 1.5m ~~shroud~~ and causes suppression of the eddies that

420 are dominant at the shroud height. (iii) The ~~Shroudshroud~~ installation height is not dominant with the same strong
coherent structures as the comparison section (12-17 m). ~~In other words, the canopy is not fully coupled with the~~
~~lower height of the canopy.~~

425 IV. In contrast, evaluation of FODS observations from unshrouded paired coned and heated and unheated FO cables
revealed that there is a height range in subcanopy (12-17 m) where the ΔT from coned fibers show good agreement
to sonic anemometer observations. This agreement is more significant during the vertical air movement of coherent
structures (e.g., sweep and ejection phases). Within the mentioned height range, the heated coned fiber is capable of
detecting the vertical wind direction at least 60% of the time. The vertical wind speed also has a correlation of 0.35
with the temperature difference between up and down-pointing fibers, which ~~improvers~~improves up to 0.62 with
conditionally sampling.

430 V. The distributed sensible heat flux was computed using the linear and quadratic regression of ΔT and w . Nonetheless,
the distributed sensible heat flux seems within the plausible range of the measured fluxes with eddy covariance but
still needs improvement. The spatial structure of the distributed sensible heat flux shows explicit information about
flux distribution along with the canopy height and changing the sign of the flux at about 7m height. This study could
be followed with further improvements by adjusting the cone shape and size to increase the correlation of ΔT and
435 vertical wind direction and wind speed. Additionally, deploying DTS instruments with a high signal-to-noise ratio
(SNR) and a FO cable with a low response time would lower the uncertainty.

VI. This observational achievement is an important step toward developing a FODS-based flux sensor capable of
resolving heat flux continuously across spatial and temporal scales.

440 *Funding.* This research was funded by the European Research Council (ERC) under the European Union's Horizon 2020
research and innovation program (Grant Agreement 724629 DarkMix)

Author contributions. Conceptualization, M.A., K.L., C.K.T; methodology and manufacturing, M.A., C.K.T, K.L., J.S. and
J.O; field data collection, M.A., K.L., and J.S; validation, M.A.; formal analysis, M.A.; investigation, M.A., C.K.T.; data
445 administration, C.K.T, M.A.; funding acquisition, C.K.T. All authors have read and agreed to the published version of the
manuscript.

References

Anfossi, D., Oettl, D., Degrazia, G., ~~&and~~ Goulart, A. ~~(2005).~~; An analysis of sonic anemometer observations in low wind
speed conditions. *Boundary-Layer Meteorology; Meteorol.*, 114(1), 179–203. <https://doi.org/10.1007/s10546-004-1984-4>.
450 2005.

- Brunet, Y.: Turbulent Flow in Plant Canopies: Historical Perspective and Overview, *Boundary-Layer Meteorol.*, 177, 315–364, <https://doi.org/10.1007/S10546-020-00560-7>, 2020.
- Burgers, J. M.-(1948)-.: A Mathematical Model Illustrating the Theory of Turbulence. *Advances in Applied Mechanics, 1(C)*, *Adv. Appl. Mech.*, 1, 171–199. [https://doi.org/10.1016/S0065-2156\(08\)70100-5](https://doi.org/10.1016/S0065-2156(08)70100-5), 1948.
- 455 CORRSIN, S.-(1961). TURBULENT FLOW. *American Scientist*, 49(3), 300–325. <http://www.jstor.org/stable/27827853>
- Cheng, Y., Sayde, C., Li, Q., Basara, J., Selker, J., Tanner, E., and Gentine, P.: Failure of Taylor's hypothesis in the atmospheric surface layer and its correction for eddy-covariance measurements, *Geophys. Res. Lett.*, 44, 4287–4295, <https://doi.org/10.1002/2017GL073499>, 2017.
- Corrsin, S.: Turbulent flow, *Am. Sci.*, 49, 300–325, 1961.
- 460 Engelmann, C., & Bernhofer, C.-(2016)-.: Exploring Eddy-Covariance Measurements Using a Spatial Approach: The Eddy Matrix. *Boundary-Layer Meteorology, Meteorol.*, 161(4), 1–17. <https://doi.org/10.1007/S10546-016-0161-X/FIGURES/7>, 2016.
- Foken, T., Serafimovich, A., Eder, F., Hübner, J., Gao, Z., and Liu, H.: Energy and Matter Fluxes of a Spruce Forest Ecosystem, 309–329 pp., 2017.
- 465 Foken, T., Babel, W., Munger, J. W., Grönholm, T., Vesala, T., & Knohl, A.-(2021)-.: Selected breakpoints of net forest carbon uptake at four eddy-covariance sites. *Stockholm, Stock.* Uni Press, 73(4), 1–12. <https://doi.org/10.1080/16000889.2021.1915648>, 2021.
- ~~Foken, T., Serafimovich, A., Eder, F., Hübner, J., Gao, Z., & Liu, H. (2017). Energy and Matter Fluxes of a Spruce Forest Ecosystem. In *Energy and Matter Fluxes of a Spruce Forest Ecosystem*. <http://link.springer.com/10.1007/978-3-319-49389-3>~~
- 470 49389-3
- Freundorfer, A., Lapo, K., Schneider, J., & Thomas, C. K.-(2021)-.: Distributed sensing of wind direction using fiber-optic cables. *Journal of Atmospheric and Oceanic Technology*, *J. Atmos. Ocean. Technol.*, 1871–1883. <https://doi.org/10.1175/jtech-d-21-0019.1>, 2021.
- Fritz, A. M., Lapo, K., Freundorfer, A., Linhardt, T., & Thomas, C. K.-(2021)-.: Revealing the Morning Transition in the
- 475 Mountain Boundary Layer Using Fiber-Optic Distributed Temperature Sensing. *Geophysical Research Letters*, *Geophys. Res. Lett.*, 48(9), <https://doi.org/10.1029/2020GL092238>, 2021.
- van de Giesen, N., Steele-Dunne, S. C., Jansen, J., Hoes, O., Hausner, M. B., Tyler, S., and Selker, J.: Double-Ended Calibration of Fiber-Optic Raman Spectra Distributed Temperature Sensing Data, *Sensors* 2012, Vol. 12, Pages 5471–5485, 12, 5471–5485, <https://doi.org/10.3390/S120505471>, 2012.
- 480 Grachev, A. A., Andreas, E. L., Fairall, C. W., Guest, P. S., & Persson, P. O. G.-(2013)-.: The Critical Richardson Number and Limits of Applicability of Local Similarity Theory in the Stable Boundary Layer. *Boundary-Layer Meteorology, Meteorol.*, 147(1), 51–82. <https://doi.org/10.1007/s10546-012-9771-0>, 2013.
- KOLMOGOROV, & Kolmogorov and N., A.-(1941)-.: Energy dissipation in locally isotropic turbulence. *Dokl. Akad. Nauk. SSSR*, 32, 19–21. <https://ci.nii.ac.jp/naid/10010463168>, 1941.

- 485 Lapo, K., & Freundorfer, A. (2020).: klapo/pyfocs v0.5. <https://doi.org/10.5281/ZENODO.4292491>, 26 November 2020.
- ~~Lapo, K., Freundorfer, A., Fritz, A., Schneider, J., Olesch, J., Babel, W., & Thomas, C. K. (2022). The Large eddy Observatory, Voitsumra Experiment 2019 (LOVE19) with high resolution, spatially distributed observations of air temperature, wind speed, and wind direction from fiber-optic distributed sensing, towers, and ground-based remote sensing. *Earth Syst. Sci. Data*, 14, 885–906. <https://doi.org/10.5194/essd-14-885-2022>~~
- 490 Lapo, K., Freundorfer, A., Pfister, L., Schneider, J., Selker, J., & Thomas, C. (2020a). Distributed observations of wind direction using microstructures attached to actively heated fiber optic cables. *Atmospheric Measurement Techniques*, 13(3), 1563–1573. <https://doi.org/10.5194/amt-13-1563-2020>
- ~~Lapo, K., Freundorfer, A., Pfister, L., Schneider, J., Selker, J., & Thomas, C. (2020b). and Thomas, C.: Distributed observations of wind direction using microstructures attached to actively heated fiber-optic cables. *Atmos. Meas. Tech.*, 13, 1563–1573. <https://doi.org/10.5194/amt-13-1563-2020>, 2020.~~
- 495 Liang, J., Zhang, L., Wang, Y., Cao, X., Zhang, Q., Wang, H., & Zhang, B. (2014).: Turbulence regimes and the validity of similarity theory in the stable boundary layer over complex terrain of the Loess Plateau, China. *Wiley Online Library*, 119(40), 6009–6021. <https://doi.org/10.1002/2014JD021510>, 2014.
- Mahrt, L., Thomas, C., Richardson, S., Seaman, N., Stauffer, D., & Zeeman, M. (2013).: Non-stationary Generation of Weak Turbulence for Very Stable and Weak-Wind Conditions. *Boundary-Layer Meteorology*, 147(2), 179–199. <https://doi.org/10.1007/s10546-012-9782-x>, 2013.
- 500 Neter, J., Kutner, M., Nachtsheim, C., & Wasserman, W. (1996).: Applied linear statistical models. <https://mubert.marshall.edu/bert/syllabi/310720160114404301635160.pdf>, 1996.
- Pettitt, A. N. (1979).: A Non-Parametric Approach to the Change-Point Problem. *Journal of the Royal Statistical Society: Series, J. R. Stat. Soc. Ser. C (Applied Statistics)*, 28(2), 126–135. <https://doi.org/10.2307/2346729>, 1979.
- 505 Pfister, L., Lapo, K., Mahrt, L., & Thomas, C. K. (2021).: Thermal Submesoscale Motions in the Nocturnal Stable Boundary Layer. Part 1: Detection and Mean Statistics. *Boundary-Layer Meteorology*, 180(2), 187–202. <https://doi.org/10.1007/S10546-021-00618-0/FIGURES/10>, 2021.
- ~~Predosa, R.: Lasers in the Sky : Distributed Temperature Sensing and a Micro-Meteorological Approach to Quantifying Evapotranspiration. https://ir.library.oregonstate.edu/concern/graduate_thesis_or_dissertations/hx11xm175?locale=en, 17 June 2016.~~
- ~~van Ramshorst, J. G. V., Coenders-Gerrits, M., Schilperoort, B., van de Wiel, B. J. H., Izett, J. G., Selker, J. S., Higgins, C. W., Savenije, H. H. G., Pfister, L., Sigmund, A., Olesch, J., & Thomas, C. K. (2017). Nocturnal Near Surface Temperature, but not Flow Dynamics, can be Predicted by Microtopography in a Mid Range Mountain Valley. *Boundary Layer Meteorology*, 165(2), 333–348. <https://doi.org/10.1007/s10546-017-0281-y>~~
- 515 and van de Giesen, N. C.: Revisiting wind speed measurements using actively heated fiber optics: A wind tunnel study, *Atmos. Meas. Tech.*, 13, 5423–5439, <https://doi.org/10.5194/amt-13-5423-2020>, 2020.
- Sayde, C., Thomas, C. K., Wagner, J., & Selker, J. (2015).: High-resolution wind speed measurements using actively

- heated fiber optics. ~~*Geophysical Research Letters*~~, *Geophys. Res. Lett.*, 42(22), 10064–10073, <https://doi.org/10.1002/2015GL066729>, 2015.
- 520 <https://doi.org/10.1002/2015GL066729>, 2015.
- [Schilperoort, B., Coenders-Gerrits, M., Rodriguez, C., van der Tol, C., Van De Wiel, B., and Savenije, H.: Decoupling of a Douglas fir canopy: A look into the subcanopy with continuous vertical temperature profiles, *Biogeosciences*, 17, 6423–6439, <https://doi.org/10.5194/bg-17-6423-2020>, 2020.](https://doi.org/10.5194/bg-17-6423-2020)
- Sun, J., Mahrt, L., Banta, R. M., ~~&and~~ Pichugina, Y. L. (2012): Turbulence regimes and turbulence intermittency in the stable boundary layer: During CASES-99. ~~*Journal of the Atmospheric Sciences*~~, *J. Atmos. Sci.*, 69(4), 338–351, <https://doi.org/10.1175/JAS-D-11-082.1>, 2012.
- 525 <https://doi.org/10.1175/JAS-D-11-082.1>, 2012.
- Tennekes, H., Lumley, J., ~~&and~~ Lumley, J. (1972): A first course in turbulence. https://books.google.com/books?hl=en&lr=&id=h4eoCj-IN0eC&oi=fnd&pg=PR13&dq=Hendrik+Tennekes,+John+L.+Lumley&ots=DHmeF7tjMi&sig=qA5QOFnvWzYji2wf_b6jd&DUzs, 1972.
- 530 [Thomas, C., ~~&~~ and Foken, T. \(2007\): Flux contribution of coherent structures and its implications for the exchange of energy and matter in a tall spruce canopy. *Boundary-Layer Meteorology*, *Meteorol.*, 123\(2\), 317–337, <https://doi.org/10.1007/s10546-006-9144-7>, 2007.](https://doi.org/10.1007/s10546-006-9144-7)
- Thomas, C. K. (2011): Variability of Sub-Canopy Flow, Temperature, and Horizontal Advection in Moderately Complex Terrain. *Boundary-Layer Meteorology*, *Meteorol.*, 139(4), 61–81, <https://doi.org/10.1007/s10546-010-9578-9>, 2011.
- 535 [Thomas, C. K. and Selker, J.: Optical Fiber-Based Distributed Sensing Methods, *Springer Handbooks*, 611–633, <https://doi.org/10.1007/978-3-030-52171-4>, 2021.](https://doi.org/10.1007/978-3-030-52171-4)
- [Thomas, C. K., Law, B. E., Irvine, J., Martin, J. G., Pettijohn, J. C., Davis, K. J., Thomas, C. K., Law, B. E., Irvine, J., Martin, J. G., Pettijohn, J. C., and Davis, K. J.: Seasonal hydrology explains interannual and seasonal variation in carbon and water exchange in a semiarid mature ponderosa pine forest in central Oregon, *J. Geophys. Res. Biogeosciences*, 114, 4006, <https://doi.org/10.1029/2009JG001010>, 2009.](https://doi.org/10.1029/2009JG001010)
- 540 [Thomas, C. K., Kennedy, A. M., Selker, J. S., Moretti, A., Schroth, M. H., Smoot, A. R., Tufillaro, N. B., ~~&and~~ Zeeman, M. J. \(2012\): High-Resolution Fibre-Optic Temperature Sensing: A New Tool to Study the Two-Dimensional Structure of Atmospheric Surface-Layer Flow. *Boundary-Layer Meteorology*, *Meteorol.*, 142\(2\), 177–192, <https://doi.org/10.1007/s10546-011-9672-7>, 2012.](https://doi.org/10.1007/s10546-011-9672-7)
- 545 [Thomas, C. K., & Selker, J. \(2021\). Optical Fiber Based Distributed Sensing Methods. *Springer Handbooks*, 611–633. \[https://doi.org/10.1007/978-3-030-52171-4_20\]\(https://doi.org/10.1007/978-3-030-52171-4_20\)](https://doi.org/10.1007/978-3-030-52171-4_20)
- Thomas, C. K., Serafimovich, A., Siebicke, L., Gerken, T., ~~&and~~ Foken, T. (2017): Coherent Structures and Flux Coupling. 113–135, https://doi.org/10.1007/978-3-319-49389-3_6, 2017.
- 550 [van de Giesen, N., Steele Dunne, S. C., Jansen, J., Hoes, O., Hausner, M. B., Tyler, S., & Selker, J. \(2012\). Double Ended Calibration of Fiber Optic Raman Spectra Distributed Temperature Sensing Data. *Sensors* 2012, Vol. 12, Pages 5471–5485, 12\(5\), 5471–5485. <https://doi.org/10.3390/S120505471>](https://doi.org/10.3390/S120505471)

- 555 ~~Van de Wiel, B. J. H., Moene, A. F., Jonker, H. J. J., Baas, P., Basu, S., Donda, J. M. M., Sun, J., & Holtslag, A. A. M. (2012). The minimum wind speed for sustainable turbulence in the nocturnal boundary layer. *Journal of the Atmospheric Sciences*, 69(11), 3116–3127. <https://doi.org/10.1175/JAS-D-12-0107.1>~~
- ~~van Ramshorst, J. G. V., Coenders-Gerrits, M., Schilperoord, B., van de Wiel, B. J. H., Izett, J. G., Selker, J. S., Higgins, C. W., Savenije, H. H. G., & van de Giesen, N. C. (2020). Revisiting wind speed measurements using actively heated fiber optics: A wind tunnel study. *Atmospheric Measurement Techniques*, 13(10), 5423–5439. <https://doi.org/10.5194/amt-13-5423-2020>~~
- 560 Vickers, D., & and Thomas, C. K. (2014).: Observations of the scale-dependent turbulence and evaluation of the flux-gradient relationship for sensible heat for a closed Douglas-fir canopy in very weak wind conditions. ~~*Atmospheric Chemistry and Physics*, Atmos. Chem. Phys.~~, 14(18), 9665–9676. <https://doi.org/10.5194/ACP-14-9665-2014>, 2014.
- ~~Van de Wiel, B. J. H., Moene, A. F., Jonker, H. J. J., Baas, P., Basu, S., Donda, J. M. M., Sun, J., and Holtslag, A. A. M.: The minimum wind speed for sustainable turbulence in the nocturnal boundary layer, *J. Atmos. Sci.*, 69, 3116–3127, <https://doi.org/10.1175/JAS-D-12-0107.1>, 2012.~~
- 565 Wilczak, J. M., Oncley, S. P., & and Stage, S. A. (2001).: Sonic Anemometer Tilt Correction Algorithms. ~~Boundary-Layer Meteorology~~ *Meteorol.* 2001 991, 99:1, 99(1), 127–150. <https://doi.org/10.1023/A:1018966204465>, 2001.
- Zarenistanak, M., Dhorde, A. G., & and Kripalani, R. H. (2014).: Trend analysis and change point detection of annual and seasonal precipitation and temperature series over southwest Iran. ~~*Journal of J. Earth System Science, Syst. Sci.*~~, 123(2), 281–
- 570 295. <https://doi.org/10.1007/S12040-013-0395-7/FIGURES/11>, 2014.

575

580

585

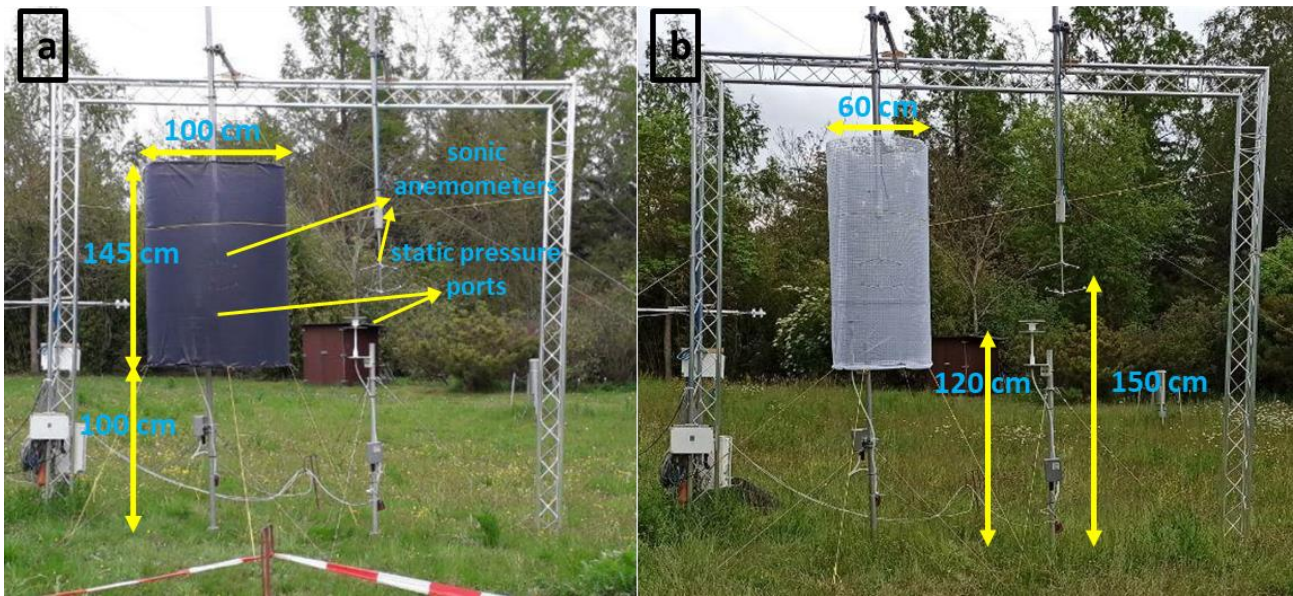
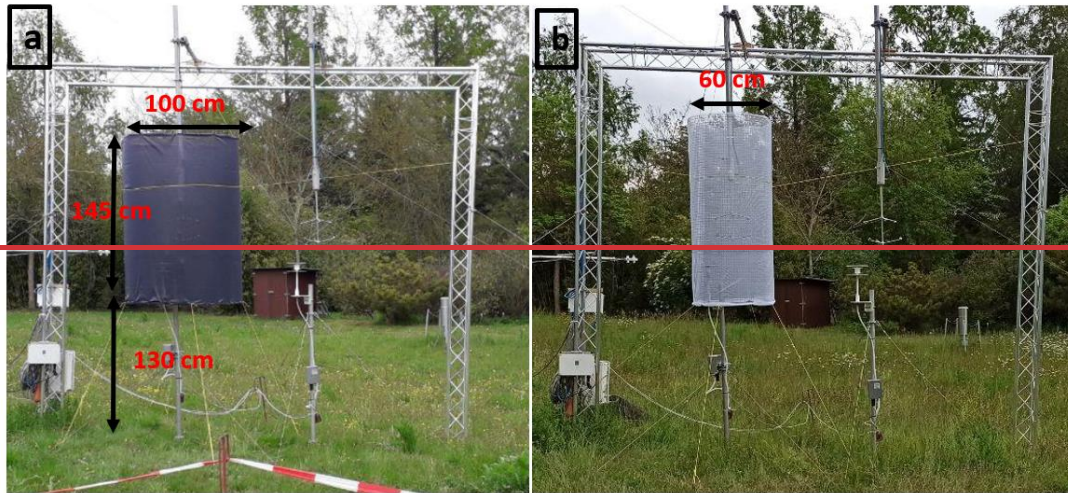


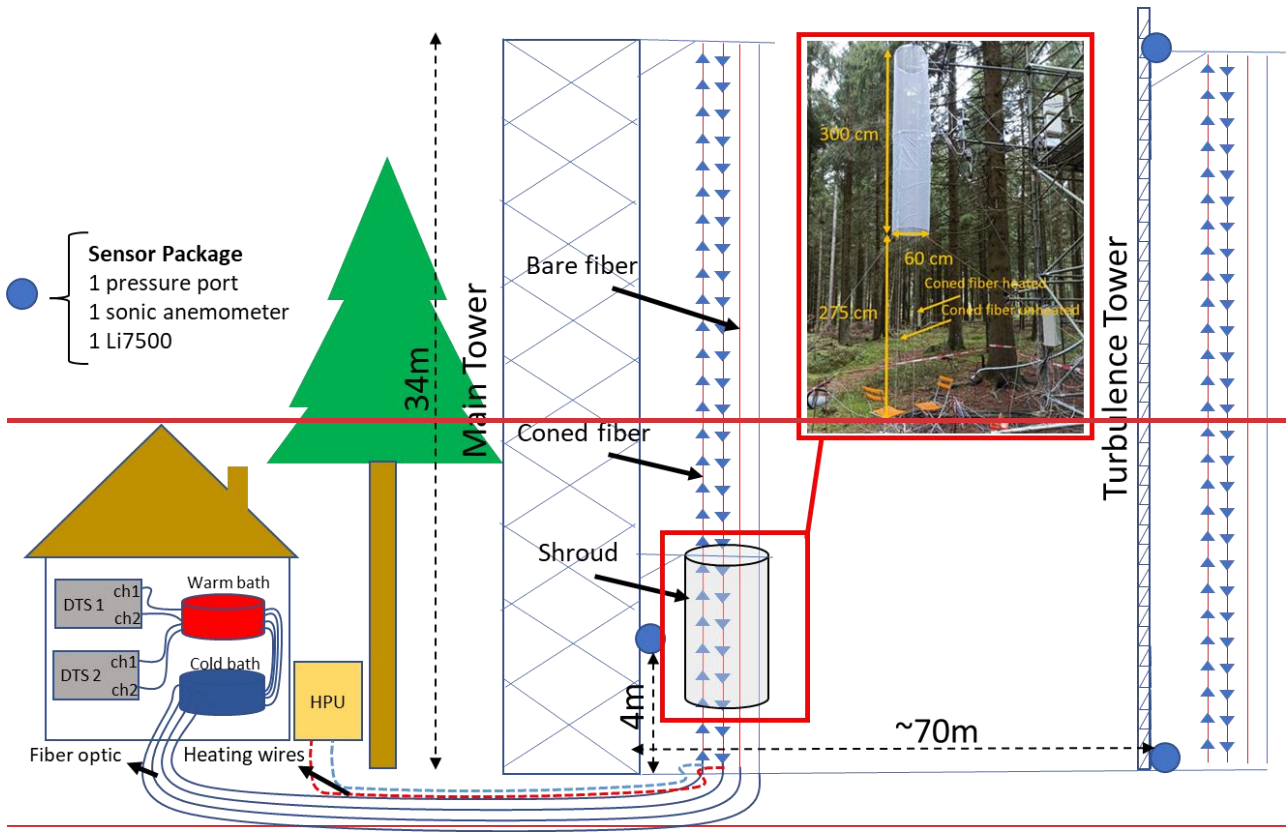
Fig. 1. Two examples of shroud experiment setup containing two upsides down sonic anemometers and two high-precision pressure transducers with the quad disk to measure static pressure. (a) A 1 m diameter cylindrical shroud with fine porosity gray color texture (b) A 60 cm cylindrical shroud with a white insect screen.

590

595

600

605



610

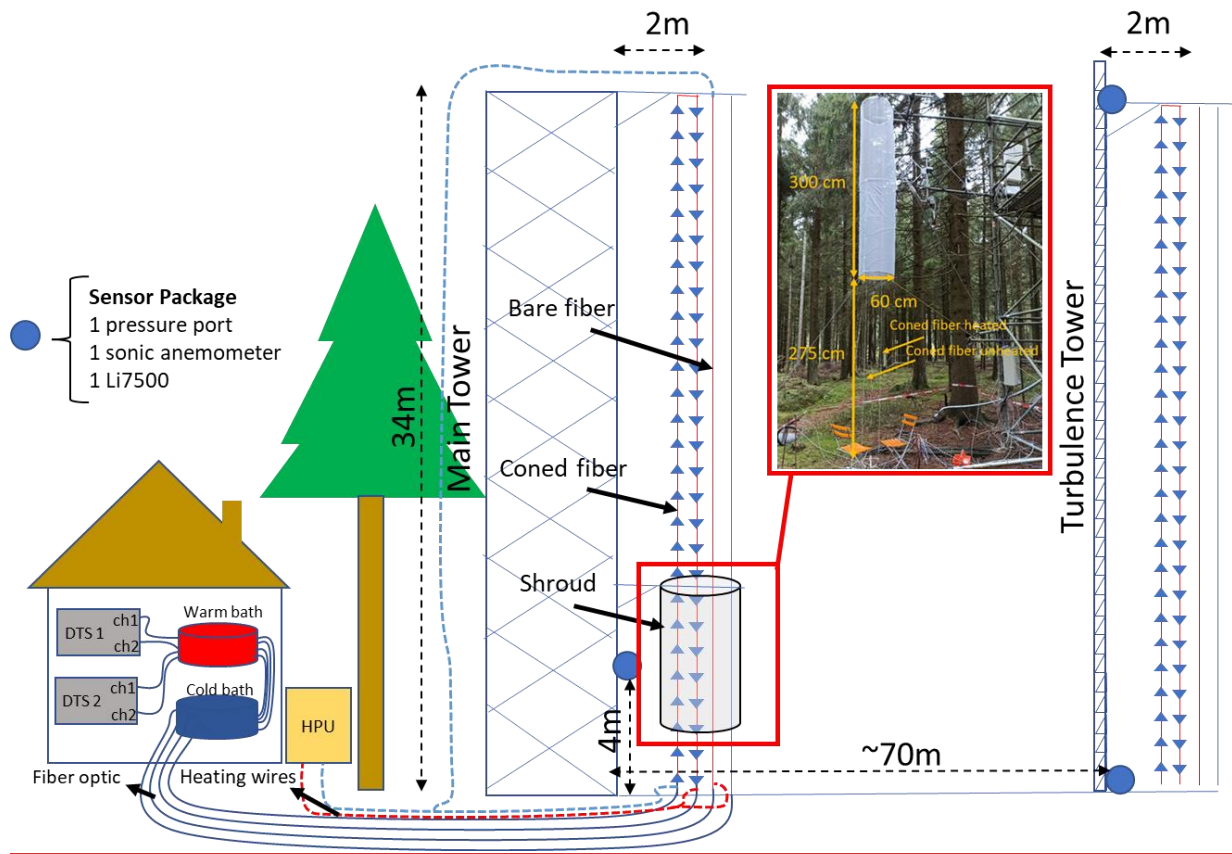
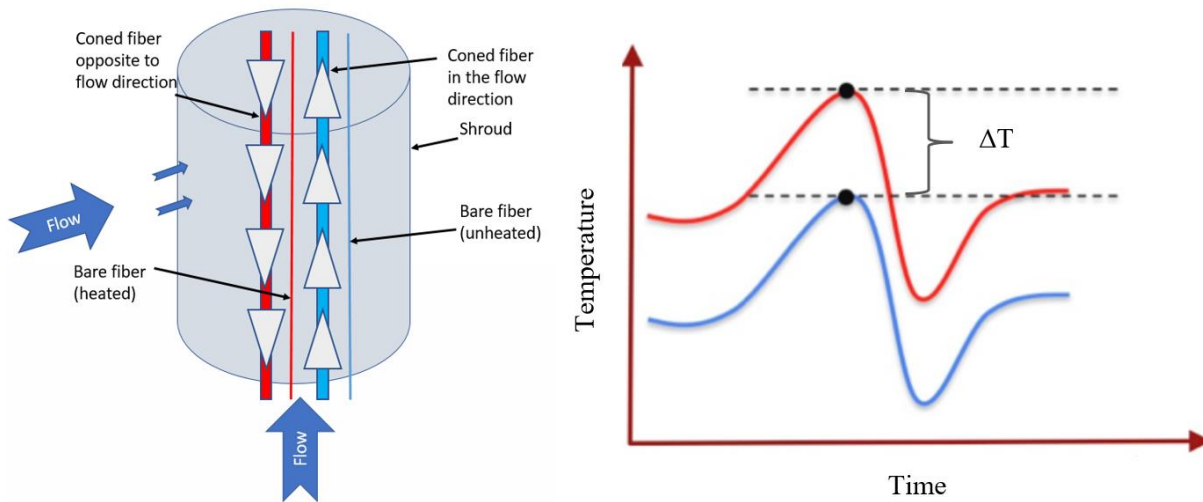


Fig. 2. Left: Shroud experiment schematic at Waldstein forest including a quartet of a vertical FO array and affixing a shroud at 4m height at the main tower close to sensor package including a static pressure port, a sonic anemometer, and an open path infrared gas analyzer. Each coned and unconed fiber is connected to separate DTS devices. For DTS data calibration purposes, warm and cold baths were deployed at the start and end of each fiber optic loop. Three FO arrays out of four are heated using Heat Pulse Unit (HPU). The FO arrays at the turbulence tower wiring are similar to the main tower, which is eliminated due to simplicity of the schematic. Right: Photograph showing the subcanopy shroud experiment and the same vertical quartet FO array at the turbulence tower having the two sensor packages as the main tower at 0.1m and ~~36~~36m above ground level.

615

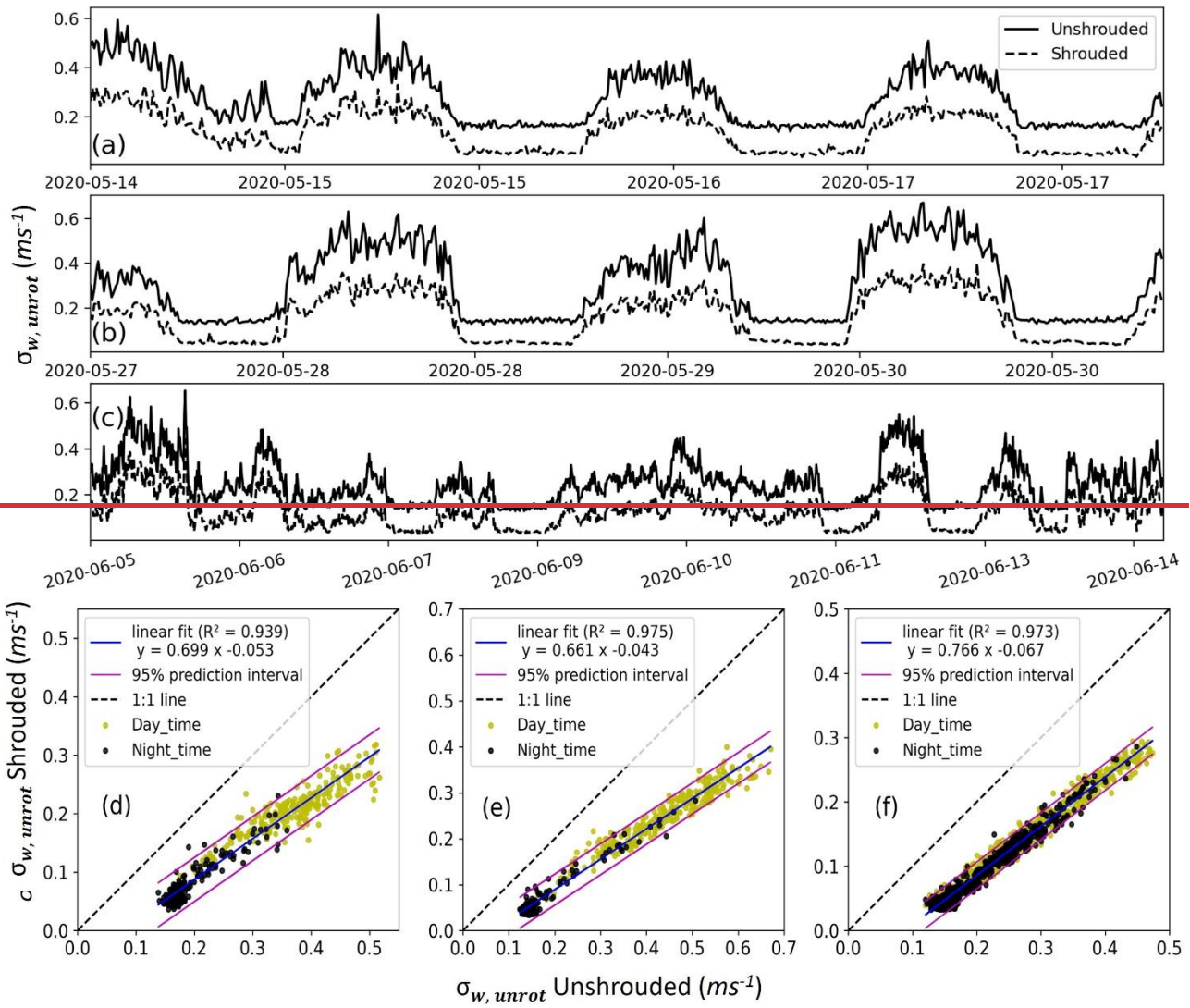
620



630

Fig 3. Left: Microstructure approach to detecting vertical wind direction using coned FO cables inside the cylindrical shroud. Assuming updraft, the left fiber (indicated in red) would be warmer than the right fiber (shown in blue) due to the cones' direction. Right: Microscopic approach: ΔT determined by wind direction.

635



640

Shroud experiment at EBG

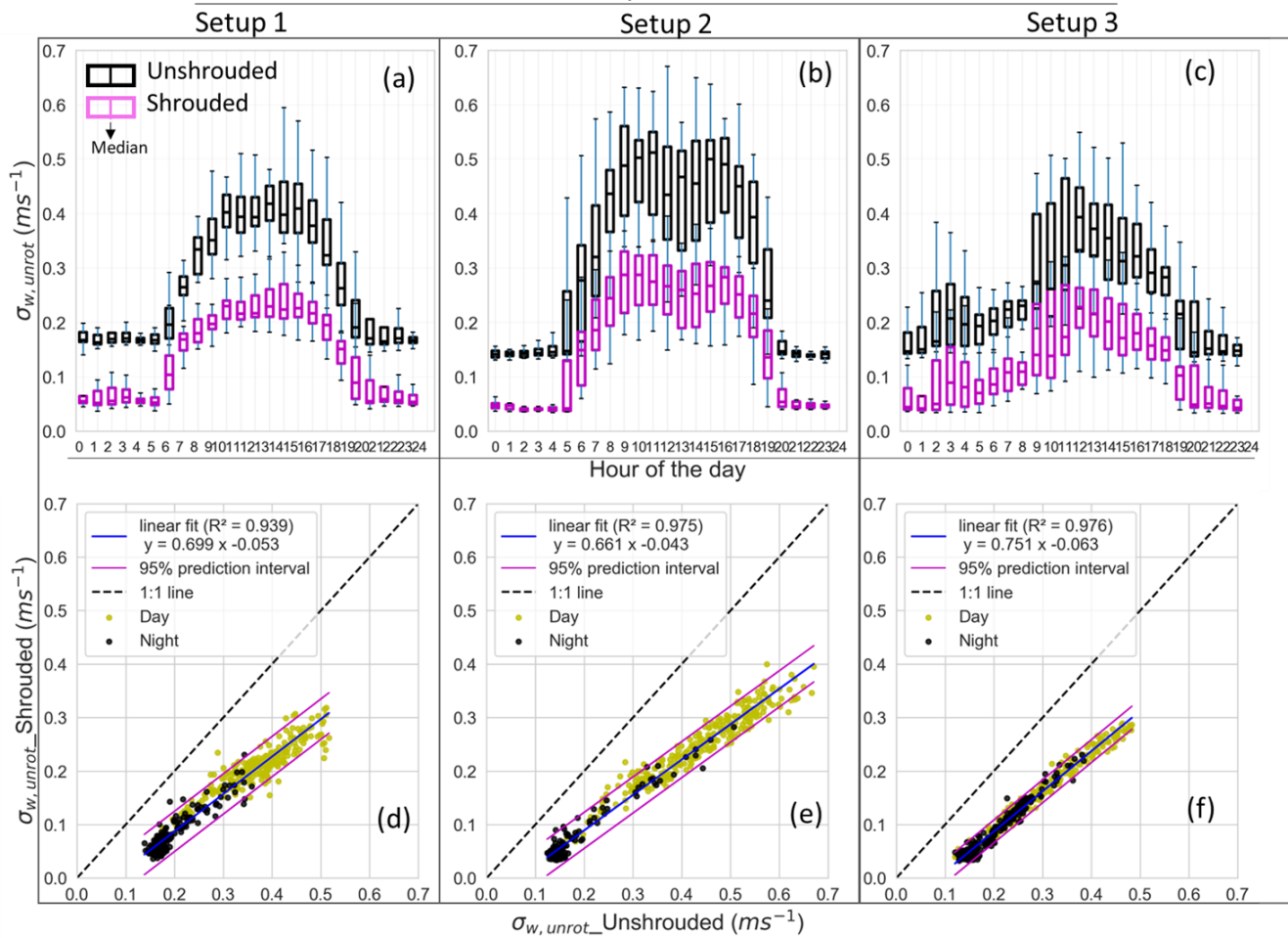
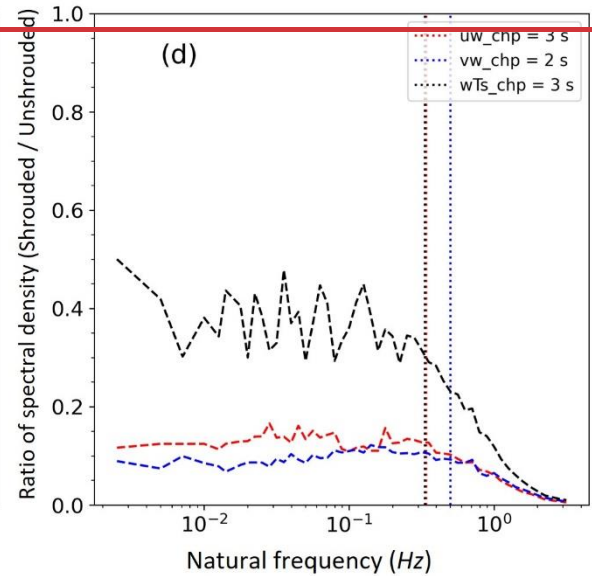
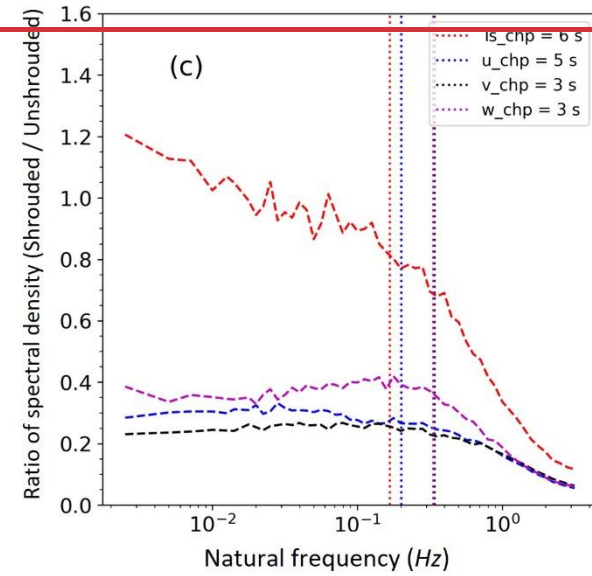
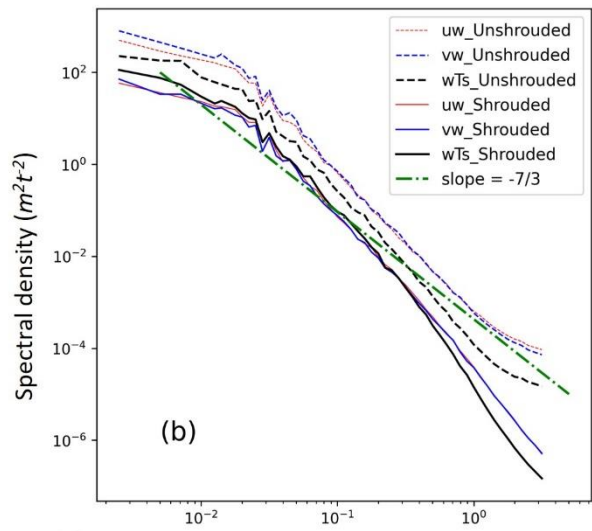
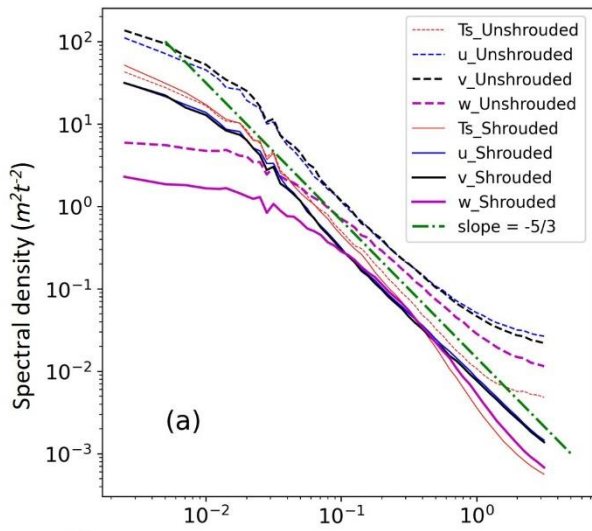
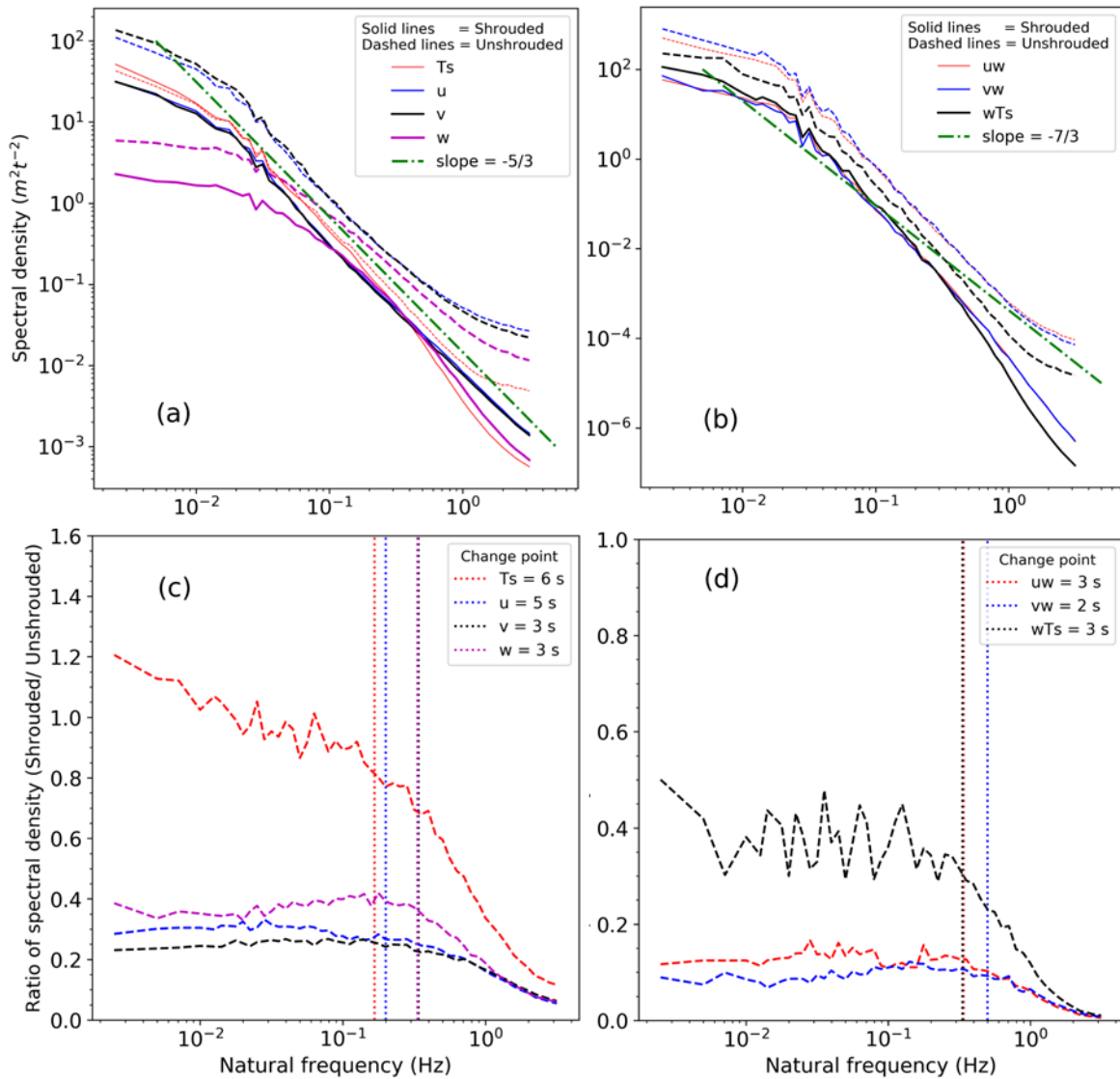


Fig 4. Time-series Left column (a, d): Diurnal cycle of unrotated vertical wind speed standard deviation ($\sigma_{w,unrot}$) for and scatter plots between $\sigma_{w,unrot}$ shrouded and $\sigma_{w,unrot}$ unshrouded for setup 1 of the shroud experiment at EBG ~~are shown for setup 1 (a),~~ The middle (b, e) and right (c, f) columns show setup 2 (b), and setup 5 (e) for shrouded and unshrouded sonic anemometers, and 3, respectively. 10 min statistic of unrotated vertical wind speed was used to compare the setups. Scatter plots between shrouded and unshrouded vertical wind speed (w) standard deviations are shown for setup 1 (d), setup 2 (e), and setup 3 (f), separated for night and daytime, shown with black Black and yellow solid points, separate night and daytime. The linear prediction and 95 prediction intervals have also been are shown with blue and magenta solid lines.

645



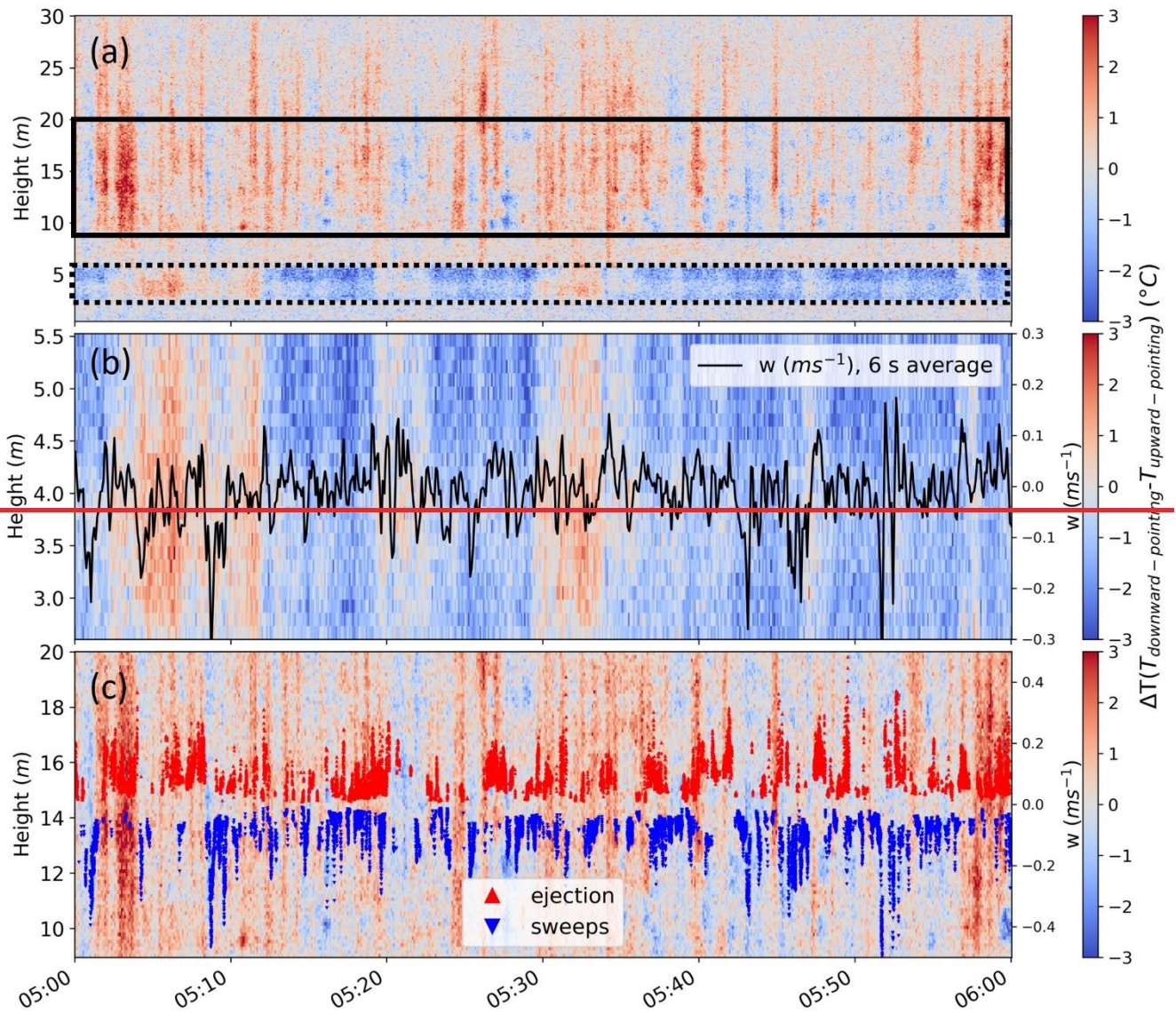
Setup 3



650

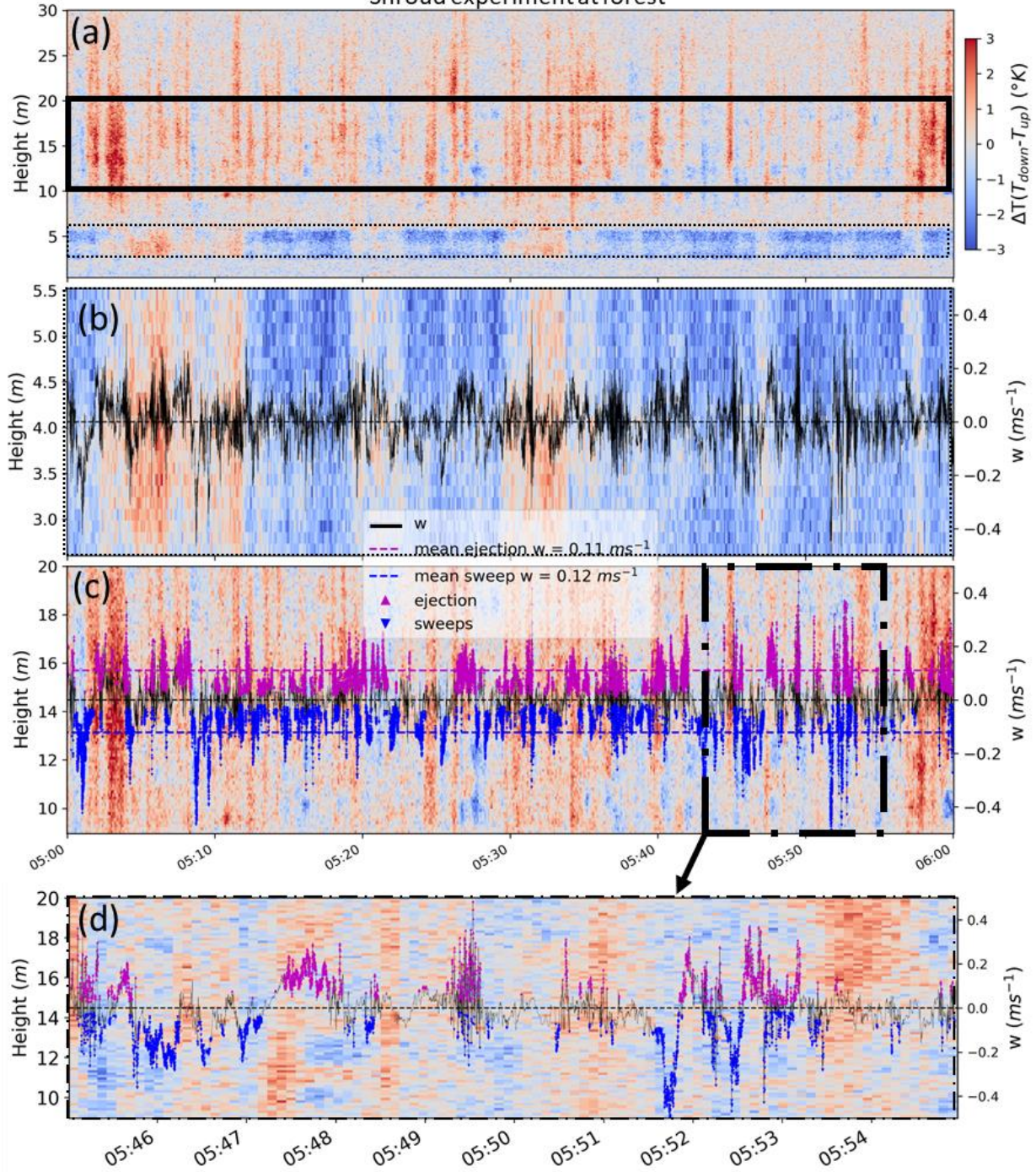
Fig 5. (a) The spectra of the wind speed components and temperature of the third setup 3 computed for every 10 minutes and ensemble-averaged over the whole period (5 to of (June 5-14, 2020)), (b) the cospetra of the horizontal momentum fluxes, e.g., uw and vw and buoyancy fluxes flux, e.g., wTs for the shrouded and unshrouded setups, using 20-Hz sampled data, (c) the ratio of shrouded to unshrouded power spectra, and (d) the ratio of shrouded to unshrouded cospetra specifying the change points with vertical dotted lines. The colors used in (c) and (d) for dashed lines show the same variables in (a) and (b). Ts is the sonic temperature, and v is the horizontal wind speed normal to u.

655

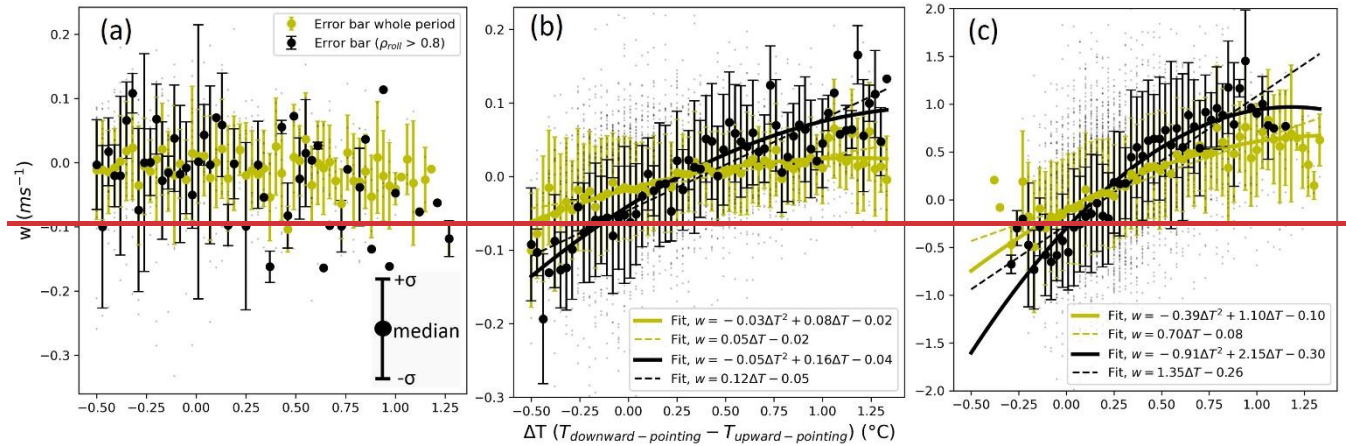


660

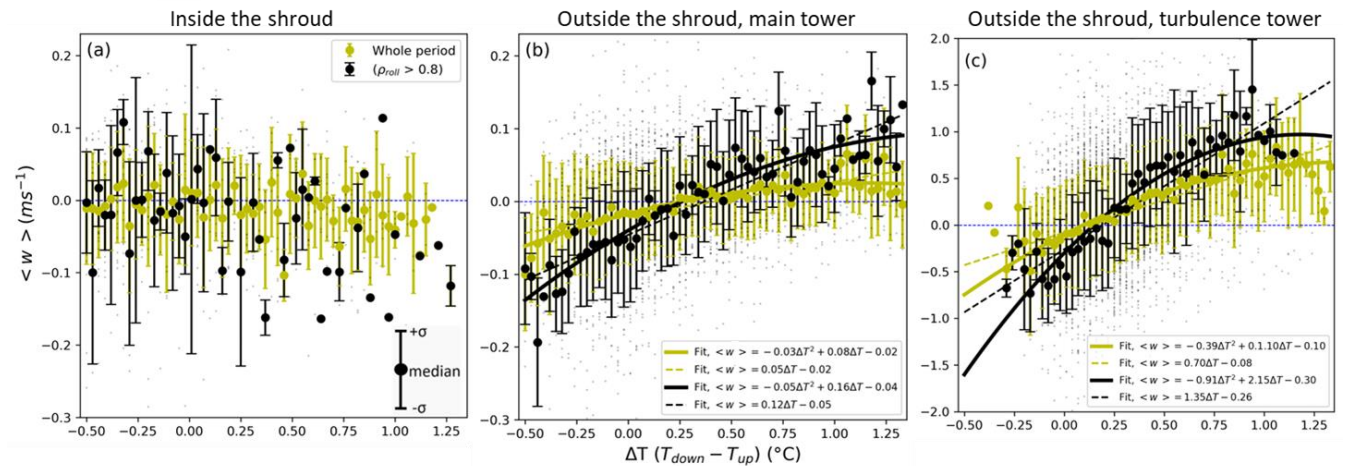
Shroud experiment at forest



665 Fig 6. (a) Differences in upward-pointing and downward-pointing FODS temperature (ΔT), 6s time resolution at the main tower during the LOEWE20 experiment on October 24, 2020, 05:00 to 06:00 UTC. The black box with a dashed line shows the location of the shroud installation, and the black box with a solid line shows the comparison section. (b) shows the magnified temperature difference inside the shroud containing 2.75-5.75 m above the ground. The solid black line shows the 20Hz vertical 6s-wind speed average of the sonic anemometer installed in the middle of the shroud. (c) shows magnified temperature within the solid black box in (a), the height range where the minimum horizontal wind speed occurs in the subcanopy. The red/magenta upward arrows show the vertical wind during the ejection phase, and the blue downward arrows show the vertical wind during the sweep phase extracted with quadrant analysis with hyperbolic thresholding using 20 Hz sampled data at 4m height. (d) shows zoom into the dashed-dotted black box in c.



Shroud experiment at forest



680 Fig 7. (a) Scatter plot between 6s averaged vertical wind speed ($\langle w \rangle$) of sonic anemometer at 4m height and ΔT inside the shroud (3-5 m height) for the whole period shown in yellow and subsampled with $\rho_{roll} > 0.8$ with black. The error bars show the median with a solid point with two whiskers at $\pm\sigma$. (b) the same scatter plot as (a) but outside the shroud at 12-17 m agl-above ground level. At the main tower. (c) The same scatter plot as (b) but for turbulence tower. The error bars are based on the ensemble average of w over ΔT with a bin size of 0.03 °C, and the fit lines are based on the median points for each bin. The data of October 24 2020, 01:00 to 08:00 UTC was used to produce the scatter plots. All the data in scatter plots are limited to the 99% percentile.

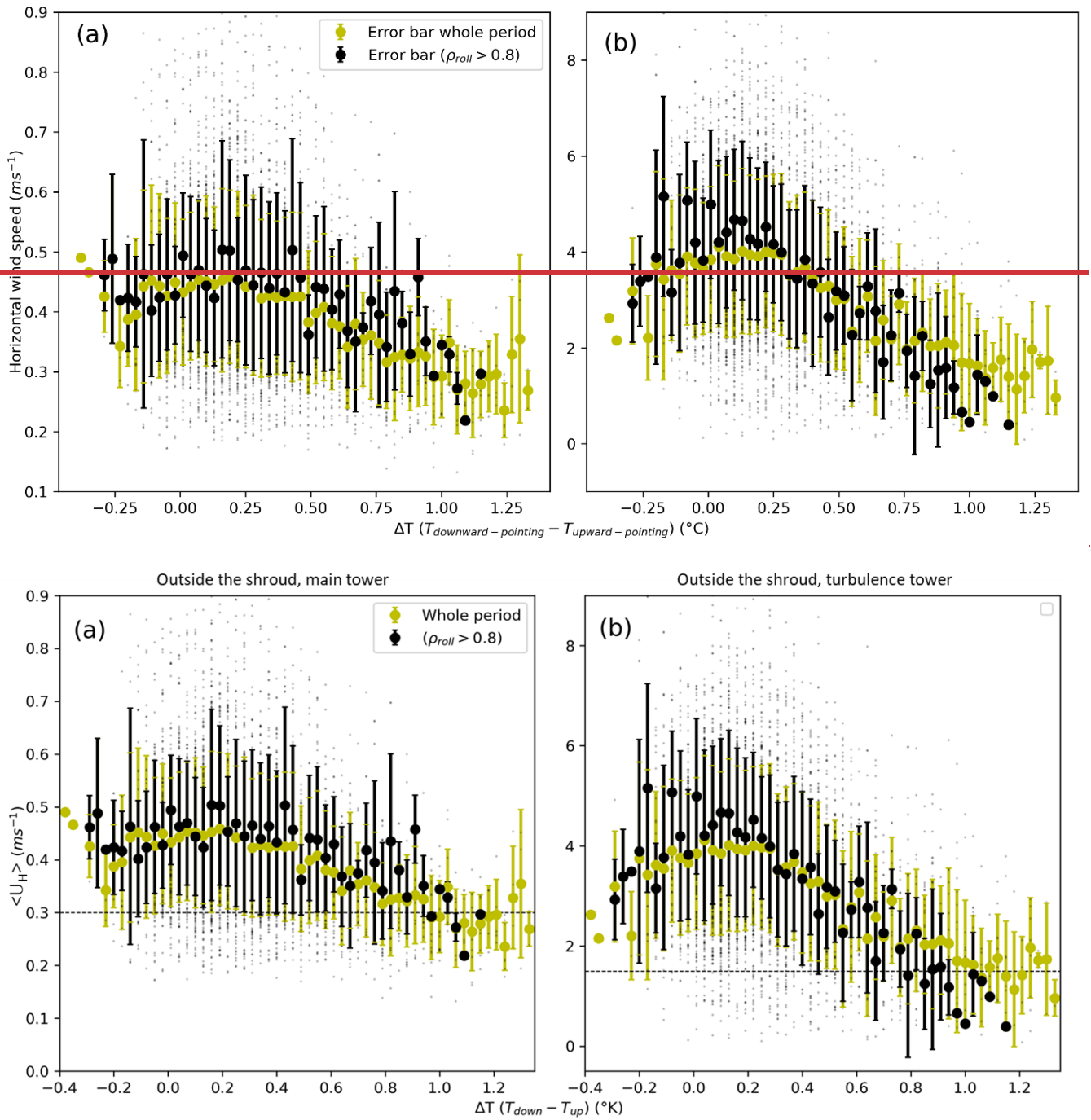
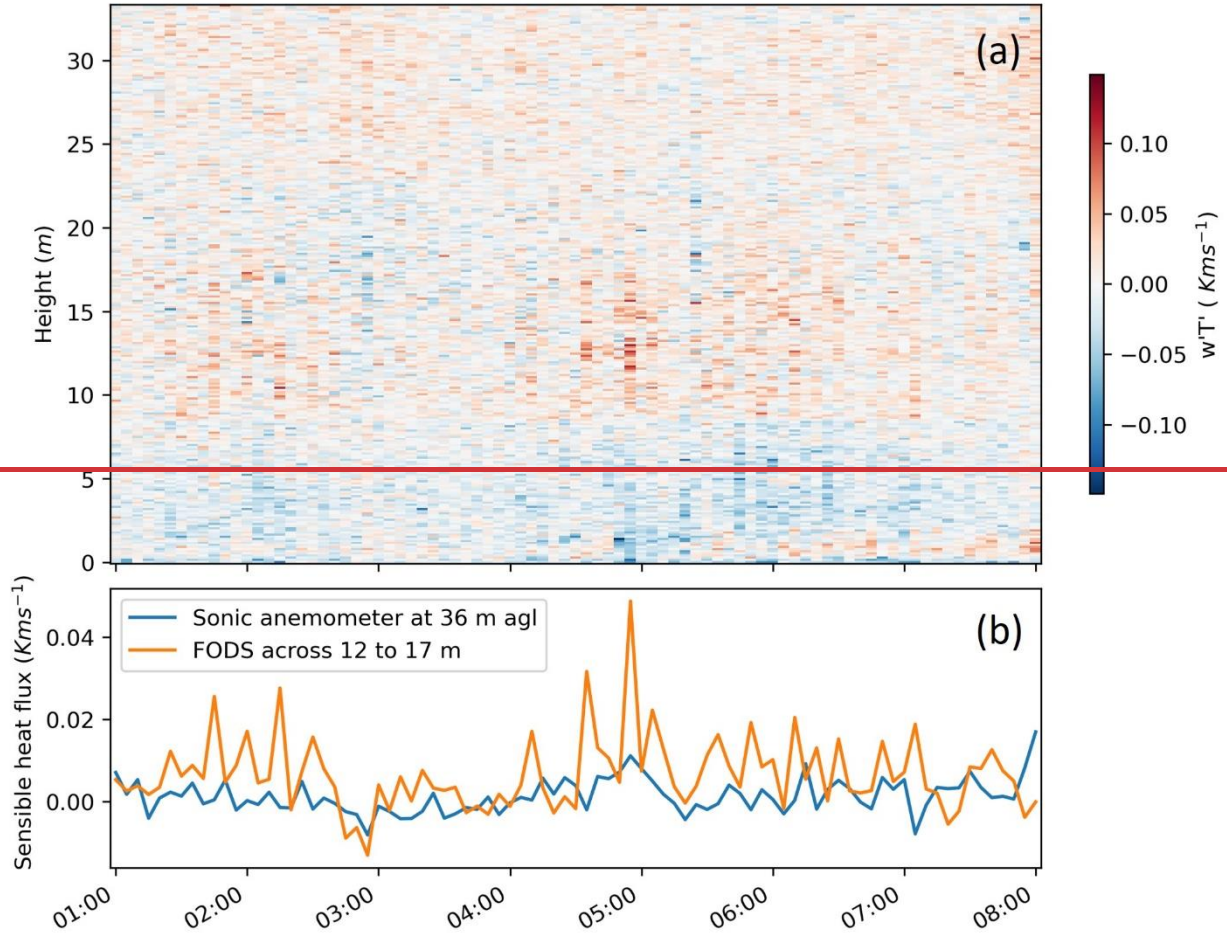
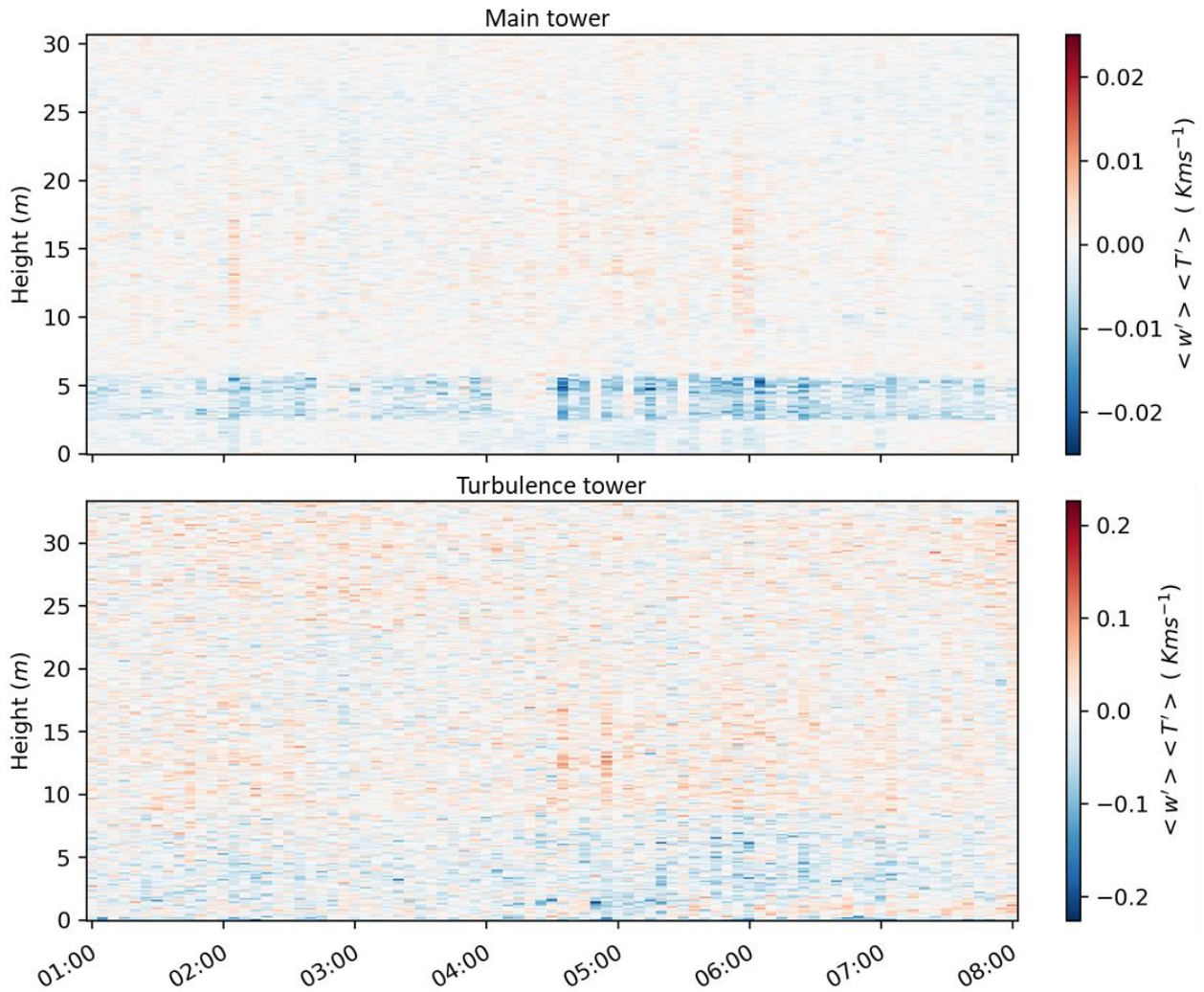


Fig 8. (a) Scatter plot between horizontal wind speed computed using FODS and ΔT both averaged at the 12-17m aglabove ground level at the turbulence tower (b) The same plot as (a) but using the wind speed from sonic anemometer at 36m-agl. See the Fig. 7 caption ~~to~~for the error bar and data information.





695 **Fig 9. (a) ~~First ever distributed~~ Distributed** sensible heat flux estimates from FODS averaged over 5 minutes at the main and turbulence tower on October 24 2020, 01:00 to 08:00 UTC. Our approach utilizes a linear regression between ΔT drove from coned fibers and w from a sonic anemometer at 36m to calculate distributed w . The temperature of unheated bare fiber is used as distributed air temperature. †

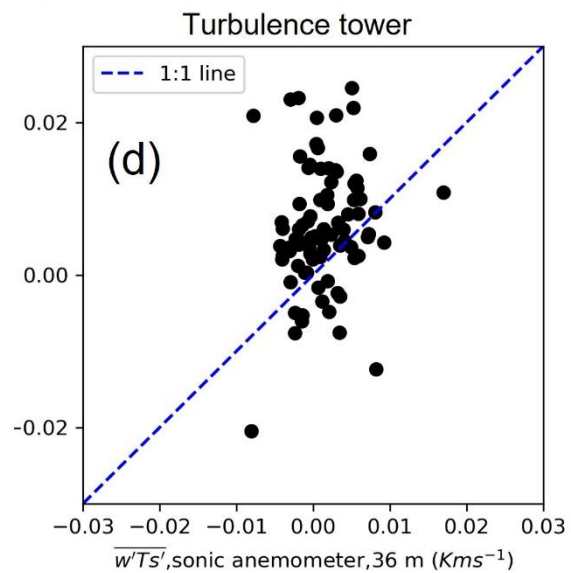
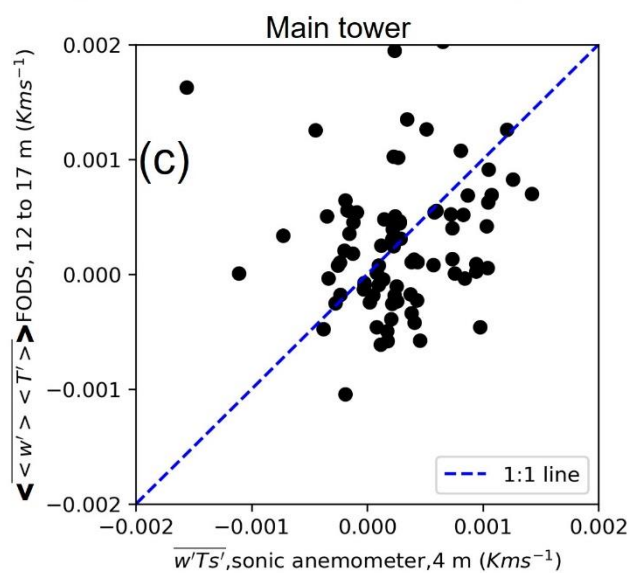
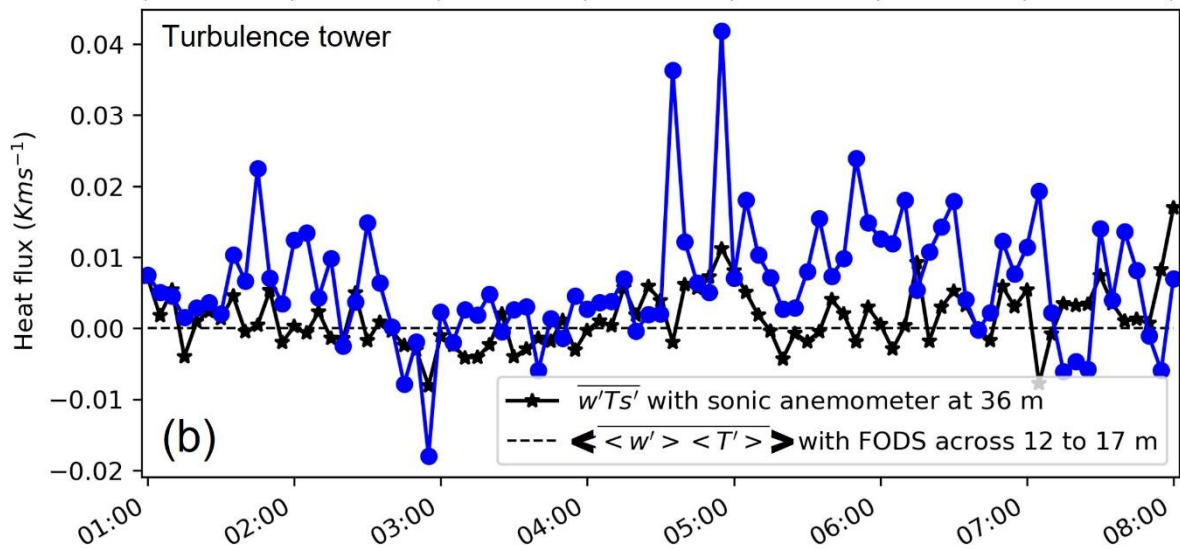
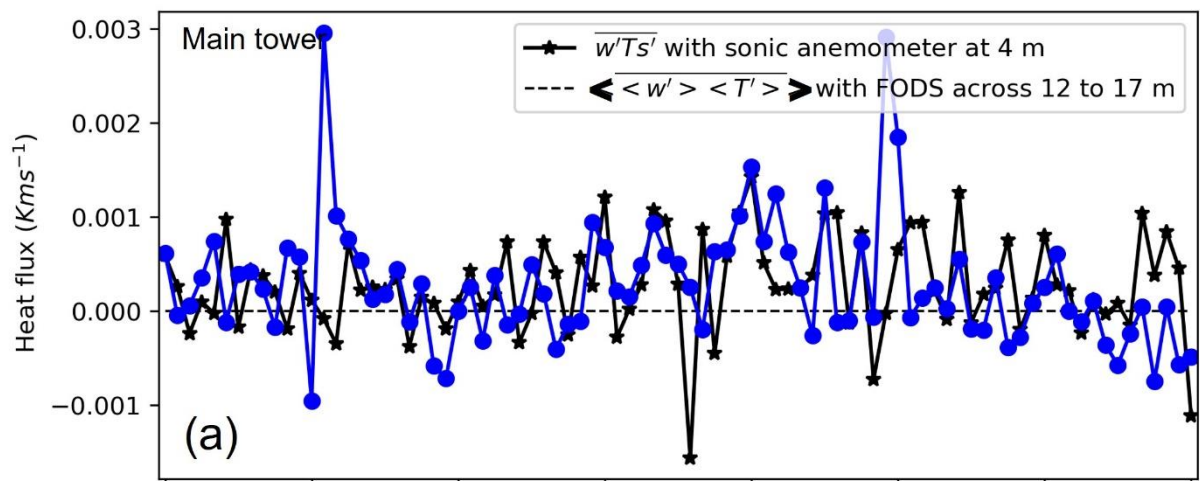
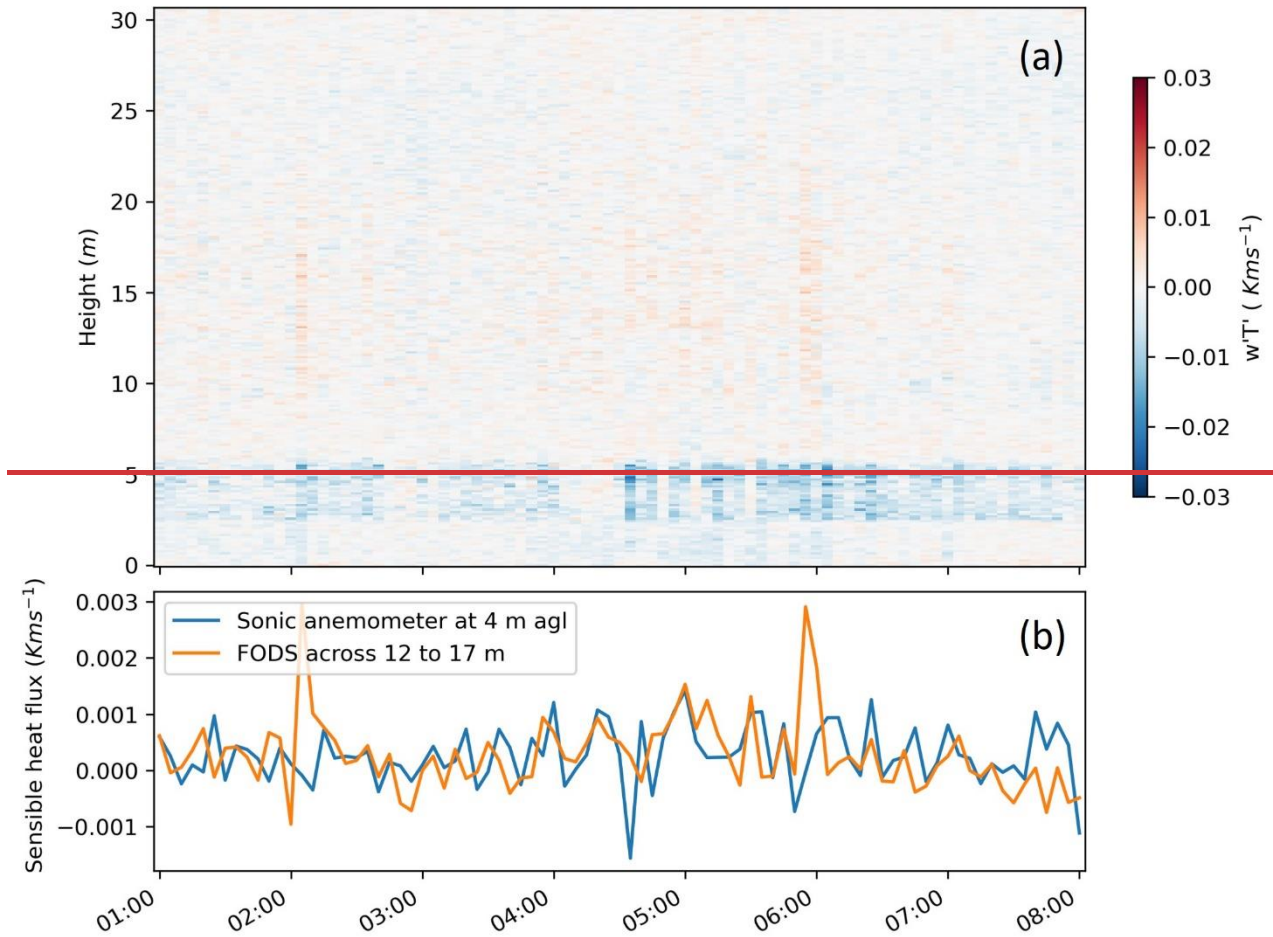


Fig 10. (a, b) Time series and (c, d) scatter plot of the sensible heat fluxes observed with the sonic anemometer and from FODS for heights between 12 and 17m, which is the height where the horizontal wind speed is minimum.

705



710

Fig 10. (a) Distributed sensible heat flux estimates from FODS averaged over 5 minutes at the main tower using a linear regression between ΔT drove from coned fibers and w from a sonic anemometer at 4m to calculate distributed w on October 24 2020, 01:00 to 08:00 UTC. The temperature of unheated bare fiber is used as distributed air temperature. The highlighted bluish fluxes are induced within the shroud. (b) Time series of the sensible heat fluxes observed with the sonic anemometer and from FODS for heights between 12 and 17m.

Table 1. Coefficient of determination and RMSE between scalar total wind speed, horizontal wind speed standard deviation, and vertical wind standard deviations with and without shroud setup with N being the number of averaging intervals of 10 minutes statistic. (1-a)*100 shows RP is the reduction percentage of each component with within the shroud in comparison to the outside of the shroud. RMSE is calculated between data and the linear fit. The RMSE for each variable is shown in a range referring to the RMSE of daytime and nighttime data. The observational period is April 15 to June 15, 2020.

Statistics Setups	N	<u>Scalar Total</u> wind speed (<u>U</u>)			Horizontal wind speed <u>standard deviation</u> ($\sigma_{U_{H,unrot}}$)			$\sigma_{w,unrot}$		
		<u>(1-a)*100</u> RP (%)	R ²	RMSE [ms ⁻¹] <u>With</u> - <u>without</u>	<u>(1-a)*100</u> RP (%)	R ²	RMSE [ms ⁻¹] with - without	<u>(1-a)*100</u> RP (%)	R ²	RMSE [ms ⁻¹] with - without
Setup1 (Gray & dense shroud, 1 m diameter, 1.5 m height, 2020-05-14 to 2020-05-18)	553	7473	0.945908	0.1642-0.1555	72	0.952	0.39-0.440	30	0.935939	0.014-0.019
Setup2 (Gray & dense shroud, 60 cm diameter, 1.5 m height, 2020-05-27 to 2020-05-31)	550	74	0.946891	0.1964-0.1746	74	0.955	0.5351-0.5153	34	0.975	0.018-0.024
Setup3 (White & not dense shroud, 60 cm diameter, 1.5 m height, 2020-06-10 to 2020-06-14)	130 555 2	35	0.964911	0.03310-0.04514	3533	0.978974	0.409-0.1513	2325	0.972976	0.012-0.017

Table 2. Coefficient of determination (R²) and RMSE between quadratic and linear fit on the median points at Fig. 7 for the whole period and $\rho_{roll} > 0.8$, ρ_{roll} being the rolling correlations between ΔT and w . The number of ~~the~~ data used to compute the R² and RMSE was N = 62 for all cases. The same data as Fig.7 was used for computation.

	Main tower whole period	Main tower $\rho_{roll} > 0.8$	Turbulence tower whole period	Turbulence tower $\rho_{roll} > 0.8$
R ² , linear model	0.70	0.82	0.88	0.86
RMSE [ms ⁻¹]	0.044	0.032	0.184	0.412
R ² , quadratic model	0.78	0.85	0.93	0.92
RMSE [ms ⁻¹]	0.017	0.055	0.14	0.316

Table 3. The percentage of correctly detected vertical wind direction (F) was compared as a ratio of the number of vertical wind directions successfully identified using FODS to the number of chosen data based on the sonic anemometer wind direction. A 5 m length of FODS data 12 to 17 m ag above ground level was used to compute the F for both towers. The same data as Fig.7 was used for computation.

	Main tower		Turbulence tower	
	N	F (%)	N	F (%)
All of the data	4200	60	4200	63
$\rho_{roll} > 0.8$	834	71	753	67