

Long Distance Propagation of 162-MHz Shipping Information Links Associated with Sporadic-E

Alex T. Chartier¹, Thomas R. Hanley¹, Daniel J. Emmons²

¹ Johns Hopkins University Applied Physics Laboratory, Laurel, MD 20723, United States of America

5 ² Air Force Institute of Technology, Wright-Patterson AFB, OH 45433, United States of America

Correspondence to: Alex T. Chartier (alex.chartier@jhuapl.edu)

Abstract. Sporadic-E layers form in the daytime midlatitude ionosphere as a result of wind shears in the mesosphere-lower
10 thermosphere compressing metallic ions of meteoric origin into dense, narrow sheets extending over hundreds or thousands of
kilometers spatially. These layers are poorly observed, being too narrow to be properly resolved by incoherent scatter radar or
path-integrated total electron content measurements. Sporadic-E layer peak densities can be resolved by ionosondes and by
rocket-borne Langmuir probes, but these techniques have major limitations in terms of spatial and temporal coverage, and (for
many ionosondes) maximum density resolution. As a result, the density, occurrence and spatial extent of sporadic-E layers are
15 not well constrained by observations. The maximum density of sporadic-E is widely believed to be around $5\text{-}10 \times 10^{11}$ el. m^{-3}
 $N_m E_s$ (equivalent to 6 – 9 MHz $f_o E_s$), though there are a few isolated reports of layers extending beyond 20 MHz (Chandra and
Rastogi, 1975; Maeda and Heki, 2014). Here, we identify sporadic-E layers using a huge database of 29 million 162-MHz
Automatic Identification System (AIS) shipping transmissions collected over three days by a United States Coast Guard
(USCG) terrestrial monitoring network in the eastern United States and Puerto Rico. Within this dataset, most (>99%) links
20 are explained by line-of-sight, surface-wave and tropospheric propagation, but a small population cannot be explained by these
mechanisms. In total, 6677 signals were identified from ships located over 1000 km from the ground stations between 13 and
14 July 2021, and almost no long-distance links were received at night or at any time on 15 July. This coincides with intense
(saturated) sporadic-E in collocated ionosondes and in satellite radio occultation data. The density of these layers might exceed
27 MHz $f_o E_s$, or 9×10^{12} el. m^{-3} $N_m E_s$. AIS transmissions potentially provide an excellent means of identifying dense sporadic-
25 E layers globally.

1 Introduction

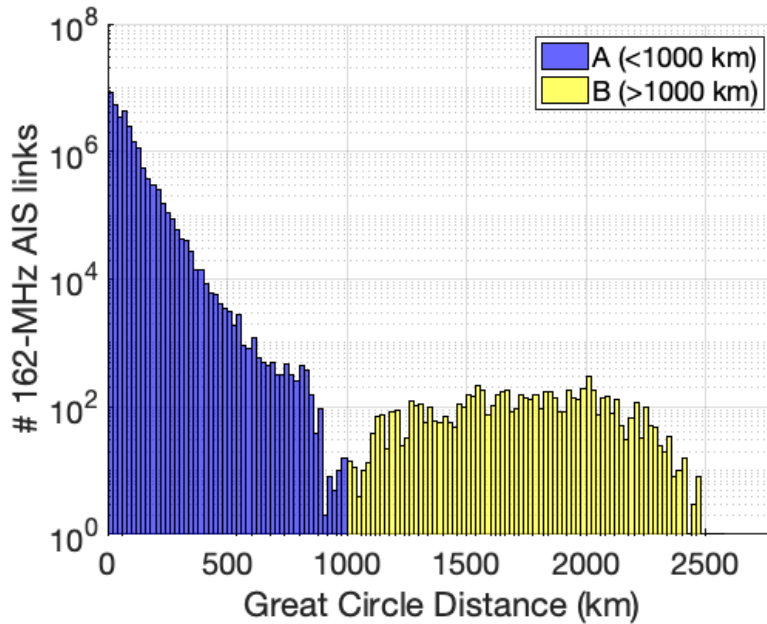
Automatic Identification System (AIS) transponders are designed to provide vessel position, identification and other
information to other ships and to coastal authorities (e.g. IMO, 2022). The system operates using Very High Frequency (VHF)
radio transmissions on two 25 kHz channels close to 162 MHz. AIS is required to be used on large ships, typically at the 12.5
30 Watt level. Many smaller vessels, including recreational boats, are also fitted with low power (~2 Watts) or passive AIS
systems. The United States Coast Guard (USCG) operates a network of land-based AIS monitors, and provided three days of
data from stations in the eastern USA and Puerto Rico for this study (13 – 15 July 2021) along with satellite-received data used
as an independent point-of-reference. The exact station locations are not disclosed by request of the data provider.

Occasionally, signals are identified at long distances of 1000 km or more. This long distance propagation is surprising since
35 signals at 162 MHz would typically be expected to pass through the ionosphere to space, rather than reflecting off and back to
Earth as skywaves. VHF signals do propagate over the horizon as surface waves and through tropospheric ducting (Ames et
al., 1955) but the distances are typically limited to a few hundred kilometers or less. We note that very long distance
propagation of VHF signals has been reported in amateur radio databases. The “More Miles on VHF” database
(<https://mmonvhf.de/odx.php>) reports links up to 4966 km. All the top 100 links listed in that dataset occurred between May
40 and August, which is coincident with the sporadic-E season in the northern hemisphere.

This study evaluates the possibility that extremely dense, low-altitude ionospheric layers (known as sporadic-E) could provide
a skywave propagation path that would explain the long-range USCG AIS observations. Sporadic-E layers were first identified
using ionosondes (e.g Thomas and Smith, 1959). These layers are known to occur frequently, especially at mid-latitudes during
45 the daytime in summer (Wu et al., 2005; Chu et al, 2014; Arras and Wickert, 2018), with the cause believed to be redistribution
of existing plasma into thin, dense layers by wind shears (see reviews by Whitehead, 1970; Mathews, 1998; Haldoupis, 2011
for more details). The process may be aided by the presence of long-lived metallic ions deposited in the lower ionosphere by
meteors (e.g. Maruyama et al., 2008). Recently, Yamazaki et al. (2022) presented convincing evidence linking sporadic-E to
zonal wind shears using ICON/MIGHTI interferometer wind profile data and COSMIC-2/RO retrieved electron density
50 profiles. Deacon et al. (2022) have linked sporadic-E to long-distance amateur radio propagation reports on frequencies up to
70 MHz, while amateur groups themselves routinely map sporadic-E (e.g. Sampol, retrieved 2022). There are some
observations of extremely high sporadic-E critical frequency (f_oE_s), for example Chandra and Rastogi (1975), Maeda and Heki
(2014) and Shinagawa et al. (2021) observed and modeled $f_oE_s > 20$ MHz. However the phenomenon remains unpredictable,
and its occurrence, intensity and spatial extent are not well constrained observationally, in particular over the oceans.

55 **2. Long distance AIS links**

The USCG AIS link dataset produced by stations in eastern USA contains almost 29 million links over three days. Most of the
received data (>99%) are from ships within 300 km great circle distance of the USCG stations. The data were processed taking
care to remove any repeated signals as well as AIS signals emitted from search and rescue aircraft. A histogram of observed
AIS link distances is shown in Figure 1.



60

Figure 1: Histogram of AIS link great circle distances from USCG network in Eastern USA covering 13 -15 July 2021. Population A (<1000 km) might be explained by line-of-sight propagation, surface waves and tropospheric ducting, while Population B (>1000 km) is not predicted by those mechanisms. The longest reported link in our dataset covered a great-circle distance of 5453 km (not shown).

65

The ranges between a few hundred km and ~1000 km are likely caused by tropospheric refraction phenomena (e.g. ducting) and occur beyond normal line of sight, but are typically confined to paths within a few hundred km of the coastline. As can be seen, there is a distinct population of links observed above around 1000 km great circle distance, extending up to a maximum of 5453 km (6692 links >1000 km in total). A time series of these links is shown in Figure 2, with a representative day/night

70

boundary for Bar Harbor, ME included for reference.

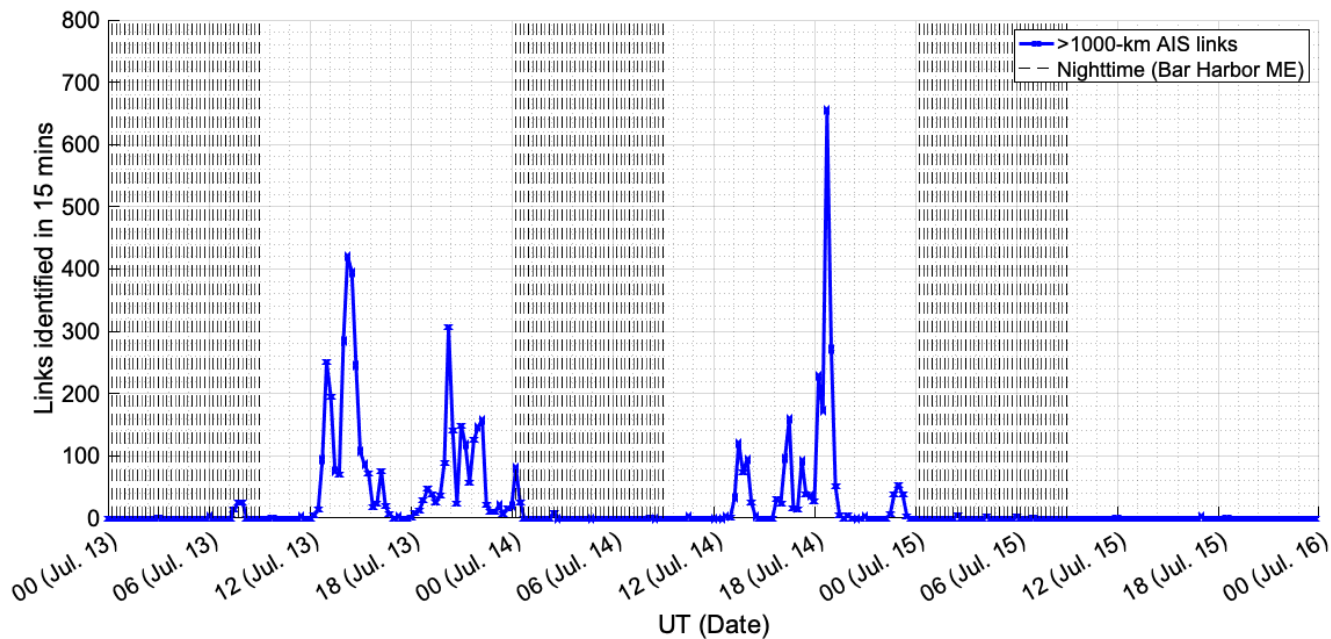
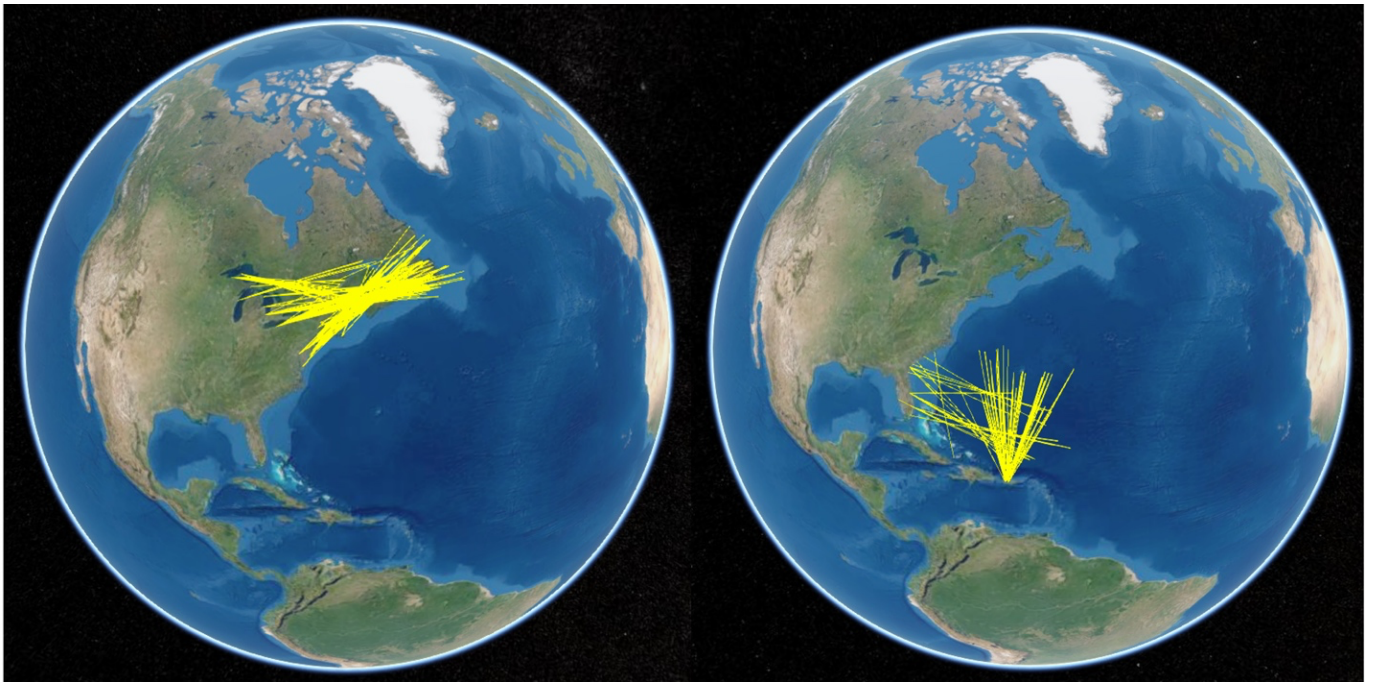


Figure 2 shows AIS links received from ships at over 1000-km great circle distance from USCG stations between 13 – 15 July 2021. The results are binned in 15-minute increments. Nighttime at Bar Harbor, ME is indicated by black dashes.

75

Almost all (6677) of the long distance AIS links were detected on 13 and 14 July, with almost none seen at night or on 15 July. The maximum number of long-range links in a 15-minute window was 655, between 18:45-19:00 UT on 14 July, and the second-most was 421, between 14:15 – 14:30 UT on 13 July. Snapshots of these intervals are shown in Figure 3.



80 **Figure 3** shows the long-distance AIS links identified by USCG stations (left) between 18:45-19:00 UT on 14 July 2021 and (right) between 14:15 – 14:30 UT on 13 July 2021.

These snapshots indicate the long-distance AIS propagation is related to a spatially confined phenomenon, intermittently present over an area of hundreds or thousands of kilometers during daytime hours.

85

3. Data identifying tropospheric ducting

Tropospheric ducting is estimated using meteorological reanalysis temperature, pressure and humidity data. Here we computed
 90 ducting using the European Centre for Medium-Range Weather Forecasts (ECMWF) 5th Generation Reanalysis (ERA5) described by Hersbach et al. (2018). These data were processed to compute the maximum strength of all RF/tropospheric ducts that appear at a single grid point and time. The maps of modified refractivity were derived from hourly forecast data using the full resolution 137 level temperature and specific humidity data provided on a regular Gaussian grid, at hourly resolution. Ducting maps at 19 UT on 14 July and 14 UT on 13 July are shown in Figure 4.

95

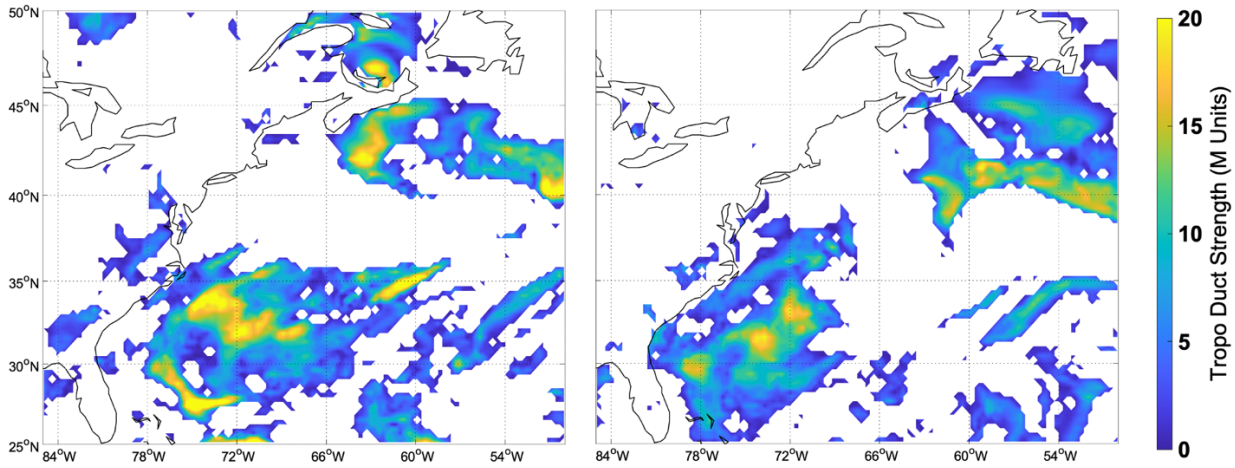


Figure 4 shows tropospheric ducting maps of modified refractivity (in M units) based on temperatures, pressures and humidities in ERA5 reanalysis data. The left panel shows 19 UT on 14 July 2021, while the right panel shows 14 UT on 13 July 2021.

By showing the tropospheric ducting strength overlaid with the received position reports from land-based AIS receivers, one can see the correlations near shore of the tropospheric ducting that helps to extend the RF propagation range. It is also apparent that tropospheric ducting could not be responsible for the very long range AIS receptions that are the main focus of this publication. To illustrate this, a time series of the median nonzero tropospheric duct strength is shown in Figure 5.

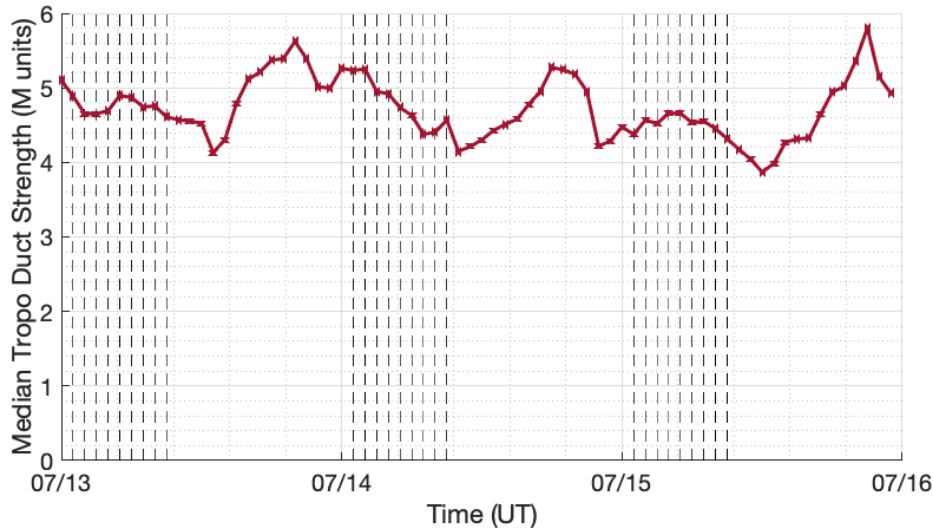


Figure 5: Median nonzero tropospheric duct strength between 25 – 50° N and 85 – 50° E between 13 – 15 July 2021. Nighttime at Bar Harbor, ME, is shown by black dashed lines.

110 As can be seen in Figure 5, tropospheric ducting peaks on 15 July 2021, when almost no long-distance AIS links were observed. Therefore a different explanation is needed for the >1000 km propagation observed on 162 MHz.

4. Data identifying sporadic-E

Data from groundbased Digisondes and from Constellation Observing System for Meteorology, Ionosphere, and Climate (COSMIC-2) radio occultations are used to identify the cause of the observed long-distance AIS links. Figure 6 shows
115 Digisonde peak sporadic-E plasma frequency (f_oE_s) from Millstone Hill, MA; Wallops Island, VA; and Ramey, Puerto Rico.

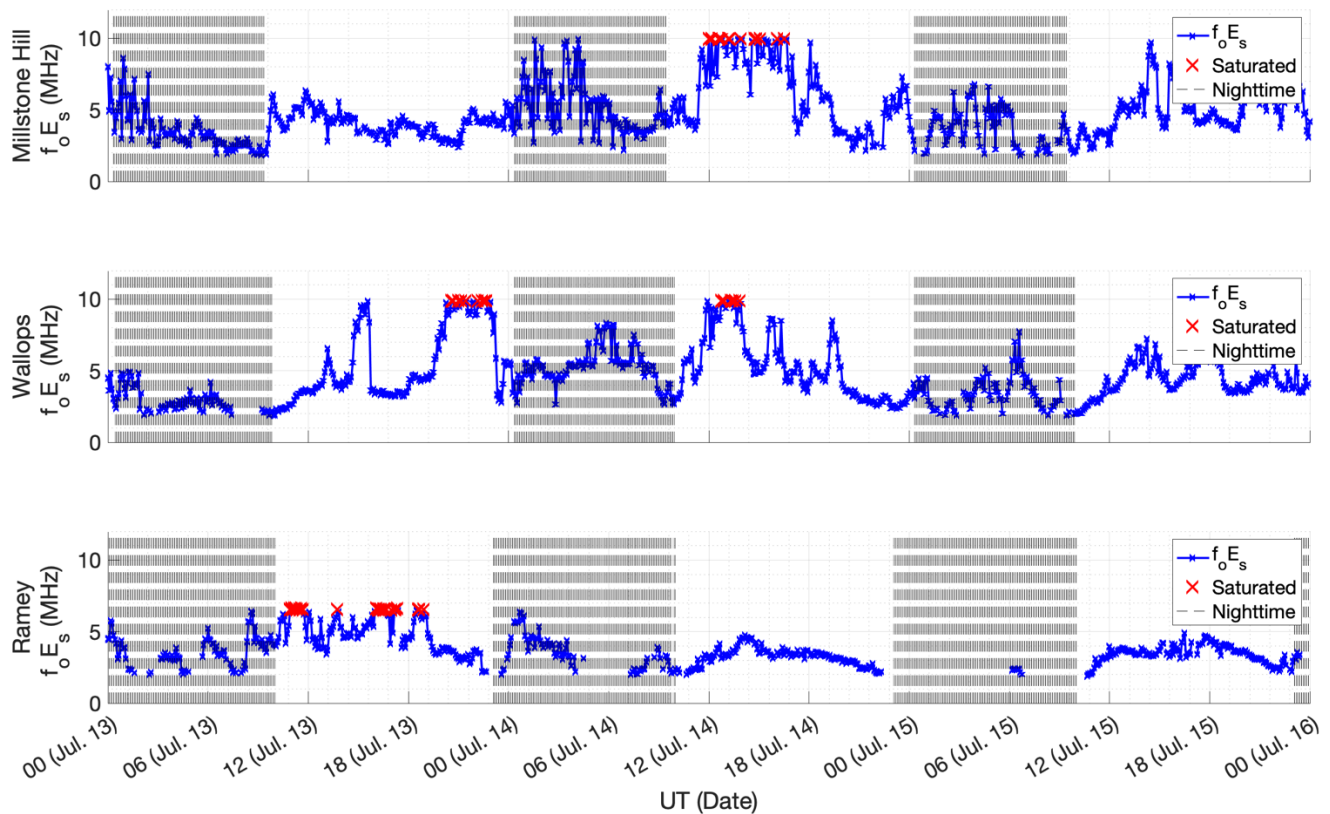


Figure 6: Autoscaled sporadic-E data from the Millstone Hill, Wallops and Ramey Digisondes. Saturated measurements where f_oE_s exceeded the ionosonde's frequency range are shown in red. Local nighttime is indicated by black dashed lines.

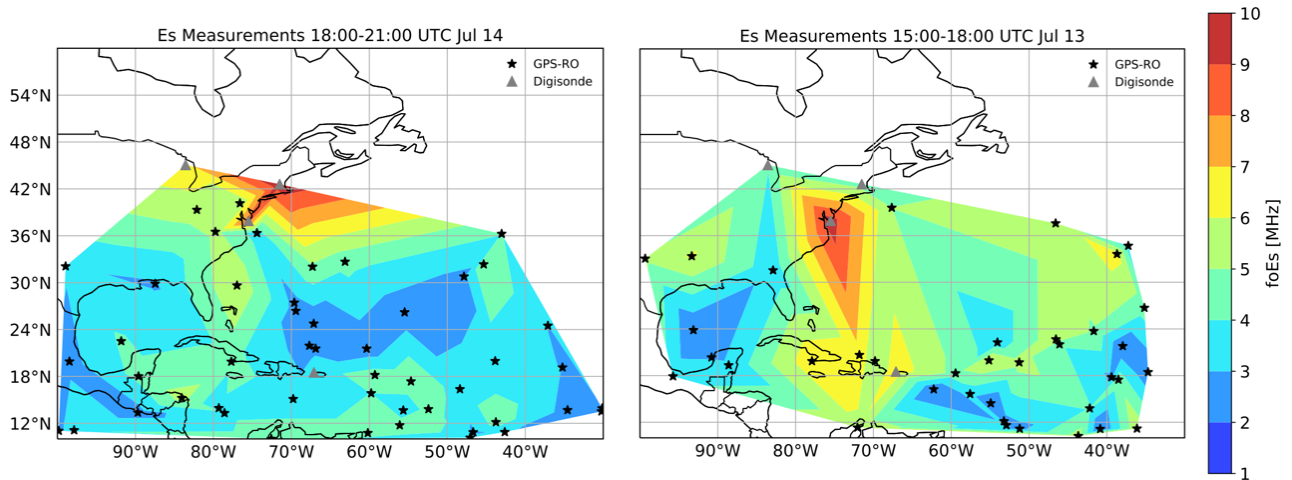
120

The Digisonde f_oE_s values saturate (i.e. they reach the maximum observable value of 10 MHz at Millstone and Wallops, or 6.5 MHz at Ramey) during the daytime at Wallops and Ramey on 13 July, and at Wallops and Millstone on 14 July. The data do

not saturate at any station either at night or at any time on 15 July. This is consistent with the trend seen in the long distance AIS link data.

125

Spatial maps of sporadic-E are produced by combining COSMIC-2 RO data with Digisonde measurements, using the S_4 -based approach described by Yu et al. (2020). These maps are produced at three-hour cadence to increase the number of local observations in the region. Maps corresponding to the two maximum AIS link times are shown in Figure 7.



130 Figure 7 shows sporadic-E maps based on Digisonde and COSMIC-2 RO S_4 data for 18-21 UT on 14 July 2021 and 15-18 UT on 13 July 2021.

Given the spatial and temporal limitations of the data coverage, the sporadic-E maps show remarkably good agreement with the AIS long distance link data shown in Figure 3. While the COSMIC-2 RO data is useful in identifying the presence or
135 absence of sporadic-E (Carmona et al., 2022), predicting f_oE_s magnitudes from RO data is more difficult (Gooch et al., 2020). This is especially true of strong sporadic-E layers that tend to saturate the S_4 amplitude scintillation (Stambovsky et al., 2021; Yu et al., 2020). Therefore, we have higher confidence in the f_oE_s estimates near Digisondes than in the locations driven strictly by RO data.

140 5. Discussion and conclusions

The analysis indicates that long distance 162 MHz AIS links observed in the western Atlantic region on 13 and 14 July 2021 are associated with sporadic-E layers. This is surprising given that signals at such high frequency are typically expected to

pass through the ionosphere. The available vertical incidence ionosonde data in the region saturate at or below 10 MHz, so it is not possible to determine the true value of f_oE_s during these periods.

145

If we assume a layer height of 100-km, and take the shortest AIS paths within the anomalous distribution at around 1200-km (see Figure 1), we can estimate an angle of incidence $\sim 9.5^\circ$ (neglecting refraction and curvature). In this case the secant law (see Han, 1970 for details) implies $f_oE_s \geq 27$ MHz, or 9×10^{12} el. m^3 . This is almost an order of magnitude larger than is typically expected, though there have been observations of $f_oE_s > 20$ MHz (Chandra and Rastogi, 1975; Maeda and Heki, 2014).

150

There are several challenges inherent in using AIS data to identify long distance propagation. In some cases the system is subject to spoofing, either of the signals themselves or the GNSS signals they rely upon. There are also occasional transmission errors that still pass the checksum. Therefore accurate determination of long distance propagation requires the identification of multiple unique vessels over similar geometries. To avoid random errors, it is useful to observe multiple reports from a given ship over a few minutes; to observe consistency between the reported position, time, speed and course; and to cross-reference with other information, such as ports of call. We have applied these techniques in filtering the AIS data, but the removal of erroneous data remains an open challenge.

155

In summary, long distance AIS links appear to be a promising means of observing dense sporadic-E layers. The data have several advantages, notably high power, high density of users and high cadence due to internationally mandated usage, and coverage over the oceans. The USCG dataset used here is not routinely available, but the protocol is public and transponders are widespread on ships and ground stations. Therefore much of the infrastructure is already in place to develop a worldwide monitoring network. This study indicates skywave propagation due to sporadic-E layers is possible at higher frequencies than we were able to find previously reported in the literature, though we have not performed an exhaustive search.

165

6. Code availability

Data analysis code available here: <https://github.com/alexchartier/sporadice>

170 7. Data availability

Digisonde data can be retrieved from <http://giro.uml.edu/didbase/scaled.php>. COSMIC-2 data are available from <https://doi.org/10.5065/t353-c093>, while the sporadic-E maps for our study are available at

<https://zenodo.org/record/6977022#.YvJkKuzMJb8>. Tropospheric ducting files are at:

<https://zenodo.org/record/7140002#.Yz3iqOzMJb8>. The AIS data used here are not accessible to the public or research

175 community, but it may be possible to obtain them from USCG by request. We note that public repositories of other VHF
radio link data exist that may be useful for independent validation of these findings (e.g. <https://www.wsprnet.org/drupal/>
and <https://pskreporter.info/pskmap.html>). The full set of >1000 km links can be viewed at <https://youtu.be/AcNzM03zZP8>.

8. Author Contribution

180 A.T. Chartier wrote the manuscript, produced figures 1-6, and submitted the paper. T.R. Hanley performed the AIS data
analysis and first raised the possibility that these long-distance links were related to ionospheric phenomena. D.R. Emmons
performed the ionosonde-GNSS sporadic E analysis and produced figure 7.

9. Competing Interests

185 The authors declare that they have no conflict of interest.

10. Acknowledgements

A.T. Chartier acknowledges support of NASA grant number 80NSSC21K1557.

190 References

- Ames, L. A., Newman, P., & Rogers, T. F. (1955). VHF tropospheric overwater measurements far beyond the radio horizon. *Proceedings of the IRE*, 43(10), 1369-1373.
- Arras, C., & Wickert, J. (2018). Estimation of ionospheric sporadic E intensities from GPS radio occultation measurements. *Journal of Atmospheric and Solar-Terrestrial Physics*, 171, 60-63.
- 195 Carmona, R. A., Nava, O. A., Dao, E. V., & Emmons, D. J. (2022). A Comparison of Sporadic-E Occurrence Rates Using GPS Radio Occultation and Ionosonde Measurements. *Remote Sensing*, 14(3), 581.
- Chandra, H., & Rastogi, R. G. (1975). Blanketing sporadic E layer near the magnetic equator. *Journal of Geophysical Research*, 80(1), 149-153.
- 200 Chu, Y. H., Wang, C. Y., Wu, K. H., Chen, K. T., Tzeng, K. J., Su, C. L., ... & Plane, J. M. C. (2014). Morphology of sporadic E layer retrieved from COSMIC GPS radio occultation measurements: Wind shear theory examination. *Journal of Geophysical Research: Space Physics*, 119(3), 2117-2136.

- Deacon, C.; Mitchell, C.; Watson, R. Consolidated Amateur Radio Signal Reports as Indicators of Intense Sporadic E Layers. *Atmosphere* 2022, 13, 906. 10.3390/atmos13060906
- 205 Gooch, J. Y., Colman, J. J., Nava, O. A., & Emmons, D. J. (2020). Global ionosonde and GPS radio occultation sporadic-E intensity and height comparison. *Journal of Atmospheric and Solar-Terrestrial Physics*, 199, 105200.
- Haldoupis, C. (2011). A tutorial review on sporadic E layers. *Aeronomy of the Earth's Atmosphere and Ionosphere*, 381-394.
- International Maritime Organization, 2022. AIS Transponders. Retrieved from <https://www.imo.org/en/OurWork/Safety/Pages/AIS.aspx> on 1 June 2022.
- 210 Han, Ruey-Yuan, "A Study of The Secant Law for Sporadic E" (1970). All Graduate Theses and Dissertations. 3322. <https://digitalcommons.usu.edu/etd/3322>
- Hersbach, H., Bell, B., Berrisford, P., Biavati, G., Horányi, A., Muñoz Sabater, J., Nicolas, J., Peubey, C., Radu, R., Rozum, I., Schepers, D., Simmons, A., Soci, C., Dee, D., Thépaut, J.-N. (2018): ERA5 hourly data on pressure levels from 1959 to present. Copernicus Climate Change Service (C3S) Climate Data Store (CDS). 10.24381/cds.bd0915c6
- 215 Maeda, J., & Heki, K. (2014). Two-dimensional observations of midlatitude sporadic E irregularities with a dense GPS array in Japan. *Radio Science*, 49(1), 28-35.
- Maruyama, T., Kato, H., & Nakamura, M. (2008). Meteor-induced transient sporadic E as inferred from rapid-run ionosonde observations at midlatitudes. *Journal of Geophysical Research: Space Physics*, 113(A9).
- Mathews, J. D., (1998). Sporadic E: current views and recent progress. *Journal of atmospheric and solar-terrestrial physics*, 60(4), 413-435.
- 220 Sampol, G., (retrieved 10 June 2022). "144 MHz Sporadic-E QSO maps. Years 2003 to 2021." <https://www.dxmaps.com/esmaps/oldesmaps.html>
- Shinagawa, H., Tao, C., Jin, H., Miyoshi, Y., & Fujiwara, H. (2021). Numerical prediction of sporadic E layer occurrence using GAIA. *Earth, Planets and Space*, 73(1), 1-18.
- 225 Stambovsky, D. W., Colman, J. J., Nava, O. A., & Emmons, D. J. (2021). Simulation of GPS radio occultation signals through Sporadic-E using the multiple phase screen method. *Journal of Atmospheric and Solar-Terrestrial Physics*, 214, 105538.
- Thomas, J. A., & Smith, E. K. (1959). A survey of the present knowledge of sporadic-E ionization. *Journal of Atmospheric and Terrestrial Physics*, 13(3-4), 295-314.
- Whitehead, J. D., (1970). Production and prediction of sporadic E. *Reviews of Geophysics*, 8(1), 65-144.
- 230 Wu, D. L., Ao, C. O., Hajj, G. A., de La Torre Juarez, M., & Mannucci, A. J. (2005). Sporadic E morphology from GPS-CHAMP radio occultation. *Journal of Geophysical Research: Space Physics*, 110(A1).
- Yamazaki, Y., Arras, C., Andoh, S., Miyoshi, Y., Shinagawa, H., Harding, B. J., ... & Stolle, C. (2022). Examining the Wind Shear Theory of Sporadic E with ICON/MIGHTI Winds and COSMIC-2 Radio Occultation Data. *Geophysical Research Letters*, e2021GL096202.
- 235 Yu, B., Scott, C. J., Xue, X., Yue, X., & Dou, X. (2020). Derivation of global ionospheric Sporadic E critical frequency (foEs) data from the amplitude variations in GPS/GNSS radio occultations. *Royal Society open science*, 7(7), 200320.

