

Style Definition: Comment Text

# Numerical Model Generation of Test Frames for Pre-launch Studies of EarthCARE's Retrieval Algorithms and Data Management System

Zhipeng Qu<sup>1</sup>, David P. Donovan<sup>2</sup>, Howard W. Barker<sup>1</sup>, Jason N. S. Cole<sup>1</sup>, Mark W. Shephard<sup>1</sup>, Vincent Huijnen<sup>2</sup>

<sup>1</sup> Environment and Climate Change Canada, Toronto, ON, Canada

<sup>2</sup> Royal Netherlands Meteorological Institute, De Bilt, Netherlands

Correspondence to: Howard W. Barker (howard.barker@canada.ca)

**Abstract.** The *Earth Cloud, Aerosol and Radiation Explorer* (EarthCARE) satellite consists of active and passive sensors whose observations will be acted on by an array of retrieval algorithms. EarthCARE's retrieval algorithms have undergone pre-launch verifications within a virtual observing system that consists of 3D atmosphere-surface data produced by the Global Environmental Multi-scale (GEM) ~~NWP~~[Numerical Weather Prediction \(NWP\)](#) model, and instrument simulators that when applied to NWP data yield synthetic observations for EarthCARE's four sensors. Retrieval algorithms operate on the synthetic observations and their estimates go into radiative transfer models that produce top-of-atmosphere solar and thermal broadband radiative quantities, which are compared to synthetic broadband measurements thus mimicking EarthCARE's radiative closure assessment. Three high-resolution test frames were simulated; each measures ~6,200 km along-track by 200 km across-track. Horizontal grid-spacing is 250 m and there are 57 atmospheric layers up to 10 mb. The frames span wide ranges of conditions and extend over: i) Greenland to The Caribbean crossing a cold front off Nova Scotia; ii) Nunavut to Baja California crossing over Colorado's Rooky Mountains; and iii) central equatorial Pacific Ocean that includes a mesoscale convective system. This report discusses how the test frames were produced and presents their key geophysical features. All data are publicly available and, owing to their high-resolution, could be used to simulate observations for other measurement systems.

## 1. Introduction

The *Earth Cloud, Aerosol and Radiation Explorer* (EarthCARE) satellite mission, which is scheduled for launch in ~~late 2023~~[early- to mid-2024](#), is a joint venture funded by the European Space Agency (ESA) and Japanese Aerospace Exploration Agency (JAXA) (Illingworth et al. 2015). The combination of Dopplerized cloud profiling radar (CPR), high-spectral-resolution lidar (ATLID), and multi-spectral imager (MSI) will facilitate synergistic retrieves of profiles of cloud, aerosol, and precipitation properties. Broadband top-of-atmosphere (TOA) radiances and fluxes calculated using these profiles will be compared to near-coincidental observations made by EarthCARE's broadband radiometer

Formatted: Font: Times New Roman

Formatted: Font: Times New Roman

(BBR). This radiative closure assessment of retrievals will provide continuous feedback of performance to algorithm developers, as well as guidance to data users.

35 ESA's pre-launch phase of EarthCARE has relied much on *end-to-end simulation* of ~~the measurement, retrieval meas-~~  
~~urements, retrievals,~~ and data ~~management systems archiving procedures~~. The primary objective was to build a virtual  
observing system in which retrieval algorithms, developed expressly for EarthCARE, get applied to synthetic obser-  
40 vations that resemble closely those that will be made by all of EarthCARE's sensors. The initial step of this multi-stage  
process is definition of ~~surface-atmosphere-surface~~ conditions. The obvious starting point was single homogeneous  
columns, but this quickly evolved into numerical simulation of realistic conditions for domains that span substantial  
portions of EarthCARE's planned orbit. These ~~surface-atmosphere-ensembles-surface conditions~~ are then operated on  
45 by instrument simulators that yield synthetic observations suitable for ingestion by retrieval algorithms. One could stop  
here and assess performance by comparing retrieved geophysical quantities to their simulated counterparts (cf. Mason  
et al. 2023), but ~~obviously in~~ the real mission ~~lacks this luxury is impossible to do routinely~~. As such, the next step in  
the *end-to-end* simulation chain is application of radiative transfer models to retrieved geophysical properties. This  
produces radiometric quantities that are commensurate with synthetic BBR observations that, ~~in turn, come derive~~ from  
50 application of similar radiative transfer models directly to the ~~initially~~-simulated atmosphere-surface fields. The com-  
parison of these quantities defines ~~EarthCARE's the~~ radiative closure assessment of ~~its EarthCARE's~~ retrievals.

EarthCARE's data-handling system processes observations ~~in into six~~ "frames", ~~of which there are six~~ per orbit. As  
such, frames are ~6,500 km in the along-track direction. Their across-track width is 150 km as defined by the MSI's  
swath. Almost all measured and retrieved products are reported on the *Joint Standard Grid* (JSG), whose resolutions  
55 are ~1 km in both horizontal directions and 0.5 km in the vertical. It was established early on, by EarthCARE's science  
and engineering teams, that synthetic observations for end-to-end experiments need to cover entire frames and be  
resolved horizontally to better than 1 km. Environment and Climate Change Canada's ~~numerical weather prediction-~~  
~~Numerical Weather Prediction~~ (NWP) model, known as the Global Environment Multiscale (GEM) model (Côté et al.,  
1998, Girard et al., 2014), was used to produce three ~~appropriately sized such~~ test frames with horizontal grid-spacings  
of 250 m and 57 atmospheric layers up to 10 mb. The frames include wide ranges of conditions and extend from: i)  
60 Greenland to The Caribbean, crossing a cold front off Nova Scotia; ii) Nunavut to Baja California, crossing over Col-  
orado's Rooky Mountains; and iii) central equatorial Pacific Ocean, including a mesoscale convective system. The

primary purposes of this paper is to report on how these frames were constructed, their cloud, aerosol, and surface properties, as well as adjustments that were made to GEM's initial estimates of ice cloud particle sizes.

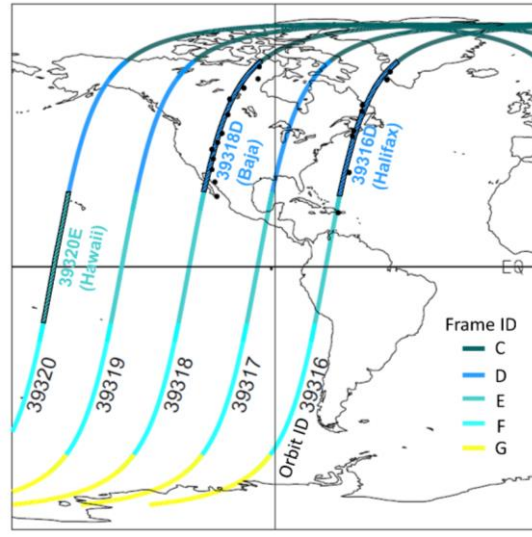
60 Full-frame datasets produced by GEM serve as ~~inputs~~input to the *EarthCARE simulator* (ECSIM) (Voors et al. 2007). ECSIM consists of radiative transfer and instrument models that are coupled to databases of optical and microwave scattering properties. ~~Once bulk~~Bulk properties of atmospheric attenuators, such as ~~GEM's~~3D distributions of ~~GEM's~~ cloud water contents (CWC), are ~~parsed into bin-resolved~~used in conjunction with assumed aerosol/cloud size distributions, ~~they are used~~ in order for ECSIM, ~~which produces to produce~~ physically-consistent synthetic measurements  
65 ~~to be made by for each of~~ EarthCARE's sensors. Production of simulated L1 EarthCARE data using ECSIM is described by (Donovan et al., ~~2023~~), 2023. Use of high-resolution full-frame data in ECSIM not only allows assessment of the quality of EarthCARE's retrievals, it also facilitates meaningful estimation of required computational resources and processing times for each algorithm.

The following section discusses how the test frames were defined. This is followed by descriptions of GEM and how  
70 it was configured and used for this study. Aerosols and surface optical properties were added to GEM's atmospheres, and these procedures are discussed in sections 4 and 5. Section 6 presents, and to a limited extent verifies, the simulated frames. Section 7 discusses issues with, and subsequent modifications to, GEM's simulated ice clouds. Concluding remarks and information regarding acquisition of test frame data are provided in the final section.

Formatted: English (United States)

Formatted: Font: Times New Roman

Formatted: Font: Times New Roman



75 **Figure 1:** Examples of several successively numbered EarthCARE orbits as provided by ESA. Frames are colour-coded with the test frames labelled as 39316D (Halifax), 39318D (Baja), and 39320E (Hawaii).

## 2. Satellite orbit selection

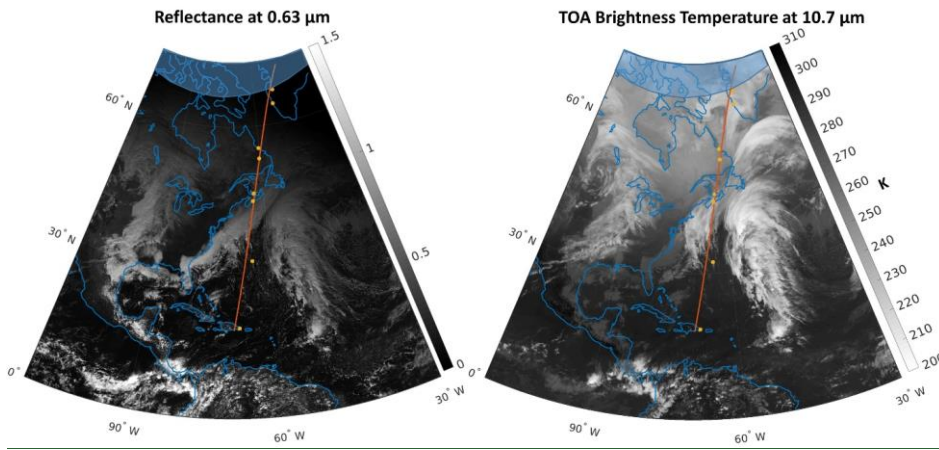
80 *Figure 1* shows several EarthCARE orbits, numbered 39316 through 39320. An orbit consists of eight frames; each frame's number having an appending letter from A to H. Frames are colour-coded and measure ~5,000 km along-track and 150 km across-track. Both ends of a frame overlap neighbouring frames by ~600 km for a total length of ~6,200 km. All frames selected for testing correspond to local afternoon descending conditions (i.e., opposite to the A-Train).

~~This is because~~ Assuming that night-time atmospheric conditions are not fundamentally different from day-time conditions, night retrievals can be approximated by neglecting MSI solar channels and solar ~~background~~ back-ground for ATLID. Test frames should cover wide varieties of clouds, surface, meteorological, and solar illumination conditions.

85 Locations and times needed to initialize simulations of test frames have been established by examining GOES satellite imagery and surface meteorological data. Also, A-Train's active sensor observations had to intersect the frame.

Formatted: Font: Times New Roman

Formatted: Font: Times New Roman



**Figure 2:** GOES-13 TOA reflectance at 0.63  $\mu\text{m}$  and brightness temperature at 10.7  $\mu\text{m}$  on 2014-12-07 at 18h00 UTC. Red lines indicate EarthCARE's track for the *Halifax frame* (see orbit 39316D in *Figure 1*). Yellow dots mark locations of nearby surface meteorological stations. Blue shaded areas indicate GOES-13's northern limit of observation.

Formatted: Space After: 18 pt

Formatted: Font: Not Bold, Not Italic, English (United States)

**Table 1:** Surface conditions (observed / modelled) near the *Halifax frame* (see orbit 39316D in *Figure 1*) for 2014-12-07 at 18h00 UTC

station	Temperature (°C)	Dew Point (°C)	Pressure (hPa)	Visibility (km)	Wind Direction	Wind Speed (km/h)	Conditions
Kangerlussaq	-15.0 / -16.3	-20.0 / -18.9	1006 / 1006	=	E	18.5	Mostly cloudy
Nuuk	-4.0 / -2.6	-13.0 / -6.1	1000 / 1000	=	ESE	33.3	Low Drifting Snow + Snow
Hopedale	-17.6 / -15.6	-23.9 / -21.1	1017 / 1022	=	SW	31.0	=
Goose Bay	-16.0 / -15.5	-24.0 / -18.6	1021 / 1024	24.1	WNW	22.2	Scattered Clouds
Charlottetown	-6.0 / -4.3	-11.0 / -8.8	1029 / 1029	24.1	NW	27.8	Mostly Cloudy
Halifax	-3.0 / -2.7	-6.0 / -7.2	1026 / 1028	24.1	NNW	31.5	Overcast
Bermuda	24.0 / 22.8	18.0 / 18.5	1009 / 1010	=	N	24.1	Scattered Clouds
Punta Cana	29.0 / 26.6	22.0 / 20.7	1012 / 1014	=	NE	18.5	Scattered Clouds

As *Figure 1* shows, frame 39316D extends from southern Greenland, across extreme eastern Canada, and ends in the Atlantic Ocean roughly 500 km north of Dominican Republic. Because it passes close to the city of Halifax, Nova Scotia, it is referred to hereinafter as the *Halifax frame*. *Figure 2* shows GOES-13 reflectances and TOA brightness temperatures for its 0.63  $\mu\text{m}$  and 10.7  $\mu\text{m}$  channels for 7-December-2014-12-07 at 18h00 UTC. *Table 1* lists surface conditions reported at 18h00 UTC by several meteorological stations close to the ground-track (see dots on both *Figure*

Formatted: Space Before: 18 pt

Formatted: Font: Times New Roman

Formatted: Font: Times New Roman

1 and Figure 2). This frame includes no Sun over Greenland, cold surface air over eastern Canada, a cold-front with deep clouds just off the coast of Nova Scotia, and scattered shallow clouds between Bermuda and Dominican Republic.

The second frame, 39318D, is referred to as the *Baja frame*. It stretches from the Canadian Arctic Archipelago, over central North America's Great Plains and Rocky Mountains, and ends near Baja California Sur. Figure 3 shows GOES-15 imagery and EarthCARE's ground-track for 2-April-2015-04-02 at 21h00 UTC. Table 2 lists surface conditions reported at 21h00 UTC. At the north end of this frame surface conditions were cold with blowing snow and largely cloudless. Through the Canadian Prairies there were low scattered clouds over snow-covered surfaces, while over the Rocky Mountains skies were very cloudy. In the southern reaches, skies were clear with some cirrus, and surface conditions were warm and very dry.

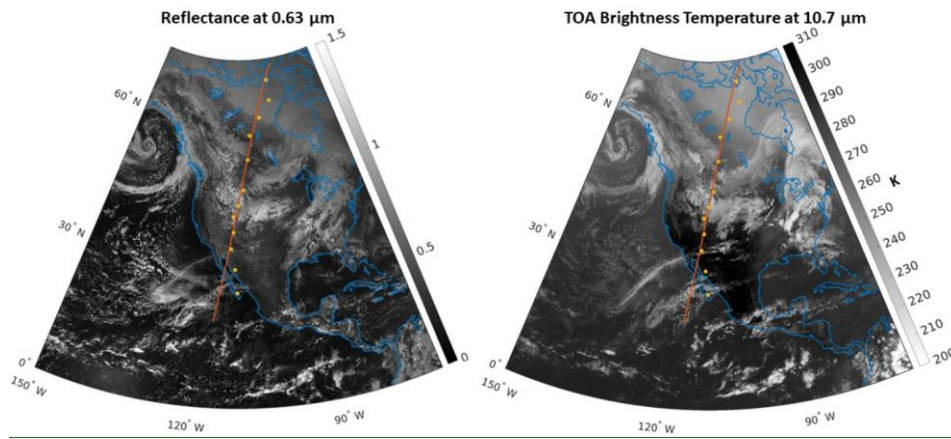


Figure 3: As in Figure 1 but this is GOES-15 imagery for 2015-04-02 at 21h00 UTC. Red lines indicate the Baja frame (see orbit 39318D in Figure 1).

Formatted: Space Before: 18 pt

Formatted: Space After: 18 pt

Formatted: Font: Times New Roman

Formatted: Font: Times New Roman

**Table 2:** As in Table 1 but these are for the Baja frame (see orbit 39318D in Figure 1) for 2015-04-02 at 21h00 UTC

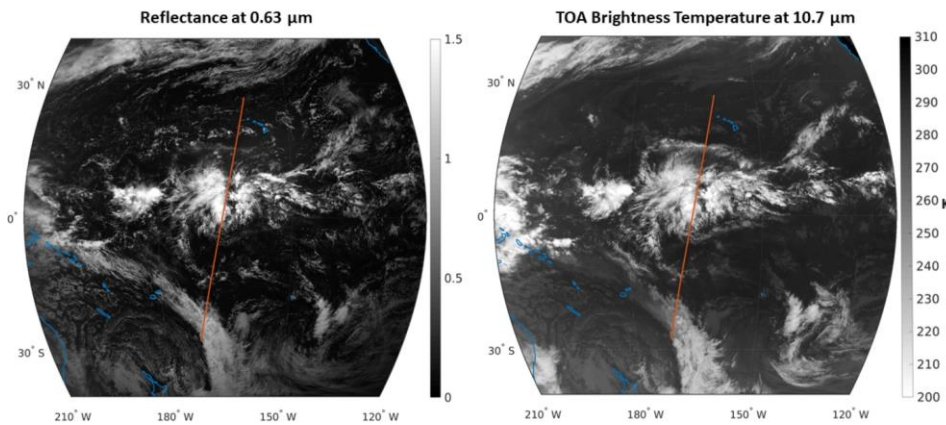
station	Temperature (°C)	Dew Point (°C)	Pressure (hPa)	Visibility (km)	Wind Direction	Wind Speed (km/h)	Conditions
Gjoa Haven	-26.0 / -24.6	-29.0 / -27.9	1024 / 1025	24.1	NNW	18.5	Ice Crystals
Baker Lake	-27.0 / -25.3	-31.0 / -29.0	1018 / 1022	4.8	N	40.7	SnowBlowing + Snow
Ennadai	-28.2 / -27.2	-32.2 / -31.6	1025 / 1028	=	NNW	50	Blowing
Key Lake	-11.0 / -12.1	-22.0 / -18.3	1025 / 1026	14.5	N	13	Clear
Saskatoon	0.0 / 1.0	-10.0 / -4.6	1024 / 1022	24.1	NE	11.1	Mostly Cloudy
Billings	7.2 / 8.2	-12.8 / -13.4	1021 / 1020	16.1	NW	25.9	Scattered Clouds
Big Piney	1.7 / 1.3	-16.1 / -11.1	1017 / 1022	16.1	NW	13	Overcast
Provo	8.0 / 0.0	-6.0 / -18.6	1019 / 1024	24.1	WNW	18.5	Mostly Cloudy
Page	18.9 / 18.6	-15.6 / -7.7	1008 / 1028	16.1	W	35.2	Clear
Phoenix	28.9 / 28.2	0.6 / 1.8	1010 / 1014	16.1	WNW	22.2	Mostly Cloudy
Hermosillo	34.0 / 30.5	2.0 / 3.3	1012 / 1011	16.1	SSW	29.6	Scattered Clouds
La Paz	31.0 / 21.6	9.0 / 15.9	1013 / 1014	16.1	W	11.1	Mostly Cloudy

The third frame, 39320E, as shown in Figure 1 and Figure 4, crosses the central Pacific Ocean, near Hawaii, on 24 June-2015-06-24. It is referred to as the Hawaii frame. GOES-15 imagery at 00h00 UTC on 24 June-2015-06-24 indicates that the central portion of the frame bisected a mesoscale convective system (MCS). North and south of the MCS, skies were mostly cloudless with some broken cloud at variable altitudes. There was also a weak frontal system at its southern extremity.

Formatted: Space Before: 18 pt

115

Formatted: Font: 11.5 pt, Font color: Dark Blue, English (United Kingdom)



Formatted: Space After: 18 pt

Formatted: Font: Times New Roman

Formatted: Font: Times New Roman

**Figure 4:** As in Figure 1 but this is GOES-15 imagery for 2015-06-24 at 0h00 UTC. Red lines indicate the Hawaii frame (see orbit 39320E in Figure 1).

120

### 3. NWP model set-up

The NWP model used to produce EarthCARE's test frames was Environment and Climate Change Canada's GEM model (Côté et al., 1998; Girard et al., 2014). GEM's dynamics are formulated in terms of the non-hydrostatic [extension of the](#) primitive equations with a terrain-following hybrid vertical grid. It can be run as a global model or a limited-area model and is capable of one-way self-nesting. For this work, GEM ran with four nested domains at horizontal grid-spacings  $\Delta x$  of 10, 2.5, 1, and 0.25 km, with 79 hybrid levels for the 10 km outer-domain and 57 for the other three.

The simulations at  $\Delta x$  of 2.5, 1 and 0.25 km used Milbrandt and Yau's (2005a,b) double-moment bulk cloud micro-physics scheme (referred to hereinafter as MY2), which predicts mass and number mixing ratio for each of six hydro-meteors classes: non-precipitating liquid droplets; ice crystals; rain; snow; graupel; and hail. For the  $\Delta x = 10$  km domain, the Kain-Fritsch (KF) deep convection scheme (Kain and Fritsch 1990; 1993) was used. Its liquid and ice CWCs are passed later to MY2 as non-precipitating liquid droplet and ice crystal categories.

In addition to MY2 and KF, a planetary boundary-layer scheme can also produce liquid and ice clouds along with fractional cloudiness for cumulus and stratocumulus clouds (Bélair et al. 2005). Moreover, a shallow convection scheme (Bélair et al. 2005) also supplies estimates of liquid and ice CWCs and cloud fractions for cells with shallow cumulus. [Both schemes are used in all domains.](#)

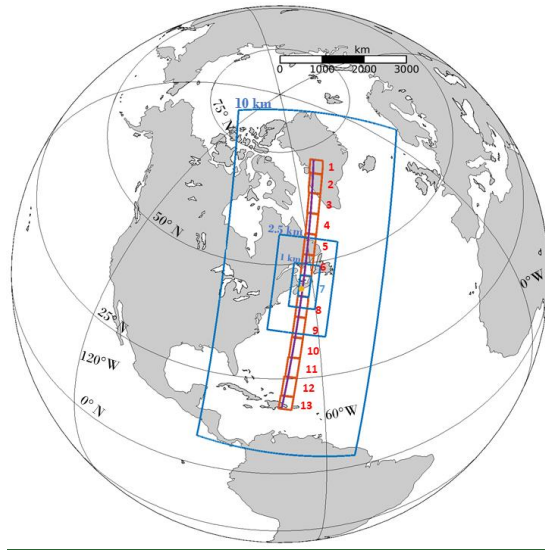
It was simplest to align GEM's *computational equator* approximately along EarthCARE's orbit, and divide 6,200 km long frames into 13 inner-[most](#) domains ( $\Delta x = 0.25$  km) and run them separately: 11 segments at 500 km along-track and both end segments at 350 km (all are 200 km wide). The downscaling transitional domains at  $\Delta x$  of 2.5 km and 1 km adapt themselves to the locations of the  $\Delta x = 0.25$  km domains. [\(both domains at  \$\Delta x\$  of 2.5 km and 1 km are repeated 13 times\).](#) A common  $\Delta x = 10$  km domain was used for all 13 segments. [Figure 5](#) illustrates this configuration, and [Table 3](#) summarizes domain sizes and  $\Delta x$ . Finally, the 13 inner-[most](#) domains are simply concatenated to form 6,200 km frames. While this forms discontinuities, they are not a serious hindrance for the task at hand.

Field Code Changed

Formatted: Font: Times New Roman

Formatted: Font: Times New Roman





**Figure 5:** Downscaling domains for the *Halifax frame* (39316D). Blue rectangles delineate successive downscaling domains that culminate in the 7<sup>th</sup> innermost domain whose horizontal grid-spacing is  $\Delta x = 0.25$  km. Red rectangles are the 12 other innermost domains for this frame. EarthCARE's ground-track is indicated by the purple line, which is 60 km west of centre.

Simulations for the *Halifax frame* (39316D) were initialized at 12h00 UTC on ~~07-Dec-2014-12-07~~ and saved at 17h30 UTC. Likewise, the *Baja frame* (39318D) simulations were initialized at 12h00 UTC ~~02-Apr-2015-04-02~~ and saved at 21h00 UTC, while the *Hawaii frame* was initialized at 12:00 UTC ~~23-Jun-2015-06-23~~ and saved at 00h00 UTC on ~~24-Jun-2015-06-24~~. Data for all three frames are ~~freelypublicly~~ available. ~~FilesVariables~~ include CWC, number concentration, and effective radius  $R_{eff}$  for the six aforementioned hydrometeor types. Saved variables are listed in the Appendix.

Formatted: Space After: 18 pt

Formatted: Font color: Auto

Formatted: Font: Times New Roman

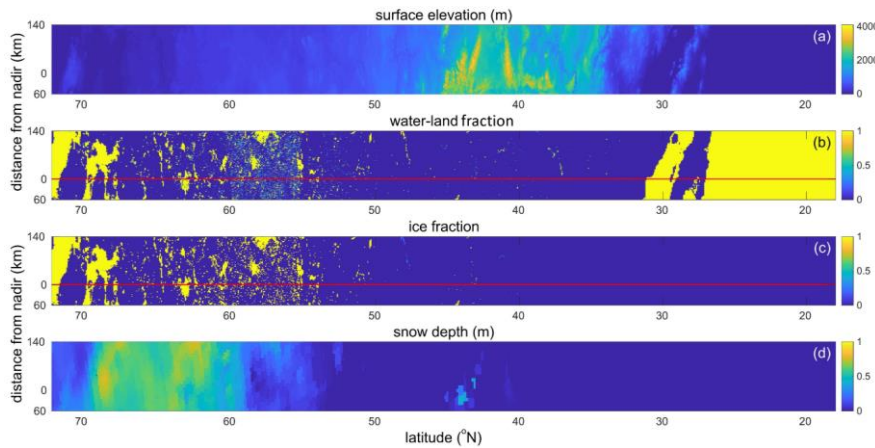
Formatted: Font: Times New Roman

**Table 3:** Sizes of GEM's downscaling domains (see *Figure 5*) and their horizontal resolutions

<u>description</u>	<u>domain size (km) along-track x across-track</u>	<u>number of vertical layers</u>	<u>horizontal grid-spacing (km)</u>
<u>downscaling domain 1</u>	<u>8,600 x 3,600</u>	<u>79</u>	<u>10</u>
<u>downscaling domain 2</u>	<u>2,250 x 1,350</u>	<u>57</u>	<u>2.5</u>
<u>downscaling domain 3</u>	<u>1,000 x 600</u>	<u>57</u>	<u>1</u>
<u>innermost domains 1 and 13</u>	<u>350 x 200</u>	<u>57</u>	<u>0.25</u>
<u>innermost domains 2 to 12</u>	<u>500 x 200</u>	<u>57</u>	<u>0.25</u>

#### 4. Shortwave optical properties for land surfaces

GEM's snow-free surface albedos were replaced by those based on MODIS's MCD43GF 1 km resolution bidirectional reflectance distribution function (BRDF) product for the period 2002 to 2013 (Schaaf et al. 2002). These data were interpolated, via nearest neighbour, to 0.25 km. Conditions for the *Baja* frame are shown here because it is primarily over land; the others are mostly over ocean.



**Figure 6:** All panels are for the *Baja* frame (see *Figure 1* and *Figure 3*) and each panel's title is self explanatory. For (b) and (c), blue (fraction of 0) corresponds to entirely land and yellow (fraction of 1) to either entirely water or entirely ice.

*Figure 6a* illustrates the wide range of surface conditions for the *Baja* frame. The Rocky Mountains are crossed near 40° N, but this being mid-springtime only small amounts of mountain snow remain. *Figure 6b* highlights the distribution of freshwater lakes in the Canadian Shield; *Figure 6c* shows that most are frozen and snow-covered. From

Formatted: Font: Times New Roman

Formatted: Font: Times New Roman

170 *Figure 6c* it is clear that shallow snow covers most of the Canadian Prairies with deeper snow north of the tree-line, which for this frame is close to 60° N (see 0.63 μm reflectances in *Figure 3*).

Following Schaaf et al. (2002), spectral-dependent black-sky albedos are defined as

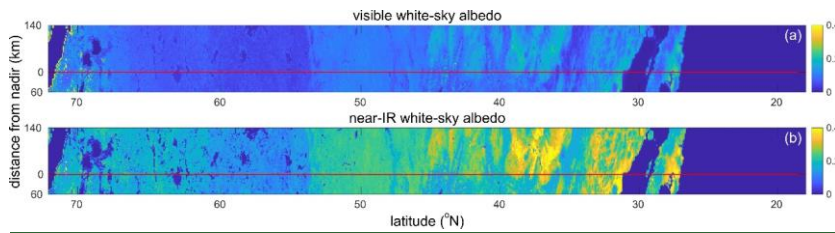
$$\alpha_{bs}(\theta_0) = \alpha_1 + \alpha_2(-0.007574 - 0.070987\theta_0^2 + 0.307588\theta_0^3) + \alpha_3(-1.284909 - 0.166314\theta_0^2 + 0.041840\theta_0^3), \quad (1)$$

where  $\theta_0$  is solar zenith angle in radians, and  $\alpha_1$ ,  $\alpha_2$ , and  $\alpha_3$  are separate sets of spectral-dependent BRDF kernel weights for spectral ranges 300 - 700 nm and 700 - 50,000 nm. Corresponding white-sky albedos are defined as

$$\alpha_{ws} = \alpha_1 + 0.189184\alpha_2 - 1.377622\alpha_3. \quad (2)$$

*Figure 7* shows  $\alpha_{ws}$  for the *Baja frame*. Note that because these are snow-free values, they tend to be largest in the southern areas; especially in the near-IR for forests of western Colorado and deserts of Arizona and Sonora. With both variable surface elevation and surface albedos, this frame represents a stringent test for retrieval algorithms, as opposed to the more straightforward ocean surfaces that dominate the other two frames.

For snow/ice covered areas, snow depth and ice fraction and/or surface land type should be used to determine albedo of snow/ice covered surfaces. For ocean and lakes, wind speed is used to determine surface albedo. To determine surface emissivity for different types of surface, an additional Huang et al.'s (2016) surface emissivity climatology was used. These Surface albedo and emissivity are discussed further in another paper on broadband radiative quantities (ACM-COM and ACM-RT products) in this special issue (Cole et al. 2023).



**Figure 7:** (a) Visible white-sky albedos, as defined in (2), for snow-free land for the *Baja frame*. (b) Same as (a) except these are near-IR values. EarthCARE's nadir-track is shown by red lines.

Formatted: Space After: 18 pt

Formatted: Font: Times New Roman

Formatted: Font: Times New Roman

## 5. Aerosol properties

190 The ECSIM scene creation process requires 3D distributions of aerosol size distributions. As GEM lacks interactive aerosol tracers and chemistry, aerosol fields were added to the test scenes using information from the Copernicus Atmosphere Monitoring Service (CAMS) (Flemming et al. 2017; Inness et al. 2019). The aerosol scheme implemented within ECSIM follows the *Hybrid End-To-End Aerosol Classification* (HETEAC) approach of defining a certain set of basic aerosol types that, when weighted and summed, yield adequate representations of a wide range of observed aerosol optical properties (Wandinger et al. 2016; Wandinger et al. 2023). *Table 4* lists the CAMS aerosol fields, and the *Supplementary Material* section provides a detailed description of the mapping between CAMS fields and ECSIM scattering types. It also provides more details regarding aerosol representation.

**Table 4:** Aerosol classes from the Copernicus Atmosphere Monitoring Service (CAMS)

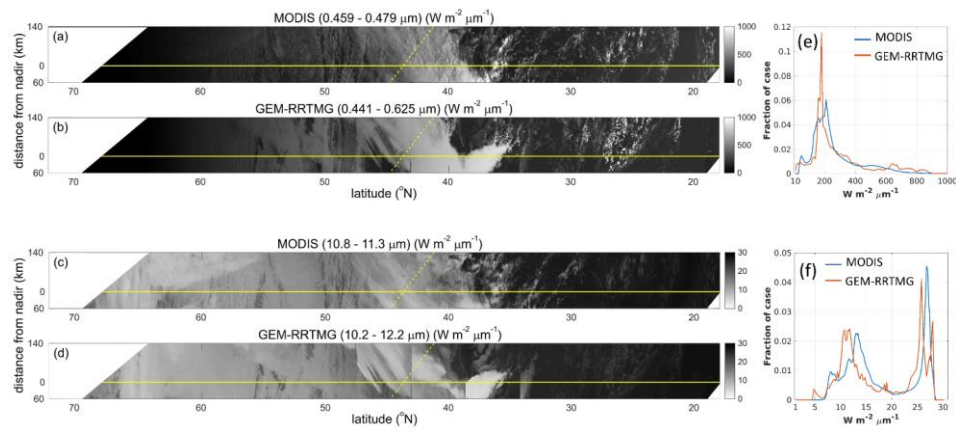
<u>aerosol class</u>	<u>description</u>
<u>DD1-DD3</u>	<u>Dust (in different size intervals)</u>
<u>SS1-SS3</u>	<u>Sea Salt (in different size intervals)</u>
<u>SO4</u>	<u>Sulphate aerosol</u>
<u>BCB</u>	<u>Fine mode strongly absorbing aerosol</u>
<u>OMB</u>	<u>Weakly absorbing aerosol</u>

## 6. Results: GEM simulations and verification

200 The purpose of this section is to show selected results that characterize the EarthCARE test frames produced directly by GEM. Post-simulation adjustments were made to ice microphysical properties as described and shown in both section 7 and *Supplementary Material*.

## 6.1. Halifax frame

Figure



**Figure 8:** (a) MODIS TOA flux (approximated by radiance\* $\pi$ ) for band 3 (459 - 479 nm) between 17h15 and 17h35 UTC on 2014-12-07. (b) RRTMG simulated upward TOA flux for 441.5 - 625 nm for GEM's simulation of the *Halifax frame*. (c) as in (a) but for band 31 (10.8-11.3  $\mu\text{m}$ ). (d) in as but for wavelengths 10.2 - 12.2  $\mu\text{m}$ . Solid and dashed yellow lines indicate EarthCARE's and CloudSat's nadir-tracks. Blank areas are outside MODIS's field-of-view. (e) frequency distributions of fluxes for band 3 (bin size of 10  $\text{W m}^{-2} \mu\text{m}^{-1}$ ). (f) as in (e) but this is for band 31 (bin size of 0.2  $\text{W m}^{-2} \mu\text{m}^{-1}$ ).

Formatted: Font: Not Bold, Not Highlight

## 6.1. Halifax frame

Figure 8a and c show MODIS spectral fluxes (MYD02HKM product; MCST 2017a) for 0.459 - 0.479  $\mu\text{m}$  and 10.8 - 11.3  $\mu\text{m}$  for the *Halifax frame*. Key cloud-related features are a cold front between 40°N and 45°N, scattered clouds to its south, and mostly overcast conditions to its north. Figure 8b and d show TOA spectral fluxes for two wavebands, close to MODIS's bands, as simulated by the Rapid Radiative Transfer Model for GCMs (RRTMG - Mlawer et al. 1997; Iacono et al. 2000; 2008) using GEM data. At large-scales, GEM did well with respect to cloud occurrence. Figure 8e and f show distributions of visible and infrared spectral fluxes, respectively. While the distributions of fluxes derived from observations and models follow similar patterns, there are some notable differences in the imagery. For the GEM scenes, discontinuities, stemming from the stitching together of the semi-independent high-resolution inner-most domains, are clearly visible across the frontal system. While annoying to look at, they do not pose a serious problem for the task at hand.

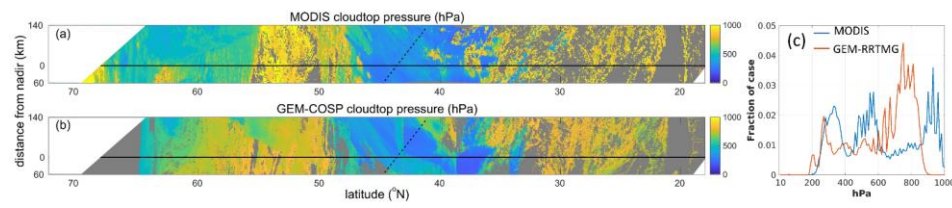
Formatted: Font: Times New Roman

Formatted: Font: Times New Roman

Near 38°N GEM's longwave fluxes are significantly less than MODIS's. This is because GEM simulated widespread convection in this area whereas MODIS only observed isolated convective cells. This is also apparent in Figure 9. This is also evident in Figure 8e and f as GEM shows higher frequencies around  $800 \text{ W m}^{-2} \mu\text{m}^{-1}$  and  $5 \text{ W m}^{-2} \mu\text{m}^{-1}$ , respectively. This is also apparent in Figure 9, which shows cloudtop altitudes both inferred from MODIS radiances (Platnick et al. 2015) and computed by the MODIS simulator of the Cloud Feedback Model Intercomparison Project (CFMIP) Observation Simulator Package (Bodas-Salcedo et al. 2011; abbreviated as the *COSP simulator*).

GEM's cloudtop altitudes are too high for low clouds between latitude 20°N and 30°N and 50°N and 55°N; most are near 750 hPa, whereas MODIS's values are mostly near 920 hPa. This can also be inferred from Figure 8f in which higher frequencies of infrared spectral fluxes from GEM are found between 23 and  $25.5 \text{ W m}^{-2} \mu\text{m}^{-1}$  for the southern section and between 10 and  $12 \text{ W m}^{-2} \mu\text{m}^{-1}$  for the northern section. Additionally, Figure 9c shows that GEM underestimates the amount of mid-level clouds between 500 and 600 hPa in the region between latitude 55°N and 62°N.

These mentioned above differences cannot be explained by the slight time difference between MODIS observation (~17h20 UTC) and GEM simulation time (17h30 UTC). On the other hand, it is common for NWP models to simulate some characteristics of cloud systems quite well yet show temporal/spatial displacements relative to observations (e.g., Qu et al. 2018). The goal when simulating these test scenes was, however, to produce large, well-resolved tracts of realistic clouds; emphasis on exactly what happened was secondary.

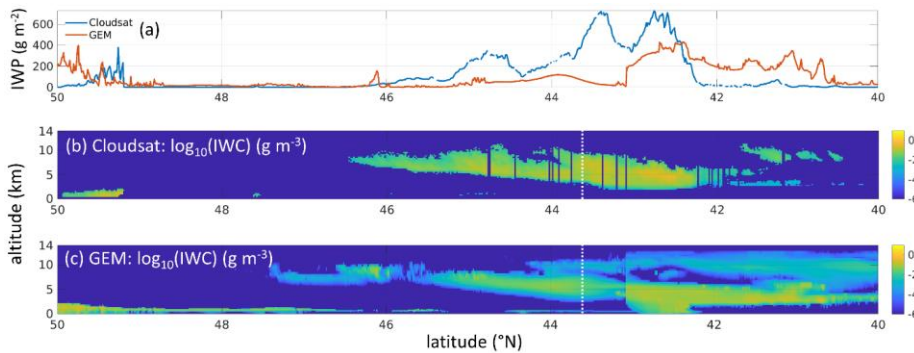


**Figure 9:** (a) MODIS cloudtop pressure (MYD06\_L2 product) between 17h15 and 17h35 UTC on 2014-12-07. Blank areas are outside MODIS's field-of-view. (b) GEM's cloudtop pressure for the Halifax frame based on COSP's MODIS simulator. Grey area in the northern portion has  $\theta_0 > 90^\circ$  and so no COSP values. (c) frequency distributions of cloudtop pressure (bin size of 10 hPa).

Figure 10b and c show cross-sections of ice CWC inferred from CloudSat radar reflectivities and simulated by GEM, respectively (for the transect indicated in Figure 8). While the cross-sections intersect only at latitude 43.6°N, the general forms of the fields agree well, and not just in the immediate vicinity of the intersection point. Unfortunately,

CloudSat's retrieval of liquid CWC is problematic (e.g., Li et al. 2018) ~~making a comparison and are not used here~~ to ~~GEM use less~~ assess GEM's. Figure 10a shows the ice water path (IWP) vertical integrals of values in Figure 10b and c. At and around the intersection point, CloudSat's IWP values are much larger than GEM's, but again, the forms of their curves are fairly similar. The edge of GEM's inner-domain near 43°N is abundantly clear.

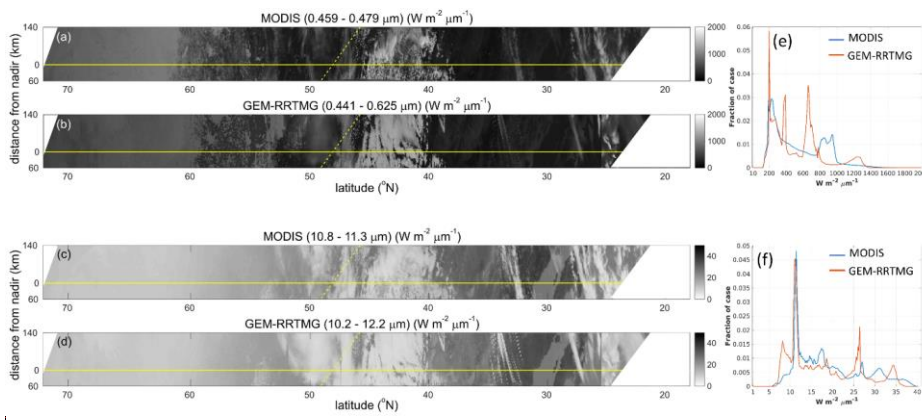
250



**Figure 10:** (a) Ice water path (IWP) inferred from CloudSat observations at 17h21 UTC on 2014-12-07 as it crossed the Halifax frame between latitudes 41°N - 44°N (dashed yellow line in Figure 8), and as simulated by GEM along the nadir-track (solid yellow lines in Figure 8). (b) and (c) are ice CWC for CloudSat and GEM, respectively. Dashed white line indicates where CloudSat's and EarthCARE's tracks intersected.

Formatted: Justified, Space After: 18 pt

255



**Figure 11:** As in Figure 8 except these are for the Baja frame. MODIS observations were between 20h10 and 20h30 UTC on 2015-04-02.

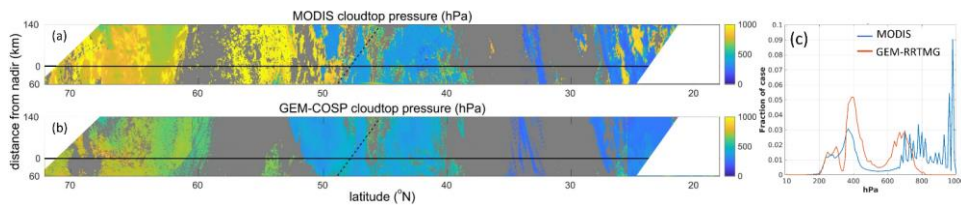
Formatted: Font: Times New Roman, Not Bold, Not Italic, English (United Kingdom)

Formatted: Font: Times New Roman

Formatted: Font: Times New Roman

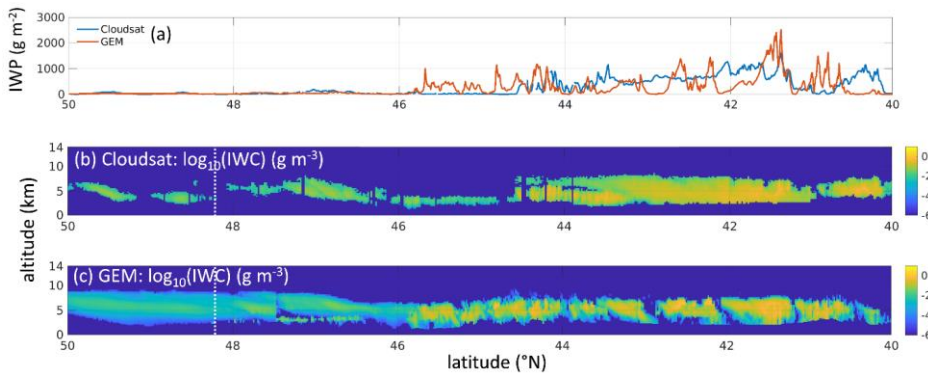
## 6.2. Baja frame

260 [Figure 11](#) compares MODIS TOA fluxes to those computed by RRTMG acting on GEM data for the *Baja frame*. As with the *Halifax frame*, agreement is generally good, though GEM's fields exhibit some peculiarities. For instance, GEM's fluxes associated with clouds are less variable than MODIS's; especially between 40°N and 50°N. This could be due to both GEM's clouds being simply too homogeneous [due to missing mesoscale forcing \(Stensrud and Gao, 2010\)](#) or RRTMG's use of 1D radiative transfer models ([see Barker et al. 2017](#)). Also, the thin high clouds near latitude 32°N, which are also evident in [Figure 12](#) and positioned well in space, show an on-off pattern that is not seen in the observations. Furthermore, near latitude 55°N GEM failed to produce the very [low-and-thin](#), but extensive, clouds-[below 800 hPa](#). This is most apparent in [Figure 12c](#). GEM's overestimation of cloudtops close to 400 hPa near latitude 50°N is consistent with [Figure 12c](#) and [Figure 11e](#) and [f](#) which show significant overestimations of fluxes between 620 and 730  $W m^{-2} \mu m^{-1}$  for visible band and between 7 and 10  $W m^{-2} \mu m^{-1}$  for infrared band. Note too, that the discontinuities that stem from stitching together GEM's innermost domains are less apparent for this frame than they are for the *Halifax frame*, though the discontinuity near 26°N is notably bad for it stands out in both visible and IR imagery.



275 **Figure 12:** As in [Figure 9](#) except these are for the *Baja frame*. MODIS cloudtop pressure are retrieved between 20h10 and 20h30 UTC on 2015-04-02.





**Figure 13:** As in *Figure 10* except these are for the *Baja frame*. CloudSat’s track indicated by the dashed yellow line in *Figure 11* is between latitudes 45°N - 49°N.

Formatted: Space After: 18 pt

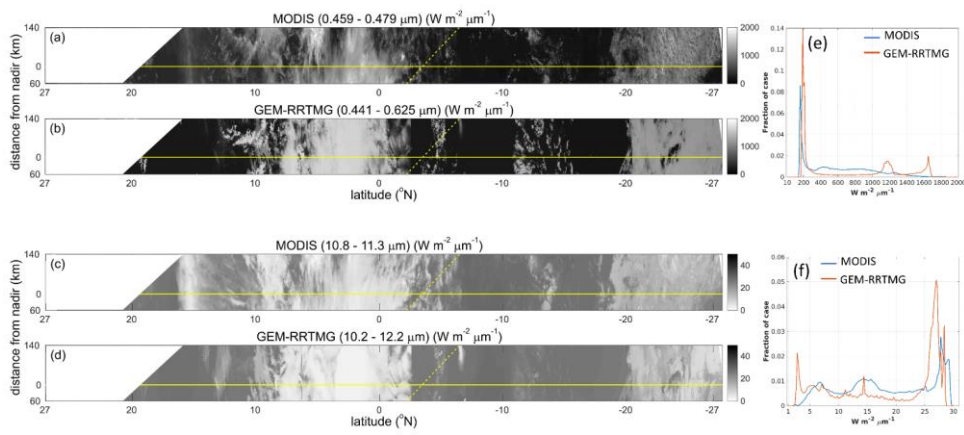
Despite these discrepancies, *Figure 13* shows that in the vicinity of where the satellite tracks intersect, vertical realizations of clouds by both GEM is quite good though the simulations and CloudSat retrievals indicate smooth mid-level, yet very low density, cloud is much too clouds, although GEM’s are more extensive. The altitudes of GEM’s clouds over the Rooky Mountains are also in fair agreement with CloudSat’s. Unlike the *Halifax frame*, the magnitudes of modelled and “observed” IWPs agree quite nicely, in general.

### 6.3. Hawaii frame

*Figure 14* shows that for the *Hawaii frame*, GEM’s positionings and approximate intensities of cloud systems near the Equator and ~25°S are very good, agree well with the MODIS observations. The harsh discontinuity in GEM’s string of innermost domains near 2°S is due to a lack of high ice cloud, as seen in *Figure 15*, which likely stems from the lack of information, in the form of reduced outflow of high cirrus, coming into the sub-domain from the equatorial mesoscale system. Likewise, near 15°N the lack of upper-level cloud in GEM could be because this sub-domain was too disconnected from the mesoscale system to the south. The lack of high cloud in the simulation can be inferred from *Figure 14e* which shows an overabundance of fluxes by GEM near  $200 \text{ W m}^{-2} \mu\text{m}^{-1}$ ; a value that resembles TOA visible fluxes from ocean surface. This is also seen in *Figure 14f* and *Figure 15c*. Again, however, the point of this section is to show the gross verisimilitude of the test frames and hence their suitability for EarthCARE algorithm assessments.

Formatted: Font: Times New Roman

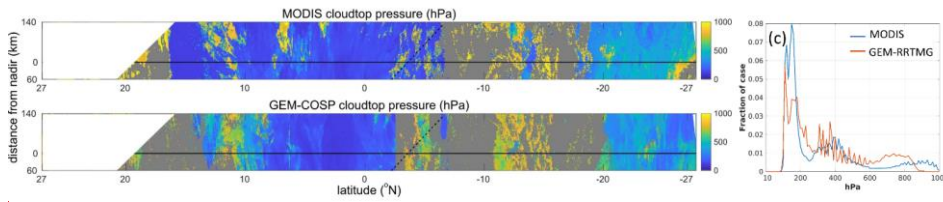
Formatted: Font: Times New Roman



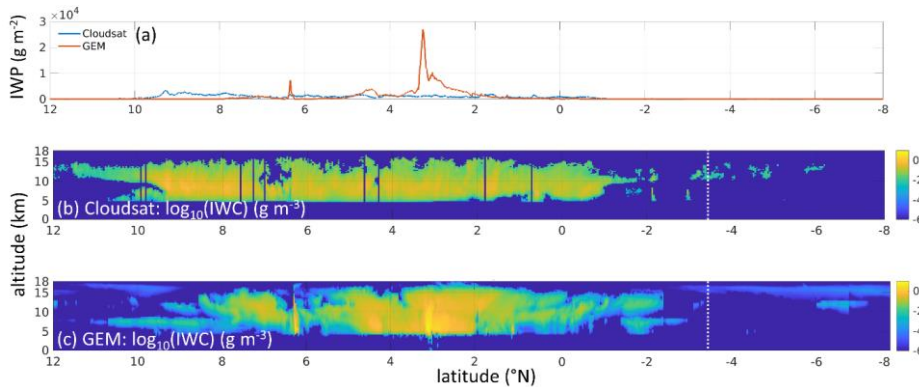
295 **Figure 14:** As in Figure 8 except these are for the Hawaii frame. MODIS observations were between 00h35 and 00h55 UTC on 2015-06-24

As Figure 16 shows, despite CloudSat's track intersecting EarthCARE's well south of the mesoscale system situated near the centre of the Hawaii frame, the system was sufficiently large in the zonal direction that CloudSat's sampling of it can be compared to EarthCARE's sampling of GEM's simulation. The regions of high ice CWC values for the two samples match extremely well both vertically and horizontally. The distribution of ice CWC inferred from CloudSat reflectivities is very narrow while GEM's is much broader with many extremely small values ( $10^{-4}$  to  $10^{-5}$  g m $^{-3}$ ) that are below the detection threshold of COSP. Aside from the huge spike in IWP for GEM near 3°N, which obviously included some precipitation, the magnitude and forms of the curves for CloudSat and GEM agree well.

305 What might appear to be a deficiency with GEM is the extreme lack of texture in the visible reflectance of cloud associated with the frontal system in the south of frame. As with the other frames, however, it is entirely likely that the smoothness GEM's field stems from application of a 1D radiative transfer model (see Barker et al. 2017). This is addressed explicitly in other papers in this special issue (Cole et al. 2023).



**Figure 15:** As in *Figure 9* except these are for the *Hawaii frame*. MODIS cloudtop pressures were retrieved from observations between 00h35 and 00h55 UTC on 2015-06-24



**Figure 16:** As in *Figure 10* except these are for the *Hawaii frame*. CloudSat's track indicated by the dashed yellow line in *Figure 14* is between latitudes 1.5°S - 6.5°S.

Formatted: Space After: 18 pt

### 7. Alterations of GEM's ice crystal sizes

315 As GEM's scenes are to be input to ECSIM (Voors et al. 2007) to simulate synthetic L1-level measurements for ATLID, CPR, MSI, and BBR (Donovan et al. 2023), it is important that not only macrophysical cloud properties be realistic, for phenomena such as solar RT and CPR nonuniform beam filling (Tanelli et al. 2002), but cloud microphysical properties, such as size distributions and mass-diameter relationships, have to be, too. While the macrophysical cloud properties simulated by GEM were deemed satisfactory by algorithm-development groups (see in the previous section), it was clear that there were shortcomings with its predicted ice cloud microphysical properties (cf. Qu et al. 2018). These deficiencies had a demonstrably negative impact on the realism of ECSIM's simulated measurements, and so adjustments to ice particle sizes were needed.

320

Formatted: Font: Times New Roman

Formatted: Font: Times New Roman

Basically, GEM predicts too many overly small ice crystals with  $R_{eff} < 10 \mu\text{m}$ . The cause of this appears to be over-estimation of ice crystal number concentrations near cloudtops. Currently, secondary ice production (SIP) mechanisms are poorly understood (Field et al., 2017; Korolev and Leisner 2020), and while at least 6 SIP mechanisms are known (Korolev et al. 2020), only the Hallett-Mossop process (Hallett and Mossop 1974, Mossop and Hallett 1974) is parametrized in the MY2 scheme. It appears as though ice number concentrations in GEM's simulations are systematically underestimated near, or just above, the melting layer. Hence, cloud glaciation times will be too long, and an excess of liquid droplets will be sent too high by updrafts. In the current scheme, droplets will eventually be converted into ice crystals via homogenous freezing, and this will produce very high concentrations of small crystals at altitude. While ongoing studies aim to improve representations of SIP (e.g., Huang et al., 2021, Qu et al. 2022a), they are not yet ready for use in GEM. As such, more manual alterations to GEM's ice crystal sizes were needed.

To improve the realism of the synthetic observations, the following adjustments were made to the GEM's original fields:

1. Implicit liquid CWCs (see ~~Table 5~~[Table A1 in the Appendix](#)) at temperatures  $< 273 \text{ K}$  were set to zero thereby reducing unrealistically large amounts of super-cooled droplets;
2. Implicit ice CWCs (see ~~Table 5~~[Table A1 in the Appendix](#)) were removed because crystal  $R_{eff}$  were artificially fixed at  $15 \mu\text{m}$ ;
3. The mass-dimension relationships used by GEM for ice and snow were replaced by those described in Erfani and Mitchell (2006) and the functional form of ice particle size  $D$  distribution was changed. Specifically, it was altered by multiplying by a factor of  $D^4$  which had the effect of increasing mean  $D$ . Following these adjustments, particle number densities were recalculated subject to conservation of GEM's original total ice and snow water contents.

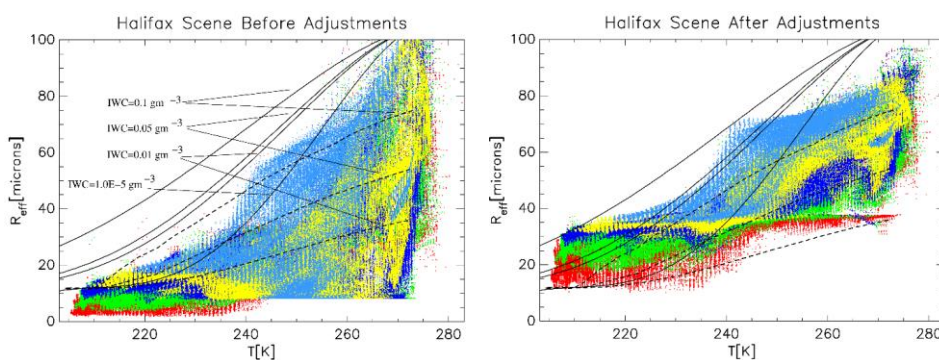
These alterations were found to produce significant, albeit from a qualitative perspective, improvements to GEM's simulated cloud properties. For example, considering the issue of too many, too small ice crystals, [Figure 17](#) shows the relationship between cloud and ice particle  $R_{eff}$  before and after the adjustments listed above. It can be seen that

Formatted: Font color: Auto

Formatted: Font: Times New Roman

Formatted: Font: Times New Roman

the population of small crystals at temperatures above 245 K has been eliminated, whilst below 240 K, minimum particle sizes after adjustments exceed 10  $\mu\text{m}$ . Moreover, the distribution of  $R_{\text{eff}}$  after adjustments is more consistent with the phase-space indicated by real observations (e.g., Donovan and van Lammeren 2001; Wyser 1998). Lines in [Figure 17](#) are from parametrizations. While many observation-based parametrizations of ice crystal size distribution exist, they exhibit only moderate agreement, and so cannot be used to fully support the credibility of adjusted  $R_{\text{eff}}$ . It can be concluded, however, with some certainty, that the above adjustments removed unrealistically small ice crystals and that the resulting temperature distribution of  $R_{\text{eff}}$  is in fair agreement with observations.



**Figure 17:** Effective radius,  $R_{\text{eff}}$ , as functions of temperature for GEM's results both before and after application of adjustments discussed in the text.  $R_{\text{eff}}$  is defined in terms of the mass and cross-sectional area of crystals following Donovan and van Lammeren (2001). Solid lines in the "before" panel correspond to the parametrization described in Wyser (1998), while dotted-lines follow Donovan and van Lammeren (2002). Colours of dots correspond to different ranges of ice water content (IWC) ( $\text{g m}^{-3}$ ): red  $\rightarrow$   $\text{IWC} < 0.0001$ , green  $\rightarrow$   $0.0001 < \text{IWC} < 0.001$ , blue  $\rightarrow$   $0.001 < \text{IWC} < 0.01$ , yellow  $\rightarrow$   $0.01 < \text{IWC} < 0.1$ , light-blue  $\rightarrow$   $0.1 < \text{IWC}$ .

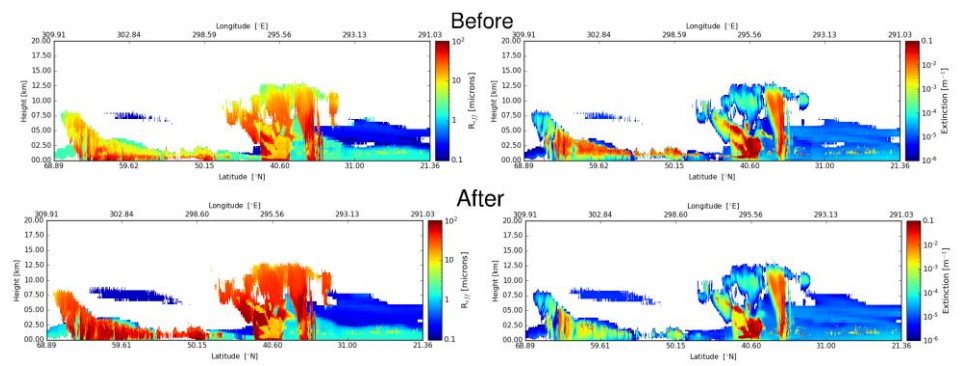
Censoring the implicit super-cooled liquid and ice water as well as the adjustment to ice and snow  $R_{\text{eff}}$  have important consequences for the vertical structure of optical extinction. This can be seen in [Figure 18](#) where nadir cross-sections of  $R_{\text{eff}}$  and extinction at 355 nm (the operating wavelength of ATLID) are shown both before and after adjustments were performed. Increases in  $R_{\text{eff}}$  and droplet extinction for clouds poleward of 50°N and at altitudes below 5 km stem from a combination of removing super-cooled implicit water and increases to ice and snow  $R_{\text{eff}}$ . The reduction

Formatted: Font color: Auto

Formatted: Font: Times New Roman

Formatted: Font: Times New Roman

of cloud extinction, especially near cloudtops between 35°N and 45°N is mainly a consequence of increasing  $R_{eff}$  of ice particles.



Formatted: Font color: Auto

370 **Figure 18:** Nadir cross-sections of  $R_{eff}$  and 355 nm extinction before and after making adjustments described in the text.

Formatted: Space After: 18 pt

Impacts of these adjustments can be seen in *Figure 19*, which shows fractions of cases as functions of effective radius and cloudtop pressure. *Figure 19a* is for MODIS retrievals (MYD06\_L2) and shows that for most cases with cloudtop pressure between 200 and 400 hPa effective radii are between 30 and 50  $\mu\text{m}$ . *Figure 19b* shows that for COSP simulations based on GEM data, most ice clouds for the same cloudtop pressures have effective radius smaller than 15  $\mu\text{m}$ . After applying the adjustments, however, COSP values improve significantly with most effective radii between 30 and 50  $\mu\text{m}$ . Though not shown, similar impacts exist for the Baja and Hawaii scenes.

375

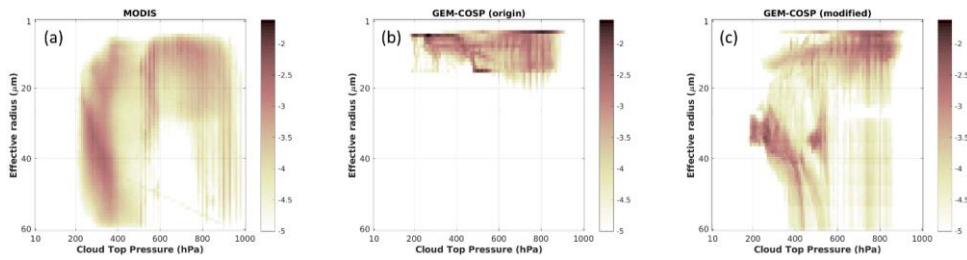
In addition to these improvements in cloud optical properties, the same adjustments were found to improve the realism of cloud properties that are relevant to simulation of CPR observations. For example, after applying the adjustments the relationship between ice CWC and simulated radar reflectivity now falls in phase-space that agrees well with real observations (e.g., Matrosov and Heymsfield 2017; Heymsfield et al. 2005). *Figure 20* shows the IWC vs. Ka-band reflectivity for the nadir Halifax scene path. It can be seen that after adjustment (*Figure 20b*) the best-fit line of GEM data compares well with the relationships shown in Fig 4 of Matrosov and Heymsfield (2017). The agreement is even more striking when distributions of data shown in Matrosov and Heymsfield (2017) are considered instead of just best-fit lines. Various cross-sections of adjusted GEM+CAMS-derived fields can be found in the *Supplementary Material*.

380

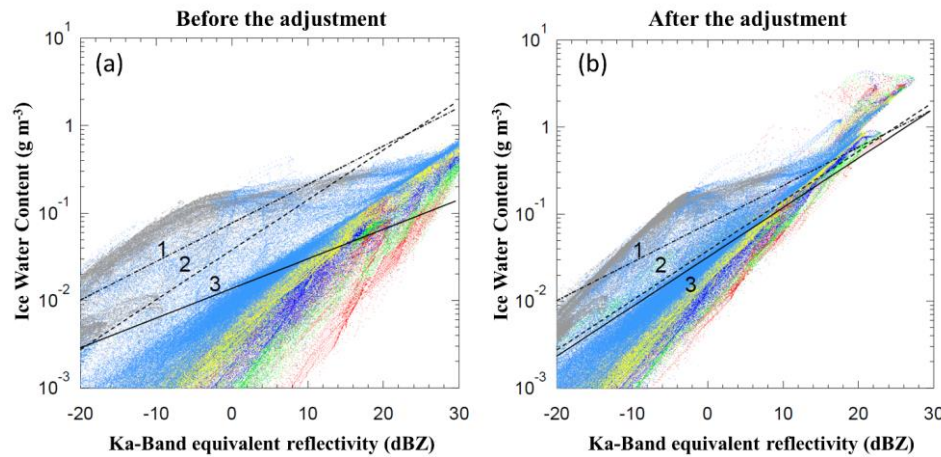
385

Formatted: Font: Times New Roman

Formatted: Font: Times New Roman



**Figure 19:** Histograms showing numbers of cases in logarithmic scale as functions of effective radius (bin width of 1 μm) and cloudtop pressure (bin width of 10 hPa). (a) MODIS retrievals from MYD06 L2 product. (b) original GEM data simulated by MODIS simulator of COSP. (c) as in (b) but this is for adjusted effective radii.



**Figure 20:** IWC vs. Ka-band equivalent reflectivity for the nadir track of the Halifax scene. Lines 1 and 2 are best-fit lines to GCPEX and CRYSTAL-FACE data, respectively, (see Matrosov and Heymsfield 2017). Line 3 is best-fit to GEM results. Red points are for temperatures  $T$  (in °C) between 0° and -5°. Green:  $-10^\circ < T < -5^\circ$ , Dark-Blue:  $-15^\circ < T < -10^\circ$ , Yellow:  $-20^\circ < T < -15^\circ$ , Light-Blue:  $-40^\circ < T < -20^\circ$ , Grey:  $T < -40^\circ$ . (a) is for before adjustment of effective radii, and (b) is for after adjustment.

## 8. Conclusions, perspectives, and data availability

In this day and age, it is difficult to see how a scientifically and technically advanced research satellite could be launched without first having completed a pre-launch *end-to-end* numerical simulation programme that assesses myriad aspects of mission performance and demonstrates the likelihood of achieving the mission's science goals. Such a programme would begin with simulation of surface-atmosphere-surface conditions that ideally span, and resemble,

Formatted: English (United Kingdom)

Formatted: Font: Times New Roman

Formatted: Font: Times New Roman



much of what can be expected to be encountered during the mission. Virtual observations, to be made by the satellite's sensors, are then simulated for the mock ~~surface-atmosphere~~~~atmosphere-surfaces~~, and they are, in turn, operated on by retrieval algorithms. This exact end-to-end simulation programme has unfolded, over the past two decades, for the EarthCARE satellite mission (ESA 2001; Illingworth et al. 2015). The purpose of this paper was to summarize the ~~surface-atmosphere-surface~~ test datasets.

Formatted: English (United Kingdom)

The synthetic ~~surface-atmosphere-surface~~ systems used for this study were produced by ECCC's Global Environment Multiscale model, which is abbreviated as "GEM" (Côté et al., 1998, Girard et al., 2014). This operational numerical weather prediction model is well-known internationally (Leroy et al., 2014, 2022; Bélair et al., 2016; Milbrandt et al., 2016; Qu et al., 2018, 2020, 2022a; McTaggart-Cowan et al. 2019). The end-to-end programme was intended initially to test retrieval algorithm performance, but was expanded to address ESA's communication and data handling segments, too. As such, large simulated domains were required. The fundamental data processing element is referred to as a *frame*. There are six frames per orbit, and so simulated "test frames" had to be ~6,200 km along-track. The across-track swath of EarthCARE's multi-spectral imager (MSI) is 150 km, and so test frames had to be at least this wide, but to avoid edge-effects, their widths were extended to 200 km. Horizontal and vertical resolutions for GEM's simulations had to allow for at least some variability within the foot-prints of EarthCARE's sensors. Use of 57 vertical layers and horizontal grid-spacing  $\Delta x$  of 0.25 km were deemed adequate (see Qu et al. 2018).

Formatted: English (United Kingdom)

Formatted: English (United Kingdom)

Three test frames, that followed orbits provided by ESA, were identified via examination of satellite data and available surface weather observations. Conditions that were captured include: a cold frontal system, broken shallow cumulus, a tropical mesoscale convective system, thin cirrus, multi-layer clouds; clear-sky conditions, with aerosols, over ocean, land (including mountains), and ice/snow surfaces. Surface bidirectional reflection distribution functions (BRDFs) and albedos from climatological data and aerosol properties were added to GEM's simulations. GEM's "computational equator" was oriented along each EarthCARE orbit and a set of nested simulations were performed that culminated in 13, separately simulated, innermost domains at  $\Delta x = 0.25$  km. These domains were concatenated to form the full 6,200 km test frames.

It was discovered that GEM's descriptions of some ice cloud properties lack the realism needed for adequate simulation of virtual observations and assessment of cloud and aerosol property retrieval algorithms. Hence, modifications were

Formatted: Font: Times New Roman

Formatted: Font: Times New Roman



made to the effective size of ice particles based on surface and *in-situ* observations. Most of the important impacts were to particle sizes near cloudtops.

~~The test frames produced for this study~~Previous studies have simulated atmospheric conditions for purposes of satellite algorithm development and evaluation (e.g., MPB Technologies Inc. 2000; Voors et al. 2008; Tao et al. 2009), constraint of cloud microphysical schemes by observations (Matsui et al. 2013, Iguchi et al. 2012a, 2012b, 2014), and assimilation of retrieved aerosol properties into Numerical Weather Prediction (NWP) models (Zeng et al. 2020; Cornut et al. 2023), but the simulations done for this study had to serve several purposes simultaneously, and this put unique demands on them. Most notably their size, for they had to provide sufficient detail to meet several wide-ranging aspects of observation simulation and algorithm assessment, with enough areal extent to evaluate data processing and archiving procedures.

As such, the overarching requirement placed on the time-sensitive production of these test frames was that they be deemed, by myriad mission researchers and managers, “sufficiently” realistic and “necessarily” expansive enough to provide adequate assessment of the numerous key steps that will be required to produce EarthCARE data. No doubt, this requirement compromised some aspects of both the quality of the simulations and their verification against independent sources of information. Moreover, efforts are being made to improve upon these test data. In particular, the two-moment bulk cloud microphysics scheme Predicted Particle Properties (P3) (Morrison and Milbrandt 2015; Milbrandt and Morrison 2016; Cholette et al. 2019; Qu et al. 2022) is being used.

That said, it is felt roundly that the objectives behind the test frames have been realized and that they have the potential to be used for other observation missions that could include platforms other than satellites; particularly those targeting cloud, aerosol, and radiation interactions. The full dataset is available publicly as summarized in the *Data availability* statement at the end. It includes atmospheric and surface properties produced by GEM data, modified hydrometeor properties, climatological surface optical properties, and the properties of added aerosols (cf. tables in the Appendix).

Formatted: English (United Kingdom)

Formatted: Font color: Auto

Formatted: Font: Times New Roman

Formatted: Font: Times New Roman

450 **Acknowledgements**

This study was made possible by a series of contracts from the European Space Agency. The authors thank Jason Milbrandt, Sylvie Leroyer, Stéphane Bélair, and Manon Faucher for technical help and discussions.

**Author contributions**

455 HWB, ZQ, JNSC, MWS and DPD conceptualized the research goals and aims. ZQ performed the GEM simulations. DPD and VH adjusted the original GEM cloud data and added the aerosols properties. ZQ, HWB and DPD drafted the manuscript with the contributions from all co-authors.

**Data availability**

460 Halifax frame’s data are available at Qu et al. 2022b,c. Baja frame’s data are available at: Qu et al. 2022d,e. Hawaii frame’s data are available at: Qu et al. 2022f,g,h.

**Financial support**

465 This study is supported by Clouds, Aerosol, Radiation - Development of INtegrated ALgorithms (CARDINAL) for the EarthCARE Mission.

**Appendix: List of test frame variables**

Please see Table 5 and 6 at the end of this manuscript.

**Table A1:** Variables for the original GEM simulations

<u>Variables name</u>	<u>Units</u>	<u>Di- men- sion</u>	<u>Notes</u>
<u>water_content_cloud</u>	<u>g m<sup>-3</sup></u>	<u>3</u>	<b>Explicit Cloud:</b> From MY2 double-moment (MY2) scheme. It’s an explicit scheme. The cloud optical properties could be calculated for each of the six species. There also could be properties from the implicit schemes such as the Planetary Boundary Layer (PBL) and shallow convection
<u>water_content_ice</u>	<u>g m<sup>-3</sup></u>	<u>3</u>	
<u>water_content_rain</u>	<u>g m<sup>-3</sup></u>	<u>3</u>	
<u>water_content_snow</u>	<u>g m<sup>-3</sup></u>	<u>3</u>	
<u>water_content_graupel</u>	<u>g m<sup>-3</sup></u>	<u>3</u>	
<u>water_content_hail</u>	<u>g m<sup>-3</sup></u>	<u>3</u>	

Formatted: Indent: First line: 0"

Formatted: Font: Times New Roman

Formatted: Font: Times New Roman

<u>number_concentration_cloud</u>	# m <sup>-3</sup>	3	<u>(SC) scheme (see below). Their optical properties could be calculated in a similar way to those for MY2 species. The final optical properties for use should be the combination of those of the concerned MY2 species and of the implicit clouds.</u>
<u>number_concentration_ice</u>	# m <sup>-3</sup>	3	
<u>number_concentration_rain</u>	# m <sup>-3</sup>	3	
<u>number_concentration_snow</u>	# m <sup>-3</sup>	3	
<u>number_concentration_graupel</u>	# m <sup>-3</sup>	3	
<u>number_concentration_hail</u>	# m <sup>-3</sup>	3	
<u>effective_radius_cloud</u>	m	3	<u>R<sub>eff</sub> calculated based on water content and number concentration from MY2 scheme.</u>
<u>effective_radius_ice</u>	m	3	
<u>effective_radius_rain</u>	m	3	
<u>effective_radius_snow</u>	m	3	
<u>effective_radius_graupel</u>	m	3	
<u>effective_radius_hail</u>	m	3	
<u>implicit_cloud_solid_water_content</u>	g m <sup>-3</sup>	3	<u>Implicit Cloud: Cloud condensates from implicit schemes (PBL+SC). R<sub>eff</sub> for solid condensate is assumed to be 15 microns.</u>
<u>implicit_cloud_liquid_water_content</u>	g m <sup>-3</sup>	3	
<u>implicit_cloud_liquid_effective_radius</u>	m	3	
<u>BRDF_iso</u>	[0 1]	2 (8 bands)	<u>Snow-free ground albedo climatology from MCD43GF, Ross-Li model (see Eq. 1 and 2). Add information of snow (X-MET, snow_depth etc.).</u>
<u>BRDF_vol</u>	[0 1]	2 (8 bands)	
<u>BRDF_geo</u>	[0 1]	2 (8 bands)	
<u>height_thermodynamic</u>	m	3	<u>Levels for all the 3D variables except those concerning the horizontal wind.</u>
<u>pressure_thermodynamic</u>	Pa	3	
<u>height_momentum</u>	m	3	<u>Levels for the variables concerning the horizontal wind (speed and direction).</u>
<u>pressure_momentum</u>	Pa	3	
<u>temperature</u>	K	3	
<u>specific_humidity</u>	g m <sup>-3</sup>	3	
<u>relative_humidity</u>	[0 1]	3	
<u>wind_horizontal_speed</u>	m s <sup>-1</sup>	3	<u>On thermodynamic levels</u>
<u>wind_horizontal_direction</u>	deg	3	<u>0: north, clockwise, on thermodynamic levels</u>
<u>wind_vertical_speed</u>	m s <sup>-1</sup>	3	
<u>cloud_mask_3d</u>	0/1	3	
<u>cloud_mask_2d</u>	0/1	2	
<u>orography</u>	m	2	
<u>solar_zenithal_angle</u>	deg	2	
<u>surface_pressure</u>	Pa	2	
<u>water_land_fraction</u>	[0 1]	2	<u>1: 100% lake/sea/ocean, 0: 100% land</u>
<u>surface_temperature</u>	K	2	<u>Sea ice not included</u>
<u>ice_fraction</u>	[0 1]	2	<u>Includes sea ice + land ice. To distinguish, use <u>water_land_fraction</u>. Use <u>ice_fraction</u> to apply ice temperature.</u>
<u>ice_temperature</u>	K	2	
<u>total_water_path</u>	g m <sup>-2</sup>	2	<u>Liquid cloud water path + ice cloud water path</u>
<u>ice_water_path</u>	g m <sup>-2</sup>	2	<u>Ice cloud water path</u>
<u>vertical_integrated_water_vapeur</u>	g m <sup>-2</sup>	2	
<u>snow_depth</u>	m	2	
<u>total_precipitation_rate</u>	m s <sup>-1</sup>	2	
<u>liquid_precipitation_rate</u>	m s <sup>-1</sup>	2	
<u>longitude</u>	deg	2	
<u>latitude</u>	deg	2	

**Table A2:** Variables archived for the test frames

<u>Variables name</u>	<u>Units</u>	<u>Dimension</u>	<u>Notes</u>
-----------------------	--------------	------------------	--------------

Formatted: Space Before: 18 pt

Formatted: Font: Times New Roman

Formatted: Font: Times New Roman

<u>BRDF_iso</u>	[0 1]	2 (8 bands)	<u>Snow-free ground albedo climatology from MCD43GF. Ross-Li model (see Eqs. 1 and 2). NB. Add information of snow (X-MET, snow_depth etc.).</u>
<u>BRDF_vol</u>	[0 1]	2 (8 bands)	
<u>BRDF_geo</u>	[0 1]	2 (8 bands)	
<u>ice_fraction</u>	[0 1]	2	<u>Includes sea ice + land ice. To distinguish, use water_land_fraction. Use ice_fraction to apply ice temperature.</u>
<u>ice_temperature</u>	K	2	
<u>total_precipitation_rate</u>	$m\ s^{-1}$	2	
<u>liquid_precipitation_rate</u>	$m\ s^{-1}$	2	
<u>orography</u>	m	2	
<u>snow_depth</u>	m	2	
<u>solar_zenithal_angle</u>	deg	2	
<u>surface_pressure</u>	Pa	2	
<u>water_land_fraction</u>	[0 1]	2	
<u>surface_temperature</u>	K	2	
<u>surface_wind_speed</u>	$m\ s^{-1}$	2	
<u>temperature</u>	K	3	
<u>specific_humidity</u>	$g\ m^{-3}$	3	
<u>pressure</u>	Pa	3	
<u>wind_horizontal_speed</u>	$m\ s^{-1}$	3	
<u>wind_vertical_speed</u>	$m\ s^{-1}$	3	
<u>mass_content</u>	$g\ m^{-3}$	3	<u>For 6 types of hydrometeors: liquid cloud, ice cloud, rain, snow, graupel and hail, and for 4 types of aerosols: coarse dust, coarse salt, fine mode weakly absorbing and fine mode strongly absorbing.</u>
<u>effective_radius</u>	micron	3	
<u>number_concentration</u>	$cm^{-3}$	3	

Formatted: Superscript

Formatted: Superscript

Formatted: Superscript

Formatted: Superscript

Formatted: Superscript

Formatted: English (United States)

Formatted: No page break before

## References

Barker, H. W., Z. Qu, Z. Bélair, S. Bélair, S., Leroyer, J.-A.S., Milbrandt, P.J. A., Vaillancourt, 2017:P. A.: Scaling Properties of Observed and Simulated Satellite Visible Radiances. *J. Geophys. Res.*, **122**, 9413– 9429, doi:10.1002/2017JD027146, 2017.

Bélair, S., Mailhot, J., Girard, C., and Vaillancourt, A. P., 2005: Boundary layer and shallow cumulus clouds in a medium-range forecast of a large-scale weather system, *Mon. Weather Rev.*, **133**, 1938–1960, 2005.

—, Bélair, S., Leroyer, S., Seino, N., Spacek, L., Souvanlasy, V., and Paquin-Ricard, D., 2017: Role and impact of the urban environment in the numerical forecast of an intense summertime precipitation event over Tokyo, *J. Meteorol. Soc. Jpn.* II, **96**, 77–94, 2017.

Bodas-Salcedo, A., Webb, M. J., Bony, S., Chepfer, H., Dufresne, J., Klein, S. A., Zhang, Y., Marchand, R., Haynes, J.M., Pincus, R. and John, V.O., 2014: COSP: satellite simulation software for model assessment. *Bull. Amer. Meteor. Soc.*, **92**, 1023–1043, 2011.

Caya, D. and Laprise, R.: A semi-implicit semi-Lagrangian Regional Climate Model: The Canadian RCM. *Mon. Wea. Rev.*, **127**, 341–362. [https://doi.org/10.1175/1520-0493\(1999\)127<0341:ASISLR>2.0.CO;2](https://doi.org/10.1175/1520-0493(1999)127<0341:ASISLR>2.0.CO;2), 1999.

Cholette, M., Morrison, H., Milbrandt, J. A., and Thériault, J. M.: Parameterization of the bulk liquid fraction on mixed-phase particles in the Predicted Particle Properties (P3) scheme: Description and idealized simulations. *Journal of the Atmospheric Sciences*, **76**(2), 561– 582. <https://doi.org/10.1175/jas-d-18-0278.1>, 2019.

Cole, J. N. S., H. W., Barker, Z.H. W., Qu, Z., Villefranche, N., Villifranque, and M. W., Shephard, 2023:M. W.: Broadband Radiative Quantities for the EarthCARE Mission: The ACM-COM and ACM-RT Products, *Atmos. Meas. Tech.*, this issue. Discuss. [preprint], <https://doi.org/10.5194/amt-2022-304>, in review, 2022.

Formatted: English (United States)

Formatted: Font: Times New Roman

Formatted: Font: Times New Roman

Cornut, F., El Amraoui, L., Cuesta, J., Blanc, J.: Added Value of Aerosol Observations of a Future AOS High Spectral Resolution Lidar with Respect to Classic Backscatter Spaceborne Lidar Measurements. *Remote Sens.* 2023, 15, 506. <https://doi.org/10.3390/rs15020506>, 2023.

495 Côté, J., Gravel, S., Méthot, A., Patoine, A., Roch, M., and Staniforth, A., 1998: The operational CMC-MRD global environmental multiscale (GEM) model. Part I: Design considerations and formulation, *Mon. Weather Rev.*, **126**, 1373–1395, 1998.

Donovan, D. P., and van Lammeren, A. C. A. P., 2001: Cloud effective particle size and water content profile retrievals using combined lidar and radar observations: 1. Theory and examples, *J. Geophys. Res.*, **106**(D21), 27425–27448, doi:10.1029/2001JD900243, 2001.

500 —, and —, 2002: Donovan, D. P. and van Lammeren, A. C. A. P.: First ice cloud effective particle size parameterization based on combined lidar and radar data, *Geophys. Res. Lett.*, **29**(1), doi:10.1029/2001GL013731, 2002.

—, Donovan, D. P., Kollias, P., Velázquez Blázquez, A., and van Zadelhoff, G.-J.: The Generation of Earth-CARE L1 Test Data sets Using Atmospheric Model Data Sets, *This issue-EGUsphere [preprint]*, <https://doi.org/10.5194/egusphere-2023-384>, 2023.

505 Girard, C., Desgagné, M., McTaggart-Cowan, R., Côté, J., Charron, M., Gravel, S., Lee, V., Patoine, A., Qaddouri, A., Roch, M., Spacek, L., Tanguay, M., Vaillancourt, P. A., and Zadra, A., 2014: Staggered vertical discretization of the Canadian environmental multiscale (GEM) model using a coordinate of the log-hydrostatic-pressure type, *Mon. Weather Rev.*, **142**, 1183–1196, 2014.

510 Erfani, E. and Mitchell, D. L., 2016: Developing and bounding ice particle mass- and area-dimension expressions for use in atmospheric models and remote sensing, *Atmos. Chem. Phys.*, **16**, 4379–4400, <https://doi.org/10.5194/acp-16-4379-2016>, 2016.

ESA, 2001: European Space Agency: *The Five Candidate Earth Explorer Missions: EarthCARE – Earth Clouds, Aerosols and Radiation Explorer*, ESA SP-1257(1), September 2001. ESA Publications Division: Noordwijk, The Netherlands, 2001.

515 Flemming, J., Benedetti, A., Inness, A., Engelen, R. J., Jones, L., Huijnen, V., Remy, S., Parrington, M., Suttie, M., Bozzo, A., Peuch, V.-H., Akritidis, D., and Katragkou, E., 2017: The CAMS interim Reanalysis of Carbon Monoxide, Ozone and Aerosol for 2003–2015, *Atmos. Chem. Phys.*, **17**, 1945–1983, <https://doi.org/10.5194/acp-17-1945-2017>, 2017.

520 Hallett, J. and Mossop, S., 1974: Production of secondary ice particles during the riming process, *Nature*, **249**, 26–28, 1974.

Heymsfield, A. J., Wang, Z., and Matrosov, S., 2005: Improved Radar Ice Water Content Retrieval Algorithms Using Coincident Microphysical and Radar Measurements, *J. Appl. Meteorol.*, **44**(9), 1391–1412, 2005.

525 Hou, A. Y., Kakar, R. K., Neeck, S., Azarbarzin, A. A., Kummerow, C. D., Kojima, M., Oki, R., Nakamura, K., and Iguchi, T.: The Global Precipitation Measurement mission. *Bull. Amer. Meteor. Soc.*, **95**, 701–722, doi:10.1175/BAMS-D-13-00164.1, 2014.

Hou, A. Y., Skofronick-Jackson, G., Kummerow, C. D. and Shepherd, J. M.: Global precipitation measurement. In: Michaelides, S. (eds) *Precipitation: Advances in Measurement, Estimation and Prediction*. Springer, Berlin, Heidelberg. [https://doi.org/10.1007/978-3-540-77655-0\\_6](https://doi.org/10.1007/978-3-540-77655-0_6), 2008.

530 Huang, X., Chen, X., Zhou, D. K., & Liu, X.: An observationally based global band-by-band surface emissivity dataset for climate and weather simulations, *J. Atmos. Sci.*, **73**(9), 3541–3555. <https://doi.org/10.1175/jas-d-15-0355.1>, 2016.

Huang, Y., Wu, W., McFarquhar, G. M., Wang, X., Morrison, H., Ryzhkov, A., Hu, Y., Wolde, M., Nguyen, C., Schwarzenboeck, A., Milbrandt, J., Korolev, A. V., and Heckman, I., 2021b: Microphysical processes producing high ice water contents (HIWCs) in tropical convective clouds during the HAIC-HIWC field campaign: evaluation of simulations using bulk microphysical schemes, *Atmos. Chem. Phys.*, **21**, 6919–6944, <https://doi.org/10.5194/acp-21-6919-2021>, 2021.

535 Iacono, M. J., Mlawer, E. J., Clough, S. A., and Morcrette, J.-J., 2000: Impact of an improved longwave radiation model, RRTM. On the energy budget and thermodynamic properties of the NCAR community climate mode, CCM3, *J. Geophys. Res.*, **105**, 14873–14890, 2000.

Formatted: English (United Kingdom)

Formatted: Font: Not Italic

Formatted: Font: Times New Roman

Formatted: Font: Times New Roman

540 —~~Jacono, M. J.~~, Delamere, J. S., Mlawer, E. J., Shephard, M. W., Clough, S. A., and Collins, W. D., ~~2008~~: Radiative forcing by long-lived greenhouse gases: Calculations with the AER radiative transfer models, *J. Geophys. Res.*, **113**, D13103, <https://doi.org/10.1029/2008JD009944>, 2008.

Illingworth, A. J., Barker, H. W., Beljaars, A., Ceccaldi, M., Chepfer, H., ~~Clerbaux, N., et al., 2015~~; ~~Delanoe, J., Domenech, C., Donovan, D., Fukuda, S., Hirakata, M., Hogan, R., Huenerbein, A., Kollias, P., Kubota, T., Nakajima, T., Nakajima, T., Nishizawa, T., Ohno, Y., and Okamoto, H.~~: The ~~EarthCARE~~EARTHCARE satellite: The next step forward in global measurements of clouds, aerosols, precipitation; and radiation. ~~Bull. B. Am. Meteor. Soc.~~, **96**, 1311–1332, <https://doi.org/10.1175/BAMS-D-12-00227.1>, 2015.

Inness, A., Ades, M., Agustí-Panareda, Iguchi T., Matsui, T., Shi, J. J., Tao, W.-K., Khain, A. P., Hou, A., Cifelli, R., Heymsfield, A. and Tokay A.: Numerical analysis using WRF-SBM for the cloud microphysical structures in the C3VP field campaign: Impacts of supercooled droplets and resultant riming on snow microphysics, *Journal of Geophysical Research*, **117**, D23206, doi:10.1029/2012JD018101, 2012a.

Iguchi, T., Matsui, T., Tokay, A., Kollias, P., and Tao W.-K.: Two distinct modes in one-day rainfall event during MC3E field campaign: Analyses of disdrometer observations and WRF-SBM simulation. *Geophysical Research Letters*, **39**, L24805, doi:10.1029/2012GL053329, 2012b.

555 Iguchi, T., Matsui, T., Tao, W., Khain, A., Phillips, V., Kidd, C., L'Ecuyer, T., Braun, S. and Hou, A.: WRF-SBM simulations of melting layer structure in mixed-phase precipitation events observed during LPVEx. *J. Appl. Meteor. Climatol.* **53**, 2710-2731, doi:10.1175/JAMC-D-13-0334.1, 2014.

~~A., Barré, J., Benedictow, A., Blechschmidt, A. M., Dominguez, J. J., Engelen, R., Eskes, H., Flemming, J., Huijnen, V., Jones, L., Kipling, Z., Massart, S., Parrington, M., Peuch, V. H., Razinger, M., Remy, S., Schulz, M., and Suttie, M., 2019~~: The CAMS reanalysis of atmospheric composition, ~~*Atmos. Chem. Phys.*, **19**, 3515–3556,~~ <https://doi.org/10.5194/acp-19-3515-2019>.

Kain, J. S. and Fritsch, J. M., ~~1990~~: A one-dimensional entraining/detraining plume model and its application in convective parameterization, *J. Atmos. Sci.*, **47**, 2784–2802, 1990.

565 —Kain, J. S. and —, ~~1993~~; Fritsch, J. M.: Convective parameterization for mesoscale models: The Kain–Fritsch scheme. The Representation of Cumulus Convection in *Numerical Models, Meteor. Monogr.*, **24**, Amer. Meteor. Soc., 165–170, 1993.

Korolev, A., Heckman, I., Wolde, M., Ackerman, A. S., Fridlind, A. M., Ladino, L. A., Lawson, R. P., Milbrandt, J., and Williams, E., ~~2020~~: A new look at the environmental conditions favorable to secondary ice production, *Atmos. Chem. Phys.*, **20**, 1391–1429, 2020.

570 —Korolev, A. and Leisner, T., ~~2020~~: Review of experimental studies of secondary ice production, *Atmos. Chem. Phys.*, **20**, 11 767–11 797, 2020.

Leroyer, S., Bélair, S., Husain, S., and Mailhot, J., ~~2014~~: Subkilometer numerical weather prediction in an urban coastal area: a case study over the Vancouver metropolitan area, *J. Appl. Meteorol. Clim.*, **53**, 1433–1453, <https://doi.org/10.1175/JAMC-D-13-0202>, 2014.

575 —, —, Leroyer, S., Bélair, S., Souvany, V. Vallée, M. Pellerin, S. and Sills, D., ~~2022~~: Summertime Assessment of an Urban-Scale Numerical Weather Prediction System for Toronto. *Atmosphere*, **13**, 1030. <https://doi.org/10.3390/atmos13071030>, 2022.

Matrosov, S. Y., and ~~A. J.~~ Heymsfield, ~~2017~~; A. J.: Empirical relations between size parameters of ice hydrometeor populations and radar reflectivity. *J. Appl. Meteorol. Clim.*, **56**, 2479–2488. doi:10.1175/JAMC-D-17-0076.1, 2017.

580 Li, J. F., S. Lee, H. Y., Ma, G. L., Stephens, and B. Guan, ~~2018~~; Matsui, T., Iguchi, T., Li, X., Han, M., Tao, W.-K., Petersen, W., L'Ecuyer, T., Meneghini, R., Olson, W., Kummerow, C. D., Hou, A. Y., Schwaller, M. R., Stocker, E. F., Kwiatkowski, J.: GPM satellite simulator over ground validation sites. *Bull. Amer. Meteor. Soc.*, **94**, 1653–1660, doi: <http://dx.doi.org/10.1175/BAMS-D-12-00160.1>, 2013.

585 Li, J. F., Lee, S., Ma, H.-Y., Stephens, G. L., and Guan, B.: Assessment of the cloud liquid water from climate models and reanalysis using satellite observations. *Terr. Atmos. Ocean. Sci.*, **29**, 653–678, doi: 10.3319/TAO.2018.07.04.01, 2018.

Formatted: Font: Not Italic

Formatted: Font: Not Italic

Formatted: Font: Not Bold

Formatted: English (United States)

Formatted: Font: Not Italic

Formatted: English (United Kingdom)

Formatted: Font: Times New Roman

Formatted: Font: Times New Roman

590 McTaggart-Cowan, R., Vaillancourt, P. A., Zadra, A., Chamberland, S., Charron, M., Corvec, S., Milbrandt, J. A.,  
 Paquin-Ricard, D., Patoine, A., Roch, M., Separovic, L., and Yang, J., 2019: Modernization of atmospheric physics  
 parameterization in Canadian NWP. *J. Adv. Model. Earth Syst.*, **11**, 3593–3635,  
<https://doi.org/10.1029/2019MS001781> <https://doi.org/10.1029/2019MS001781>, 2019.

Milbrandt, J. A. and Yau, M. K., 2005a: A multi-moment bulk microphysics parameterization. Part I: Analysis of the  
 role of the spectral shape parameter, *J. Atmos. Sci.*, **62**, 3051–3064, <https://doi.org/10.1175/JAS3534.1>, 2005a.

—, Milbrandt, J. A. and Yau, M. K., 2005b: A multi-moment bulk microphysics parameterization. Part II: A proposed  
 three-moment closure and scheme description, *J. Atmos. Sci.*, **62**, 3065–3081, <https://doi.org/10.1175/JAS3535.1>,  
 2015b.

—, Milbrandt, J. A., Bélair, S., Faucher, M., Vallée, M., Carrera, M. L., and Glazer, A., 2016: The pan-Canadian  
 high resolution (2.5km) deterministic prediction system, *Weather Forecast.*, **31**, 1791–1816,  
<https://doi.org/10.1175/WAF-D-16-0035.1>, 2016.

600 Milbrandt, J. and Morrison, H.: Parameterization of cloud microphysics based on the prediction of bulk ice particle  
 properties. Part III: Introduction of multiple free categories, *Journal of the Atmospheric Sciences*, **73**, 975–995,  
<https://doi.org/10.1175/JAS-D-15-0204.1>, 2016.

Mlawer, E. J., Taubman, S. J., Brown, P. D., Iacono, M. J., and Clough, S. A., 1997: RRTM, a validated correlated-  
 k model for the longwave, *J. Geophys. Res.*, **102**, 16663–16682, 1997.

605 MODIS Characterization Support Team (MCST), 2017a: MODIS 500m Calibrated Radiance Product. NASA MODIS  
 Adaptive Processing System, Goddard Space Flight Center, USA:  
<http://dx.doi.org/10.5067/MODIS/MYD0HKM.061>, 2017a.

MODIS Characterization Support Team (MCST), 2017b: MODIS 1km Calibrated Radiance Product. NASA  
 MODIS Adaptive Processing System, Goddard Space Flight Center, USA:  
<http://dx.doi.org/10.5067/MODIS/MYD021KM.061>, 2017b.

610 Morrison, H. and Milbrandt, J. A.: Parameterization of cloud microphysics based on the prediction of bulk ice particle  
 properties. Part I: Scheme description and idealized tests, *Journal of Atmospheric Sciences*, **72**, 287–311,  
<https://doi.org/10.1175/JAS-D-14-0065.1>, 2015.

Mossop, S. C. and Hallett, J., 1974: Ice Crystal Concentration in Cumulus Clouds: Influence of the Drop Spectrum,  
*Science*, **186**, 632–634, 1974.

615 MPB Technologies Inc.: Study on synergetic observations of Earth Radiation Mission Instruments. ESTEC Contract  
 12068/96/NL/CN, Final Report, 281 pp. Platnick, S., Ackerman, S., King, M., et al. Wind, G., Menzel, P. and Frey, R.,  
 2015. MODIS Atmosphere L2 Cloud Product (06\_L2). NASA MODIS Adaptive Processing System, Goddard Space  
 Flight Center, USA: [http://dx.doi.org/10.5067/MODIS/MYD06\\_L2.061](http://dx.doi.org/10.5067/MODIS/MYD06_L2.061), 2000.

620 Qu, Z., H. W. Barker, A. V. H. W., Korolev, J. A. V., Milbrandt, M. J. A., Wolde, A. M., Schwarzenböck, D. A., Leroy,  
 J. W. D., Strapp, J. N. S. W., Cole, J. N. S., Nguyen, L., and A. Heidinger, 2018: Evaluation of a high-resolution  
 NWP model's simulated clouds using observations from CloudSat and in situ aircraft. *Q. J. R. Meteorol. Soc.*, **144**,  
 1681–1694. doi: 10.1002/qj.3318, 2018.

—, Qu, Z., Huang, Y., Vaillancourt, P. A., Cole, J. N. S., Milbrandt, J. A., Yau, M.-K., Walker, K., and de Grandpré,  
 J., 2020a: Simulation of convective moistening of the extratropical lower stratosphere using a numerical weather  
 prediction model, *Atmos. Chem. Phys.*, **20**, 2143–2159, <https://doi.org/10.5194/acp-20-2143-2020>, 2020a.

625 —, Qu, Z., Korolev, A., Milbrandt, J. A., Heckman, I., Huang, Y., McFarquhar, G. M., Morrison, H., Wolde, M., and  
 Nguyen, C., 2022a: The impacts of secondary ice production on microphysics and dynamics in tropical convection,  
*Atmos. Chem. Phys.*, **22**, 12287–12310, <https://doi.org/10.5194/acp-22-12287-2022>.

—, Qu, Z., Donovan, D. P., Barker, H. W., Cole, J. N. S., Shephard, M. W., Huijnen, V., 2022b: Numerical Model  
 Generated Halifax Test Scenes for EarthCARE Pre-launch Studies - Part 1: Atmospheric and Surface Properties, *Zenodo*,  
<https://doi.org/10.5281/zenodo.7258361>.

630 —, —, —, and —, 2022c: Qu, Z., Donovan, D. P., Barker, H. W., Cole, J. N. S., Shephard, M. W., Huijnen,  
 V., Numerical Model Generated Halifax Test Scenes for EarthCARE Pre-launch Studies - Part 2: Hydrometeor and  
 Aerosol Properties, *Zenodo*, <https://doi.org/10.5281/zenodo.7254610>, 2022c.

Formatted: No underline

Formatted: No underline

Formatted: No underline

Formatted: No underline

Formatted: Font color: Auto

Formatted: Font color: Auto

Formatted: Font color: Auto

Formatted: Font color: Auto

Formatted: Font: Times New Roman

Formatted: Font: Times New Roman

635 ~~Qu, Z., Donovan, D. P., Barker, H. W., Cole, J. N. S., Shephard, M. W., Huijnen, V.~~; ~~Numerical Model Generated Baja Test Scenes for EarthCARE Pre-launch Studies - Part 1: Atmospheric and Surface Properties, Zenodo, <https://doi.org/10.5281/zenodo.719623>, 2022d.~~

Formatted: Font color: Auto

640 ~~Qu, Z., Donovan, D. P., Barker, H. W., Cole, J. N. S., Shephard, M. W., Huijnen, V.~~; ~~Numerical Model Generated Baja Test Scenes for EarthCARE Pre-launch Studies - Part 2: Hydrometeor and Aerosol Properties, Zenodo, <https://doi.org/10.5281/zenodo.7255530>, 2022e.~~

Formatted: Font color: Auto

~~Qu, Z., Donovan, D. P., Barker, H. W., Cole, J. N. S., Shephard, M. W., Huijnen, V.~~; ~~Numerical Model Generated Hawaii Test Scenes for EarthCARE Pre-launch Studies - Part 1: Atmospheric and Surface Properties, Zenodo, <https://doi.org/10.5281/zenodo.7196690>, 2022f.~~

Formatted: Font color: Auto

645 ~~Qu, Z., Donovan, D. P., Barker, H. W., Cole, J. N. S., Shephard, M. W., Huijnen, V.~~; ~~Numerical Model Generated Hawaii Test Scenes for EarthCARE Pre-launch Studies - Part 2: Hydrometeor and Aerosol Properties, Zenodo, <https://doi.org/10.5281/zenodo.7255758>, 2022g.~~

Formatted: Font color: Auto

Formatted: Font color: Auto

~~Qu, Z., Donovan, D. P., Barker, H. W., Cole, J. N. S., Shephard, M. W., Huijnen, V.~~; ~~Numerical Model Generated Hawaii Test Scenes for EarthCARE Pre-launch Studies - Part 3: Additional Data, Zenodo, <https://doi.org/10.5281/zenodo.7255800>, 2022h.~~

Formatted: Font color: Auto

Formatted: Font color: Auto

650 Schaaf, CB., Gao, F., Strahler, AH., Lucht, W., Li, XW., Tsang, T., Strugnell, NC., Zhang, XY., Jin, YF., Muller, JP., Lewis, P., Barnsley, M., Hobson, P., Disney, M., Roberts, G., Dunderdale, M., Doll, C., d'Entremont, RP., Hu, BX., Liang, SL., Privette, JL., Roy, D., 2002: First operational BRDF, albedo nadir reflectance products from MODIS. *Remote Sensing of Environment*, **83** (1-2), Article PII S0034-4257(02)00091-3. 10.1016/S0034-4257(02)00091-3, 2002.

655 Stensrud, D. J. and Gao, J.: Importance of horizontally inhomogeneous environmental initial conditions to ensemble storm-scale radar data assimilation and very short-range forecasts, *Monthly Weather Review*, vol. 138, no. 4, pp. 1250–1272, DOI: 10.1175/2009MWR3027.1, 2010.

660 Tanelli, S., E-Im, S.-L.-E., Durden, S. L., Facheris, L. and D-Giuli, 2002:D: The effects of nonuniform beam filling on vertical rainfall velocity measurements with a spaceborne Doppler radar. *J. Atmos. Ocean.Tech.*, **19**, 1019–1034, 2002.

Tao, W.-K., Anderson, D., Chern, J., Entin, J., Hou, A., Houser, P., Kakar, R., Lang, S., Lau, W., Peters-Lidard, C., Li, X., Matsui, T., Rienecker, M., Schoeberl, M. R., Shen, B.-W., Shi, J. J., and Zeng, X.: The Goddard multi-scale modeling system with unified physics, *Ann. Geophys.*, **27**, 3055–3064, <https://doi.org/10.5194/angeo-27-3055-2009>, 2009.

665 Voors, R., D-P-Donovan, J-D-P., Acarreta, M.J. Eisinger, R-M., Franco, D-R., Lajas, R-D., Moyano, F-R., Pironcini, J-F., Ramos, J and T- Wehr, 2007:T: ECSIM: The simulator framework for EarthCARE, *Proc. SPIE 6744, Sensors, Systems, and Next-Generation Satellites XI*, 67441Y (26 October 2007); <https://doi.org/10.1117/12.737738><https://doi.org/10.1117/12.737738>, 2007.

670 Wandinger, U., H-Baars, R-H., Engelmann, A-R., Hünerbein, S-A., Horn, T-S., Kanitz, D-T., Donovan, G-J-D., van Zadelhoff, D-G-J., Daou, J-D., Fischer, J-von Bismarck, F-J., Filipitsch, N-F., Docter, M-N., Eisinger, D-M., Lajas, D. and T-Wehr, T., 2016: "HETEAC: The Aerosol Classification Model for EarthCARE", *EPJ Web of Conferences* **119** 01004 (2016), DOI: 10.1051/epjconf/201611901004, 2016.

Wyser, K., 1998: The Effective Radius in Ice Clouds, *J. Climate*, **11**(7), 1793-1802, 1998.

Formatted: Font: Times New Roman

Formatted: Font: Times New Roman



**Table 1:** Surface conditions (observed / modelled) near the *Halifax frame* (see orbit 39316D in *Figure 1*) for 7 December 2014 at 18h00 UTC

station	Temperature (°C)	Dew Point (°C)	Pressure (hPa)	Visibility (km)	Wind Direction	Wind Speed (km/h)	Conditions
Kangerlussaq	-15.0 / -16.3	-20.0 / -18.9	1006 / 1006	-	E	18.5	Mostly cloudy
Nuuk	-4.0 / -2.6	-13.0 / -6.1	1000 / 1000	-	ESE	33.3	Low Drifting Snow + Snow
Hopedale	-17.6 / -15.6	-23.9 / -21.1	1017 / 1022	-	SW	31.0	-
Goose Bay	-16.0 / -15.5	-24.0 / -18.6	1021 / 1024	24.1	WNW	22.2	Scattered Clouds
Charlottetown	-6.0 / -4.3	-11.0 / -8.8	1029 / 1029	24.1	NW	27.8	Mostly Cloudy
Halifax	-3.0 / -2.7	-6.0 / -7.2	1026 / 1028	24.1	NNW	31.5	Overcast
Bermuda	24.0 / 22.8	18.0 / 18.5	1009 / 1010	-	N	24.1	Scattered Clouds
Punta Cana	29.0 / 26.6	22.0 / 20.7	1012 / 1014	-	NE	18.5	Scattered Clouds

**Table 2:** As in *Table 1* but these are for the *Baja frame* (see orbit 39318D in *Figure 1*) for 2 April 2015 at 21h00 UTC

station	Temperature (°C)	Dew Point (°C)	Pressure (hPa)	Visibility (km)	Wind Direction	Wind Speed (km/h)	Conditions
Gjoa Haven	-26.0 / -24.6	-29.0 / -27.9	1024 / 1025	24.1	NNW	18.5	Ice Crystals
Baker Lake	-27.0 / -25.3	-31.0 / -29.0	1018 / 1022	4.8	N	40.7	Snow Blowing + Snow
Ennadai	-28.2 / -27.2	-32.2 / -31.6	1025 / 1028	-	NNW	50	Blowing
Key Lake	-11.0 / -12.1	-22.0 / -18.3	1025 / 1026	14.5	N	13	Clear
Saskatoon	0.0 / 1.0	-10.0 / -4.6	1024 / 1022	24.1	NE	11.1	Mostly Cloudy
Billings	7.2 / 8.2	-12.8 / -13.4	1021 / 1020	16.1	NW	25.9	Scattered Clouds
Big Piney	1.7 / 1.3	-16.1 / -11.1	1017 / 1022	16.1	NW	13	Overcast
Provo	8.0 / 0.0	-6.0 / -18.6	1019 / 1024	24.1	WNW	18.5	Mostly Cloudy
Page	18.9 / 18.6	-15.6 / -7.7	1008 / 1028	16.1	W	35.2	Clear
Phoenix	28.9 / 28.2	0.6 / 1.8	1010 / 1014	16.1	WNW	22.2	Mostly Cloudy
Hermosillo	34.0 / 30.5	2.0 / 3.3	1012 / 1011	16.1	SSW	29.6	Scattered Clouds
La Paz	31.0 / 21.6	9.0 / 15.9	1013 / 1014	16.1	W	11.1	Mostly Cloudy

Formatted: Font: Times New Roman

Formatted: Font: Times New Roman

**Table 3:** Sizes of GEM's downscaling domains (see Figure 5) and their horizontal resolutions

Field Code Changed

description	domain size (km) along-track x across-track	number of vertical layers	horizontal grid-spacing (km)
downscaling domain 1	8,600 x 3,600	79	10
downscaling domain 2	2,250 x 1350	57	2.5
downscaling domain 3	1000 x 600	57	1
innermost domains 1 and 13	350 x 200	57	0.25
innermost domains 2 to 12	500 x 200	57	0.25

**Table 4:** Aerosol classes from the Copernicus Atmosphere Monitoring Service (CAMS)

aerosol class	description
DD1-DD3	Dust (in different size intervals)
SS1-SS3	Sea Salt (in different size intervals)
SO4	Sulphate aerosol
BCB	Fine mode strongly absorbing aerosol
OMB	Weakly absorbing aerosol

685

Formatted: Font: Times New Roman

Formatted: Font: Times New Roman

**Table 5:** Variables for the original GEM simulations

Variables-name	Units	Di- men- sion	Notes
water_content_cloud	$g\ m^{-2}$	2	<b>Explicit-Cloud:</b> From MY2 double-moment (MY2) scheme. It's an explicit scheme. The cloud optical properties could be calculated for each of the six species. There also could be properties from the implicit schemes such as the Planetary Boundary Layer (PBL) and shallow convection (SC) scheme (see below). Their optical properties could be calculated in a similar way to those for MY2 species. The final optical properties for use should be the combination of those of the concerned MY2 species and of the implicit clouds.
water_content_ice	$g\ m^{-2}$	2	
water_content_rain	$g\ m^{-2}$	2	
water_content_snow	$g\ m^{-2}$	2	
water_content_graupel	$g\ m^{-2}$	2	
water_content_hail	$g\ m^{-2}$	2	
number_concentration_cloud	$\#\ m^{-3}$	3	
number_concentration_ice	$\#\ m^{-3}$	3	
number_concentration_rain	$\#\ m^{-3}$	3	
number_concentration_snow	$\#\ m^{-3}$	3	
number_concentration_graupel	$\#\ m^{-3}$	3	
number_concentration_hail	$\#\ m^{-3}$	3	$R_{eff}$ =calculated based on water content and number concentration from MY2 scheme.
effective_radius_cloud	m	1	
effective_radius_ice	m	1	
effective_radius_rain	m	1	
effective_radius_snow	m	1	
effective_radius_graupel	m	1	
effective_radius_hail	m	1	Implicit-Cloud: Cloud condensates from implicit schemes (PBL+SC). $R_{eff}$ for solid condensate is assumed to be 15 microns.
implicit_cloud_solid_water_content	$g\ m^{-2}$	2	
implicit_cloud_liquid_water_content	$g\ m^{-2}$	2	
implicit_cloud_liquid_effective_radius	m	1	Snow free ground albedo climatology from MCD43GF, Ross Li model (see Eq. 1 and 2). Add information of snow (X-MET, snow_depth etc.).
BRDF_iso	{0-1}	2—(8 bands)	
BRDF_vol	{0-1}	2—(8 bands)	
BRDF_geo	{0-1}	2—(8 bands)	Levels for all the 3D variables except those concerning the horizontal wind.
height_thermodynamic	m	1	
pressure_thermodynamic	Pa	1	Levels for the variables concerning the horizontal wind (speed and direction):
height_momentum	m	1	
pressure_momentum	Pa	1	
temperature	K	1	
specific_humidity	$g\ m^{-3}$	3	On thermodynamic levels
relative_humidity	{0-1}	1	
wind_horizontal_speed	$m\ s^{-1}$	1	0: north, clockwise, on thermodynamic levels
wind_horizontal_direction	deg	1	
wind_vertical_speed	$m\ s^{-1}$	1	
cloud_mask_3d	0/1	1	
cloud_mask_2d	0/1	1	
orography	m	1	
solar_zenithal_angle	deg	1	
surface_pressure	Pa	1	
water_land_fraction	{0-1}	1	1: 100% lake/sea/ocean, 0: 100% land
surface_temperature	K	1	Sea ice not included
ice_fraction	{0-1}	1	Includes sea ice + land ice. To distinguish, use <i>water_land_fraction</i> . Use <i>ice_fraction</i> to apply ice temperature.
ice_temperature	K	1	
total_water_path	$g\ m^{-2}$	2	Liquid cloud water path + ice cloud water path
ice_water_path	$g\ m^{-2}$	2	Ice cloud water path

Formatted: Font: Times New Roman

Formatted: Font: Times New Roman

vertical_integrated_water_vapour	g·m <sup>-3</sup>	2	
snow_depth	m	2	
total_precipitation_rate	m·s <sup>-1</sup>	2	
liquid_precipitation_rate	m·s <sup>-1</sup>	2	
longitude	deg	2	
latitude	deg	2	

**Table 6:** Variables archived for the test frames

Variables name	Units	Dimension	Notes
BRDF_iso	{0-1}	2 (8 bands)	Snow-free ground albedo climatology from MCD43GF. Ross-Li model (see Eqs. 1 and 2). NB. Add information of snow (X-MET, snow_depth etc.).
BRDF_vol	{0-1}	2 (8 bands)	
BRDF_geo	{0-1}	2 (8 bands)	
ice_fraction	{0-1}	2	Includes sea-ice + land-ice. To distinguish, use <i>water_land_fraction</i> . Use <i>ice_fraction</i> to apply <i>ice_temperature</i> .
ice_temperature	K	2	
total_precipitation_rate	m·s <sup>-1</sup>	2	
liquid_precipitation_rate	m·s <sup>-1</sup>	2	
orography	m	2	
snow_depth	m	2	
solar_zenithal_angle	deg	2	
surface_pressure	Pa	2	
water_land_fraction	{0-1}	2	
surface_temperature	K	2	
surface_wind_speed	m·s <sup>-1</sup>	2	
temperature	K	2	
specific_humidity	g·m <sup>-3</sup>	2	
pressure	Pa	2	
wind_horizontal_speed	m·s <sup>-1</sup>	2	
wind_vertical_speed	m·s <sup>-1</sup>	2	
mass_content	g·m <sup>-3</sup>	2	For 6 types of hydrometeors: liquid cloud, ice cloud, rain, snow, graupel and hail, and for 4 types of aerosols: coarse dust, coarse salt, fine mode weakly absorbing and fine mode strongly absorbing.
effective_radius	μm	2	
number_concentration	cm <sup>-3</sup>	2	

Formatted: Space Before: 18 pt

Formatted: Superscript

Formatted: Superscript

Formatted: Superscript

Formatted: Superscript

Formatted: Superscript

Formatted: English (United States)

Formatted: Font: Times New Roman

Formatted: Font: Times New Roman

690

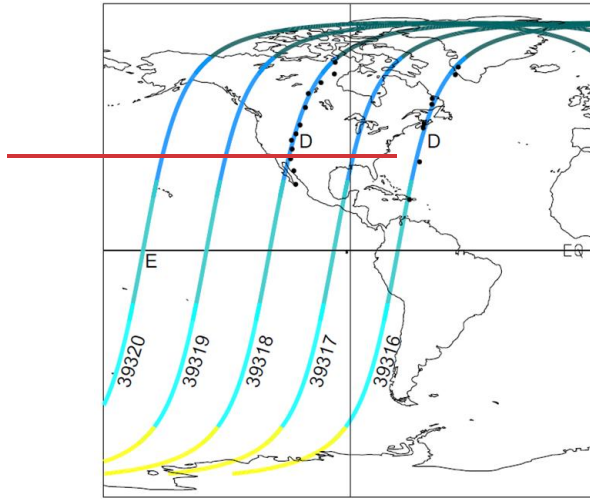


Figure 1: Examples of several successively numbered EarthCARE orbits as provided by ESA. Frames are colour-coded. The test frames are indicated by letters D and E. Frames 39316D, 39318D, and 39320E are referred to as “Halifax”, “Baja”, and “Hawaii”, respectively.

695

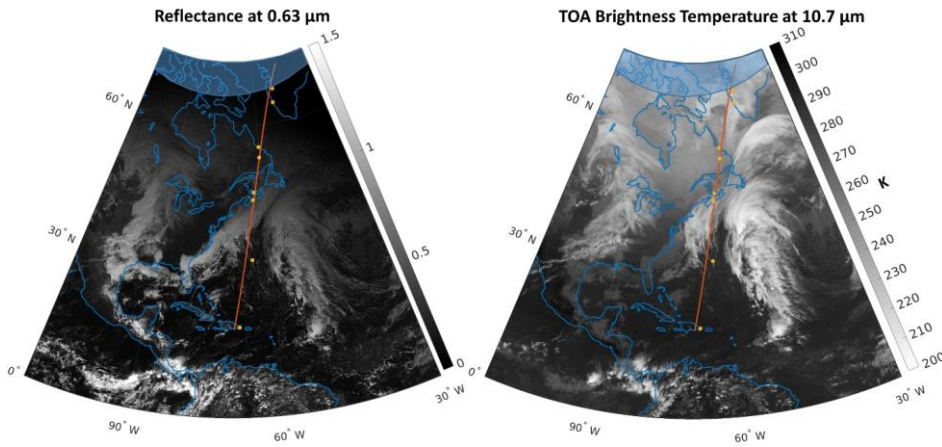
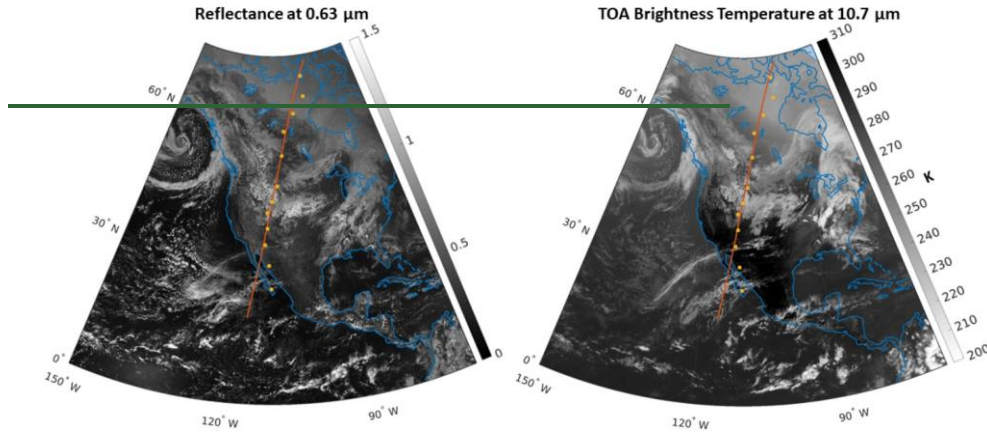


Figure 2: GOES-13 TOA reflectance at 0.63  $\mu\text{m}$  and brightness temperature at 10.7  $\mu\text{m}$  on 7 December 2014 at 18h00 UTC. Red lines indicate EarthCARE’s track for the *Halifax* frame (see orbit 39316D in Figure 1). Yellow dots mark locations of nearby surface meteorological stations. Blue shaded areas indicate GOES-13’s northern limit of observation.

- Formatted: Space After: 18 pt
- Field Code Changed
- Formatted: Font: Not Bold, Not Italic, English (United States)
- Formatted: Font: Times New Roman
- Formatted: Font: Times New Roman

700



Formatted: Space Before: 18 pt

Figure 3: As in Figure 1 but this is GOES-15 imagery for 2 April 2015 at 21h00 UTC. Red lines indicate the Baja frame (see orbit 39318D in Figure 1).

Formatted: Space After: 18 pt

Field Code Changed

Field Code Changed

Formatted: Font: 11.5 pt, Font color: Dark Blue, English (United Kingdom)

705

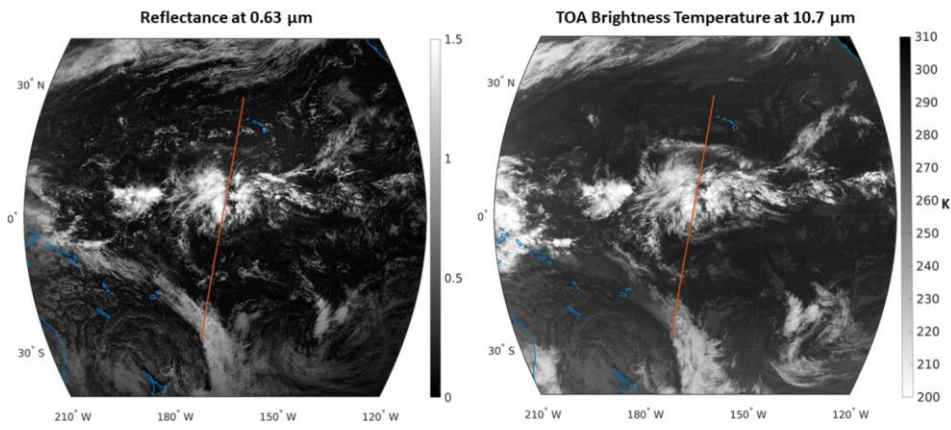


Figure 4: As in Figure 1 but this is GOES-15 imagery for 24 June 2015 at 0h00 UTC. Red lines indicate the Hawaii frame (see orbit 39320E in Figure 1).

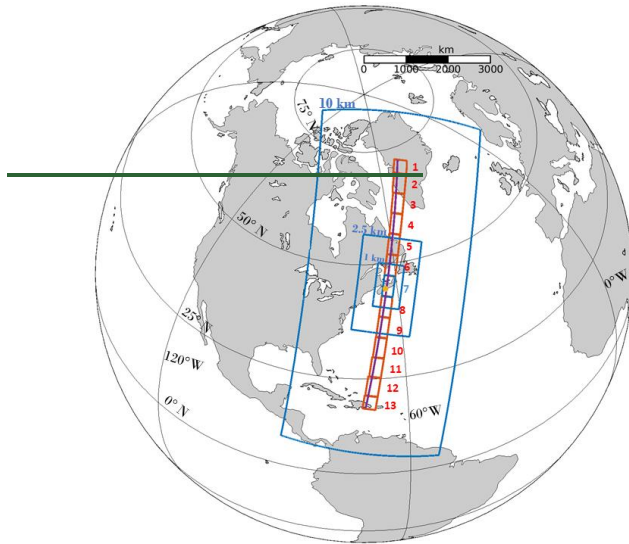
Formatted: Space After: 18 pt

Field Code Changed

Field Code Changed

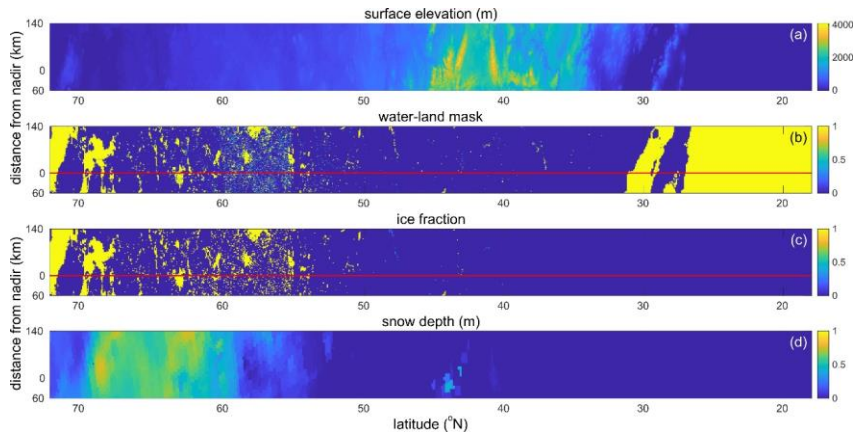
Formatted: Font: Times New Roman

Formatted: Font: Times New Roman



710 **Figure 5:** Downscaling domains for the *Halifax frame* (39316D). Blue rectangles delineate successive downscaling domains that culminate in the 7<sup>th</sup> innermost domain whose horizontal grid spacing is  $\Delta x = 0.25$  km. Red rectangles are the 12 other innermost domains for this frame. EarthCARE's ground-track is indicated by the purple line, which is 60 km west of centre.

Formatted: Space After: 18 pt



**Figure 6:** All panels are for the *Baja frame* (see *Figure 1* and *Figure 3*) and each panel's title is self explanatory. For (b) and (c), blue corresponds to land and yellow to either water or ice.

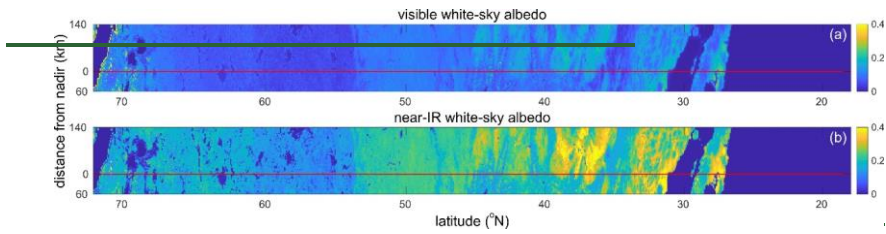
Field Code Changed

Field Code Changed

Formatted: Font: Times New Roman

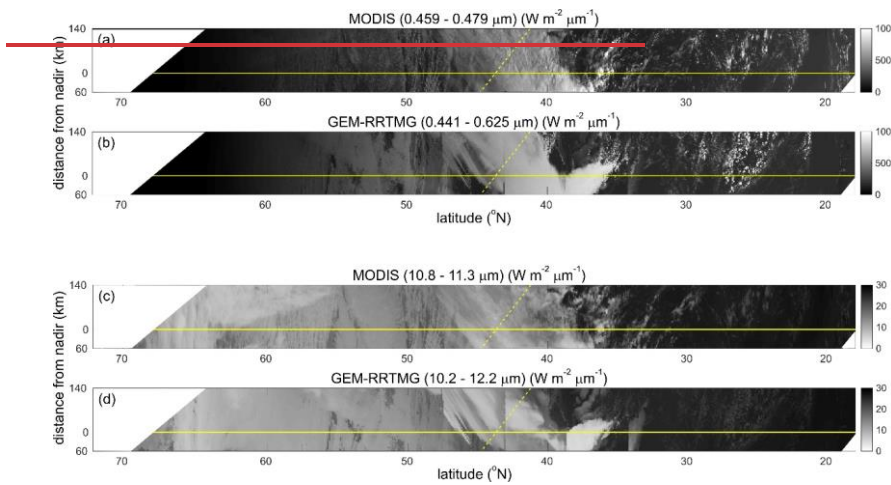
Formatted: Font: Times New Roman





720 **Figure 7:** (a) Visible white-sky albedo, as defined in (2), for snow-free land for the *Baja frame*. (b) Same as (a) except these are near-IR values. EarthCARE's nadir track is shown by red lines.

Formatted: Space After: 18 pt



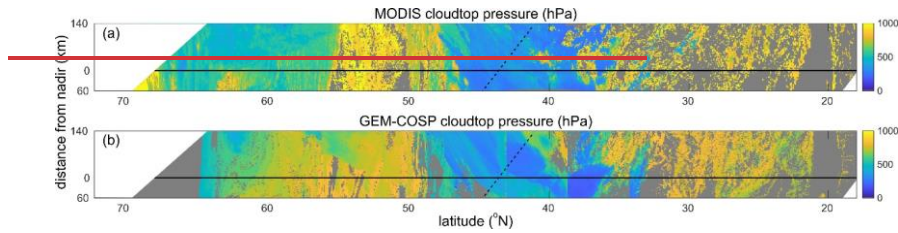
725 **Figure 8:** (a) MODIS TOA flux (approximated by radiance\* $\pi$ ) for band 3 (459–479 nm) between 17h15 and 17h30 UTC on 7 Dec 2014. (b) RRTMG simulated upward TOA flux for 441.5–625 nm for GEM's simulation of the *Hali* *far frame*. (c) as in (a) but for band 31 (10.8–11.3  $\mu\text{m}$ ). (d) in as but for wavelengths 10.2–12.2  $\mu\text{m}$ . Solid and dashed yellow lines indicate EarthCARE's and CloudSat's nadir tracks. Blank areas are outside MODIS's field of view.

Formatted: Not Highlight

Formatted: Font: Times New Roman

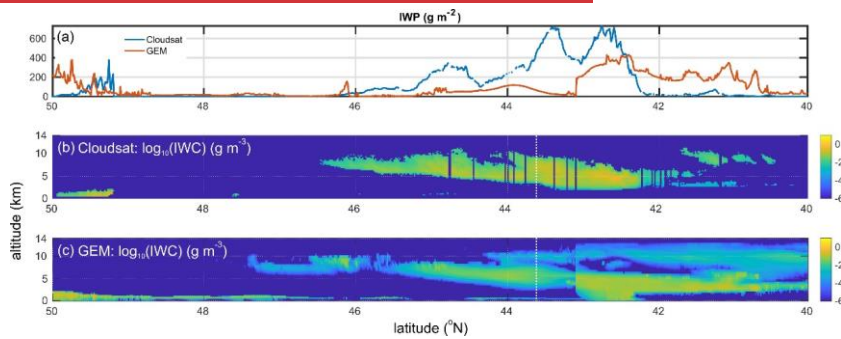
Formatted: Font: Times New Roman





**Figure 9:** (a) MODIS cloudtop pressure (MYD06\_L2 product) between 17h15 and 17h30 UTC on 7 Dec 2014. Blank areas are outside MODIS's field of view. (b) GEM's cloudtop pressure for the *Halifax frame* based on COSP's MODIS simulator. Grey area in the northern portion has  $\theta_0 > 90^\circ$  and so no COSP values.

735



**Figure 10:** (a) Ice water path (IWP) inferred from CloudSat observations at 17h21 UTC on 7 Dec 2014 as it crossed the *Halifax frame* between latitudes 41°N–44°N (dashed yellow line in *Figure 8*), and as simulated by GEM along the nadir track (solid yellow lines in *Figure 8*). (b) and (c) are ice CWC for CloudSat and GEM, respectively. Dashed white line indicates where CloudSat's and EarthCARE's tracks intersected.

740

Formatted: Justified, Space After: 18 pt

Formatted: Font: Times New Roman, Not Bold, Not Italic, English (United Kingdom)

Formatted: Font: Times New Roman

Formatted: Font: Times New Roman

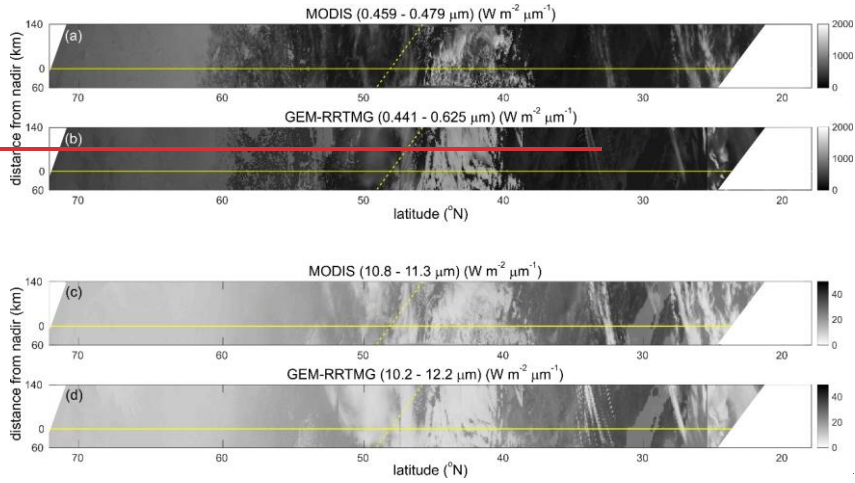


Figure 11: As in Figure 8 except these are for the Baja frame.

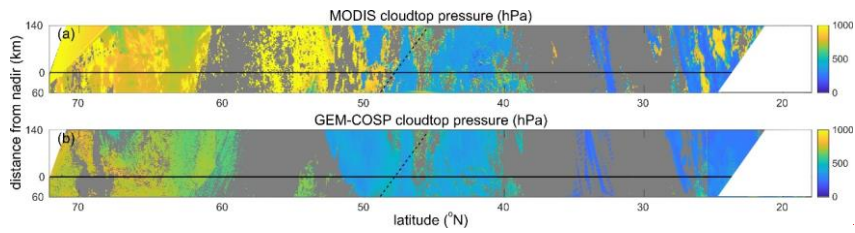


Figure 12: As in Figure 9 except these are for the Baja frame.

745

Formatted: Font: Times New Roman  
Formatted: Font: Times New Roman

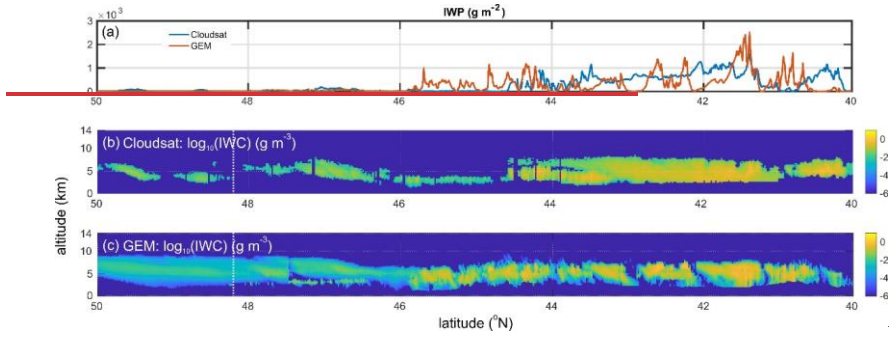


Figure 13: As in Figure 10 except these are for the Baja frame. CloudSat's track indicated by the dashed yellow line in Figure 11 is between latitudes 45°N - 49°N.

Formatted: Space After: 18 pt  
 Field Code Changed  
 Field Code Changed

750

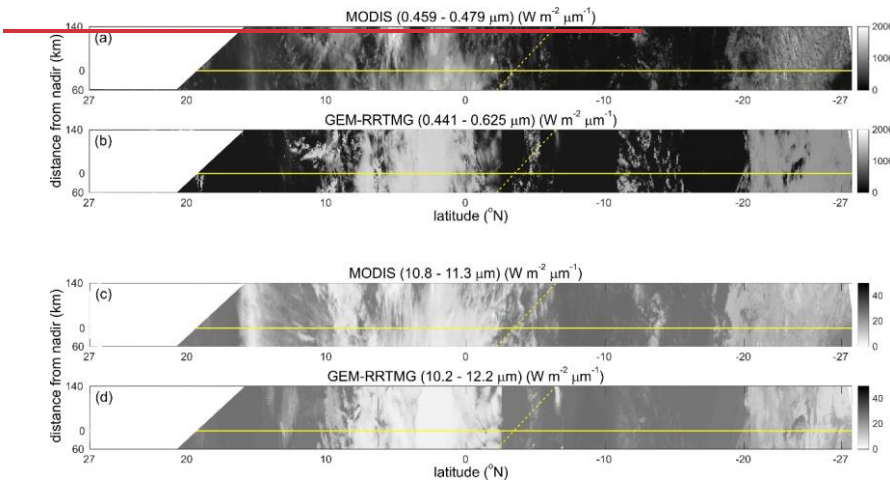


Figure 14: As in Figure 8 except these are for the Hawaii frame.

Formatted: Font: Times New Roman  
 Formatted: Font: Times New Roman

755

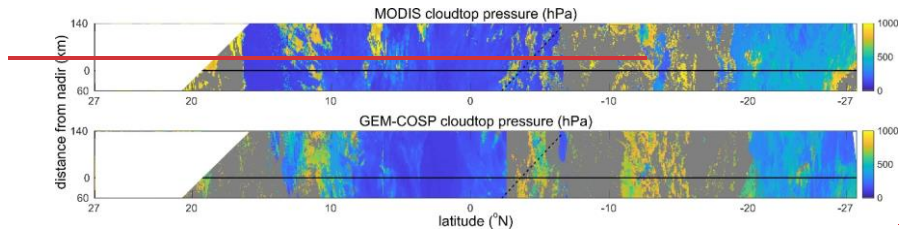


Figure 15: As in Figure 9 except these are for the Hawaii frame.

760

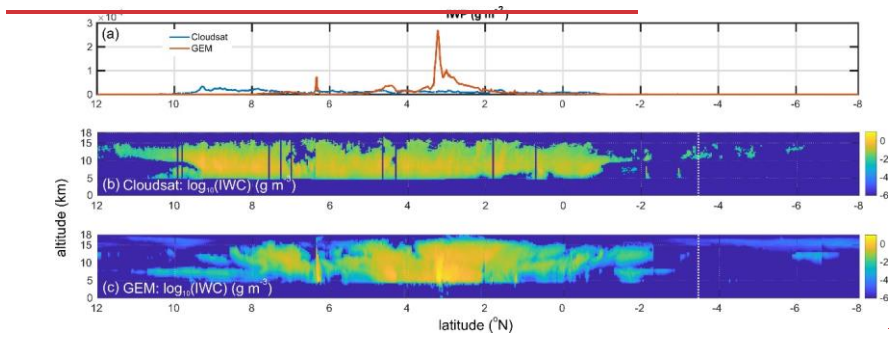


Figure 16: As in Figure 10 except these are for the Hawaii frame. CloudSat's track indicated by the dashed yellow line in Figure 14 is between latitudes 1.5°S – 6.5°S.

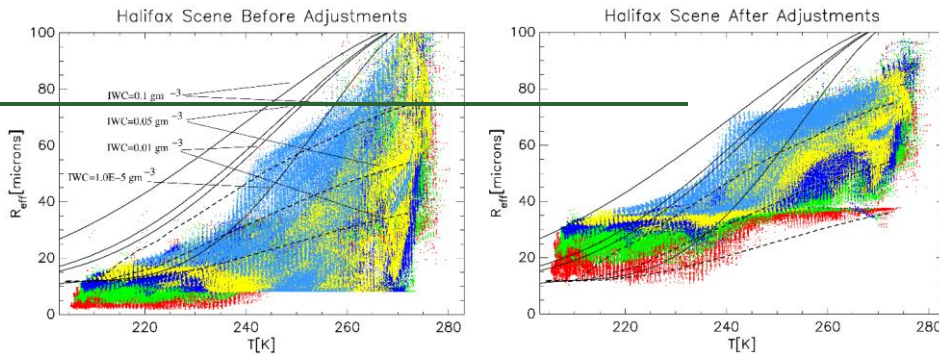
Formatted: Space After: 18 pt

Field Code Changed

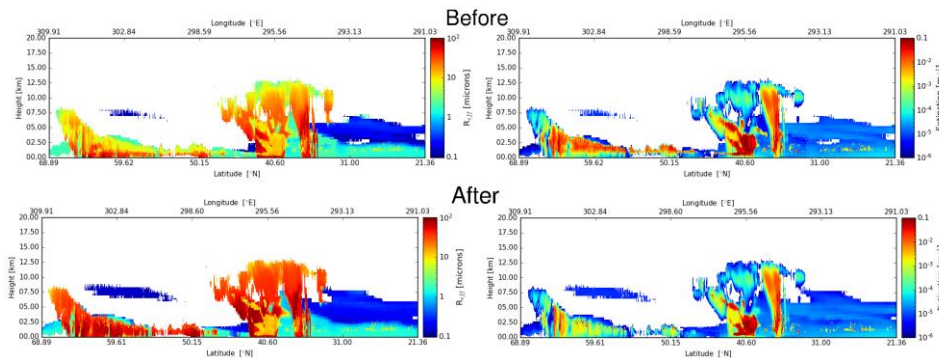
Field Code Changed

Formatted: Font: Times New Roman

Formatted: Font: Times New Roman



**Figure 17:** Effective radius  $R_{eff}$  as functions of temperature for GEM's results both before and after application of adjustments discussed in the text.  $R_{eff}$  is defined in terms of the mass and cross-sectional area of crystals following Donovan and van Lammeren (2001). Solid lines in the "before" panel correspond to the parametrization described in Wyser (1998), while dotted lines follow Donovan and van Lammeren (2002). Colours of dots correspond to different ranges of IWC ( $g\ m^{-3}$ ): red  $\rightarrow$   $IWC < 0.0001$ , green  $\rightarrow$   $0.0001 < IWC < 0.001$ , blue  $\rightarrow$   $0.001 < IWC < 0.01$ , yellow  $\rightarrow$   $0.01 < IWC < 0.1$ , light blue  $\rightarrow$   $0.1 < IWC$ .



**Figure 18:** Nadir cross sections of  $R_{eff}$  and 355 nm extinction before and after making adjustments described in the text.

Zeng, X., Atlas, R., Birk, R. J., Carr, F. H., Carrier, M. J., Cucurull, L., Hooke, W. H., Kalnay, E., Murtugudde, R., Posselt, D. J., Russell, J. L., Tyndall, D. P., Weller, R. A. and Zhang, F.: Use of observing system simulation experiments in the United States. *Bull Am Meteorol Soc.* 101(8):E1427–E1438. doi:10.1175/BAMS-D-19-0155.1, 2020.

Formatted: Font color: Auto

Formatted: Font color: Auto

Formatted: Space After: 18 pt

Formatted: Space Before: 0 pt, After: 6 pt, Line spacing: single, Don't adjust space between Latin and Asian text, Don't adjust space between Asian text and numbers

Formatted: English (Canada)

Formatted: Font: Times New Roman

Formatted: Font: Times New Roman