

Broadband Radiative Quantities for the EarthCARE Mission: The ACM-COM and ACM-RT Products

Jason N. S. Cole¹, Howard W. Barker², Zhipeng Qu¹, Najda Villefranque³, Mark W. Shephard¹

¹ Environment and Climate Change Canada, Toronto, ON, Canada

² Environment and Climate Change Canada, Victoria, ON, Canada

³ [Centre National de Recherches Météorologiques, Météo France / CNRS, Toulouse, France](#) [Laboratoire de Météorologie Dynamique, Paris, France](#)

Correspondence to: Howard W. Barker (howard.barker@canada.ca)

5 **Abstract.** The EarthCARE satellite mission’s objective is to retrieve profiles of aerosol and water cloud physical properties from measurements made by its cloud-profiling radar, backscattering lidar, and passive multi-spectral spectral imager (MSI). These retrievals, together with other geophysical properties, are input into broadband (BB) radiative transfer (RT) models that predict radiances, and fluxes, commensurate with measurements made, and inferred from, EarthCARE’s BB radiometer (BBR). The scientific goal is that modelled and “observed” BB fluxes
10 differ, on average, by less than $\pm 10 \text{ W m}^{-2}$. When sound synergistic retrievals from the ACM-CAP process are available, they are acted on by the RT models. When they are not available, the RT models act on “composite”
15 ~~atmospheric~~ profiles of ~~properties retrieved~~ properties retrieved from measurements made by individual sensors. “Compositing” is performed in the ACM-COM process as described in this report.

The majority of this report describes the RT models, and their products, that make-up EarthCARE’s ACM-RT
20 process. Profiles of BB sShortwave (SW) and longwave (LW) fluxes and heating rates (HR) ~~profiles~~ are computed by 1D RT models for each ~1 km nadir column of inferred properties. 3D RT models compute radiances for the BBR’s three viewing directions, with the SW model also computing flux and HR profiles; the 3D LW model produces upwelling flux at just one level. All 3D RT products are averages over $5 \times 21 \text{ km}$ “assessment domains” that are constructed using MSI data. ~~A subset~~ Some of ACM-RT’s products ~~are~~ are passed forward to the “radiative closure
25 assessment” process that quantifies, for each assessment domain, the likelihood that EarthCARE’s goal has been achieved. As EarthCARE represents the first mission to make “operational” use of 3D RT models, emphasis in this report is placed on differences between 1D and 3D RT results. For upwelling SW flux at 20 km altitude, 1D and 3D values can be expected to differ by more than EarthCARE’s scientific goal of $\pm 10 \text{ W m}^{-2}$ at least 50% of the time.

1. Introduction

30 The EarthCARE satellite mission’s primary objective is to make avant-garde observations of Earth’s atmosphere that can be used to help improve representations of clouds and aerosols in numerical models that predict weather, air quality, and climatic change (Illingworth et al. 2015). Detailed descriptions of observations made by EarthCARE’s cloud-profiling radar (CPR), backscattering lidar (ATLID), passive multi-spectral imager (MSI), and broadband radiometer (BBR), as well as the L2-retrieval algorithms that operate on them, are discussed in several papers of this

35 special issue (Eisinger et al., [2022,2023](#)). EarthCARE’s scientific goal is to retrieve cloud and aerosol properties with enough accuracy that when ~~used to initialize~~operated on by broadband (BB) radiative transfer (RT) models, their estimated ~~to simulated~~ top-of-atmosphere (TOA) BB fluxes, for domains covering $\sim 100 \text{ km}^2$, agree, more often than not, with their BBR-derived counterparts (Velázquez-Blázquez et al. [2022a,2023a](#)) to within $\pm 10 \text{ W m}^{-2}$ (ESA 2001). This ~~comparison~~ “radiative closure assessment”, which marks the end of the initial version of EarthCARE’s

40 formal “data production chain”, provides a continuous radiative closure assessment of L2 retrievals with invaluable information to both L2-algorithm developers and data users.

The primary purpose of this paper is to describe and demonstrate the BB RT models used for both radiative closure assessment and provision of BB flux and heating rate (HR) profiles. Application of BB RT models to L2-retrieval products, along with auxiliary data, such as profiles of state variables and surface optical properties, will provide

45 estimates of a range of diagnostic radiative flux and HR profiles. Examples of these products are presented here for simulated conditions along $\sim 6,200 \text{ km}$ -long sections of EarthCARE’s orbits, which are referred to as “frames” (Qu et al. 2023). ~~These simulations underpin most experiments reported in this special issue, referred to as a “frame” of EarthCARE data, test frames, which are documented by Qu et al. (2022) and used throughout this special issue.~~

Both 1D and 3D shortwave (SW) and longwave (LW) RT models are used. ~~The Both SW and LW~~ 3D models produce TOA radiances; the ~~3D~~-SW model also produces flux and HR profiles for all-sky conditions for a subset of $\sim 100 \text{ km}^2$ assessment domains, while the ~~3D~~-LW model produces upwelling fluxes at a single level. The number of radiative closure assessment domains, ~~referred to as assessment domains hereafter~~, that can be processed per frame changes from frame-to-frame and will depend on computer resource availability during the mission as well as, to a lesser extent, cloud structure. Both SW and LW 1D models produce flux and HR profiles for each L2-column for all-

55 sky, clear-sky (i.e., clouds removed), and pristine-sky (i.e., cloud and aerosol removed) conditions. This provides

continuity with previous and ongoing missions such as CloudSat (Stephens et al. 2002) and CERES (Wielicki et al. 1996). All applications of RT models occur in the processor referred to as ACM-RT.

The current plan is for RT models to be applied to ~~synergistic~~ retrievals from the ACM-CAP process's CAPTIVATE algorithm (Mason et al., ~~2022~~2023). ~~CAPTIVATE's ACM-CAP~~ products, which are in the L2b class of products, are recognized formally as EarthCARE's "best estimates" for they represent the most complete, synergistic, use of observations made by the CPR, ATLID, and MSI. Should ~~CAPTIVATE fail ACM-CAP products not exist~~, the contingency plan is to use a *composite* back-up "best estimate" based on products ~~that arise~~ from retrieval algorithms that operate on measurements from a single active sensor. These products are in the L2a class. As such, the secondary purpose of this paper is to describe how the composite cloud and aerosol profiles are generated ~~from single instrument retrievals~~ within the ACM-COM process.

The following section provides an overview of the ACM-COM ~~and+~~ ACM-RT processes and how they link ~~with to~~ other processes. This is followed by a description of how EarthCARE retrievals are prepared for use in RT models. ~~This includes presentation of the method used to creation of~~ L2a-composite (back-up) cloud-aerosol profiles. In section 4 the SW and LW RT models are described along with atmospheric and surface optical properties. RT model results are documented in section 5 making use of ~~EarthCARE the synthetic~~ test frames. This includes showing the full extent of products from the 1D models and differences between SW and LW fluxes predicted by ~~the~~ 1D and 3D RT models. Section 6 provides a summary.

2. Overview of EarthCARE's radiation products

~~Figure 1~~ ~~Figure 1~~ ~~Figure 1~~ encapsulates the main operations of ACM-COM and ACM-RT including its inputs and outputs. ACM-COM prepares profiles of cloud and aerosol properties, produced by L2-retrieval processors ~~as summarized by (see~~ Eisinger et al. (~~2022~~2023) ~~for a summary)~~, for use by the BB RT models in ACM-RT. Main operations of these processors are addressed in the subsequent two sections. The remainder of this section provides an overview of the components in ~~Figure 1~~ ~~Figure 1~~ ~~Figure 1~~.

Arriving at ACM-COM are profiles of cloud and aerosol properties for each ~~column, in a common retrieval grid,~~ ~~the~~ ~~the mission's~~ joint standard grid (JSG) ~~column~~ (Eisinger et al., ~~2022~~2023), along the L2-plane as retrieved by single active sensor L2a algorithms. ACM-COM also receives similar profiles produced by the synergistic L2b

85 CAPTIVATE algorithm in ACM-CAP, which utilizes ATLID, CPR, and MSI measurements (Mason et al., 2022, 2023). While studies to date suggest that ACM-CAP products will likely be EarthCARE’s default “best estimates” (Mason et al., 2022, 2023a), this will not be known for sure until EarthCARE’s post-launch “commissioning phase”. Should ACM-CAP fail, and thus and leave only (some) L2a retrievals remain usable by RT models, a contingency plan was developed in which L2a products are merged to form alternate “best estimate” composite cloud-aerosol profiles. Compositing of L2a products is explained in section 3.2.

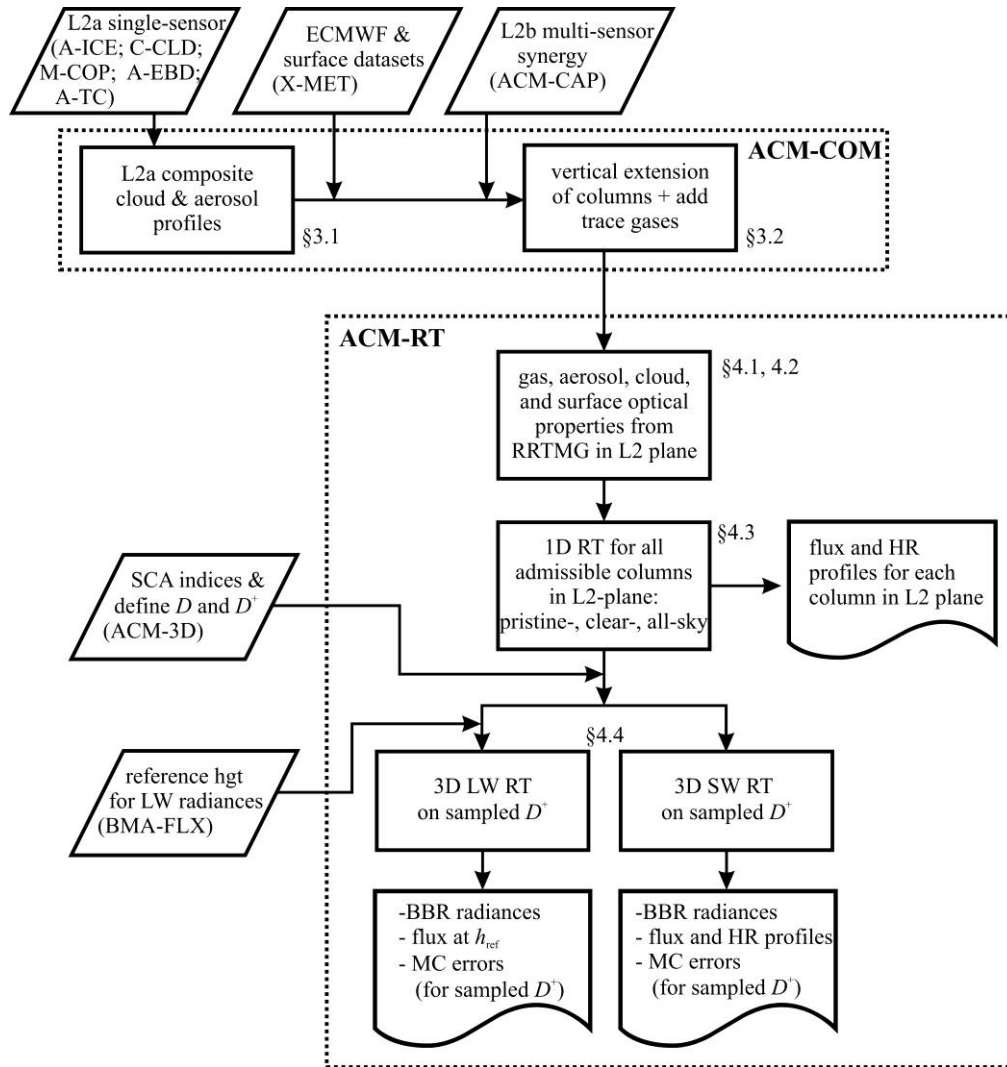
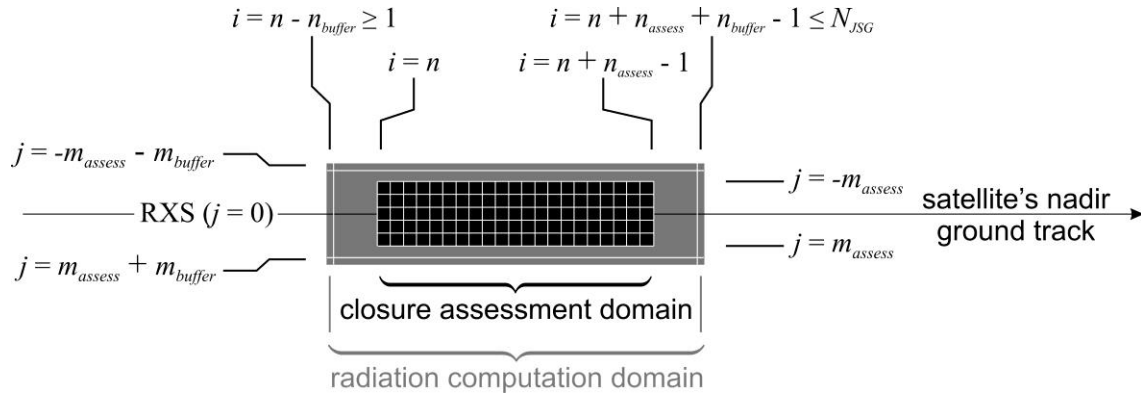


Figure 1. Flowchart summarizing the basic inputs to the ACM-COM and ACM-RT processes, their core operations, and their permanent output files. The operations are discussed in the sections that are listed next to them.

Regardless of whether ACM-CAP or alternate L2a-composite profiles ~~are to be used~~get are acted on by ACM-RT's RT models, they need to be readied for use there. Hence, the last steps of ACM-COM take profiles of meteorological variables and surface conditions, passed in ~~respectively~~ from the X-MET processor (Eisinger et al., ~~2022~~2023) and
 95 databases, respectively, and merge them with ACM-CAP or L2a-composite products.

Following previous satellite missions (e.g., L'Ecuyer et al. 2008; Kato et al., 2013), ACM-RT computes SW and LW BB flux and HR profiles by applying 1D RT models to each admissible JSG profile along the L2-plane. EarthCARE makes a substantial step forward, however, with its operational use of 3D BB RT models for both SW and LW bands. For consistency, 1D and 3D models use, where possible, common descriptions of atmospheric and surface
 100 optical properties. Optical properties for pristine atmospheres, free of aerosol and cloud, come from the Rapid Radiative Transfer Model for General Circulation Models (RRTMG) (Iacono et al. 2008; Morcrette et al. 2008). RRTMG's SW and LW 1D two-stream models compute flux and HR profiles for each JSG column along the L2-plane.- The default is to use all ACM-CAP profiles available in an EarthCARE frame.- If no ACM-CAP profiles are available, or if there is an explicit request for ~~its~~ radiative closure assessment to be performed on ACM-COM results, ~~we perform~~
 105 radiative transfer calculations are performed for the L2a-composite profiles. These results ~~get~~are passed to ACMB-DF (Barker et al. ~~2022~~2023) where they are averaged over "radiative closure assessment domains" D as dictated by ACM-3D's scene construction algorithm indices (Qu et al. ~~2022~~2023).

The 3D RT solvers are Monte Carlo solutions of the plane-parallel 3D RT equation. They use the same gaseous, aerosol, and cloud optical properties as the 1D models, but they ~~also~~ use detailed scattering phase functions. The SW
 110 model produces profiles of fluxes and HRs, and TOA BB radiances commensurate with the BBR's three telescopes. The LW model computes the same radiances, ~~but its along with an upwelling fluxes are only at a single~~ "reference height" provided as defined by in the BMA-FLX process (Velázquez-Blázquez et al., ~~2022~~2023a). All 3D RT computations are done for "radiation computation domains" D^+ that consist of D and buffer-zones around them (see Figure 2~~Figure 2~~~~Figure 2~~). Model-estimates of radiances and fluxes ~~and radiances~~, and any available uncertainties, are averaged over D^+ ~~D and~~ passed to the ACMB-DF processor (Barker et al. ~~2022~~2023) where they are ~~and~~
 115 ~~averages over D^+ are~~ compared to BBR radiances and ~~its their~~ model-derived fluxes (Velázquez-Blázquez et al., ~~2022~~2023a, Velázquez-Blázquez et al., ~~2022~~2023b).



120 **Figure 2:** Schematic showing the radiative closure assessment domain D (black) and the extended computation domain D^+ (shaded) that, which is the union of D and its buffer-zones. These domains are centred on the L2a/L2b retrieved cross-section (RXS). See Qu et al. (2022,2023) for details.

3. ACM-COM: Preparations for RT models and L2a-composites

125 As described in the following next subsection, ACM-COM reads, for use by RT models in ACM-RT, cloud and aerosol information from various L2-retrieval processes and meteorological information from X-MET for use by RT models in ACM-RT. This is followed by an explanation of how ACM-CAP's alternate L2-composite profiles are produced.

3.1. Prepping L2-retrievals for RT models

130 The ACM-COM process begins by simply extracting, from X-MET files, information about atmospheric state as needed by all BB RT models. This includes profiles of pressure, temperature, humidity, and ozone concentration. Regarding aerosols, their classification information is provided by the AC-TC processor (Irbah et al. 2022,2023) with extinction at $0.355 \mu\text{m}$ provided by obtained from A-EBD (Donovan et al. 2022,2023). Six types of aerosols are considered: dust, sea salt, continental pollution, smoke, dusty smoke, and dusty mix. These gGrid-cells in AC-TC that are classed as *cloudy*, *uncertain*, *missing*, or *noisy* are considered to be aerosol-free.

135 Additionally, ACM-COM adds the following minor molecular species to X-MET profiles: CO_2 , CH_4 , N_2O , CFC-11, CFC-12, CFC-22, and CCL4. These profiles come from climatologies generated by J.-J. Morcrette and A. Bozzo (per. comm., R. Hogan 2013). Values are functions of month, pressure, and latitude.

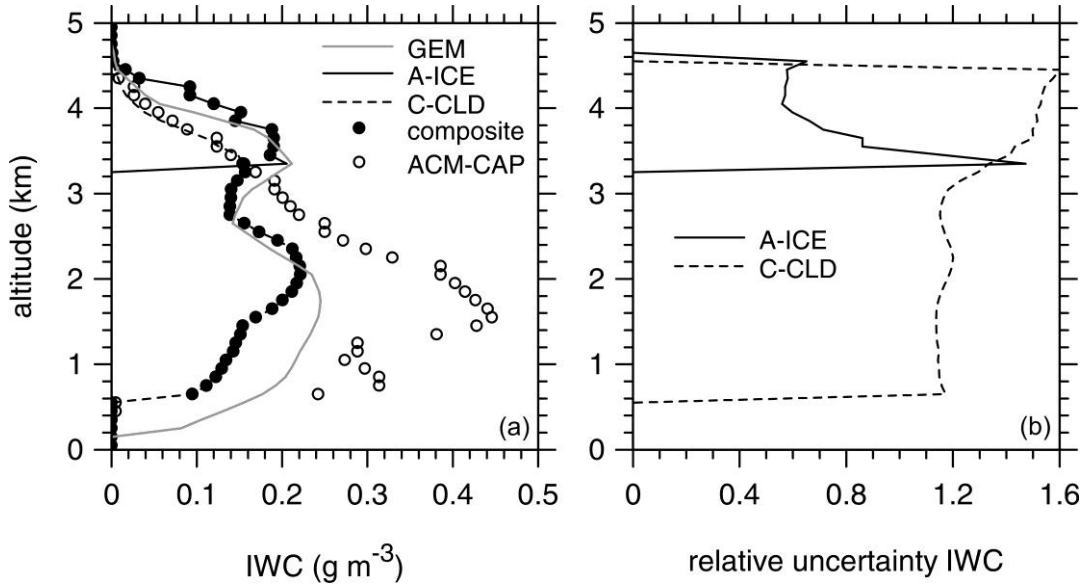
3.2. Construction of “L2a-composite” cloud and aerosol profiles

This subsection describes the algorithm that produces the alternate ~~In addition to~~ ACM-CAP’s synergistic L2b “best estimates” retrievals, ~~an alternate “best estimate” is produced, and can be used if ACM-CAP data are unavailable, It is~~ based on compositing L2a retrievals ~~that use from~~ ATLID (A-ICE) (Donovan et al. ~~2022~~2023) and CPR (C-CLD) (Mroz et al. ~~2022~~2023) observations.

The L2a-composite’s cloud properties ~~come from either A-ICE or C-CLD as subject to depend on~~ an indication of columnar cloudiness from the M-COP processor (Hünerbein et al. ~~2022~~2023). If ~~for a grid-cell in a column has either~~ A-ICE ~~or~~ C-CLD ~~reports~~ cloud water content greater than zero, the ~~reported~~ cloud properties, ~~as reported,~~ enter ~~directly~~ into the L2a-composite. ~~For grid-cells in which~~ If, however, both A-ICE and C-CLD report valid cloud properties with ice water contents $IWC > 0$, aggregated normalized uncertainties for IWC and crystal effective radius r_{eff} ~~are get~~ computed, respectively, as

$$\sigma_{A-ICE} = \sqrt{\left(\frac{\sigma_{IWC}^{A-ICE}}{IWC^{A-ICE}}\right)^2 + \left(\frac{\sigma_{r_{eff}}^{A-ICE}}{r_{eff}^{A-ICE}}\right)^2} \quad \text{and} \quad \sigma_{C-CLD} = \sqrt{\left(\frac{\sigma_{IWC}^{C-CLD}}{IWC^{C-CLD}}\right)^2 + \left(\frac{\sigma_{r_{eff}}^{C-CLD}}{r_{eff}^{C-CLD}}\right)^2}, \quad (1)$$

where σ_{IWC}^{A-ICE} , σ_{IWC}^{C-CLD} , $\sigma_{r_{eff}}^{A-ICE}$, and $\sigma_{r_{eff}}^{C-CLD}$ are processor-specific 1-sigma uncertainties. Ice cloud properties for the product having $\min(\sigma_{A-ICE}, \sigma_{C-CLD})$ enter into the L2a-composite. For grid-cells ~~designated to contain~~ only liquid cloud, C-CLD properties are used. Hence, L2a-composites resemble NASA’s CloudSat-CALIPSO-CERES (C3M) product (Kato et al. 2010), ~~though it is simpler in that active sensor-derived water contents are not constrained, as they are in ACM-CAP, -by MSI passive radiances.~~



155

Figure 3: (a) Lines represent profiles of IWC directly from the test frame (simulated by GEM), as well as those retrieved by the L2a algorithms in processors A-ICE and C-CLD. Filled circles are layer values that ACM-COM's algorithm selected from A-ICE and C-CLD according to which one has the smallest aggregated relative uncertainty, defined by $\frac{1}{1+1}$, as shown in (b). This profile, which has only ice cloud, is from the *Halifax* test frame at 63.67°N ; 54.64°W .

160

Figure 3 shows an example of this compositing process for a column from the Halifax simulated frame (Qu et al. 20222023). Only ice cloud was present, so both A-ICE and C-CLD reported hydrometeors. Above ~ 3.4 km ATLID's estimates have least uncertainty and so meaning that A-ICE values enter into the composite. At ~ 3.3 km the CPR value is least uncertain and so C-CLD's estimate is used. Below there ATLID failed to return a useable signals at lower altitudes, so with only CPR values remaining, they fill the remainder of ACM-COM's profile.

165

The fact that in this example, the "reference values", as simulated by the Global Environmental Multi-scale (GEM) model (Qu et al. 20222023), generally match ACM-COM's better than do ACM-CAP's. This, however, does not necessarily mean that ACM-COM's get are will be used by the RT models. First, d During the mission "reference values" are, of course, unknown so a plot like Figure 3 cannot be made or used. Second, if and when ACM-CAP profiles's exist, they are given get preference used by default.

170

4. ACM-RT: Broadband radiative transfer models

As mentioned above, ~~all of~~ EarthCARE's RT models are based on RRTMG (Iacono et al. 2003, 2008; Morcrette et al. 2008). Like its computationally taxing progenitor (Mlawer et al. 1997; Mlawer and Clough 1998), RRTMG is built on the correlated k -distribution (CKD) method (Goody et al. 1989; Lacis and Oinas 1991). Broadband integrated flux and HR profiles are sums of calculations for ~~252 (140 LW + 112 SW)~~ quadrature points (112 for SW and 140 for LW) spread over ~~30~~ spectral bands (14 for SW and 16 for LW + 14 SW). RRTMG is used widely in large-scale models (e.g., ECMWF, MPI, NCEP, NCAR, NASA/GSFC, LMD, CMA), and its verification has been documented elsewhere (e.g., Iacono et al. 2008; Oreopoulos et al. 2012). This section begins by describing atmospheric and surface optical properties, and follows with descriptions of the 1D and 3D transport solvers.

4.1. Optical properties: Atmospheric constituents

4.1.1. Gases

Molecular optical depths are computed by the CKD method in RRTMG_SW v3.9 and RRTMG_LW v4.85 ~~and RRTMG_SW_v3.9~~ and used by both 1D and 3D RT models. Molecular absorption coefficients for RRTMG's k -distributions were obtained from the *line-by-line* RT model (LBLRTM), which has been evaluated against surface and laboratory observations (Clough et al. 2005; Shephard et al. 2009; Alvarado et al. 2012). LBLRTM's spectroscopic line parameters are essentially equivalent to HITRAN 2000 and HITRAN 1996 (SW) databases. Algorithmic accuracy of LBLRTM is 0.5% (Clough et al 2005) with limiting errors generally attributed to line shape and spectroscopic input parameters.

Wavenumber ranges for RRTMG's SW bands are: 2600-3250, 3250-4000, 4000-4650, 4650-5150, 5150-6150, 6150-7700, 7700-8050, 8050-12850, 12850-16000, 16000-22650, 22650-29000, 29000-38000, 38000-50000, and 820-2600 cm⁻¹, with the last band coded out of sequence for spectral continuity with the LW bands. Sources of extinction are: absorption by H₂O, CO₂, O₃, CH₄, O₂, N₂; and Rayleigh scattering.

Wavenumber ranges for RRTMG's LW bands are: 10-350, 350-500, 500-630, 630-700, 700-820, 820-980, 980-1080, 1080-1180, 1180-1390, 1390-1480, 1480-1800, 1800-2080, 2080-2250, 2250-2380, 2380-2600, and 2600-3250 cm⁻¹. Molecular absorption optical depths are computed for: H₂O, CO₂, O₃, N₂O, CH₄, O₂, N₂, CFC11, CFC12,

CFC22, and CCl₄. Additionally, CKD_v2.4's continuum model accounts for foreign- and self-broadening of lines for H₂O, CO₂, O₂, O₃, and Rayleigh scattering.

200 ~~Wavenumbers for RRTMG's SW bands are: 2600-3250, 3250-4000, 4000-4650, 4650-5150, 5150-6150, 6150-7700, 7700-8050, 8050-12850, 12850-16000, 16000-22650, 22650-29000, 29000-38000, 38000-50000, and 820-2600 cm⁻¹, with the last band coded out of sequence for spectral continuity with the LW bands. Sources of extinction are: absorption by H₂O, CO₂, O₃, CH₄, O₂, N₂; and Rayleigh scattering.~~

For 1D SW RT, the Rayleigh scattering phase function is approximated as $p_{Ray}(\mu) = 1$, where $\mu = \cos \theta$ and θ is scattering angle. For 3D SW RT, on the other hand,

205

$$p_{Ray}(\mu) = \frac{3}{4}(1 + \mu^2), \quad (2)$$

which is, as are all phase functions used here, normalized as

$$\frac{1}{2} \int_{-1}^1 p_{Ray}(\mu) d\mu = 1. \quad (3)$$

Relative to LBLRTM, clear-sky RRTMG_LW BB fluxes at all levels are accurate to within $\pm 1.5 \text{ W m}^{-2}$ ($\pm 1 \text{ W m}^{-2}$ for direct-beam and $\pm 2 \text{ W m}^{-2}$ for diffuse-beam), with HRs agreeing to within $\pm 0.2 \text{ K day}^{-1}$ in the troposphere and $\pm 0.4 \text{ K day}^{-1}$ in the stratosphere. Likewise, RRTMG_SW's accuracies, at $\mu_0 \approx 0.7$, are within $\pm 3 \text{ W m}^{-2}$ at all levels, with HRs agreeing to within $\pm 0.1 \text{ K day}^{-1}$ in the troposphere, and $\pm 0.35 \text{ K day}^{-1}$ in the stratosphere.

210

4.1.2. Aerosols

As with gases, 1D and 3D RT models ~~use-share~~ the same spectral optical properties for aerosols: extinction coefficient β_{aero} , single-scattering albedo ω_{aero} , and asymmetry parameter g_{aero} . Spectral β_{aero} , ω_{aero} , and g_{aero} ~~for the RT models~~ are averaged ~~s~~ over wavelength λ intervals listed above. ~~To, and were generated these in a mannerso as to be~~ consistent with ~~the-retrieval algorithms, optics are computed~~ following (Wandinger et al. (20222023)). ~~The same Radiative properties for their basic aerosol types are used, which are then externally-mixed externally to generatey-~~

215

ielding radiative properties for ~~the aerosol mixtures used~~ classifications used in AC-TC. ~~Since profiles of a~~ aerosol extinction ~~are~~ is provided at 355 nm, ~~the~~ and so for each aerosol mixture the ratio of $\beta_{\text{aero}}(\lambda) / \beta_{\text{aero}}(0.355 \mu\text{m})$ at each λ wavelength to β_{aero} at 355 nm is computed and then used instead ~~so the profiles of β_{aero} computed from lidar data.~~ Wavelength-resolved properties are then averaged to each SW and LW spectral ~~interval using~~ ly using the same weightings s as for cloud radiative properties as described below.

Aerosol scattering phase functions ~~In addition to these integrated optical properties, as needed by~~ the 3D RT codes ~~require scattering phase functions,~~ which for aerosols are represented by the Henyey-Greenstein (1941) function, which is given by ~~as~~

$$p_{HG}(\mu; g_{\text{aero}}) = \frac{1 - g_{\text{aero}}^2}{(1 + g_{\text{aero}}^2 - 2g_{\text{aero}}\mu)^{3/2}}, \quad (4)$$

~~which~~ satisfies

$$g_{\text{aero}} = \frac{1}{2} \int_{-1}^1 p_{HG}(\mu; g_{\text{aero}}) \mu d\mu, \quad (5)$$

and is used directly in the models (i.e., no need for tabulation). Owing to the size and irregularity of aerosol particles, and retrieval uncertainties, use of ~~(4)(4)(4)~~ is reasonable.

4.1.3. Liquid clouds

The standard version of RRTMG uses Hu and Stamnes's (1993) parametrizations ~~for~~ of spectral β , ω_0 , and g ~~of~~ for liquid droplets. For EarthCARE's ~~1D and 3D RT models~~, however, these have been replaced by more precise Lorenz-Mie calculations tabulated for ranges of droplet effective radii r_{eff} and effective variances v_{eff} , which are defined, respectively, as

$$r_{\text{eff}} = \frac{\int_0^\infty n(r) r^3 dr}{\int_0^\infty n(r) r^2 dr} = \frac{\langle r^3 \rangle}{\langle r^2 \rangle}, \quad (6)$$

and

$$v_{eff} = \frac{\int_0^\infty (r - r_{eff})^2 n(r) r^2 dr}{r_{eff}^2 \int_0^\infty n(r) r^2 dr} = \frac{\langle r^2 \rangle \langle r^4 \rangle}{\langle r^3 \rangle^2} - 1, \quad (7)$$

240 where r is droplet radius. Droplet size distributions $n(r)$ ~~was are~~ assumed (Chýlek et al. 1992) to be

$$n(r) = \frac{N}{\Gamma(\nu)} \left(\frac{\nu}{\langle r \rangle} \right)^\nu r^{\nu-1} \exp\left(-\frac{r\nu}{\langle r \rangle} \right). \quad (8)$$

where $\langle r \rangle = \nu r_{eff} v_{eff}$ and $\nu = (1 - 2v_{eff}) / v_{eff}$ (Cheylek et al., 1992).

Lorenz-Mie computations (Wiscombe 1980), using Segelstein's (1981) refractive indices, were performed for r between 0.01 and 120 μm in increments of 0.05 μm , and for wavelengths λ between 0.25 and 100 μm in increments
 245 of: 0.02 for $0.25 < \lambda < 2 \mu\text{m}$; 0.04 for $2 < \lambda < 3 \mu\text{m}$; 0.05 for $3 < \lambda < 10 \mu\text{m}$; 0.07 for $10 < \lambda < 20 \mu\text{m}$; and 0.1 for $20 < \lambda < 100 \mu\text{m}$. Phase functions and optical properties were integrated over RRTMG's spectral intervals for combinations of r_{eff} and v_{eff} : r_{eff} from 0.5 - 40 μm in increments of 0.5 μm ; and v_{eff} from 0.02 - 0.4 in increments of 0.02
 250 μm . Spectral weightings for SW bands ~~were are the mean of the~~ downwelling irradiances ~~averaged~~ at the tropopause and ~~at the surface as predicted by from a~~ LBL-line-by-line data-RT model (Iacono et al. 2008) for the tropical atmosphere at solar zenith angle $\theta_0 = 0^\circ$. For LW bands, weightings ~~were are~~ the Planck function at 275 K. In the RT models, values of r_{eff} and v_{eff} ~~get are~~ rounded to the nearest value in the table, which usually results in errors for β , ω_0 , and g of less than $\pm 1\%$.

As the 3D RT models are Monte Carlo solutions, they use normalized tabulated scattering phase functions $p(\mu)$ for droplets. Broadband, spectrally-integrated $p(\mu)$ have 1,800 equal angular bins, and their cumulative sums, as
 255 functions of μ , were computed by

$$R(\mu_s) = \frac{1}{2} \int_{\mu_s}^1 p(\mu) d\mu, \quad (9)$$

where μ_s is cosine of scattering angle, with $R(\mu_s = 1) = 0$ (forescatter) and $R(\mu_s = -1) = 1$ (backscatter). For efficiency, tables of μ_s were constructed for 1800 equally spaced values of R ; when a scattering event occurs, a uniform pseudo-random number gets generated $R \in [0, 1]$, and linear interpolation sets μ_s , which is used to update a photon's direction cosines.

4.1.4. Ice clouds

Values of β , ω_0 , g , and scattering phase functions for ice clouds ~~as used in the 1D and 3D RT models~~ are based on Yang et al.'s (2013) theoretical functions for 11 crystal habits: droxtals, prolate spheroids, oblate spheroids, solid columns, hollow columns, aggregates composed of 8 solid columns, hexagonal plates, small aggregates composed of 5 plates, large aggregates composed of 10 plates, solid bullet rosettes, and hollow bullet rosettes. Maximum dimension for each habit ranges from 2 μm to 10,000 μm for 189 discrete sizes. Three surface roughness conditions were considered for each ice habit: smooth, moderate, and severe. Each constituent has volume, projected area, effective size, extinction efficiency, ω_0 , and g . Their scattering phase functions are tabulated at 498 unequal angles, but were transformed into 1,800 equal angular bins for use in ~~(9)(9)(9)~~.

To make this dataset's size suitable for operational use, optical properties were averaged over λ and assumed distributions of habit, size, and roughness that were derived from CALIPSO observations (Baum et al. 2011). Resulting phase functions and optical properties are functions of effective diameter which is defined as

$$d_{\text{eff}} = \frac{3 \sum_i \int V_i(D) n(D) f_i(D) dD}{2 \sum_i \int A_i(D) n(D) f_i(D) dD}, \quad (10)$$

where V , A , and D are geometric volume, orientation-averaged projected area, and maximum dimension of ice particle, respectively. $n(D)$ denotes crystal size distribution, and f_i indicates the percentage of each ice particle habit

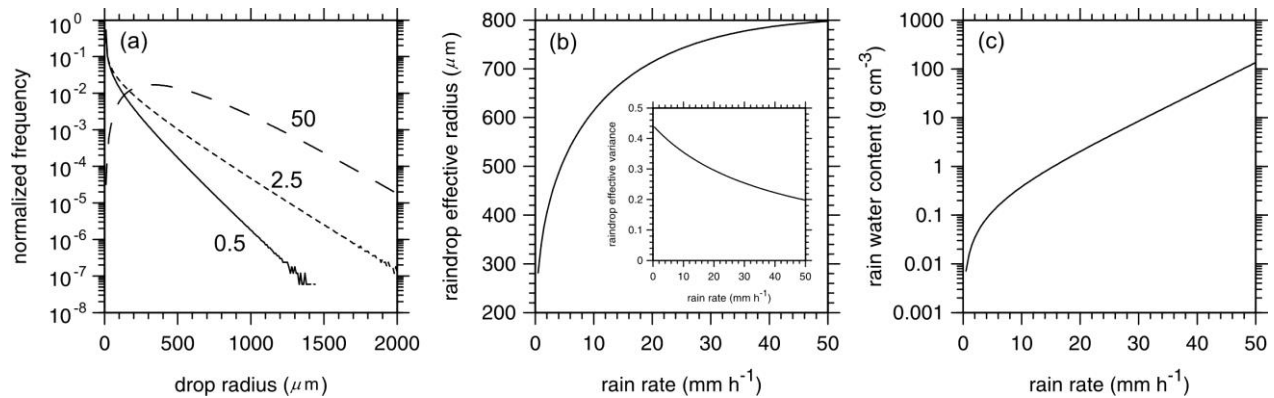
and roughness. Values of d_{eff} range from 10 μm to 120 μm in increments of 5 μm . Band-averaged optical properties were computed using the same weightings as in (10)(10)(10) while also weighting for spectral irradiance and then integrating over RRTMG's spectral intervals. Spectral weight for SW bands was the TOA spectrum while for the LW it was the Planck function at 250 K (per. comm., B. Yi, 2013).

280 4.1.5. ~~Rain~~ Solid hydrometeors and rainsnow

~~Solid hydrometeors are retrieved as though they were of ice cloud, and their optical properties appear as such. In addition to liquid cloud properties, however, ACM-CAP reports water included snow so the optics and radiative effect for snow are not computed explicitly. Rain water content is retrieved layer rain rates R (mm h^{-1}), separately from non-precipitating liquid cloud. Raindrop size distributions are assumed to follow Ulbrich's (1983) gamma distribution. Its single Spectrally-integrated single-scattering properties are defined in a manner similar to using the same spectral weights as liquid cloud droplets discussed in (Section 4.1.3) and in conjunction with Mie scattering properties for applicable to effective droplet radii between from 10 μm to 120 μm and 2000 μm ; larger drops tend to break-up (e.g., Cotton and Gokhale 1967) in increments of 5 μm . Tables of optical properties range from $R = 0.5$ mm h^{-1} to 50 mm h^{-1} in increments of 0.5 mm h^{-1} . Figure 4a shows rain drop size distributions for three values of R for Ulbrich's (1983) formulation using $\mu = 0.056R - 0.74102$ (NB. This μ follows Ulbrich's Eq.2 and differs from μ used elsewhere in this paper). Figure 4b shows corresponding drop effective radius and variance; note that as rain intensity increases, V_{eff} decreases, droplet spectrum narrows, and with this format, Marshall and Palmer's (1948) distribution occurs near $R = 13$ mm h^{-1} , which is, by most standards, fairly heavy rain.~~

285

290



295 **Figure 4:** (a) Raindrop size distributions for three values of rain rate (mm/h). (b) Rain droplet effective radius and variance as functions of rain rate according to Ulbrich's (1983) formulation and the assumed gamma distribution parameter as discussed in section 4.1.5. (c) Rain water content as a function of rain rate.

300 The Mie phase functions that follow from ~~Figure 4~~ and (8) have very pronounced forward peaks that are difficult to capture well in the MC models. Hence, because rain usually resides beneath thick clouds where radiance fields are highly diffuse, the 3D RT models use $P_{HG}(\mu; g)$.

4.2. Optical properties: Underlying surfaces

305 Both 1D and 3D RT models require surface spectral albedos and emissivities. Implicit in the 1D models is the assumption that reflection and emission are Lambertian although. The 1D SW model can handle different albedos for direct and diffuse irradiance.

310 The snow-free surface albedo over land for visible (0.3-0.7 μm) and infrared (0.7-5.0 μm) SW bands were calculated from climatological bidirectional reflection distribution function BRDF parameters for 16-day periods based on 12 years (2002-2013) of MODIS MCD43GF data (Schaaf et al. 2002). Terrestrial snow albedo data for the same spectral bands are based on Moody et al. (2007) whose calculations are were, in turn, based on five years (2000-2004) of climatological statistics of Northern Hemisphere white-sky albedos for 16 International Geosphere-Biosphere Program (IGBP) ecosystem classes when accompanied by the presence of snow on the ground. For ice-covered land or water surfaces, broadband-BB averaged albedos over 16,000 - 50,000 cm^{-1} ; ares provided by X-MET (via ECMWF) will be used.

Ideally, the 3D RT models should include bidirectional reflection and emission functions; such as Rahman et al.'s (1993) land surface model, which is in EarthCARE's SW 3D RT code. ~~F but or land surfaces, however,~~ global parameters are too lacking. Hence, spectral albedos, as just described, and the Lambertian assumption are ~~also~~ used.

For open water surfaces, spectrally-independent ocean albedo is ~~governed~~ approximated by

$$\alpha_{sfc} = 0.021 + x^2 \left(0.0421 + x \left(0.128 + x \left(-0.04 + x \left(\frac{3.12}{5.68 + w} + \frac{0.074x^2}{1 + 3w} \right) \right) \right) \right), \quad (11)$$

where $x = 1 - \cos \theta_i$, θ_i is zenith angle of an incident photon, and w is surface wind-speed (m s^{-1}) (Hansen et al. 1983). ~~The 3D SW model uses (11)(44) for all photons arriving at a water surface. Additionally, it uses Cox and Munk's (1956) ergodic wave model to describe the probability of a SW photon incident at the surface being reflected, with probability defined by (11)(44), toward a BBR telescope. As such, simulated radiances capture some semblance of Sun-glint; the effects of which are tempered by EarthCARE's orbit (Illingworth et al. 2015).~~

~~While the 1D SW model uses (11)(44), with θ_0 replacing θ_i , to describe direct-beam albedo, its diffuse-beam albedo is~~

$$\langle \alpha_{sfc} \rangle = 0.03815 + \frac{0.1486}{5.68 + w} + \frac{0.0026}{1 + 3w}, \quad (12)$$

~~which is just the integral of (11)(44) assuming isotropic irradiance, regardless of sky condition. The 3D RT SW model uses Cox and Munk's (1956) ergodic wave model to describe the probability of a SW photon incident at the surface being reflected toward the BBR. As such, simulated radiances capture Sun glint; the effects of which will be tempered by EarthCARE's orbit and MSI design (Illingworth et al. 2015). In addition~~Last, hemispheric infrared spectral emissivities for land and sea surfaces, for each ~~RRTMG LW~~ RRTMG-LW spectral band, ~~are used for land and sea surfaces and~~ are based on Huang et al. (2016). Like albedo, emissivity is assumed to be Lambertian.

4.3. 1D radiative transfer modelling

335 The 1D RT models in RRTMG are meant to be applied to layered atmospheres with ~~variability of~~ optical properties varying only in the vertical-~~only~~. As RRTMG was designed for use in large-scale models, it comes with algorithms that address unresolved horizontal fluctuations in cloud water content and cloud overlap. These algorithms are not needed for EarthCARE because RRTMG will be applied to individual JSG columns resolved at ~1 km resolution; ~~i.e., entirely cloud-free or filled with homogeneous layers.~~

340 The LW transport solver in RRTMG performs flux calculations for a single diffusivity angle with an adjustment for profiles that contain large H₂O vapour contents. It is an emissivity model that neglects scattering by all atmospheric constituents. Its SW solver employs the multi-layer delta-Eddington two-stream approximation (Wiscombe 1977), which accounts for multiple scattering but, as with the LW solver, has well-documented conditional limitations for aerosol and cloud conditions (e.g., Li and Ramaswamy 1996; Barker et al. 2015a). Nevertheless, due to RRTMG's widespread use at the time of writing, it is used for EarthCARE with a minimum of alterations so as to be consistent
345 with other current applications.

There are three applications of the 1D SW and LW RT models to each valid JSG column along the retrieved cross-section. The first, denoted as “all-sky”, uses the full retrieved profiles. Second is “clear-sky” where clouds are removed leaving molecules and aerosols. The third application is “pristine-sky” in which clouds and aerosols are removed leaving just the molecular atmosphere.

350 4.4. 3D radiative transfer modelling

Monte Carlo solutions of the 3D RT equation are used to calculate both SW and LW fluxes and radiances. This represents a break from, and advancement over, previous satellite missions that ~~exclusively used~~ have been limited to use of 1D RT solvers. The 3D RT models are discussed in the following subsections.

4.4.1. SW radiation

355 Solar fluxes and radiances are computed by a local estimation-based Monte Carlo algorithm (Marchuk et al. 1980; Barker et al. 2003). It is discussed here in general terms, except for aspects that have not been published or were designed specifically for EarthCARE.

Unlike the 1D RT models that act on individual columns, 3D RT models require collections of columns. Photons get injected uniformly across D^+ that are expected to be at most ~60 km along-track by ~30 km across track (see ~~Figure 2~~~~Figure 2~~~~Figure 2~~). Cosine of solar zenith angle μ_0 is uniform over D^+ and set by its central pixel. Total numbers of injected photons per domain are to be determined, as they depend on computational resources, acceptable Monte Carlo sampling noise for either fluxes or radiances, and areal extents of individual D^+ . Number of photons injected per spectral band is proportional to the weight associated with quadrature points in RRTMG's CKD model.

Each atmospheric cell has a spectral cumulative extinction vector whose entries for attenuating constituents are ordered, for efficiency, as: ice cloud; liquid cloud; Rayleigh scatterers; absorbing gases; aerosols; and rain. When an interaction between an attenuator and a photon takes place, a uniform random number between 0 and 1 is generated, the (normalized) extinction vector is searched sequentially thus setting the attenuator, ~~and-with~~ its single-scattering properties used to establish whether absorption or scattering takes place (cf. Barker et al. 2003). When a scattering event occurs, a fraction $1 - \omega_0$ of the photon's weight goes into local heating. What remains has its weight reduced
by a factor ω_0 ~~continues or exits out the top~~.

At each scattering event, the probability of photons being redirected toward a BBR telescope is determined using $p(\mu)$. Transmittance through total optical depth between scattering event and satellite sets the probability of scattered photons ~~getting-reaching to~~ the satellite; as this distance is large and the telescope's aperture small, any path deviation is assumed to result in undetected photons. These contributions are summed to produce final estimates of BBR radiances.

The local estimation method runs into trouble when photons travelling directly toward a telescope undergo a scattering event by cloud particles whose $p(\mu)$ have sharp diffraction peaks (Iwabuchi 2006). Such rare contributions are valid, but they catastrophically elevate uncertainties, which are difficult to counter with large numbers of "typical" contributions when number of injected photons is small, as for EarthCARE. A simple way to help, without impacting fluxes and HRs, is to use the tabulated exact $p(\mu)$ to determine all photon forward trajectories but only those

radiance contributions from the first N_{Mie} scattering events by cloud particles. Thereafter, the blunt-nosed $p_{HG}(\mu; g)$ is used to compute radiance contributions (see Barker et al. 2003).

The rationale behind this approximation is that low-order scatterings that contribute to BBR radiances come largely from $p(\mu < 0)$, and because they do not spike radiances, several of them are allowed so as to capture details of

385 $p(\mu)$. For optically thin clouds there will be few scattering events and so calls to $p_{HG}(\mu; g)$ ~~might~~ will be rare.

For thicker clouds, however, after ~ 3 scatterings photons will have had a fair chance of being redirected onto upward travelling trajectories that can spike radiances. EarthCARE uses $N_{\text{Mie}} = 4$ for, as shown in section 5.2, it strikes a balance between bias and random radiance errors (Barker et al. 2003).

When a photon arrives at the surface, it undergoes Lambertian reflection for albedo α_s with $1 - \alpha_s$ of its weight
390 removed and added to *net* surface irradiance. The probability of being reflected toward a BBR sensor goes according to Lambertian for land, ice and snow, and Cox and Munk (1956) for open water (see section 4.2).

A unique, memory saving, aspect of EarthCARE's SW and LW 3D RT models is that the 3D atmosphere never appears explicitly in them. This is because all columns in D^+ exist along the retrieved cross-section; optical properties of columns off this plane come from a *donor* column in it, as dictated by ACM-3D's scene construction algorithm (Barker et al. 2011; Qu et al. ~~2022~~2023).
395

4.4.2. LW radiation

Longwave radiances are computed using efficiently with the backward Monte Carlo technique (Walters and Buckius 1992; Modest 2003). ~~This approach is very efficient at computing radiances with~~ Cole's (2005) implementation is used for EarthCARE. Much of the code resembles that of the SW Monte Carlo, and so discussion is focused on its
400 unique aspects.

Unlike the SW Monte Carlo, photons are not injected uniformly onto the top of D^+ since the domain itself is the source. Rather, reciprocity of paths from an emission source to a sensor is assumed to hold (Case 1957). Hence, photons ~~get traced~~trace back from the top of the assessment domain to their source of emission where the contribution to radiance is computed using local temperature and optical properties. This process is repeated for each point at

405 the in the assessment domain and radiance view angle. To reduce the number of rays traced, which is often the main computational expense, rather than trace a unique ray for each quadrature point in the CKD model it is assumed that scattering optical properties are the same for all quadrature points in a given wavelength interval.

For a given wavelength interval in the CKD model a band-representative photon path is traced backward from the top of the domain to determine a scattering path that can be related to each photon injected for each quadrature point in the band. The photon travels ~~in~~ straight through the domain until it has accumulated sufficient scattering optical depth to scatter in the atmosphere or scatter due to an interaction with the surface. Scatter within the atmosphere is determined based on the cumulative distribution of scattering extinction; similar to that in the SW algorithm. For each quadrature point in CKD wavelength interval a random number is determined which sets the optical depth that must be accumulated to have an absorption event. Absorption optical depth is accumulated along the path until the
 410 photon undergoes an absorption event at which point $(1 - \omega_0)B(T)$ is added to the radiance, where $B(T)$ is integrated Planck function, and T is temperature. If, however, the photon ~~is~~ reaches the surface, a uniform random number is used to determine if there is absorption ~~by~~ by the surface. -If the random number is less than the surface emissivity ϵ the, radiance is incremented by $B(T_s)$, where ~~ϵ and T_s are surface emissivity and is the surface temperature.~~ Otherwise the path is reflected by the surface.

420 Upward thermal flux at a, potentially variable, reference height is also computed. This is done using a method similar to that used for radiances. The main difference being the selection (i.e., random generation) of the direction of each ray injected into the domain from the reference height. Once the ray direction is selected, accumulation of emission contributions is the same as it is for radiances.

4.4.3. Estimation of Monte Carlo uncertainty

425 For a fixed domain, 1D RT models ~~yield~~ produce single deterministic solutions. Monte Carlo algorithms, however, yield a sample from a distribution. In general, the breadth of the distribution, or Monte Carlo uncertainty, depends on the number of injected photons ~~per sample~~, the variable being diagnosed, and the geometric and optical properties of the field.

Monte Carlo uncertainties are estimated by explicitly producing M samples of a random variable x , each using N_s photons/~~simulation~~ and initialized with a unique, uniformly distributed, random number. Estimated population mean is simply

$$\hat{\mu}_x(M, N_s) = \frac{1}{M} \sum_{m=1}^M x(m, N_s), \quad (13\del{13}12)$$

where $x(m, N_s)$ is the m^{th} realization of x ; ~~i.e., estimates for the m^{th} simulation.~~ From the central limit theorem,

$$\lim_{M \rightarrow \infty} p \left[\left| \frac{\hat{\mu}_x(M, N_s) - \mu_x}{\frac{\sigma_x(M, N_s)}{\sqrt{M}}} \right| \leq a \right] = \frac{1}{\sqrt{2\pi}} \int_{-a}^a e^{-u^2/2} du, \quad (14\del{14}13)$$

where μ_x and σ_x are mean and standard deviation of the population from which samples are drawn. Letting $\hat{\sigma}_x(M, N_s)$ be an estimate of σ_x based on M samples, Monte Carlo “uncertainty” is defined as one standard deviation under a Gaussian distribution of samples. This amounts to setting $a = 1$ in ~~(14)(14)(13)~~, and implies that after M realizations, $\hat{\mu}_x$ has a 68% chance of lying in

$$\left[\hat{\mu}_x(M, N_s) - \frac{\hat{\sigma}_x(M, N_s)}{\sqrt{M}}, \hat{\mu}_x(M, N_s) + \frac{\hat{\sigma}_x(M, N_s)}{\sqrt{M}} \right], \quad (15\del{15}14)$$

making for an uncertainty of

$$\hat{\rho}_x(M, N_s) \approx \pm \frac{\hat{\sigma}_x(M, N_s)}{\sqrt{M}}. \quad (16\del{16}15)$$

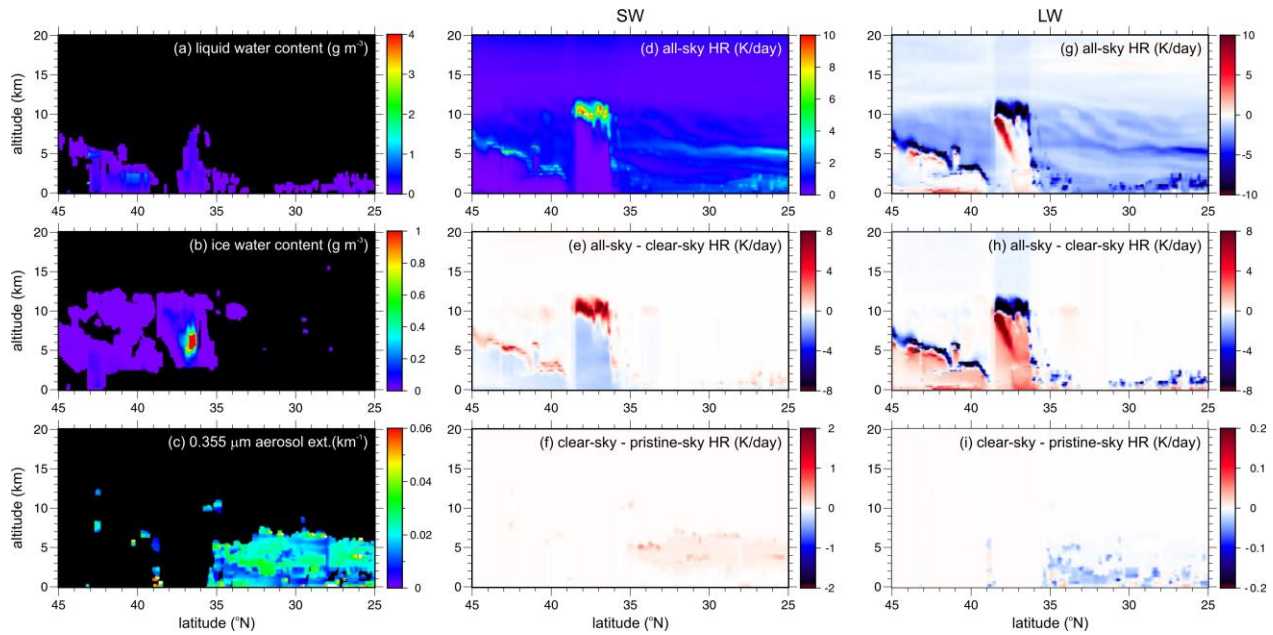
~~This is an approximation as it arises only as $M \rightarrow \infty$.~~ As M increases, estimates of $\hat{\sigma}_x$ stabilize; they do not go to zero.

5. Results

445 This section's main purpose is to showcase a ~~small~~ sample of EarthCARE's radiation products; some of which get utilized directly for radiative closure assessment as will be reported in a later study. Results are shown using only ACM-CAP data; corresponding results for ACM-COM's composites are qualitatively the same.

~~As noted in Sec. 1 the Introduction, many of the radiative quantities are averaged over $\sim 100 \text{ km}^2$ assessment domains. In practice, it is expected that these domains will be configured to be 21 km along-orbit-track and by 5 km across-track-orbit. This is to strike a balance for closure assessment between a domain that is far from the track of the active sensors, for which limiting the scene construction algorithm's (Qu et al. 2023) would have increasing impact on the results radiance and flux estimates, yet facilitating horizontal transport of photons, and a very narrow but long domain along orbit that would make interpretation of the closure difficult. The use of 21 km along orbit rather than 20 km is due to the 7 km period of the horizontal grid used for retrievals (Eisenger et al, 2022). For simplicity~~

450 ~~in~~To simplify presenting theation of results, radiative transfer ~~results, variable~~ estimates are shown for a -reference height of 20 km (cf. Loeb et al, 2002)~~s are not used in the radiative transfer calculations although they will be in the; operational application of ACM RT in operations they will vary. Instead a constant reference height of 20 km is used which has been shown to be a suitable height for Earth radiation budget studies (Loeb et al, 2002).~~



460 **Figure 554:** (a) Profiles of domain-average cloud liquid water content, (b) ice water content, and (c) aerosol extinction coefficient for 21 km-long assessment domains, for the *Halifax* frame, as inferred by ACM-CAP's synergistic algorithm. (d) Corresponding domain-average, all-sky SW broadband heating rates computed by RRTMG's 1D RT model. (e) Difference between HRs shown in (d) and those computed by RRTMG for clear-sky conditions. (f) As in
 465 (e) except these HR differences are for clear-skies and pristine-skies. (g), (h), and (i) are as in (d), (e), and (f), respectively, except these are for LW broadband heating rates.

5.1. RRTMG 1D fluxes: Pristine-, clear-, and all-sky

As discussed in section 2, broadband flux and heating rate profiles for all admissible L2 columns are computed by
 470 RRTMG's SW and LW 1D RT models. The left column of [Figure 5Figure 5Figure 4](#) shows ~2,200 km of cloud and aerosol properties retrieved by ACM-CAP's synergistic algorithm (Mason et al. [20222023](#)). These results pertain to 21 km-long non-overlapping assessment domains near the central of the *Halifax* test frame. The middle column shows corresponding SW all-sky HRs and differences between all-sky HRs and clear-sky HRs (cloud radiative effect: CRE), and clear-sky HRs and pristine-sky HRs (aerosol direct effect: ADE). Aside from the usual 1D RT
 475 features, such as large SW heating near cloudtop and much smaller values below relative to clear-sky, the only peculiarity is the fairly strong heating at ~5 km altitude in the south-end. This is due to an elevated layer of water vapour. The vast majority of minor heating due to aerosol is from continental pollution that overrides sea salt.

The rightmost column in [Figure 5Figure 5Figure 4](#) is like the middle column but it shows results for LW HRs. As expected, there is strong cooling in the upper 1 - 2 km, or so, of clouds, little net heating or cooling below, and

480 general cooling from cloudless-skies. LW CREs are generally stronger than in the SW and exhibit strong cooling near all cloudtops and warming in clouds, when they are of sufficient vertical extent. LW ADEs are an order of magnitude smaller than their SW counterparts, and manifest themselves as cooling just beneath their SW warming counterparts.

485 To demonstrate what will be available in the ACM-RT archive, ~~Figure 6~~~~Figure 6~~~~Figure 5~~ shows TOA CRE, ADE, and some integrated cloud and aerosol properties that correspond with ~~Figure 5~~~~Figure 5~~~~Figure 4~~. Some noteworthy points here are SW CRE reaching $\sim 300 \text{ W m}^{-2}$ at $\mu_0 \approx 0.3$ due to clouds near 41°N with large cloud water paths (CWP), LW CRE reaching -100 W m^{-2} near 37°N due to supercooled liquid aloft, and weak ADE ($\sim -10 \text{ W/m}^{-2}$ in the SW and less than -1 in the LW) stemming from aerosol optical depth, at $0.355 \mu\text{m}$, being at most 0.2. Aside from this, there is very little to comment on in these plots; they serve to demonstrate what will be available in the ACM-
490 RT archive.

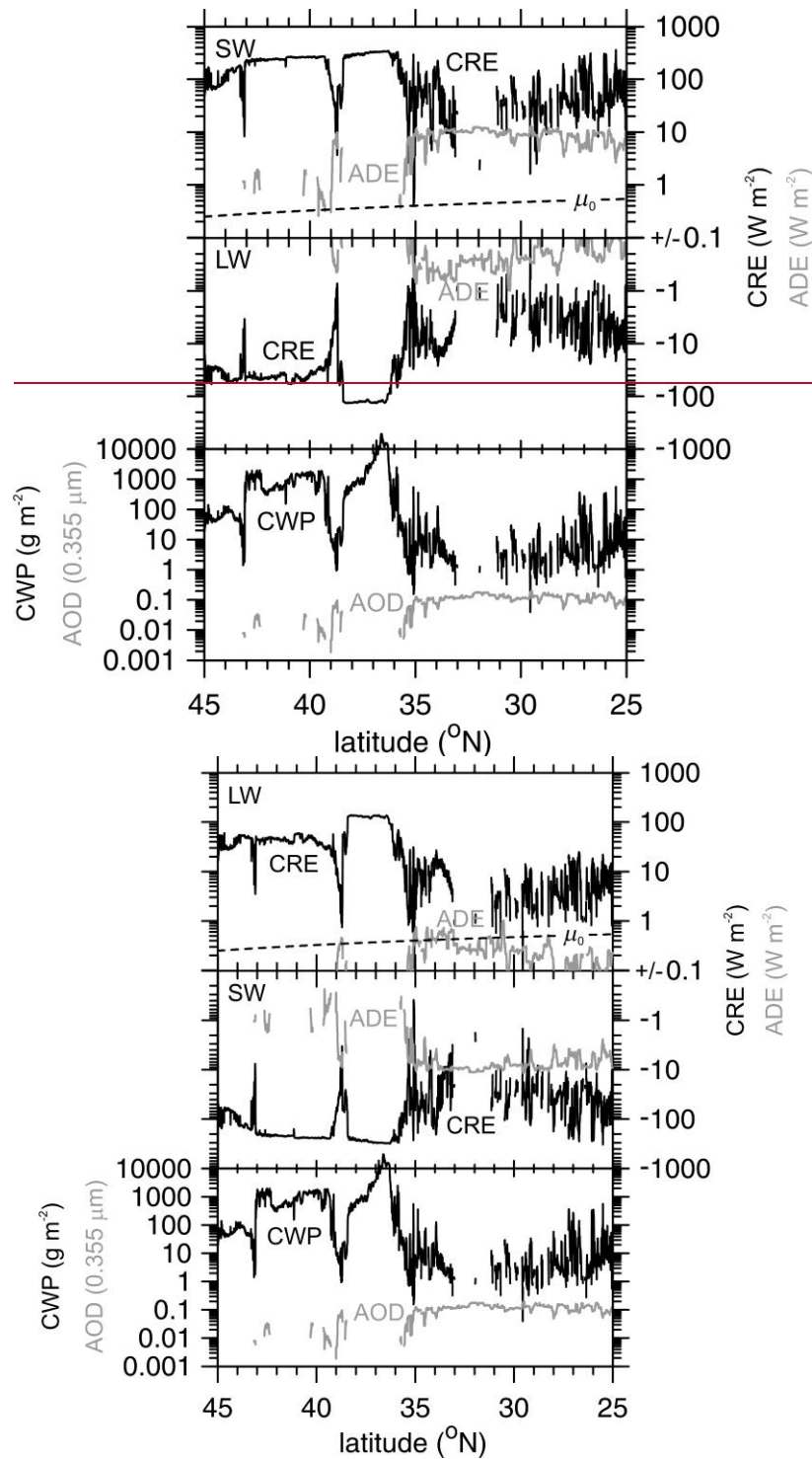
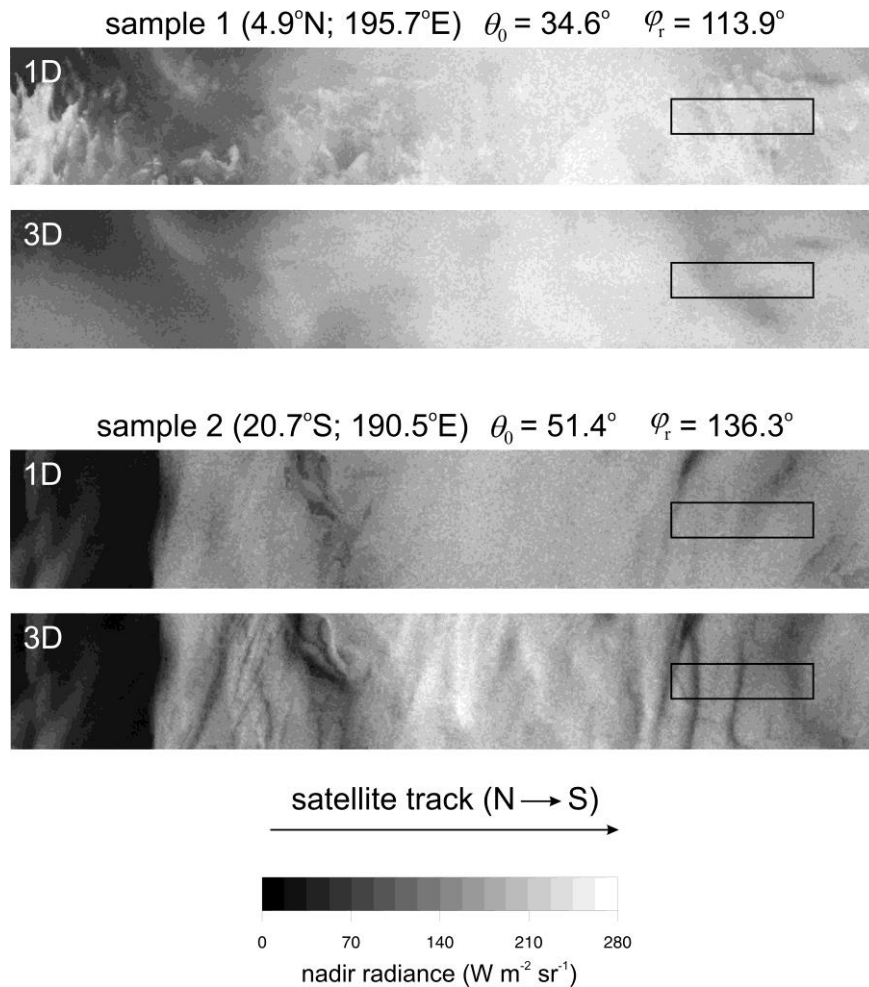


Figure 665: Top panel: Cloud radiative effect (CRE) and aerosol direct effect (ADE) as functions of latitude for broadband SW at an altitude of 20 km for 21 km-long assessment domains as shown in [Figure 5](#)[Figure 5](#)[Figure 4](#).

μ_0 is cosine of solar zenith angle. Middle panel: As in top panel except it is for broadband LW. Lower panel: Assessment domain-average cloud water path (CWP) and aerosol optical depth (AOD).

5.2. On the benefits of employing 3D RT models

500 As mentioned above, one of EarthCARE's notable advancements over prior like-missions is operational use of both 1D and 3D RT models. The decision to use 3D RT models was fuelled by myriad studies that show systematic differences between 1D and 3D treatments of RT, especially for cloudy atmospheres at solar wavelengths. Results shown in this subsection help justify the computational expensive of using 3D RT models operationally.



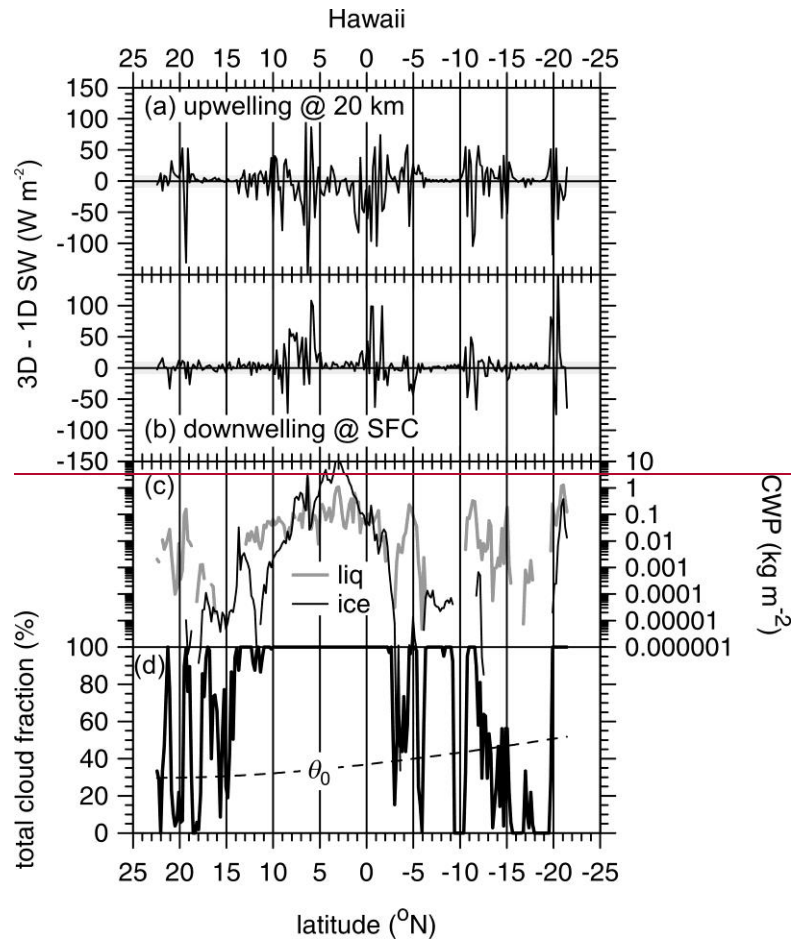
505 **Figure 776:** Nadir broadband SW radiances for two sample regions in the Hawaii frame; both regions measure 128 km along-track by 20.25 km across-track. Small rectangles indicate a 5 x 21 km assessment domain. Central values of latitude and longitude are listed along with θ_0 and φ_r (measured clockwise from the satellite's tracking direction). Labels 3D and 1D indicate RT model dimensionality using horizontal grid-spacings of 0.25 km and 10^6 km.

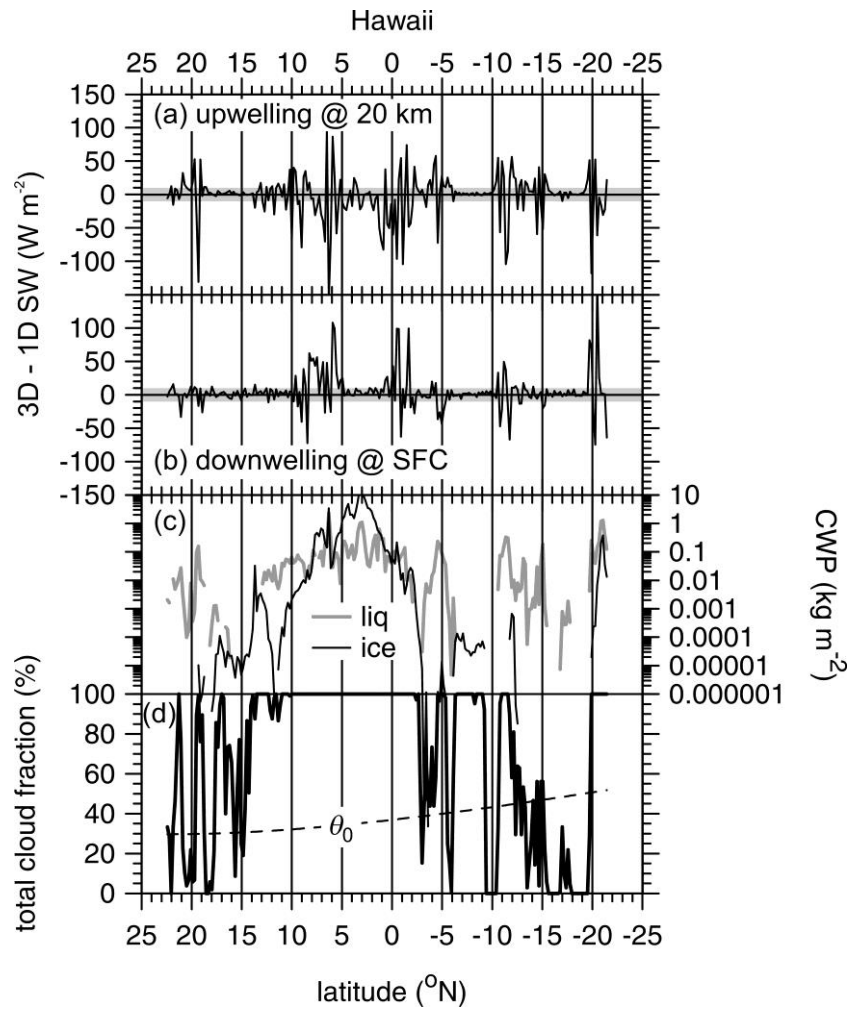
510 Before getting to results that apply strictly to EarthCARE, consider a detailed view of the impact of neglecting multi-dimensional RT. [Figure 7](#)[Figure 7](#)[Figure 6](#) shows nadir SW radiances simulated by a Monte Carlo RT model (Ville-

franque et al. 2019) for two stretches of the *Hawaii* test frame, each measuring 128 km along-track by 20.25 km across-track (Qu et al. 2023). The 3D RT simulation used horizontal grid-spacing $\Delta x = 0.25$ km while its 1D rendition used Δx set arbitrarily large. Hence, differences in their radiances stem entirely from the dimensionality of the RT solution. For this demonstration, the number of photons per column was 4,096, which is, on an areal density-basis, several times larger than what will be used operational for the EarthCARE mission.

These images display the varied and complicated ramifications on radiances when 1D RT modelling theory is assumed to apply. For sample 1, 1D radiances show much variability and sharp contrasts relative to their 3D counterparts; off-nadir views (not shown) look much the same. This region is blanketed by thick overcast ice cloud, which at $\Delta x = 0.25$ km, act to diffuse upwelling radiation, thus blurring localized reflection from low-level intermittent liquid clouds (e.g., Diner and Martonchik 1984). When 1D RT is affected by setting Δx large, however, flow of radiation is confined to the vertical and the sharp features of liquid clouds remain intact regardless of altitude.

On the other hand, sample 2 has mostly low-to-mid-level liquid clouds and shows, due in part to large θ_0 , the more familiar differences between 3D and 1D RT (e.g., Barker et al. 2017). In particular, 1D radiances lack texture, whilst their 3D counterparts exhibit much contrast due to shadowing and cloud-side illumination. Note, however, that imagery for thin liquid clouds at the northern edge of the sample depend little on Δx . This is because reflected photons undergo small numbers of scattering events and thus tend to exit clouds close to where they enter.





530

Figure 887: (a) Difference between upwelling SW fluxes at an altitude of 20 km as predicted by 3D and 1D RT models for 5 x 21 km assessment domains of the Hawaii frame. Shaded area indicates EarthCARE's goal of ± 10 W m^{-2} . (b) As in (a) except this is for SW surface irradiance. (c) Mean liquid and ice cloud water paths for the Hawaii frame's 5 x 21 km domains. (d) Corresponding total cloud fraction and solar zenith angle for the same assessment domains.

535

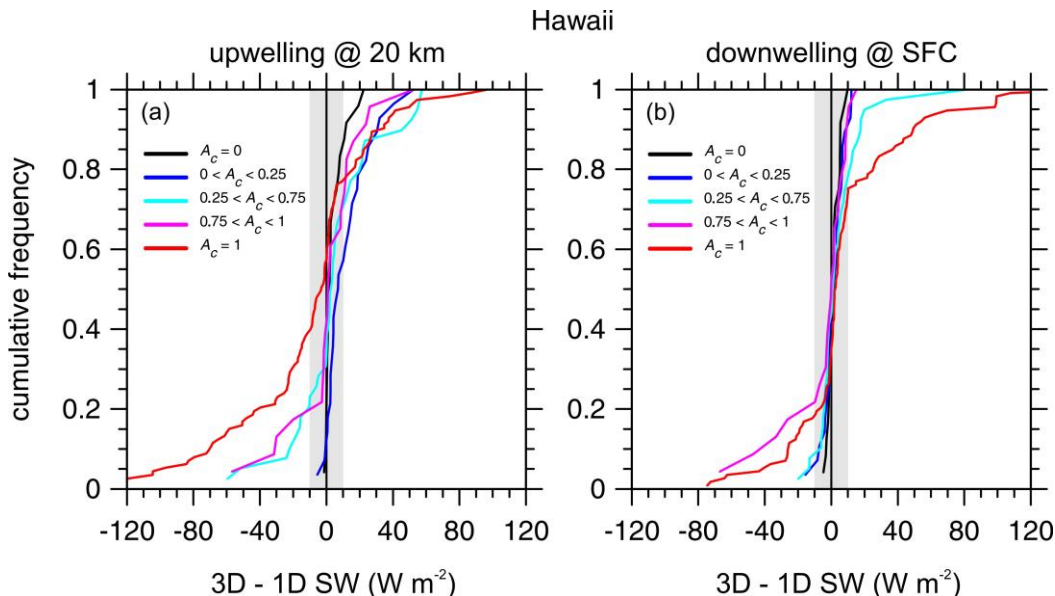
Consider now differences one can encounter in applications to EarthCARE retrievals. [Figure 8](#)[Figure 8](#)[Figure 7](#) shows differences between 3D and 1D RT modelled SW broadband upwelling fluxes at 20 km and surface irradiances for 5 x 21 km assessment domains across the *Hawaii* frame using ACM-CAP cloud properties. Values for 3D and 1D RT are from the Monte Carlo model using $\Delta x = 1$ km and arbitrarily large Δx , respectively. Each simulation used 2.5×10^6 photons, which is likely much larger than what will be used operationally throughout the mission. For almost cloud-free skies, thin ice cloud-only with ice water path IWP < 0.01 kg m^{-2} , and very thick clouds with CWP > 0.5 kg m^{-2} , differences are well within ± 10 W m^{-2} for fluxes at both levels. Clearly, under these conditions

540

SW photon trajectories are characterized by either extremely small or large numbers of scattering events with cloud particles for both 1D and 3D RT. For the majority of other cloud conditions, however, especially with CWP in the vicinity of $\sim 0.1 \text{ kg m}^{-2}$, differences can be much larger than $\pm 30 \text{ W m}^{-2}$, which far exceeds EarthCARE's goal (ESA 2001; Illingworth et al. 2015; Eisinger et al. 2022, 2023). The implication being that many attempts to perform a radiative closure assessment on EarthCARE's retrievals will be doomed to failure if 1D RT models are adhered to.

Figure 9 ~~*Figure 9*~~ ~~*Figure 8*~~ shows cumulative frequency distributions of the differences shown in *Figure 8* ~~*Figure 8*~~ ~~*Figure 7*~~ for several ranges of total cloud fraction A_c . For upwelling fluxes at 20 km with $A_c < 0.25$, median differences are all close to zero. The same goes for 3D - 1D mean-bias errors (MBEs) as listed in *Table 1* ~~*Table 1*~~ ~~*Table 1*~~. Differences tend to be distributed more or less symmetrically about zero with occasional large differences, exceeding $\pm 50 \text{ W m}^{-2}$, enhancing root mean-square errors (RMSEs) as A_c increases (see *Table 1* ~~*Table 1*~~ ~~*Table 1*~~) relative to the 16- and 84-percentiles of the distributions, which can be gleaned from the graphs.

There are at least two interesting points to these plots that involve extremal cloud conditions. First, 3D - 1D can be expected to be maximized for overcast domains, which implies that the geometry of overcast clouds is often anything but approximately plane-parallel and homogeneous (cf. Hogan et al. 2019). Second, for assessment domains D with $A_c = 0$, 3D - 1D values for upwelling flux at 20 km show a tendency to be positive on account of contributions from clouds in the surrounding buffer-zone (see *Figure 2* ~~*Figure 2*~~ ~~*Figure 2*~~).



560

Figure 998: (a) Cumulative frequency distributions for differences between 3D and 1D Monte Carlo RT model estimates of upwelling SW flux at an altitude of 20 km for 5 x 21 km assessment domains for the Hawaii frame partitioned according to assessment domain total cloud fraction A_c (see [Table 1](#) [Table 1](#) and [Figure 8](#) [Figure 7](#)). Shaded area indicates EarthCARE’s goal of $\pm 10 \text{ W m}^{-2}$. (b) As in (a) except these are for surface (SFC) irradiances.

565

Table 1: Mean 3D SW RT values, mean bias errors (MBEs), and root mean-square errors (RMSEs) for corresponding 3D - 1D RT results (see [Figure 8](#) [Figure 8](#) [Figure 7](#) and [Figure 9](#) [Figure 9](#) [Figure 8](#)) for 5 x 21 km assessment domains for the Hawaii frame and several ranges of total cloud fraction A_c .

		upwelling flux at 20 km			SFC irradiance		
		(W m ⁻²)			(W m ⁻²)		
total cld frac	cases	3D RT	MBE	RMSE	3D RT	MBE	RMSE
$A_c = 0$	24	81.0	4.2	6.2	698.0	1.5	3.6
$0 < A_c < 0.25$	28	93.5	12.2	13.8	780.0	1.5	6.3
$0.25 < A_c < 0.75$	39	112.0	5.0	25.2	755.9	4.6	16.1
$0.75 < A_c < 1$	23	128.0	1.3	21.6	777.0	-5.6	19.7
$A_c = 1$	113	395.5	-11.5	41.8	462.7	8.6	35.2

570

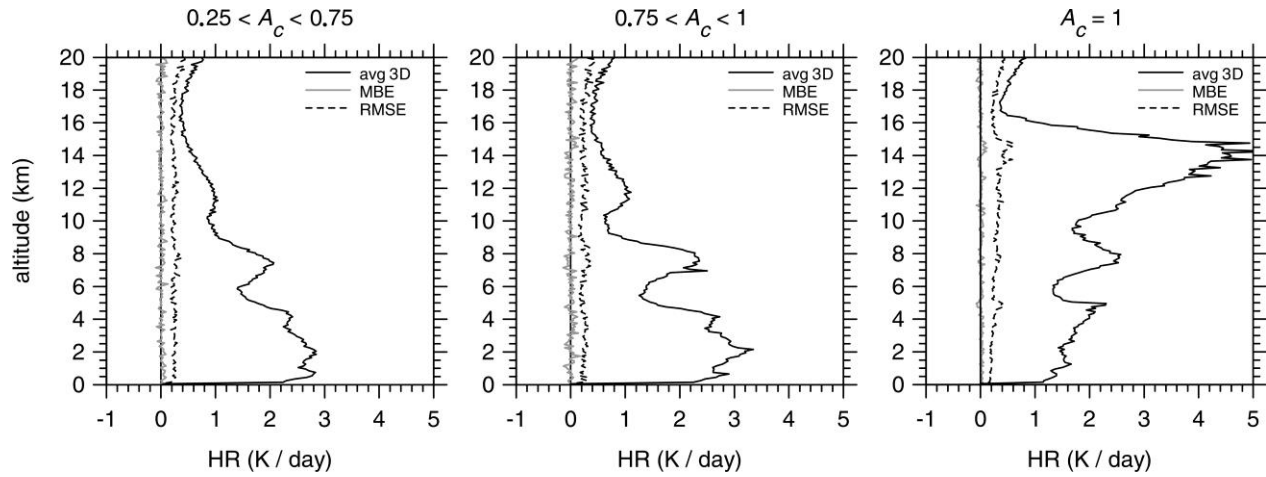
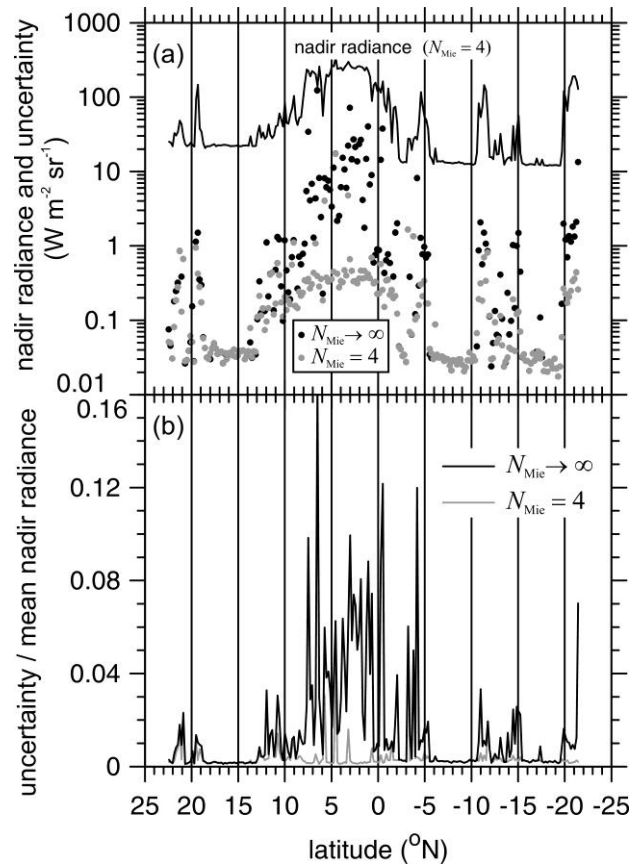


Figure 10: Mean 3D RT SW heating rate (HR) profiles for 5 x 21 km assessment domains for the Hawaii frame partitioned according to assessment domain total cloud fraction A_c (see [Figure 8](#) [Figure 8](#) [Figure 7](#)). Also shown are mean bias errors (MBEs) and root mean-square errors (RMSEs) between 3D and 1D RT models. Numbers of cases per A_c range are listed in [Table 1](#) [Table 1](#) [Table 1](#).

575

[Figure 10](#) [Figure 10](#) [Figure 9](#) shows that SW HR differences between 3D and 1D RT for the Hawaii frame's 5 x 21 km assessment domains are much less dramatic than those seen in [Figure 8](#) [Figure 8](#) [Figure 7](#) and [Figure 9](#) [Figure 9](#) [Figure 8](#) for boundary fluxes. At all altitudes and ranges of A_c , MBEs are essentially zero and close in magnitude to Monte Carlo uncertainties for 2.5×10^6 photons. There are several reasons why RMSE values are ~ 10 x larger than Monte Carlo uncertainties, and only increase slightly as A_c increases. There are the obvious differences due to cloud side illumination, shadowing, and photon entrapment (Hogan et al. 2019), as well as impacts on flux profiles for 3D RT due to out-of-domain sources and sinks of photons; i.e., clouds outside D , but still in D^+ , that cast shadows or scatter radiation into D .

580



585

Figure 11440: (a) Line is 3D RT nadir broadband radiances using $\Delta x = 1$ km when reverting to the Henyey-Greenstein phase function p_{HG} after $N_{Mie} = 4$ cloud particle scattering events for 5×21 km assessment domains of the Hawaii frame. Dots are Monte Carlo uncertainties when p_{HG} is never used ($N_{Mie} \rightarrow \infty$) and when it is used after 4 cloud scattering events ($N_{Mie} = 4$). (b) Using data in (a), Monte Carlo domain-average uncertainties relative to mean values for both values of N_{Mie} . Each domain received 2.5×10^6 photons.

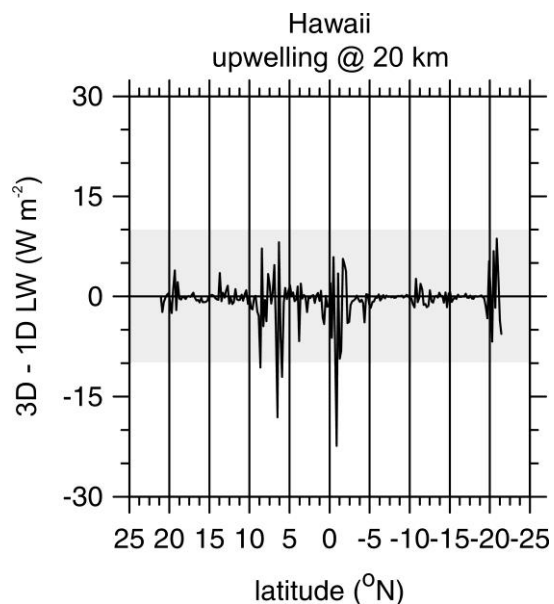
590

There is the possibility that radiative closure assessments of cloud and aerosol retrievals could (i.e., should) use broadband radiances rather than fluxes. There are reasons both for and against this. For instance, off-nadir BBR radiances offer powerful assessments due to their weak-weak correlation, relative to nadir BBR radiances, with MSI radiances that are used for some retrievals. They can, however, arise from attenuators outside the domain being assessed (see Barker et al 2015b). On the other hand, all of EarthCARE's performance goals are in terms of BBR fluxes, which will be estimated regularly by tailor-made algorithms (Velázquez-Blázquez et al., 2022, 2023a) despite adding, at times substantial, uncertainty at the last step of EarthCARE's processing chain.

595

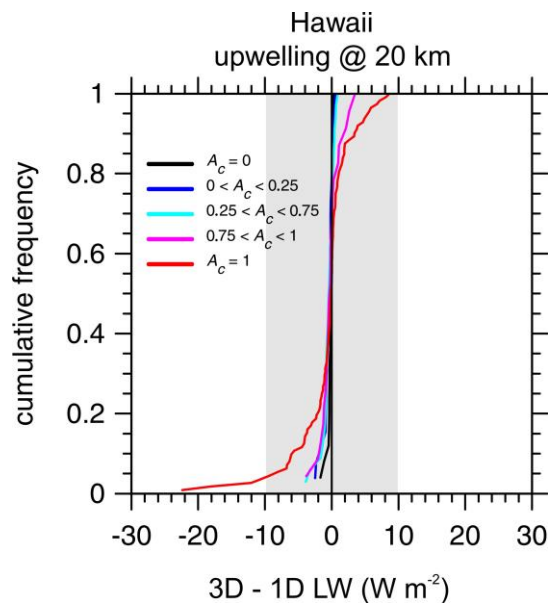
Regardless, SW BBR radiances will be estimated throughout the mission. [Figure 11](#)~~Figure 11~~~~Figure 10~~ shows nadir values for the *Hawaii* frame’s assessment domains using 2.5×10^6 photons per assessment domain and $\Delta x = 1$ km. It also shows relative Monte Carlo uncertainties for $N_{\text{Mie}} = 4$ and $N_{\text{Mie}} \rightarrow \infty$. As 2.5×10^6 photons / domain is likely to be more than routine operations can afford, uncertainties for $N_{\text{Mie}} \rightarrow \infty$ could be substantially larger than those shown here. This would render them useless for most assessments. While use of $N_{\text{Mie}} = 4$ will help, as is evident for the thick clouds between 0° to 10° N and near 20° S, it will foster errors in radiances themselves. Two options are being considered: i) use radiances, instead of fluxes, for assessments when their relative Monte Carlo uncertainties are less than some specified value (e.g., 0.01; see [Figure 11](#)~~Figure 11~~~~Figure 10~~); and ii) unbiased variance reduction methods (e.g., Iwabuchi 2006).

As is well known, flux and radiance differences between 3D and 1D treatments of RT for LW radiation are usually much smaller than those for SW radiation (e.g., Ellingson and Takara 2005; Cole et al. 2005; Hogan et al. 2016; Fauchez et al. 2017). [Figure 12](#)~~Figure 12~~~~Figure 11~~ shows the LW counterpart of the upper panel in [Figure 8](#)~~Figure 8~~~~Figure 7~~. When differences go beyond $\pm 10 \text{ W m}^{-2}$, they do so along with corresponding large differences in SW fluxes; typically for overcast skies with CWP $\sim 0.1 \text{ kg m}^{-2}$. As shown in [Figure 13](#)~~Figure 13~~~~Figure 12~~, $\sim 5\%$ of overcast cases exhibit 3D fluxes that are less than their 1D counterparts by more than 10 W m^{-2} . For these domains, CWPs are small relative to their neighbouring domains. This demonstrates a difficulty when interpreting “fluxes” for 5×21 km domains: at 20 km altitude, fluxes for 3D RT can be influenced substantially by adjacent cloudier domains. [Table 2](#)~~Table 2~~~~Table 2~~, however, shows that 3D and 1D fluxes usually differ by less than $\pm 1 \text{ W m}^{-2}$ which is on the order of the Monte Carlo uncertainty for these calculations, roughly 0.2 W m^{-2} .



620

Figure 121211: Difference between upwelling LW fluxes at an altitude of 20 km as predicted by 3D and 1D RT models for 5 x 21 km assessment domains of the Hawaii frame. A positive value means that 3D upwelling flux exceeds its 1D counterpart. Shaded area indicates EarthCARE's goal of $\pm 10 \text{ W m}^{-2}$.



625

Figure 131312: Cumulative frequency distributions for differences between 3D and 1D RT model estimates of upwelling LW flux at an altitude of 20 km for 5 x 21 km assessment domains for the Hawaii frame partitioned according to assessment domain total cloud fraction A_c (see [Table 2Table 2Table 2](#)). Shaded area indicates EarthCARE's goal of $\pm 10 \text{ W m}^{-2}$.

630 **Table 2:** Mean 3D LW RT values, mean bias errors (MBEs), and root mean-square errors (RMSEs) for corresponding 3D - 1D RT results (see [Figure 8](#)~~Figure 8~~[Figure 7](#) and [Figure 9](#)~~Figure 9~~[Figure 8](#)) for 5 x 21 km assessment domains for the Hawaii frame and several ranges of total cloud fraction A_c .

total cld frac	cases	upwelling flux at 20 km (W m ⁻²)		
		3D RT	MBE	RMSE
$A_c = 0$	25	285.4	-0.2	0.4
$0 < A_c < 0.25$	26	289.2	-0.5	0.7
$0.25 < A_c < 0.75$	34	286.0	-0.5	1.0
$0.75 < A_c < 1$	23	287.5	-0.2	1.5
$A_c = 1$	112	208.9	-0.7	4.3

6. Summary

The EarthCARE satellite mission's objective is to retrieve profiles of aerosol and water cloud physical properties from measurements made by its cloud-profiling radar (CPR), backscattering lidar (ATLID), and passive multi-spectral spectral imager (MSI). While several L2a processes infer geophysical properties using measurements from a single sensor (see several articles in this special issue), EarthCARE's primary product comes from the L2b synergistic retrieval algorithm in ACM-CAP (Mason et al., [2022](#)~~2023~~). These retrievals, together with other geophysical properties obtained either from pre-existing satellite data or real-time weather prediction models, are input into broadband (BB) radiative transfer (RT) models that predict radiances, and fluxes, commensurate with measurements made, and inferred from, ~~independently by~~ EarthCARE's BB radiometer (BBR). The scientific goal is that modelled and "observed" BB fluxes differ, on average, by less than ± 10 W m⁻².

640

This report described the BB RT models used for EarthCARE and their products, which together comprise the ACM-RT process. Shortwave (SW) and longwave (LW) flux and heating rate (HR) profiles are computed by ~~the a~~ 1D solver, -based on RRTMG, for each ~1 km nadir column of inferred properties. In addition to the 1D RT models, which are ubiquitous to almost all operational and research satellite missions, EarthCARE is the first to employ 3D (Monte Carlo) RT models operationally. Both SW and LW models will compute radiances for the BBR's three

645

viewing directions, with the SW model also computing ~~BB~~-flux and HR profiles. The 3D LW model produces only upwelling fluxes at a variable reference level as dictated by the BMA-FLX process (Velázquez-Blázquez et al., ~~2022a~~2023a). All 3D RT products are averages over 5×21 km “assessment domains” that are constructed in the ACM-3D process (Barker et al. ~~2022~~2023) using a radiance mapping algorithm (~~Barker et al. 2011~~) and MSI data (Barker et al. 2011).

When the ACM-CAP process runs successfully, its retrievals are operated on by the RT models. Failing this, the RT models are applied to “composite” atmospheric profiles generated in the ACM-COM process by combining L2a retrievals from individual sensors. Usually, this involves filling grid-cells with retrievals from either CPR *or* ATLID data. When two L2a estimates exist for a cell, the one with the least relative uncertainty is selected. ACM-COM also prepares either ACM-CAP or composite atmospheres for use in RT models by bringing together information about atmospheric state and surface optical properties. Regardless of what atmosphere is used, nadir profiles are broadened across-track by mapping indices from ACM-3D in order to create 3D domains for the 3D RT models to use. A subset of ACM-RT’s products ~~are~~is passed forward to the ACMB-DF process where a “radiative closure assessment” executes in an attempt to quantify the likelihood that EarthCARE’s goal has been achieved.

Data from the EarthCARE test frames (Qu et al. ~~2022~~2023; Donovan et al. ~~2022~~2023) were used to demonstrate some of the products to be expected from ACM-COM and ACM-RT. In several respects, products associated with the 1D RT models resemble closely those available via~~from~~ the CloudSat mission (e.g., L’Ecuyer et al. 2008). The most notable extension is that ACM-RT will be reporting continuous cloud and aerosol radiative effects based on 3D RT model results.

The majority of the results reported here (see section 5.2), ~~however~~, had to do with the benefits expected from operational application of 3D RT models. The ACM-RT process is the most computationally intensive one in EarthCARE’s processing chain. While a significant amount of computer time is required by both of the 1D RT models and 3D LW RT model, the lion’s share of ACM-RT’s allocated time is consumed (inevitably entirely) by the 3D SW RT model. Its voracity is such that only a portion of a frame’s available assessment domains will be operated on; the expectation being~~is~~, however, that sufficient numbers of samples will be realized over the duration of the mission. This is primarily~~because~~ of the fairly large number of photons that have to be injected into the Monte Carlo RT model in order to produce flux and radiance estimates with uncertainties small enough to realize beneficial radiative

675 closure assessments in the ACMB-DF process (Barker et al. ~~2022~~2023). The most demanding product is off-nadir
 radiances. ~~Finalization of exactly what the 3D RT models produce. Despite limited attempts to reduce Monte Carlo~~
~~variance, it still might be necessary to limit computation to nadir radiance and one off nadir radiance. Moreover,~~
~~there is still the option to forego the radiances, thereby increasing greatly the number of assessment domains with 3D~~
~~SW RT fluxes, and use just fluxes in ACMB-DF. This~~ will be determined during EarthCARE's commissioning
 680 phase.

If results presented in ~~Table 1~~~~Table 1~~ and *Figures 5* through *7* can be taken as representative, operational use
 of SW 3D RT modelling will be well-worth ~~the its~~ heavy computational load ~~to be incurred~~. This is because differ-
 ences between 3D and 1D RT values of upwelling fluxes and radiances can be either positive or negative (cf. Hogan
 et al. 2019) and can often exceed EarthCARE's goal of being able to, effectively, retrieve properties to within ± 10
 685 W m^{-2} ; ~~of course t.~~ The tacit warning here is that continued reliance on just 1D RT models would amount to a height-
 ened frequency rate of radiative closure assessments being unwittingly nullified.

Data availability

The EarthCARE Level-2 demonstration products the ACM-COM products discussed in this paper are available from
<https://doi.org/10.5281/zenodo.7117115> (van Zadelhoff et al., 2022) as are “operational” ACM-RT output. Special-
 690 ized ACM-RT calculations presented in this paper, e.g., with increased photon count, and radiative transfer calcula-
 tions are available from <https://doi.org/10.5281/zenodo.7272662> (Cole et al., 2022).

Competing interests

The authors have no competing interests to declare.

Author contributions

695 HWB drafted the manuscript, ~~and~~ developed the ACM-RT and ACM-COM algorithms, and the 3D solar radiative
 transfer model used in ACM-RT.- JNSC developed the ACM-RT processor software ~~and, developed~~ the 3D thermal

radiative transfer model, ~~and~~ performed all ACM-RT calculations, ~~and drafted sections of used in~~ the manuscript. ZQ developed ACM-COM's algorithms and software plus aerosol look-up table for ACM-RT. NV contributed to ~~the~~ development and testing of ACM-RT and performed independent 3D solar radiative transfer calculations. MS integrated the 1D ~~radiative transfer~~RRTMG model into ACM-RT. All authors were involved in development of ACM-RT and ACM-COM and contributed material and ~~or~~ text to the manuscript.

Acknowledgements

We are especially indebted to Dr. Tobias Wehr, who passed away on 1-Feb-2023, for his unwavering support and encouragement over many years of work. We also wish to thank Tobias Wehr and Michael Eisinger and all Earth-CARE algorithm development team members for their continuous ongoing support over many years and the Earth-CARE developer teams for valuable discussions in various meetings.

References

- Alvarado, M.J., V. H. Payne, E. J. Mlawer, G. Uymin, M. W. Shephard, K. E. Cady-Pereira, J. S. Delamere, and J.-L. Moncet, 2012: Performance of the line-by-line radiative transfer model (LBLRTM) for temperature, water vapor, and trace gas retrievals: Recent updates evaluated with IASI case studies, submitted to ACPD acp-2012-813.
- Barker, H. W., R. K. Goldstein, and D. E. Stevens, 2003: Monte Carlo simulation of solar reflectances for cloudy atmospheres. *J. Atmos. Sci.*, **60**, 1881-1894.
- Barker, H. W., J. N. S. Cole, J. Li, B. Yi, and P. Yang, 2015a: Estimation of Errors for Two-Stream Approximations of the Solar Radiative Transfer Equation for Cloudy Atmospheres. *J. Atmos. Sci.*, **72**, 4053-4074.
- Barker, H. W., J. N. S. Cole, C. Domenech, M. Shephard, C. Sioris, F. Tornow, and T. Wehr, 2015b: Assessing the Quality of Active-Passive Satellite Retrievals using Broadband Radiances. *Q. J. R. Meteorol. Soc.*, **141**, 1294–1305, DOI:10.1002/qj.2438.
- Barker, H.W., M. P. Jerg, T. Wehr, S. Kato, D. Donovan, and R. Hogan, 2011: A 3D Cloud Construction Algorithm for the EarthCARE satellite mission. *Q. J. R. Meteorol. Soc.*, DOI:10.1002/qj.824
- Barker, H. W., Z. Qu, S. Belair, S. Leroyer, J. A. Milbrandt, P. A. Vaillancourt, 2017: Scaling Properties of Observed and Simulated Satellite Visible Radiances. *J. Geophys. Res.*, 122, 9413– 9429, doi:10.1002/2017JD027146.

- 725 Barker, H. W., J. N. S. Cole, Z. Qu, N. Villefranque, and M. W. Shephard, [20222023](#) : Radiative closure assessment of retrieved cloud and aerosol properties for the EarthCARE mission: the ACMB-DF product. *Atmospheric Measurement Techniques*, to be submitted.
- Baum, B. A., P. Yang, A. J. Heymsfield, C. Schmitt, Y. Xie, A. Bansemmer, Y. X. Hu, and Z. Zhang, 2011: Improvements to shortwave bulk scattering and absorption models for the remote sensing of ice clouds. *J. Appl. Meteor. Clim.*, **50**, 1037-1056.
- 730 Case, K. M., 1957: Transfer problems and the reciprocity principle. *Reviews of Modern Physics*, **29**, 651-663.
- [ChýlekChylek, P., P. Damiano, and E. P. Shettle, 1992: Infrared emittance of water clouds, *J. Atmos. Sci.*, **49**, 1459–1472.](#)
- 735 Clough, S. A., M. W. Shephard, E. J. Mlawer, J. S. Delamere, M. J. Iacono, K. Cady-Pereira, S. Boukabara, and P. D. Brown, 2005: Atmospheric radiative transfer modeling: a summary of the AER codes, Short Communication, *J. Quant. Spectrosc. Radiat. Transfer*, **91**, 233-244.
- Cole, J. N. S. 2005: *Assessing the importance of Unresolved Cloud-Radiation Interactions in Atmospheric Global Climate Models Using the Multiscale Modelling Framework*. PhD thesis, The Pennsylvania State University, University Park.
- 740 Cole, Jason N. S., H. W. Barker, Z., Qu, N., Villefranque, and M. W. Shephard, 2022 : Enhanced 3D radiative transfer ACM-RT calculations and output for Cole et al., 2022 [Data set]. Zenodo. <https://doi.org/10.5281/zenodo.7272662>
- [Cotton, W. R. and N. R. Gokhale, 1967: Collision, coalescence and breakup of large water drops in a vertical wind tunnel. *J. Geophys. Res.* **72**, 4041–4049.](#)
- 745 Cox C. and W. Munk, 1956: Slopes of the sea surface deduced from photographs of the sun glitter. *Bull Scripps Inst Oceanog*, **6**, 401–488.
- Diner, D. J. and J. V. Martonchik, 1984: Atmospheric transfer of radiation above an inhomogeneous non-Lambertian ground: 1 – Theory. *J. Quant. Spectrosc. Radiat. Trans.*, **31**, 97–125.
- 750 Donovan, D., G.-J., van Zadelhoff, and P. Wang [20222023](#): The ATLID L2a profile processor (A-AER, A-EBD, A-TC and A-ICE products). *Atmospheric Measurement Techniques*, to be submitted.
- Donovan, D., P. Kollias, and G.-J. van Zadelhoff, [20222023](#): The Generation of EarthCARE L1 Test Data sets Using Atmospheric Model Data Sets. *Atmospheric Measurement Techniques*, to be submitted.
- 755 Ellingson, R. G. and E. E. Takara, 2005: Longwave Radiative Transfer in Inhomogeneous Cloud Layers. Pg 487 - 519 in *Three-dimensional Cloud Structure and Radiative Transfer*. Eds. A. Marshak and A., Davis. Springer-Verlag, 686pp.
- Eisinger, M., T. Wehr, T., Kubota, D., Bernaerts, and K. Wallace, [20222023](#): The EarthCARE production model and auxiliary products. *Atmospheric Measurement Techniques*, to be submitted.
- [ESA., 2001: *The Five Candidate Earth Explorer Missions: EarthCARE –Earth Clouds, Aerosols and Radiation Explorer*, ESA SP-1257\(1\), September 2001. ESA Publications Division: Noordwijk, The Netherlands.](#)

- 760 Fauchez, T., A. Davis, C. Cornet, F. Szczap, S. Platnick, et al., 2017: A fast hybrid (3-D/1-D) model for thermal radiative transfer in cirrus via successive orders of scattering. *J. Geophys. Res.*, 122 (1), 344-366. 10.1002/2016JD025607.
- Friedman, D., 1969: Infrared characteristics of ocean water. *Appl. Opt.*, **8**, 2073-2078.
- 765 Goody, R. M., R. West, L. Chen, and D. Crisp, 1989: The correlated k-distribution method for radiation calculation in nonhomogeneous atmospheres. *J. Quant. Spectrosc. Radiat. Transfer*, **42**, 539–550, doi:10.1016/0022-4073(89)90044-7.
- Hale, G. M. and M. R. Querry, 1973: Optical constants of water in the 200nm to 200 μ m wavelength region. *Appl. Opt.*, **12**, 555-563.
- 770 Hansen, J., G. Russell, D. Rind, P. Stone, A. Lacis, S. Lebedeff, R. Ruedy, and L. Travis, 1983: Efficient three-dimensional global models for climate studies: models i and ii. *Mon. Wea. Rev.*, **111**, 609–662.
- Henye, L. G., and J. L. Greenstein, 1941: Diffuse light in the galaxy. *Astro. Phys. J.*, **93**, 70.
- Hogan, R. J., S. A. K. Schäfer, C. Klinger, J.-C. Chiu, and B. Mayer, 2016: Representing 3D cloud-radiation effects in two-stream schemes: 2. Matrix formulation and broadband evaluation. *J. Geophys. Res. Atmos.*, **121**, 8583–8599, <https://doi.org/10.1002/2016JD024875>.
- 775 Hogan, R. J., M. D. Fielding, H. W. Barker, N. Villefranque, and S. A. K. Schafer, 2019: Entrapment: An important mechanism to explain the shortwave 3D radiative effect of clouds. *J. Atmos. Sci.*, **76**, 2123-2141.
- Hu Y. X., and Stamnes, 1993: An accurate parameterization of the radiative properties of water clouds suitable for use in climate models. *J. Climate*, **6**, 728-742.
- 780 Huang, X., Chen, X., Zhou, D. K., & Liu, X.: An observationally based global band-by-band surface emissivity dataset for climate and weather simulations. *J. Atmos. Sci.*, **73(9)**, 3541– 3555. <https://doi.org/10.1175/jas-d-15-0355.1>, 2016.
- Hünerbein, A., S. Bley, H. Deneke, J. F., Meirink, G.-J., van Zadelhoff, and A. Walther, [20222023](#): Cloud optical and physical property retrievals from the EarthCARE multi-spectral imager: the M-COP product. *Atmospheric Measurement Techniques*, to be submitted.
- 785 Iacono, M. J., J. S. Delamere, E. J. Mlawer, and S. A. Clough, 2003: Evaluation of upper tropospheric water vapor in the NCAR Community Climate Model, CCM3, using modeled and observed HIRS radiances. *J. Geophys. Res.*, **108**, 4037, doi:10.1029/2002JD002539.
- 790 Iacono, M. J., J. S. Delamere, E. J. Mlawer, M. W. Shephard, S. A. Clough, and W. D. Collins, 2008: Radiative forcing by long-lived greenhouse gases: Calculations with the AER radiative transfer models, *J. Geophys. Res.*, **113**, D13103, doi:10.1029/2008JD009944.
- Illingworth, A. + others, 2015: THE EARTHCARE SATELLITE: The next step forward in global measurements of clouds, aerosols, precipitation and radiation. *Bull. Am. Met. Soc.*, **96**, 1311-1332. DOI:10.1175/BAMS-D-12-00227.1.
- 795 Irbah, A., J. Delanoe, G.-J., Zadelhoff, D., Donovan, P., Kollias, A., Tatarevic, B. P., Treserras, S., Mason, S., and Hogan [20222023](#): The classification of atmospheric hydrometeors and aerosols from EarthCare radar and lidar: the A-TC, C-TC and AC-TC products. *Atmospheric Measurement Techniques*, to be submitted.
- Iwabuchi, H., 2006: Efficient Monte Carlo methods for radiative transfer modeling. *J. Atmos. Sci.*, **63**, 2324-2339.

- 800 Kato, S., N. G. Loeb, F. G. Rose, D. R. Doelling, D. A. Rutan, T. E. Caldwell, L. Yu, and R. A. Weller, 2013: Surface irradiances consistent with CERES-derived top-of-atmosphere shortwave and longwave irradiances. *J. Clim.*, **26**, 2719–2740.
- Lacis, A. A., and V. Oinas, 1991: A description of the correlated k-distribution method for modeling nongray gaseous absorption, thermal emission, and multiple scattering in vertically inhomogeneous atmospheres. *J. Geophys. Res.*, **96**, 9027–9074, doi:10.1029/90JD01945.
- 805 L'Ecuyer, T., N. Wood, T. Haladay, G. L. Stephens, and P. W. Stackhouse, 2008: Impact of clouds on atmospheric heating based on the R04 CloudSat fluxes and heating rates dataset. *J. Geophys. Res.*, **113**:D00A15. doi:10.1029/2008JD009951.
- Li, J. and V. Ramaswamy, 1996: Four-Stream Spherical Harmonic Expansion Approximation for Solar Radiative Transfer. *J. Atmos. Sci.*, **53**, 1174–1186.
- 810 Loeb, N. G., S. Kato, and B. A. Wielicki, 2002: Defining Top-of-the-Atmosphere Flux Reference Level for Earth Radiation Budget Studies. *J. Climate*, **15**, 3301-3309.
- Marchuk, G. I., G. A. Mikhailov, M. A. Nazaraliev, R. A. Darbinjan, B. A. Kargin, and B. S. Elepov, 1980: *Monte Carlo Methods in Atmospheric Optics*. Optical Science Series, 12, Springer Verlag, 208 pp.
- Marshall, J. S. and W. M. Palmer, 1948: The distribution of raindrops with size. *J. of Meteor.*, **5** (4), 165–166.
- 815 Mason, S., R. J. Hogan, A., Bozzo, and N. Pounder, ~~2022~~2023: A unified synergistic retrieval of clouds, aerosols and precipitation from EarthCARE: the ACM-CAP product, ~~2022~~: EGUsphere [preprint], <https://doi.org/10.5194/egusphere-2022-1195>. *Atmospheric Measurement Techniques*, to be submitted.
- Mason, S., R. J. Hogan, D., Donovan, G.-J., van Zadelhoff, P., Kollias, B. P., Treserras, and Z., Qu, ~~2022~~2023a: An intercomparison of EarthCARE cloud, aerosol and precipitation retrieval products. *Atmospheric Measurement Techniques*, to be submitted.
- 820 Masuda, K., T. Takashima, and Y. Takayama, 1988: Emissivity of pure and sea waters for the model sea surface in the infrared window regions. *Rem. Sens. Env.*, **24**, 313-329
- Milbrandt, J. A., S. Bélair, M. Faucher, M. Vallée, M. L. Carrera, and A. Glazer, 2016: The Pan-Canadian high resolution (2.5km) deterministic prediction system. *Weather and Forecasting*, **31**, 1791-1816.
- 825 Mlawer, E. J., S. J. Taubman, P. D. Brown, M. J. Iacono, and S. A. Clough, 1997: Radiative transfer for inhomogeneous atmospheres: RRTM, a validated correlated-k model for the longwave. *J. Geophys. Res.*, **102**, 16 663–16 682, doi:10.1029/97JD00237.
- Mlawer, E. J., and S. A. Clough, 1998: Shortwave and longwave enhancements in the rapid radiative transfer model. Proc. Seventh Atmospheric Radiation Measurement (ARM) Science Team Meeting, San Antonio, TX, U.S. Dept. of Energy, 409–413. [Available online at https://www.arm.gov/publications/proceedings/conf07/extended_abs/mlawer_ej.pdf.]
- 830 Modest, M. F., 2003: Backward Monte Carlo simulations in radiative heat transfer. *ASME Journal of Heat Transfer*, **125**, 57-62.
- Morcrette, J.-J., H.W. Barker, J.N.S. Cole, M.J. Iacono, and R. Pincus, 2008: Impact of a new radiation package, McRad, in the ECMWF Integrated Forecasting System. *Mon. Wea. Rev.*, **136**, 4773–4798.

- 835 Mroz, K., B. P. Treserras, A., Battaglia, ~~and~~ P. Kollias, ~~A. Tatarevic, and F. Tridon, 2022~~2023 : Cloud and Precipitation Microphysical Retrievals from the EarthCARE Cloud Profiling Radar: the C-CLD product, EGUsphere [preprint], <https://doi.org/10.5194/egusphere-2023-56>. The EarthCARE Cloud Profiling Radar (CPR) L2a Cloud and Precipitation Microphysics Processor (C-CLD). *Atmospheric Measurement Techniques*, to be submitted.
- Oreopoulos, L., and Coauthors, 2012: The continual intercomparison of radiation codes: Results from Phase I. *J. Geophys. Res.*, **117**, D06118, doi:10.1029/2011JD016821.
- 840 Qu, Z., D. P. Donovan, H. W., Barker, J. N. S., Cole, and M. ~~W.~~ Shephard, ~~and V. Huijnen, M.~~ 20222023: Numerical model generation of test frames for pre-launch studies of EarthCARE's retrieval algorithms and data management system. *Atmos. Meas. Tech. Discuss.* [preprint], <https://doi.org/10.5194/amt-2022-300>, in review.*Atmospheric Measurement Techniques*, to be submitted.
- 845 Rahman, H., Pinty, B. and Verstraete, M.M., 1993, Coupled surface-atmosphere reflectance (CSAR) model 2. Semiempirical surface model usable with NOAA Advanced Very High Resolution Radiometer data. *J. Geophys. Res.*, **98**, 20,791–20,801.
- Schaaf, C. B., F. Gao, A. H. Strahler, W. Lucht, X. Li, T. Tsang, N. C. Strugnell, X. Zhang, Y. Jin, J.-P. Muller, P. Lewis, M. Barnsley, P. Hobson, M. Disney, G. Roberts, M. Dunderdale, C. Doll, R. d'Entremont, B. Hu, S. Liang, and J. L. Privette, 2002: First Operational BRDF, Albedo and Nadir Reflectance Products from MODIS, *Remote Sens. Environ.*, **83**, 135-148.
- 850
- Segelstein, D., 1981: "The Complex Refractive Index of Water", M.S. Thesis, University of Missouri--Kansas City.
- Shephard M. W., S. A. Clough, V. H. Payne, W. L. Smith, S. Kireev, and K. E. Cady-Pereira, 2009: Performance of the line-by-line radiative transfer model (LBLRTM) for temperature and species retrievals: IASI case studies from JAIVEx. *Atmos. Chem. Phys.*, **9**, 7397-7417.
- 855
- Stephens, G.L., Vane, D.G., Boain, R.J., Mace, G.G., Sassen, K., Wang, Z., Ilingworth, A.J., O'Connor, E.J., Rossow, W.B., Durden, S.L., Miller, S.D., Austin, R.T., Benedetti, A., Mitrescu, C., and the CloudSat Science Team., 2002: The CloudSat mission and the A-Train: A new dimension of space-based observations of clouds and precipitation. *Bull. Amer. Meteor. Soc.*, **83**, 1771–1790, <https://doi.org/10.1175/BAMS-83-12-1771>.
- 860 Ulbrich, C. W., 1983: Natural variations in the form of raindrop size distribution. *J. Clim. Appl. Met.*, **22**, 1764-1775.
- ~~Wandinger, U., A. Floutsi, H. Baars, M. Haarig, A. Hünerbein, N. Docter, D. Donovan and G. J. van Zadelhoff, 2022: HETEAC— The Hybrid End To End Aerosol Classification model for EarthCARE. *Atmospheric Measurement Techniques*, to be submitted, 2022.~~
- van Zadelhoff, G.-J., H. W., Barker, E., Baudrez, S., Bley, N., Clerbaux, J. N. S., Cole, J., de Kloe, N., Docter, C., Domenech, D. P., Donovan, J.-L. Dufresne, M., Eisinger, J., Fischer, R., García-Marañón, M., Haarig, R. J., Hogan, A., Hünerbein, P., Kollias, R., Koopman, T., Wehr, 2022: EarthCARE level-2 demonstration products from simulated scenes (09.01) [Data set]. Zenodo. <https://doi.org/10.5281/zenodo.7117116>
- 865
- Velázquez-Blázquez, A., E. Baudrez, N., Clerbaux, C., Domenech, R. G., Marañón, and N. Madenach, 20222023a.: Towards instantaneous top-of-atmosphere fluxes from EarthCARE: The BMA-FLX product. *Atmospheric Measurement Techniques*, to be submitted.
- 870
- Velázquez-Blázquez, A., E. Baudrez, N., Clerbaux, and C. Domenech, 20222023b: Unfiltering of the EarthCARE Broadband Radiometer (BBR) observations: the BM-RAD product. *Atmospheric Measurement Techniques*, to be submitted.

- 875 Villefranque, N., Fournier, R., Couvreur, F., Blanco, S., Cornet, C., Eymet, V., Forest, V., and Tregan, J.-M. (2019),
A Path-Tracing Monte Carlo Library for 3-D Radiative Transfer in Highly Resolved Cloudy Atmospheres, *J. Adv. Model. Earth Syst.*, 11, 2449– 2473. doi:<https://doi.org/10.1029/2018MS001602>.
- Walters, D. V. and R. O. Buckius, 1992: Rigorous development for radiation heat transfer in nonhomogeneous absorbing, emitting and scattering media. *Int. J. Heat Mass Transfer*, **35**, 3323-3333.
- 880 [Wandinger, U., A. A. Floutsi, H. Baars, M. Haarig, A. Ansmann, A. Hünerbein, N. Docter, D. Donovan, and G-J van Zadelhoff, S. Mason and J. Cole, 2023: HETEAC - The Hybrid End-To-End Aerosol Classification model for EarthCARE. EGUsphere \[preprint\]. <https://doi.org/10.5194/egusphere-2022-1241>. *Atmospheric Measurement Techniques*, to be submitted.](https://doi.org/10.5194/egusphere-2022-1241)
- 885 Wielicki, B. A., B. R. Barkstrom, E. F. Harrison, R. B. Lee III, G. L. Smith, and J. E. Cooper, 1996: Clouds and the Earth's Radiant Energy System (CERES): An Earth Observing System experiment. *Bull. Amer. Meteor. Soc.*, **77**, 853–868.
- Wiscombe, W. J., 1980: Improved Mie scattering algorithms. *Appl. Opt.*, 19, 1505-1509.
- Wiscombe W. J., 1977: The Delta-M Method: Rapid yet accurate radiative flux calculations for strongly asymmetric phase functions *J. Atmos. Sci.*, **34**, 1408-1422.
- 890 Wu, X. and W.L. Smith, 1997: Emissivity of rough sea surface for 8-13 μ m: model-ing and verification. *Appl. Opt.*, **36**, 2609-2619.
- Yang, P., L. Bi, B. A. Baum, K.-N. Liou, G. Kattawar, M. Mishchenko, and B. Cole, 2013: Spectrally consistent scattering, absorption, and polarization properties of atmospheric ice crystals at wavelengths from 0.2 μ m to 100 μ m. *J. Atmos. Sci.*, **70**, 330-347.