

The impacts of assimilating Aeolus horizontal line-of-sight winds on numerical predictions of Hurricane Ida (2021) and a mesoscale convective system over the Atlantic Ocean

Chengfeng Feng¹, Zhaoxia Pu¹

¹Department of Atmospheric Sciences, University of Utah, Salt Lake City, 84112, United States

Correspondence to: Zhaoxia Pu (Zhaoxia.Pu@utah.edu)

Abstract. On 22 August 2018, the European Space Agency (ESA) launched the first spaceborne wind lidar, the Aeolus satellite, measuring horizontal line-of-sight (HLOS) winds globally. The assimilation of Aeolus HLOS winds has been proven to improve numerical weather predictions (NWP). Still, its influences on forecasts of tropical cyclones (TCs) and tropical convective systems have yet to be examined in detail. This study investigates the impacts of assimilating Aeolus HLOS winds on the analysis and forecasts of Hurricane Ida (2021) and a mesoscale convective system (MCS) embedded in an African easterly wave (AEW) over the Atlantic Ocean (AO) with the mesoscale community Weather Research and Forecasting (WRF) model and the NCEP-GSI based three-dimensional ensemble-variational (3DnVAR) hybrid data assimilation (DA) system. Mie-cloudy and Rayleigh-clear winds are assimilated. The results for Ida (2021) show that assimilating Aeolus HLOS winds leads to better track predictions. The intensity forecasts are improved in some cases, even with limited coverage of Aeolus HLOS winds within the inner core region of Ida (2021). In addition, the structure of heavy precipitation associated with Ida (2021) is refined after assimilation of Aeolus HLOS winds. Further diagnosis demonstrates that the improved intensity and precipitation forecasts result from enhanced divergence in the upper level of the troposphere after assimilation of Aeolus HLOS winds. Additional results from the MCS associated with an AEW indicate that assimilating Aeolus HLOS winds enhances forecasts of its precipitation structure and the associated low-level divergence. In short, this study demonstrates the potential of assimilation of Aeolus HLOS winds to improve forecasts for TCs and tropical convective systems.

1 Introduction

Measuring three-dimensional wind profiles in the Global Observing System (GOS), especially over the oceans and remote land areas, is essential for exploring atmospheric dynamics, understanding critical issues of climate change, improving the estimation of air pollutant dispersion, and creating better initial conditions (ICs) for numerical weather predictions (NWPs; WMO, 2017; Baker et al., 2014; Pu et al., 2017; Zhang and Pu, 2010; Pu et al. 2010; Rennie et al., 2021b). Large areas of the tropical atmosphere lack measurement of wind profiles, which suggests the potential for significantly improving forecasting skills for various tropical convective systems with additional wind observations (Baker et al., 2014). To provide high spatial

and temporal near-vertical wind profiles globally, the Aeolus satellite, the first spaceborne wind lidar, was launched by the
30 European Space Agency (ESA) on 22 August 2018 (Reitebuch et al., 2020; ESA, 2022).

After successfully launching into a sun-synchronous orbit at about 320 km altitude with a weekly cycle, the Aeolus satellite
now passes the equator at 18:00 (6:00) local time (LT) during ascending (descending) orbits (Andersson et al., 2008; Krisch
et al., 2022; ESA, 2022). The azimuth angle of the Aeolus satellite closely approaches 270° (90°) for ascending (descending)
35 orbits near the equator, and the viewing angle toward the atmosphere is 35° off-nadir. The horizontal line-of-sight (HLOS)
wind component, derived from the measured wind along the laser beam line-of-sight (LOS), is approximately east-west
oriented for most of the orbits (Krisch et al., 2022).

The Atmospheric Laser Doppler INstrument (ALADIN), on board the Aeolus mission, measures Doppler-shifted backscattered
40 light scattering by atmospheric molecules and particulates with two separate interferometers: the Fizeau (Mie channel) for
large particles, cloud droplets, ice crystals, dust, and aerosols, and the Fabry-Perot (Rayleigh channel) for moving molecules,
including oxygen and nitrogen (Andersson et al., 2008; Reitebuch et al., 2009; Ingmann and Straume, 2016). Based on the
signal-to-noise ratio, four types of HLOS winds are available, including Mie-clear, Mie-cloudy, Rayleigh-clear, and Rayleigh-
cloudy (Jos de Kloe et al., 2022). Rayleigh-clear winds perform better than Rayleigh-cloudy winds due to little or no
45 contamination from Mie scattering. Mie-cloudy winds are better than Mie-clear winds because measurements from the Mie
channel require strong backscattering from aerosols, water droplets, or ice crystals (Rennie et al., 2021a). The horizontal
resolution of the Mie channel is typically about 10-15 km along the ground track and about 90 km for the Rayleigh channel.
Vertically, the sizes of 24 range bins vary from 250 m to 2 km (Krisch et al., 2022).

50 Aeolus HLOS winds have been validated with different reference observations over many regions since launching, such as
ground-based radar measurements (Zuo et al., 2022), ground-based coherent Doppler wind lidars (Wu et al., 2022), airborne
Doppler wind lidars (Witschas et al., 2020; Witschas et al., 2022), in situ Atmospheric Motion Vectors (AMVs; Rani et al.,
2022; Lukens et al., 2022), NWP equivalents (Rani et al., 2022; Martin et al., 2021), and radiosonde observations (Martin et
al., 2021; Baars et al., 2020). Validation shows that the quality of Mie-cloudy winds is better than that of Rayleigh-clear winds
55 (Zuo et al., 2022; Rani et al., 2022). Furthermore, Aeolus HLOS winds can capture atmospheric dynamic structures well, such
as the Low-Level Jet (LLJ), Tropical Easterly Jet (TEJ; Rani et al., 2022), atmospheric gravity waves (GWs; Banyard et al.,
2021). As the Aeolus products are continuously calibrated and validated, the product processor is updated and the performance
of the Aeolus Level-2B (L2B) wind product improves (Wu et al., 2022). Thus, the current Aeolus products are suitable for
data assimilation (DA) in the global forecast system (GFS; Pourret et al., 2022; Guo et al., 2021).

60 Assimilation of Aeolus HLOS winds has already been shown to improve analyses and forecasts in many global NWP models,
including the Météo-France global NWP model ARPEGE (Pourret et al., 2022), the Canadian Global Deterministic Prediction

System (GDPS; Laroche and St-James, 2022), and ECMWF's Integrated Forecasting System (IFS; Rennie et al., 2021a). Several other studies have assessed the impacts of assimilating Aeolus HLOS winds on tropical cyclones (TCs) by Observing System Experiments (OSEs). Rani et al. (2022) conducted OSEs to examine the impacts of assimilation of Aeolus HLOS winds on simulations of the location, intensity, and vertical extent of North Indian Ocean (NIO) cyclones, and the improvements due to Aeolus winds were marginal. Marinescu et al. (2022) carried out OSEs with the operational Hurricane Weather and Research Forecasting (HWRF) model to assess the impacts of assimilating Aeolus HLOS winds on forecasting TCs, and their results suggest that the most significant potential impacts from assimilation of Aeolus observations are likely to occur in the upper troposphere and lower stratosphere and within about 500 km of the TC center. The OSEs performed with the NOAA Finite-Volume Cubed-Sphere Global Forecast System (FV3GFS) suggested that assimilation of Aeolus HLOS winds can reduce track forecast error in the Eastern Pacific basin and Atlantic basin (Garrett et al., 2022). However, the potential impacts of assimilating [these so-called "Aeolus near-real-time \(NRT\)"](#) HLOS winds on simulations of TCs and tropical convective systems have not been investigated. From August to September 2021, the NASA Convective Processes Experiment - Aerosols & Winds (CPEX-AW) field campaign, in collaboration with ESA, conducted post-launch calibration and validation activities for the Aeolus satellite near St. Croix over the Atlantic Ocean (AO), marking notable TCs and other tropical convective systems observed by the Aeolus satellite. In this study, we use Hurricane Ida (2021), a major hurricane, and a mesoscale convective system (MCS) embedded in an African easterly wave (AEW) during NASA's CPEX-AW campaign to assess the impacts of assimilating Aeolus HLOS winds.

The paper is organized as follows. Section 2 introduces the mesoscale community Weather Research and Forecasting (WRF) model, the NCEP Gridpoint Statistical Interpolation (GSI)-based three-dimensional ensemble-variational (3DnVAR) hybrid DA system, the Integrated Multi-satellite Retrievals for GPM (IMERG) precipitation dataset, and the statistical evaluation metrics. Section 3 discusses the impacts of assimilating Aeolus HLOS winds on forecasts of Hurricane Ida (2021). Section 4 diagnoses the influence of [the](#) assimilation of Aeolus HLOS winds on the analysis of atmospheric conditions associated with Hurricane Ida (2021). Section 5 evaluates the influence of [the](#) assimilation of Aeolus HLOS winds on an MCS embedded in an AEW. Finally, Sect. 6 summarizes the results and assesses the need for future work.

2 WRF Model, DA system, IMERG, and statistical evaluation metrics

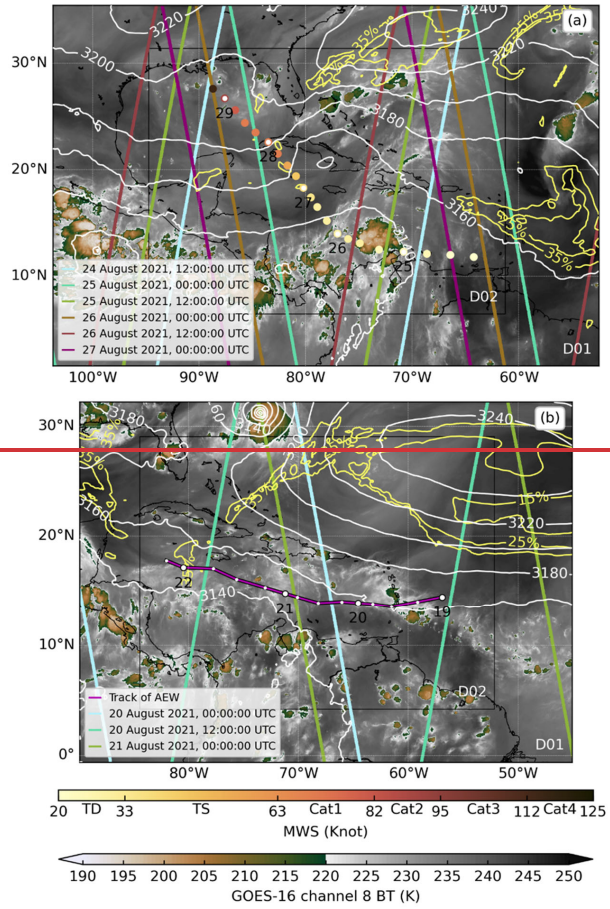
2.1 WRF Model

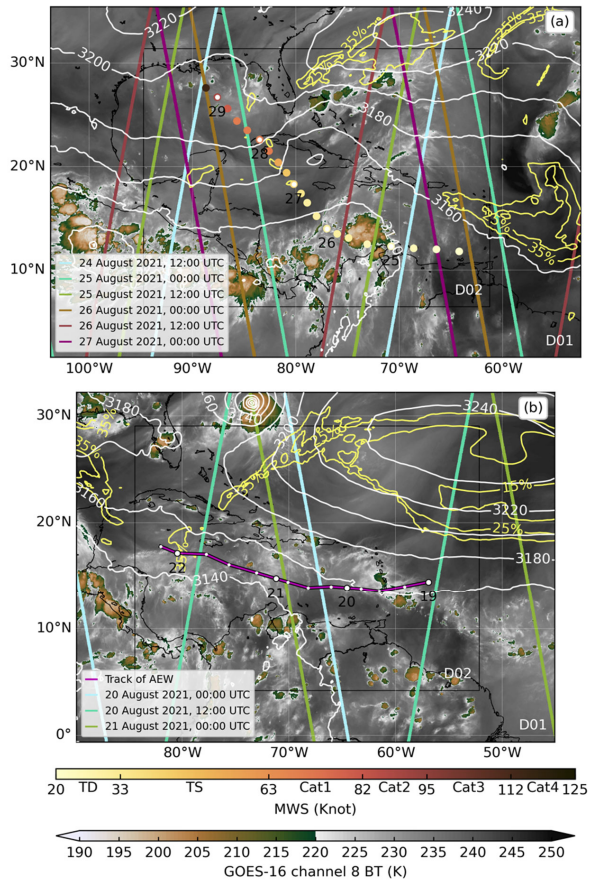
An advanced research version of WRF model (WRF-ARW) V4.4 (Skamarock et al., 2019) is applied in this study, with 61 terrain-following levels and the model top set at 10 hPa, as indicated by Table 1. Two domains are employed in all experiments. Their sizes differ in the experiments of Hurricane Ida (2021) and the MCS within an AEW, as illustrated in Fig. 1. The horizontal resolutions of the parent and inner domains are 12 and 4 km, and the time steps of the parent and inner domains are 30 and 10 s, respectively. The boundary conditions of the parent domain are obtained from the $0.25^\circ \times 0.25^\circ$ horizontal resolution NCEP GFS final analyses (FNL). Details of the parameterization scheme options are listed in Table 1.

Table 1: Configuration of the WRF-GSI cycling DA system.

Model	Resolution	12 km (domain 1, d01, or parent domain), and 4 km (domain 2, d02, or inner domain) 61 vertical levels with model top at 10 hPa
	Time steps	30 s (d01) and 10 s (d02)
	Physics	Longwave radiation: RRTM (Mlawer et al., 1997) Shortwave radiation: Dudhia (Dudhia, 1989) Microphysics: WSM6 (Hong and Lim, 2006) Cumulus: Kain-Fritsch (Activated only in the parent domain; Kain, 2004) PBL: YSU (Hong et al., 2006) Surface layer: Monin-Obukhov Similarity (Jiménez et al., 2012) Land surface: Unified Noah LSM (Tewari et al., 2004)
	Boundary condition	Spin up and cycling DA period: NCEP GFS FNL Forecast period: NCEP GFS Forecasts
Analysis	DA system	NCEP GSI-based 3DnVAR hybrid DA system V3.7
	State vector	\mathbf{u} (Zonal wind), \mathbf{v} (Meridional wind), $\mathbf{t}\mathbf{v}$ (Virtual temperature), \mathbf{q} (Specific humidity), \mathbf{prse} (Pressure), \mathbf{ps} (Surface pressure), \mathbf{sst} (Sea surface temperature)
	Control vector	\mathbf{sf} (Stream function; 0.60), \mathbf{vp}_{ub} (Unbalanced velocity potential; 0.60), \mathbf{ps}_{ub} (Unbalanced surface pressure; 0.75), \mathbf{t}_{ub} (Unbalanced temperature; 0.75), \mathbf{rh} (Normalized RH; 0.75), \mathbf{sst} (Sea surface temperature; 1.00) The numbers indicate normalized scale factors for their background error variances.
	Assimilation window	± 3 h
	Background error covariance	Static part (0.2), and flow-dependent part (0.8, estimated from 80-member 6-h ensemble forecasts from the NCEP GSI 4DnVAR system)
	Ensemble localization scale	Horizontal: 110 km Vertical: 3 grid units

Formatted Table





105 **Figure 1: Two nested domains (d01: 12 km, and d02: 4 km) in experiments 2418_L2B (a) and 1918_L2B (b). The Aeolus measurement**
swaths (colored line) are from 12 UTC 24 Aug to August 2021, 12:00 UTC to 27 Aug August 2021, 00:00 UTC (a) and from 20 August
2021, 00:00 UTC 20 Aug to 21 August 2021, 00:00 UTC 21 Aug 2021 (b). The track and maximum surface wind speeds (MWSs,
colored dot) of Hurricane Ida (2021) in (a) are adopted from the NHC best-track data, and the days are illustrated below the open
markers indicating 00:00 UTC. Two classifications (TD: tropical depression; TS: tropical storm) and different categories (Cat1:
Category 1; Cat2: Category 2; Cat3: Category 3; Cat4: Category 4) based on the Saffir-Simpson Hurricane wind scale are given
below the color bar of MWS. The AEW in (b) is tracked manually using the GFS-analyzed 700-hPa relative vorticity maxima at 700
hPa (purple line with black edges). The white dots with the numbers below along the AEW track indicate 00:00 UTC of a day. The
700-hPa geopotential height at 700 hPa (white line) and 850-hPa relative humidity at 850 hPa (RH; yellow line), obtained from GFS
analysis, are overlaid atop GOES-16 channel 8 brightness temperatures (BTs; shaded) at on 25 August 2021, 12:00 UTC 25 Aug
(a), and 21 August 2021, 00:00 UTC 21 Aug 2021 (b). Only RH less than 35% is shown in (a) and (b).

115 **2.2 NCEP GSI-based 3DEnVAR hybrid DA system**

The DA system used in this study is the NCEP GSI-based 3DEnVAR hybrid DA system V3.7, the details of which are listed in Table 1. The cost function of the GSI system has two terms: the background and observational error terms.

$$J(\mathbf{x}, \boldsymbol{\beta}) = \frac{1}{2}(\mathbf{x}_b - \mathbf{x})^T(\alpha_1 \mathbf{B}_1 + \alpha_2 \mathbf{B}_2)^{-1}(\mathbf{x}_b - \mathbf{x}) + \frac{1}{2}[\mathbf{y}_0 - H(\mathbf{x})]^T \mathbf{R}^{-1}[\mathbf{y}_0 - H(\mathbf{x})] \quad (1)$$

120

In the background error term (the first term in Eq. (1)), \mathbf{x} is the analysis, and \mathbf{x}_b is the first guess, namely a 6-h WRF model simulation. The hybrid background error covariance matrix consists of a prescribed static part \mathbf{B}_1 , and a flow-dependent part \mathbf{B}_2 . The weighting factors of these two portions are 0.2 (α_1) and 0.8 (α_2), respectively. The flow-dependent part is estimated by 80-member 6-h ensemble forecasts from the NCEP GSI 4DEnVAR system. The [default](#) homogeneous isotropic horizontal ensemble localization scale is 110 km, and the [default](#) vertical localization scale is 3 grid units (see Table 1). In the observational error term (the second term in Eq. (1)), \mathbf{y}_0 is the observation, H is the forward model, and \mathbf{R} is the observation error covariance. Thus, the innovation Observation-Minus-Background (OmB) is defined as $\mathbf{y}_0 - H(\mathbf{x})$.

125

The observations \mathbf{y}_0 in this study are the Aeolus L2B baseline 12 [near-real-timeNRT](#) HLOS winds (ESA, 2021). The quality control (QC) steps used in this study are the following:

130

1. Mie-clear and Rayleigh-cloudy products are not used in this study due to their poor quality (Rennie et al., 2021a; Pourret et al., 2022; Laroche and St-James, 2022).
2. Aeolus HLOS winds marked as invalid retrievals by the L2B processor are eliminated (Rennie et al., 2021a).
3. The GSI system rejects Mie-cloudy and Rayleigh-clear HLOS winds when their L2B estimated instrumental errors (before scaling) are over 12 and 10 m s⁻¹, respectively (Rennie et al., 2021a).
4. Aeolus HLOS winds are discarded when their absolute value is larger than 1000 m s⁻¹.
5. A gross check is adopted to remove observations with normalized OmBs (OmB normalized by σ) larger than 4σ , while σ is the standard deviation of the observation errors (similar to QC Step 6 in Pourret et al. (2022)).

135

140 The forward model $H(\mathbf{x})$ of the Mie-cloudy and Rayleigh-clear HLOS winds (Pourret et al., 2022; Laroche and St-James, 2022; Rennie et al., 2021a) is defined as:

$$H(\mathbf{x}) = -\mathbf{u} \sin \theta - \mathbf{v} \cos \theta \quad (2)$$

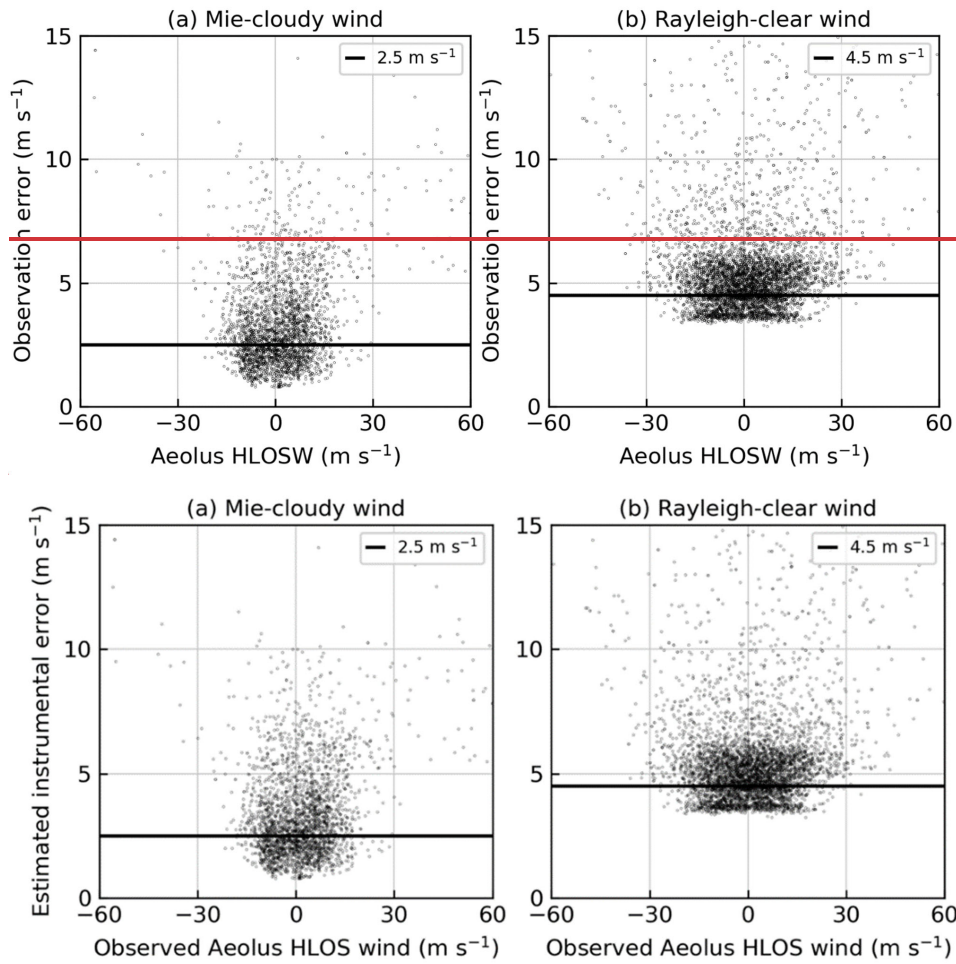
The forward model $H(\mathbf{x})$ interpolates the WRF model winds (zonal wind component \mathbf{u} and meridional wind component \mathbf{v}) according to the geolocation of the Aeolus observations and projects the interpolated model winds to the HLOS winds with

145

the horizontal azimuth angle θ . The vertical velocity is assumed to be zero in the forward model because it seems to be a second-order problem even for tropical convective systems (Rennie and Isaksen, 2020).

The observation error covariance matrix \mathbf{R} can be divided into $\mathbf{R} = \frac{1}{\Sigma^2} \mathbf{C} \Sigma^2$. \mathbf{C} is the correlation matrix. Since we assume that
150 the observations are uncorrelated in this study, \mathbf{C} is an identity matrix. Σ^2 is a diagonal matrix of the standard deviation of the
observation error σ . The observation error consists of the instrument and representation error, while the representation error
includes the observation-operator error and the error due to unresolved scales and processes (Janjić et al., 2018). Since the
representation error is unknown and the primary goal of this study is to investigate the impacts of assimilation of Aeolus HLOS
winds on Hurricane Ida (2021) and an MCS embedded in an AEW, we simply use the L2B dynamic estimated instrumental
155 errors to estimate the standard deviation of the observation error σ . Figure 2 shows scatter plots of the valid Mie-cloudy (a)
and Rayleigh-clear (b) HLOS winds against their estimated instrumental errors from 25 August 2021, 00:00:00 UTC to
2627 August 2021, 18:00:00 UTC (cycling DA period of experiment 24182500_L2B). The Mie-cloudy HLOS winds are
clustered primarily between -20 and 20 m s⁻¹, and their estimated instrumental errors lie mostly between 1 and 4 m s⁻¹.
160 Based on the statistics of the data, the standard deviation of the observation errors for the Mie-cloudy winds is ~~simply~~ assigned
to 2.5 m s⁻¹ in this study, as indicated by the black line in Fig. 2 (a). The Rayleigh-clear HLOS winds are mainly between -
30 and 30 m s⁻¹, and their estimated instrumental errors vary primarily from 3 to 6 m s⁻¹. ~~so the~~ The standard deviation of
the observation errors for the Rayleigh-clear winds is ~~simply~~ set at 4.5 m s⁻¹. ~~based on the statistics of data samples~~. The
Rayleigh-clear winds have a higher standard deviation of observation errors because the quality of the Mie-cloudy winds is
better than that of the Rayleigh-clear winds (Zuo et al., 2022; Rani et al., 2022).

165



170

Figure 2: Scatter plots (black circle) of valid **observed** Aeolus HLOS winds against their estimated instrumental errors from 25th August 2021, 06:00 UTC to 27 August 2021, 00:00 UTC (cycling DA period of experiment 24182500_L2B) for Mie-cloudy winds (a) and Rayleigh-clear winds (b). The black lines in (a) and (b) indicate the estimated **observation/instrumental** errors for the greatest population of valid **observed** Aeolus HLOS winds, which are 2.5 and 4.5 m s⁻¹, respectively. The results of experiments 2406_L2B, 2412_L2B, and 25002418_L2B are similar to those of experiment 24182500_L2B.

- Formatted: Font: 9 pt, Bold, Font color: Black
- Formatted: Font: 9 pt, Bold, Font color: Black, English (United Kingdom)
- Formatted: Font: 9 pt, Bold, Font color: Black, English (United Kingdom)
- Formatted: Normal
- Formatted: Font: 9 pt, Bold, Font color: Black, English (United Kingdom)
- Formatted: Font: 9 pt, Bold, Font color: Black, English (United Kingdom)
- Formatted: Font: 9 pt, Bold, Font color: Black, English (United Kingdom)
- Formatted: Font: 9 pt, Bold, Font color: Black, English (United Kingdom)
- Formatted: Font: 9 pt, Bold, Font color: Black, English (United Kingdom)
- Formatted: Font: 9 pt, Bold, Font color: Black, English (United Kingdom)
- Formatted: Font: 9 pt, Bold, Font color: Black, English (United Kingdom)
- Formatted: Font: Cambria Math
- Formatted: Font: 9 pt, Bold, Font color: Black
- Formatted: Font: 9 pt, Bold, Font color: Black
- Formatted: Font: 9 pt, Bold, Font color: Black
- Formatted: Font: 9 pt, Bold, Font color: Black, English (United Kingdom)
- Formatted: Font: 9 pt, Bold, Font color: Black, English (United Kingdom)
- Formatted: Font: 9 pt, Bold, Font color: Black, English (United Kingdom)
- Formatted: Font color: Black

2.3 IMERG Data

The precipitation dataset used for verifying rainfall forecasts in this study is IMERG Version 6B-Final. IMERG precipitation estimates combine various satellite passive microwave sensors related to precipitation, including the GPM constellation and microwave precipitation-calibrated geo-IR fields. IMERG precipitation estimates are half-hourly and on a $0.1^\circ \times 0.1^\circ$ grid over the globe. This dataset is available from June 2000 to the present (Huffman et al., 2019).

2.4 Statistical evaluation metrics

2.4.1 RMSE

Root-mean-square error (RMSE) can measure errors of the track, MWS, and minimum sea-level pressure (MSLP) between the forecasts and NHC best-track data. RMSE is defined as follows:

$$RMSE = \sqrt{(x - x_{ref})^2} \quad (3)$$

where x is the location, MWS, or MSLP forecast of a TC, while x_{ref} is adopted from the NHC best-track data.

2.4.2 ETS

An Equitable Threat Score (ETS) is a corrected ratio of the number of correctly predicted events to the total number of predicted or observed events. The definition of ETS is:

$$ETS = \frac{N_H - ref}{N_H + N_{FA} + N_M - ref} \quad (4)$$

where ref is the chance forecast:

$$ref = \frac{(N_H + N_{FA})(N_H + N_M)}{N_H + N_{FA} + N_H + N_M} \quad (5)$$

Other variables are computed by a contingency table (Table 2), which defines Hit (N_H), False Alarm (N_{FA}), Miss (N_M), and Correct Negative (N_{CN}).

Table 2: Contingency table

	Observation	
	Yes	No

Formatted: Centered

Formatted Table

Forecast	Yes	Hit (N_H)	False Alarm (N_{FA})
	No	Miss (N_M)	Correct Negative (N_{CN})

3 Impacts of Aeolus data on numerical simulations of Hurricane Ida (2021)

3.1 Case description and experiment design

200 Ida (2021) originated from an AEW on 14 August 2021. On 24 August 2021, the AEW moved into the Caribbean Sea, reached the area near Aruba, Bonaire, and Curaçao, and interacted with MCSs along the northern coast of South America. On 25 August 2021, 12:00:00 UTC, as shown by Fig. 1 (a), the convection, indicated by the GOES-R channel 8 ~~brightness temperatures (BTs)~~, was concentrated in the eastern area of a broad low-pressure system south of the subtropical ridge over the southwestern Caribbean Sea, which is shown by ~~700-hPa-geopotential height at 700 hPa and RH at 850-hPa-RH~~. Steered
205 by the subtropical ridge, the convective disturbance began to turn north to northwestward on 26 August 2021, as demonstrated by the track of Ida (2021) in Fig. 1 (a). A TD formed on 26 August 2021, 12:00:00 UTC, and then intensified into a TS 6 hours after cyclogenesis. Early on 27 August 2021, the first rapid intensification (RI) period occurred, and Ida (2021) strengthened into a hurricane on 27 August 2021, 18:00:00 UTC. After moving across the Isle of Youth, Ida (2021) made landfall in Cuba around 28 August 2021, 00:00:00 UTC. After passing Cuba, Ida (2021) experienced the second RI period from 28 August
210 2021, 12:00:00 UTC to 29 August 2021, 12:00:00 UTC (Beven II et al., 2022).

As shown by Table 3, 8 experiments, including experiments 2406, 2406_L2B, 2412, 2412_L2B, 2418, 2418_L2B, 2500, and 2500_L2B, are performed to investigate the impacts of assimilating Aeolus Mie-cloudy and Rayleigh-clear HLOS winds on the analysis and subsequent forecasts of Hurricane Ida (2021). ~~DA was performed for both model domains~~. Experiment 2406
215 is initialized by the NCEP GFS FNL on 24 August 2021, 06:00:00 UTC. ~~The first two digits of the experiment name indicate the day of the initial time, and the last two digits represent the hour of the initial time~~. After a 6-h spin-up, a cycling DA period from 24 August 2021, 12:00:00 UTC to 26 August 2021, 06:00:00 UTC (8 DA cycles in total) is performed in experiment 2406. ~~Only~~~~The data that were assimilated routinely into the NCEP ADP~~~~Global Data Assimilation System (GDAS), including global upper air and surface weather observations, as well as satellite data, are assimilated~~. The subsequent 48-~~hour~~ h forecasts
220 are initialized from the analysis of DA cycles 5, 6, 7, and 8. Experiment 2406_L2B is similar to experiment 2406, but it also assimilates Aeolus HLOS winds during cycling DA. The forecasts are not initialized from the analysis of DA cycles 1, 2, 3, and 4 in this study because the impacts of assimilating Aeolus HLOS winds are tiny if the number of DA cycles is not large enough.

225 Since Ida (2021) was ~~just~~ a broad low-pressure system interacting with MCSs along the northern coast of South America on 24 August 2021, the forecasts of Ida (2021) are sensitive to its ICs. Consequently, except for experiments 2406 and 2406_L2B, we carry out three more sets of experiments with different initial times: 2412 and 2412_L2B (initialized on 24 August 2021,

	25 August 2021, 00:00 UTC	27 August 2021, 00:00 UTC (3DEnVAR)	Aeolus L2B HLOS winds	48 h forecasts initialized from DA cycles 5, 6, 7, and 8
Ida	00:00 UTC	From 25 August 2021, 06:00 UTC to	NCEP GDAS data,	
	25 August 2021, 00:00 UTC	27 August 2021, 00:00 UTC (3DEnVAR)	Aeolus L2B HLOS winds	48 h forecasts initialized from DA cycles 5, 6, 7, and 8
MCS	00:00 UTC	From 20 August 2021, 00:00:00 UTC to	NCEP GDAS data,	
19 August 2021,	19 August 2021, 18:00:00 UTC	21 August 2021, 00:00:00 UTC (5 cycles3DVAR)	Aeolus L2B HLOS winds	30 h forecasts initialized from DA cycles 5
MCS	18:00:00 UTC	From 20 August 2021, 00:00:00 UTC to	NCEP GDAS data,	
19 August 2021,	19 August 2021, 18:00:00 UTC	21 August 2021, 00:00:00 UTC (5 cycles3DVAR)	NCEP GDAS data,	30 h forecasts initialized from DA cycles 5
			Aeolus L2B HLOS winds	

- Formatted: Centered
- Formatted: Centered
- Formatted: Centered
- Formatted: Centered
- Formatted: Centered
- Formatted: Centered
- Formatted: Centered
- Formatted: Font: +Body (Times New Roman), Font color: Black

3.2. Distribution of OmB and OmA

To reveal the influence of DA on initial analysis, Figure 3 shows the distribution of normalized OmB (observation minus background) and OmA (observation minus analysis) for cycling DA period of experiment 2500_L2B in both domains. Compared to observations, the analyses with DA enhanced the model fields as OmAs are smaller than the OmBs, and the OmAs are closer (relative to OmBs) to the zero line. The decreased OmAs relative to OmBs are associated with better hurricane forecasts in these experiments (see next sections).

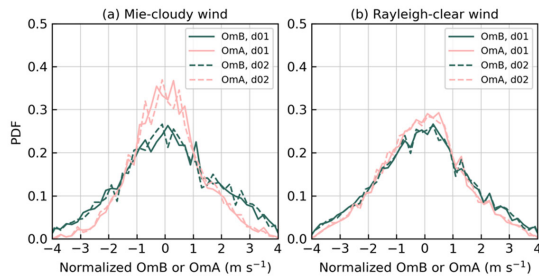
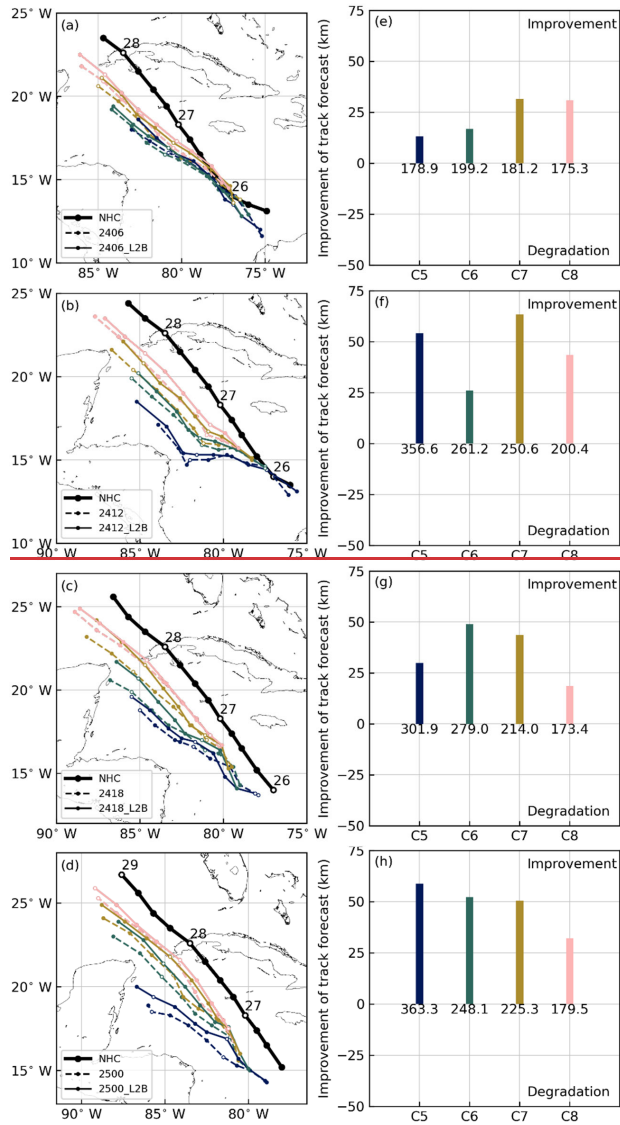


Figure 3: Probability density functions (PDFs) of normalized Observation-Minus-Background (OmB, pink) and normalized Observation-Minus-Analysis (OmA, green) in domain 1 (d01, solid line), and domain 2 (d02, dashed line) from 25 August 2021, 06:00 UTC to 27 August 2021, 00:00 UTC (cycling DA period of experiment 2500_L2B) for Mie-cloudy winds (a) and Rayleigh-clear winds (b). The PDFs are computed in 0.2 bins of normalized OmB or OmA.

3.3 Track forecasts

Figure 34 (a) compares the 48-hour track forecasts between experiments 2406 (without assimilation of Aeolus HLOS winds) and 2406_L2B (with assimilation of Aeolus HLOS winds) during the last four cycles of the cycling DA period (from 25 August 2021, 12:00:00 UTC to 26 August 2021, 06:00:00 UTC). The 48-hour track forecasts of experiment 2406 initialized from the last four DA cycles show that all track forecasts, where Ida generally moves northwestward, are southwest of the NHC best track. As shown by Fig. 34 (b), (c), and (d), the 48-hour track forecasts of experiments 2412, 2418, and 2500 (as in

experiment 2406) also have systematic biases toward the southwest of the NHC best track of Ida (2021). In addition, the track
260 forecast errors are reduced in experiments without assimilation of Aeolus HLOS winds (see the numbers in Fig. 34 (e)-(h))
when more NCEP ~~conventional~~GDAS data are assimilated, in addition to the forecasts initialized from DA cycles 5 and 6 of
experiment 2406. Compared to experiments without assimilation of Aeolus HLOS winds, the 48-hour track forecasts become
closer to the NHC best track of Ida (see Fig. 34 (a)-(d)), and the averaged track forecast errors are reduced consistently in the
experiments with assimilation of Aeolus HLOS winds, as shown by Fig. 34 (e)-(h). The reductions of the averaged track
265 forecast errors range from 10 to around 60 km after assimilation of Aeolus HLOS winds.



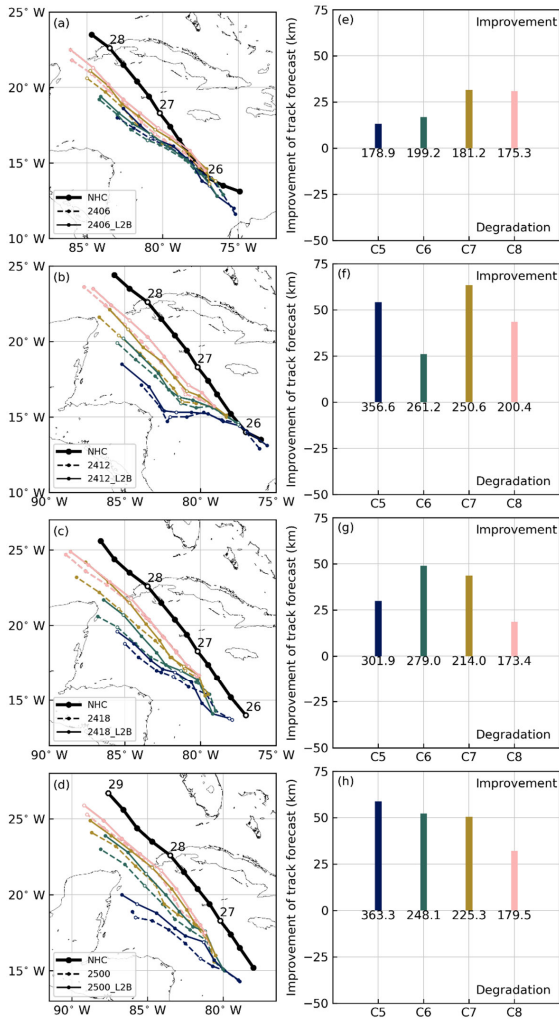


Figure 34: Comparison of 48-h track forecasts of Hurricane Ida (2021) initialized from the analysis of DA cycles 5 (blue), 6 (green), 7 (brown), and 8 (pink) between experiments 2406 (dashed lines) and 2406_L2B (solid lines) (a), 2412 and 2412_L2B (b), 2418 and 2418_L2B (c), and 2500 and 2500_L2B (d). Tracks of Ida (2021) adopted from the NHC best-track data are shown by solid black lines in (a)-(d), and the days are illustrated above the open markers indicating 00:00 UTC. The forecasts of Ida (2021) are tracked

270

275 by the GFDL vortex tracker. Compared with the experiments without assimilation of Aeolus HLOS winds, the averaged RMSE reductions of the 48-h track forecasts initialized from the analysis of DA cycles 5 (blue), 6 (green), 7 (brown), and 8 (pink) for experiments 2406_L2B, 2412_L2B, 2418_L2B, and 2500_L2B are shown in (e)-(h), respectively. The numbers indicate the averaged RMSEs of track forecasts of the reference experiments. Positive values of RMSE reductions mean improvement, while negative values indicate degradation.

3.3.4 Intensity forecasts

280 As introduced in Sect. 3a, Ida (2021) made cyclogenesis on 26 August 2021, 12:00:00 UTC and strengthened into a TS 6 hours later. Ida (2021) experienced its first RI period from 00:00:00 UTC to 18:00:00 UTC on 27 August 2021. After making landfall and passing Cuba, Ida (2021) experienced the second RI period from 28 August 2021, 12:00:00 UTC to 29 August 2021, 12:00:00 UTC. Figure 45 (a) compares the 48-hour MSLP forecasts initialized from the last four cycles (from 25 August 2021, 12:00:00 UTC to 26 August 2021, 06:00:00 UTC) between experiments 2406 (without assimilation of Aeolus HLOS winds) and 2406_L2B (with assimilation of Aeolus HLOS winds). The 48-hour MSLP forecasts of experiments 2406 and 2406_L2B capture the intensification processes well, although they cannot capture the platform between the two RI periods (from 27 August 2021, 18:00:00 UTC to 28 August 2021, 12:00:00 UTC) because their forecasts fail to predict the landfall of Ida (2021) in Cuba (see Fig. 34 (a)). Figure 45 (e) indicates a neutral impact of assimilation of Aeolus HLOS winds on the MSLP forecasts for Ida (2021), compared to experiment 2406. Figure 56 (a) and (e) compare the 48-hour MWS forecasts initialized from the last four cycles between experiments 2406 and 2406_L2B, and the conclusions are consistent with the MSLP forecasts of experiments 2406 and 2406_L2B. Similarly, the 48-h forecasts of experiments 2412 and 2412_L2B also predict the MSLP (see Fig. 45 (b)) and the MWS (see Fig. 56 (b)) well, expect for the forecasts initialized from DA cycle 5, and the impacts of assimilating Aeolus HLOS winds are neutral as well (see Fig. 45 (f)).

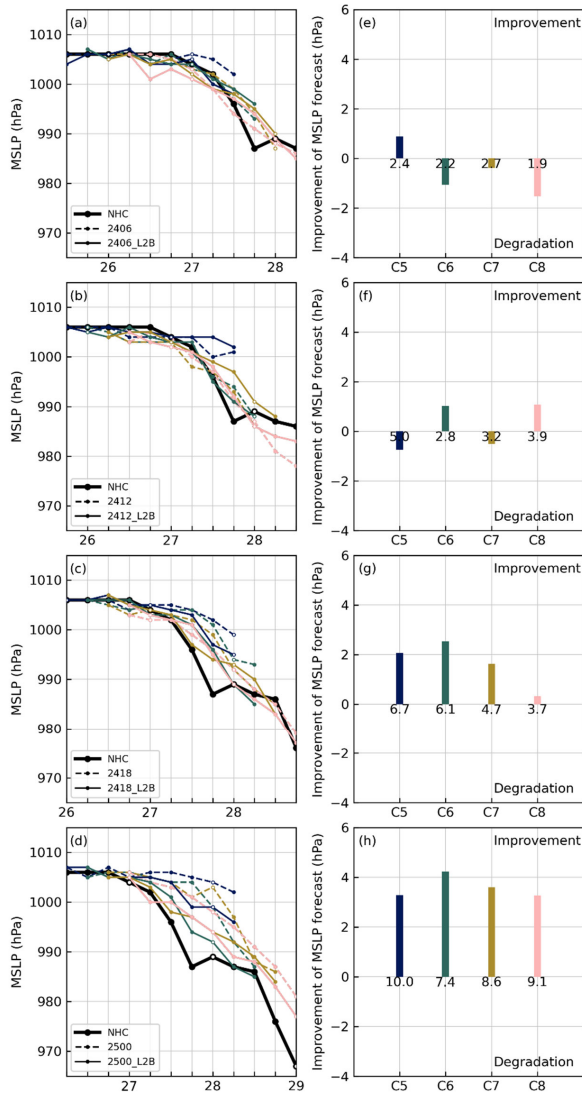
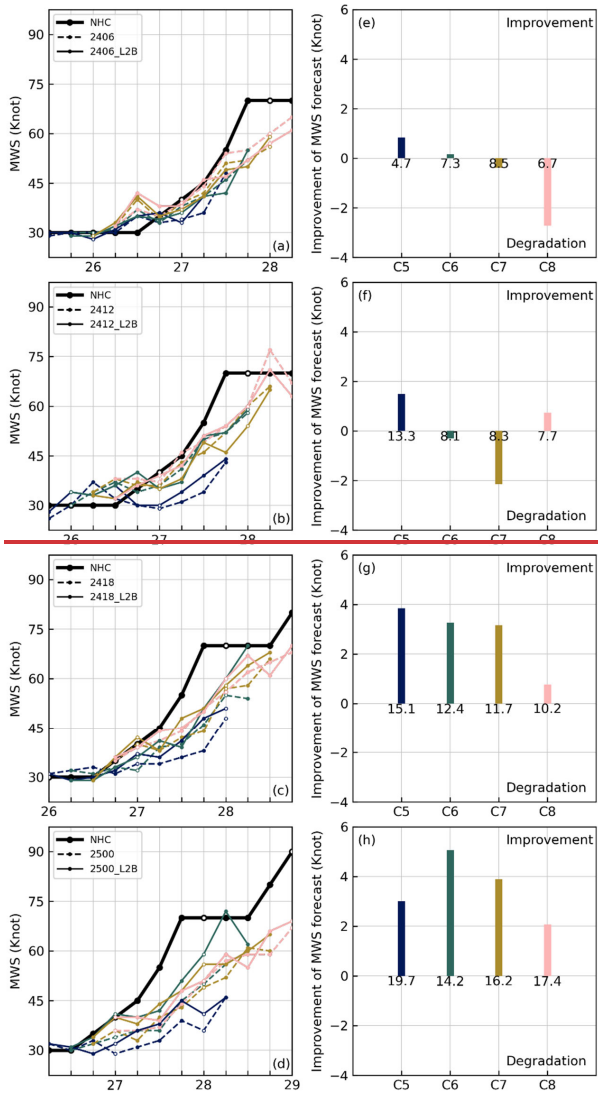
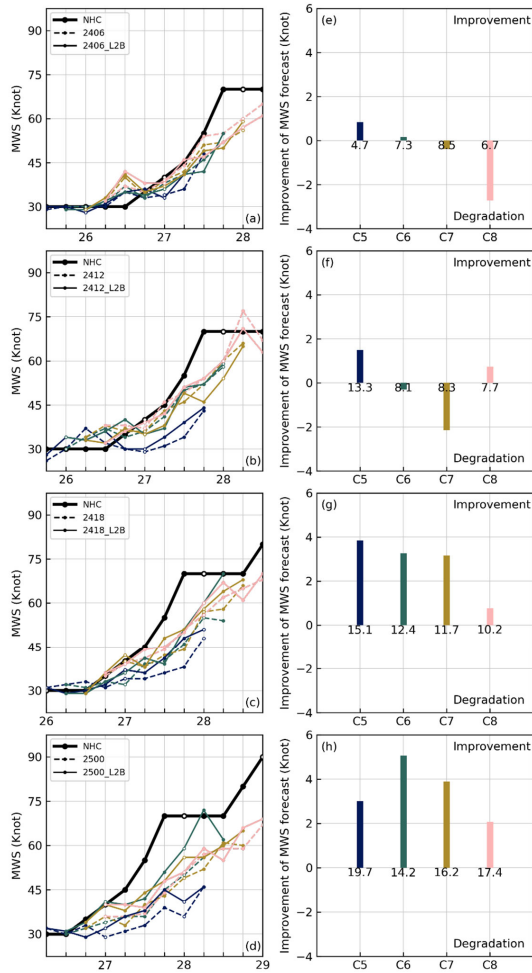


Figure 4: As in Fig. 3 Figure 5: As in Fig. 4, but for MSLP forecasts.





295

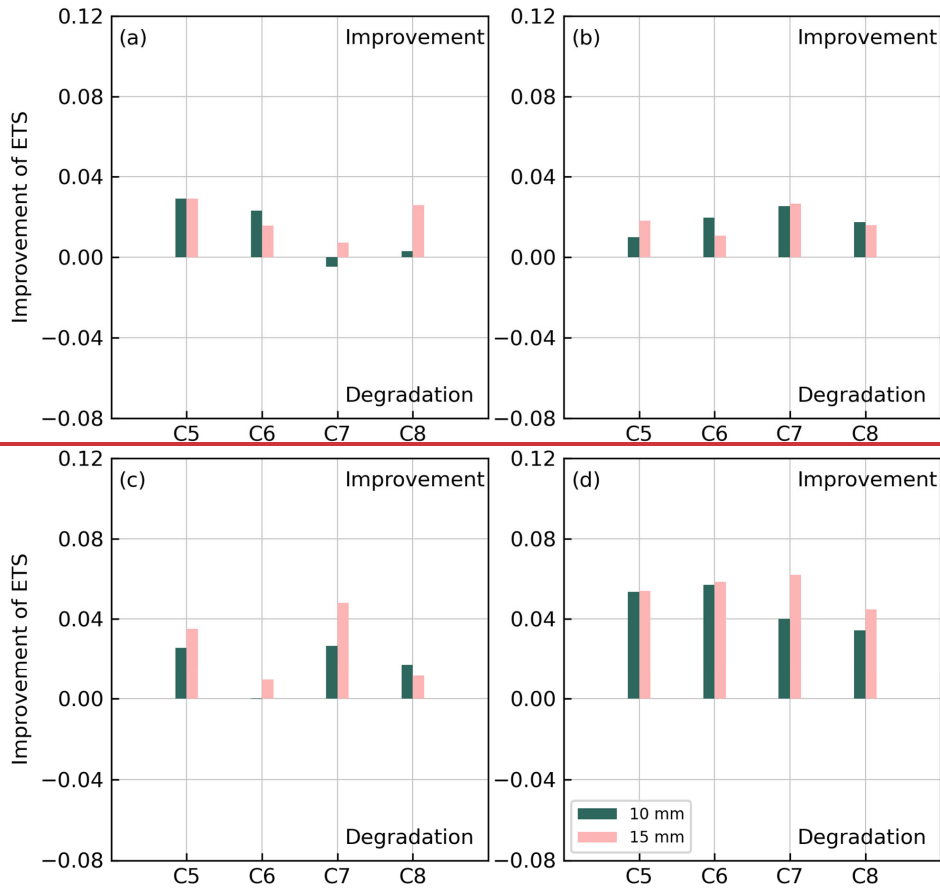
Figure 6: As in Fig. 4, but for MWS forecasts.

Nevertheless, Fig. 45 and Fig. 56 (g) and (h) indicate the positive impacts of assimilating Aeolus HLOS winds on the MSLP and MWS forecasts, compared to experiments 2418 and 2500. The averaged improvements of the MSLP forecasts are up to 4 hPa, while the averaged improvements of the MWS forecasts reach 5 Knots, after assimilation of Aeolus HLOS winds. As

300 shown by Fig. 45 and Fig. 56 (c) and (d), the 48-h MSLP and MWS forecasts of experiments 2418 and 2500 underestimate the intensity of Ida (2021) from the first to second RI period. The corresponding 48-h MSLP and MWS forecasts from experiments 2418_L2B and 2500_L2B also underestimate the intensity of Ida, but they are stronger than those of the reference experiments owing to deeper MSLPs and higher MWSs.

3.45 Precipitation forecasts

305 To evaluate the impacts of assimilating Aeolus HLOS winds on the rainfall structures of Ida (2021), we calculate ETS scores using the forecasts of 6-h accumulated precipitation against the IMERG precipitation data within a $10^\circ \times 10^\circ$ box centered on Hurricane Ida (2021). Figure 67 (a) exhibits the ~~reductions~~improvements of the 48-h averaged ETS scores of experiment 2406_L2B (with assimilation of Aeolus HLOS winds) for ~~different~~precipitation thresholds 10 and 15 mm when compared to experiment 2406 (without assimilation of Aeolus HLOS winds). The improvements of experiment 2406_L2B are evident for 15 mm precipitation thresholds, compared with experiment 2406. Positive impacts of assimilation of Aeolus HLOS winds on the 6-h accumulated precipitation forecasts for 10-~~mm~~ and 15 mm precipitation thresholds can also be found in experiments 2412_L2B, 2418_L2B, and 2500_L2B (see Fig. 7 (b)-(d)) when compared to their corresponding reference experiments. These results imply that assimilating Aeolus HLOS winds can improve simulations of the rainfall structure of strong convection for Ida (2021).



315

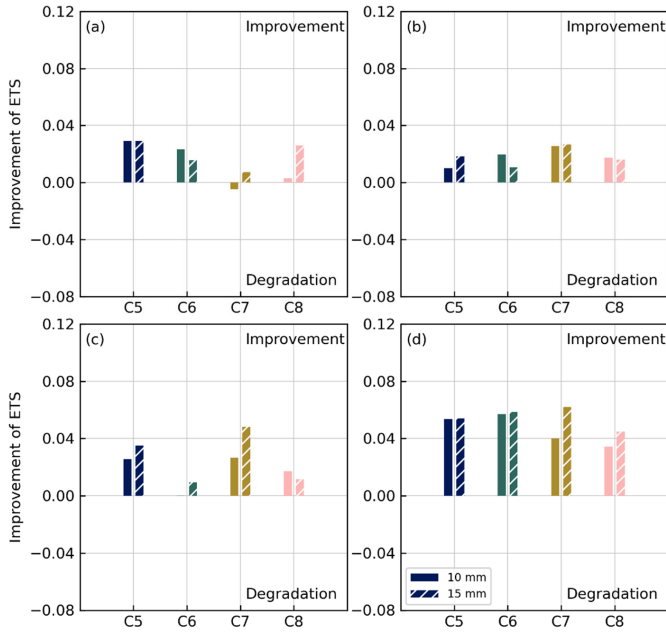


Figure 6: Reductions in Improvements of the 48-h averaged ETSs of forecasts initialized from the analysis DA cycles 5, (blue), 6, (green), 7, (brown), and 8 (pink) for different precipitation thresholds: 10 mm (green without white lines) and 15 mm (pink with white lines) in experiments 2406_L2B (a), 2412_L2B (b), 2418_L2B (c), and 2500_L2B (d), compared with the corresponding experiments without assimilation of Aeolus HLOS winds. The ETS scores are calculated using the forecasts of 6-h accumulated precipitation against the IMERG precipitation data within a $10^{\circ} \times 10^{\circ}$ box centered on Hurricane Ida (2021). Positive values of ETS score reductions mean improvement, while negative values indicate degradation.

Formatted: English (United States)

3.6 Sensitivity of Aeolus DA to horizontal and vertical localization scales

The DA results are affected by the homogeneous isotropic horizontal and vertical ensemble localization scales. In experiment 2500_L2B_H1, Ida (2021) remains a disturbance and then dissipates 12 hours after the initial time (results not shown), implying that the reduction of the horizontal localization scale to 55 km degrades the forecasts of Ida (2021). The reductions of the 48 h averaged track forecast errors, MSLP forecast errors, MWS forecast errors, and the improvements of ETSs for experiments 2500_L2B_H2, 2500_L2B_V1, and 2500_L2B_V2, compared with experiment 2500_L2B, can be found in Figure 8. Specifically, Figures 8 (e)-(h) demonstrate that reducing the vertical localization scale to 1.5 grid points also leads to the degradation of the forecasts of Ida (2021). Consequently, reducing the horizontal and vertical localization scales to half of their default values (in 2500_LB2) degraded the forecasts of Ida (2021) when compared with experiment 2500_L2B. Figures 8 (a)-(d), and (i)-(l) show that the track forecasts are improved continuously in experiments 2500_L2B_H2 and 2500_L2B_V2

when compared with experiment 2500_L2B. However, the impacts on intensity and precipitation forecasts are small and mixed. Overall, the default horizontal localization scale (110 km) and vertical localization scale (3 grid units) are the best configurations for investigating the impacts of assimilating Aeolus HLOS winds on the analysis and forecasts of Hurricane Ida (2021); thus, they are used for other experiments in this study.

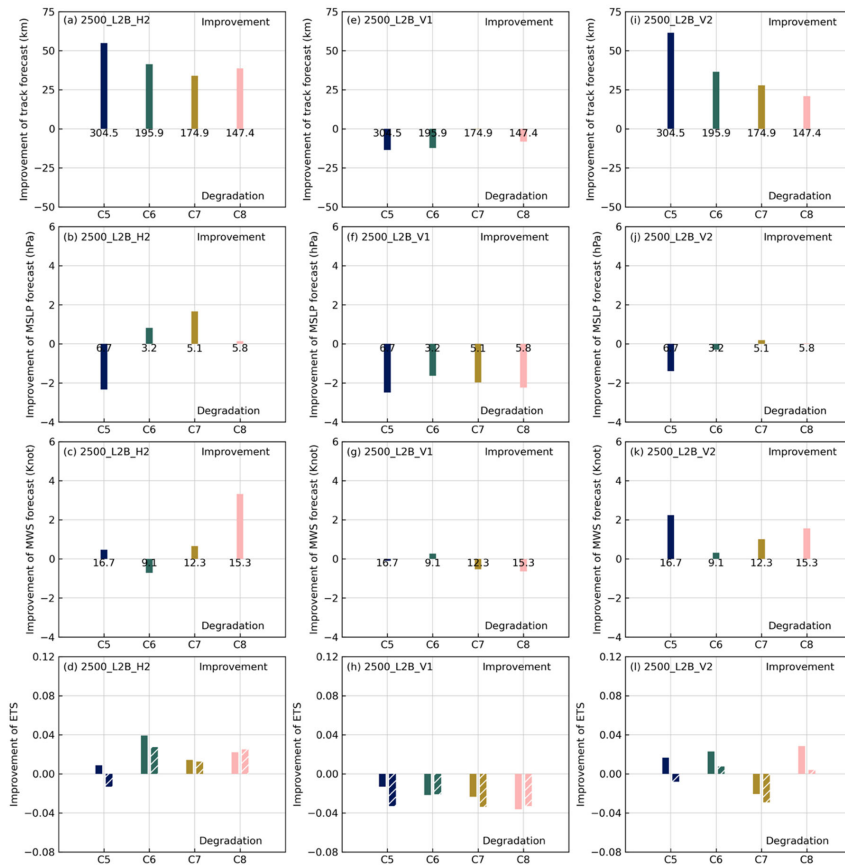
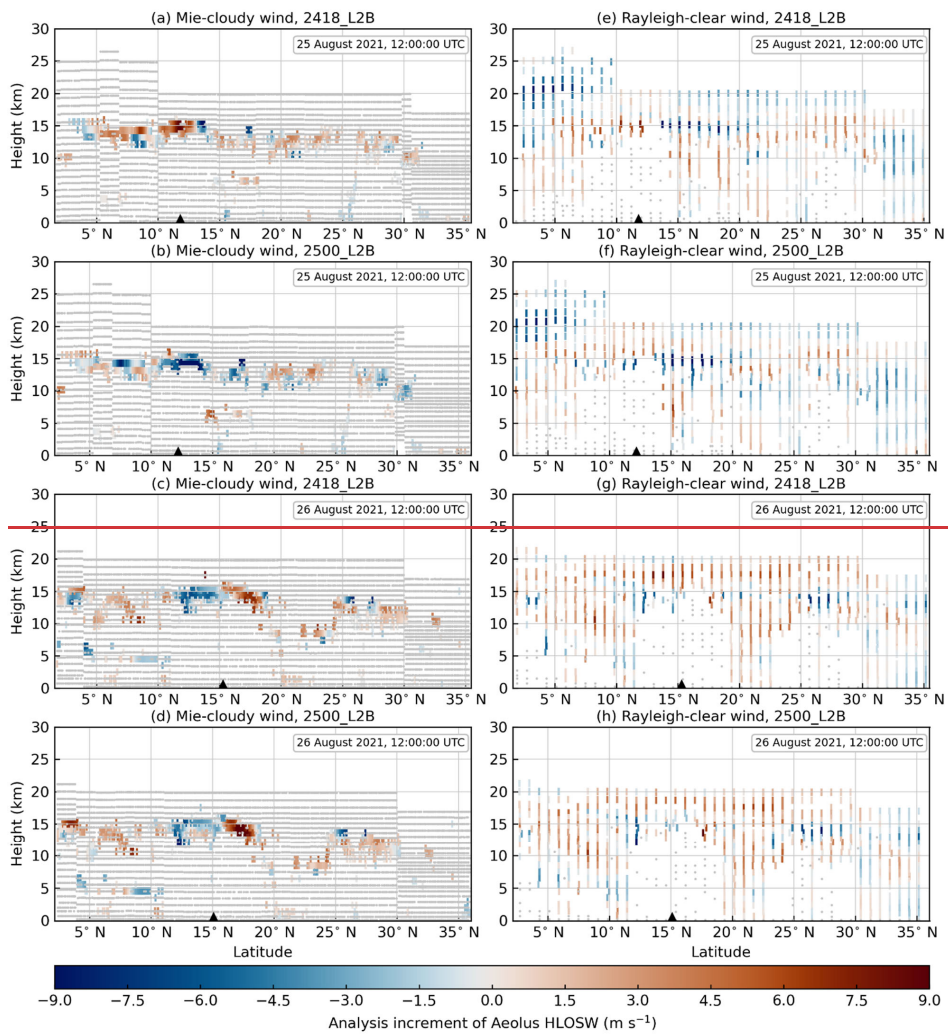


Figure 8: The reductions of the 48 h averaged track forecast errors (a), MSLP forecast errors (b), MWS forecast errors (c), and the improvements of ETSs (d) for DA cycles 5 (blue), 6 (green), 7 (brown), and 8 (pink) in experiments 2500_L2B_H2, compared with experiment 2500_L2B. Positive values of reductions of track, MSLP, and MWS forecast errors mean improvement, while negative values indicate degradation. (e)-(h), and (i)-(l) as in (a)-(d), but for experiments 2500_L2B_V1, and 2500_L2B_V2.

4 Diagnosis of influence of Aeolus DA on analysis of Hurricane Ida (2021)

4.1 Analysis increments of Aeolus HLOS winds

As mentioned in Sect. 3c, assimilating Aeolus HLOS winds leads to better intensity forecasts in experiments 2418_L2B and 2500_L2B from the first to second RI periods of Ida (2021). Thus, it is necessary to understand how assimilation of Aeolus HLOS winds influences Ida's dynamic and thermodynamic structure and then improves the intensity forecasts in experiments 2418_L2B and 2500_L2B. Commonly, improvements in a hurricane's inner core structure lead to positive impacts on hurricane intensity forecasts. Therefore, we choose experiments that assimilate Aeolus measurement swaths close to the center of Ida (2021) to examine their analysis increments over the hurricane's inner core region. As demonstrated by Fig. 1 (a), the Aeolus descending measurement swath on 25 August 2021, 12:00:00 UTC, and another on 26 August 2021, 12:00:00 UTC, are close to the center of Ida (2021) during the cycling DA period of experiments 2418_L2B and 2500_L2B and are suitable for investigating the analysis increments of Aeolus HLOS winds. Figure 79 (a) and (e) show vertical cross sections of the analysis increments of Mie-cloudy winds and Rayleigh-clear winds for the selected Aeolus measurement swath on 25 August 2021, 12:00:00 UTC in experiment 2418_L2B. Since the HLOS winds of the Mie channel are derived by the Doppler-shifted backscattered light from the Fizeau interferometer, which detects aerosols and small hydrometeors, the analysis increments of Mie-cloudy winds are located primarily near the cloud top (between 10 and 16 km), as revealed by Fig. 79 (a). The analysis increments of Mie-cloudy winds are mostly positive near the center of Ida (2021). Figure 79 (b) shows that the Rayleigh-clear winds, whose range bin thickness is 750 m between 12 and 15 km, are measured from the surface up to over 20 km in the tropical region (0 – 30° N). In comparison, the maximum measurement height in the extratropical region (30 – 60° N) is approximately 17.5 km, and the vertical resolution between 5 and 10 km (500 m) is higher due to the detection of the jet stream (ESA, 2020). However, ALADIN is totally attenuated by optically thick clouds or aerosols, so there are no Rayleigh-clear winds under the cloud top near the center of Ida (2021). The resolution of the Mie-cloudy winds is much finer than that of the Rayleigh-clear winds, but the Rayleigh-clear winds have more extensive coverage. The analysis increments of Rayleigh-clear winds are roughly consistent with those of Mie-cloudy winds where they overlap. Figure 79 (b)-(d) and (f)-(h) are similar to Fig. 79 (a) and (e), respectively, but for different experiments or times. Note that the analysis increments of Mie-cloudy winds are mainly negative near the center of Ida (2021) on 25 August 2021, 12:00:00 UTC in experiment 2500_L2B.



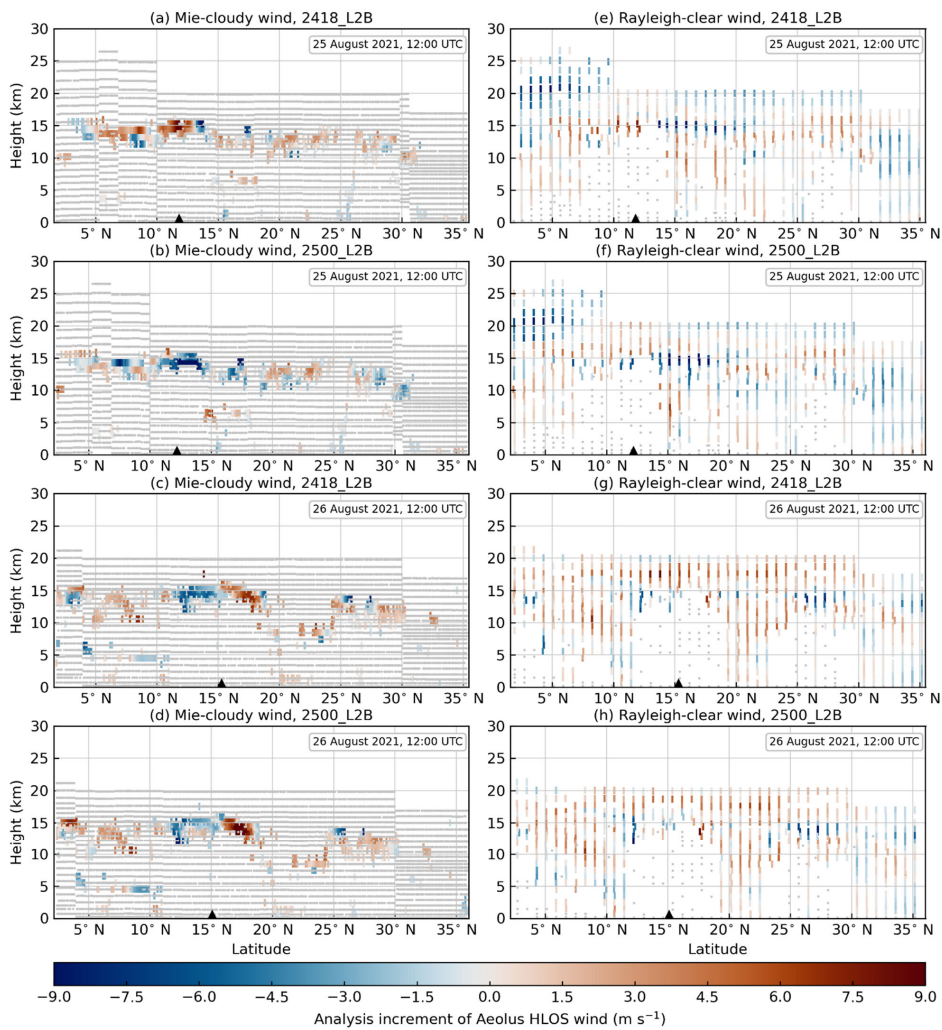


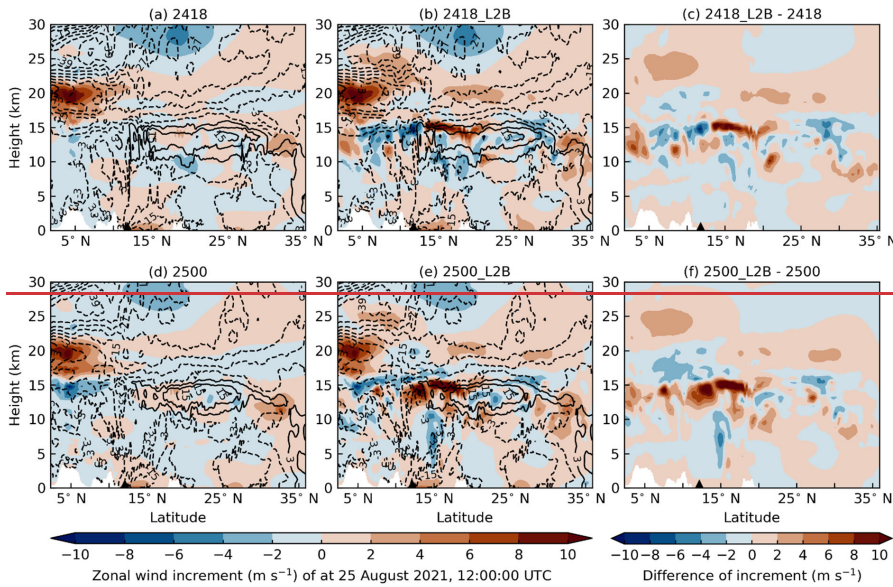
Figure 79: Vertical cross sections of analysis increments of Mie-cloudy winds for the Aeolus descending measurement swath close to the center of Ida (2021) in experiments 2418_L2B (a) and 2500_L2B (b) on 25 August 2021, 12:00:00 UTC. The triangles indicate the locations of Ida (2021) in the simulations on 25 August 2021, 12:00:00 UTC. (c)-(d) As in (a)-(b) but for 26 August 2021, 12:00:00 UTC. (e)-(h) As in (a)-(d), but for Rayleigh-clear winds.

370

4.2 Vertical cross-section of analysis increments of zonal winds and RH

The Aeolus HLOS winds are perpendicular to the Aeolus orbit, about 10 degrees off the zonal direction (Krisch et al., 2022).

375 Thus, assimilating Aeolus HLOS winds generally impact the zonal wind component more than the meridional wind component. Figure 810 (c) compares vertical cross sections of zonal wind increments along the selected Aeolus descending measurement swath on 25 August 2021, 12:00:00 UTC, between experiments 2418 and 2418_L2B. The significant impacts of assimilating Aeolus HLOS winds on the analysis increments of zonal winds are located at the upper troposphere (near the cloud top), especially near the center of Ida (2021), which is consistent with Marinescu et al. (2022), and Garrett et al. (2022).
 380 As shown by Fig. 810 (c), the difference in the analysis increments of the zonal winds is negative at the cloud tops near the center of Ida (2021) due to the positive analysis increments of Mie-cloudy and Rayleigh-clear winds (descending orbit). Figure 810 (f) is similar to Fig. 810 (c), but for experiments initialized on 25 August 2021, 00:00:00 UTC. Figure 810 (f) demonstrates that the difference in the zonal wind increments is primarily positive at the cloud tops near the center of Ida (2021), owing to the negative analysis increments of Mie-cloudy and Rayleigh-clear winds. Figure 911 examines vertical cross sections of analysis increments of RH along the selected Aeolus descending measurement swath on 25 August 2021, 12:00:00 UTC, for experiments initialized on 24 August 2021, 18:00:00 UTC, and 25 August 2021, 00:00:00 UTC. As with the zonal wind increments, the impacts of assimilating Aeolus HLOS winds on RH increments are also located primarily in the upper troposphere (between 10 and 15 km).



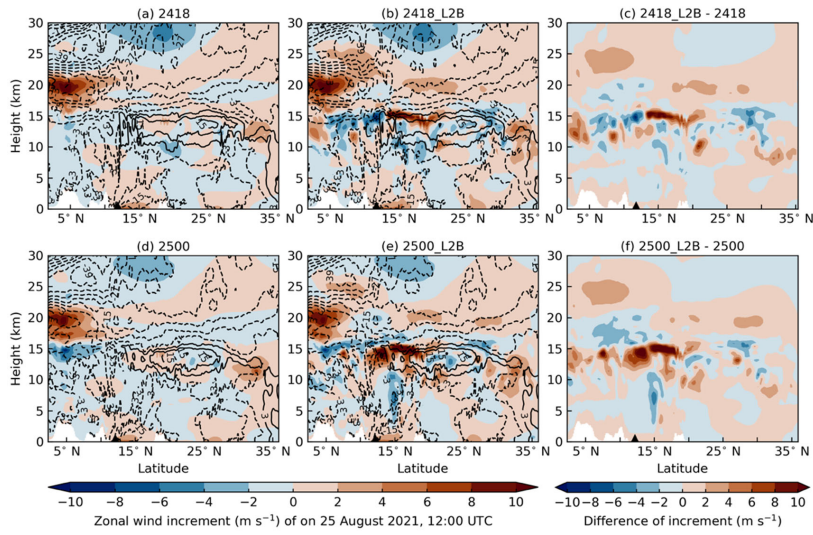
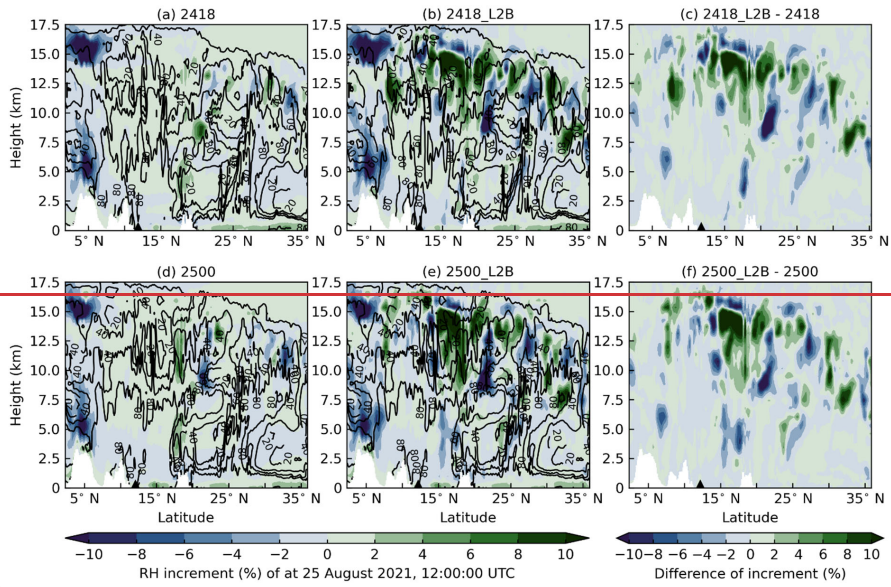


Figure 810: Vertical cross section of zonal wind increments along the Aeolus descending measurement swath close to the center of Ida (2021) on 25 August 2021, 12:00:00 UTC in experiments 2418 (a) and 2418_L2B (b). (c) shows the differences in the zonal wind increments between experiments 2418_L2B and 2418. The triangles indicate the locations of Ida (2021) in the simulations. (d)-(f) As in (a)-(c), but for experiments initialized on 25 August 2021, 00:00:00 UTC.

390



395

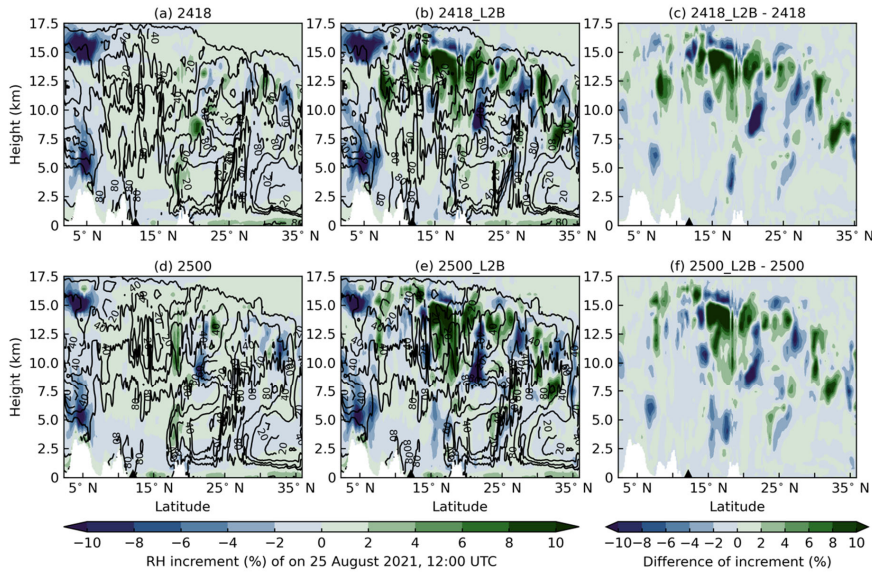
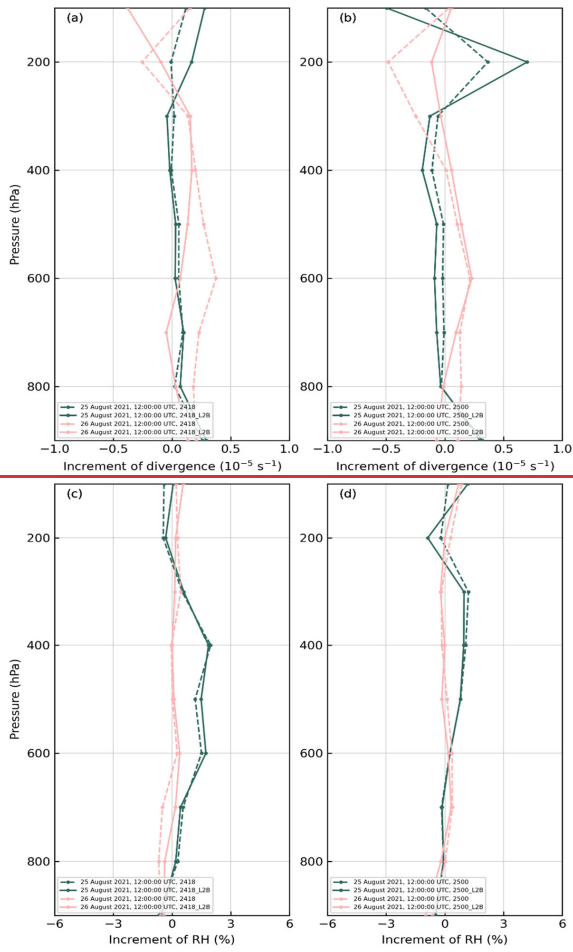


Figure 911: As in Fig. 810, but for RH.

4.3 Vertical profiles of averaged analysis increments of divergence and RH

To further investigate the impacts of assimilating Aeolus HLOS winds on the dynamic and thermodynamic structure of Hurricane Ida (2021), we calculate the averaged analysis increments of divergence and RH within a 300 km radius of the center of Ida (2021). Figure 402 (a) shows that after assimilation of Aeolus HLOS winds on 25 August 2021, 12:00:00 UTC, the analysis increments of divergence slightly increase in the upper level of the troposphere (near 200 hPa), which may help the intensification processes of Ida (2021). The differences in the analysis increments of divergence are tiny in the middle and lower troposphere between experiments 2418 and 2418_L2B because the major impacts of assimilation of Aeolus HLOS winds are located at the cloud top near the center of Ida, as mentioned in Sect. 3f. On 26 August 2021, 12:00:00 UTC, the analysis increments of divergence decrease in the lower and middle troposphere (below 400 hPa), which may be caused by assimilation of NCEP conventional observations/GDAS data and different center locations of Ida (2021) in experiments 2418 and 2418_L2B. Figure 402 (b) demonstrates that the analysis increments of divergence near 200 hPa become stronger on 25 August 2021, 12:00:00 UTC, and the analysis increments of convergence in the upper troposphere become weaker on 26 August 2021, 12:00:00 UTC after assimilation of Aeolus HLOS winds. Figure 402 (c) and (d) show that assimilation of Aeolus HLOS winds has only tiny impacts on the moisture structure of Ida (2021). In short, assimilation of Aeolus HLOS

winds leads to stronger divergence in the upper level of the troposphere, which could be one reason for the improved intensity forecasts of experiments 2418_L2B and 2500_L2B.



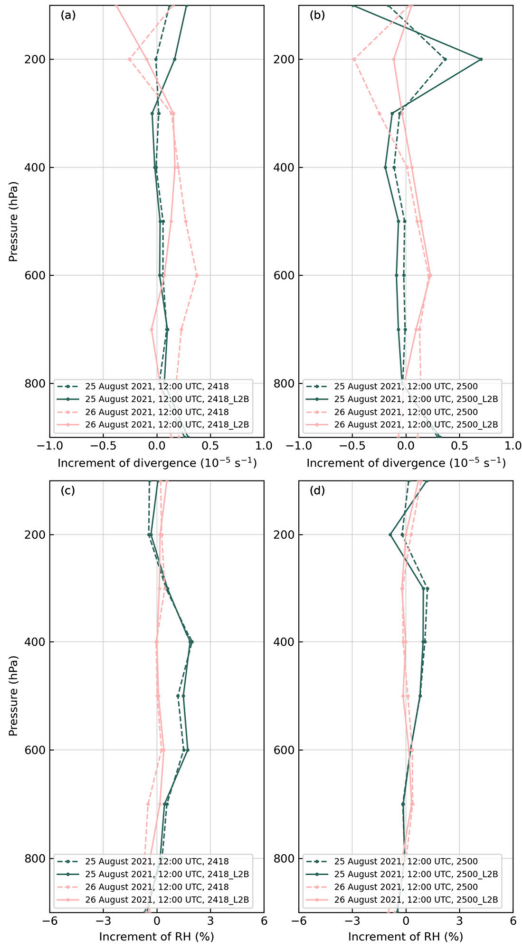


Figure 1012: Vertical profiles of averaged analysis increments of divergence (a) of experiments 2418 (dashed line) and 2418_L2B (solid line) on 25 August 2021, 12:00:00 UTC (green) and 26 August 2021, 12:00:00 UTC (pink). The analysis increments of divergence are averaged within a 300 km radius of the center of Ida (2021). (b) As in (a), but for experiments 2500 and 2500_L2B. (c)-(d) As in (a)-(b), but for averaged analysis increments of RH.

420 5 Impacts of Aeolus data on numerical simulations of an MCS associated with an AEW

5.1 Case description and experiment design

As indicated by the GOES-R channel 8 (see Fig. 1 (b)), there was a strong subtropical high over the AO on 21 August 2021, 00:00:00 UTC. TS Henri, moving northeastward, was west of the subtropical high, and MCSs could be found on the north coast of South America. As shown by the track of GFS-analyzed ~~700-hPa~~ relative vorticity maxima at 700 hPa, an AEW, 425 propagating westward on the south edge of the subtropical high, moved into the Caribbean Sea around 19 August 2021, 12:00:00 UTC. Steered by the subtropical ridge, the AEW, with scattered convection embedded inside, continued to move westward to northwestward and reached the western Caribbean Sea around 22 August 2021, 00:00:00 UTC. Experiments 1918 and 1918_L2B are carried out to assess the impacts of the assimilation of Aeolus HLOS winds on the analysis and forecasts of the MCS associated with the AEW. Experiment 1918 is initialized by the NCEP GFS FNL on 19 August 2021, 18:00:00 430 UTC, and assimilates only the NCEP ~~conventional-observations~~ GDAS data with 3DVAR during the cycling DA period from 20 August 2021, 00:00:00 UTC to 21 August 2021, 00:00:00 UTC (5 DA cycles in total). The subsequent forecast is initialized from the analysis of DA cycle 5. Experiment 1918_L2B is similar to experiment 1918 but also assimilates Aeolus HLOS winds.

5.2 Results

435 Figure 4413 shows the 6-h accumulated precipitation from 21 August 2021, 18:00:00 UTC to 22 August 2021, 00:00:00 UTC, and the ~~850-hPa~~ divergence over $5 \times 10^{-5} s^{-1}$ at 850 hPa on 22 August 2021, 00:00:00 UTC. As shown by Fig. 4413 (a), a large area of 6-h accumulated rainfall over 10 mm from the IMERG precipitation dataset is located within a 150 km radius and west of the center of the AEW. Due to the downward airflow created by the heavy rainfall, divergence over $5 \times 10^{-5} s^{-1}$ from the GFS analysis can also be found west of the center of the AEW on 22 August 2021, 00:00:00 UTC. Figure 4413 (b) 440 shows only scattered convection and rainfall-induced low-level divergence near the center of the AEW in experiment 1918. As for experiment 1918_L2B (see Fig. 4413 (c)), a large area of 6-h accumulated rainfall over 10 mm and rainfall-induced low-level divergence are located at the center of the AEW within a 150 km radius, which is more consistent with the IMERG precipitation and the low-level divergence from the GFS analysis, implying a positive impact on numerical simulations of the MCS by assimilating Aeolus HLOS winds.

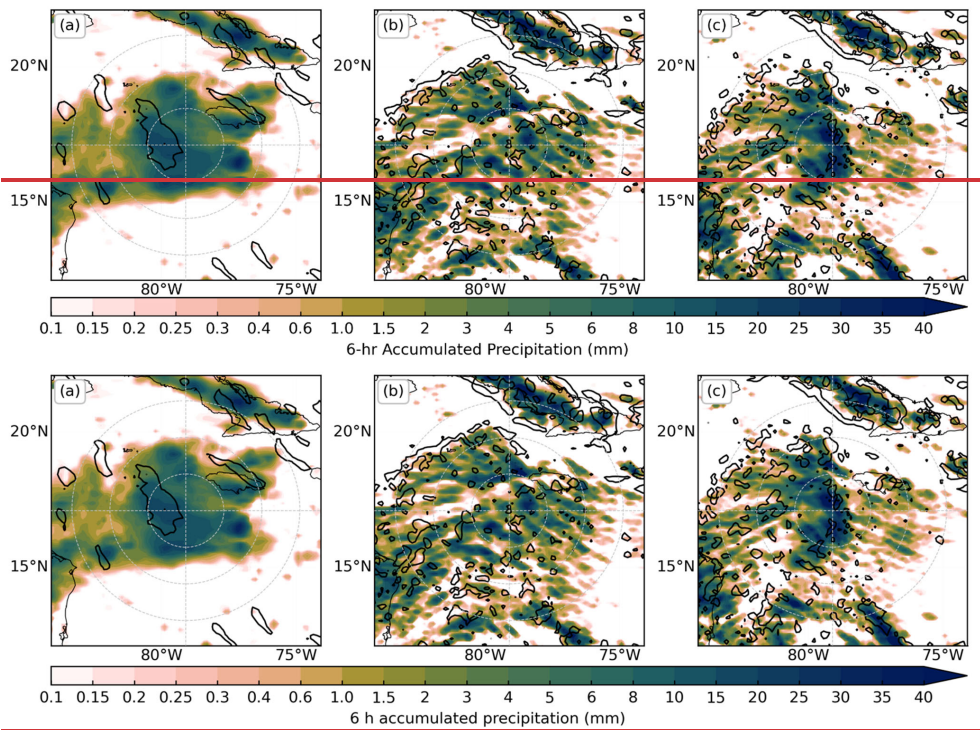


Figure H13: (a) 6-h accumulated IMERG precipitation (color shading) from 21 August 2021, 18:00:00 UTC to 22 August 2021, 00:00:00 UTC and 850-hPa divergence over $5 \times 10^{-5} \text{ s}^{-1}$ at 850 hPa (black contour) from the GFS analysis on 22 August 2021, 00:00:00 UTC. (b)-(c) As in (a), but the precipitation and divergence are calculated by the WRF model simulations of experiment 1918 (b) and experiment 1918_L2B (c). The gray circles indicate radii of 150, 300, and 450 km, respectively.

6 Conclusions

Measurement of three-dimensional wind profiles in the GOS is essential for improving the ICs of global NWP, but it is insufficient over the oceans and remote land areas (WMO, 2017; Baker et al., 2014; Pu et al., 2017; Zhang and Pu, 2010; Pu et al. 2010; Rennie et al., 2021b). To fill the gap, the Aeolus satellite was launched by the ESA on 22 August 2018 and became the first spaceborne wind lidar (Reitebuch et al., 2020; ESA, 2022). Four types of Aeolus HLOS winds are available: Mie-clear, Mie-cloudy, Rayleigh-clear, and Rayleigh-cloudy (Jos de Kloe et al., 2022), but Mie-cloudy and Rayleigh-clear winds have better quality than the others (Zuo et al., 2022; Rani et al., 2022). The influences of assimilating Aeolus Mie-cloudy and Rayleigh-clear near-real-time NRT HLOS winds on the forecasts of TCs and tropical convective systems have yet to be

investigated. Thus, this study assesses the impacts of assimilating Aeolus Mie-cloudy and Rayleigh-clear HLOS winds on the analysis and forecasts of Hurricane Ida (2021) and an MCS embedded in an AEW during the CPEX-AW field campaign (2021). The WRF model and NCEP GSI-based 3DnVAR hybrid DA system are applied in this study.

Ida (2021) originated from an AEW on 14 August 2021 and became a TD on 26 August 2021, 12:00:00 UTC. Six hours after cyclogenesis, it intensified into a TS. Ida (2021) experienced two RI periods: from 00 UTC to 18 UTC on 27 August 2021 (RI1); and from 28 August 2021, 12:00:00 UTC, to 29 August 2021, 12:00:00 UTC (RI2). Between these two RI periods, Ida (2021) made landfall in Cuba around 28 August 2021, 00:00:00 UTC (Beven II et al., 2022). Eight cycling DA experiments, including experiments 2406, 2406_L2B, 2412, 2412_L2B, 2418, 2418_L2B, 2500, and 2500_L2B, are carried out to investigate the impacts of assimilating Aeolus HLOS winds on the track and intensity forecasts of Ida (2021), especially during the two RI periods. The horizontal and vertical ensemble localization scales of these eight cycling DA experiments are set to 110 km and 3 grid units, respectively, which has been proved reasonable for the data assimilation experiments by a sensitivity study. Compared with the experiments without assimilation of Aeolus HLOS winds (experiments 2406, 2412, 2418, and 2500), the track forecasts are improved after assimilation of Aeolus HLOS winds (experiments 2406_L2B, 2412_L2B, 2418_L2B, 2500_L2B). The impacts on intensity forecasts are neutral in experiments 2406_L2B and 2412_L2B, while small but continuous improvements in intensity forecasts can be found in experiments 2418_L2B, and 2500_L2B. In addition, the ETS scores against the IMERG precipitation data near the center of Ida (2021) show that assimilating Aeolus HLOS winds can improve the 6-h accumulated precipitation forecasts for strong convection (10 mm and 15 mm). One reason for the improved intensity and precipitation forecasts after assimilation of Aeolus HLOS winds is the stronger divergence in the upper level of the troposphere, as indicated by the averaged analysis increments of divergence within a 300 km radius of the center of Ida (2021) on 25 August 2021, 12:00:00 UTC and 26 August 2021, 12:00:00 UTC in experiments 2418_L2B and 2500_L2B. In addition to Hurricane Ida (2021), we also perform experiments 1918 and 1918_L2B to examine the impacts of assimilating Aeolus HLOS winds on an MCS embedded in an AEW, which was steered by a subtropical high and propagated westward from 19 August 2021, 12:00:00 UTC to 20 August 2021, 00:00:00 UTC in the Caribbean Sea. The results of the MCS demonstrate that assimilating Aeolus HLOS winds leads to better structure of the 6-h accumulated precipitation from 21 August 2021, 18:00:00 UTC to 22 August 2021, 00:00:00 UTC, and rainfall-induced low-level divergence on 22 August 2021, 00:00:00 UTC.

~~Although this~~This study demonstrates the positive impacts of assimilating Aeolus Mie-cloudy and Rayleigh-clear winds on the forecasts of Hurricane Ida (2021) ~~and the MCS associated with an AEW, the assimilation techniques require further investigation and enhancement with comprehensive experiments.~~ More case studies are needed if the operational assimilation of Aeolus HLOS winds is required. Future studies ~~will improve~~should emphasize improving the technique of Aeolus HLOS wind assimilation with more cases of hurricanes and tropical convective systems.

Data availability. The NCEP operational Global Forecast System analysis and forecasts at a 6-hourly interval are obtained from <https://rda.ucar.edu/datasets/ds084.1> (last access: 31 August 2022, National Center for Atmospheric Research). The
495 Aeolus L2B scientific wind products are accessed via <https://aeolus-ds.eo.esa.int/oads/access/collection> (last access: 05
September 2022, European Space Agency). The NHC best-track data can be accessed via <https://www.nhc.noaa.gov/data> (last
access: 14 September 2022, National Hurricane Center and Central Pacific Hurricane Center). IMERG precipitation data are
downloaded from https://disc.gsfc.nasa.gov/datasets/GPM_3IMERGHH_06/summary (last access: 12 April 2022, Goddard
Earth Sciences Data and Information Services Center).

500

Author contribution. Chengfeng Feng collected the data, performed the experiments, analyzed the experiment results, and drafted the manuscript. Zhaoxia Pu evolved the overall research goals and aims, acquired the financial support for the project leading to this publication, and revised the manuscript critically.

505 **Competing interests.** The authors declare that they have no conflict of interest.

Acknowledgements. We appreciate the NCAR WRF model development group for providing the WRF model, the UCAR Developmental Tested Center (DTC) for the GSI DA system source code, and the Center for High-Performance Computing (CHPC) at the University of Utah for computer support. The NASA Award 80NSSC20K0900 is ~~also~~
510 ~~acknowledged~~acknowledged for its support. Comments from two anonymous reviewers are helpful and greatly appreciated.

References

Andersson, E., Dabas, A., Endemann, M., Ingmann, P., Källén, E., Offiler, D., and Stoffelen, A.: ADM-Aeolus science report, ESA, 130 pp., <https://esamultimedia.esa.int/multimedia/publications/SP-1311/SP-1311.pdf>, 2008.

515 Baars, H., Herzog, A., Heese, B., Ohneiser, K., Hanbuch, K., Hofer, J., Yin, Z., Engelmann, R., and Wandinger, U.: Validation of Aeolus wind products above the Atlantic Ocean, *Atmos. Meas. Tech.*, 13, 60070-6024, <https://doi.org/10.5194/amt13-6007-2020>, 2020.

520 Baker, W. E., Atlas, R., Cardinali, C., Clement, A., Emmitt, G. D., Gentry, B. M., Hardesty, R. M., Källén, E., Kavaya, M. J., Langland, R., and Ma, Z.: Lidar-measured wind profiles: The missing link in the global observing system, *Bull. Amer. Meteor.*, 95, 543-564, <https://doi.org/10.1175/BAMS-D-12-00164.1>, 2014.

- Banyard, T. P., Wright, C. J., Hindley, N. P., Halloran, G., Krisch, I., Kaifler, B., and Hoffmann, L.: Atmospheric gravity waves in Aeolus wind lidar observations, *Geophys. Res. Lett.*, 48, e2021GL092756, <https://doi.org/10.1029/2021GL092756>, 2021.
- 525 2021.
- Beven II, J. L., Hagen, A., and Berg, R.: Hurricane Ida (AL092021), National Hurricane Center, 163 pp., https://www.nhc.noaa.gov/data/tcr/AL092021_Ida.pdf, 2022.
- 530 Dudhia, J.: Numerical study of convection observed during the winter monsoon experiment using a mesoscale two-dimensional model, *J. Atmos. Sci.*, 46, 3077-3107, [https://doi.org/10.1175/1520-0469\(1989\)046<3077:NSOCOD>2.0.CO;2](https://doi.org/10.1175/1520-0469(1989)046<3077:NSOCOD>2.0.CO;2), 1989.
- ESA-A guide to Aeolus range bin settings: <https://earth.esa.int/eogateway/news/a-guide-to-aeolus-range-bin-settings>, last access: 24 December 2022, 2020.
- 535 access: 24 December 2022, 2020.
- ESA-Facts and figures: https://www.esa.int/Applications/Observing_the_Earth/Aeolus/Facts_and_figures, last access: 24 December 2022.
- 540 ESA: ESA Aeolus online dissemination system, ESA [data set], <https://aeolus-ds.eo.esa.int/oads/access/>, 2021.
- Garrett, K., Liu, H., Ide, K., Hoffman, R. N., and Lukens, K. E.: Optimization and Impact Assessment of Aeolus HLOS Wind Data Assimilation in NOAA's Global Forecast System, *Q. J. R. Meteorol. Soc.*, 148, 2703-2716, <https://doi.org/10.1002/qj.4331>, 2022.
- 545 Guo, J., Liu, B., Gong, W., Shi, L., Zhang, Y., Ma, Y., Zhang, J., Chen, T., Bai, K., Stoffelen, A., and de Leeuw, G.: First comparison of wind observations from ESA's satellite mission Aeolus and ground-based radar wind profiler network of China, *Atmos. Chem. Phys.*, 21, 2945-2958, <https://doi.org/10.5194/acp-21-2945-2021>, 2021.
- 550 Hong, S. Y., and Lim, J. O. J.: The WRF single-moment 6-class microphysics scheme (WSM6), *J. Korean Meteor. Soc.*, 42, 129-151, 2006.
- Hong, S. Y., Noh, Y., and Dudhia, J.: A new vertical diffusion package with an explicit treatment of entrainment processes, *Mon. Wea. Rev.*, 134, 2318-2341, <https://doi.org/10.1175/MWR3199.1>, 2006.
- 555

- Huffman, G. J., Stocker E. F., Bolvin D. T., Nelkin E. J., and Tan, J.: GPM IMERG Final Precipitation L3 Half Hourly 0.1 degree x 0.1 degree V06, Goddard Earth Sciences Data and Information Services Center [data set], <https://doi.org/10.5067/GPM/IMERG/3B-HH/06>, 2019.
- 560 Ingmann, P., and Straume, A. G.: ADM-AEOLUS mission requirements document, ESA, 57 pp., https://esamultimedia.esa.int/docs/EarthObservation/ADM-Aeolus_MRD.pdf, 2016.
- Janjić, T., Bormann, N., Bocquet, M., Carton, J. A., Cohn, S. E., Dance, S. L., Losa, S. N., Nichols, N. K., Potthast, R., Waller, J. A., and Weston, P.: On the representation error in data assimilation, *Q. J. R. Meteorol. Soc.*, 144, 1257-1278, 565 <https://doi.org/10.1002/qj.3130>, 2018.
- Jiménez, P. A., Dudhia, J., González-Rouco, J. F., Navarro, J., Montávez, J. P., and García-Bustamante, E.: A revised scheme for the WRF surface layer formulation, *Mon. Wea. Rev.*, 140, 898-918, <https://doi.org/10.1175/MWR-D-11-00056.1>, 2012.
- 570 Jos de Kloe, K. N. M. I., and Rennie, M.: Aeolus data innovation science cluster DISC ADM-Aeolus Level-2B/2C processor input/output data definitions interface control document, ECMWF, 128 pp., <https://earth.esa.int/eogateway/documents/20142/37627/Aeolus-L2B-2C-Input-Output-DD-ICD.pdf>, 2022.
- 575 Kain, J. S.: The Kain–Fritsch convective parameterization: An update, *J. Appl. Meteor. Climatol.*, 43, 170-181, [https://doi.org/10.1175/1520-0450\(2004\)043<0170:TKCPAU>2.0.CO;2](https://doi.org/10.1175/1520-0450(2004)043<0170:TKCPAU>2.0.CO;2), 2004.
- Krisch, I., Hindley, N. P., Reitebuch, O., and Wright, C. J.: On the derivation of zonal and meridional wind components from Aeolus horizontal line-of-sight wind, *Atmos. Meas. Tech.*, 15, 3465-3479, <https://doi.org/10.5194/amt-15-3465-2022>, 580 2022.
- Laroche, S., and St-James, J.: Impact of the Aeolus Level-2B horizontal line-of-sight winds in the Environment and Climate Change Canada global forecast system, *Q. J. R. Meteorol. Soc.*, 148, 2047-2062, <https://doi.org/10.1002/qj.4300>, 2022.
- 585 Lukens, K. E., Ide, K., Garrett, K., Liu, H., Santek, D., Hoover, B., and Hoffman, R. N.: Exploiting Aeolus level-2b winds to better characterize atmospheric motion vector bias and uncertainty, *Atmos. Meas. Tech.*, 15, 2719-2743, <https://doi.org/10.5194/amt-15-2719-2022>, 2022.

- 590 Marinescu, P. J., Cucurull, L., Apodaca, K., Bucci, L., and Genkova, I.: The characterization and impact of Aeolus wind
profile observations in NOAA's regional tropical cyclone model (HWRF), *Q. J. R. Meteorol. Soc.*, 148, 3491-3508,
<https://doi.org/10.1002/qj.4370>, 2022.
- 595 Martin, A., Weissmann, M., Reitebuch, O., Rennie, M., Geiß, A., and Cress, A.: Validation of Aeolus winds using
radiosonde observations and numerical weather prediction model equivalents, *Atmos. Meas. Tech.*, 14, 2167-2183,
<https://doi.org/10.5194/amt-14-2167-2021>, 2021.
- 600 Mlawer, E. J., Taubman, S. J., Brown, P. D., Iacono, M. J., and Clough, S. A.: Radiative transfer for inhomogeneous
atmospheres: RRTM, a validated correlated-k model for the longwave, *J. Geophys. Res.*, 102, 16663-16682,
<https://doi.org/10.1029/97JD00237>, 1997.
- 605 Pourret, V., Šavli, M., Mahfouf, J. F., Raspaud, D., Doerenbecher, A., Bénichou, H., and Payan, C.: Operational assimilation
of Aeolus winds in the Météo-France global NWP model ARPEGE, *Q. J. R. Meteorol. Soc.*, 148, 2652-2671,
<https://doi.org/10.1002/qj.4329>, 2022.
- 610 Pu, Z., Zhang, L., and Emmitt, G. D.: Impact of airborne Doppler Wind Lidar data on numerical simulation of a tropical
cyclone, *Geophys. Res. Lett.*, 37, L05801, <https://doi.org/10.1029/2009GL041765>, 2010.
- 615 Pu, Z., Zhang, L., Zhang, S., Gentry, B., Emmitt, D., Demoz, B., and Atlas, R.: The impact of Doppler wind lidar
measurements on high-impact weather forecasting: Regional OSSE and data assimilation studies in: *Data Assimilation for
Atmospheric, Oceanic and Hydrologic Applications (Vol. III)*, edited by: Park, S. K., and Xu, L., Springer, Berlin,
Heidelberg, Germany, 259-283, https://doi.org/10.1007/978-3-319-43415-5_12, 2017.
- 620 Rani, S. I., Jangid, B. P., Kumar, S., Bushair, M. T., Sharma, P., George, J. P., George, G., and Das Gupta, M.: Assessing the
quality of novel Aeolus winds for NWP applications at NCMRWF, *Q. J. R. Meteorol. Soc.*, 148, 1344-1367,
<https://doi.org/10.1002/qj.4264>, 2022.
- 625 Reitebuch, O., Lemmerz, C., Lux, O., Marksteiner, U., Rahm, S., Weiler, F., Witschas, B., Meringer, M., Schmidt, K.,
Huber, D., Nikolaus, I., Geiss, A., Vaughan, M., Dabas, A., Flament, T., Stieglitz, H., Isaksen, L., Rennie, M., de Kloe, J.,
Marseille, G.-J., Stoffelen, A., Wernham, D., Kanitz, T., Straume, A.-G., Fehr, T., von Bismark, J., Floberghagen, R., and
Parrinello, T.: Initial assessment of the performance of the first Wind Lidar in space on Aeolus, *The 29th International Laser
Radar Conference*, Heifei, China, 24-28 June 2019, 01010, <https://doi.org/10.1051/epjconf/202023701010>, 2020.

- Reitebuch, O., Lemmerz, C., Nagel, E., Paffrath, U., Durand, Y., Endemann, M., Fabre, F., and Chaloupy, M.: The airborne demonstrator for the direct-detection Doppler wind lidar ALADIN on ADM-Aeolus. Part I: Instrument design and comparison to satellite instrument, *J. Atmos. Ocean Technol.*, 26, 2501-2515, <https://doi.org/10.1175/2009JTECHA1309.1>, 2009.
- Rennie, M. P., and Isaksen, L.: The NWP impact of Aeolus level-2B winds at ECMWF, ECMWF, 110 pp., <https://doi.org/10.21957/alift7mhr>, 2020.
- Rennie, M. P., Isaksen, L., Weiler, F., de Kloe, J., Kanitz, T., and Reitebuch, O.: The impact of Aeolus wind retrievals on ECMWF global weather forecasts, *Q. J. R. Meteorol. Soc.*, 147, 3555-3586, <https://doi.org/10.1002/qj.4142>, 2021a.
- Rennie, M., Stoffelen, A., Khaykin, S., Osprey, S., Wright, C., Banyard, T., Straume, A. G., Reitebuch, O., Krisch, I., Parrinello, T., and Von Bismarck, J.: Demonstrated Aeolus benefits in atmospheric sciences, in: 2021 IEEE International Geoscience and Remote Sensing Symposium IGARSS, Brussels, Belgium, 11-16 July 2021, 763-766, <https://doi.org/10.1109/IGARSS47720.2021.9554267>, 2021b.
- Skamarock, W. C., Klemp, J. B., Dudhia, J., Gill, D. O., Liu, Z., Berner, J., Wang, W., Powers, J. G., Duda, M. G., Barker, D. M., and Huang, X. Y.: A description of the advanced research WRF model version 4, NCAR, 145 pp., <https://doi.org/10.5065/1dfh-6p97>, 2019.
- Tewari, M., Chen, F., Wang, W., Dudhia, J., LeMone, M. A., Mitchell, K., Ek, M., Gayno, G., Wegiel, J., and Cuenca, R. H.: Implementation and verification of the unified NOAA land surface model in the WRF model, 20th Conf. on Weather Analysis and Forecasting/16th Conf. on Numerical Weather Prediction, Seattle, WA, U.S., January 2004, 14.2a, https://ams.confex.com/ams/84Annual/techprogram/paper_69061.htm, 2004.
- WMO: Guide to meteorological instruments and methods of observation, 2014 edition, WMO, Geneva, Switzerland, 1177 pp., <http://dx.doi.org/10.25607/OBP-432>, 2017.
- Witschas, B., Lemmerz, C., Geiß, A., Lux, O., Marksteiner, U., Rahm, S., Reitebuch, O., and Weiler, F.: First validation of Aeolus wind observations by airborne Doppler wind lidar measurements, *Atmos. Meas. Tech.*, 13, 2381-2396, <https://doi.org/10.5194/amt-13-2381-2020>, 2020.

- 655 Witschas, B., Lemmerz, C., Geiß, A., Lux, O., Marksteiner, U., Rahm, S., Reitebuch, O., Schäfler, A., and Weiler, F.:
Validation of the Aeolus L2B wind product with airborne wind lidar measurements in the polar North Atlantic region and in
the tropics, *Atmos. Meas. Tech.*, 15, 7049-7070, <https://doi.org/10.5194/amt-15-7049-2022>, 2022.
- 660 Wu, S., Sun, K., Dai, G., Wang, X., Liu, X., Liu, B., Song, X., Reitebuch, O., Li, R., Yin, J., and Wang, X.: Inter-
comparison of wind measurements in the atmospheric boundary layer and the lower troposphere with Aeolus and a ground-
based coherent Doppler lidar network over China, *Atmos. Meas. Tech.*, 15, 131-148, <https://doi.org/10.5194/amt-15-131-2022>, 2022.
- 665 Zhang, L., Pu, Z.: An Observing System Simulation Experiment (OSSE) to assess the impact of Doppler wind lidar (DWL)
measurements on the numerical simulation of a tropical cyclone, *Adv. Meteorol.*, 2010, Article ID 743863,
<https://doi.org/10.1155/2010/743863>, 2010.
- 670 Zuo, H., Hasager, C. B., Karagali, I., Stoffelen, A., Marseille, G. J., and De Kloe, J.: Evaluation of Aeolus L2B wind product
with wind profiling radar measurements and numerical weather prediction model equivalents over Australia, *Atmos. Meas.*
Tech., 15, 4107-4124, <https://doi.org/10.5194/amt-15-4107-2022>, 2022.