

Technique for comparison of backscatter coefficients derived from in-situ cloud probe measurements with concurrent airborne Lidar

Shawn W. Wagner¹, David J. Delene¹

¹Atmospheric Sciences, University of North Dakota, Grand Forks, 58202, United States of America

5 *Correspondence to:* Shawn W. Wagner (shawn.wagner.atmos@gmail.com)

Abstract

Jet engine power loss due to ice particle accumulation is a recognized aviation hazard occurring in cloud conditions difficult to forecast or visually recognize. High-altitude cirrus clouds can have ice particle concentrations high enough to be dangerous; therefore, pilots must be informed when aircraft enter such environments. One approach to determining ice particle concentration is an onboard Lidar system. Concurrent Lidar measurements are compared to backscatter coefficients derived from particle size distributions obtained from wing-mounted, in-situ probes during four case studies consisting of sixty-second flight segments at different temperatures: +7 °C and +4 °C for water droplet analysis, -33 °C and -46 °C for ice particle analysis. Backscatter coefficients derived from external cloud probes (ECP) are correlated (0.91) with measurements by an airborne Lidar system known as the Optical Ice Detector (OID). Differences between OID and ECP backscatter coefficients range from less than 1 to over 3 standard deviations uncertainties. The backscatter coefficients are mostly in agreement for liquid clouds and in disagreement for the -33 °C and -46 °C cases, with ECP derived backscatter coefficients lower than the OID for three out of the four cases. Measurements over four 60 s research flight segments show that measured total water content is correlated (0.74) with the OID backscatter coefficient, which indicates that the OID is a useful instrument for determining ice particle concentrations over a broad range of environments, including at ice water contents as low as 0.02 g m⁻³. Additionally, concurrent measurements from cloud imaging probes and the OID provides improved knowledge of cloud conditions that may help in understanding cloud processes.

1 Introduction

Airborne ice particle ingestion into the engines of high-altitude jets are a serious aviation hazard in certain conditions. A number of power loss events caused by ice ingestion have occurred since 1990 (Lawson et al., 1998), which prompted the Federal Aviation Administration to issue Airworthiness Directive 2013-NM-209-AD (Airworthiness Directives; The Boeing Company Airplanes, 2020). 2013-NM-209-AD requires flight manuals of Boeing models 747-8, 747-8f, and 787-8 to advise the attending flight crew of potential ice particle icing conditions at high altitudes, and prohibits flight operation in those

conditions. Such regulations create the need for instruments that alert flight crews whenever the aircraft enter dangerous environments, which can include sub-visible and radar undetected, ice clouds. The Optical Ice Detector (OID) is an onboard, short-range cloud Lidar that is under development by Collins Aerospace to detect and characterize hazardous cloud environments (Ray et al., 2009; Halama et al., 2010; Ray and Anderson, 2015). As with any cloud Lidar, the OID measures backscatter, which depends mainly on the number and size of liquid droplets and ice crystals.

The objective is to evaluate the 2015 OID instrument using backscatter coefficient measurements and backscatter coefficients derived from particle size distributions obtained from state-of-the-art cloud probe observations. The evaluation uses backscatter coefficient uncertainty obtained by summing each size channel's uncertainty, which is derived using both particle concentration and channel width. Quantitative comparisons of OID backscatter to research grade cloud probes is a major step in the deployment process of a commercial, onboard Lidar system to alert flight crews of dangerous ice concentration conditions. Additionally, such comparisons enable evaluation of backscatter theory, the processing of measurements, and the interpretation of observations.

2 Background

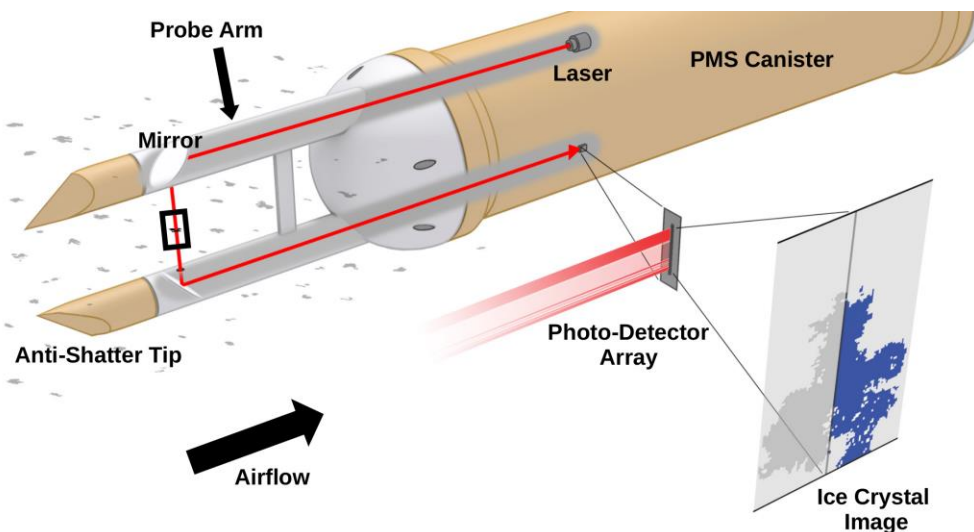
Since the early 1990s, there have been over 240 ice ingestion-related incidents involving commuter and large transport aircraft (Mason et al., 2006). Many of these aircraft incidents occurred at altitudes greater than 3000 m above MSL (mean sea level) (Bravin and Strapp, 2019) and near convective clouds (Haggerty et al., 2018). Before the early 2000s, ice particles in convective clouds were believed not to adhere to cold engine components and hence were not considered a safety hazard. However, power loss incident frequency continued to increase as the number of high-altitude flights increased. Analysis of power loss events above 3000 m MSL (Mason et al., 2006) indicated that aircraft would gradually lose power, with some aircraft experiencing total engine shut down. Once the aircraft descended to below 3000 m MSL, most failed engines were restarted and normal engine performance was restored. However, in some cases engine damage was sustained.

In 2002, a transport aircraft with dual Rosemount Icing Detectors experienced engine power loss without the presence of supercooled liquid water (Mason et al., 2006). Post event analysis concluded that ice ingestion-related shutdowns can take place in environments consisting entirely of ice crystals, not simply in environments with super-cooled liquid water. This aircraft hazard from ice particles causing engine power loss was termed "ice particle icing" (Mason et al., 2006) or "ice crystal icing" (Haggerty et al., 2018) to differentiate it from "icing" of surfaces from the impaction and accretion of super-cooled liquid droplets. In 2013, an event occurred above 10 km that caused permanent damage to engine compressors and prompted an Airworthiness Directive issuance (Airworthiness Directives; The Boeing Company Airplanes, 2020) on 27 November 2013.

Cirrus clouds can contain ice crystal concentrations high enough to impact the performance of aircraft engines (Gayet et al., 2012; Heymsfield, 1986) and pitot tubes (Jarvinen, 2013). Analysis of 22 mid-latitude cirrus clouds shown an average ice

particle concentration of 1 cm^{-3} , with some concentrations above 5 cm^{-3} (Lawson et al., 2006a). However, most cirrus clouds have concentrations from 0.01 cm^{-3} to 1 cm^{-3} (Krämer et al., 2009). Typically, ice crystal concentration increases with higher updraft speed and the subsequent increase in supersaturation (Heymsfield and Miloshevich, 1993). Frey et al. (2011) found that outflow from developing mesoscale convective systems in Africa contained ice particle concentrations as high as 8.3 cm^{-3} , with sub-visible cirrus having an average ice particle concentration of 0.01 cm^{-3} . See Heymsfield et al. (2017) for additional information on cirrus cloud properties and processes.

Due to their potentially high concentrations, and often lack of visibility to pilots and on-board radar, cirrus clouds pose an aircraft flight safety hazard due to potential engine power loss. Mitigating this hazard requires alerting flight crews of dangerous ice particle concentrations using onboard instrumentation. Research grade aircraft instruments for measuring ice particle concentration have been available since the 1970s (Baumgardner et al., 2017). Optical array probes are a class of in-situ instruments that measure individual particle size using the blockage of laser light (shadows) on an array of diodes (Fig. 1). The fundamental measurement is the two-dimensional shadow area of individual particles, which are generally used to obtain size distributions by deriving the particle diameter. However, the fundamental measurement of a cloud imaging probe is particle shadow area where light is decreased by 50 % or more.



75 **Figure 1: Illustration showing the side view of a two-dimensional optical array probe in a Particle Measurement Systems, Inc., (PMS)**
canister. Images are obtained as particles pass through the laser beam (solid, red line) when the aircraft's speed creates airflow past
the probe. The laser beam is directed between the probe arms using two 90 degree mirrors. Particles passing through the laser beam
block light causing reduced illumination on some diodes in the photodiode array. Images are produced when at least one array
element is reduced in intensity by a set amount (e.g., > 50 %). The depth of field (the location where the particle must cross the beam
to be clearly imaged) is indicated with a black rectangle. The sampling frequency of the photodetector array is adjusted using the
80 measured true air speed, so images (example given in lower right) have symmetric pixel elements. Heated, anti-shattering tips
prevent ice accretion and reduce the number of shattered particles that enter the sample volume (Korolev and Isaac 2005). Credit:
Nowatzki, 2019.

To avoid placing probes directly into the air stream, instruments have been developed that use flush-mounted windows which
allow observations without altering the air flow around an aircraft. One such system is the Droplet Measurement Technologies
85 (DMT) Backscatter Cloud Probe (BCP), which measures the backwards scattering of a continuous wave laser beam from cloud
water droplets and ice crystals outside the aircraft (Beswick et al., 2014). The BCP has a sample volume of approximately 125
 $\text{cm}^3 \text{s}^{-1}$ at an aircraft speed of 100 m s^{-1} that is located approximately 4 cm from the aircraft skin. The BCP has been deployed
on commercial aircraft to measure the particle size distribution (Beswick et al., 2015). BCP measurements have been evaluated
(Beswick et al., 2015) using comparisons with a Cloud Droplet Probe (CDP) and a Cloud and Aerosol Spectrometer (CAS)
90 probe.

The OID is similar to the BCP in using an observation window; however, the OID uses a Lidar with a conical sample volume
that extends up to 10 m from the aircraft (Ray and Anderson, 2015). The OID sample volume is $4500 \text{ cm}^3 \text{s}^{-1}$ at 100 m s^{-1} with
a viewing direction perpendicular to the forward motion of the aircraft (Fig. 2), and uses a circularly polarized wavelength of
905 nm and a randomly orientated, linearly polarized wavelength of 1550 nm. With the 905 nm the OID is able to measure
95 both the first Stokes parameter as well as the fourth Stokes parameter (Liou and Yang, 2016; van de Hulst, 1981). The fourth
Stokes parameter is the focus of this study, and the 1550 nm wavelength channel is not used in the analysis. The OID's large
sample volume, ability to observe in the unperturbed air ahead of the aircraft, and flush mounting are important for commercial
applications in detecting hazardous aircraft environments. Additionally, the OID's larger sample volume compared to other
aircraft instruments is advantageous for comparison with other remote sensing platforms (e.g., CALIPSO). Hence, a research
100 grade OID type instrument would be an important tool for linking small scale microphysical cloud observations to large scale
remote sensing observations.

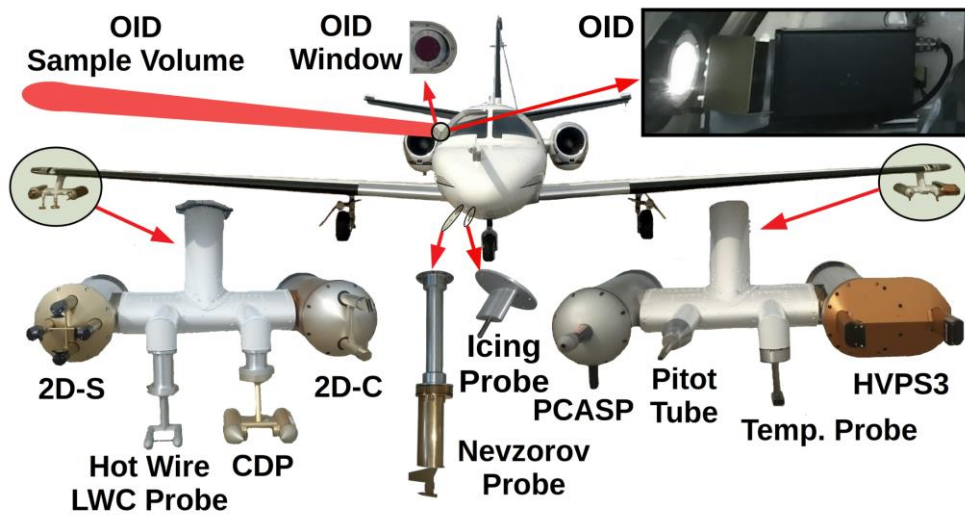


Figure 2: Image showing the North Dakota Citation Research Aircraft with an enlarged view of the wing-tip pylons, the Nevzorov probe and the Rosemount Icing Probe as mounted for the 2015 field project over Cape Canaveral, Florida (CAPE2015). OID Window (upper center) is the viewing port through the pressurized cabin for the Optical Ice Detector (OID). The OID is angled slightly (10 to 15 degrees) forward of the wing so the sampling region (OID Sample Volume) is in front of and above the right wing. An image of the OID in the Citation fuselage is shown in the upper right. The Cloud Droplet Probe (CDP) measures particles from 2 to 50 μm (30 channels) using forward light scattering. The Two-Dimensional Stereo (2D-S) probe measures particles using shadowed diodes (two (one horizontal and one vertical) 128 element arrays) of 10 μm . The High-Volume Precipitation Spectrometer Version 3 (HVPS3) measures particles using shadow diodes (128 element array) of 150 μm . The Two Dimensional Cloud probe (2D-C) is an older probe that also measures particles using shadowed diodes (32 element array) of 30 μm . The Rosemount Icing Probe detects super-cooled liquid water using a vibrating metal rod. The Nevzorov probe is a hot-wire probe that measures liquid and total water content (TWC). Subtracting the liquid water content LWC from the TWC determines the ice water content (IWC). The King Hot Wire Liquid Water Content Probe is an older probe that only measures LWC. The Passive Cavity Aerosol Spectrometer Probe (PCASP) model measures aerosols from 0.1 to 3.0 μm . The Rosemount temperature probe (Temp. Probe) measures ambient air temperature, and the pitot tube measures air speed using a differential pressure transducer connected to a static and a forward facing port.

3 Measurements

The OID has been deployed on the North Dakota Citation Research Aircraft (Delene et al., 2019) during several field projects, including a 2015 field project (CAPE2015) to study Florida thunderstorms (Schmidt et al., 2019). The Citation Research Aircraft has conducted several research projects to collect cloud microphysical observations using various instrumentation configurations (Skofronick-Jackson et al., 2014; Jensen et al., 2015; Delene, 2016). Multiple field projects have included OID measurements; however, this study analyzes data (Wagner and Delene, 2020a) only from CAPE2015 flights, which focused on measurements of cirrus cloud anvils from convective storms. An OID is mounted in the Citation Research Aircraft's

125 fuselage to measure backscattered light from cloud particles slightly ahead of and along the span of the aircraft wing (Fig. 2).
The OID's viewing port is fitted with anti-reflection coated glass. A fan moves cabin air across the port window to prevent
water and ice condensation on the inside surface. Interested readers are referred to Ray and Anderson (2015) for a thorough
description of the OID instrument and how it obtains measurements, as only a brief summary is provided herein.

The OID measurement of backscatter coefficient (β in units of $\text{km}^{-1} \text{sr}^{-1}$) assumes a homogeneous cloud particle distribution
135 over the sampling distance R . The backscatter coefficient is calculated by inverting the returned Lidar power P_R equation:

$$P_R = \beta G_R e^{-2\epsilon R}, \quad (1)$$

where G_R is a light collection efficiency as a function of particle range, ϵ is the extinction coefficient, and R is the range to the
particles (Ray and Anderson, 2015). ϵ is derived by curve fitting the OID measured attenuation and unattenuated backscatter
(where the alpha parameter is the attenuation, and the y-intercept is the true unattenuated backscatter), allowing for ϵ to vary
135 with the changing cloud conditions. As the sampling volume of the OID is relatively small, attenuation by ice crystals is low.
Thus, a correction with the two-way transmissivity is unnecessary. While a complete OID error analysis is not yet available,
the primary error source is likely the inversion of the range-resolved Lidar signal to estimate extinction. For additional details
regarding Lidar retrievals, readers are encouraged to see Lolli et al. (2013). While the backscatter coefficient includes scattering
from both molecules and cloud particles, the OID is not sensitive enough to measure molecular only scattering (Ray and
140 Anderson, 2015); therefore, it is assumed that all backscatter is from cloud particles.

The OID emits light pulses at a repetition rate of 20 kHz, with each pulse having a temporal width of 4 ns full width at half
maximum (Halama et al., 2010). The 20 kHz measurements are aggregated to produce 5 Hz raw data. Raw data is averaged to
match the 1 Hz external cloud probe (ECP) processed data. The 1 Hz frequency data has more uncertainty than 5 or 10 s
averaged data; however, 1 Hz data is able to detect rapid changes in cloud conditions that are important when monitoring
145 environmental conditions from a fast-moving aircraft and for understanding cloud processes. While the OID transmits both
905 nm and 1550 nm laser light, absorption at 905 nm by water is approximately 1000 times less than at 1550 nm. Hence,
using only the 905 nm wavelength simplifies analysis by eliminating the consideration of absorption.

The North Dakota Citation Research Aircraft is a Cessna model 550, fan-jet aircraft that has instruments to measure
atmospheric state parameters such as temperature, relative humidity, and wind velocities, as well as the cloud particle size
150 distribution using a set of in-situ cloud probes. In-situ cloud microphysical instrumentation (Fig. 2) includes a Stratton Park
Engineering Company Incorporated (SPEC) Two-Dimensional Stereo (2D-S) probe (Lawson et al., 2006b), a SPEC High-
Volume Precipitation Spectrometer Version Three (HVPS3) probe (Kumjian et al., 2016), and a Sky Tech Research
Incorporated Nevzorov probe (Korolev et al., 2013b). Optical array probes, such as the 2D-S and HVPS3, use a laser beam
between probe arms directed onto an array of photodiodes to observe shadowing by passing cloud particles during flight (Fig.

155 1). The 2D-S has 128 diodes with a 10 μm resolution and the HVPS3 has 128 diodes with a 150 μm resolution. Ice crystals and water droplets passing through the laser beam between the arms block light, causing reduced illumination on some of the individual elements of the photodiode array. Images are produced when at least one array element is “shadowed” (i.e. reduced in intensity by 50 % or more). This imaging threshold and its accuracy are further discussed in McFarquhar et al. (2017). The sample duration of the photodetector array is adjusted using the measured true air speed so images have correctly scaled pixels.

160 When cloud particle concentrations are high, the 2D-S probe may not have sufficient time to off-load the array buffers as quickly as they are filled, which results in reduced probe activity (Lawson et al., 2006b). CAPE2015 has no “dead time” issues as the particle concentration is low enough that the probe’s activity is 100 % during all flights analyzed.

The Nevzorov probe is a hot-wire instrument with sensors to measure cloud liquid and total (liquid + ice) water content (Korolev et al., 1998). The total water content (TWC) sensor uses a conical receiver to collect both liquid water droplets and

165 ice crystals, while the liquid water content (LWC) sensor uses a round wire to collect droplets but very few ice particles. Both sensors have corresponding reference sensors that are exposed to the airflow but not cloud particles. The additional power required to maintain constant temperature for particle sensors compared to reference sensors is directly related to water mass. Mass measurements and aircraft true airspeed are used to determine LWC and TWC. Ice water content (IWC) is not directly measured but calculated by subtracting LWC from TWC. Nevzorov probe data processing uses multiple linear regressions of

170 the measured static pressure and indicated airspeed to obtain a per-flight calibration (Schwarzenboeck et al., 2009), and an automatic baseline correction ensures out-of-cloud water content is zero (Delene et al., 2019). The uncertainty of Nevzorov measurements increases with hydrometeor size because large ice crystals may bounce out of the conical receiver before complete evaporation occurs, while large water droplets may not evaporate completely before bouncing from the conical receiver or shedding from the round wire. While it is possible to use the OID measurement to derive IWC (Anderson and Ray,

175 2019), the 2015 data set does not have a direct measurement of IWC. Hence, an IWC comparison would have more uncertainty than a backscatter coefficient comparison.

In recent years, efforts have been made to collectively document the uncertainties associated with optical cloud microphysical probes (Baumgardner et al., 2017). These uncertainties include the possibility of particles counted in the wrong size channel (Korolev et al., 1991; Baumgardner and Korolev, 1997), sizing uncertainty for ice particles outside of the focal volume

180 (Connolly et al., 2007), approximation of irregular ice particles as spheres (Wu and McFarquhar, 2016), and particle coincidence (Cooper, 1988; Lance, 2012; Johnson et al., 2014). These uncertainties are accounted for as much as possible in the data processing and analysis methodology used here. Additionally, splashing of water droplets and the shattering of ice crystals can cause measurement errors; hence, anti-shattering probe tips and data processing methods have been employed to minimize such issues.

185 **4 Data Processing**

The 2D-S and HVPS3 images are processed to obtain particle concentrations using the sample volume (SV) given by:

$$SV = DOF * w * TAS * t, \quad (2)$$

190 where DOF is the depth of field, w is the effective width of the photodiode array, TAS is the aircraft's true airspeed measured by a pitot tube, and t is elapsed time (McFarquhar et al., 2017). The depth of field (Fig. 1) is the region along the laser beam where particles are sufficiently within focus to create a clear shadow on a photodiode array (Korolev, 2007). $DOF*w$ is the sample area, while $TAS*t$ provides the third dimension in determining SV . The nose gust boom measured TAS and left wing pitot tube (Fig. 2) measured TAS agree within 3 % for the CAPE2015 field project.

Quality control conducted during the CAPE2015 field project involved instrument maintenance and performance checks. Instrument maintenance included cleaning the outside windows on all optical probes before each flight. Performance checks 195 included reviewing the voltages of the first and last (edge) photodiodes in the cloud probe arrays and ground testing instruments with spray water to ensure correct performance. To enable timely post-flight data review, the open source Airborne Data Processing and Analysis (ADPAA) software package (Delene, 2011) is used to automatically process and visualize data after each flight. Even with rigorous instrument quality control and assurance, data set problems can still occur. For example, the liquid cloud droplet size spectrum measured by a DMT CDP is inconsistent (i.e. a factor of ten low) compared to the 2D-S 200 size spectrum in the overlapping region. Misalignment of the CDP laser discovered after the CAPE2015 project makes the CDP measurements validity questionable; therefore, only the 2D-S and HVPS3 instruments are used to create a combined size spectrum.

All CAPE2015 two-dimensional optical array probe data are automatically processed using ADPAA code (Delene et al., 2020) that interfaces with the System for Optical Array Probe Data Analysis Version 2 (SODA2) software package (Bansemer, 205 2020). Even when using Korolev anti-shatter tips, bursts of particles over a short sampling period are likely shattering artifacts (Field et al., 2006); therefore, SODA2's shattering artifact rejection methodology is used for all CAPE2015 data processing. SODA2 processing of the CAPE2015 2D-S and HVPS3 images uses the center-of-mass-in method (Heymssfield and Parrish, 1978) to obtain particle concentrations. An ADPAA script merges 2D-S horizontal arms size channels (5 to 1000 μm) and HVPS3 (1000 to 30 000 μm) size channels obtained with SODA2 processing to create a combined particle size distribution 210 ranging from 5 to 30 000 μm , which is used for the analysis (Table 1). The 2D-S vertically oriented arm measurements are not used in the analysis; however, the two orientations have similar particle size distributions (see supplemental material). The CAPE2015 data has been previously processed and analyzed (Wagner, 2020) using the full reconstruction method (Heymssfield and Parrish, 1978); however, the center-of-mass-in method is used here since HVPS3 measurements are available to cover the larger particle size range, and the observed cirrus clouds do not have particles large enough to be excluded by center-of-mass-

215 in HVPS3 processing. Particle diameters are determined using the area-equivalent method, where the diameter is that of a
circle having an area equal to the pixel area contained within an imaged particle. Analysis using another method for
determining particle diameters, known as the fast-circle method, is shown in the supplemental material. In the fast-circle
method, the diameter is of the smallest circle that encompasses the imaged particle entirely. The area-equivalent method is
used herein as the method works best for spheroids; however, there is no generally agreed upon method for calculating the
220 effective diameter of clouds containing ice particles for many shapes. The area-equivalent and fast-circle are the two most
commonly accepted methods, and the interested reader can compare the analysis herein to the analysis presented in the
supplement to see how the methods affect the OID comparison.

225 **Table 1.** Table listing parameters for the particle size distribution created by combining Two-Dimensional Stereo (2D-S) and High-
Volume Precipitation Spectrometer Version 3 (HVPS3) probe measurements. The Number Column lists the combined spectrum
channel number, the Probe Column indicates which probe made the measurements, and Bin Columns gives the original probe's
channel number and total channels. The Size Range Column gives the lower and upper size of particles within the channel. The Size
Parameter Column gives the scattering size parameter (Eq. (3)) range for the lower and upper particle sizes at a wavelength of 905
230 nm. The Water Column lists backscatter efficiency for water particles, and the Ice Column lists backscatter efficiency for ice
particles. The Q Ratio Column gives ratio of backscatter efficiency of water to the backscatter efficiency of ice. The MiePlot software
package is used to calculate average efficiencies using particle diameters that span the combined spectrum width.

Number	Probe	Bin	Size Range	Size Parameter	Q(Water)	Q(Ice)	Q Ratio
1	2D-S	1 / 29	5 to 15 μm	17 to 52	0.1184	0.1276	0.9276
2	2D-S	2 / 29	15 to 25 μm	52 to 87	0.1128	0.1204	0.9369
3	2D-S	3 / 29	25 to 35 μm	87 to 122	0.1137	0.1412	0.8052
4	2D-S	4 / 29	35 to 45 μm	122 to 156	0.1142	0.1463	0.7806
5	2D-S	5 / 29	45 to 55 μm	156 to 191	0.1183	0.1456	0.8125
6	2D-S	6 / 29	55 to 65 μm	191 to 226	0.1172	0.1398	0.8383
7	2D-S	7 / 29	65 to 75 μm	226 to 260	0.1280	0.1355	0.9446
8	2D-S	8 / 29	75 to 85 μm	260 to 295	0.1269	0.1328	0.9556
9	2D-S	9 / 29	85 to 95 μm	295 to 330	0.1401	0.1247	1.1235
10	2D-S	10 / 29	95 to 105 μm	330 to 364	0.1399	0.1184	1.1816
11	2D-S	11 / 29	105 to 125 μm	364 to 434	0.1546	0.1137	1.3597
12	2D-S	12 / 29	125 to 145 μm	434 to 503	0.1634	0.1032	1.5833
13	2D-S	13 / 29	145 to 175 μm	503 to 607	0.1809	0.0932	1.9410
14	2D-S	14 / 29	175 to 225 μm	607 to 781	0.2070	0.0786	2.6336
15	2D-S	15 / 29	225 to 275 μm	781 to 955	0.2277	0.0663	3.4344
16	2D-S	16 / 29	275 to 325 μm	955 to 1128	0.2547	0.0590	4.3169
17	2D-S	17 / 29	325 to 400 μm	1128 to 1389	0.2728	0.0508	5.3701
18	2D-S	18 / 29	400 to 475 μm	1389 to 1649	0.2966	0.0486	6.1029
19	2D-S	19 / 29	475 to 550 μm	1649 to 1909	0.3182	0.0424	7.5047
20	2D-S	20 / 29	550 to 625 μm	1909 to 2170	0.3434	0.0404	8.5000
21	2D-S	21 / 29	625 to 700 μm	2170 to 2430	0.3581	0.0369	9.7046

22	2D-S	22 / 29	700 to 800 μm	2430 to 2777	0.3860	0.0321	12.025
23	2D-S	23 / 29	800 to 900 μm	2777 to 3124	0.3988	0.0314	12.701
24	2D-S	24 / 29	900 to 1,000 μm	3124 to 3471	0.4157	0.0276	15.062
25	HVPS3	5 / 28	1000 to 1200 μm	3471 to 4166	0.4390	0.0270	16.259
26	HVPS3	6 / 28	1200 to 1400 μm	4166 to 4860	0.4793	0.0238	20.139
27	HVPS3	7 / 28	1400 to 1600 μm	4860 to 5554	0.5139	0.0238	21.592
28	HVPS3	8 / 28	1600 to 1800 μm	5554 to 6248	0.5532	0.0215	25.730
29	HVPS3	9 / 28	1800 to 2200 μm	6248 to 7637	0.5831	0.0190	30.690
30	HVPS3	10 / 28	2200 to 2600 μm	7637 to 9025	0.6419	0.0171	37.538
31	HVPS3	11 / 28	2600 to 3000 μm	9025 to 10 414	0.6952	0.0154	45.143
32	HVPS3	12 / 28	3000 to 3400 μm	10 414 to 11 803	0.7173	0.0147	48.796
33	HVPS3	13 / 28	3400 to 3800 μm	11 803 to 13 191	0.7722	0.0132	58.500
34	HVPS3	14 / 28	3800 to 4200 μm	13 191 to 14 580	0.8018	0.0130	61.677
35	HVPS3	15 / 28	4200 to 4600 μm	14 580 to 15 968	0.8290	0.0121	68.512
36	HVPS3	16 / 28	4600 to 5000 μm	15 968 to 17 357	0.8433	0.0122	69.123
37	HVPS3	17 / 28	5000 to 6000 μm	17 357 to 20 828	0.8479	0.0118	71.856
38	HVPS3	18 / 28	6000 to 7000 μm	20 828 to 24 300	0.8409	0.0116	72.491
39	HVPS3	19 / 28	7000 to 8000 μm	24 300 to 27 771	0.8017	0.0111	72.225
40	HVPS3	20 / 28	8000 to 9000 μm	27 771 to 31 242	0.7330	0.0110	66.636
41	HVPS3	21 / 28	9000 to 10 000 μm	31 242 to 34 714	0.6373	0.0104	61.279
42	HVPS3	22 / 28	10 000 to 12 000 μm	34 714 to 41 656	0.4916	0.0101	48.673
43	HVPS3	23 / 28	12 000 to 14 000 μm	41 656 to 48 599	0.3467	0.0100	34.670
44	HVPS3	24 / 28	14 000 to 16 000 μm	48 599 to 55 542	0.2962	0.0104	28.481
45	HVPS3	25 / 28	16 000 to 18 000 μm	55 542 to 62 485	0.3878	0.0098	39.571
46	HVPS3	26 / 28	18 000 to 20 000 μm	62 485 to 69 427	0.5822	0.0103	56.524
47	HVPS3	27 / 28	20 000 to 25 000 μm	69 427 to 86 784	0.9381	0.0098	95.725
48	HVPS3	28 / 28	25 000 to 30 000 μm	86 784 to 104 141	0.9826	0.0092	106.80

5 Methodology

Cloud particles are typically much larger than the wavelengths (905 nm and 1550 nm) of the OID, especially particles in cirrus cloud anvils. The ratio of particle circumference to wavelength defines the light scattering regime (geometric, Mie, or Rayleigh) and is known as the size parameter α , which is given by:

$$235 \quad \alpha = \frac{\pi D}{\lambda}, \quad (3)$$

where D is the cloud particle diameter, and λ is the wavelength of incident light (van de Hulst, 1981). Light scattering is in the geometric optics regime when the size parameter is greater than 100, in the Mie regime when the size parameter is between

0.1 and 100, and in the Rayleigh regime when the size parameter is less than 0.1 (Bohren and Huffman, 1983). Most size channels of the combined cloud probe spectrum are in the geometric scattering regime (Table 1). However, determining backscatter coefficients from particle size distributions using geometric optics methods produces inaccuracies due to a lack of higher-order scattering terms (Yang and Liou, 1995; Zhou and Yang, 2015). Previous studies (Cairo et al., 2011) comparing in-situ measured particle size distributions and backscatter measurements have used Mie theory despite it strictly only applying to spherical particles since there is no upper size limit and therefore can be applied to the entire cloud probe size range. Applying Mie theory to particle size distributions obtained using the area-equivalent method for determining particle diameters produces larger backscatter coefficients by an average factor of two or more (Mishchenko et al., 1996). Applying more sophisticated methods would reduce the backscatter coefficient uncertainty; however, such methods require knowing not only the size distribution of all single crystal types within the sampled cloud, but also how aggregates of these crystals scatter light. To avoid such complexity, Mie theory is used with an acknowledgment of the method's uncertainty.

Backscatter coefficients depend on particle scattering efficiency at 180 ° (backscatter efficiency), the number concentration, and the particle size (Bohren and Huffman, 1983). The backscatter coefficient equation (Zhang et al., 2015 page 271) is given by:

$$\beta_{ECP} = \sum_{i=1}^{l=\max} Q_{back,i} \eta_i \pi r_i^2, \quad (4)$$

where β_{ECP} is derived backscatter coefficient from external cloud probes (ECP) in units of $\text{km}^{-1} \text{sr}^{-1}$, i is particle size channel number (see Table 1), η_i is number of particles in channel i , $Q_{back,i}$ is backscatter efficiency for channel i , and r_i is area-equivalent particle radius in channel i . For water spheres, πr^2 is the cross-sectional area (A), while for irregular particles such as ice, A is the cross-sectional area imaged by the two-dimensional probes (see the ice crystal image insert in Fig. 1). The cross-sectional area is converted to a diameter (or radius) by determining the sphere that has an equivalent, two-dimensional projected surface area to A . A is modeled as the cross-sectional area of a backscatter equivalent sphere. In either case, A is the particle area directly measured by the cloud imaging probe as the area of shadowed diodes obtained using SODA2 data processing. Backscatter efficiency indicates effectiveness of a particle at scattering in the 180 ° direction with regard to incident light, and is given by:

$$Q_{back} = \frac{Q_{ext} \omega P_{11}(\pi)}{4\pi} \quad (5)$$

where Q_{ext} is extinction efficiency, ω is single-scattering albedo, and $P_{11}(\pi)$ is the scattering phase function at 180 °. While the backscatter efficiency can be related (Zhang et al., 2015 page 271) to the lidar ratio (reciprocal of the backscatter to extinction ratio), the lidar ratio is not used to derive the OID backscatter coefficient (see discussion of Eq. (1)); therefore, the

Formatted: Font: Italic

Formatted: Font: Italic

Formatted: Font: 10 pt

Formatted: Font: 10 pt, Not Bold

Formatted: Font: 10 pt, Not Bold

Formatted: Font: 10 pt, Not Bold

Formatted: Font: Italic, Subscript

Formatted: Font: Italic, Subscript

only important consideration is using the same scattering phase function normalization for both the OID backscatter coefficient calculation and β_{ECR} . In both cases, the phase function (P) integrated from 0 to 180 is given by:

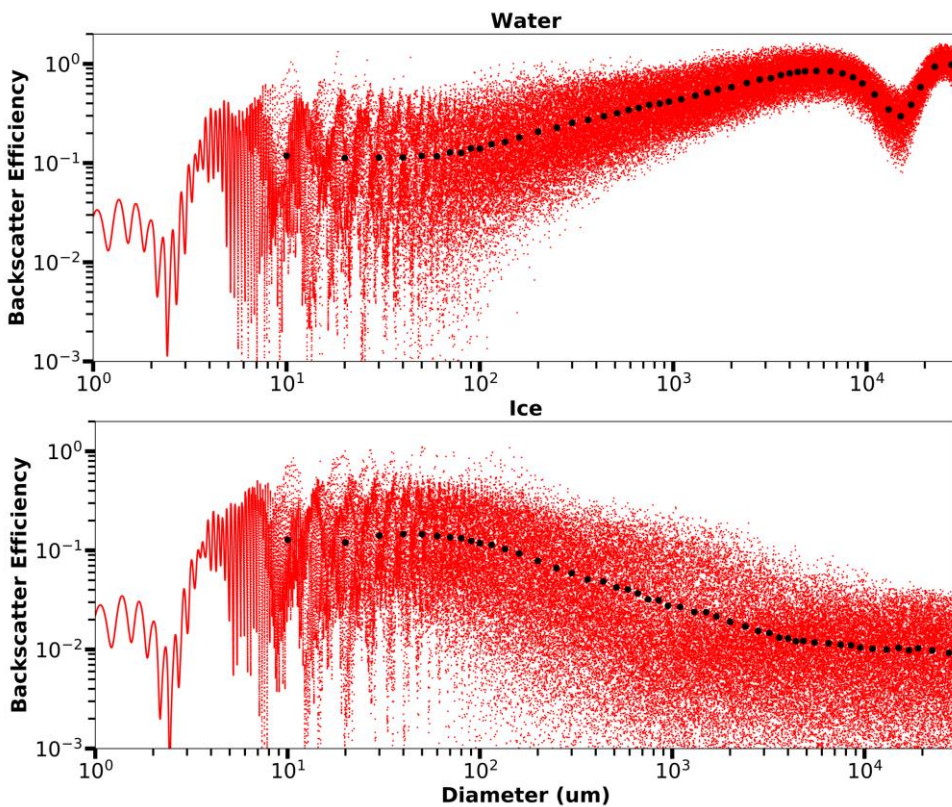
$$\int_0^{180} P(\theta) \cos(\theta) \sin(\theta) d\theta = 4\pi, \quad (5)$$

270 Backscatter efficiency (Fig. 3) is calculated using the Python based software, MiePlot (Laven, 2020), which has a definition (see Graph types/Phase function in MiePlot program's help documentation) of Eq. (5). Backscatter efficiency calculations use 20 °C for the medium temperature, 905 nm for the incident light wavelength, and refractive indices of $1.3263 + 5.6 \times 10^{-7}i$ for water at 20 °C (Kedenburg et al., 2012) and $1.3031 + 5.6 \times 10^{-7}i$ for ice (Warren and Brandt, 2008). The refractive indices depend not only on incident wavelength but also on particle temperature, and therefore, density (Wesely, 1976). However, 275 sensitivity tests using 0 °C and 10 °C water refractive indices show a difference of less than 1 % for particle diameters up to 105 μm. Since water at 4 °C has the highest density (Tanaka et al., 2001), testing both 0 °C and 10 °C provides backscatter efficiency results over a range of densities for water droplets. As ice particle density depends on multiple formation factors other than temperature, the effects of ice particle temperature are less relevant and likely have little impact. Correct utilization of MiePlot for determination of water backscatter efficiency has been confirmed by obtaining results comparable to Fig. 61 of 280 van de Hulst (1981) and Fig. 1 of Lolli et al. (2013).

Backscatter efficiency values are calculated using MiePlot for diameters distributed log-normally between 1 μm and 30 mm. Intervals within the smallest diameter channel (1 μm) are 0.0001 μm and increase to 3 μm intervals in the largest diameter channel (30 mm). Backscatter efficiencies are arithmetically averaged for all particle diameters within each channel (Shishko et al., 2020) in the combined particle size spectrum (Table 1), beginning at 5 μm and ending at 30 mm (Fig. 3). Averaging 285 over channel intervals smooths out rapid changes in backscatter efficiencies with diameter. As a result, the backscatter efficiencies for water and ice are nearly constant (within approximately 10 %) for particle diameters up to 105 μm (the upper limit of size bin 10 in Table 1). Above 105 μm, water has a backscatter efficiency that increases above the isotropic backscatter efficiency (Zhang et al., 2015 page 271) of 0.0796 ($1/(4\pi)$), while ice has a backscatter efficiency that decreases below the isotropic backscatter efficiency indicating depression near the backscattering direction. Therefore, the water to ice difference 290 increases by two orders of magnitude at larger sizes, despite water and ice only having a small difference in the real part of the refractive index. Also, there is a backscatter efficiency dip around the 10 000 μm diameter that is likely due to destructive interference of surface waves (Hovenac and Lock, 1992). For more information about the effects of surface waves on light scattering, see Chýlek et al. (1980). While the backscatter efficiency can be related (Zhang et al., 2015 page 271) to the lidar ratio (reciprocal of the backscatter-to-extinction ratio), the lidar ratio is not used to derive the OID backscatter coefficient (see discussion of Eq. (1)); therefore, the only important consideration is using the same scattering phase function normalization 295

for both the OID backscatter coefficient calculation and β_{ECP} . In both cases, the phase function (P) integrated from 0 to 180 is given by:

$$\int_0^{2\pi} P(\theta) \cos(\theta) \sin(\theta) d\theta = 4\pi. \quad (6)$$



300

Figure 3: Plots showing backscatter efficiencies using Mie theory for spherical water (top) and ice (bottom) particles. The MiePlot software package (Laven 2020) is used to calculate efficiencies for 100 000 particle diameters distributed log-normally between 1 μm and 30 mm (red dots). Intervals between diameters used for the individual backscatter efficiency calculations range from 0.0001 μm at the lowest diameters, to 3 μm at the highest diameters. Black circles are average efficiencies over the combined spectrum channel

widths (see Table 1 for numerical values). A refractive index of $1.3263 + 5.6 \times 10^{-7}i$ is used for water (Kedenburg et al. 2012) and $1.3031 + 5.6 \times 10^{-7}i$ for ice (Warren and Brandt 2008). Scattering is for an air medium at 20 °C and incident light of 905 nm.

Uncertainty in the backscatter coefficient ($\delta\beta_{ECP}$) due to sizing and counting errors is derived using a weighted error propagation in quadrature method (Berendsen, 2011):

$$\delta\beta_{ECP} = \sqrt{\sum_{i=1}^{i=\max} \left(Q_{back_i} Q_i \pi r_i^2 \delta n_i \right)^2 + \left(2 n_i Q_{back_i} Q_i \pi r_i \delta r_i \right)^2}, \quad (76)$$

where δn_i is concentration uncertainty for channel i and δr_i is particle radius uncertainty for channel i . Poisson statistics determine absolute uncertainty in concentration:

$$\delta n_i = n_i * \max_{i=1}^{i=\max} \left(\frac{1}{\sqrt{N_i}} \right), \quad (87)$$

where N_i is counted particle number per channel (Horvath et al., 1990). Another example of applying Poisson statistics to cloud probe analysis can be found in Baumgardner et al. (2014). One half the channel width is used as the particle radius uncertainty, which is a lower bound on the uncertainty. Additional factors could result in a larger uncertainty, such as particles outside the depth of field appearing too large and hence not within the correct size channel (O'Shea et al., 2019) or particles not being randomly oriented within the cloud probe measurement volumes.

The OID is undergoing development and is an immature instrument compared to two-dimensional array probes; hence, an full uncertainty analysis is not available. Conducting a full OID uncertainty analysis is beyond the scope of this paper; instead, the 1 Hz OID backscatter coefficient uncertainty ($\delta\beta_{OID}$) is obtained from the standard deviation of the 5 Hz OID data. The standard deviation includes some natural variability, as the aircraft traverses different cloud conditions, in addition to random uncertainty; hence, the uncertainty is an upper bound. OID and ECP agreement is considered to occur when the measurement difference is less than 3 standard deviations (Berendsen, 2011), which is calculated using:

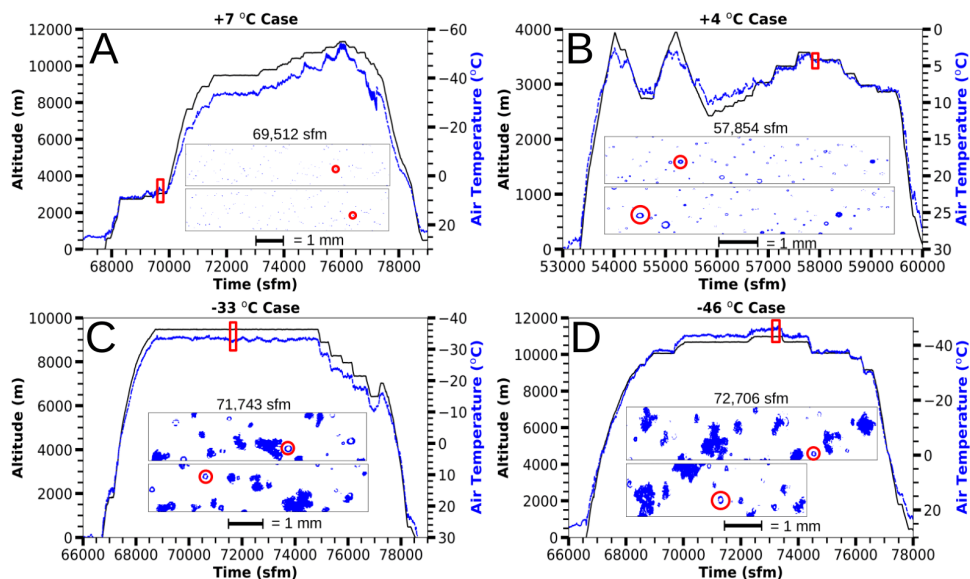
$$\sigma_3 = 3 \sqrt{(\delta\beta_{OID})^2 + (\delta\beta_{ECP})^2}, \quad (98)$$

Thus, a time series plot of the OID and ECP backscatter coefficient difference is useful to determine periods of measurement agreement and disagreement. The third standard deviation is used as a threshold in accordance with the Three Sigma Rule (Pukelsheim, 1994) since the OID is in development and Eq. (98) does not include systematic errors (e.g. systematic due to spherical particle assumptions).

330 OID backscatter coefficients are compared to 1 Hz backscatter coefficients derived from the external cloud probes (2D-S,
 HVPS3) using a case study analysis of four, 60 s, CAPE2015 flight segments, with each segment selected to represent a
 different meteorological condition. The cases (Table 2) are at four different temperatures (+7 °C, +4 °C, -33 °C and -46 °C),
 which provide two warm cloud cases and two cold cloud cases at constant flight heading and altitude (Fig. 4). The warm cases
 (Fig. 4A and 4B) are at approximately 3 km altitude over the ocean, just off the east coast of Florida. The warm cloud cases
 335 have small liquid droplets that are not observable on radar (Table 2). The +7 °C case occurred early in the flight while waiting
 for air traffic control climb permission and sampled developing cumulus clouds with very few drizzle sized droplets. Similarly,
 the +4 °C case also occurred before ascending to sample cirrus clouds but sampled mature cumulus clouds with drizzle sized
 droplets. As expected for these warm temperatures, the 2D-S images (Fig. 4A and 4B) show small spherical droplets. The
 cold cases (Fig. 4C and 4D) occurred above 9 km in cirrus cloud anvils. Melbourne radar observations have cloud bases at
 340 1000 m MSL (Table 2) for both cold cloud cases, which indicates sampling is above the stratus rain region, instead of the
 cirrus anvil outflow region of the storm. Cloud tops are located at 11 000 m MSL for the -33 °C case, and 15 000 m MSL for
 the -46 °C case. The 2D-S images show mostly irregularly shaped particles indicative of ice crystals. The -33 °C case is warmer
 than the homogeneous freezing temperature (-38 °C) and has some small particles appearing round, which could be liquid, or
 frozen, cloud droplets. Therefore, the -33 °C case may contain liquid droplets; however, the -46 °C case, being much colder
 345 than the homogeneous freezing temperature, contains only ice particles.

Table 2. Table listing details of the 60 s segments for the Florida, CAPE2015 case studies. Numbers in parentheses in the Flight Row indicate the first (1) or second (2) flight conducted on the given day. The cloud bases and cloud tops were derived from the National Weather Service Melbourne radar. “Not Available” indicates insufficient radar reflectivity to detect the cloud. The TWC Row gives the average and standard deviation of the total water content (TWC) measured by the Nevzorov probe.

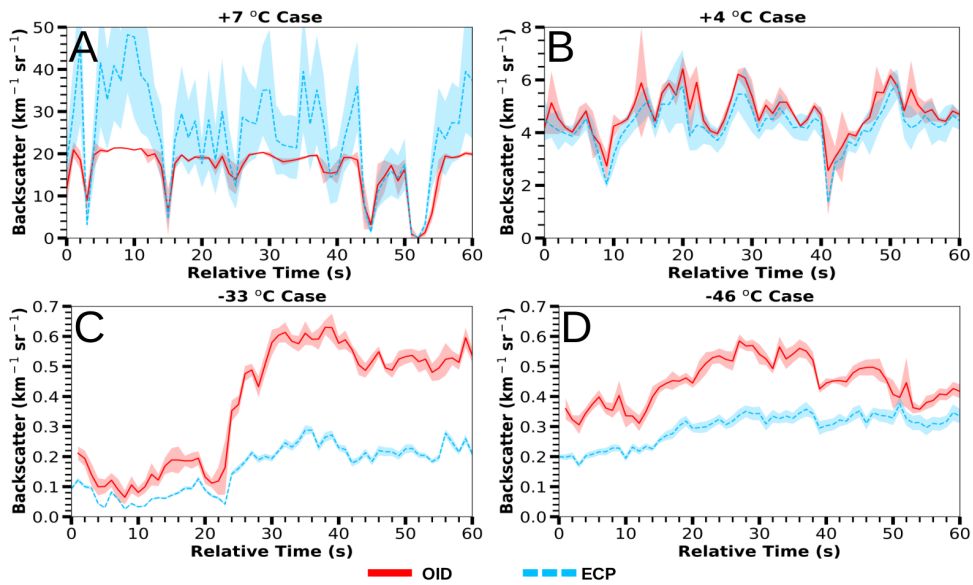
Case	+7 °C	+4 °C	-33 °C	-46 °C
Flight	02 August 2015	01 August 2015 (1)	31 July 2015	01 August 2015 (2)
Time	69 510 to 69 570 sfm	57 850 to 57 910 sfm	71 710 to 71 770 sfm	72 700 to 72 760 sfm
Altitude	3043 m ± 17.2 m	3440 m ± 3.3 m	9479 m ± 3.8 m	10 971 m ± 6.8 m
Temp	6.7 °C ± 0.42 °C	4.3 °C ± 0.11 °C	-33.0 °C ± 0.12 °C	-45.9 °C ± 0.27 °C
Latitude	28.446° to 28.497° N	28.725° to 28.761° N	28.326° to 28.402° N	28.408° to 28.480° N
Longitude	80.4916° to 80.4859° W	80.5915° to 80.5577° W	80.445° to 80.4373° W	80.714° to 80.686° W
Cloud Base	Not Available	Not Available	1000 m	1000 m
Cloud Top	Not Available	Not Available	11 000 m	15 000 m
TWC	1.2 g m⁻³ ± 0.47 g m⁻³	0.5 g m⁻³ ± 0.08 g m⁻³	0.1 g m⁻³ ± 0.05 g m⁻³	0.1 g m⁻³ ± 0.02 g m⁻³



350 Figure 4: Plots showing time series in seconds from midnight (sfm) Coordinated Universal Time (UTC) of altitude (solid, black) and
 355 air temperature (dashed, blue) for four analyzed flights. The red rectangles enclose the 60 s case study segments associated with each
 flight. Details for each segment are given in Table 2. Center panels contain representative 2D-S images from within the analyzed
 cases. Red circles within the 2D-S images show examples of particles with Poisson spots that are discussed in the text. The upper,
 red circle marked particle for the -33 °C case is approximately 180 μm in diameter.

6 Results

Cloud probe images (2D-S and HVPS3) are processed and combined to create a 1 Hz ECP data set, which is used to derive
 backscatter coefficients (Eq. (4)) and uncertainty (Eq. (67)). The absolute uncertainty is greatest for the +7 °C case (Fig. 5A)
 because the backscatter coefficient magnitude is 10 times the +4 °C case and 100 times the cold temperature cases. Figure 6A
 360 shows that OID and ECP backscatter coefficients agree (within 3 standard deviations) at all times for the +7 °C case. The
 greatest difference occurs at 10 s, where the ECP backscatter coefficient is over twice the OID's. Overall, the +7 °C case ECP
 backscatter coefficient is typically higher than the OID. The +7 °C water cloud contains high concentrations (Fig. 7A) of small
 droplets (i.e. 20 μm mean diameter), with the majority of the calculated backscatter due to droplets between 5 μm and 30 μm
 (Fig. 7D).



365 Figure 5: Plots showing 1 Hz time series for the four case study segments (Table 2). Note the differing backscatter coefficient scales
 | for the warm cloud cases. The external cloud probes (ECP) shadowed range is the measurement uncertainty determined from Eq.
 370 (67) and represents 1 standard deviation. The Optical Ice Detector (OID) shadowed range is 1 Hz data representing 1 standard
 deviation computed of the 5 Hz measurements. The ECP backscatter coefficient is obtained from particle data processed with the
 area-equivalent method.

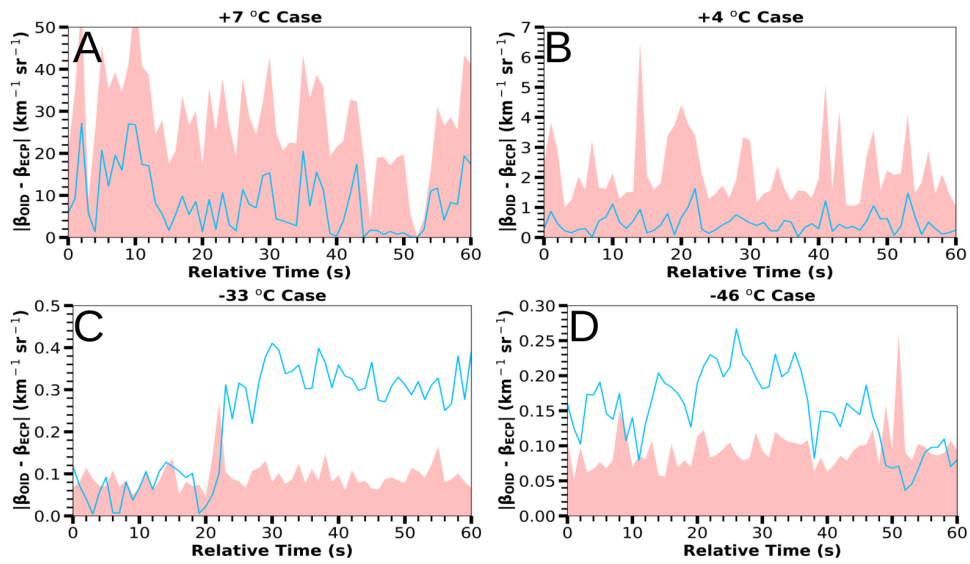
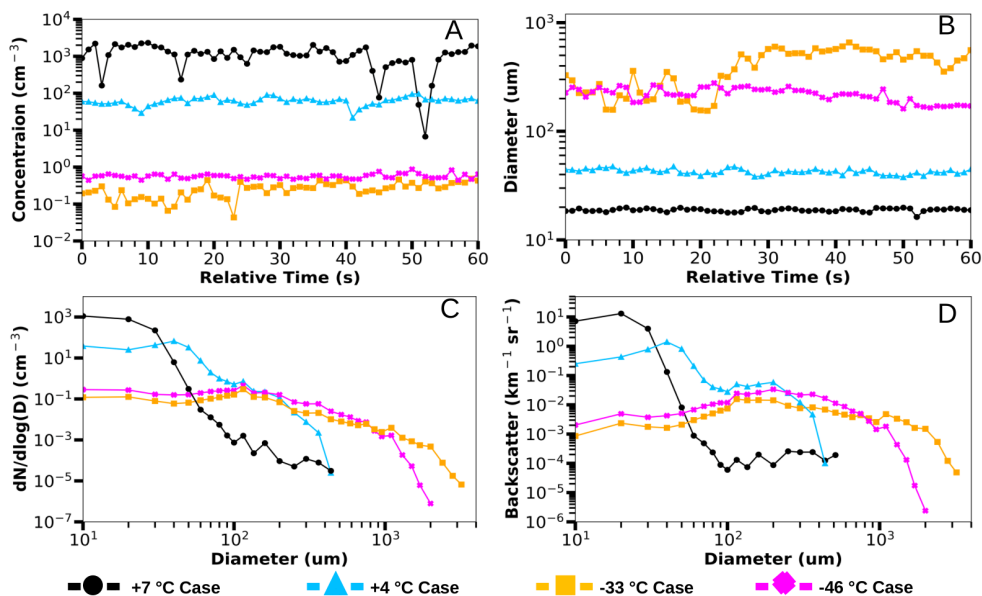


Figure 6: Plots showing 1 Hz time series of the absolute difference (blue line) between the Optical Ice Detector (OID) and external cloud probes (ECP) backscatter coefficients for the four case study segments (Table 2). The shadowed region top represents 3 standard deviations of OID and ECP backscatter coefficients, determined using Eq. (89).



375 Figure 7: Plots showing measurements within the 60 s segments of four analyzed cases (Table 2). The upper left plot (A) is total
 380 number concentration measured by the external cloud probes (ECP), specifically the Two-Dimensional Stereo (2D-S) and High-
 Volume Precipitation Spectrometer Version Three (HVPS3) probes (Table 1). The upper right plot (B) is mean particle diameter
 measured by the ECP. The lower left plot (C) is a log-log plot of number density function vs. diameter measured by the ECP. The
 lower right plot (D) shows ECP backscatter coefficient versus the particle diameter. The y-axis of plot D is not normalized by size
 channel width; however, neighboring channels typically have simple widths (see Table 1 for details). The ECP backscatter coefficient
 is obtained from particle data processed with the area-equivalent method.

Figure 5B shows that the +4 °C case has ECP backscatter coefficients that vary with the OID backscatter coefficient with the
 smallest difference between the two of any of the four cases; however, the ECP backscatter coefficient is consistently lower.

385 The OID and ECP backscatter coefficients agree within uncertainties (Fig. 6B) throughout the entire period. The difference
 changes little because the particle concentration (Fig. 7A) and mean diameter (Fig. 7B) are approximately constant. Compared
 to the +7 °C case, the concentration is an order of magnitude less, and the mean diameter is greater, being approximately 50
 μm instead of 20 μm. Many of the observed drops are from 30 μm to 70 μm (Fig. 7C), with the particle size distribution
 peaking at approximately 50 μm. Particles from 100 to 300 μm diameter are 100 times more plentiful than in the +7 °C case.

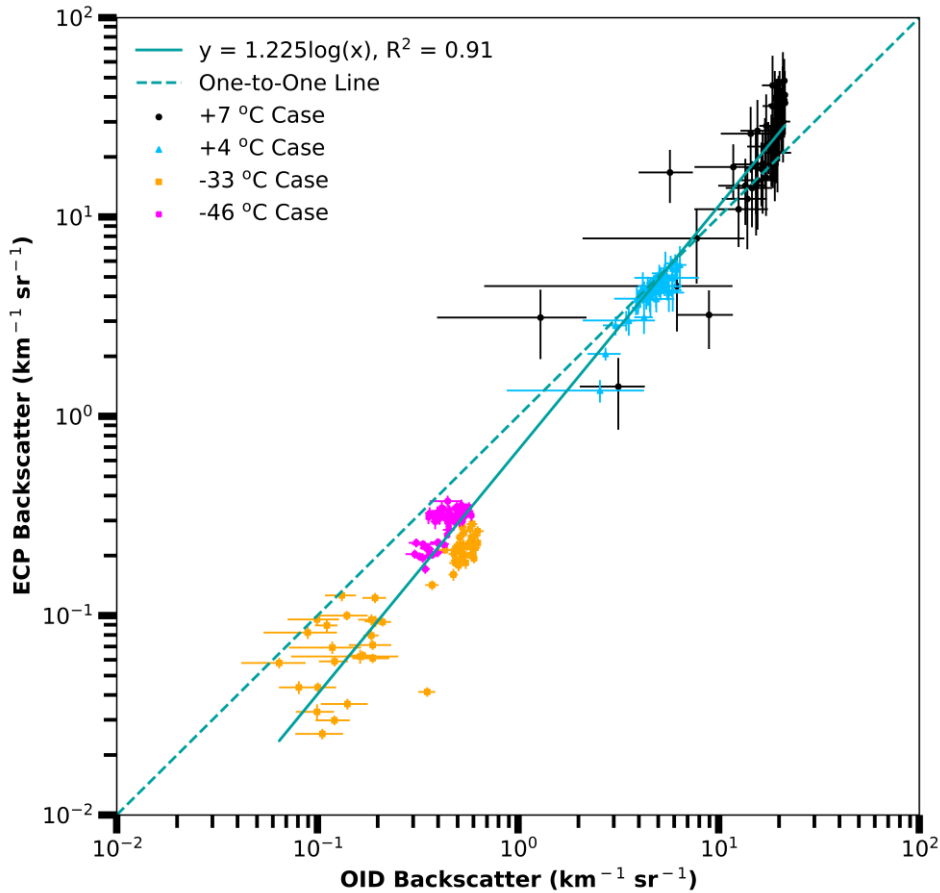
390 For the -33 °C case (Fig. 5C and Fig. 6C), the OID and ECP backscatter coefficients agree for the first 20 s. Similarly to the
 +4 °C case, the OID backscatter coefficient is consistently higher than that ECP backscatter coefficient. However, around 24
 s there is a sudden change in backscatter coefficient agreement that corresponds to an increase in mean particle size and

concentration. Figure 7A shows particle concentration increasing from approximately 0.1 cm^{-3} to 0.5 cm^{-3} , and Fig. 7B shows the mean particle diameter increasing from $200 \mu\text{m}$ to slightly over $600 \mu\text{m}$ around the 24 s change. While both the OID and ECP backscatter coefficients increase at this time, the magnitude of the OID coefficient is significantly larger. For the last 30 s, the OID backscatter coefficient is 2 to 3 times the ECP backscatter coefficient, with disagreement exceeding 3 standard deviations. The particle size spectrum (Fig. 7C) and backscatter coefficient distribution (Fig. 7D) are much broader and flatter than in the warm cloud cases. Figure 7D indicates the majority of the backscatter coefficient is due to particles from 100 to $2000 \mu\text{m}$ in diameter.

The $-46 \text{ }^\circ\text{C}$ case (Fig. 5D) also shows significant differences between the backscatter coefficients. For the first 48 s, the backscatter coefficient is in disagreement (Fig. 6D), with the ECP backscatter coefficient being consistently less than the OID's. However, both backscatter coefficients exhibit the same temporal trends. For the last 12 s of the $-46 \text{ }^\circ\text{C}$ case, the backscatter coefficients are mostly in agreement. As Fig. 7B shows, the mean particle diameter is nearly constant at approximately $200 \mu\text{m}$, with a decrease at the end of the period. Both the $-46 \text{ }^\circ\text{C}$ case and $-33 \text{ }^\circ\text{C}$ case show 2D-S images with large, irregularly shaped particles (Fig. 4D and 4C, respectively). The $-46 \text{ }^\circ\text{C}$ case has small particles that are irregular in shape, while the $-33 \text{ }^\circ\text{C}$ case contains small particles that appear round.

There is a strong correlation (0.91) between β_{ECP} versus β_{OID} with the linear fit line being less than the one-to-one line over most of the data range (Fig. 8). The $-33 \text{ }^\circ\text{C}$ case has higher OID backscatter coefficients compared to similar ECP backscatter coefficients from the $-46 \text{ }^\circ\text{C}$ case. This difference at an ECP backscatter of $0.2 \text{ km}^{-1} \text{ sr}^{-1}$ (Fig. 8) is far greater than the calculated uncertainty, which indicates an unaccounted source of systematic error. Figure 9 shows the Nevzorov probe TWC and backscatter coefficient have a power-law relationship. The Backscatter-TWC relationship indicates the OID instrument is sensitive to TWC over a wide range of cloud conditions, including clouds with TWC as low as 0.02 g m^{-3} . The OID's sensitivity to small values of TWC (plot insert in Fig. 9) in optically thin ice clouds is an important characteristic for deployment on high flying aircraft. The OID has less scatter than the ECP for the Backscatter-TWC plots, likely due to the larger sample volume of the OID. Figure 10 includes all observations greater than $0 \text{ }^\circ\text{C}$ and less than $-20 \text{ }^\circ\text{C}$ for the four case study flights. Data between $0 \text{ }^\circ\text{C}$ and $20 \text{ }^\circ\text{C}$ are omitted to exclude strongly mixed-phase cloud conditions as the ECP data processing, and thus calculated backscatter coefficients, do not account for ice and liquid water backscatter efficiencies simultaneously. Including the whole flights, there is much more scatter between the ECP and OID backscatter coefficients (Fig. 10) than for the four 60 s flight segments (Fig. 8). Similar to the flight segment results in Fig. 8, the trend over the whole flights (Fig. 10) indicates the ECP backscatter coefficients are lower than the OID coefficients. However, there is far more scatter between the OID backscatter coefficient and the Nevzorov probe TWC for cold cases (Fig. 10) (0.43) than warm cases (0.69) than is seen in the flight segments (Fig. 9). There appears to be two regimes in the OID Backscatter-TWC plot (Fig. 10); however, the regression fits for water and ice conditions does a poor job of picking up on the two regimes due to the large amount of scatter in the

425 Hz data. Long time averages and restricting the aircraft sampling to level legs (as done for Fig. 8 and Fig. 9) seem necessary to obtain a robust relationship.



430 Figure 8: The Optical Ice Detector (OID) versus external cloud probes (ECP) backscatter coefficients for four analyzed cases (Table 2). Each point is colored by case (see legend) and represents 1 s of data (Fig. 5) with bars indicating uncertainty. The least square fit is given by the solid line (see equation in legend). The dashed line is a one-to-one correspondence for the ECP and OID data. The ECP backscatter coefficient is obtained using image data processed with the area-equivalent method for all cases.

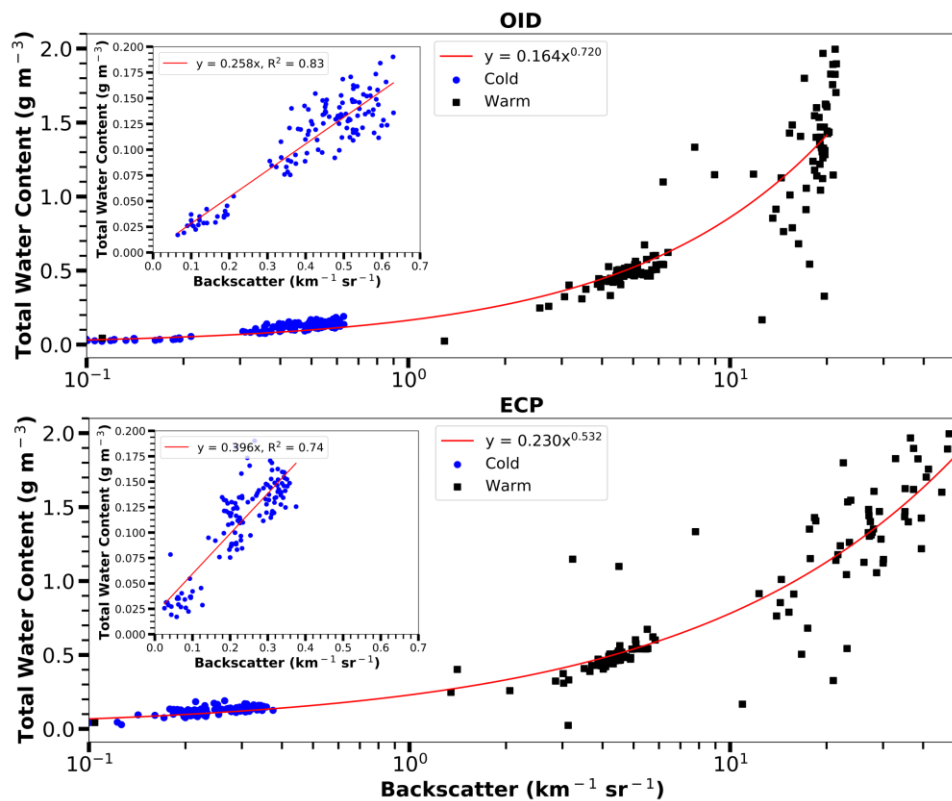
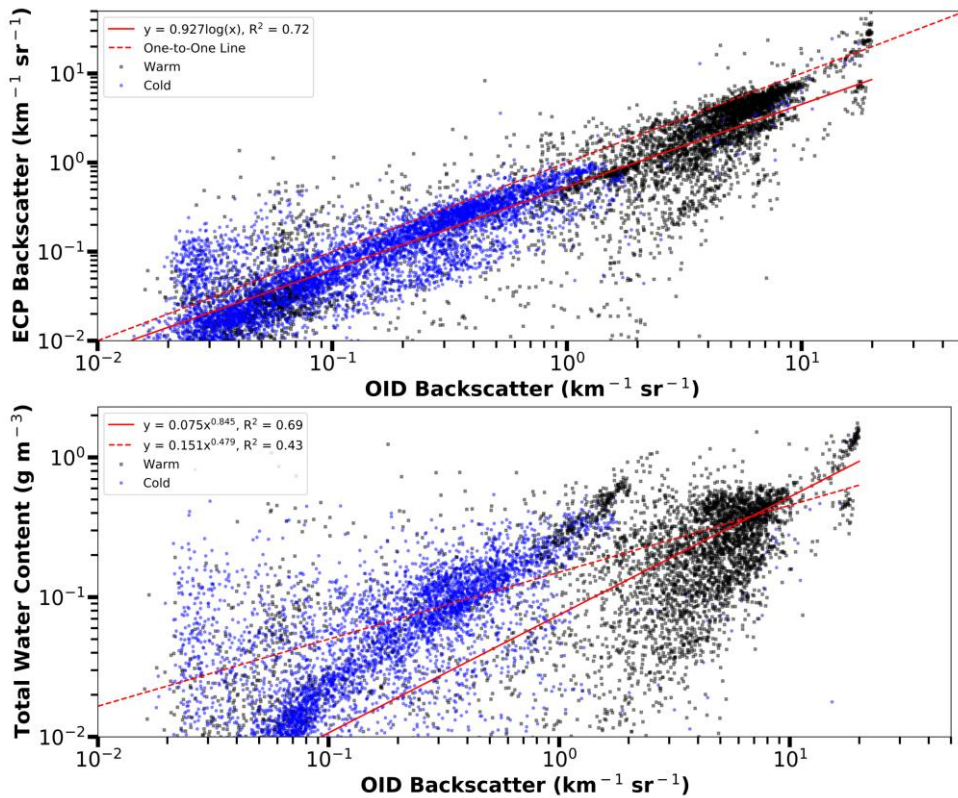


Figure 9: Plots showing Nevzorov probe total water content (TWC) versus Optical Ice Detector (OID) backscatter coefficients (top) and external cloud probes (ECP) backscatter coefficients (bottom) with a logarithmic x-axis. Backscatter coefficients are separated by warm (+7 °C and +4 °C) cases (square, black) and cold (-33 °C and -46 °C) cases (round, blue) (Table 2). Insets in the top-left corners show further detail of Nevzorov probe TWC versus respective backscatter coefficients for the -33 °C and -46 °C cases. Each point represents 1 s of Nevzorov, OID, and ECP data. The ECP backscatter coefficient is obtained using image data processed with the area-equivalent method for all cases.

435



440 Figure 10: The external cloud probes (ECP) backscatter coefficients versus Optical Ice Detector (OID) backscatter coefficients (top)
 and Nevzorov probe total water contents (TWC) versus OID backscatter coefficients (bottom) for all times within the four flights
 (Table 2) that contain the four temperature cases. The 1 Hz data is grouped by cold (round, blue) and warm (square, black)
 environments. Data are excluded when temperatures are between 0 °C and -20 °C. Liquid scattering efficiencies are used for
 temperatures greater than 0 °C and ice scattering efficiencies used for temperatures below -20 °C. OID data has a 20 km⁻¹ sr⁻¹ limit
 445 to avoid times where observations are above the OID's detection limit. The lower plot's solid red line indicates the fit equation for
 the warm data, while the dashed red line indicates the fit equation for the cold data. The ECP backscatter coefficient is obtained
 using image data processed with the area-equivalent method for all cases.

7 Discussion

The +7 °C case has the largest backscatter coefficient and the only case where ECP derived backscatter coefficient is larger than the OID measurement. This is due to high droplet concentrations saturating the OID above its upper response limit of 22

450 $\text{km}^{-1} \text{sr}^{-1}$. The OID's limited dynamic range in a dense cloud of small water droplets is not a serious liability since sensing ice particle concentration is the main measurement objective and warm water clouds do not produce ice particle icing. Furthermore, environments containing severe conditions would not require such large concentrations to be flagged by the OID. Note that the cumulus cloud sampled in the +7 °C case has a large water content (Table 2), and the backscatter coefficients to water content comparisons indicates the OID is able to measure over 1.0 g m^{-3} before saturation (Fig. 9).

455 Excluding the +7 °C case, ECP backscatter coefficients are consistently lower than those measured by the OID (Fig. 5B, 5C, 5D, and summarized in Fig. 8), which suggests a possible systematic error. The most likely systematic error relates to using Mie Theory and assuming cloud particles are spherical ice scatters. However, previous studies (Cairo et al., 2011) and theory (Mishchenko et al., 1996) would suggest that the ECP would be larger than the OID by a factor of two or more, while the results indicate lower ECP backscatter coefficients. There are several other possible sources of error that could be produce a
460 bias. Two-dimensional cloud imaging probes (Fig. 1) have several factors that can bias sizing and counting of particles. Particle sizing uses the area-equivalent method for all cases, which is appropriate for liquid droplets; however, this may not be the best sizing method to obtain the equivalent diameter for ice particles using Mie backscattering. The fast-circle method results in larger diameter ice particles and larger calculated backscatter coefficients from the ECP (see supplemental material). Particle diameters less than $100 \mu\text{m}$ are difficult for the 2D-S to measure due to the small depth of field, which could result in lower
465 backscatter coefficients than those measured by the OID. However, the 2D-S LWC is larger than the Nevzorov probe LWC measurements for the CAPE2015 field project. Since the OID backscatter coefficients are more reflective of the 2D-S LWC, the Nevzorov LWC may be low due to an inability to fully capture and/or evaporate the largest water droplets. OID measurements may have a bias despite no indication of malfunctions. Another possibility is the OID receiving backscatter from particles too small to be measured by the two-dimensional cloud imaging probes; however, Fig. 7D indicates low
470 backscatter coefficient contribution from the smallest sized channels. Additional measurements with carefully calibrated instruments are necessary to resolve the discrepancy between the OID and ECP for ice containing clouds; however, the OID and ECP measurements do agree within the calculated uncertainties for liquid clouds (Fig. 6).

There are other possible errors which affect both liquid water and ice water measurements. A bias in concentration could be due to an error in air speed used for determining the sampling volume (Eq. (2)). However, the aircraft's air speed error is
475 estimated to be between 1 % and 3 % based on measurement comparisons, which is too small to account for the bias. Another error source may be coupling probes to the ambient airflow environment. Air flow deviations around instrument pylons can influence particle concentrations even when probes are placed well in front of the wing's leading edge (Baumgardner, 1984). Pressure changes and streamlines alter particle flow around both wings and instruments, with small particles being most heavily affected (Spanu et al., 2020). This phenomenon results in lower measured concentrations of small particles compared to actual
480 values in undisturbed air. Another possible concentration bias is in processing asynchronous 2D probe images to calculate the

sample area. Errors in determining sample area are size dependent and larger for small particles (Korolev et al., 2013a); therefore, such errors are more important for the +7 °C and +4 °C cases.

485 A sample area error affects particle concentration, which has the larger uncertainty contribution. The +4 °C case (Fig. 9) has an average contribution to uncertainty (Eq. (67)) of $0.4 \text{ km}^{-1} \text{ sr}^{-1}$ from particle concentration, while only $0.045 \text{ km}^{-1} \text{ sr}^{-1}$ from particle size. Similarly, the -46 °C case (Fig. 5D) has uncertainty of $0.24 \text{ km}^{-1} \text{ sr}^{-1}$ from concentration and only $0.03 \text{ km}^{-1} \text{ sr}^{-1}$ from particle size. Hence, the primary contributor to total uncertainty is fluctuation in concentration. Concentration uncertainty can be reduced by averaging over longer time periods; however, systematic differences between the OID and ECP would not change.

490 Bias in calculated sample volume cannot explain the change in agreement between OID and ECP backscatter coefficients that occurred between 20 s and 30 s for the -33 °C case (Fig. 4C, 5C, and 6C), or the overall disagreement in the -46 °C case. Onset of the -33 °C case discrepancy could be due to a change in the particle size spectrum (Fig. 11). Manually reviewing 2D-S and HVPS3 images indicates an increased number of larger particles between the first and last 20 s of the -33 °C case. This change in particle size distribution is believable since there is a smooth decrease in concentration with increasing size. Furthermore, the 2D-S/HVPS3 particle size distribution is similar to the Two Dimensional Cloud (2D-C) probe (Fig. 2) distribution (Fig. 495 11), and performance checks conducted by the manufacturers after CAPE2015 found no measurement issues. Additionally, a manufacturer's review of the OID indicated no measurement issues. Therefore, both the OID and ECP measurements seem to be valid for the -33 °C case.

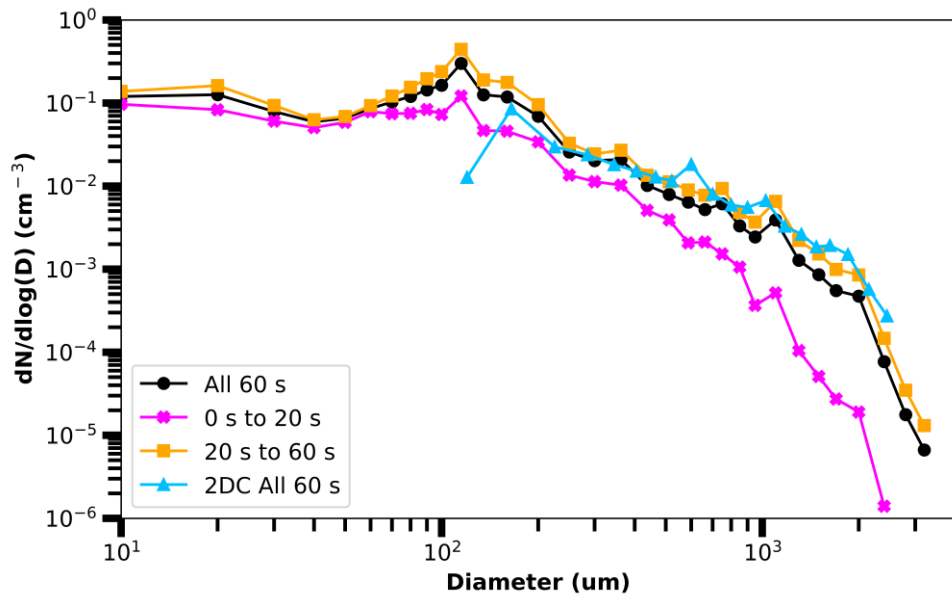
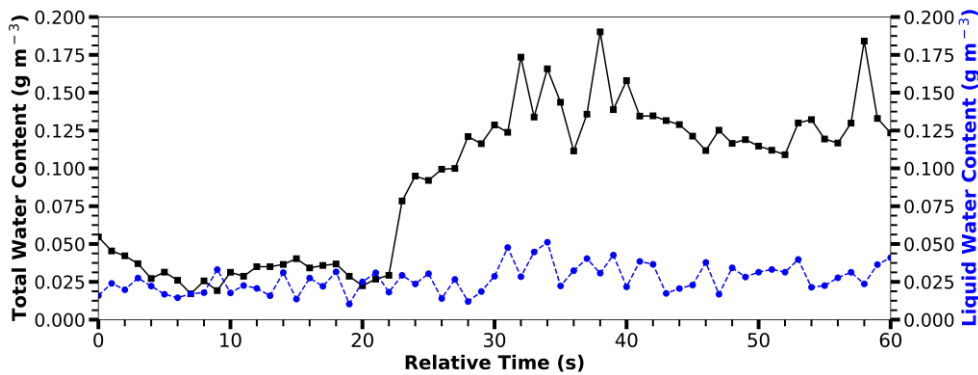


Figure 11: The size spectrum normalized by bin width measured by the external cloud probes (ECP) for the $-33\text{ }^{\circ}\text{C}$ case (Table 2). The spectrum of the entire 60 s case (round, black) has been separated according to times of more (cross, magenta) and less (square, orange) agreement between ECP and Optical Ice Detector (OID) backscatter coefficients. Also given is the 2D-C spectrum (triangle, blue) obtained using the fast-circle and full particle reconstruction processing methods. The 2D-S and HVPS3 diameters for the ECP combine spectrum are obtained using image data processed with the area-equivalent method.

A notable difference between the $-33\text{ }^{\circ}\text{C}$ and $-46\text{ }^{\circ}\text{C}$ cases is LWC measured by the Nevzorov probe (Fig. 12). The Nevzorov probe measurement for the $-46\text{ }^{\circ}\text{C}$ case has near zero LWC, as expected for a temperature below the threshold temperature for homogeneous freezing. However, the Nevzorov probe measurement indicates a mixed phase cloud for the $-33\text{ }^{\circ}\text{C}$ case. While there is LWC data shown for the entire $-33\text{ }^{\circ}\text{C}$ case, LWC increases from an average of 0.022 g m^{-3} to 0.027 g m^{-3} (~30 % of the TWC) just after disagreement between backscatter coefficients begins. An abrupt increase in TWC also occurs at this time, which should result in both the OID and ECP backscatter coefficients increasing; however, while the increase does occur simultaneously (Fig. 5C), the discrepancy between backscatter coefficients after the increase is of interest. While the increase of LWC is small, the additional LWC would increase the difference between backscatter coefficients since ECP processing assumes an ice backscatter efficiency, which is lower than water backscatter efficiency (Fig. 4). Furthermore, the increase in LWC likely corresponds to the particle size distribution increase in the 100 to 200 μm range (Fig. 11), which has a high contribution to the overall backscatter coefficient (Fig. 7D). It should be noted that while the Nevzorov probe has a collection

515 efficiency of nearly 1 for droplets with a diameter less than 100 μm (Korolev et al., 1998), collection efficiency is approximately 0.5 for clouds with a mean particle volume diameter of 150 to 200 μm (Biter et al., 1987). During the disagreement period, there are significantly more particles with diameters from 150 to 200 μm (Fig. 11), which would require a greater, and not readily available, correction to Nevzorov probe LWC measurements.



520 **Figure 12: Nevzorov probe measured total water content (TWC) (solid, square black) and liquid water content (LWC) (dashed, round blue) for the -33 °C case (Table 2). Each point represents 1 s of Nevzorov data. The average LWC is $0.022 \text{ g m}^{-3} \pm 0.009 \text{ g m}^{-3}$ and the average TWC is $0.032 \text{ g m}^{-3} \pm 0.008 \text{ g m}^{-3}$ during times of Optical Ice Detector (OID) and external cloud probe (ECP) backscatter coefficient agreement (0 s to 20 s). The average LWC is $0.027 \text{ g m}^{-3} \pm 0.009 \text{ g m}^{-3}$ and the average TWC is $0.092 \text{ g m}^{-3} \pm 0.05 \text{ g m}^{-3}$ during times of OID and ECP backscatter coefficient disagreement (30 s to 60 s).**

525 Even at temperatures as low as -33 °C, supercooled liquid water droplets can still exist (Rosenfeld and Woodley, 2000). Supercooled liquid water droplets have even been observed by the same OID at temperatures as low as -30 °C in Anderson and Ray (2019). Similarly to Anderson and Ray (2019), such supercooled liquid water droplets are evident, but not proven, by the round particles seen in 2D-S images taken at the LWC measurement peak (Fig. 4C). Additionally, the Rosemount Icing Detector (Fig. 2) rod frequency (not shown) indicates the presence of LWC. The authors speculate that the presence of supercooled liquid water droplets in the -33 °C case results in larger OID backscatter coefficients due to higher (see Q Ratios in Table 1) liquid water backscatter efficiency (Fig. 3). Calculating ECP backscatter coefficients using liquid water scattering efficiencies for particles less than 500 μm and ice scattering efficiencies for particles larger than 500 μm , results in ECP/OID agreement for the -33 °C case, and would eliminate the systematic difference at ECP backscatter coefficient of $0.2 \text{ km}^{-1} \text{ sr}^{-1}$ in Fig. 8. Accounting for mixed phase conditions in ECP backscatter coefficients would require a methodology able to simultaneously utilize a particle size spectrum for both liquid water and ice, which is beyond the scope of this study. The authors would like to note that mixed phase clouds are only one possibility, and further analysis is required.

While each of the previously mentioned sources of error increase uncertainty within the backscatter coefficient comparisons and should be acknowledged, their contributions are small relative to the assumption made of particles either being water or ice. Incorrect phase assumptions when determining the backscatter efficiencies used in calculating backscatter coefficients can have significant impact on the results due to large differences in efficiencies between ice and water, particularly for particles over 140 μm in diameter (see Table 1). At a diameter of 1000 μm , incorrectly assuming water over ice (or vice versa) would impact the backscatter efficiency (and thus the backscatter coefficient) by 1500 %. This could be solved via testing in a closed system where particle phases can be known with certainty.

For ice particles specifically, the most significant uncertainty is likely the spherical particles assumption of Mie Theory and the corresponding processing method used to obtain the size of particles; i.e. area-equivalent (figures presented herein) versus the fast-circle method (figures presented in supplemental material). This is made evident in Fig. 10, where there is significantly less correlation between the OID results and the Nevzorov TWC for the cold cases as opposed to the warm cases. The area-equivalent method is best for spherical droplets since the imaging probes directly measure area; however, the best processing method for ice particles is not clear as a sphere is required that equivalently backscatters light, which likely is not an area equivalent sphere obtained from one viewing angle.

8 Conclusions

A backscatter coefficient comparison is conducted for both warm and cold cloud conditions using an in-situ Lidar (OID) and observations from externally mounted cloud particle probes (ECP). ECP backscatter coefficients are calculated using combined 2D-S and HVPS3 data over the 5 to 30 000 μm size range. ECP derived backscatter coefficients are consistently lower than OID measurements for the +4 $^{\circ}\text{C}$, -33 $^{\circ}\text{C}$, and -46 $^{\circ}\text{C}$ cases, suggesting a systematic bias in either or both data sets (Fig. 5). However, the ECP derived backscatter coefficient is higher than OID measurement for the +7 $^{\circ}\text{C}$ case due to OID saturation. In the +7 $^{\circ}\text{C}$ and +4 $^{\circ}\text{C}$ cases, the particles that primarily contribute to the backscatter coefficient are in the 5 to 50 μm diameter range, while in the -33 $^{\circ}\text{C}$, and -46 $^{\circ}\text{C}$ cases, the particles that contribute the most are in the 200 to 3000 μm diameter range (Fig. 7D). ECP backscatter coefficients are less than 3 standard deviations from OID measurements, indicating agreement for the +7 $^{\circ}\text{C}$ case and +4 $^{\circ}\text{C}$ cases (Fig. 6). However, there is disagreement in the majority of the -46 $^{\circ}\text{C}$ case. The -33 $^{\circ}\text{C}$ case has disagreement for 36 s out of 60 s, which is possibly due to using ice scattering efficiencies for all particles when small particles are potentially liquid. All case comparisons show qualitatively that backscatter coefficients are a suitable proxy for LWC and IWC as low as 0.02 g m^{-3} (Fig. 9). A comparison between OID and ECP backscatter coefficients to Nevzorov probe TWC for all times during four CAPE2015 flights (Fig. 10) has a correlation of 0.69 for warm cases, but only 0.43 for cold cases. Considering the measurement uncertainties, the case study analysis, and overall flight comparison, the OID is a useful tool for detecting dangerous ice particle icing conditions, even at low concentrations.

The CAPE2015 field project analysis could be expanded to include additional field projects. Additionally, future work could include both the 905 nm and 1550 nm OID wavelengths. Using both wavelengths would allow two parameters of cloud particle size distributions to be determined, helping to obtain a TWC. Additionally, OID polarization measurements could distinguish the liquid/ice fraction of clouds (Yang et al., 2003). New instrumentation, such as the Particle Habit Imaging and Polar Scattering (PHIPS) probe (Schön et al., 2011) deployed during the CapeEx19 Florida field project, would be very useful in determining the fraction of liquid water in mixed phase clouds. Quantifying the liquid water fraction of mixed phase clouds would allow for creation of both liquid and ice 1 Hz particle size distributions, so liquid and ice scattering efficiencies could simultaneously be used to obtain the backscattering coefficient. PHIPS data would also aid in the identification of ice particle habits. Knowing the ice particle habits would allow for more accurate scattering calculations to be utilized (Yang et al., 2005).

Code Availability

ADPAA software used to process the raw data is freely available from a software repository (Delene et al., 2020). The SODA2 software used for image probes processing is from an open software repository (Bansemer, 2020). Specialized software used in the paper's analysis is available in a publicly accessible repository (Wagner and Delene, 2020b). Software processing configuration details are documented in a work-flow script entitled "oid_analysis_workflow" (Wagner, 2020). The work-flow script contains execution calls to ADPAA modules used to process and analyze the paper's data set. Whereas ADPAA processes data from many field projects, the work-flow script applies only to this paper's analysis. The MiePlot software package (Laven, 2020) used to calculate backscatter efficiencies is readily available online.

Data Availability

The paper's data set is freely accessible online through the Chester Fritz Library's data collection (Wagner and Delene, 2020a). Archived data consists of 1 Hz data from four Florida flights in 2015. Data set measurements include the Two-Dimensional Stereo probe (2D-S), High-Volume Precipitation Spectrometer Version Three (HVPS3) probe, Nevzorov probe and Optical Ice Detector (OID). 2D-S and HVPS3 spectrum are combined to create a single particle size distribution spanning both probe size ranges. Backscatter coefficients are computed from this composite size spectrum. Atmospheric variables such as pressure, temperature, dew point temperature, and wind velocity are also included in the data archive.

Author Contribution

First author, Shawn Wagner, conducted data analysis and led manuscript writing. Co-author David Delene developed the project's design and scope. David Delene headed external cloud probe analysis. Both authors reviewed and edited the manuscript.

595 **Competing Interests**

The authors declare that they have no conflict of interest.

Disclaimer

Opinions expressed in this paper are those of the authors and do not reflect opinions of others who aided in this research.

Acknowledgements

600 We are grateful to the National Center for Atmospheric Research (NCAR), and the lead developer Aaron Bansemer, for making available the SODA2 software used in this research. Thank you to NASA for use of 2D-S, HVPS3, and Nevzorov probe instruments during the CAPE2015 field project. Kaare Anderson provided processed OID data for CAPE2015. The CAPE2015 aircraft flight crew members included flight engineers Jamie Ekness (Graduate Student), Krysztof Markowicz (Graduate Student) and Nicholas Gapp (Undergraduate Student), flight scientist David Delene, and research pilots Wayne Schindler and
605 Jonathan Sepulveda. Thanks to Andrew Detwiler for providing comments on draft versions of the paper. Thank you to Neil Nowatzki of University of North Dakota's Academic Support Services for help with creation of Fig. 1. Additionally, we acknowledge anonymous reviewers and thank them for the time they devoted to reviewing the manuscript. Funding to conduct data analysis was provided by the North Dakota Department of Commerce (University fund number UND0021191).

References

610 Airworthiness Directives; The Boeing Company Airplanes: <https://www.federalregister.gov/documents/2013/11/27/2013-28638/airworthiness-directives-the-boeing-company-airplanes>, last access: 21 January 2020.

Anderson, K. J. and Ray, M. D.: SLD and Ice Crystal Discrimination with the Optical Ice Detector, SAE International, Warrendale, PA, <https://doi.org/10.4271/2019-01-1934>, 2019.

Airworthiness Directives; The Boeing Company Airplanes: <https://www.federalregister.gov/documents/2013/11/27/2013-28638/airworthiness-directives-the-boeing-company-airplanes>, last access: 21 January 2020.
615

Bansemer, A.: Software for OAP Data Analysis Version 2, available at <https://github.com/abansemer/soda2>, last access: 20 January 2020.

Baumgardner, D.: The effects of air-flow distortion on aircraft measurement: A workshop summary, Bull. Am. Meteorol. Soc., 1212–1213, 1984.

- 620 Baumgardner, D. and Korolev, A.: Airspeed Corrections for Optical Array Probe Sample Volumes, *J. Atmospheric Ocean. Technol.*, 14, 1224–1229, [https://doi.org/10.1175/1520-0426\(1997\)014<1224:ACFOAP>2.0.CO;2](https://doi.org/10.1175/1520-0426(1997)014<1224:ACFOAP>2.0.CO;2), 1997.
- Baumgardner, D., Newton, R., Krämer, M., Meyer, J., Beyer, A., Wendisch, M., and Vochezer, P.: The Cloud Particle Spectrometer with Polarization Detection (CPSPD): A next generation open-path cloud probe for distinguishing liquid cloud droplets from ice crystals, *Atmospheric Res.*, 142, 2–14, <https://doi.org/10.1016/j.atmosres.2013.12.010>, 2014.
- 625 Baumgardner, D., Abel, S. J., Axisa, D., Cotton, R., Crosier, J., Field, P., Gurganus, C., Heymsfield, A., Korolev, A., Krämer, M., Lawson, P., McFarquhar, G., Ulanowski, Z., and Um, J.: Cloud Ice Properties: In Situ Measurement Challenges, *Meteorol. Monogr.*, 58, 9.1-9.23, <https://doi.org/10.1175/AMSMONOGRAPHS-D-16-0011.1>, 2017.
- Berendsen, H. J. C.: A Student's Guide to Data and Error Analysis. Cambridge Core, <https://doi.org/10.1017/CBO9780511921247>, 2011.
- 630 Beswick, K., Baumgardner, D., Gallagher, M., Volz-Thomas, A., Nedelec, P., Wang, K.-Y., and Lance, S.: The backscatter cloud probe – a compact low-profile autonomous optical spectrometer, *Atmospheric Meas. Tech.*, 7, 1443–1457, <https://doi.org/10.5194/amt-7-1443-2014>, 2014.
- Biter, C. J., Dye, J. E., Huffman, D., and King, W. D.: The Drop-Size Response of the CSIRO Liquid Water Probe, *J. Atmospheric Ocean. Technol.*, 4, 359–367, [https://doi.org/10.1175/1520-0426\(1987\)004<0359:TDSROT>2.0.CO;2](https://doi.org/10.1175/1520-0426(1987)004<0359:TDSROT>2.0.CO;2), 1987.
- 635 Bohren, C. F. and Huffman, D. R.: Absorption and scattering of light by small particles, Wiley, New York, xiv+530 pp., 1983.
- Bravin, M. and Strapp, J. W.: A Continuing Investigation of Diurnal and Location Trends in an Ice Crystal Icing Engine Event Database, *SAE Int. J. Adv. Curr. Pract. Mobil.*, 2, 90–105, <https://doi.org/10.4271/2019-01-1964>, 2019.
- Cairo, F., Donfrancesco, G. D., Snels, M., Fierli, F., Viterbini, M., Borrmann, S., and Frey, W.: A comparison of light backscattering and particle size distribution measurements in tropical cirrus clouds, *Atmospheric Meas. Tech.*, 4, 557–570, <https://doi.org/10.5194/amt-4-557-2011>, 2011.
- 640 Chýlek, P., Kiehl, J. T., Ko, M. K. W., and Ashkin, A.: Surface Waves in Light Scattering by Spherical and Non-Spherical Particles, in: *Light Scattering by Irregularly Shaped Particles*, edited by: Schuerman, D. W., Springer US, Boston, MA, 153–164, https://doi.org/10.1007/978-1-4684-3704-1_18, 1980.

645 Connolly, P. J., Flynn, M. J., Ulanowski, Z., Chouarton, T. W., Gallagher, M. W., and Bower, K. N.: Calibration of the Cloud
Particle Imager Probes Using Calibration Beads and Ice Crystal Analogs: The Depth of Field, *J. Atmospheric Ocean. Technol.*,
24, 1860–1879, <https://doi.org/10.1175/JTECH2096.1>, 2007.

Cooper, W. A.: Effects of Coincidence on Measurements with a Forward Scattering Spectrometer Probe, *J. Atmospheric
Ocean. Technol.*, 5, 823–832, [https://doi.org/10.1175/1520-0426\(1988\)005<0823:EOCOMW>2.0.CO;2](https://doi.org/10.1175/1520-0426(1988)005<0823:EOCOMW>2.0.CO;2), 1988.

650 Delene, D. J.: Airborne data processing and analysis software package, *Earth Sci. Inform.*, 4, 29–44,
<https://doi.org/10.1007/s12145-010-0061-4>, 2011.

Delene, D. J.: Suitability of North Dakota for Conducting Effective Hygroscopic Seeding, *J. Weather Modif.*, 48, 43–67, 2016.

Delene, D. J., Hibert, K., Poellot, M., and Brackin, N.: The North Dakota Citation Research Aircraft Measurement Platform,
2019 SAE Int. Conf. Icing Aircr. Engines Struct., 2019.

655 Frey, W., Borrmann, S., Kunkel, D., Weigel, R., de Reus, M., Schlager, H., Roiger, A., Voigt, C., Hoor, P., Curtius, J., Krämer,
M., Schiller, C., Volk, C. M., Homan, C. D., Fierli, F., Di Donfrancesco, G., Ulanovsky, A., Ravegnani, F., Sitnikov, N. M.,
Viciani, S., D'Amato, F., Shur, G. N., Belyaev, G. V., Law, K. S., and Cairo, F.: In situ measurements of tropical cloud
properties in the West African Monsoon: upper tropospheric ice clouds, Mesoscale Convective System outflow, and subvisual
cirrus, *Atmospheric Chem. Phys.*, 11, 5569–5590, <https://doi.org/10.5194/acp-11-5569-2011>, 2011.

660 Gayet, J.-F., Mioche, G., Bugliaro, L., Protat, A., Minikin, A., Wirth, M., Dörnbrack, A., Shcherbakov, V., Mayer, B., Garnier,
A., and Gourbeyre, C.: On the observation of unusual high concentration of small chain-like aggregate ice crystals and large
ice water contents near the top of a deep convective cloud during the CIRCLE-2 experiment, *Atmospheric Chem. Phys.*, 12,
727–744, <https://doi.org/10.5194/acp-12-727-2012>, 2012.

665 Haggerty, J., Defer, E., De Laat, A., Bedka, K., Moisselin, J.-M., Potts, R., Delanoë, J., Parol, F., Grandin, A., and Divito, S.:
Detecting Clouds Associated with Jet Engine Ice Crystal Icing, *Bull. Am. Meteorol. Soc.*, 100, 31–40,
<https://doi.org/10.1175/BAMS-D-17-0252.1>, 2018.

Halama, G., Ray, M., Anderson, K., Nesnidal, M., and Ide, R.: Optical Ice Detection: Test Results from the NASA Glenn Icing
Research Tunnel, in: AIAA Atmospheric and Space Environments Conference, American Institute of Aeronautics and
Astronautics, <https://doi.org/10.2514/6.2010-7532>, 2010.

670 Heymsfield, A. J.: Ice Particle Evolution in the Anvil of a Severe Thunderstorm during CCOPE, *J. Atmospheric Sci.*, 43,
2463–2478, [https://doi.org/10.1175/1520-0469\(1986\)043<2463:IPEITA>2.0.CO;2](https://doi.org/10.1175/1520-0469(1986)043<2463:IPEITA>2.0.CO;2), 1986.

Heymsfield, A. J. and Miloshevich, L. M.: Homogeneous Ice Nucleation and Supercooled Liquid Water in Orographic Wave Clouds, *J. Atmospheric Sci.*, 50, 2335–2353, [https://doi.org/10.1175/1520-0469\(1993\)050<2335:HINASL>2.0.CO;2](https://doi.org/10.1175/1520-0469(1993)050<2335:HINASL>2.0.CO;2), 1993.

675 Heymsfield, A. J. and Parrish, J. L.: A Computational Technique for Increasing the Effective Sampling Volume of the PMS Two-Dimensional Particle Size Spectrometer, *J. Appl. Meteorol.*, 17, 1566–1572, [https://doi.org/10.1175/1520-0450\(1978\)017<1566:ACTFIT>2.0.CO;2](https://doi.org/10.1175/1520-0450(1978)017<1566:ACTFIT>2.0.CO;2), 1978.

Heymsfield, A. J., Krämer, M., Luebke, A., Brown, P., Cziczo, D. J., Franklin, C., Lawson, P., Lohmann, U., McFarquhar, G., Ulanowski, Z., and Van Tricht, K.: Cirrus Clouds, *Meteorol. Monogr.*, 58, 2.1-2.26, <https://doi.org/10.1175/AMSMONOGRAPHS-D-16-0010.1>, 2017.

680 Horvath, H., Gunter, R. L., and Wilkison, S. W.: Determination of the Coarse Mode of the Atmospheric Aerosol Using Data from a Forward-Scattering Spectrometer Probe, *Aerosol Sci. Technol.*, 12, 964–980, <https://doi.org/10.1080/02786829008959407>, 1990.

Hovenac, E. A. and Lock, J. A.: Assessing the contributions of surface waves and complex rays to far-field Mie scattering by use of the Debye series, *JOSA A*, 9, 781–795, <https://doi.org/10.1364/JOSAA.9.000781>, 1992.

Hulst, H. C. and Hulst, H. C. van de: *Light Scattering by Small Particles*, Courier Corporation, 500 pp., 1981.

685 Jarvinen, P.: Detection of Pitot-Static Icing at High Altitudes, in: 51st AIAA Aerospace Sciences Meeting including the New Horizons Forum and Aerospace Exposition, American Institute of Aeronautics and Astronautics, <https://doi.org/10.2514/6.2013-655>, 2013.

690 Jensen, M. P., Petersen, W. A., Bansemmer, A., Bharadwaj, N., Carey, L. D., Cecil, D. J., Collis, S. M., Del Genio, A. D., Dolan, B., Gerlach, J., Giangrande, S. E., Heymsfield, A., Heymsfield, G., Kollias, P., Lang, T. J., Nesbitt, S. W., Neumann, A., Poellot, M., Rutledge, S. A., Schwaller, M., Tokay, A., Williams, C. R., Wolff, D. B., Xie, S., and Zipser, E. J.: The Midlatitude Continental Convective Clouds Experiment (MC3E), *Bull. Am. Meteorol. Soc.*, 97, 1667–1686, <https://doi.org/10.1175/BAMS-D-14-00228.1>, 2015.

695 Johnson, A., Lasher-Trapp, S., Bansemmer, A., Ulanowski, Z., and Heymsfield, A. J.: Difficulties in Early Ice Detection with the Small Ice Detector-2 HIAPER (SID-2H) in Maritime Cumuli, *J. Atmospheric Ocean. Technol.*, 31, 1263–1275, <https://doi.org/10.1175/JTECH-D-13-00079.1>, 2014.

Kedenburg, S., Vieweg, M., Gissibl, T., and Giessen, H.: Linear refractive index and absorption measurements of nonlinear optical liquids in the visible and near-infrared spectral region, *Opt. Mater. Express*, 2, 1588–1611, <https://doi.org/10.1364/OME.2.001588>, 2012.

700 Korolev, A.: Reconstruction of the Sizes of Spherical Particles from Their Shadow Images. Part I: Theoretical Considerations, *J. Atmospheric Ocean. Technol.*, 24, 376–389, <https://doi.org/10.1175/JTECH1980.1>, 2007.

Korolev, A., Strapp, J. W., Isaac, G. A., and Emery, E.: Improved Airborne Hot-Wire Measurements of Ice Water Content in Clouds, *J. Atmospheric Ocean. Technol.*, 30, 2121–2131, <https://doi.org/10.1175/JTECH-D-13-00007.1>, 2013a.

705 Korolev, A. V., Kuznetsov, S. V., Makarov, Y. E., and Novikov, V. S.: Evaluation of Measurements of Particle Size and Sample Area from Optical Array Probes, *J. Atmospheric Ocean. Technol.*, 8, 514–522, [https://doi.org/10.1175/1520-0426\(1991\)008<0514:EOMOPS>2.0.CO;2](https://doi.org/10.1175/1520-0426(1991)008<0514:EOMOPS>2.0.CO;2), 1991.

Korolev, A. V., Strapp, J. W., Isaac, G. A., and Nevzorov, A. N.: The Nevzorov Airborne Hot-Wire LWC–TWC Probe: Principle of Operation and Performance Characteristics, *J. Atmospheric Ocean. Technol.*, 15, 1495–1510, [https://doi.org/10.1175/1520-0426\(1998\)015<1495:TNAHWL>2.0.CO;2](https://doi.org/10.1175/1520-0426(1998)015<1495:TNAHWL>2.0.CO;2), 1998.

710 Korolev, A. V., Emery, E. F., Strapp, J. W., Cober, S. G., and Isaac, G. A.: Quantification of the Effects of Shattering on Airborne Ice Particle Measurements, *J. Atmospheric Ocean. Technol.*, 30, 2527–2553, <https://doi.org/10.1175/JTECH-D-13-00115.1>, 2013b.

Krämer, M., Schiller, C., Afchine, A., Bauer, R., Gensch, I., Mangold, A., Schlicht, S., Spelten, N., Sitnikov, N., Borrmann, S., de Reus, M., and Spichtinger, P.: Ice supersaturations and cirrus cloud crystal numbers, *Atmospheric Chem. Phys.*, 9, 3505–3522, <https://doi.org/10.5194/acp-9-3505-2009>, 2009.

715 Kumjian, M. R., Mishra, S., Giangrande, S. E., Toto, T., Ryzhkov, A. V., and Bansemer, A.: Polarimetric radar and aircraft observations of saggy bright bands during MC3E, *J. Geophys. Res. Atmospheres*, 121, 3584–3607, <https://doi.org/10.1002/2015JD024446>, 2016.

Lance, S.: Coincidence Errors in a Cloud Droplet Probe (CDP) and a Cloud and Aerosol Spectrometer (CAS), and the Improved Performance of a Modified CDP, *J. Atmospheric Ocean. Technol.*, 29, 1532–1541, <https://doi.org/10.1175/JTECH-D-11-00208.1>, 2012.

720 Laven, P.: MiePlot, available at <http://www.philiplaven.com/mieplot.htm>, last access: 20 January 2020.

Lawson, R. P., Angus, L. J., and Heymsfield, A. J.: Cloud Particle Measurements in Thunderstorm Anvils and Possible Weather Threat to Aviation, *J. Aircr.*, 35, 113–121, <https://doi.org/10.2514/2.2268>, 1998.

725 Lawson, R. P., Baker, B., Pilson, B., and Mo, Q.: In Situ Observations of the Microphysical Properties of Wave, Cirrus, and Anvil Clouds. Part II: Cirrus Clouds, *J. Atmospheric Sci.*, 63, 3186–3203, <https://doi.org/10.1175/JAS3803.1>, 2006a.

Lawson, R. P., O'Connor, D., Zmarzly, P., Weaver, K., Baker, B., Mo, Q., and Jonsson, H.: The 2D-S (Stereo) Probe: Design and Preliminary Tests of a New Airborne, High-Speed, High-Resolution Particle Imaging Probe, *J. Atmospheric Ocean. Technol.*, 23, 1462–1477, <https://doi.org/10.1175/JTECH1927.1>, 2006b.

730 Liou, K.-N., and Yang, P.: *Light Scattering by Ice Crystals*. Cambridge Core, <https://doi.org/10.1017/CBO9781139030052>, 2016.

Lolli, S., Welton, E. J., and Campbell, J. R.: Evaluating Light Rain Drop Size Estimates from Multiwavelength Micropulse Lidar Network Profiling, *J. Atmospheric Ocean. Technol.*, 30, 2798–2807, <https://doi.org/10.1175/JTECH-D-13-00062.1>, 2013.

735 Mason, J., Strapp, W., and Chow, P.: The Ice Particle Threat to Engines in Flight, in: 44th AIAA Aerospace Sciences Meeting and Exhibit, Reno, Nevada, <https://doi.org/10.2514/6.2006-206>, 2006.

740 McFarquhar, G. M., Baumgardner, D., Bansemer, A., Abel, S. J., Crosier, J., French, J., Rosenberg, P., Korolev, A., Schwarzenboeck, A., Leroy, D., Um, J., Wu, W., Heymsfield, A. J., Twohy, C., Detwiler, A., Field, P., Neumann, A., Cotton, R., Axisa, D., and Dong, J.: Processing of Ice Cloud In Situ Data Collected by Bulk Water, Scattering, and Imaging Probes: Fundamentals, Uncertainties, and Efforts toward Consistency, *Meteorol. Monogr.*, 58, 11.1-11.33, <https://doi.org/10.1175/AMSMONOGRAPHIS-D-16-0007.1>, 2017.

Mishchenko, M. I., Travis, L. D., and Mackowski, D. W.: T-matrix computations of light scattering by nonspherical particles: A review, *J. Quant. Spectrosc. Radiat. Transf.*, 55, 535–575, [https://doi.org/10.1016/0022-4073\(96\)00002-7](https://doi.org/10.1016/0022-4073(96)00002-7), 1996.

745 O'Shea, S. J., Crosier, J., Dorsey, J., Schledewitz, W., Crawford, I., Borrmann, S., Cotton, R., and Bansemer, A.: Revisiting particle sizing using greyscale optical array probes: evaluation using laboratory experiments and synthetic data, *Atmospheric Meas. Tech.*, 12, 3067–3079, <https://doi.org/10.5194/amt-12-3067-2019>, 2019.

Pukelsheim, F.: The Three Sigma Rule, *Am. Stat.*, 48, 88–91, <https://doi.org/10.2307/2684253>, 1994.

Ray, M. and Anderson, K.: Analysis of Flight Test Results of the Optical Ice Detector, *SAE Int. J. Aerosp.*, 8, 1–8, <https://doi.org/10.4271/2015-01-2106>, 2015.

750 Ray, M., Nesnidal, M., and Socha, D.: Optical Detection of Airborne Ice Crystals and Liquid Water Droplets, in: 1st AIAA Atmospheric and Space Environments Conference, American Institute of Aeronautics and Astronautics, <https://doi.org/10.2514/6.2009-3863>, 2009.

Rosenfeld, D. and Woodley, W. L.: Deep convective clouds with sustained supercooled liquid water down to -37.5 °C, *Nature*, 405, 440–442, <https://doi.org/10.1038/35013030>, 2000.

755 Schmidt, J. M., Flatau, Piotr. J., Harasti, P. R., Yates, Robert. D., Delene, D. J., Gapp, N. J., Kohri, W. J., Vetter, J. R., Nachamkin, J. E., Parent, M. G., Hoover, J. D., Anderson, M. J., Green, S., and Bennett, J. E.: Radar Detection of Individual Raindrops, *Bull. Am. Meteorol. Soc.*, <https://doi.org/10.1175/BAMS-D-18-0130.1>, 2019.

Schön, R., Schnaiter, M., Ulanowski, Z., Schmitt, C., Benz, S., Möhler, O., Vogt, S., Wagner, R., and Schurath, U.: Particle Habit Imaging Using Incoherent Light: A First Step toward a Novel Instrument for Cloud Microphysics, *J. Atmospheric Ocean. Technol.*, 28, 493–512, <https://doi.org/10.1175/2011JTECHA1445.1>, 2011.

760 Schwarzenboeck, A., Mioche, G., Armetta, A., Herber, A., and Gayet, J.-F.: Response of the Nevzorov hot wire probe in clouds dominated by droplet conditions in the drizzle size range, *Atmospheric Meas. Tech.*, 2, 779–788, <https://doi.org/10.5194/amt-2-779-2009>, 2009.

Shishko, V. A., Konoshonkin, A. V., Kustova, N. V., and Timofeev, D. N.: Light scattering by spherical particles for data interpretation of mobile lidars, *Opt. Eng.*, 59, 083103, <https://doi.org/10.1117/1.OE.59.8.083103>, 2020.

765 Skofronick-Jackson, G., Hudak, D., Petersen, W., Nesbitt, S. W., Chandrasekar, V., Durden, S., Gleicher, K. J., Huang, G.-J., Joe, P., Kollias, P., Reed, K. A., Schwaller, M. R., Stewart, R., Tanelli, S., Tokay, A., Wang, J. R., and Wolde, M.: Global Precipitation Measurement Cold Season Precipitation Experiment (GCPEX): For Measurement's Sake, Let It Snow, *Bull. Am. Meteorol. Soc.*, 96, 1719–1741, <https://doi.org/10.1175/BAMS-D-13-00262.1>, 2014.

770 Spanu, A., Dollner, M., Gasteiger, J., Bui, T. P., and Weinzierl, B.: Flow-induced errors in airborne in situ measurements of aerosols and clouds, *Atmospheric Meas. Tech.*, 13, 1963–1987, <https://doi.org/10.5194/amt-13-1963-2020>, 2020.

Tanaka, M., Girard, G., Davis, R., Peuto, A., and Bignell, N.: Recommended table for the density of water between 0 C and 40 C based on recent experimental reports, *Metrologia*, 38, 301–309, <https://doi.org/10.1088/0026-1394/38/4/3>, 2001.

Warren, S. G. and Brandt, R. E.: Optical constants of ice from the ultraviolet to the microwave: A revised compilation, *J. Geophys. Res. Atmospheres*, 113, <https://doi.org/10.1029/2007JD009744>, 2008.

775 Wesely, M. L.: The Combined Effect of Temperature and Humidity Fluctuations on Refractive Index, *J. Appl. Meteorol.*, 15, 43–49, [https://doi.org/10.1175/1520-0450\(1976\)015<0043:TCEOTA>2.0.CO;2](https://doi.org/10.1175/1520-0450(1976)015<0043:TCEOTA>2.0.CO;2), 1976.

Wu, W. and McFarquhar, G. M.: On the Impacts of Different Definitions of Maximum Dimension for Nonspherical Particles Recorded by 2D Imaging Probes, *J. Atmospheric Ocean. Technol.*, 33, 1057–1072, <https://doi.org/10.1175/JTECH-D-15-0177.1>, 2016.

780 Yang, P. and Liou, K. N.: Light scattering by hexagonal ice crystals: comparison of finite-difference time domain and geometric optics models, *JOSA A*, 12, 162–176, <https://doi.org/10.1364/JOSAA.12.000162>, 1995.

Yang, P., Wei, H., Huang, H.-L., Baum, B. A., Hu, Y. X., Kattawar, G. W., Mishchenko, M. I., and Fu, Q.: Scattering and absorption property database for nonspherical ice particles in the near- through far-infrared spectral region, *Appl. Opt.*, 44, 5512–5523, <https://doi.org/10.1364/AO.44.005512>, 2005.

785 Yang, P., Bi, L., Baum, B. A., Liou, K.-N., Kattawar, G. W., Mishchenko, M. I., and Cole, B.: Spectrally Consistent Scattering, Absorption, and Polarization Properties of Atmospheric Ice Crystals at Wavelengths from 0.2 to 100 μ m, *J. Atmospheric Sci.*, 70, 330–347, <https://doi.org/10.1175/JAS-D-12-039.1>, 2013.

Zhang, F., Pyle, J., and North, G. R.: *Encyclopedia of Atmospheric Sciences*, Volume 3, Academic Press, London, 2015.

790 Zhou, C. and Yang, P.: Backscattering peak of ice cloud particles, *Opt. Express*, 23, 11995–12003, <https://doi.org/10.1364/OE.23.011995>, 2015.

Formatted: Bibliography