

# Introduction to EarthCARE synthetic data using a global storm-resolving simulation

Woosub Roh<sup>1</sup>, Masaki Satoh<sup>1</sup>, Tempei Hashino<sup>2</sup>, Shuhei Matsugishi<sup>1</sup>, Tomoe Nasuno<sup>3</sup>, and Takuji Kubota<sup>4</sup>

5 <sup>1</sup>Atmosphere and Ocean Research Institute, The University of Tokyo, Kashiwa, Chiba 277-8564, Japan

<sup>2</sup>Kochi University of Technology, Kami, Japan

<sup>3</sup>Research Institute for Global Change, Japan Agency for Marine-Earth Science and Technology, Kanagawa, Japan

<sup>4</sup>Earth Observation Research Center, Japan Aerospace Exploration Agency, Tsukuba, Ibaraki, Japan

*Correspondence to:* Woosub Roh (ws-roh@aori.u-tokyo.ac.jp)

10 **Abstract.** ~~Pre-launch simulated satellite data are useful to develop retrieval algorithms and to facilitate the rapid release of~~  
~~Pre-launch simulated data to be obtained from new sensors on a satellite is useful to develop retrieval algorithms and aid the~~  
~~rapid release of~~ retrieval products after launch. Here we introduce the Japanese Aerospace Exploration Agencies (JAXA)  
EarthCARE synthetic data based on simulations using a 3.5 km horizontal-mesh global storm-resolving model. Global aerosol  
transport simulation results are added for aerosol retrieval developers. Synthetic data were produced corresponding to the four  
15 EarthCARE instruments sensors, namely for four types of EarthCARE sensor: a 94 GHz cloud-profiling radar (CPR), a 355  
nm atmospheric lidar (ATLID), a seven-channel multispectral imager (MSI), and a broadband radiometer (BBR). JAXA  
EarthCARE synthetic data include a standard product with data for two orbits and a research product with shorter frames and  
more detailed instrument settings. In the research products, random errors in the CPR are considered based on the observation  
window, and noise in ATLID signals are added using a noise simulator. We consider the spectral misalignment effect of the  
20 visible and near-infrared MSI channels based on response functions depending on the angle from the nadir. We ~~discuss~~  
introduce plans for updating the JAXA EarthCARE synthetic data using a large eddy simulation model data and the  
implementation of a three-dimensional radiation model. The JAXA EarthCARE synthetic data are available publicly.

## 1 Introduction

25

The Earth Clouds, Aerosol, and Radiation Explorer (EarthCARE) satellite is a joint mission of the Japanese Aerospace  
Exploration Agencies (JAXA) and the European Space Agency (ESA) (Illingworth et al. 2015, Wehr et al. 2023). The satellite  
will carry four instruments: a 94 GHz cloud-profiling radar (CPR), a 355 nm atmospheric lidar (ATLID), a seven-channel  
multispectral imager (MSI), and a broadband radiometer (BBR). These instruments are aboard a single platform and are  
30 expected to provide synergistic retrieval products. Nominal level 1 (L1) data are observed directly by the instruments. There

are plans to produce retrieval products (L2) for clouds, aerosol, and radiative properties using L1 data from single or multiple instruments. For the development and validation of L2 data, pre-launch simulated L1 data are required. The JAXA EarthCARE-like L1 synthetic data (JAXA L1 data) were developed using a [Global Storm Resolving Model](#)~~global-storm-resolving-model~~ (GSRM; Satoh et al., 2019; Stevens et al., 2019) and a satellite simulator developed by JAXA and The  
35 University of Tokyo, Japan .

The simulation scenes for JAXA L1 data were constructed using numerically simulated GSRM data, which resolve cloud and precipitation systems without ~~global~~ convective parametrization by enhancing horizontal resolution above that of a typical global circulation model (GCM). One of the merits of GSRMs is that ~~it-they~~ does not heavily rely on ambiguous assumptions of cloud fractions at subgrid scales, in contrast ~~to-to~~ GCMs. ~~As pioneering studies of GSRMs,~~ The Nonhydrostatic Icosahedral  
40 Atmospheric Model (NICAM; Satoh et al., 2014) ~~is one of the pioneering GSRMs. It~~ has been evaluated and improved using various satellite data (e.g., Masunaga et al., 2008; Roh and Satoh, 2014, 2018; Roh et al., 2017, 2020). Evaluations have included global precipitation and cloud systems in various locations.

A satellite simulator is a collection of radiative transfer models used to simulate satellite-like signals based on outputs of atmospheric models such as GSRMs and GCMs (e.g., Bodas-Salcedo et al., 2011; Hashino et al., 2013, 2016; Matsui et al.,  
45 2014; Saunders et al., 2018). Simulators have been developed to evaluate, improve, and compare numerical models using satellite observation data. Here, the Joint Simulator for Satellite Sensors (Hashino et al. 2013, 2016; Satoh et al. 2016) was used as a satellite simulator to produce EarthCARE synthetic data before the launch of the satellite.

JAXA L1 data have been used in several studies to evaluate the performances of CPR and MSI. Hagihara et al. (2021) investigated expected Doppler errors based on the instrument settings ~~of-related-to-the-observation-window~~ ~~the top height of~~  
50 ~~the observation (observation window)~~. In testing different observation windows of CPR, it has been found that the unfolding correction and increased horizontal sampling reduced Doppler errors. The latitude variation of Doppler errors has also been investigated using JAXA L1 data (Hagihara et al., 2022), and Wang et al. (2022) investigated the SMILE (Spectral Misalignment Effect) of MSI data on the cloud retrieval algorithm. JAXA L1 data can also be used as a testbed to check retrieval algorithm performance, and it is possible to directly compare original cloud data and precipitation simulated by ~~GSRM~~  
55 ~~NICAM~~ with data retrieved from retrieval algorithms for each sensor.

JAXA L1 data are of two types, namely the standard product and the research product, the latter of which includes noise and more detailed information about instrument settings. The former comprises two sets of orbit data covering two full global circles, whereas the latter has shorter frames with more detailed instrument settings for retrieval algorithm developers.

Here we introduce ~~the JAXA simulated L1 EarthCARE data set~~. Detailed information concerning input data, the orbit/scan  
60 simulator, and satellite simulators are described in Section 2. Data for each sensor are also described with instrument settings and output data. Recent and planned developments are discussed in Section 4, including ~~the use of~~ a large eddy simulation ~~mode data~~ and ~~the implementation of a~~ three-dimensional (3D) radiation model.

## 2 Data and model descriptions

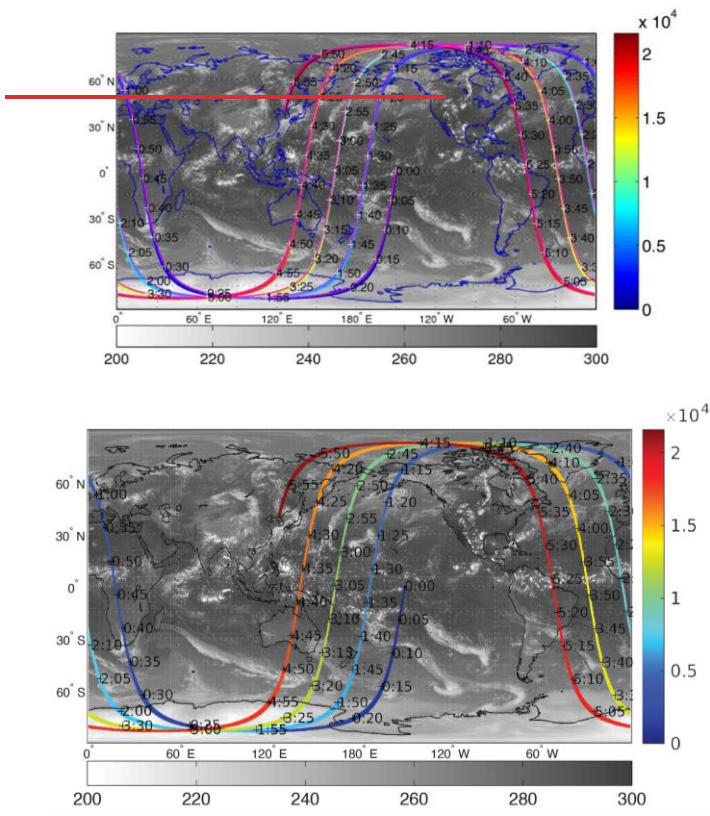
### 2.1 Global storm-resolving simulations

65 ~~The JAXA L1 simulation data~~ are based on input data for meteorological conditions, distributions and characteristics of  
clouds, precipitation, and aerosols related to signals from satellite sensors. We used ~~numerically-simulated data from the~~  
~~Nonhydrostatic Icosahedral Atmospheric Model (NICAM data to drive the instrument simulations. ; Tomita and Satoh, 2004;~~  
~~Satoh et al., 2008, 2014) as a GSRM. NICAM was configured with a horizontal resolution of about 3.5 km Horizontal~~  
~~resolution was ~3.5 km~~ and the vertical grid had 40 levels (table 1 in Satoh et al., 2010). The simulation commenced at 00:00Z  
70 on 15 June 2008 and was initialized using a  $0.5^\circ \times 0.5^\circ$  ECMWF (European Centre for Medium-Range Weather Forecasts)  
Year of Tropical Convection analysis (Waliser et al., 2012); data for 00:00Z on 19 June, 2008, were used here. A bulk single-  
moment cloud microphysics scheme with six water categories (NSW6; Tomita 2008) and the MYNN2 (Nakanishi and Niino,  
2009) boundary-layer scheme were applied. See previous works (Hashino et al. 2013; Yamada et al. 2016; Nasuno et al. 2016)  
for the details of the simulation data. The data have been analyzed also in several papers (Hashino et al. 2016; Matsui et al.  
75 2016; Roh et al. 2017; Kubota et al. 2020).

Aerosol data were simulated using the NICAM Spectral Radiation–Transport Model for Aerosol Species (NICAM–  
SPRINTARS; Takemura et al., 2000), which was implemented using a global 3D aerosol transport–radiation model. The  
horizontal resolution was ~240 km, and the vertical resolution was the same as that used in the 3.5 km mesh simulation.  
Aerosol data simulated by NICAM–SPRINTARS include carbonaceous aerosols (black carbon and organic matter), sulfate,  
80 soil dust, sea salt, and the precursor gases of sulfate (sulfur dioxide and dimethylsulfide (DMS)). Aerosol data were used with  
the ATLID, MSI, and BBR simulations.

The relationship between orbits and cloud distribution in the NICAM simulation is shown in Fig. 1, where simulated 11  $\mu\text{m}$   
brightness temperatures (representing cloud top temperatures) indicate high clouds. ~~The lines indicate the expected~~  
~~EarthCARE orbits corresponding to the simulations presented in this paper. Lines indicate expected EarthCARE satellite orbits.~~

85



**Figure 1.** Simulated tracks and  $a_{\text{swath}}$  of the EarthCARE satellite. The black/white contour is the  $11 \mu\text{m}$  brightness temperature (K). Colors indicate the time from the starting point (00:00Z) in seconds.

90

서식 있음: 표준

## 2.2 Joint Simulator for satellite sensors

The Joint Simulator for satellite sensors (Hashino et al., 2013, 2016) was used to simulate JAXA L1 data from NICAM data. The Joint-Simulator was developed as part of the JAXA EarthCARE mission (Satoh et al. 2016) and has simulators for a visible/infrared imager, radar, lidar, and broadband radiometer corresponding to MSI, CPR, ATLID, and BBR EarthCARE

95 sensors. It also has a microwave radiometer simulator. The basic structure was inherited from the Satellite Data Simulator Unit (SDSU; Masunaga et al., 2010) and the NASA Goddard SDSU (Matsui et al., 2014); several simulators with these SDSUs were shared. The Joint-Simulator has a history of evaluations and improvements of NICAM (Hashino et al., 2013, 2016; Roh et al., 2020). The settings and descriptions of the simulators are described for each sensor in Section 3.

### 100 2.3 Orbit/scan simulators

Orbit/scan simulators produce orbit and swath data based on EarthCARE and NICAM data; the orbit simulator determines the satellite location and the scan simulator determines sampling intervals and the maximum sample number per scan. The simulators are described in Matsui (2013).

105 The orbit/scan simulator assumes a Kepler satellite orbit, and six Keplerian elements are needed to calculate satellite position including inclination, an argument of perigee, and the right ascension of the ascending node. The satellite is in an elliptical orbit and eccentricity, the semi-major angle, and orbit inclination angle define the shape and size of the orbit.

The orbit was designed as the EarthCARE passed the equator at 14:00 local time in descending node. For this, we set up a semi-major axis of 6771.28 km, eccentricity of 0.001283, and an orbit inclination angle of 97.05°, together with initial values of mean anomalies of 270°, an argument of perigee of 270°, and a right ascension of the ascending node of 297.5°.

110 The along- and cross-track sensor sampling intervals were 500 m, 285 m, 500 m, and 10 km for CPR, ATLID, MSI, and BBR, respectively. There were 384 samples per the scan for the MSI, with 102 nadir pixels. The ATLID was considered with 3° of off-nadir angle, as for CALIPSO. The Joint-Simulator applies vertical interpolation on the NICAM data to obtain the samples on the vertical grid defined for each sensor.

There are eight frames for an EarthCARE single orbit, A–H, divided at latitudes of 22.5°N/S and 62.5°N/S. For example,

115 Frame A spans from 22.5°S to 22.5°N in ascending mode. ~~Data for two EarthCARE orbits were the standard product.~~

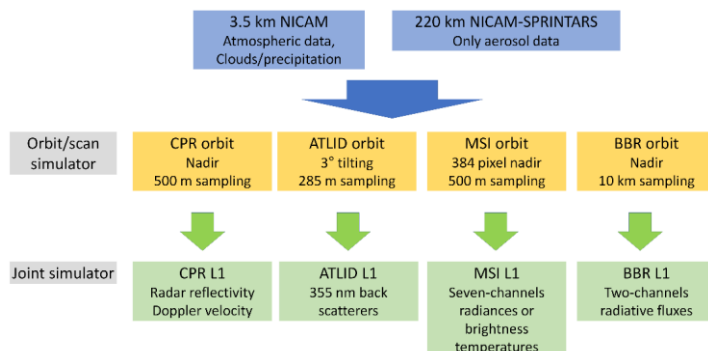


Figure 2. Flowchart for production of JAXA L1 data.

### 120 3 Simulation of EarthCARE signals

A flowchart describing the production of JAXA L1 data is shown in Fig. 2. Input data for the Joint-Simulator were provided by the orbit/scan simulators based on numerical data of NICAM and NICAM-SPRINTARS. Input data were provided for each instrument with the same horizontal resolution and frames. There are two versions of the products like the standard product and the research product (Table 1). More output JAXA L1 data are used for the validation of L2 products, as described below:

125

Table 1. The differences between the standard product and the research product.

	Additional data in the research product
CPR	Random errors of Doppler velocity based on the observation window, surface clutter
ATLID	Random noise
MSI	Consideration of the response function depending on the pixel number

#### 3.1 CPR

The CPR is a 94 GHz cloud profiling radar that can detect radar reflectivity and Doppler velocities. The minimum radar reflectivity is -36 dBZ, which is a higher sensitivity sensitivity than that of CloudSat because of the larger antenna and lower orbit than CloudSat.

130

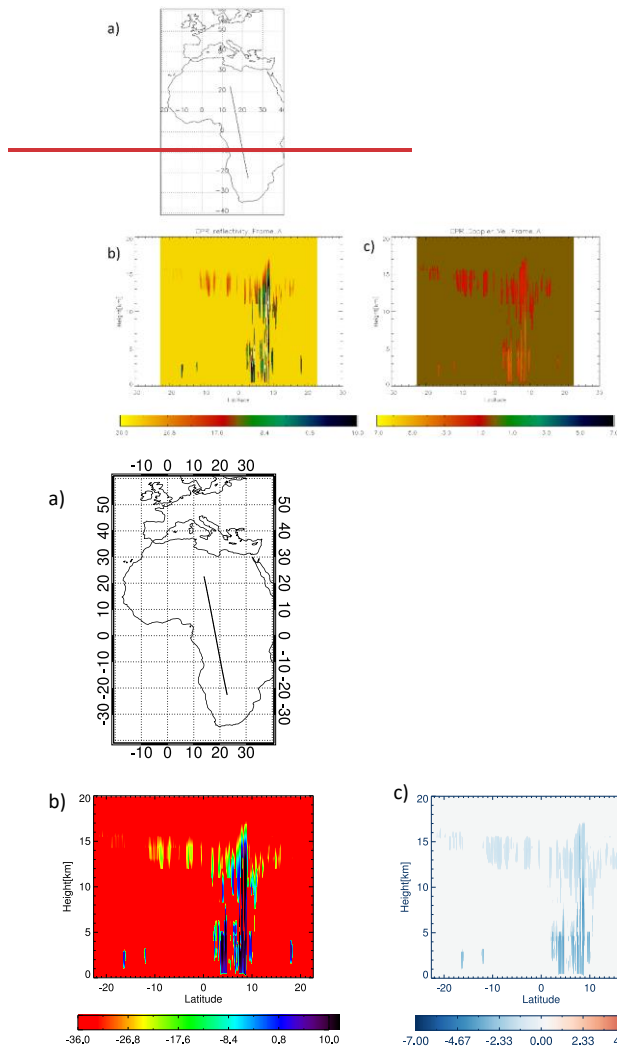
Radar reflectivity and Doppler velocity were simulated by the EarthCARE Active Sensor Simulator (EASE; Okamoto et al., 2007, 2008; Nishizawa et al., 2008). The EASE simulator takes into account the attenuation of radar related to water vapor and hydrometeors. Doppler velocity is calculated using the terminal velocity of hydrometeors weighted by the radar reflectivity and air motion. We set the vertical resolution of CPR at 99.9308 m. The lowest altitude is 50 m, and the top of the observation window is 19936.23 m. We added a total extinction coefficient of 94 GHz in the simulated data product.

135

The CPR data of the JAXA L1 data are shown in Fig. 3, crossing over the African continent with Frame A. Convective clouds are located near the equator, and a high fraction of cirrus clouds is present in this frame. The 94 GHz radar reflectivity is sensitive to both cloud and precipitation particles. However, the attention by liquid hydrometeors is higher than that of the precipitation radar of the Global Precipitation Measurement (GPM) system. Doppler velocity is not affected by the attenuation.

140

- 서식 지정함: 글꼴 (영어) + 본문(Times New Roman), (한글) 바탕, (한글) 한국어, (영어) 영어(미국)
- 서식 있음: 표준, 들여쓰기: 왼쪽: 0 cm, 첫 줄: 0.5 글자, 간격 단락 뒤: 0 pt
- 서식 지정함: 글꼴 색 자동
- 서식 지정함: 글꼴 10 pt, 글꼴 색 자동
- 서식 지정함: 글꼴 색 자동
- 서식 지정함: 글꼴 10 pt, 글꼴 색 자동
- 서식 지정함: 글꼴 색 자동
- 서식 지정함: 글꼴 10 pt, 글꼴 색 자동
- 서식 지정함: 글꼴 색 자동
- 서식 지정함: 글꼴 10 pt, 글꼴 색 자동
- 서식 지정함: 글꼴 색 자동
- 서식 지정함: 글꼴 10 pt, 글꼴 색 자동
- 서식 지정함: 글꼴 색 자동
- 서식 지정함: 글꼴 10 pt, 글꼴 색 자동
- 서식 지정함: 글꼴 색 자동
- 서식 지정함: 글꼴 색 빨강, 영어(영국)
- 서식 있음: 들여쓰기: 첫 줄: 0 글자



**Figure 3.** CPR data of the JAXA L1 data for Frame A over the African continent (a), with radar reflectivities (b) and Doppler velocities (c).  
The units of contours are dBZ (b) and  $m \cdot s^{-1}$  (c).

Surface clutter was considered as being based on the pulse response function of CPR in the research product. The EarthCARE CPR has less surface clutter than CloudSat; an example of expected surface clutter over the ocean shown in Fig. 4. It is possible to detect low clouds higher than 600 m. Expected surface clutter was calculated to indicate the limitation of low-cloud height and to provide realistic JAXA L1 data. Here, the normalized radar cross-section of the surface was set to 10 dB over the ocean and 0 dB over the land. An example of surface clutter over the ocean in the JAXA L1 data is shown in Fig. 5. The normalized radar cross-section over oceans depends on surface winds and sea surface temperature; that over land is more complicated than over oceans and will be updated after the EarthCARE satellite launch.

155

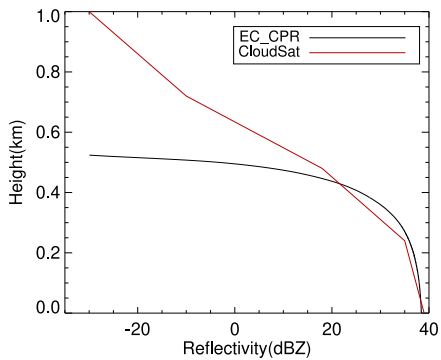
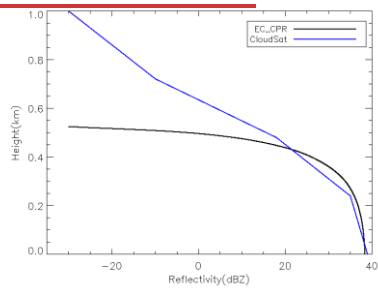


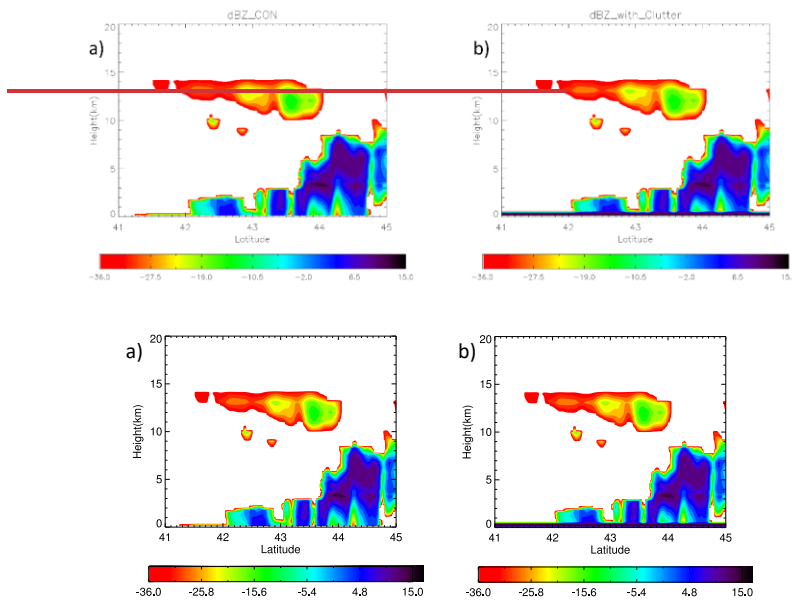
Figure 4. Radar reflectivities due to surface clutter of CPR compared for EarthCARE and CloudSat over the ocean.

저식 있음: 양쪽

저식 있음: 표준

저식 있음: 캡션, 왼쪽, 지정한 문자 수에 맞춰 오른쪽 들여쓰기 자동 조정. 한글과 영어 간격을 자동으로 조절, 한글과 숫자 간격을 자동으로 조절





**Figure 5.** Radar reflectivity of without the standard data (a) and with (b) surface clutter over the ocean, based on the response function of CPR. The unit of contours is dBZ.

165 The observed Doppler velocity from the EarthCARE CPR would be expected to have random errors because of the slight vibration of the instrument on the satellite. The maximum Doppler velocity and its random errors were determined by setting the pulse repetition frequency (PRF) of the CPR. CPR has two modes of observation window in operation: low mode (–1 to 16 km) at latitudes of 60°–90° and high mode (–1 to 20 km) at latitudes of 0°–60° (Hagihara et al., 2022). The other alternative observation window is the middle mode between –1 and 18 km. The PRF changes in a range of 6100–7500 Hz with latitude and observation window because the PRF is determined by the satellite altitude (fig. 1 of Hagihara et al. (2021)). The observation window setting is based on that of Hagihara et al. (2021), who investigated random errors of Doppler velocity of CPR in different modes.

175 The Doppler velocity of an example of the JAXA L1 data is shown in Fig. 6 for observation windows of 16, 18, and 20 km. The 20 km window mode reproduced the noisy Doppler velocity for ice and rain (Fig. 6b) relative to the original L1 data. This mode has a small range of –Doppler folding velocity minimum–maximum Doppler velocity, and it is particularly difficult to retrieve the terminal velocity of ice particles in cirrus clouds. The 16 km observation window yields better performance of Doppler velocity for ice and rain than the other two windows (Fig. 6d), and the top of cirrus clouds is located near an altitude

of 15 km. However, it is still possible to neglect high clouds above 16 km over tropical regions. ~~This indicates the need for care in evaluating the Doppler velocity of ice clouds using a 20 km observation window.~~ The uncertainty in Doppler velocity can be derived from the observation window using the Joint-Simulator.

180

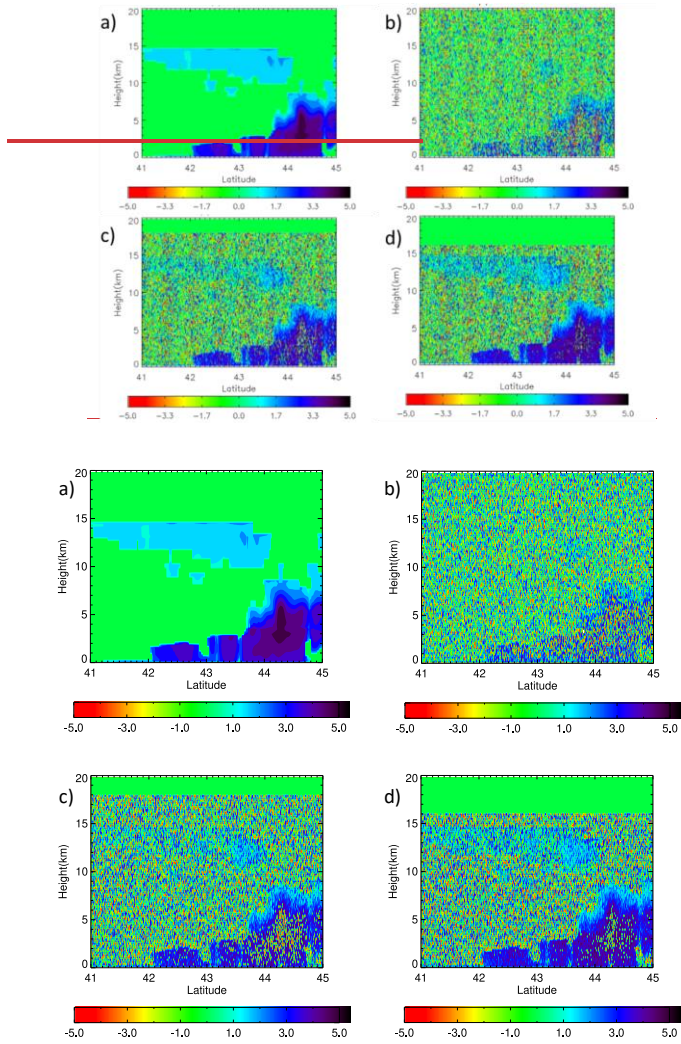


Figure 6. Examples of Doppler velocity for the original-standard L1 data using a 20 km observation window (a), high mode (b), 18 km observation window and middle mode (c), and 16 km observation window and low mode (d). The unit of contours is  $\text{m}\cdot\text{s}^{-1}$ .

185

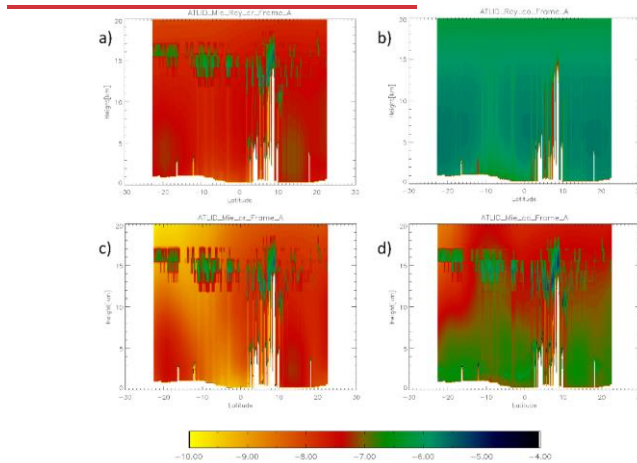
- 서식 지정함: 글꼴 굵게 없음
- 서식 지정함: 글꼴 굵게 없음
- 서식 지정함: 글꼴 굵게 없음
- 서식 지정함: 글꼴 굵게 없음
- 서식 지정함: 글꼴 굵게 없음
- 서식 지정함: 글꼴 (영어) Times New Roman
- 서식 있음: 표준

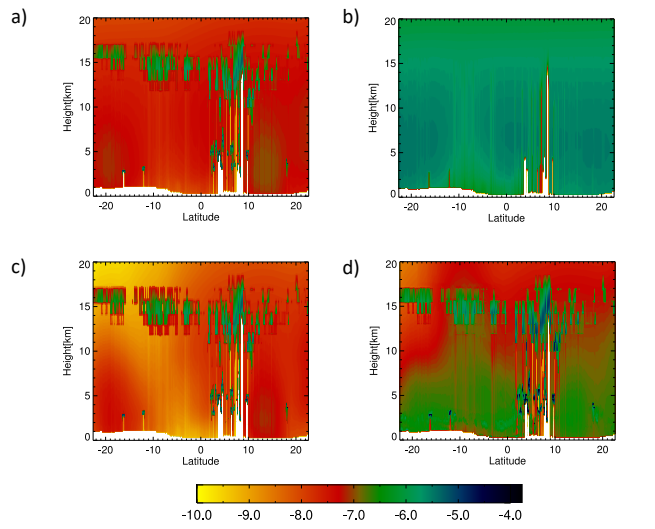
### 3.2 ATLID

ATLID is the 355 nm high-spectral-resolution lidar, which can observe 355 nm backscatter from Mie and Rayleigh scattering. The Mie scattering channel with co-polarization is related to cloud and aerosol particles, and the Rayleigh scattering channel with co-polarization is related to atmospheric molecules. The total attenuated backscatter channel with cross-polarization is related to the shapes of hydrometeors and aerosols.

EASE simulates the lidar signals of ATLID by considering the scattering and attenuation of molecules, hydrometeors, and aerosols. The outputs of ATLID are 355 nm total attenuated backscatters from Mie or Rayleigh scattering. The effect of multiple scattering by liquid hydrometeors on lidar signals was considered using a correction factor parameterized using Monte Carlo simulation (Ishimoto and Masuda, 2002). We provided CALIPSO lidar signals of 532 nm with a depolarization ratio of only 532 nm. The parameterization of the depolarization ratio for 532 nm signals is described by Roh et al. (2020).

Signals of ATLID data over the African continent for Frame A (Fig. 3a) are shown in Fig. 7. The attenuation of backscatter by water clouds is more pronounced than that for CPR below 5 km height. The Rayleigh channels show the backscatter from atmospheric molecules (Fig. 7b), and the Mie channels show cloud and aerosol distributions (Fig. 7c, d). Saharan dust is located within 10°N and 20°N (Fig. 7c, d). For the validation of retrieval algorithms, 355 nm extinction coefficients are provided for liquid and ice clouds, dust, sulfate, sea salt, and black carbon/organic carbon, as well as the molecular extinction coefficient.

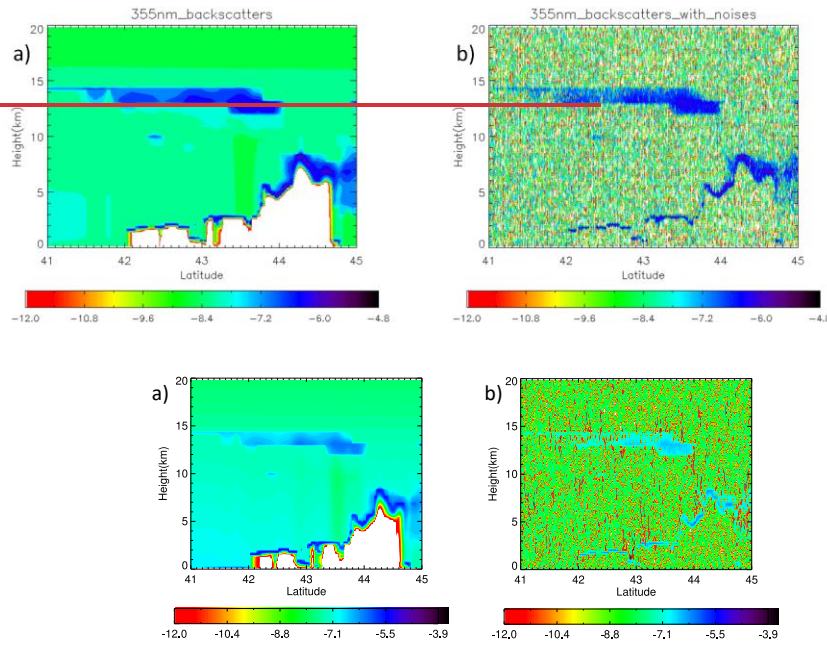




205 **Figure 7.** Examples of ATLID L1 data for Frame A (Fig. 3a), showing combined Rayleigh (Ray) and Mie channels with cross-polarization (CR) (a); Rayleigh channels with co-polarization (CO) (b); and Mie channels with CR (c) and CO (d). Contours are shown on a [base-10](#) log scale of the backscattering coefficients ( $\text{m}^{-1} \text{str}^{-1}$ ).

210 For realistic ATLID L1 data, ~~possible~~ random noise was also considered ~~in the simulator~~ [in the research product](#), with noise data provided by ESA. The noise model was based on a Gaussian random noise from shot noise, dark count rate, and solar background counts of ATLID.

215 Examples of ATLID signals with and without noise are shown in Fig. 8, with two cloud layers related to cirrus clouds above 10 km and water ~~clouds~~ ~~clouds~~ below 10 km. There is strong attenuation in the water clouds, under which values are undefined (Fig. 8a). The undefined values are filled with random noise in the simulation, and it is possible to mis-classify the area under the cloud. Using this random noise, the retrieval algorithm developer ~~could~~ ~~can~~ consider the expected random noise when retrieving physical variables related to aerosols and clouds.



서식 있음: 양쪽

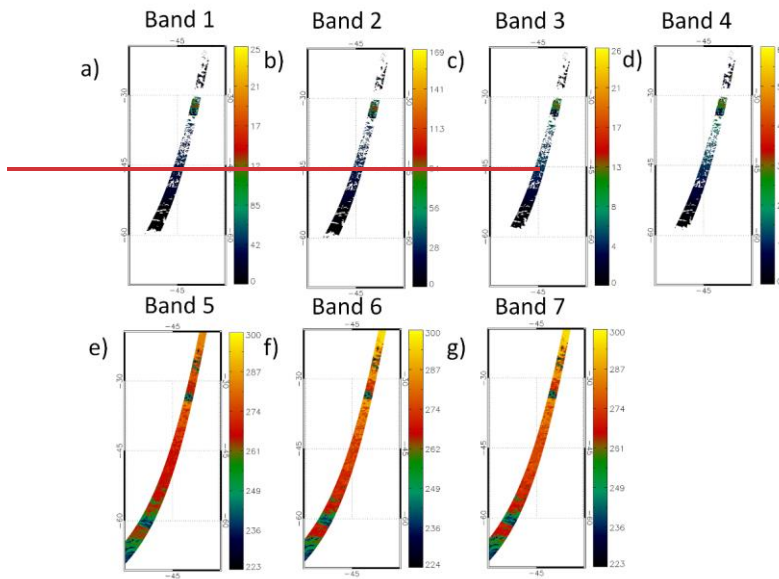
220 **Figure 8.** Examples of 355 nm total attenuated backscattering coefficients of ATLID without of the standard product (a) and with (b)-random noise (b). The contour is a base-10 log scale of backscattering coefficients ( $\text{m}^{-1}\cdot\text{str}^{-1}$ ).

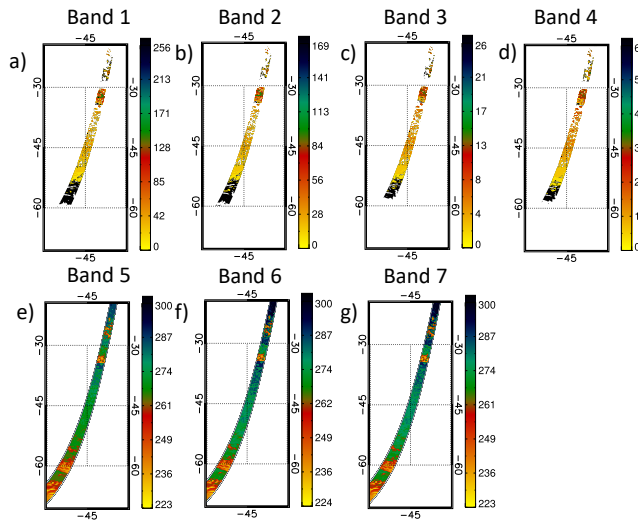
### 3.3 MSI

225 The MSI is a passive sensor used to observe infrared and reflected solar radiances, with seven channels at 0.67, 0.865, 1.65, 2.21, 8.80, 10.8, and 12.0  $\mu\text{m}$ . The total pixel number is 384 in the direction orthogonal to the satellite orbit. The approximated nadir location is in the 102<sup>nd</sup> pixel. MSI signals were calculated by RSTAR (System for Transfer of Atmospheric Radiation; Nakajima and Tanaka, 1986, 1988) as the sensor simulator. RSTAR (Nakajima and Tanaka, 1986) derives the solution of the discrete-ordinate method using Eigenspace transformations of symmetric matrices. RSTAR is a general package for simulating radiation fields in the atmosphere–land–ocean system at wavelengths of 0.17–1000  $\mu\text{m}$ . Monochromatic intensity and intensity with a finite range of wavelengths can be calculated, as required for channels with significant gas absorption. Three streams were set in each hemisphere in the Joint-Simulator (i.e., the six-stream method).

230 We used a fixed wavelength for each channel as the default setting in the JAXA L1 data. The units of channels are radiances [ $\text{W}\cdot\text{m}^{-2}\cdot\text{str}^{-1}\cdot\mu\text{m}^{-1}$ ] for 0.67, 0.865, 1.65, and 2.21  $\mu\text{m}$ . The unit for the other channels is brightness temperature (K). Optical depths of clouds and aerosols were calculated to validate the algorithms. Examples of MSI L1 data for seven channels over

the ocean are shown in Fig. 9 for Frame F. High clouds are located near latitude 33°S, with strong reflection in the 0.67  $\mu\text{m}$  channel and low brightness temperatures in the 8.80, 10.8, and 12.0  $\mu\text{m}$  channels.





240 **Figure 9.** Examples of MSI data over the ocean for Frame F for seven channels at 0.67 (a), 0.865 (b), 1.65 (c), 2.21 (d), 8.80 (e), 10.8 (f), and 12.0  $\mu\text{m}$  (g). The contours of the upper panels are radiance ( $\text{W}\cdot\text{m}^{-2}\cdot\text{sr}^{-1}\cdot\mu\text{m}^{-1}$ ) and those in the bottom panels are temperatures (K).

245 The MSI has a spectral distortion termed the “[smileSMILE](#) effect”, which can be considered using the shifted response function in the spectral domain, depending on the across-track pixel in the swath. MSI is known to be affected by the [smileSMILE](#) effect in the 0.67, 0.865, 1.65, and 2.21  $\mu\text{m}$  channels. The shift of wavelength in the 0.67 and 1.65  $\mu\text{m}$  channels is more obvious than that in the 0.865 and 2.21  $\mu\text{m}$  channels.

250 We introduced the response function of MSI to reproduce the [smileSMILE](#) effect in the Joint-Simulator and simulated two channels of MSI in the research product. We investigated its effect on the radiance of the 0.67 and 1.65  $\mu\text{m}$  channels. Two sets of the shifted response functions for the [smileSMILE](#) effect for these channels are shown in Fig. 10. These channels are used to retrieve cloud properties; the 0.67  $\mu\text{m}$  channel is primarily sensitive to cloud optical thickness and the 1.67-65  $\mu\text{m}$  channel to cloud effective radius (e.g., Platinick et al., 2017).

Differences between the [fixed](#)-response function on the nadir and that with the [smileSMILE](#) effect for the descending scene of the satellite are shown in Fig. 11. For the 0.67  $\mu\text{m}$  channel, there are large differences on the left side of the satellite direction, with signals with the [smileSMILE](#) effect being underestimated relative to the simulation using the fixed response function.

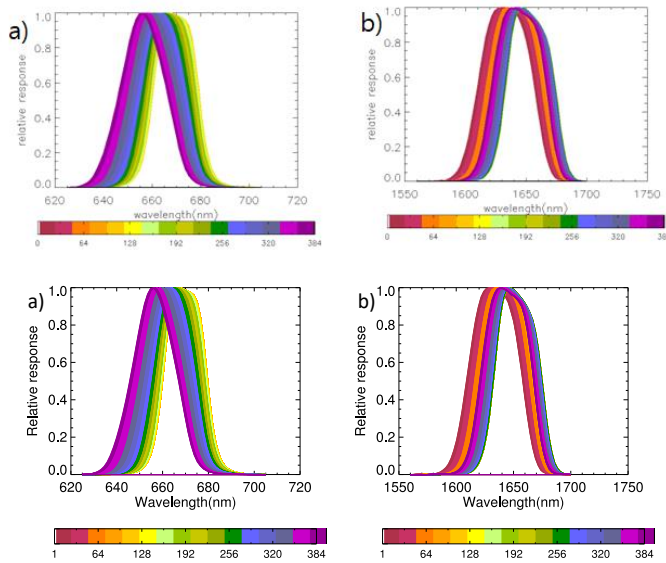


255 The difference is greatest at the edge of the swath with spectral distortion, where the maximum difference is 5.76 radiances ( $\text{W}\cdot\text{m}^{-2}\cdot\text{sr}^{-1}\cdot\mu\text{m}^{-1}$ ). The difference in the right half of the swath is not greater than that on the other side.

For the 1.65  $\mu\text{m}$  channel, the differences in radiance are smaller than those of the 0.67  $\mu\text{m}$  channel. The smileSMILE effect causes a positive bias on the right and a negative bias on the left of satellite direction in the 1.65  $\mu\text{m}$  channel, with a different pattern to the 0.67  $\mu\text{m}$  channel. Wang et al. (2022) investigated the smileSMILE effect for the cloud retrieval algorithm for water and ice clouds over the ocean using these MSI data.

260

서식 있음: 들여쓰기 첫 줄 0.5 글자



265 **Figure 10.** Response functions of MSI (considered the smileSMILE effect) for the 0.67  $\mu\text{m}$  channel (Band 1) (a) and the 1.65  $\mu\text{m}$  channel (Band 3) (b). Colors indicate MSI pixel numbers.

서식 있음: 캡션, 왼쪽, 지정한 문자 수에 맞춰 오른쪽 들여쓰기 자동 조정, 한글과 영어 간격을 자동으로 조절, 한글과 숫자 간격을 자동으로 조절

270

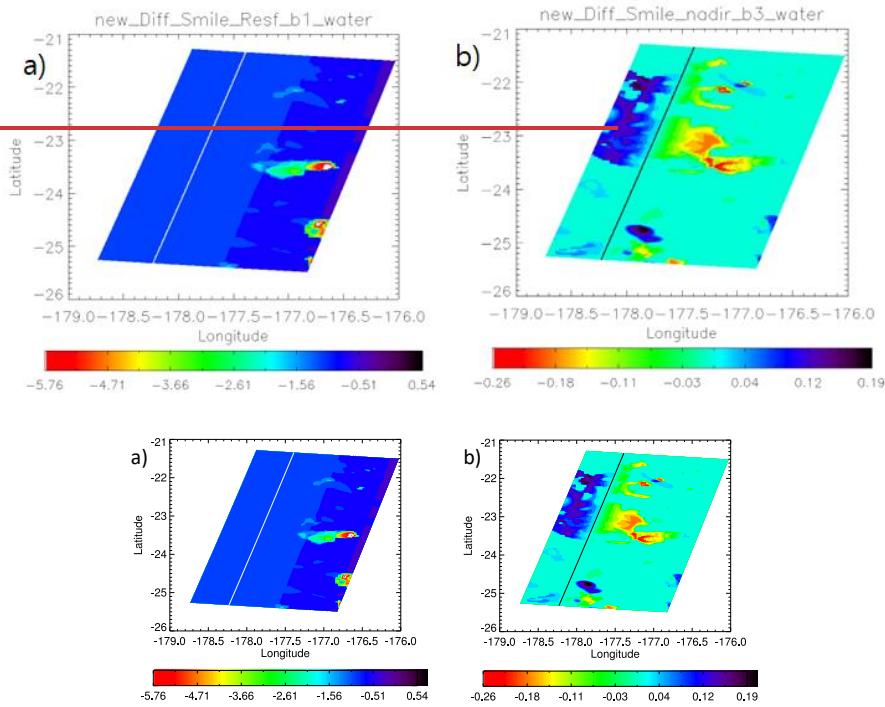


Figure 11. Examples of differences between MSI signal with a fixed the response function on the nadir and with the smile effect for the 0.67  $\mu\text{m}$  (Band 1) (a) and 1.65  $\mu\text{m}$  (Band 3) (b) channels over the ocean, for the descending mode where the satellite is moving southwestward. The base is the MSI signal with the response function on the nadir. The solid line is the location of the nadir. The units of contours are radiances ( $\text{W}\cdot\text{m}^{-2}\cdot\text{str}^{-1}\cdot\mu\text{m}^{-1}$ ).

서식 지정함: 위첨자

서식 지정함: 위첨자

서식 지정함: 글꼴 Symbol

서식 지정함: 위첨자

### 3.4 BBR

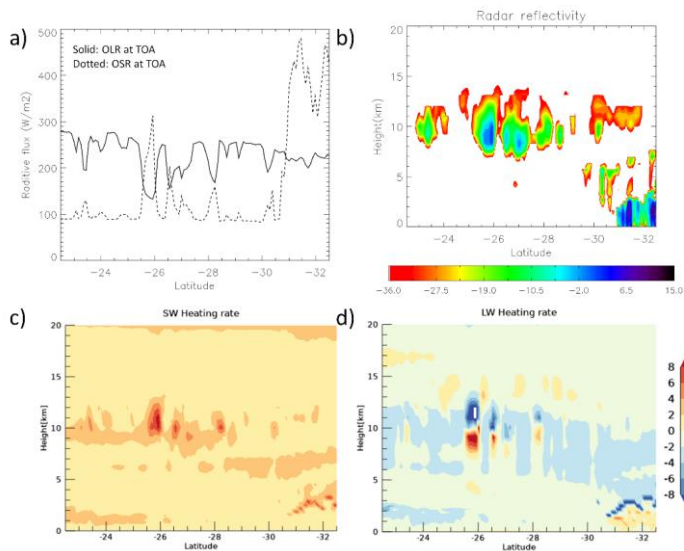
BBR has two channels of 0.25 and 50  $\mu\text{m}$  for observing-estimating the total radiative flux at the top of the atmosphere (TOA) and 0.25 and 4  $\mu\text{m}$  for the short-wave radiative flux at TOA with 10 km horizontal sampling. The long-wave flux at TOA is obtained by subtracting the short-wave flux from the total flux. There are three view modes of nadir, forward, and backward in the BBR. Only the nadir mode was calculated for the JAXA L1 data.

285 Radiative fluxes were simulated by MSTRN-X (Sekiguchi and Nakajima, 2008). MSTRN-X uses two-stream approximation and the correlated k-distribution (CKD) methods to model gas absorption using quadrature points and weights. MSTRN-X considers 28 species compiled in HITRAN2004, and the radiative transfer solver uses a two-stream approximation. MSTRN-X is also used as the radiation scheme for NICAM simulations (Satoh et al., 2014). We did not consider the radiative effect of aerosols in the NICAM simulation, so we calculated aerosol transport using NICAM-SPRINTARS with coarse resolution. BBR data are produced using simulated data with aerosols.

290 BBR data comprise short-wave and long-wave fluxes with downward and upward directions at TOA and the surface; these data are to be used for validation. We also added vertical profiles of short-wave/long-wave heating rates with 500 m vertical resolution, and the optical depth at 532 nm.

BBR data are intended to be used to evaluate the radiative transfer calculation from retrieved products of vertical profiles of clouds and aerosols. Examples of BBR data and their relation to the CPR signals in JAXA L1 data are shown in Fig. 12. Multi-layer clouds were located in the southern part of the orbit between 32°S and 30°S (Fig. 12a, b), where the outward short-wave fluxes at TOA are large due to the multi-layer clouds having stronger reflectance than cirrus clouds. Short-wave heating in upper cloud layers and long-wave heating/cooling near the cloud layers are reasonably simulated (Fig. 12c, d). Note that the horizontal resolution of CPR is 500 m and differs from the resolution of the BBR signals, where the short-wave/long-wave heating rates are calculated with a 10 km resolution.

300



305 **Figure 12.** Examples of BBR simulations (a) and corresponding CPR signals (b). Short-wave (c) and long-wave (d) radiative heating rates are also provided as JAXA L1 data for use in validation. The units of contours are dBZ (b) and  $K \cdot day^{-1}$  (c, d)

서식 지정함: 위 참조아래 첨자없음

서식 지정함: 글꼴: 없게 없음

#### 4 Future improvementsDiscussion

We have introduced the JAXA simulated EarthCARE L1 data that are currently distributed to L2 algorithm developers. Although these data are useful, we have plans for improvement, as discussed below.

##### 4.1 High-resolution experiments

310 The EarthCARE CPR has a larger sampling volume than the ground observation and a fast movement. The inhomogeneous distribution of hydrometeors within the instantaneous field of view (IFOV) caused significant Doppler velocity biases (Schutgens 2007; Kollias et al., 2018). The effect of the inhomogeneous distribution in the IFOV on the Doppler velocity is different in along the track direction, and is referred to as the non-uniform beam filling effects (NUBFs). The impact of NUBFs on the Doppler velocity accuracy should be investigated for its improvement. The movement of the EarthCARE satellite affects the Doppler velocity measurement by CPR. This means there are more variations in Doppler velocity in horizontal sampling as, for example, with positive Doppler velocity in the forward part of horizontal sampling and negative velocity in the backward part. The weighting of Doppler velocity in horizontal sampling differs with the shape of the antenna, and non-uniform beam filling effects (NUBFs) on the accuracy of Doppler velocity should be investigated and means found for its improvement.

서식 지정함: 글꼴 색 자동

320 The NICAM simulation was undertaken using a 3.5 km horizontal resolution over the global domain for JAXA L1 data. However, simulation data with higher resolution than the horizontal CPR sample are desirable for L2 algorithm developers, and not necessarily for the global domain. Therefore, we undertook a regional high-resolution simulation using ASUCA (A System based on a Unified Concept for the Atmosphere; Ishida et al., 2022). ASUCA is a regional operational model of the Japan Meteorological Agency (JMA). We conducted a simulation using 100 m horizontal resolution with ASUCA over the

325 Kanto area within the ULTIMATE (ULTra-sIte for Measuring Atmosphere of Tokyo metropolitan Environment) research project (Sato et al., 2022). We prepared three cases in September 2019, covering an intensive observation period by cloud radar from ground level.

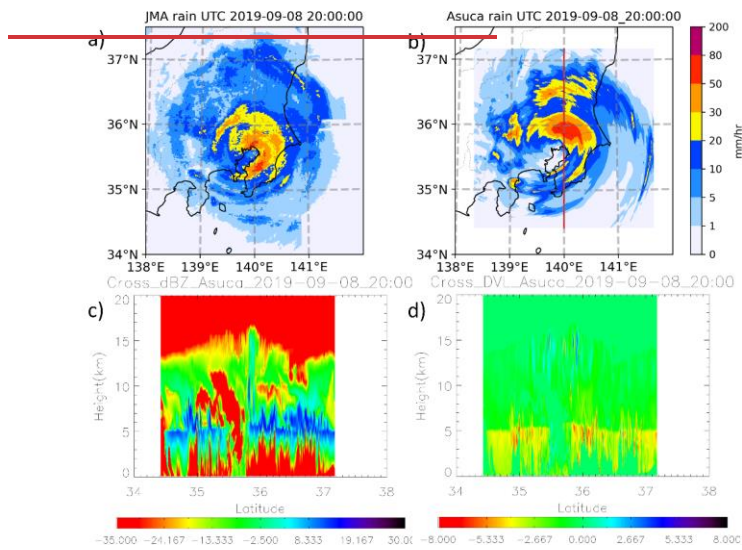
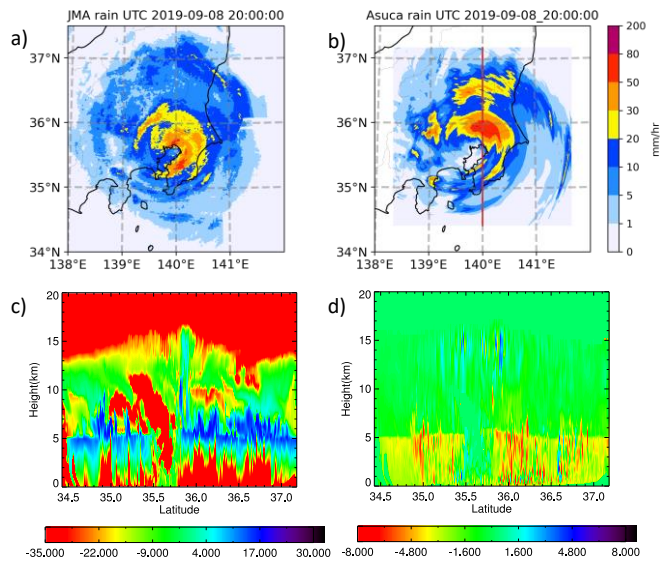
Horizontal distributions of precipitation between ground radar observations and the ASUCA simulation are shown in Fig. 13 for Typhoon Faxai. ASUCA reproduced detailed structures of rain bands similar to observations. The Joint-Simulator

330 simulated the cross-section of radar reflectivity and Doppler velocity of EarthCARE (Fig. 13c, d). The higher-resolution experiment reproduced a more detailed structure of the eyewall system of the cyclone, but the domain size was limited by computational resources. These data were used in the production of new JAXA L1 data to investigate NUBFs of CPR as the

research product. We evaluated the ASUCA simulations using intensive ground observations, data from which are also helpful in validation of the EarthCARE satellite after launch.

335

**저석 있음:** 양쪽 들여쓰기 첫 줄 0.5 글자, 지정한 문자 수에 맞춰 오른쪽 들여쓰기 자동 조정, 한글과 영어 간격을 자동으로 조절, 한글과 숫자 간격을 자동으로 조절



340 **Figure 13.** Example of the ASUCA simulation for Typhoon Faxai, with horizontal distributions of observed precipitation (a), the ASUCA simulation (b), cross-sections of radar reflectivity (c), and Doppler velocity (d). (c) and (d) pertain to the red line in (b). The units of contours are  $\text{mm}\cdot\text{hr}^{-1}$  (a, b),  $\text{dBZ}$  (c), and  $\text{m}\cdot\text{s}^{-1}$  (d).

서식 지정함: 위 참조

#### 345 4.2 3D radiation

In the EarthCARE research product, 3D cloud fields will be constructed using the three sensors CPR, ATLID, and MSI. Currently, JAXA L1 data are based on a 1D radiation calculation, which has limitations in representing scattering properties in 3D cloud fields. For study of the effect of 3D fields, 3D radiation calculations are needed. Okata et al. (2016) developed the 3D radiation model (MCstar) using a Monte Carlo method and investigated the 3D radiation effect of 3D cloud fields constructed by CPR of CloudSat and Moderate Resolution Imaging Spectroradiometer/Aqua data on the A-train. We plan to implement MCstar in the Joint-Simulator and produce new MSI and BBR L1 data based on the 3D radiation calculation with high-resolution simulation data. Input data of MCstar will be the ASUCA simulation with 100 m horizontal resolution.

서식 있음: 캡션

### 5 Summary

355 JAXA EarthCARE synthetic data (JAXA L1 data) were compiled using the global storm-resolving model (GSRM) NICAM simulation with 3.5 km horizontal resolution, and the Joint-Simulator. JAXA L1 data are intended to support the development of JAXA retrieval algorithms for the EarthCARE sensor before launch of the satellite. The expected orbit of EarthCARE and horizontal sampling of each sensor were used to simulate the signals. EarthCARE has four instruments: a 94 GHz Cloud profiling radar (CPR), a 355 nm Atmospheric lidar (ATLID), a seven-channel Multispectral imager (MSI), and a Broadband radiometer (BBR).

The EarthCARE CPR is the first atmospheric radar in space with Doppler capability. It has better radar sensitivity with a larger antenna than the previous CPR aboard CloudSat. JAXA L1 data are considered using the same vertical and horizontal sampling as CPR. Surface clutter over both the ocean and land was added based on the response function of CPR in the research product. Expected random errors in Doppler velocity were considered based on three observation windows (Hagihara et al., 2021).

365 ATLID is the 355nm high-spectral-resolution lidar with three channels: the Mie channel with co-polarization, the Rayleigh channel with co-polarization, and the total channel (Mie + Rayleigh channels) with cross-polarization. JAXA L1 data include these three data channels related to clouds, aerosols, and atmospheric molecules. The Mie channel with co-polarization is related to clouds and aerosols, and the Rayleigh channel to scattering from atmospheric molecules. For validations, extinction

서식 있음: 제목 1

coefficients were separated between clouds and aerosols. The 534 nm backscatter was also simulated for comparison with CALIPSO. ATLID data were considered with random noise based on instrument settings for the research product.

MSI is the multi-spectral imager for the observation of emitted infrared and reflected solar radiances and is used to construct 3D cloud scenes using two active sensors. MSI data are calculated using fixed-wavelength data as default data. We investigated the smile-SMILE effect using the research product for 0.67 and 1.65  $\mu\text{m}$  wavelengths, with data based on the response function depending on pixel number.

The BBR is a multi-angle broadband radiometer with three telescopes with nadir, forward, and backward modes. MSI test data have only the nadir mode and are simulated by the same radiation code as that of NICAM, with 10 km horizontal sampling. Optical depth and vertical profiles of heating rate for shortwave and longwave radiation were added.

We have plans for improvement of the JAXA L1 data for the investigation of NUBFs on the accuracy of Doppler velocity. Higher-resolution data are required for the distribution of Doppler velocities with  $<500$  m horizontal sampling size. We undertook regional simulations with 100 m horizontal resolution over the Kanto region of Japan to produce new JAXA L1 data. To investigate the 3D radiation effect, we will add a 3D radiation model to the Joint-Simulator and introduce MSI and BBR data for 3D radiation to the research product.

After the launch of EarthCARE, its data will provide new insights for the evaluation and improvement of GSRMs. According to the first GSRM intercomparison study, vertical profiles of cloud ice and water vary among models, although the horizontal distribution of OLR is consistent (Roh et al., 2021). EarthCARE can provide more detailed information on the vertical distribution of hydrometeors, with two active sensors of CPR and ATLID for the validation of GSRMs.

The production of JAXA L1 data is related to the development of the Joint-Simulator, which has been updated with detailed settings of instrument information for EarthCARE. These updates will improve our understanding of uncertainties in observations and retrieved values. Roh et al. (2022,2023) compared two microphysics schemes using a CPR on the ground and the expected CPR of EarthCARE using the Joint-Simulator and found the expected Doppler velocity of EarthCARE from the low-window mode would be better for evaluating the characteristics of cloud microphysics schemes consistent with ground observation data.

Satellite remote sensing data have been fruitful in understanding clouds and aerosols. However, it is difficult to interpret the radiances or signals from the sensors. Most of the modeling community uses the retrieved product from the satellite data such as precipitation. This study implies how to understand the directly observed signals and their uncertainty from simulations of the specific instruments of the EarthCARE satellite. This research would be helpful for the modeling community to improve and constrain the physical parameter in the model using satellite observations.

서식 지정함: 글꼴 (한글) 바탕, (한글) 한국어



#### *Data availability*

The standard products of the JAXA ~~We can share~~ EarthCARE synthetic data are available from <https://doi.org/10.5281/zenodo.7835229> (Roh et al. 2023). The CPR data with random errors of Doppler velocity in operation and surface clutters are also added in the same [zonodu site](https://doi.org/10.5281/zenodo.7835229). Please email [ws-roh@aori.u-tokyo.ac.jp](mailto:ws-roh@aori.u-tokyo.ac.jp) if interested. The Joint-Simulator is available from [https://www.eorc.jaxa.jp/theme/Joint-Simulator/userform/js\\_userform.html](https://www.eorc.jaxa.jp/theme/Joint-Simulator/userform/js_userform.html).

#### *Author contributions*

WR drafted the manuscript and produced the JAXA L1 data. MS checked the manuscript and helped with the production of JAXA L1 data. HT developed the Joint-Simulator and supported JAXA L1 data production. SM did the ASUCA simulations. TN did a global storm-resolving simulation data using NICAM. TK led the Joint-Simulator development and provided feedback on the manuscript draft.

#### *Competing interests*

The authors declare that they have no conflicts of interest.

#### *Acknowledgements*

The authors thank members of the JAXA EarthCARE Science Team and the Joint-Simulator project. The authors also thank to ESA for providing the measured value of response functions of EarthCARE/MSI. The authors thank Dr. Toshi Matsui for providing the orbit/scan simulator. Computational resources were partly provided by the National Institute for Environmental Studies.

#### *Financial support*

This work was supported by the EarthCARE satellite study commissioned by the Japan Aerospace Exploration Agency. MS and WR were supported by a Grant-in-Aid for Scientific Research B (20H01967) and the Program for Promoting Technological Development of Transportation of the Ministry of Land, Infrastructure, Transport, and Tourism (MLIT).

#### **References**

Bodas-Salcedo, A., Webb, M. J., Bony, S., Chepfer, H., Dufresne, J., Klein, S. A., Zhang, Y., Marchand, R., Haynes, J. M., Pincus, R., and John, V. O.: COSP: Satellite simulation software for model assessment, *Bull. Am. Meteorol. Soc.*, 92(8), 1023–1043, 2011.

430 Hagihara, Y., Ohno, Y., Horie, H., Roh, W., Satoh, M., Kubota, T., and Oki, R.: Assessments of Doppler velocity errors of EarthCARE cloud profiling radar using global cloud system resolving simulations: Effects of Doppler broadening and folding, *IEEE Trans. Geosci. Remote Sens.*, 60, 1–9, <https://doi.org/10.1109/TGRS.2021.3060828>, 2022.

Hagihara, Y., Okamoto, H., and Yoshida, R.: Development of a combined CloudSat-CALIPSO cloud mask to show global cloud distribution, *J. Geophys. Res. Atmos.*, 115, D00H33, <https://doi.org/10.1029/2009JD012344>, 2010.

435 Hagihara, Y., Ohno, Y., Horie, H., Roh, W., Satoh, M., and Kubota, T.: Global evaluation of Doppler velocity errors of EarthCARE Cloud Profiling Radar using global storm-resolving simulation, *EGUsphere* [preprint], <https://doi.org/10.5194/egusphere-2022-1255>, 2022.

Hashino, T., Satoh, M., Hagihara, Y., Kubota, T., Matsui, T., Nasuno, T., and Okamoto, H.: Evaluating cloud microphysics from NICAM against CloudSat and CALIPSO, *J. Geophys. Res. Atmos.*, 118, 7273–7292, <https://doi.org/10.1002/jgrd.50564>,

440 2013.

Hashino, T., Satoh, M., Hagihara, Y., Kato, S., Kubota, T., Matsui, T., and Sekiguchi, M.: Evaluating Arctic cloud radiative effects simulated by NICAM with A-train, *J. Geophys. Res. Atmos.*, 121(12), 7041–7063, 2016.

Illingworth, A. J., Barker, H. W., Beljaars, A., Ceccaldi, M., Chepfer, H., Clerbaux, N., Cole, J., Delanoë, J., Domenech, C., Donovan, D. P., Fukuda, S., Hirakata, M., Hogan, R. J., Huenerbein, A., Kollias, P., Kubota, T., Nakajima, T., Nakajima, T.

445 Y., Nishizawa, T., Ohno, Y., Okamoto, H., Oki, R., Sato, K., Satoh, M., Shephard, M. W., Velázquez-Blázquez, A., Wandinger, U., Wehr, T., and Van Zadelhoff, G. J.: The EarthCARE satellite: The next step forward in global measurements of clouds, aerosols, precipitation, and radiation, *Bull. Am. Meteorol. Soc.*, 96, 1311–1332, <https://doi.org/10.1175/BAMS-D-12-00227.1>, 2015.

Ishida, J., Aranami, K., Kawano, K., Matsubayashi, K., Kitamura, Y., and Muroi, C.: ASUCA: the JMA operational non-

450 hydrostatic model, *J. Meteor. Soc. Japan*, 100, 825–846, <https://doi.org/10.2151/jmsj.2022-043>, 2022.

Ishimoto, H., and Masuda, K.: A Monte Carlo approach for the calculation of polarized light: application to an incident narrow beam, *J. Quant. Spectr. Rad. Trans.*, 72(4), 467–483, 2002.

Kubota, T., S. Seto, M. Satoh, T. Nasuno, T. Iguchi, T. Masaki, J. M. Kwiatkowski, and R. Oki: Cloud assumption of precipitation retrieval algorithms for the Dual-Frequency Precipitation Radar. *J. Atmos. Oceanic Technol.*, 37, 2015–2031,

455 2020.

[Kollias, P., Battaglia, A., Tatarevic, A., Lamer, K., Tridon, F., and Pfizenmaier, L.: The EarthCARE cloud profiling radar \(CPR\) doppler measurements in deep convection: challenges, post-processing, and science applications. \*Remote sensing of the atmosphere, clouds, and precipitation VII\*. SPIE, 57-68, 2018](#)

저석 지정함: 글꼴 기술입력 없음

- 460 Masunaga, H., Satoh, M., and Miura, H.: A joint satellite and global cloud-resolving model analysis of a Madden-Julian Oscillation event: Model diagnosis, *J. Geophys. Res. Atmos.*, 113(D17), 2008.
- Masunaga, H., Matsui, T., Tao, W. K., Hou, A. Y., Kummerow, C. D., Nakajima, T., ... & Nakajima, T. Y.: Satellite data simulator unit: a multisensor, multispectral satellite simulator package, *Bull. Am. Meteorol. Soc.*, 91, 1625–1632. <https://doi.org/10.1175/2010BAMS2809.1>, 2010.
- 465 Matsui, T.: Chapter 12 in *Mesoscale Modeling and Satellite Simulator*, Mesoscale Meteorological Modeling. 3rd Edition, R. A. Pielke Sr. Ed. Academic Press, 760 p, ISBN: 9780123852373, 2013.
- Matsui, T., Santanello, J., Shi, J. J., Tao, W. K., Wu, D., Peters-Lidard, C., ... & Aires, F.: Introducing multisensor satellite radiance-based evaluation for regional Earth System modeling, *J. Geophys. Res. Atmos.*, 119, 8450–8475. <https://doi.org/10.1002/2013JD021424>, 2014.
- 470 Matsui, T., J. Chern, W.-K. Tao, S. Lang, M. Satoh, T. Hashino, and T. Kubota: On the land-ocean contrast of tropical convection and microphysics statistics derived from TRMM satellite signals and global storm-resolving models. *Journal of Hydrometeorology*, 17 (5), 1425-1445, 2016.
- Nakanishi, M. and Niino, H.: Development of an improved turbulence closure model for the atmospheric boundary layer, *J. Meteorol. Soc. Japan, Ser. II*, 87(5), 895–912, 2009.
- 475 Nakajima, T. and Tanaka, M.: Matrix formulations for the transfer of solar radiation in a plane-parallel scattering atmosphere, *J. Quant. Spectr. Rad. Transfer*, 35(1), 13–21, 1986.
- Nakajima, T. and Tanaka, M.: Algorithms for radiative intensity calculations in moderately thick atmospheres using a truncation approximation. *J. Quant. Spectr. Rad. Transfer*, 40(1), 51–69, 1988.
- Nasuno, T., Yamada, H., Nakano, M., Kubota, H., Sawada, M. and R. Yoshida, R.: Global cloud-permitting simulations of Typhoon Fengshen (2008). *Geosci. Lett.* 3, 32. <https://doi.org/10.1186/s40562-016-0064-1>, 2016.
- 480 Nishizawa, T., Okamoto, H., Takemura, T., Sugimoto, N., Matsui, I., & Shimizu, A.: Aerosol retrieval from two-wavelength backscatter and one-wavelength polarization lidar measurement taken during the MR01K02 cruise of the R/V Mirai and evaluation of a global aerosol transport model, *J. Geophys. Res.*, 113, D21201, <https://doi.org/10.1029/2007JD009640>, 2008.
- Okamoto, H., Nishizawa, T., Takemura, T., Kumagai, H., Kuroiwa, H., Sugimoto, N., ... & Nakajima, T.: Vertical cloud structure observed from shipborne radar and lidar: mid-latitude case study during the MR01/K02 cruise of the R/V Mirai, *J. Geophys. Res.*, 112, D08216, <https://doi.org/10.1029/2006JD007628>, 2007.
- 485 Okamoto, H., Nishizawa, T., Takemura, T., Sato, K., Kumagai, H., Ohno, Y., ... & Nakajima, T.: Vertical cloud properties in the tropical western Pacific Ocean: Validation of the CCSR/NIES/FRCGC GCM by shipborne radar and lidar, *J. Geophys. Res.*, 113, D24213, <https://doi.org/10.1029/2008JD009812>, 2008.
- 490 Okata, M., Nakajima, T., Suzuki, K., Inoue, T., Nakajima, T. Y., and Okamoto, H.: A study on radiative transfer effects in 3-D cloudy atmosphere using satellite data, *J. Geophys. Res. Atmos.*, 122(1), 443-468, 2017.

Platnick, S., Meyer, K. G., King, M. D., Wind, G., Amarasinghe, N., Marchant, B., ... & Riedi, J.: The MODIS Cloud Optical and Microphysical Products: Collection 6 Updates and Examples From Terra and Aqua, *IEEE Tran. Geosci. Rem.*, 55, 502–525, 2017.

- 495 Satoh, M., Roh, W., and Hashino, T.: Evaluations of clouds and precipitations in NICAM using the Joint Simulator for Satellite Sensors, *CGER Supercomput. Monogr. Rep.*, 22, 110 pp, ISSN 1341-4356, CGER-I127-2016, 2016.
- Sekiguchi, M. and Nakajima, T.: A k-distribution-based radiation code and its computational optimization for an atmospheric general circulation model, *J. Quant. Spectr. Rad. Transfer*, 109(17–18), 2779–2793, 2008.
- Roh, W. and Satoh, M.: Evaluation of precipitating hydrometeor parameterizations in a single-moment bulk microphysics scheme for deep convective systems over the tropical central Pacific, *J. Atmos. Sci.*, 71, 2654–2673, <https://doi.org/10.1175/JAS-D-13-0252.1>, 2014.
- 505 Roh, W., Satoh, M., and Nasuno, T.: Improvement of a cloud microphysics scheme for a global nonhydrostatic model using TRMM and a satellite simulator, *J. Atmos. Sci.*, 74, 167–184, <https://doi.org/10.1175/JAS-D-16-0027.1>, 2017.
- Roh, W. and Satoh, M.: Extension of a multisensor satellite radiance-based evaluation for cloud system resolving models, *J. Meteor. Soc. Japan*, 96, 55–63, <https://doi.org/10.2151/jmsj.2018-002>, 2018.
- 515 Roh, W., Satoh, M., Hashino, T., Okamoto, H., and Seiki, T.: Evaluations of the thermodynamic phases of clouds in a cloud-system-resolving model using CALIPSO and a satellite simulator over the Southern Ocean, *J. Atmos. Sci.*, 77, 3781–3801, <https://doi.org/10.1175/JAS-D-19-0273.1>, 2020.
- [Roh, W., Satoh, M., Hashino, T., Matsugishi, S., Nasuno, T., and Kubota, T.: The JAXA EarthCARE synthetic data using a global storm resolving simulation. <https://doi.org/10.5281/zenodo.7835229>. 2023.](https://doi.org/10.5281/zenodo.7835229)
- 510 Satoh, M., Matsuno, T., Tomita, H., Miura, H., Nasuno, T., and Iga, S.: Nonhydrostatic icosahedral atmospheric model (NICAM) for global cloud resolving simulations, *J. Comput. Phys.*, 227, 3486–3514, <https://doi.org/10.1016/j.jcp.2007.02.006>, 2008.
- Satoh, M., Inoue, T., and Miura, H.: Evaluations of cloud properties of global and local cloud system resolving models using CALIPSO and CloudSat simulators, *J. Geophys. Res. Atmos.*, 115(D4), 2010.
- 515 Satoh, M., Tomita, H., Yashiro, H., Miura, H., Kodama, C., Seiki, T., Noda, A. T., Yamada, Y., Goto, D., Sawada, M., Miyoshi, T., Niwa, Y., Hara, M., Ohno, T., Iga, S., Arakawa, T., Inoue, T., and Kubokawa, H.: The Non-hydrostatic Icosahedral Atmospheric Model: description and development, *Prog. Earth Planet. Sci.*, 1, 18. doi:10.1186/s40645-014-0018-1, 2014.
- Satoh, M., Roh, W., and Hashino, T.: Evaluations of clouds and precipitations in NICAM using the Joint Simulator for Satellite Sensors, *CGER Supercomput. Monogr. Rep.*, 22, 110, <https://doi.org/CGER-I127-2016>, 2016.
- 520 Satoh, M., Stevens, B., Judt, F., Khairoutdinov, M., Lin, S. J., Putman, W. M., and Düben, P.: Global cloud-resolving models. *Curr. Clim. Change Rep.*, 5(3), 172–184, 2019.
- Satoh, M., Matsugishi, S., Roh, W., Ikuta, Y., Kuba, N., Seiki, T., Hashino, T., and Okamoto, H.: Evaluation of cloud and precipitation processes in regional and global models with ULTIMATE (ULTra-sIte for Measuring

- 525 Atmosphere of Tokyo metropolitan Environment): A case study using the dual-polarization Doppler weather radars. *Prog. Earth. Planet. Sci.*, 9, 41, doi:10.1186/s40645-022-00511-5, 2022.
- Saunders, R., Hocking, J., Turner, E., Rayer, P., Rundle, D., Brunel, P., Vidot, J., Roquet, P., Matricardi, M., Geer, A., Bormann, N., and Lupu, C.: An update on the RTTOV fast radiative transfer model (currently at version 12), *Geosci. Model Dev.*, 11, 2717–2737, <https://doi.org/10.5194/gmd-11-2717-2018>, 2018.
- 530 [Schutgens, N. A. J.: Simulated Doppler radar observations of inhomogeneous clouds: Application to the EarthCARE space mission. \*J. Atmos. Oceanic Technol.\*, 2008, 25.1: 26-42.](#)
- Stephens, G. L., Vane, D. G., Boain, R. J., Mace, G. G., Sassen, K., Wang, Z., and Mitrescu, C.: The CloudSat mission and the A-Train: A new dimension of space-based observations of clouds and precipitation, *Bull. Am. Meteorol. Soc.*, 83(12), 1771–1790, 2002.
- 535 Stevens, B., Satoh, M., Auger, L., Biercamp, J., Bretherton, C. S., Chen, X., ... & Zhou, L.: DYAMOND: the DYNAMics of the Atmospheric general circulation Modeled On Non-hydrostatic Domains, *Prog. Earth Planet. Sci.*, 6, <https://doi.org/10.1186/s40645-019-0304-z>, 2019.
- Takemura, T., Okamoto, H., Maruyama, Y., Numaguti, A., Higurashi, A., and Nakajima, T.: Global three-dimensional simulation of aerosol optical thickness distribution of various origins, *J. Geophys. Res. Atmos.*, 105(D14), 17853–17873, 2000.
- 540 Tomita, H. and Satoh, M.: A new dynamical framework of nonhydrostatic global model using the icosahedral grid, *Fluid Dyn. Res.*, 34, 357–400, <https://doi.org/https://doi.org/10.1016/j.fluiddyn.2004.03.003>, 2004.
- Tomita, H.: New microphysical schemes with five and six categories by diagnostic generation of cloud ice. *J. Meteorol. Soc. Japan*, 86, 121–142. <https://doi.org/10.2151/jmsj.86A.121>, 2008.
- 545 Moncrieff, M. W., Waliser, D. E., Miller, M. J., Shapiro, M. A., Asrar, G. R., and Caughey, J. Multiscale convective organization and the YOTC virtual global field campaign, *Bull. Am. Meteor. Soc.*, 93(8), 1171–1187, 2012.
- Yamada H., T. Nasuno, W. Yanase, M. Satoh: Role of the vertical structure of a simulated tropical cyclone in its motion: a case study of Typhoon Fengshen (2008). *Sci. Online Lett. Atmos.*, 12, 203–208. doi:10.2151/sola.2016-041, 2016.
- Wang, M., Nakajima, T. Y., Roh, W., Satoh, M., Suzuki, K., Kubota, T., and Yoshida, M.: Evaluation of the smile effect on the Earth Clouds, Aerosols and Radiation Explorer (EarthCARE)/Multi-Spectral Imager (MSI) cloud product, *EGUsphere* [preprint], <https://doi.org/10.5194/egusphere-2022-736>, 2022.
- 550 Wehr, T., et al. 2023: The EarthCARE Mission - Science and System Overview, submitted to the AMT.