

# Drone CO<sub>2</sub> Measurements During the Tajogaite Volcanic Eruption

John Ericksen<sup>1</sup>, Tobias P. Fischer<sup>2</sup>, G. Matthew Fricke<sup>1</sup>, Scott Nowicki<sup>2</sup>, Nemesio M. Pérez<sup>3</sup>, Pedro Hernández Pérez<sup>3</sup>, Eleazar Padrón González<sup>3</sup>, and Melanie E. Moses<sup>1,4</sup>

<sup>1</sup>Computer Science Department, University of New Mexico, Albuquerque, New Mexico, USA

<sup>2</sup>Department of Earth and Planetary Sciences, University of New Mexico, Albuquerque, New Mexico, USA

<sup>3</sup>Instituto Volcanológico de Canarias (INVOLCAN), Tenerife, Islas Canarias, Spain

<sup>4</sup>Santa Fe Institute, Santa Fe, New Mexico, USA

**Correspondence:** Tobias P. Fischer (fischer@unm.edu), G. Matthew Fricke (mfricke@unm.edu)

**Abstract.** We report in-plume carbon dioxide (CO<sub>2</sub>) concentrations and carbon isotope ratios during the 2021 eruption of Tajogaite Volcano, La Palma Island, Spain. CO<sub>2</sub> measurements inform our understanding of volcanic contributions to the global climate carbon cycle and the role of CO<sub>2</sub> in eruptions. Traditional ground-based methods of CO<sub>2</sub> collection are difficult and dangerous and as a result only about 5% of volcanoes have been directly surveyed. We demonstrate that UAS surveys allow for fast and relatively safe measurements. Using CO<sub>2</sub> concentration profiles we estimate the total flux during several measurements in November 2021 to be  $4.59 \pm 0.46 \times 10^3$  to  $2.85 \pm 0.28 \times 10^4$  t day<sup>-1</sup>. Carbon isotope ratios of plume CO<sub>2</sub> indicate a deep magmatic source, consistent with the intensity of the eruption. Our work demonstrates the feasibility of UAS for CO<sub>2</sub> surveys during active volcanic eruptions, particularly for deriving rapid emission estimates.

## 1 Introduction

Measurements of volcanic CO<sub>2</sub> emissions during eruptions are critical for understanding magma and eruption dynamics. CO<sub>2</sub> is a significant greenhouse gas (Arrhenius, 1896) and making measurement of CO<sub>2</sub> emissions is important for climate science. CO<sub>2</sub> gas is second only to water vapor in abundance in volcanic emissions (Giggenbach, 1996). Despite the significance and abundance of CO<sub>2</sub> in the Earth System in general and in magmatic systems in particular, measuring the emission rates of this gas from volcanic craters, diffuse sources, and low-level hydrothermal sites has remained a major challenge (Fischer and Aiuppa, 2020). As a result, detailed CO<sub>2</sub> surveys have been conducted at just 5% of volcanoes (Fischer et al., 2019).

The main contributions of this work are that, for the first time, we estimate CO<sub>2</sub> flux using direct in-plume CO<sub>2</sub> measurements rather than using in-plume CO<sub>2</sub> to SO<sub>2</sub> ratios combined with separately measured SO<sub>2</sub> emissions. The second major contribution is that we perform in-situ gas sample-return during a major volcanic eruption for carbon isotope measurements. We use the Dragonfly Unpiloted Aerial System (UAS) (Ericksen et al., 2022) to gather samples directly from the eruption plume (Figure 1). The UAS transects the plume and employs an onboard infrared (IR) sensor to continuously obtain concentration readings. These readings are then used to estimate a 2D isotropic Gaussian concentration model. In-plume wind speed measurements in combination with the plume model allow us to estimate CO<sub>2</sub> flux. While our technique has similarities to the ‘ladder traverse’ technique utilizing large in-situ sensing equipment mounted on a piloted fixed-wing aircraft (Werner et al.,



**Figure 1.** A Dragonfly UAS returning from a CO<sub>2</sub> sample mission during the November 2021 eruption of Tajogaite volcano. The large volcanic ash plume is visible in the background and contains an invisible CO<sub>2</sub> plume, which was the mapping target of this drone.

2013), it has the obvious advantages of being much less costly, logistically less challenging, and less hazardous. Since our  
25 approach extrapolates the shape of the plume it requires far fewer plume transects. Crucially, the Dragonfly UAS does not use  
a combustion engine, which previous work has shown to contaminate CO<sub>2</sub> measurements and samples with jet-fuel derived  
organic carbon (Fischer and Lopez, 2016). The resulting plume CO<sub>2</sub> concentration profile is used to guide the UAS to a pro-  
ductive sample return location of maximum concentration. Carbon isotope analyses of the samples reveal information, such  
as CO<sub>2</sub> source, which is relevant to predicting the course of the eruption. We tested this technique during the 2021 Tajogaite  
30 volcanic eruption on La Palma Island, Spain, and compared the resulting flux estimates to the traditional ground-based CO<sub>2</sub>  
to SO<sub>2</sub> ratio method. As we demonstrate, UASs provide a method for obtaining in-plume gas samples, concentrations, and  
wind velocity measurements. Together these data allow isotope ratios to be determined and estimation of CO<sub>2</sub> flux, furthering  
our understanding of volcano dynamics during an eruption and allowing predictions of eruption intensity and duration. Our  
technique can be widely used at passively degassing and erupting volcanoes to obtain near-real-time CO<sub>2</sub> flux measurements  
35 to better constrain the global volcanic CO<sub>2</sub> budget, and assess volcanic activity.

## 1.1 Related Work

While global initiatives to directly determine CO<sub>2</sub> flux from biogenic sources, i.e. FLUXNET (Office of Science, US DOE,  
2023) have advanced our understanding of the surface carbon cycle, estimates of volcanic flux are to a large extent obtained  
by combining SO<sub>2</sub> flux measurements with observed CO<sub>2</sub> to SO<sub>2</sub> ratios (Fischer and Aiuppa, 2020). This approach relies on  
40 two separate sets of measurements utilizing a ground-based or space-based remote sensing technique to determine the SO<sub>2</sub>  
concentration of the volcanic plume and a direct sampling or sensing technique to determine the CO<sub>2</sub> to SO<sub>2</sub> ratio. In almost  
all cases, these two separate sets of measurements are not made simultaneously and result in intrinsic uncertainties in CO<sub>2</sub> flux  
estimates (Burton et al., 2013). CO<sub>2</sub> surveys have been performed using satellite-based approaches, for example, Johnson et al.

(2020) performed CO<sub>2</sub> flux estimates of the 2018 Kilauea Volcano. Their work utilized the Orbiting Carbon Observatory -2  
45 (OCO-2) to measure the CO<sub>2</sub> emissions from the 2018 Kīlauea eruption. A measurement of  $77.1 \pm 41.6$  kt/day was obtained during the one day of observations where conditions enabled the collection of consistent high-quality data. Cloud coverage and aerosol are the major inhibitors for obtaining consistent CO<sub>2</sub> data using OCO-2. In addition, the wind direction must be near perpendicular to the satellite's orbit path and the measurements must be made down-wind from the plume. The OCO-2 16-day repeat cycle currently makes this method impractical for frequent, high-rate CO<sub>2</sub> flux measurements from erupting volcanoes  
50 and the only other successful volcanic CO<sub>2</sub> emission study was by Schwandner et al. (2017) of Yasur in Vanuatu. Therefore, space-based CO<sub>2</sub> instruments require favorable atmospheric conditions and satellite positioning and are not yet feasible for volcano monitoring (Schwandner et al., 2017).

The value of UAS surveys of volcanic emissions was recognized by Xi et al. (2016) who surveyed passive degassing SO<sub>2</sub> at Turrialba volcano, Costa Rica and estimated SO<sub>2</sub> flux. Other investigators have used UAS to measure plume SO<sub>2</sub> and collect  
55 plume trace gases (Rüdiger et al., 2018) or use miniDOAS systems mounted on UAV to obtain SO<sub>2</sub> fluxes (Stix et al., 2018). Recently UAS have been used to collect gas samples and measure gas compositions volcanic plumes from passively degassing volcanoes in remote regions (Liu et al., 2020; Galle et al., 2021).

Gerlach et al. (1997) and Werner et al. (2013) estimate plume CO<sub>2</sub> flux using the parsimonious assumption that plumes are uniform. They use the mean value to estimate the flux whereas we use our observations in the field that support the hypothesis  
60 that plumes can be well modeled by Gaussian distributions. Our work relies on the assumption that a Gaussian model of the plume cross-section results in more accurate estimates of total flux.

Burton et al. (2023) surveyed emissions of the Tajogaite eruption in early October 2021. Their survey included SO<sub>2</sub> measurements by UAV that were used to infer CO<sub>2</sub> concentrations. Our work in late November complements the Burton et. al. survey by providing additional information on the evolution of the eruption and by using a different CO<sub>2</sub> flux estimation method that  
65 employs direct CO<sub>2</sub> measurements rather than CO<sub>2</sub>/SO<sub>2</sub> ratios. Our estimates of CO<sub>2</sub> flux taken a month later were lower than those of Burton et. al.

## 1.2 Background

La Palma Island is in Spain's Canary archipelago (Schmincke, 1982). The northern sector of the island hosts the oldest subaerial (on land) volcanism, characterized by repeated large lateral edifice collapses (Day et al., 1999; Acocella et al., 2015). Volcanism  
70 resulted in the formation of Garafía and Taburiente and then moved southward to form Cumbre Vieja volcano, at the southern part of the island. This southern system represents the last stage in the geological evolution of La Palma island, as volcanic activity has taken place exclusively on that part of the island for the last 123 ka (Carracedo et al., 1998). The most recent volcanic eruption of Cumbre Vieja is Tajogaite (2021) (Carracedo et al., 2001; Ward and Day, 2001), preceded by that of Teneguía in 1971 (Fernández et al., 2021) and San Juan in 1940 (Fernández et al., 2021; Albert et al., 2016). At 14:10 UTC on  
75 September 19, 2021 Tajogaite volcano erupted from a vent on the western side of La Palma Island, in the vicinity of the Llano del Banco eruptive center of the San Juan eruption of 1949 (Instituto Geográfico Nacional, 2022). The eruption was forecast using seismic, geodetic and geochemical techniques by Spanish researchers who alerted the civil protection officials several

days before the start of the eruption (De Luca et al., 2022). The monitoring network of diffuse CO<sub>2</sub> emissions on La Palma detected magmatic CO<sub>2</sub> several months before the eruption (León et al., 2022; Rodríguez-Pérez et al., 2022). This monitoring activity took advantage of extensive previous work characterizing diffuse CO<sub>2</sub> emissions on La Palma. This work provided key insights into the dynamics of magmatic CO<sub>2</sub> degassing on the island (Padrón et al., 2015). The eruption itself began with an explosive phase that ejected ash to an altitude of 5 km, then transitioned to fire fountains, violent strombolian activity, and the production of highly fluid lava flows. Within 24 hours of the initial eruption a 3 km long lava flow was evident (Instituto Geográfico Nacional, 2022). The eruption lasted for more than 85 days and built a pyroclastic cone of about 225 m in height. Over the period of the eruption, the volcano showed dynamic and changing activity with new vents frequently opening on the active cone. These vents produced explosive and effusive eruptions of varying intensity (Castro and Feisel, 2022). Bulk tephra, matrix glass and glass inclusions have a basanitic-tephritic composition of 43 to 46 wt%.

Since the onset of the 2021 Tajogaite eruption on September 19, frequent measurements of SO<sub>2</sub> emission rates using miniDOAS traverses by car, ship, and helicopter were performed. Using this data a flux of over  $5 \times 10^4$  t day<sup>-1</sup> of SO<sub>2</sub> was estimated (Pérez et al., 2022). Daily monitoring of SO<sub>2</sub> gas emissions occurred before and throughout the eruption using TROPOMI data from the Sentinel 5P satellite (Copernicus SO<sub>2</sub> satellite monitoring, Smithsonian Institution's Global Volcanism Program 2021). The range of measured emissions rates depended upon wind direction and velocity, as well as eruptive style and activity. The measured SO<sub>2</sub> flux ranged from  $3 \times 10^4$  to  $5 \times 10^4$  t day<sup>-1</sup> at the beginning of the eruption and a mean of  $10^4$  t day<sup>-1</sup> over the duration of the active eruption (Albertos et al., 2022). These SO<sub>2</sub> emission rates are likely different from CO<sub>2</sub>, but provide the best available proxy for CO<sub>2</sub> emissions and are a useful point of comparison for our UAS-based flux estimates in addition to the measurements made by Burton et al. 2023 in October 2021 which range from  $3.36 \times 10^4$  to  $4.19 \times 10^4$  t day<sup>-1</sup>.

Additional gas monitoring techniques deployed during the eruption included stationary Multi-GAS and FTIR-based plume gas composition measurements as well as carbon isotope analyses of plume CO<sub>2</sub> in collaboration with the international volcanic gas community (Pérez et al., 2022).

## 2 Methods

Our aim was to measure plume CO<sub>2</sub> concentrations, calculate the resulting flux, and obtain isotope data from samples taken within the plume. To achieve these goals we utilized the Dragonfly UAS, with an approximate battery life of 50 min. This extended flight time enables long-distance transects to capture large plumes. CO<sub>2</sub> concentrations were measured by PP Systems SBA-5 IR sensor mounted on the Dragonfly with data transmitted to the pilot in real-time (Ericksen et al., 2022). Wind speeds were derived from the ERA5 model of the European Centre for Medium-Range Weather Forecasts 10 m height wind speeds corresponding to the time of each flight (Liu et al., 2020). These measurements were independently validated using a hand-held anemometer and the UAS drift method (Liu et al., 2020; Galle et al., 2021). For the drift method, a Dragonfly was programmed to maintain its altitude but not its lateral position and allowed to drift with the plume. We used this estimate of wind velocity within the plume with the highest CO<sub>2</sub> concentration (Plume B) to parameterize the flux estimation (Figure 2).

At the location with the highest measured CO<sub>2</sub> concentration, a timed trigger activated a small pump, and a plume gas sample was collected into a Tedlar bag (Figures 2 and 3). We also collected gas samples of the plume from the ground when the wind direction was favorable and volcanic activity permitted. Ground-based plume samples were analyzed by Infrared Isotope Spectroscopy with a Delta Ray located at the INVOLCAN Volcano Observatory, La Palma, following the procedure  
 115 described previously (Fischer and Lopez, 2016; Ilanko et al., 2019). The error bounds on the δ<sup>13</sup>C measurements are less than 0.1‰ for all analyses.

We also placed a Multi-GAS instrument at an accessible and safe location about 1 km to the north of the crater. Data from this instrument recorded CO<sub>2</sub> and SO<sub>2</sub> concentrations in the gas plume. The ratios were calculated using the Ratiocalc software and we report averages for each day of the experiment.

120 Crosswind transects were flown downwind of the eruption to encounter the plume. CO<sub>2</sub> was measured at 10 hz during flights across the plume at specified altitudes relative to launch. Each measurement was correlated to the latitude, longitude, altitude, and time of the UAS during flight, giving a CO<sub>2</sub> concentration cross-section of the plume.

We set the ambient background CO<sub>2</sub> to the value observed outside the plume for each flight. The actual measurements of ambient CO<sub>2</sub> were made well outside of the plume (up to 400 m away from the edge of the plume) and only vary from 415 to  
 125 430 ppm.

To estimate the total flux of the plume, we perform the following procedure.

1. Convert GPS coordinates into a linear distance from the launch point.
2. Isolate the plume by setting an ambient CO<sub>2</sub> threshold and removing data points less than that threshold.
3. Fit a Gaussian curve to the data set as follows.
  - 130 (a) Calculate the mean,  $\mu$ , and standard deviation,  $\sigma$ , of the CO<sub>2</sub> across the transect.
  - (b) Scale the two-dimensional Gaussian curve to fit the data by choosing a constant amplitude,  $a$ , using gradient descent to minimize the  $\chi^2$  difference between the model and plume sample data. We assume that the Gaussian shape is uniform in both  $x$  and  $y$  dimensions.

$$\begin{aligned}
 \text{GaussianModel2D}() &= a \frac{e^{-\frac{1}{2}\left(\frac{x-\mu_x}{\sigma_x}\right)^2}}{\sigma_x \sqrt{2\pi}} \frac{e^{-\frac{1}{2}\left(\frac{y-\mu_y}{\sigma_y}\right)^2}}{\sigma_y \sqrt{2\pi}} \\
 135 &= a \frac{e^{-\frac{1}{2}\left(\frac{x-\mu}{\sigma}\right)^2}}{\sigma \sqrt{2\pi}} \frac{e^{-\frac{1}{2}\left(\frac{0}{\sigma}\right)^2}}{\sigma \sqrt{2\pi}} && y = 0, \mu_y = 0, \sigma = \sigma_x, \sigma_y = \sigma, \mu = \mu_x \\
 &= a \frac{e^{-\frac{1}{2}\left(\frac{x-\mu}{\sigma}\right)^2}}{\sigma^2 2\pi}
 \end{aligned}$$

4. Integrate the two-dimensional Gaussian and multiply by the measured wind speed,  $v$ , to obtain plume flux in mgS<sup>-1</sup>m<sup>-2</sup>. Multiplying this again by the number of seconds in a day, and the number of mg in a ton gives the flux in  $t \text{ day}^{-1}$ .

$$\begin{aligned}
 \int \text{GaussianModel2D}() &= a \int \frac{e^{-\frac{1}{2}\left(\frac{x-\mu}{\sigma}\right)^2}}{\sigma^2 2\pi} = a \\
 140 \quad \text{flux}(a, v) &= v a
 \end{aligned}$$

### 3 Results

Flux estimates are derived from the 3 UAS transects that crossed plume A. These transects were collected on November 26th and 27th, 2021. Other transects shown in Figure 2 either did not intersect any plume or did not cross the entire plume. In the latter case this resulted in a poor fit to the Gaussian distribution, violating our assumption of normality. We also report carbon isotopes of plume CO<sub>2</sub>, and flux estimates based on the Multi-GAS CO<sub>2</sub>/SO<sub>2</sub> ratios.

**Table 1.** CO<sub>2</sub> data collected by UAS across plumes A and B during the Tajogaite eruption. \* Indicates transect with samples collected into Tedlar bags and analyzed by Infrared Isotope Ratio Spectroscopy. † Indicates transects that encountered plume B, but the gas distribution did not meet our Gaussian fit assumptions, as indicated by the large  $\chi^2$  value in comparison to the Gaussian amplitude.

Date	Transect	Altitude	Wind [m s <sup>-1</sup> ]	Max Con. [ppm]	Gaussian Fit Amplitude	$\chi^2$	Flux [t day <sup>-1</sup> ]
2021-11-26	2 Plume A	200 m	11.8	501	$2.33 \times 10^6$	$2.07 \times 10^4$	$4.59 \pm 0.46 \times 10^3$
2021-11-27	6 Plume A	100 m	12.2	616	$1.40 \times 10^7$	$4.25 \times 10^5$	$2.85 \pm 0.28 \times 10^4$
2021-11-27	7 Plume B†	100 to 250 m	12.2	613	$4.64 \times 10^6$	$1.96 \times 10^6$	$9.44 \pm 0.94 \times 10^3$
2021-11-27	8 Plume A	300 m	12.2	577	$3.18 \times 10^6$	$2.77 \times 10^5$	$6.46 \pm 0.65 \times 10^3$
2021-11-28	9 Plume B†*	300 m	11.3	963	$6.50 \times 10^7$	$1.81 \times 10^7$	$1.22 \pm 0.12 \times 10^5$

#### 3.1 Plume Transect Wind Measurements and CO<sub>2</sub> fluxes

The calculated CO<sub>2</sub> flux for the 5 relevant transects with the corresponding wind speeds are shown in Table 1 for transects across plume A and B. The wind speed measured by UAS drift method was 10.7 ms<sup>-1</sup>. ERA5 modeled wind speeds yielded results ranging from 10.0 to 12.2 ms<sup>-1</sup> with an average of 11.0 ms<sup>-1</sup>.

#### 3.2 Carbon isotopes of plume CO<sub>2</sub>

The CO<sub>2</sub> concentrations and  $\delta^{13}\text{C}$  values of plume gas samples are given in Table 2. Samples collected from the ground at the UNM Multi-GAS site show background CO<sub>2</sub> concentrations 416 to 471 ppm CO<sub>2</sub> with  $\delta^{13}\text{C}$  values of -8‰ (relative to Peedee belemnite) which is close to that of air. The sample collected by UAS has a CO<sub>2</sub> concentration distinctly elevated from air of 671 ppm and a heavier  $\delta^{13}\text{C}$  value of -4.44‰. Samples collected from the ground closer to the vent have even higher CO<sub>2</sub> concentrations from 1030 to 4459 ppm with  $\delta^{13}\text{C}$  values from -2.40 to -1.47‰.

#### 3.3 Multi-GAS measurements of plume

The Multi-GAS CO<sub>2</sub>/SO<sub>2</sub> ratios during the period from November 21 to November 25, 2021 range from 5 to 26 and are shown in Table 2. These values are consistent with those reported by (Albertos et al., 2022) and (Burton et al., 2023). We use the range of reported SO<sub>2</sub> fluxes (mean of 10<sup>4</sup> t day<sup>-1</sup> over the duration of the active eruption (Albertos et al., 2022)) in combination

**Table 2.** Measured CO<sub>2</sub> concentrations and  $\delta^{13}\text{C}$  from ground and UAS.

<b>Date</b>	<b>CO<sub>2</sub> [ppm]</b>	<b><math>\delta^{13}\text{C}</math> VPDB ‰</b>	<b>Collection method/site</b>
2021-11-21	435	-7.46	Ground
2021-11-21	472	-8.34	Ground
2021-11-21	437	-7.65	Ground
2021-11-21	416	-8.00	Ground
2021-11-28	671	-4.44	UAS
2021-11-30	1030	-3.65	Ground
2021-11-30	2998	-2.12	Ground
2021-11-30	2863	-2.15	Ground
2021-12-01	4459	-2.03	Ground
2021-12-01	2722	-1.47	Ground
2021-12-01	1326	-2.40	Ground

**Table 3.** Multi-GAS measurements, SO<sub>2</sub> flux and computed CO<sub>2</sub> flux .

<b>Date</b>	<b>Average CO<sub>2</sub>/SO<sub>2</sub> (molar)</b>	<b>SO<sub>2</sub> flux (t/day)</b>	<b>CO<sub>2</sub> t/day</b>
2021-11-21	26 ± 15	2 ± 1 × 10 <sup>4</sup>	3.6 ± 1.8 × 10 <sup>5</sup>
2021-11-22	10 ± 2	2 ± 1 × 10 <sup>4</sup>	1.4 ± 0.7 × 10 <sup>5</sup>
2021-11-23	5 ± 2	2 ± 1 × 10 <sup>4</sup>	7.3 ± 3.7 × 10 <sup>4</sup>
2021-11-24	7 ± 2	2 ± 1 × 10 <sup>4</sup>	9.5 ± 4.8 × 10 <sup>4</sup>
2021-11-25	16 ± 2	2 ± 1 × 10 <sup>4</sup>	2.3 ± 1.1 × 10 <sup>5</sup>

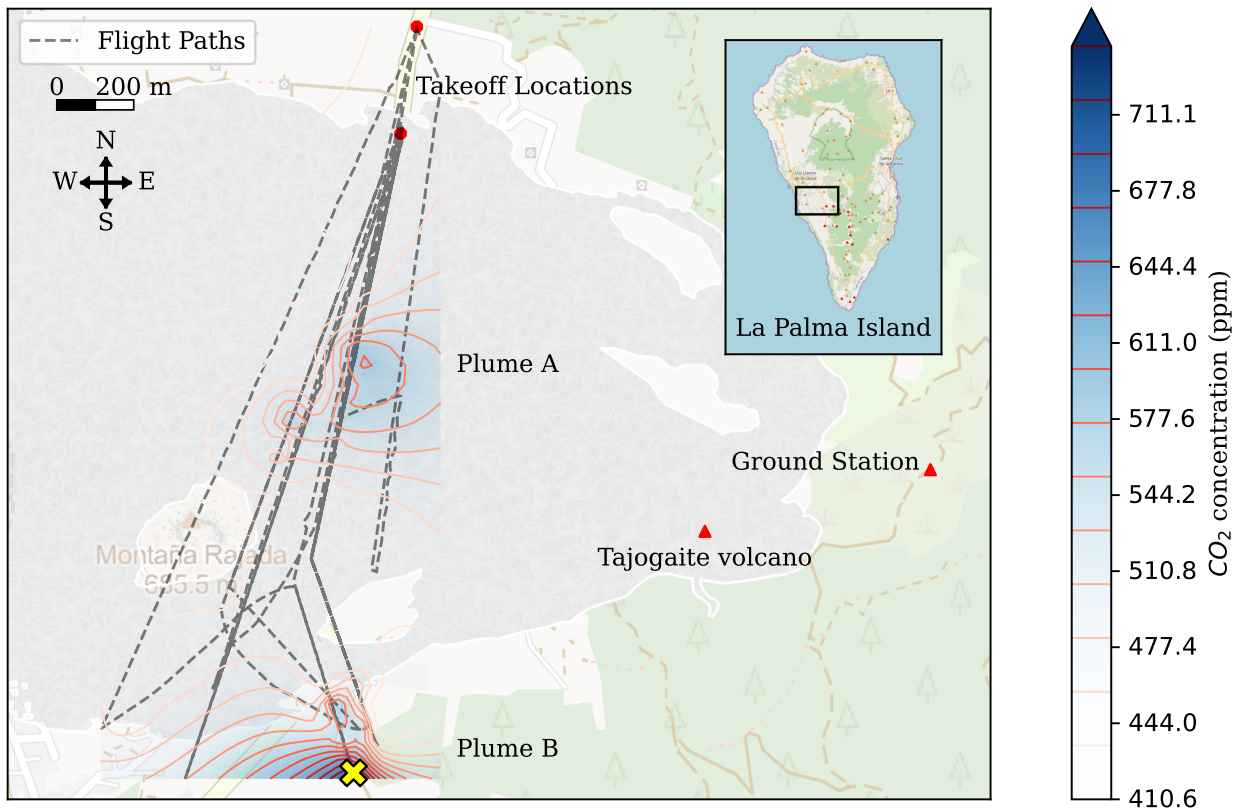
160 with the range of our Multi-GAS CO<sub>2</sub>/SO<sub>2</sub> ratios to obtain CO<sub>2</sub> fluxes ranging from 7.3 × 10<sup>4</sup> to 3.6 × 10<sup>5</sup> t CO<sub>2</sub> day<sup>-1</sup> for this period (Table 3).

## 4 Discussion

This work highlights our efforts collecting and analysing CO<sub>2</sub> gasses during the Tajogaite volcanic eruption. Through this work, we demonstrated the efficacy of using a UAS to study the CO<sub>2</sub> plumes associated with an in-process eruption.

### 165 4.1 CO<sub>2</sub> Emissions

Our UAS-based CO<sub>2</sub> emission estimation technique yields CO<sub>2</sub> fluxes using direct measurement with a single type of instrument. This simplifies the estimation of CO<sub>2</sub> flux. However, in-situ measurement during an active eruption is challenging. The most serious difficulty we encountered was obtaining complete transects across the plume or plumes. In several of our transects, especially for the more distant Plume B, we were not successful in flying the UAS far enough to get to background CO<sub>2</sub> on the

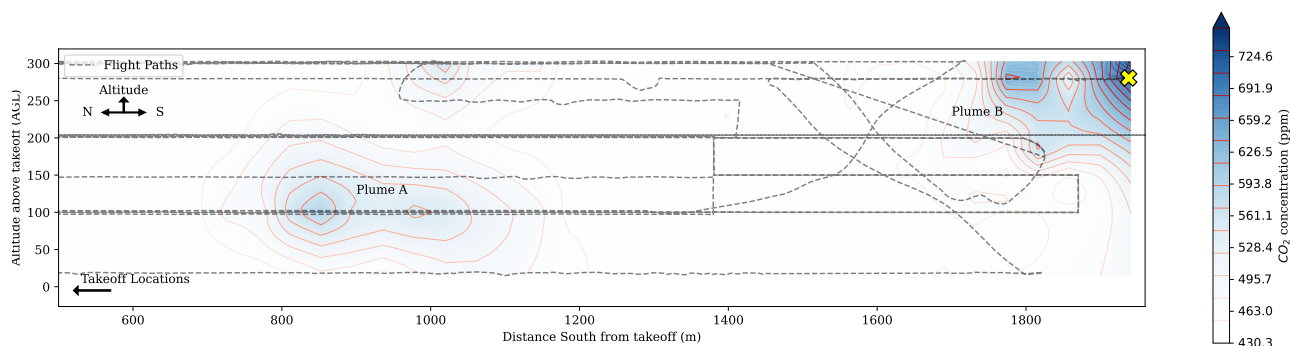


**Figure 2. Top-down perspective map of all transect flight paths.** Flights occurred over a four-day period during the 2021 eruption. This map includes a horizontal cross-section Kriging plot of the CO<sub>2</sub> concentration highlighted as the distinct Plumes A and B. The sample collection location is indicated by the yellow ×. Insert shows the location of Tajogaite Volcano on La Palma Island.

170 far side of the plume. Gas plumes change shape and direction on relatively short-time scales as the wind shifts. While ideally, we would like to perform several flights at various altitudes through a plume in order to obtain a complete CO<sub>2</sub> concentration map of the plume, this is challenging for wide or distant plumes because of limited UAS flight times and the need to know the plume's location and extent a priori. To address this challenge we assume a Gaussian plume and fit a Gaussian curve to our data. We then rotate the Gaussian fit to obtain a 2D concentration slice which is multiplied with estimated wind speed to

175 yield the flux. This approach produces the most accurate results if we transect the plume through its widest part. However, identifying the widest part and then transecting the plume before the plume changes will require teams of collaborating UASs. A good fit of the data by the Gaussian model is given by a low  $\chi^2$  value. For instance, transect 2 was fit with a  $\chi^2$  value of  $2.07 \times 10^4$ , two orders of magnitude lower than the Gaussian fit amplitude of  $2.33 \times 10^6$ . The model fit represented by this low  $\chi^2$  value is depicted in Figure 4.





**Figure 3. Lateral perspective kriging map of all transects plotted in Figure 2.** The plot indicates two separate plumes in the vertical cross-section labeled Plume A and Plume B. The sample collection location is indicated by the yellow ×.

180     Uncertainty is introduced by the assumptions made by the model. With just one horizontal transect, we assume the vertical Gaussian standard deviation is identical to the horizontal standard deviation of the plume. Both dimension standard deviations are linearly correlated to the flux calculation, meaning that a 50% error in the vertical standard deviation will affect the flux estimate by a factor of 50%. Our estimate is that the vertical standard deviation is likely close to the horizontal standard deviation, but the difference is impossible to determine. Additionally, we assume that the horizontal transect samples the

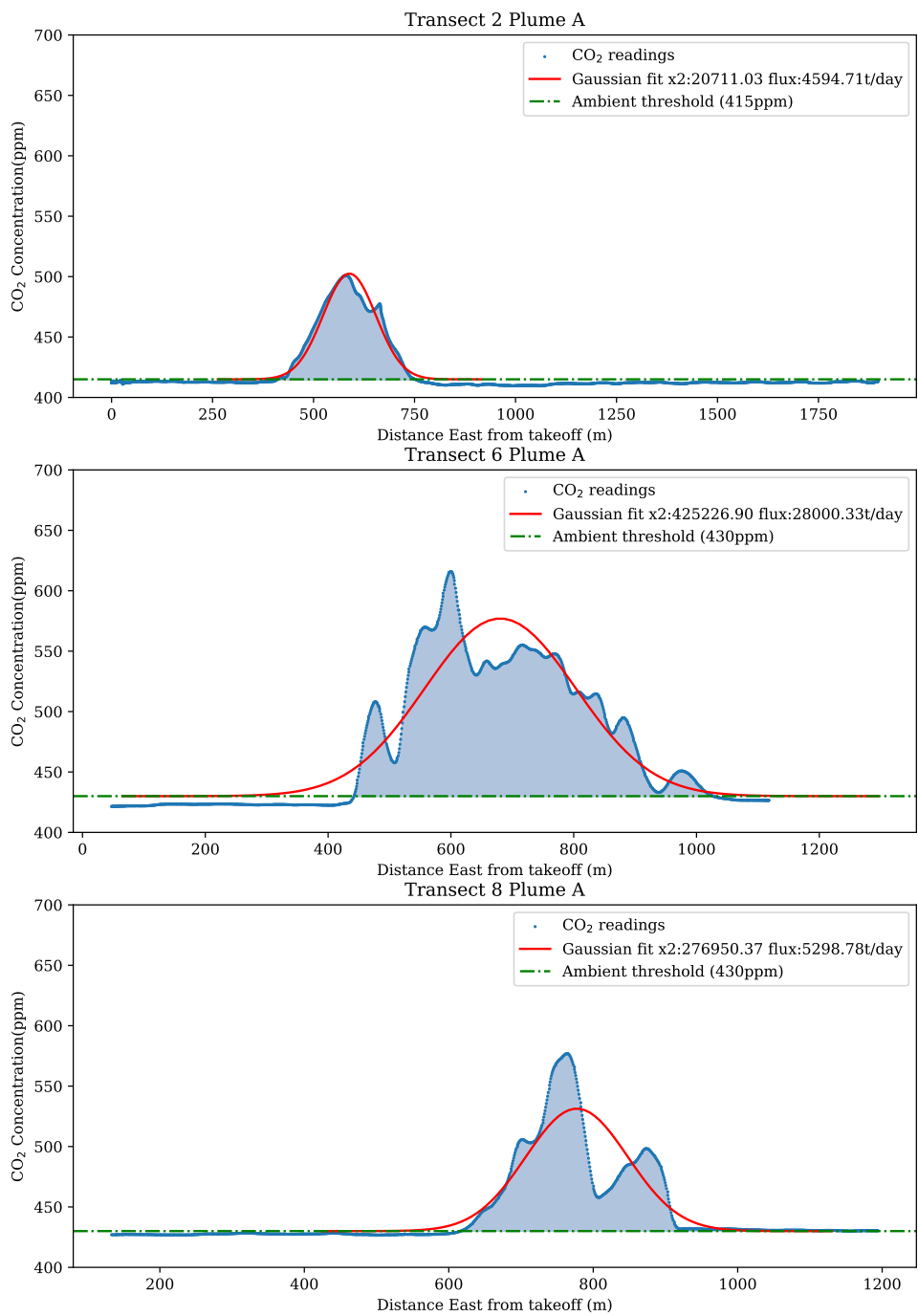
185     plume at the altitude where the plume is widest. If the transect is not through the largest cross-section, the flux calculation may be a lower bound. Wind velocity was measured during one of the transects, but weather is notoriously unpredictable. This represents another source of uncertainty in the model which has a linear effect on the flux measurement. We use our wind estimates during the time of each flux calculation. This wind speed variation gives an error range of  $\pm 10\%$ . Additional sources of uncertainty such as sensor or location error are negligible in comparison to the aforementioned uncertainty. Therefore our

190     estimated error range is  $\pm 10\%$ .

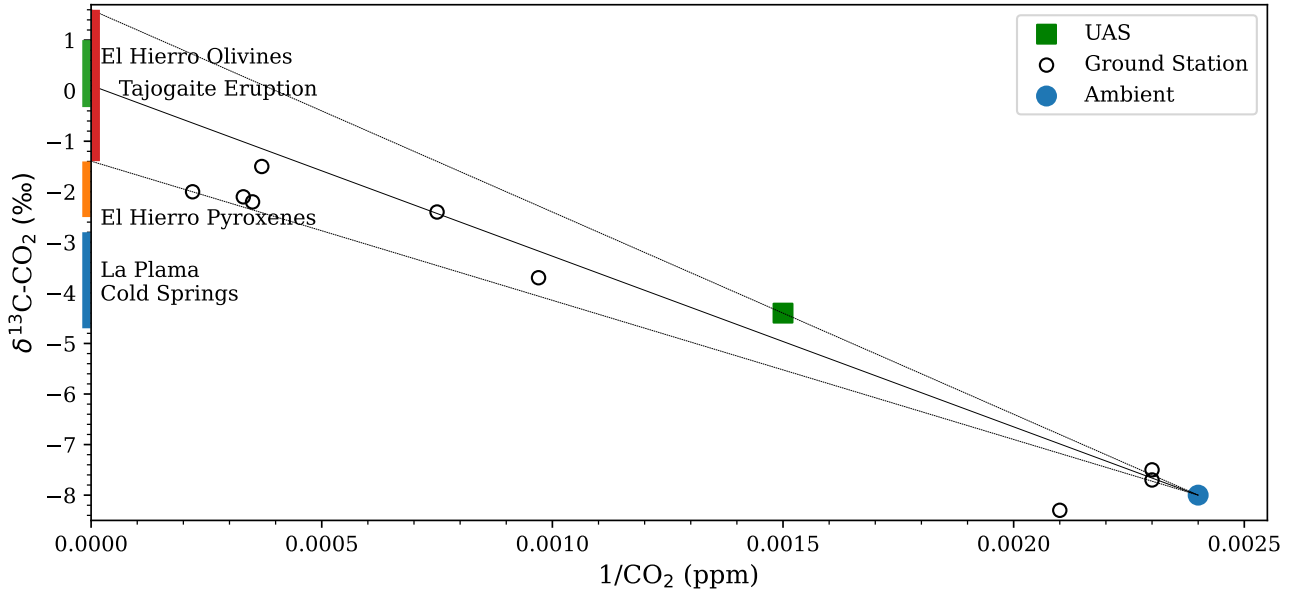
Our data show that for Plume A, transect 6 (Figure 3) represents the widest plume and results in the highest  $\text{CO}_2$  flux value of  $2.85 \times 10^4 \text{ t day}^{-1}$ , an order of magnitude higher than the other two Plume A transects. This transect was flown at the lowest altitude (100 m) of the three, implying that the other two transects only captured the upper parts of the plume. Comparison with  $\text{CO}_2$  fluxes obtained by combining  $\text{SO}_2$  fluxes with  $\text{CO}_2$  to  $\text{SO}_2$  ratios measured 1 km from the vent gives fluxes ranging from

195      $7.3 \times 10^4$  to  $3.6 \times 10^5 \text{ t CO}_2 \text{ day}^{-1}$  (Table 3). Therefore our highest flux measurement is consistent with the lowest estimate using the combined method. While comparing these two approaches is helpful, our experiment was not designed to make a direct comparison. The discrepancy could be due to a significantly varying  $\text{CO}_2$  emission rate during eruptions, an overestimate of the  $\text{SO}_2$  flux, or the lack of validity of the 2D Gaussian extrapolation approach. Our estimates are consistent with the October 2021 high emissions presented by Bruton et al., 2023 who report fluxes of  $3.36 \times 10^4$  to  $4.19 \times 10^4 \text{ t CO}_2 \text{ day}^{-1}$  (389 to 486

200     kg/s) for the smaller, non-ashy plume that we measured. More work needs to be performed in the future to better assess sources



**Figure 4.** Three plots of encounters with plume A with the closest Gaussian model fit. CO<sub>2</sub> concentration (blue) over the encountered plume as a function of distance from takeoff location.



**Figure 5. Keeling plot showing standard air, samples collected on the ground, and with the UAS.** Linear extrapolation indicates a volcanic  $\delta^{13}\text{C} - \text{CO}_2$  value of  $-1.40$  to  $1.60$  ‰. Also shown are data from olivines and pyroxenes collected at the El Hierro Volcano (Sandoval-Velasquez et al., 2021) and the composition of cold  $\text{CO}_2$ -rich gas discharges on La Palma Island (Padrón et al., 2015).

of discrepancies with new and coordinated measurements at passively degassing and erupting volcanoes. However, even with such discrepancies, it is clear that the Tajogaite eruption in November 2021 produced a  $\text{CO}_2$  flux up to  $2 \times 10^4 \text{ t day}^{-1}$  or even  $5 \times 10^5 \text{ t day}^{-1}$ . Even the  $5 \times 10^5 \text{ t day}^{-1}$  would be only 0.4% of the daily  $\text{CO}_2$  emitted by the burning of fossil fuels (Conlen, 2021).

## 205 4.2 Carbon Isotopes

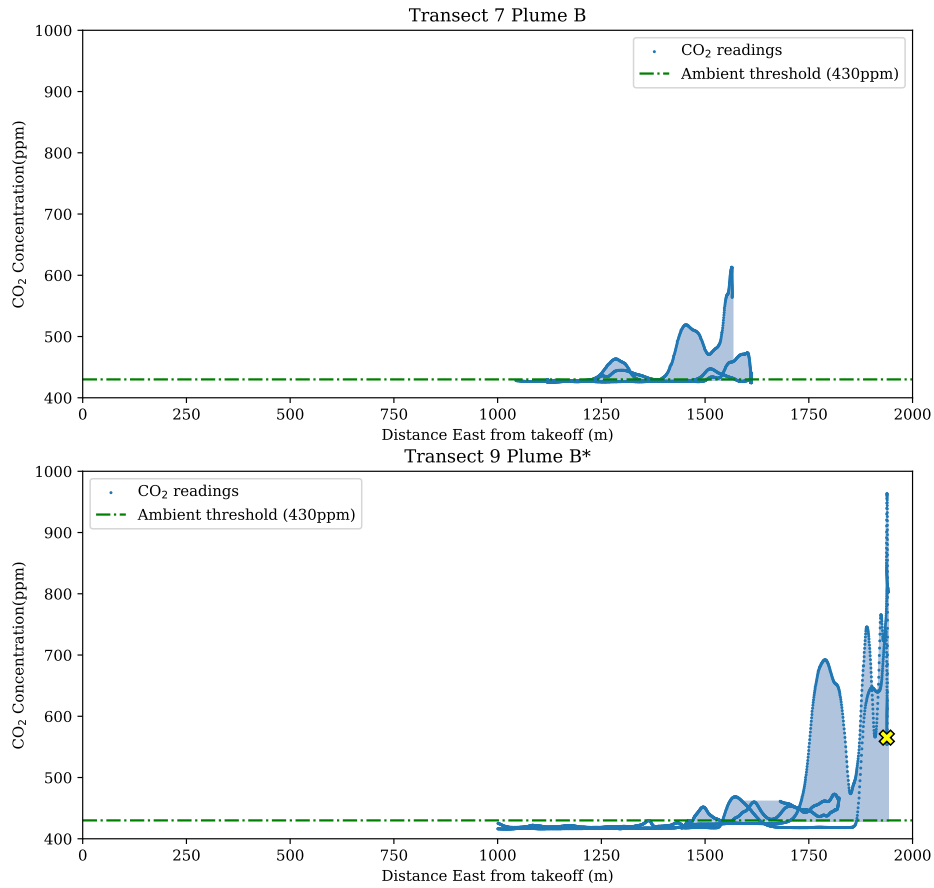
The carbon isotope data obtained from the UAS-captured samples and the samples collected from the ground are generally consistent and show mixing of air-derived  $\text{CO}_2$  with a deep magmatic source. Figure 5 shows that all plume samples collected from the ground define a set of mixing lines in  $\delta^{13}\text{C}$  versus  $\text{CO}_2^{-1}$  space, i.e. in a Keeling plot (Keeling, 1958) that allows for the extrapolation of the  $\delta^{13}\text{C}$  value of the pure  $\text{CO}_2$  being emitted from the volcanic vent. The sample collected by UAV  
 210 lies slightly above this set of mixing lines and extrapolates to somewhat heavier  $\delta^{13}\text{C}$ . The resulting volcanic  $\delta^{13}\text{C}$  values taking into account all samples lies between  $-1.5$  and  $+1.5$  ‰. Despite these uncertainties, these values overlap with  $\delta^{13}\text{C}$  data obtained from mantle xenoliths erupted at the nearby El Hierro Volcano (Sandoval-Velasquez et al., 2021). Extrapolation of all these data results in a  $\delta^{13}\text{C}$  value of  $0.1 \pm 1.5$  ‰. Notably the carbon isotope values are significantly heavier than those measured in cold  $\text{CO}_2$ -rich gas discharges from springs on La Palma (Padrón et al., 2015) and within the range of values measured in

215 olivines and pyroxenes of xenoliths from El Hierro Island (Sandoval-Velasquez et al., 2021). These authors suggested that the heavy values of the xenoliths are related to recycling of crustal carbon, likely derived from carbonates into the mantle source of the Canary Islands hot spot. Our data suggests that the magmatic system that is driving the Tajogaite eruption taps into this deep CO<sub>2</sub>, rather than remobilizing CO<sub>2</sub> that feeds the cold degassing springs on the island. Sandoval-Velasquez et al. (2024) report  $\delta^{13}\text{C}$  values measured in olivines, clinopyroxenes and orthopyroxenes from lava flows erupted in 2021. Their data is  
220 consistent with our extrapolated heavy  $\delta^{13}\text{C}$  values. For olivines, representing the earliest crystallization phase, their values range from 0 to 1‰. Values are somewhat lighter for orthopyroxenes and clinopyroxenes. Using all data, their estimated mantle endmember is -1.5‰. Our data extrapolate to -1.4 to +1.6‰. Given the difference in sample medium, i.e. phenocrysts versus gas plume, the results are remarkably consistent. More work at erupting volcanoes is needed to better constrain the sources of magmatic CO<sub>2</sub> emitted during heightened activity of volcanic systems.

## 225 5 Conclusion

The use of UAS is revolutionizing volcano science by enabling the collection of data that previously required extensive, costly, and hazardous aerial surveys using piloted fixed-wing aircraft or helicopters. Especially in the field of volcanic gases, recent UAS-based campaigns showed the value of utilizing UAS to make gas flux and gas composition measurements and also collect plume samples for subsequent chemical and isotopic analyses (Liu et al., 2020; Galle et al., 2021). Our work during the  
230 explosive and hazardous eruption of the Tajogaite Volcano shows that CO<sub>2</sub> emission measurements and plume gas samples can be collected even during these heightened periods of volcanic activity. We demonstrate that a UAS capable of automated sampling can be guided by the expert knowledge of scientists in the field to collect valuable data that would be impossible with robots or scientists alone. The collected data provide key insights into the volcano's state and the course of an eruption. Future work is needed to increase UAS autonomy in choosing flight paths to more completely capture data from dynamic plumes, but,  
235 as we have demonstrated, the present approach works for volcano monitoring during eruptions and can provide much-needed information about eruptive gas emissions.

*Code and data availability.* Additional data and plot generation code is available at [https://github.com/BCLab-UNM/lapalma-expedition/tree/2021\\_tajogaite\\_eruption](https://github.com/BCLab-UNM/lapalma-expedition/tree/2021_tajogaite_eruption). UAS code available at <https://github.com/BCLab-UNM/dragonfly-dashboard> <https://github.com/BCLab-UNM/dragonfly-controller>.



**Figure A1.** Encounters with plume B were not as well-fit as plume A encounters. These plots show the CO<sub>2</sub> readings collected during the two highest plume model fit. As with Figure 4, CO<sub>2</sub> concentration (blue) over the encountered plume as a function of distance from takeoff location. The sample collection location is indicated by the yellow ×.

240 *Author contributions.* Author contributions: JE, GMF, SN, and TF (UNM VolCAN team) performed UAS fieldwork for this paper. JE, NP, PHP, EPG (INVOLCAN team) and TF conducted the ground fieldwork. JE developed UAS software and hardware supervised by GMF and MEM. SN designed the sample collection device. JE, NP, PHP, EPG performed data analysis. TF performed isotope and gas analysis. JE, TF, GMF, SN, and MEM wrote the manuscript.

*Competing interests.* The authors declare that they have no competing interests. The authors give consent for publication. All data needed to  
245 evaluate the conclusions in the paper are present in the paper and/or the Supplementary Materials.

*Acknowledgements.* JE support provided by the Department of Energy's Kansas City National Security Campus, operated by Honeywell Federal Manufacturing & Technologies, LLC under contract number DE-NA0002839. GMF, SN, TF, RF, and MM support provided by the VolCAN project under National Science Foundation grant 2024520. Support was also provided by a Google CSR award. This study received funding from Google and Honeywell Federal Manufacturing & Technologies, LLC. VOLRISKMAC II (MAC2/3.5b/328) financed by the  
250 Program INTERREG V A Spain-Portugal MAC 2014-2020 of the European Commission. Thanks to Samantha Wolf for help calculating the flux.

## References

- Acocella, V., Di Lorenzo, R., Newhall, C., and Scandone, R.: An overview of recent (1988 to 2014) caldera unrest: Knowledge and perspectives, <https://doi.org/10.1002/2015RG000492>, 2015.
- 255 Albert, H., Costa, F., and Martí, J.: Years to weeks of seismic unrest and magmatic intrusions precede monogenetic eruptions, *Geology*, 44, <https://doi.org/10.1130/G37239.1>, 2016.
- Albertos, V. T., Recio, G., Alonso, M., Amonte, C., Rodríguez, F., Rodríguez, C., Pitti, L., Leal, V., Cervigón, G., González, J., Przeor, M., Santana-León, J. M., Barrancos, J., Hernández, P. A., Padilla, G. D., Melián, G. V., Padrón, E., Asensio-Ramos, M., and Pérez, N. M.: Sulphur dioxide (SO<sub>2</sub>) emissions by means of miniDOAS measurements during the 2021 eruption of Cumbre Vieja volcano, La Palma, Canary Islands, EGU22, <https://doi.org/10.5194/EGUSPHERE-EGU22-5603>, 2022.
- 260 Arrhenius, S.: On the Influence of Carbonic Acid in the Air upon the Temperature of the Ground, *Philos. Mag*, 41, 237, 1896.
- Burton, M., Aiuppa, A., Allard, P., Asensio-Ramos, M., Cofrades, A. P., La Spina, A., Nicholson, E. J., Zanon, V., Barrancos, J., Bitetto, M., Hartley, M., Romero, J. E., Waters, E., Stewart, A., Hernández, P. A., Lages, J. P., Padrón, E., Wood, K., Esse, B., Hayer, C., Cyrzan, K., Rose-Koga, E. F., Schiavi, F., D'Auria, L., and Pérez, N. M.: Exceptional eruptive CO<sub>2</sub> emissions from intra-plate alkaline magmatism in the Canary volcanic archipelago, *Communications Earth & Environment* 2023 4:1, 4, 1–10, <https://doi.org/10.1038/s43247-023-01103-x>, 2023.
- 265 Burton, M. R., Sawyer, G. M., and Granieri, D.: Deep Carbon Emissions from Volcanoes, *Reviews in Mineralogy and Geochemistry*, 75, 323–354, <https://doi.org/10.2138/RMG.2013.75.11>, 2013.
- Carracedo, J. C., Day, S., Guillou, H., Rodríguez Badiola, E., Canas, J. A., and Pérez Torrado, F. J.: Hotspot volcanism close to a passive continental margin: the Canary Islands, *Geological Magazine*, 135, 591–604, <https://doi.org/10.1017/S0016756898001447>, 1998.
- 270 Carracedo, J. C., Badiola, E. R., Guillou, H., De La Nuez, J., and Pérez Torrado, F. J.: Geology and volcanology of la Palma and el Hierro, western Canaries, *Estudios Geológicos*, 57, 2001.
- Castro, J. M. and Feisel, Y.: Eruption of ultralow-viscosity basanite magma at Cumbre Vieja, La Palma, Canary Islands, *Nature Communications* 2022 13:1, 13, 1–12, <https://doi.org/10.1038/s41467-022-30905-4>, 2022.
- 275 Conlen, M.: How Much Carbon Dioxide Are We Emitting? – Climate Change: Vital Signs of the Planet, <https://climate.nasa.gov/news/3020/how-much-carbon-dioxide-are-we-emitting/>, 2021.
- Day, S. J., Carracedo, J. C., Guillou, H., and Gravestock, P.: Recent structural evolution of the Cumbre Vieja volcano, La Palma, Canary Islands: Volcanic rift zone reconfiguration as a precursor to volcano flank instability?, *Journal of Volcanology and Geothermal Research*, 94, [https://doi.org/10.1016/S0377-0273\(99\)00101-8](https://doi.org/10.1016/S0377-0273(99)00101-8), 1999.
- 280 De Luca, C., Valerio, E., Giudicepietro, F., Macedonio, G., Casu, F., and Lanari, R.: Pre-and Co-Eruptive Analysis of the September 2021 Eruption at Cumbre Vieja Volcano (La Palma, Canary Islands) Through DInSAR Measurements and Analytical Modeling, *Geophysical Research Letters*, 49, e2021GL097293, 2022.
- Ericksen, J., Fricke, G. M., Nowicki, S., Fischer, T. P., Hayes, J. C., Rosenberger, K., Wolf, S. R., Fierro, R., and Moses, M. E.: Aerial Survey Robotics in Extreme Environments: Mapping Volcanic CO<sub>2</sub> Emissions With Flocking UAVs, *Frontiers in Control Engineering*, 0, <https://doi.org/10.3389/FCTEG.2022.836720>, 2022.
- 285 Fernández, J., Escayo, J., Hu, Z., Camacho, A. G., Samsonov, S. V., Prieto, J. F., Tiampo, K. F., Palano, M., Mallorquí, J. J., and Ancochea, E.: Detection of volcanic unrest onset in La Palma, Canary Islands, evolution and implications, *Scientific Reports*, 11, <https://doi.org/10.1038/s41598-021-82292-3>, 2021.

- Fischer, T. P. and Aiuppa, A.: AGU Centennial Grand Challenge: Volcanoes and Deep Carbon Global CO<sub>2</sub> Emissions From Subaerial Volcanism—Recent Progress and Future Challenges, *Geochemistry, Geophysics, Geosystems*, 21, <https://doi.org/10.1029/2019GC008690>, 2020.
- Fischer, T. P. and Lopez, T. M.: First airborne samples of a volcanic plume for  $\delta^{13}\text{C}$  of CO<sub>2</sub> determinations, *Geophysical Research Letters*, 43, 3272–3279, <https://doi.org/10.1002/2016GL068499>, 2016.
- Fischer, T. P., Arellano, S., Carn, S., Aiuppa, A., Galle, B., Allard, P., Lopez, T., Shinohara, H., Kelly, P., Werner, C., Cardellini, C., and Chiodini, G.: The emissions of CO<sub>2</sub> and other volatiles from the world’s subaerial volcanoes, *Scientific Reports*, 9, <https://doi.org/10.1038/s41598-019-54682-1>, 2019.
- Galle, B., Arellano, S., Bobrowski, N., Conde, V., Fischer, T. P., Gerdes, G., Gutmann, A., Hoffmann, T., Itikarai, I., Krejci, T., Liu, E. J., Mulina, K., Nowicki, S., Richardson, T., Rüdiger, J., Wood, K., and Xu, J.: A multi-purpose, multi-rotor drone system for long-range and high-altitude volcanic gas plume measurements, *Atmospheric Measurement Techniques*, 14, <https://doi.org/10.5194/amt-14-4255-2021>, 2021.
- Gerlach, T. M., Delgado, H., McGee, K. A., Doukas, M. P., Venegas, J. J., and Cárdenas, L.: Application of the LI-COR CO<sub>2</sub> analyzer to volcanic plumes: A case study, volcán Popocatépetl, Mexico, June 7 and 10, 1995, *Journal of Geophysical Research: Solid Earth*, 102, 8005–8019, <https://doi.org/10.1029/96JB03887>, 1997.
- Giggenbach, W. F.: Chemical Composition of Volcanic Gases, *Monitoring and Mitigation of Volcano Hazards*, pp. 221–256, [https://link.springer.com/chapter/10.1007/978-3-642-80087-0\\_7](https://link.springer.com/chapter/10.1007/978-3-642-80087-0_7), 1996.
- Illanko, T., Fischer, T. P., Kyle, P., Curtis, A., Lee, H., and Sano, Y.: Modification of fumarolic gases by the ice-covered edifice of Erebus volcano, Antarctica, *Journal of Volcanology and Geothermal Research*, 381, 119–139, <https://doi.org/10.1016/J.JVOLGEORES.2019.05.017>, 2019.
- Instituto Geográfico Nacional: Noticias e informe mensual de vigilancia volcánica, [https://www.ign.es/web/resources/volcanologia/html/CA\\_noticias.html](https://www.ign.es/web/resources/volcanologia/html/CA_noticias.html), 2022.
- Johnson, M. S., Schwandner, F. M., Potter, C. S., Nguyen, H. M., Bell, E., Nelson, R. R., Philip, S., and O’Dell, C. W.: Carbon Dioxide Emissions During the 2018 Kilauea Volcano Eruption Estimated Using OCO-2 Satellite Retrievals, *Geophysical Research Letters*, 47, e2020GL090507, <https://doi.org/10.1029/2020GL090507>, 2020.
- Keeling, C. D.: The concentration and isotopic abundances of atmospheric carbon dioxide in rural areas, *Geochimica et Cosmochimica Acta*, 13, [https://doi.org/10.1016/0016-7037\(58\)90033-4](https://doi.org/10.1016/0016-7037(58)90033-4), 1958.
- León, J. M. S. d., Melián, G. V., Rodríguez, C., Cervigón-Tomico, G., Ortega, V., Dorth, D. M. v., Cabrera-Pérez, I., Cordero, M., Przeor, M., Silva, R. F. F., Matos, S. B. d., Baldoni, E., Ramalho, M. M. P., Viveiros, F., Calvo, D., and Pérez, N. M.: Long-term variations of diffuse CO<sub>2</sub> at Cumbre Vieja volcano, La Palma, Canary Islands, *EGU22*, <https://doi.org/10.5194/EGUSPHERE-EGU22-8773>, 2022.
- Liu, E. J., Aiuppa, A., Alan, A., Arellano, S., Bitetto, M., Bobrowski, N., Carn, S., Clarke, R., Corrales, E., De Moor, J. M., Diaz, J. A., Edmonds, M., Fischer, T. P., Freer, J., Fricke, G. M., Galle, B., Gerdes, G., Giudice, G., Gutmann, A., Hayer, C., Itikarai, I., Jones, J., Mason, E., McCormick Kilbride, B. T., Mulina, K., Nowicki, S., Rahilly, K., Richardson, T., Rüdiger, J., Schipper, C. I., Watson, I. M., and Wood, K.: Aerial strategies advance volcanic gas measurements at inaccessible, strongly degassing volcanoes, *Science Advances*, 6, <https://doi.org/10.1126/sciadv.abb9103>, 2020.
- Office of Science, US DOE: FLUXNET, <http://fluxnet.org>, 2023.



- 325 Padrón, E., Pérez, N. M., Rodríguez, F., Melián, G., Hernández, P. A., Sumino, H., Padilla, G., Barrancos, J., Dionis, S., Notsu, K., and Calvo, D.: Dynamics of diffuse carbon dioxide emissions from Cumbre Vieja volcano, La Palma, Canary Islands, *Bulletin of Volcanology*, 77, <https://doi.org/10.1007/s00445-015-0914-2>, 2015.
- Pérez, N. M., Hernández, P. A., Melián, G. V., Padrón, E., Asensio-Ramos, M., Barrancos, J., Padilla, G. D., Rodríguez, F., D'Auria, L., Amonte, C., Alonso, M., Martín-Lorenzo, A., Calvo, D., Rodríguez, C., Hernández, W., Coldwell, B., and Pankhurst, M. J.: The 2021 Cumbre Vieja eruption: an overview of the geochemical monitoring program, *EGU22*, <https://doi.org/10.5194/EGUSPHERE-EGU22-12491>, 2022.
- 330 Rodríguez-Pérez, C., Barrancos, J., Hernández, P. A., Pérez, N. M., Padrón, E., Melián, G. V., Rodríguez, F., Asensio-Ramos, M., and Padilla, G. D.: Continuous monitoring of diffuse CO<sub>2</sub> emission from Cumbre Vieja volcano: early evidences of magmatic CO<sub>2</sub> surface arrival, *Tech. rep.*, Copernicus Meetings, 2022.
- 335 Rüdiger, J., Tirpitz, J. L., Maarten De Moor, J., Bobrowski, N., Gutmann, A., Liuzzo, M., Ibarra, M., and Hoffmann, T.: Implementation of electrochemical, optical and denuder-based sensors and sampling techniques on UAV for volcanic gas measurements: Examples from Masaya, Turrialba and Stromboli volcanoes, *Atmospheric Measurement Techniques*, 11, <https://doi.org/10.5194/amt-11-2441-2018>, 2018.
- Sandoval-Velasquez, A., Rizzo, A. L., Aiuppa, A., Remigi, S., Padrón, E., Pérez, N. M., and Frezzotti, M. L.: Recycled crustal carbon in the depleted mantle source of El Hierro volcano, Canary Islands, *Lithos*, 400-401, <https://doi.org/10.1016/j.lithos.2021.106414>, 2021.
- 340 Sandoval-Velasquez, A., Casetta, F., Ntaflou, T., Aiuppa, A., Coltorti, M., Frezzotti, M. L., Alonso, M., Padrón, E., Pankhurst, M., Pérez, N. M., and Rizzo, A. L.: 2021 Tajogaite eruption records infiltration of crustal fluids within the upper mantle beneath La Palma, Canary Islands, *Frontiers in Earth Science*, 12, 1303 872, <https://doi.org/10.3389/FEART.2024.1303872/BIBTEX>, 2024.
- Schmincke, H. U.: Volcanic and chemical evolution of the Canary Islands, *Geology of the northwest African continental margin*, pp. 273–306, [https://doi.org/10.1007/978-3-642-68409-8\\_12/COVER](https://doi.org/10.1007/978-3-642-68409-8_12/COVER), 1982.
- 345 Schwandner, F. M., Gunson, M. R., Miller, C. E., Carn, S. A., Eldering, A., Krings, T., Verhulst, K. R., Schimel, D. S., Nguyen, H. M., Crisp, D., O'Dell, C. W., Osterman, G. B., Iraci, L. T., and Podolske, J. R.: Spaceborne detection of localized carbon dioxide sources, *Science*, 358, <https://doi.org/10.1126/science.aam5782>, 2017.
- Stix, J., de Moor, J. M., Rüdiger, J., Alan, A., Corrales, E., D'Arcy, F., Diaz, J. A., and Liotta, M.: Using Drones and Miniaturized Instrumentation to Study Degassing at Turrialba and Masaya Volcanoes, Central America, *Journal of Geophysical Research: Solid Earth*, 123, 6501–6520, <https://doi.org/10.1029/2018JB015655>, 2018.
- 350 Ward, S. N. and Day, S.: Cumbre Vieja Volcano-Potential collapse and tsunami at La Palma, Canary Islands, *Geophysical Research Letters*, 28, <https://doi.org/10.1029/2001GL013110>, 2001.
- Werner, C., Kelly, P. J., Doukas, M., Lopez, T., Pfeffer, M., McGimsey, R., and Neal, C.: Degassing of CO<sub>2</sub>, SO<sub>2</sub>, and H<sub>2</sub>S associated with the 2009 eruption of Redoubt Volcano, Alaska, *Journal of Volcanology and Geothermal Research*, 259, 270–284, <https://doi.org/10.1016/J.JVOLGEORES.2012.04.012>, 2013.
- 355 Xi, X., Johnson, M. S., Jeong, S., Fladeland, M., Pieri, D., Diaz, J. A., and Bland, G. L.: Constraining the sulfur dioxide degassing flux from Turrialba volcano, Costa Rica using unmanned aerial system measurements, *Journal of Volcanology and Geothermal Research*, 325, 110–118, <https://doi.org/10.1016/J.JVOLGEORES.2016.06.023>, 2016.