

Controlled release testing of the static chamber methodology for direct measurements of methane emissions

James P. Williams¹, Khalil El Hachem¹, and Mary Kang¹

¹Department of Civil Engineering, McGill University, Montréal, Québec, Canada

Correspondence: James P. Williams (philip.williams@mail.mcgill.ca)

Abstract. Direct measurements of methane emissions at the component level provide the level of detail necessary for developing actionable mitigation strategies. As such, there is a need to understand the magnitude of component level methane emission sources and test methane quantification methods that can capture methane emissions ~~from component level sources at the component level used in national inventories~~. The static chamber method is a direct measurement technique that is being applied to measure large and complex methane sources such as oil and gas infrastructure. In this work we compile ~~component level~~ methane emission factors from the IPCC emission factor database to understand the magnitude of component level methane flowrates, review the tested flowrates and measurement techniques from ~~3840~~ controlled release experiments, and perform 64 controlled release testing of ~~the~~ static chambers methodology with mass flowrates of 1.02, 10.2, 102, and 512 grams of methane per hour (g/hour). We vary the leak properties, chamber shape, chamber size, and usage of fans to evaluate how these factors affect the accuracy of the static chamber method. We find that 99% of component level methane emission rates from the IPCC emission factor database are below 100 g/hour, and that 77% of previously-available controlled release experiments did not test for methane mass flowrates below 100 g/hour. We find that the static chamber method quantified methane flowrates with an overall accuracy of $\pm 14/-14\%$, and that optimal chamber configurations (i.e., chamber shape, volume, usage of fans) can improve accuracy to below $\pm 5\%$. We find that smaller chambers (≤ 20 L) performed better than larger volume chambers (≥ 20 L), regardless of the shape of chamber or usage of fans. However, we found that the usage of fans can substantially increase the accuracy of larger chambers, especially at higher mass flowrates of methane (≥ 100 g/hour). Overall, our findings can be used to engineer static chamber systems for future direct measurement campaigns targeting a wide range of sources, including landfills, manholes, and oil and natural gas infrastructure.

1 Introduction

Methane is a potent greenhouse gas, and international initiatives such as the Global Methane Pledge ([Global Methane Pledge, 2021.](#)) have motivated national commitments towards reducing emissions of methane from a variety of sectors from waste to energy to agriculture. In order to materialize methane reductions through actionable mitigation strategies, accurate methane inventories that quantify methane from different sectors and sources are needed. Methane emission sources can be broadly classified as either site or component level emissions, where site level emissions are the sum of multiple emitting components. There are also additional classifications such as facility, regional, continental, and global level (NACEM., 2018) which encompass each pre-

ceding classification within a larger agglomeration of methane emission sources. Understanding methane emissions at the component level (i.e., the smallest tier of methane emissions sources) is particularly important for developing actionable methane reduction strategies as these data can be used to directly analyze the cost-benefits of mitigation options which allows policy makers and project developers to make informed decisions ~~-For example, a carbon crediting system requires that the quantity of methane being emitted from a specific source is known (Kang et al., 2019; IEA, 2021). Overall (Kang et al., 2019; IEA, 2021)~~. Therefore, it is important that we test and develop methane quantification methods that are capable of measuring methane emissions accurately at the component level.

To select the optimal methane measurement methods, there is a need to understand the expected magnitude of methane emission rates from different component level sources. Some data sources such as the IPCC emission factor database (IPCC-EFDB, 2022) have compiled emission factors for different greenhouse gas sources around the world. However, some emission factors within this database are provided at the site level, and some are provided in alternative forms to methane emission rates (e.g., mass of methane emitted per ton of waste) which makes it difficult to determine the magnitude of expected component level emission rates. As such, our goal is to determine the approximate magnitude of methane emission rates at the component level so that we can conduct tests at appropriate methane ~~flowrate ranges~~flowrates.

There are multiple methods that are used to quantify methane emissions, which we classify here as either indirect or direct methods. Indirect methane quantification methods are based on measurements made away from the source of emissions and can often be conducted without site access. These methods include mobile surveying, stationary tower (e.g., eddy covariance tower) measurements, aerial based surveys, and satellite measurements (Cusworth et al., 2022; Edie et al., 2020; Robertson et al., 2017; Kumar et al., 2022; Riddick et al., 2022; Ravikumar et al., 2017; Ayasse et al., 2019; Cooper et al., 2021; Varon et al., 2018; de Foy et al., 2023). Direct methane quantification methods are based on quantifying methane emissions directly at the source of emissions and generally require site access. The most common direct measurement methods include optical gas imaging cameras, Hi-Flow samplers, and chamber based methodologies. ~~Indirect measurements can be used to measure a large number of sources quickly and efficiently, but have higher limits of detection when compared to direct methods and additional challenges related to source attribution at the component level.~~

Methane sources can be classified as component, site, facility, regional, and global level sources in order of increasing spatial scales (NACEM., 2018). As an example, a valve on an oil and gas well would constitute a component level source whereas all oil and gas wells in the Appalachian basin would comprise a regional methane source. The advantages of methane inventories created from component level measurements are high resolution and easy comparisons to regional inventories, which are predominantly made using component level data (EPA, 2021; ECCC, 2021), where specific discrepancies can be identified (Rutherford et al., 2021). Indirect measurements can be used to measure methane emissions at site/facility/regional levels. On the other hand, direct measurement methods are labour intensive and ~~typically limited to measuring emissions at a smaller scale~~can omit methane sources when scaling up measurements to facility/regional/global levels, but can quantify and attribute methane emissions at the component level. In terms of testing methane measurement methods for accuracy, the majority of published literature has focused on indirect methods (e.g., ~~(Robertson et al., 2017; Edie et al., 2020; Sherwin et al., 2021; Aubrey et al., 2013)~~

60 [Robertson et al. \(2017\)](#); [Edie et al. \(2020\)](#); [Sherwin et al. \(2021\)](#); [Aubrey et al. \(2013\)](#)), whereas few studies have tested and quantified the accuracy of direct measurement methods (Riddick et al., 2022; Pihlatie et al., 2013; Christiansen et al., 2011).

Among the direct measurement methods, optical gas imaging cameras and Hi-Flow samplers both have limits of detection at roughly 20 g/hour (Ravikumar et al., 2017; Fox et al., 2019); ~~however.~~ [However](#) the stated uncertainties of optical gas imaging cameras in ~~(Fox et al., 2019)~~ [Fox et al. \(2019\)](#) of 3-15% are noted as being complex and likely much higher, and there have
65 been several studies that have highlighted measurement errors attributed to the Hi-Flow sampler (Connolly et al., 2019; Howard et al., 2015). As an alternative, the static chamber methodology is a [well-established](#) direct methane measurement method (Riddick et al., 2022; Pihlatie et al., 2013) traditionally used in the measurement of methane and other trace gas emissions emissions from soils (Conen et al., 1998; Raich et al., 1990; Smith et al., 2003). In recent years, the static chamber method has been applied in a wide range of settings such as the quantification of methane emissions from oil and gas wells (Lebel et
70 al., 2020; Williams et al., 2020; Kang et al., 2014; El Hachem et al., 2022; Townsend-Small et al., 2016, 2021; Saint-Vincent et al., 2020; Riddick et al., 2019), manholes (Fries et al., 2018; Williams et al., 2022), landfill vents and observation wells (Williams et al., 2022), and natural gas (NG) distribution infrastructure (Williams et al., 2022; Lamb et al., 2016, 2015). All of these sources vary in terms of their leakage properties and structural complexity with regards to the installation of chambers over leaking components. However, there are few studies that have quantified the measurement accuracy of the static chamber
75 method, and even fewer (Riddick et al., 2022; Lebel et al., 2020) that have tested the static chamber method in conditions that mimic the wide range of settings [in which they are now being used](#).

Different methane sources can emit methane at the same mass flowrates albeit at different volumetric flowrates depending on the methane concentration of the source. For example, biogas produced from landfills (~50% methane) will differ in its source methane concentration from NG from a distribution pipeline (~90% methane). To our knowledge, there have been no studies
80 that have tested the effects of a varying volumetric flowrate of methane as a factor to be considered in measurement accuracy for any methane measurement method. In terms of the structural complexity of these sites, several studies have employed large chambers with sub-optimal shapes to accommodate more complex sites. For example, a study by Lebel et al. 2020 in California targeting oil and gas wells used three static chambers that ranged in size (i.e., 33.8 litres to 32,659 litres) and shape (i.e., cylindrical and rectangular configurations). A key assumption in the static chamber method is that the air/gas within the
85 chamber is well mixed (Kang et al., 2014). If the emission rate is low and the chamber is large, it may be challenging to have the gases in the chamber be well-mixed. Chamber shapes such as rectangular have been shown to have "dead zones" where gases are not well-mixed, thereby lowering the effective volume of the chamber (Christiansen et al., 2011).

In this work we: 1) compile component level methane emission factors and categorize them by source category; 2) investigate prior controlled release testing of direct and indirect methane measurement methods to identify gaps in testing; 3) test the
90 impacts of physical factors such as the chamber shape, size, and usage of fans on the accuracy of methane flowrate estimates; and 4) test the effects of leak properties [\(i.e., mass flowrates, volumetric flowrates, concentration of methane in the leak\)](#) on the accuracy of chamber measurements. Our results highlight the applicability of the static chamber technique in direct measurements of methane emissions and provide the detail necessary to inform future measurement campaigns.

2 Methodology

95 We compiled a dataset of methane emission factors from the IPCC emission factor database (IPCC-EFDB, 2022) and categorized them into three source categories: agriculture, forestry, and other land use (AFOLU), energy, and waste. We removed all emission factors that were not related to a direct mass flowrates of methane at the component level. We removed all emission factors presented as methane flux rates (i.e., mass of methane emitted over a given area), and where possible, converted all remaining methane emission factors to component level methane mass flowrate presented in grams of methane emitted per
100 hour based on assumptions outlined in the SI - Table S1.

We performed a literature review of 37 controlled release experiments of methane using both indirect and direct methods to evaluate the range of methane flowrates tested and the methods used. The criteria for the literature review included all studies where methane was released at known mass flowrates of methane from above-ground points and excludes studies related to methane released in the subsurface, laboratory experiments of methane plume transport through porous media, and studies
105 where the tested mass flowrates of methane were not reported. We also exclude studies where methane quantification methods were tested on in-situ methane sources for validation. We categorized the studies based on the tested measurement platform which we grouped into eight categories: satellite (indirect method), manned aerial vehicle (indirect method), unmanned aerial vehicle (indirect method), stationary tower (indirect method), mobile surveying (indirect method), Hi-Flow sampler (direct method), camera-based (direct method), chamber measurements (direct method), and/or a combination of all the above.

110 We performed controlled releases of methane for the static chamber method outdoors on the McGill University campus in Montréal, Canada on June 2nd, 8th, and 10th, 2021. The weather for these days was sunny with sparse clouds with an average temperature of 25°C and wind speeds ranging from 5-15 kph (World Meteorological Station ID: 71612) . We designed the controlled release experiments to test a combination of six different factors: mass flowrate, volumetric flowrate, methane percentage of leaking gas, chamber shape (i.e., rectangular versus circular), chamber size (i.e., 14 L, 18 L, 322 L, and 2,265 L),
115 and the usage of the fans within the chamber. For the 322 L and 2,265 L chambers we used four battery-powered equipment cooling fans (airflow: 40 ft³ of air per minute) installed at the top of the chamber framework and oriented at 45° angles downward into the chamber, and for the smaller chambers we used one fan. ~~For the analysis of chamber size on quantification accuracy, we grouped the results from the 14 L and 18 L chamber together as a single ≤20 L category in order to have three different chamber sizes that span three orders of magnitude.~~ The tested chamber shapes were a 2,265 L rectangular chamber, a
120 322 L cylindrical chamber, a 18 L cylindrical chamber, and a 14 L rectangular chamber (Table 1). In addition, for a qualitative comparison between chamber sizes, we define ≤20 L chambers as small, and the 322 L and 2,265 L chambers as large. Other factors such as the aspect ratio of the chamber, the rigidity of the chamber material, and the type of chamber material are provided in Table 1.

We tested four different mass flowrates: 1.02 g/hour, 10.2 g/hour, 102 g/hour, and 512 g/hour. In order to provide a qualitative
125 comparison between mass flowrates, we define the mass flowrates of 1.02 and 10.2 g/hour as small flowrates, and the 102 and 512 g/hour releases as high flowrates. At least two different volumetric flowrates and two different methane concentrations were used for each of the mass flowrates we tested. The volumetric flowrates ranged from 0.238 SLPM (standard litres per

Table 1. Physical descriptions of chambers used for the controlled release experiments. Qualitative descriptions of chamber volume are indicated in parenthesis in the first row.

Chamber ID	A	B	C	D
Chamber size (L)	2,265 (large)	322 (large)	18 (small)	14 (small)
Shape	Rectangular	Cylindrical	Cylindrical	Rectangular
Structure	Collapsible	Collapsible	Solid	Solid
Material	PE tarp	PE plastic	HDPE plastic	HDPE plastic
Aspect ratio (<u>Height:width</u>)	5:4	18:11	1:1	4:5

PE = polyethylene, HDPE = high density polyethylene

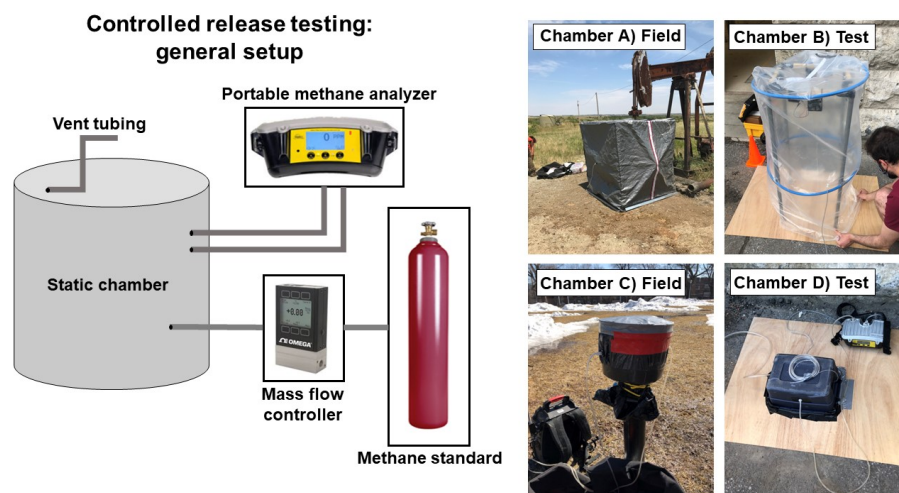


Figure 1. Diagram of the controlled release experiments for the static chamber method (left), with photos of chamber deployments in both field settings and during controlled release testing. The four chambers shown correspond to the four chambers we tested.

minute) to 23.8 SLPM for a total of ten unique leaks (Table 2). We controlled mass flowrates of methane using two mass flow controllers (Masterflex Mass Flowmeter Controller) with volumetric flow ranges of 50 to 0.5 SLPM and 1 to 0.01 SLPM (error of $\pm 0.8\%$ of reading and $\pm 0.2\%$ of full-scale range). Both mass flow controllers were factory calibrated prior to use for these experiments. Four different methane standards, prepared by Linde Canada, were used in our study: 100%, 50%, 10%, and 5% methane ($\pm 0.5\%$) all with a gas balance of air.

We performed the controlled release tests by releasing methane through Tygon tubing connected to the chamber. We oriented the tubing to the center of the chamber and secured it to the ground with tape to orient the flow upwards. We measured methane concentrations within the chamber continuously using a Sensit Portable Methane Detector which has a range of 0-100% methane, precision of 1 ppm, sampling frequency of 1 Hz, pump flow of 1 L per minute, and a reported accuracy of $\pm 10\%$. The analyzer was located outside the chambers with the analyzer inlets and outlets connected to the chamber ports in a closed

Table 2. Leak properties of ten different leaks used in controlled release experiments including percentage errors associated with mass flow controllers (MFC). Qualitative descriptions of the leak sizes are shown in parenthesis in the first column.

Methane mass flowrate (g/hour)	Volumetric flowrate (SLPM)	% methane	MFC error
1.02 (small flowrate)	0.238	10%	±1.64%
-	0.476	5%	±1.22%
10.2 (small flowrate)	0.476	50%	±1.64%
-	2.38	10%	±5.00%
-	4.76	5%	±2.90%
102 (large flowrate)	2.38	100%	±5.00%
-	4.76	50%	±2.90%
-	23.8	10%	±1.22%
512 (large flowrate)	11.9	100%	±1.64%
-	23.8	50%	±1.22%

SLPM = Standard litres per minute, MFC = Mass flow controller

loop with Tygon tubing of equal lengths for the inlet and outlet. Chambers were equipped with a 2 meter coil of 1/8" diameter Tygon tubing to allow for pressure equalisation between the chamber and the atmosphere (Christiansen et al., 2011). The duration of each controlled release was 5 minutes, with the exception of releases where fans were used within the chamber and methane concentrations were expected to reach the lower explosive limit of methane (i.e., 5% methane) before the 5 minute mark. Since the fans were not intrinsically safe, these experiments were terminated when the methane concentration within the chamber reached 35,000 ppm (i.e., 70% LEL). For this same reason, we did not test mass flowrates of 102 and 512 g/hour with the smaller chambers (i.e., ≤20 L) with fans present. When larger volume chambers were used, we were able to maintain methane levels within the chamber at safe limits.

Mass flowrates were calculated from the rate of methane build-up within the chamber over time multiplied by the volume of the chamber (1): where M is the mass flowrate of methane, dc/dt is the change in methane concentration over time, and V is the volume of the chamber.

$$M = \frac{dc}{dt} V \quad (1)$$

For some experiments, methane concentrations within the chamber were expected to rapidly reach steady-state. Steady-state is reached when methane concentrations no longer increase over time in the chamber and the concentration of methane within the chamber is equal to the concentration of the released gas. The residence time, or time to reach steady-state, is defined by (2): where τ is the residence time, V is the volume of the chamber, and Q is the volumetric flowrate of gas (i.e., methane and balance gas combined) into the chamber. For any controlled releases where the expected residence time was two minutes or shorter, we only used the initial ten data points for the linear regression to avoid the period of exponential decay as methane

concentrations approach steady-state (Pihlatie et al., 2013).

$$\tau = \frac{V}{Q} \quad (2)$$

We summarized the results of ~~each controlled test as an absolute percentage error~~ (2) the controlled release tests by calculating the percentage deviation of the the true versus measured methane flowrate (3): where E is the error in (%), Q_i is the estimated methane flowrate and Q is the actual methane flowrate. For each factor being investigated, we grouped the results depending on whether the measurement was an under- or overestimate of the true methane flowrate. We calculated the accuracy of measurements as a range spanning from the median of the over- and underestimated methane flowrates, respectively. We determined the bias of measurements as the average of the raw percentage errors to determine whether tests were biased more towards the under- or overestimation of methane flowrates.

$$E = \left| \frac{Q_i - Q}{Q} \right| * 100 \quad (3)$$

3 Results

3.1 Prior controlled methane releases and component level methane emissions

We compiled a total of 1,142 component level methane emission factors from the IPCC emission factor database (IPCC-EFDB, 2022). A total of 718 emission factors were from the AFOLU sector, 291 were from the energy sector, and 133 were from the waste sector. The emission factors ranged from 9.8×10^5 to -1.1×10^{-2} g/hour. We found that 1% of emission factors were above 100 g/hour, 5% of emission factors were above 10 g/hour, and 45% of emission factors were above 1 g/hour. The remaining 55% of emission factors were below 1 g/hour. Within the energy sector, ~~we found that~~ the highest component level emission factors were associated with liquid unloadings of storage tanks, flowback events for unconventional oil and gas wells, and fugitive emissions from flaring and venting at oil and gas wells which ranged from 9.8×10^5 to 1.6×10^5 g/hour. For the waste sector, ~~we found that~~ the highest component level emission factors were associated with leachate collections wells, pump stations, and sludge pits from landfills which ranged from 4.3×10^3 to 2.4×10^3 g/hour. For the AFOLU sector, ~~we found that~~ no component level emission factors were above 100 g/hour, but the highest component level methane emissions we observed from the AFOLU sector were from enteric fermentation from dairy cattle which emitted in the range of 10 g/hour (Figure 12).

We analyzed a total of ~~38-40~~ controlled release studies spanning from 2011 to 2022 (~~Figure 2~~ 2023 (Figure 3)). We found that ~~30 of the 38-32 of the 40~~ (i.e., 7980%) controlled release tests had upper methane emission ranges that exceeded 1,000 g/hour, with the highest tested flowrate at ~~1.037,2~~ $1.037,2 \times 10^6$ g/hour for a ~~manned aircraft based platform (Sherwin et al., 2021)~~ satellite based platform (Sherwin et al., 2023). We also ~~found that 28 of the 38 saw that 31 of the 40~~ (i.e., 7478%) controlled release tests had a lower methane emission range that exceeded 100 g/hour. ~~We found the~~ The majority of controlled releases focused on indirect sampling methods, especially ~~with~~ mobile surveying (i.e., 4245%) and manned aircraft (i.e., 3130%) based measurement platforms (Figure 2). Other indirect methods that were tested less frequently in our review were unmanned aircraft (i.e., 1915%), stationary tower (i.e., 1113%), and satellite (i.e., 35%) based methods. For direct measurement methods,

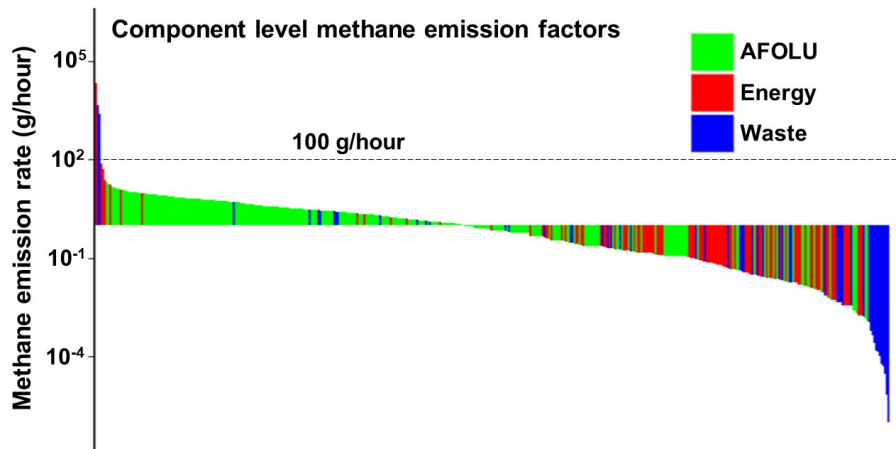


Figure 2. Component level methane emission factors from the IPCC emission factor database. Emission factors are categorized according to their respective IPCC source category. All emission factors were converted to methane mass flowrates based on assumptions outlined in the SI-Section 1.1.

we ~~found-observed~~ that camera-based methods were tested the most frequently (i.e., ~~11~~10%). We only found three studies ~~we found-that~~ conducted controlled methane releases for chamber based methodologies (Riddick et al., 2022; Pihlatie et al., 2013; Christiansen et al., 2011). We found that eight studies performed controlled releases using multiple measurement methods, with two studies (Singh et al., 2021; Riddick et al., 2022) employing five different methodologies. Overall, we found that the majority of controlled release tests we analyzed focused on indirect sampling methods, and tested methane emission ranges of ≥ 100 g/hour. Therefore, the testing we present here (1.02 g/hour to 512 g/hour) fills this gap and provides guidance for measuring ~~a-wide-an appropriate~~ range of component level methane sources.

3.2 Controlled releases of methane

The ~~median-absolute-error-accuracy~~ of our 64 controlled release experiments was ~~$\pm 14/-14\%$~~ with a standard deviation of ~~19%~~. ~~The average absolute percentage error was $\pm 20\%$ and the median absolute percentage error was $\pm 14\%$.~~ The lowest error we observed was 0.2%, and 25 of 64 controlled release tests (i.e., 39%) had percentage errors lower than $\pm 10\%$. Based on testing for bias, we found that the average percentage difference between actual and measured mass flowrates to be ~~-4~~3%, implying a small bias towards the underestimation of methane flowrates.

~~Violin-plots-of-percentage-errors-of-controlled-release-experiments-for-static-chambers-with-different-chamber-volumes (top); different chamber shapes (middle), and with and without fans for interior chamber mixing (bottom). Median percentage errors and bias are for each violin plot.~~

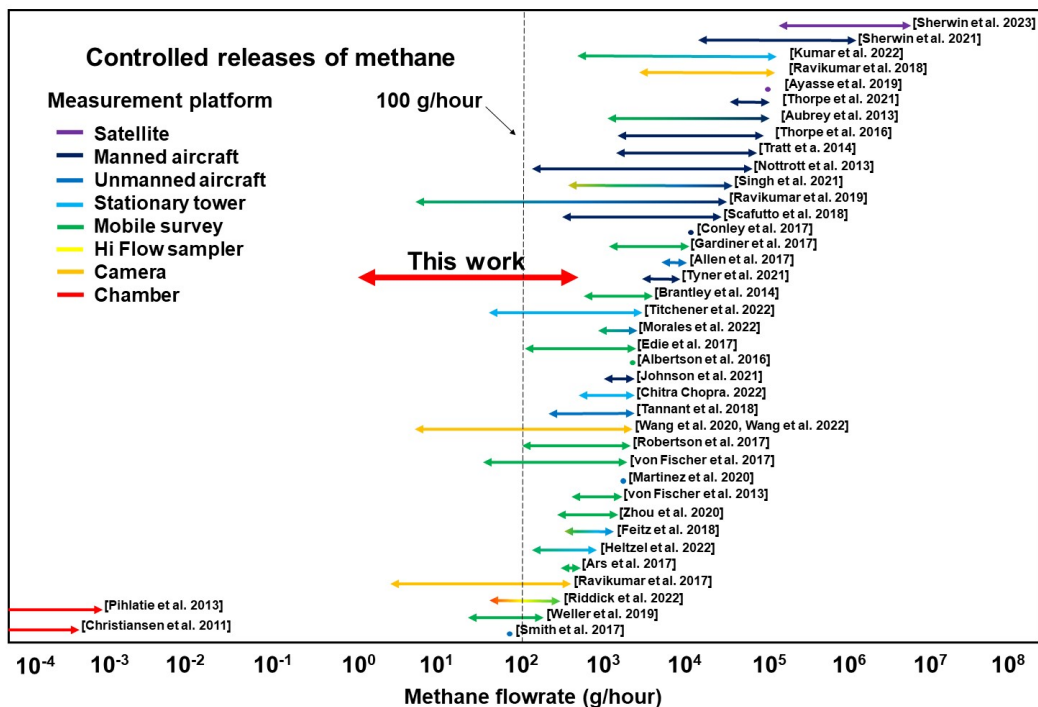


Figure 3. Summary of published literature of controlled releases of methane showing the range of methane emissions being tested and coloured according to the measurement platform used to quantify emissions.

3.2.1 Chamber volume

We found that the median percentage errors decreased. Our analysis of chamber volume with respect to quantification accuracy showed that the accuracy of measurements increased with smaller chamber volumes (Figure 34). The ≤ 20 L chambers had the lowest median percentage errors at $\pm 6\%$ highest accuracy at $+12/-12\%$ with an error standard deviation of $\pm 12\%$. The 322 L chamber had a higher median percentage error of $\pm 16\%$ lower accuracy of $+15/-17\%$ with a standard deviation of $22/23\%$. Our highest errors were measured from the largest 2,265 L chamber with a median error of $\pm 19\%$ an accuracy of $+50/-16\%$ and a standard deviation of 26%. We observed that the median value of the percentage error was lower than the mean for all chamber volumes, indicating an extreme distribution in error values. We analyzed all three chamber sizes for bias and found that the ≤ 20 L chambers showed a slight tendency for underestimation of flowrates with an average bias of $-2 \geq 0\%$, the 322 L chamber showed a stronger tendency towards the underestimation of flowrates at $-19-18\%$, and the 2,265 L chamber showed a slight bias towards overestimating flowrates at $+67\%$ (Figure 4).

3.2.2 Chamber shape

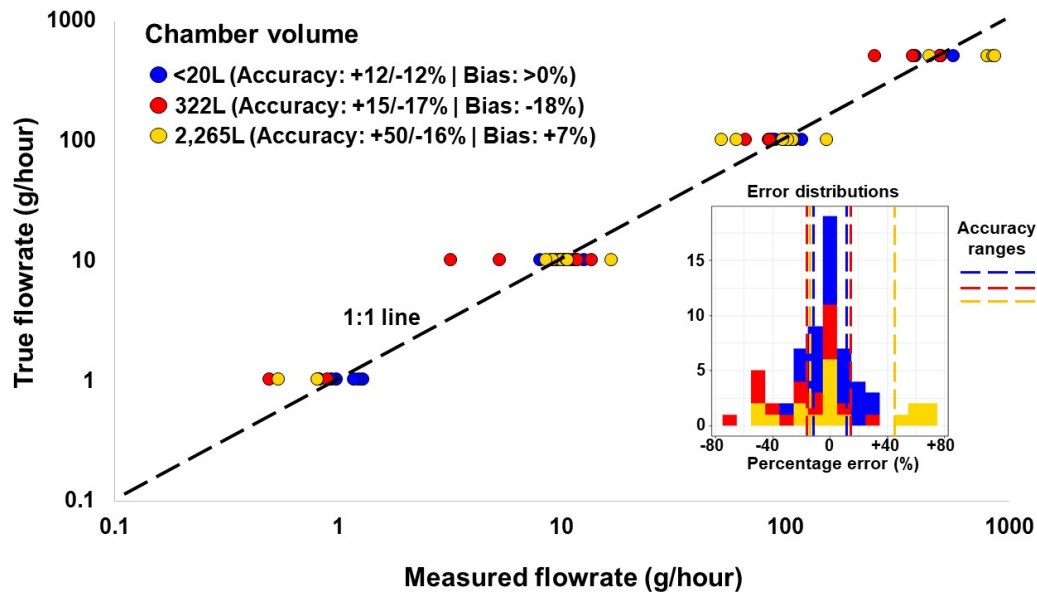


Figure 4. Parity plot showing the true versus measured measured methane flowrates for different chamber volumes. The distribution of actual percentage errors is shown in the right. Points and bars are coloured according to the different chamber volumes. The perfect fit line is shown by a dashed black line.

215 ~~We found~~ Our comparisons of different chamber shapes showed that the cylindrical chambers were more accurate than the rectangular chambers, showing a median percentage error of $\pm 13\%$ an accuracy of $+5/-14\%$ and a standard deviation of 18% (Figure 35). We found that the rectangular chambers showed a median percentage error of $\pm 15\%$ lower accuracy of $+17/-14\%$ with a standard deviation of 22%. Similar to the chamber volume, we found that the median percentage error was smaller than the average error for both chamber shapes, which indicates an extreme distribution in percentage errors. We analyzed both

220 chamber shapes for bias and found that the cylindrical chambers were biased towards the underestimation of methane flowrates with an average bias of $-14/-13\%$ whereas the rectangular chambers showed a small bias towards the overestimation of methane flowrates with an average bias of $+56\%$ (Figure 5).

3.2.3 Usage of fans

~~We found that~~ The most impactful physical factor we observed on chamber measurement accuracy was the presence of fans, where chambers with fans present were more accurate than chambers without fans with had a median percentage error of $\pm 6/-5\%$ with and a standard deviation of 17% (Figure 3). We found that 6), which was higher than chambers without fans had a median percentage error of \pm which had an accuracy of $+17/-17\%$ with and a standard deviation of 22%. For both data-sets we observed median values lower than the mean indicating a skewed data-set. We analyzed both data-sets for bias and found

225

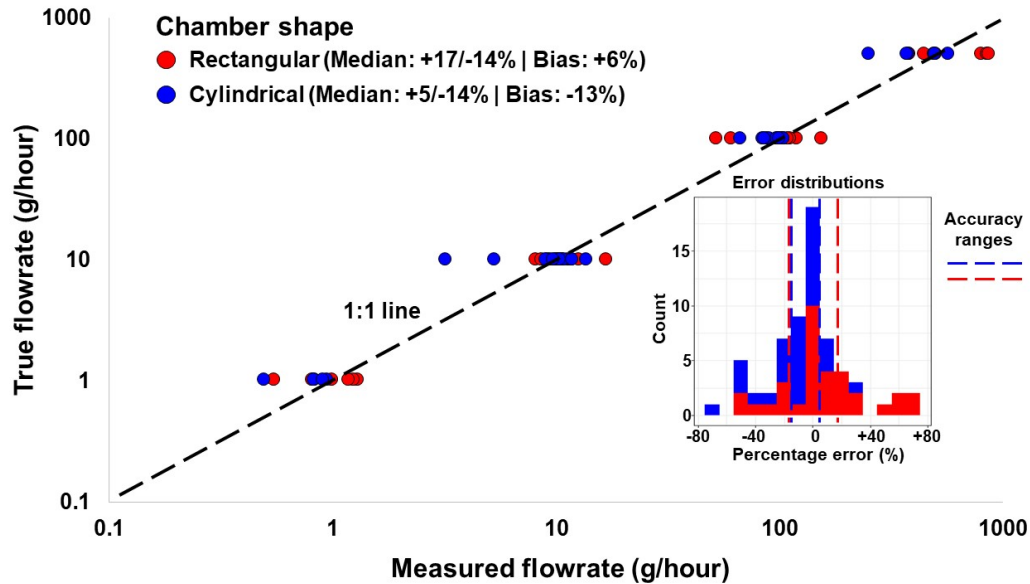


Figure 5. Parity plot showing the true versus measured measured methane flowrates for different chamber shapes. The distribution of actual percentage errors is shown in the right. Points and bars are coloured according to the different chamber shapes. The perfect fit line is shown by a dashed black line.

that both chambers with and without fans showed slight biases towards the underestimation of methane flowrates at $-6-2\%$ and $-2-4\%$ respectively (Figure 6).

3.3 Effects of leak properties

3.3.1 Mass flowrate

We tested four different mass flowrates for our controlled release tests: 1.02 g/hour, 10.2 g/hour, 102 g/hour, and 511 g/hour (Figure 4). We found that the lowest errors were measured from the 10.2 and 102 g/hour mass flowrates each with median percentage errors of ± 10 accuracies of $+8/-11\%$. The highest median percentage error of ± 26 and $+7/-13\%$ respectively. The lowest accuracy of $+56/-15\%$ was attributed to the highest mass flowrate of 512 g/hour. We found that the 1.02, 10.2, and 102 g/hour mass flowrates all had negative biases of -11% , $-2-1\%$, and $-8-6\%$ respectively. The mass flowrate of 512 g/hour had a slight bias of $+24\%$ towards the overestimation of mass flowrates. We observed a positive correlation between the mass flowrates and average percentage errors with an R^2 value of 0.52, implying a medium correlation between the accuracy of chamber measurements and the mass flowrate of methane, and also the highest upper accuracy estimate of $+46\%$ we observe among the different factors we analyzed.

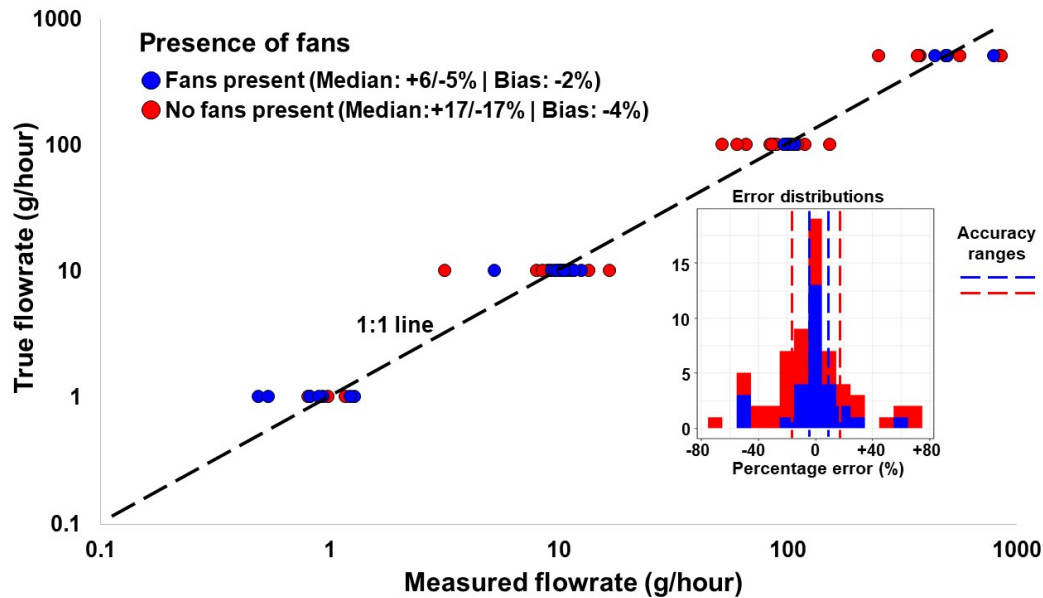


Figure 6. Parity plot showing the true versus measured methane flowrates for experiments with and without fans present. The distribution of actual percentage errors is shown in the right. Points and bars are coloured according to whether fans were present or not. The perfect fit line is shown by a dashed black line.

3.3.2 Volumetric flowrate

We analyzed six different volumetric flowrates for the range of methane flowrates we tested: 0.238 L/min, 0.476 L/min, 2.38 L/min, 4.76 L/min, 11.9 L/min, and 23.8 L/min (Figure 47). We found that the highest percentage errors lowest accuracies were attributed to both the highest and lowest volumetric flowrates with median percentage errors of ± 26 accuracies of $+50/-15\%$ and $\pm 20/+21/-14\%$ respectively. We found lower average percentage errors were associated for, whereas higher accuracy was observed with the mid-level volumetric flowrates of 11.8, 4.76, 2.38, and 0.476 SLPM with median percentage errors ranging from ± 10 accuracies ranging from $+26/-3\%$ to $\pm 15/+9/-11\%$. Similar to the mass flowrates, we also found a positive correlation between the median percentage errors and volumetric flowrates, albeit with a low correlation coefficient ($R^2 = 0.32$) the highest accuracies were associated with the mid-level volumetric flowrates while the lowest accuracies were observed at the upper and lower volumetric flowrates.

3.3.3 Methane percentage of leaking gas

We analyzed four different percentages of methane in the leaking gas for the controlled releases (Figure 4). We found that the highest percentage errors were attributed to 7). The lowest accuracies were associated with the 5% methane gas with a median percentage error of ± 17 an accuracy of $+31/-16\%$. We found lower average percentage errors were associated for gases with methane concentrations of, whereas the highest accuracies were observed with the 10% ,50 methane at $+15/-8\%$, and

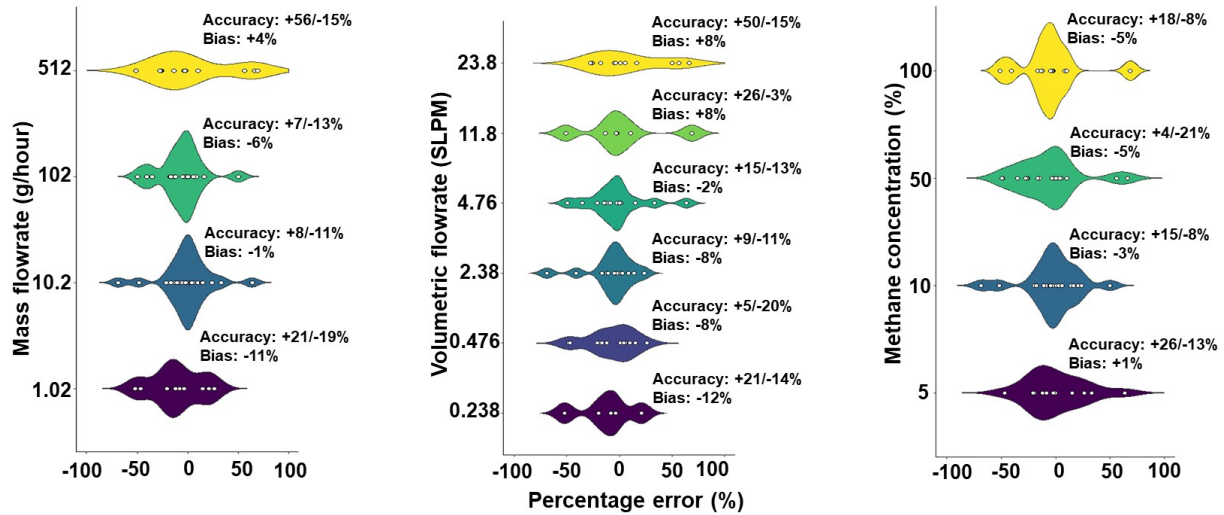


Figure 7. Violin plots of the percentage errors of true versus measured methane flowrates under varying mass flowrates (left), volumetric flowrates (middle), and gas concentrations (right) of methane. **Median**—The points represent the measured percentage errors, and **bias**—the shaded areas represent the relative density (on the y-axis) of the observed percentage errors. **Uncertainty ranges and biases** are displayed for each **violin plot factor**.

100. The three highest percentages of methane in the leaking gas all had small negative biases ranging from -5% with median percentage errors of ± 11 to -3%, ± 14 , whereas the 5% , and ± 11 methane leak had a slight positive bias at +1% respectively. Unlike the mass and volumetric flowrates, we found negative correlation between the methane percentage of the leaking gas and the median percentage error with a weak correlation coefficient ($R^2 = 0.25$).

260

3.4 Optimizing the static chamber method for accuracy

For consistency, we define release rates of 1.02 and 10.2 g/hour as small flowrates, and releases of 102 and 512 g/hour as high flowrates. In addition, we define chamber volumes ≤ 20 L as small, and chamber volumes of 322 L and 2,265 L as large. We found that analyzed how chamber configurations (i.e., chamber volume, usage of fans, chamber shapes) can be optimized to increase the accuracy of methane flowrate estimates. In general, we found that smaller sized chambers produced the lowest errors. Only one measurement—No measurements from a smaller sized chamber produced a percentage error above $\pm 30\%$, which was for a flowrate of 10.2 g/hour in a rectangular chamber without fans (Figure 5). We also found saw that smaller chambers performed similarly if fans were present or not, with smaller chambers with fans producing a median percentage error of ± 9 an accuracy of $\pm 16/-8\%$ and smaller chambers without fans producing a median error of \pm having an accuracy of $\pm 12/-13\%$ (Figure 5). We also found that smaller-. Smaller chambers performed slightly better if the chambers were cylindrical, with a median percentage error of ± 10 an accuracy of $\pm 3/-12\%$ compared to smaller rectangular chambers that had a median percentage error of ± 14 an accuracy of $\pm 16/-3\%$. For larger sized chambers (i.e., ≥ 20 L), we found that the usage of fans was

270

critical for reducing measurement error. Larger chambers with fans produced ~~a median percentage error of ± 6~~ an accuracy of $+4/-5\%$ compared to large chambers without fans which produced ~~a median percentage error of ± 49~~ an accuracy of $+63/-27\%$.
275 Therefore, although smaller chambers generally have lower errors than larger chambers, the errors in the larger chambers can be comparable to the smaller chambers when fans are used.

We found that chamber configurations could also be optimized according to the mass flowrate of methane. At low mass flowrates of methane (i.e., ≤ 100 g/hour), we found that smaller sized chambers were more accurate than larger chambers ~~, with median percentage errors of ± 10~~ with accuracies of $+12/-8\%$ and $\pm 16+15/-19\%$ respectively. ~~We found that the~~ The
280 usage of fans had little impact on the accuracy of smaller sized chambers at these low flowrates, with smaller chambers with fans producing ~~a median percentage error of ± 9~~ an accuracy of $+16/-8\%$ and smaller chambers without fans ~~producing median percentage errors of ± 13~~ having an accuracy of $+7/-13\%$. In contrast, ~~we found that~~ the usage of fans was important for the accuracy of larger chambers at these lower mass flowrates, ~~with larger~~. Larger chambers with fans ~~producing a median percentage error of ± 10~~ had an accuracy of $+4/-30\%$ and larger chambers without fans ~~producing a median percentage error of ± 27~~ had
285 an accuracy of $+48/-19\%$. In terms of chamber shape, ~~we found that~~ at low flowrates smaller cylindrical chambers ~~produced a median percentage error of ± 8~~ had an accuracy of $+1/-11\%$ compared to small rectangular chambers which produced ~~a median percentage error of ± 14~~ an accuracy of $+15/-3\%$. For larger chambers at low mass flowrates, we ~~found~~ observed a contrasting result with large rectangular chambers producing ~~a median percentage error of ± 14~~ an accuracy of $+6/-16\%$ and large cylindrical chambers producing a median percentage error of $\pm 33+24/-48\%$. Overall, ~~we found that at these smaller mass flowrates~~
290 ~~of methane, small cylindrical chambers with fans produced the lowest median percentage error of $\pm 10\%$ compared to $\pm 16\%$ from large chambers.~~

We observed similar results for optimizing chamber configurations for high methane mass flowrates (i.e., ≥ 100 g/hour). We found that smaller chambers (≤ 20 L) performed better than larger chambers with ~~a median percentage error of ± 11~~ accuracies of $+14/-13\%$ and $\pm 22+50/-16\%$ respectively. We ~~observe~~ found that the usage of fans was critical for measurement accuracy
295 for larger sized chambers at these higher mass flowrates of methane. Larger chambers with fans had ~~a median percentage error of ± 4~~ an accuracy of $+4/-4\%$ compared to larger chambers without fans which had ~~a median percentage accuracy of ± 50~~ an accuracy of $+66/-35\%$. For chamber shapes, ~~we found that~~ cylindrical chambers were more accurate than rectangular chambers with ~~median percentage errors of ± 13~~ an accuracy of $+6/-14\%$ compared to $\pm 17+26/-15\%$ from rectangular chambers. At ~~these~~
300 ~~higher mass flowrates of methane, we found that large cylindrical chambers with fans produced the lowest average percentage errors of~~ were highly accurate at $+2/-3\%$ of the true methane flowrate.

From all of the controlled release experiments we performed, we saw that the median absolute error of $\pm 14\%$ was lower than the mean error of 20%, indicating a heavy-tailed distribution of measurement errors. As such, we analyzed all controlled release experiments where the resulting error exceeded 40% to assess the potential cause of these erroneous measurements. A total of 12 controlled releases had quantification errors that exceeded 40% (SI - Figure S1). All of these experiments were
305 conducted on larger volume chambers (i.e., 322L and 2,265L), and 8 of the 12 had no fans present. Based on a comparison of the fit of the linear regressions, we found that these 12 experiments did have good correlation between methane concentrations and time with R^2 values averaging 0.91 when compared to the rest of the data-set (mean $R^2 = 0.96$). Notably, 3 of the 12

high-error measurements had very high R^2 values exceeding 0.99, with an example being shown in the bottom left of Figure 8. We observed a similar phenomena with a single controlled release performed with an “ideal” and “non-ideal” chamber seal which is shown in the SI - Section 1, where a “non-ideal” chamber seal produced a high R^2 value yet underestimated the methane flowrate by 43%.

4 Discussion

Our compilation of component level methane flowrates from the IPCC emission factor database showed that 99% of the component level emission rates fall below the 100 g/hour level. Therefore, it is important to develop and test methane quantification methods for these lower methane flowrates (i.e., ≤ 100 g/hour). Quantification of methane emissions at the component level provides a level of detail necessary to develop actionable mitigation strategies through the clear identification of emitting components. Most controlled release studies focus on indirect sampling methods which are effective in measuring methane emissions at the site and/or facility level scale. While these data are important for validating greenhouse gas inventories and quantifying emissions from super-emitting methane sources (Brandt et al., 2016; Ravikumar et al., 2017), emissions data at the component level are also needed to ~~construct~~ improve bottom-up greenhouse gas inventories and develop actionable mitigation strategies. Many of the component level sources we consider such as manholes, livestock, abandoned oil and gas wells, and NG pipeline leaks have all been shown to be significant methane sources at municipal, provincial/state/territorial, and national levels (Williams et al., 2022, 2020; El Hachem et al., 2022; Seiler et al., 1983; Kang et al., 2016; Hendrick et al., 2016). These sources are all characterized by low methane emissions rates below 100 g/hour range on average, which are challenging to measure using indirect methods. Several studies have highlighted the super-emitting nature of methane emission sources, particularly from the NG sector (Brandt et al., 2016). However, the upper range of super-emitting methane sources varies depending on the source being measured. For example, a study of methane emissions from Montreal, Canada, found that both residential NG meter-sets and manholes were significant sources of methane for the city despite having maximum methane emission rates of 4.2 and 33 g/hour respectively (Williams et al., 2022). While many controlled release studies focus on a higher range of methane emissions, it is still important that methods are developed and tested for lower methane emitting sources.

In addition to the factors we tested, there are several other sources of uncertainty in the static chamber method that we ~~do~~ did not investigate. One factor that could impact measurement accuracy is the effectiveness of the chamber seal. An improper chamber seal could lead to intrusion from atmospheric air which dilutes the chamber headspace leading to an underestimation of the true methane flow rate (SI - Section 1). Typically in field settings, chambers are sealed to the ground (Kang et al., 2016; Lebel et al., 2020). In some cases, chambers can be sealed above-ground to an emitting component (Figure 1). A variety of different methods have been used to create these chamber-to-site seals, such as tape, bungie chords, chamber collars, sand, snow, etc (Williams et al., 2020; Lebel et al., 2020; Kang et al., 2016). In our experience, smaller chambers are easier to seal to an emitting component given the smaller size and ease in identifying potential breaches. Ensuring a proper chamber seal in larger chambers is more difficult due to the chamber size but the seal is achievable under stable environmental conditions. The methane concentration measurement method is one aspect of the static chamber method that will affect both the

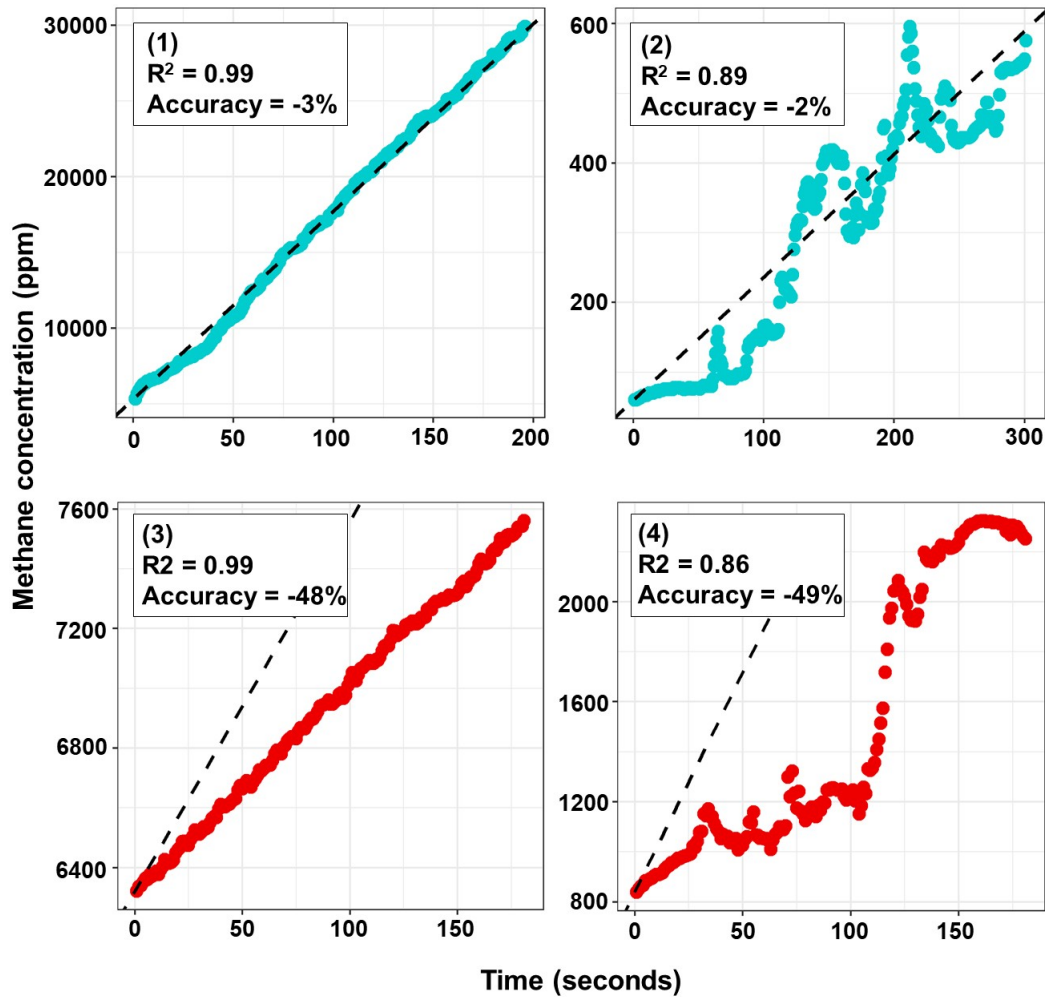


Figure 8. Results—Four examples of all—raw controlled release experiments—of—data showing methane sectioned—by—mass flowrates concentrations versus time. Points are sized according to The measured concentrations within the volume of the chamber —are shown by the coloured according to whether fans were used or not dots, and assigned the true or expected concentrations are indicated by the dashed lines. Points coloured blue indicate a shape corresponding to measurement error less than 40%, and the shape of chamber used points coloured red indicate a measurement error greater than 40%. The examples shown are 1) high R^2 value and high quantification accuracy; 2) low R^2 value and high quantification accuracy; 3) high R^2 value and low quantification accuracy; 4) low R^2 value and low quantification accuracy.

measurement accuracy and sensitivity of the [static chamber](#) method. In this work we use a portable greenhouse gas analyzer to continuously measure methane concentrations within the chamber. Uncertainty related to the frequency of methane concentration measurement and the accuracy and precision of the greenhouse gas analyzer are all important factors related to uncertainty.

Furthermore, portable greenhouse gas analyzers can generally be classified as either measuring a full range of methane concentrations at the cost of precision at lower methane concentrations (i.e., ≤ 10 ppm methane), or measuring methane with high precision at the cost of an upper measurement range (i.e., 1,000 ppm). Therefore, the selection of the greenhouse analyzer can also be optimized according to the methane source being measured to improve accuracy. Other factors such as the release point of the emitted gas; presence of multiple emission sources; environment; chamber rigidity; method and strength of interior chamber mixing; and position of the gas sampling points are all factors that could also impact measurement uncertainty.

Further analysis of the impacts of these factors on measurement accuracy would be beneficial for guiding ideal deployment of the static chamber method for the quantification of component-level methane sources.

Our results ~~show~~ showed that the static chamber methodology can quantify methane emissions ranging from 1.02 g/hour to 512 g/hour with ~~a median percentage~~ an accuracy of +14/-14%. In comparison to indirect methods, Johnson et al. (2023) state that their aircraft-based method has a multi-pass uncertainty range of -46/+54%, which roughly corresponds to an absolute error of $\pm 14.50\%$. Overall, we found a small bias towards the underestimation of methane flowrates which is similar to prior studies (Lebel et al., 2020; Pihlatie et al., 2013). In von Fischer et al. (2017), they state an uncertainty range of -24/+32% after five mobile survey passes, which roughly corresponds to an absolute error of $\pm 28\%$. With regards to other controlled release tests on static chambers, we do find that our median uncertainty of +14/-14% falls within the 10-20% range reported by Lebel et al. (2020) and Pihlatie et al. (2013). For the larger chambers ~~we find~~, we found that the usage of fans ~~is~~ was critical for maximizing accuracy, which is expected given the larger volume of air that is required to be mixed. ~~We also find that~~ All of the 12 largest measurement errors occurred from large volume chambers, with 8 of those controlled releases having no fans present. The larger chambers we used were all collapsible chambers, which could have impacted measurement accuracy through pressure pumping in the chamber headspace through wind impacting the collapsible chamber walls and altering the chamber volumes throughout the experiment. The large volume chambers we used are designed to accommodate odd site shapes encountered in the field, such as abandoned oil and gas wells (Figure 1). Future controlled release studies that test larger volume rigid chambers would help elucidate the cause of these high errors. We also noted that all of these large measurement error experiments showed high R^2 values above 0.80, meaning that they would be difficult to distinguish based on the goodness-of-fit of the measurement data alone. Furthermore, several experiments showed relatively poor R^2 values but good measurement accuracy (Figure 8), adding to this difficulty. We found that chamber shape is more important for larger chambers than smaller chambers, with the large cylindrical chamber performing better than the large rectangular chamber whereas we did not find any difference between the smaller sized chambers with respect to shape. Ideally static chambers should be constructed to minimize potential "dead zones" where gases can accumulate (Christiansen et al., 2011), and cylindrical, or even semi-spherical or spherical chambers, should facilitate easier mixing of ~~air~~ the chamber headspace.

At higher methane flowrates (≥ 100 g/hour) we found that our large cylindrical chamber with fans quantified methane emissions with the highest accuracy (i.e., +2/-3%) of any chamber combination we used throughout this study. In addition, a methane source such as an ~~abandoned~~ oil and gas well can have multiple emitting components (e.g., pipe flanges, valves, surface casing vents, soil gas migration) which could be missed if using smaller sized chambers. Methane concentrations within a smaller chamber can also rapidly reach explosive levels which can pose safety concerns if the environment is not

intrinsically safe (Riddick et al., 2022), but these risks can be minimized at little cost to accuracy if fans are omitted. Furthermore, intrinsically safe methods of chamber mixing such as external pumps could be used to mix air within chambers, regardless of the size of chamber. Theoretically, there is no upper methane flowrate limitation of the static chamber method, and utilizing large chambers such as the 32,000 L chamber used in Lebel et al. (2020) could theoretically quantify methane flowrates in the 100-200 kg/hour range. However, there are practical limitations to directly measuring components emitting methane at these high levels, the most notable being safety concerns and access issues (e.g., measuring flare stacks and liquid storage tank unloadings). Another factor to consider is the time to reach steady-state. Enclosing a high methane emitting source within a smaller chamber causes methane concentrations within the chamber to rapidly reach steady-state, essentially creating a dynamic chamber, which we do not test in this work (Pedersen et al., 2010; Levy et al., 2011). Overall, our findings indicate that small chambers (i.e., ≤ 20 L), regardless of the chamber shape and usage of fans, can be used to quantify component level methane flowrates with an accuracy of $\pm 11\%$ for methane flowrates ranging from 1.02 to 512 g/hour. If larger chambers are required/desired, optimal configurations (i.e., fans present and cylindrical shapes) will produce errors $\pm 3\%$ for high methane flowrates (i.e., ≥ 100 g/hour).

5 Conclusions

Our results have shown that the static chamber methodology can be an effective and accurate method for the quantification of component level methane flowrates. While indirect sampling methods have been tested extensively, there is a need to test direct sampling methods given their ability to quantify methane emissions at the component level, which is important for developing actionable mitigation strategies. The static chamber method is logistically simple to implement and adaptable to multiple methane sources, making it a viable measurement option for many component level emission sources. Going forward, there are opportunities to improve the static chamber design to reduce measurement uncertainties. Our work provides the testing and design information for the static chamber methodology, thereby contributing to the range of measurement tools needed to quantify methane emission rates from all sources.

Author contributions. JPW wrote and edited this manuscript, including the data analysis and development of figures and tables. JPW, MK, and KEH all contributed to the development of the controlled release testing measurement plan and the editing of the manuscript. JPW and KEH performed the controlled release experiments.

Competing interests. The authors declare no competing interests

Data availability. Excel files of the IPCC emission factor database compilation are available for the AFOLU, Energy, and Waste sectors. Conversions to component level emission factors and justifications are provided within each excel file.

Acknowledgements. We would like to acknowledge the members of the Kang Lab at McGill University for their valuable insights in organizing, performing, and summarizing the work in this manuscript.

References

- 410 Albertson, John D., et al. "A mobile sensing approach for regional surveillance of fugitive methane emissions in oil and gas production." *Environmental science & technology* 50.5 (2016): 2487-2497.
- Allen, Grant, et al. "The development and validation of an unmanned aerial system (UAS) for the measurement of methane flux." *AGU Fall Meeting Abstracts*. Vol. 2017. 2017.
- [Alvarez, Ramón A., et al. "Assessment of methane emissions from the US oil and gas supply chain." *Science* 361.6398 \(2018\): 186-188.](#)
- 415 Ars, Sébastien, et al. "Statistical atmospheric inversion of local gas emissions by coupling the tracer release technique and local-scale transport modelling: a test case with controlled methane emissions." *Atmospheric Measurement Techniques* 10.12 (2017): 5017-5037.
- Aubrey, A. D., et al. "Demonstration of Technologies for Remote and in Situ Sensing of Atmospheric Methane Abundances-a Controlled Release Experiment." *AGU Fall Meeting Abstracts*. Vol. 2013. 2013.
- Ayasse, Alana K., et al. "Methane mapping with future satellite imaging spectrometers." *Remote Sensing* 11.24 (2019): 3054.
- 420 Brandt, Adam R., Garvin A. Heath, and Daniel Cooley. "Methane leaks from natural gas systems follow extreme distributions." *Environmental science & technology* 50.22 (2016): 12512-12520.
- Brantley, Halley L., et al. "Assessment of methane emissions from oil and gas production pads using mobile measurements." *Environmental science & technology* 48.24 (2014): 14508-14515.
- Chopra, Chitra. Quantification and mapping of methane emissions using eddy covariance in a controlled subsurface synthetic natural gas release experiment. Diss. Master's thesis). University of British Columbia. <https://doi.org/10.14288/1.0395399>, 2020.
- 425 Christiansen, Jesper Riis, et al. "Assessing the effects of chamber placement, manual sampling and headspace mixing on CH₄ fluxes in a laboratory experiment." *Plant and soil* 343 (2011): 171-185.
- Conen, F., and K. A. Smith. "A re-examination of closed flux chamber methods for the measurement of trace gas emissions from soils to the atmosphere." *European Journal of Soil Science* 49.4 (1998): 701-707.
- 430 Conley, Stephen, et al. "Application of Gauss's theorem to quantify localized surface emissions from airborne measurements of wind and trace gases." *Atmospheric Measurement Techniques* 10.9 (2017): 3345-3358.
- Cooper, Jasmin, Luke Dubey, and Adam Hawkes. "Methane detection and quantification in the upstream oil and gas sector: the role of satellites in emissions detection, reconciling and reporting." *Environmental Science: Atmospheres* (2021).
- Connolly, J. I., R. A. Robinson, and T. D. Gardiner. "Assessment of the Bacharach Hi Flow® Sampler characteristics and potential failure modes when measuring methane emissions." *Measurement* 145 (2019): 226-233.
- 435 Cusworth, Daniel H., et al. "Strong methane point sources contribute a disproportionate fraction of total emissions across multiple basins in the United States." *Proceedings of the National Academy of Sciences* 119.38 (2022): e2202338119.
- de Foy, Benjamin, et al. "Investigating high methane emissions from urban areas detected by TROPOMI and their association with untreated wastewater." *Environmental Research Letters* 18.4 (2023): 044004.
- 440 El Hachem, Khalil, and Mary Kang. "Methane and hydrogen sulfide emissions from abandoned, active, and marginally producing oil and gas wells in Ontario, Canada." *Science of The Total Environment* 823 (2022): 153491.
- Etiopie, Giuseppe, et al. "Global geological methane emissions: An update of top-down and bottom-up estimates." *Elementa: Science of the Anthropocene* 7 (2019).

- 445 Edie, Rachel, et al. "Constraining the accuracy of flux estimates using OTM 33A." *Atmospheric Measurement Techniques* 13.1 (2020): 341-353.
- [Environment and Climate Change Canada. National Inventory Report 1990-2021: Greenhouse Gas Sources and Sinks in Canada Available: https://publications.gc.ca/collections/collection_2023/eccc/En81-4-2021-1-eng.pdf](https://publications.gc.ca/collections/collection_2023/eccc/En81-4-2021-1-eng.pdf)
- 450 [European-Commission, Joint EU-US Press Release on the Global Methane Pledge https://ec.europa.eu/commission/presscorner/detail/en/IP_21_4785](https://ec.europa.eu/commission/presscorner/detail/en/IP_21_4785)
[accessed 19 September 2021, 2021.](https://ec.europa.eu/commission/presscorner/detail/en/IP_21_4785)
- [Feitz, Andrew, et al. "The Ginninderra CH₄ and CO₂ release experiment: An evaluation of gas detection and quantification techniques." *International Journal of Greenhouse Gas Control* 70 \(2018\): 202-224.](https://doi.org/10.1016/j.ijggc.2018.02.002)
- Fox, Thomas A., et al. "A review of close-range and screening technologies for mitigating fugitive methane emissions in upstream oil and gas." *Environmental Research Letters* 14.5 (2019): 053002.
- 455 Fries, Anastasia E., et al. "Street-level emissions of methane and nitrous oxide from the wastewater collection system in Cincinnati, Ohio." *Environmental Pollution* 236 (2018): 247-256.
- Gardiner, Tom, et al. "Field validation of remote sensing methane emission measurements." *Remote Sensing* 9.9 (2017): 956.
- Heltzel, Robert, et al. "Understanding the Accuracy Limitations of Quantifying Methane Emissions Using Other Test Method 33A." *Environments* 9.4 (2022): 47.
- 460 Hendrick, Margaret F., et al. "Fugitive methane emissions from leak-prone natural gas distribution infrastructure in urban environments." *Environmental Pollution* 213 (2016): 710-716.
- Howard, Touché, Thomas W. Ferrara, and Amy Townsend-Small. "Sensor transition failure in the high flow sampler: Implications for methane emission inventories of natural gas infrastructure." *Journal of the Air & Waste Management Association* 65.7 (2015): 856-862.
- IEA (2021), Net Zero by 2050, IEA, Paris <https://www.iea.org/reports/net-zero-by-2050>, License: CC BY 4.0
- 465 Intergovernmental Panel on Climate Change. "IPCC Emission Factor Database." *Environmental Protection* (2022). Accessed: December 14, 2022
- Johnson, Matthew R., David R. Tyner, and Alexander J. Szekeres. "Blinded evaluation of airborne methane source detection using Bridger Photonics LiDAR." *Remote Sensing of Environment* 259 (2021): 112418.
- [Johnson, Matthew R., David R. Tyner, and Bradley M. Conrad. "Origins of oil and gas sector methane emissions: on-site investigations of aerial measured sources." *Environmental Science & Technology* 57.6 \(2023\): 2484-2494.](https://doi.org/10.1016/j.envsci.2023.107494)
- 470 Kang, Mary, et al. "Direct measurements of methane emissions from abandoned oil and gas wells in Pennsylvania." *Proceedings of the National Academy of Sciences* 111.51 (2014): 18173-18177.
- Kang, Mary, et al. "Identification and characterization of high methane-emitting abandoned oil and gas wells." *Proceedings of the National Academy of Sciences* 113.48 (2016): 13636-13641.
- 475 Kang, Mary, et al. "Reducing methane emissions from abandoned oil and gas wells: Strategies and costs." *Energy Policy* 132 (2019): 594-601.
- Kumar, Pramod, et al. "Near-field atmospheric inversions for the localization and quantification of controlled methane releases using stationary and mobile measurements." *Quarterly Journal of the Royal Meteorological Society* (2022).
- Lamb, Brian K., et al. "Direct measurements show decreasing methane emissions from natural gas local distribution systems in the United States." *Environmental Science & Technology* 49.8 (2015): 5161-5169.
- 480 Lamb, Brian K., et al. "Direct and indirect measurements and modeling of methane emissions in Indianapolis, Indiana." *Environmental Science & Technology* 50.16 (2016): 8910-8917.

- Label, Eric D., et al. "Methane emissions from abandoned oil and gas wells in California." *Environmental Science & Technology* 54.22 (2020): 14617-14626.
- 485 [Levy, Peter E., et al. "Quantification of uncertainty in trace gas fluxes measured by the static chamber method." *European Journal of Soil Science* 62.6 \(2011\): 811-821.](#)
- [MacKay, Katlyn, et al. "Methane emissions from upstream oil and gas production in Canada are underestimated." *Scientific reports* 11.1 \(2021\): 1-8.](#)
- Martinez, Benjamin, Thomas W. Miller, and Azer P. Yalin. "Cavity ring-down methane sensor for small unmanned aerial systems." *Sensors* 20.2 (2020): 454.
- 490 Morales, Randolph, et al. "Controlled-release experiment to investigate uncertainties in UAV-based emission quantification for methane point sources." *Atmospheric Measurement Techniques* 15.7 (2022): 2177-2198.
- Improving Characterization of Anthropogenic Methane Emissions in the United States. Washington, DC: The National Academies Press. <https://doi.org/10.17226/24987>
- 495 Nottrott, A., et al. "Measurements and Simulations of Methane Concentration During a Controlled Release Experiment for Top-down Emission Quantification by In Situ and Remote Sensing." AGU Fall Meeting Abstracts. Vol. 2013. 2013.
- [Pedersen, A. R., S. O. Petersen, and K. Schelde. "A comprehensive approach to soil-atmosphere trace-gas flux estimation with static chambers." *European Journal of Soil Science* 61.6 \(2010\): 888-902.](#)
- Pihlatie, Mari K., et al. "Comparison of static chambers to measure CH₄ emissions from soils." *Agricultural and forest meteorology* 171 (2013): 124-136.
- 500 Raich, J. W., R. D. Bowden, and P. Ao Steudler. "Comparison of two static chamber techniques for determining carbon dioxide efflux from forest soils." *Soil science society of America Journal* 54.6 (1990): 1754-1757.
- Ravikumar, Arvind P., Jingfan Wang, and Adam R. Brandt. "Are optical gas imaging technologies effective for methane leak detection?." *Environmental science & technology* 51.1 (2017): 718-724.
- 505 Ravikumar, Arvind P., et al. "'Good versus good enough?' Empirical tests of methane leak detection sensitivity of a commercial infrared camera." *Environmental science & technology* 52.4 (2018): 2368-2374.
- Ravikumar, Arvind P., et al. "Single-blind inter-comparison of methane detection technologies—results from the Stanford/EDF Mobile Monitoring Challenge." *Elementa: Science of the Anthropocene* 7 (2019).
- Riddick, Stuart N., et al. "Measuring methane emissions from abandoned and active oil and gas wells in West Virginia." *Science of the Total Environment* 651 (2019): 1849-1856.
- 510 Riddick, Stuart ~~and Aneona, Riley and Bell, Clay and Duggan, Aidan and Vaughn, Tim and Bennett, Kristine and Zimmerle, Dan N., et al.~~ ["Quantitative A quantitative comparison of methods used to estimate methane emissions from small point sources measure smaller methane emissions typically observed from superannuated oil and gas infrastructure." *Atmospheric Measurement Techniques Discussions* 15.21 \(2022\): 1-136285-6296.](#)
- 515 Robertson, Anna M., et al. "Variation in methane emission rates from well pads in four oil and gas basins with contrasting production volumes and compositions." *Environmental science & technology* 51.15 (2017): 8832-8840.
- [Rutherford, Jeffrey S., et al. "Closing the methane gap in US oil and natural gas production emissions inventories." *Nature communications* 12.1 \(2021\): 4715.](#)

- Saint-Vincent, Patricia MB, et al. "An analysis of abandoned oil well characteristics affecting methane emissions estimates in the Cherokee platform in Eastern Oklahoma." *Geophysical Research Letters* 47.23 (2020): e2020GL089663.
- 520 Scafutto, Rebecca DeÍPapa Moreira, et al. "Evaluation of thermal infrared hyperspectral imagery for the detection of onshore methane plumes: Significance for hydrocarbon exploration and monitoring." *International journal of applied earth observation and geoinformation* 64 (2018): 311-325.
- Seiler, W., et al. "Methane emission from rice paddies." *Journal of Atmospheric Chemistry* 1.3 (1983): 241-268.
- 525 Sherwin, Evan D., et al. "Single-blind test of airplane-based hyperspectral methane detection via controlled releases." *Elementa: Science of the Anthropocene* 9.1 (2021).
- [Sherwin, Evan D., et al. "Single-blind validation of space-based point-source detection and quantification of onshore methane emissions." *Scientific Reports* 13.1 \(2023\): 3836.](#)
- Singh, Devyani, et al. "Field Performance of New Methane Detection Technologies: Results from the Alberta Methane Field Challenge." (2021).
- 530 Smith, Keith A., and Malcolm S. Cresser. "Measurement of trace gases, I: gas analysis, chamber methods, and related procedures." *Soil and Environmental Analysis*. CRC Press, 2003. 394-433.
- Smith, Brendan J., et al. "Fugitive methane leak detection using sUAS and miniature laser spectrometer payload: System, application and groundtruthing tests." 2017 International Conference on Unmanned Aircraft Systems (ICUAS). IEEE, 2017.
- 535 Tannant, Dwayne, et al. "Evaluation of a drone and laser-based methane sensor for detection of fugitive methane emissions." *British Columbia Oil and Gas Research and Innovation Society: Vancouver, BC, Canada* (2018).
- Thorpe, Andrew K., et al. "Mapping methane concentrations from a controlled release experiment using the next generation airborne visible/infrared imaging spectrometer (AVIRIS-NG)." *Remote Sensing of Environment* 179 (2016): 104-115.
- Thorpe, Andrew K., et al. "Improved methane emission estimates using AVIRIS-NG and an Airborne Doppler Wind Lidar." *Remote Sensing of Environment* 266 (2021): 112681.
- 540 Titchener, James, et al. "Single photon Lidar gas imagers for practical and widespread continuous methane monitoring." *Applied Energy* 306 (2022): 118086.
- Townsend-Small, Amy, et al. "Emissions of coalbed and natural gas methane from abandoned oil and gas wells in the United States." *Geophysical Research Letters* 43.5 (2016): 2283-2290.
- 545 Townsend-Small, Amy, and Jacob Hoschouer. "Direct measurements from shut-in and other abandoned wells in the Permian Basin of Texas indicate some wells are a major source of methane emissions and produced water." *Environmental Research Letters* 16.5 (2021): 054081.
- Tratt, David M., et al. "Airborne visualization and quantification of discrete methane sources in the environment." *Remote sensing of environment* 154 (2014): 74-88.
- Tyner, David R., and Matthew R. Johnson. "Where the methane is—Insights from novel airborne LiDAR measurements combined with ground survey data." *Environmental Science & Technology* 55.14 (2021): 9773-9783.
- 550 [U.S. Environmental Protection Agency \(EPA\), "Inventory of U.S. Greenhouse Gas Emissions and Sinks: 1990-2021" \(EPA, 2021\) https://www.epa.gov/system/files/documents/2023-04/US-GHG-Inventory-2023-Main-Text.pdf](https://www.epa.gov/system/files/documents/2023-04/US-GHG-Inventory-2023-Main-Text.pdf)
- Varon, Daniel J., et al. "Quantifying methane point sources from fine-scale satellite observations of atmospheric methane plumes." *Atmospheric Measurement Techniques* 11.10 (2018): 5673-5686.
- 555 von Fischer, J. C., et al. "Quantifying urban natural gas leaks from street-level methane mapping: measurements and uncertainty." *AGU Fall Meeting Abstracts*. Vol. 2013. 2013.

- von Fischer, Joseph C., et al. "Rapid, vehicle-based identification of location and magnitude of urban natural gas pipeline leaks." *Environmental Science & Technology* 51.7 (2017): 4091-4099.
- 560 Wang, Jingfan, et al. "Machine vision for natural gas methane emissions detection using an infrared camera." *Applied Energy* 257 (2020): 113998.
- [Wang, Jingfan, et al. "VideoGasNet: Deep learning for natural gas methane leak classification using an infrared camera." *Energy* 238 \(2022\): 121516.](#)
- 565 Weller, Zachary D., Duck Keun Yang, and Joseph C. von Fischer. "An open source algorithm to detect natural gas leaks from mobile methane survey data." *PLoS One* 14.2 (2019): e0212287.
- Williams, James P., Amara Regehr, and Mary Kang. "Methane emissions from abandoned oil and gas wells in Canada and the United States." *Environmental science & technology* 55.1 (2020): 563-570.
- Williams, James P., et al. "Differentiating and Mitigating Methane Emissions from Fugitive Leaks from Natural Gas Distribution, Historic Landfills, and Manholes in Montréal, Canada." *Environmental Science & Technology* 56.23 (2022): 16686-16694.
- 570 Zhou, Xiaochi, et al. "Mobile measurement system for the rapid and cost-effective surveillance of methane and volatile organic compound emissions from oil and gas production sites." *Environmental Science & Technology* 55.1 (2020): 581-592.