

Manuscript ID: amt-2023-91

First Results of Cloud Retrieval from Geostationary Environmental Monitoring Spectrometer

Bo-Ram Kim, Gyuyeon Kim, Minjeong Cho, Yong-Sang Choi*, and Jhoon Kim

Item-by-item responses to Reviewer 1's comments:

We appreciated Reviewer 1's interest in our study and your valuable suggestion. We have carefully reviewed your comments and revised the manuscript as clearly as possible. We have highlighted the revised sections in blue in the manuscript. The revised manuscript has been proofread.

1) To improve the structure of this paper, it is necessary to revise the order of sections. Especially, Sections 2.2 and 3.1 are too similar. Please merge the two sections into one section.

[Reply] The contents of the two sections are in fact completely different. The only misleading aspect was the similar titles. In the revised manuscript, Section 2.1 (which was Section 2.2 in the original version) is now entitled "GEMS Cloud Algorithm Description," while Section 3.1 is now entitled "Satellite Data Used in This Study."

2) To explain the GEMS radiance characteristics, sampling and resolution information are wrong. The sampling is 0.2 nm and the resolution is 0.6 nm. Please correct it.

[Reply] We corrected to 0.6 nm.

3) Section 2.2 has to be moved before Section 2.1. Algorithm outputs are more appropriate after the algorithm description.

[Reply] The section is moved as suggested.

4) L139: For the radiance simulation, this study used 460-485 nm. However, the O₂-O₂ band at 477 nm significantly affect the spectral range longer than 485 nm. Why does this study use the spectral range with not wide enough?

[Reply] We have revised the manuscript in lines 120-122 as follows:

"Before the launch of GEMS, we designed the algorithm using 460-490 nm. However, we discovered that a bad-pixels exist over 485 nm in partial area (Lee et al., 2023) during the in-orbit test of GEMS. Therefore, the fitting window was shortened for stable cloud retrieval."

5) L144: This spectral range is significantly affected the NO₂ absorption. Why does this study not consider the NO₂ absorption?

[Reply] We decided the gases in cloud retrieval process based on fitting residual. In the fitting residual analysis, both of NO₂ and O₃ did not cause remarkable error, but only O₃ caused error in high cloud conditions. Therefore, we added the O₃ absorption effect.

We revised manuscript in lines 126-129 as follows:

“In addition, even though NO₂ absorption coefficients exist in the spectral range of the input reflectance, their effects are disregarded because the impact is negligible.”

In addition, we acknowledged the effects of NO₂ absorption on the GEMS cloud retrieval algorithm, so we attempted to account for NO₂ absorption via the adoption of QDOAS, etc. We also included the related discussion in lines 426-427 as follows:

“Also, QDOAS application enable to consider the NO₂ absorption. We anticipate the improvement of the GEMS cloud retrieval algorithm in the future through consider those remaining issues.”

6) L156: From Equation (3), this equation is not a full DOAS method. It is linearized absorption signal separation. The full DOAS method is additionally considered the non-linear correction. How about correcting the non-linear effect for the estimation of SCD?

[Reply] We tested the effect of adding a nonlinear term of the second and third order to Equation (3), but the results show no statistically significant difference when nonlinear terms are considered. The initial goal of the GEMS cloud was to produce results as stable as possible, so we aimed to reduce the uncertainty caused by inversion calculations using linear fitting. However, we conducted the fitting analysis using synthetic data, we agree that nonlinear fitting analysis is needed using operated GEMS L1C and IRR data. One approach for applying nonlinear fitting is to utilize QDOAS, as demonstrated by Danckaert et al. (2012). We plan to analyze the results of cloud calculations using nonlinear fitting in addition to the existing results in future research.

We included the related discussion in lines 423-426 as follows:

“Since the GEMS cloud is retrieved through the DOAS method using linear fitting, it is necessary to compare the results with nonlinear fitting. One approach for applying nonlinear fitting is to utilize QDOAS, as demonstrated by Danckaert et al. (2012). We plan to analyze the results of cloud retrievals using the nonlinear fitting method in existing algorithm in future research.”

7) L161: For readability, please add the flowchart of the whole cloud retrieval algorithm.

[Reply] We added the flowchart of GEMS cloud retrieval algorithm in Fig. 1.

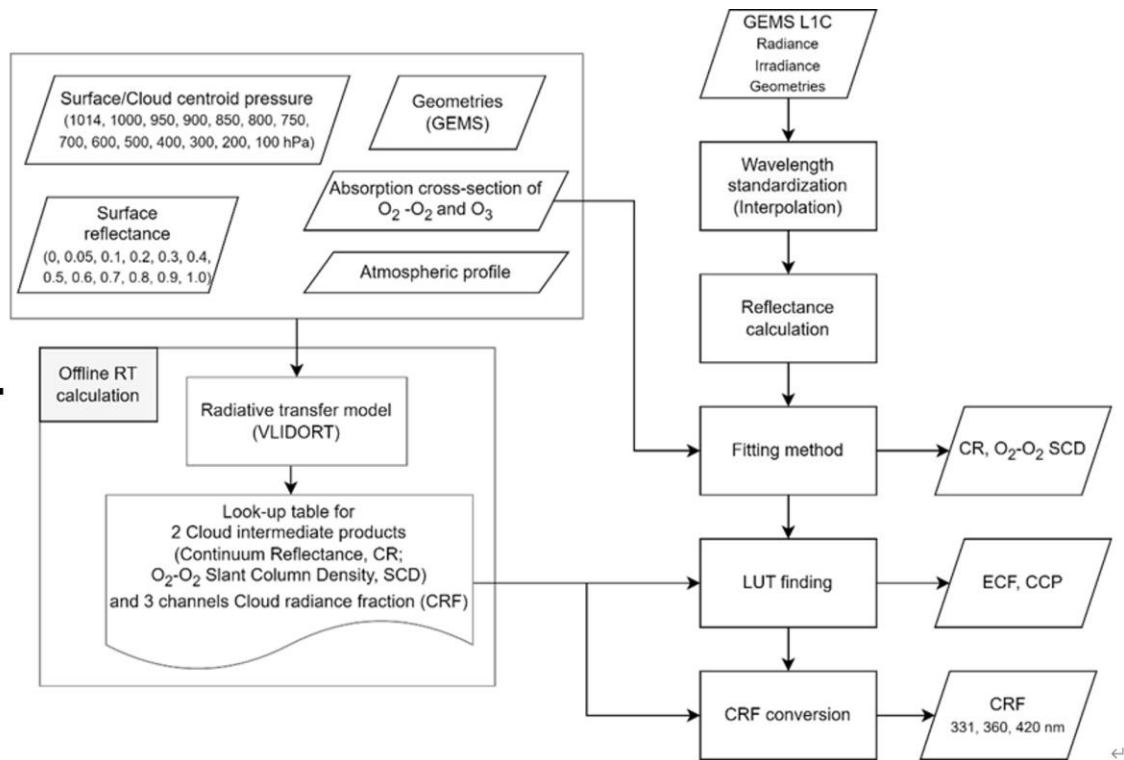


Figure 1: GEMS cloud retrieval algorithm flowchart.

565

8) L162-L166: It is too simple to explain. Please add the details of the explanation what is the main difference between the two different platforms.

[Reply] We revised manuscript in lines 139-143 as follows:

“As already noted, the observational geometry differs from the LEO orbit because GEMS is in GEO. The VZA is constant at each location, but it varies significantly across the observation area. In contrast, SZA varies significantly across the complete observation area from sunrise to sunset. This change in SZA influences not only the calculation of reflectance, the optical path, etc., but also the variation in surface reflectance. Therefore, we simulated the RTM considering the various conditions of surface reflectance.”

9) Section 3.1 (before revision): This section needs to separate the sections according to the platforms.

[Reply] We separated the sections for each platform.

10) L248: This manuscript is only focused on the Korean Peninsula, not the GEMS domain. Do you have some reasons? Please clarify this issue.

[Reply] We considered the entire swath (from 03 to 06 UTC) within the GEMS FOV. We revised the manuscript in lines 248-251 as follows:

“TROPOMI and CALIOP passed the GEMS FOV between 03 and 06 UTC, we use the entire swath to validate the GEMS products, but since most cases occurred close to the Korean Peninsula, we primarily used around the 04 UTC observation for validation. GEMS observes the

Korean Peninsula at ~ 45 minute past every hour during daytime, therefore, data observed at 04:45 UTC was selected as the validation data.”

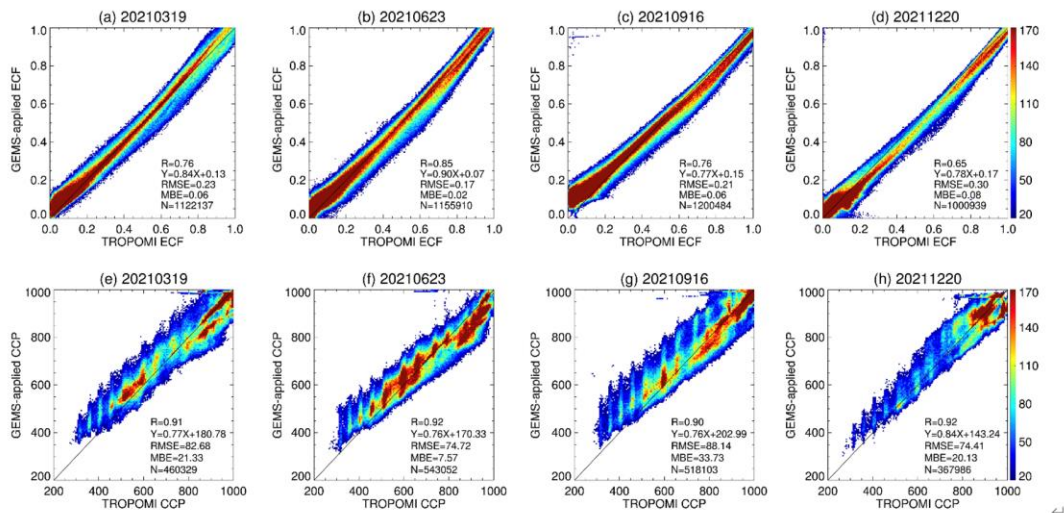
11) Section 4: This manuscript is focused on the cloud algorithm for GEMS. However, Section 4 shows the results using OMI and TROPOMI. Please clarify the purpose of these results.

[Reply] Using the same input data is valuable for understanding algorithm differences without sensor error. We revised the manuscript in lines 268-270 as follows:

“Using the same input data is valuable for understanding algorithm differences. Since OMI is the foundation of the GEMS cloud retrieval algorithm, the GEMS cloud algorithm would produce a product that is highly correlated with the OMI cloud product.”

12) Figure 3: This figure is one of the key results in this manuscript. However, as shown in this figure, an arbitral stripe pattern exists. I think that this is a problem during the inversion process for the best solution estimation from LUT. This problem is a critical issue for the operational algorithm. Please check and find the reason and need to fix this critical issue.

[Reply] The striped pattern caused by look-up table interpolation processes was eliminated after the systematic error was resolved as follows.



580 Figure 4: This figure is similar to Figure 1 but for TROPOMI. To verify the performance and seasonal dependency of GEMS cloud retrieval algorithm, cloud retrieval results were compared with those of TROPOMI for random days in March, May, September, and December 2021. The top panel shows the results for ECF and the bottom panel shows the results for CCP in a density scatterplot. As definitions of cloud pressure differ between GEMS and TROPOMI, the density scatterplot was generated using the mean value of CTP and CBP (mean cloud pressure, mCP) from TROPOMI. The x-axis shows the TROPOMI values, and the y-axis shows the GEMS cloud retrieval results. The solid line represents the 1:1 line, and the correlation coefficient and regression equation are also displayed.⁴

585

13) Section 5: Although the manuscript shows several cases, the long-term comparison result is also required to see the stability of the algorithm's accuracy. In addition, this study only showed the 0430 UTC result. It is only allowed to the intercomparison. To see the diurnal variability of cloud retrieval results, this study also has to show the continuous diurnal results. In addition, some performance results (statistical validation results) are essential.

[Reply] The reason why we used only the 04:45 UTC data is TROPOMI passed over the Korean Peninsula at 04 UTC. We utilized approximately over 300,000 pixels each month. The validation

results for TROPOMI cloud products over the six-month period in 2023 are presented in the table below.

Table 1. Monthly validation results between GEMS and TROPOMI cloud product

Mon	ECF		CCP	
Jan	R = 0.74	Y = 0.77x+0.18	R = 0.88	Y = 0.54x+356.14
Feb	R = 0.78	Y = 0.81x+0.16	R = 0.88	Y = 0.54x+354.75
Mar	R = 0.77	Y = 0.79x+0.14	R = 0.82	Y = 0.48x+392.42
Apr	R = 0.78	Y = 0.79x+0.14	R = 0.83	Y = 0.51x+361.75
May	R = 0.78	Y = 0.79x+0.13	R = 0.81	Y = 0.49x+371.01
Jun	R = 0.75	Y = 0.76x+0.15	R = 0.72	Y = 0.43x+398.01

We have performed the error by temporal variations and added the paragraph in lines 356-361 as follows:

“Due to the GEO orbit in which the GEMS is located, there are temporal variations in SZA as well as several input variables. Using the time-specific observation data of the aerosol high concentration case, we tested the error when input variables over time were not taken into account and were inaccurately entered as fixed values. The results indicate that the largest error in cloud calculation occurs when the SZA change is not adequately accounted for. The surface reflection, which causes an approximately 1% change in time, also caused a significant error, and the error characteristics in the ground-ocean were found to be substantially different. The error caused by a minor change in ground pressure over time was insignificant.”

We have confirmed the movement of typhoon over time and added the paragraph in lines 381-384 as follows:

“Analysis of cloud production characteristics over time is required despite the fact that verification with other satellites is not feasible for all GEMS observation times except when some paths overlap. In the case of typhoons in which clouds are transparent and move rapidly over time, the observation of cloud movement over time was therefore qualitatively analyzed. It was discovered that GEMS cloud algorithm accurately identified the movement of typhoons over time.”

Minor Comment

1) L160: angle geometry → observation geometry

[Reply] We changed all expressions ‘angle geometry’ to ‘observation geometry’.

2) L168: Please add the reference for the VLIDORT NGST version.

[Reply] We added the reference for the VLIDORT NGST version in lines 146 as follows:

“while GEMS used the VLIDORT NGST version (Spurr et al., 2006).”

3) L199: Please add the reference, and recheck the spatial resolution of TROPOMI in L204.

[Reply] We added references and revised the spatial resolution as $3.5 \times 5.5 \text{ km}^2$ in lines 206-207 as follows:

“Launched in 2017, TROPOMI is in SSO (as is OMI) and has a spatial resolution of $3.5 \times 5.5 \text{ km}$, which is similar to that of GEMS (Latsch et al., 2022),”

4) L241: To the clarify the difference, please list-up the difference of definition for cloud parameters.

[Reply] We added the table 2 to show the difference of definition for cloud parameters.

5) L285-286: This sentence is not clear. Please rephrase it.

[Reply] We rephrased the sentence in lines 290 as follows:

“Figure 3 displays the outcome of the GEMS cloud process, derived from OMI observations conducted on March 25th, 2007.”