

Supplement

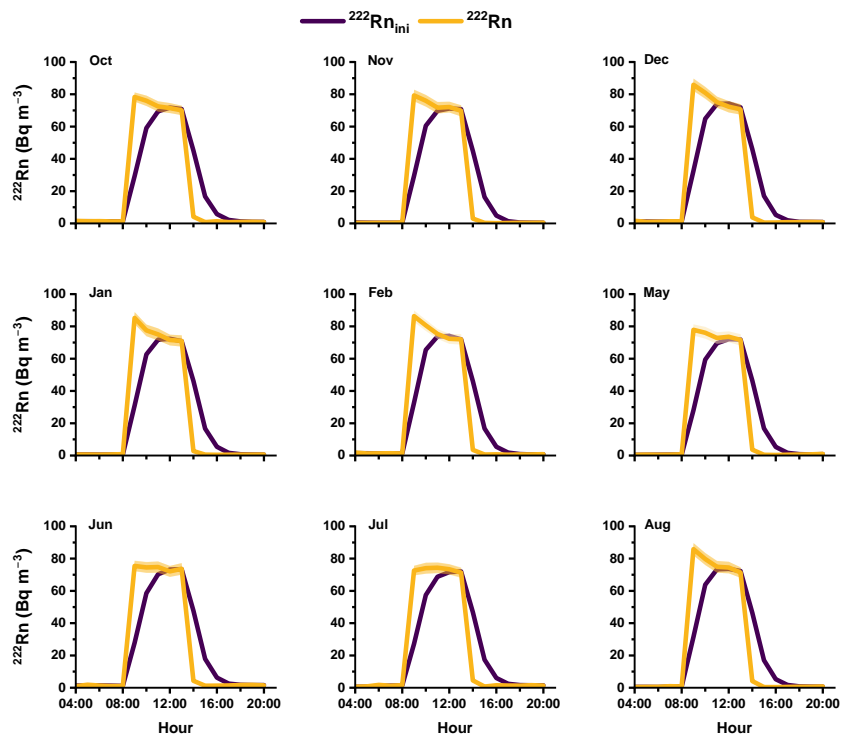


Figure S1: Comparison of initial and best estimated radon activity concentrations (with the 16th–84th percentile range shaded) during calibration events at HFD.

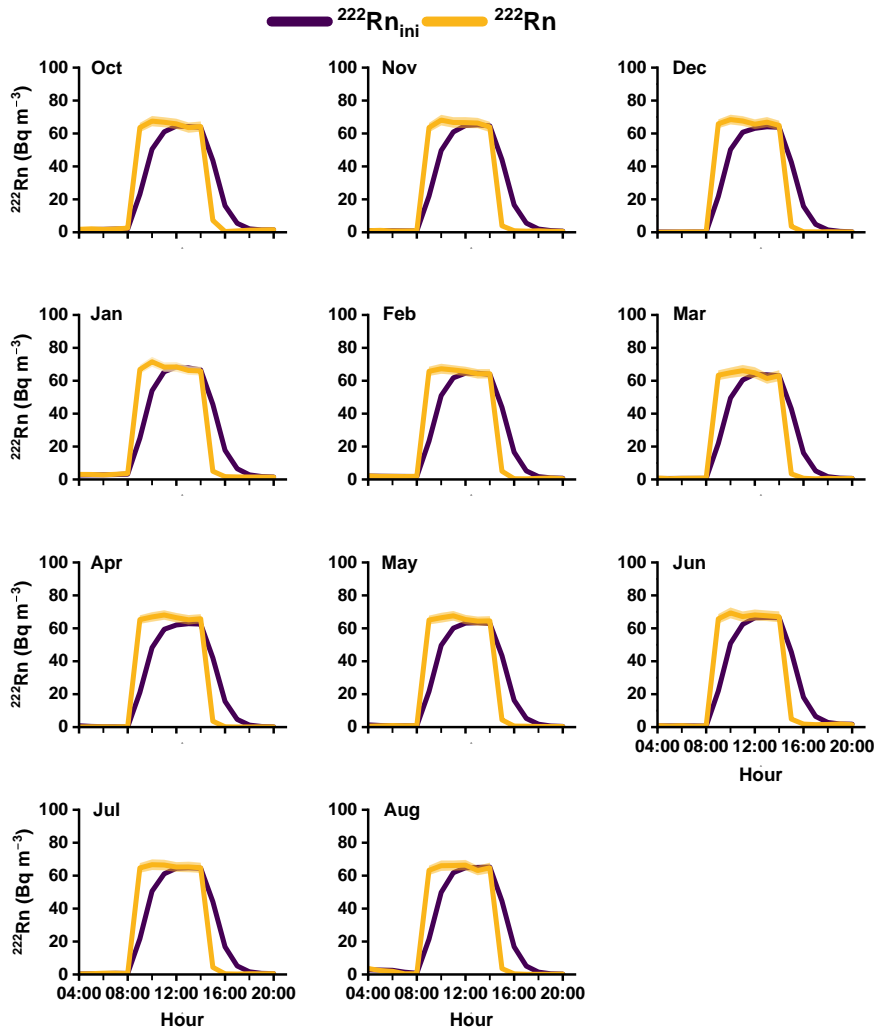


Figure S2: Comparison of initial and best estimated radon activity concentrations (with the 16th–84th percentile range shaded) during calibration events at WAO.

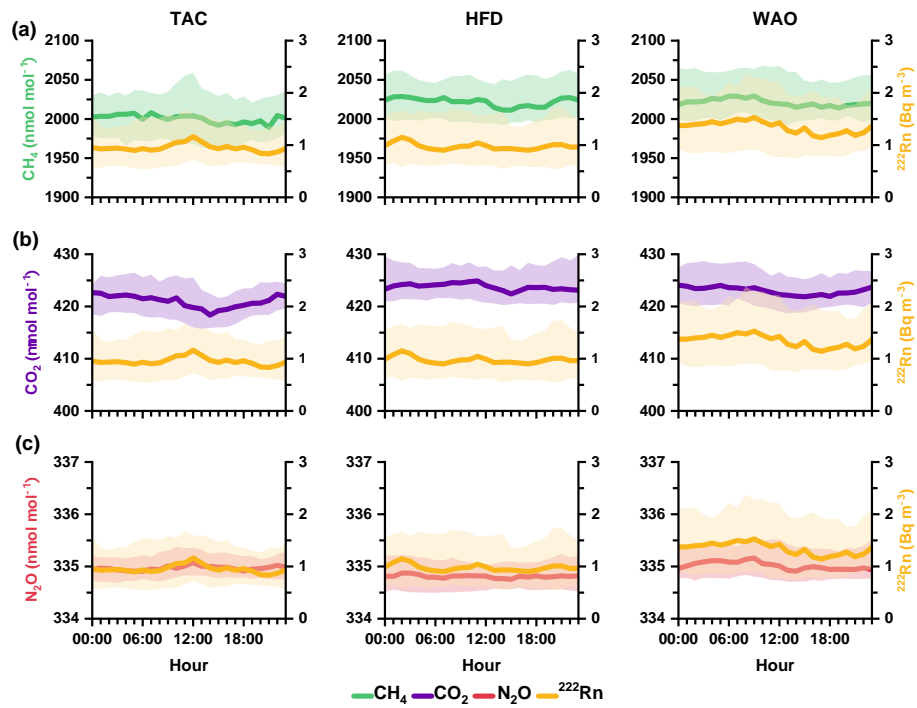


Figure S3: Winter diurnal composites of best estimated radon activity concentration and GHG amount fractions at TAC, HFD and WAO shown in panels: a) radon and CH_4 , b) radon and CO_2 , and c) radon and N_2O . Composites are based on hourly median values spanning December to February. Shaded areas indicate the 25th to 75th percentile to visualize variability of gases.

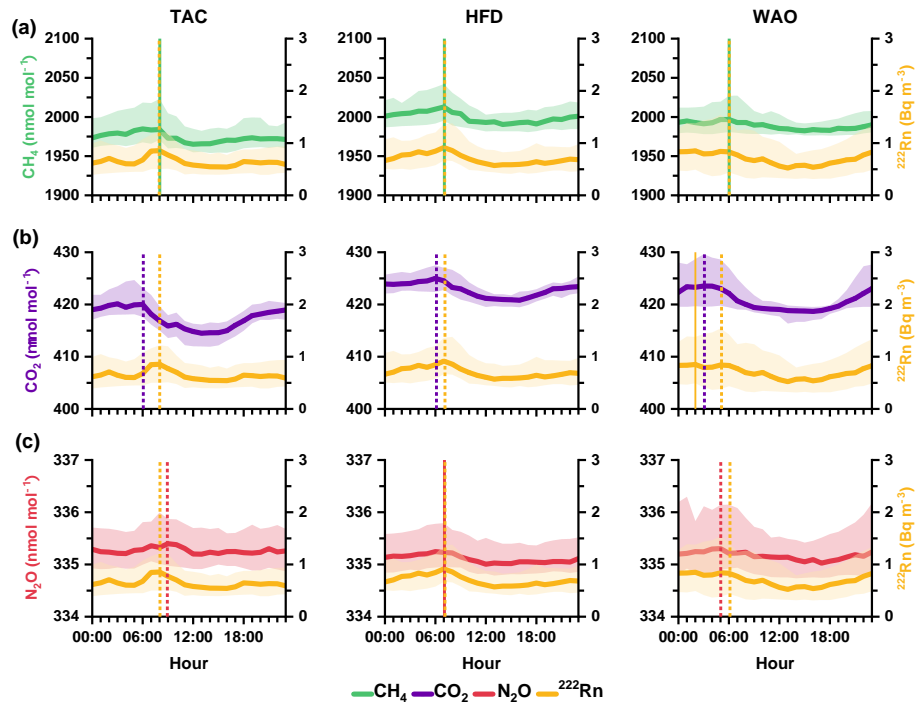


Figure S4: Spring diurnal composites of best estimated radon activity concentration and GHG amount fractions at TAC, HFD and WAO shown in panels: a) radon and CH_4 , b) radon and CO_2 , and c) radon and N_2O . Composites are based on hourly median values spanning March to May. Shaded areas indicate the 25th to 75th percentile to visualize variability of gases.

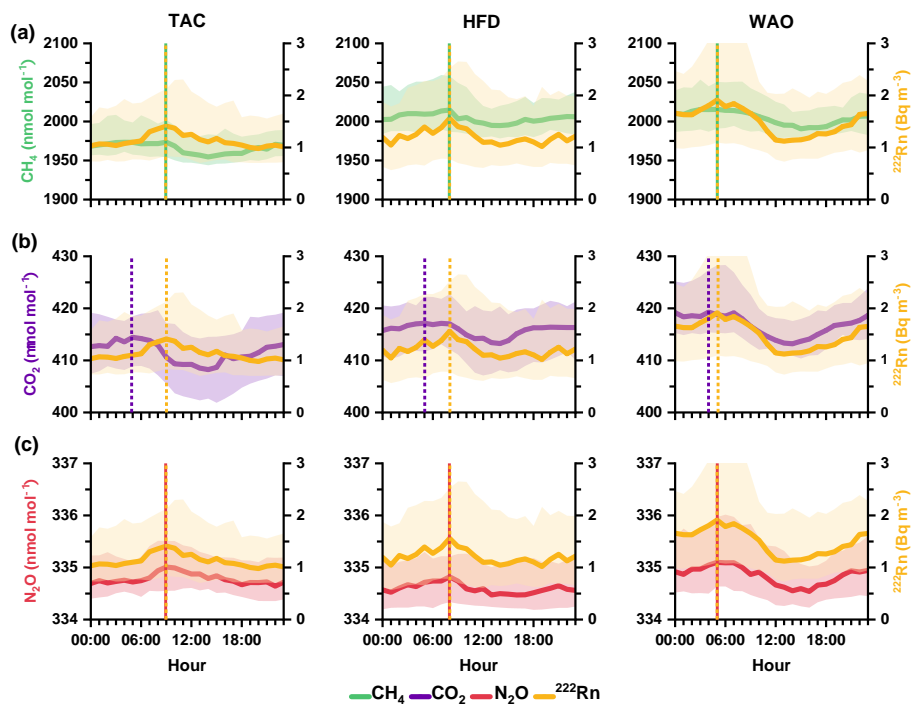


Figure S5: Autumn diurnal composites of best estimated radon activity concentration and GHG amount fractions at TAC, HFD and WAO shown in panels: a) radon and CH_4 , b) radon and CO_2 , and c) radon and N_2O . Composites are based on hourly median values spanning September to November. Shaded areas indicate the 25th to 75th percentile to visualize variability of gases.

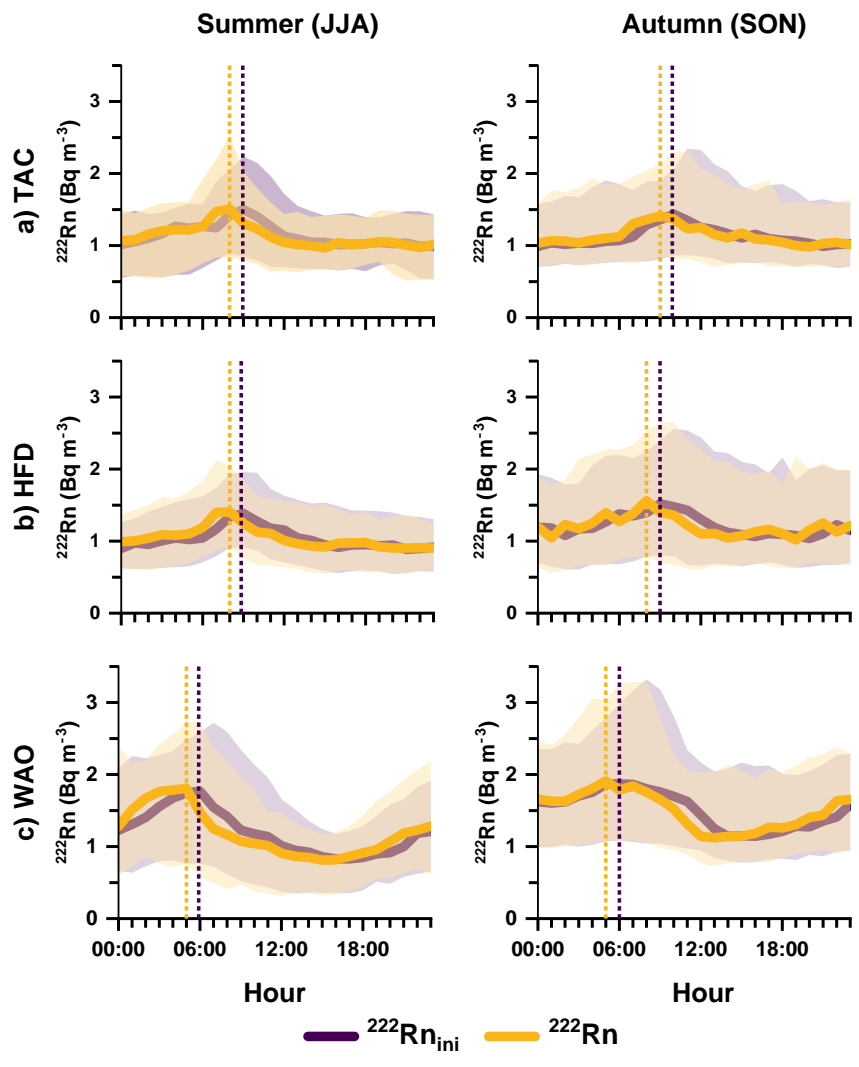


Figure S6: Diurnal composites of initial and best estimated radon activity concentration for a) TAC, b) HFD, and c) WAO, presented for summer (left panel) and autumn (right panel). Composites are based on hourly median values. Shaded areas indicate the 25th to 75th percentile to visualize variability of radon.

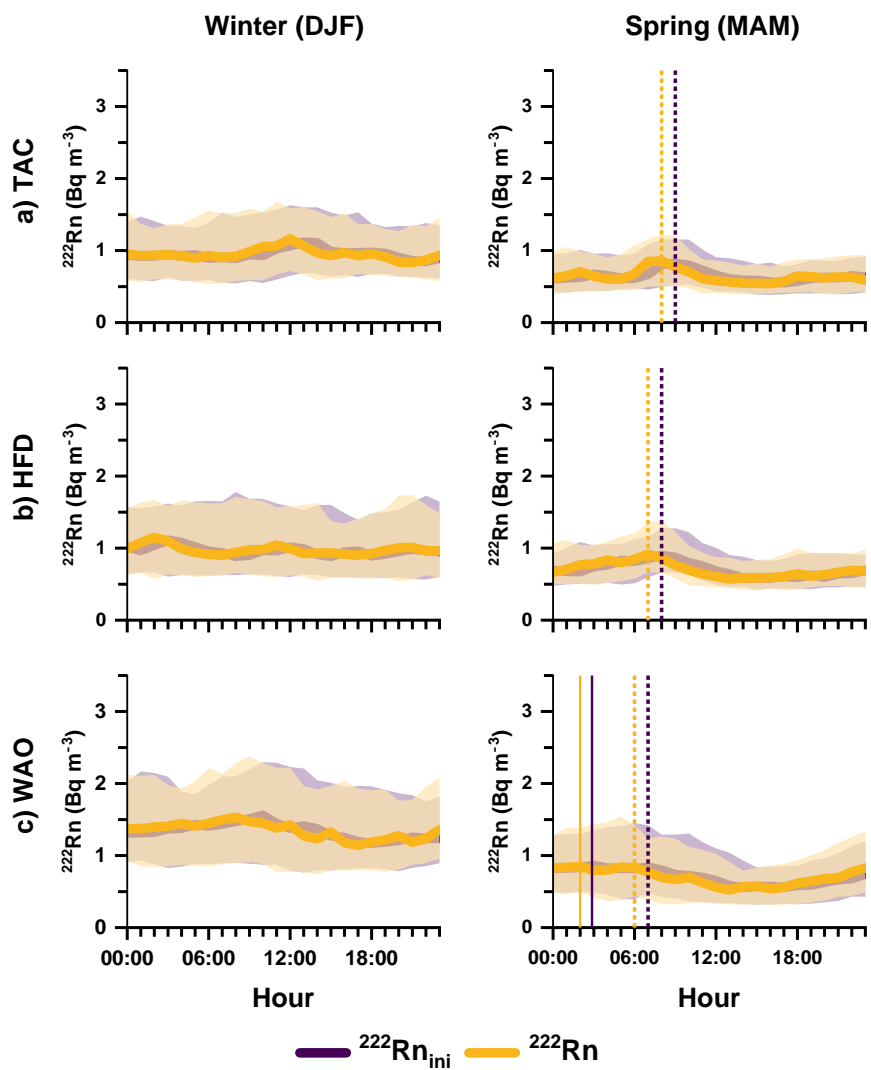


Figure S7: Diurnal composites of initial and best estimated radon activity concentration for a) TAC, b) HFD, and c) WAO, presented for winter (left panel) and spring (right panel). Composites are based on hourly median values. Shaded areas indicate the 25th to 75th percentile to visualize variability of radon.