

Can remote sensing combustion phase improve estimates of landscape fire smoke emission rate and composition?

Farrer Owsley-Brown^{1,2,3}, Martin J. Wooster^{1,2,3}, Mark J. Grosvenor^{1,2,3}, Yanan Liu^{1,2}

¹Department of Geography, King's College London, Bush House, 30 Aldwych, London, WC2B 4BG

5 ²Leverhulme Centre for Wildfires, Environment and Society, King's College London, London, WC2R 2LS

³NERC National Centre for Earth Observation, King's College London, London, WC2R 2LS

Correspondence to: Farrer Owsley-Brown (farrer.owsley-brown@kcl.ac.uk)

Abstract. The proportion of flaming and smoldering activity occurring in landscape fires varies with fuel type and fuel characteristics, which themselves are influenced by ecology, meteorology, time since the last fire etc. The proportion of these combustion phases greatly influences the rate of fuel consumption and smoke emission, along with the chemical composition of the smoke, which influences the effects on the atmosphere. Earth Observation (EO) has long been suggested as a way to remotely map combustion phase, and here we provide the first known attempt at evaluating whether such approaches can lead to the desired improvements in smoke emissions estimation. We use intensively measured laboratory burns to evaluate two EO approaches hypothesized to enable remote determination of combustion phase and concurrent measurements of the smoke to determine how well each is able to improve estimation of smoke emission rates, smoke composition and the overall rate of fuel consumption. The first approach aims to estimate the sub-pixel 'effective fire temperature', which has been suggested to differ between flaming and smoldering combustion, and the second detects the potassium emission line (K-line) believed only to be present during flaming combustion. We find while the fire effective temperature approach can be suited to estimating Fire Radiative Power (FRP), it does not significantly improve on current approaches to estimate smoke chemical makeup and smoke emission. The K-line approach does however provide these improvements when combined with the FRP data, improving the accuracy of the estimated CO₂ emission rate by an average of 17±4% and 42±15%, respectively, depending on whether the K-line detection is used to simply classify the presence of flaming combustion, or whether its magnitude is also used to estimate its relative proportion. Estimates of CO and CH₄ emission rates were improved to a lesser extent than that of CO₂, but the accuracy of the smoke modified combustion efficiency (MCE) estimates increased by 30±15% and 46±10%, respectively. MCE is correlated to the emissions factors

Commented [FO1]: (RC2) #line 21 – define FRP acronym

(EFs) of many smoke constituents, so remotely deriving MCE provides a way to tailor these during smoke emissions calculations. Whilst we derived and tested our approaches on laboratory burns, we demonstrate their wider efficacy using airborne EO data of a boreal forest wildfire where we find that combined use of K-line and FRP data significantly change estimated smoke MCE and CO₂ and CO emission rates compared to the standard approach. Our findings suggest that satellite EO methods that jointly provide K-Line and FRP data could enable marked improvements in the mapping of landscape fire combustion phase, fuel consumption and smoke emissions rate and composition.

1. Introduction

Satellite Earth Observation (EO) is the only approach able to provide global, systematic, and regularly repeated estimates of landscape fire trace gas and aerosol emissions (Chuvieco et al., 2019; Wooster et al., 2021). ‘Bottom-up’ EO-based emissions estimation approaches rely on calculating the amount of biomass burned, based on burned area (BA) or fire radiative energy (FRE) measures (Giglio et al., 2013; Kaiser et al., 2012; Wiedinmyer et al., 2011), which is then multiplied by the emission factor (EF_x) of the chemical species (X) of interest. EF_x represents the mass of that species that is emitted per unit of fuel burned (g kg⁻¹; Andreae and Merlet, 2001). More recently developed EO-based approaches now link EO-derived fire radiative power (FRP) measures directly to emission rates of a trace gas or particulate species via an emission coefficient C_e^X (kg MJ⁻¹; Ichoku and Kaufman, 2005; Mota and Wooster, 2018; Nguyen et al., 2023; Nguyen and Wooster, 2020). However, no EO approach currently takes into account combustion phase and the proportion of flaming and smoldering activity, despite this being known to dramatically influence fire and smoke characteristics (e.g., Freeborn et al., 2008; Urbanski, 2014; Zhang et al., 2015).

The proportion of flaming and smoldering combustion in a landscape fire depends on fuel type and fuel condition – for example being influenced by fuel load, fuel density and fuel moisture content for example (e.g., Burling et al., 2010; Garg et al., 2024; Urbanski, 2013). It is well known that for most chemical species released by landscape burning, the EF_x (and the C_e^X) change markedly between the flaming and smoldering combustion phase (e.g., Reid et al., 2005; Zhang et al., 2015). Therefore, since the proportion of flaming and smoldering combustion varies even between fires burning in the same fuel

type, smoke emissions characteristics can also vary widely – which then has an impact on the fire’s effects on atmospheric
50 composition (e.g., Mebust and Cohen, 2013; Zheng et al., 2018).

Biome-specific databases of EF_x and/or C_e^x do not generally report separate values for flaming and smoldering combustion,
but rather overall ‘fire-averaged’ values based on laboratory and/or field measurements assumed to include a ‘typical’
amount of flaming and smoldering combustion for that fuel type (see Akagi et al., 2011; Andreae, 2019; Andreae and
Merlet, 2001). Remote sensing measures of FRP reflect an instantaneous observation, possibly at a time when the amount of
55 flaming and smoldering combustion may be very atypical of the ‘average’. Furthermore, even ‘fire-averaged’ emission
factors and coefficients likely vary between fires in the same fuel. For these reasons there is increasing interest in providing
more dynamic emission factors and emissions coefficients, initially at least to cope with their presumed seasonal variations
(Vernooij et al., 2023, 2022).

There have long been suggestions that remote sensing may be able to provide ways to specify more tailored emissions
60 factors or coefficients (e.g. Andreae and Merlet, 2001; Freeborn et al., 2008; Kaufman et al., 1998). The most common
approach suggested uses estimates of sub-pixel fire effective temperature, for example derived via the Dozier (1981)
approach or similar multispectral analysis methods that can be used with ground or airborne data (e.g. Dennison et al., 2006)
but also with spaceborne data to analyze fires covering only a very small fraction of the pixel area (e.g., Giglio and Kendall,
2001). An alternative approach would be to remotely identify a phenomena characteristic of only a single combustion phase,
65 and most commonly suggested is the potassium line (K-line) radiative emission associated only with flaming activity (Amici
et al., 2011; Magidimisha and Griffith, 2017; Vodacek et al., 2002). The current work aims to test these remote sensing
approaches to determine whether they really can improve smoke emissions rate and smoke composition estimation, in this
case, of the three most dominant trace gases (CO_2 , CO and CH_4). We use a series of intensively instrumented combustion
chamber burns for this, and also demonstrate the best approaches on real landscape fires using airborne EO data – providing
70 a demonstration that is of intermediate scale to satellite EO.

2. Background

Though the burning of biomass involves multiple different combustion phases, almost all the smoke is produced in the flaming and smoldering phases (Bertschi et al., 2003; Yokelson et al., 1997). The flaming phase generally involves higher temperatures, and the resulting oxidation of fuel carbon is typically far more complete and leads to a higher CO₂ emission

75 factor (Zhang et al., 2015). EFs of species such as NO_x, SO₂ and black carbon (BC) are also elevated in the flaming phase (Andreae and Merlet, 2001; Reid et al., 2005). Smoldering combustion commonly refers to a combination of pyrolysis (thermal decomposition of the fuel) and glowing combustion (of char), mostly involving lower temperatures and more incomplete oxidation of the fuel carbon compared to flaming. CO₂ EFs are lower, but those of species such as CO, CH₄, organic carbon (OC), and volatile organic compounds (VOCs) are higher (e.g. Zhang et al., 2015; Andreae, 2019; Bertschi et al., 2003; Reid et al., 2005; Yokelson et al., 1997, 1996). However, fuel combustion rate is also important to consider in emissions rate calculations, and is far higher per unit area for flaming rather than smoldering combustion (e.g., Lacaux et al., 1996; Wooster et al., 2011) . Furthermore, despite EF_{CO₂} being typically 5-15% lower for smoldering than flaming combustion, smoldering fires still release the majority of their carbon as CO₂ as the emissions factor of CO₂ is still higher than for any other compound (e.g., Reisen et al., 2018; Zhang et al., 2015). However, the EF of ‘preferentially smoldering’ 85 compounds such as CO, CH₄, organic carbon (OC), and VOCs are typically many times higher during smoldering than flaming phase combustion, so along with the fuel consumption rate the amount of smoldering activity plays a very significant influence in their emission rate.

Whilst landscape fires often show periods of only smoldering combustion, periods of ‘flaming-dominated’ activity are, typically, relatively short. Far more common are stages with a mixed contribution, where some smoldering is happening 90 behind the flaming front (e.g., Bertschi et al., 2003; Burling et al., 2011; Rabelo et al., 2004; Urbanski, 2014; Yokelson et al., 1997). Since combustion rate per unit area is generally far higher in the flaming-dominated phase than the smoldering-dominated phase, the total production of even ‘preferentially smoldering’ species can often be higher during the flaming period rather than during pure smoldering, depending on the area affected by each and their relative durations. This complexity has led to metrics like the modified combustion efficiency (MCE), which aims to quantify the balance between 95 flaming and smoldering combustion in the smoke production process, defined as:

Commented [FO2]: (RC2) #line 71 – '(Zhang et al., 2015)'

Commented [FO3]: (RC1) Line 95: Suggest changing "...the smoke production process:" to "...the smoke production process defined as:"

$$MCE = \frac{\Delta CO_2}{\Delta CO_2 + \Delta CO} \quad (1)$$

where ΔX indicates the excess concentration of CO_2 or CO (commonly measured in ppmv).

Purely flaming combustion results in an MCE close to 1.0 due to minimal CO production, whilst purely smoldering combustion can yield smoke with an MCE as low as 0.65 (depending on fuel type; Akagi et al., 2011; Andreae, 2019).

Smoke MCE has been shown to be negatively correlated with the EFs of many preferentially smoldering species (Bertschi et al., 2003; McMeeking et al., 2009; Urbanski, 2013; Yokelson et al., 1996), and understanding the MCE of the fire can therefore enable more precision to be placed on the resulting fire emissions. However, collecting MCE data on landscape fires is challenging even using *in situ* aircraft sampling due to atmospheric mixing (Yokelson et al., 2013), and whilst satellite EO has shown an ability to probe smoke emissions ratios (e.g., Coheur et al., 2009; Ross et al., 2013) it has not yet been possible to remotely sense smoke MCE. Currently, therefore, remote sensing approaches potentially able to determine the amounts of flaming and smoldering combustion ongoing in a fire are based either on retrieving the fire's effective temperature (e.g., Zhukov et al., 2006) or detection of the flaming-phase K-line signature (e.g., Amici et al., 2011).

Remotely sensed fire effective temperature estimation was first proposed by Dozier (1981). Observations in two different wavebands are used to retrieve a fire's subpixel effective temperature (T_r) and proportional area (p), with the fire assumed to be thermally homogeneous and superimposed on a thermally homogeneous background with temperature (T_b) and proportional area ($1-p$). Blackbody behavior is generally assumed, and estimation of T_r and p is conducted via solution of:

$$L_1 = \tau_1 p B(\lambda_1, T_r) + (1-p)L_{b,1} + L_{atm,1} \quad (2)$$

$$L_2 = \tau_2 p B(\lambda_2, T_r) + (1-p)L_{b,2} + L_{atm,2} \quad (3)$$

where L_1 and L_2 are spectral radiances ($Wm^{-2}sr^{-1}m^{-1}$) in wavebands λ_1 and λ_2 , τ_1 and τ_2 are the atmospheric transmittances in those wavebands, and $L_{atm,1}$ and $L_{atm,2}$ are the atmospherically emitted radiances measured by the sensor in those wavebands. $L_{b,1}$ and $L_{b,2}$ are the radiance contributions from the non-burning uniform background, whose temperature is generally estimated from neighboring pixels. The spectral emission at wavelength λ and retrieved temperature T_r is given by Planck's Radiation Law:

Commented [FOB4]: (RC1) Eq. 2 and 3: Please make mathematical notation here and in text consistent, e.g. within 2 and 3 the variable p is sometimes italicized and sometimes not

Formatted: Font: Italic

Formatted: Font: Italic

Formatted: Font: Italic

Commented [FO6]: (RC1) Eq. 2 and 3: As the effective temperature temperature is define, (AC) Comment appears to be incomplete. However, we saw that while T_r refers to retrieved effective temperature, this was not c from the text and have clarified this in the revised manuscript, wh this comment may be referring to.

Formatted: Font: Italic

$$B(\lambda, T_f) = \frac{2hc^2}{\lambda^5} \frac{1}{e^{\frac{hc}{\lambda k_B T_f}} - 1} \quad (4)$$

where h is Planck's constant ($6.62607004 \times 10^{-34} \text{ kgm}^2\text{s}^{-1}$), k_B is Boltzmann's constant ($1.38064852 \times 10^{-23} \text{ kgm}^2\text{s}^{-2}\text{K}^{-1}$) and c the velocity of light in a vacuum ($299792458 \text{ ms}^{-1}$). Note that "effective temperature" refers to an estimate of the

radiant temperature of the fire, rather than the kinetic temperature one might measure with a thermometer. This assumes that

120 the fire is a grey body (Johnston et al., 2014) but makes no assumptions with regards to the actual emissivity value.

Dennison et al. (2006), Dennison and Matheson (2011); Matheson and Dennison (2012), Zhukov et al. (2006) provide examples of mapping sub-pixel fire effective temperature, which can be expanded to estimate increased thermal component fits if more than two wavebands are available, such as in hyperspectral data (Dennison et al., 2006; Dennison and Matheson, 2011; Giglio and Justice, 2003; Giglio and Kendall, 2001; Waigl et al., 2019). This could potentially determine separate
125 flaming and smoldering contributions. However, no studies have yet linked such retrievals to an ability to better estimate smoke emission characteristics (Wooster et al., 2021), despite that being a key aim for such data.

The alternative K-line approach is based on the detection of an emission doublet in the near infrared (766.5 nm and 769.9 nm), which is caused by thermally excited potassium atoms within the burning fuel (Vodacek et al., 2002; Amici et al., 2011; Dennison and Roberts, 2009; Magidimisha et al., 2023; Magidimisha and Griffith, 2017). Only flaming phase activity is hot
130 enough to produce K-line emission and Amici et al. (2011) thus far provide its only detection from space – defining the 'Advanced K Band Difference' (AKBD) metric to quantify its strength:

$$\text{AKBD} = \text{Max}|\text{BandK}_i| - \text{Bkg} \quad (5)$$

where $\text{Max}|\text{BandK}_i|$ is the maximum spectral radiance recorded in the 764 nm – 772 nm range (the region that encompasses the NIR K-line doublet) and Bkg is that recorded just outside the K-emission region, for example 779nm. The K-line signature can be seen superimposed on the background Planckian signal in data from our experiment shown in Fig. 2a.

Commented [FO5]: (RC1) Eqs. 4 and 17: Here also please italicise consistently for variables and constants - see comment above in reference to Eqs. 2 and 3.

(AC) Variables and physical constants have been italicised.

Commented [FOB7]: (RC1) Lines 105-108: A clarification what "effective temperature" (T_f) actually means is warranted here since emissivity does not appear in Eqs. (2) and (3). This implies that T_f is a radiant temperature rather than actual temperature as measured with a thermometer, but the intended meaning is not clear from the text.

Commented [FOB8R7]: Note that added citation here was already in the references section as it is cited later in the manuscript.

135 **3. Laboratory experiment method**

3.1 Experiment setup

Experiments were conducted at King's College London's Wildfire Testing Chamber, located at Rothamsted Research, Harpenden (UK). The physical arrangement and instruments are detailed in Fig. 1 and Table 1. The remote sensing instruments were positioned to view the fuel-bed at nadir (location B in Fig. 1) through appropriately transparent windows

140 (also listed in Table 1) with high heat resistance. Pre-experiment calibrations were undertaken to allow the non-unitary transmissivity of the windows to be taken account of during data analysis.

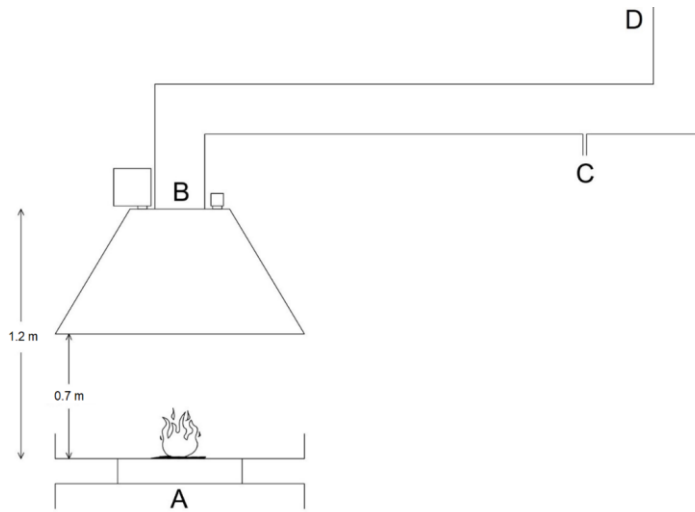


Figure 1. Experimental setup for examining fire and smoke characteristics: (A) Fuel-bed; (B) Spectrometers and cameras viewing the fuel-bed and nadir through holes in the extraction flue; (C) Gas analyzers, (D) Air flow rate

145 **sensor.**

Table 1. Instruments used and their specifications, as well as the window compositions that protected the spectrometers and cameras viewing through the holes shown in Fig. 1.

Location	Instrument	Window	Specifications
A	Digital Scales	NA	0.005 kg readability
B	VIS-SWIR spectrometer - SVC HR-1024i	Sapphire (AL ₂ O ₃)	Spectral Range: 350 nm – 2500 nm FWHM: 3.5 nm (700 nm), 9.5 nm (1500 nm), 6.5 nm (2100 nm) Bandwidth: 1.5nm (350 nm – 1000 nm), 3.8 nm (1000 nm – 1890 nm), 2.5 nm (1890 nm – 2500 nm) FOV: 14° foreoptic lens Calibration Accuracy: ±5% (400 nm), ±4% (700 nm), ±7% (2000 nm) Measurement frequency: 0.14 – 0.25 Hz
B	Thermal camera - Optris PI 400	Zinc Selenide (ZnSe)	Spectral Range: 7.5 μm – 13 μm Optical Resolution: 382 x 288 pixels Framerate: 27 Hz Temperature Range: 150 °C – 900 °C FOV: 62° x 49° f = 8 mm Measurement frequency: 1 Hz
B	UV-NIR spectrometer - Ocean Insight OCEAN-HDX-XR	Fused silica (SiO ₂)	Spectral Range: 200 nm – 1100 nm FWHM: 1.1 nm FOV: 30° fiber-optic guide Measurement frequency: 1 Hz
B	RGB camera - Apeman A79	Fused silica (SiO ₂)	Resolution: 20 MP Framerate: 30 fps FOV: 170°

C	CO ₂ , CO and CH ₄ analyzer - Los Gatos Research Ultraportable Emissions Analyzer	NA	CO ₂ : 0 – 3000 ppm CO: 0 – 1000 ppm CH ₄ : 0 – 100 ppm H ₂ O: 0 – 99% relative humidity Measurement frequency: 1 Hz
C	CO ₂ and CO analyzer - GasLab CM-1000	NA	CO ₂ : 0 – 10000 ppm CO: 0 – 5000 ppm Measurement frequency: 0.5 Hz
D	Air pressure differential analyzer - Testo 440	NA	Pressure differential measuring range: -150 hPa to 150 hPa Accuracy: ±0.2 hPa Resolution: 0.01 hPa Measurement frequency: 1 Hz

3.2 Fuel

150 Three types of fuel were burned during these experiments: oak kindling, pine forest litter, and soybean crop residue. Oak
kindling was selected for its relative uniformity, though the thickness and dryness of the individual pieces was not identical
and led to some intra-fire variability in the amount of flaming and smoldering activity. The pine forest litter was a mixture of
needles, cones and small branches collected from the floor of a UK forest containing mainly Corsican, Maritime, and Scots
pine. This fuel mix was dried indoors for a month prior to the burns and the samples burned were selected to maintain the
155 proportions of needles, cones, and branches found on the forest floor. The soybean residues were sourced from China as an
example of an agricultural waste product commonly burned in open fields. All fuels were arranged to fit within a 29 cm
diameter circle to fit within the measurement area of all remote sensing instruments deployed.

Commented [FO9]: (RC1) Line 147: Suggest using Oxford comma for clarity: "oak kindling, pine forest litter, and soybean crop residue."

3.3 Fire measurements

3.3.1 Optical and thermal imagery

160 A standard RGB camera recorded video imagery of each fire for context, helping gauge how amounts of flaming and smoldering combustion changed over each fire's duration. A calibrated longwave infrared (LWIR) camera (Optris PI400) recorded infrared brightness temperature imagery at 1 Hz, with the 3.3 mm pixel size allowing for an assumption of pixel thermal homogeneity. A 1 Hz FRP record of the fire could then be derived using the Stefan-Boltzmann law with data from each image:

$$FRP = \sum_i \sigma a T_i^4 \quad (6)$$

165 where σ is the Stefan-Boltzmann constant ($5.670374 \times 10^{-8} \text{ W m}^{-2} \text{ K}^{-4}$), a is the pixel area ($1.109 \times 10^{-5} \text{ m}^2$), and T_i is the pixel brightness temperature (K). This sum was over the i pixels within each image that had $T \geq 600 \text{ K}$, which excluded cooling non-combusting pixels (e.g., Freeborn et al., 2008; Wooster et al., 2011).

3.3.2 Fire effective temperature and FRP retrieval from spectral fits

170 Fire effective temperatures and FRP were also derived using UV-to-SWIR spectral radiance measurements collected at 0.14-0.25 Hz from a calibrated field spectrometer (SVC HR1024i; Table 1). Fire effective temperature estimates, akin to those coming from the Dozier (1981) 'dual-band' approach, were retrieved from the measured spectra ($L_{\lambda, \text{measured}}$) – though the use of hyperspectral data enabled three thermal components to be derived (similar to in Wooster et al., 2005; Dennison et al., 2006; and Amici et al., 2011). Modelled spectra ($L_{\lambda, \text{modelled}}$) that provided the best fits to the measured spectra were constructed from three individually modelled spectral radiances (L_{FD} , L_{SD} , and L_{C}) coming respectively from assumed
175 flaming-dominated (FD, range 923-2000 K), smoldering-dominated (SD, 623-1023 K) and cooling (C, 280-623 K) emitters:

$$L_{\lambda, \text{modelled}} = \sum_{i=1}^{n=3} p_i B_{\lambda}(T_i) \quad (7)$$

where the fractional areas sum to 1, and $B_{\lambda}(T_i)$ the Planck radiance emitted by each fractional component was calculated using Eq. 4. Brightness temperature (T_i) and fractional area (p_i) of each component was iterated to provide the best match between $L_{\lambda, \text{modelled}}$ and ($L_{\lambda, \text{measured}}$).

Commented [FO10]: (RC1) Line 163: Symbols/characters between "each image that had" and "600 K" seem to be garbled
Commented [FO11R10]: (RC2) #line 163 – typo - 'T ³ 600

Commented [FO12]: (RC1) Line 171: Suggest writing "(L_FD+L_SD+L_C)" as "(L_FD, L_SD, and L_C)" for clarity

Formatted: Font: Italic

Formatted: Font: Italic

Formatted: Font: Italic

Formatted: Font: Italic

Formatted: Font: Italic

A blackbody assumption was made during application of Eq. 7, and burns were conducted in the dark to prevent
180 contamination by reflected sunlight. Due to the small distances involved in the measurement setup, no atmospheric
transmission adjustments were required to the spectra. CO₂ and H₂O absorption and emission regions could be seen in the
measured spectra (e.g., at 1400, 1900 and 2500 nm in Fig. 2a) but were simply excluded from the model fitting process.
Since little thermal emission occurs in the HR1024i spectral range from targets below ~500 K, the approach is not very well
suited to retrieving temperatures below this limit. As per Wooster et al. (2005), FRP estimates were derived as the sum of the
185 radiative emissions from the retrieved flaming and smoldering components:

$$FRP = A \sum_{i=1}^{n=2} \sigma p_i T_i^4 \quad (8)$$

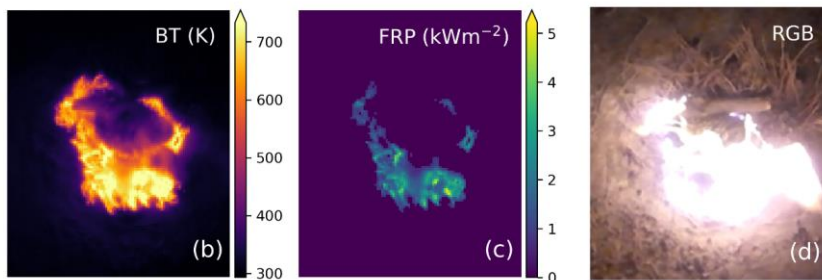
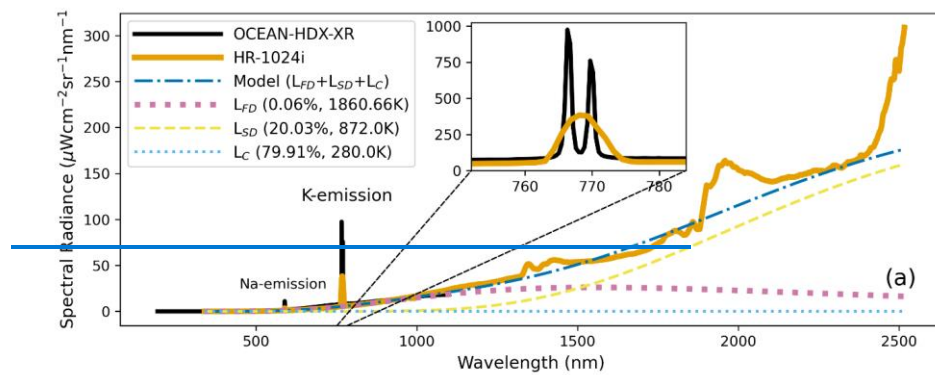
where σ is the Stefan-Boltzmann constant A is the FOV area (0.064 m²). This shall be referred to as the FRP retrieved using
the spectral-fitting method, FRP_{SF}.

Figure 2 shows an example modelled and measured spectra from a single experimental burn, with excellent agreement seen
outside of the previously mentioned gaseous absorption and emission regions.

190 FRP retrievals made using the thermal infrared brightness temperatures from the PI400 appeared to show good agreement
with those derived from the HR1024i VIS to SWIR spectra (see example in Fig. 3a). However, further validation
investigations are required, such as in daytime retrievals. The data from the PI400 were subsequently used for all analysis
since they provide a higher measurement frequency, and one that matches those of the AKBD measures (see Sect. 3.3.3).
The PI400 data also provides spatially mapped FRP data rather than just a single 'fire-integrated' value.

195

Formatted: Font: Italic



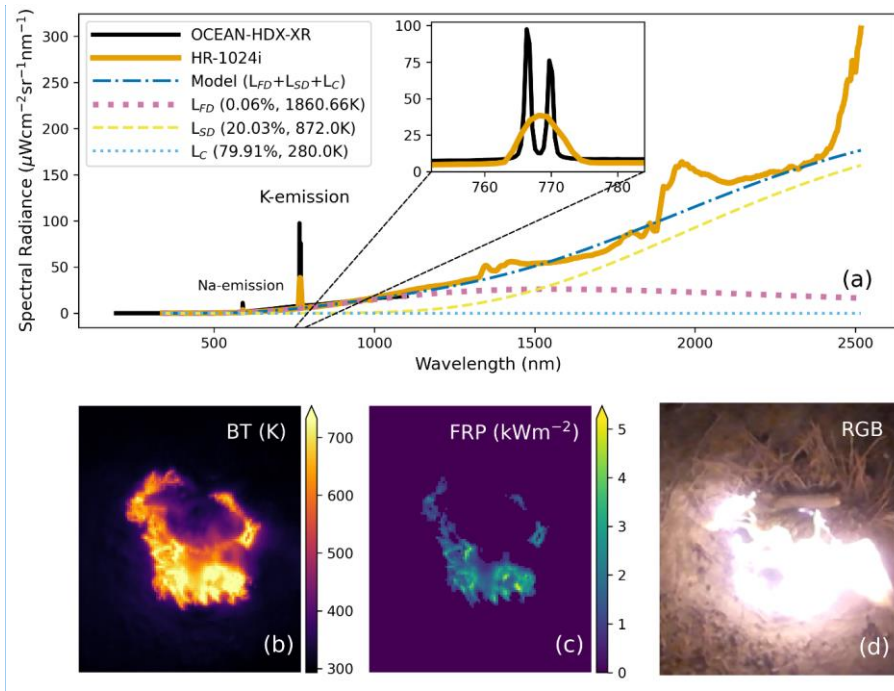


Figure 2. Snapshot of an exemplar 23 x 23 cm experimental pine forest litter fire viewed from nadir using the setup shown in Fig. 1. Fire is shown at the time of maximum flaming activity: (a) Fire radiative emission spectra as measured by the OCEAN-HDX-XR (Ocean Insight, UV-to-NIR) and HR1024i (SVC, UV-to-SWIR) spectrometers, with magnitudes adjusted for the FOV difference between the two instruments. Modelled spectra derived from the spectral-fitting method described in Sect. 3.3.2 and its three temperature components (retrieved fractional area (%) and temperature (K) are listed in the legend); (b) Temperature (K) measured by the PI400 (Optris); (c) Fire Radiative Power (FRP, kWm^{-2}) derived from the PI400 thermal imagery, as calculated via the Stefan-Boltzmann law and omitting pixels below 650 K (see Section 3.3.1); (d) Frame from RGB video camera.

Commented [FO13]: (RC2) #Fig 2 – Closing bracket missing on plot y-axis

Commented [FO14R13]: (AC) We have also corrected the axis scale on the subplot which has mistakenly been amplified by a factor of 10 in the original.

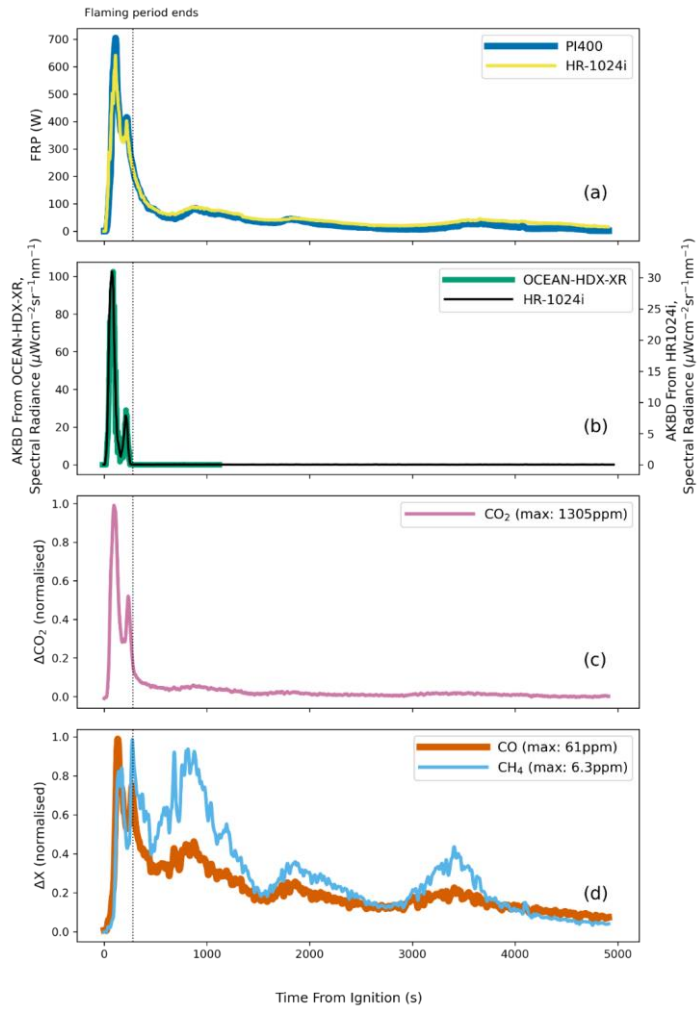


Figure 3. Data from the exemplar pine forest litter fire shown in Fig. 2: (a) FRP time-series derived from brightness temperature imagery collected by the Optris PI400 thermal imager and VIS-to-SWIR spectral collected by the HR1024i. Data for a single time-step are shown in Fig. 2a; (b) Comparison of AKBD K-line metric derived from

210 spectra measured by the OCEAN-HDX-XR and HR1024i spectrometers around the location of the potassium
emission line (see Sect. 3.3.3); (c) Time-series of excess (Δ) CO₂, CO and CH₄ (ppm) concentrations in the smoke from
this fire, each normalized by their maximum value (given in the legend). The time flaming activity ceased as
determined by the RGB video record is marked by the vertical dashed line.

3.3.3 K-line measurements

215 An OCEAN-HDX-XR spectrometer (Table 2) was used to provide 1 Hz K-line measurements of each fire. The instrument
measurement diameter was 53 cm at the fuel bed, and the instrument calibrated to provide data in spectral radiance units
using an Ocean Insight HL-3P-CAL calibration lamp. The resulting spectra were used to measure K-line strength using the
AKBD metric introduced in Sect. 2.

The HR1024i can also provide K-line spectra, though its 3.5 nm spectral resolution in the K-line region is coarser than the
220 1.1 nm of the OCEAN-HDX-XR. Comparison of their AKBD data (e.g., Fig. 3b) showed excellent agreement (R^2 of 0.99;
with a linear best fit of gradient of 0.381 ± 0.002 and negligible intercept). However, the AKBD measured by the OCEAN-
HDX-XR are more than twice as large as from the HR1024i. This is despite the former's larger measurement area; this is due
to its higher spectral resolution, which is evident in its ability to better resolve the individual potassium emission lines (see
Fig. 2a). Since the OCEAN-HDX-XR also provided a higher measurement frequency, its AKBD data were used for all
225 subsequent analysis.

3.4 Smoke measurements

3.4.1 CO₂, CO and CH₄ mixing ratios

Trace gas measures of the smoke from every fire was continuously directed via the hood and through the extraction flue
(Fig. 1), and used to calculate smoke emission rates and MCE. Continuous CO₂, CO and CH₄ mixing ratio measures were
230 taken at an inlet at location C (Fig. 1) using an adapted Los Gatos Research (LGR) Ultraportable Greenhouse Gas Analyzer
laser absorption spectrometer (described in Zhang et al., 2015). However, for the crop residue fires, the LGR was
unavailable, so a GasLab CM-1000 was deployed instead. This instrument uses a Non-Dispersive Infrared (NDIR) detector
to assess CO₂ mixing ratios, and an electrochemical sensor to assess CO. The differing response times of these two detectors

Commented [FO15]: (RC2) #line 213 – 'measure'

were accounted for using the method of Zhang et al. (2020) such that continuous MCE measurements could be derived using

Eq. 1. Excess concentrations of CO₂, CO and CH₄, along with the matching FRP and AKBD data, are shown in Fig. 3c and 3d for an example pine forest litter fire.

3.4.2 Trace gas emission rates

To account for any variability in the extraction system, the gas flow rates through the flue were calculated by combining the trace gas concentrations (Sect. 3.4.1), 1 Hz pressure difference measurements (dP [Pa]) between the inside and outside of the flue using a Testo 440, and the flue gas temperature using two thermocouples. Gas velocity (v [m s⁻²]) was derived from the pressure data using the Bernoulli equation:

$$v = \sqrt{\frac{2dP}{\rho_X}} \quad (9)$$

where ρ_X is the density of species X (kg m⁻³). Temperatures of the flue gases varied by up to 40 K over the course of individual fires. Therefore, ρ_X was adjusted using:

$$\rho_X = \frac{MM_X P}{RT_{TC}} \quad (10)$$

where MM_X is the molar mass of gas species X, R is the ideal gas constant (8.3145 mol⁻¹K⁻¹), P is pressure, which was assumed to be constant of 101 kPa as the pressure difference measurements from the Testo were negligible in comparison, and T_{TC} is the temperature recorded by a thermocouple in the flue (in K). The measured emission rate of X, $\left(\frac{dM_X}{dt}\right)_m$, in g s⁻¹ was then calculated by:

$$\left(\frac{dM_X}{dt}\right)_m = A_{CS}\rho_X v 10^{-6}\Delta X \quad (11)$$

where A_{CS} is the cross-sectional area of the flue at location D (0.01767 m²) and ΔX is the excess concentration of X (in ppm) in the flue and 10⁻⁶ is a unit conversion factor for the gas concentration.

3.4.3 Experimental Procedure

In total, 12 pine forest litter, 12 oak kindling, and 8 crop residue fires were conducted over a period of 1 week, during which ambient air temperature in the Chamber ranged from 9 to 12°C and relative humidity from 71 to 75%. After preparation of

each fuel bed, the extraction flue and all instruments were turned on and the pre-fire trace-gas ambient concentrations calculated as the mean of the sixty 1 Hz concentration measurements taken immediately before each ignition. Ignition was made using a blowtorch applied to one edge of the fuel bed, with a small amount of sawdust added to help ignite the oak kindling. Measurements only ceased when concentrations of CO₂ and CO closely approached those pre-fire. Post-fire, the cooling char, ash, and any unburned fuel was removed and the next fuel bed prepared. Fuel mass ranged from 125 g to 250 g for the pine litter fires, 220 g to 410 g for oak, and 100 g to 200 g for crop residue. Fire duration across the 32 burns ranged from 16 to 42 minutes.

4. Laboratory experiment results

4.1 K-line detection

As with previous work (Amici et al., 2011; Magidimisha and Griffith, 2017; Vodacek et al., 2002), the detection of a K-line signature coincided with clear flaming combustion seen in the RGB video record. An AKBD $\geq 1.5 \mu\text{Wcm}^{-2}\text{sr}^{-1}\text{nm}^{-1}$ was always recorded by the OCEAN-HDX-XR when flames were visible. A higher MCE was also recorded when the AKBD signal was high, indicating that a higher proportion of fuel carbon was being completely oxidized to CO₂ than when the AKBD was low. We built on these observations to attempt to link the K-line emission signal to quantitative improvements in our ability to estimate the trace gas emission.

4.2 Fire effective temperature and spectral fitting

Figure 4 shows the fire effective temperature and area parameters derived using fits to the spectra of a single pine forest litter fire. Whilst the total FRP from these fits agrees with that derived using the PI400 as already stated (Fig. 3a), the individual FRP calculated for the separate flaming and smoldering components do not appear very realistic. The highest combustion rate is seen in the period from ignition to when all flaming activity ceased, and it is here that the highest rates of CO₂ production occur (Fig. 3c). However, the 'flaming FRP' is reported as far smaller than the 'smoldering FRP' even during this period (Fig. 4a), even though fuel consumption was clearly dominated by flaming combustion at this time (also shown by the CO₂ production in Fig. 3c). Therefore, these separate flaming and smoldering FRP components do not appear well matched to how each combustion phase is actually contributing to overall fuel consumption.

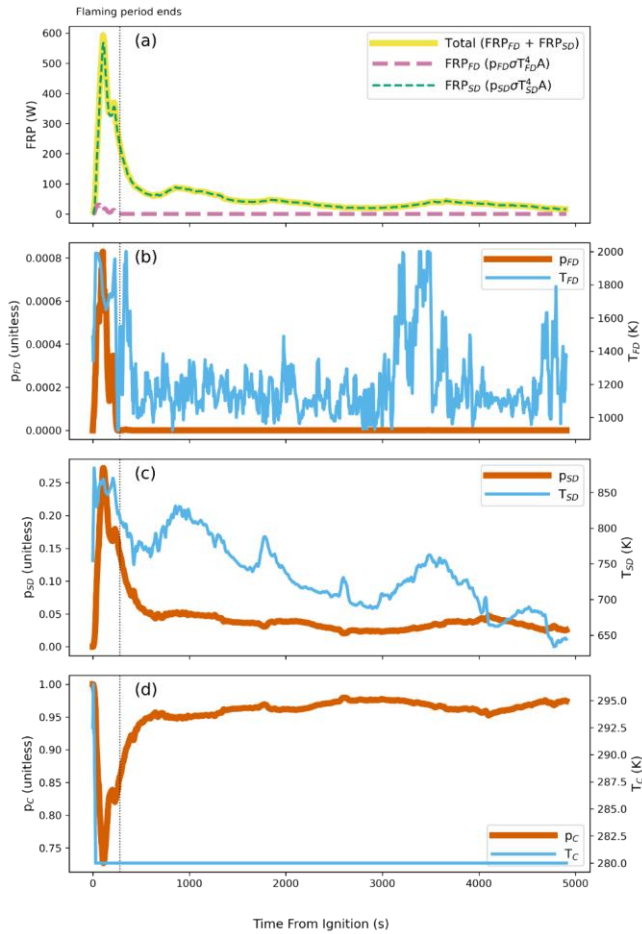


Figure 4. Time-series of results of the spectral-fitting method for the pine forest litter fire also shown in Fig. 3: (a) FRP derived from the two separate fire components (Eq. 6), the first is meant to represent the flaming zone ($923 \text{ K} < T_{FD} < 2000 \text{ K}$), the second the smoldering zone ($623 \text{ K} < T_{SD} < 1023 \text{ K}$), and their sum is the total of these two; (b) The fractional area, p_{FD} , and temperature, T_{FD} , of the first component representing flaming-dominated combustion; (c) The fractional area, p_{SD} , and temperature, T_{SD} , of the second component representing smoldering-dominated

combustion; (d) The fractional area, p_c , and temperature, T_c , of the third component representing the cooling non-fire background. The end of the flaming period, the time when all flames appeared to cease in the RGB camera data, is indicated by the vertical dotted line.

285

Going further, for all fires on which this method was tested, we found that retrievals of the second fire component derived from the spectral fits and meant to represent the smoldering combustion contribution always dominated the total FRP. In contrast, retrieved temperatures in the flaming zone (T_{FD}) were frequently very high, often above 1600 K during the flaming period of Fig. 4b for example, but those of p_{FD} (flaming proportional area) very small (e.g., never larger than 0.085%) – which led to a low contribution to total FRP. As there is little emission from the cooler smoldering component in the spectral region measured, this ‘flaming’ component is derived by fitting at shorter wavelengths and some of this signal is coming from hot soot in the flames rather than from the burning fuel itself. Parameters such as flame depth and soot concentration, which are significant drivers of flame emissivity (Johnston et al., 2014), therefore influence the retrievals. Similar to the AKBD measurements, we observed that flames were present while $f_1 \geq 0.0016\%$ (Fig. 4a). However, any daytime measurements will require the removal of the reflected solar radiation component present at VIS to SWIR wavelengths (discussed further in Sect. 5.1.2). This task that can introduce large uncertainty, especially when dealing with coarse spatial resolution imagery where at the shorter wavelengths the solar reflected signal maybe far larger than that from the fire. The AKBD calculation is unaffected by this issue since it quantifies the strength of the K-line above the combination of reflected solar radiation and Planckian emission signal.

290

295

300

4.3 Combustion phase emission relationships

Figures 5a, 5b and 5c show, respectively, how emission rates of CO_2 , CO and CH_4 vary with FRP – in this case for the example pine forest litter fire. Each data point is colored by MCE, indicating the mix of smoldering, and flaming combustion ongoing at each measurement time. High MCE (maximally dominated by flaming combustion) is yellow, and lower MCE (maximally dominated by smoldering combustion) is in dark blue. Points having a contemporaneous AKBD signal $\geq 1.5 \mu\text{Wcm}^{-2}\text{sr}^{-1}\text{nm}^{-1}$ are outlined, indicating the confirmed presence of flaming combustion via the K-line signal.

305

It is clear from the hysteresis-shaped patterns present in Fig. 5 that any assumption of a purely linear relationship between trace gas emission rate and FRP is flawed, and that instead such relationships are combustion phase dependent. This agrees with previous lab-based studies comparing FRP to CO₂ and CO emission rates (e.g., Freeborn et al., 2008).

310 Generally, soon after ignition, the fires enter a ‘flaming-dominated’ stage that produces a steep linear increase in CO₂ production with increasing FRP (Fig. 5a). Smoldering can and does occur during this ‘flaming-dominated’ stage, but it is consuming very little of the fuel compared to flaming. This is different to the ‘flaming period’ – which we class as the period of the burn when flames are present as defined via AKBD thresholding. During this time, significant smoldering combustion can also occur, particularly as the fire is transitioning away from the flaming-dominated stage. As the smoldering-dominated stage begins (no flaming activity), there also appears to be a linear relationship between FRP and CO₂ emission, but with a
315 gradient far lower than that found during the flaming-dominated stage. During the flaming period, the data of Fig. 5a falls between the two linear clusters representing the flaming-dominated and smoldering-dominated stages, with MCE values indicating a mixed contribution from both flaming and smoldering activity.

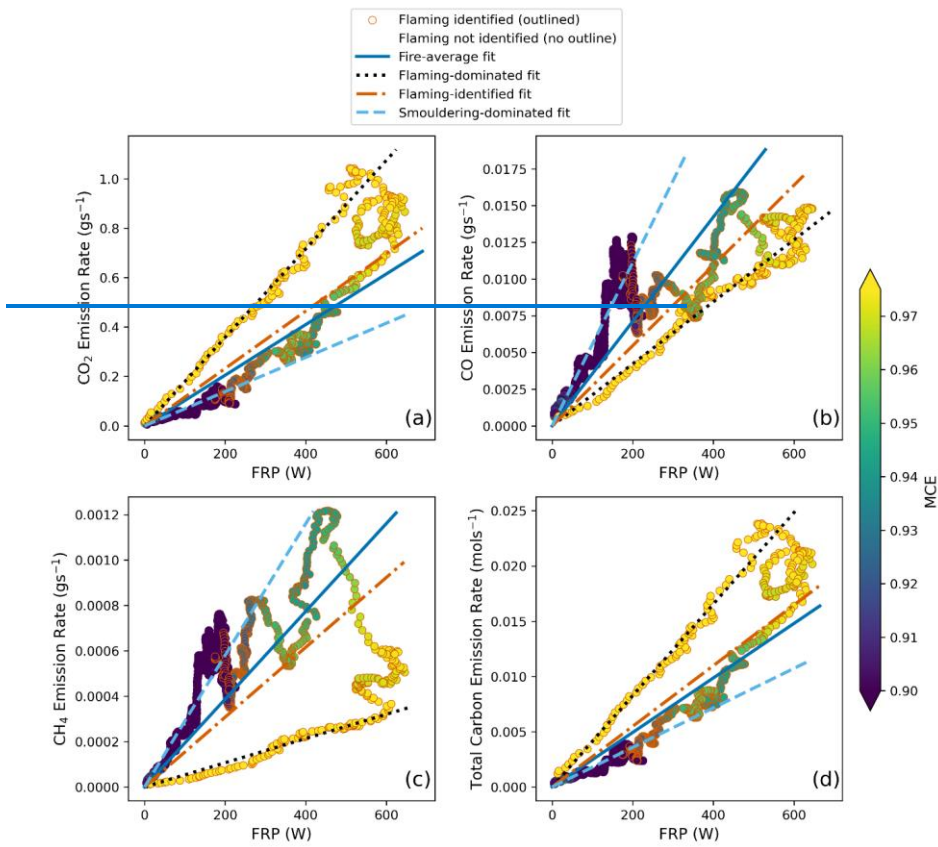
As expected, for the ‘preferentially smoldering’ species CO (Fig. 5b) and CH₄ (Fig. 5c), the relationship between FRP and trace gas emission rates are opposite in nature to those of the ‘preferentially-flaming’ CO₂ (Fig. 5a). The emission rates of
320 CO and CH₄ increase linearly with FRP, but with a slope significantly lower than that for CO₂ during the early flaming-dominated stage. During the smoldering-dominated stage however, these slopes increase but the data are less well fitted by a linear relationship than during the flaming-dominated stage. The latter is possibly contributed to by a lower plume buoyancy during the smoldering-dominated stage, when some of the smoke may not have made it directly into the extraction flue.

325 Based on these data, we developed and tested three different empirical models that use the remotely sensed measures to estimate the fires trace gas emission rates. The first model uses only remotely sensed FRP measures - and supposes a ‘fire-averaged’ relationship between FRP and trace gas emission rate, which is assumed for example within the classical [Fire Radiative Energy Emissions \(FREM\)](#) approach developed for use with satellite FRP data (Mota and Wooster, 2018; Nguyen et al., 2023; Nguyen and Wooster, 2020). The second two models use the K-line measures in addition to FRP and are aimed
330 at providing a more nuanced trace gas emission rate estimate by considering the different relations seen during flaming and smoldering combustion. We used data from 23 ‘training’ fires across all fuel types to develop the parameters of each model.

Commented [FO16]: (RC2) #line 322 – define FREM acronym

Nine were randomly selected from each of the pine forest litter and oak kindling burns, and five from the crop residue burns.

Three fires of each fuel type were then used to evaluate, or 'test', the models.



Formatted: Centered

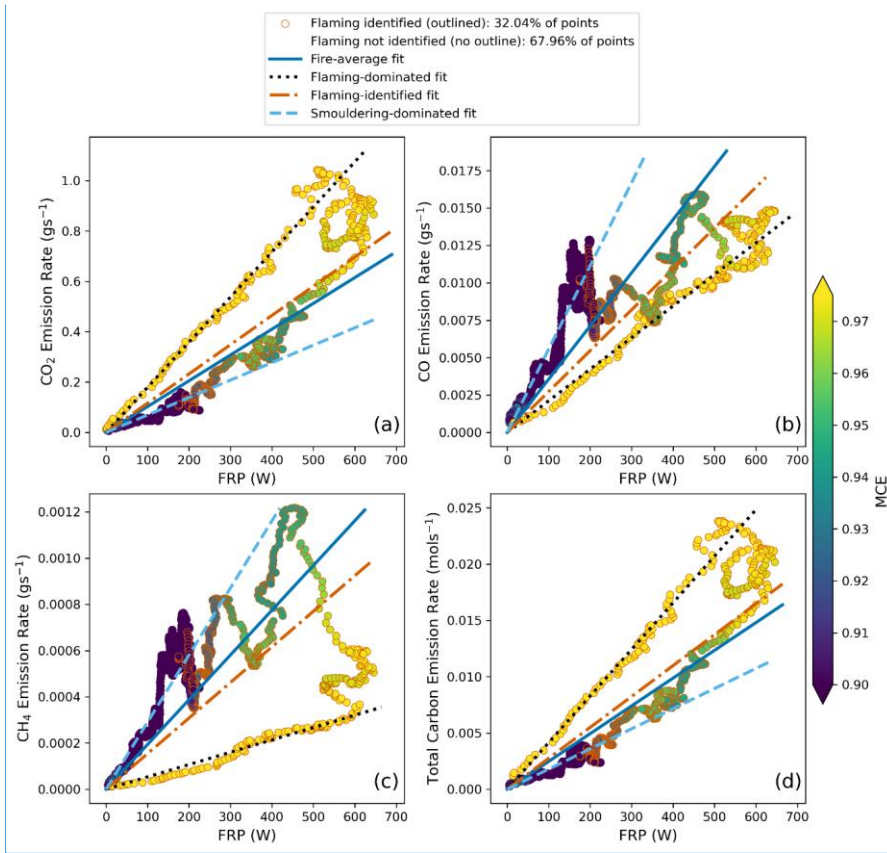


Figure 5. Relationships between trace gas emission rate and FRP for (a) CO₂, (b) CO, (c) CH₄, and (d) total carbon flux in moles (i.e., moles of CO₂, CO and CH₄). FRP here is derived from the PI400 brightness temperature imagery as described in Section 3.3.1. These data are from a single pine forest litter training fire (Fire 11), and each point is colored by its MCE at the time of measurement, and those when AKBD > 1.5 μWcm⁻²sr⁻¹nm⁻¹ (as derived from the OCEAN-HDX-XR) indicating the presence of some flaming activity (flaming period) are distinguished from smoldering-dominated points by their outline. Emissions coefficients for flaming-dominated (MCE > 0.975), flaming-

Commented [FO17]: (RC2) #Figure 5/line 301– for clarity would be beneficial to include the percentage of observations which were detected as containing flaming combustion (e.g. AKBD > 1.5). It appears to be the majority in the plots although in reality most observations are in the smoldering phase (e.g. Fig 3) which has less variation in values.

identified (AKBD $\geq 1.5 \mu\text{Wcm}^{-2}\text{sr}^{-1}\text{nm}^{-1}$), fire-average and smoldering-dominated (AKBD $< 1.5 \mu\text{Wcm}^{-2}\text{sr}^{-1}\text{nm}^{-1}$), which were calculated from the ‘training’ fires (including Fire 11) and are presented in Table 2.

4.4 Emission models account for combustion phase

345 4.4.1 Model 1: fire-average

As with the FREM approach this model assumes a simple linear relationship between FRP and trace gas emission rate of

species X, $\left(\frac{dM_X}{dt}\right)_{modelled}$.

$$\left(\frac{dM_X}{dt}\right)_{modelled} = C_A^X FRP \quad (12)$$

where the average emission coefficient C_A^X , was calculated by dividing the sum of all emission rate measures by the sum of all FRP measures. This model acts as a baseline to which the performance of the further two models that incorporate K-line

350 information could be compared. C_A^X values for the three fuels are presented in Table 2.

Table 2: Emission coefficients, C_{CPh}^X , for the trace gas emission rates of CO₂ and CO (and CH₄ where measured), for each combustion phase (CPh) scenario (fire-average, flaming-dominated, flaming-identified, smoldering-dominated) for pine forest litter, oak kindling and crop residue fires. Units are g s⁻¹ MW⁻¹.

Trace Gas Emission Coefficients (g s ⁻¹ MW ⁻¹)					
		Fire-average (A)	Flaming-dominated (FD)	Flaming-identified (FI)	Smoldering-dominated (SD)
Pine forest litter	CO ₂	880 ± 2	1560 ± 12	1100 ± 4	523 ± 2
	CO	33.4 ± 0.1	15.0 ± 0.1	25.8 ± 0.1	45.5 ± 0.1
	CH ₄	2.03 ± 0.01	0.586 ± 0.008	1.53 ± 0.005	2.82 ± 0.01
Oak kindling	CO ₂	888 ± 2	1950 ± 44	1030 ± 3	464 ± 2
	CO	22.8 ± 0.1	3.58 ± 0.08	18.0 ± 0.1	37.0 ± 0.1
	CH ₄	0.792 ± 0.002	0.0741 ± 0.002	0.749 ± 0.002	0.922 ± 0.003

Crop residue	CO ₂	804 ± 6	1670 ± 40	982 ± 10	434 ± 5
	CO	42.4 ± 0.4	16.4 ± 1.1	43.3 ± 0.6	40.5 ± 0.8

355 4.4.2 Model 2: FRP and AKBD magnitude (FAM)

In this second model, the emission rate of trace gas species X was modelled as the sum of that coming from separately considered flaming and smoldering activity:

$$\left(\frac{dM_X}{dt}\right)_{modelled} = C_{FD}^X FRP_{FD} + C_{SD}^X FRP_{SD} \quad (13)$$

where FRP_{FD} and FRP_{SD} are the contributions of the flaming-dominated (FD) and smoldering-dominated (SD) components of the fire to total FRP (i.e., FRP_{FD} + FRP_{SD} = FRP). C_{FD}^X and C_{SD}^X are the flaming-dominated and smoldering-dominated emission coefficients between FRP and the emission rate of species X. Values for C_{FD}^X were derived by ratioing the total amount of species X emitted by the total FRP released for data during the time when MCE exceeded a threshold that produced the highest R² for a linear fit (e.g., MCE > 0.975 for pine). For the smoldering emission coefficients (C_{SD}^X) only data when AKBD < 1.5 μWcm⁻²sr⁻¹nm⁻¹ were used since this confirmed the absence of flaming combustion. Examples are shown in Fig. 5, with the derived emissions coefficients for each fuel shown in Table 2.

365 This model requires distinguishing the relative contribution of each combustion phase to the total FRP recorded at any particular time. By assuming that FRP_{FD} is directly proportional to AKBD (i.e. FRP_{FD} = m_k AKBD, where m_k is a constant) Eq. 13 becomes:

$$\left(\frac{dM_X}{dt}\right)_{modelled} = C_{FD}^X (m_k^{\square} AKBD) + C_{SD}^X (FRP - m_k^{\square} AKBD) \quad (14)$$

where AKBD > 1.5 μWcm⁻²sr⁻¹nm⁻¹ to exclude noise. m_k values were determined by solving Eq. 14 with the measured AKBD, FRP and emission rates of the training fires using a least-squares approach. Mean and standard errors for the three fuels were: 4.99±0.04 W(μWcm⁻²sr⁻¹nm⁻¹)⁻¹ (pine), 5.90±0.32 W(μWcm⁻²sr⁻¹nm⁻¹)⁻¹ (oak) and 3.25±0.79 W(μWcm⁻²sr⁻¹nm⁻¹)⁻¹ (crop residue). Although these standard errors do not overlap, the values of m_k are rather close to one another, and this was unexpected given that different fuels are likely to contain different concentrations of potassium. However, use of a single fuel-independent m_k is very useful as it means any future application of the method would not need to know the fuel

type that is burning. Therefore, we selected the mean m_k , along with its propagated uncertainty, of $4.71 \pm 0.28 \text{ W}(\mu\text{Wcm}^{-2}\text{sr}^{-1}\text{nm}^{-1})^{-1}$ for use with all fuels to in the performance assessment stage, which was based on the nine test fires. Since this model relies on quantifying the strength of the potassium emission signal, we refer to it herein as the FRP and AKBD Magnitude (FAM) method or Model 2.

4.4.3 Model 3: FRP and AKBD identification (FAI)

As with the FAM model, this third model also considers the K-emission and FRP of the fire, but only uses the K-line presence or absence, rather than its magnitude. The rationale for this is that NIR wavelength radiation may be significantly scattered by smoke in thick wildfire plumes, perhaps altering the measured AKBD magnitude. The model therefore does not attempt to separate FRP_{FD} and FRP_{SD} , but instead multiplies the total FRP by different emission coefficients depending on whether or not a K-line is detected:

$$\left(\frac{dM_X}{dt}\right)_{\text{modelled}} = C_{\text{FI}}^X \text{FRP}, \text{ when AKBD} \geq 1.5 \mu\text{Wcm}^{-2}\text{sr}^{-1}\text{nm}^{-1} \quad (15)$$

$$= C_{\text{SD}}^X \text{FRP}, \text{ when AKBD} < 1.5 \mu\text{Wcm}^{-2}\text{sr}^{-1}\text{nm}^{-1} \quad (16)$$

where C_{SD}^X is the same smoldering-dominated FRP-emission rate gradient from the FAM method in Eq. 13 for when no flaming is identified. Then, for when some flaming combustion is detected, FRP is instead multiplied by a ‘flaming-identified’ ratio, C_{FI}^X . This was calculated by dividing the total emission of X by the total FRP when $\text{AKBD} > 1.5 \mu\text{Wcm}^{-2}\text{sr}^{-1}\text{nm}^{-1}$, i.e. during the flaming periods of the training fires. Examples for the three trace gases are shown in Fig. 5. The average across all fires for every fuel type tested are presented in Table 2.

4.5 Emission model evaluation and intercomparison

The performance of the three different remote sensing-based models in estimating trace gas emission rates were evaluated, with results for one of the pine forest litter fires shown in Fig. 6. Figure 6a shows the FRP time series, and Fig. 6b the AKBD time series. Using combinations of these data, the conventional, fire-average Model 1 underestimates CO_2 production compared to reality during the early stages of a fire when flaming activity dominates, and then overestimates it during the subsequent smoldering stage. This can be seen in Fig. 6c, for example, and is a consequence of the relationship found between FRP and CO_2 emission rate described in Sect. 4.3 and Fig. 5a. Likewise, the results for CO and CH_4 production act

Commented [FO18]: (RC1) Line 369: Not clear what the uncertainty (0.28) attached to the mean m_k represents or how it was calculated.

Commented [FO19]: (RC1) Eqs. (15): I think the condition here should be \geq to be consistent with the K-line detection described in section 4.1.

Commented [FO20]: (RC1) Line 385: Here and later in the text, change "timeseries" to "time series".

in the opposite direction to those of CO₂, these being generally overestimated during the flaming-dominated stage and underestimated during the smoldering stage (see Supplementary Materials).

In addition to the total measured FRP, Fig. 6a also presents the estimated contribution of flaming and smoldering combustion to the FRP signal – based on the FAM (Model 2) approach. The FRP is initially totally dominated by ~~that from~~ flaming combustion, but variable amounts of smoldering combustion then commence and eventually become dominant. This pattern appears much more realistic than the flaming and smoldering contributions to FRP calculated using the spectral-fitting approach (Sect. 4.2), which significantly underestimates flaming phase contributions to overall FRP. Model 2 also produces an estimated trace gas emission rate time series that is in far better agreement with the trace gas measures than are those from the fire-average Model 1. The comparison in Fig. 6d indicates that RMSE for the FAM model is less than half that of the fire-average approach, and the average RMSE reduction is reported in Table 3. For CO₂ these reductions were very significant; 58±4% (pine); 46±4% (oak) and 35±13% (crop residue). For CO and CH₄ they are less significant, and the FAM (Model 2) approach showed little ability to improve upon the ability to estimate CO emission rates of the oak fires compared to Model 1 (-1.2±14.4 %). While the FAM approach produced a smaller instantaneous error for estimating CO than the fire-average approach for two of the three test fires, for the third the estimate was much poorer (see Fig. A6), which affected the average performance. However, there was some improvement for the other two fuel types, and in general Model 2 improves CO and CH₄ emission rate estimation compared to Model 1 - but to a far lesser extent than for CO₂. However, for MCE the improvements provided by Model 2 over Model 1 are very significant, even for the oak fires. The reduction in RMSE compared to the fire-average approach ranges from 40±7% (soy) to 54±6% (pine).

Like the FAM approach, the FAI method (Model 3) also uses AKBD measures - but now just in a binary ‘on/off’ fashion, as detailed in Sect. 4.4.3. The approach proves significantly more accurate in terms of trace gas emission rate estimation than does the ‘fire-average’ approach (Model 1) but does not perform as well as the FAM approach. For example, the reduction in RMSE for instantaneous MCE estimations is lower, ranging from 17±6% (soy) to 37±12% (pine).

Overall, our results from these combustion chamber burns indicate that FRP-based estimates of trace gas release rates can be greatly improved via the addition of K-line measurements. We also tested modified versions of the Model 2 (FAM) and 3 (FAI) approaches that estimated fuel combustion rate prior to trace gas emissions, but the performance was almost identical

to that without this additional step (see Appendix B). This work indicates that the relationship between FRP and combustion rate differs significantly between smoldering and flaming combustion.

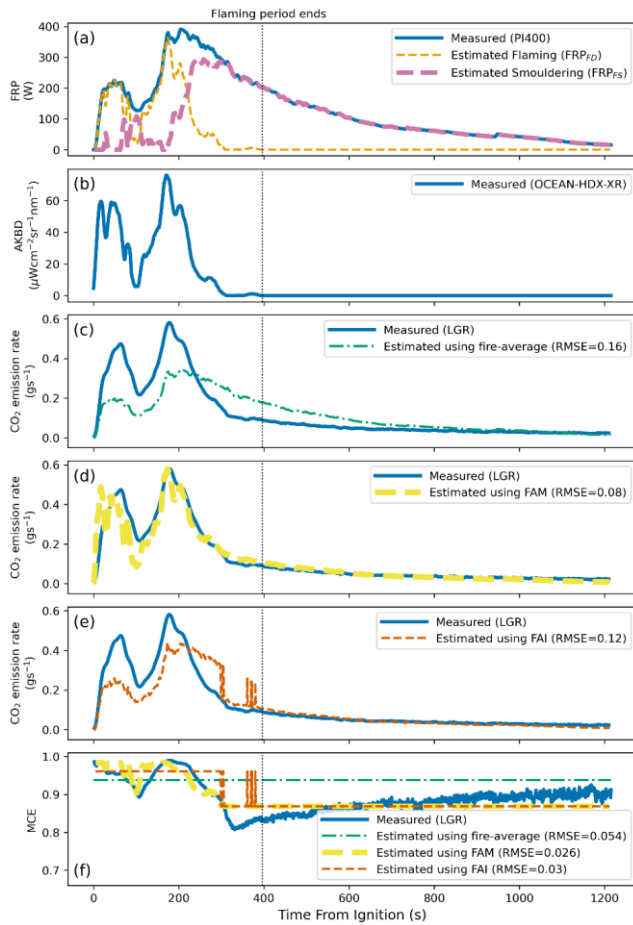


Figure 6. FRP, AKBD and trace gas emission rate time series for an exemplar pine forest litter ‘test’ fire (Fire 3). (a)

425 FRP (W) calculated from the PI400 thermal imagery, along with the estimated flaming and smoldering components derived from this and the complementary AKBD measures; (b) AKBD ($\mu\text{Wcm}^{-2}\text{sr}^{-1}\text{nm}^{-1}$) derived from spectra

recorded by the OCEAN-HDX-XR spectrometer; trace gas emission rate of CO₂ (gs⁻¹) compared to that estimated with (c) the fire-average approach (Model 1); (d) the FAM approach (Model 2); (e) the FAI approach (Model 3); and (f) measured and modelled MCE. The end of the flaming period as determined by the RGB video camera record is denoted by the vertical dotted line.

430

Table 3: Mean RMSE between the measured and three modelled emission rates and MCE for each fuel type. Also includes the mean difference in RMSE for the FAM (Model 2) and FAI (Model 3) approaches compared to the fire-average (Model 1) method (%).

Fuel	Trace Gas Species and MCE	Approach Used to Estimate Emissions				
		Model 1: fire-average	Model 2: FAM		Model 3: FAI	
		Mean RMSE	Mean RMSE	Mean difference with fire-average (%)	Mean RMSE	Mean difference with fire-average (%)
Pine forest litter	CO ₂ (gs ⁻¹)	0.18±0.02	0.10±0.02	-46±7	0.13±0.02	-27±3
	CO (mgs ⁻¹)	3.9±0.3	3.5±0.5	-12±6	3.7±0.6	-6.1±9.2
	CH ₄ (mgs ⁻¹)	0.49±0.04	0.37±0.04	-26±2	0.44±0.02	-9.6±5.6
	MCE	0.048±0.003	0.022±0.002	-54±6	0.029±0.004	-37±12
Oak kindling	CO ₂ (gs ⁻¹)	0.45±0.14	0.24±0.08	-46±4	0.40±0.13	-14±3
	CO (mgs ⁻¹)	6.1±0.5	6.1±1.1	-1.2±14.4	5.7±0.9	-8.8±7.5
	CH ₄ (mgs ⁻¹)	0.43±0.04	0.41±0.03	-4.9±1.3	0.43±0.06	-2.6±4.6
	MCE	0.056±0.003	0.032±0.001	-43±3	0.035±0.005	-37±7

Crop residue	CO ₂ (gs ⁻¹)	0.32±0.03	0.19±0.03	-35±13	0.28±0.02	-10±1
	CO (mgs ⁻¹)	8.0±1.3	5.7±0.3	-23±12	7.0±0.6	-7.7±8.5
	MCE	0.052±0.007	0.030±0.001	-40±7	0.042±0.002	-17±6
Average across all fuels	CO ₂			-42±15		-17±4
	CO			-12±20		-7.5±14.6
	CH ₄			-15±5		-6.1±7.2
	MCE			-46±10		-30±15

435

5. Applications to airborne data

5.1 Methodology

5.1.1 Airborne data

The results in Sect. 4 show the benefits of combining remotely sensed FRP and AKBD measures when estimating trace gas
 440 emission rates of small-scale laboratory fires. However, ultimately, we aim at applications based on satellite EO measures
 and real landscape burning. Whilst satellite-derived K-line measurements from space have only been demonstrated once
 (Amici et al., 2012), the increasing launch of spaceborne imaging spectrometers provides the possibility for more routine
 observations with the necessary spatial/spectral resolution. Whilst we wait for those data, we here demonstrated the approach
 using airborne EO of real wildfires burning in the boreal forests of northern Ontario, Canada. The airborne remote data used
 445 comes from the Specim FENIX VIS-to-SWIR hyperspectral imager, covering the same spectral range with the same FWHM
 spectral resolution in the K-line region as the HR1024i, meaning we could apply essentially the same approaches and models
 developed in our laboratory study (Sect. 3.3.2 and 3.3.3).

5.1.2 FRP and K-line retrievals

Our FRP retrieval process required slight modification for the airborne EO application, in order to account for the reflected
 450 solar radiation present in the daytime imagery. For this, areas of water were masked from the scene and the active fire pixels

detected using the HFDI index (Dennison and Roberts, 2009). All ‘non-fire’ pixels were then categorized into ‘burned’ and ‘unburned’ using the classification process of Waigl et al. (2019). Mean ‘burned’ and ‘unburned’ spectra were calculated using 200 pixels of each class, and these incorporated into the spectral-fitting model (Eq. 6) applied to each active fire pixel:

$$L_{\lambda, \text{measured}} = p_u L_{\lambda, u} + p_b L_{\lambda, b} + \sum_{i=1}^{n=3} \varepsilon \tau p_i B_{\lambda}(T_i) \quad (17)$$

where $L_{\lambda, u}$ and $L_{\lambda, b}$ are the mean radiance calculated in the neighboring unburned and burned pixels at wavelength λ and p_u and p_b are their area fractions of the pixel. All fractional areas sum to 1. The final component is the same as that used previously.

For inclusion in Eq. 17, the MODTRAN atmospheric radiative transfer model (Berk et al., 1999) was used to estimate atmospheric transmittance (τ) from the surface to the aircraft altitude of 2500 m, assuming a 1976 US standard atmosphere, a 23 km visibility and an atmospheric CO₂ concentration of 420 ppm. As with the laboratory data, only wavelengths above 1200 nm were included in the spectral fitting approach and application of Eq. 16 to each active fire pixel, in order to reduce the influence of atmospheric scattering by smoke. Per-pixel FRP was again calculated from the derived p_i and T_i values using the Stefan-Boltzmann law (Eq. 7). Figure 7c shows measured and modelled spectra of a single example active fire pixel, and as with the HR1024i data (Fig. 2a) the two agree extremely well.

As this FRP retrieval method relies mostly on the second, smoldering temperature component (L_{SD}), it is likely to still be valid despite the unknown influence of reflected solar radiation at the smaller wavelengths on L_{FD} . Although further validation efforts are required to confirm this. On the other hand, relying on a non-zero value for the fractional area of L_{FD} to indicate flaming combustion is no longer valid. The retrieved p_{FD} for many pixels was often zero, whilst the magnitude of the AKBD parameter indicated flaming combustion was present. The opposite was also true: many pixels with a significant p_{FD} had a very low or zero AKBD. Therefore, AKBD was more trusted than p_{FD} for indicating the presence of flaming combustion since the measurement was not influenced by reflected sunlight.

Commented [FO21]: (RC1) Eqs. 4 and 17: Here also please use italics consistently for variables and constants - see comment above in reference to Eqs. 2 and 3.

Formatted: Font: Italic

Formatted: Font: Italic

Formatted: Font: Italic

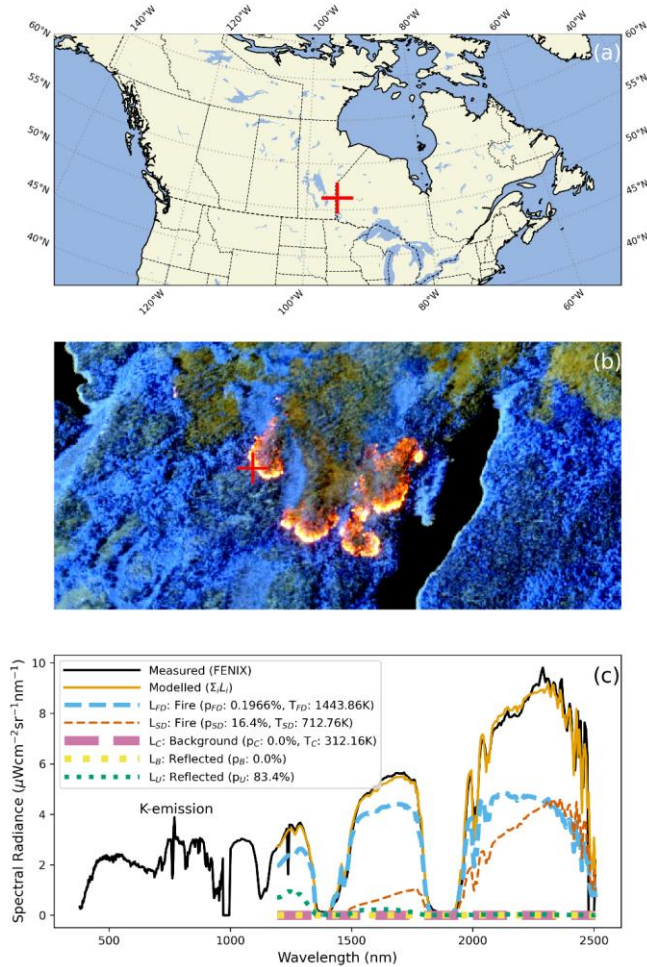


Figure 7. Daytime airborne VIS-SWIR data taken on 11th August 2018 using a Specim FENIX hyperspectral imager flown over a boreal forest wildfire burning in Northwestern Ontario, Canada: (a) Map showing fire location (51.293° N, 94.805° W); (b) Infrared color composite image comprised of data collected in bands centered at 2.2, 1.6 and 1.1 microns (RGB) with spatial resolution of 4m, the scene is 1020 m x 2160 m; (c) Exemplar spectra (VIS to

Commented [FO22]: (RC1) Fig. 7: Please state approximate spatial dimensions of panel (b).

Commented [FO23R22]: (RC2) #line 430 what is the spatial resolution of the hyperspectral data used in this analysis? To what extent does spatial resolution influence the detection of pixels containing flaming activity?

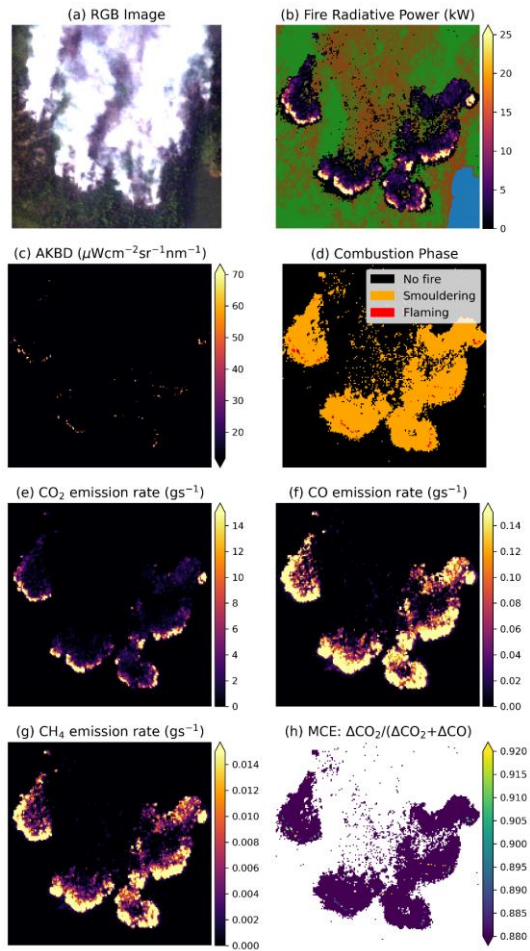
SWIR) of an active fire pixel (location shown in the infrared color composite (b)), with the best matched modelled spectra derived using the spectral-fitting approach (Eq. 16), along with the individual components that sum to that spectra: L_{FD} (fire, flaming-dominated), L_{SD} (fire, smoldering-dominated), L_b (background/cooling fuel), and the reflected sunlight components L_U (unburned) and L_B (burned).

480 The emission coefficients for the pine forest litter fuel, shown in Table 2, were used to convert the derived per-pixel FRP values to trace gas emission rates. For the FAM approach, the proportionality constant (m_k) linking AKBD and flaming FRP (Eq. 13) was taken from the mean of $0.0201 \pm 0.0012 \text{ W}(\mu\text{Wcm}^{-2}\text{sr}^{-1}\text{nm}^{-1})^{-1}$ determined for the three different fuels, with this value including an adjustment for differences between the pixel size and FWHM of the FENIX and HR1024i instruments. The same value was used in all results presented in Section 4 (and the Appendix).

485 5.2 Airborne data results

Figure 8a shows a true color composite of the wildfire, complementing the infrared color composite shown in Fig. 7. Thick smoke blows away from the fire front, masking much of the land and supporting the decision to base FRP retrieval on wavelengths longer than 1200 nm less affected by Mie scattering (Sect. 5.1.2). By contrast, the longer NIR and SWIR wavelengths are far less affected, and the land and fire can be viewed clearly through the smoke (Fig. 8a). Figure 7b maps 490 the FRP of each active fire pixel based on the spectral fitting method (see the example at a single pixel shown in Fig. 8b). Non-fire pixels are here colored depending on their proportion burned – p_B and p_U (Eq. 17). Overall, the imagery shows five fire front heads having high-FRP and likely flaming activity advancing against the wind, with lower FRP areas in the (presumed largely smoldering) zone behind.

Figure 8c maps AKBD, used to class fire pixels as flaming or smoldering. The AKBD map indicates that flaming activity is 495 indeed present in the high FRP fire front pixels, and only a few lower FRP spots of flaming activity exist in the largely smoldering zone. Applying the FAM approach, Fig. 8e, 8f and 8g show estimated CO_2 , CO and CH_4 emission rates for the fire, and Fig. 8h the MCE. Higher MCE smoke is emanating from the flaming fronts, and lower MCE from the smoldering zone apart from the few spots still flaming.



500 **Figure 8.** 4 m spatial resolution airborne imagery and derived fire and smoke characteristics of the wildfire shown in Fig. 7. This scene is 700 m x 700 m wide. (a) RGB color composite to compare to the SWIR color composite shown in Fig. 7b; (b) FRP derived using spectral-fitting approach (Eq. 16), with non-fire pixels colored depending on whether they are classed as burned (brown) and unburned (green) via the method discussed in Sect. 5.1.2, masked out water

pixels of a lake in the bottom right of the scene are shown in blue; (c) AKBD derived using Eq. 5 (Sect. 2); (d)
505 Combustion phase of each active fire pixel derived from an AKBD threshold of $0.57 \mu\text{Wcm}^{-2}\text{sr}^{-1}\text{nm}^{-1}$; emission rate
derived using the FAM approach of (e) CO_2 ; (f) CO and (g) CH_4 ; along with (h) the MCE estimated using the same
approach.

The total emission rate of CO_2 for the entire fire is estimated using the FRP and AKBD data by the FAM (Model 2) as
 $20.2 \pm 0.1 \text{ kgs}^{-1}$, with a relatively similar $22.9 \pm 0.2 \text{ kgs}^{-1}$ estimated from Model 2 (FAI). Each is significantly lower than the
510 $33.5 \pm 0.2 \text{ kgs}^{-1}$ estimated using the Model 1 (FRP only) approach with the ‘fire-averaged’ emissions coefficient, essentially
because this approach overestimates CO_2 emission rate when smoldering combustion is dominant (see Fig. 5a and 6c). The
degree of overestimation could have been worse because only 1.4% of the detected active fire pixels in the airborne image of
Fig. 8 contain flaming activity.

Since the majority of the fuel consumption is coming from smoldering combustion, the FAM and FAI approaches estimate
515 higher emission rates for CO and CH_4 than does the fire-average approach. For CO the models estimate the following:
 $1270 \pm 10 \text{ gs}^{-1}$ (fire-average), $1720 \pm 10 \text{ gs}^{-1}$ (FAM) and $1630 \pm 10 \text{ gs}^{-1}$ (FAI), and for CH_4 : $77.2 \pm 0.6 \text{ gs}^{-1}$ (fire-average), 107 ± 1
 gs^{-1} (FAM), and $100 \pm 1 \text{ gs}^{-1}$ (FAI). Therefore, whilst flaming combustion contributes around 2.4% of total CO_2 production, it
contributes only around 0.3% and 0.2% of CO and CH_4 production, respectively. Flaming combustion is therefore
responsible for around 2% of the fuel consumption rate.

520 Since the wildfire smoke contained copious amounts of particulates (Fig. 8a), altered (and even missed) AKBD
measurements may have resulted from Mie scattering. Therefore, this may make the FAI approach more appropriate than the
FAM approach. Overall, while the trace gas emission rate estimates from the FAM and FAI approaches are relatively similar
(535 ± 6 and $592 \pm 9 \text{ mols}^{-1}$ of carbon), they are very different to those of the fire-average approach ($811 \pm 10 \text{ mols}^{-1}$ of carbon).
Their application accounts for the fact that the fire is mostly smoldering – information that would otherwise be missed.

525 6. Summary and conclusions

Combustion phase and the proportion of flaming and smoldering activity occurring in landscape fires varies with fuel type
and fuel characteristics. This, in turn, influences the rate of fuel consumption and smoke emission, along with the smoke

Commented [FO24]: (RC1) Fig. 8: Based on the panels above I would expect the MCE to show a bit more spatial variability. Would a nonlinear color scale possibly reveal more features?

(AC) Thank you for the suggestion, and we agree that one might expect more spatial variability in MCE. We did try several color scales to highlight this, but with no real success in revealing more features than those that can be seen already (some flaming activity at the fire front with some small flaming spots behind in the smoldering zone).

The fire in Fig. 8 was mostly smoldering when the aircraft image was taken as the K-line was only detected in 1.4% of the detected active fire pixels. This dominance of smoldering activity area explains the low level of MCE variability. We have mentioned this explicitly in the caption and in future we look forward to analysing new data of more flaming dominated wildfires.

emissions chemical composition via its effect on the emissions factors (EFs) of the individual emitted chemical species. There is increasing interest in tailoring the EFs applied within fire emissions estimates, for example to cope with the presumed seasonal variations in emissions factors (Vernooij et al., 2023, 2022). Earth observation has long been suggested as a way to do this, by remotely mapping combustion phase to improve global smoke emissions estimation. We have provided the first attempt at evaluating whether such methods actually lead to the desired improvements, using laboratory burns of three fuel types to test two approaches of determining combustion phase that (i) use remotely sensed retrievals of sub-pixel fire temperature, and (ii) utilization of potassium emission line (K-line) signatures that only occur during flaming combustion.

Whilst the first approach produced fire temperature estimates that were able to provide accurate FRP values, the individual fit parameters were not easily related to the smoke emissions characteristics. On the other hand, measurements of the K-line emission strength were related to the emission rates of CO₂, CO and CH₄, leading us to develop two empirical models that used (Model 2) the magnitude of the K-line emission strength, and (Model 3) only its identification and combined these with the FRP data to better estimate fire smoke emissions rate and smoke chemical composition.

When compared to the standard FRP-only approach (Model 1) used to represent classical smoke emission estimate methods, the combination of FRP and K-line data significantly increased the accuracy of the resulting emission rate estimates of the trace gases examined. It also significantly improved estimation of the modified combustion efficiency (MCE) of the fires smoke plumes, which directly relates to the contribution of flaming and smoldering combustion to the smoke. We did not find the ability to remotely determine sub-pixel fire effective temperature to provide similar improvements.

The FRP and K-line magnitude approach (Model 2) reduced the RMSE of the MCE estimates for the emitted smoke by between 54±6% and 40±7%, depending on fuel type, when compared to the FRP only 'standard' approach (Model 1). The equivalent RMSE reductions seen for Model 3 were lower, but still significant (-37±12%, -37±7%, and -17±6%, respectively). These results provide evidence that complementary FRP and K-line data could be used widely to improve fire emissions estimation, not only for the gases tested here but also for many others since MCE is well correlated to the EF of many species (Bertschi et al., 2003; McMeeking et al., 2009; Urbanski, 2013; Yokelson et al., 1996). Our findings point to the potential for using this method with future spaceborne high spectral resolution data that can map the K-line from space at

the same time as thermal remote sensing is used to retrieve the fires FRP. According to our findings, such complementary data shows for the first time a proven ability to determine sub-pixel fire combustion phase which can provide an ability to significantly improve fire emission estimation. We then demonstrate the value of the most effective approach on airborne remote sensing data of real wildfires, pointing the way to its ultimate application to potentially improving global fire emissions estimation through its application to spaceborne observations.

Data availability

All the data in this study are available from the authors upon request.

560 Author contributions

FOB: Conceptualization, Methodology, Formal Analysis, Investigation, Writing – Original Draft, Visualization. MW: Conceptualization, Funding acquisition, Writing – Review & Editing, Supervision. MG: Methodology, Writing – Review & Editing. YL: Resources, Writing – Review & Editing.

Competing interests

565 The contact author has declared that none of the authors have any competing interests.

Acknowledgements

We thank Dr Zixia Liu from King's College London for assisting with the collection techniques for the trace gas measurements in the laboratory. The Leverhulme Centre for Wildfires, Environment and Society and National Centre for Earth Observation (NCEO) are both thanked for their support of this research. We also thank the European Space Agency (ESA) for supporting the featured airborne campaign. NERC British Antarctic Survey (BAS) are thanked for their support in providing and operating the airborne platform used during the campaign, whilst the NERC Airborne Research and Survey Facility (ARSF), and now the NCEO Airborne Earth Observatory (NAEO) Team of NCEO-King's College London, are thanked for coordinating and delivering the campaign. The UK's NERC Earth Observation Data Acquisition and Analysis

Service (NEODAAS) processed the hyperspectral airborne data used herein to a calibrated and co-located Level 1b product.

575 The views in this publication can in no way be taken to reflect the official opinion of the European Space Agency or any other funding body.

Financial support

FOB is supported by a PhD Studentship from the London NERC DTP (grant no. NE/R012148/1). The practical work undertaken in this research was supported by the Leverhulme Centre for Wildfires, Environment and Society through the
580 Leverhulme Trust (grant number RC-2018-023), by NERC National Capability funding to the National Centre for Earth Observation (NCEO, NE/Ro16518/1), and by the European Space Agency project ‘Evaluation and Validation of Sentinel-3 Active Fire Detector and FRP Products experiment’ (FIDEX; Contract number 4000136760/21/NL/FF/ab).

References

- 585 Akagi, S.K., Yokelson, R.J., Wiedinmyer, C., Alvarado, M.J., Reid, J.S., Karl, T., Crouse, J.D., Wennberg, P.O., 2011. Emission factors for open and domestic biomass burning for use in atmospheric models. *Atmospheric Chemistry and Physics* 11, 4039–4072. <https://doi.org/10.5194/acp-11-4039-2011>
- Amici, S., Wooster, M.J., Piscini, A., 2011. Multi-resolution spectral analysis of wildfire potassium emission signatures using laboratory, airborne and spaceborne remote sensing. *Remote Sensing of Environment* 115, 1811–1823. <https://doi.org/10.1016/j.rse.2011.02.022>
- 590 Andreae, M.O., 2019. Emission of trace gases and aerosols from biomass burning - An updated assessment. *Atmospheric Chemistry and Physics* 19, 8523–8546. <https://doi.org/10.5194/acp-19-8523-2019>
- Andreae, M.O., Merlet, P., 2001. Emission of trace gases and aerosols from biomass burning. *Global biogeochemical cycles* 15, 955–966. <https://doi.org/10.1029/2000GB001382>
- 595 Berk, A., Anderson, G.P., Bernstein, L.S., Acharya, P.K., Dothe, H., Matthew, M.W., Adler-Golden, S.M., Chetwynd, Jr., J.H., Richtsmeier, S.C., Pukall, B., Allred, C.L., Jeong, L.S., Hoke, M.L., 1999. MODTRAN4 radiative transfer

Formatted: Line spacing: Double

modeling for atmospheric correction, in: Larar, A.M. (Ed.), . Presented at the SPIE's International Symposium on Optical Science, Engineering, and Instrumentation, Denver, CO, USA, p. 348. <https://doi.org/10.1117/12.366388>

600 Bertschi, I., Yokelson, R.J., Ward, D.E., Babbitt, R.E., Susott, R.A., Goode, J.G., Hao, W.M., 2003. Trace gas and particle emissions from fires in large diameter and belowground biomass fuels. *Journal of Geophysical Research: Atmospheres* 108. <https://doi.org/10.1029/2002jd002100>

Burling, I.R., Yokelson, R.J., Akagi, S.K., Urbanski, S.P., Wold, C.E., Griffith, D.W.T., Johnson, T.J., Reardon, J., Weise, D.R., 2011. Airborne and ground-based measurements of the trace gases and particles emitted by prescribed fires in the United States. *Atmospheric Chemistry and Physics* 11, 12197–12216. <https://doi.org/10.5194/acp-11-12197-2011>

605 Burling, I.R., Yokelson, R.J., Griffith, D.W.T., Johnson, T.J., Veres, P., Roberts, J.M., Warneke, C., Urbanski, S.P., Reardon, J., Weise, D.R., Hao, W.M., De Gouw, J., 2010. Laboratory measurements of trace gas emissions from biomass burning of fuel types from the southeastern and southwestern United States. *Atmos. Chem. Phys.* 10, 11115–11130. <https://doi.org/10.5194/acp-10-11115-2010>

610 Chuvieco, E., Mouillot, F., Van Der Werf, G.R., San Miguel, J., Tanase, M., Koutsias, N., García, M., Yebra, M., Padilla, M., Gitas, I., Heil, A., Hawbaker, T.J., Giglio, L., 2019. Historical background and current developments for mapping burned area from satellite Earth observation. *Remote Sensing of Environment* 225, 45–64. <https://doi.org/10.1016/j.rse.2019.02.013>

Coheur, P.-F., Clarisse, L., Turquety, S., Hurtmans, D., Clerbaux, C., 2009. IASI measurements of reactive trace species in biomass burning plumes. *Atmos. Chem. Phys.* 9, 5655–5667. <https://doi.org/10.5194/acp-9-5655-2009>

615 Dennison, P.E., Charoensiri, K., Roberts, D.A., Peterson, S.H., Green, R.O., 2006. Wildfire temperature and land cover modeling using hyperspectral data. *Remote Sensing of Environment* 100, 212–222. <https://doi.org/10.1016/j.rse.2005.10.007>

Dennison, P.E., Matheson, D.S., 2011. Comparison of fire temperature and fractional area modeled from SWIR, MIR, and TIR multispectral and SWIR hyperspectral airborne data. *Remote Sensing of Environment* 115, 876–886. <https://doi.org/10.1016/j.rse.2010.11.015>

620

- Dennison, P.E., Roberts, D.A., 2009. Daytime fire detection using airborne hyperspectral data. *Remote Sensing of Environment* 113, 1646–1657. <https://doi.org/10.1016/j.rse.2009.03.010>
- Dozier, J., 1981. A method for satellite identification of surface temperature fields of subpixel resolution. *Remote Sensing of Environment* 11, 221–229. [https://doi.org/10.1016/0034-4257\(81\)90021-3](https://doi.org/10.1016/0034-4257(81)90021-3)
- 625 Freeborn, P.H., Wooster, M.J., Hao, W.M., Ryan, C.A., Nordgren, B.L., Baker, S.P., Ichoku, C., 2008. Relationships between energy release, fuel mass loss, and trace gas and aerosol emissions during laboratory biomass fires. *Journal of Geophysical Research Atmospheres* 113, 1–17. <https://doi.org/10.1029/2007JD008679>
- Garg, P., Wang, S., Oakes, J.M., Bellini, C., Gollner, M.J., 2024. Variations in gaseous and particulate emissions from flaming and smoldering combustion of Douglas fir and lodgepole pine under different fuel moisture conditions. *Combustion and Flame* 263, 113386. <https://doi.org/10.1016/j.combustflame.2024.113386>
- 630 Giglio, L., Justice, C.O., 2003. Effect of wavelength selection on characterization of fire size and temperature. *International Journal of Remote Sensing* 24, 3515–3520. <https://doi.org/10.1080/0143116031000117056>
- Giglio, L., Kendall, J.D., 2001. Application of the Dozier retrieval to wildfire characterization: a sensitivity analysis. *Remote Sensing of Environment* 77, 34–49. [https://doi.org/10.1016/S0034-4257\(01\)00192-4](https://doi.org/10.1016/S0034-4257(01)00192-4)
- 635 Giglio, L., Randerson, J.T., Van Der Werf, G.R., 2013. Analysis of daily, monthly, and annual burned area using the fourth-generation global fire emissions database (GFED4). *Journal of Geophysical Research: Biogeosciences* 118, 317–328. <https://doi.org/10.1002/jgrg.20042>
- Ichoku, C., Kaufman, Y.J., 2005. A method to derive smoke emission rates from MODIS fire radiative energy measurements. *IEEE Trans. Geosci. Remote Sensing* 43, 2636–2649. <https://doi.org/10.1109/TGRS.2005.857328>
- 640 Johnston, J.M., Wooster, M.J., Lynham, T.J., 2014. Experimental confirmation of the MWIR and LWIR grey body assumption for vegetation fire flame emissivity. *International Journal of Wildland Fire* 23, 463–479. <https://doi.org/10.1071/WF12197>
- Kaiser, J.W., Heil, A., Andreae, M.O., Benedetti, A., Chubarova, N., Jones, L., Morcrette, J.-J., Razinger, M., Schultz, M.G., Suttie, M., van der Werf, G.R., 2012. Biomass burning emissions estimated with a global fire assimilation system based on observed fire radiative power. *Biogeosciences* 9, 527–554. <https://doi.org/10.5194/bg-9-527-2012>
- 645

Kaufman, Y.J., Kleidman, R.G., King, M.D., 1998. SCAR-B fires in the tropics: Properties and remote sensing from EOS-MODIS. *J. Geophys. Res.* 103, 31955–31968. <https://doi.org/10.1029/98JD02460>

Lacaux, J.P., Delmas, R., Jambert, C., Kuhlbusch, T.A.J., 1996. NO_x emissions from African savanna fires. *J. Geophys. Res.* 101, 23585–23595. <https://doi.org/10.1029/96JD01624>

650 Magidimisha, E., Griffith, D.J., 2017. Remote optical observations of actively burning biomass fires using potassium line spectral emission. *Fourth Conference on Sensors, MEMS, and Electro-Optic Systems* 10036, 1003611–1003611. <https://doi.org/10.1117/12.2244284>

Magidimisha, E., Naidoo, S., Faniso-Mnyaka, Z., Nana, M.A., Naidoo, S.V., Skosana, V., 2023. A UAV Based System for Real-Time Near-Infrared Monitoring of Small-Scale Wildfires. *International Journal on Advances in Software*.

655 Matheson, D.S., Dennison, P.E., 2012. Evaluating the effects of spatial resolution on hyperspectral fire detection and temperature retrieval. *Remote Sensing of Environment* 124, 780–792. <https://doi.org/10.1016/j.rse.2012.06.026>

McMeeking, G.R., Kreidenweis, S.M., Baker, S., Carrico, C.M., Chow, J.C., Collett, J.L., Hao, W.M., Holden, A.S., Kirchstetter, T.W., Malm, W.C., Moosmüller, H., Sullivan, A.P., Wold, C.E., 2009. Emissions of trace gases and aerosols during the open combustion of biomass in the laboratory. *J. Geophys. Res.* 114, D19210. <https://doi.org/10.1029/2009JD011836>

660 Mebust, A.K., Cohen, R.C., 2013. Observations of a seasonal cycle in NO_x emissions from fires in African woody savannas. *Geophysical Research Letters* 40, 1451–1455. <https://doi.org/10.1002/grl.50343>

Mota, B., Wooster, M.J., 2018. A new top-down approach for directly estimating biomass burning emissions and fuel consumption rates and totals from geostationary satellite fire radiative power (FRP). *Remote Sensing of Environment* 206, 45–62. <https://doi.org/10.1016/j.rse.2017.12.016>

665 Nguyen, H.M., He, J., Wooster, M.J., 2023. Biomass burning CO, PM and fuel consumption per unit burned area estimates derived across Africa using geostationary SEVIRI fire radiative power and Sentinel-5P CO data. *Atmos. Chem. Phys.* 23, 2089–2118. <https://doi.org/10.5194/acp-23-2089-2023>

Formatted: Line spacing: Double

- Nguyen, H.M., Wooster, M.J., 2020. Advances in the estimation of high Spatio-temporal resolution pan-African top-down biomass burning emissions made using geostationary fire radiative power (FRP) and MAIAC aerosol optical depth (AOD) data. *Remote Sensing of Environment* 248, 111971–111971. <https://doi.org/10.1016/j.rse.2020.111971>
- 670 Rabelo, E.R.C., Veras, C.A.G., Carvalho, J.A., Alvarado, E.C., Sandberg, D.V., Santos, J.C., 2004. Log smoldering after an amazonian deforestation fire. *Atmospheric Environment* 38, 203–211. <https://doi.org/10.1016/j.atmosenv.2003.09.065>
- 675 Reid, J.S., Eck, T.F., Christopher, S.A., Koppman, R., Dubovik, O., Eleuterio, D.P., Holben, B.N., Reid, E.A., Zhang, J., 2005. A review of biomass burning emissions part II: Intensive optical properties of biomass burning particles. *Atmospheric Chemistry and Physics* 5, 827–849. <https://doi.org/10.5194/acp-5-827-2005>
- Reid, J.S., Hobbs, P.V., 1998. Physical and optical properties of young smoke from individual biomass fires in Brazil. *J. Geophys. Res.* 103, 32013–32030. <https://doi.org/10.1029/98JD00159>
- 680 Reisen, F., Meyer, C.P., Weston, C.J., Volkova, L., 2018. Ground-Based Field Measurements of PM_{2.5} Emission Factors From Flaming and Smoldering Combustion in Eucalypt Forests. *Journal of Geophysical Research: Atmospheres* 123, 8301–8314. <https://doi.org/10.1029/2018JD028488>
- Ross, A.N., Wooster, M.J., Boesch, H., Parker, R., 2013. First satellite measurements of carbon dioxide and methane emission ratios in wildfire plumes: GOSAT MEASURE OF CO₂:CH₄ EMISSION RATIO. *Geophys. Res. Lett.* 40, 4098–4102. <https://doi.org/10.1002/grl.50733>
- 685 Urbanski, S., 2014. Wildland fire emissions, carbon, and climate: Emission factors. *Forest Ecology and Management* 317, 51–60. <https://doi.org/10.1016/j.foreco.2013.05.045>
- Urbanski, S.P., 2013. Combustion efficiency and emission factors for wildfire-season fires in mixed conifer forests of the northern Rocky Mountains, US. *Atmos. Chem. Phys.* 13, 7241–7262. <https://doi.org/10.5194/acp-13-7241-2013>
- 690 Vernooij, R., Eames, T., Russell-Smith, J., Yates, C., Beatty, R., Evans, J., Edwards, A., Ribeiro, N., Wooster, M., Strydom, T., Giongo, M.V., Borges, M.A., Menezes Costa, M., Barradas, A.C.S., Van Wees, D., Van Der Werf, G.R., 2023. Dynamic savanna burning emission factors based on satellite data using a machine learning approach. *Earth Syst. Dynam.* 14, 1039–1064. <https://doi.org/10.5194/esd-14-1039-2023>

Vernooij, R., Winiger, P., Wooster, M., Strydom, T., Poulain, L., Dusek, U., Grosvenor, M., Roberts, G.J., Schutgens, N.,

695

Van Der Werf, G.R., 2022. A quadcopter unmanned aerial system (UAS)-based methodology for measuring biomass burning emission factors. *Atmos. Meas. Tech.* 15, 4271–4294. <https://doi.org/10.5194/amt-15-4271-2022>

Vodacek, A., Kremens, R.L., Fordham, A.J., Vangorden, S.C., Luisi, D., Schott, J.R., Latham, D.J., 2002. Remote optical detection of biomass burning using a potassium emission signature. *International Journal of Remote Sensing* 23, 2721–2726. <https://doi.org/10.1080/01431160110109633>

700

Waigl, C.F., Prakash, A., Stuefer, M., Verbyla, D., Dennison, P., 2019. Fire detection and temperature retrieval using EO-1 Hyperion data over selected Alaskan boreal forest fires. *International Journal of Applied Earth Observation and Geoinformation* 81, 72–84. <https://doi.org/10.1016/j.jag.2019.03.004>

Ward, D.E., Radke, L.F., 1993. Emissions Measurements from Vegetation Fires : A Comparative Evaluation of Methods and Results, *Fire in the Environment: The Ecological, Atmospheric, and Climatic Importance of Vegetation Fires*, edited by: Crutzen, P. J. and Goldammer, J. G., JohnWiley, New York 53–76.

705

Wiedinmyer, C., Akagi, S.K., Yokelson, R.J., Emmons, L.K., Al-Saadi, J.A., Orlando, J.J., Soja, A.J., 2011. The Fire INventory from NCAR (FINN): a high resolution global model to estimate the emissions from open burning. *Geosci. Model Dev.* 17.

Wooster, M.J., Freeborn, P.H., Archibald, S., Oppenheimer, C., Roberts, G.J., Smith, T.E.L., Govender, N., Burton, M., Palumbo, I., 2011. Field determination of biomass burning emission ratios and factors via open-path FTIR spectroscopy and fire radiative power assessment: Headfire, backfire and residual smouldering combustion in African savannahs. *Atmospheric Chemistry and Physics* 11, 11591–11615. <https://doi.org/10.5194/acp-11-11591-2011>

710

Wooster, M.J., Roberts, G., Perry, G.L.W., Kaufman, Y.J., 2005. Retrieval of biomass combustion rates and totals from fire radiative power observations: FRP derivation and calibration relationships between biomass consumption and fire radiative energy release. *Journal of Geophysical Research Atmospheres* 110, 1–24. <https://doi.org/10.1029/2005JD006318>

715

- 720 Wooster, M.J., Roberts, G.J., Giglio, L., Roy, D.P., Freeborn, P.H., Boschetti, L., Justice, C., Ichoku, C., Schroeder, W.,
Davies, D., Smith, A.M.S., Setzer, A., Csiszar, I., Strydom, T., Frost, P., Zhang, T., Xu, W., de Jong, M.C.,
Johnston, J.M., Ellison, L., Vadrevu, K., Sparks, A.M., Nguyen, H., McCarty, J., Tanpipat, V., Schmidt, C., San-
Miguel-Ayanz, J., 2021. Satellite remote sensing of active fires: History and current status, applications and future
requirements. *Remote Sensing of Environment* 267, 112694. <https://doi.org/10.1016/j.rse.2021.112694>
- 725 Yokelson, R.J., Andreae, M.O., Akagi, S.K., 2013. Pitfalls with the use of enhancement ratios or normalized excess mixing
ratios measured in plumes to characterize pollution sources and aging. *Atmospheric Measurement Techniques* 6,
2155–2158. <https://doi.org/10.5194/amt-6-2155-2013>
- Yokelson, R.J., Griffith, D.W.T., Ward, D.E., 1996. Open-path fourier transform infrared studies of large-scale laboratory
biomass fires. *Journal of Geophysical Research Atmospheres* 101, 21067–21080. <https://doi.org/10.1029/96jd01800>
- Yokelson, R.J., Susott, R., Ward, D.E., Reardon, J., Griffith, D.W.T., 1997. Emissions from smoldering combustion of
biomass measured by open-path Fourier transform infrared spectroscopy. *J. Geophys. Res.* 102, 18865–18877.
730 <https://doi.org/10.1029/97JD00852>
- Zhang, T., Wooster, M., Green, D.C., Main, B., 2020. A Mathematical Approach to Merging Data from Different Trace
Gas/Particulate Sensors Having Dissimilar (T90) Response Times: Application to Fire Emission Factor
Determination. *Aerosol Air Qual. Res.* 20, 281–290. <https://doi.org/10.4209/aaqr.2019.02.0061>
- 735 Zhang, T., Wooster, M.J., Green, D.C., Main, B., 2015. New field-based agricultural biomass burning trace gas, PM 2.5,
and black carbon emission ratios and factors measured in situ at crop residue fires in Eastern China. *Atmospheric
Environment* 121, 22–34. <https://doi.org/10.1016/j.atmosenv.2015.05.010>
- Zheng, B., Chevallier, F., Ciais, P., Yin, Y., Wang, Y., 2018. On the Role of the Flaming to Smoldering Transition in the
Seasonal Cycle of African Fire Emissions. *Geophys. Res. Lett.* 45, 11,998–12,007.
<https://doi.org/10.1029/2018GL079092>
- 740 Zhukov, B., Lorenz, E., Oertel, D., Wooster, M., Roberts, G., 2006. Spaceborne detection and characterization of fires
during the bi-spectral infrared detection (BIRD) experimental small satellite mission (2001–2004). *Remote Sensing
of Environment* 100, 29–51. <https://doi.org/10.1016/j.rse.2005.09.019>

Appendices

Appendix A – spectral -fitting model

745 Reducing the modelled spectra to a single thermal component for the fire resulted in far poorer fits than with two components, particularly at shorter wavelengths, and increasing the number of thermal components delivered results having negligible fractional area and thus no detectable improvement in the modelled spectra. Thus, two fire thermal components were seen as the optimum choice – and allowed a high-quality fit to the measured spectra and a strong ability to estimate total FRP, but the retrieved fire temperatures could not be used to reliably estimate extent of flaming and
750 smoldering activity.

Appendix B – alternative approaches going via combustion rate

As detailed in Section 1, most conventional remote sensing approaches to estimating fire emissions rely on first estimating the fuel mass burned. Therefore, FAM and FAD approaches involving this step were also tested as an alternative to the more direct approaches evaluated in Section 4.4. Combustion rate (gs^{-1}) was determined by first estimating total carbon
755 flux (Figure 5d) in moles and multiplying this by 12 gmol^{-1} , the resulting figure agreeing well with the mass loss obtained from the scales data. Both emission factors and relationships between FRP and combustion rate were calculated for the four combustion types: fire-average, flaming-dominated, flaming-identified and smoldering. Models analogous to FAM and FAD were then tested. These estimated combustion rate, which was then multiplied by emission factors to give emission rates. These were then compared to the measured rates. The results were almost identical to those presented in
760 Section 4.5 as the methods are also identical, except for the step of converting to combustion rate. This method did, however, indicate that the relationship between measured FRP and rate of combustion was different between the two combustion phases.

Commented [FO25]: (RC2) References – a couple of references are missing details (e.g. Magidimisha et al and Urbanski, S.)

Commented [FO26R25]: (AC) Magidimisha updated to give journal name, however it does not appear to have a DOI. Urbanski updated.