

UAV Based In situ Measurements of CO₂ and CH₄ Fluxes over Complex Natural Ecosystems

Abdullah Bolek¹, Martin Heimann^{1,2}, and Mathias Göckede¹

¹Max Planck Institute for Biogeochemistry, Department of Biogeochemical Signals, Jena, Germany

²Institute for Atmospheric and Earth System Research, University of Helsinki, Helsinki, Finland

Correspondence: Abdullah Bolek (abolekbgc-jena.mpg.de)

Abstract. This study presents an unmanned aerial vehicle (UAV) platform used to resolve horizontal and vertical patterns of CO₂ and CH₄ mole fractions within the lower part of the atmospheric boundary layer. The obtained data contribute important information for upscaling fluxes from natural ecosystems over heterogeneous terrain, and for constraining hot spots of greenhouse gas (GHG) emissions. This observational tool, therefore, has the potential to complement existing stationary carbon monitoring networks for GHGs, such as eddy covariance towers and manual flux chambers. The UAV platform is equipped with two gas analyzers for CO₂ and CH₄ which are connected sequentially. In addition, a 2D anemometer is deployed above the rotor plane to measure environmental parameters including 2D wind speed, air temperature, humidity, and pressure. Laboratory and field tests demonstrate that the platform is capable of providing data with reliable accuracy, with good agreement between the UAV data and tower-based measurements of CO₂, H₂O, and wind speed. Using interpolated maps of GHG mole fractions, with this tool we assessed the signal variability over a target area, and identified potential hot spots. Our study shows that the UAV platform provides information about the spatial variability of the lowest part of the boundary layer, which up to this date remains poorly observed, especially in remote areas such as the Arctic. Furthermore, using the profile method, it is demonstrated that the GHG fluxes from a local source can be calculated. Although subject to large uncertainties over the area of interest, the comparison between the eddy covariance method and UAV-based calculations showed acceptable qualitative agreement.

1 Introduction

Quantifying the emissions of greenhouse gases (GHGs) plays a crucial role in understanding the current and future state of global climate change. Among the GHGs, CO₂ and CH₄ are the two major contributors to climate change, the former due to its abundance in the atmosphere, the latter due to its higher global warming potential (about 28 times more compared to CO₂ in a 100 year time frame (Andersen et al., 2018, 2023)). The CO₂ and CH₄ mole fractions in the lower atmospheric boundary-layer may vary significantly due to small-scale variations in surface-atmosphere exchange fluxes and carbon cycle processes caused by heterogeneity in the ecosystem. Manual flux chambers, eddy covariance (EC) towers, aircraft-based measurements, and satellite remote sensing are the conventional tools that are being used to quantify emissions at different scales from sub-meters

to hundreds of kilometers. However, scale separation between these measuring methods is broad, and there is an urgent need
25 for a method that can bridge the gap between local and regional scales while still being affordable (Bastviken et al., 2022).
Manual flux chambers with a typical footprint size smaller than 1 m² are a commonly used method to measure land surface
fluxes (Livingston and Hutchinson, 1995; Goulden and Crill, 1997; Conen and Smith, 1998; Levy et al., 2011). They are easy
to operate and applicable for a variety of regions (Conen and Smith, 1998), but resolve only small spatial scales (Baldocchi,
2003), which makes it challenging to upscale measurements for obtaining flux data that is representative for large scales. Over
30 the past decades, EC flux towers have become one of the most common tools to quantify the carbon fluxes (Baldocchi et al.,
2001; Aubinet et al., 1999). Using EC towers, carbon fluxes can be observed continuously, which is essential to understand
carbon exchange processes and the impact of environmental controls on their short-term, seasonal or inter-annual variation.
Furthermore, areas with the sizes of a hundred meters to several kilometers can be resolved by EC towers (Baldocchi, 2003),
depending on measurement heights, wind direction, atmospheric turbulence, and surface characteristics (Chu et al., 2021). The
35 changing field of view of an EC tower can be approximated with footprint modeling, but inherent uncertainties and location
biases may make interpretation of results difficult in complex terrain (Göckede et al., 2008; Chu et al., 2021). Therefore,
extrapolating local measurements to larger scales is challenging given the large spatial heterogeneity. Furthermore, EC towers
require constant maintenance and power, which might not always be possible, especially in remote places such as the Arctic. As
an option for larger-scale flux observations, aircraft-based measurement campaigns can be conducted, addressing the scaling
40 issues as well as bridging the gaps between bottom-up and top-down estimates (Chang et al., 2014; Sweeney et al., 2015; Parazoo et al., 2016;
Wolfe et al., 2018; Barker et al., 2022)(O'Shea et al., 2014; Chang et al., 2014; Sweeney et al., 2015; Parazoo et al., 2016; Wolfe
et al., 2018; Barker et al., 2022). However, aircraft-based measurements are expensive, logistically challenging, and have
difficulties flying close to the ground.

With recent developments in unmanned aerial vehicle (UAV) and sensor technology, UAVs have become suitable tools to
45 complement existing carbon monitoring networks, address the scale gap issue, and better represent aggregated signals over
heterogeneous landscapes. Compared to alternative approaches, UAVs can provide an ubiquitous, practical, and comparatively
inexpensive approach to quantify the variability in surface-atmosphere exchange processes at local to regional scales, whilst
particularly addressing the uncertainties associated with upscaling localized information from stationary EC towers in hetero-
geneous terrain. UAVs have been demonstrated as reliable tools to measure wind speed and estimate atmospheric turbulence
50 (Neumann and Bartholmai, 2015; Donnell et al., 2018; Palomaki et al., 2017; Shimura et al., 2018; Thielicke et al., 2021; Wetz
et al., 2021; Bolek and Testik, 2022; Wildmann and Wetz, 2022; Wetz et al., 2023) and GHG mole fractions (Gålfalk et al.,
2021; Andersen et al., 2018, 2023; Scheller et al., 2022; Morales et al., 2022; Kunz et al., 2018, 2020; Lampert et al., 2020),
which both are required to quantify the emission rates. In the past, three different approaches have been applied to quantify the
emission rates with UAVs: using a coil-shaped long stainless-steel tubing called Aircore to collect gas samples(Karion et al., 2010;
55 Andersen et al., 2018, 2023; Morales et al., 2022)(e.g. Karion et al., 2010; Andersen et al., 2018, 2023; Morales et al., 2022), collecting
atmospheric air in discrete samples via flasks (Lampert et al., 2020)(e.g. Lampert et al., 2020), and measuring the in situ mole
fractions onboard the UAV with compact GHG analyzers (Gålfalk et al., 2021; Kunz et al., 2018, 2020; Tuzson et al., 2020; Oberle et al., 2019; Liu et al.,
2022)(e.g. Gålfalk et al., 2021; Kunz et al., 2018, 2020; Tuzson et al., 2020; Oberle et al., 2019; Liu et al., 2022; Yong et al.,

2024). Aircore offers great flexibility for UAV-based measurements due to its light weight and ability to provide continuous measurements. However, it is limited in spatial resolution (about 40m 40 m in horizontal direction) and requires an immediate analysis of sampled air after the flight to avoid the loss of sample resolution due to molecular diffusion within the sampling tube (Andersen et al., 2018). Sampling with flasks cannot provide continuous measurements, and the required instrumentation is relatively heavy.

Onboard measurements using compact GHG analyzers can provide continuous measurements with high spatial resolution. Several studies estimated fluxes over landfills using continuous in situ GHG observation with UAVs (Allen et al., 2019; Gålfalk et al., 2021), but so far, only few studies targeting signals over natural terrain have been published. This was mostly due to the low signal-to-noise ratio and/or heavy weights of previously available portable gas analyzers (Shaw et al., 2021), restricting application to high-flux environments or limiting the total flight time of the UAV platforms. Recently, portable gas analyzers have become more precise and light enough, to be deployed on UAVs with a reasonable flight time (~20 mins), but to date there are only a few guidelines available for flight strategies that allow to reliably constrain the GHG measurements both qualitatively and quantitatively over natural emission sources/sinks (Scheller et al., 2022; Shaw et al., 2021). Therefore, more studies collecting in situ GHG mole fractions on board a UAV with different flight strategies are needed to improve our understanding of how to best use these UAV platforms to complement the existing carbon network.

Here, we present a UAV-based monitoring platform instrumented with CO₂ and CH₄ gas analyzers, and an ultrasonic anemometer to measure 2-D wind speed, air temperature, humidity, and pressure. This setup allows us to quantify CO₂ and CH₄ mole fractions in the lower atmospheric boundary layer over terrain composed of different landscape features. This provides valuable information to characterize the impact of landscape heterogeneity on GHG patterns in the lower atmosphere and to identify local emission sources in complex terrains. The aim of this study is to demonstrate the applicability of the developed UAV platform for both qualitatively assessing GHG signal variabilities over heterogeneous landscape and quantifying the GHG mole fractions and fluxes from the lower part of the atmospheric boundary layer. In Sect. 2, the UAV platform and the used methodologies are introduced. Results of the ~~laboratory-tests-of-gas-analyzers-and~~ different field tests are presented in Sect. 3, and finally, conclusions are given in Sect. 4.

2 Field Site Characteristics and Methodologies

2.1 Laboratory Tests of Gas Analyzers

The Licor Li-850 and Aeris Strato gas analyzers used to measure the atmospheric CO₂ and CH₄ mole fractions on the UAV platform (see Sect. 2.3) were subjected to several tests under a controlled environment. First, a standard air mixture of known mole fractions was sampled by both analyzers for approximately four hours to quantify the signal stability over time. It was observed that measurements of the Li-850 were subject to a nearly linear drift over time, whereas measurements by the Aeris Strato analyzer partly displayed non-linear fluctuations (see Fig. A1) for around the first two hours. The signal stabilizes two hours after powering up and hence the Strato analyzer was powered up two hours before all the flights that were conducted over Stordalen Mire. In a subsequent step, based on the same four hours time

series the noise characteristics of the analyzers were assessed using Allan deviation plots (Allan, 1987), to specify the optimum averaging time needed to reduce the measurement noise and simultaneously avoid drift contamination (Kunz et al., 2018). The minimum Allan deviation was observed at about 250 s and 32 s for CO₂ and CH₄, respectively (see Fig. 1). Since the CH₄ measurements of the Aeris Strato contained nonlinear drifts, we have used 10 s averaging time for both analyzers. Based on the test results, for 10 s averaging the Allan deviation of CH₄ is smaller than 0.25 ppb whereas it is smaller than 0.15 ppm for CO₂. To address the issue of non-linear fluctuations in the Aeris Strato signal, we conducted an additional test to quantify the uncertainties of both analyzers using a third gas analyzer (Licor Li-7810) with better temperature stabilization as a reference. For these experiments, both gas analyzers, i.e. the reference LI-7810 and one of the two units used on the UAV, were connected sequentially to a gas tank with known mole fractions of CH₄ (3059.21 ± 0.17 ppb) and CO₂ (552.98 ± 0.02 ppm). The test lasted for an hour, and 10 s averaged root mean square error (RMSE) and mean absolute error (MAE) were calculated as shown in Eqs. 1 and 2:

$$\text{RMSE} = \sqrt{\frac{\sum_{n=1}^N (\text{CH}_{4,r} - \text{CH}_{4,d})^2}{N}} \quad (1)$$

$$\text{MAE} = \frac{\sum_{n=1}^N (\text{CH}_{4,r} - \text{CH}_{4,d})}{N} \quad (2)$$

Here subscripts r and d denote the reference analyzer (i.e. LI-7810) or UAV (LI-850 for CO₂ and Aeris Strato for CH₄) after correcting for the mean mole fraction offsets between the analyzers (see Fig. 2). Compared to the reference gas analyzer, the Strato analyzer showed relatively high RMSE and MAE, with the average RMSE at 1.22 ppb and the average MAE of CH₄ being almost zero, but with a standard deviation of 1.21 ppb. For the LI-850, the uncertainties in CO₂ were found comparable with those of the reference gas analyzer (Fig. 2), with average RMSE of 0.36 ppm and average MAE of CO₂ being almost zero, but with a standard deviation of 0.20 ppm. Overall, specified uncertainties in CH₄ and CO₂ mole fractions were about ±1.2 ppb and ±0.36 ppm, respectively.

2.2 Field Site Descriptions

The first field tests of the UAV platform were conducted over the Jena-Experiment field site (50°57'00" N, 11°37'30" E), located north of Jena next to the Saale river in Eastern Germany. The Jena-Experiment has been the home of ongoing biodiversity research since 2002 (Weisser et al., 2017; Roscher et al., 2004). The core area of the experiment consists of several ~~20m-x-20m~~ 20 m x 20 m vegetation patches and hosts 60 different plant species. The study area for our UAV campaigns at this site is fairly flat, covering approximately ~~400m-x-300m~~ 400 m x 300 m, surrounded by trees along the edges. The average annual precipitation is 587 mm, and the mean annual air temperature is 9.3 °C (Roscher et al., 2004).

To test our UAV system in a natural, heterogeneous ecosystem similar to our primary research target (i.e., the Arctic) we have conducted several flights over one of the most heavily investigated areas within the Arctic circle: Stordalen Mire, a subarctic permafrost peatland in northern Sweden (68°21'N, 19°02'E), underlain by discontinuous permafrost (Bäckstrand et al., 2010) and showing a substantial small scale heterogeneity in terms of soil moisture and vegetation types (Bäckstrand et al., 2010).

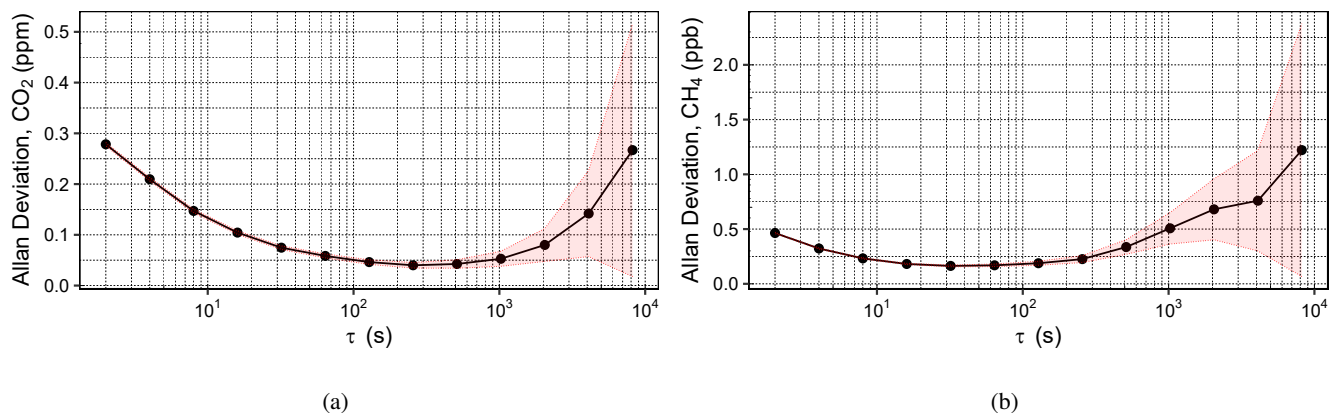


Figure 1. Allan deviation plots of (a) CO₂ and (b) CH₄. Here, τ is the sampling time in log-scale and shaded region represents the 95% confidence interval.

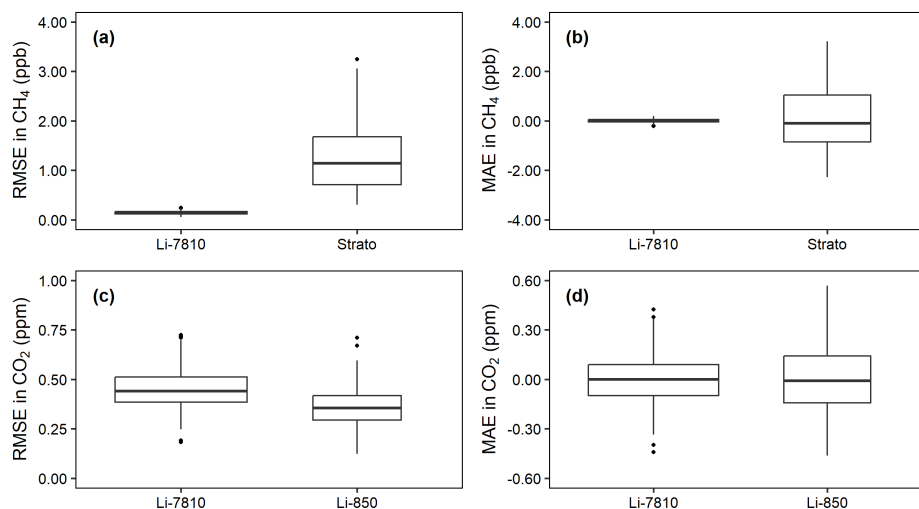


Figure 2. 10 s averaged root mean square error (RMSE) and mean absolute error (MAE) of CH₄ (a) and (b), and of CO₂ (c) and (d), respectively. Here the interquartile range is shown as the rectangle box and the median as the horizontal bar within that box. Solid circles are the potential outliers while the vertical lines represent the minimum and maximum values within the data.

The structure of this ecosystem offers a good opportunity to test the UAV platform’s capability of detecting the impact of small-scale surface variability on GHG signals in the lower atmosphere. The average annual air temperature and precipitation are -0.6 °C and 304 mm, respectively (Malmer et al., 2005). The mire generally experiences two main wind directions (NorthWest - SouthEast) (see Fig. C1) and it is covered by snow between November and April with a maximum depth of 55 cm (Malmer et al., 2005).

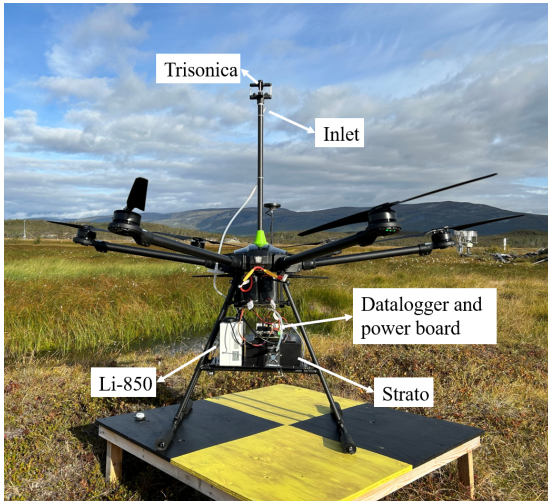
2.3 UAV Platform Characteristics and Configuration

130 The UAV platform in our experiments is a hexacopter that can fly for about 20 mins with a scientific payload of 4 kg (PM X6 Pro XL). The rotor-rotor distance is 1.29 m, and the propeller diameter is 55.9 cm. CubePilot Cube Orange is used as a flight controller (Copter 4.4.2), equipped with triple heated internal measurement units (IMUs) and two barometers (https://docs.px4.io/main/en/flight_controller/cubepilot_cube_orange.html). The integrated sensors of flight controller, i.e. gyroscopes and accelerometers, log the motion of the UAV including roll, pitch, yaw, and accelerations in 3-axis which subsequently can
135 be used to correct the wind speed measured by the anemometer. In addition to the GPS unit, a ground-pointing LIDAR is used to increase the vertical stability of the UAV.

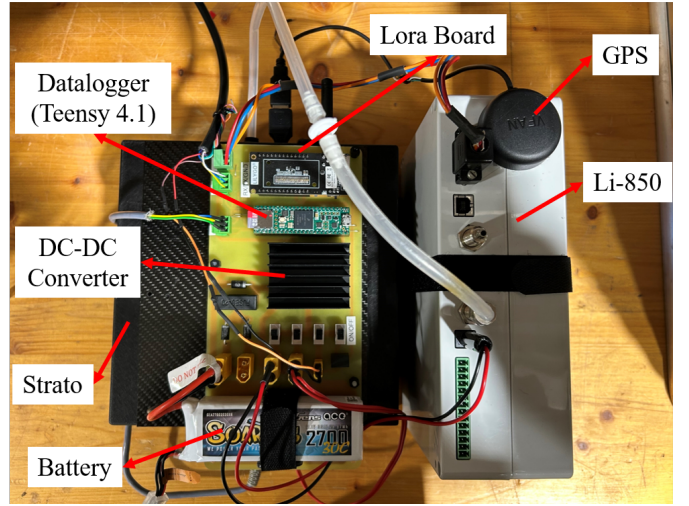
The scientific payload of this UAV platform (see Fig. 3a) includes a 2-D anemometer (Trisonica Mini, LI-COR Environment, USA) that measures the wind speed, air temperature, humidity, and pressure. The anemometer is placed 0.65 m above the rotor plane to avoid propeller downwash contaminating the anemometer measurement. This setup was previously found to
140 provide satisfactory results (Palomaki et al., 2017; Shimura et al., 2018; Donnell et al., 2018; Thielicke et al., 2021; Bolek and Testik, 2022). [However, measuring wind characteristics with an anemometer mounted on a UAV still remains a challenge, and compromises need to be made between potential bias due to propellers and the flight stability. We decided to place the anemometer about 1.2D above the rotor plane for best system performance \(the potential uncertainty sources and more information can be found in Yong et al. \(2024\)\).](#) The platform is instrumented with two gas analyzers to measure CO₂
145 (Licor Li-850, LI-COR Environment, USA) and CH₄ (Aeris Strato, Aeris Technologies) mole fractions, with both analyzers placed below the rotor planes. The internal pump of the Licor analyzer is removed to connect both analyzers sequentially, and the inlet of the tubing that leads sample air to both units is placed next to the anemometer. A custom-built data logger and power distribution board (see Fig. 3b) log onboard sensor data and provide power for the entire scientific payload. All data is synchronized at a frequency of 2 Hz including secondary GPS data. [Due to a frequency deviation issue \(i.e., jitter\) with the Strato analyzer, the collected data were slightly off from the intended 2 Hz \(~1.99 Hz\). Therefore, we aggregated all data including UAV movement \(translational and rotational motion data\), gas analyzers, and anemometer data to 1 s during data post-processing step. Additionally, the time lag associated with the inlet tubing length \(about 1 s\) was also compensated in a post-processing step.](#) Selected data (wind speed, wind direction, and GHG mole fractions) can be
150 transferred to the ground control station using a LoRa (Long Range radio communication) board, facilitating real-time data transmission while flying. Table 1 shows the specifications of the scientific payloads deployed on the UAV. The total take-off mass of the platform is 16.6 kg.

Table 1. Characteristics of the scientific payload.

Instrument	Measurement	Sensitivity	Weight (kg)	Power Cons. (W)
Aeris-Strato	CH ₄	< 1 ppb	1.8	15
Licor Li-850	CO ₂	< 0.1 ppm	1.2	5
Trisonica Mini	2-D Wind, T, P, Rh	-	0.05	0.32



(a)



(b)

Figure 3. Instrumented UAV platform (a), and close-up picture of the scientific payload (b).

2.4 Data Processing

Data collected by the UAV platform was pre-processed to correct or remove low-quality data [related to sporadic spikes in CO₂ data](#). The Trisonica mini was set up to provide 3D wind information; however, the anemometer cannot resolve elevation angles higher than 15°. In addition, vertical wind speed is prone to biases due to disturbances caused by the propeller downwash. Therefore, we only used 2D wind speed for further analyses. The wind speed measured by the anemometer on the UAV platform was subjected to disturbances due to translational and rotational (i.e., roll, pitch, and yaw) motions of the UAV. To compensate for these motions, we followed the direct correction methods, outlined by Donnell et al. (2018). Here, the heading of the UAV was kept constant during operation (i.e., no changes in yaw), and the anemometer North was aligned with the UAV's heading. Briefly, we first separated the 3D wind vector into components (u , v , and w) using wind speed (WS), direction (WD), and elevation angles. Similarly, the UAV's movement along 3D axes was also calculated from the measured GPS speed, and yaw angles. To compensate the rotational effects, the perturbations (r_θ , r_ψ) due to UAV motions were calculated as follows;

$$r_\theta = \left(\frac{\theta_i - \theta_{i-1}}{\frac{1}{f}} \right) * r \quad (3)$$

$$r_\psi = \left(\frac{\psi_i - \psi_{i-1}}{\frac{1}{f}} \right) * r \quad (4)$$

Here, θ , and ψ represent roll and pitch, respectively, r is the distance between the rotor plane and the anemometer (65 cm), and f is the sampling frequency of the IMU (Internal Measurement Unit) of the UAV. The true wind speed was obtained

from the raw wind speed (u_{raw} , v_{raw} , and w_{raw}) measured by the anemometer in combination with rotational and translational velocities (u_{gps} , v_{gps} , and w_{gps}) of the UAV as shown in Eqs. 5 and 6 below. It should be noted that opposite sign conventions were adopted for the velocities of the anemometer and UAV.

$$175 \quad u = (u_{\text{raw}} + r_{\theta} - u_{\text{gps}}) * \cos(\theta_i) - (w_{\text{raw}} + w_{\text{gps}}) * \sin(\theta_i) \quad (5)$$

$$v = (v_{\text{raw}} + r_{\psi} - v_{\text{gps}}) * \cos(\psi_i) - (w_{\text{raw}} + w_{\text{gps}}) * \sin(\psi_i) \quad (6)$$

Using the yaw angle of the UAV, we aligned the heading of the UAV to true north by rotating the coordinate system:

$$u_{\text{rot}} = u * \cos(\alpha) + v * \sin(\alpha) \quad (7)$$

180

$$v_{\text{rot}} = -u * \sin(\alpha) + v * \cos(\alpha) \quad (8)$$

Here, u_{rot} and v_{rot} are the rotated wind components and α is the difference between the UAV yaw angle and true north. Finally, 2D wind speed (WS) and true wind direction (WD) were calculated as:

$$WS = \sqrt{u_{\text{rot}}^2 + v_{\text{rot}}^2} \quad (9)$$

185

$$WD = \text{atan2}(v_{\text{rot}}, u_{\text{rot}}) \quad (10)$$

To remove potential offsets in the calibration of the analyzers (see Section 3+2.1), we sampled [high and low, resp.](#), calibration gases with known CO₂ and CH₄ mole fractions (~~350-ppm-and-550~~ [341.19±0.01 ppm and 543.1±0.01 ppm](#), and ~~1700-ppb-and-3000~~ [1722.0±0.1 ppb and 2990.3±0.1 ppb](#), respectively) before and after each flight day for about 2 to 5 minutes. [These gas cylinders were calibrated following WMO calibration scales \(WMO CO2 X2019, WMO CH4 X2014A\) through a set of standards that were calibrated by NOAA \(for more information see Heimann et al. \(2022\)\).](#) Note that, only the last 1-2 mins of sampling were used for the calibration process to allow the analyzers cells to be flushed for the first couple of minutes to reach the equilibrium. Observed offsets to the target mole fractions were compensated during the data processing step using simple linear interpolation. Additionally, the CO₂ data were subjected to filtering due to observed sporadic spikes during some flights. We first employed hard thresholds that omitted CO₂ mole fractions below 380 ppm and above 460 ppm, respectively. [These plausibility limits were derived from long-term observations of the nearby ICOS tower CO₂ measurements.](#) In addition, CO₂ data were omitted when the absolute difference between sequential CO₂ data was higher than 2 ppm or equal to zero. After eliminating implausible data this way, we applied the despiking algorithm from the RFlux package in R (Vitale et al., 2020) with the default scale parameter and 1-minute window width. The despiking algorithm uses a repeated median filter within the selected window length to find the low-frequency part (μ_t) of the time series and replaces the detected spikes with μ_t (see (Vitale, 2021) for further details).

190

195

200

2.5 Flight Strategies

This study compiles data collected by our UAV platform over the Jena-Experiment and Stordalen Mire, i.e. from a total of 40 independent flights and a combined flight time of about 12 hours. Over these deployments, two distinct flight strategies were tested, namely grid surveys and vertical profile flight.

The grid survey flights were used to qualitatively assess the signal variability over the heterogeneous landscape of Stordalen Mire. Here, our UAV platform was programmed to fly at a constant speed following a pre-defined horizontal grid pattern. The grid surveys started with transects oriented along the east-to-west direction and were subsequently followed by north-to-south legs so that the same locations were sampled twice at two different times at transect intersections. ~~Flight tracks of each survey flight are shown in Fig. 5, with measurement locations marked as black solid circles.~~ The distance between each of these black circles is approximately 2 m based on the sampling frequency of 2 Hz, and the flight speed of 4 m s⁻¹.

The vertical profile flights were conducted to observe vertical gradients of atmospheric conditions within the lowest part of the boundary layer and quantify the fluxes using the profile method, described in detail in the next subsection. These flights consisted of multiple waypoints along the z-direction, at which the UAV platform was programmed to hover for 40 or 60 seconds depending on the pre-defined maximum altitude. The vertical resolution of the flight was set to 2.5 m up to a height of 15 m AGL, between 15 to 30 m AGL it was 5 m, and from 30 to 110 m AGL it was 10 m. The starting altitude of the vertical profile flights over the area were set to 5 m AGL (see Fig. 5).

2.6 Flux Quantification using Profile Method

This section describes a quantification method (i.e., profile method) that was used to calculate the CO₂ and CH₄ fluxes based on vertical profile data. In essence, the approach is an application of the flux-gradient method (Xiao et al., 2014; Zhao et al., 2019; You et al., 2021) to UAV-based data. In the flux gradient method, turbulent transport is comparable to molecular diffusion, allowing vertical fluxes to be approximated as the product of the vertical gradient of GHG mole fractions and the eddy diffusivity (Baldocchi et al., 1988). One of the main advantages of using the profile method in UAV-based calculations is the comparatively short required sampling time, since only mean values of the mole fractions are needed. Firstly, a logarithmic curve was fitted to the vertical mean wind profile as given in Eq. 11 (Foken, 2017; Tagesson, 2012):

$$\overline{WS(z)} = \frac{u_*}{\kappa} \ln \frac{z}{z_0} \quad (11)$$

where κ is the von Karman constant [-] that is equal to 0.4, z is the measurement height [m AGL], and z_0 is the roughness length [m]. Eq. 11 can be rewritten as

$$\overline{WS(z)} = a \ln(z) + b \quad (12)$$

230 where a is the slope of the logarithmic curve fitting defined as u_*/κ , and b is the intercept. Based on Eq. 12, u_* [m s^{-1}] can be estimated using the slope of the logarithmic fittings to the wind speed profiles. Under the assumption of neutral stability and estimation of u_* , the eddy diffusivity (K_{ed}) can be derived as given in Eq. 13 (Zhao et al., 2019):

$$K_{\text{ed}} = \kappa u_* z_g \quad (13)$$

235 where z_g is the geometric mean of the two altitudes (z_1 and z_2) between which the flux is being considered. To calculate K_{ed} and the fluxes, we used the lowest two altitudes of our UAV-based vertical profile measurements (i.e., $z_1 = 5$ and $z_2 = 7.5$ m). The reason for this is that near the surface, fluxes are expected to be influenced only by local emissions (i.e. smaller footprint area), while at higher altitudes signals from different sources/sinks over the landscape may affect the measurements (i.e. larger footprint area), complicating the interpretation of the results. Using K_{ed} the fluxes (F) of CO_2 and CH_4 can be estimated as given in Eq. 14 (You et al., 2021).

$$240 \quad F = -K_{\text{ed}} \frac{\chi_1 - \chi_2}{z_1 - z_2} \quad (14)$$

$$\chi = \frac{\bar{P}\bar{M}\bar{C}}{R\bar{T}} \quad (15)$$

In Eq. 15, χ_1, χ_2 are the measured mass concentrations of CO_2 [gCO_2] or CH_4 [gCH_4], respectively, at 5 and 7.5 m (Gålfalk et al., 2021). Here, \bar{P} is averaged pressure [Pa], \bar{C} is measured averaged mole fractions of CO_2 or CH_4 at each altitude [ppm], M is molar mass [g mol^{-1}] with 44.01 for CO_2 and 16.03 for CH_4 , R is the universal gas constant equal to 8.314 [J K^{-1}]
245 mol^{-1}], and \bar{T} the averaged temperature [K]. The negative sign is introduced as a convention so positive fluxes are emissions from the ecosystem to the atmosphere, and negative fluxes signify uptake. The uncertainty of the flux calculations and friction velocity estimations were performed using Monte Carlo simulations with a probability level of the coverage interval of 0.95 (i.e. Monte Carlo trials of 20000) (Veen and Cox, 2021). To perform the Monte Carlo simulations, we first generated normally distributed synthetic data for wind speed and mass concentrations of CH_4 and CO_2 based on the measured means and standard
250 deviations at each altitude. These generated synthetic data were then used to estimate the uncertainties of the friction velocities as well as the fluxes of CO_2 (F_{CO_2}) and CH_4 (F_{CH_4}) (for more details please see Veen and Cox (2021)).

3 Results and Discussion

~~3.1 Laboratory Tests of Gas Analyzers~~

~~The Licor Li-850 and Aeris Strato gas analyzers used to measure the atmospheric and mole fractions were subjected to several tests under a controlled environment. First, a standard
255 air mixture of known mole fractions was sampled by both analyzers for approximately four hours to quantify the signal stability over time. It was observed that measurements of the Li-850 were subject to a nearly linear drift over time, whereas measurements by the Aeris Strato analyzer partly displayed non-linear fluctuations (see Fig. A1) for around the~~

260 first two hours. The signal stabilizes two hours after powering up and hence the Strato analyzer was powered up two hours before all the flights that were conducted over Stordalen Mire. In a subsequent step, based on the same four hours time series the noise characteristics of the analyzers were assessed using Allan deviation plots (Allan, 1987), to specify the optimum averaging time needed to reduce the measurement noise and simultaneously avoid drift contamination (Kunz et al., 2018). The minimum Allan deviation was observed at about 250 s and 32 s for and , respectively (see Fig. 1). Since the measurements of the Aeris Strato contained nonlinear drifts, we have used 10 s averaging time for both analyzers. Based on the test results, for 10 s averaging the Allan deviation of is smaller than 0.25 ppb whereas it is smaller than 0.15 ppm for . To address the issue of non-linear fluctuations in the Aeris Strato signal, we conducted an additional test to quantify the uncertainties of both analyzers using a third gas analyzer (Licor Li-7810) with better temperature stabilization as a reference. For these experiments, both gas analyzers, i.e. the reference LI-7810 and one of the two units used on the UAV, were connected sequentially to a gas tank with known mole fractions of $(3059.21 \pm 0.17 \text{ ppb})$ and $(552.98 \pm 0.02 \text{ ppm})$. The test lasted for an hour, and 10 s averaged root-mean-square error (RMSE) and mean absolute error (MAE) were calculated as shown in Eqs. 1 and 2:

$$\text{RMSE} = \sqrt{\frac{\sum_{n=1}^N (CH_{4,r} - CH_{4,d})^2}{N}}$$

$$\text{MAE} = \frac{\sum_{n=1}^N (CH_{4,r} - CH_{4,d})}{N}$$

270 Here subscripts r and d denote the reference analyzer (i.e. LI-7810) or UAV (Li-850 for and Aeris Strato for) after correcting for the mean mole fraction offsets between the analyzers (see Fig. 2). Compared to the reference gas analyzer, the Strato analyzer showed relatively high RMSE and MAE, with the average RMSE at 1.22 ppb and the average MAE of being almost zero, but with a standard deviation of 1.21 ppb. For the LI-850, the uncertainties in were found comparable with those of the reference gas analyzer (Fig. 2), with average RMSE of 0.36 ppm and average MAE of being almost zero, but with a standard deviation of 0.20 ppm. Overall, specified uncertainties in and mole fractions were about $\pm 1.2 \text{ ppb}$ and $\pm 0.36 \text{ ppm}$, respectively.

275 Allan deviation plots of (a) CO_2 and (b) CH_4 . Here, τ is the sampling time in log scale and shaded region represents the 95% confidence interval. 10 s averaged root-mean-square error (RMSE) and mean absolute error (MAE) of CH_4 (a) and (b), and of CO_2 (c) and (d), respectively. Here the interquartile range is shown as the rectangle box and the median as the horizontal bar within that box. Solid circles are the potential outliers while the vertical lines represent the minimum and maximum values within the data.

3.1 Flights over the Jena-Experiment

280 Over the Jena-Experiment site, we conducted test flights to evaluate the instruments within our scientific payload against tower-based eddy covariance reference measurements. For these test flights, a different calibration gas sampling procedure compared to the one explained in Sect. 2.3 2.4 was applied. The field experiment was conducted on 14/07/2023 and the data were compared with observations from a 2 m high local tower, which was placed temporarily, instrumented with a 2D anemometer and a Licor Li-850 analyzer.

285 Fig. 4 shows the comparison of wind speed, CO_2 , and H_2O concentrations between UAV and tower datasets. The flight lasted about 21 mins, and the UAV was hovering at 10 m high above the ground level during the entire flight. The reason for not hovering closer to the ground, ideally the same height as the tower, is due to the surrounding trees and fences near the tower location which prevent conducting safe UAV flights at lower altitudes. As there was no additional stationary CH_4 analyzer, the comparison does not include CH_4 . A calibration gas mixture was sampled from a gas cylinder to quantify the offset between the CO_2 analyzers after the flight; no calibrations were performed beforehand. The tank was sampled for 14 mins, and the average

Table 2. Flight details over Stordalen Mire.

Flight Type	Date	Start Time (UTC)	End Time (UTC)	Location	Area (m ²)	Flight Speed (m s ⁻¹)	Altitude (m)
Vertical Profile	07/09/2023	15:29:09	15:42:31	—	—	2	5 - 50
Vertical Profile	08/09/2023	10:12:10	10:25:25	—	—	2	5 - 50
Vertical Profile	09/09/2023	09:22:13	09:34:50	—	—	2	5 - 110
Vertical Profile	15/09/2023	06:42:57	06:50:20	—	—	2	5 - 50
Grid Survey	11/09/2023	08:19:40	08:34:20	Area 1	~15k	4	10
Grid Survey	11/09/2023	08:49:15	09:03:25	Area 2	~15k	4	10
Grid Survey	11/09/2023	09:24:08	09:37:40	Area 3	~12.5k	4	10
Grid Survey	13/09/2023	07:11:00	07:24:59	Area 1	~15k	4	10
Grid Survey	13/09/2023	07:36:30	07:50:36	Area 2	~15k	4	10
Grid Survey	14/09/2023	09:13:40	09:27:00	Area 3	~12.5k	4	10

290 offset was corrected for in the subsequent analyses. Overall, good agreement between UAV and tower was observed with a correlation coefficient (r) higher than 0.6 for all measured variables. During the flight, the mean difference between the CO₂ concentrations was 3.34 ± 0.91 ppm. A large fraction of this difference can be attributed to vertical concentration gradients within the atmospheric boundary layer (see e.g. reference vertical profiles between 2.5 and 10 m from the meteorological tower of the Lindenberg observatory in Germany in Fig. B1). Another factor influencing the comparison of CO₂ signals is that CO₂ 295 mixing ratios were not converted to dry-air mole fraction here for both tower- and UAV-based gas analyzers. It should be noted that in the rest of this manuscript, CO₂ mixing ratios are reported as dry-air mole fraction. Due to the short measurement time, fluctuations of atmospheric moisture can be neglected, but vertical gradients in H₂O levels may lead to minor absolute offsets between signals from both analyzers. Furthermore, the fact that the local tower is below the canopy height (due to technical limitations) might also affect the observed gradient. For the wind speed comparison between tower and UAV, we found a high 300 correlation coefficient of 0.639 even though the wind speed correction procedure could not be performed due to the lack of elevation angle data in the data logger. The highest correlation between tower and UAV ($r=0.709$) was observed for the H₂O measurements.

3.2 Grid flights over Stordalen Mire

Several grid survey flights were conducted over Stordalen Mire in the period 11. to 14. of September 2023, with the main focus 305 to identify potential hot spots in atmospheric GHG mole fractions and quantify the signal variations over the areas of interest. Three different target areas were defined using the vegetation map from Varner et al. (2022): two of them, labelled as Area 1 and Area 2 in the following, were classified as bog and fen, respectively, and thus featured mostly wet surfaces. The third domain, Area 3, was mostly dry and was classified as a palsa mire (see Fig. 5). Each of these areas was surveyed two times. All grid survey flights were conducted at an altitude of 10 m AGL, and each flight lasted about 14 minutes. Sampling within 310 each grid survey was interrupted for about 15 to 20 minutes to prepare the UAV platform for the second flight leg. The only

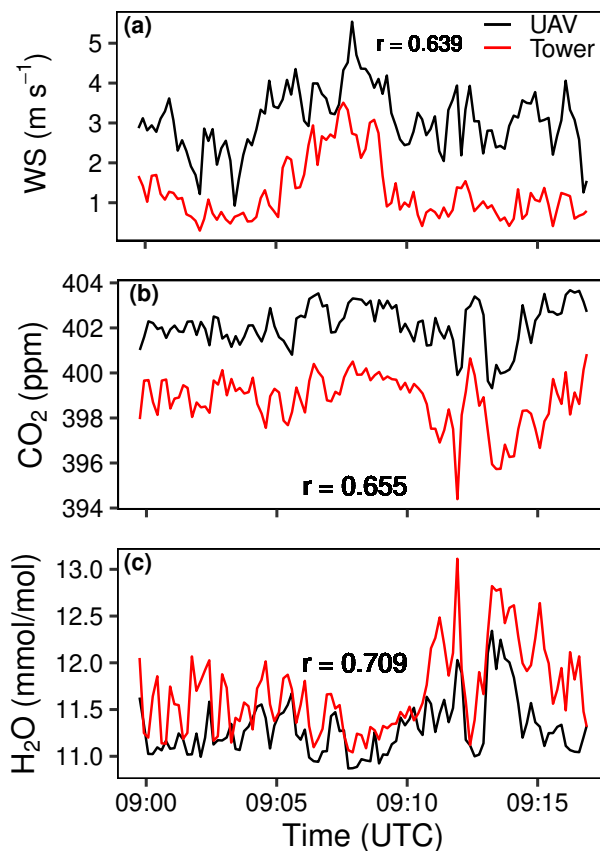


Figure 4. 10-s averaged time series of (a) Wind Speed, (b) CO₂, and (c) H₂O illustrated by black line for UAV and red line for tower measurements. Here, r represents the correlation coefficient between the tower and UAV.

exception to this was the second survey over Area 3, for which due to bad weather conditions the second part of the survey needed to be postponed to the following day (see also details of the grid survey flights in Table 2). All survey grid data were subjected to a filtering process to remove observed sporadic spikes in CO₂ data as was described in Sec. 2.3.2.4.

The mole fractions of CH₄ over Areas 1 and 2 were found to be higher than those over Area 3 for both flight days (see Fig. 6).
 315 This can most likely be attributed to higher methane emissions, indirectly corroborated by higher water availability, previously identified as one of the main drivers of CH₄ emissions (Kwon et al., 2022). From the land cover map used within this study (Fig. 65), we estimated that about 70 - 75% of both Area 1 and Area 2 were either bog or fen, while the fraction of these classes was estimated at only about 30% for Area 3. Furthermore, we found the variability of the measured CH₄ mole fractions to be highest over Area 3 (average 35.4 ppb), compared to an average 22.9 and 28.5 ppb for Area 1 and Area 2, respectively. (see
 320 Fig. 6).

Opposed to our findings, Scheller et al. (2022) found smaller variability of CH₄ over dry tundra compared to Fen areas. This might be due to the different measurement heights of the two studies: here the measurement height was 10 m, while in Scheller

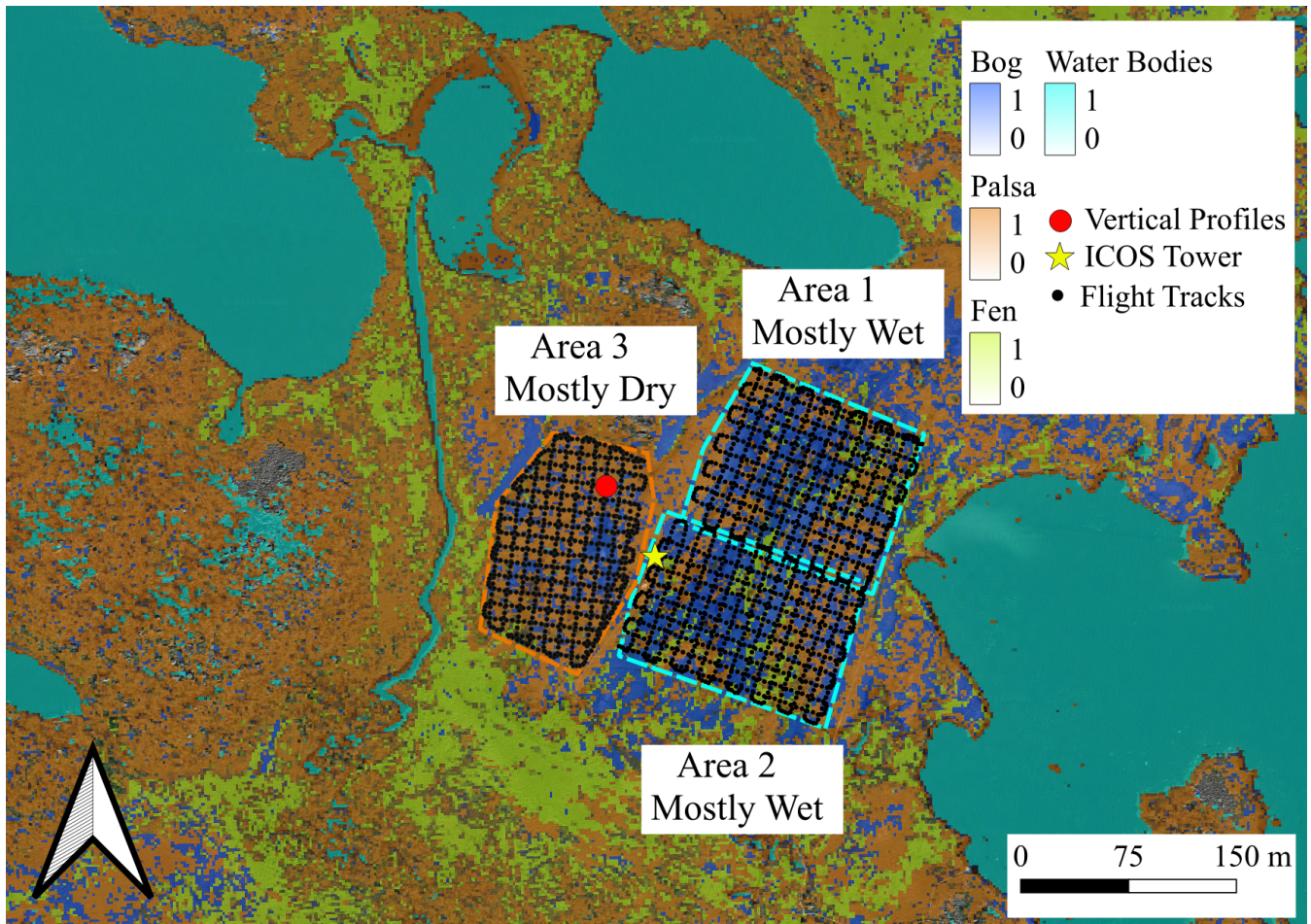


Figure 5. Overview of conducted flights in Stordalen. Flight tracks of grid surveys over three different areas. Here, the landcover map (Varner et al., 2022) shows the vegetation distribution and the border of areas was represented by dashed lines (blue for wet, orange for dry). Flight tracks are indicated with black solid circles. The location of the Vertical profiles was illustrated with a red circle whereas the location of the ICOS tower was depicted with a star.

et al. (2022) it was about 0.3 m. Additionally, although Area 3 was specified as mostly dry, it still comprises small patches of fens and bogs. Since the measurements over Area 3 were conducted on a different date than those for Areas 1 and 2, the observed variations may also be linked to different environmental conditions; however, the measured CO₂ mole fractions were also higher over Areas 1 and 2, compared to Area 3. Furthermore, the variations of CO₂ over Areas 1 and 2 were found about 6 ppm whereas it was about 4.8 ppm over Area 3. Overall, our UAV-based observations over Stordalen Mire demonstrate that the spatial variability in CO₂ and CH₄ mole fractions can be high even over small spatial scales. This implies that measurements made by stationary EC towers may be subject to substantial location biases in complex environments such as Arctic wetlands.

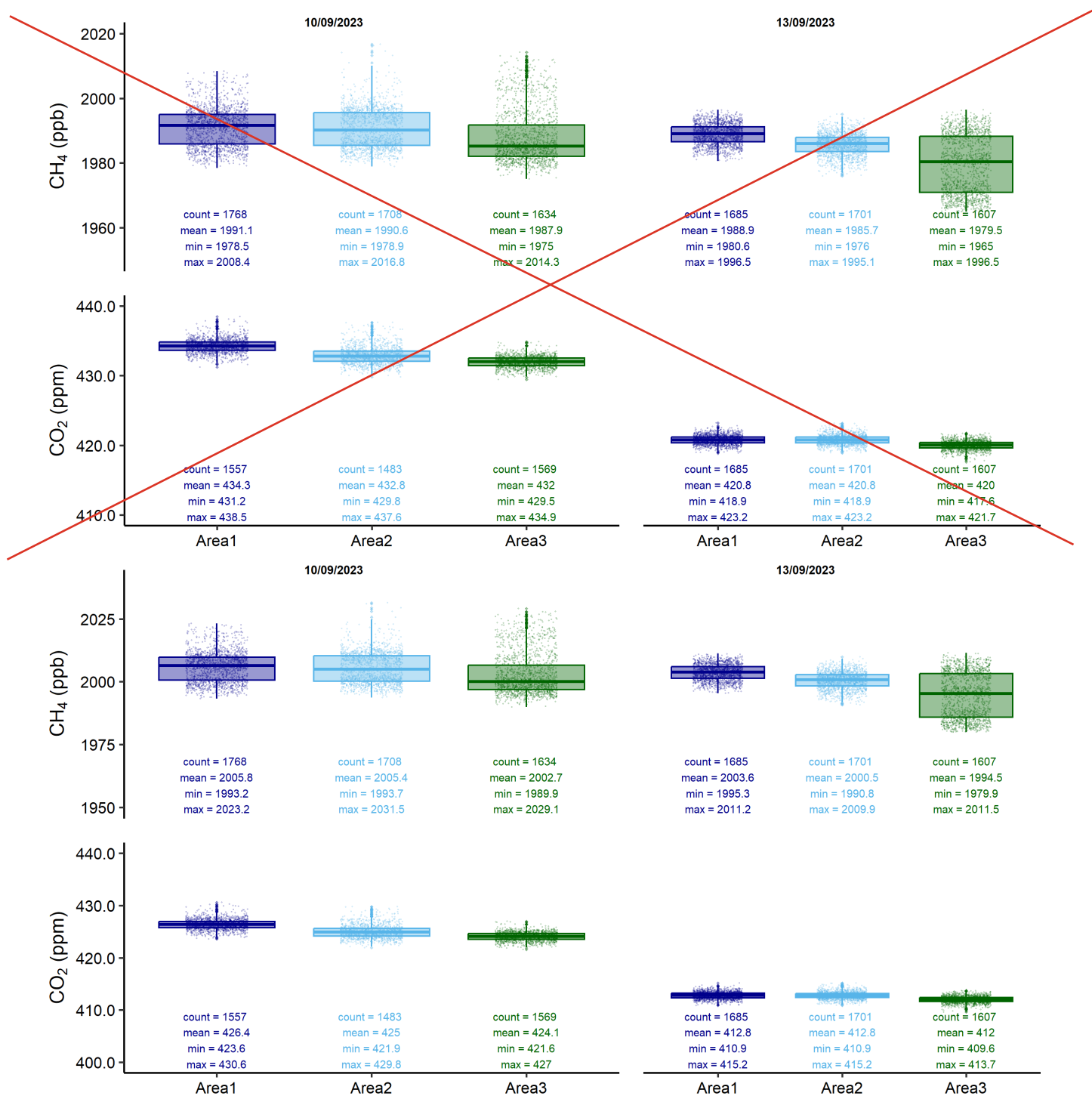


Figure 6. CH₄ and CO₂ mole fractions measured by UAV from the grid survey flights on 11/09 and 13/09/2023. The measured data points (2 Hz) were shown while the outliers were represented as diamonds. Basic statistics including the number of data points as count, mean, min, and max values were denoted underneath each corresponding box plot.

330 The grid survey data were spatially averaged into 10 grid cells each in latitude and longitude direction, which resulted in a grid with a spatial resolution of about 15-20 m. Bins with less than 20 data points were excluded from further analysis. We then interpolated the spatially averaged data using the Ordinary Kriging algorithm (Pereira et al., 2022) to facilitate a visual overview of the mole fraction distribution over the study areas (see Fig. 7). In this context, best-fitted model variograms were selected based on the RMSE and coefficient of determination (R^2). Using interpolated maps, potential hotspots could be identified. 335 Respective areas are enclosed by black dashed lines in Figure 7. Potential hotspot areas were identified by first locating the 95 percentile of mole fractions over each flight area and flight day, subsequently the locations with matching hotspots for both survey days were identified on the map. Overall, the gridded datasets showed a range in CH_4 mole fractions of up to 25 ppb for a single measurement period across the three target sites, while this range was 6 ppm for CO_2 mole fractions. Considering the rather small size of the study domain, this level of variability emphasizes the heterogeneity of ecosystem characteristics and 340 corresponding carbon cycle processes within structured wetlands and highlights the value of survey flight data as presented within this study.

Over Area 3, the eastern part of the domain showed particularly high CH_4 mole fractions on both days. These areas are close to Areas 1 and 2, and it is therefore possible that a signal that originated either in Area 1 or Area 2 might be picked up by UAV platform while flying over Area 3 due to horizontal advection. At the same time, enhanced CH_4 may also be correlated with 345 the distribution of wet microsites within Area 3. Spatial variability within the CH_4 and CO_2 mole fraction fields at such small scales, as shown in these horizontal maps, are very challenging to detect with conventional stationary measuring methods. The frequency distribution of observed mole fractions within all three areas is illustrated in Fig. 8. Here, only data from the 11/09/2023 flights were selected, since all areas were sampled within the same day. The means of the mole fractions were ~~432.99~~ 425.12 ppm for CO_2 and ~~1989.93 ppb~~ 2004.62 ppb for CH_4 , with standard deviations of ~~1.06 ppm and 3.68~~ 1.07 ppm and 3.66 ppb, 350 respectively. Figure 8 emphasizes that the mole fractions over the significant section of the total area (about ~~36 and 27~~ 35 and 26% of CO_2 and CH_4 , respectively) do not overlap with the designated threshold (i.e. $\mu \pm \sigma$, where μ is the mean, and σ is the standard deviation) which again highlights the pronounced signal variability over heterogeneous landscapes. Therefore, we recommend combining maps as these with eddy tower and chamber data to improve the interpretation of observational studies over complex ecosystems, and to minimize potential representativeness errors which would e.g. affect modelling frameworks 355 that are trained with such datasets.

3.3 Vertical profile flights over Stordalen Mire

Apart from the grid survey flights, vertical profile flights were conducted between 07-09/09 and 15/09/2023, covering elevations of up to 110 m above the ground level (see Table 2). Only the ascending profile was used in our analysis to avoid sampling an air column disturbed by the rotor downwash. The lowest part of the boundary layer profile was created by averaging every 360 10 s aggregated block at each altitude (see Fig. 9). The two main wind directions (NorthWest - SouthEast) (see Fig. C1) were also captured with the vertical profiles as East-SouthEast (08/09 and 15/09) and West-NorthWest (07/09 and 09/09). CO_2 mole fractions show a mostly well-mixed behaviour, except for the profile observed on 08/09 where lower CO_2 mole fractions are observed at the mid altitudes, between approximately 15 and 35 meters. Measured vertical profiles presented here are

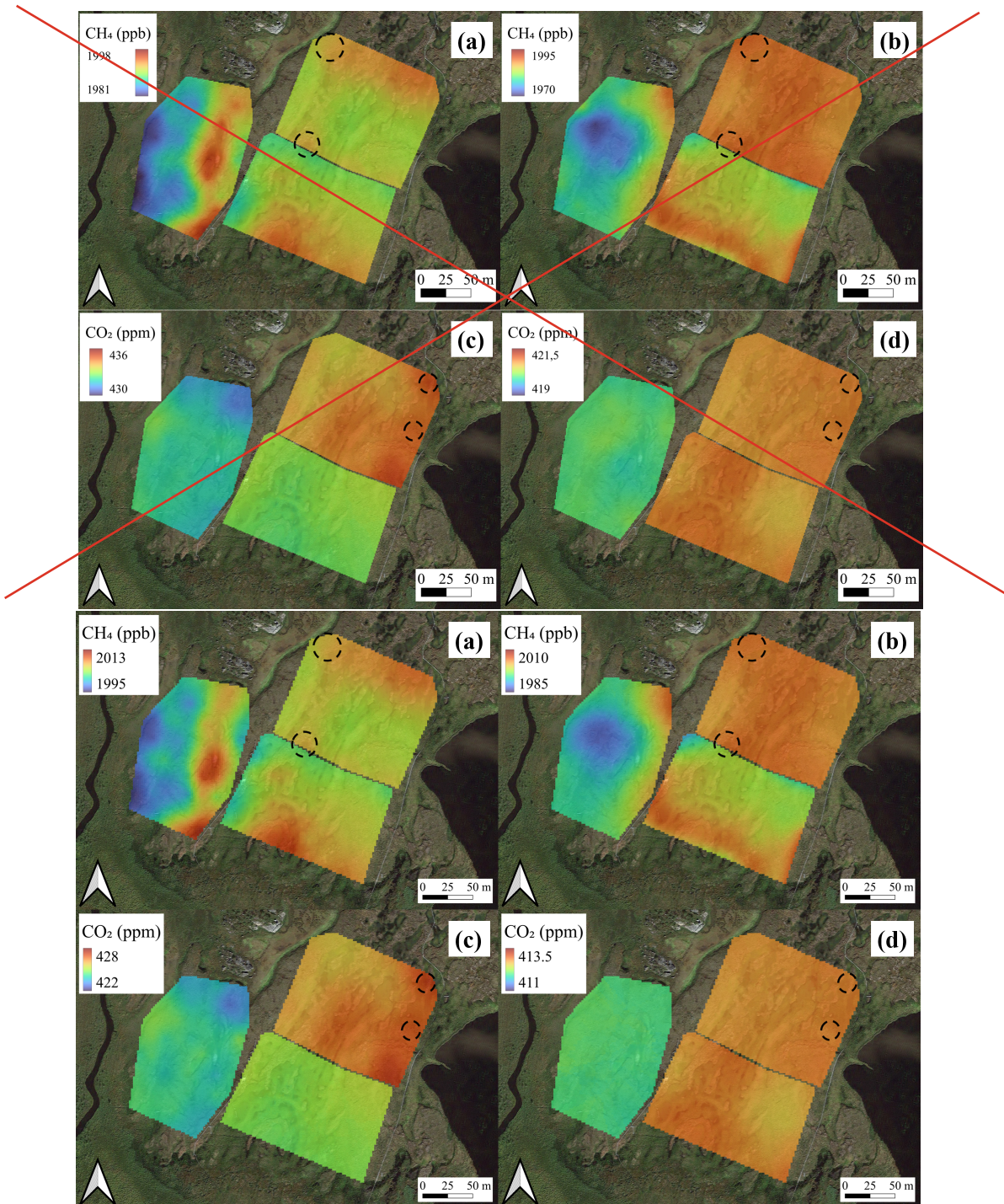


Figure 7. Interpolated CH_4 and CO_2 mole fractions, (overlaid on satellite image from © Google Maps), using Kriging algorithm of the grid surveys that were conducted on 11/09/2023 (a) and (b), and on 13-14/09/2023 (c) and (d). Note that, legends are different for each measurement day to highlight the potential hotspots. Here, color gradients from blue to red were used where blue colors represent low and red colors represent high mole fractions. Potential hotspots were enclosed by black dashed lines.

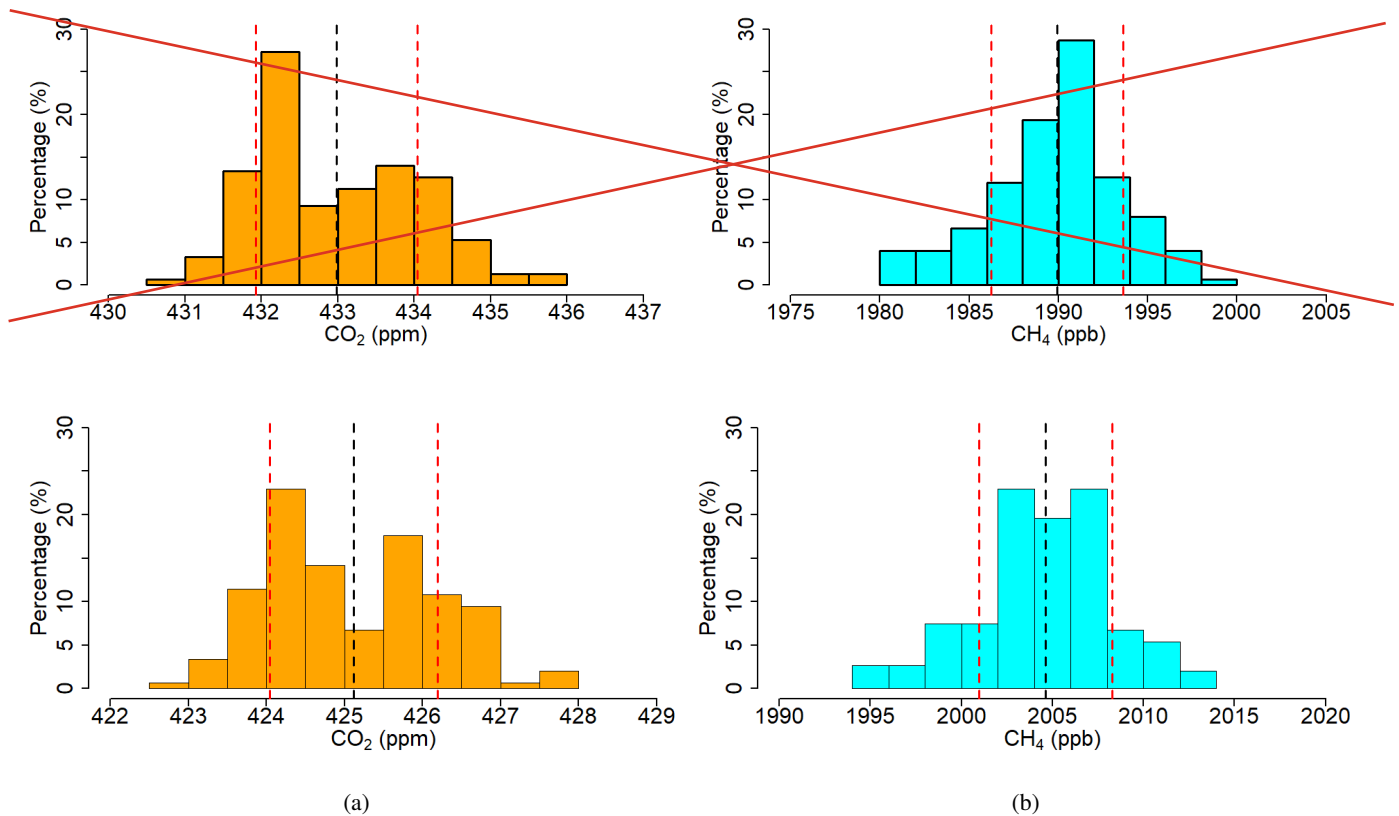


Figure 8. The distribution of spatially averaged CO₂ (a) and CH₄ (b) mole fractions of all three areas combined. Black dashed lines are the corresponding averages while the red dashed lines are the $\pm\sigma$, where σ is the standard deviation.

likely affected by an internal boundary layer (IBL), since the area is surrounded by lakes where the surface roughness is small compared to the heterogeneous surfaces around the measurement point, and energy fluxes likely carry different signatures. The formation of the IBL is evident on the profile of 08/09, where the most likely explanation of the observed profile is that the airflow first crossed the entire lake on the eastern side and was subsequently affected by the heterogeneous surface between the lake coast and the measurement location. In our vertical profile, the associated transition layer forms above 15 m AGL, where the wind speed decelerates due to smooth-to-rough transition demonstrated similar to (Krishnamurthy et al., 2023).

CH₄ mole fractions show high variations for all the profiles and generally are complex to interpret. Nevertheless, higher CH₄ enhancement is observed under easterly wind compared to the westerly. Although day-to-day variations might also play an important role, from the landcover map it is clear that the eastern side of the profile measurement point comprises a higher amount of wet areas suspected to be the source of CH₄. The lowest CH₄ mole fractions were recorded on the 07/09 profile, where the wind direction was $268.8 \pm 21.6^\circ$ (i.e., westerly wind) while higher mole fractions were observed when the wind direction was $108.6 \pm 14.4^\circ$ and $147.8 \pm 3.1^\circ$ (East-SouthEast) on the 08/09 and 15/09 profiles, respectively. The profile on 09/09 is more complex to interpret since the landscape changes back and forth from lake to land on the northwest side of the

measurement point. Considering the profile on 08/09 where an IBL formation was inferred, the CH₄ profile seems to be also affected by the IBL. The mid altitudes have the highest CH₄ mole fractions where the signals might be originating from the area between the measurement point and the lake on the eastern end from the land cover map (see Fig. 5) which is dominated
380 by fen or bogs. CH₄ mole fractions decrease at the higher altitudes (above the IBL) where the signal might be forming over the lake.

The quantification method as explained in Sec. 2.5 2.6 was applied here for all vertical profiles to constrain F_{CH₄} and F_{CO₂} (see Table 3). All conducted flights show CH₄ emissions, and the average emissions when the wind was blowing from the east side of the measurement location (~~52.03~~ 47.48 ± ~~80.68~~ 75.13 mgCH₄ m⁻² d⁻¹) was found to be higher compared to those
385 from the westerly directions (~~12.82~~ 15.62 ± ~~40.24~~ 39.59 mgCH₄ m⁻² d⁻¹). Higher CH₄ fluxes were also observed at the eastern side of the ICOS EC tower, compared to the western side (Łakomic et al., 2021), supporting our UAV-based observations. On the other hand, except for the 07/09 flight, all the flights show CO₂ uptake over the measuring location. Observed CO₂ emissions on 07/09 might be due to lower incoming shortwave radiation since the measurement was conducted in the late afternoon (around 17:30 local time). As a rough validation, we used ICOS EC tower data (SE-Sto) to calculate the F_{CH₄,TWR}
390 using the EC method due to the lack of F_{CH₄} data on ICOS portal. However, for the F_{CO₂,TWR} fluxes and u_{*,TWR} data from the ICOS portal was used (Lundin et al., 2024). Here, the calculations were done as close as possible to the sampling times of the vertical profiles using a 30-minute averaging time. For the profiles of 07/09 and 09/09, mean fluxes for a full hour are used, since the flight took place in the middle of two 30-minute datasets. Furthermore, the uncertainties of the tower-based F_{CH₄} were calculated following Mann and Lenschow (1994). Note that, the F_{CH₄} calculations here may lead to enhanced
395 uncertainties since limited data quality information was available. Still, this preliminary comparison with the EC tower shows acceptable qualitative agreement considering footprint differences between the UAV and ICOS EC tower which are affected by the spatial variability of the fluxes and the difference in measurement heights (i.e. effective measurement height of the UAV-based calculations is z_g which is 6.12 m whereas for ICOS EC tower it is 2.2 m). Although logarithmic fittings that were used to estimate the friction velocities are not perfect (average R² values were around 0.31, 0.57, 0.38, and 0.4 for 07/09, 08/09,
400 09/09, and 15/09, respectively), estimates were in acceptable range since at least 12 altitude levels were used to represent the vertical profiles and the variations can mostly be attributed to the deviations in the stability conditions from the neutral case. The relatively high uncertainties of the calculated fluxes ~~are relatively high~~ (see also Table 3) ~~are to the largest part~~
405 ~~due to the small vertical gradient of CO₂ and CH₄ between the chosen altitudes. In~~ relative to the combination of background signal variations and instrument drift. This can be seen e.g. from the panels in Fig. 9 where only the profile part z ≤ 10 m of the boundary layer was illustrated. In most cases observed in this study, the deviations in the signal are higher than the vertical gradient. Here, the assumption of neutral stability and logarithmic profile might also contribute to the observed high uncertainties. In principle, it would be better to select altitudes with a larger mole fraction difference in order to get a better-defined gradient (Tagesson, 2012), but since the vertical profiles are affected by IBL formation we avoided using higher altitudes. Ideally, setting the lowermost measurement altitude a bit closer to the ground at about 2 - 3 m and the second at
410 around 10 m would be preferable. Also, the measurements were conducted during the late growing season when the fluxes are expected to be small. As a consequence, even though this method for UAV-based quantification of local-scale flux rates

is promising, further research will be needed to reduce the uncertainties, e.g. by using different quantification methods and optimized flight strategies.

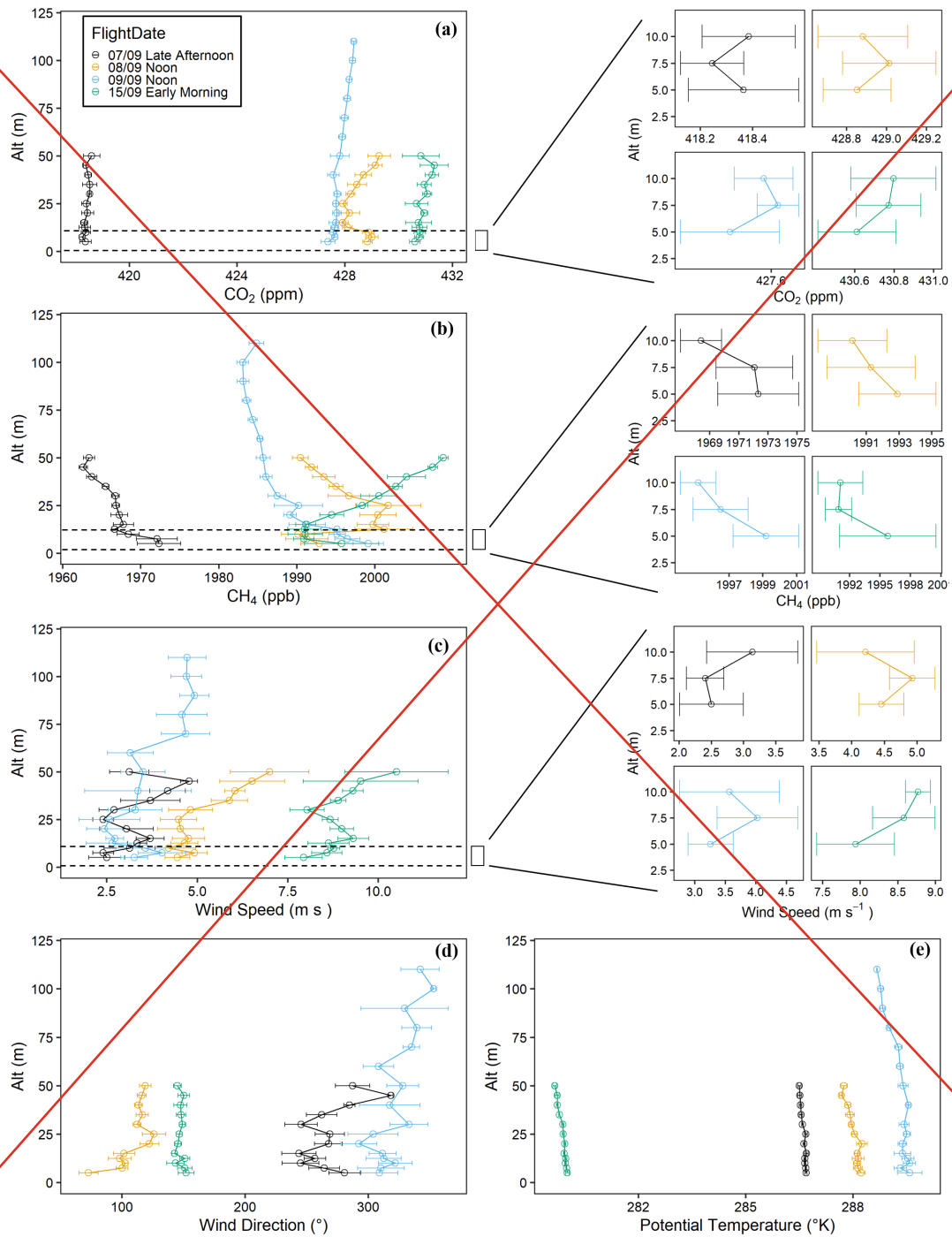
Table 3. Estimated friction velocities (u_*) and fluxes of CH_4 (F_{CH_4}) and CO_2 (F_{CO_2}) from the vertical profiles and corresponding uncertainties. Reference values ($u_{*,\text{Twr}}$) were derived using observations from the ICOS EC tower at Stordalen Mire.

Flight Date	u_* (m s^{-1})	$u_{*,\text{Twr}}$ (m s^{-1})	F_{CH_4} ($\text{mgCH}_4 \text{ m}^{-2} \text{ d}^{-1}$)	$F_{\text{CH}_4,\text{Twr}}$ ($\text{mgCH}_4 \text{ m}^{-2} \text{ d}^{-1}$)	F_{CO_2} ($\text{gCO}_2 \text{ m}^{-2} \text{ d}^{-1}$)	$F_{\text{CO}_2,\text{Twr}}$ ($\text{gCO}_2 \text{ m}^{-2} \text{ d}^{-1}$)
07/09	0.22±0.08	0.22	9.31 12.07±49.56 47.44	15.84±49.83	7.53 5.23±9.05 9.33	-1.37
08/09	0.37±0.10	0.27	34.27 31.08±76.29 69.59	13.95±6.52	-8.39 -13.11±17.02 31.45	-3.73
09/09	0.21±0.06	0.18	16.33 19.16±30.91 31.74	-1.36±7.98	-16.89 -16.58±10.58 12.05	-6.92
15/09	0.23±0.14	0.38	69.79 63.88±85.07 80.67	10.86±9.29	-2.45 -5.29±10.86 13.36	-3.80

4 Conclusions

415 In this study, we presented a state-of-the-art UAV platform instrumented with in situ CH_4 and CO_2 gas analyzers and an ultrasonic anemometer capable of measuring 2D wind speed, air temperature, humidity, and pressure. The observational material presented demonstrated how such UAV platforms can be used to collect both qualitative and quantitative information to interpret GHG exchange processes over complex natural terrain.

Two different flight strategies were tested in this study sampling the lowest part of the boundary layer over areas that are otherwise challenging to characterize with stationary devices. Grid survey flights were used to qualitatively represent spatial variability in GHG signals as well as to identify hotspots of the emission sources over a selected study area. Vertical profiles, in turn, were found to be particularly useful for specifying the characteristics within the lower atmospheric boundary layer, filling an important data gap that exists over the Arctic (and other remote areas) primarily due to logistical challenges. Additionally, we have shown that profile flights can be used to quantify the GHG fluxes directly by using the profile method, albeit the data analysed in the scope of this study showed that this approach is subject to large uncertainties and needs further research aimed at their reduction, potentially by employing different flight strategies. As a future profiling strategy, UAV ascending speed will be reduced and the measurements above 25 m AGL will be omitted to avoid the footprint contamination. In addition,



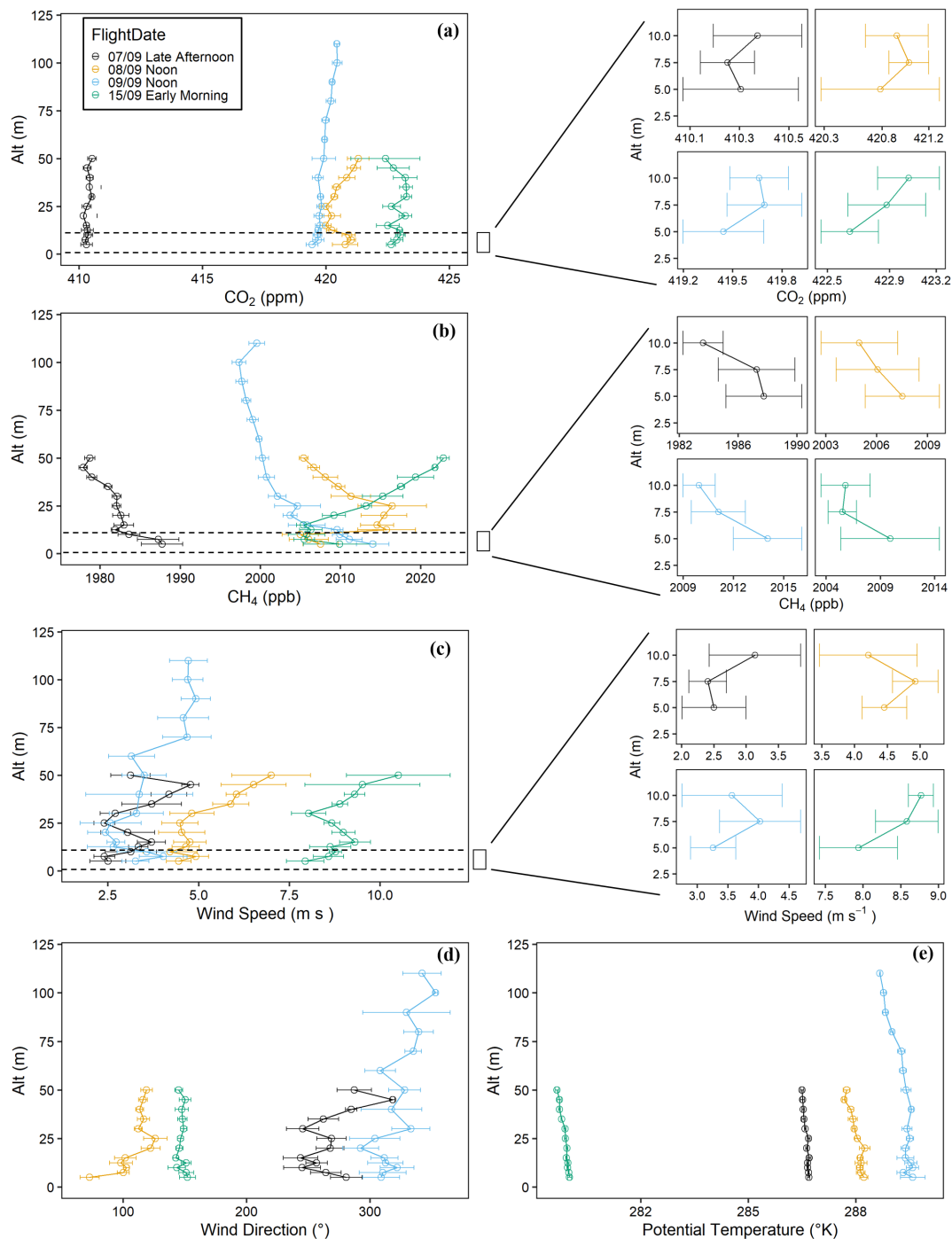


Figure 9. Vertical profiles of (a) CO₂, (b) CH₄, (c) Wind speed, (d) Wind direction, and (e) Potential temperatures. Here each symbol represents the average of each 10-s block, and horizontal lines represent the standard deviations. Profiles of Wind speed, CH₄, and CO₂ close to the surface ($z \leq 10$ m) were provided as a close look-up next to the corresponding figures.

the start altitude of the profile flight should be closer to the ground, ideally around 2 – 3 m AGL. This will allow us to have multiple profiles within one flight set, and help to reduce the uncertainties.

- 430 For future studies with the presented UAV platform, combining the grid survey flights with measured wind characteristics via explicit footprint analysis may help to improve the attribution of emission sources. Better localization of the emission hotspots on the surface will allow for improved upscaling of CH₄ and CO₂, especially if supplemented by stationary EC tower and chamber measurements. In the future the method can also be applied over larger areas, allowing further closure of the scaling gaps e.g. between local observations and satellite remote sensing at regional scales.
- 435 In summary, our study shows that UAV platforms are capable of providing valuable information on spatially variable greenhouse gas patterns within the atmospheric boundary layer, which can improve our understanding of greenhouse gas processes within complex landscapes. We have demonstrated the applicability of different flight strategies that can be used to support measurements from an existing carbon flux monitoring network, e.g. to assess signal representativeness for upscaling. However, more flight strategies and quantification methods need to be tested to fully exploit the potential of UAV-based GHG
- 440 observations for ecological research. This might also be accomplished by conducting synthetic UAV flights within a numerical model.

Appendix A

- The time series of two gas analyzers sampling a calibration mixture are shown in Fig. A1. Here, the linear drift of the Li-850 can be seen, which within 21-mins of flight time the drift is expected to be no more than 0.18 ppm. The Aeris Strato, on the other hand, shows non-linear drifts with a magnitude of no more than 4 ppb over the same period. Apart from the non-linear
- 445 fluctuations, the drift is usually much less than 4 ppb. These drifts can most likely be attributed to a compromise in temperature stabilization, where the cell enclosure was stripped-down in this instrument model to arrive at a sensor weight compatible with UAV application.

Appendix B

- 450 A box plot with CO₂ concentration differences between measurement heights at 2.5 and 10 m a.g.l. from Lindenberg tower is shown in Fig. B1. The Lindenberg Tower is part of the Integrated Carbon Observation System (ICOS) network that provides accurate atmospheric measurements across Europe (ICOS RI et al., 2023). The gradient of the hourly CO₂ concentrations between 2.5 and 10 m above the ground level was found to fluctuate between -1.19 and 1.73 ppm at this site (see Fig. B1). Here, only summertime measurements (June to August) during the late morning hours (10-12 AM) within the period 2016 to
- 455 2022 were considered.

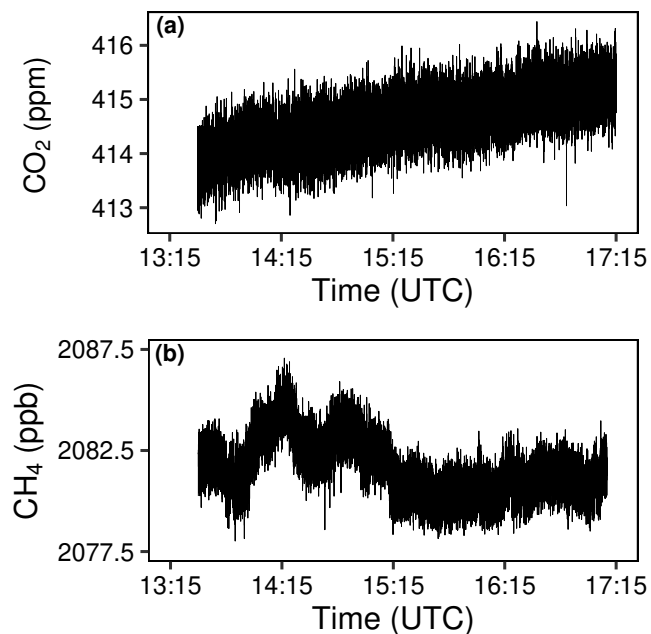


Figure A1. Sampling gas analyzers using calibration gas tanks with ambient air mole fractions (a) Licor Li-850, (b) Aeris Strato.

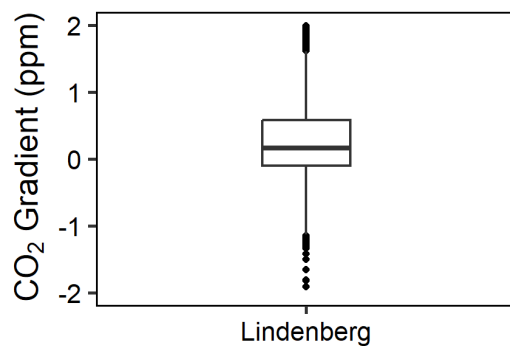


Figure B1. Gradient of CO₂ calculated from Lindenberg Tower. Two measurement heights of 2.5 and 10 m were used in here.

Appendix C

Wind characteristics over the Stordalen Mire (ICOS Station ID:SE-Sto) were illustrated using 30-min averaged data between 2021-12-31 and 2023-08-31 (see Fig. C1). This 3-year record shows a clear domination of wind sectors in the WNW and ESE directions, respectively.

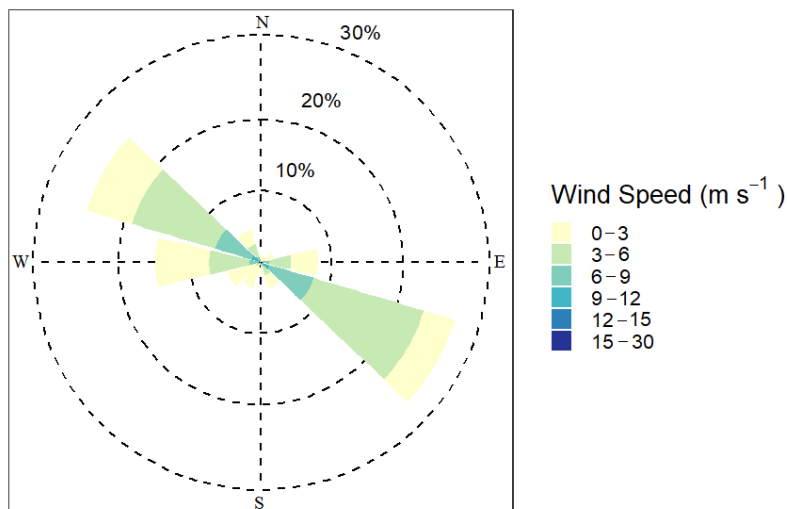


Figure C1. The wind rose as measured by the ICOS station located in Stordalen Mire, reflecting mean wind conditions between 2021-12-31 and 2023-08-31.

460 *Code and data availability.* UAV-based data are available upon request from Mathias Göckede. The data from the Stordalen Mire that was used to create the wind rose can be obtained at ICOS Carbon Portal (<https://meta.icos-cp.eu/objects/JFtuqWbso4iTRa0UFYalE-4X>, Lundin et al., 2023), together with the Lindenberg tower data for 10 and 2.5 m height levels (https://meta.icos-cp.eu/objects/xif7TvIQNclDN2_eK27_sB12, https://meta.icos-cp.eu/objects/-5PWpiCSVt4r_49dOTDTdysF, respectively; ICOS RI et al., 2023). UAV-based land cover map data is available at (<https://isogenie-db.asc.ohio-state.edu/datasources>, Varner et al. (2022)). EC tower data from ICOS Stordalen (SE-Sto) can be found at ICOS Carbon Portal (https://meta.icos-cp.eu/objects/g3HK1QwpR6mug_U-uDedLsTV, Lundin et al., 2024), and CH₄ data might be available upon request from ICOS Sweden and the Abisko Scientific Research Station.

Author contributions. **Writing/Editing:** Abdullah Bolek, Martin Heimann, Mathias Göckede **Data Collection, Processing, and Analysis:** Abdullah Bolek **Supervision:** Mathias Göckede, Martin Heimann

Competing interests. The authors declare that they have no competing interests.

470 *Acknowledgements.* The presented research was supported by the European Research Council (ERC) under the European Union's Horizon 2020 research and innovation programme (grant agreement No 951288, Q-Arctic). Authors thank the coordinators of Jena-Experiment site for allowing us to conduct the flights, and also ANS researchers for all their support for Stordalen Mire flights. We acknowledge ICOS Sweden and the Abisko Scientific Research Station for providing the eddy-covariance data. ICOS Sweden is funded by the Swedish Research Council

as a national research infrastructure. Authors also thank Michał Gałkowski at MPI-BGC/BSI for his valuable comments and suggestions
475 which helped us to improve this manuscript.

References

- Allan, D. W.: Should the Classical Variance Be Used As a Basic Measure in Standards Metrology?, *IEEE TRANSACTIONS ON INSTRUMENTATION AND MEASUREMENT*, 36, 1987.
- Allen, G., Hollingsworth, P., Kabbabe, K., Pitt, J. R., Mead, M. I., Illingworth, S., Roberts, G., Bourn, M., Shallcross, D. E., and Percival, C. J.: The development and trial of an unmanned aerial system for the measurement of methane flux from landfill and greenhouse gas emission hotspots, *Waste Management*, 87, 883–892, 2019.
- Andersen, T., Scheeren, B., Peters, W., and Chen, H.: A UAV-based active AirCore system for measurements of greenhouse gases, *Atmospheric Measurement Techniques*, 11, 2683–2699, <https://doi.org/10.5194/amt-11-2683-2018>, 2018.
- Andersen, T., Zhao, Z., de Vries, M., Necki, J., Swolkien, J., Menoud, M., Röckmann, T., Roiger, A., Fix, A., Peters, W., et al.: Local-to-regional methane emissions from the Upper Silesian Coal Basin (USCB) quantified using UAV-based atmospheric measurements, *Atmospheric Chemistry and Physics*, 23, 5191–5216, 2023.
- Aubinet, M., Grelle, A., Ibrom, A., Rannik, Ü., Moncrieff, J., Foken, T., Kowalski, A. S., Martin, P. H., Berbigier, P., Bernhofer, C., et al.: Estimates of the annual net carbon and water exchange of forests: the EUROFLUX methodology, in: *Advances in ecological research*, vol. 30, pp. 113–175, Elsevier, 1999.
- Bäckstrand, K., Crill, P., Jackowicz-Korczynski, M., Mastepanov, M., Christensen, T., and Bastviken, D.: Annual carbon gas budget for a subarctic peatland, Northern Sweden, *Biogeosciences*, 7, 95–108, 2010.
- Baldocchi, D., Falge, E., Gu, L., Olson, R., Hollinger, D., Running, S., Anthoni, P., Bernhofer, C., Davis, K., Evans, R., et al.: FLUXNET: A new tool to study the temporal and spatial variability of ecosystem-scale carbon dioxide, water vapor, and energy flux densities, *Bulletin of the American Meteorological Society*, 82, 2415–2434, 2001.
- Baldocchi, D. D.: Assessing the eddy covariance technique for evaluating carbon dioxide exchange rates of ecosystems: past, present and future, *Global change biology*, 9, 479–492, 2003.
- Baldocchi, D. D., Hincks, B. B., and Meyers, T. P.: Measuring biosphere-atmosphere exchanges of biologically related gases with micrometeorological methods, *Ecology*, 69, 1331–1340, 1988.
- Barker, P. A., Allen, G., Pitt, J. R., Bauguitte, S. J.-B., Pasternak, D., Cliff, S., France, J. L., Fisher, R. E., Lee, J. D., Bower, K. N., et al.: Airborne quantification of net methane and carbon dioxide fluxes from European Arctic wetlands in Summer 2019, *Philosophical Transactions of the Royal Society A*, 380, 20210 192, 2022.
- Bastviken, D., Wilk, J., Duc, N. T., Gålfalk, M., Karlson, M., Neset, T.-S., Opach, T., Enrich-Prast, A., and Sundgren, I.: Critical method needs in measuring greenhouse gas fluxes, *Environmental Research Letters*, 17, 104 009, 2022.
- Bolek, A. and Testik, F.: [Atmospheric Boundary Layer Turbulence Measurements Using sUAS with Neural Network Application](#), in: *AIAA AVIATION 2022 Forum*, p. 4112, 2022.
- Chang, R. Y.-W., Miller, C. E., Dinardo, S. J., Karion, A., Sweeney, C., Daube, B. C., Henderson, J. M., Mountain, M. E., Eluszkiewicz, J., Miller, J. B., et al.: Methane emissions from Alaska in 2012 from CARVE airborne observations, *Proceedings of the National Academy of Sciences*, 111, 16 694–16 699, 2014.
- Chu, H., Luo, X., Ouyang, Z., Chan, W. S., Dengel, S., Biraud, S. C., Torn, M. S., Metzger, S., Kumar, J., Arain, M. A., Arkebauer, T. J., Baldocchi, D., Bernacchi, C., Billesbach, D., Black, T. A., Blanken, P. D., Bohrer, G., Bracho, R., Brown, S., Brunsell, N. A., Chen, J., Chen, X., Clark, K., Desai, A. R., Duman, T., Durden, D., Fares, S., Forbrich, I., Gamon, J. A., Gough, C. M., Griffis, T., Helbig, M., Hollinger, D., Humphreys, E., Ikawa, H., Iwata, H., Ju, Y., Knowles, J. F., Knox, S. H., Kobayashi, H., Kolb, T., Law, B.,

- Lee, X., Litvak, M., Liu, H., Munger, J. W., Noormets, A., Novick, K., Oberbauer, S. F., Oechel, W., Oikawa, P., Papuga, S. A., Pendall, E., Prajapati, P., Prueger, J., Quinton, W. L., Richardson, A. D., Russell, E. S., Scott, R. L., Starr, G., Staebler, R., Stoy, P. C.,
515 Stuart-Haëntjens, E., Sonnentag, O., Sullivan, R. C., Suyker, A., Ueyama, M., Vargas, R., Wood, J. D., and Zona, D.: Representativeness of Eddy-Covariance flux footprints for areas surrounding AmeriFlux sites, *Agricultural and Forest Meteorology*, 301-302, 108350, <https://doi.org/https://doi.org/10.1016/j.agrformet.2021.108350>, 2021.
- Conen, F. and Smith, K.: A re-examination of closed flux chamber methods for the measurement of trace gas emissions from soils to the atmosphere, *European Journal of Soil Science*, 49, 701–707, 1998.
- 520 Donnell, G. W., Feight, J. A., Lannan, N., and Jacob, J. D.: Wind characterization using sUAS, American Institute of Aeronautics and Astronautics Inc, AIAA, <https://doi.org/10.2514/6.2018-2986>, 2018.
- Foken, T.: *Micrometeorology*, pp. 33–81, Springer Berlin Heidelberg, Berlin, Heidelberg, https://doi.org/10.1007/978-3-642-25440-6_2, 2017.
- Göckede, M., Foken, T., Aubinet, M., Aurela, M., Banza, J., Bernhofer, C., Bonnefond, J.-M., Brunet, Y., Carrara, A., Clement, R., et al.:
525 Quality control of CarboEurope flux data–Part 1: Coupling footprint analyses with flux data quality assessment to evaluate sites in forest ecosystems, *Biogeosciences*, 5, 433–450, 2008.
- Goulden, M. and Crill, P.: Automated measurements of CO₂ exchange at the moss surface of a black spruce forest, *Tree physiology*, 17, 537–542, 1997.
- Gålfalk, M., Nilsson Pålédal, S., and Bastviken, D.: Sensitive Drone Mapping of Methane Emissions without the Need for Supplementary Ground-Based Measurements, *ACS Earth and Space Chemistry*, 5, 2668–2676, <https://doi.org/10.1021/acsearthspacechem.1c00106>,
530 2021.
- [Heimann, M., Jordan, A., Brand, W., Lavric, J., Moossen, H., and Rothe, M.: Atmospheric flask sampling program of MPI-BGC, version 13, January, 2022, https://doi.org/10.17617/3.8r, 2022.](https://doi.org/10.17617/3.8r)
- ICOS RI, Bergamaschi, P., Colomb, A., De Mazière, M., Emmenegger, L., Kubistin, D., Lehner, I., Lehtinen, K., Leuenberger, M.,
535 Lund Myhre, C., Marek, M., Platt, S. M., Plaß-Dülmer, C., Ramonet, M., Schmidt, M., Apadula, F., Arnold, S., Blanc, P.-E., Brunner, D., Chen, H., Chmura, L., Conil, S., Couret, C., Cristofanelli, P., Delmotte, M., Forster, G., Frumau, A., Gerbig, C., Gheusi, F., Hammer, S., Haszpra, L., Hatakka, J., Heliasz, M., Henne, S., Hensen, A., Hoheisel, A., Kneuer, T., Laurila, T., Leskinen, A., Levin, I., Lindauer, M., Lunder, C., Mammarella, I., Manca, G., Manning, A., Martin, D., Meinhardt, F., Mölder, M., Müller-Williams, J., Necki, J., Noe, S. M., O’Doherty, S., Ottosson-Löfvenius, M., Philippon, C., Piacentino, S., Pitt, J., Rivas-Soriano, P., Scheeren, B., Schumacher, M., Sha, M. K., Spain, G., Steinbacher, M., Sørensen, L. L., Vermeulen, A., Vítková, G., Xueref-Remy, I., di Sarra, A., Conen, F., Kazan,
540 V., Roulet, Y.-A., Biermann, T., Heltai, D., Hermansen, O., Komínková, K., Laurent, O., Levula, J., Marklund, P., Morguí, J.-A., Pichon, J.-M., Smith, P., Stanley, K., Trisolino, P., ICOS Carbon Portal, ICOS Atmosphere Thematic Centre, ICOS Flask And Calibration Laboratory, ICOS Flask And Calibration Laboratory, and ICOS Central Radiocarbon Laboratory: European Obspack compilation of atmospheric carbon dioxide data from ICOS and non-ICOS European stations for the period 1972-2023; obspack_co2_466_GVeu_2023-09-13,
545 https://meta.icos-cp.eu/objectsZZwINi4a8_AFssexp603t5t, 2023.
- Karion, A., Sweeney, C., Tans, P., and Newberger, T.: AirCore: An innovative atmospheric sampling system, *Journal of Atmospheric and Oceanic Technology*, 27, 1839–1853, 2010.
- Krishnamurthy, R., Fernando, H., Alappattu, D., Creegan, E., and Wang, Q.: Observations of offshore internal boundary layers, *Journal of Geophysical Research: Atmospheres*, p. e2022JD037425, 2023.

- 550 Kunz, M., Lavric, J., Gerbig, C., Tans, P., Neff, D., Hummelgård, C., Martin, H., Rödjegård, H., Wrenger, B., and Heimann, M.: COCAP: A carbon dioxide analyser for small unmanned aircraft systems, *Atmospheric Measurement Techniques*, 11, 1833–1849, <https://doi.org/10.5194/amt-11-1833-2018>, 2018.
- Kunz, M., Lavric, J. V., Gasche, R., Gerbig, C., Grant, R. H., Koch, F. T., Schumacher, M., Wolf, B., and Zeeman, M.: Surface flux estimates derived from UAS-based mole fraction measurements by means of a nocturnal boundary layer budget approach, *Atmospheric Measurement Techniques*, 13, 1671–1692, <https://doi.org/10.5194/amt-13-1671-2020>, 2020.
- 555 Kwon, M. J., Ballantyne, A., Ciais, P., Qiu, C., Salmon, E., Raoult, N., Guenet, B., Göckede, M., Euskirchen, E. S., Nykänen, H., et al.: Lowering water table reduces carbon sink strength and carbon stocks in northern peatlands, *Global change biology*, 28, 6752–6770, 2022.
- Łakomiec, P., Holst, J., Friborg, T., Crill, P., Rakos, N., Kljun, N., Olsson, P.-O., Eklundh, L., Persson, A., and Rinne, J.: Field-scale CH₄ emission at a subarctic mire with heterogeneous permafrost thaw status, *Biogeosciences*, 18, 5811–5830, 2021.
- 560 Lampert, A., Pätzold, F., Asmussen, M. O., Lobitz, L., Krüger, T., Rausch, T., Sachs, T., Wille, C., Zakharov, D. S., Gaus, D., Bansmer, S., and Damm, E.: Studying boundary layer methane isotopy and vertical mixing processes at a rewetted peatland site using an unmanned aircraft system, *Atmospheric Measurement Techniques*, 13, 1937–1952, <https://doi.org/10.5194/amt-13-1937-2020>, 2020.
- Levy, P. E., Gray, A., Leeson, S., Gaiawyn, J., Kelly, M., Cooper, M., Dinsmore, K., Jones, S., and Sheppard, L.: Quantification of uncertainty in trace gas fluxes measured by the static chamber method, *European Journal of Soil Science*, 62, 811–821, 2011.
- 565 Liu, Y., Paris, J. D., Vrekoussis, M., Antoniou, P., Constantinides, C., Desservettaz, M., Keleshis, C., Laurent, O., Leonidou, A., Philippon, C., Paris, J.-D., Vouterakos, P., Quéhé, P.-Y., Bousquet, P., and Sciare, J.: Improvements of a low-cost CO₂ commercial nondispersive near-infrared (NDIR) sensor for unmanned aerial vehicle (UAV) atmospheric mapping applications Improvements of a low-cost CO₂ commercial nondispersive near-infrared (NDIR) sensor for unmanned aerial vehicle (UAV) atmospheric mapping applications, *Atmospheric Measurement Techniques*, 15, 4431–4442, <https://doi.org/10.5194/amt-15-4431-2022i>, 2022.
- 570 Livingston, G. and Hutchinson, G.: Enclosure-based measurement of trace gas exchange: applications and sources of error, *Biogenic trace gases: measuring emissions from soil and water*, 51, 14–51, 1995.
- Lundin, E., Crill, P., Grudd, H., Holst, J., Kristoffersson, A., Meire, A., Mölder, M., and Rakos, N.: ETC L2 Fluxnet (half-hourly), Abisko-Stordalen Palsa Bog, 2021-12-31–2023-08-31, <https://hdl.handle.net/11676/JFtuqWbso4iTRa0UFYalE-4X>, 2023.
- Lundin, E., Crill, P., Grudd, H., Holst, J., Kristoffersson, A., Meire, A., Mölder, M., and Rakos, N.: ETC L2 Fluxes, Abisko-Stordalen Palsa Bog, 2021-12-31–2023-12-31, https://hdl.handle.net/11676/g3HK1QwpR6mug_U-uDedLsTV, 2024.
- 575 Malmer, N., Johansson, T., Olsrud, M., and Christensen, T. R.: Vegetation, climatic changes and net carbon sequestration in a North-Scandinavian subarctic mire over 30 years, *Global Change Biology*, 11, 1895–1909, 2005.
- Mann, J. and Lenschow, D. H.: Errors in airborne flux measurements, *Journal of Geophysical Research: Atmospheres*, 99, 14 519–14 526, 1994.
- 580 Morales, R., Ravelid, J., Vinkovic, K., Korbeń, P., Tuzson, B., Emmenegger, L., Chen, H., Schmidt, M., Humbel, S., and Brunner, D.: Controlled-release experiment to investigate uncertainties in UAV-based emission quantification for methane point sources, *Atmospheric Measurement Techniques*, 15, 2177–2198, <https://doi.org/10.5194/amt-15-2177-2022>, 2022.
- Neumann, P. P. and Bartholmai, M.: Real-time wind estimation on a micro unmanned aerial vehicle using its inertial measurement unit, *Sensors and Actuators, A: Physical*, 235, 300–310, <https://doi.org/10.1016/j.sna.2015.09.036>, 2015.
- 585 Oberle, F. K., Gibbs, A. E., Richmond, B. M., Erikson, L. H., Waldrop, M. P., and Swarzenski, P. W.: Towards determining spatial methane distribution on Arctic permafrost bluffs with an unmanned aerial system, *SN Applied Sciences*, 1, <https://doi.org/10.1007/s42452-019-0242-9>, 2019.

- O'Shea, S. J., Allen, G., Gallagher, M. W., Bower, K., Illingworth, S., Muller, J., Jones, B. T., Percival, C., Bauguitte, S., Cain, M., et al.: Methane and carbon dioxide fluxes and their regional scalability for the European Arctic wetlands during the MAMM project in summer 2012, *Atmospheric Chemistry and Physics*, 14, 13 159–13 174, 2014.
- 590 Palomaki, R. T., Rose, N. T., van den Bossche, M., Sherman, T. J., and Wekker, S. F. D.: Wind estimation in the lower atmosphere using multirotor aircraft, *Journal of Atmospheric and Oceanic Technology*, 34, 1183–1191, <https://doi.org/10.1175/JTECH-D-16-0177.1>, 2017.
- Parazoo, N. C., Commane, R., Wofsy, S. C., Koven, C. D., Sweeney, C., Lawrence, D. M., Lindaas, J., Chang, R. Y.-W., and Miller, C. E.: Detecting regional patterns of changing CO₂ flux in Alaska, *Proceedings of the National Academy of Sciences*, 113, 7733–7738, 2016.
- 595 Pereira, G. W., Valente, D. S. M., Queiroz, D. M. d., Coelho, A. L. d. F., Costa, M. M., and Grift, T.: Smart-map: An open-source QGIS plugin for digital mapping using machine learning techniques and ordinary kriging, *Agronomy*, 12, 1350, 2022.
- Roscher, C., Schumacher, J., Baade, J., Wilcke, W., Gleixner, G., Weisser, W. W., Schmid, B., and Schulze, E.-D.: The role of biodiversity for element cycling and trophic interactions: an experimental approach in a grassland community, *Basic and Applied Ecology*, 5, 107–121, 2004.
- 600 Scheller, J. H., Mastepanov, M., and Christensen, T. R.: Toward UAV-based methane emission mapping of Arctic terrestrial ecosystems, *Science of the Total Environment*, 819, <https://doi.org/10.1016/j.scitotenv.2022.153161>, 2022.
- Shaw, J. T., Shah, A., Yong, H., and Allen, G.: Methods for quantifying methane emissions using unmanned aerial vehicles: A review, *Philosophical Transactions of the Royal Society A: Mathematical, Physical and Engineering Sciences*, 379, <https://doi.org/10.1098/rsta.2020.0450>, 2021.
- 605 Shimura, T., Inoue, M., Tsujimoto, H., Sasaki, K., and Iguchi, M.: Estimation of wind vector profile using a hexarotor unmanned aerial vehicle and its application to meteorological observation up to 1000 m above surface, *Journal of Atmospheric and Oceanic Technology*, 35, 1621–1631, <https://doi.org/10.1175/JTECH-D-17-0186.1>, 2018.
- Sweeney, C., Karion, A., Wolter, S., Newberger, T., Guenther, D., Higgs, J. A., Andrews, A. E., Lang, P. M., Neff, D., Dlugokencky, E., et al.: Seasonal climatology of CO₂ across North America from aircraft measurements in the NOAA/ESRL Global Greenhouse Gas Reference
- 610 Network, *Journal of Geophysical Research: Atmospheres*, 120, 5155–5190, 2015.
- Tagesson, T.: Turbulent transport in the atmospheric surface layer, Report TR-12-05., Lund University, Department of Physical Geography and Ecosystem Science, 2012.
- Thielicke, W., Hübert, W., Müller, U., Eggert, M., and Wilhelm, P.: Towards accurate and practical drone-based wind measurements with an ultrasonic anemometer, *Atmospheric Measurement Techniques*, 14, 1303–1318, <https://doi.org/10.5194/amt-14-1303-2021>, 2021.
- 615 Tuzson, B., Graf, M., Ravelid, J., Scheidegger, P., Kupferschmid, A., Looser, H., Morales, R. P., and Emmenegger, L.: A compact QCL spectrometer for mobile, high-precision methane sensing aboard drones, *Atmospheric Measurement Techniques*, 13, 4715–4726, <https://doi.org/10.5194/amt-13-4715-2020>, 2020.
- Varner, R. K., Crill, P. M., Frohling, S., McCalley, C. K., Burke, S. A., Chanton, J. P., Holmes, M. E., Saleska, S., and Palace, M. W.: Permafrost thaw driven changes in hydrology and vegetation cover increase trace gas emissions and climate forcing in Stordalen
- 620 Mire from 1970 to 2014, *Philosophical Transactions of the Royal Society A: Mathematical, Physical and Engineering Sciences*, 380, <https://doi.org/10.1098/rsta.2021.0022>, 2022.
- Veen, A. M. v. d. and Cox, M. G.: Getting started with uncertainty evaluation using the Monte Carlo method in R, *Accreditation and Quality Assurance*, 26, 129–141, 2021.
- Vitale, D.: A performance evaluation of despiking algorithms for eddy covariance data, *Scientific Reports*, 11, 11 628, 2021.

- 625 Vitale, D., Fratini, G., Bilancia, M., Nicolini, G., Sabbatini, S., and Papale, D.: A robust data cleaning procedure for eddy covariance flux measurements, *Biogeosciences*, 17, 1367–1391, <https://doi.org/10.5194/bg-17-1367-2020>, 2020.
- Weisser, W. W., Roscher, C., Meyer, S. T., Ebeling, A., Luo, G., Allan, E., Beßler, H., Barnard, R. L., Buchmann, N., Buscot, F., et al.: Biodiversity effects on ecosystem functioning in a 15-year grassland experiment: Patterns, mechanisms, and open questions, *Basic and applied ecology*, 23, 1–73, 2017.
- 630 Wetz, T., Wildmann, N., and Beyrich, F.: Distributed wind measurements with multiple quadrotor unmanned aerial vehicles in the atmospheric boundary layer, *Atmospheric Measurement Techniques*, 14, 3795–3814, <https://doi.org/10.5194/amt-14-3795-2021>, 2021.
- Wetz, T., Zink, J., Bange, J., and Wildmann, N.: Analyses of Spatial Correlation and Coherence in ABL Flow with a Fleet of UAS, *Boundary-Layer Meteorology*, 187, 673–701, <https://doi.org/10.1007/s10546-023-00791-4>, 2023.
- Wildmann, N. and Wetz, T.: Towards vertical wind and turbulent flux estimation with multicopter uncrewed aircraft systems, *Atmospheric*
- 635 *Measurement Techniques*, 15, 5465–5477, <https://doi.org/10.5194/amt-15-5465-2022>, 2022.
- Wolfe, G. M., Kawa, S. R., Hanisco, T. F., Hannun, R. A., Newman, P. A., Swanson, A., Bailey, S., Barrick, J., Thornhill, K. L., Diskin, G., et al.: The NASA carbon airborne flux experiment (CARAFE): instrumentation and methodology, *Atmospheric Measurement Techniques*, 11, 1757–1776, 2018.
- Xiao, W., Liu, S., Li, H., Xiao, Q., Wang, W., Hu, Z., Hu, C., Gao, Y., Shen, J., Zhao, X., et al.: A flux-gradient system for simultaneous
- 640 measurement of the CH₄, CO₂, and H₂O fluxes at a lake–air interface, *Environmental science & technology*, 48, 14 490–14 498, 2014.
- [Yong, H., Allen, G., Mcquilkin, J., Ricketts, H., and Shaw, J. T.: Lessons learned from a UAV survey and methane emissions calculation at a UK landfill, *Waste Management*, 180, 47–54, 2024.](#)
- You, Y., Staebler, R. M., Moussa, S. G., Beck, J., and Mittermeier, R. L.: Methane emissions from an oil sands tailings pond: a quantitative comparison of fluxes derived by different methods, *Atmospheric Measurement Techniques*, 14, 1879–1892, 2021.
- 645 Zhao, J., Zhang, M., Xiao, W., Wang, W., Zhang, Z., Yu, Z., Xiao, Q., Cao, Z., Xu, J., Zhang, X., et al.: An evaluation of the flux-gradient and the eddy covariance method to measure CH₄, CO₂, and H₂O fluxes from small ponds, *Agricultural and Forest Meteorology*, 275, 255–264, 2019.